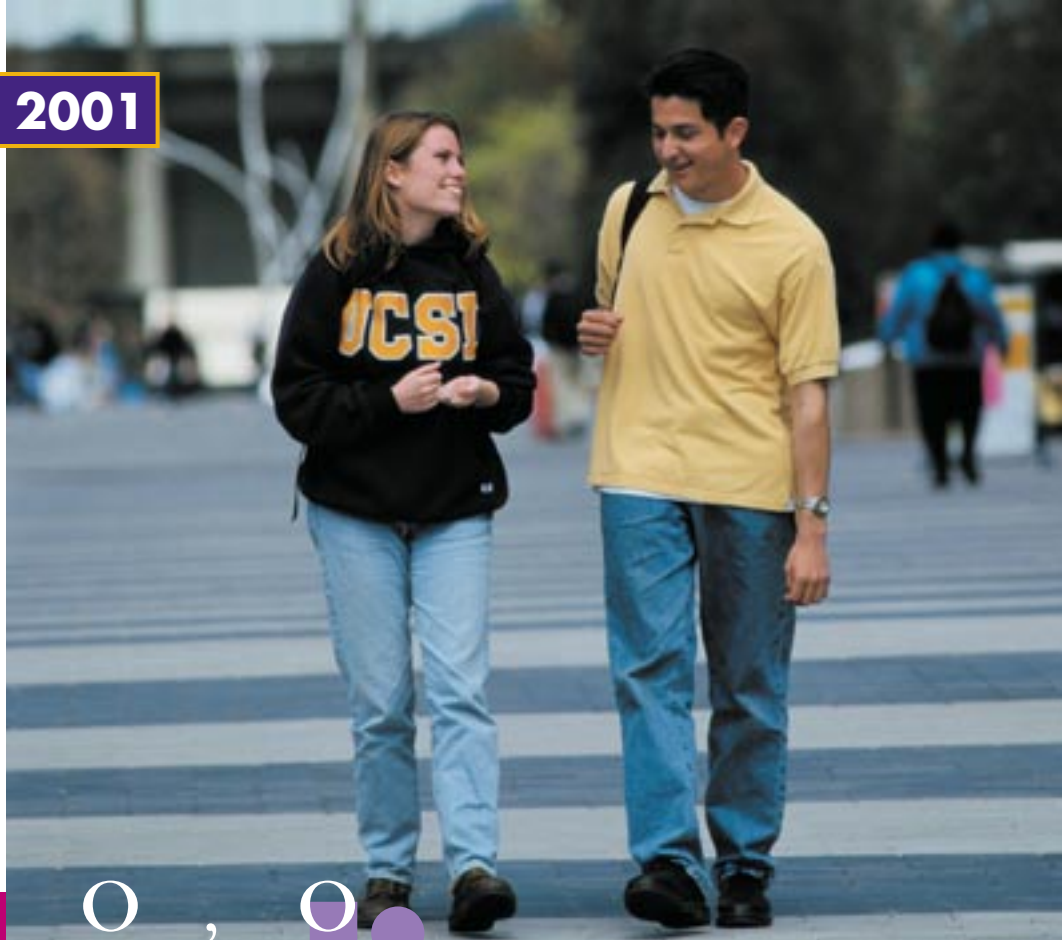




University of California
San Diego

FALL 2001



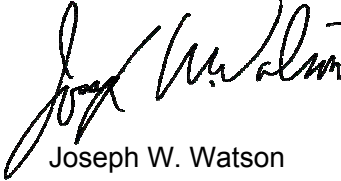
O , O

digest

e t
d A de i
e e
t tisti s

■ INTRODUCTION

The *Student Digest*, published annually by the Office of Student Research and Information, provides the campus community with a broad overview of trends in undergraduate enrollments, academic performance and graduation statistics. If you have questions or comments regarding this publication, please contact the Office of Student Research and Information/Student Affairs at (858) 534-2382. If you wish to view this report and other statistical reports, they can be found on the World Wide Web at <http://ugr8.ucsd.edu>.



Joseph W. Watson
Vice Chancellor

STUDENT DIGEST

Enrollment and Academic Performance Statistics

Fall 2001

University of California, San Diego

William B. Armstrong, Ph.D.
Director

Heidi M. Carty, Ph.D.
Assistant Director

Greg Martin
Programmer Analyst

Jason R. Thornton
Assistant Research Analyst

Student Research & Information
Student Affairs
University of California, San Diego
La Jolla, CA 92093-0088
<http://ugr8.ucsd.edu>

■ Table of Contents

Total Campus Enrollment	4
Total Campus Population Summary	5
Total Undergraduate Enrollment	6
By Class Level	7
By Gender	8
By Ethnicity	9
By Major Field of Study	10
By Major Department	11
By College	12
Academic Profile: Undergraduates	13
Total Undergraduate Population Summary	14
By Class Level	15
By Major Field of Study	16
New Students	17
New Student Enrollments	18
First-Time Freshmen	19
Applicants, Admits & Registered	20
By Gender	21
By Ethnicity	22
By Major Field of Study	23
by Major Department at Time of Admission	24
By College & Home Location	25
By 1st Generation College Status & Income Group	26
Major Feeder High Schools	27
High School Grades and SAT Scores	28
Indicators of Academic Preparation	29
High School GPA by Gender, Ethnicity, Major Field of Study, Home Location, 1st Generation College Status & Income	30
SAT I Scores by Gender, Ethnicity, Major Field of Study, Home Location, 1st Generation College Status & Income	31
SAT II Scores by Gender, Ethnicity, Major Field of Study, Home Location, 1st Generation College Status & Income	32
UCSD/UC Systemwide Comparison	33
New Transfer Students	34
Applicants, Admits & Registered	35
By Gender	36
By Ethnicity	37
By Major Field of Study	38
By Transfer Institution & Home Location	39
By Undergraduate College	40
By 1st Generation College Status & Income Group	41
Major Feeder Transfer Institutions	42
New Transfer Student Academic Preparation	43
Indicators of Academic Preparation	44
Degrees Conferred	45
All Degree Types	46
Bachelor Degrees by Gender	47
Bachelor Degrees by Ethnicity	48
Bachelor Degrees by Major Field of Study & College	49
Bachelor Degrees by First Generation College Status & Income	50
Time-to-Degree/Academic Performance for Students Who Entered UCSD from High School	51
Time-to-Degree/Academic Performance for Students Who Entered UCSD from a Two-Year Community College	52
Appendix: Undergraduate Major Fields of Study/ Academic Departments	53



**■ Total
Campus
Enrollment**

■ TOTAL CAMPUS ENROLLMENT

More than twenty-one thousand students are enrolled at UCSD - showing an increase of 20% over the past decade. UCSD also enrolled a record number of 17,505 undergraduate students, and 4,054 graduate and medical students.

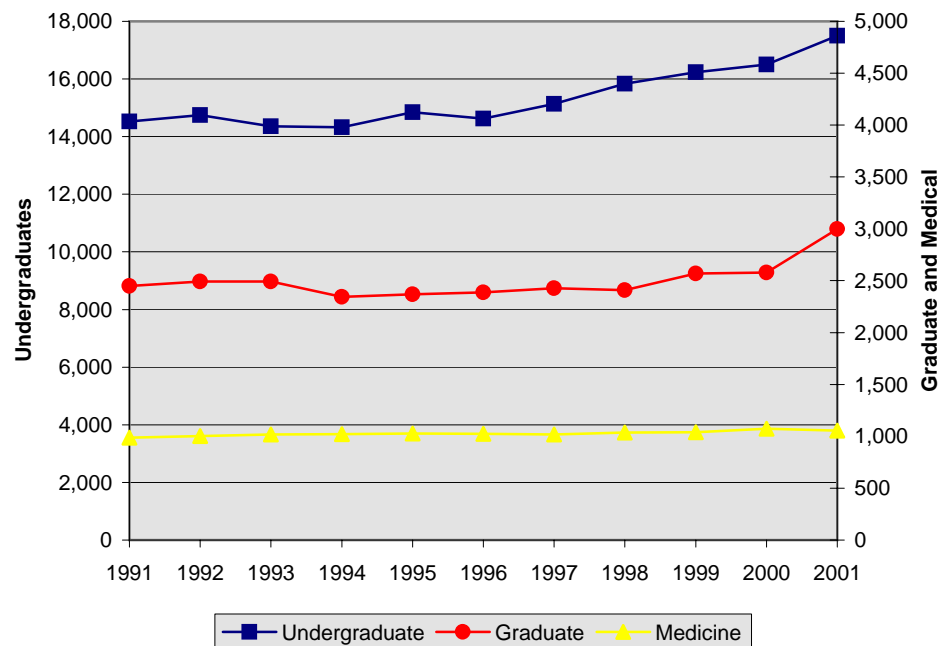
Table 1.

Total Campus Enrollment: The Past Decade Fall Quarter

UCSD Enrollment	1991	1996	1997	1998	1999	2000	2001	10 Year Δ
• Undergraduate	14,529	14,623	15,140	15,837	16,230	16,496	17,505	+20%
• Graduate	2,324	2,386	2,427	2,408	2,570	2,579	2,999	+29%
• Teacher Education Program (TEP)*	125	87	81	88	78	64	9	-93%
• Medicine	988	1,023	1,019	1,037	1,040	1,073	1,055	+7%
Total Campus Enrollment	17,966	18,119	18,667	19,370	19,918	20,212	21,568	+20%

Figure 1.

Total Campus Enrollment: The Past Decade Fall Quarter



* Note: TEP numbers have dropped in 2001 due to a programmatic change with the TEP program. Students in the TEP program are now able to earn a master's degree in education. The newly enrolled TEP students in the M.Ed. program are counted as graduate students.



■ **Total
Undergraduate
Enrollment**

Undergraduate Enrollment

Undergraduate enrollments have increased by 20% over the past ten years. The majority of undergraduate students (59%) at UCSD are upper division students.

Table 2.

Undergraduate Enrollment by Class Level Fall Quarter

The Undergraduates	1991	1996	1997	1998	1999	2000	2001	10 Year Δ
• Lower Division	6,196 (43%)	5,836 (40%)	6,246 (41%)	6,809 (43%)	6,811 (42%)	6,557 (40%)	7,214 (41%)	+16%
Freshman	3,083	3,140	3,620	3,770	3,651	3,366	4,185	+36%
Sophomore	3,113	2,969	2,626	3,039	3,160	3,191	3,029	-3%
• Upper Division	8,330 (57%)	8,514 (58%)	8,894 (59%)	9,028 (57%)	9,419 (58%)	9,939 (60%)	10,291 (59%)	+24%
Junior	3,950	3,773	4,175	3,875	4,319	4,640	4,705	+19%
Senior	4,383	4,741	4,719	5,153	5,100	5,299	5,586	+27%
Total UG Enrollment	14,529	14,623	15,140	15,837	16,230	16,496	17,505	+20%

Figure 2.

Total Undergraduate Enrollment Trends by Class Level Fall Quarter

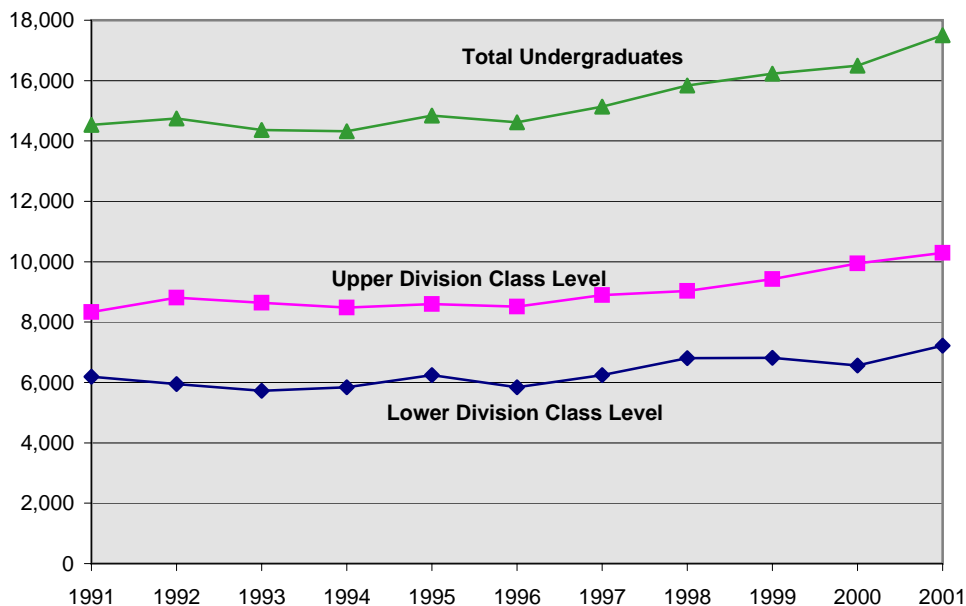


Table 3.

Undergraduates by Gender Fall Quarter

Gender	1991	1996	1997	1998	1999	2000	2001	10 Year Δ
• Male	7,562 (52%)	7,322 (50%)	7,436 (49%)	7,683 (49%)	7,759 (48%)	7,891 (48%)	8,400 (48%)	+11%
• Female	6,967 (48%)	7,301 (50%)	7,704 (51%)	8,154 (51%)	8,471 (52%)	8,605 (52%)	9,105 (52%)	+31%
Total UG Enrollment	14,529	14,623	15,140	15,837	16,230	16,496	17,505	+20%

Women slightly outnumber men at UCSD by approximately four percent.

Figure 3.

Undergraduate Enrollment by Gender Fall Quarter

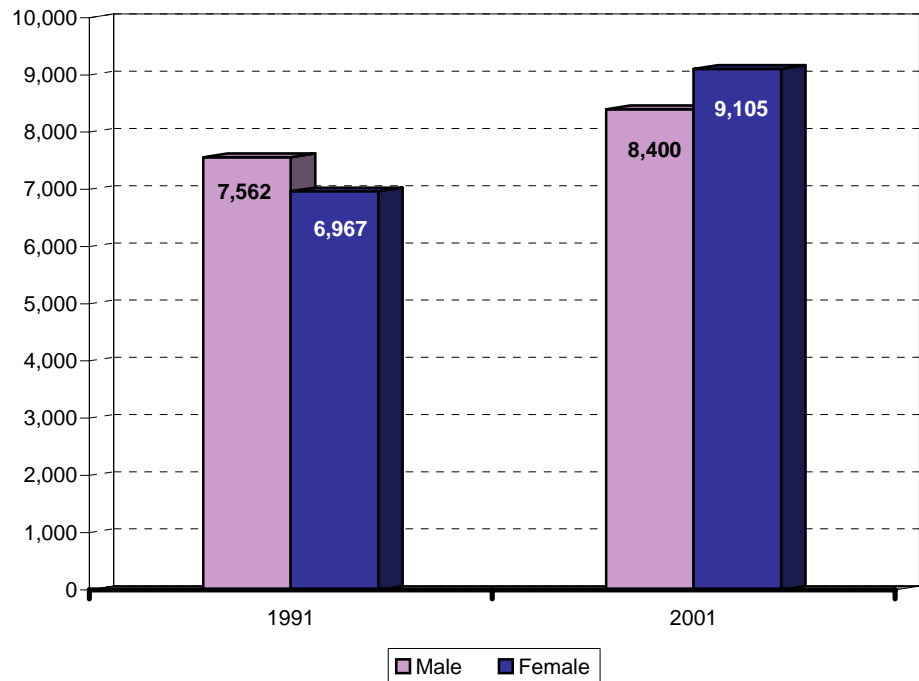


Table 4.

Undergraduates by Ethnicity Fall Quarter

Ethnicity	1991	1996	1997	1998	1999	2000	2001	10 Year Δ
• African-American	401 (3%)	299 (2%)	303 (2%)	277 (2%)	257 (2%)	224 (1%)	211 (1%)	-47%
• Mexican-American	1,086 (7%)	1,300 (9%)	1,303 (9%)	1,216 (8%)	1,226 (8%)	1,282 (8%)	1,322 (8%)	+22%
• Native-American	132 (1%)	122 (1%)	139 (1%)	134 (1%)	119 (1%)	99 (1%)	81 (0%)	-39%
• Asian	2,515 (17%)	4,139 (28%)	4,399 (29%)	4,632 (29%)	4,802 (30%)	4,948 (30%)	5,554 (32%)	+121%
• Caucasian	8,356 (57%)	6,231 (43%)	6,298 (42%)	6,323 (40%)	6,403 (39%)	6,429 (39%)	6,652 (38%)	-20%
• Filipino	555 (4%)	803 (5%)	831 (5%)	874 (6%)	869 (5%)	850 (5%)	896 (5%)	+61%
• Latino	385 (3%)	316 (2%)	321 (2%)	339 (2%)	350 (2%)	374 (2%)	375 (2%)	-3%
• Other/Undeclared	1,099 (8%)	1,413 (10%)	1,546 (10%)	2,042 (13%)	2,204 (13%)	2,290 (14%)	2,414 (14%)	+120%
Total UG Enrollment	14,529	14,623	15,140	15,837	16,230	16,496	17,505	+20%

Compared to 1991, there has been an increase in the proportion of Asian students among the undergraduate population. At the same time, there has been a decrease in the proportion of African American and Caucasian students.

Figure 4.

Undergraduate Enrollment by Ethnicity Fall Quarter

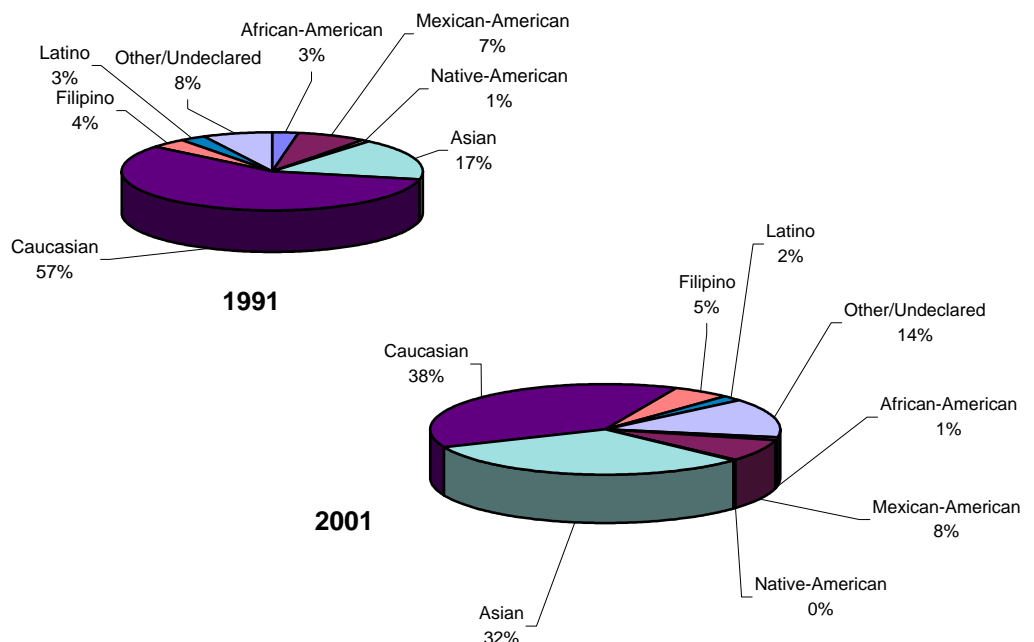


Table 5.

Undergraduates by Major Field of Study Fall Quarter

Major Field of Study	1991	1996	1997	1998	1999	2000	2001	10 Year Δ
• Arts	561 (4%)	423 (3%)	474 (3%)	565 (4%)	695 (4%)	800 (5%)	931 (5%)	+66%
• Engineering	2,656 (18%)	2,651 (18%)	2,869 (19%)	2,981 (19%)	3,136 (19%)	3,320 (20%)	3,855 (22%)	+45%
• Humanities	1,091 (8%)	899 (6%)	885 (6%)	822 (5%)	803 (5%)	748 (5%)	740 (4%)	-32%
• Science/Math	3,730 (26%)	4,900 (34%)	4,771 (32%)	4,863 (31%)	4,769 (30%)	4,444 (27%)	4,254 (24%)	+14%
• Social Science	4,646 (32%)	3,983 (27%)	4,265 (28%)	4,567 (29%)	5,067 (31%)	5,487 (33%)	5,830 (33%)	+25%
• Undec./Special	1,845 (13%)	1,767 (12%)	1,876 (12%)	2,039 (13%)	1,760 (11%)	1,697 (10%)	1,895 (11%)	+3%
Total UG Enrollment	14,529	14,623	15,140	15,837	16,230	16,496	17,505	+20%

The Social Sciences and Science/Math continue to be the most popular undergraduate fields of study at UCSD.

Figure 5.

Undergraduate Enrollment by Major Field of Study Fall Quarter

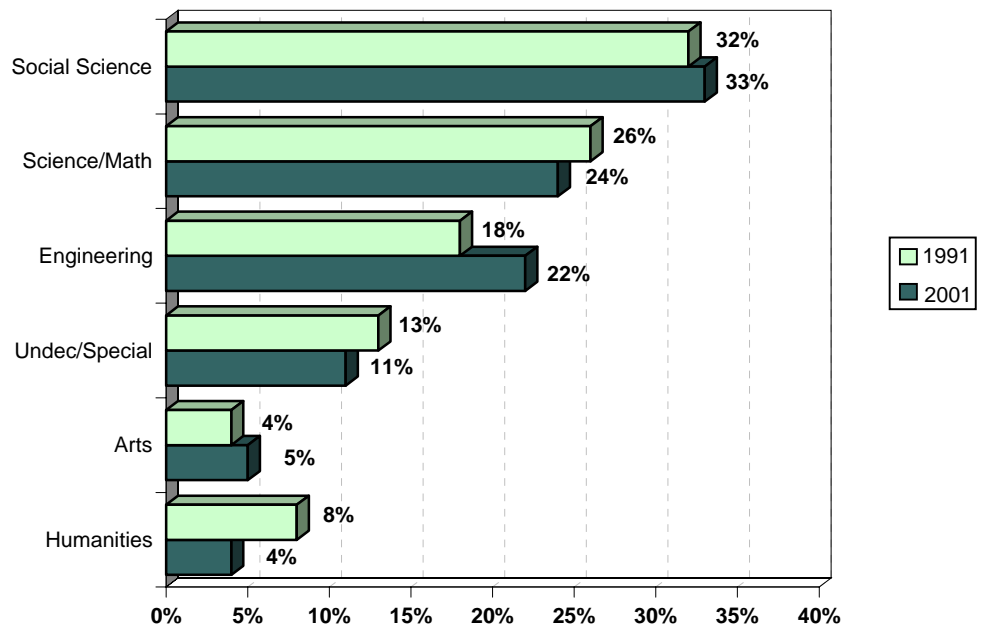


Table 6.

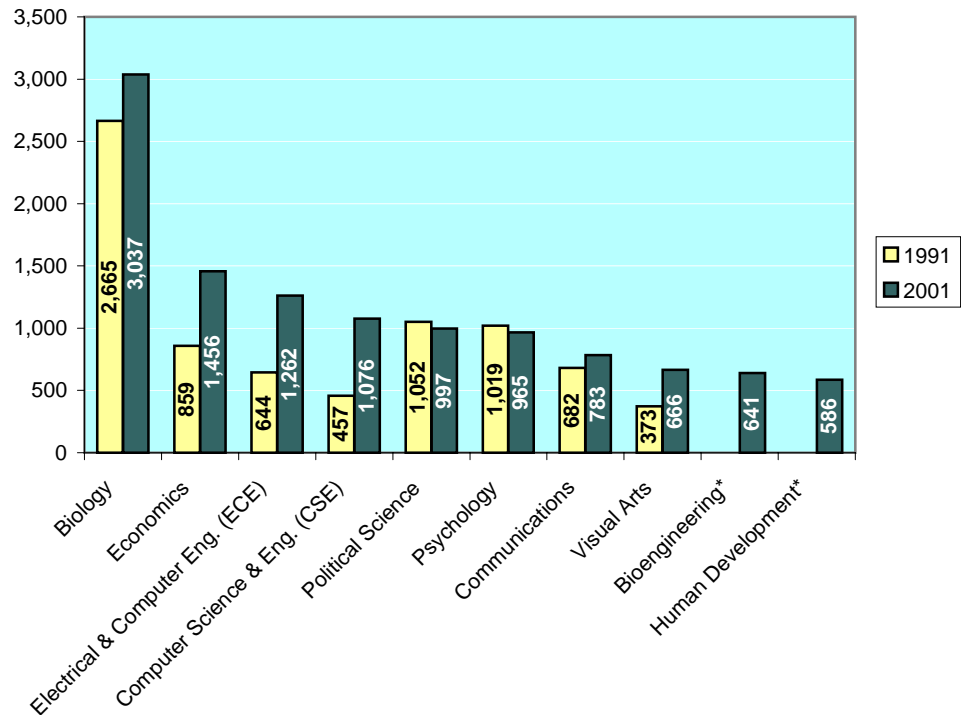
**Undergraduates by Major Department
Ten Most Populous Departments** Fall Quarter

1991			2001		
Major Department	n	%	Major Department	n	%
Biology	2,665	18.3%	Biology	3,037	17.3%
Applied Mechanics & Eng. (AMES)	1,555	10.7%	Economics	1,456	8.3%
Political Science	1,052	7.2%	Electrical & Computer Eng. (ECE)	1,262	7.2%
Psychology	1,019	7.0%	Computer Science & Eng. (CSE)	1,076	6.1%
Economics	859	5.9%	Political Science	997	5.7%
Communications	682	4.7%	Psychology	965	5.5%
Electrical & Computer Eng. (ECE)	644	4.4%	Communications	783	4.5%
Literature	635	4.4%	Visual Arts	666	3.8%
Computer Science & Eng. (CSE)	457	3.1%	Bioengineering*	641	3.7%
Mathematics	377	2.6%	Human Development*	586	3.3%
Other Departments	2,745	18.9%	Other Departments	4,146	23.7%
Undeclared Majors	1,839	12.7%	Undeclared Majors	1,890	10.8%
TOTAL	14,529	100.0%	TOTAL	17,505	100.0%

Similar to 1991, the most popular undergraduate major at UCSD in 2001 is Biology. Economics has moved up three spots and is currently the second most popular major.

Figure 6.

Ten Most Populous Departments Fall Quarter



* No equivalent department in 1991.
Human Development established: Fall 1994
Bioengineering established: Fall 1994

Table 7.

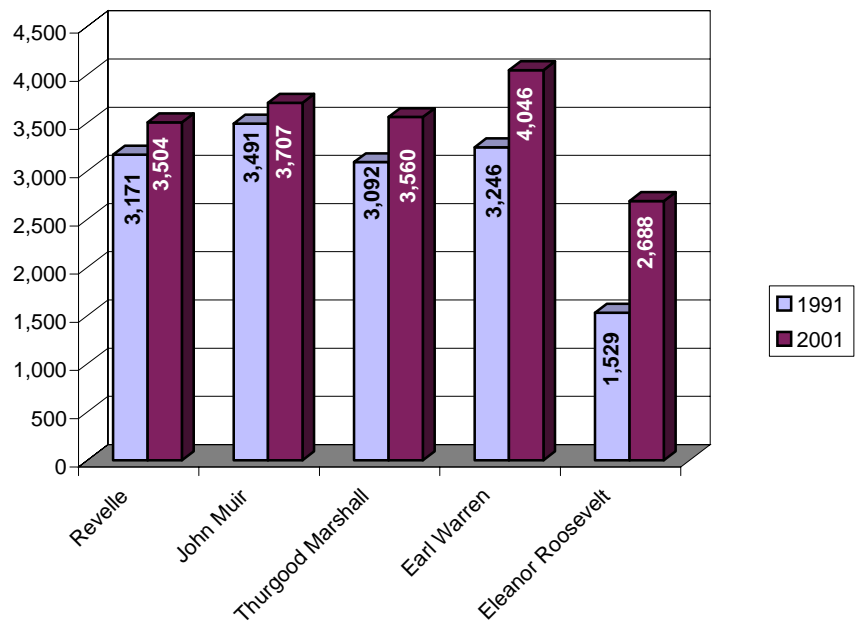
Undergraduates by College Fall Quarter

College	1991	1996	1997	1998	1999	2000	2001	10 Year Δ
• Revelle	3,171 (22%)	3,031 (21%)	3,158 (21%)	3,309 (21%)	3,364 (21%)	3,348 (20%)	3,504 (20%)	+11%
• John Muir	3,491 (24%)	3,308 (23%)	3,339 (22%)	3,415 (22%)	3,440 (21%)	3,503 (21%)	3,707 (21%)	+6%
• Thurgood Marshall	3,092 (21%)	2,910 (20%)	3,113 (21%)	3,203 (20%)	3,326 (20%)	3,342 (20%)	3,560 (20%)	+15%
• Earl Warren	3,246 (22%)	3,536 (24%)	3,566 (24%)	3,768 (24%)	3,816 (24%)	3,856 (23%)	4,046 (23%)	+25%
• Eleanor Roosevelt	1,529 (11%)	1,838 (13%)	1,964 (13%)	2,142 (13%)	2,284 (14%)	2,447 (15%)	2,688 (15%)	+76%
Total UG Enrollment	14,529	14,623	15,140	15,837	16,230	16,496	17,505	

With more than 4,000 students, Earl Warren College is currently the largest of the five undergraduate colleges.

Figure 7.

Undergraduate Enrollments by College Fall Quarter





**Academic
Profile:
Undergraduates**

Academic Profile: Total Undergraduate Population

Table 8.

Academic Profile Summary Fall Quarter

Undergraduates	1991	1996	1997	1998	1999	2000	2001
• UCSD GPA	2.94	2.98	2.98	2.98	2.98	3.00	3.02
GPA \geq 3.5	13.0%	15.9%	16.2%	16.4%	16.7%	17.0%	18.2%
3.0 \leq GPA < 3.5	35.1%	34.0%	34.6%	34.2%	34.0%	35.3%	35.5%
2.5 \leq GPA < 3.0	33.3%	33.0%	32.1%	31.8%	31.4%	31.2%	30.8%
2.0 \leq GPA < 2.5	15.5%	14.2%	14.5%	14.7%	14.9%	13.9%	13.1%
GPA < 2.0	3.1%	2.9%	2.6%	2.9%	3.0%	2.6%	2.4%

Reaching a record high in 2001, the mean grade point average (GPA) for all undergraduates at UCSD is 3.02 (B); 18% have a GPA of 3.50 or higher.

Figure 8.

Proportion of Student Body within GPA Ranges Fall Quarter

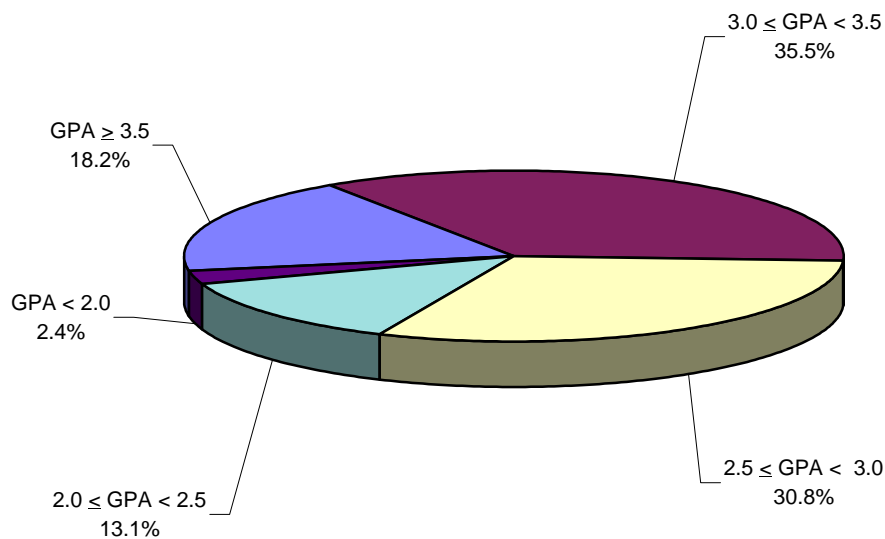


Table 9.

Academic Profile by Class Level **Fall Quarter**

Undergraduates	1991	1996	1997	1998	1999	2000	2001
• Freshman (N = 4,185)							
Freshman GPA	2.72	2.77	2.71	2.66	2.64	2.68	2.74
GPA \geq 3.5	11.5%	15.2%	15.0%	11.1%	8.6%	11.0%	13.3%
3.0 \leq GPA < 3.5	24.3%	23.3%	19.5%	16.7%	18.0%	23.7%	21.1%
2.5 \leq GPA < 3.0	30.9%	28.5%	26.3%	30.7%	32.3%	28.2%	30.7%
2.0 \leq GPA < 2.5	23.9%	21.7%	26.8%	28.9%	28.8%	23.1%	24.3%
GPA < 2.0	9.4%	11.4%	12.4%	12.5%	12.4%	14.0%	10.6%
• Sophomore (N = 3,029)							
Sophomore GPA	2.94	2.94	2.96	2.95	2.98	2.99	3.02
GPA \geq 3.5	13.1%	13.1%	14.6%	14.7%	17.0%	16.7%	18.8%
3.0 \leq GPA < 3.5	34.8%	33.5%	34.1%	33.1%	32.9%	34.6%	35.8%
2.5 \leq GPA < 3.0	32.4%	34.7%	33.5%	33.7%	32.2%	32.3%	29.4%
2.0 \leq GPA < 2.5	16.0%	15.8%	15.4%	15.3%	14.9%	14.2%	13.0%
GPA < 2.0	3.7%	2.8%	2.4%	3.2%	3.1%	2.3%	2.9%
• Junior (N = 4,705)							
Junior GPA	2.94	2.98	2.99	3.01	2.99	3.00	3.03
GPA \geq 3.5	13.2%	15.4%	16.0%	17.2%	16.3%	16.9%	18.4%
3.0 \leq GPA < 3.5	35.0%	35.0%	35.0%	35.7%	35.9%	36.1%	35.9%
2.5 \leq GPA < 3.0	34.2%	33.1%	32.5%	30.9%	31.6%	31.6%	31.2%
2.0 \leq GPA < 2.5	14.7%	13.2%	13.7%	13.5%	13.3%	12.8%	12.5%
GPA < 2.0	3.0%	3.2%	2.7%	2.8%	2.9%	2.7%	2.1%
• Senior (N = 5,586)							
Senior GPA	2.97	3.02	3.02	3.02	3.01	3.03	3.03
GPA \geq 3.5	13.1%	17.8%	17.2%	17.4%	17.8%	17.9%	18.3%
3.0 \leq GPA < 3.5	37.1%	35.0%	36.3%	35.9%	35.2%	36.1%	36.4%
2.5 \leq GPA < 3.0	33.4%	32.4%	31.8%	31.5%	30.7%	30.7%	31.2%
2.0 \leq GPA < 2.5	14.5%	12.9%	13.1%	13.4%	14.4%	13.7%	12.5%
GPA < 2.0	1.9%	1.8%	1.6%	1.8%	1.9%	1.7%	1.6%
Undergraduate GPA	2.94	2.98	2.98	2.98	2.98	3.00	3.02

There is a positive relationship between student level and grade point average; as students advance in standing their grade point average generally increases.

Table 10.

Academic Profile by Major Field of Study **Fall Quarter**

Undergraduates	1991	1996	1997	1998	1999	2000	2001
• Arts (N = 931)							
Arts GPA	3.06	3.11	3.05	3.08	3.06	3.10	3.12
GPA \geq 3.5	16.8%	17.9%	16.4%	18.7%	18.5%	18.7%	20.9%
3.0 \leq GPA < 3.5	42.6%	47.0%	45.1%	43.2%	39.8%	45.3%	44.5%
2.5 \leq GPA < 3.0	27.7%	25.9%	24.9%	26.3%	29.8%	25.8%	24.6%
2.0 \leq GPA < 2.5	10.8%	8.1%	12.0%	10.5%	9.8%	8.7%	9.1%
GPA < 2.0	2.1%	1.2%	1.6%	1.4%	2.1%	1.6%	1.0%
• Engineering (N = 3,855)							
Engineering GPA	2.95	2.97	3.00	2.97	2.97	2.95	2.99
GPA \geq 3.5	13.9%	16.9%	17.7%	15.7%	16.1%	15.6%	16.9%
3.0 \leq GPA < 3.5	32.8%	30.5%	33.2%	32.5%	31.8%	31.4%	32.1%
2.5 \leq GPA < 3.0	35.9%	34.1%	33.0%	34.3%	34.4%	34.6%	34.5%
2.0 \leq GPA < 2.5	14.2%	15.6%	13.7%	14.8%	15.1%	15.7%	14.5%
GPA < 2.0	3.2%	2.8%	2.4%	2.7%	2.5%	2.8%	2.0%
• Humanities (N = 740)							
Humanities GPA	3.05	3.10	3.10	3.14	3.10	3.09	3.14
GPA \geq 3.5	18.3%	22.2%	20.9%	25.0%	23.7%	22.1%	34.9%
3.0 \leq GPA < 3.5	40.4%	40.9%	42.0%	40.3%	37.8%	38.0%	39.9%
2.5 \leq GPA < 3.0	27.9%	25.9%	24.6%	22.7%	25.1%	28.7%	27.0%
2.0 \leq GPA < 2.5	11.8%	9.7%	11.1%	10.2%	10.8%	8.8%	6.6%
GPA < 2.0	1.6%	1.3%	1.4%	1.8%	2.6%	2.5%	1.6%
• Science/Math (N = 4,254)							
Science/Math GPA	2.91	2.97	2.99	2.98	2.98	2.99	3.02
GPA \geq 3.5	13.6%	16.4%	17.1%	18.5%	18.5%	18.8%	20.0%
3.0 \leq GPA < 3.5	31.0%	32.7%	32.5%	31.0%	30.8%	31.6%	32.9%
2.5 \leq GPA < 3.0	33.5%	33.3%	32.9%	32.3%	32.0%	31.6%	30.7%
2.0 \leq GPA < 2.5	18.2%	14.6%	15.0%	15.3%	15.6%	15.2%	13.8%
GPA < 2.0	3.7%	3.1%	2.5%	2.9%	3.1%	2.8%	2.7%
• Social Science (N = 5,830)							
Social Science GPA	2.93	2.97	2.95	2.97	2.97	3.01	3.00
GPA \geq 3.5	10.8%	14.0%	12.8%	13.4%	14.3%	15.5%	16.4%
3.0 \leq GPA < 3.5	37.3%	35.2%	36.4%	36.9%	37.4%	38.5%	37.4%
2.5 \leq GPA < 3.0	33.4%	33.5%	33.1%	31.8%	30.4%	30.6%	30.5%
2.0 \leq GPA < 2.5	15.7%	14.3%	14.8%	14.9%	14.9%	13.2%	13.3%
GPA < 2.0	2.8%	3.0%	2.9%	3.0%	2.9%	2.2%	2.3%
Undergraduate GPA	2.94	2.98	2.98	2.98	2.98	3.00	3.02

Grade point averages vary by major field of study with the highest average GPAs generally associated with Arts and Humanities majors.



**New
Students**

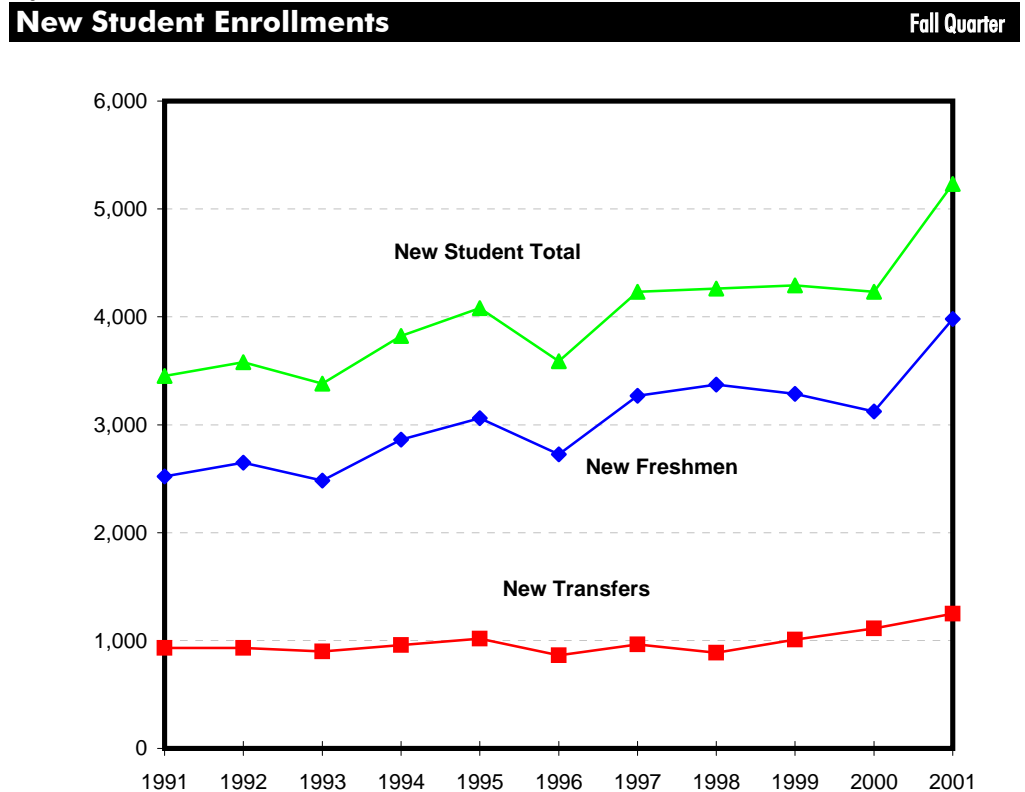
■ New Students: The Past Decade

New student enrollments have increased from 3,452 in 1991 to 5,231 in 2001, representing an overall increase of 52%. Of the new student enrollment, over three-quarters (76%) are first-time freshmen.

Table 11.

New Student Enrollments								Fall Quarter
New Students	1991	1996	1997	1998	1999	2000	2001	10 Year Δ
• First-Time Freshmen	2,521 (73%)	2,725 (76%)	3,268 (77%)	3,373 (79%)	3,286 (77%)	3,122 (74%)	3,981 (76%)	+ 58%
• New Transfers	931 (27%)	863 (24%)	965 (23%)	888 (21%)	1,007 (23%)	1,111 (26%)	1,250 (24%)	+ 34%
New Student Total	3,452	3,588	4,233	4,261	4,293	4,233	5,231	+52%

Figure 9.





**First-Time
Freshmen**

■ First-Time Freshmen

Over thirty-eight thousand high school students applied for admission to UCSD for Fall of 2001. Of these students, 43% were admitted to UCSD. A total of 3,981 (24%) of the admitted students registered for enrollment.

Table 12.

Applicants, Admits & Registered Fall Quarter

First-Time Freshmen	1991	1996	1997	1998	1999	2000	2001	10 Year Δ
• Applicants	19,111	23,685	25,102	28,091	32,547	35,691	38,187	+100%
• Admits	10,696	11,909	13,303	13,586	13,251	13,718	16,493	+54%
Admit/App. Rate	56%	50%	53%	48%	41%	38%	43%	
• Registered	2,521	2,725	3,268	3,373	3,286	3,122	3,981	+58%
Reg./Admit Rate	24%	23%	25%	25%	25%	23%	24%	

Figure 10.

Applicants, Admits & Registered Fall Quarter

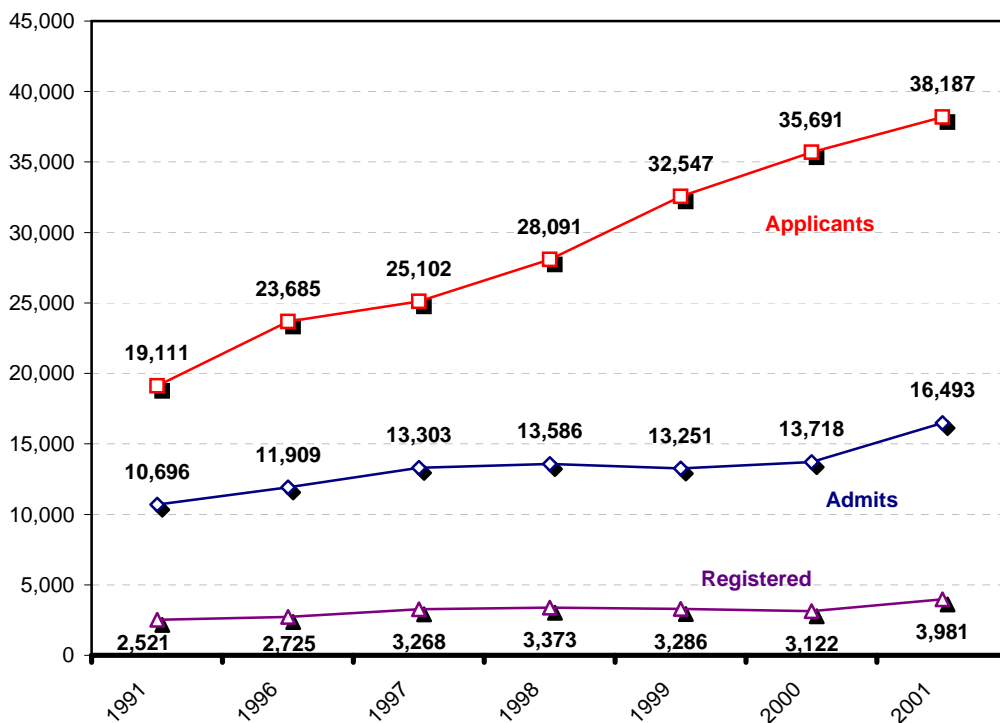


Table 13.

First-Time Freshmen by Gender Fall Quarter

Gender	1991	1996	1997	1998	1999	2000	2001	10 Year Δ
• Male	1,187 (47%)	1,224 (45%)	1,491 (46%)	1,496 (44%)	1,493 (45%)	1,440 (46%)	1,829 (46%)	+54%
• Female	1,334 (53%)	1,501 (55%)	1,777 (54%)	1,877 (56%)	1,793 (55%)	1,682 (54%)	2,152 (54%)	+61%
Total	2,521	2,725	3,268	3,373	3,286	3,122	3,981	+58%

With over 2,100 new female freshmen, women continue to comprise the larger group of first-time freshmen at UCSD.

Figure 11.

First-Time Freshmen by Gender Fall Quarter

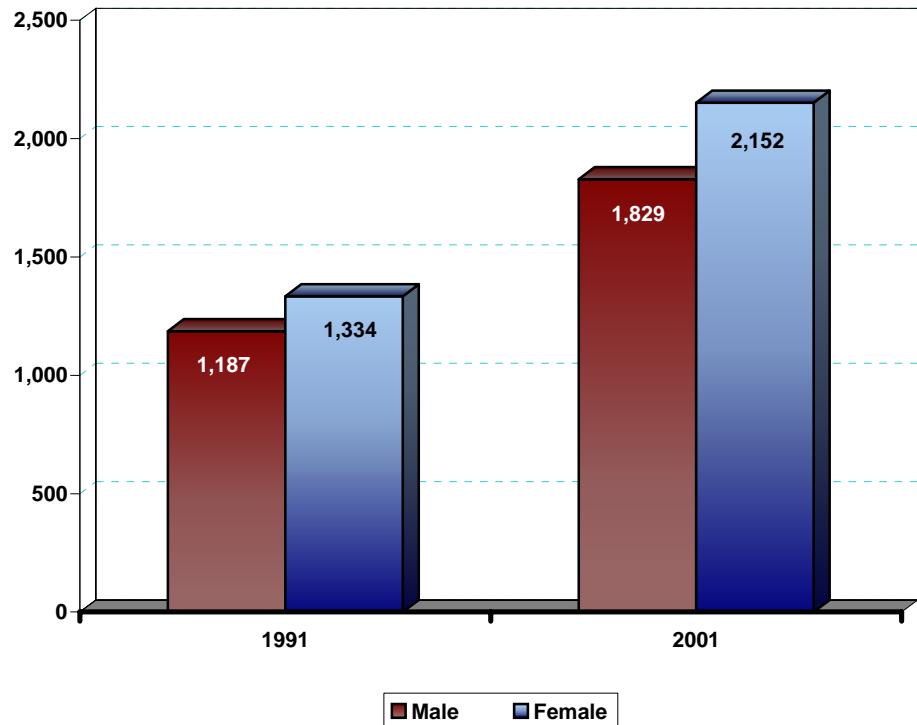


Table 14.

First-Time Freshmen by Ethnicity Fall Quarter

Ethnicity	1991	1996	1997	1998	1999	2000	2001	10 Year Δ
• African-American	61 (2%)	61 (2%)	64 (2%)	52 (2%)	33 (1%)	28 (1%)	33 (1%)	-46%
• Mexican-American	228 (9%)	234 (9%)	272 (8%)	202 (6%)	227 (7%)	243 (8%)	254 (6%)	+11%
• Native-American	33 (1%)	29 (1%)	25 (1%)	19 (1%)	12 (0%)	13 (0%)	9 (0%)	-73%
• Asian	573 (23%)	774 (28%)	959 (29%)	963 (29%)	1,101 (34%)	986 (32%)	1,452 (36%)	+153%
• Caucasian	1,276 (51%)	1,116 (41%)	1,372 (42%)	1,253 (37%)	1,328 (40%)	1,210 (39%)	1,472 (37%)	+15%
• Filipino	82 (3%)	161 (6%)	165 (5%)	181 (5%)	140 (4%)	161 (5%)	202 (5%)	+146%
• Latino	38 (2%)	42 (2%)	60 (2%)	74 (2%)	60 (2%)	67 (2%)	68 (2%)	+79%
• Other/Missing	230 (9%)	308 (11%)	351 (11%)	629 (19%)	385 (12%)	414 (13%)	491 (12%)	+113%
Total	2,521	2,725	3,268	3,373	3,286	3,122	3,981	+58%

Since 1991, the proportion of African-American, Mexican-American, Native American and Caucasian students has decreased. At the same time, the proportion of Asian, Filipino and "Other" students has increased.

Figure 12.

First-Time Freshmen by Ethnicity Fall Quarter

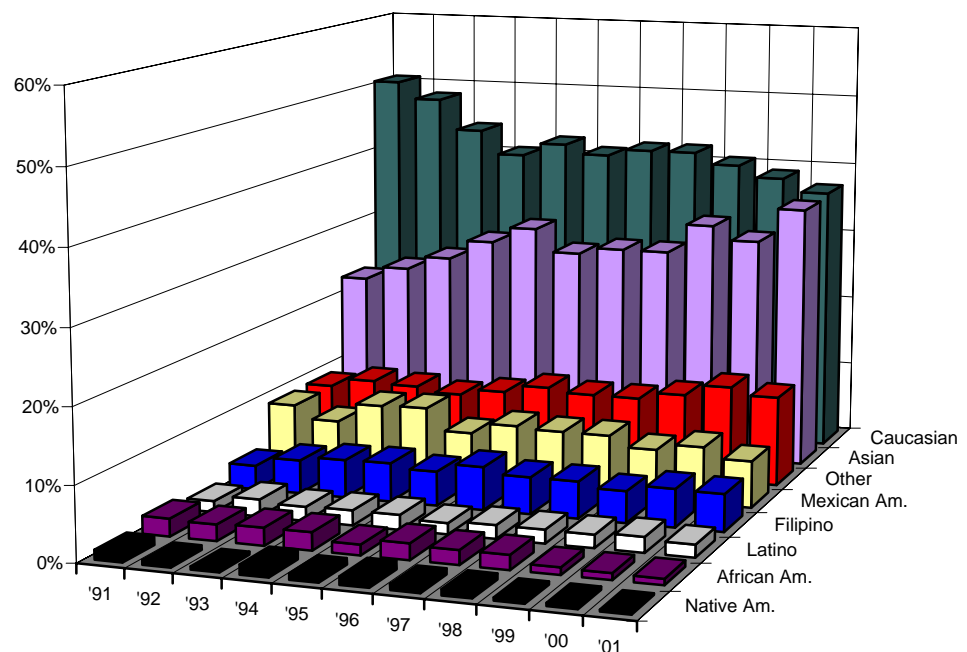


Table 15.

First-Time Freshmen by Major Field of Study Fall Quarter

Major Field of Study	1991	1996	1997	1998	1999	2000	2001	10 Year Δ
• Arts	41 (2%)	44 (2%)	62 (2%)	85 (3%)	65 (2%)	86 (3%)	115 (3%)	+180%
• Engineering	553 (22%)	598 (22%)	636 (19%)	595 (18%)	660 (20%)	713 (23%)	1,035 (26%)	+87%
• Humanities	89 (4%)	84 (3%)	98 (3%)	100 (3%)	90 (3%)	76 (2%)	102 (3%)	+15%
• Science/Math	601 (24%)	733 (27%)	781 (24%)	861 (26%)	840 (26%)	752 (24%)	847 (21%)	+41%
• Social Science	448 (18%)	408 (15%)	506 (15%)	640 (19%)	630 (19%)	564 (18%)	697 (18%)	+56%
• Undeclared/Missing/ Special	789 (31%)	858 (31%)	1,185 (36%)	1,092 (32%)	1,001 (30%)	931 (30%)	1,185 (30%)	+50%
Total	2,521	2,725	3,268	3,373	3,286	3,122	3,981	+58%

The most popular field of study in 2001 was Engineering, followed by Science/Math. Approximately, thirty percent of all new freshmen had not declared a major at the time of admission.

Figure 13.

First-Time Freshmen by Major Field of Study Fall Quarter

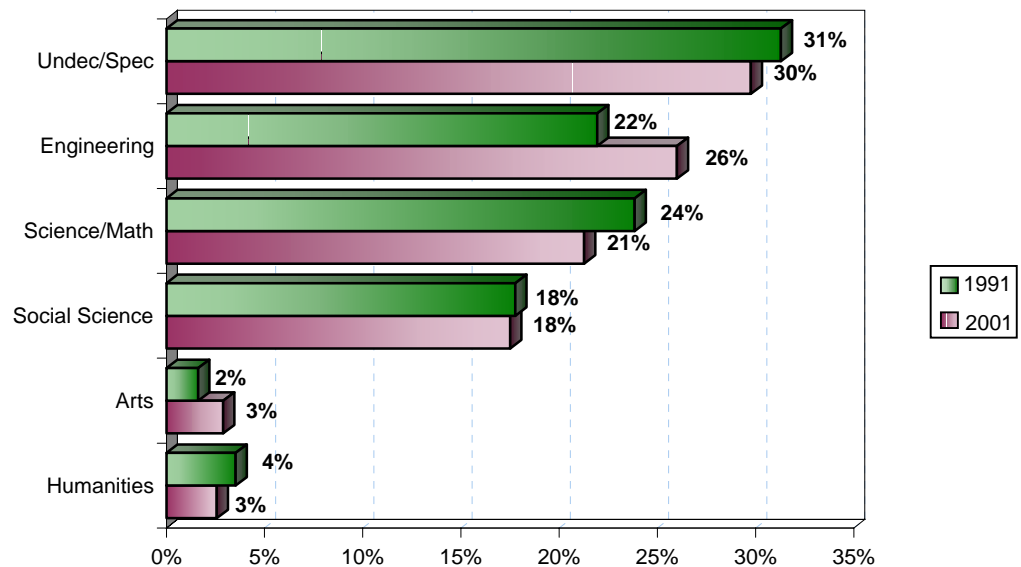


Table 16.

**First-Time Freshmen
by Major Department at Time of Admission** **Fall Quarter**

1991			2001		
Major Department	n	%	Major Department	n	%
Biology	425	16.9%	Biology	587	14.7%
Applied Mechanics & Eng. (AMES)	385	15.3%	Electrical & Computer Eng. (ECE)	351	8.8%
Psychology	121	4.8%	Bioengineering	236	5.9%
Political Science	109	4.3%	Computer Science & Eng. (CSE)	216	5.4%
Electrical & Computer Eng. (ECE)	100	4.0%	Political Science	176	4.4%
Economics	87	3.5%	Economics	154	3.9%
Computer Science & Eng. (CSE)	68	2.7%	Psychology	139	3.5%
Physics	67	2.7%	Mechanical & Aerospace Eng.	136	3.4%
Communications	65	2.6%	Chemistry & Biochemistry	112	2.8%
Literature	61	2.4%	Mathematics	111	2.8%
Mathematics	58	2.3%	Communications	110	2.8%
Chemistry	51	2.0%	Structural Engineering	74	1.9%
Visual Arts	30	1.2%	Visual Arts	70	1.8%
History	24	1.0%	Literature	54	1.4%
Sociology	18	0.7%	History	44	1.1%
Anthropology	10	0.4%	Physics	31	0.8%
Chicano Studies	9	0.4%	Theatre	26	0.7%
Linguistics	8	0.3%	Human Development	23	0.6%
Third World Studies	8	0.3%	Chemical Engineering	22	0.6%
Urban Studies & Planning	7	0.3%	Cognitive Science	22	0.6%
Subtotal	1,711	67.9%	Subtotal	2,694	67.7%
Other Majors	21	0.8%	Other Majors	102	2.6%
Undeclared Majors	789	31.3%	Undeclared Majors	1,185	29.8%
TOTAL	2,521	100.0%	TOTAL	3,981	100.0%

Similar to 1991, Biology was the most popular declared major among new freshmen in 2001; approximately 15% of all new freshmen report majoring in Biology.

Table 17.

First-Time Freshmen by College								Fall Quarter
College	1991	1996	1997	1998	1999	2000	2001	10 Year Δ
• Revelle	547 (22%)	601 (22%)	771 (24%)	703 (21%)	795 (24%)	717 (23%)	848 (21%)	+55%
• John Muir	507 (20%)	570 (21%)	703 (22%)	734 (22%)	657 (20%)	586 (19%)	811 (20%)	+60%
• Thurgood Marshall	530 (21%)	569 (21%)	696 (21%)	627 (19%)	684 (21%)	598 (19%)	803 (20%)	+52%
• Earl Warren	531 (21%)	524 (19%)	560 (17%)	699 (21%)	570 (17%)	652 (21%)	776 (19%)	+46%
• Eleanor Roosevelt	406 (16%)	461 (17%)	538 (16%)	610 (18%)	580 (18%)	569 (18%)	743 (19%)	+83%
Total	2,521	2,725	3,268	3,373	3,286	3,122	3,981	+58%

The largest number of first-time freshmen come to UCSD from the Los Angeles area. The second largest group comes from the San Francisco area.

Table 18.

First-Time Freshmen by Home Location								Fall Quarter
Home Location	1991	1996	1997	1998	1999	2000	2001	10 Year Δ
• San Diego	634 (25%)	697 (26%)	758 (23%)	802 (24%)	594 (18%)	538 (17%)	699 (18%)	+10%
• Los Angeles	939 (37%)	1,136 (42%)	1,295 (40%)	1,315 (39%)	1,398 (42%)	1,416 (45%)	1,641 (41%)	+75%
• San Francisco	481 (19%)	480 (18%)	620 (19%)	625 (19%)	650 (20%)	587 (19%)	879 (22%)	+83%
• Other CA	297 (12%)	328 (12%)	459 (14%)	464 (14%)	492 (15%)	445 (14%)	543 (14%)	+83%
• Out-of-State	151 (6%)	63 (2%)	108 (3%)	148 (4%)	125 (4%)	97 (3%)	131 (3%)	-13%
• Foreign	19 (1%)	21 (1%)	28 (1%)	19 (1%)	27 (1%)	39 (1%)	88 (2%)	+363%
Total	2,521	2,725	3,268	3,373	3,286	3,122	3,981	+58%

Table 19.

First-Time Freshmen by 1st Generation College Status Fall Quarter

College Status	1991	1996	1997	1998	1999	2000	2001	10 Year Δ
• First Generation	392 (16%)	563 (21%)	641 (20%)	623 (18%)	773 (24%)	739 (24%)	858 (22%)	+119%
• Not First Generation	2,129 (84%)	2,162 (79%)	2,627 (80%)	2,750 (82%)	2,513 (76%)	2,383 (76%)	3,123 (78%)	+47%
Total	2,521	2,725	3,268	3,373	3,286	3,122	3,981	+58%

The vast majority of new freshmen have at least one parent who has graduated from a two-year junior college or four-year college/university.

Table 20.

First-Time Freshmen by Income Group Fall Quarter

Income	1991	1996*	1997*	1998*	1999*	2000	2001	10 Year Δ
• High (≥\$98,401)	NA	735 (27%)	1,020 (31%)	962 (29%)	1,007 (31%)	704 (23%)	1,114 (28%)	NA
• Medium High (\$65,601 - \$98,400)	NA	573 (21%)	616 (19%)	583 (17%)	518 (16%)	429 (14%)	584 (15%)	NA
• Medium Low (\$32,801 - \$65,600)	NA	605 (22%)	685 (21%)	610 (18%)	597 (18%)	698 (22%)	842 (21%)	NA
• Low (≤\$32,800)	NA	508 (19%)	585 (18%)	560 (17%)	601 (18%)	629 (20%)	659 (17%)	NA
• Missing	NA	304 (11%)	362 (11%)	658 (20%)	563 (17%)	662 (21%)	782 (20%)	NA
Total	NA	2,725	3,268	3,373	3,286	3,122	3,981	NA

* 1996-1999 Income Categories:
 High = Income ≥ \$87,001
 Medium High = \$58,001-\$87,000
 Medium Low = \$29,001-\$58,000
 Low = Income ≤ \$29,000


Table 21.

Major* Feeder High Schools for First-time Freshmen Fall Quarter

High School	City	Number from H.S. Registered at UCSD in Fall 2001	Percent of UCSD's Total Freshman Enrollment	Average H.S. GPA of Registered Freshmen	Average SAT I of Registered Freshmen	Average SAT II of Registered Freshmen	High School Quintile Rank
Mission San Jose High	Fremont	54	1.4%	3.84	1327	1359	First
Arcadia High School	Arcadia	50	1.3%	3.79	1324	1322	First
Lynbrook High School	San Jose	46	1.2%	3.96	1325	1338	First
Mount Carmel High School	San Diego	40	1.0%	3.98	1250	1277	First
Lowell High School	San Francisco	37	0.9%	3.73	1369	1390	First
University High School	Irvine	35	0.9%	3.72	1359	1397	First
Monta Vista High School	Cupertino	35	0.9%	3.83	1370	1398	First
Walnut High School	Walnut	32	0.8%	4.01	1283	1278	First
Diamond Bar High School	Diamond Bar	31	0.8%	3.97	1312	1289	First
Monte Vista High School	Danville	30	0.8%	3.96	1335	1360	First
Palos Verdes Penn. High School	Rolling Hills	29	0.7%	3.79	1344	1379	First
Bonita Vista High School	Chula Vista	28	0.7%	4.04	1227	1203	Second
Irvine High School	Irvine	28	0.7%	3.95	1298	1303	First
Cerritos High School	Cerritos	27	0.7%	3.87	1268	1298	First
San Marino High School	San Marino	26	0.7%	3.82	1332	1371	First
Long Beach Polytechnic	Long Beach	25	0.6%	4.04	1218	1196	Second
Rancho Bernardo High School	San Diego	24	0.6%	3.90	1308	1299	First
El Camino Real High School	Woodland Hills	24	0.6%	3.86	1324	1305	First
Torrey Pines High School	San Diego	24	0.6%	3.94	1336	1366	First
Junipero Serra High School	San Diego	23	0.6%	4.10	1190	1174	Second
Foothill High School	Pleasanton	23	0.6%	3.89	1336	1375	First
Los Altos High School	Hacienda Heights	23	0.6%	3.90	1235	1219	First
Scripps Ranch High School	San Diego	22	0.6%	4.04	1242	1214	First
Henry M. Gunn Senior High School	Palo Alto	22	0.6%	3.89	1367	1377	First
Independence High School	San Jose	22	0.6%	3.94	1262	1280	Third
Montgomery High School	Santa Rosa	21	0.5%	3.93	1274	1278	Second
South High School	Bakersfield	21	0.5%	4.04	1150	1170	Fifth
Claremont High School	Claremont	21	0.5%	3.96	1272	1256	First
Temple City High School	Temple City	20	0.5%	3.92	1279	1269	Second
Eastlake High School	Chula Vista	20	0.5%	3.98	1177	1140	Second
Mira Mesa High School	San Diego	20	0.5%	4.12	1218	1194	Second
Redwood High School	Larkspur	20	0.5%	3.91	1285	1337	First
Homestead High School	Cupertino	19	0.5%	3.88	1349	1313	First
La Costa Canyon High School	San Diego	19	0.5%	4.00	1264	1305	First
Esperanza High School	Anaheim	19	0.5%	4.11	1288	1299	First
Sunny Hills High School	Fullerton	19	0.5%	3.85	1293	1312	First
Subtotal (Number of High Schools=36)		979	24.6%				
Other High Schools (Number of High Schools=796)		3,002	75.4%				
Total (Number of High Schools=832)		3,981	100.0%	3.95	1264	1262	

* Nineteen or more students

Mission San Jose High School in the San Francisco area and Arcadia High School in the Los Angeles area top the list of major feeder schools for the Fall 2001 freshman cohort.



**High School
Grades and
SAT Scores**

Academic Preparation: A Decade of Change

The 2001 freshman cohort had the highest average SAT and SAT II composite scores in UCSD's recorded history.

Table 22.

Freshman Cohort by HS GPA and SAT Score Averages Fall Quarter

First-Time Freshmen	1991	1996	1997	1998	1999	2000	2001
• HS GPA*	3.91	3.90	3.90	3.89	3.98	3.99	3.95
• SAT I (Verbal & Math)	1150	1225	1233	1241	1256	1259	1264
• SAT II (English & Math)	NA	1185	1198	1198	1241	1255	1262

* GPAs may exceed 4.0 with credit given for honors courses.

Table 23.

Freshman Cohort by Academic Indicator Ranges Fall Quarter

High School GPA Range	Percentage in Range		SAT I Composite Score Range	Percentage in Range	
	1991	2001		1991	2001
• 4.0 - High	45%	48%	• 1500 - 1600	<1	2%
• 3.90 - 3.99	10%	13%	• 1300 - 1499	13%	40%
• 3.60 - 3.89	27%	31%	• 1200 - 1299	23%	31%
• 3.30 - 3.59	12%	7%	• 1000 - 1199	47%	24%
• Low - 3.29	6%	<1%	• Low - 999	18%	3%
Total	100%	100%	Total	100%	100%

Number of Honors Courses: 10th & 11th Grade	Percentage in Range		Number of College Preparatory (A-F) Courses	Percentage in Range	
	1991	2001		1991	2001
• More than 8	NA	7%	• More than 50	8%	14%
• 7 - 8	NA	10%	• 46 - 50	17%	25%
• 5 - 6	NA	18%	• 41 - 45	34%	36%
• 1 - 4	NA	47%	• 36 - 40	35%	23%
• 0	NA	18%	• 30 - 35	6%	2%
Total	100%	100%	Total	100%	100%

Figure 14.

Academic Preparation: 1991-2001 Comparison Fall Quarter

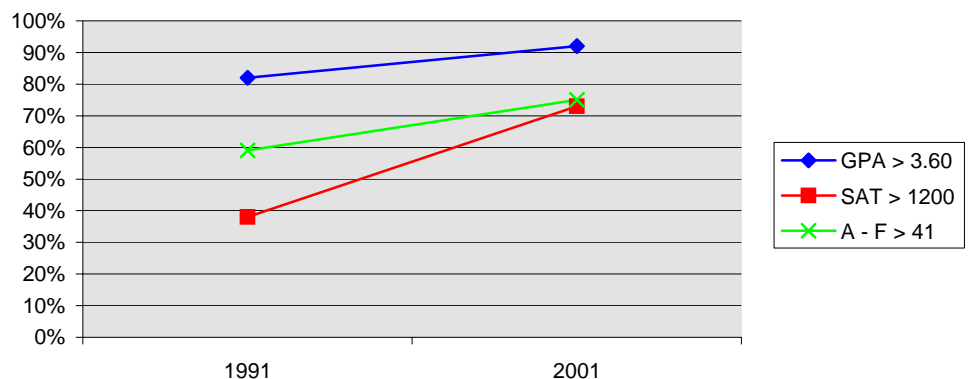


Table 24.

High School GPA¹ by Gender, Ethnicity, Major Field of Study, Home Location, 1st Generation College Status & Income Fall Quarter

First-Time Freshmen	1991	1996 ²	1997 ²	1998 ²	1999 ²	2000	2001
• Gender							
Male	3.90	3.88	3.87	3.86	3.94	3.97	3.93
Female	3.91	3.92	3.92	3.90	4.00	4.00	3.97
• Ethnicity							
African-American	3.43	3.60	3.68	3.81	3.93	4.01	3.94
Mexican-American	3.57	3.72	3.73	3.89	3.96	3.98	3.95
Native-American	3.56	3.80	3.63	3.92	3.95	3.96	3.93
Asian	3.97	3.89	3.88	3.84	3.94	3.92	3.91
Caucasian	3.95	3.94	3.95	3.91	4.01	4.03	4.00
Filipino	4.00	4.00	4.02	3.93	4.07	4.08	3.97
Latino	3.87	4.05	3.90	3.94	3.94	4.04	3.94
• Major Field of Study							
Arts	3.74	3.78	3.78	3.78	3.96	3.94	3.93
Engineering	3.94	3.94	3.89	3.93	4.00	4.03	3.99
Humanities	3.82	3.78	3.84	3.78	3.91	3.96	3.89
Science/Math	3.96	3.95	3.96	3.94	4.03	4.02	3.99
Social Science	3.83	3.80	3.83	3.82	3.92	3.93	3.91
Undec./Special	3.90	3.90	3.90	3.88	3.96	3.97	3.93
• Home Location							
San Diego	3.94	3.96	3.98	3.95	4.05	4.04	3.99
Los Angeles	3.92	3.87	3.86	3.84	3.93	3.95	3.92
San Francisco	3.79	3.85	3.84	3.83	3.94	3.95	3.92
Other CA	3.91	3.95	3.97	3.96	4.01	4.06	4.02
Out of State	4.09	3.96	3.90	3.97	4.11	4.10	4.10
• First Generation College Status							
First Generation	3.86	3.88	3.87	3.87	3.96	3.95	3.93
Not First Generation	3.91	3.91	3.91	3.89	3.98	4.00	3.96
• Income Group							
High (≥\$98,401)	NA	3.90	3.90	3.88	3.98	4.01	3.97
Med. High (\$65,601-\$98,400)	NA	3.92	3.94	3.91	3.98	4.02	4.00
Med. Low (\$32,801-\$65,600)	NA	3.91	3.90	3.89	3.99	3.98	3.92
Low (≤\$32,800)	NA	3.86	3.85	3.85	3.93	3.94	3.90
Missing	NA	3.88	3.89	3.89	3.96	3.99	3.96
Total	3.91	3.90	3.90	3.89	3.98	3.99	3.95

Average high school GPAs vary somewhat by gender, ethnicity, and major field of study. For example, the average GPA of females is typically higher than that of males.

¹ GPAs may exceed 4.0 with credit given for honors courses.

² 1996-1999 Income Categories: High = Income ≥ \$87,001 Medium Low = \$29,001-\$58,000
 Medium High = \$58,001-\$87,000 Low = Income ≤ \$29,000

Table 25.

SAT I Scores by Gender, Ethnicity, Major Field of Study, Home Location, 1st Generation College Status & Income Fall Quarter

First-Time Freshmen SAT I	1991 Average	1996 ^{1,2} Average	1997 ² Average	1998 ² Average	1999 ² Average	2000 Average	2001 Average
• Gender							
Male	1187	1253	1263	1272	1290	1289	1293
Female	1117	1201	1209	1218	1228	1233	1239
• Ethnicity							
African-American	991	1106	1105	1162	1207	1165	1155
Mexican-American	993	1088	1097	1149	1140	1129	1142
Native-American	1074	1176	1141	1277	1260	1240	1273
Asian	1137	1214	1237	1239	1252	1267	1273
Caucasian	1188	1263	1262	1263	1282	1284	1282
Filipino	1089	1178	1188	1178	1193	1192	1209
Latino	1112	1204	1198	1189	1162	1204	1201
• Major Field of Study							
Arts	1119	1201	1223	1232	1273	1245	1246
Engineering	1169	1243	1247	1282	1290	1290	1297
Humanities	1156	1247	1231	1261	1268	1257	1276
Science/Math	1145	1217	1225	1231	1245	1247	1259
Social Science	1113	1199	1209	1217	1231	1235	1240
Undec./Special	1161	1225	1239	1241	1257	1260	1253
• Home Location							
San Diego	1104	1185	1186	1190	1195	1202	1208
Los Angeles	1145	1222	1237	1249	1257	1259	1266
San Francisco	1192	1273	1272	1281	1296	1296	1301
Other CA	1146	1226	1233	1233	1250	1262	1250
Out of State	1233	1300	1288	1297	1330	1318	1337
• First Generation College Status							
First Generation	1059	1096	1148	1174	1169	1174	1184
Not First Generation	1166	1209	1254	1257	1284	1285	1285
• Income Group							
High (≥\$98,401)	NA	1230	1271	1269	1294	1309	1303
Med. High (\$65,601-\$98,400)	NA	1200	1239	1242	1268	1272	1267
Med. Low (\$32,801-\$65,600)	NA	1167	1223	1226	1242	1247	1236
Low (≤\$32,800)	NA	1103	1157	1172	1161	1166	1195
Missing	NA	1180	1230	1277	1297	1298	1291
Total	1150	1225	1233	1241	1256	1259	1264

The average SAT composite score of males is typically higher than that of females. Average SAT scores, in general, were higher in 2001 than in previous years.

¹ SAT scores were "recentered" starting with the 1996 freshman cohort.

² 1996-1999 Income Categories: High = Income ≥ \$87,001 Medium Low = \$29,001-\$58,000
 Medium High = \$58,001-\$87,000 Low = Income ≤ \$29,000

Table 26.

SAT II Scores by Gender, Ethnicity, Major Field of Study, Home Location, 1st Generation College Status & Income Fall Quarter

First-Time Freshmen SAT II	1991 Average	1996 ^{1,2} Average	1997 ² Average	1998 ² Average	1999 ² Average	2000 Average	2001 Average
• Gender							
Male	NA	1204	1220	1218	1263	1280	1285
Female	NA	1170	1179	1182	1222	1234	1242
• Ethnicity							
African-American	NA	1068	1060	1107	1170	1164	1149
Mexican-American	NA	1036	1060	1105	1112	1124	1131
Native-American	NA	1093	1073	1221	1212	1216	1283
Asian	NA	1173	1204	1194	1240	1261	1279
Caucasian	NA	1227	1225	1221	1267	1282	1277
Filipino	NA	1148	1153	1137	1172	1181	1193
Latino	NA	1162	1159	1144	1142	1192	1189
Other	NA	1230	1242	1219	1279	1284	1279
• Major Field of Study							
Arts	NA	1187	1207	1173	1233	1247	1257
Engineering	NA	1201	1215	1237	1274	1288	1299
Humanities	NA	1228	1190	1208	1263	1246	1263
Science/Math	NA	1181	1196	1192	1232	1242	1255
Social Science	NA	1157	1170	1175	1213	1232	1235
Undec./Special	NA	1188	1201	1195	1242	1255	1250
• Home Location							
San Diego	NA	1145	1149	1142	1164	1191	1199
Los Angeles	NA	1188	1200	1203	1245	1252	1263
San Francisco	NA	1228	1242	1242	1288	1300	1316
Other CA	NA	1180	1190	1188	1229	1261	1240
Out of State	NA	1259	1257	1207	1311	1323	1325
• First Generation College Status							
First Generation	NA	1096	1114	1127	1148	1166	1178
Not First Generation	NA	1209	1218	1214	1270	1282	1285
• Income Group							
High (≥\$98,401)	NA	1230	1235	1230	1282	1310	1307
Med. High (\$65,601-\$98,400)	NA	1200	1206	1201	1249	1271	1267
Med. Low (\$32,801-\$65,600)	NA	1167	1186	1176	1224	1238	1226
Low (≤\$32,800)	NA	1103	1125	1127	1142	1161	1193
Missing	NA	1180	1195	1230	1288	1293	1291
Total	NA	1185	1198	1198	1241	1255	1262

Given the high correlation between the SAT and SAT II, average SAT II scores typically show the same pattern of variation by student characteristics as the SAT.

¹ SAT scores were "recentered" starting with the 1996 freshman cohort.

² 1996-1999 Income Categories: High = Income ≥ \$87,001 Medium Low = \$29,001-\$58,000
 Medium High = \$58,001-\$87,000 Low = Income ≤ \$29,000

Table 27.

Intercampus Comparison¹ of Average SAT I Composite Scores Fall Quarter

UC Campus	1991	1992	1993	1994	1995	1996 ²	1997	1998	1999	2000	2001 ³
• Berkeley	1202	1221	1219	1226	1218	1296	1311	1330	1305	1308	1290
• Davis	1060	1079	1070	1060	1070	1162	1162	1149	1165	1170	1170
• Irvine	1030	1016	1028	1011	1015	1121	1117	1126	1155	1171	1169
• Los Angeles	1151	1147	1136	1122	1136	1228	1239	1263	1262	1266	1274
• Riverside	988	984	956	948	975	1046	1062	1061	1057	1056	1065
• San Diego	1141	1140	1130	1104	1136	1221	1233	1240	1250	1259	1264
• Santa Barbara	1061	1044	1005	997	1020	1116	1143	1158	1176	1181	1192
• Santa Cruz	1069	1055	1057	1034	1036	1134	1137	1135	1150	1143	1152
Systemwide	1102	1099	1086	1079	1088	1180	1188	1196	1198	1199	NA

¹ Source: University of California, Frequency Distribution of College Entrance Examination Board (CEEB) Test Scores For Entering Freshmen CSS 050B.

² From 1996, recentered SAT scores are reported.

³ 2001 data based on personal contact with representatives for each UC Campus and are subject to change.

When compared on the basis of average SAT scores, UCSD ranks among the top three in the UC system.

Table 28.

UCSD's Position Relative to Other UC Campuses on SAT I Scores Fall Quarter

Rank	1991	1992	1993	1994	1995	1996	1997	1998	1999	2000	2001
• 1	UCB	UCB	UCB	UCB	UCB	UCB	UCB	UCB	UCB	UCB	UCB
• 2	UCLA	UCLA	UCLA	UCLA	UCSD	UCLA	UCLA	UCLA	UCLA	UCLA	UCLA
• 3	UCSD	UCSD	UCSD	UCSD	UCLA	UCSD	UCSD	UCSD	UCSD	UCSD	UCSD
• 4	UCSC	UCD	UCD	UCD	UCD	UCD	UCD	UCSB	UCSB	UCSB	UCSB
• 5	UCSB	UCSB	UCI	UCSC	UCSC	UCSC	UCSB	UCD	UCD	UCI	UCD
• 6	UCD	UCSC	UCSC	UCI	UCI	UCI	UCSC	UCSC	UCI	UCD	UCI
• 7	UCI	UCI	UCSB	UCSB	UCSB	UCSB	UCI	UCI	UCSC	UCSC	UCSC
• 8	UCR	UCR	UCR	UCR	UCR	UCR	UCR	UCR	UCR	UCR	UCR



**■ New
Transfer
Students**

■ New Transfer Students

A record number of transfer students applied for admission to UCSD in 2001. This year also marks the largest entering cohort with 1,250 newly enrolled transfer students, representing a 34% increase over the past decade.

Table 29.

New Transfers: Applicants, Admits & Registered Fall Quarter

New Transfers	1991	1996	1997	1998	1999	2000	2001	10 Year Δ
• Applicants	3,858	4,351	4,419	4,654	5,351	6,375	7,041	+ 83%
• Admits	2,343	2,407	2,525	2,503	2,845	3,613	4,412	+ 88%
Admit/Applicant Rate	(61%)	(55%)	(57%)	(54%)	(53%)	(57%)	(63%)	
• Registered	931	863	965	888	1,007	1,111	1,250	+ 34%
Registered/Admit Rate	(40%)	(36%)	(38%)	(35%)	(35%)	(31%)	(28%)	

Figure 15.

New Transfers: Applicants, Admits & Registered Fall Quarter

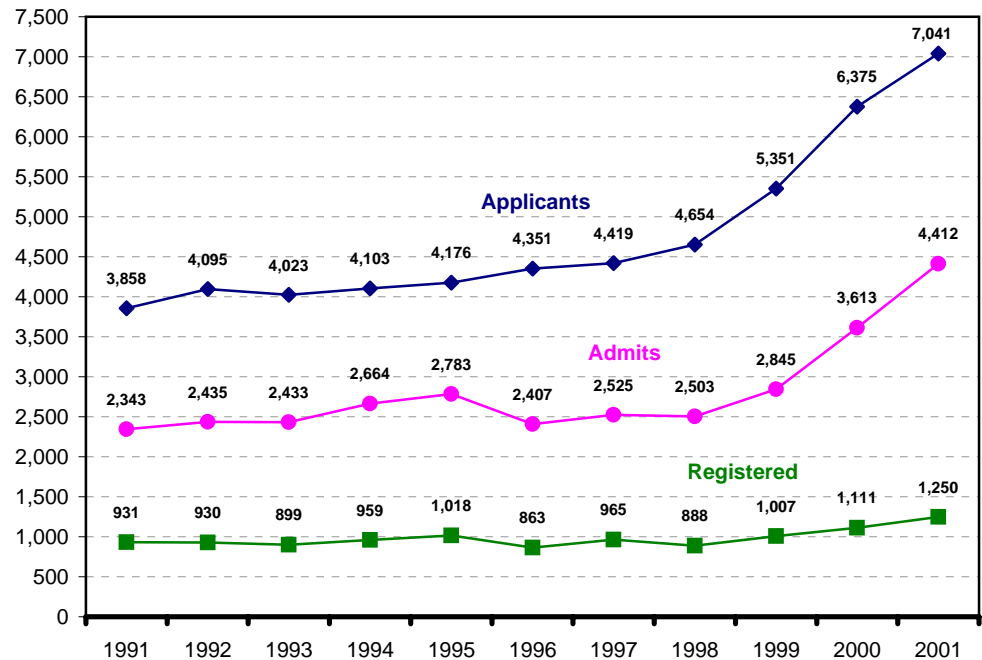


Table 30.

New Transfers by Gender Fall Quarter

Gender	1991	1996	1997	1998	1999	2000	2001	10 Year Δ
• Male	473 (51%)	491 (57%)	489 (51%)	467 (53%)	491 (49%)	556 (50%)	662 (53%)	+40%
• Female	458 (49%)	372 (43%)	476 (49%)	421 (47%)	516 (51%)	555 (50%)	588 (47%)	+28%
Total	931	863	965	888	1,007	1,111	1,250	+34%

At 53%, there are slightly more new male transfer students than female (47%).

Figure 16.

New Transfers by Gender Fall Quarter

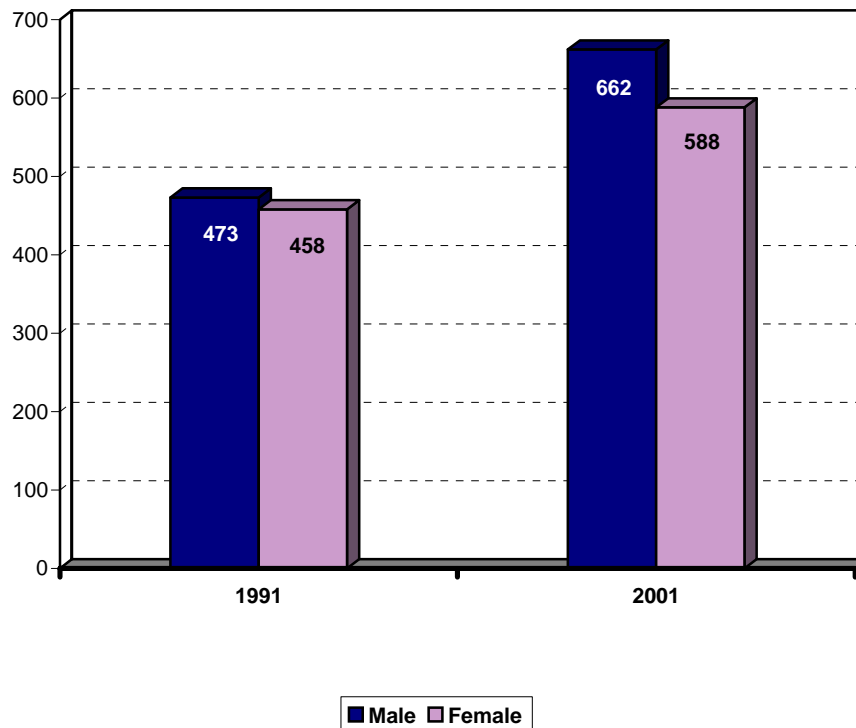


Table 31.

New Transfers by Ethnicity **Fall Quarter**

Ethnicity	1991	1996	1997	1998	1999	2000	2001	10 Year Δ
• African-American	23 (2%)	8 (1%)	21 (2%)	13 (1%)	14 (1%)	18 (2%)	23 (2%)	+0%
• Mexican-American	68 (7%)	77 (9%)	78 (8%)	68 (8%)	86 (9%)	101 (9%)	106 (8%)	+56%
• Native-American	8 (1%)	6 (1%)	13 (1%)	9 (1%)	5 (1%)	4 (0%)	10 (1%)	+25%
• Asian	108 (12%)	218 (25%)	224 (23%)	197 (22%)	222 (22%)	279 (25%)	330 (26%)	+206%
• Caucasian	602 (65%)	410 (48%)	437 (45%)	332 (37%)	454 (45%)	459 (41%)	508 (41%)	-16%
• Filipino	22 (2%)	44 (5%)	49 (5%)	45 (5%)	33 (3%)	49 (4%)	56 (4%)	+155%
• Latino	18 (2%)	24 (3%)	30 (3%)	25 (3%)	30 (3%)	34 (3%)	38 (3%)	+111%
• Other/Undeclared	82 (9%)	76 (9%)	113 (12%)	199 (22%)	163 (16%)	167 (15%)	179 (14%)	+118%
Total	931	863	965	888	1,007	1,111	1,250	+34%

Over the past decade the proportion of African-American, Mexican-American, Native-American and Latino students has remained, relatively, unchanged. At the same time, the proportion of Asian students has more than doubled while the proportion of Caucasian students has declined.

Table 32.

New Transfers by Major Field of Study Fall Quarter

Major Field of Study	1991	1996	1997	1998	1999	2000	2001	10 Year Δ
• Arts	44 (5%)	40 (5%)	47 (5%)	40 (5%)	63 (6%)	73 (7%)	101 (8%)	+130%
• Engineering	149 (16%)	176 (20%)	197 (20%)	207 (23%)	203 (20%)	278 (25%)	273 (22%)	+83%
• Humanities	102 (11%)	82 (10%)	64 (7%)	67 (8%)	66 (7%)	80 (7%)	73 (6%)	-28%
• Science/Math	261 (28%)	277 (32%)	326 (34%)	263 (30%)	264 (26%)	225 (20%)	279 (22%)	+7%
• Social Science	359 (39%)	266 (31%)	301 (31%)	288 (32%)	394 (39%)	438 (39%)	503 (40%)	+40%
• Undeclared/ Special	16 (2%)	22 (3%)	30 (3%)	23 (3%)	17 (2%)	17 (2%)	21 (2%)	+31%
Total	931	863	965	888	1,007	1,111	1,250	+34%

Social Science was by far the most popular field of study among new transfer students in 2001.

Figure 17.

New Transfers by Major Field of Study Fall Quarter

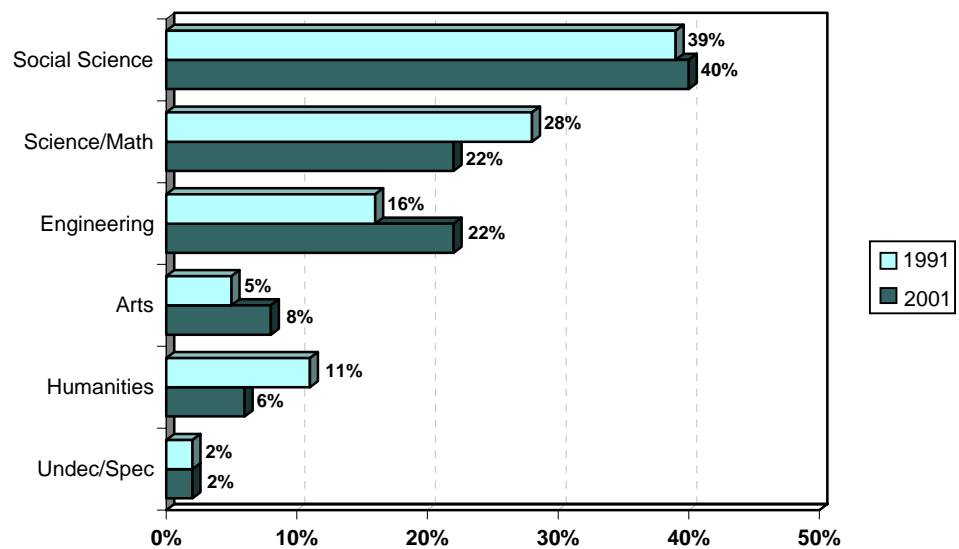


Table 33.

New Transfers by Transfer Institution **Fall Quarter**

Transfer Institution	1991	1996	1997	1998	1999	2000	2001	10 Year Δ
• California Community Colleges	795 (85%)	815 (94%)	909 (95%)	868 (98%)	983 (98%)	1,057 (95%)	1,164 (93%)	+46%
Transfer Admission Guarantee (TAG)	259	185	190	159	184	171	156	-40%
Non-TAG	536	630	719	709	799	886	1,008	+88%
• Intercampus Transfer/ Other 4 yr. College	91 (10%)	42 (5%)	42 (4%)	16 (2%)	12 (1%)	48 (4%)	75 (6%)	-18%
• Other/Unknown	45 (5%)	6 (1%)	14 (1%)	4 (0%)	12 (1%)	6 (1%)	11 (1%)	-76%
Total	931	863	965	888	1,007	1,111	1,250	+34%

Ninety-three percent of new transfer students attended a California Community College prior to enrolling at UCSD. The largest number of new transfer students come from either San Diego or Los Angeles county.

Table 34.

New Transfers by Home Location **Fall Quarter**

Home Location	1991	1996	1997	1998	1999	2000	2001	10 Year Δ
• San Diego	489 (53%)	414 (48%)	428 (44%)	325 (37%)	362 (36%)	362 (33%)	374 (30%)	-24%
• Los Angeles	249 (27%)	250 (29%)	265 (27%)	291 (33%)	320 (32%)	354 (32%)	386 (31%)	+55%
• San Francisco	103 (11%)	95 (11%)	125 (13%)	129 (15%)	152 (15%)	182 (16%)	218 (17%)	+112%
• Other California	75 (8%)	66 (8%)	107 (11%)	100 (11%)	118 (12%)	136 (12%)	147 (12%)	+96%
• Out-of-State	5 (1%)	4 (0%)	4 (0%)	2 (0%)	6 (0%)	6 (1%)	6 (0%)	+20%
• Foreign	10 (1%)	32 (4%)	36 (4%)	41 (5%)	49 (5%)	71 (6%)	119 (10%)	+1090%
Total	931	863	965	888	1,007	1,111	1,250	+34%

Table 35.

New Transfers by Undergraduate College **Fall Quarter**

Undergraduate College	1991	1996	1997	1998	1999	2000	2001	10 Year Δ
• Revelle	120 (13%)	134 (16%)	132 (14%)	133 (15%)	142 (14%)	160 (14%)	217 (17%)	+81%
• John Muir	295 (32%)	227 (26%)	214 (22%)	193 (22%)	239 (24%)	283 (25%)	270 (22%)	-8%
• Thurgood Marshall	213 (23%)	164 (19%)	224 (23%)	223 (25%)	254 (25%)	247 (22%)	277 (22%)	+30%
• Earl Warren	214 (23%)	277 (32%)	302 (31%)	265 (30%)	264 (26%)	281 (25%)	282 (23%)	+32%
• Eleanor Roosevelt	89 (10%)	61 (7%)	93 (10%)	74 (8%)	108 (11%)	140 (13%)	204 (16%)	+129%
Total	931	863	965	888	1,007	1,111	1,250	+34%

In 2001, Earl Warren College enrolled the largest number of transfer students, followed closely behind by Thurgood Marshall and John Muir Colleges.

Figure 18.

New Transfers by Undergraduate College **Fall Quarter**

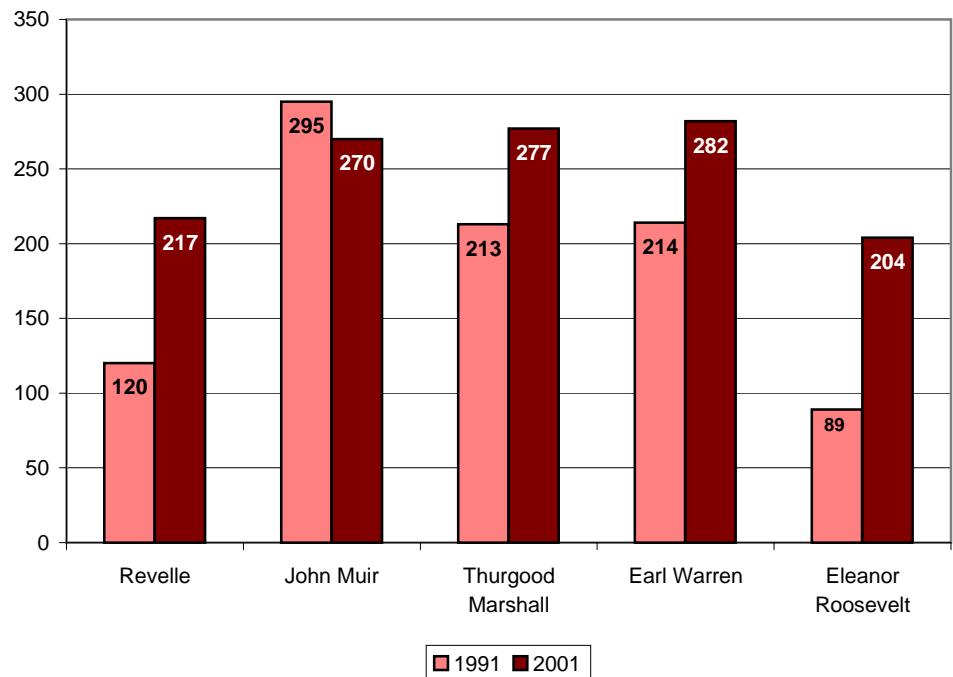


Table 36.

New Transfers by 1st Generation College Status Fall Quarter

College Status	1991	1996	1997	1998	1999	2000	2001	10 Year Δ
• First Generation	NA	345	344	286	339	366	388	NA
	NA	(40%)	(36%)	(32%)	(34%)	(33%)	(31%)	
• Not First Generation	NA	518	621	602	668	745	862	NA
	NA	(60%)	(64%)	(68%)	(66%)	(67%)	(69%)	
Total	NA	863	965	888	1,007	1,111	1,250	NA

The majority of new transfer students have at least one parent who has graduated from a two-year junior college or four-year college/university.

Table 37.

New Transfers by Income Group Fall Quarter

Income	1991	1996*	1997*	1998*	1999*	2000	2001	10 Year Δ
• High (≥\$98,401)	NA	95	118	151	153	183	249	NA
	NA	(11%)	(12%)	(17%)	(15%)	(16%)	(20%)	
• Medium High (\$65,601 - \$98,400)	NA	91	142	111	125	139	154	NA
	NA	(11%)	(15%)	(13%)	(12%)	(13%)	(12%)	
• Medium Low (\$32,801 - \$65,600)	NA	142	142	163	221	216	245	NA
	NA	(16%)	(15%)	(18%)	(22%)	(19%)	(20%)	
• Low (≤\$32,800)	NA	165	170	165	221	212	233	NA
	NA	(19%)	(18%)	(19%)	(22%)	(19%)	(19%)	
• Missing	NA	370	393	298	287	361	369	NA
	NA	(43%)	(41%)	(34%)	(29%)	(32%)	(30%)	
Total	NA	863	965	888	1,007	1,111	1,250	NA

* 1996-1999 Income Categories:
 High = Income ≥ \$87,001
 Medium High = \$58,001-\$87,000
 Medium Low = \$29,001-\$58,000
 Low = Income ≤ \$29,000

Table 38.

Major* Feeder Transfer Institutions **Fall Quarter**

School	City	Enrollment N Fall 2001	% of Total Enrollment
San Diego Mesa College	San Diego	115	9.2%
Palomar College	San Marcos	69	5.5%
Grossmont Community College	El Cajon	66	5.3%
Santa Monica College	Santa Monica	57	4.6%
De Anza College	Cupertino	55	4.4%
Diablo Valley College	Pleasant Hills	51	4.1%
Southwestern College	Chula Vista	46	3.7%
Mira Costa College	Oceanside	41	3.3%
Pasadena City College	Pasadena	41	3.3%
Orange Coast College	Costa Mesa	38	3.0%
Saddleback Community College South	Mission Viejo	32	2.6%
Foothill College	Los Altos Hills	27	2.2%
Moorpark College	Moorpark	23	1.8%
Santa Barbara City College	Santa Barbara	22	1.8%
El Camino College	Torrance	20	1.6%
San Diego-Miramar College	San Diego	19	1.5%
College of San Mateo	San Mateo	18	1.4%
San Diego City College	San Diego	18	1.4%
UC Santa Cruz	Santa Cruz	18	1.4%
College of the Canyons	Valencia	16	1.3%
Mount San Antonio College	Walnut	16	1.3%
UC Santa Barbara	Santa Barbara	15	1.2%
Chabot College	Hayward	14	1.1%
City College of San Francisco	San Francisco	13	1.0%
Sierra College	Rocklin	13	1.0%
UC Riverside	Riverside	13	1.0%
West Valley College	Saratoga	13	1.0%
Antelope Valley College	Lancaster	12	1.0%
American River College	Sacramento	11	0.9%
Bakersfield College	Bakersfield	11	0.9%
Fresno City College	Fresno	11	0.9%
Los Angeles Pierce College	Woodland Hills	11	0.9%
Ventura Community College	Ventura	11	0.9%
Cuyamaca College	El Cajon	10	0.8%
Santa Rosa Junior College	Santa Rosa	10	0.8%
Long Beach City College	Long Beach	9	0.7%
Los Angeles Valley College	Van Nuys	9	0.7%
Subtotal (Number of Transfer Institutions = 37)		994	79.5%
Other Institutions (Number of Transfer Institutions = 92)		256	20.5%
Total (Number of Transfer Institutions = 129)		1,250	100.0%

* Nine or more matriculants from named transfer institution.

With 115 students transferring to UCSD (9.2% of the total), San Diego Mesa College tops the list of major feeder transfer institutions.



**New
Transfer
Student
Academic
Preparation**

■ Academic Preparation: New Transfer Students

Table 39.

New Transfer Cohort by Transfer GPA Averages Fall Quarter

Transfer	1991	1996	1997	1998	1999	2000	2001
• Transfer GPA	3.09	3.27	3.29	3.27	3.25	3.29	3.30

Table 40.

New Transfer Cohort by Academic Indicator Ranges Fall Quarter

Transfer GPA Range	Percentage in Range	
	1991	2001
• 4.00	3%	3%
• 3.90 - 3.99	2%	3%
• 3.60 - 3.89	14%	18%
• 3.30 - 3.59	21%	25%
• Low - 3.29	60%	51%
Total	100%	100%

] 19%] 24%

The mean transfer GPA for the 2001 new transfer cohort was 3.30.

Approximately, 24% of the new transfer cohort had a GPA of 3.60 and higher.



**■ Degrees
Conferred**

■ Degrees Conferred

Setting a new record, UCSD awarded more than forty-seven hundred undergraduate, graduate and professional degrees in 2000/2001.

Table 41.

Degrees Conferred: All Degree Types Fall Quarter

All Degree Types	1990/1991	1996/1997	1997/1998	1998/1999	1999/2000	2000/2001	10 Year Δ
• Bachelors	3,024	3,319	3,221	3,574	3,530	3,713	+23%
• Masters	389	364	404	358	408	423	+9%
• Candidate in Philosophy	144	148	178	120	150	147	+2%
• Doctor of Philosophy	214	281	310	303	294	285	+33%
• Doctor of Medicine	120	202	102	35	130	136	+13%
Total	3,891	4,314	4,215	4,390	4,512	4,704	+21%

Figure 19.

Degrees Conferred Undergraduate and Graduate Degree Trends Fall Quarter

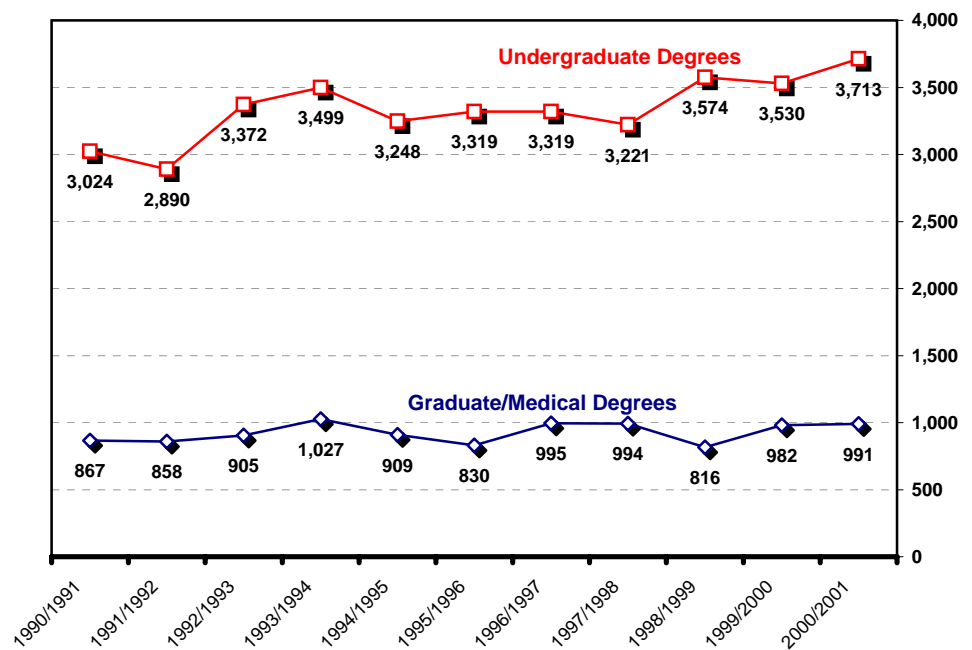


Table 42.

Undergraduate Degrees by Gender Fall Quarter

Gender	1990/1991	1996/1997	1997/1998	1998/1999	1999/2000	2000/2001	10 Year Δ
• Male	1,575 (52%)	1,656 (50%)	1,554 (48%)	1,728 (48%)	1,665 (47%)	1,691 (46%)	+7%
• Female	1,449 (48%)	1,663 (50%)	1,667 (52%)	1,846 (52%)	1,865 (53%)	2,022 (54%)	+40%
Total UG Degrees	3,024	3,319	3,221	3,574	3,530	3,713	+23%

Of the 3,713 undergraduate degrees awarded in 2000/2001, the majority (54%) were awarded to women.

Figure 20.

Undergraduate Degrees by Gender Fall Quarter

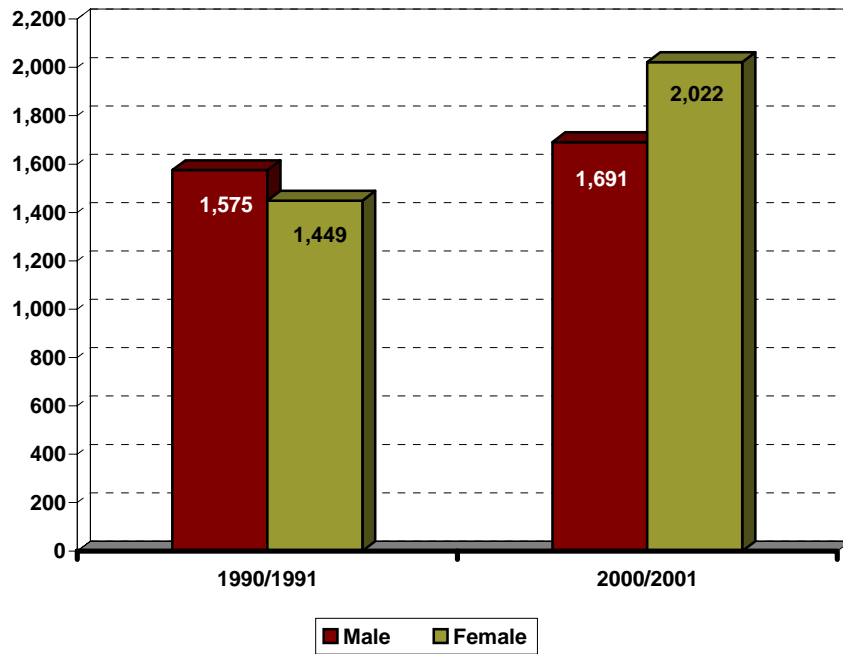


Table 43.

Undergraduate Degrees by Ethnicity Fall Quarter

Ethnicity	1990/1991	1996/1997	1997/1998	1998/1999	1999/2000	2000/2001	10 Year Δ
• African-American	68 (2%)	68 (2%)	72 (2%)	57 (2%)	65 (2%)	59 (2%)	-13%
• Mexican-American	153 (5%)	277 (8%)	279 (9%)	276 (8%)	255 (7%)	293 (8%)	+92%
• Native-American	18 (1%)	20 (1%)	29 (1%)	24 (1%)	35 (1%)	34 (1%)	+89%
• Asian	435 (14%)	784 (24%)	807 (25%)	1,005 (28%)	1,011 (29%)	1,029 (28%)	+137%
• Caucasian	1,984 (66%)	1,644 (50%)	1,494 (46%)	1,616 (45%)	1,482 (42%)	1,550 (42%)	-22%
• Filipino	123 (4%)	145 (4%)	185 (6%)	173 (5%)	213 (6%)	193 (5%)	+57%
• Latino	60 (2%)	89 (3%)	78 (2%)	84 (2%)	64 (2%)	95 (3%)	+58%
• Other/Undeclared	183 (6%)	292 (9%)	277 (9%)	339 (9%)	405 (11%)	460 (12%)	+151%
Total UG Degrees	3,024	3,319	3,221	3,574	3,530	3,713	+23%

The proportion of bachelor's degrees awarded to Asian students has doubled over the past decade.

Figure 21.

Undergraduate Degrees by Ethnicity Fall Quarter

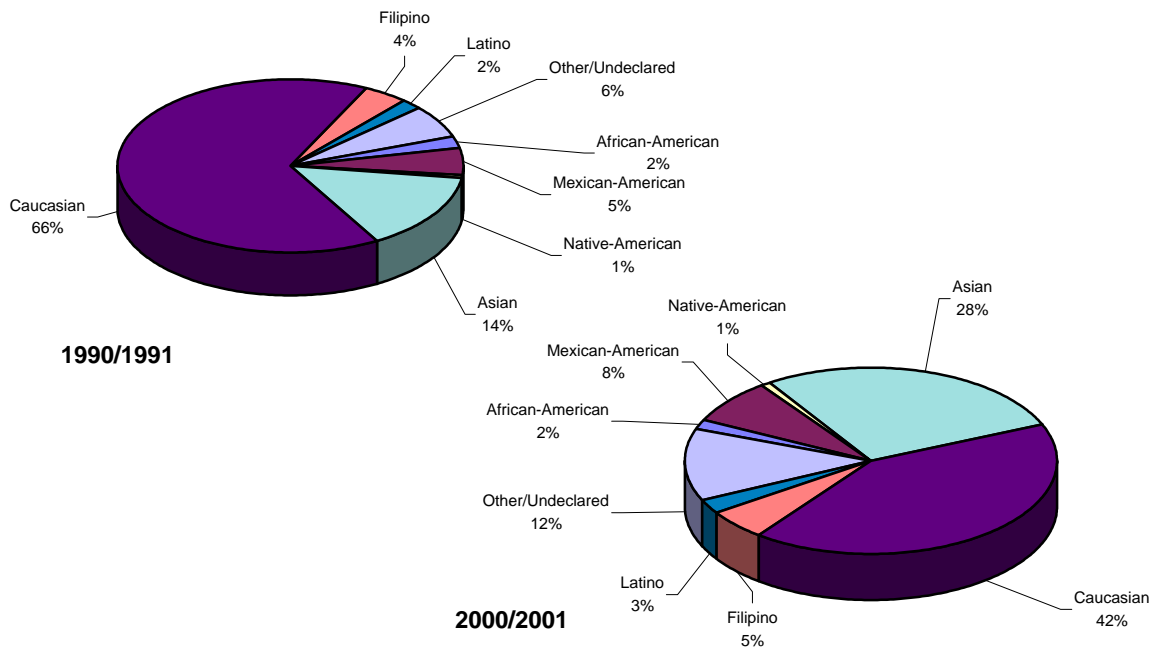


Table 44.

Undergraduate Degrees by Major Field of Study Fall Quarter

Major Field of Study	1990/1991	1996/1997	1997/1998	1998/1999	1999/2000	2000/2001	10 Year Δ
• Arts	146 (5%)	168 (5%)	123 (4%)	156 (4%)	147 (4%)	214 (6%)	+47%
• Engineering	421 (14%)	398 (12%)	402 (12%)	446 (13%)	533 (15%)	540 (15%)	+28%
• Humanities	288 (10%)	307 (9%)	291 (9%)	312 (9%)	250 (7%)	273 (7%)	-5%
• Science/Math	657 (22%)	1,122 (34%)	1,040 (32%)	1,160 (32%)	1,102 (31%)	1,029 (28%)	+57%
• Social Science	1,356 (45%)	1,320 (40%)	1,362 (42%)	1,494 (42%)	1,494 (42%)	1,649 (44%)	+22%
• Double/Special	156 (5%)	4 (0%)	3 (0%)	6 (0%)	4 (0%)	8 (0%)	-95%
Total UG Degrees	3,024	3,319	3,221	3,574	3,530	3,713	+23%

The largest number of bachelor's degrees were awarded to Social Science majors.

Table 45.

Undergraduate Degrees by College Fall Quarter

College	1990/1991	1996/1997	1997/1998	1998/1999	1999/2000	2000/2001	10 Year Δ
• Revelle	688 (23%)	599 (18%)	564 (18%)	708 (20%)	682 (19%)	650 (18%)	-6%
• John Muir	826 (27%)	846 (25%)	840 (26%)	837 (23%)	766 (22%)	847 (23%)	+3%
• Thurgood Marshall	696 (23%)	652 (20%)	635 (20%)	751 (21%)	771 (22%)	804 (22%)	+16%
• Earl Warren	814 (26%)	845 (25%)	856 (27%)	888 (25%)	938 (27%)	968 (26%)	+19%
• Eleanor Roosevelt	NA* NA*	377 (11%)	326 (10%)	390 (11%)	373 (11%)	444 (12%)	NA
Total UG Degrees	3,024	3,319	3,221	3,574	3,530	3,713	+23%

* Eleanor Roosevelt College enrolled its first class of undergraduates in 1988.

Table 46.

Undergraduate Degrees by 1st Generation College Status Fall Quarter

College Status	1990/1991	1996/1997	1997/1998	1998/1999	1999/2000	2000/2001	10 Year Δ
• First Generation	NA	572	613	855	793	859	NA
	NA	(17%)	(19%)	(24%)	(22%)	(23%)	
• Not First Generation	NA	2,747	2,608	2,719	2,737	2,854	NA
	NA	(83%)	(81%)	(76%)	(78%)	(77%)	
Total UG Degrees	NA	3,319	3,221	3,574	3,530	3,713	NA

Table 47.

Undergraduate Degrees by Income Group Fall Quarter

Income	1990/1991	1996/1997*	1997/1998*	1998/1999*	1999/2000	2000/2001	10 Year Δ
• High (\geq \$98,401)	NA	609	613	721	746	758	NA
	NA	(18%)	(19%)	(20%)	(21%)	(20%)	
• Medium High (\$65,601 - \$98,400)	NA	512	545	564	655	614	NA
	NA	(15%)	(17%)	(16%)	(19%)	(17%)	
• Medium Low (\$32,801 - \$65,600)	NA	541	586	694	657	850	NA
	NA	(16%)	(18%)	(19%)	(19%)	(23%)	
• Low (\leq \$32,800)	NA	424	469	681	643	760	NA
	NA	(13%)	(15%)	(19%)	(18%)	(20%)	
• Missing	NA	1,233	1,008	914	829	731	NA
	NA	(37%)	(31%)	(26%)	(23%)	(20%)	
Total UG Degrees	NA	3,319	3,221	3,574	3,530	3,713	NA

* 1996-1999 Income Categories:

High = Income \geq \$87,001

Medium High = \$58,001-\$87,000

Medium Low = \$29,001-\$58,000

Low = Income \leq \$29,000

Table 48.

Time-to-Degree*/Academic Performance
Entered UCSD from High School Fall Quarter

Undergraduate Degrees	1990/1991	1996/1997	1997/1998	1998/1999	1999/2000	2000/2001
• Time-to-Degree						
Average Elapsed Time in Years	4.9 yrs.	4.4 yrs.	4.4 yrs.	4.4 yrs.	4.5 yrs.	4.4 yrs.
Average Elapsed Time in Quarters	14.1 qtrs.	13.3 qtrs.	13.3 qtrs.	13.3 qtrs.	13.5 qtrs.	13.2 qtrs.
• GPA at Graduation	3.01	3.15	3.14	3.14	3.14	3.16
GPA \geq 3.5 (B+ or greater)	12.3%	21.9%	21.0%	21.5%	21.5%	22.4%
3.00 \leq GPA < 3.5 (B to B+)	39.2%	42.5%	44.0%	42.6%	42.8%	44.3%
2.50 \leq GPA < 3.00 (C+ to B)	36.8%	28.5%	27.8%	28.2%	28.1%	26.4%
2.0 \leq GPA < 2.50 (C to C+)	11.6%	7.0%	7.2%	7.7%	7.6%	6.9%

* Time-to-degree is reported in elapsed quarters from first enrollment date to graduation. Only the records of students who enter UCSD in the Fall Quarter are included in time-to-degree calculations. An academic year is defined as three quarters; twelve quarters equal four years. Summer degrees are combined with Fall degrees, and combined, represent one quarter.

The average time-to-degree for undergraduate students entering from high school was just over 13 quarters or 4.4 years. The average GPA for the 2000/2001 graduating class was 3.16.

Figure 22.

Grade Distribution: Degree Recipients Fall Quarter

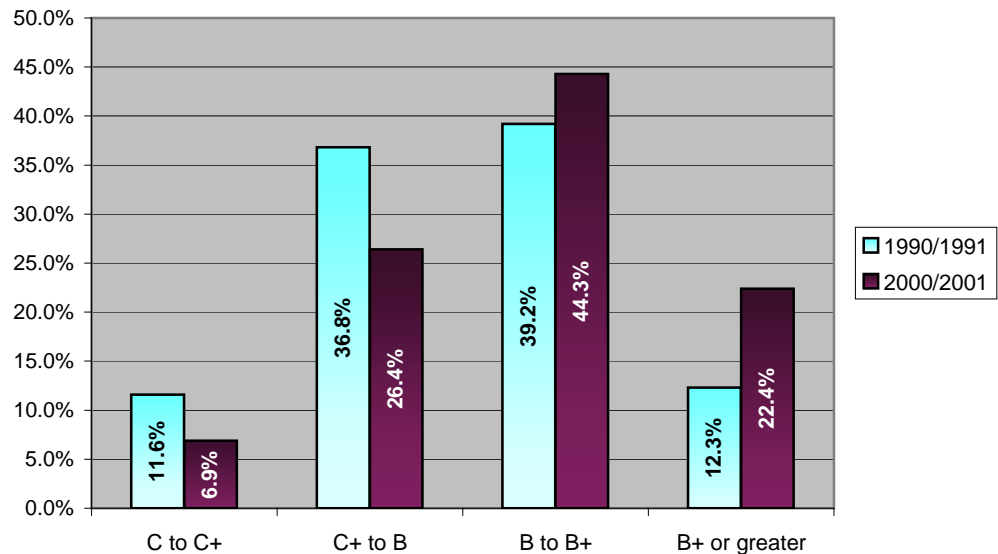


Table 49.

Time-to-Degree*/Academic Performance
Entered UCSD from a Two-Year Community College Fall Quarter

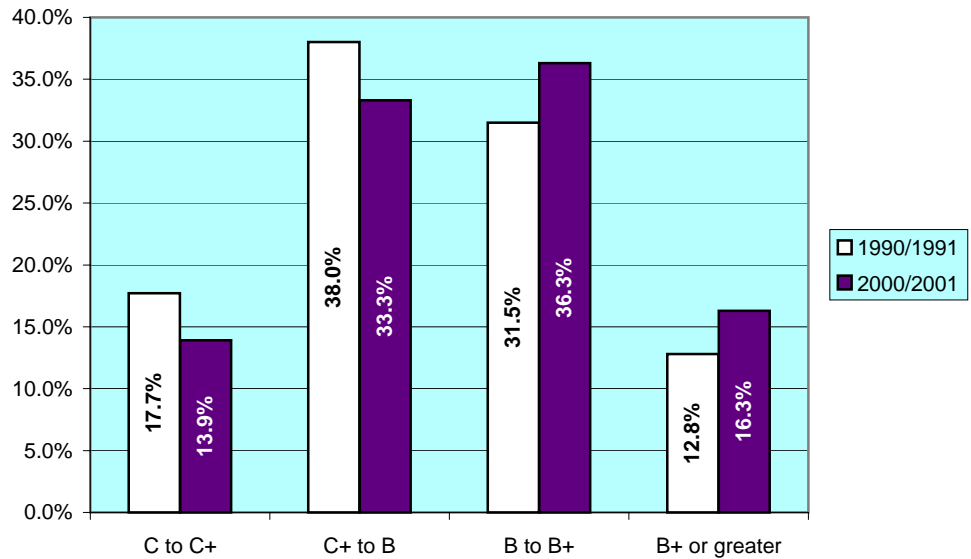
Undergraduate Degrees	1990/1991	1996/1997	1997/1998	1998/1999	1999/2000	2000/2001
• Time-to-Degree						
Average Elapsed Time in Years	3.8 yrs.	2.9 yrs.	3.0 yrs.	2.9 yrs.	3.0 yrs.	2.9 yrs.
Average Elapsed Time in Quarters	10.9 qtrs.	8.8 qtrs.	8.9 qtrs.	8.7 qtrs.	9.0 qtrs.	8.7 qtrs.
• GPA at Graduation	2.95	3.02	3.03	3.04	3.01	3.02
GPA \geq 3.5 (B+ or greater)	12.8%	17.3%	17.3%	17.7%	16.8%	16.3%
3.00 \leq GPA < 3.5 (B to B+)	31.5%	35.5%	36.7%	36.5%	34.6%	36.3%
2.50 \leq GPA < 3.00 (C+ to B)	38.0%	32.1%	32.4%	32.1%	32.1%	33.3%
2.0 \leq GPA < 2.50 (C to C+)	17.7%	15.2%	13.6%	13.7%	16.5%	13.9%

* Time-to-degree is reported in elapsed quarters from first enrollment date to graduation. Only the records of students who enter UCSD in the Fall Quarter are included in time-to-degree calculations. An academic year is defined as three quarters; twelve quarters equal four years. Summer degrees are combined with Fall degrees, and combined, represent one quarter.

Community College transfer students complete their degree requirements at UCSD in just under nine quarters or three years. The average GPA for the 2000/2001 graduating class for courses taken at UCSD was 3.02.

Figure 23.

Grade Distribution: Degree Recipients Fall Quarter





**■ Appendix:
Undergraduate
Major Fields
of Study /
Academic
Departments**

■ Undergraduate Major Fields of Study/Academic Departments

ARTS

Music Department

- MU01 Pre-Interdisciplinary Computing
- MU25 Music
- MU26 Music Humanities
- MU27 Interdisciplinary Computing and the Arts

Theatre & Dance Department

- TH26 Theatre
- TH27 Dance

Visual Arts Department

- VA01 Visual Arts (Computing and the Arts)
- VA02 Pre-Visual Arts (Media)
- VA26 Visual Arts (Art History/Criticism)
- VA27 Visual Arts (Media)
- VA28 Visual Arts (Studio)
- VA29 Interdisciplinary Computing and the Arts

SCHOOL OF ENGINEERING

Bioengineering Department

- BE01 Pre-Bioengineering
- BE02 Pre-Bioengineering: Pre-Medical
- BE03 Pre-Bioengineering: Biotechnology
- BE25 Bioengineering
- BE26 Bioengineering: Pre-Medical
- BE27 Bioengineering: Biotechnology

Chemical Engineering

- CE01 Pre-Chemical Engineering
- CE25 Chemical Engineering

Computer Science and Engineering Department

- CS25 Computer Engineering (see also Electrical and Computer Engineering EC26)
- CS26 Computer Science

Electrical and Computer Engineering Department

- EC26 Computer Engineering (see also Computer Science and Engineering CS25)
- EC27 Electrical Engineering
- EC28 Engineering Physics
- EC03 Pre-Electrical Engineering
- EC04 Pre-Engineering Physics

Mechanical and Aerospace Engineering Department

- MC25 Aerospace Engineering
- MC26 Chemical Engineering
- MC27 Mechanical Engineering
- MC28 Engineering Science

Structural Engineering

- SE25 Aerospace Engineering
- SE26 Engineering Sciences
- SE27 Structural Engineering

SCIENCE AND MATH

Biology Department

- BI01 Pre-Animal Physiology and Neuroscience
- BI02 Pre-Biochemistry and Cell Biology
- BI03 Pre-Ecology, Behavior and Evolution
- BI04 Pre-General Biology
- BI05 Pre-Microbiology
- BI06 Pre-Molecular Biology
- BI28 Animal Physiology and Neuroscience
- BI29 Biochemistry and Cell Biology
(see also Chemistry CH31)
- BI30 Ecology, Behavior and Evolution
- BI31 General Biology
- BI32 Microbiology
- BI33 Molecular Biology

Chemistry and Biochemistry Department

- CH31 Biochemistry/Chemistry (see also Biology BI29)
- CH25 Chemistry
- CH33 Chemical Education
- CH32 Chemical Physics
- CH28 Chemistry with Specialization in Earth Sciences
- CH34 Environmental Chemistry
- CH35 Pharmacological Chemistry

Earth Sciences Program

- EA25 Earth Sciences
- EA26 Earth Sciences - Chemistry
- EA27 Earth Sciences - Physics

Environmental Systems

- ES25 Environmental Systems (Earth Sciences)
- ES26 Environmental Systems (Ecology, Behavior, & Evolution)
- ES27 Environmental Systems (Environmental Chemistry)
- ES28 Environmental Systems (Environmental Policy)

Mathematics Department

- MA28 Applied Mathematics (Scientific Programming)
- MA29 Mathematics
- MA27 Mathematics (Applied)
- MA31 Mathematics/Applied Science
- MA30 Mathematics-Computer Science
- MA32 Mathematics/Secondary Education
- MA33 Joint Major in Mathematics & Economics

Physics Department

- PY30 General Physics
- PY31 General Physics, Secondary Education
- PY29 Physics
- PY26 Physics-Biophysics
- PY28 Physics with Specialization in Earth Sciences
- PY32 Physics with Specialization in Materials Physics
- PY33 Physics with Specialization in Computational Physics
- PY34 Physics with Specialization in Astrophysics

HUMANITIES

Classical Studies

CL25 Classical Studies

History Department

HI25 History

Literature Department

LT29 French Literature
 LT31 German Literature
 LT35 Italian Literature
 LT36 Literatures in English
 LT38 Literatures of the World
 LT37 Literature/Composite Major
 LT34 Literature/Writing
 LT01 Pre-Literature/Writing
 LT32 Russian Literature
 LT33 Spanish Literature

Philosophy Department

PL25 Philosophy

SOCIAL SCIENCE

Anthropology Department

AN25 Anthropology
 AN26 Anthropology (Concentration in Biological Anthropology)
 AN27 Anthropology (Concentration in Archaeology)

Chinese Studies

CN25 Chinese Studies

Cognitive Science Department

CG25 Cognitive Science
 CG26 Cognitive Science with Specialization in
 Clinical Applications
 CG27 Cognitive Science with Specialization in Computation
 CG28 Cognitive Science with Specialization in
 Human Cognition
 CG29 Cognitive Science with Specialization in Neuroscience
 CG30 Cognitive Science with Specialization in Hum. Comp. Inter.

Communication Department

CM26 Communication

Critical Gender Studies

CR25 Critical Gender Studies

Economics Department

EN25 Economics
 EN26 Management Science
 EN28 Joint Major in Mathematics & Economics

Ethnic Studies Department

ET25 Ethnic Studies

German Studies

GS25 German Studies

Human Development Program

HD25 Human Development

Italian Studies

IT25 Italian Studies

SOCIAL SCIENCE - continued

Japanese Studies

JA25 Japanese Studies

Judaic Studies

JU25 Judaic Studies

Latin American Studies

LA25 Latin American Studies

Linguistics Department

LN25 Linguistics
 LN29 Linguistics (Specialization in Language and Society)
 LN32 Linguistics (Specialization in Cognition & Language)
 LN33 Language Studies (Specialization in [the language of
 specialization])

Political Science Department

PS25 Political Science
 PS26 Political Science-American Politics
 PS27 Political Science-Comparative Politics
 PS28 Political Science-International Relations
 PS29 Political Science-Political Theory
 PS30 Political Science-Public Law
 PS31 Political Science-Public Policy

Psychology Department

PC26 Psychology

Program for the Study of Religion

RE26 Study of Religion

Russian and Soviet Studies

RU25 Russian and Soviet Studies

Sociology Department

SO25 Sociology

Third World Studies

TW25 Third World Studies

Urban Studies and Planning Program

US26 Urban Studies and Planning

SPECIAL AND UNDECLARED

Individual Studies

IN27 Eleanor Roosevelt College Individual Studies
 IN25 John Muir College Special Project Major
 IN26 Revelle College Individual Major
 IN29 Thurgood Marshall College Individual Studies
 IN28 Earl Warren College Individual Studies

Undeclared

UN27 Undeclared

Limited Status

Special-Employee

