



University of California,  
San Diego

FALL 2003



# STUDENT **digest**



Enrollment  
and Academic  
Performance  
Statistics

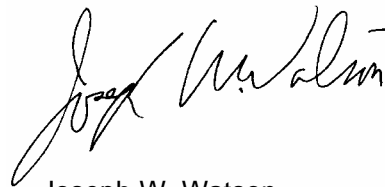
Office of Student Research & Information  
Student Affairs

<http://ugr8.ucsd.edu>

---

## ■ INTRODUCTION

The *Student Digest*, published annually by the Office of Student Research and Information, provides the campus community with a broad overview of trends in undergraduate enrollments, academic performance and graduation statistics. If you have questions or comments regarding this publication, please contact the Office of Student Research and Information/Student Affairs at (858) 534-2382. If you wish to view this report and other statistical reports, they can be found on the World Wide Web at <http://ugr8.ucsd.edu>.



Joseph W. Watson  
Vice Chancellor

---

# **STUDENT DIGEST**

## **Enrollment and Academic Performance Statistics**

**Fall 2003**

**University of California, San Diego**

**William B. Armstrong, Ph.D.**  
Director

**Heidi M. Carty, Ph.D.**  
Principal Research Analyst

**Greg Martin**  
Programmer Analyst

**Jason R. Thornton**  
Research Analyst

**Student Research & Information**  
Student Affairs  
University of California, San Diego  
La Jolla, CA 92093-0088  
<http://ugr8.ucsd.edu>

# ■ Table of Contents

<b>Total Campus Enrollment</b>	<b>4</b>
Total Campus Population Summary	5
<b>Total Undergraduate Enrollment</b>	<b>6</b>
By Class Level	7
By Gender	8
By Ethnicity	9
By Major Field of Study	10
By Major Department	11
By College	12
<b>Academic Profile: Undergraduates</b>	<b>13</b>
Total Undergraduate Population Summary	14
By Class Level	15
By Major Field of Study	16
<b>New Students</b>	<b>17</b>
New Student Enrollments	18
<b>First-Time Freshmen</b>	<b>19</b>
Applicants, Admits & Registered	20
By Gender	21
By Ethnicity	22
By Major Field of Study	23
By Major Department at Time of Admission	24
By College & Home Location	25
By 1st Generation College Status & Income Group	26
Major Feeder High Schools	27
<b>High School Grades and SAT Scores</b>	<b>28</b>
Indicators of Academic Preparation	29
High School GPA by Gender, Ethnicity, Major Field of Study, Home Location, 1st Generation College Status & Income	30
SAT I Scores by Gender, Ethnicity, Major Field of Study, Home Location, 1st Generation College Status & Income	31
SAT II Scores by Gender, Ethnicity, Major Field of Study, Home Location, 1st Generation College Status & Income	32
UCSD/UC Systemwide Comparison	33
<b>New Transfer Students</b>	<b>34</b>
Applicants, Admits & Registered	35
By Gender	36
By Ethnicity	37
By Major Field of Study	38
By Transfer Institution & Home Location	39
By Undergraduate College	40
By 1st Generation College Status & Income Group	41
Major Feeder Transfer Institutions	42
<b>New Transfer Student Academic Preparation</b>	<b>43</b>
Indicators of Academic Preparation	44
<b>Degrees Conferred</b>	<b>45</b>
All Degree Types	46
Bachelor Degrees by Gender	47
Bachelor Degrees by Ethnicity	48
Bachelor Degrees by Major Field of Study & College	49
Bachelor Degrees by First Generation College Status & Income	50
Time-to-Degree/Academic Performance for Students Who Entered UCSD from High School	51
Time-to-Degree/Academic Performance for Students Who Entered UCSD from a Two-Year Community College	52
<b>Appendix: Undergraduate Major Fields of Study/ Academic Departments</b>	<b>53</b>



**■ Total  
Campus  
Enrollment**

# ■ TOTAL CAMPUS ENROLLMENT

More than twenty-four thousand students are enrolled at UCSD - showing an increase of 38% over the past decade. UCSD enrolled a record number of 19,872 undergraduate students, and 4,835 graduate and medical students.

Table 1.

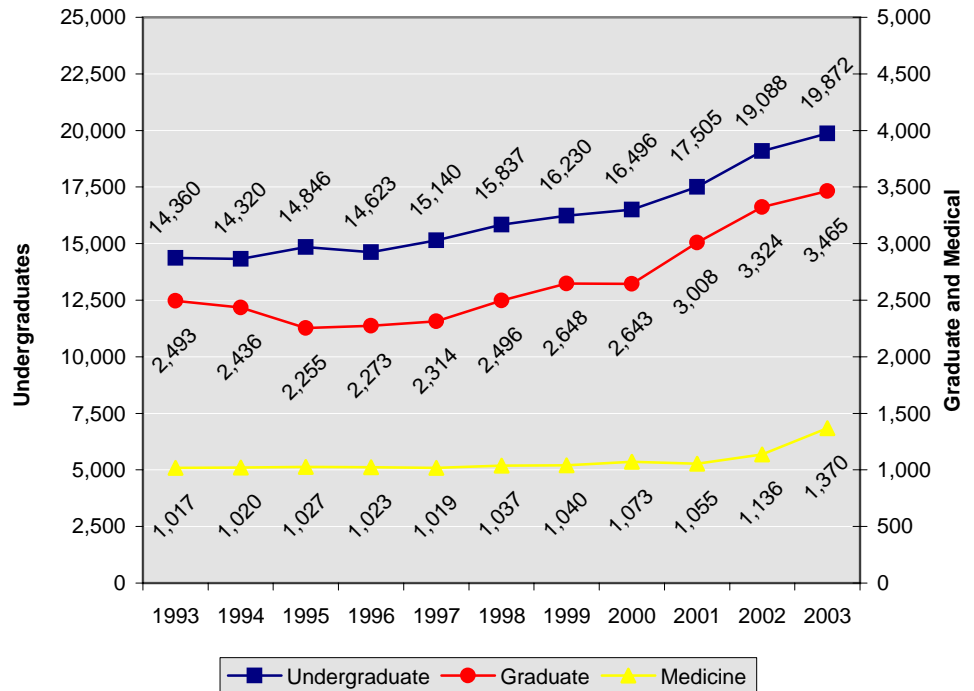
## Total Campus Enrollment: The Past Decade Fall Quarter

UCSD Enrollment	1993	1998	1999	2000	2001	2002	2003	10 Year Δ
• Undergraduate	14,360	15,837	16,230	16,496	17,505	19,088	19,872	+38%
• Graduate *	2,493	2,496	2,648	2,643	3,008	3,324	3,465	+39%
• Medicine	1,017	1,037	1,040	1,073	1,055	1,136	1,370	+35%
<b>Total Campus Enrollment</b>	<b>17,870</b>	<b>19,370</b>	<b>19,918</b>	<b>20,212</b>	<b>21,568</b>	<b>23,548</b>	<b>24,707</b>	<b>+38%</b>

\* includes Teacher Education Program.

Figure 1.

## Total Campus Enrollment: The Past Decade Fall Quarter





**■ Total  
Undergraduate  
Enrollment**

# Undergraduate Enrollment

Undergraduate enrollments have increased by 38% over the past ten years. The majority of undergraduate students (61%) at UCSD are upper division students.

Table 2.

## Undergraduate Enrollment by Class Level Fall Quarter

The Undergraduates	1993	1998	1999	2000	2001	2002	2003	10 Year Δ
• Lower Division	5,724 40%	6,809 43%	6,811 42%	6,557 40%	7,214 41%	8,059 42%	7,847 39%	+37%
Freshman	2,867	3,770	3,651	3,366	4,185	4,350	3,973	+39%
Sophomore	2,857	3,039	3,160	3,191	3,029	3,709	3,874	+36%
• Upper Division	8,636 60%	9,028 57%	9,419 58%	9,939 60%	10,291 59%	11,029 58%	12,025 61%	+39%
Junior	3,851	3,875	4,319	4,640	4,705	4,920	5,523	+43%
Senior	4,785	5,153	5,100	5,299	5,586	6,109	6,502	+36%
<b>Total UG Enrollment</b>	<b>14,360</b>	<b>15,837</b>	<b>16,230</b>	<b>16,496</b>	<b>17,505</b>	<b>19,088</b>	<b>19,872</b>	<b>+38%</b>

Figure 2.

## Total Undergraduate Enrollment Trends by Class Level Fall Quarter

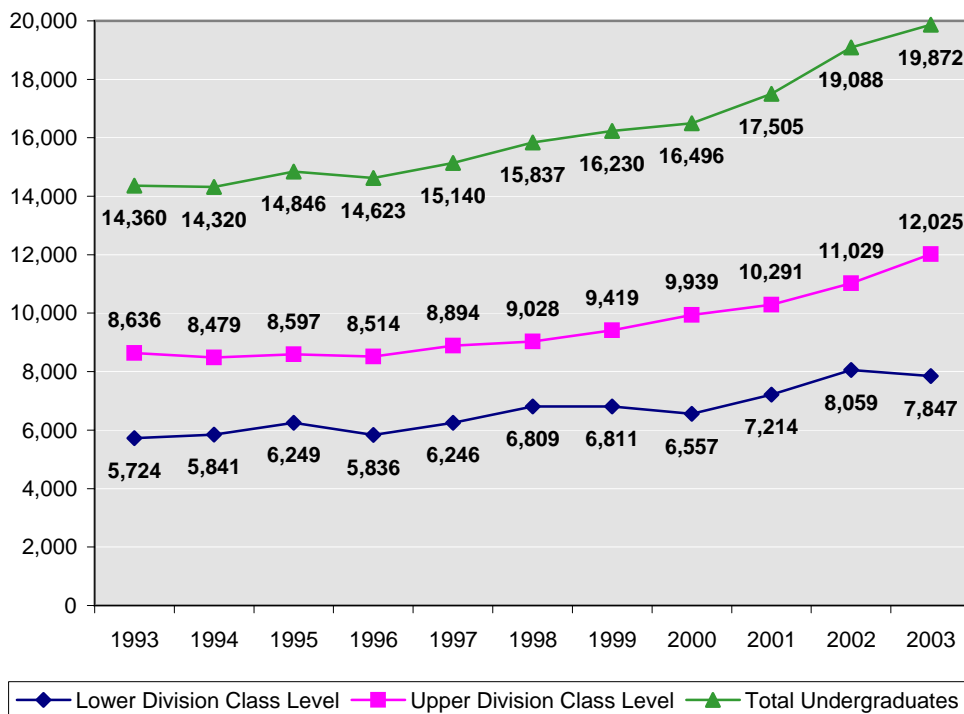




Table 3.

**Undergraduates by Gender** Fall Quarter

Gender	1993	1998	1999	2000	2001	2002	2003	10 Year Δ
• Male	7,352 51%	7,683 49%	7,759 48%	7,891 48%	8,400 48%	9,175 48%	9,513 48%	+29%
• Female	7,008 49%	8,154 51%	8,471 52%	8,605 52%	9,105 52%	9,913 52%	10,359 52%	+48%
<b>Total UG Enrollment</b>	<b>14,360</b>	<b>15,837</b>	<b>16,230</b>	<b>16,496</b>	<b>17,505</b>	<b>19,088</b>	<b>19,872</b>	<b>+38%</b>

Women  
continue to  
outnumber  
men at UCSD  
by  
approximately  
four percent.

Figure 3.

**Undergraduate Enrollment by Gender** Fall Quarter

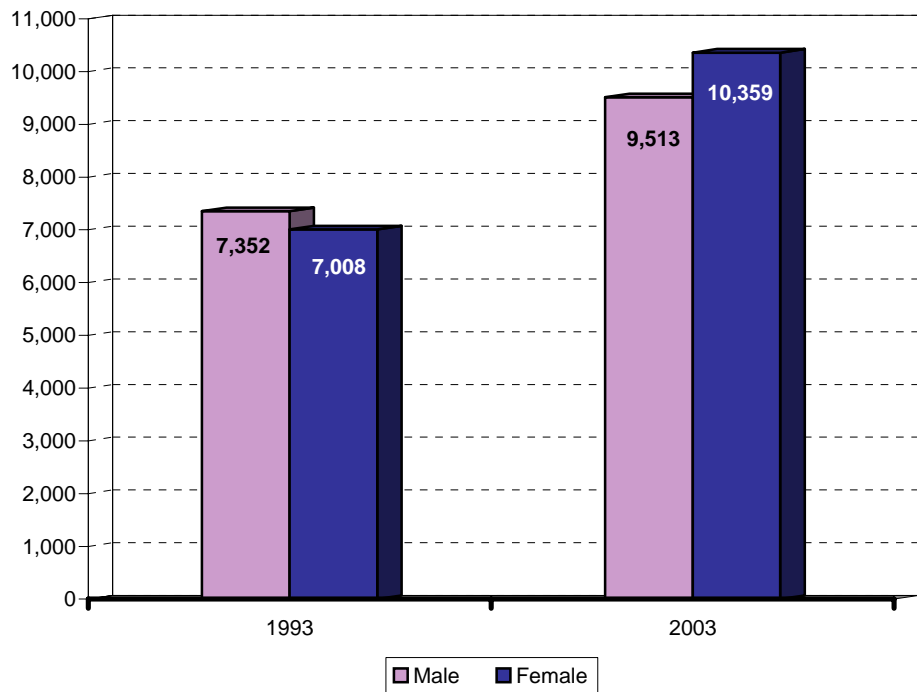


Table 4.

**Undergraduates by Ethnicity** Fall Quarter

Ethnicity	1993	1998	1999	2000	2001	2002	2003	10 Year Δ
• African-American	362 3%	277 2%	257 2%	224 1%	211 1%	219 1%	244 1%	-33%
• Mexican-American	1,220 8%	1,216 8%	1,226 8%	1,282 8%	1,322 8%	1,475 8%	1,584 8%	+30%
• Native-American	127 1%	134 1%	119 1%	99 1%	81 0%	91 0%	84 0%	-34%
• Asian	3,024 21%	4,632 29%	4,802 30%	4,948 30%	5,554 32%	6,426 34%	6,851 34%	+127%
• Caucasian	7,341 51%	6,323 40%	6,403 39%	6,429 39%	6,652 38%	6,981 37%	7,048 35%	-4%
• Filipino	624 4%	874 6%	869 5%	850 5%	896 5%	956 5%	979 5%	+57%
• Latino	345 2%	339 2%	350 2%	374 2%	375 2%	428 2%	470 2%	+36%
• Other/Undeclared	1,317 9%	2,042 13%	2,204 13%	2,290 14%	2,414 14%	2,512 13%	2,612 13%	+98%
<b>Total UG Enrollment</b>	<b>14,360</b>	<b>15,837</b>	<b>16,230</b>	<b>16,496</b>	<b>17,505</b>	<b>19,088</b>	<b>19,872</b>	<b>+38%</b>

Compared to 1993, there has been an increase in the proportion of Asian students and those identified as Other/Undeclared among the undergraduate population. At the same time, there has been a decrease in the proportion of African American and Caucasian students.

Figure 4.

**Undergraduate Enrollment by Ethnicity** Fall Quarter

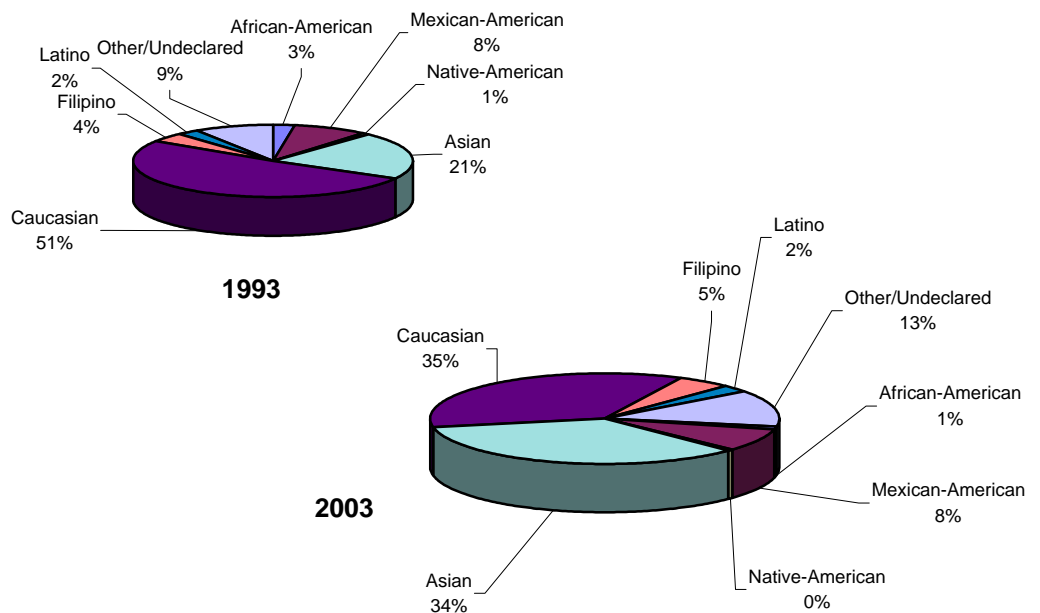


Table 5.

**Undergraduates by Major Field of Study** Fall Quarter

Major Field of Study	1993	1998	1999	2000	2001	2002	2003	10 Year Δ
• Arts	512 4%	565 4%	695 4%	800 5%	931 5%	1,047 5%	1,070 5%	+109%
• Engineering	2,568 18%	2,981 19%	3,136 19%	3,320 20%	3,855 22%	4,284 22%	4,331 22%	+69%
• Humanities	976 7%	822 5%	803 5%	748 5%	740 4%	806 4%	875 4%	-10%
• Science/Math	4,126 29%	4,863 31%	4,769 30%	4,444 27%	4,254 24%	4,405 23%	4,493 23%	+9%
• Social Science	4,321 30%	4,567 29%	5,067 31%	5,487 33%	5,830 33%	6,177 32%	6,515 33%	+51%
• Undec./Special	1,857 13%	2,039 13%	1,760 11%	1,697 10%	1,895 11%	2,369 12%	2,588 13%	+39%
<b>Total UG Enrollment</b>	<b>14,360</b>	<b>15,837</b>	<b>16,230</b>	<b>16,496</b>	<b>17,505</b>	<b>19,088</b>	<b>19,872</b>	<b>+38%</b>

The Social Sciences continue to be the most popular undergraduate field of study at UCSD.

Figure 5.

**Undergraduate Enrollment by Major Field of Study** Fall Quarter

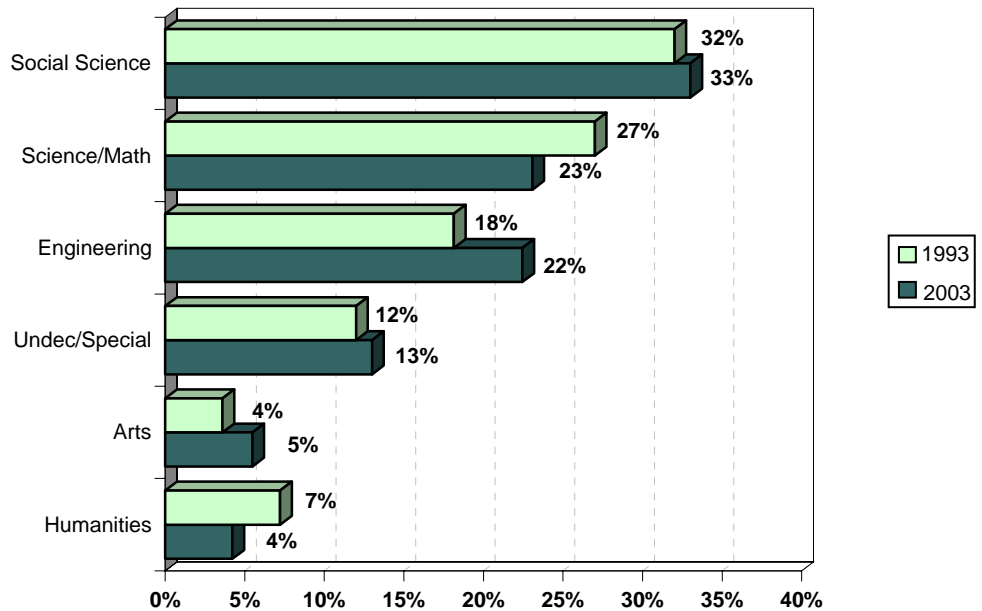


Table 6.

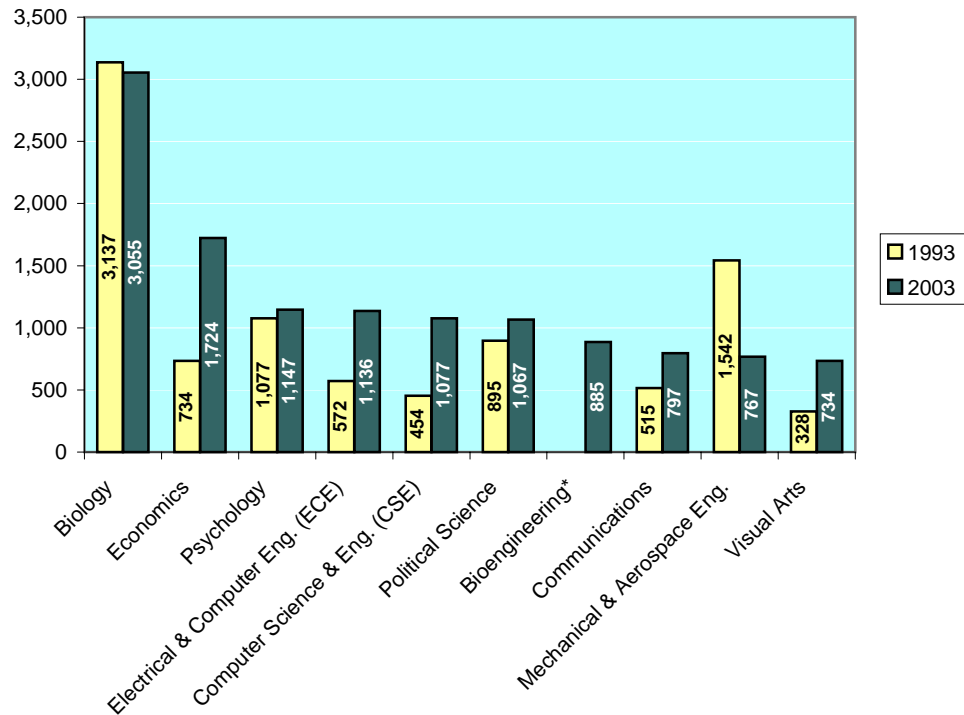
**Undergraduates by Major Department  
Ten Most Populous Departments** Fall Quarter

1993			2003		
Major Department	n	%	Major Department	n	%
Biology	3,137	21.8%	Biology	3,055	15.4%
Applied Mechanics & Eng. (AMES)	1,542	10.7%	Economics	1,724	8.7%
Psychology	1,077	7.5%	Psychology	1,147	5.8%
Political Science	895	6.2%	Electrical & Computer Eng. (ECE)	1,136	5.7%
Economics	734	5.1%	Computer Science & Eng. (CSE)	1,077	5.4%
Electrical & Computer Eng. (ECE)	572	4.0%	Political Science	1,067	5.4%
Literature	521	3.6%	Bioengineering*	885	4.5%
Communications	515	3.6%	Communications	797	4.0%
Computer Science & Eng. (CSE)	454	3.2%	Mechanical & Aerospace Eng.	767	3.9%
Chemistry	425	3.0%	Visual Arts	734	3.7%
<b>Other Departments</b>	<b>2,640</b>	<b>18.4%</b>	<b>Other Departments</b>	<b>4,899</b>	<b>24.7%</b>
<b>Undeclared Majors</b>	<b>1,848</b>	<b>12.9%</b>	<b>Undeclared Majors</b>	<b>2,584</b>	<b>13.0%</b>
<b>TOTAL</b>	<b>14,360</b>	<b>100.0%</b>	<b>TOTAL</b>	<b>19,872</b>	<b>100.0%</b>

Similar to 1993, the most popular undergraduate major at UCSD in 2003 is Biology. Economics has moved up three spots and is currently the second most popular major.

Figure 6.

**Ten Most Populous Departments** Fall Quarter



\* No equivalent department in 1993.  
Bioengineering established: Fall 1994

Table 7.

**Undergraduates by College** Fall Quarter

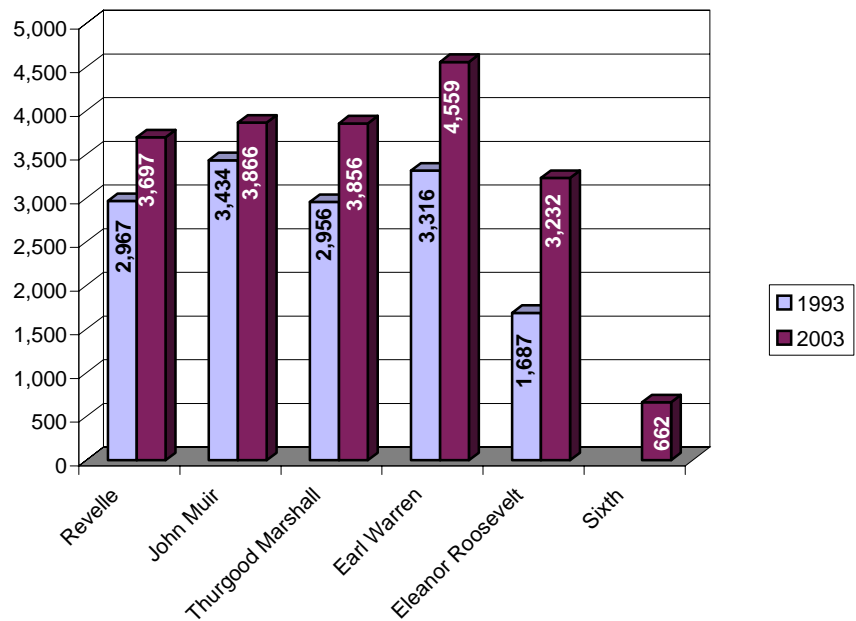
College	1993	1998	1999	2000	2001	2002	2003	10 Year Δ
• Revelle	2,967 21%	3,309 21%	3,364 21%	3,348 20%	3,504 20%	3,765 20%	3,697 19%	+25%
• John Muir	3,434 24%	3,415 22%	3,440 21%	3,503 21%	3,707 21%	3,833 20%	3,866 19%	+13%
• Thurgood Marshall	2,956 21%	3,203 20%	3,326 20%	3,342 20%	3,560 20%	3,794 20%	3,856 19%	+30%
• Earl Warren	3,316 23%	3,768 24%	3,816 24%	3,856 23%	4,046 23%	4,388 23%	4,559 23%	+37%
• Eleanor Roosevelt	1,687 12%	2,142 13%	2,284 14%	2,447 15%	2,688 15%	3,028 16%	3,232 16%	+92%
• Sixth*	NA NA	NA NA	NA NA	NA NA	NA NA	280 1%	662 3%	NA
<b>Total UG Enrollment</b>	<b>14,360</b>	<b>15,837</b>	<b>16,230</b>	<b>16,496</b>	<b>17,505</b>	<b>19,088</b>	<b>19,872</b>	

\* Note: Sixth College enrolled its first class of undergraduates in 2002.

With more than 4,500 students, Earl Warren College is currently the largest of the six undergraduate colleges.

Figure 7.

**Undergraduate Enrollments by College** Fall Quarter





**Academic  
Profile:  
Undergraduates**

# Academic Profile: Total Undergraduate Population

Table 8.

## Academic Profile Summary Fall Quarter

Undergraduates	1993	1998	1999	2000	2001	2002	2003
• UCSD GPA	2.98	2.98	2.98	3.00	3.02	3.02	3.02
GPA $\geq$ 3.5	15.2%	16.4%	16.7%	17.0%	18.2%	18.3%	19.0%
3.0 $\leq$ GPA < 3.5	35.8%	34.2%	34.0%	35.3%	35.5%	35.3%	35.4%
2.5 $\leq$ GPA < 3.0	32.4%	31.8%	31.4%	31.2%	30.8%	30.5%	30.0%
2.0 $\leq$ GPA < 2.5	13.8%	14.7%	14.9%	13.9%	13.1%	13.4%	12.9%
GPA < 2.0	2.8%	2.9%	3.0%	2.6%	2.4%	2.4%	2.7%

The mean grade point average (GPA) for all undergraduates at UCSD is 3.02 (B); 19% earned a GPA of 3.50 or higher.

Figure 8.

## Proportion of Student Body within GPA Ranges Fall Quarter

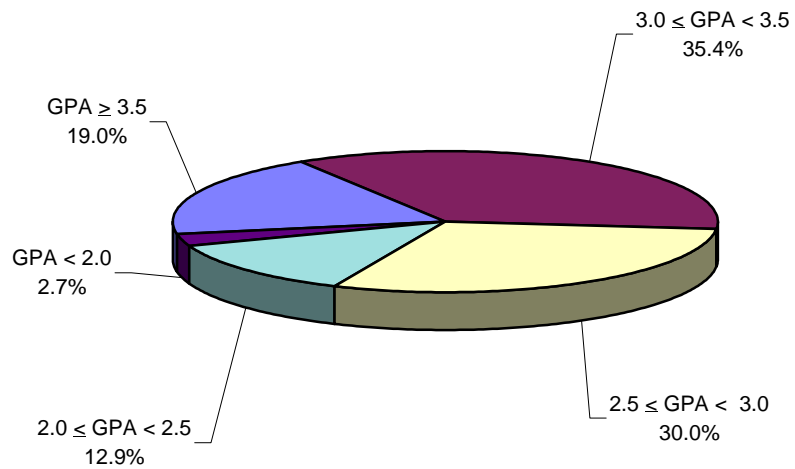


Table 9.

**Academic Profile by Class Level** **Fall Quarter**

Undergraduates	1993	1998	1999	2000	2001	2002	2003
• Freshman* (N = 3,307)							
Freshman GPA	2.83	2.87	2.92	2.91	2.96	2.94	2.92
GPA $\geq$ 3.5	17.5%	17.7%	20.9%	20.4%	23.6%	21.4%	22.1%
3.0 $\leq$ GPA < 3.5	27.7%	31.1%	32.7%	32.2%	32.3%	31.9%	31.9%
2.5 $\leq$ GPA < 3.0	27.6%	26.3%	22.9%	23.6%	23.4%	25.4%	23.3%
2.0 $\leq$ GPA < 2.5	16.9%	15.6%	15.3%	15.0%	13.2%	13.9%	13.7%
GPA < 2.0	10.2%	9.4%	8.2%	8.8%	7.4%	7.5%	9.0%
• Sophomore (N = 3,500)							
Sophomore GPA	2.97	2.95	2.98	2.99	3.02	3.01	3.00
GPA $\geq$ 3.5	14.7%	14.7%	17.0%	16.7%	18.8%	17.0%	17.4%
3.0 $\leq$ GPA < 3.5	34.8%	33.1%	32.9%	34.6%	35.8%	35.8%	36.0%
2.5 $\leq$ GPA < 3.0	32.9%	33.7%	32.2%	32.3%	29.4%	32.0%	29.8%
2.0 $\leq$ GPA < 2.5	14.8%	15.3%	14.9%	14.2%	13.0%	13.3%	14.2%
GPA < 2.0	2.7%	3.2%	3.1%	2.3%	2.9%	2.0%	2.6%
• Junior (N = 4,238)							
Junior GPA	2.99	3.01	2.99	3.00	3.03	3.02	3.04
GPA $\geq$ 3.5	15.5%	17.2%	16.3%	16.9%	18.4%	18.9%	19.2%
3.0 $\leq$ GPA < 3.5	37.8%	35.7%	35.9%	36.1%	35.9%	36.3%	37.3%
2.5 $\leq$ GPA < 3.0	31.3%	30.9%	31.6%	31.6%	31.2%	29.4%	29.9%
2.0 $\leq$ GPA < 2.5	11.9%	13.5%	13.3%	12.8%	12.5%	12.5%	11.2%
GPA < 2.0	3.5%	2.8%	2.9%	2.7%	2.1%	2.8%	2.4%
• Senior (N = 6,480)							
Senior GPA	3.00	3.02	3.01	3.03	3.03	3.04	3.05
GPA $\geq$ 3.5	15.7%	17.4%	17.8%	17.9%	18.3%	19.2%	20.5%
3.0 $\leq$ GPA < 3.5	36.1%	35.9%	35.2%	36.1%	36.4%	35.8%	35.5%
2.5 $\leq$ GPA < 3.0	33.0%	31.5%	30.7%	30.7%	31.2%	30.3%	30.0%
2.0 $\leq$ GPA < 2.5	13.7%	13.4%	14.4%	13.7%	12.5%	13.2%	12.0%
GPA < 2.0	1.5%	1.8%	1.9%	1.7%	1.6%	1.5%	2.0%
<b>Undergraduate GPA</b>	<b>2.98</b>	<b>2.98</b>	<b>2.98</b>	<b>3.00</b>	<b>3.02</b>	<b>3.02</b>	<b>3.02</b>

There is a positive relationship between student level and grade point average; as students advance in standing their grade point average generally increases.

\* Note: Freshman GPA data reflect grades for Winter quarter of first year enrolled.



Table 10.

**Academic Profile by Major Field of Study** **Fall Quarter**

Undergraduates	1993	1998	1999	2000	2001	2002	2003
• Arts (N = 889)							
Arts GPA	3.10	3.08	3.06	3.10	3.12	3.17	3.17
GPA $\geq$ 3.5	20.7%	18.7%	18.5%	18.7%	20.9%	24.3%	25.2%
3.0 $\leq$ GPA < 3.5	42.4%	43.2%	39.8%	45.3%	44.5%	45.2%	42.0%
2.5 $\leq$ GPA < 3.0	26.0%	26.3%	29.8%	25.8%	24.6%	22.3%	24.4%
2.0 $\leq$ GPA < 2.5	8.8%	10.5%	9.8%	8.7%	9.1%	7.6%	7.2%
GPA < 2.0	2.1%	1.4%	2.1%	1.6%	1.0%	0.6%	1.2%
• Engineering (N = 3,280)							
Engineering GPA	2.98	2.97	2.97	2.95	2.99	2.97	2.99
GPA $\geq$ 3.5	16.1%	15.7%	16.1%	15.6%	16.9%	16.7%	18.0%
3.0 $\leq$ GPA < 3.5	33.4%	32.5%	31.8%	31.4%	32.1%	31.0%	31.8%
2.5 $\leq$ GPA < 3.0	34.2%	34.3%	34.4%	34.6%	34.5%	34.1%	34.0%
2.0 $\leq$ GPA < 2.5	13.5%	14.8%	15.1%	15.7%	14.5%	16.0%	13.7%
GPA < 2.0	2.8%	2.7%	2.5%	2.8%	2.0%	2.1%	2.5%
• Humanities (N = 696)							
Humanities GPA	3.08	3.14	3.10	3.09	3.14	3.13	3.15
GPA $\geq$ 3.5	18.2%	25.0%	23.7%	22.1%	34.9%	23.9%	23.6%
3.0 $\leq$ GPA < 3.5	42.5%	40.3%	37.8%	38.0%	39.9%	41.0%	43.1%
2.5 $\leq$ GPA < 3.0	28.0%	22.7%	25.1%	28.7%	27.0%	24.5%	24.7%
2.0 $\leq$ GPA < 2.5	9.3%	10.2%	10.8%	8.8%	6.6%	8.6%	7.9%
GPA < 2.0	2.1%	1.8%	2.6%	2.5%	1.6%	2.0%	0.7%
• Science/Math (N = 3,440)							
Science/Math GPA	2.96	2.98	2.98	2.99	3.02	3.02	3.02
GPA $\geq$ 3.5	15.8%	18.5%	18.5%	18.8%	20.0%	19.7%	20.2%
3.0 $\leq$ GPA < 3.5	32.5%	31.0%	30.8%	31.6%	32.9%	33.5%	32.9%
2.5 $\leq$ GPA < 3.0	33.3%	32.3%	32.0%	31.6%	30.7%	30.3%	29.8%
2.0 $\leq$ GPA < 2.5	15.4%	15.3%	15.6%	15.2%	13.8%	13.8%	14.6%
GPA < 2.0	3.0%	2.9%	3.1%	2.8%	2.7%	2.6%	2.6%
• Social Science (N = 5,332)							
Social Science GPA	2.96	2.97	2.97	3.01	3.00	3.02	3.01
GPA $\geq$ 3.5	13.2%	13.4%	14.3%	15.5%	16.4%	17.2%	17.8%
3.0 $\leq$ GPA < 3.5	37.6%	36.9%	37.4%	38.5%	37.4%	37.6%	37.1%
2.5 $\leq$ GPA < 3.0	32.4%	31.8%	30.4%	30.6%	30.5%	29.9%	29.3%
2.0 $\leq$ GPA < 2.5	13.8%	14.9%	14.9%	13.2%	13.3%	12.6%	12.5%
GPA < 2.0	3.0%	3.0%	2.9%	2.2%	2.3%	2.6%	3.2%
<b>Undergraduate GPA</b>	<b>2.98</b>	<b>2.98</b>	<b>2.98</b>	<b>3.00</b>	<b>3.02</b>	<b>3.02</b>	<b>3.02</b>

Grade point averages vary by major field of study with the highest average GPAs generally associated with Arts and Humanities majors.



**New  
Students**

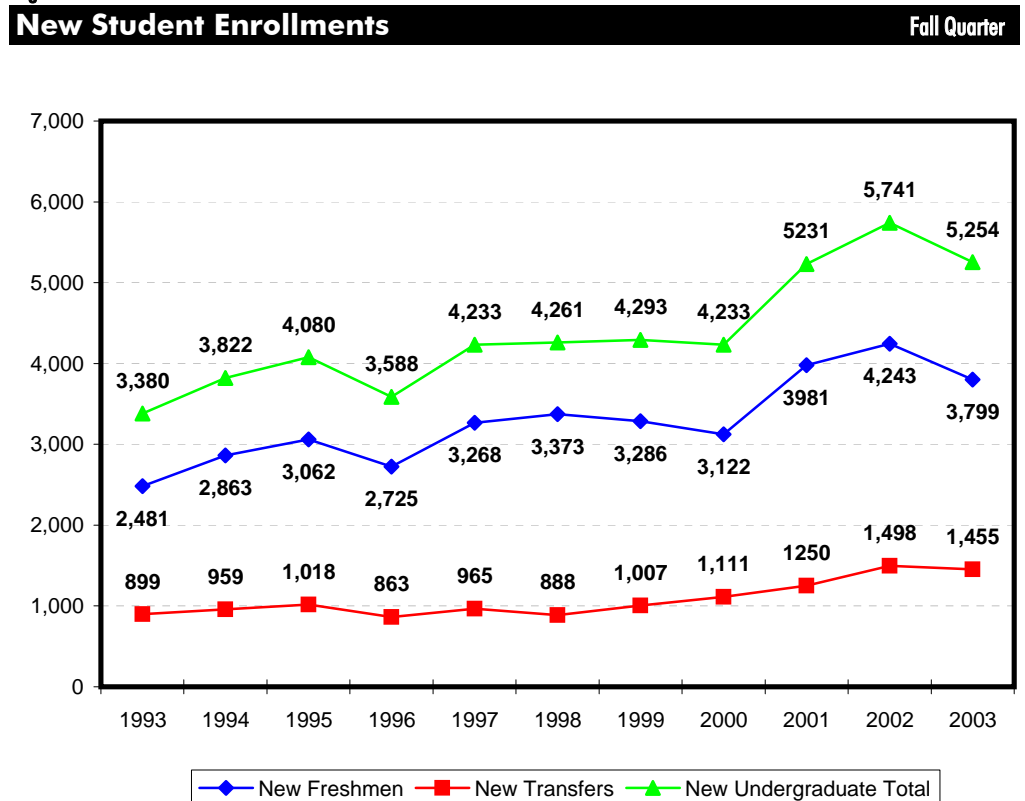
# ■ New Students: The Past Decade

New student enrollments have increased from 3,380 in 1993 to 5,254 in 2003, representing an overall increase of 55%. Of the new student enrollment, just under three-quarters (72%) are first-time freshmen.

Table 11.

New Student Enrollments								Fall Quarter
New Students	1993	1998	1999	2000	2001	2002	2003	10 Year Δ
• First-Time Freshmen	2,481 73%	3,373 79%	3,286 77%	3,122 74%	3,981 76%	4,243 74%	3,799 72%	+ 53%
• New Transfers	899 27%	888 21%	1,007 23%	1,111 26%	1,250 24%	1,498 26%	1,455 28%	+ 62%
<b>New Student Total</b>	<b>3,380</b>	<b>4,261</b>	<b>4,293</b>	<b>4,233</b>	<b>5,231</b>	<b>5,741</b>	<b>5,254</b>	<b>+55%</b>

Figure 9.





**First-Time  
Freshmen**

# ■ First-Time Freshmen

Over forty-three thousand high school students applied for admission to UCSD for Fall of 2003. Of these students, 41% were admitted to UCSD. A total of 3,799 (22%) of the admitted students registered for enrollment.

Table 12.

## Applicants, Admits & Registered Fall Quarter

First-Time Freshmen	1993	1998	1999	2000	2001	2002	2003	10 Year Δ
• Applicants	19,433	28,091	32,547	35,691	38,187	41,354	43,438	+124%
• Admits	11,469	13,586	13,251	13,718	16,493	17,092	17,618	+54%
Admit/App. Rate	59%	48%	41%	38%	43%	41%	41%	
• Registered	2,481	3,373	3,286	3,122	3,981	4,243	3,799	+53%
Reg./Admit Rate	22%	25%	25%	23%	24%	25%	22%	

Figure 10.

## Applicants, Admits & Registered Fall Quarter

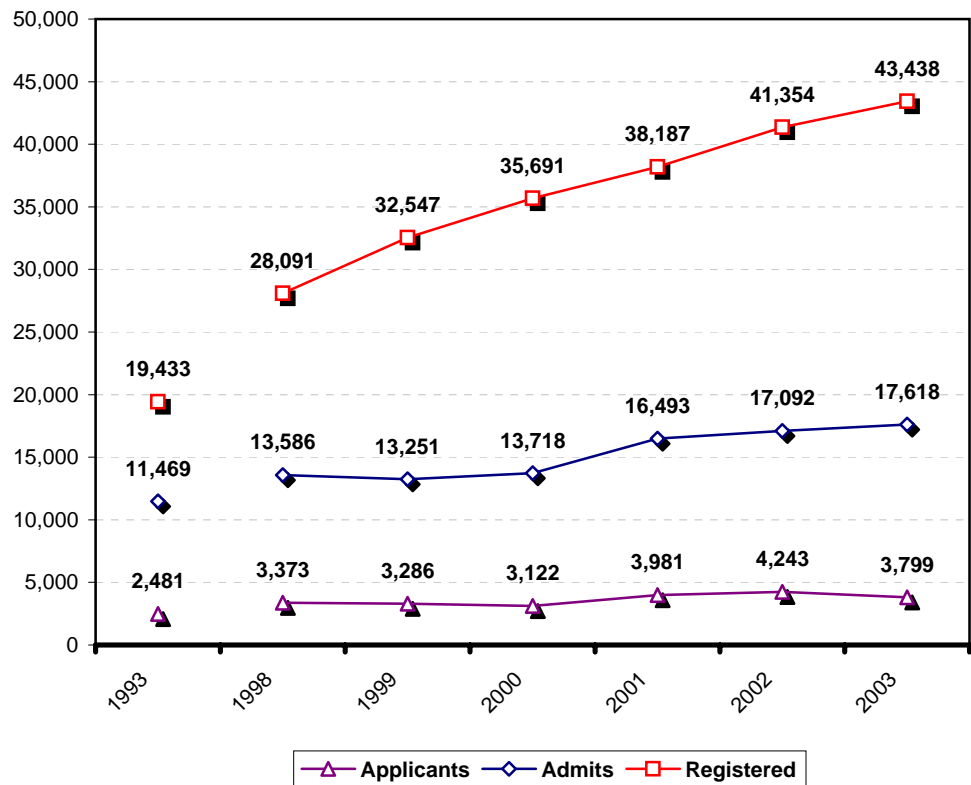


Table 13.

**First-Time Freshmen by Gender** Fall Quarter

Gender	1993	1998	1999	2000	2001	2002	2003	10 Year Δ
• Male	1,219 49%	1,496 44%	1,493 45%	1,440 46%	1,829 46%	1,903 45%	1,669 44%	+37%
• Female	1,262 51%	1,877 56%	1,793 55%	1,682 54%	2,152 54%	2,340 55%	2,130 56%	+69%
<b>Total</b>	<b>2,481</b>	<b>3,373</b>	<b>3,286</b>	<b>3,122</b>	<b>3,981</b>	<b>4,243</b>	<b>3,799</b>	<b>+53%</b>

With over 2,100 (56%) new female freshmen, women continue to represent the larger group of first-time freshmen at UCSD.

Figure 11.

**First-Time Freshmen by Gender** Fall Quarter

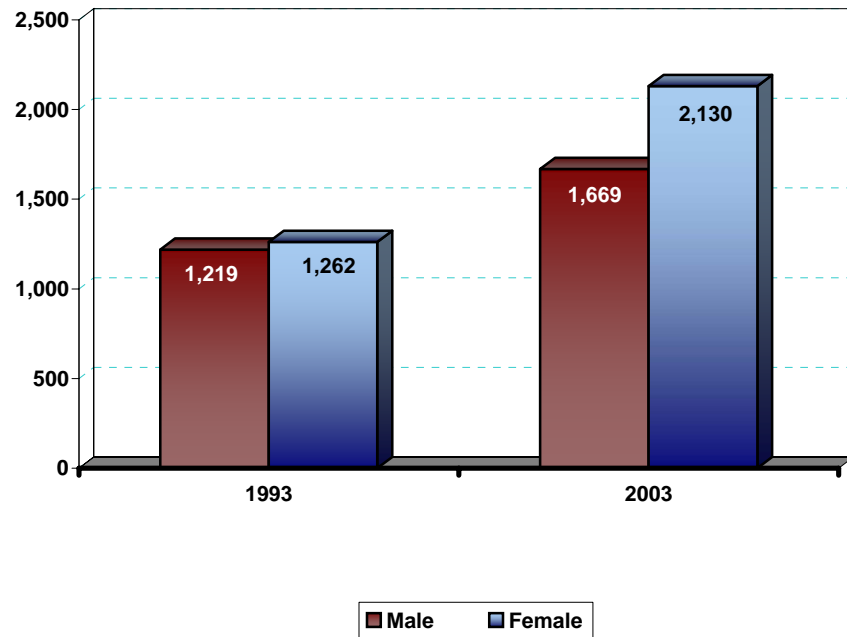


Table 14.

**First-Time Freshmen by Ethnicity** Fall Quarter

Ethnicity	1993	1998	1999	2000	2001	2002	2003	10 Year Δ
• African-American	59 2%	52 2%	33 1%	28 1%	33 1%	48 1%	47 1%	-20%
• Mexican-American	245 10%	202 6%	227 7%	243 8%	254 6%	358 8%	322 8%	+31%
• Native-American	9 0%	19 1%	12 0%	13 0%	9 0%	20 0%	14 0%	+56%
• Asian	658 27%	963 29%	1,101 34%	986 32%	1,452 36%	1,502 35%	1,355 36%	+106%
• Caucasian	1,086 44%	1,253 37%	1,328 40%	1,210 39%	1,472 37%	1,508 36%	1,315 35%	+21%
• Filipino	129 5%	181 5%	140 4%	161 5%	202 5%	199 5%	183 5%	+42%
• Latino	48 2%	74 2%	60 2%	67 2%	68 2%	98 2%	97 3%	+102%
• Other/Missing	247 10%	629 19%	385 12%	414 13%	491 12%	510 12%	466 12%	+89%
<b>Total</b>	<b>2,481</b>	<b>3,373</b>	<b>3,286</b>	<b>3,122</b>	<b>3,981</b>	<b>4,243</b>	<b>3,799</b>	<b>+53%</b>

Since 1993, the proportion of African-American, Mexican-American and Caucasian students has decreased. At the same time, the proportion of Asian, Latino and "Other" students has increased.

Figure 12.

**First-Time Freshmen by Ethnicity** Fall Quarter

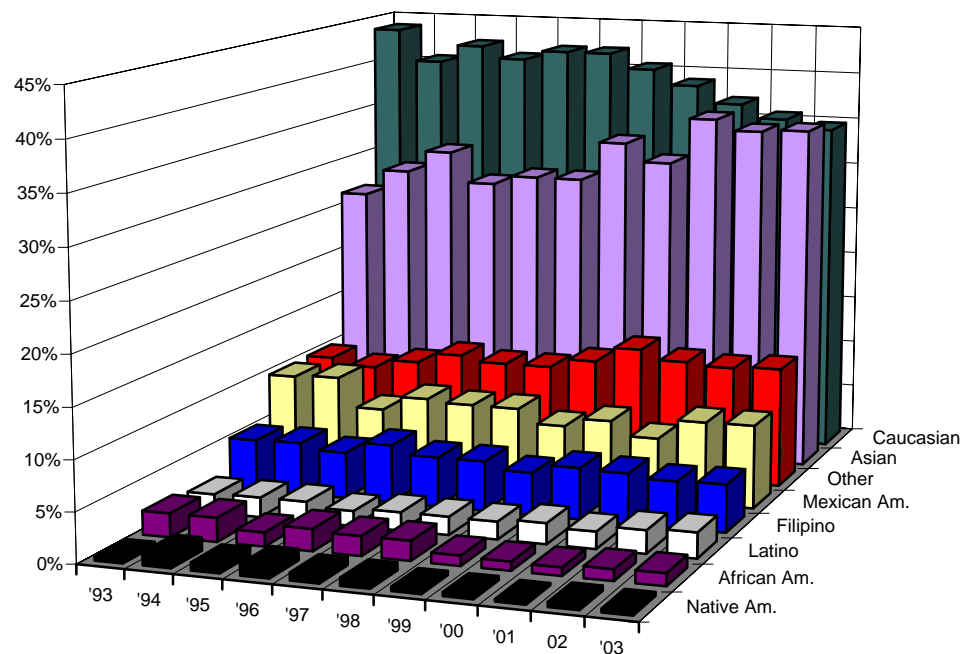


Table 15.

**First-Time Freshmen by Major Field of Study** Fall Quarter

Major Field of Study	1993	1998	1999	2000	2001	2002	2003	10 Year Δ
• Arts	37 1%	85 3%	65 2%	86 3%	115 3%	143 3%	92 2%	+149%
• Engineering	522 21%	595 18%	660 20%	713 23%	1,035 26%	900 21%	738 19%	+41%
• Humanities	77 3%	100 3%	90 3%	76 2%	102 3%	112 3%	98 3%	+27%
• Science/Math	686 28%	861 26%	840 26%	752 24%	847 21%	932 22%	856 23%	+25%
• Social Science	365 15%	640 19%	630 19%	564 18%	697 18%	713 17%	619 16%	+70%
• Undeclared/Missing/ Special	794 32%	1,092 32%	1,001 30%	931 30%	1,185 30%	1,443 34%	1,396 37%	+76%
<b>Total</b>	<b>2,481</b>	<b>3,373</b>	<b>3,286</b>	<b>3,122</b>	<b>3,981</b>	<b>4,243</b>	<b>3,799</b>	<b>+53%</b>

The most popular declared field of study in 2003 was Science/Math, followed by Engineering. Approximately, thirty-seven percent of all new freshmen had not declared a major at the time of admission.

Figure 13.

**First-Time Freshmen by Major Field of Study** Fall Quarter

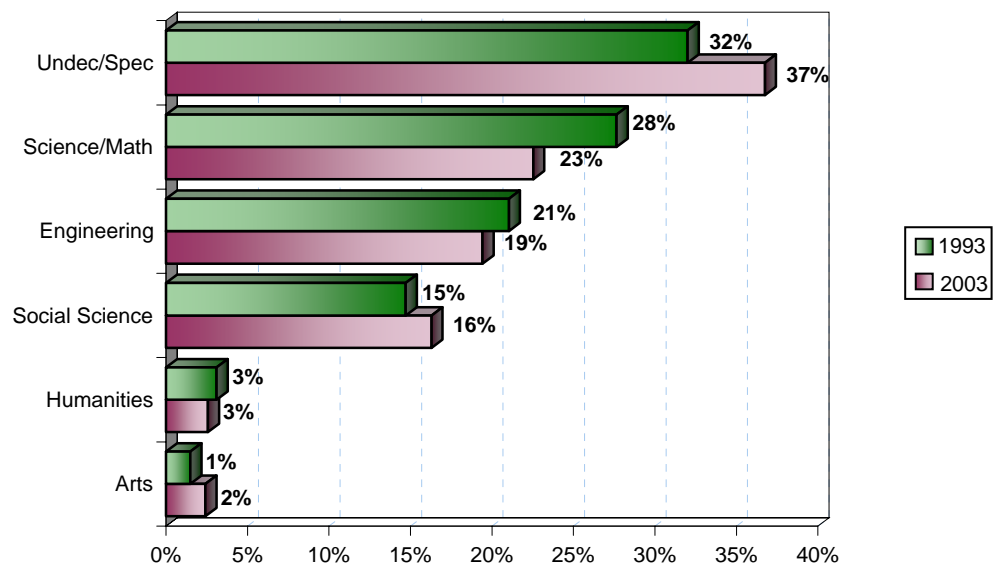




Table 16.

**First-Time Freshmen  
by Major Department at Time of Admission** **Fall Quarter**

1993			2003		
Major Department	n	%	Major Department	n	%
Biology	482	19.4%	Biology	566	14.9%
Applied Mechanics & Eng. (AMES)	396	16.0%	Bioengineering	251	6.6%
Psychology	101	4.1%	Psychology	192	5.1%
Political Science	86	3.5%	Chemistry	183	4.8%
Physics	80	3.2%	Economics	157	4.1%
Computer Science & Eng. (CSE)	76	3.1%	Computer Science & Eng. (CSE)	155	4.1%
Chemistry	74	3.0%	Mechanical & Aerospace Eng.	154	4.1%
Economics	69	2.8%	Electrical & Computer Eng. (ECE)	106	2.8%
Electrical & Computer Eng. (ECE)	56	2.3%	Political Science	99	2.6%
Communications	53	2.1%	Mathematics	81	2.1%
Literature	45	1.8%	Communications	78	2.1%
Mathematics	27	1.1%	Visual Arts	52	1.4%
History	24	1.0%	Structural Engineering	52	1.4%
Sociology	21	0.8%	Literature	51	1.3%
Visual Arts	19	0.8%	History	37	1.0%
Earth Sciences	12	0.5%	Theatre	25	0.7%
Theatre	9	0.4%	Sociology	20	0.5%
Music	8	0.3%	Chemical Engineering	20	0.5%
Linguistics	7	0.3%	Physics	17	0.4%
Philosophy	7	0.3%	Anthropology	15	0.4%
Anthropology	5	0.2%	Music	15	0.4%
Third World Studies	5	0.2%	International Studies	15	0.4%
Urban Studies & Planning	4	0.2%	Cognitive Science	14	0.4%
<b>Subtotal</b>	<b>1,666</b>	<b>64.0%</b>	<b>Subtotal</b>	<b>2,355</b>	<b>62.0%</b>
<b>Other Majors</b>	<b>14</b>	<b>0.6%</b>	<b>Other Majors</b>	<b>48</b>	<b>1.3%</b>
<b>Undeclared Majors</b>	<b>801</b>	<b>32.3%</b>	<b>Undeclared Majors</b>	<b>1,396</b>	<b>36.7%</b>
<b>TOTAL</b>	<b>2,481</b>	<b>100.0%</b>	<b>TOTAL</b>	<b>3,799</b>	<b>100.0%</b>

Similar to 1993, Biology was the most popular declared major among new freshmen in 2003; approximately 15% of all new freshmen report majoring in Biology.

Table 17.

<b>First-Time Freshmen by College</b>								<b>Fall Quarter</b>
<b>College</b>	<b>1993</b>	<b>1998</b>	<b>1999</b>	<b>2000</b>	<b>2001</b>	<b>2002</b>	<b>2003</b>	<b>10 Year Δ</b>
• Revelle	527 21%	703 21%	795 24%	717 23%	848 21%	839 20%	695 18%	+32%
• John Muir	508 20%	734 22%	657 20%	586 19%	811 20%	763 18%	655 17%	+29%
• Thurgood Marshall	514 21%	627 19%	684 21%	598 19%	803 20%	748 18%	724 19%	+41%
• Earl Warren	561 23%	699 21%	570 17%	652 21%	776 19%	809 19%	625 16%	+11%
• Eleanor Roosevelt	371 15%	610 18%	580 18%	569 18%	743 19%	804 19%	706 19%	+90%
• Sixth	NA NA	NA NA	NA NA	NA NA	NA NA	280 7%	394 10%	NA
<b>Total</b>	<b>2,481</b>	<b>3,373</b>	<b>3,286</b>	<b>3,122</b>	<b>3,981</b>	<b>4,243</b>	<b>3,799</b>	<b>+53%</b>

The largest number of first-time freshmen come to UCSD from the Los Angeles area, followed by the San Francisco region.

Table 18.

<b>First-Time Freshmen by Home Location</b>								<b>Fall Quarter</b>
<b>Home Location</b>	<b>1993</b>	<b>1998</b>	<b>1999</b>	<b>2000</b>	<b>2001</b>	<b>2002</b>	<b>2003</b>	<b>10 Year Δ</b>
• San Diego	617 25%	802 24%	594 18%	538 17%	699 18%	754 18%	630 17%	+2%
• Los Angeles	1,064 43%	1,315 39%	1,398 42%	1,416 45%	1,641 41%	1,852 44%	1,694 45%	+59%
• San Francisco	444 18%	625 19%	650 20%	587 19%	879 22%	923 22%	785 21%	+77%
• Other CA	260 10%	464 14%	492 15%	445 14%	543 14%	577 14%	508 13%	+95%
• Out-of-State	76 3%	148 4%	125 4%	97 3%	131 3%	66 2%	149 4%	+96%
• Foreign	20 1%	19 1%	27 1%	39 1%	88 2%	71 2%	33 1%	+65%
<b>Total</b>	<b>2,481</b>	<b>3,373</b>	<b>3,286</b>	<b>3,122</b>	<b>3,981</b>	<b>4,243</b>	<b>3,799</b>	<b>+53%</b>

Table 19.

**First-Time Freshmen by 1st Generation College Status** Fall Quarter

College Status	1993	1998	1999	2000	2001	2002	2003	10 Year Δ
• First Generation	487 20%	623 18%	773 24%	739 24%	858 22%	876 21%	1,072 28%	+120%
• Not First Generation	1,994 80%	2,750 82%	2,513 76%	2,383 76%	3,123 78%	3,367 79%	2,727 72%	+37%
<b>Total</b>	<b>2,481</b>	<b>3,373</b>	<b>3,286</b>	<b>3,122</b>	<b>3,981</b>	<b>4,243</b>	<b>3,799</b>	<b>+53%</b>

The vast majority of new freshmen have at least one parent who has graduated from a two-year junior college or four-year college/university.

Table 20.

**First-Time Freshmen by Income Group** Fall Quarter

Income	1993	1998*	1999*	2000	2001	2002	2003	10 Year Δ
• High (≥\$98,401)	NA NA	962 29%	1,007 31%	704 23%	1,114 28%	1,054 25%	938 25%	NA
• Medium High (\$65,601 - \$98,400)	NA NA	583 17%	518 16%	429 14%	584 15%	560 13%	479 13%	NA
• Medium Low (\$32,801 - \$65,600)	NA NA	610 18%	597 18%	698 22%	842 21%	891 21%	810 21%	NA
• Low (≤\$32,800)	NA NA	560 17%	601 18%	629 20%	659 17%	932 22%	825 22%	NA
• Missing	NA NA	658 20%	563 17%	662 21%	782 20%	806 19%	747 20%	NA
<b>Total</b>	<b>NA</b>	<b>3,373</b>	<b>3,286</b>	<b>3,122</b>	<b>3,981</b>	<b>4,243</b>	<b>3,799</b>	<b>NA</b>

\* 1997-1999 Income Categories:  
 High = Income ≥ \$87,001  
 Medium High = \$58,001-\$87,000  
 Medium Low = \$29,001-\$58,000  
 Low = Income ≤ \$29,000


Table 21.

**Major\* Feeder High Schools for First-time Freshmen** Fall Quarter

High School	City	Number from H.S. Registered at UCSD in Fall 2003	Percent of UCSD's Total Freshman Enrollment	Average H.S. GPA of Registered Freshmen	Average SAT I of Registered Freshmen	Average SAT II of Registered Freshmen	High School Quintile Rank
Arcadia High School	Arcadia	43	1.1%	3.87	1306	1341	First
Lynbrook High School	San Jose	34	0.9%	3.97	1398	1416	First
Mission San Jose High School	Fremont	33	0.9%	3.87	1337	1395	First
Diamond Bar High School	Diamond Bar	30	0.8%	3.99	1277	1281	First
Monta Vista High School	Cupertino	30	0.8%	3.80	1367	1433	First
Walnut High School	Walnut	27	0.7%	3.94	1302	1368	First
University High School	Irvine	26	0.7%	3.81	1372	1419	First
Monte Vista High School	Danville	24	0.6%	3.93	1286	1274	First
Lowell High School	San Francisco	24	0.6%	3.79	1325	1377	First
Henry M. Gunn Senior High School	Palo Alto	24	0.6%	3.88	1329	1384	First
John F. Kennedy High School	La Palma	23	0.6%	3.90	1283	1333	Second
Palos Verdes Penn. High School	Rolling Hills	23	0.6%	3.84	1360	1411	First
Torrey Pines High School	San Diego	23	0.6%	3.85	1302	1338	First
Mar Vista High School	Imperial Beach	22	0.6%	3.97	979	1021	Fifth
Cerritos High School	Cerritos	21	0.6%	3.82	1324	1336	First
Sunny Hills High School	Fullerton	21	0.6%	3.69	1380	1387	First
San Marcos High School	San Marcos	20	0.5%	4.07	1266	1265	Third
Los Altos High School	Hacienda Heights	20	0.5%	3.79	1283	1299	First
Canyon High School	Canyon Country	20	0.5%	4.05	1266	1305	Third
Mount Carmel High School	San Diego	20	0.5%	4.08	1269	1318	First
San Gabriel High School	San Gabriel	19	0.5%	3.82	1173	1206	Fifth
Agoura High School	Agoura Hills	19	0.5%	3.96	1309	1348	First
Leland High School	San Jose	19	0.5%	4.08	1295	1393	First
Independence High School	San Jose	18	0.5%	3.98	1149	1187	Third
Troy High School	Fullerton	18	0.5%	3.71	1383	1414	First
Villa Park High School	Villa Park	18	0.5%	4.03	1316	1313	First
Irvine High School	Irvine	18	0.5%	3.95	1326	1325	First
Archbishop Mitty High School	San Jose	18	0.5%	4.01	1342	1382	NA
Mira Mesa High School	San Diego	18	0.5%	4.13	1209	1195	Second
Montgomery High School	San Diego	17	0.4%	4.09	1138	1140	Fourth
Sweetwater Union High School	National City	17	0.4%	4.00	1022	1019	Fourth
Homestead High School	Cupertino	17	0.4%	3.91	1320	1361	First
Saint Ignatius College	San Francisco	17	0.4%	3.98	1285	1272	First
John A. Rowland High School	Rowland Heights	17	0.4%	3.87	1259	1312	Second
<b>Subtotal (Number of High Schools=34)</b>		<b>758</b>	<b>20.0%</b>				
<b>Other High Schools (Number of High Schools=844)</b>		<b>3,041</b>	<b>80.0%</b>				
<b>Total (Number of High Schools=878)</b>		<b>3,799</b>	<b>100.0%</b>				

\* Seventeen or more students

Arcadia High School in the Los Angeles area and Lynbrook High School in the San Jose area top the list of major feeder schools for the Fall 2003 freshman cohort.



**High School  
Grades and  
SAT Scores**

# ■ Academic Preparation: A Decade of Change

Compared to the 2002 freshman cohort, the 2003 cohort showed an increase with regard to average SAT scores. Thirty-four percent of new freshmen took five or more honors classes in high school.

Table 22.

## Freshman Cohort by HS GPA and SAT Score Averages Fall Quarter

First-Time Freshmen	1993	1998	1999	2000	2001	2002	2003 <sup>2</sup>
• HS GPA <sup>1</sup>	3.83	3.89	3.98	3.99	3.95	3.94	3.96
• SAT I (Verbal & Math)	1131	1241	1256	1259	1264	1239	1257
• SAT II (English & Math)	1123	1198	1241	1255	1262	1252	1258

<sup>1</sup> GPAs may exceed 4.0 with credit given for honors courses.

<sup>2</sup> SAT I scores reflect the higher of ACT scores converted to SAT Scores.

Table 23.

## Freshman Cohort by Academic Indicator Ranges Fall Quarter

High School GPA Range	Percentage in Range		SAT I Composite Score Range	Percentage in Range	
	1993	2003		1993	2003
• 4.0 - High	37%	51%	• 1500 - 1600	< 1%	3%
• 3.90 - 3.99	10%	12%	• 1300 - 1499	13%	38%
• 3.60 - 3.89	31%	28%	• 1200 - 1299	20%	30%
• 3.30 - 3.59	15%	8%	• 1000 - 1199	49%	23%
• Low - 3.29	7%	1%	• Low - 999	17%	5%
<b>Total</b>	<b>100%</b>	<b>100%</b>	<b>Total</b>	<b>100%</b>	<b>100%</b>

Number of Honors Courses: 10th & 11th Grade	Percentage in Range		Number of College Preparatory (A-G) Courses*	Percentage in Range	
	1993	2003		1993	2003
• More than 8	NA	7%	• More than 50	8%	21%
• 7 - 8	NA	9%	• 46 - 50	20%	31%
• 5 - 6	NA	18%	• 41 - 45	36%	36%
• 1 - 4	NA	49%	• 36 - 40	32%	12%
• 0	NA	17%	• 30 - 35	5%	1%
<b>Total</b>	<b>100%</b>	<b>100%</b>	<b>Total</b>	<b>100%</b>	<b>100%</b>

\* The G requirement went into effect in 2003.

Figure 14.

## Academic Preparation: 1993-2003 Comparison Fall Quarter

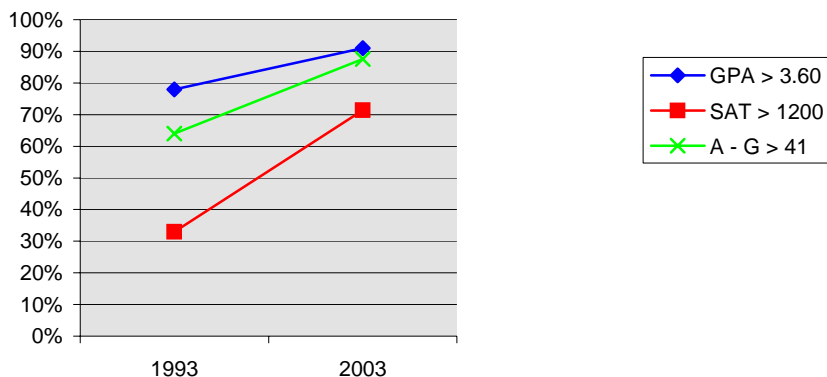


Table 24.

**High School GPA<sup>1</sup> by Gender, Ethnicity, Major Field of Study, Home Location, 1st Generation College Status & Income** Fall Quarter

First-Time Freshmen GPA	1993 Average	1998 <sup>2</sup> Average	1999 <sup>2</sup> Average	2000 Average	2001 Average	2002 Average	2003 Average
• Gender							
Male	3.80	3.86	3.94	3.97	3.93	3.91	3.93
Female	3.86	3.90	4.00	4.00	3.97	3.95	3.97
• Ethnicity							
African-American	3.50	3.81	3.93	4.01	3.94	3.76	3.90
Mexican-American	3.53	3.89	3.96	3.98	3.95	3.87	3.88
Native-American	3.47	3.92	3.95	3.96	3.93	4.02	4.12
Asian	3.85	3.84	3.94	3.92	3.91	3.89	3.91
Caucasian	3.89	3.91	4.01	4.03	4.00	3.99	4.01
Filipino	3.92	3.93	4.07	4.08	3.97	4.02	4.06
Latino	3.86	3.94	3.94	4.04	3.94	3.87	3.94
• Major Field of Study							
Arts	3.66	3.78	3.96	3.94	3.93	3.90	3.93
Engineering	3.88	3.93	4.00	4.03	3.99	3.99	4.02
Humanities	3.73	3.78	3.91	3.96	3.89	3.89	3.93
Science/Math	3.90	3.94	4.03	4.02	3.99	3.99	3.99
Social Science	3.75	3.82	3.92	3.93	3.91	3.87	3.90
Undec./Special	3.80	3.88	3.96	3.97	3.93	3.91	3.93
• Home Location							
San Diego	3.85	3.95	4.05	4.04	3.99	3.97	3.99
Los Angeles	3.82	3.84	3.93	3.95	3.92	3.91	3.92
San Francisco	3.79	3.83	3.94	3.95	3.92	3.91	3.95
Other CA	3.90	3.96	4.01	4.06	4.02	4.01	4.03
Out of State	3.90	3.97	4.11	4.10	4.10	4.07	4.04
• First Generation College Status							
First Generation	3.79	3.87	3.96	3.95	3.93	3.88	3.90
Not First Generation	3.84	3.89	3.98	4.00	3.96	3.95	3.98
• Income Group							
High (≥\$98,401)	NA	3.88	3.98	4.01	3.97	3.97	4.01
Med. High (\$65,601-\$98,400)	NA	3.91	3.98	4.02	4.00	3.99	4.00
Med. Low (\$32,801-\$65,600)	NA	3.89	3.99	3.98	3.92	3.91	3.94
Low (≤\$32,800)	NA	3.85	3.93	3.94	3.90	3.86	3.86
Missing	NA	3.89	3.96	3.99	3.96	3.97	3.99
<b>Total</b>	<b>3.83</b>	<b>3.89</b>	<b>3.98</b>	<b>3.99</b>	<b>3.95</b>	<b>3.94</b>	<b>3.96</b>

Average high school GPAs vary somewhat by gender, ethnicity, and major field of study. For example, the average GPA of females is typically higher than that of males.

<sup>1</sup> GPAs may exceed 4.0 with credit given for honors courses.

<sup>2</sup> 1998-1999 Income Categories: High = Income ≥ \$87,001 Medium Low = \$29,001-\$58,000  
 Medium High = \$58,001-\$87,000 Low = Income ≤ \$29,000

Table 25.

**SAT<sup>1</sup> I Scores by Gender, Ethnicity, Major Field of Study, Home Location, 1st Generation College Status & Income** Fall Quarter

First-Time Freshmen SAT I	1993 Average	1998 <sup>2</sup> Average	1999 <sup>2</sup> Average	2000 Average	2001 Average	2002 Average	2003 Average
• Gender							
Male	1168	1272	1290	1289	1293	1274	1293
Female	1095	1218	1228	1233	1239	1211	1228
• Ethnicity							
African-American	991	1162	1207	1165	1155	1107	1119
Mexican-American	1013	1149	1140	1129	1142	1092	1104
Native-American	1166	1277	1260	1240	1273	1255	1264
Asian	1122	1239	1252	1267	1273	1253	1266
Caucasian	1170	1263	1282	1284	1282	1270	1290
Filipino	1068	1178	1193	1192	1209	1162	1208
Latino	1088	1189	1162	1204	1201	1144	1197
• Major Field of Study							
Arts	1089	1232	1273	1245	1246	1207	1239
Engineering	1158	1282	1290	1290	1297	1276	1295
Humanities	1164	1261	1268	1257	1276	1239	1257
Science/Math	1129	1231	1245	1247	1259	1228	1249
Social Science	1107	1217	1231	1235	1240	1220	1239
Undec./Special	1124	1241	1257	1260	1253	1236	1249
• Home Location							
San Diego	1079	1190	1195	1202	1208	1170	1197
Los Angeles	1132	1249	1257	1259	1266	1240	1250
San Francisco	1193	1281	1296	1296	1301	1288	1306
Other CA	1120	1233	1250	1262	1250	1237	1257
Out of State	1208	1297	1330	1318	1337	1325	1328
• First Generation College Status							
First Generation	1037	1174	1169	1174	1184	1174	1168
Not First Generation	1154	1257	1284	1285	1285	1256	1292
• Income Group							
High (≥\$98,401)	NA	1269	1294	1309	1303	1288	1311
Med. High (\$65,601-\$98,400)	NA	1242	1268	1272	1267	1260	1272
Med. Low (\$32,801-\$65,600)	NA	1226	1242	1247	1236	1217	1233
Low (≤\$32,800)	NA	1172	1161	1166	1195	1150	1166
Missing	NA	1277	1297	1298	1291	1288	1304
<b>Total</b>	<b>1131</b>	<b>1241</b>	<b>1256</b>	<b>1259</b>	<b>1264</b>	<b>1239</b>	<b>1257</b>

The average SAT composite score of males is typically higher than that of females. Average SAT scores, in general, were slightly higher in 2003 than in the preceding year.

<sup>1</sup> SAT scores were "recentered" starting with the 1996 freshman cohort.

<sup>2</sup> 1998-1999 Income Categories: High = Income ≥ \$87,001 Medium Low = \$29,001-\$58,000  
 Medium High = \$58,001-\$87,000 Low = Income ≤ \$29,000



Table 26.

**SAT<sup>1</sup> II Scores by Gender, Ethnicity, Major Field of Study, Home Location, 1st Generation College Status & Income** Fall Quarter

First-Time Freshmen SAT II	1993 Average	1998 <sup>2</sup> Average	1999 <sup>2</sup> Average	2000 Average	2001 Average	2002 Average	2003 Average
• Gender							
Male	1143	1218	1263	1280	1285	1278	1291
Female	1105	1182	1222	1234	1242	1231	1232
• Ethnicity							
African-American	997	1107	1170	1164	1149	1099	1102
Mexican-American	994	1105	1112	1124	1131	1099	1089
Native-American	1158	1221	1212	1216	1283	1244	1252
Asian	1117	1194	1240	1261	1279	1269	1277
Caucasian	1161	1221	1267	1282	1277	1284	1283
Filipino	1065	1137	1172	1181	1193	1160	1199
Latino	1095	1144	1142	1192	1189	1147	1192
Other	1164	1219	1279	1284	1279	1286	1298
• Major Field of Study							
Arts	1092	1173	1233	1247	1257	1214	1234
Engineering	1152	1237	1274	1288	1299	1284	1295
Humanities	1134	1208	1263	1246	1263	1257	1240
Science/Math	1124	1192	1232	1242	1255	1243	1256
Social Science	1101	1175	1213	1232	1235	1234	1233
Undec./Special	1115	1195	1242	1255	1250	1251	1253
• Home Location							
San Diego	1076	1142	1164	1191	1199	1182	1189
Los Angeles	1122	1203	1245	1252	1263	1249	1255
San Francisco	1177	1242	1288	1300	1316	1313	1321
Other CA	1117	1188	1229	1261	1240	1244	1238
Out of State	1203	1207	1311	1323	1325	1327	1305
• First Generation College Status							
First Generation	1041	1127	1148	1166	1178	1176	1165
Not First Generation	1144	1214	1270	1282	1285	1272	1294
• Income Group							
High (≥\$98,401)	NA	1230	1282	1310	1307	1307	1317
Med. High (\$65,601-\$98,400)	NA	1201	1249	1271	1267	1268	1267
Med. Low (\$32,801-\$65,600)	NA	1176	1224	1238	1226	1226	1229
Low (≤\$32,800)	NA	1127	1142	1161	1193	1161	1170
Missing	NA	1230	1288	1293	1291	1305	1304
<b>Total</b>	<b>NA</b>	<b>1198</b>	<b>1241</b>	<b>1255</b>	<b>1262</b>	<b>1252</b>	<b>1258</b>

Given the high correlation between the SAT and SAT II, average SAT II scores typically show the same pattern of variation by student characteristics as the SAT.

<sup>1</sup> SAT scores were "recentered" starting with the 1996 freshman cohort.

<sup>2</sup> 1998-1999 Income Categories: High = Income ≥ \$87,001 Medium Low = \$29,001-\$58,000  
 Medium High = \$58,001-\$87,000 Low = Income ≤ \$29,000

Table 27.

**Intercampus Comparison<sup>1</sup> of Average SAT I Composite Scores** Fall Quarter

UC Campus	1993	1994	1995	1996 <sup>2</sup>	1997	1998	1999	2000	2001	2002 <sup>3</sup>	2003 <sup>3</sup>
• Berkeley	1219	1226	1218	1296	1311	1330	1305	1308	1293	1303	NA
• Davis	1070	1060	1070	1162	1162	1149	1165	1170	1163	1180	1184
• Irvine	1028	1011	1015	1121	1117	1126	1155	1171	1167	1179	1176
• Los Angeles	1136	1122	1136	1228	1239	1263	1262	1266	1256	1264	1278
• Riverside	956	948	975	1046	1062	1061	1057	1056	1068	1057	1064
• <b>San Diego</b>	<b>1130</b>	<b>1104</b>	<b>1136</b>	<b>1221</b>	<b>1233</b>	<b>1240</b>	<b>1250</b>	<b>1259</b>	<b>1264</b>	<b>1239</b>	<b>1245</b>
• Santa Barbara	1005	997	1020	1116	1143	1158	1176	1181	1183	1172	1187
• Santa Cruz	1057	1034	1036	1134	1137	1135	1150	1143	1150	1138	1143
<b>Systemwide</b>	<b>1086</b>	<b>1079</b>	<b>1088</b>	<b>1180</b>	<b>1188</b>	<b>1196</b>	<b>1198</b>	<b>1199</b>	<b>1197</b>	<b>NA</b>	<b>NA</b>

<sup>1</sup> Source: University of California, Frequency Distribution of College Entrance Examination Board (CEEB) Test Scores For Entering Freshmen CSS 050B.

<sup>2</sup> From 1996, recentered SAT scores are reported.

<sup>3</sup> 2002-2003 data based on personal contact with representatives for each UC Campus and are subject to change.

When compared on the basis of average SAT scores, UCSD ranks among the top three in the UC system.

Table 28.

**UCSD's Position Relative to Other UC Campuses on SAT I Scores** Fall Quarter

Rank	1993	1994	1995	1996	1997	1998	1999	2000	2001	2002	2003
• 1	UCB	UCB	UCB	UCB	UCB	UCB	UCB	UCB	UCB	UCB	UCB
• 2	UCLA	UCLA	UCSD	UCLA	UCLA	UCLA	UCLA	UCLA	UCSD	UCLA	UCLA
• 3	UCSD	UCSD	UCLA	UCSD	UCSD	UCSD	UCSD	UCSD	UCLA	UCSD	UCSD
• 4	UCD	UCD	UCD	UCD	UCD	UCSB	UCSB	UCSB	UCSB	UCD	UCSB
• 5	UCI	UCSC	UCSC	UCSC	UCSB	UCD	UCD	UCI	UCI	UCI	UCD
• 6	UCSC	UCI	UCI	UCI	UCSC	UCSC	UCI	UCD	UCD	UCSB	UCI
• 7	UCSB	UCSB	UCSB	UCSB	UCI	UCI	UCSC	UCSC	UCSC	UCSC	UCSC
• 8	UCR	UCR	UCR	UCR	UCR	UCR	UCR	UCR	UCR	UCR	UCR



**■ New  
Transfer  
Students**

# ■ New Transfer Students

A record number of transfer students applied for admission to UCSD in 2003. This year also marks the second largest entering cohort with 1,455 newly enrolled transfer students, representing a 62% increase over the past decade.

Table 29.

## New Transfers: Applicants, Admits & Registered Fall Quarter

New Transfers	1993	1998	1999	2000	2001	2002	2003	10 Year Δ
• Applicants	4,023	4,654	5,351	6,375	7,041	7,890	8,854	+120%
• Admits	2,433	2,503	2,845	3,613	4,412	4,860	5,058	+108%
Admit/Applicant Rate	60%	54%	53%	57%	63%	62%	57%	
• Registered	899	888	1,007	1,111	1,250	1,498	1,455	+62%
Registered/Admit Rate	37%	35%	35%	31%	28%	31%	29%	

Figure 15.

## New Transfers: Applicants, Admits & Registered Fall Quarter

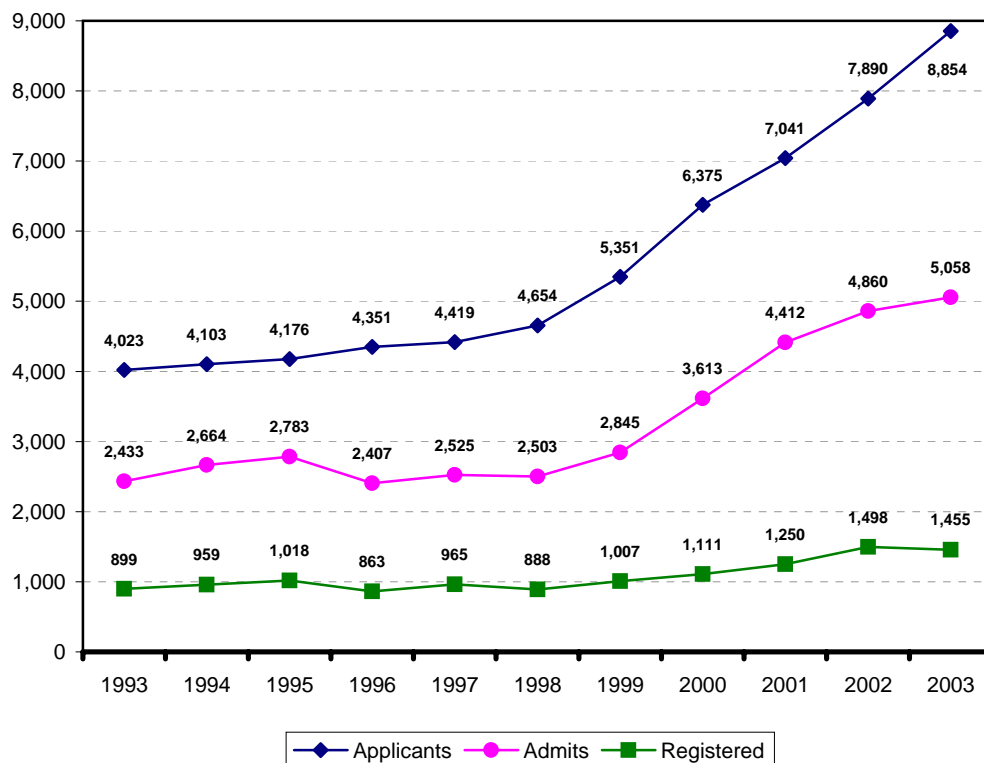


Table 30.

**New Transfers by Gender** Fall Quarter

Gender	1993	1998	1999	2000	2001	2002	2003	10 Year Δ
• Male	472 53%	467 53%	491 49%	556 50%	662 53%	774 52%	779 54%	+65%
• Female	427 47%	421 47%	516 51%	555 50%	588 47%	724 48%	676 46%	+58%
<b>Total</b>	<b>899</b>	<b>888</b>	<b>1,007</b>	<b>1,111</b>	<b>1,250</b>	<b>1,498</b>	<b>1,455</b>	<b>+62%</b>

At 54%, male transfer students outnumber women by eight percent, respectively.

Figure 16.

**New Transfers by Gender** Fall Quarter

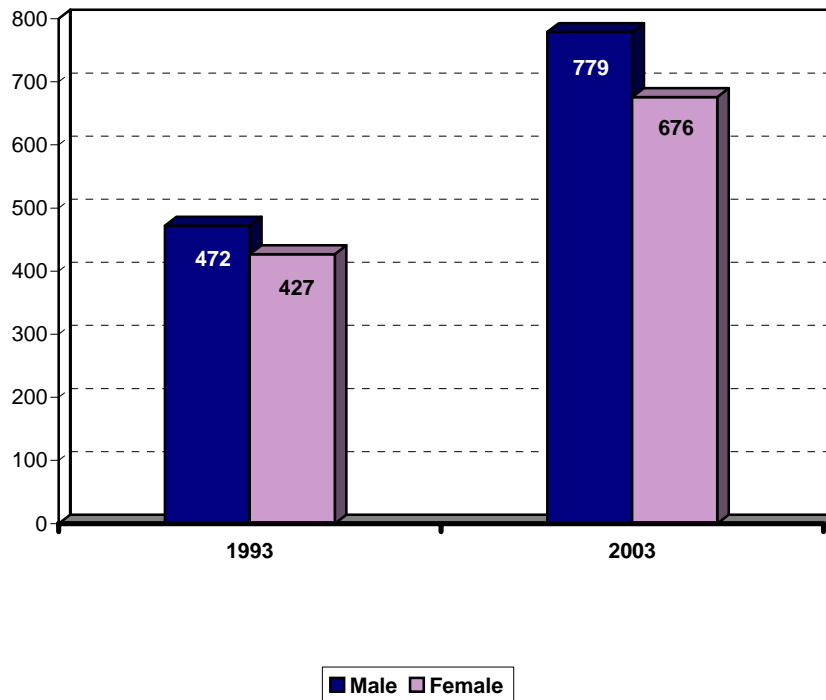


Table 31.

**New Transfers by Ethnicity** **Fall Quarter**

Ethnicity	1993	1998	1999	2000	2001	2002	2003	10 Year Δ
• African-American	17 2%	13 1%	14 1%	18 2%	23 2%	24 2%	22 2%	+29%
• Mexican-American	83 9%	68 8%	86 9%	101 9%	106 8%	121 8%	102 7%	+23%
• Native-American	13 1%	9 1%	5 1%	4 0%	10 1%	8 1%	10 1%	-23%
• Asian	161 18%	197 22%	222 22%	279 25%	330 26%	491 33%	481 33%	+199%
• Caucasian	498 55%	332 37%	454 45%	459 41%	508 41%	538 36%	502 35%	+1%
• Filipino	40 4%	45 5%	33 3%	49 4%	56 4%	54 4%	49 3%	+23%
• Latino	20 2%	25 3%	30 3%	34 3%	38 3%	44 3%	43 3%	+115%
• Other/Undeclared	67 7%	199 22%	163 16%	167 15%	179 14%	218 15%	246 17%	+267%
<b>Total</b>	<b>899</b>	<b>888</b>	<b>1,007</b>	<b>1,111</b>	<b>1,250</b>	<b>1,498</b>	<b>1,455</b>	<b>+62%</b>

Over the past decade the proportion of African-American, Native-American, Filipino and Latino students has remained, relatively, unchanged. At the same time, the proportion of Asian students has more than doubled while the proportion of Mexican-American and Caucasian students has declined.

Table 32.

**New Transfers by Major Field of Study** Fall Quarter

Major Field of Study	1993	1998	1999	2000	2001	2002	2003	10 Year Δ
• Arts	46 5%	40 5%	63 6%	73 7%	101 8%	110 7%	102 7%	+122%
• Engineering	163 18%	207 23%	203 20%	278 25%	273 22%	333 22%	356 24%	+118%
• Humanities	85 9%	67 8%	66 7%	80 7%	73 6%	96 6%	86 6%	+1%
• Science/Math	254 28%	263 30%	264 26%	225 20%	279 22%	303 20%	231 16%	-9%
• Social Science	318 35%	288 32%	394 39%	438 39%	503 40%	607 41%	619 43%	+95%
• Undeclared/ Special	33 4%	23 3%	17 2%	17 2%	21 2%	49 3%	61 4%	+85%
<b>Total</b>	<b>899</b>	<b>888</b>	<b>1,007</b>	<b>1,111</b>	<b>1,250</b>	<b>1,498</b>	<b>1,455</b>	<b>+62%</b>

Social Science was by far the most popular field of study among new transfer students in 2003.

Figure 17.

**New Transfers by Major Field of Study** Fall Quarter

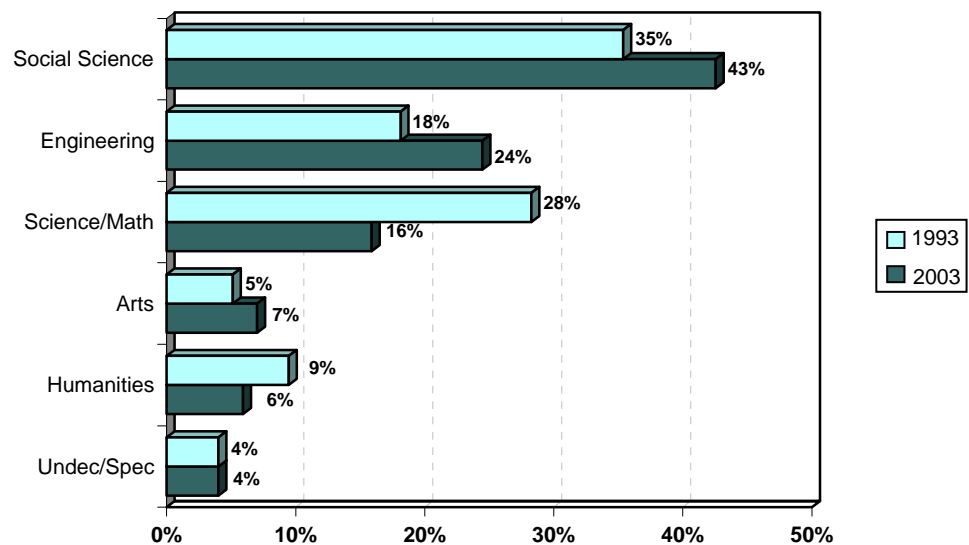


Table 33.

**New Transfers by Transfer Institution** **Fall Quarter**

Transfer Institution	1993	1998	1999	2000	2001	2002	2003	10 Year Δ
• California Community Colleges	801 89%	868 98%	983 98%	1,057 95%	1,164 93%	1,381 92%	1,380 95%	+72%
• Transfer Admission Guarantee (TAG)	219	159	184	171	156	201	175	-20%
• Non-TAG	582	709	799	886	1,008	1,297	1,280	+120%
• Intercampus Transfer/ Other 4 yr. College	85 9%	16 2%	12 1%	48 4%	75 6%	87 6%	69 5%	-19%
• Other/Unknown	13 1%	4 0%	12 1%	6 1%	11 1%	30 2%	6 0%	-54%
<b>Total</b>	<b>899</b>	<b>888</b>	<b>1,007</b>	<b>1,111</b>	<b>1,250</b>	<b>1,498</b>	<b>1,455</b>	<b>+62%</b>

Ninety-five percent of new transfer students attended a California Community College prior to enrolling at UCSD. The largest number of new transfer students come from either Los Angeles or San Diego county. The proportion of transfer students from a foreign country has dramatically increased over the past decade.

Table 34.

**New Transfers by Home Location** **Fall Quarter**

Home Location	1993	1998	1999	2000	2001	2002	2003	10 Year Δ
• San Diego	511 (57%)	325 (37%)	362 (36%)	362 (33%)	374 (30%)	461 (31%)	411 (28%)	-20%
• Los Angeles	205 (23%)	291 (33%)	320 (32%)	354 (32%)	386 (31%)	440 (29%)	426 (29%)	+108%
• San Francisco	91 (10%)	129 (15%)	152 (15%)	182 (16%)	218 (17%)	231 (15%)	271 (19%)	+198%
• Other California	72 (8%)	100 (11%)	118 (12%)	136 (12%)	147 (12%)	161 (11%)	143 (10%)	+99%
• Out-of-State	8 (1%)	2 (0%)	6 (0%)	6 (1%)	6 (0%)	10 (1%)	11 (1%)	+38%
• Foreign	12 (1%)	41 (5%)	49 (5%)	71 (6%)	119 (10%)	195 (13%)	193 (13%)	+1508%
<b>Total</b>	<b>899</b>	<b>888</b>	<b>1,007</b>	<b>1,111</b>	<b>1,250</b>	<b>1,498</b>	<b>1,455</b>	<b>+62%</b>



Table 35.

**New Transfers by Undergraduate College** Fall Quarter

Undergraduate College	1993	1998	1999	2000	2001	2002	2003	10 Year Δ
• Revelle	126 14%	133 15%	142 14%	160 14%	217 17%	264 18%	223 15%	+77%
• John Muir	257 29%	193 22%	239 24%	283 25%	270 22%	314 21%	333 23%	+30%
• Thurgood Marshall	198 22%	223 25%	254 25%	247 22%	277 22%	338 23%	309 21%	+56%
• Earl Warren	230 26%	265 30%	264 26%	281 25%	282 23%	327 22%	369 25%	+60%
• Eleanor Roosevelt	88 10%	74 8%	108 11%	140 13%	204 16%	255 17%	221 15%	+151%
<b>Total</b>	<b>899</b>	<b>888</b>	<b>1,007</b>	<b>1,111</b>	<b>1,250</b>	<b>1,498</b>	<b>1,455</b>	<b>+62%</b>

In 2003, Earl Warren College enrolled the largest number of transfer students, followed closely behind by John Muir and Thurgood Marshall Colleges.

Figure 18.

**New Transfers by Undergraduate College** Fall Quarter

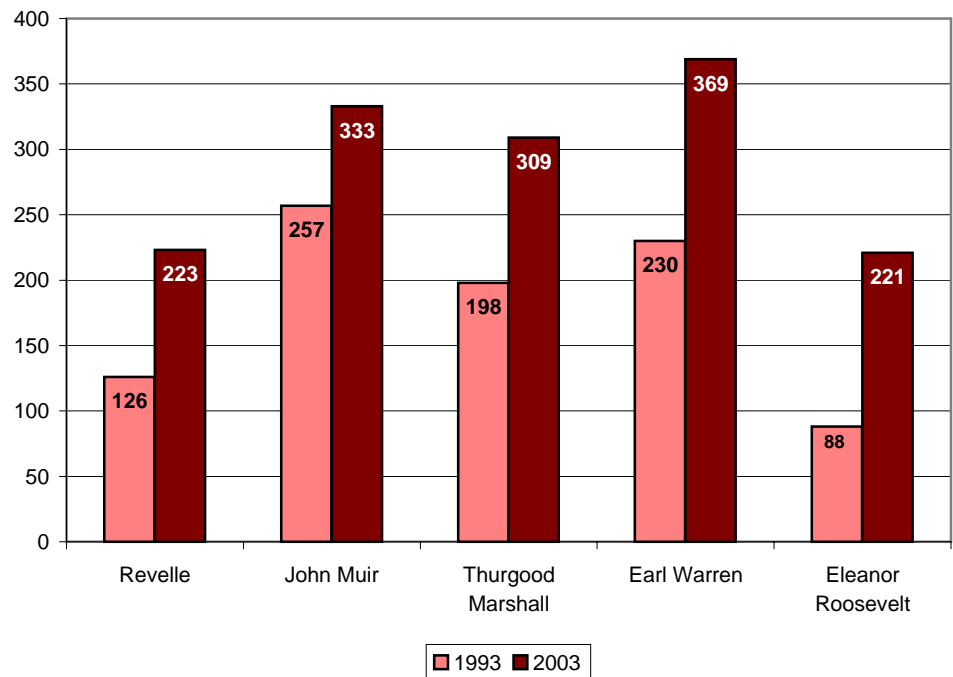


Table 36.

**New Transfers by 1st Generation College Status** Fall Quarter

College Status	1993	1998	1999	2000	2001	2002	2003	10 Year Δ
• First Generation	279 (31%)	286 (32%)	339 (34%)	366 (33%)	388 (31%)	394 (26%)	448 (31%)	+61%
• Not First Generation	620 (69%)	602 (68%)	668 (66%)	745 (67%)	862 (69%)	1,104 (74%)	1,007 (69%)	+62%
<b>Total</b>	<b>899</b>	<b>888</b>	<b>1,007</b>	<b>1,111</b>	<b>1,250</b>	<b>1,498</b>	<b>1,455</b>	<b>+62%</b>

The majority of new transfer students have at least one parent who has graduated from a two-year junior college or four-year college/university.

Table 37.

**New Transfers by Income Group** Fall Quarter

Income	1993	1998*	1999*	2000	2001	2002	2003	10 Year Δ
• High (≥\$98,401)	NA NA	151 17%	153 15%	183 16%	249 20%	270 18%	248 17%	NA
• Medium High (\$65,601 - \$98,400)	NA NA	111 13%	125 12%	139 13%	154 12%	212 14%	170 12%	NA
• Medium Low (\$32,801 - \$65,600)	NA NA	163 18%	221 22%	216 19%	245 20%	294 20%	289 20%	NA
• Low (≤\$32,800)	NA NA	165 19%	221 22%	212 19%	233 19%	259 17%	289 20%	NA
• Missing	NA NA	298 34%	287 29%	361 32%	369 30%	463 31%	459 32%	NA
<b>Total</b>	<b>NA</b>	<b>888</b>	<b>1,007</b>	<b>1,111</b>	<b>1,250</b>	<b>1,498</b>	<b>1,455</b>	<b>NA</b>

\* 1998-1999 Income Categories:  
 High = Income ≥ \$87,001  
 Medium High = \$58,001-\$87,000  
 Medium Low = \$29,001-\$58,000  
 Low = Income ≤ \$29,000

**Table 38.**

**Major\* Feeder Transfer Institutions** **Fall Quarter**

School	City	Enrollment N Fall 2003	% of Total Enrollment
San Diego Mesa College	San Diego	145	10.0%
De Anza College	Cupertino	109	7.5%
Palomar College	San Marcos	78	5.4%
Diablo Valley College	Pleasant Hills	73	5.0%
Mira Costa College	Oceanside	63	4.3%
Grossmont Community College	El Cajon	59	4.1%
Santa Monica College	Santa Monica	58	4.0%
Foothill College	Los Altos Hills	54	3.7%
Pasadena City College	Pasadena	49	3.4%
City College of San Francisco	San Francisco	44	3.0%
Mount San Antonio College	Walnut	41	2.8%
Southwestern College	Chula Vista	39	2.7%
Orange Coast College	Costa Mesa	26	1.8%
San Diego City College	San Diego	24	1.6%
Saddleback Community College South	Mission Viejo	24	1.6%
Santa Barbara City College	Santa Barbara	22	1.5%
Moorpark College	Moorpark	21	1.4%
Irvine Valley College	Irvine	18	1.2%
UC Riverside	Riverside	18	1.2%
College of the Canyons	Valencia	17	1.2%
Los Angeles Pierce College	Woodland Hills	17	1.2%
San Diego-Miramar College	San Diego	17	1.2%
Ventura Community College	Ventura	16	1.1%
East Los Angeles College	Monterey Park	15	1.0%
American River College	Sacramento	14	1.0%
College of Marin	Marin	14	1.0%
Riverside Community College	Riverside	14	1.0%
Sacramento City College	Sacramento	14	1.0%
Sierra College	Rocklin	14	1.0%
West Valley College	Saratoga	14	1.0%
El Camino College	Torrance	13	0.9%
Glendale Community College	Glendale	13	0.9%
College of San Mateo	San Mateo	12	0.8%
College of the Desert	Palm Desert	12	0.8%
Fullerton College	Fullerton	11	0.8%
Cuyamaca College	El Cajon	10	0.7%
Fresno City College	Fresno	10	0.7%
Santa Rosa Junior College	Santa Rosa	10	0.7%
UC Santa Cruz	Santa Cruz	10	0.7%
<b>Subtotal (Number of Transfer Institutions = 37 )</b>		<b>1,232</b>	<b>84.7%</b>
<b>Other Institutions (Number of Transfer Institutions = 74 )</b>		<b>223</b>	<b>15.3%</b>
<b>Total (Number of Transfer Institutions = 111 )</b>		<b>1,455</b>	<b>100.0%</b>

\* Ten or more matriculants from named transfer institution.

**With 145 students transferring to UCSD (10% of the total), San Diego Mesa College tops the list of major feeder transfer institutions.**



**New  
Transfer  
Student  
Academic  
Preparation**

## ■ Academic Preparation: New Transfer Students

Table 39.

### New Transfer Cohort by Transfer GPA Averages Fall Quarter

Transfer	1993	1998	1999	2000	2001	2002	2003
• Transfer GPA	3.14	3.27	3.25	3.29	3.30	3.32	3.34

Table 40.

### New Transfer Cohort by Academic Indicator Ranges Fall Quarter

Transfer GPA Range	Percentage in Range	
	1993	2003
• 3.90 - High	6%	4%
• 3.60 - 3.89	17%	23%
• 3.30 - 3.59	23%	28%
• 3.00 - 3.29	29%	29%
• 2.70 - 2.99	18%	12%
• Low - 2.69	7%	4%
<b>Total</b>	<b>100%</b>	<b>100%</b>

} 46%      } 55%

Reaching a record high, the mean transfer GPA for the 2003 new transfer cohort was 3.34.

Approximately, 27% of the new transfer cohort had a GPA of 3.60 and higher.



**■ Degrees  
Conferred**

# ■ Degrees Conferred

Table 41.

Degrees Conferred: All Degree Types							Fall Quarter
All Degree Types	1992/1993	1998/1999	1999/2000	2000/2001	2001/2002	2002/2003	10 Year Δ
• Bachelors	3,372 79%	3,574 81%	3,530 78%	3,713 79%	3,922 80%	4,248 79%	+26%
• Masters	408 10%	358 8%	408 9%	423 9%	495 10%	573 11%	+40%
• Candidate in Philosophy	148 3%	120 3%	150 3%	147 3%	117 2%	170 3%	+15%
• Doctor of Philosophy	280 7%	303 7%	294 7%	285 6%	278 6%	279 5%	-0%
• Doctor of Medicine	69 2%	35 1%	130 3%	136 3%	61 1%	128 2%	+86%
<b>Total</b>	<b>4,277</b>	<b>4,390</b>	<b>4,512</b>	<b>4,704</b>	<b>4,873</b>	<b>5,398</b>	<b>+26%</b>

Setting a new record, UCSD awarded more than fifty-three hundred undergraduate, graduate and professional degrees in 2002/2003.

Figure 19.

Degrees Conferred Undergraduate and Graduate Degree Trends

Fall Quarter

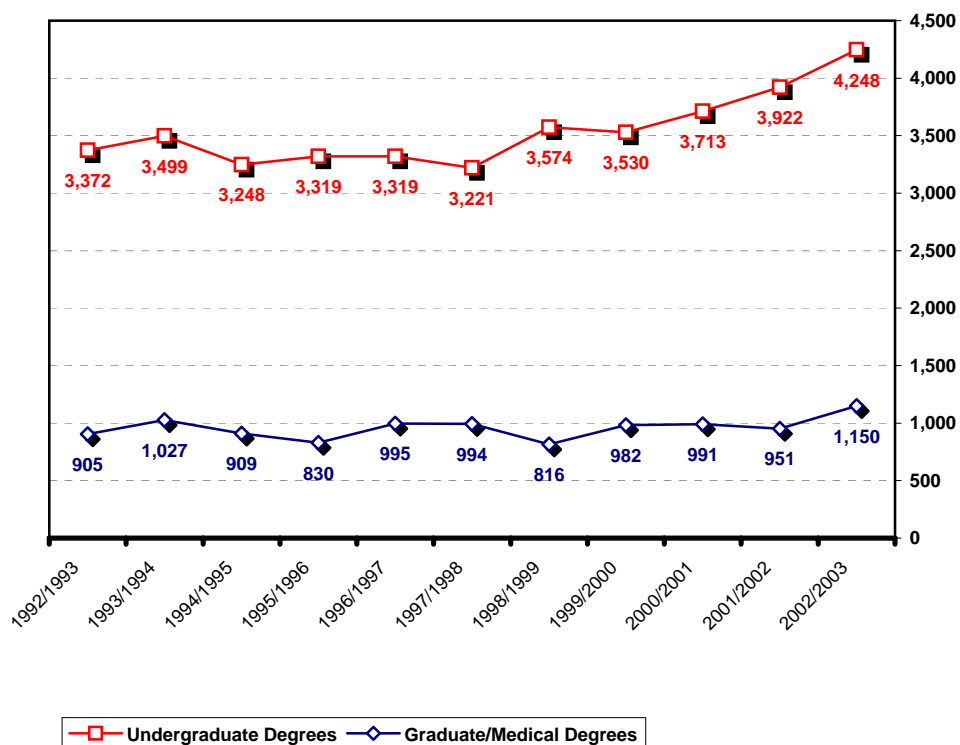


Table 42.

**Undergraduate Degrees by Gender** Fall Quarter

Gender	1992/1993	1998/1999	1999/2000	2000/2001	2001/2002	2002/2003	10 Year Δ
• Male	1,709 51%	1,728 48%	1,665 47%	1,691 46%	1,809 46%	1,988 47%	+16%
• Female	1,663 49%	1,846 52%	1,865 53%	2,022 54%	2,113 54%	2,260 53%	+36%
<b>Total UG Degrees</b>	<b>3,372</b>	<b>3,574</b>	<b>3,530</b>	<b>3,713</b>	<b>3,922</b>	<b>4,248</b>	<b>+26%</b>

Of the 4,248 undergraduate degrees awarded in 2002/2003, the majority (53%) were awarded to women.

Figure 20.

**Undergraduate Degrees by Gender** Fall Quarter

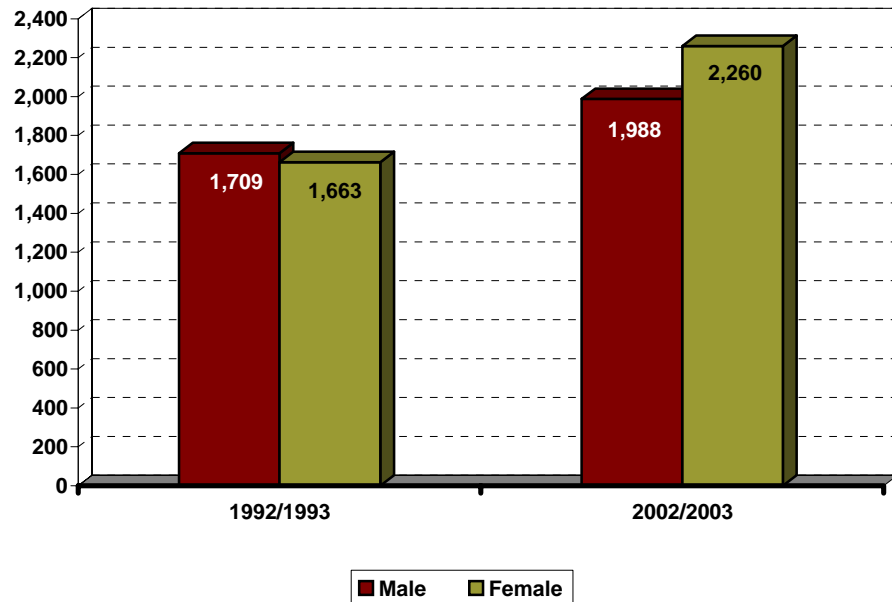




Table 43.

**Undergraduate Degrees by Ethnicity** Fall Quarter

Ethnicity	1992/1993	1998/1999	1999/2000	2000/2001	2001/2002	2002/2003	10 Year Δ
• African-American	66 2%	57 2%	65 2%	59 2%	58 1%	64 2%	-3%
• Mexican-American	190 6%	276 8%	255 7%	293 8%	284 7%	316 7%	+66%
• Native-American	21 1%	24 1%	35 1%	34 1%	25 1%	29 1%	+38%
• Asian	496 15%	1,005 28%	1,011 29%	1,029 28%	1,039 26%	1,263 30%	+155%
• Caucasian	2,186 65%	1,616 45%	1,482 42%	1,550 42%	1,667 43%	1,692 40%	-23%
• Filipino	104 3%	173 5%	213 6%	193 5%	191 5%	204 5%	+96%
• Latino	101 3%	84 2%	64 2%	95 3%	90 2%	91 2%	-10%
• Other/Undeclared	208 6%	339 9%	405 11%	460 12%	568 14%	589 14%	+183%
<b>Total UG Degrees</b>	<b>3,372</b>	<b>3,574</b>	<b>3,530</b>	<b>3,713</b>	<b>3,922</b>	<b>4,248</b>	<b>+26%</b>

Almost one-half (47%) of the bachelor's degrees were awarded to students of color.

Figure 21.

**Undergraduate Degrees by Ethnicity** Fall Quarter

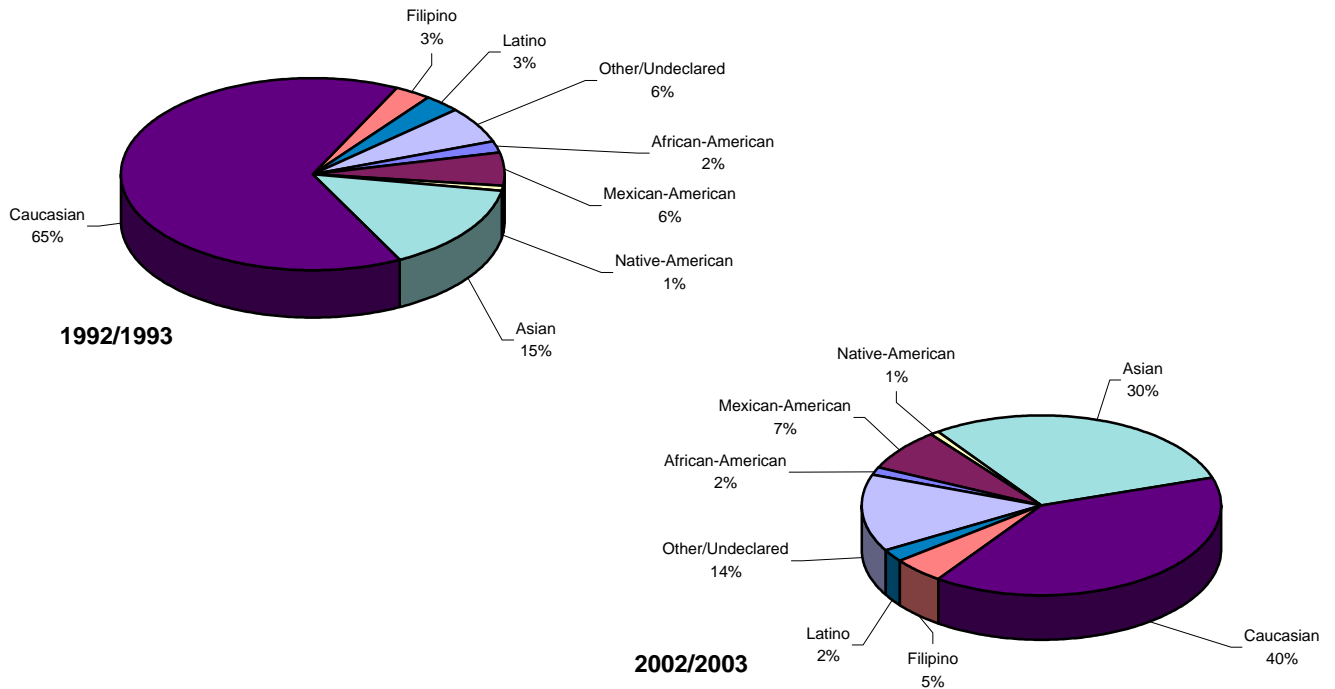


Table 44.

**Undergraduate Degrees by Major Field of Study** Fall Quarter

Major Field of Study	1992/1993	1998/1999	1999/2000	2000/2001	2001/2002	2002/2003	10 Year Δ
• Arts	140 4%	156 4%	147 4%	214 6%	236 6%	300 7%	+114%
• Engineering	399 12%	446 13%	533 15%	540 15%	563 14%	674 16%	+69%
• Humanities	392 12%	312 9%	250 7%	273 7%	244 6%	226 5%	-42%
• Science/Math	802 24%	1,160 32%	1,102 31%	1,029 28%	957 24%	994 23%	+24%
• Social Science	1,626 48%	1,494 42%	1,494 42%	1,649 44%	1,916 49%	2,051 48%	+26%
• Double/Special	13 0%	6 0%	4 0%	8 0%	6 0%	3 0%	-77%
<b>Total UG Degrees</b>	<b>3,372</b>	<b>3,574</b>	<b>3,530</b>	<b>3,713</b>	<b>3,922</b>	<b>4,248</b>	<b>+26%</b>

The largest number of bachelor's degrees were awarded to Social Science majors followed by Science/Math.

Table 45.

**Undergraduate Degrees by College** Fall Quarter

College	1992/1993	1998/1999	1999/2000	2000/2001	2001/2002	2002/2003	10 Year Δ
• Revelle	673 20%	708 20%	682 19%	650 18%	725 18%	793 19%	+18%
• John Muir	917 27%	837 23%	766 22%	847 23%	925 24%	937 22%	+2%
• Thurgood Marshall	707 21%	751 21%	771 22%	804 22%	792 20%	940 22%	+33%
• Earl Warren	767 26%	888 25%	938 27%	968 26%	979 25%	1,067 25%	+39%
• Eleanor Roosevelt*	308 9%	390 11%	373 11%	444 12%	501 13%	511 12%	+66%
<b>Total UG Degrees</b>	<b>3,372</b>	<b>3,574</b>	<b>3,530</b>	<b>3,713</b>	<b>3,922</b>	<b>4,248</b>	<b>+26%</b>

\* Eleanor Roosevelt College enrolled its first class of undergraduates in 1988.

Table 46.

**Undergraduate Degrees by 1st Generation College Status** Fall Quarter

College Status	1992/1993	1998/1999	1999/2000	2000/2001	2001/2002	2002/2003	10 Year $\Delta$
• First Generation	NA	855	793	859	870	998	NA
	NA	24%	22%	23%	22%	23%	
• Not First Generation	NA	2,719	2,737	2,854	3,052	3,250	NA
	NA	76%	78%	77%	78%	77%	
<b>Total UG Degrees</b>	<b>NA</b>	<b>3,574</b>	<b>3,530</b>	<b>3,713</b>	<b>3,922</b>	<b>4,248</b>	<b>NA</b>

Table 47.

**Undergraduate Degrees by Income Group** Fall Quarter

Income	1992/1993	1998/1999	1999/2000	2000/2001	2001/2002	2002/2003	10 Year $\Delta$
• High ( $\geq$ \$98,401)	NA	721	746	758	828	972	NA
	NA	20%	21%	20%	21%	23%	
• Medium High (\$65,601 - \$98,400)	NA	564	655	614	618	612	NA
	NA	16%	19%	17%	16%	14%	
• Medium Low (\$32,801 - \$65,600)	NA	694	657	850	872	851	NA
	NA	19%	19%	23%	22%	20%	
• Low ( $\leq$ \$32,800)	NA	681	643	760	735	837	NA
	NA	19%	18%	20%	19%	20%	
• Missing	NA	914	829	731	869	976	NA
	NA	26%	23%	20%	22%	23%	
<b>Total UG Degrees</b>	<b>NA</b>	<b>3,574</b>	<b>3,530</b>	<b>3,713</b>	<b>3,922</b>	<b>4,248</b>	<b>NA</b>

\* 1998-1999 Income Categories:

High = Income  $\geq$  \$87,001

Medium High = \$58,001-\$87,000

Medium Low = \$29,001-\$58,000

Low = Income  $\leq$  \$29,000

Table 48.

**Time-to-Degree\*/Academic Performance**  
**Entered UCSD from High School** Fall Quarter

Undergraduate Degrees	1992/1993	1998/1999	1999/2000	2000/2001	2001/2002	2002/2003
• Time-to-Degree						
Average Elapsed Time in Years	4.6 yrs.	4.4 yrs.	4.5 yrs.	4.4 yrs.	4.4 yrs.	4.5 yrs.
Average Elapsed Time in Quarters	13.7 qtrs.	13.3 qtrs.	13.5 qtrs.	13.2 qtrs.	13.2 qtrs.	13.5 qtrs.
• GPA at Graduation	3.14	3.14	3.14	3.16	3.14	3.16
GPA ≥ 3.5 (B+ or greater)	17.9%	21.5%	21.5%	22.4%	20.2%	22.7%
3.00 ≤ GPA < 3.5 (B to B+)	48.5%	42.6%	42.8%	44.3%	44.8%	43.4%
2.50 ≤ GPA < 3.00 (C+ to B)	27.7%	28.2%	28.1%	26.4%	27.6%	26.6%
2.0 ≤ GPA < 2.50 (C to C+)	5.9%	7.7%	7.6%	6.9%	7.3%	7.2%

\* Time-to-degree is reported in elapsed quarters from first enrollment date to graduation. Only the records of students who enter UCSD in the Fall Quarter are included in time-to-degree calculations. An academic year is defined as three quarters; twelve quarters equal four years. Summer degrees are combined with Fall degrees, and combined, represent one quarter.

The average time-to-degree for undergraduate students entering from high school was just over 13 quarters or 4.5 years. The average GPA for the 2002/2003 graduating class was 3.16.

Figure 22.

**Grade Distribution: Degree Recipients** Fall Quarter

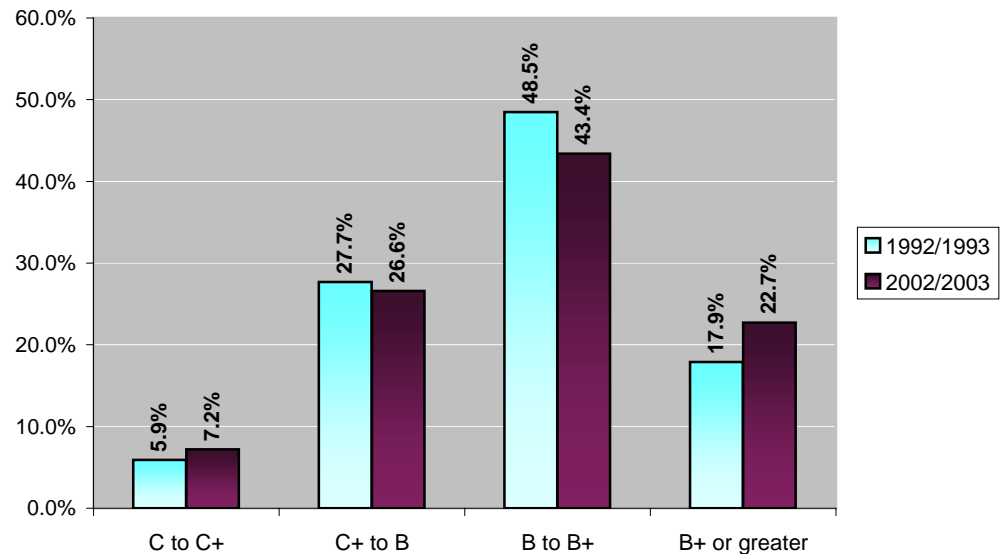


Table 49.

**Time-to-Degree\*/Academic Performance**  
**Entered UCSD from a Two-Year Community College** Fall Quarter

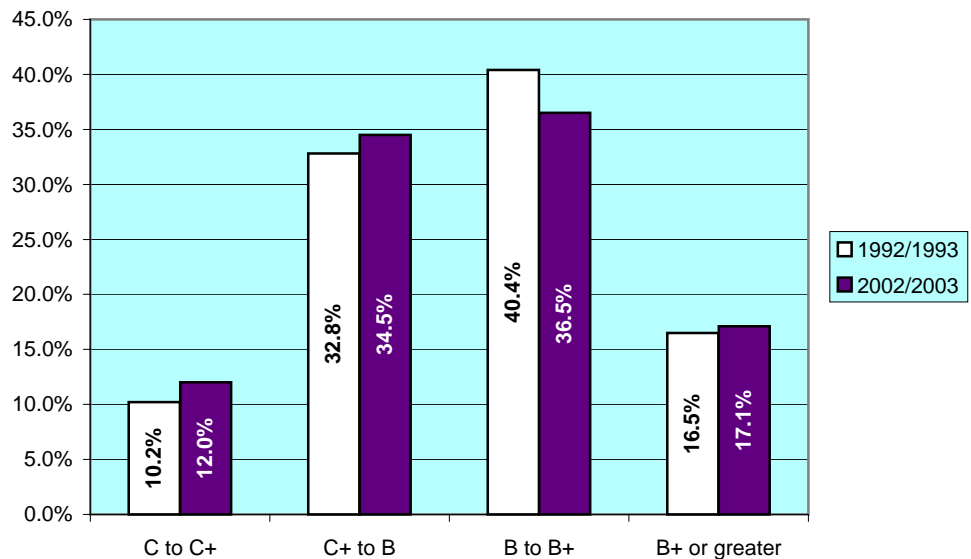
Undergraduate Degrees	1992/1993	1998/1999	1999/2000	2000/2001	2001/2002	2002/2003
• Time-to-Degree						
Average Elapsed Time in Years	3.2 yrs.	2.9 yrs.	3.0 yrs.	2.9 yrs.	2.8 yrs.	2.7 yrs.
Average Elapsed Time in Quarters	9.6 qtrs.	8.7 qtrs.	9.0 qtrs.	8.7 qtrs.	8.4 qtrs.	8.2 qtrs.
• GPA at Graduation	3.06	3.04	3.01	3.02	3.03	3.04
GPA $\geq$ 3.5 (B+ or greater)	16.5%	17.7%	16.8%	16.3%	14.7%	17.1%
3.00 $\leq$ GPA < 3.5 (B to B+)	40.4%	36.5%	34.6%	36.3%	39.7%	36.5%
2.50 $\leq$ GPA < 3.00 (C+ to B)	32.8%	32.1%	32.1%	33.3%	32.2%	34.5%
2.0 $\leq$ GPA < 2.50 (C to C+)	10.2%	13.7%	16.5%	13.9%	13.4%	12.0%

\* Time-to-degree is reported in elapsed quarters from first enrollment date to graduation. Only the records of students who enter UCSD in the Fall Quarter are included in time-to-degree calculations. An academic year is defined as three quarters; twelve quarters equal four years. Summer degrees are combined with Fall degrees, and combined, represent one quarter.

Community College transfer students complete their degree requirements at UCSD in under nine quarters or three years. The average GPA for the 2002/2003 graduating class for courses taken at UCSD was 3.04.

Figure 23.

**Grade Distribution: Degree Recipients** Fall Quarter





**■ Appendix:  
Undergraduate  
Major Fields  
of Study /  
Academic  
Departments**

# ■ Undergraduate Major Fields of Study/Academic Departments

## ARTS

### *Music Department*

- MU01 Pre-Interdisciplinary Computing
- MU25 Music
- MU26 Music Humanities
- MU27 Interdisciplinary Computing and the Arts

### *Theatre & Dance Department*

- TH26 Theatre
- TH27 Dance

### *Visual Arts Department*

- VA01 Pre-Interdisciplinary Computing and the Arts
- VA02 Pre-Visual Arts (Media)
- VA26 Visual Arts (Art History/Criticism)
- VA27 Visual Arts (Media)
- VA28 Visual Arts (Studio)
- VA29 Interdisciplinary Computing and the Arts

## SCHOOL OF ENGINEERING

### *Bioengineering Department*

- BE01 Pre-Bioengineering
- BE02 Pre-Bioengineering: Pre-Medical
- BE03 Pre-Bioengineering: Biotechnology
- BE04 Pre-Bioengineering: Bioinformatics
- BE25 Bioengineering
- BE26 Bioengineering: Pre-Medical
- BE27 Bioengineering: Biotechnology
- BE28 Bioengineering: Bioinformatics

### *Chemical Engineering*

- CE25 Chemical Engineering

### *Computer Science and Engineering Department*

- CS03 Pre-Computer Science with Specialization in Bioinformatics
- CS25 Computer Engineering (see also Electrical and Computer Engineering EC26)
- CS26 Computer Science
- CS27 Computer Science with Specialization in Bioinformatics

### *Electrical and Computer Engineering Department*

- EC03 Pre-Electrical Engineering
- EC04 Pre-Engineering Physics
- EC26 Computer Engineering (see also Computer Science and Engineering CS25)
- EC27 Electrical Engineering
- EC28 Engineering Physics

### *Mechanical and Aerospace Engineering Department*

- MC25 Aerospace Engineering
- MC27 Mechanical Engineering
- MC28 Engineering Science
- MC29 Environmental Engineering

### *Structural Engineering*

- SE25 Aerospace Engineering
- SE26 Engineering Sciences
- SE27 Structural Engineering

## SCIENCE AND MATH

### *Biology Department*

- BI07 Pre-Biology with Specialization in Bioinformatics
- BI28 Animal Physiology and Neuroscience
- BI29 Biochemistry and Cell Biology  
(see also Chemistry CH31)
- BI30 Ecology, Behavior and Evolution
- BI31 General Biology
- BI32 Microbiology
- BI33 Molecular Biology
- BI34 Biology with Specialization in Bioinformatics

### *Chemistry and Biochemistry Department*

- CH01 Pre-Bioinformatics
- CH25 Chemistry
- CH28 Chemistry with Specialization in Earth Sciences
- CH31 Biochemistry/Chemistry (see also Biology BI29)
- CH32 Chemical Physics
- CH33 Chemical Education
- CH34 Environmental Chemistry
- CH35 Pharmacological Chemistry
- CH36 Molecular Synthesis
- CH37 Bioinformatics

### *Earth Sciences Program*

- EA25 Earth Sciences
- EA26 Earth Sciences - Chemistry
- EA27 Earth Sciences - Physics

### *Environmental Systems*

- ES25 Environmental Systems (Earth Sciences)
- ES26 Environmental Systems (Ecology, Behavior, & Evolution)
- ES27 Environmental Systems (Environmental Chemistry)
- ES28 Environmental Systems (Environmental Policy)

### *Mathematics Department*

- MA01 Pre-Mathematics - Computer Science
- MA27 Mathematics (Applied)
- MA28 Applied Mathematics (Scientific Programming)
- MA29 Mathematics
- MA30 Mathematics-Computer Science
- MA31 Mathematics/Applied Science
- MA32 Mathematics/Secondary Education
- MA33 Joint Major in Mathematics & Economics

### *Physics Department*

- PY26 Physics-Biophysics
- PY28 Physics with Specialization in Earth Sciences
- PY29 Physics
- PY30 General Physics
- PY31 General Physics, Secondary Education
- PY32 Physics with Specialization in Materials Physics
- PY33 Physics with Specialization in Computational Physics
- PY34 Physics with Specialization in Astrophysics

**HUMANITIES**

*Classical Studies*

CL25 Classical Studies

*History Department*

HI25 History

*Literature Department*

LT01 Pre-Literature/Writing  
 LT29 French Literature  
 LT31 German Literature  
 LT32 Russian Literature  
 LT33 Spanish Literature  
 LT34 Literature/Writing  
 LT35 Italian Literature  
 LT36 Literatures in English  
 LT37 Literature/Composite Major  
 LT38 Literatures of the World

*Philosophy Department*

PL25 Philosophy

**SOCIAL SCIENCE**

*Anthropology Department*

AN25 Anthropology  
 AN26 Anthropology (Concentration in Biological Anthropology)  
 AN27 Anthropology (Concentration in Archaeology)

*Chinese Studies*

CN25 Chinese Studies

*Cognitive Science Department*

CG25 Cognitive Science  
 CG27 Cognitive Science with Specialization in Computation  
 CG28 Cognitive Science with Specialization in Human Cognition  
 CG29 Cognitive Science with Specialization in Neuroscience  
 CG30 Cognitive Science with Specialization in Hum. Comp. Inter.  
 CG31 Cognitive Science with Clinical Aspects in Cognition

*Communication Department*

CM26 Communication

*Critical Gender Studies*

CR25 Critical Gender Studies

*Economics Department*

EN25 Economics  
 EN26 Management Science  
 EN28 Joint Major in Mathematics & Economics

*Ethnic Studies Department*

ET25 Ethnic Studies

*German Studies*

GS25 German Studies

*Human Development Program*

HD01 Pre-Human Development  
 HD25 Human Development

*International Studies*

IS25 International Studies - Anthropology  
 IS26 International Studies - Economics  
 IS27 International Studies - History  
 IS28 International Studies - Linguistics

**SOCIAL SCIENCE - continued**

*International Studies - continued*

IS29 International Studies - Literature  
 IS30 International Studies - Political Science  
 IS31 International Studies - Sociology

*Italian Studies*

IT25 Italian Studies

*Japanese Studies*

JA25 Japanese Studies

*Judaic Studies*

JU25 Judaic Studies

*Latin American Studies*

LA25 Latin American Studies

*Linguistics Department*

LN25 Linguistics  
 LN29 Linguistics (Specialization in Language and Society)  
 LN32 Linguistics (Specialization in Cognition & Language)  
 LN33 Language Studies (Specialization in [the language of specialization])

*Political Science Department*

PS25 Political Science  
 PS26 Political Science-American Politics  
 PS27 Political Science-Comparative Politics  
 PS28 Political Science-International Relations  
 PS29 Political Science-Political Theory  
 PS30 Political Science-Public Law  
 PS31 Political Science-Public Policy

*Psychology Department*

PC26 Psychology

*Program for the Study of Religion*

RE26 Study of Religion

*Russian and Soviet Studies*

RU25 Russian and Soviet Studies

*Sociology Department*

SO25 Sociology

*Third World Studies*

TW25 Third World Studies

*Urban Studies and Planning Program*

US26 Urban Studies and Planning

**SPECIAL AND UNDECLARED**

*Interdisciplinary Studies*

IN25 John Muir College Special Project Major  
 IN26 Revelle College Individual Major  
 IN27 Eleanor Roosevelt College Individual Studies  
 IN28 Earl Warren College Individual Studies  
 IN29 Thurgood Marshall College Individual Studies

*Undeclared*

UN27 Undeclared

*Limited Status*

*Special-Employee*





The *Student Digest* is an annual publication of the  
Office of Student Research & Information,  
Student Affairs.

This document is also available on the  
World Wide Web at:

<http://ugr8.ucsd.edu>