



UCSD

University of California,
San Diego

2002 - 2003



■ DEGREES Conferred



Profile
of
Degree
Recipients

Office of Student Research & Information
Student Affairs

<http://studentresearch.ucsd.edu>

DEGREES CONFERRED

Profile of Degree Recipients

2002 - 2003

University of California, San Diego

William B. Armstrong, Ph.D.
Director

Heidi M. Carty, Ph.D.
Principal Research Analyst

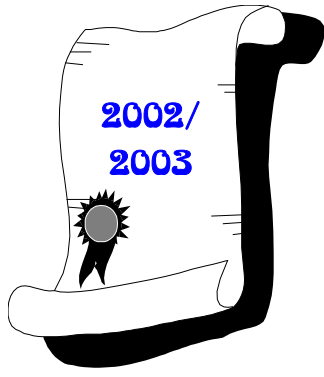
Greg Martin
Programmer Analyst

Jason R. Thornton
Research Analyst

Student Research & Information
Student Affairs
University of California, San Diego
La Jolla, CA 92093-0088
<http://ugr8.ucsd.edu>

Highlights

- Reaching a record high, UC San Diego awarded a combined total of 5,398 undergraduate, graduate and medical degrees during the 2002/2003 academic year.
- For the fifth consecutive year, UCSD awarded a record high number of undergraduate degrees. In 2002/2003 this number rose to 4,248 undergraduate recipients.
- Of the 4,248 undergraduate degrees awarded in 2002/2003, the largest percentage (48%; 2,051) were granted to social science majors.
- While the majority (53%) of undergraduate degrees were awarded to females, the majority of graduate (M.A./M.S., 56%; Ph.D., 63%) and medical degrees (53%) were awarded to males.
- More than one-half (52%) of all first-time freshmen who earned a bachelor's degree at UCSD did so in four years; just over two-thirds (69%) graduated within 13 quarters or just over four years, respectively.
- On average, transfer students took three years to complete their bachelor degree requirements at UCSD. Over three-quarters (76%) of the transfer students graduated within nine quarters.
- Sixty-two percent of the 2002/2003 undergraduate degree recipients graduated with a grade point average of 3.0 ('B') or better; roughly one in five (21%) graduated with a grade point average of 3.5 ('B+') or better. Overall, the average GPA was 3.12 for all undergraduate recipients in 2002/2003.



UC SAN DIEGO AWARDED A TOTAL OF 5,398 UNDERGRADUATE, GRADUATE AND MEDICAL DEGREES DURING THE 2002/2003 ACADEMIC YEAR.

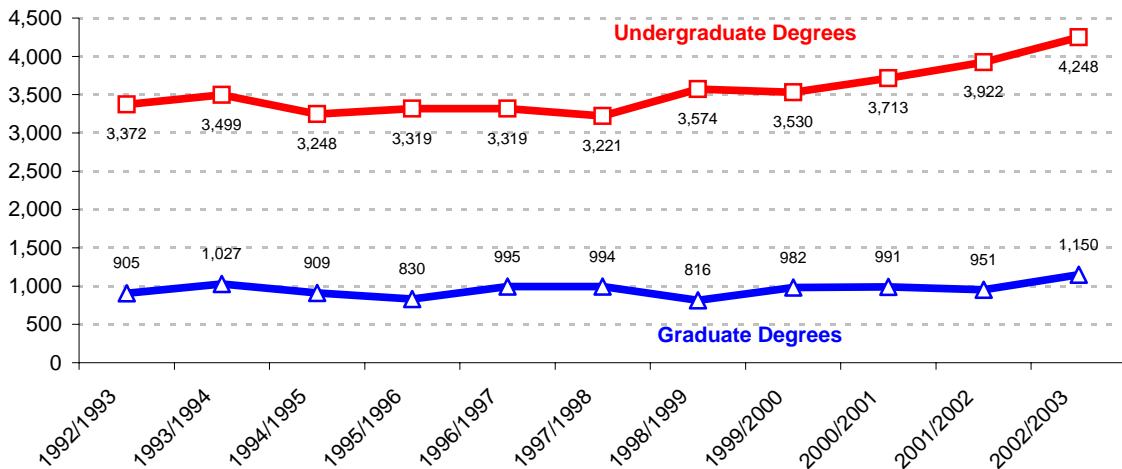
Degrees by the Numbers: All Degree Types

Award Year	Bachelor	Master	Candidate in Phil.	Doctor of Philosophy	Doctor of Medicine	Total
2002/2003	4,248	573	170	279	128	5,398
2001/2002	3,922	495	117	278	61	4,873
2000/2001	3,713	423	147	285	136	4,704
1999/2000	3,530	408	150	294	130	4,512
1998/1999	3,574	358	120	303	35	4,390
1997/1998	3,221	404	178	310	102	4,215
1996/1997	3,319	364	148	281	202	4,314
1995/1996	3,319	384	149	259	38	4,149
1994/1995	3,248	392	137	274	106	4,157
1993/1994	3,499	459	143	285	140	4,526
1992/1993	3,372	408	148	280	69	4,277



For the third consecutive year, a record high number of degrees were awarded by UCSD. The number of bachelor's degrees awarded hit a peak high of 4,248 in 2002/2003.

Trends in Degrees Awarded





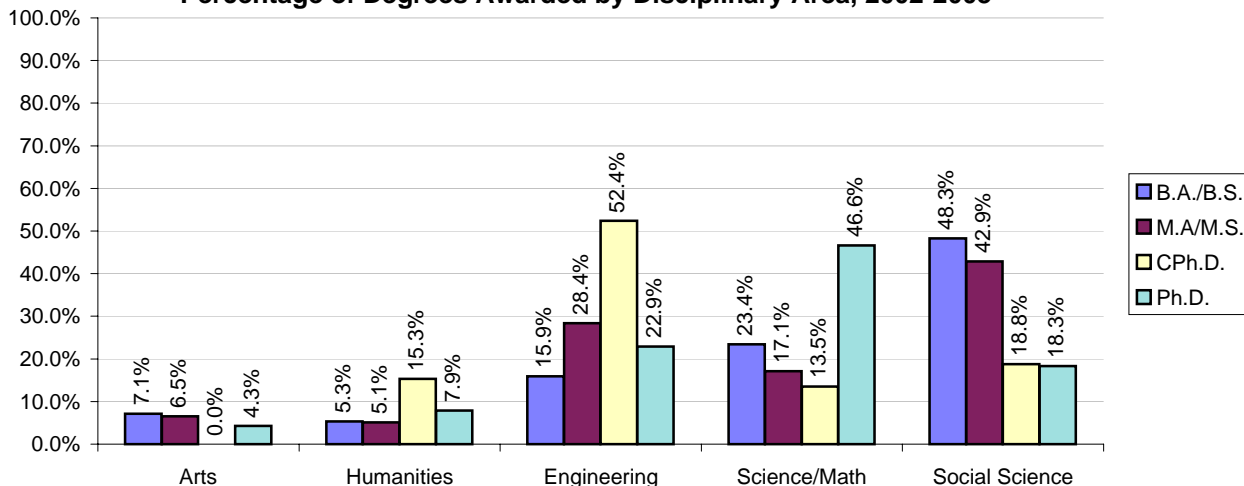
Student Characteristics: All Degree Types

Background Characteristics	B.A./B.S. N=4,248	M.A./M.S. N=573	CPh.D. N=170	Ph.D. N=279	M.D. N=128
Gender					
Male	46.8%	55.8%	71.2%	62.7%	53.1%
Female	53.2%	44.2%	28.8%	37.3%	46.9%
Ethnicity					
African Am.	1.5%	0.3%	0.6%	0.7%	1.6%
Asian	29.7%	12.6%	8.2%	7.2%	33.6%
Mexican Am.	7.4%	3.7%	2.4%	2.2%	3.1%
Filipino	4.8%	3.3%	1.2%	0.7%	0.8%
Latino	2.1%	1.9%	2.4%	1.8%	3.1%
Native Am.	0.7%	0.7%	0.6%	0.7%	0.0%
Caucasian	39.8%	52.7%	37.1%	52.3%	43.8%
Other	13.9%	24.8%	47.6%	34.4%	14.1%
Disciplinary Area					
Arts	7.1%	6.5%	0.0%	4.3%	0.0%
Humanities	5.3%	5.1%	15.3%	7.9%	0.0%
Engineering	15.9%	28.4%	52.4%	22.9%	0.0%
Science/Math	23.4%	17.1%	13.5%	46.6%	100.0%
Social Science	48.3%	42.9%	18.8%	18.3%	0.0%
Dbl/Special	0.1%	0.0%	0.0%	0.0%	0.0%
College					
Revelle	18.7%	NA	NA	NA	NA
John Muir	22.1%	NA	NA	NA	NA
Thurgood Marshall	22.1%	NA	NA	NA	NA
Earl Warren	25.1%	NA	NA	NA	NA
Eleanor Roosevelt	12.0%	NA	NA	NA	NA

The majority of bachelor's degrees were awarded to females (53%).

Just under one-half (48%) of all bachelor's degrees were awarded to social science majors. Just under one-half (47%) of all Ph.D.'s were awarded to students in the fields of science/math.

Percentage of Degrees Awarded by Disciplinary Area, 2002-2003



Trends in Time-to-Degree¹: Academic Performance

Academic Performance	Award Year								
	'94/'95	'95/'96	'96/'97	'97/'98	'98/'99	'99/'00	'00/'01	'01/'02	'02/'03

Bachelor Degree Recipients Who Entered From High School

Average Time-to-Degree	13.4	13.4	13.3	13.3	13.3	13.4	13.1	13.3	13.5
Median Time-to-Degree	12.0	12.0	13.0	12.0	12.0	13.0	12.0	12.0	12.0
Average Units	203	205	204	204	204	205	205	205	207
GPA at Graduation	3.17	3.17	3.15	3.14	3.14	3.14	3.16	3.14	3.16
% with GPA = 3.0 - 3.5	46%	46%	43%	44%	42%	42%	45%	45%	43%
% with GPA ≥ 3.5	21%	22%	22%	21%	22%	22%	22%	20%	23%

Bachelor Degree Recipients Who Entered From a Two-Year Community College

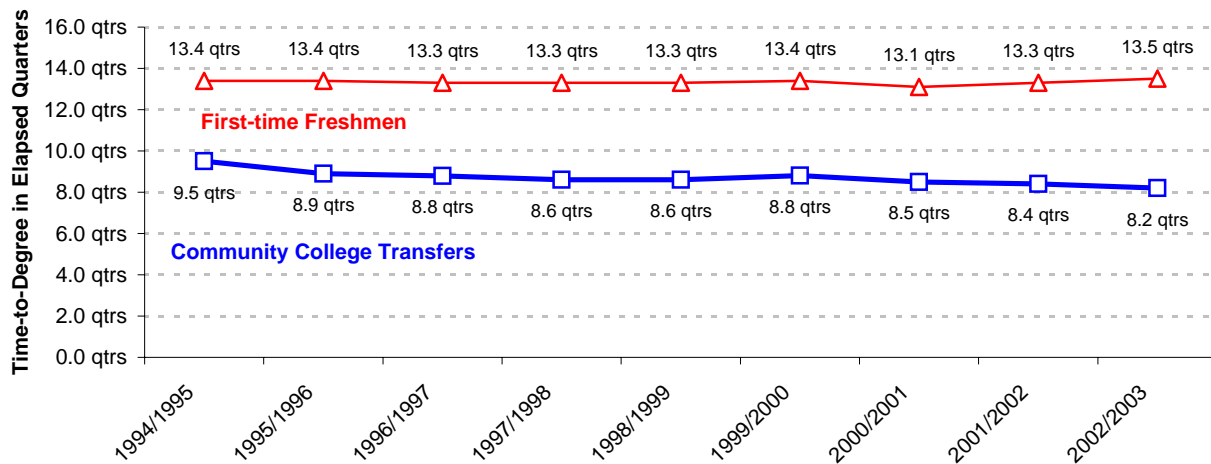
Average Time-to-Degree	9.5	8.9	8.8	8.6	8.6	8.8	8.5	8.4	8.2
Median Time-to-Degree	9.0	9.0	9.0	9.0	8.0	8.0	8.0	7.0	6.0
Average Units	211	208	210	209	207	207	207	205	206
GPA at Graduation	3.02	3.03	3.01	3.03	3.04	3.01	3.05	3.03	3.04
% with GPA = 3.0 - 3.5	37%	36%	35%	37%	36%	34%	37%	40%	36%
% with GPA ≥ 3.5	15%	18%	17%	17%	18%	17%	16%	15%	17%

Total Bachelor Degree Recipients

Average Units	206	206	206	206	205	206	206	205	207
GPA at Graduation	3.10	3.11	3.10	3.10	3.11	3.10	3.12	3.11	3.12
% with GPA = 3.0 - 3.5	41%	42%	40%	41%	41%	40%	42%	43%	41%
% with GPA ≥ 3.5	19%	20%	20%	20%	20%	20%	20%	19%	21%

¹Time-to-Degree is reported in elapsed quarters from first enrollment date to graduation. Only the records of students who enter UCSD in the Fall quarter are included in time-to-degree calculations. An academic year is defined as three quarters; twelve quarters equal four years. Summer degrees are combined with Fall degrees and represent one quarter.

Time-to-Degree Trends



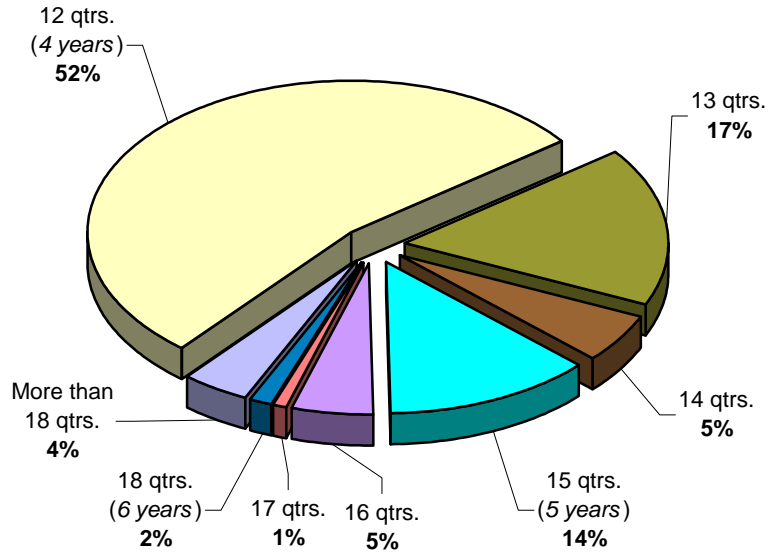
Nominal Time-to-Degree

The majority (52%) of first-time freshmen earning a bachelor's degree at UCSD did so in four years; just over two-thirds (69%) graduated within 13 quarters or just over four years.

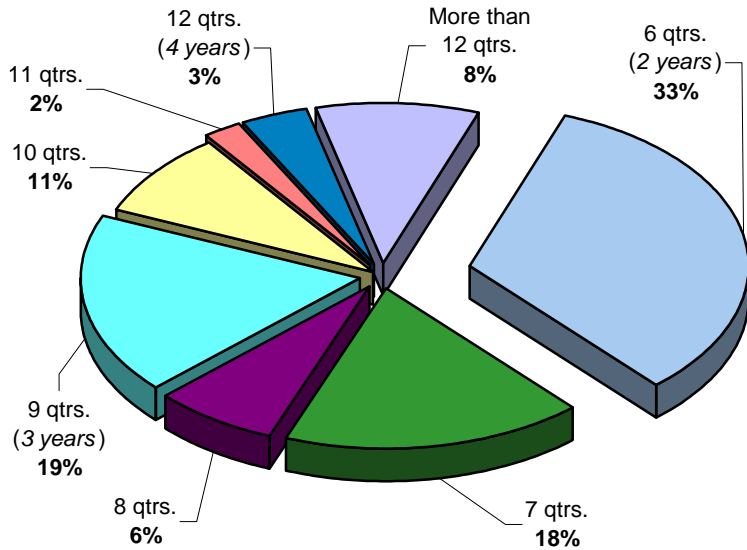
First-Time Freshmen

Cumulative Frequency:

52% graduated within 12 qtrs.
 69% graduated within 13 qtrs.
 74% graduated within 14 qtrs.
 88% graduated within 15 qtrs.
 93% graduated within 16 qtrs.
 94% graduated within 17 qtrs.
 96% graduated within 18 qtrs.



On average, transfer students took three years to complete their bachelor degree requirements at UCSD. Approximately, three-quarters (76%) graduated within three years (4 quarters). One-third graduated within two years (6 quarters).



Community College Transfer

Cumulative Frequency:

33% graduated within 6 qtrs.
 51% graduated within 7 qtrs.
 57% graduated within 8 qtrs.
 76% graduated within 9 qtrs.
 87% graduated within 10 qtrs.
 89% graduated within 11 qtrs.
 92% graduated within 12 qtrs.



Characteristics of Bachelor Degree Recipients: 2002/2003

Student Characteristics	N	%	GPA Mean	Academic Profile		Units Mean	Time-to-Degree	
				% GPA 3.0 - 3.5	% GPA ≥ 3.5		Freshmen Mean	C.C. Transfer ² Mean
Gender								
Male	1,988	46.8%	3.08	38.1%	19.7%	209	13.7	8.6
Female	2,260	53.2%	3.16	43.9%	22.5%	205	13.0	7.9
Ethnicity								
African Am.	64	1.5%	2.93	39.1%	7.8%	208	14.0	8.6
Asian	1,263	29.7%	3.06	40.9%	16.0%	208	13.3	8.4
Mexican Am.	316	7.4%	2.97	35.1%	14.6%	204	14.3	8.6
Filipino	204	4.8%	2.95	36.3%	10.8%	210	14.0	8.3
Latino	91	2.1%	3.09	40.7%	23.1%	208	13.5	8.6
Native Am.	29	0.7%	3.17	48.3%	24.1%	211	14.7	9.9
Caucasian	1,692	39.8%	3.21	42.8%	27.1%	205	13.0	7.9
Other	589	13.9%	3.15	42.1%	23.4%	209	13.2	8.5
Disciplinary Area								
Arts	300	7.1%	3.27	52.0%	26.0%	207	13.9	8.5
Humanities	226	5.3%	3.17	43.4%	24.3%	205	13.4	8.0
Engineering	674	15.9%	3.11	38.3%	20.9%	227	13.9	9.8
Science/Math	994	23.4%	3.12	37.5%	23.4%	212	13.2	8.6
Social Science	2,051	48.3%	3.11	42.1%	19.1%	198	13.0	7.5
Dbl/Special	3	0.1%	3.55	33.3%	66.7%	245	11.0	6.0
College								
Revelle	793	18.7%	3.09	37.3%	21.7%	215	13.4	9.1
Muir	937	22.1%	3.19	43.5%	24.1%	206	13.2	8.0
Marshall	940	22.1%	3.09	44.5%	16.0%	201	13.1	8.0
Warren	1,067	25.1%	3.10	38.5%	22.3%	207	13.5	8.2
Roosevelt	511	12.0%	3.14	42.5%	22.3%	206	13.2	8.4
School Type								
High School	2,968	69.9%	3.16	43.4%	22.6%	207	13.3	--
2yr College	1,193	28.1%	3.04	36.2%	17.1%	206	--	8.2
4yr College/Univ.	69	1.6%	3.24	39.1%	30.4%	204	--	--
Unknown	18	0.4%	2.67	11.1%	16.7%	208	--	--
Total Population	4,248	100.0%	3.12	41.2%	21.2%	207	13.3	8.2

Time-to-degree for bachelor degree recipients tends to vary by disciplinary area. In general, engineering majors require more time to complete their degree requirements compared to non-engineering majors.

On average, first-time freshmen take just over four years (13 quarters) to graduate. Community College transfer students graduate in just under three years or 8 quarters.

²For Transfer students, time-to-degree is calculated only for those students who matriculate from a two-year community college (C.C.). The typical community college transfer student enters UCSD with 90 units of transferable academic credit.

Approximately 62% of the undergraduate degree recipients graduated with a grade point average of 3.0 ('B') or better. One in five graduated with a grade point average of 'B+' or better and an average of 207 units, respectively.



Profile of Bachelor Degree Recipients Majoring in the Arts: 2002/2003



Student Characteristics	N	%	GPA Mean	Academic Profile		Units Mean	Time-to-Degree	
				% GPA 3.0 - 3.5	% GPA ≥ 3.5		Freshmen Mean	C.C. Transfer Mean
Gender								
Male	152	50.7%	3.20	48.7%	21.7%	205	14.3	8.0
Female	148	49.3%	3.33	55.4%	30.4%	208	13.5	8.1
Ethnicity								
African Am.	3	1.0%	3.09	33.3%	33.3%	277	17.0	6.0
Asian	96	32.0%	3.20	63.5%	14.6%	204	13.8	8.0
Mexican Am.	19	6.3%	3.38	52.6%	31.6%	207	13.8	7.8
Filipino	18	6.0%	3.10	50.0%	16.7%	206	14.3	7.2
Latino	4	1.3%	3.19	25.0%	25.0%	204	13.5	11.5
Native Am.	1	0.3%	3.54	0.0%	100.0%	192	--	--
Caucasian	120	40.0%	3.32	46.7%	33.3%	206	14.0	7.6
Other	39	13.0%	3.31	46.2%	30.8%	211	13.8	9.4
College								
Revelle	16	5.3%	3.02	50.0%	0.0%	213	13.9	0.0
Muir	96	32.0%	3.36	54.2%	32.3%	209	13.4	8.5
Marshall	64	21.3%	3.18	50.0%	21.9%	204	14.0	7.7
Warren	72	24.0%	3.31	51.4%	30.6%	202	14.1	7.1
Roosevelt	52	17.3%	3.23	51.9%	21.2%	211	14.2	9.8
School Type								
High School	198	66.0%	3.22	54.5%	18.7%	207	13.9	--
2yr College	96	32.0%	3.37	49.0%	39.6%	207	--	8.1
4yr College/Univ.	4	1.3%	3.35	0.0%	50.0%	198	--	--
Unknown	2	0.7%	3.11	0.0%	50.0%	186	--	--
Total Arts	300	100.0%	3.27	52.0%	26.0%	207	13.9	8.1

Muir College awarded the largest number of bachelor's degrees in arts compared to the other four colleges.

A record number of bachelor of arts degrees were awarded in 2002/2003.

Relative to other disciplinary areas, a larger percentage of arts majors graduated with a GPA of 'B' or better. The average GPA was 3.27, respectively.

Bachelor Degrees in the Arts: Trends Profile - 1993/1994 to 2001/2002

Award Year	N	%	GPA Mean	% GPA 3.0 - 3.5	% GPA ≥ 3.5	Units Mean	Freshmen Mean	C.C. Transfer Mean
2001/2002	236	100.0%	3.25	52%	25%	202	13.6	8.5
2000/2001	214	100.0%	3.30	51%	31%	206	13.5	8.1
1999/2000	147	100.0%	3.26	47%	28%	205	13.4	8.4
1998/1999	156	100.0%	3.26	60%	23%	204	13.5	7.7
1997/1998	123	100.0%	3.28	56%	28%	210	13.6	8.4
1996/1997	168	100.0%	3.27	51%	29%	210	13.6	8.9
1995/1996	161	100.0%	3.25	45%	30%	211	13.2	9.4
1994/1995	145	100.0%	3.28	52%	27%	207	13.7	9.7
1993/1994	188	100.0%	3.22	50%	25%	210	14.1	9.2

Humanities

Profile of Bachelor Degree Recipients Majoring in the Humanities: 2002/2003



Student Characteristics	N	%	GPA Mean	Academic Profile		Units Mean	Time-to-Degree	
				% GPA 3.0 - 3.5	% GPA ≥ 3.5		Freshmen Mean	C.C. Transfer Mean
Gender								
Male	97	42.9%	3.12	44.3%	20.6%	212	14.5	7.9
Female	129	57.1%	3.20	42.6%	27.1%	203	12.7	8.1
Ethnicity								
African Am.	0	0.0%	--	--	--	--	--	--
Asian	30	13.3%	3.14	46.7%	23.3%	205	12.8	7.3
Mexican Am.	31	13.7%	3.06	35.5%	19.4%	209	14.6	10.0
Filipino	6	2.7%	3.11	16.7%	33.3%	214	14.3	11.3
Latino	6	2.7%	3.36	50.0%	50.0%	191	11.3	6.5
Native Am.	5	2.2%	3.05	80.0%	0.0%	216	20.5	9.5
Caucasian	113	50.0%	3.21	47.8%	23.0%	203	13.1	7.5
Other	35	15.5%	3.15	31.4%	31.4%	211	13.9	7.9
College								
Revelle	27	11.9%	3.04	44.4%	14.8%	216	14.6	10.0
Muir	69	30.5%	3.21	54.2%	32.3%	205	12.8	8.5
Marshall	58	25.7%	3.13	50.0%	21.9%	201	13.7	7.5
Warren	31	13.7%	3.11	51.4%	30.6%	209	13.6	7.4
Roosevelt	41	18.1%	3.26	51.9%	21.2%	203	13.1	8.8
School Type								
High School	147	65.0%	3.21	42.2%	29.3%	204	13.4	--
2yr College	69	30.5%	3.09	47.8%	14.5%	208	--	8.0
4yr College/Univ.	9	4.0%	3.17	33.3%	22.2%	205	--	--
Unknown	1	0.4%	2.21	0.0%	0.0%	182	--	--
Total Humanities	226	100.0%	3.17	43.4%	24.3%	205	13.4	8.0

The majority (57%) of all students earning a bachelor's degree in humanities were female.

Muir College awarded the largest number of humanities degrees followed by Thurgood Marshall College.

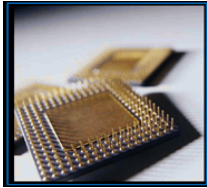
Over two-thirds (68%) of humanities majors graduated with a 'B' or better grade point average; the mean GPA was 3.17, respectively.

Bachelor Degrees in the Humanities: Trends Profile - 1993/1994 to 2001/2002

Award Year	N	%	GPA Mean	% GPA 3.0 - 3.5	% GPA ≥ 3.5	Units Mean	Freshmen Mean	C.C. Transfer Mean
2001/2002	244	100.0%	3.16	43%	22%	203	13.7	8.3
2000/2001	273	100.0%	3.14	48%	19%	202	13.6	7.6
1999/2000	256	100.0%	3.17	44%	24%	201	13.5	8.6
1998/1999	312	100.0%	3.19	45%	27%	201	13.4	9.2
1997/1998	291	100.0%	3.18	44%	26%	202	13.5	8.6
1996/1997	307	100.0%	3.15	48%	19%	201	12.9	8.7
1995/1996	305	100.0%	3.15	49%	21%	202	13.3	8.4
1994/1995	346	100.0%	3.18	43%	26%	202	13.0	9.3
1993/1994	376	100.0%	3.17	43%	22%	200	13.3	7.8

Engineering

Profile of Bachelor Degree Recipients Majoring in Engineering: 2002/2003



Approximately four of every five bachelor of engineering degree recipients were male.

Warren College continues to award the largest proportion (48%) of bachelor's degrees in engineering.

A record high number of bachelor of engineering degrees was awarded in 2002/2003.

Fifty-nine percent of engineering majors graduated with a GPA of 'B' or higher; the average GPA for graduating engineering students was 3.11, respectively.

Student Characteristics	N	%	GPA Mean	Academic Profile		Units Mean	Time-to-Degree							
				% GPA 3.0 - 3.5	% GPA ≥ 3.5		Freshmen Mean	C.C. Transfer Mean						
Gender														
Male	538	79.8%	3.09	37.9%	19.1%	226	14.0	9.9						
Female	136	20.2%	3.20	39.7%	27.9%	230	13.7	9.6						
Ethnicity														
African Am.	3	0.4%	2.88	66.7%	0.0%	232	12.0	11.5						
Asian	265	39.3%	3.05	35.8%	17.0%	227	14.2	9.4						
Mexican Am.	25	3.7%	3.01	36.0%	12.0%	231	15.5	10.5						
Filipino	26	3.9%	2.97	42.3%	7.7%	224	14.7	9.4						
Latino	12	1.8%	3.14	41.7%	25.0%	230	13.4	9.0						
Native Am.	3	0.4%	2.65	0.0%	0.0%	227	16.0	--						
Caucasian	233	34.6%	3.21	38.2%	29.2%	227	13.7	10.0						
Other	107	15.9%	3.13	43.9%	18.7%	228	13.6	10.5						
College														
Revelle	121	18.0%	3.13	34.7%	23.1%	235	13.9	9.3						
Muir	105	15.6%	3.18	44.8%	21.9%	234	14.4	10.0						
Marshall	100	14.8%	3.04	41.0%	13.0%	227	13.5	10.1						
Warren	324	48.1%	3.13	38.0%	22.8%	221	13.7	9.9						
Roosevelt	24	3.6%	2.85	20.8%	12.5%	240	15.9	9.8						
School Type														
High School	435	64.5%	3.15	37.9%	24.6%	227	13.9	--						
2yr College	229	34.0%	3.03	38.0%	14.0%	228	--	9.8						
4yr College/Univ.	9	1.3%	3.26	55.6%	22.2%	231	--	--						
Unknown	1	0.1%	3.33	100.0%	0.0%	241	--	--						
Total Engineering							674	100.0%	3.11	38.3%	20.9%	227	13.9	9.8

Bachelor Degrees in Engineering: Trends Profile - 1993/1994 to 2001/2002

Award Year	N	%	GPA Mean	% GPA 3.0 - 3.5	% GPA ≥ 3.5	Units Mean	Freshmen Mean	C.C. Transfer Mean
2001/2002	563	100.0%	3.08	42%	16%	225	13.9	9.8
2000/2001	540	100.0%	3.10	43%	18%	224	13.8	9.6
1999/2000	533	100.0%	3.08	39%	17%	227	13.9	10.0
1998/1999	446	100.0%	3.13	41%	20%	228	14.2	9.9
1997/1998	402	100.0%	3.12	43%	19%	230	14.2	9.8
1996/1997	398	100.0%	3.09	37%	20%	230	14.3	10.8
1995/1996	424	100.0%	3.13	41%	21%	231	14.6	10.5
1994/1995	418	100.0%	3.10	40%	17%	234	14.6	11.4
1993/1994	344	100.0%	3.12	40%	19%	237	14.9	12.0

Science/Math



Profile of Bachelor Degree Recipients Majoring in Science and Math: 2002/2003

Student Characteristics	N	%	GPA Mean	Academic Profile		Units Mean	Time-to-Degree	
				% GPA 3.0 - 3.5	% GPA ≥ 3.5		Freshmen Mean	C.C. Transfer Mean
Gender								
Male	440	44.3%	3.12	36.8%	24.5%	212	13.4	8.6
Female	554	55.7%	3.12	38.1%	22.6%	212	13.1	8.5
Ethnicity								
African Am.	12	1.2%	2.89	41.7%	8.3%	211	15.4	8.0
Asian	322	32.4%	3.08	34.8%	22.4%	213	13.2	7.9
Mexican Am.	62	6.2%	2.95	40.3%	11.3%	211	14.2	8.9
Filipino	60	6.0%	2.92	28.3%	11.7%	214	13.7	9.0
Latino	19	1.9%	3.06	21.1%	31.6%	216	14.4	9.2
Native Am.	9	0.9%	3.36	55.6%	33.3%	210	12.3	9.3
Caucasian	378	38.0%	3.21	39.2%	28.8%	212	13.0	8.5
Other	132	13.3%	3.13	43.2%	21.2%	210	13.0	8.9
College								
Revelle	348	35.0%	3.15	34.8%	27.6%	214	13.1	9.0
Muir	201	20.2%	3.19	44.3%	24.4%	213	13.1	8.8
Marshall	160	16.1%	3.06	38.1%	16.9%	207	13.4	8.2
Warren	216	21.7%	3.08	35.6%	22.7%	211	13.4	8.2
Roosevelt	69	6.9%	3.02	36.2%	17.4%	214	13.5	8.8
School Type								
High School	734	73.8%	3.18	42.4%	25.7%	213	13.2	--
2yr College	247	24.8%	2.92	23.1%	15.8%	208	--	8.6
4yr College/Univ.	11	1.1%	3.35	36.4%	45.5%	213	--	--
Unknown	2	0.2%	2.75	50.0%	0.0%	191	--	--
Total Science/Math	994	100.0%	3.12	37.5%	23.4%	212	13.2	8.6

More than one-half of all science/math degrees were awarded to females.

At just over one-third (35%), the largest proportion of bachelor degree recipients majoring in science/math were enrolled at Revelle College.

Approximately 61% of science/math majors graduated with a 'B' or better GPA; twenty-three percent graduated with a GPA of 'B+' or better.

Bachelor Degrees in Science and Math: Trends Profile - 1993/1994 to 2001/2002

Award Year	N	%	GPA Mean	% GPA 3.0 - 3.5	% GPA ≥ 3.5	Units Mean	Freshmen Mean	C.C. Transfer Mean
2001/2002	957	100.0%	3.10	39%	22%	211	13.3	9.1
2000/2001	1,029	100.0%	3.10	36%	23%	211	13.1	9.1
1999/2000	1,102	100.0%	3.09	37%	23%	211	13.4	9.1
1998/1999	1,160	100.0%	3.10	36%	22%	208	13.3	8.6
1997/1998	1,040	100.0%	3.11	39%	22%	210	13.4	8.7
1996/1997	1,122	100.0%	3.09	37%	21%	210	13.3	9.1
1995/1996	1,030	100.0%	3.09	39%	21%	209	13.3	9.4
1994/1995	902	100.0%	3.07	37%	19%	208	13.4	10.0
1993/1994	967	100.0%	3.06	37%	18%	209	13.9	10.4

Social Science

Profile of Bachelor Degree Recipients Majoring in the Social Sciences: 2002/2003



The majority of social science degree recipients were female (63%).

At graduation, the average social science degree recipient had earned a GPA of 3.10; 62% had earned a GPA of 'B' or better, respectively.

A record high number of bachelor of social science degrees was awarded in 2002/2003.

Student Characteristics	N	%	GPA Mean	Academic Profile		Units Mean	Time-to-Degree	
				% GPA 3.0 - 3.5	% GPA ≥ 3.5		Freshmen Mean	C.C. Transfer Mean
Gender								
Male	760	37.1%	3.02	35.9%	16.8%	196	13.5	7.7
Female	1,291	62.9%	3.14	45.8%	20.4%	199	12.8	7.4
Ethnicity								
African Am.	46	2.2%	2.93	37.0%	6.5%	201	13.4	8.3
Asian	550	26.8%	3.03	42.5%	11.6%	197	13.0	7.6
Mexican Am.	179	8.7%	2.92	31.3%	13.4%	197	14.2	8.0
Filipino	94	4.6%	2.94	38.3%	8.5%	203	13.9	7.6
Latino	50	2.4%	3.05	48.0%	16.0%	202	13.7	8.2
Native Am.	11	0.5%	3.18	45.5%	27.3%	207	14.7	11.0
Caucasian	845	41.2%	3.20	44.6%	25.3%	197	12.6	7.3
Other	276	13.5%	3.15	41.7%	24.3%	200	13.0	7.3
College								
Revelle	281	13.7%	3.00	40.2%	15.7%	208	13.5	9.3
Muir	466	22.7%	3.15	40.8%	22.3%	196	12.9	7.3
Marshall	557	27.2%	3.09	46.3%	15.1%	195	12.8	7.6
Warren	423	20.6%	3.08	37.6%	20.3%	196	13.2	7.2
Roosevelt	324	15.8%	3.15	44.4%	22.5%	201	12.9	7.7
School Type								
High School	1,452	70.8%	3.13	44.2%	20.3%	199	13.0	--
2yr College	552	26.9%	3.02	37.7%	15.4%	195	--	7.5
4yr College/Univ.	35	1.7%	3.19	40.0%	25.7%	195	--	--
Unknown	12	0.6%	2.57	0.0%	16.7%	206	--	--
Total Social Sci.	2,051	100.0%	3.10	42.1%	19.1%	198	13.0	7.5

Bachelor Degrees in Social Sciences: Trends Profile - 1993/1994 to 2001/2002

Award Year	N	%	GPA Mean	% GPA 3.0 - 3.5	% GPA ≥ 3.5	Units Mean	Freshmen Mean	C.C. Transfer Mean
2001/2002	1,916	100.0%	3.09	45%	17%	197	13.0	7.7
2000/2001	1,649	100.0%	3.11	44%	18%	197	12.8	7.8
1999/2000	1,494	100.0%	3.09	42%	18%	196	13.2	8.1
1998/1999	1,494	100.0%	3.08	42%	17%	195	12.9	7.9
1997/1998	1,362	100.0%	3.06	44%	15%	197	12.9	7.9
1996/1997	1,320	100.0%	3.09	40%	19%	196	13.1	7.8
1995/1996	1,388	100.0%	3.09	43%	18%	197	13.1	8.1
1994/1995	1,429	100.0%	3.07	42%	17%	198	13.2	8.7
1993/1994	1,597	100.0%	3.07	40%	19%	196	13.2	8.4

The *Degrees Conferred* Report is an annual publication of the Office of Student Research and Information, Student Affairs, (858) 534-2382. This document is also available on the World Wide Web: <http://studentresearch.ucsd.edu>

