



University of California,
San Diego

2003 -
2004

DEGREES Conferred

Profile
of
Degree
Recipients

Office of Student
Research & Information,
Student Affairs
studentresearch.ucsd.edu

DEGREES CONFERRED

Profile of Degree Recipients

2003 - 2004

University of California, San Diego

William B. Armstrong, Ph.D.
Director

Heidi M. Carty, Ph.D.
Principal Research Analyst

Greg Martin
Programmer Analyst

Jason R. Thornton
Research Analyst

Student Research & Information
Student Affairs
University of California, San Diego
La Jolla, CA 92093-0088
<http://studentresearch.ucsd.edu>

- Reaching a record high, UC San Diego awarded a combined total of 5,509 undergraduate, graduate and medical degrees during the 2003/2004 academic year.
- Of the 4,136 undergraduate degrees awarded in 2003/2004, the largest percentage (49%; 2,022) were granted to social science majors.
- While the majority (55%) of undergraduate degrees were awarded to females, the majority of graduate (M.A./M.S., 57%; Ph.D., 62%) and medical degrees (59%) were awarded to males.
- More than one-half (53%) of all first-time freshmen who earned a bachelor's degree at UCSD did so in four years; over two-thirds (70%) graduated within 13 quarters or just over four years, respectively.
- On average, transfer students took three years to complete their bachelor degree requirements at UCSD, over three-quarters (78%) graduated within nine quarters.
- Sixty-four percent of the 2003/2004 undergraduate degree recipients graduated with a grade point average of 3.0 ('B') or better; roughly one in four (23%) graduated with a grade point average of 3.5 ('B+') or better.
- Reaching a record high, the average GPA for all undergraduate degree recipients in 2003/2004 was 3.15. For first-time freshmen, a record high GPA of 3.19 was achieved. And, a record high of 3.06 was achieved by transfer students.
- The majority of arts, humanities, science/math and social science degrees were awarded to females, while the majority of engineering degrees were awarded to males.

All Degree Types



UC SAN DIEGO AWARDED A TOTAL OF 5,398 UNDERGRADUATE, GRADUATE AND MEDICAL DEGREES DURING THE 2003/2004 ACADEMIC YEAR.

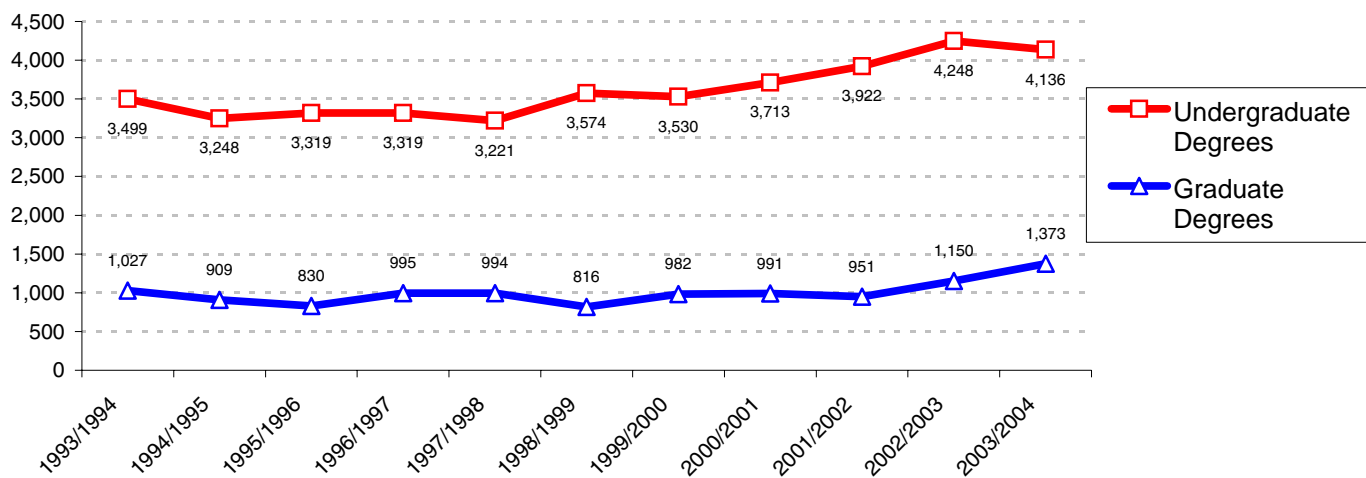
Degrees by the Numbers

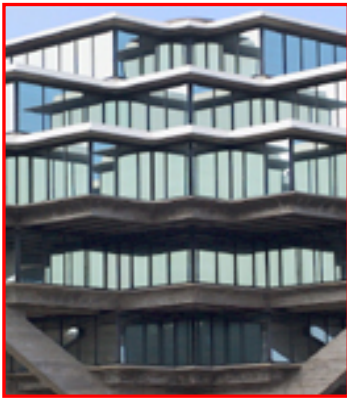


For the fourth consecutive year, a record high number of degrees were awarded by UCSD. The number of PhD's and Master's degrees hit a peak high in 2003/2004.

Award Year	Bachelor	Master	Candidate in Phil.	Doctor of Philosophy	Doctor of Medicine	Total
2003/2004	4,136	785	161	327	100	5,509
2002/2003	4,248	573	170	279	128	5,398
2001/2002	3,922	495	117	278	61	4,873
2000/2001	3,713	423	147	285	136	4,704
1999/2000	3,530	408	150	294	130	4,512
1998/1999	3,574	358	120	303	35	4,390
1997/1998	3,221	404	178	310	102	4,215
1996/1997	3,319	364	148	281	202	4,314
1995/1996	3,319	384	149	259	38	4,149
1994/1995	3,248	392	137	274	106	4,157
1993/1994	3,499	459	143	285	140	4,526

Trends in Degrees Awarded



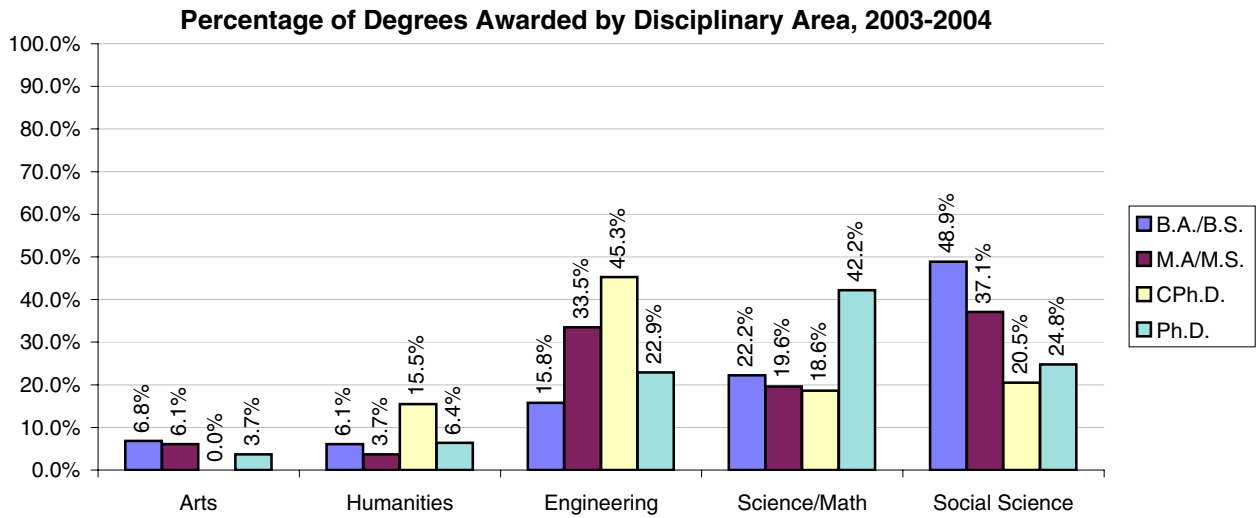


Student Characteristics: All Degree Types

Background Characteristics	B.A./B.S. N=4,136	M.A./M.S. N=785	CPh.D. N=161	Ph.D. N=327	M.D. N=100
Gender					
Female	54.9%	42.8%	28.0%	38.2%	41.0%
Male	45.1%	57.2%	72.0%	61.8%	59.0%
Ethnicity					
African Am.	1.2%	1.0%	1.9%	1.2%	0.0%
Asian	30.9%	14.9%	5.0%	6.7%	29.0%
Mexican Am.	7.4%	3.4%	1.9%	3.7%	6.0%
Filipino	4.7%	2.4%	1.2%	1.2%	0.0%
Latino	2.1%	1.8%	2.5%	3.1%	2.0%
Native Am.	0.4%	0.5%	0.6%	0.3%	1.0%
Caucasian	40.4%	49.7%	42.9%	54.4%	53.0%
Other	13.1%	26.2%	44.1%	29.4%	9.0%
Disciplinary Area					
Arts	6.8%	6.1%	0.0%	3.7%	0.0%
Humanities	6.1%	3.7%	15.5%	6.4%	0.0%
Engineering	15.8%	33.5%	45.3%	22.9%	0.0%
Science/Math	22.2%	19.6%	18.6%	42.2%	100.0%
Social Science	48.9%	37.1%	20.5%	24.8%	0.0%
Dbl/Special	0.1%	0.0%	0.0%	0.0%	0.0%
College					
Revelle	17.3%	NA	NA	NA	NA
John Muir	22.1%	NA	NA	NA	NA
Thurgood Marshall	22.5%	NA	NA	NA	NA
Earl Warren	24.4%	NA	NA	NA	NA
Eleanor Roosevelt	13.6%	NA	NA	NA	NA

The majority of bachelor's degrees were awarded to females (55%).

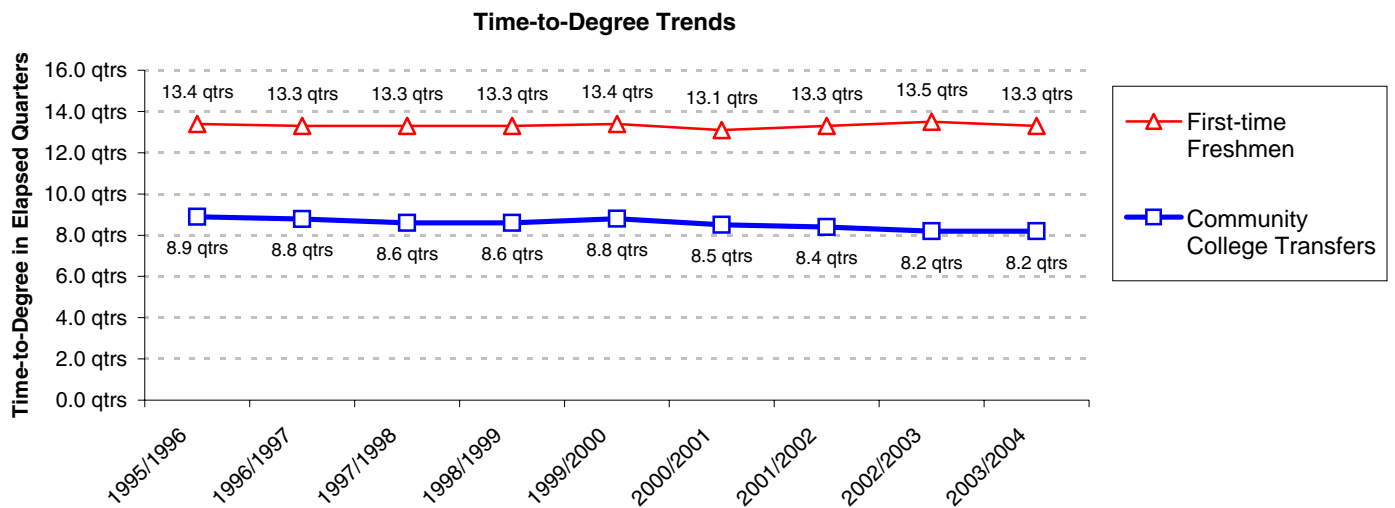
Almost half (49%) of all bachelor's degrees were awarded to social science majors. Just over one-third of all Master's degrees were awarded to social science (37%) and engineering (34%) majors, while the largest number of degree recipients earning PhD's were science/math majors.



Trends in Time-to-Degree¹: Academic Performance

Academic Performance	Award Year								
	'95/'96	'96/'97	'97/'98	'98/'99	'99/'00	'00/'01	'01/'02	'02/'03	'03/'04
Bachelor Degree Recipients Who Entered From High School									
Average Time-to-Degree	13.4	13.3	13.3	13.3	13.4	13.1	13.3	13.5	13.3
Median Time-to-Degree	12.0	13.0	12.0	12.0	13.0	12.0	12.0	12.0	12.0
Average Units	205	204	204	204	205	205	205	207	209
GPA at Graduation	3.17	3.15	3.14	3.14	3.14	3.16	3.14	3.16	3.19
% with GPA = 3.0 - 3.5	46%	43%	44%	42%	42%	45%	45%	43%	43%
% with GPA \geq 3.5	22%	22%	21%	22%	22%	22%	20%	23%	25%
Bachelor Degree Recipients Who Entered From a Two-Year Community College									
Average Time-to-Degree	8.9	8.8	8.6	8.6	8.8	8.5	8.4	8.2	8.2
Median Time-to-Degree	9.0	9.0	9.0	8.0	8.0	8.0	7.0	6.0	6.0
Average Units	208	210	209	207	207	207	205	206	205
GPA at Graduation	3.03	3.01	3.03	3.04	3.01	3.05	3.03	3.04	3.06
% with GPA = 3.0 - 3.5	36%	35%	37%	36%	34%	37%	40%	36%	37%
% with GPA \geq 3.5	18%	17%	17%	18%	17%	16%	15%	17%	20%
Total Bachelor Degree Recipients									
Average Units	206	206	206	205	206	206	205	207	208
GPA at Graduation	3.11	3.10	3.10	3.11	3.10	3.12	3.11	3.12	3.15
% with GPA = 3.0 - 3.5	42%	40%	41%	41%	40%	42%	43%	41%	41%
% with GPA \geq 3.5	20%	20%	20%	20%	20%	20%	19%	21%	23%

¹Time-to-Degree is reported in elapsed quarters from first enrollment date to graduation. Only the records of students who enter UCSD in the Fall quarter are included in time-to-degree calculations. An academic year is defined as three quarters; twelve quarters equal four years. Summer degrees are combined with Fall degrees and represent one quarter.



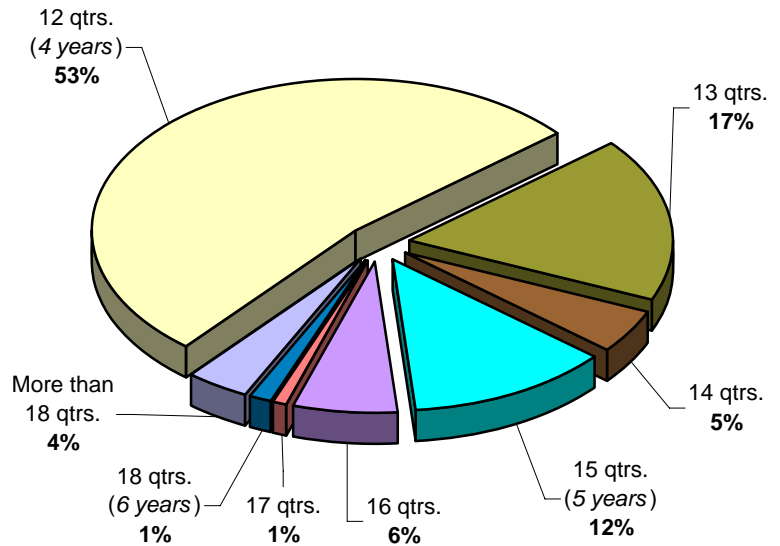
Nominal Time-to-Degree

The majority (53%) of first-time freshmen earning a bachelor's degree at UCSD did so in four years; over two-thirds (70%) graduated within 13 quarters or just over four years.

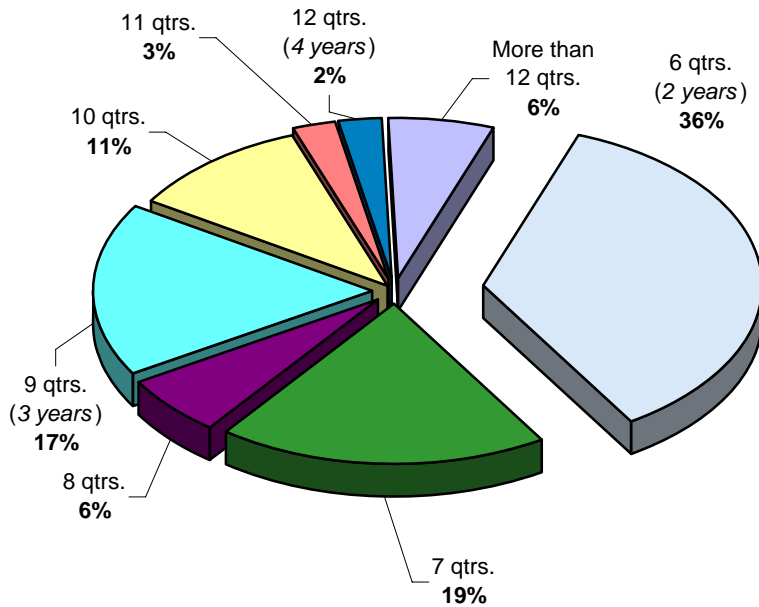
First-Time Freshmen

Cumulative Frequency:

53% graduated within 12 qtrs.
 70% graduated within 13 qtrs.
 75% graduated within 14 qtrs.
 87% graduated within 15 qtrs.
 94% graduated within 16 qtrs.
 95% graduated within 17 qtrs.
 96% graduated within 18 qtrs.



On average, transfer students took three years to complete their bachelor degree requirements at UCSD. Over three-quarters (78%) graduated within three years (9 quarters), and one-third graduated within two years (6 quarters).



Community College Transfer

Cumulative Frequency:

33% graduated within 6 qtrs.
 55% graduated within 7 qtrs.
 61% graduated within 8 qtrs.
 78% graduated within 9 qtrs.
 89% graduated within 10 qtrs.
 91% graduated within 11 qtrs.
 94% graduated within 12 qtrs.



Characteristics of Bachelor Degree Recipients: 2003/2004

Student Characteristics	N	%	Academic Profile				Time-to-Degree	
			GPA Mean	% 3.0 - 3.5	% GPA ≥ 3.5	Units Mean	Freshmen Mean	C.C. Transfer ² Mean
Gender								
Female	2,272	54.9%	3.17	41.5%	25.0%	206	13.0	7.7
Male	1,864	45.1%	3.11	39.6%	21.4%	210	13.6	8.5
Ethnicity								
African Am.	50	1.2%	2.99	32.0%	20.0%	204	14.0	7.8
Asian	1,276	30.9%	3.09	39.7%	17.8%	210	13.3	8.0
Mexican Am.	304	7.4%	3.02	37.8%	15.5%	206	14.1	8.2
Filipino	196	4.7%	2.96	31.1%	13.3%	208	13.7	9.4
Latino	85	2.1%	3.05	40.0%	15.3%	206	13.6	8.1
Native Am.	15	0.4%	3.19	33.3%	33.3%	208	13.6	7.5
Caucasian	1,669	40.4%	3.25	43.5%	30.5%	207	13.0	8.1
Other	541	13.1%	3.15	40.3%	24.0%	209	13.2	8.0
Disciplinary Area								
Arts	281	6.8%	3.34	43.8%	38.4%	211	13.8	8.0
Humanities	253	6.1%	3.22	46.6%	27.7%	204	13.1	7.7
Engineering	654	15.8%	3.10	40.4%	19.0%	228	13.9	10.0
Science/Math	920	22.2%	3.11	35.3%	23.8%	214	13.3	8.5
Social Science	2,022	48.9%	3.14	42.0%	22.0%	199	13.0	7.3
DbI/Special	6	0.1%	3.44	50.0%	33.3%	215	12.0	6.0
College								
Revelle	715	17.3%	3.08	38.6%	18.3%	218	13.3	8.8
Muir	916	22.1%	3.21	42.2%	27.7%	206	13.1	7.9
Marshall	932	22.5%	3.12	41.2%	20.5%	202	13.1	7.8
Warren	1,009	24.4%	3.14	39.0%	25.1%	209	13.4	8.1
Roosevelt	564	13.6%	3.18	42.7%	24.5%	207	13.4	8.6
School Type								
High School	2,791	67.5%	3.19	42.6%	25.3%	209	13.3	--
2yr College	1,253	30.3%	3.06	36.6%	19.4%	205	--	8.1
4yr College/Univ.	77	1.9%	3.20	41.6%	24.7%	208	--	--
Unknown	15	0.4%	2.67	20.0%	0.0%	211	--	--
Total Population	4,136	100.0%	3.15	40.7%	23.4%	208	13.3	8.1

Time-to-degree for bachelor degree recipients tends to vary by disciplinary area. In general, engineering majors require more time to complete their degree requirements compared to non-engineering

On average, first-time freshmen take just over four years (13 quarters) to graduate. Community College transfer students tend to graduate in just under three years or 8 quarters.

²For Transfer students, time-to-degree is calculated only for those students who matriculate from a two-year community college (C.C.). The typical community college transfer student enters UCSD with 90 units of transferable academic credit.

Approximately 64% of the undergraduate degree recipients graduated with a grade point average of 3.0 ('B') or better. One in four graduated with a grade point average of 'B+' or better and an average of 208 units, respectively.

Profile of Bachelor Degree Recipients Majoring in the Arts: 2003/2004



Muir College awarded the largest number of bachelor's degrees in arts compared to the other four colleges.

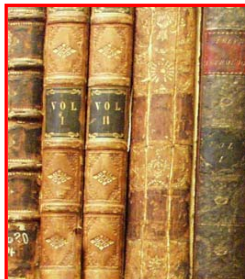
Relative to other disciplinary areas, a larger percentage (82%) of arts majors graduated with a GPA of 'B' or better. The average GPA was 3.34, respectively.

Student Characteristics	N	%	Academic Profile			Time-to-Degree		
			GPA Mean	% GPA 3.0 - 3.5	% GPA ≥ 3.5	Units Mean	Freshmen C.C. Transfer Mean	
Gender								
Female	162	57.7%	3.37	50.0%	36.4%	209	13.8	7.7
Male	119	42.3%	3.31	35.3%	41.2%	212	13.9	8.5
Ethnicity								
African Am.	5	1.8%	3.44	-- *	-- *	223	12.0	8.0
Asian	96	34.2%	3.23	50.0%	22.9%	207	13.8	7.5
Mexican Am.	12	4.3%	3.24	50.0%	25.0%	207	13.9	8.0
Filipino	12	4.3%	3.23	41.7%	25.0%	208	14.3	11.0
Latino	3	1.1%	3.38	-- *	-- *	214	15.0	7.5
Native Am.	2	0.7%	3.37	-- *	-- *	188	12.0	--
Caucasian	116	41.3%	3.45	37.1%	52.6%	211	13.8	8.1
Other	35	12.5%	3.36	45.7%	40.0%	220	14.1	7.8
College								
Revelle	27	9.6%	3.18	37.0%	25.9%	234	14.3	10.5
Muir	91	32.4%	3.37	42.9%	44.0%	208	13.7	7.9
Marshall	51	18.1%	3.34	54.9%	29.4%	209	15.0	7.7
Warren	62	22.1%	3.40	41.9%	46.8%	206	13.8	7.7
Roosevelt	50	17.8%	3.32	40.0%	34.0%	211	13.2	9.4
School Type								
High School	151	53.7%	3.31	42.4%	37.1%	210	13.8	--
2yr College	125	44.5%	3.38	44.8%	40.8%	211	--	8.0
4yr College/Univ.	3	1.1%	3.25	-- *	-- *	208	--	--
Unknown	2	0.7%	3.37	-- *	-- *	209	--	--
Total Arts	281	100.0%	3.34	43.8%	38.4%	211	13.8	8.0

* Five or fewer cases.

Bachelor Degrees in the Arts: Trends Profile - 1993/1994 to 2002/2003

Student Characteristics	N	%	Academic Profile			Time-to-Degree		
			GPA Mean	% GPA 3.0 - 3.5	% GPA ≥ 3.5	Units Mean	Freshmen C.C. Transfer Mean	
Award Year								
2002/2003	300	100.0%	3.27	52%	26%	207	13.9	8.1
2001/2002	236	100.0%	3.25	52%	25%	202	13.6	8.5
2000/2001	214	100.0%	3.30	51%	31%	206	13.5	8.1
1999/2000	147	100.0%	3.26	47%	28%	205	13.4	8.4
1998/1999	156	100.0%	3.26	60%	23%	204	13.5	7.7
1997/1998	123	100.0%	3.28	56%	28%	210	13.6	8.4
1996/1997	168	100.0%	3.27	51%	29%	210	13.6	8.9
1995/1996	161	100.0%	3.25	45%	30%	211	13.2	9.4
1994/1995	145	100.0%	3.28	52%	27%	207	13.7	9.7
1993/1994	188	100.0%	3.22	50%	25%	210	14.1	9.2



Profile of Bachelor Degree Recipients Majoring in the Humanities: 2003/2004

Student Characteristics	N	%	Academic Profile				Time-to-Degree	
			GPA Mean	% GPA 3.0 - 3.5	% GPA ≥ 3.5	Units Mean	Freshmen Mean	C.C. Transfer Mean
Gender								
Female	146	57.7%	3.25	43.8%	31.5%	205	12.6	8.4
Male	107	42.3%	3.18	50.5%	22.4%	203	13.9	7.1
Ethnicity								
African Am.	2	0.8%	3.23	-- *	-- *	210	15.0	5.0
Asian	26	10.3%	3.04	46.2%	15.4%	208	12.8	10.8
Mexican Am.	33	13.0%	3.10	39.4%	18.2%	204	14.0	7.8
Filipino	8	3.2%	3.20	62.5%	12.5%	221	13.0	6.0
Latino	11	4.3%	3.14	54.5%	18.2%	191	13.8	7.8
Native Am.	0	0.0%	--	-- *	-- *	--	--	--
Caucasian	146	57.7%	3.29	46.6%	33.6%	205	12.9	7.3
Other	27	10.7%	3.20	44.4%	29.6%	199	12.7	8.7
College								
Revelle	21	8.3%	3.04	47.6%	19.0%	227	13.6	--
Muir	74	29.2%	3.24	47.3%	25.7%	201	12.7	7.8
Marshall	69	27.3%	3.25	47.8%	31.9%	201	12.7	8.0
Warren	41	16.2%	3.17	46.3%	24.4%	203	13.4	6.8
Roosevelt	48	19.0%	3.28	43.8%	31.3%	207	13.4	8.1
School Type								
High School	153	60.5%	3.28	48.4%	32.0%	208	13.1	--
2yr College	88	34.8%	3.15	46.6%	21.6%	199	--	7.7
4yr College/Univ.	7	2.8%	3.26	42.9%	28.6%	194	--	--
Unknown	5	2.0%	2.67	-- *	-- *	217	--	--
Total Humanities	253	100.0%	3.22	46.6%	27.7%	204	13.1	7.7

* Five or fewer cases.

Bachelor Degrees in the Humanities: Trends Profile - 1993/1994 to 2002/2003

Student Characteristics	N	%	Academic Profile				Time-to-Degree	
			GPA Mean	% GPA 3.0 - 3.5	% GPA ≥ 3.5	Units Mean	Freshmen Mean	C.C. Transfer Mean
Award Year								
2002/2003	226	100.0%	3.17	43%	24%	205	13.4	8.0
2001/2002	244	100.0%	3.16	43%	22%	203	13.7	8.3
2000/2001	273	100.0%	3.14	48%	19%	202	13.6	7.6
1999/2000	256	100.0%	3.17	44%	24%	201	13.5	8.6
1998/1999	312	100.0%	3.19	45%	27%	201	13.4	9.2
1997/1998	291	100.0%	3.18	44%	26%	202	13.5	8.6
1996/1997	307	100.0%	3.15	48%	19%	201	12.9	8.7
1995/1996	305	100.0%	3.15	49%	21%	202	13.3	8.4
1994/1995	346	100.0%	3.18	43%	26%	202	13.0	9.3
1993/1994	376	100.0%	3.17	43%	22%	200	13.3	7.8

The majority (58%) of all students earning a bachelor's degree in humanities were female.

Muir College awarded the largest number of humanities degrees followed by Thurgood Marshall College.

Almost three-quarters (74%) of humanities majors graduated with a 'B' or better grade point average; the mean GPA was 3.22, respectively.



Profile of Bachelor Degree Recipients Majoring in Engineering: 2003/2004

Student Characteristics	N	%	Academic Profile				Time-to-Degree	
			GPA Mean	% GPA 3.0 - 3.5	% GPA ≥ 3.5	Units Mean	Freshmen Mean	C.C. Transfer Mean
Gender								
Female	149	22.8%	3.13	39.6%	20.1%	231	13.8	9.2
Male	505	77.2%	3.09	40.6%	18.6%	227	13.9	10.3
Ethnicity								
African Am.	6	0.9%	2.68	16.7%	0.0%	224	15.5	13.0
Asian	278	42.5%	3.10	37.8%	19.8%	227	13.5	9.3
Mexican Am.	28	4.3%	2.87	28.6%	7.1%	228	15.9	11.3
Filipino	28	4.3%	2.89	32.1%	7.1%	232	14.7	12.9
Latino	10	1.5%	2.96	50.0%	10.0%	239	12.7	11.5
Native Am.	2	0.3%	3.08	-- *	-- *	229	15.0	--
Caucasian	215	32.9%	3.16	45.1%	20.9%	228	14.0	10.6
Other	87	13.3%	3.14	43.7%	21.8%	228	13.6	9.8
College								
Revelle	123	18.8%	3.06	40.7%	16.3%	238	14.1	10.1
Muir	99	15.1%	3.15	47.5%	23.2%	228	14.0	9.6
Marshall	110	16.8%	3.04	38.2%	13.6%	227	13.8	9.6
Warren	291	44.5%	3.13	39.2%	21.3%	223	13.5	10.3
Roosevelt	31	4.7%	3.01	35.5%	12.9%	238	15.5	10.3
School Type								
High School	430	65.7%	3.14	42.6%	21.6%	226	13.9	--
2yr College	210	32.1%	3.01	35.7%	13.3%	230	--	10.0
4yr College/Univ.	13	2.0%	3.16	46.2%	23.1%	232	--	--
Unknown	1	0.2%	2.20	-- *	-- *	239	--	--
Total Engineering	654	100.0%	3.10	40.4%	19.0%	228	13.9	10.0

* Five or fewer cases.

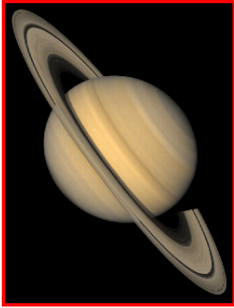
Bachelor Degrees in Engineering: Trends Profile - 1993/1994 to 2002/2003

Student Characteristics	N	%	Academic Profile				Time-to-Degree	
			GPA Mean	% GPA 3.0 - 3.5	% GPA ≥ 3.5	Units Mean	Freshmen Mean	C.C. Transfer Mean
Award Year								
2002/2003	674	100.0%	3.11	38%	21%	227	13.9	9.8
2001/2002	563	100.0%	3.08	42%	16%	225	13.9	9.8
2000/2001	540	100.0%	3.10	43%	18%	224	13.8	9.6
1999/2000	533	100.0%	3.08	39%	17%	227	13.9	10.0
1998/1999	446	100.0%	3.13	41%	20%	228	14.2	9.9
1997/1998	402	100.0%	3.12	43%	19%	230	14.2	9.8
1996/1997	398	100.0%	3.09	37%	20%	230	14.3	10.8
1995/1996	424	100.0%	3.13	41%	21%	231	14.6	10.5
1994/1995	418	100.0%	3.10	40%	17%	234	14.6	11.4
1993/1994	344	100.0%	3.12	40%	19%	237	14.9	12.0

The majority (77%) of engineering degrees were awarded to males.

Warren College continues to award the largest proportion (45%) of bachelor's degrees in engineering.

Fifty-nine percent of engineering majors graduated with a GPA of 'B' or higher; the average GPA for graduating engineering students was 3.10, respectively.



Profile of Bachelor Degree Recipients Majoring in Science and Math: 2003/2004

Student Characteristics	N	%	Academic Profile				Time-to-Degree	
			GPA Mean	% GPA 3.0 - 3.5	% GPA ≥ 3.5	Units Mean	Freshmen Mean	C.C. Transfer Mean
Gender								
Female	530	57.6%	3.10	37.0%	21.7%	214	13.2	8.0
Male	390	42.4%	3.12	33.1%	26.7%	214	13.5	9.1
Ethnicity								
African Am.	7	0.8%	2.98	28.6%	14.3%	198	11.5	7.0
Asian	292	31.7%	3.07	33.2%	21.2%	214	13.2	9.0
Mexican Am.	66	7.2%	2.96	33.3%	13.6%	212	14.0	7.8
Filipino	61	6.6%	3.00	27.9%	19.7%	209	13.7	8.0
Latino	15	1.6%	3.10	20.0%	26.7%	224	14.3	8.0
Native Am.	3	0.3%	3.22	-- *	-- *	222	14.0	10.0
Caucasian	355	38.6%	3.21	40.8%	28.5%	214	13.1	8.4
Other	121	13.2%	3.06	31.4%	24.0%	216	13.4	8.6
College								
Revelle	311	33.8%	3.13	36.3%	24.4%	216	13.0	8.3
Muir	185	20.1%	3.16	36.8%	26.5%	216	13.2	8.8
Marshall	164	17.8%	3.04	32.9%	18.9%	206	13.3	8.7
Warren	194	21.1%	3.06	32.0%	23.7%	214	13.8	8.4
Roosevelt	66	7.2%	3.20	42.4%	25.8%	219	13.7	8.6
School Type								
High School	677	73.6%	3.18	39.4%	26.1%	215	13.3	--
2yr College	225	24.5%	2.90	22.7%	17.3%	210	--	8.5
4yr College/Univ.	17	1.8%	3.13	41.2%	17.6%	221	--	--
Unknown	1	0.1%	2.69	-- *	-- *	192	--	--
Total Science/Math	920	100.0%	3.11	35.3%	23.8%	214	13.3	8.5

* Five or fewer cases.

Bachelor Degrees in Science and Math: Trends Profile - 1993/1994 to 2002/2003

Student Characteristics	N	%	Academic Profile				Time-to-Degree	
			GPA Mean	% GPA 3.0 - 3.5	% GPA ≥ 3.5	Units Mean	Freshmen Mean	C.C. Transfer Mean
Award Year								
2002/2003	994	100.0%	3.12	38%	23%	212	13.2	8.6
2001/2002	957	100.0%	3.10	39%	22%	211	13.3	9.1
2000/2001	1,029	100.0%	3.10	36%	23%	211	13.1	9.1
1999/2000	1,102	100.0%	3.09	37%	23%	211	13.4	9.1
1998/1999	1,160	100.0%	3.10	36%	22%	208	13.3	8.6
1997/1998	1,040	100.0%	3.11	39%	22%	210	13.4	8.7
1996/1997	1,122	100.0%	3.09	37%	21%	210	13.3	9.1
1995/1996	1,030	100.0%	3.09	39%	21%	209	13.3	9.4
1994/1995	902	100.0%	3.07	37%	19%	208	13.4	10.0
1993/1994	967	100.0%	3.06	37%	18%	209	13.9	10.4

More than one-half of all science/math degrees were awarded to females.

At just over one-third (34%), the largest proportion of bachelor degree recipients majoring in science/math were enrolled at Revelle College.

Approximately 59% of science/math majors graduated with a 'B' or better GPA; twenty-four percent graduated with a GPA of 'B+' or better.

Profile of Bachelor Degree Recipients Majoring in the Social Sciences: 2003/2004



The majority of social science degree recipients were female (64%).

At graduation, the average social science degree recipient had earned a GPA of 3.14; 64% had earned a GPA of 'B' or better, respectively.

Student Characteristics	N	%	Academic Profile				Time-to-Degree	
			GPA Mean	% GPA 3.0 - 3.5	% GPA ≥ 3.5	Units Mean	Freshmen Mean	C.C. Transfer Mean
Gender								
Female	1,283	63.5%	3.18	42.4%	24.7%	200	12.8	7.3
Male	739	36.5%	3.08	41.3%	17.2%	198	13.3	7.3
Ethnicity								
African Am.	29	1.4%	2.93	31.0%	17.2%	197	14.5	7.7
Asian	584	28.9%	3.06	42.0%	14.4%	201	13.2	6.7
Mexican Am.	164	8.1%	3.03	39.6%	16.5%	199	13.8	8.0
Filipino	87	4.3%	2.90	28.7%	9.2%	199	13.4	8.8
Latino	46	2.3%	3.01	39.1%	10.9%	196	13.3	7.0
Native Am.	8	0.4%	3.16	25.0%	37.5%	202	13.3	7.0
Caucasian	834	41.2%	3.25	44.6%	30.2%	198	12.6	7.6
Other	270	13.4%	3.15	41.9%	22.2%	200	12.9	7.0
College								
Revelle	229	11.3%	3.01	40.2%	9.6%	208	13.2	7.6
Muir	466	23.0%	3.20	42.3%	26.4%	198	12.8	7.3
Marshall	538	26.6%	3.13	42.2%	20.1%	196	12.9	7.3
Warren	420	20.8%	3.15	41.0%	25.2%	198	13.1	7.0
Roosevelt	369	18.2%	3.16	43.6%	23.0%	202	13.1	8.4
School Type								
High School	1,375	68.0%	3.18	43.5%	23.9%	202	13.0	--
2yr College	604	29.9%	3.06	38.9%	17.5%	195	--	7.3
4yr College/Univ.	37	1.8%	3.23	40.5%	27.0%	196	--	--
Unknown	6	0.3%	2.52	16.7%	0.0%	206	--	--
Total Social Sci.	2,022	100.0%	3.14	42.0%	22.0%	199	13.0	7.3

* Five or fewer cases.

Bachelor Degrees in Social Sciences: Trends Profile - 1993/1994 to 2002/2003

Student Characteristics	N	%	Academic Profile				Time-to-Degree	
			GPA Mean	% GPA 3.0 - 3.5	% GPA ≥ 3.5	Units Mean	Freshmen Mean	C.C. Transfer Mean
Award Year								
2002/2003	2,051	100.0%	3.10	42%	19%	198	13.0	7.5
2001/2002	1,916	100.0%	3.09	45%	17%	197	13.0	7.7
2000/2001	1,649	100.0%	3.11	44%	18%	197	12.8	7.8
1999/2000	1,494	100.0%	3.09	42%	18%	196	13.2	8.1
1998/1999	1,494	100.0%	3.08	42%	17%	195	12.9	7.9
1997/1998	1,362	100.0%	3.06	44%	15%	197	12.9	7.9
1996/1997	1,320	100.0%	3.09	40%	19%	196	13.1	7.8
1995/1996	1,388	100.0%	3.09	43%	18%	197	13.1	8.1
1994/1995	1,429	100.0%	3.07	42%	17%	198	13.2	8.7
1993/1994	1,597	100.0%	3.07	40%	19%	196	13.2	8.4



The *Degrees Conferred* report is an annual publication of the
Office of Student Research & Information,
Student Affairs, 858-534-2382.

This document is also available on the
World Wide Web at:

studentresearch.ucsd.edu