



University of California,  
San Diego

# DEGREES conferred

2004 -  
2005

Profile of  
Degree Recipients

Office of Student Research  
& Information,  
Student Affairs  
[studentresearch.ucsd.edu](http://studentresearch.ucsd.edu)

# DEGREES CONFERRED

## Profile of Degree Recipients

2004 - 2005

## University of California, San Diego

William B. Armstrong, Ph.D.  
Director

Heidi M. Carty, Ph.D.  
Principal Research Analyst

Greg Martin  
Programmer Analyst

Jason R. Thornton  
Research Analyst

Student Research & Information  
Student Affairs  
University of California, San Diego  
La Jolla, CA 92093-0088  
<http://studentresearch.ucsd.edu>

- Reaching a record high for the fifth consecutive year, UC San Diego awarded a combined total of 6,430 undergraduate, graduate and medical degrees during the 2004/2005 academic year.
- Of the 5,043 undergraduate degrees awarded in 2004/2005, the largest percentage (48%; 2,406) were granted to social science majors.
- While the majority (53%) of undergraduate degrees were awarded to females, the majority of graduate (M.A./M.S., 56%; Ph.D., 62%) and medical degrees (54%) were awarded to males.
- More than one-half (53%) of all first-time freshmen who earned a bachelor's degree at UCSD did so in four years; over two-thirds (70%) graduated within 13 quarters or just over four years, respectively.
- On average, transfer students took three years to complete their bachelor degree requirements at UCSD, over three-quarters (78%) graduated within nine quarters.
- Sixty-five percent of the 2004/2005 undergraduate degree recipients graduated with a grade point average of 3.0 ('B') or better; approximately one in four (23%) graduated with a grade point average of 3.5 ('B+') or better.
- The average GPA for all undergraduate degree recipients in 2004/2005 was 3.14. The average GPA for the 2004/2005 group of first-time freshmen graduates was 3.19. The average GPA for the 2004/2005 group of transfer students was 3.06.
- The majority of arts, humanities, science/math and social science degrees were awarded to females, while the majority of engineering degrees were awarded to males.

# All Degree Types



**UC SAN DIEGO AWARDED A TOTAL of 6,430  
UNDERGRADUATE, GRADUATE AND MEDICAL DEGREES  
DURING THE 2004/2005 ACADEMIC YEAR.**

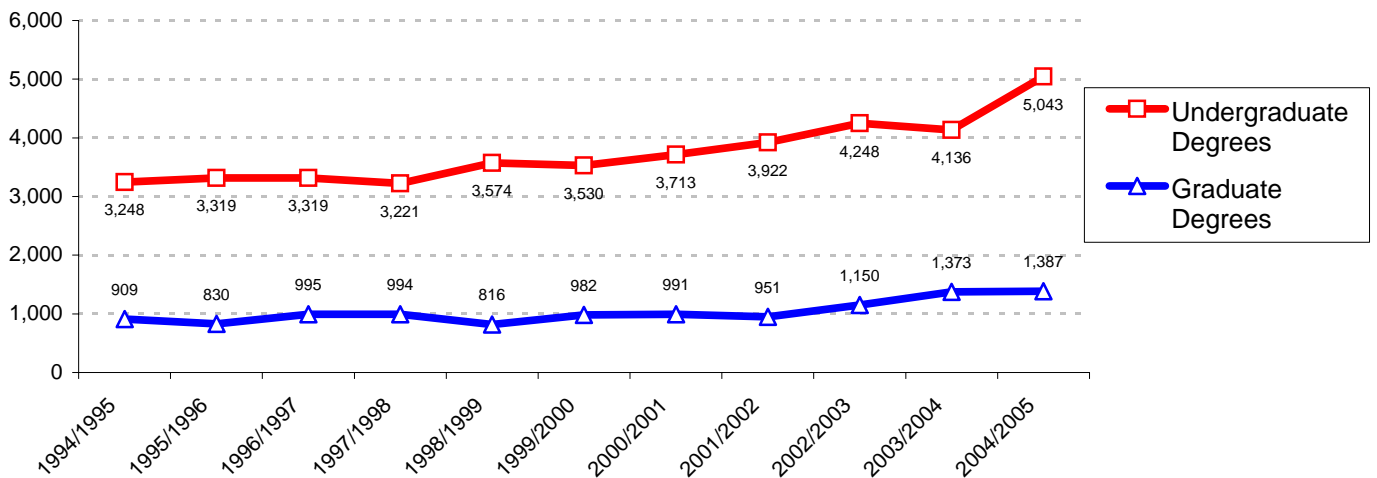
## Degrees by the Numbers

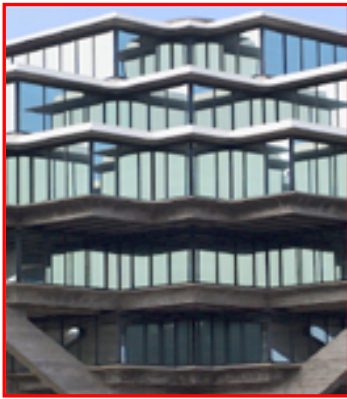


Award Year	Bachelor	Master	Candidate in Phil.	Doctor of Philosophy	Doctor of Medicine	Total
2004/2005	5,043	797	170	303	117	6,430
2003/2004	4,136	785	161	327	100	5,509
2002/2003	4,248	573	170	279	128	5,398
2001/2002	3,922	495	117	278	61	4,873
2000/2001	3,713	423	147	285	136	4,704
1999/2000	3,530	408	150	294	130	4,512
1998/1999	3,574	358	120	303	35	4,390
1997/1998	3,221	404	178	310	102	4,215
1996/1997	3,319	364	148	281	202	4,314
1995/1996	3,319	384	149	259	38	4,149
1994/1995	3,248	392	137	274	106	4,157

Over 6,400 students graduated from UCSD in 2004/2005. At 5,043, a record high number of undergraduates graduated from UCSD in 2004/2005.

**Trends in Degrees Awarded**





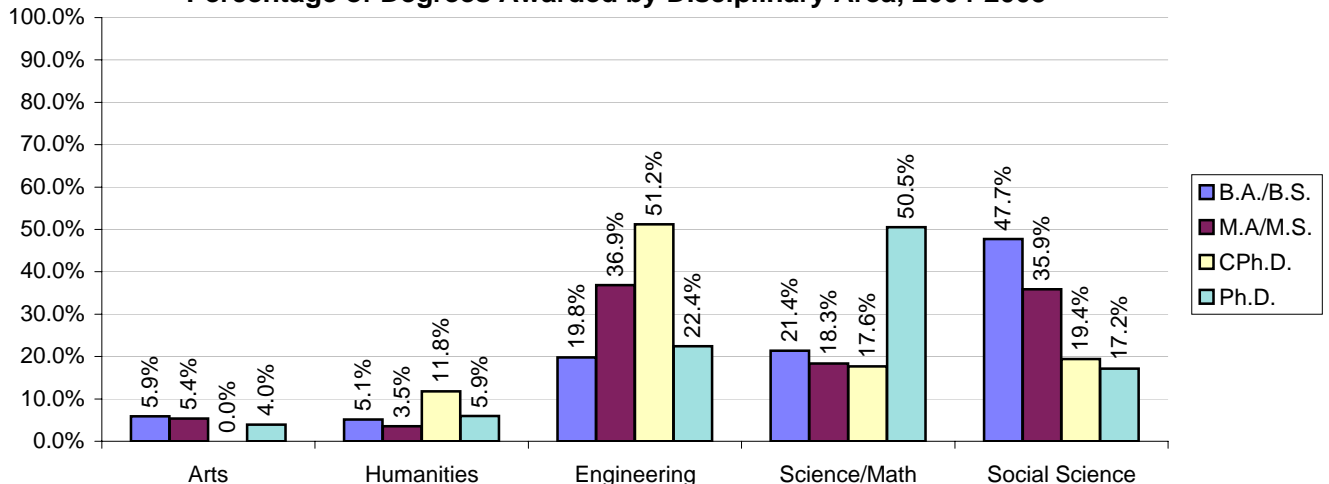
# Student Characteristics: All Degree Types 2004/2005

Background Characteristics	B.A./B.S. N=5,043		M.A./M.S. N=797		CPh.D. N=170		Ph.D. N=303		M.D. N=117	
	N	%	N	%	N	%	N	%	N	%
<b>Gender</b>										
Female	2,658	52.7%	348	43.7%	50	29.4%	115	38.0%	54	46.2%
Male	2,385	47.3%	449	56.3%	120	70.6%	188	62.0%	63	53.8%
<b>Ethnicity</b>										
African Am.	59	1.2%	11	1.4%	2	1.2%	3	1.0%	4	3.4%
Asian	1,690	33.5%	103	12.9%	6	3.5%	27	8.9%	41	35.0%
Mexican Am.	349	6.9%	27	3.4%	4	2.4%	9	3.0%	4	3.4%
Filipino	249	4.9%	16	2.0%	2	1.2%	2	0.7%	1	0.9%
Latino	107	2.1%	19	2.4%	5	2.9%	8	2.6%	2	1.7%
Native Am.	31	0.6%	3	0.4%	0	0.0%	7	2.3%	0	0.0%
Caucasian	1,878	37.2%	407	51.1%	64	37.6%	136	44.9%	59	50.4%
Other	680	13.5%	211	26.5%	87	51.2%	111	36.6%	6	5.1%
<b>Disciplinary Area</b>										
Arts	296	5.9%	43	5.4%	0	0.0%	12	4.0%	0	0.0%
Humanities	259	5.1%	28	3.5%	20	11.8%	18	5.9%	0	0.0%
Engineering	998	19.8%	294	36.9%	87	51.2%	68	22.4%	0	0.0%
Science/Math	1,079	21.4%	146	18.3%	30	17.6%	153	50.5%	117	100.0%
Social Science	2,406	47.7%	286	35.9%	33	19.4%	52	17.2%	0	0.0%
Dbl/Special	5	0.1%	0	0.0%	0	0.0%	0	0.0%	0	0.0%
<b>College</b>										
Revelle	879	17.4%	NA	NA	NA	NA	NA	NA	NA	NA
John Muir	1,008	20.0%	NA	NA	NA	NA	NA	NA	NA	NA
Thurgood Marshall	1,105	21.9%	NA	NA	NA	NA	NA	NA	NA	NA
Earl Warren	1,363	27.0%	NA	NA	NA	NA	NA	NA	NA	NA
Eleanor Roosevelt	681	13.5%	NA	NA	NA	NA	NA	NA	NA	NA

The majority (53%) of bachelor's degrees were awarded to females .

Almost half (48%) of all bachelor's degrees were awarded to social science majors. Just over one-third of all Master's degrees were awarded to engineering (37%) and social science (36%) majors, while the largest number of degree recipients earning PhD's were science/math majors.

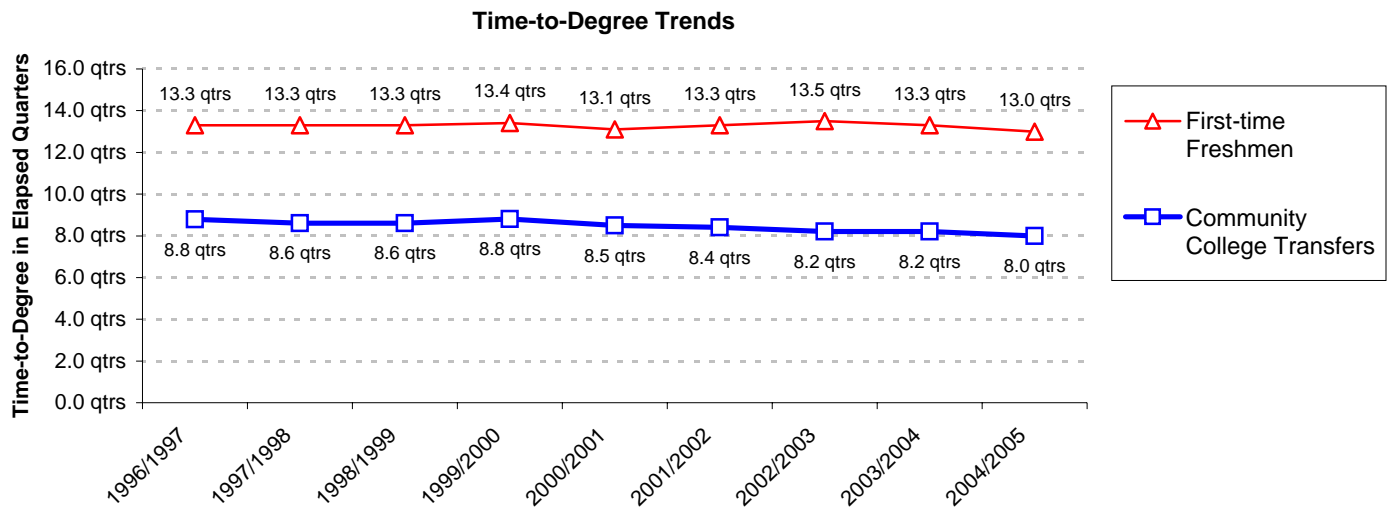
**Percentage of Degrees Awarded by Disciplinary Area, 2004-2005**



## Trends in Time-to-Degree<sup>1</sup>: Academic Performance

Academic Performance	Award Year								
	'96/'97	'97/'98	'98/'99	'99/'00	'00/'01	'01/'02	'02/'03	'03/'04	'04/'05
<b>Bachelor Degree Recipients Who Entered From High School</b>									
Average Time-to-Degree	13.3	13.3	13.3	13.4	13.1	13.3	13.5	13.3	13.0
Median Time-to-Degree	13.0	12.0	12.0	13.0	12.0	12.0	12.0	12.0	12.0
Average Units	204	204	204	205	205	205	207	209	210
GPA at Graduation	3.15	3.14	3.14	3.14	3.16	3.14	3.16	3.19	3.19
% with GPA = 3.0 - 3.5	43%	44%	42%	42%	45%	45%	43%	43%	44%
% with GPA $\geq$ 3.5	22%	21%	22%	22%	22%	20%	23%	25%	26%
<b>Bachelor Degree Recipients Who Entered From a Two-Year Community College</b>									
Average Time-to-Degree	8.8	8.6	8.6	8.8	8.5	8.4	8.2	8.2	8.0
Median Time-to-Degree	9.0	9.0	8.0	8.0	8.0	7.0	6.0	6.0	6.0
Average Units	210	209	207	207	207	205	206	205	206
GPA at Graduation	3.01	3.03	3.04	3.01	3.05	3.03	3.04	3.06	3.04
% with GPA = 3.0 - 3.5	35%	37%	36%	34%	37%	40%	36%	37%	39%
% with GPA $\geq$ 3.5	17%	17%	18%	17%	16%	15%	17%	20%	17%
<b>Total Bachelor Degree Recipients</b>									
Average Units	206	206	205	206	206	205	207	208	209
GPA at Graduation	3.10	3.10	3.11	3.10	3.12	3.11	3.12	3.15	3.14
% with GPA = 3.0 - 3.5	40%	41%	41%	40%	42%	43%	41%	41%	42%
% with GPA $\geq$ 3.5	20%	20%	20%	20%	20%	19%	21%	23%	23%

<sup>1</sup>Time-to-Degree is reported in elapsed quarters from first enrollment date to graduation. Only the records of students who enter UCSD in the Fall quarter are included in time-to-degree calculations. An academic year is defined as three quarters; twelve quarters equal four years. Summer degrees are combined with Fall degrees and represent one quarter.



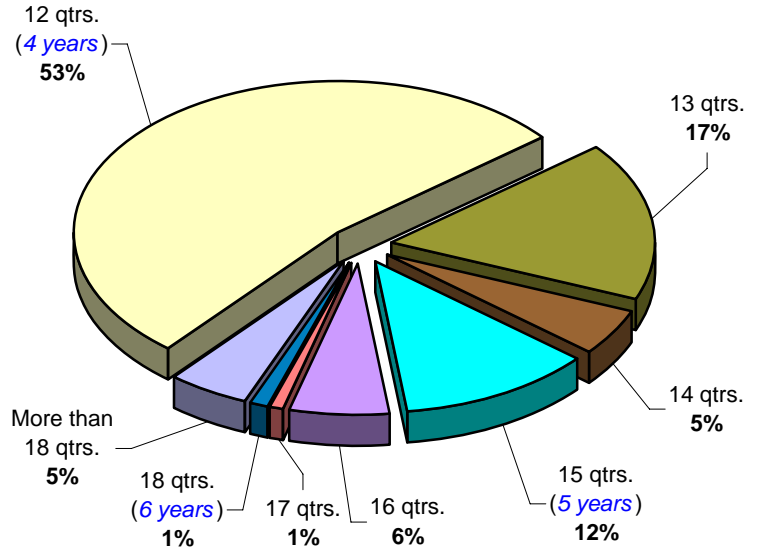
# Nominal Time-to-Degree: 2004/2005

The majority (53%) of first-time freshmen earning a bachelor's degree at UCSD did so in four years; over two-thirds (70%) graduated within 13 quarters or just over four years.

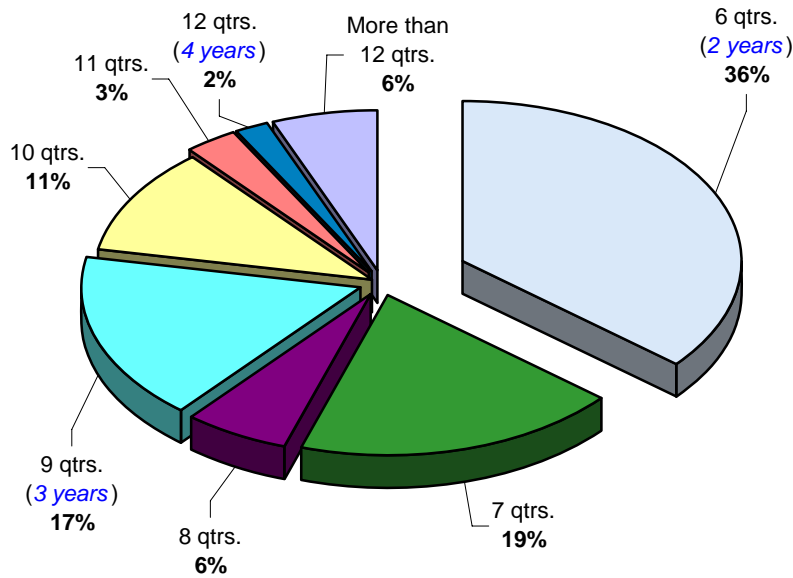
**First-Time Freshmen**

*Cumulative Frequency:*

53% graduated within 12 qtrs.  
 70% graduated within 13 qtrs.  
 75% graduated within 14 qtrs.  
 87% graduated within 15 qtrs.  
 93% graduated within 16 qtrs.  
 94% graduated within 17 qtrs.  
 95% graduated within 18 qtrs.



On average, transfer students took three years to complete their bachelor degree requirements at UCSD. Over three-quarters (78%) graduated within three years (9 quarters), just over one-third graduated within two years (6 quarters).



**Community College Transfer**

*Cumulative Frequency:*

36% graduated within 6 qtrs.  
 55% graduated within 7 qtrs.  
 61% graduated within 8 qtrs.  
 78% graduated within 9 qtrs.  
 89% graduated within 10 qtrs.  
 92% graduated within 11 qtrs.  
 94% graduated within 12 qtrs.



## Characteristics of Bachelor Degree Recipients: 2004/2005

Student Characteristics	N	%	Academic Profile				Time-to-Degree	
			GPA Mean	% 3.0 - 3.5	% GPA ≥ 3.5	Units Mean	Freshmen Mean	C.C. Transfer <sup>2</sup> Mean
<b>Gender</b>								
Female	2,658	52.7%	3.19	43.6%	25.5%	206	12.6	7.6
Male	2,385	47.3%	3.09	40.2%	19.5%	213	13.5	8.4
<b>Ethnicity</b>								
African Am.	59	1.2%	3.00	25.4%	23.7%	210	13.1	9.0
Asian	1,690	33.5%	3.09	40.1%	20.1%	212	13.0	7.9
Mexican Am.	349	6.9%	2.99	38.4%	11.7%	205	13.6	8.8
Filipino	249	4.9%	2.99	41.4%	10.8%	209	13.4	8.3
Latino	107	2.1%	3.06	41.1%	14.0%	211	13.4	8.8
Native Am.	31	0.6%	3.24	32.3%	32.3%	213	13.9	8.3
Caucasian	1,878	37.2%	3.24	44.2%	29.6%	207	12.8	7.8
Other	680	13.5%	3.14	44.6%	20.6%	211	13.2	8.1
<b>Disciplinary Area</b>								
Arts	296	5.9%	3.29	51.7%	29.7%	208	13.4	8.1
Humanities	259	5.1%	3.24	44.8%	28.6%	203	12.8	8.4
Engineering	998	19.8%	3.14	41.2%	22.4%	230	13.4	9.3
Science/Math	1,079	21.4%	3.12	38.1%	24.5%	215	13.0	8.6
Social Science	2,406	47.7%	3.12	42.5%	20.3%	199	12.8	7.1
DbI/Special	5	0.1%	3.49	40.0%	60.0%	232	14.3	10.0
<b>College</b>								
Revelle	879	17.4%	3.11	37.8%	22.9%	220	13.3	9.0
Muir	1,008	20.0%	3.19	43.0%	26.3%	206	12.8	7.9
Marshall	1,105	21.9%	3.12	44.3%	18.5%	202	13.0	7.5
Warren	1,363	27.0%	3.14	42.4%	22.7%	211	13.1	8.1
Roosevelt	681	13.5%	3.14	41.1%	23.5%	209	12.9	8.2
<b>School Type</b>								
High School	3,339	66.2%	3.19	43.5%	25.7%	210	13.0	--
2yr College	1,597	31.7%	3.04	38.6%	16.6%	206	--	8.0
4yr College/Univ.	93	1.8%	3.14	47.3%	19.4%	210	--	--
Unknown	14	0.3%	2.64	21.4%	7.1%	235	--	--
<b>Total Population</b>	<b>5,043</b>	<b>100.0%</b>	<b>3.14</b>	<b>42.0%</b>	<b>22.6%</b>	<b>209</b>	<b>13.0</b>	<b>8.0</b>

Time-to-degree for bachelor degree recipients tends to vary by disciplinary area. In general, engineering majors require more time to complete their degree requirements compared to non-engineering

Approximately 65% of the undergraduate degree recipients graduated with a grade point average of 3.0 ('B') or better. Just over one in five graduated with a grade point average of 'B+' or better and an average of 209 units, respectively.

<sup>2</sup>For Transfer students, time-to-degree is calculated only for those students who matriculate from a two-year community college (C.C.). The typical community college transfer student enters UCSD with 90 units of transferable academic credit.

On average, first-time freshmen take just over four years (13 quarters) to graduate. Community College transfer students tend to graduate in just under three years or 8 quarters.



### Profile of Bachelor Degree Recipients Majoring in the Arts: 2004/2005



Warren College awarded the largest number of bachelor's degrees in arts compared to the other four colleges.

Relative to other disciplinary areas, a larger percentage (81%) of arts majors graduated with a GPA of 'B' or better. The average GPA was 3.29, respectively.

Student Characteristics	N	%	Academic Profile			Units Mean	Time-to-Degree	
			GPA Mean	% GPA 3.0 - 3.5	% GPA ≥ 3.5		Freshmen Mean	C.C. Transfer Mean
<b>Gender</b>								
Female	171	57.8%	3.35	49.1%	36.3%	207	13.0	7.8
Male	125	42.2%	3.22	55.2%	20.8%	210	14.0	8.4
<b>Ethnicity</b>								
African Am.	8	2.7%	3.20	75.0%	12.5%	189	12.3	5.8
Asian	90	30.4%	3.22	54.4%	23.3%	206	13.3	8.1
Mexican Am.	25	8.4%	3.20	44.0%	24.0%	219	14.3	9.1
Filipino	11	3.7%	3.31	81.8%	9.1%	202	12.5	7.8
Latino	10	3.4%	3.24	50.0%	20.0%	213	16.3	10.3
Native Am.	3	1.0%	3.33	33.3%	33.3%	198	14.0	9.0
Caucasian	124	41.9%	3.36	46.8%	39.5%	209	13.4	8.0
Other	25	8.4%	3.35	56.0%	28.0%	205	12.3	7.2
<b>College</b>								
Revelle	20	6.8%	3.16	35.0%	20.0%	227	14.3	--
Muir	74	25.0%	3.38	45.9%	39.2%	210	13.1	8.1
Marshall	68	23.0%	3.21	58.8%	20.6%	205	13.2	7.7
Warren	86	29.1%	3.33	54.7%	33.7%	204	13.4	7.7
Roosevelt	48	16.2%	3.25	52.1%	25.0%	209	13.3	11.4
<b>School Type</b>								
High School	159	53.7%	3.25	49.7%	23.9%	206	13.4	--
2yr College	132	44.6%	3.36	54.5%	37.1%	209	--	8.1
4yr College/Univ.	3	1.0%	3.29	66.7%	33.3%	207	--	--
Unknown	2	0.7%	2.46	0.0%	0.0%	271	--	--
<b>Total Arts</b>	296	100.0%	3.29	51.7%	29.7%	208	13.4	8.1

\* Five or fewer cases.

### Bachelor Degrees in the Arts: Trends Profile - 1994/1995 to 2003/2004

Student Characteristics	N	%	Academic Profile			Units Mean	Time-to-Degree	
			GPA Mean	% GPA 3.0 - 3.5	% GPA ≥ 3.5		Freshmen Mean	C.C. Transfer Mean
<b>Award Year</b>								
2003/2004	281	100.0%	3.34	44%	38%	211	13.8	8.0
2002/2003	300	100.0%	3.27	52%	26%	207	13.9	8.1
2001/2002	236	100.0%	3.25	52%	25%	202	13.6	8.5
2000/2001	214	100.0%	3.30	51%	31%	206	13.5	8.1
1999/2000	147	100.0%	3.26	47%	28%	205	13.4	8.4
1998/1999	156	100.0%	3.26	60%	23%	204	13.5	7.7
1997/1998	123	100.0%	3.28	56%	28%	210	13.6	8.4
1996/1997	168	100.0%	3.27	51%	29%	210	13.6	8.9
1995/1996	161	100.0%	3.25	45%	30%	211	13.2	9.4
1994/1995	145	100.0%	3.28	52%	27%	207	13.7	9.7



## Profile of Bachelor Degree Recipients Majoring in the Humanities: 2004/2005

Student Characteristics	N	%	Academic Profile				Time-to-Degree	
			GPA Mean	% GPA 3.0 - 3.5	% GPA ≥ 3.5	Units Mean	Freshmen Mean	C.C. Transfer Mean
<b>Gender</b>								
Female	149	57.5%	3.27	40.9%	32.9%	205	12.6	8.0
Male	110	42.5%	3.20	50.0%	22.7%	200	13.1	8.8
<b>Ethnicity</b>								
African Am.	3	1.2%	3.34	0.0%	66.7%	210	12.0	8.0
Asian	29	11.2%	3.15	51.7%	20.7%	204	12.5	8.5
Mexican Am.	29	11.2%	2.96	41.4%	10.3%	204	14.8	9.8
Filipino	9	3.5%	3.15	55.6%	11.1%	215	13.0	7.8
Latino	11	4.2%	3.15	36.4%	18.2%	201	12.8	6.5
Native Am.	2	0.8%	3.91	0.0%	100.0%	215	12.0	6.0
Caucasian	137	52.9%	3.32	41.6%	37.2%	201	12.5	8.0
Other	39	15.1%	3.23	59.0%	17.9%	203	12.8	9.4
<b>College</b>								
Revelle	21	8.1%	3.20	42.9%	23.8%	216	13.8	10.0
Muir	76	29.3%	3.37	39.5%	42.1%	202	12.0	7.8
Marshall	59	22.8%	3.26	52.5%	25.4%	201	12.6	8.3
Warren	55	21.2%	3.07	50.9%	10.9%	199	13.0	9.1
Roosevelt	47	18.1%	3.21	38.3%	31.9%	204	13.2	9.6
<b>School Type</b>								
High School	159	61.4%	3.29	44.0%	33.3%	206	12.8	--
2yr College	97	37.5%	3.16	45.4%	21.6%	198	--	8.4
4yr College/Univ.	3	1.2%	3.11	66.7%	0.0%	195	--	--
Unknown	0	0.0%	--	--	--	--	--	--
<b>Total Humanities</b>	<b>259</b>	<b>100.0%</b>	<b>3.24</b>	<b>44.8%</b>	<b>28.6%</b>	<b>203</b>	<b>12.8</b>	<b>8.4</b>

\* Five or fewer cases.

## Bachelor Degrees in the Humanities: Trends Profile - 1994/1995 to 2003/2004

Student Characteristics	N	%	Academic Profile				Time-to-Degree	
			GPA Mean	% GPA 3.0 - 3.5	% GPA ≥ 3.5	Units Mean	Freshmen Mean	C.C. Transfer Mean
<b>Award Year</b>								
2003/2004	253	100.0%	3.22	47%	28%	204	13.1	7.7
2002/2003	226	100.0%	3.17	43%	24%	205	13.4	8.0
2001/2002	244	100.0%	3.16	43%	22%	203	13.7	8.3
2000/2001	273	100.0%	3.14	48%	19%	202	13.6	7.6
1999/2000	256	100.0%	3.17	44%	24%	201	13.5	8.6
1998/1999	312	100.0%	3.19	45%	27%	201	13.4	9.2
1997/1998	291	100.0%	3.18	44%	26%	202	13.5	8.6
1996/1997	307	100.0%	3.15	48%	19%	201	12.9	8.7
1995/1996	305	100.0%	3.15	49%	21%	202	13.3	8.4
1994/1995	346	100.0%	3.18	43%	26%	202	13.0	9.3

The majority (58%) of students earning a bachelor's degree in humanities were female.

Muir College awarded the largest number of humanities degrees followed by Thurgood Marshall College.

Almost three-quarters (73%) of humanities majors graduated with a 'B' or better grade point average; the mean GPA was 3.24, respectively.

## Profile of Bachelor Degree Recipients Majoring in Engineering: 2004/2005



The majority (78%) of engineering degrees were awarded to males.

Warren College continues to award the largest proportion (45%) of bachelor's degrees in engineering.

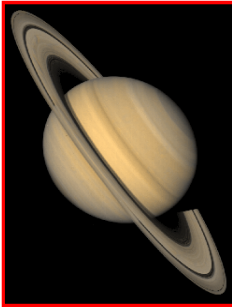
Sixty-four percent of engineering majors graduated with a GPA of 'B' or higher; the average GPA for graduating engineering students was 3.14, respectively.

Student Characteristics	N	%	Academic Profile				Time-to-Degree	
			GPA Mean	% GPA 3.0 - 3.5	% GPA ≥ 3.5	Units Mean	Freshmen Mean	C.C. Transfer Mean
<b>Gender</b>								
Female	216	21.6%	3.21	43.5%	27.3%	230	13.0	9.4
Male	782	78.4%	3.12	40.5%	21.1%	230	13.5	9.3
<b>Ethnicity</b>								
African Am.	7	0.7%	3.00	14.3%	28.6%	234	14.0	9.6
Asian	474	47.5%	3.15	39.0%	25.3%	228	13.2	8.7
Mexican Am.	41	4.1%	2.97	26.8%	9.8%	226	14.0	11.7
Filipino	44	4.4%	3.00	31.8%	13.6%	228	14.7	9.4
Latino	12	1.2%	3.02	33.3%	16.7%	242	13.4	11.2
Native Am.	7	0.7%	3.14	42.9%	14.3%	244	14.3	10.0
Caucasian	275	27.6%	3.20	46.2%	24.0%	232	13.5	9.5
Other	138	13.8%	3.11	47.8%	16.7%	231	13.2	10.1
<b>College</b>								
Revelle	219	21.9%	3.18	44.7%	22.8%	238	13.4	9.2
Muir	119	11.9%	3.12	42.0%	21.8%	229	13.5	10.3
Marshall	146	14.6%	3.02	39.7%	11.6%	226	13.8	9.2
Warren	452	45.3%	3.19	40.5%	26.3%	226	13.1	9.3
Roosevelt	62	6.2%	3.03	35.5%	19.4%	241	14.5	9.2
<b>School Type</b>								
High School	654	65.5%	3.18	43.1%	25.1%	229	13.4	--
2yr College	330	33.1%	3.06	37.0%	17.0%	230	--	9.3
4yr College/Univ.	12	1.2%	3.28	50.0%	25.0%	248	--	--
Unknown	2	0.2%	3.50	50.0%	50.0%	303	--	--
<b>Total Engineering</b>								
	998	100.0%	3.14	41.2%	22.4%	230	13.4	9.3

\* Five or fewer cases.

## Bachelor Degrees in Engineering: Trends Profile - 1994/1995 to 2003/2004

Student Characteristics	N	%	Academic Profile				Time-to-Degree	
			GPA Mean	% GPA 3.0 - 3.5	% GPA ≥ 3.5	Units Mean	Freshmen Mean	C.C. Transfer Mean
<b>Award Year</b>								
2003/2004	654	100.0%	3.10	40%	19%	228	13.9	10.0
2002/2003	674	100.0%	3.11	38%	21%	227	13.9	9.8
2001/2002	563	100.0%	3.08	42%	16%	225	13.9	9.8
2000/2001	540	100.0%	3.10	43%	18%	224	13.8	9.6
1999/2000	533	100.0%	3.08	39%	17%	227	13.9	10.0
1998/1999	446	100.0%	3.13	41%	20%	228	14.2	9.9
1997/1998	402	100.0%	3.12	43%	19%	230	14.2	9.8
1996/1997	398	100.0%	3.09	37%	20%	230	14.3	10.8
1995/1996	424	100.0%	3.13	41%	21%	231	14.6	10.5
1994/1995	418	100.0%	3.10	40%	17%	234	14.6	11.4



## Profile of Bachelor Degree Recipients Majoring in Science and Math: 2004/2005

Student Characteristics	N	%	Academic Profile				Time-to-Degree	
			GPA Mean	% GPA 3.0 - 3.5	% GPA ≥ 3.5	Units Mean	Freshmen Mean	C.C. Transfer Mean
<b>Gender</b>								
Female	606	56.2%	3.14	38.6%	25.4%	216	12.7	8.5
Male	473	43.8%	3.10	37.4%	23.3%	215	13.5	8.8
<b>Ethnicity</b>								
African Am.	8	0.7%	3.23	25.0%	37.5%	226	13.0	10.2
Asian	374	34.7%	3.09	39.0%	21.4%	216	12.9	8.4
Mexican Am.	62	5.7%	2.89	27.4%	11.3%	210	13.3	8.7
Filipino	74	6.9%	2.92	40.5%	8.1%	212	13.1	9.1
Latino	14	1.3%	2.83	35.7%	0.0%	223	13.2	11.0
Native Am.	9	0.8%	3.46	22.2%	55.6%	217	12.3	10.4
Caucasian	402	37.3%	3.25	40.8%	32.8%	214	12.9	8.3
Other	136	12.6%	3.07	33.1%	22.8%	218	13.8	8.9
<b>College</b>								
Revelle	321	29.7%	3.13	34.9%	26.2%	219	13.3	8.5
Muir	222	20.6%	3.20	41.4%	28.8%	212	12.6	8.7
Marshall	187	17.3%	3.08	41.7%	17.1%	209	12.9	8.2
Warren	256	23.7%	3.11	35.9%	25.8%	216	13.3	8.8
Roosevelt	91	8.4%	3.03	39.6%	18.7%	217	13.4	8.7
<b>School Type</b>								
High School	762	70.6%	3.21	42.3%	27.6%	217	13.0	--
2yr College	292	27.1%	2.92	26.7%	16.4%	211	--	8.6
4yr College/Univ.	23	2.1%	3.11	47.8%	26.1%	219	--	--
Unknown	2	0.2%	2.27	0.0%	0.0%	204	--	--
<b>Total Science/Math</b>	<b>1,079</b>	<b>100.0%</b>	<b>3.12</b>	<b>38.1%</b>	<b>24.5%</b>	<b>215</b>	<b>13.0</b>	<b>8.6</b>

\* Five or fewer cases.

## Bachelor Degrees in Science and Math: Trends Profile - 1994/1995 to 2003/2004

Student Characteristics	N	%	Academic Profile				Time-to-Degree	
			GPA Mean	% GPA 3.0 - 3.5	% GPA ≥ 3.5	Units Mean	Freshmen Mean	C.C. Transfer Mean
<b>Award Year</b>								
2003/2004	920	100.0%	3.11	35%	24%	214	13.3	8.5
2002/2003	994	100.0%	3.12	38%	23%	212	13.2	8.6
2001/2002	957	100.0%	3.10	39%	22%	211	13.3	9.1
2000/2001	1,029	100.0%	3.10	36%	23%	211	13.1	9.1
1999/2000	1,102	100.0%	3.09	37%	23%	211	13.4	9.1
1998/1999	1,160	100.0%	3.10	36%	22%	208	13.3	8.6
1997/1998	1,040	100.0%	3.11	39%	22%	210	13.4	8.7
1996/1997	1,122	100.0%	3.09	37%	21%	210	13.3	9.1
1995/1996	1,030	100.0%	3.09	39%	21%	209	13.3	9.4
1994/1995	902	100.0%	3.07	37%	19%	208	13.4	10.0

The majority of science/math degrees were awarded to females.

Approximately 63% of science/math majors graduated with a 'B' or better GPA; twenty-five percent graduated with a GPA of 'B+' or better.

## Profile of Bachelor Degree Recipients Majoring in the Social Sciences: 2004/2005



The majority of social science degree recipients were female (63%).

Approximately 63% of social science majors graduated with a GPA of 3.0 or higher. Twenty percent graduated with a GPA of 3.5 or higher.

Student Characteristics	N	%	Academic Profile				Time-to-Degree	
			GPA Mean	% GPA 3.0 - 3.5	% GPA ≥ 3.5	Units Mean	Freshmen Mean	C.C. Transfer Mean
<b>Gender</b>								
Female	1,512	62.8%	3.17	45.2%	23.2%	199	12.6	7.0
Male	894	37.2%	3.03	38.0%	15.4%	198	13.3	7.4
<b>Ethnicity</b>								
African Am.	33	1.4%	2.86	18.2%	18.2%	206	13.3	9.5
Asian	723	30.0%	3.04	39.0%	15.6%	199	12.8	6.8
Mexican Am.	192	8.0%	3.00	43.2%	10.9%	197	13.4	8.0
Filipino	111	4.6%	3.00	40.5%	11.7%	198	13.0	7.8
Latino	60	2.5%	3.07	43.3%	15.0%	203	13.2	6.9
Native Am.	10	0.4%	2.96	40.0%	10.0%	190	15.8	6.0
Caucasian	937	38.9%	3.22	45.1%	27.2%	198	12.6	7.1
Other	340	14.1%	3.15	45.3%	20.9%	200	12.9	7.0
<b>College</b>								
Revelle	297	12.3%	3.03	35.4%	19.5%	208	13.1	9.9
Muir	517	21.5%	3.15	43.9%	22.1%	197	12.8	7.3
Marshall	643	26.7%	3.13	43.9%	19.4%	194	12.8	6.9
Warren	513	21.3%	3.09	44.4%	17.2%	197	12.9	6.9
Roosevelt	432	18.0%	3.16	41.4%	23.8%	203	12.6	7.3
<b>School Type</b>								
High School	1,601	66.5%	3.18	43.7%	24.4%	201	12.8	--
2yr College	745	31.0%	3.00	40.1%	12.2%	195	--	7.1
4yr College/Univ.	52	2.2%	3.12	44.2%	15.4%	199	--	--
Unknown	8	0.3%	2.57	25.0%	0.0%	217	--	--
<b>Total Social Sci.</b>	<b>2,406</b>	<b>100.0%</b>	<b>3.12</b>	<b>42.5%</b>	<b>20.3%</b>	<b>199</b>	<b>12.8</b>	<b>7.1</b>

\* Five or fewer cases.

## Bachelor Degrees in Social Sciences: Trends Profile - 1994/1995 to 2003/2004

Student Characteristics	N	%	Academic Profile				Time-to-Degree	
			GPA Mean	% GPA 3.0 - 3.5	% GPA ≥ 3.5	Units Mean	Freshmen Mean	C.C. Transfer Mean
<b>Award Year</b>								
2003/2004	2,022	100.0%	3.14	42%	22%	199	13.0	7.3
2002/2003	2,051	100.0%	3.10	42%	19%	198	13.0	7.5
2001/2002	1,916	100.0%	3.09	45%	17%	197	13.0	7.7
2000/2001	1,649	100.0%	3.11	44%	18%	197	12.8	7.8
1999/2000	1,494	100.0%	3.09	42%	18%	196	13.2	8.1
1998/1999	1,494	100.0%	3.08	42%	17%	195	12.9	7.9
1997/1998	1,362	100.0%	3.06	44%	15%	197	12.9	7.9
1996/1997	1,320	100.0%	3.09	40%	19%	196	13.1	7.8
1995/1996	1,388	100.0%	3.09	43%	18%	197	13.1	8.1
1994/1995	1,429	100.0%	3.07	42%	17%	198	13.2	8.7



*Degrees Conferred* is an annual publication of the  
Office of Student Research & Information,  
Student Affairs, 858-534-2382.

This document is also available on the  
World Wide Web at:

[studentresearch.ucsd.edu](http://studentresearch.ucsd.edu)