

Degrees Conferred

Profile of Degree Recipients

2012 - 2013



University of California, San Diego
Office of Student Research & Information
Student Affairs
studentresearch.ucsd.edu

DEGREES CONFERRED

Profile of Degree Recipients

2012- 2013

University of California, San Diego

William B. Armstrong, Ph.D.
Director

Heidi M. Carty, Ph.D.
Principal Research Analyst

Greg Martin
Programmer Analyst

Jason R. Thornton
Research Analyst

Student Research & Information
Student Affairs
University of California, San Diego
La Jolla, CA 92093-0088
<http://studentresearch.ucsd.edu>

Highlights

- UC San Diego awarded a combined total of 8,287 undergraduate, graduate and Medical degrees during the 2012/2013 academic year. A record high (N=1,198) number of Master's and M.D.'s (N=130) degrees were awarded in 2012/2013.
- The majority (52%) of undergraduate and graduate Pharmaceutical degrees (71%) were awarded to females, while the majority of Master's degrees (61%) and Ph.D.s (58%) were awarded to males.
- UCSD awarded 6,170 undergraduate degrees in 2012/2013. Of these, the largest percentage (48%; 2,929) were granted to social science majors, followed by biology majors (20%; 1,215).
- Approximately, 59% of the undergraduate degrees awarded in 2012/2013 were earned by students of color.
- More than one-half (53%) of all first-time freshmen who earned a Bachelor's degree at UCSD did so in four years; almost three-quarters (72%) graduated within 13 quarters or just over four years.
- On average, transfer students took 2.6 years to complete their Bachelor degree requirements at UCSD, over three-quarters (83%) graduated within nine quarters.
- Approximately 64% of the 2012/2013 undergraduate degree recipients graduated with a grade point average of 3.0 ('B') or higher; approximately one in four (25%) graduated with a grade point average of 3.5 ('B+') or higher.
- The average GPA for all undergraduate degree recipients in 2012/2013 was 3.15. The average GPA for the 2012/2013 first-time freshmen graduates was 3.19. The average GPA for the 2012/2013 transfer students was 3.09.

All Degree Types

2012 / 2013

UC San Diego Awarded a Total of 8,287 Undergraduate, Graduate and Medical Degrees During the 2012/2013 Academic Year.

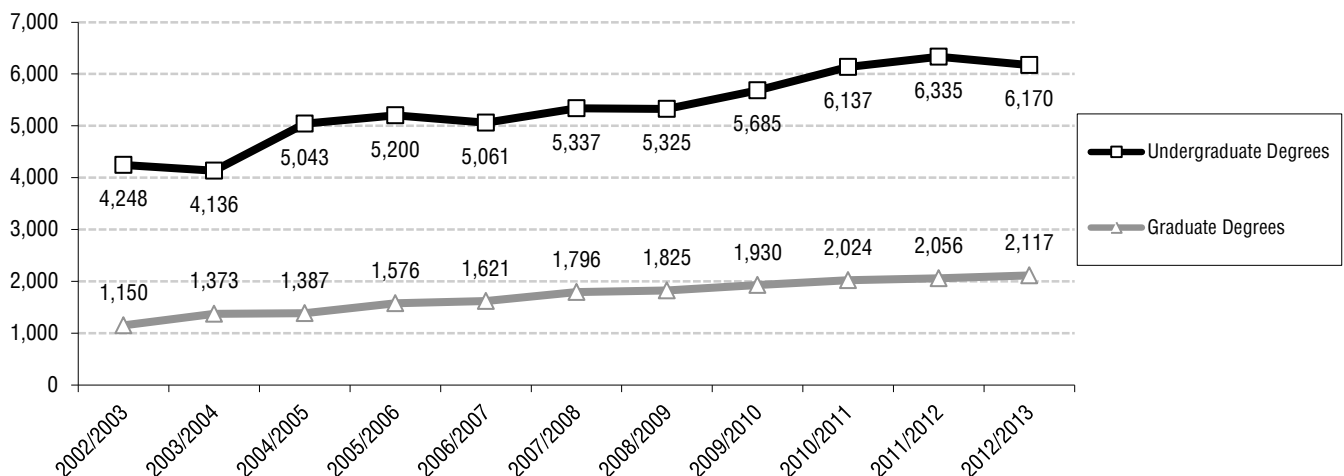
Degrees by the Numbers



Award Year	Bachelor	Master	Candidate in Phil.	Doctor of Philosophy	Doctor of Medicine	Doctor of Pharmacy	Total
2012/2013	6,170	1,198	236	494	130	59	8,287
2011/2012	6,335	1,106	233	528	125	64	8,391
2010/2011	6,137	1,071	276	491	129	57	8,161
2009/2010	5,685	1,033	262	459	122	54	7,615
2008/2009	5,325	990	234	437	109	55	7,150
2007/2008	5,337	894	258	488	125	31	7,133
2006/2007	5,061	901	185	387	101	47	6,682
2005/2006	5,200	761	253	354	186	22	6,776
2004/2005	5,043	797	170	303	117	--	6,430
2003/2004	4,136	785	161	327	100	--	5,509
2002/2003	4,248	573	170	279	128	--	5,398

8,287 students graduated from UCSD in 2012/2013. A record high (N=1,198) number of Master's and M.D.'s (N=130) degrees were awarded in 2012/2013.

Trends in Degrees Awarded





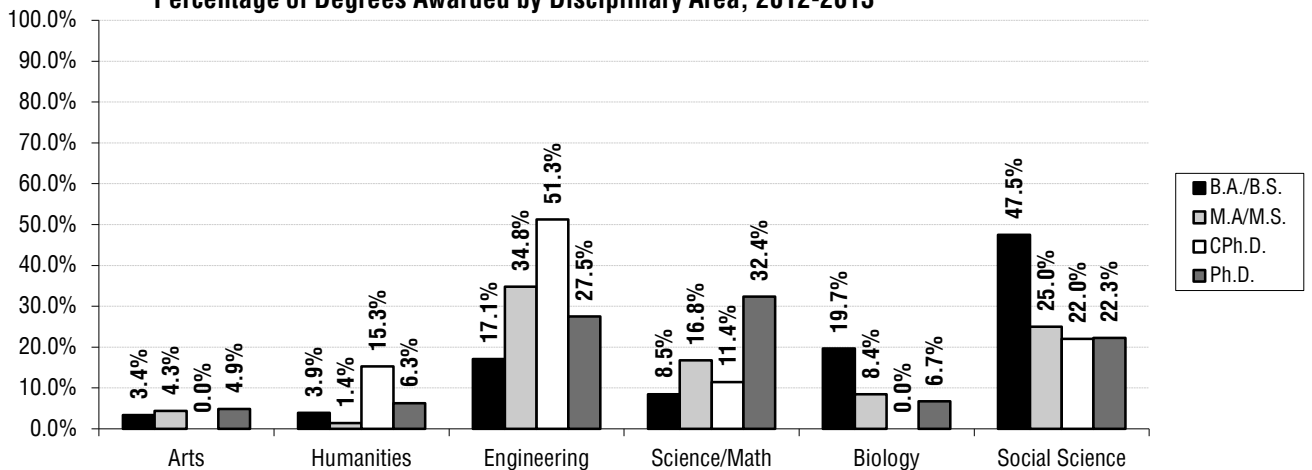
Student Characteristics: All Degree Types 2012/2013

The majority (52%) of Bachelor's degrees were awarded to females.

Almost one-half (48%) of all Bachelor's degrees were awarded to social science majors. Just over one-third (35%) of all Master's degrees were awarded to engineering majors. The largest number (32%) of degree recipients earning a Ph.D. were science/math majors.

Background Characteristics	B.A./B.S. N=6,170		M.A./M.S. N=1,198		CPh.D. N=236		Ph.D. N=494		M.D. N=130		Pharm. N=59		Total N=8,287	
	N	%	N	%	N	%	N	%	N	%	N	%	N	%
Gender														
Female	3,213	52.1%	471	39.3%	70	29.7%	209	42.3%	62	47.7%	42	71.2%	4,067	49.1%
Male	2,957	47.9%	727	60.7%	166	70.3%	285	57.7%	68	52.3%	17	28.8%	4,220	50.9%
Ethnicity														
African Am.	101	1.6%	8	0.7%	3	1.3%	7	1.4%	1	0.8%	2	3.4%	122	1.5%
Asian	2,445	39.6%	72	6.0%	12	5.1%	52	10.5%	38	29.2%	23	39.0%	2,642	31.9%
Mexican Am.	593	9.6%	24	2.0%	12	5.1%	25	5.1%	6	4.6%	1	1.7%	661	8.0%
Filipino	255	4.1%	4	0.3%	1	0.4%	3	0.6%	1	0.8%	4	6.8%	268	3.2%
Latino	191	3.1%	8	0.7%	4	1.7%	10	2.0%	5	3.8%	1	1.7%	219	2.6%
Native Am.	31	0.5%	1	0.1%	0	0.0%	6	1.2%	2	1.5%	0	0.0%	40	0.5%
Caucasian	1,488	24.1%	168	14.0%	98	41.5%	251	50.8%	42	32.3%	10	16.9%	2,057	24.8%
Other	1,066	17.3%	913	76.2%	106	44.9%	140	28.3%	35	26.9%	18	30.5%	2,278	27.5%
Disciplinary Area														
Arts	208	3.4%	52	4.3%	0	0.0%	24	4.9%	0	0.0%	0	0.0%	284	3.4%
Humanities	239	3.9%	17	1.4%	36	15.3%	31	6.3%	0	0.0%	0	0.0%	323	3.9%
Engineering	1,052	17.1%	417	34.8%	121	51.3%	136	27.5%	0	0.0%	0	0.0%	1,726	20.8%
Science/Math	522	8.5%	201	16.8%	27	11.4%	160	32.4%	130	100.0%	59	100.0%	1,099	13.3%
Biology	1,215	19.7%	101	8.4%	0	0.0%	33	6.7%	0	0.0%	0	0.0%	1,349	16.3%
Social Science	2,929	47.5%	299	25.0%	52	22.0%	110	22.3%	0	0.0%	0	0.0%	3,390	40.9%
DbI/Special	5	0.1%	0	0.0%	0	0.0%	0	0.0%	0	0.0%	0	0.0%	5	0.1%
Management	0	0.0%	111	9.3%	0	0.0%	0	0.0%	0	0.0%	0	0.0%	111	1.3%
College														
Revelle	824	13.4%	NA	NA	NA	NA	NA	NA	NA	NA	NA	NA	NA	NA
John Muir	1,078	17.5%	NA	NA	NA	NA	NA	NA	NA	NA	NA	NA	NA	NA
Thurgood Marshall	1,220	19.8%	NA	NA	NA	NA	NA	NA	NA	NA	NA	NA	NA	NA
Earl Warren	1,115	18.1%	NA	NA	NA	NA	NA	NA	NA	NA	NA	NA	NA	NA
Eleanor Roosevelt	1,006	16.3%	NA	NA	NA	NA	NA	NA	NA	NA	NA	NA	NA	NA
Sixth	927	15.0%	NA	NA	NA	NA	NA	NA	NA	NA	NA	NA	NA	NA

Percentage of Degrees Awarded by Disciplinary Area, 2012-2013

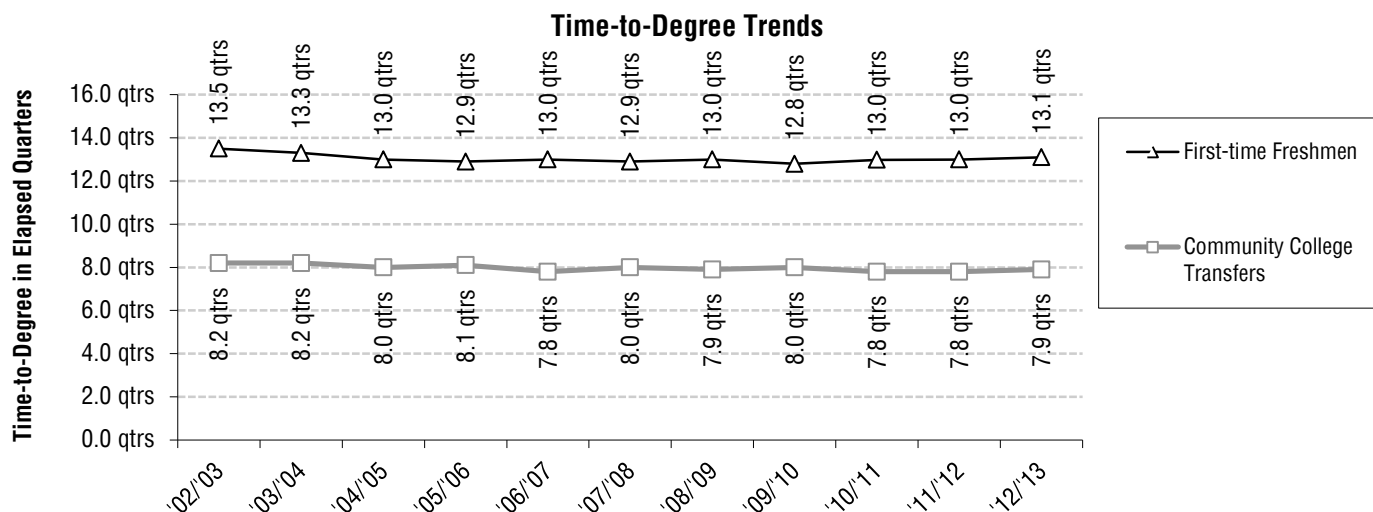


Bachelor Degrees

Trends in Time-to-Degree¹: Academic Performance

Academic Performance	Award Year										
	'02/'03	'03/'04	'04/'05	'05/'06	'06/'07	'07/'08	'08/'09	'09/'10	'10/'11	'11/'12	'12/'13
Bachelor Degree Recipients Who Entered From High School											
Average Time-to-Degree	13.5	13.3	13.0	12.9	13.0	12.9	13.0	12.8	13.0	13.0	13.1
Median Time-to-Degree	12.0	12.0	12.0	12.0	12.0	12.0	12.0	12.0	12.0	12.0	12.0
Average Units	207	209	210	211	213	213	213	215	217	218	220
GPA at Graduation	3.16	3.19	3.19	3.20	3.17	3.18	3.16	3.20	3.19	3.19	3.19
% with GPA = 3.0 - 3.5	43%	43%	44%	43%	43%	43%	42%	44%	43%	41%	40%
% with GPA \geq 3.5	23%	25%	26%	26%	25%	25%	24%	27%	26%	27%	28%
Bachelor Degree Recipients Who Entered From a Two-Year Community College											
Average Time-to-Degree	8.2	8.2	8.0	8.1	7.8	8.0	7.9	8.0	7.8	7.8	7.9
Median Time-to-Degree	6.0	6.0	6.0	6.0	6.0	6.0	6.0	7.0	7.0	7.0	7.0
Average Units	206	205	206	206	205	206	207	206	206	206	207
GPA at Graduation	3.04	3.06	3.04	3.06	3.06	3.04	3.03	3.04	3.07	3.08	3.09
% with GPA = 3.0 - 3.5	36%	37%	39%	36%	37%	37%	36%	34%	38%	36%	37%
% with GPA \geq 3.5	17%	20%	17%	19%	19%	18%	18%	19%	20%	21%	21%
Total Bachelor Degree Recipients											
Average Units	207	208	209	210	210	211	211	212	213	214	215
GPA at Graduation	3.12	3.15	3.14	3.16	3.14	3.14	3.12	3.15	3.15	3.15	3.15
% with GPA = 3.0 - 3.5	41%	41%	42%	41%	41%	41%	40%	41%	41%	40%	39%
% with GPA \geq 3.5	21%	23%	23%	24%	23%	23%	22%	24%	23%	24%	25%

¹Time-to-Degree is reported in elapsed quarters from first enrollment date to graduation. Only the records of students who enter UCSD in the Fall quarter are included in time-to-degree calculations. An academic year is defined as three quarters; twelve quarters equal four years. Summer degrees are combined with fall degrees and represent one quarter.



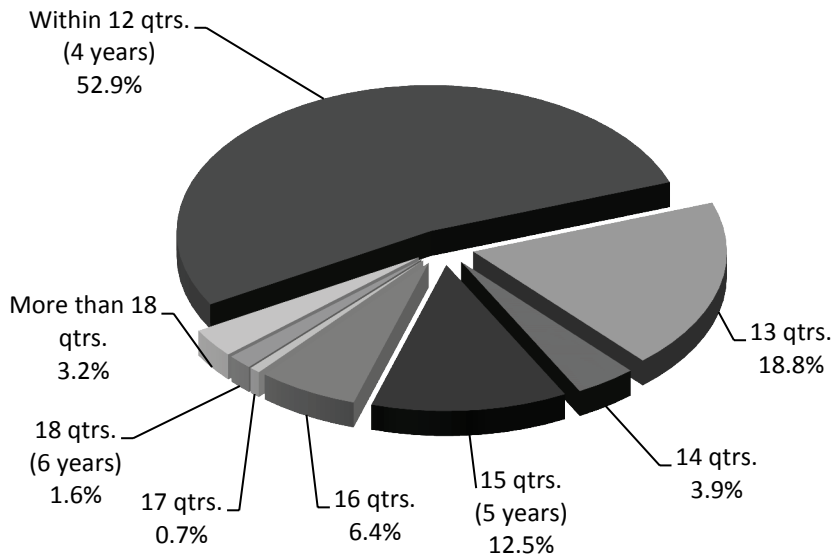
Nominal Time-to-Degree: 2012/2013

The average first-time freshman takes 4.4 years to graduate. Fifty-three percent of first-time freshmen earning a Bachelor's degree at UCSD did so within 4 years; almost three-quarters (72%) graduated within 13 quarters or just over 4 years, 88% within 5 years, and 97% within 6 years (18 quarters).

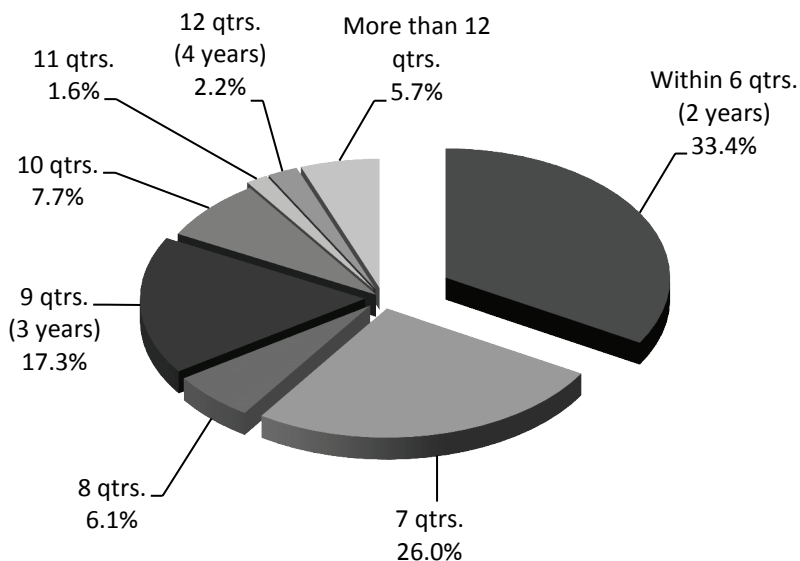
First-Time Freshmen

Cumulative Frequency:

52.9% graduated within 12 qtrs.
 71.7% graduated within 13 qtrs.
 75.6% graduated within 14 qtrs.
 88.1% graduated within 15 qtrs.
 94.5% graduated within 16 qtrs.
 95.2% graduated within 17 qtrs.
 96.8% graduated within 18 qtrs.



On average, transfer students took 2.6 years to complete their bachelor degree requirements at UCSD. Over three-quarters (80%) graduated within 3 years (9 quarters), and one-third (33%) graduated within 2 years (6 quarters).



Community College Transfer

Cumulative Frequency:

33.4% graduated within 6 qtrs.
 59.4% graduated within 7 qtrs.
 65.5% graduated within 8 qtrs.
 82.8% graduated within 9 qtrs.
 90.5% graduated within 10 qtrs.
 92.1% graduated within 11 qtrs.
 94.3% graduated within 12 qtrs.



Characteristics of Bachelor Degree Recipients: 2012/2013

Student Characteristics	N	%	GPA Mean	Academic Profile % GPA		Units Mean	Time-to-Degree	
				3.0 - 3.5	% GPA ≥ 3.5		Freshmen Mean	C.C. Transfer ² Mean
Gender								
Female	3,213	52.1%	3.17	39.6%	26.2%	214	12.9	7.6
Male	2,957	47.9%	3.13	38.4%	24.3%	217	13.3	8.2
Ethnicity								
African Am.	101	1.6%	3.07	53.5%	11.9%	215	13.9	8.0
Asian	2,445	39.6%	3.08	40.7%	18.4%	215	13.0	7.6
Mexican Am.	593	9.6%	3.02	36.9%	16.0%	212	14.1	8.5
Filipino	255	4.1%	3.06	41.2%	14.5%	215	13.6	8.1
Latino	191	3.1%	3.07	35.1%	19.9%	209	13.7	7.7
Native Am.	31	0.5%	3.12	29.0%	25.8%	210	14.0	8.1
Caucasian	1,488	24.1%	3.23	39.7%	30.5%	212	13.0	7.8
Other	1,066	17.3%	3.33	34.4%	43.6%	224	12.6	8.4
Disciplinary Area								
Arts	208	3.4%	3.38	42.8%	41.3%	216	13.9	8.3
Humanities	239	3.9%	3.25	41.4%	32.6%	209	13.7	7.9
Engineering	1,052	17.1%	3.13	41.0%	21.4%	236	13.6	9.5
Science/Math	522	8.5%	3.14	36.4%	25.7%	221	12.9	8.4
Biology	1,215	19.7%	3.20	36.9%	30.4%	220	13.0	8.6
Social Science	2,929	47.5%	3.12	39.2%	22.8%	205	12.9	7.3
DbI/Special	5	0.1%	3.33	80.0%	20.0%	219	11.5	6.0
College								
Revelle	824	13.4%	3.12	37.9%	24.0%	225	13.2	9.0
Muir	1,078	17.5%	3.18	39.5%	27.5%	215	12.9	8.0
Marshall	1,220	19.8%	3.16	39.2%	24.5%	208	12.9	7.5
Warren	1,115	18.1%	3.14	38.7%	24.9%	216	12.9	8.3
Roosevelt	1,006	16.3%	3.15	39.0%	25.6%	214	13.2	7.9
Sixth	927	15.0%	3.16	39.8%	24.9%	215	13.3	7.5
School Type								
High School	3,702	60.0%	3.19	40.4%	27.8%	220	13.1	--
2yr College	2,375	38.5%	3.09	36.8%	21.1%	207	--	7.9
4yr College/Univ.	86	1.4%	3.31	44.2%	32.6%	221	--	--
Unknown	7	0.1%	2.95	14.3%	28.6%	221	--	--
First Generation College Status								
First Generation	1,995	32.3%	3.06	37.3%	18.8%	213	13.5	7.9
Not First Generation	4,175	67.7%	3.20	39.9%	28.4%	216	12.9	7.9
Income								
High: > \$98,401	1,494	24.2%	3.25	41.2%	31.4%	216	12.6	7.3
Medium High: \$65,601 - \$98,400	630	10.2%	3.17	38.3%	27.5%	217	12.9	7.8
Medium Low: \$32,801 - \$65,600	1,194	19.4%	3.09	39.5%	20.6%	216	13.2	8.2
Low: < \$32,800	1,379	22.4%	3.03	39.4%	15.3%	215	13.7	8.1
Missing/Undeclared	1,473	23.9%	3.21	36.3%	31.3%	214	12.9	8.0
Total Population	6,170	100.0%	3.15	39.0%	25.3%	215	13.1	7.9

The majority of Bachelor degree recipients are women (52%).

Social science majors account for almost one-half (48%) of the undergraduate degree recipients, followed by biology majors (20%).

Approximately, 64% of the undergraduate degree recipients graduated with GPA of 3.0 ('B') or higher. Approximately, 25% graduated with a GPA of 'B+' or higher.

² For Transfer students, time-to-degree is calculated only for those students who matriculate from a two-year community college (C.C.). The typical community college transfer student enters UCSD with 90 units of transferable academic credit.

On average, first-time freshmen take just over four years (13.0 quarters) to graduate. Community College transfer students tend to graduate in approximately three years or 8 quarters.

Profile of Bachelor Degree Recipients Majoring in the Arts: 2012/2013



Student Characteristics	N	%	Academic Profile				Time-to-Degree	
			GPA Mean	% GPA 3.0 - 3.5	% GPA ≥ 3.5	Units Mean	Freshmen Mean	C.C. Transfer Mean
Gender								
Female	113	54.3%	3.45	39.8%	49.6%	218	13.3	8.3
Male	95	45.7%	3.29	46.3%	31.6%	213	14.6	8.4
Ethnicity								
African Am.	4	1.9%	3.43	50.0%	50.0%	214	16.0	7.0
Asian	56	26.9%	3.30	60.7%	25.0%	223	13.3	8.0
Mexican Am.	23	11.1%	3.28	43.5%	34.8%	214	15.6	8.4
Filipino	17	8.2%	3.30	52.9%	23.5%	216	15.0	7.7
Latino	8	3.8%	3.47	12.5%	62.5%	202	14.0	8.0
Native Am.	1	0.5%	2.67	0.0%	0.0%	190	13.0	--
Caucasian	78	37.5%	3.46	34.6%	55.1%	215	13.7	8.7
Other	21	10.1%	3.43	28.6%	47.6%	211	13.5	8.5
College								
Revelle	9	4.3%	3.21	66.7%	11.1%	242	15.0	10.0
Muir	49	23.6%	3.47	36.7%	55.1%	214	12.7	8.9
Marshall	28	13.5%	3.31	35.7%	39.3%	218	14.1	8.8
Warren	19	9.1%	3.37	52.6%	36.8%	218	13.8	7.3
Roosevelt	35	16.8%	3.35	45.7%	37.1%	217	14.6	8.3
Sixth	68	32.7%	3.37	42.6%	39.7%	212	13.9	7.9
School Type								
High School	97	46.6%	3.30	51.5%	32.0%	222	13.9	--
2yr College	110	52.9%	3.44	35.5%	49.1%	211	--	8.3
4yr College/Univ.	1	0.5%	3.87	0.0%	100.0%	207	--	--
Unknown	0	0.0%	--	--	--	--	--	--
First Generation College Status								
First Generation	58	27.9%	3.31	48.3%	34.5%	215	14.8	9.0
Not First Generation	150	72.1%	3.40	40.7%	44.0%	216	13.5	8.1
Income								
High: > \$98,401	49	23.6%	3.42	46.9%	40.8%	209	13.3	8.0
Medium High: \$65,601 - \$98,400	22	10.6%	3.44	40.9%	45.5%	222	12.9	7.4
Medium Low: \$32,801 - \$65,600	34	16.3%	3.29	55.9%	26.5%	228	14.5	9.6
Low: < \$32,800	42	20.2%	3.19	52.4%	21.4%	220	14.6	8.4
Missing/Undeclared	61	29.3%	3.50	26.2%	62.3%	211	13.1	8.3
Total Arts	208	100.0%	3.38	42.8%	41.3%	216	13.9	8.3

* Five or fewer cases.

Bachelor Degrees in the Arts: Trends Profile - 2002/2003 to 2011/2012

Student Characteristics	N	%	Academic Profile				Time-to-Degree	
			GPA Mean	% GPA 3.0 - 3.5	% GPA ≥ 3.5	Units Mean	Freshmen Mean	C.C. Transfer Mean
Award Year								
2011/2012	225	100.0%	3.34	43%	37%	214	13.1	7.9
2010/2011	256	100.0%	3.39	46%	42%	215	13.3	8.5
2009/2010	219	100.0%	3.39	48%	38%	213	13.1	8.4
2008/2009	249	100.0%	3.31	48%	34%	210	13.6	8.1
2007/2008	232	100.0%	3.35	47%	37%	213	13.8	8.5
2006/2007	257	100.0%	3.35	51%	34%	211	13.9	8.3
2005/2006	280	100.0%	3.36	49%	38%	208	13.4	8.2
2004/2005	296	100.0%	3.29	52%	30%	208	13.4	8.1
2003/2004	281	100.0%	3.34	44%	38%	211	13.8	8.0
2002/2003	300	100.0%	3.27	52%	26%	207	13.9	8.1

The majority (57%) of the students graduating with a degree in arts were female.

Sixth College awarded the largest number of Bachelor's degrees in arts compared to the other five colleges.

Relative to other disciplinary areas, a larger percentage (84%) of arts majors graduated with a GPA of 'B' or higher. The average GPA for arts majors was 3.38, respectively.



Profile of Bachelor Degree Recipients Majoring in the Humanities: 2012/2013

Student Characteristics	N	%	Academic Profile				Time-to-Degree	
			GPA Mean	% GPA 3.0 - 3.5	% GPA ≥ 3.5	Units Mean	Freshmen Mean	C.C. Transfer Mean
Gender								
Female	133	55.6%	3.30	37.6%	39.8%	214	13.4	8.1
Male	106	44.4%	3.20	46.2%	23.6%	201	14.4	7.8
Ethnicity								
African Am.	10	4.2%	3.15	50.0%	20.0%	210	13.3	9.3
Asian	47	19.7%	3.21	40.4%	31.9%	216	13.3	9.1
Mexican Am.	41	17.2%	3.08	39.0%	19.5%	208	15.6	8.2
Filipino	8	3.3%	3.16	62.5%	12.5%	212	12.8	6.8
Latino	11	4.6%	3.22	27.3%	45.5%	195	12.7	7.1
Native Am.	3	1.3%	3.41	66.7%	33.3%	217	--	7.3
Caucasian	95	39.7%	3.34	38.9%	38.9%	202	13.6	7.7
Other	24	10.0%	3.36	50.0%	37.5%	226	13.5	8.1
College								
Revelle	20	8.4%	2.97	25.0%	20.0%	220	13.8	8.5
Muir	51	21.3%	3.26	45.1%	29.4%	205	12.7	9.0
Marshall	50	20.9%	3.30	46.0%	34.0%	208	14.4	7.7
Warren	35	14.6%	3.24	51.4%	25.7%	203	13.4	7.2
Roosevelt	54	22.6%	3.29	35.2%	40.7%	212	14.3	7.5
Sixth	29	12.1%	3.29	37.9%	37.9%	209	13.7	7.9
School Type								
High School	108	45.2%	3.24	38.9%	34.3%	216	13.7	--
2yr College	126	52.7%	3.28	43.7%	31.7%	202	--	7.9
4yr College/Univ.	3	1.3%	3.31	66.7%	33.3%	218	--	--
Unknown	2	0.8%	2.39	0.0%	0.0%	197	--	--
First Generation College Status								
First Generation	85	35.6%	3.28	42.4%	35.3%	206	13.7	7.7
Not First Generation	154	64.4%	3.24	40.9%	31.2%	210	13.7	8.1
Income								
High: > \$98,401	48	20.1%	3.39	47.9%	41.7%	206	13.5	7.8
Medium High: \$65,601 - \$98,400	26	10.9%	3.19	38.5%	30.8%	210	14.6	6.9
Medium Low: \$32,801 - \$65,600	33	13.8%	3.08	39.4%	21.2%	209	12.8	9.5
Low: < \$32,800	42	17.6%	3.13	40.5%	23.8%	214	14.5	6.9
Missing/Undeclared	90	37.7%	3.32	40.0%	36.7%	207	13.4	8.1
Total Humanities	239	100.0%	3.25	41.4%	32.6%	209	13.7	7.9

* Five or fewer cases.

Bachelor Degrees in the Humanities: Trends Profile - 2002/2003 to 2011/2012

Student Characteristics	N	%	Academic Profile				Time-to-Degree	
			GPA Mean	% GPA 3.0 - 3.5	% GPA ≥ 3.5	Units Mean	Freshmen Mean	C.C. Transfer Mean
Award Year								
2011/2012	292	100.0%	3.23	40%	31%	210	13.1	8.5
2010/2011	260	100.0%	3.30	48%	31%	209	12.8	7.2
2009/2010	255	100.0%	3.25	43%	29%	207	12.7	8.3
2008/2009	260	100.0%	3.19	43%	25%	206	13.0	7.6
2007/2008	291	100.0%	3.25	45%	31%	211	12.7	8.1
2006/2007	262	100.0%	3.19	45%	24%	205	13.0	7.7
2005/2006	280	100.0%	3.25	46%	29%	204	12.8	8.2
2004/2005	259	100.0%	3.24	45%	29%	203	12.8	8.4
2003/2004	253	100.0%	3.22	47%	28%	204	13.1	7.7
2002/2003	226	100.0%	3.17	43%	24%	205	13.4	8.0

The majority (56%) of students earning a Bachelor's degree in humanities were female.

Muir (N=51) and Marshall (N=50) awarded the largest number of humanities degrees in 2012/2013.

Almost three-quarters (74%) of humanities majors graduated with a GPA of 'B' or higher; the mean GPA was 3.25, respectively.



Profile of Bachelor Degree Recipients Majoring in Engineering: 2012/2013

Over three-quarters (78%) of all engineering degrees were awarded to males.

Warren College continues to award the largest proportion (30%) of Bachelor's degrees in engineering.

Approximately, 62% of engineering majors graduated with a GPA of 'B' or higher; the average GPA for graduating engineering students was 3.13, respectively.

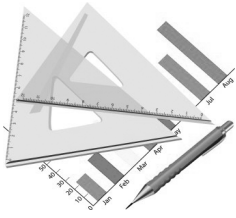
Student Characteristics	N	%	Academic Profile				Time-to-Degree	
			GPA Mean	% GPA 3.0 - 3.5	% GPA ≥ 3.5	Units Mean	Freshmen Mean	C.C. Transfer Mean
Gender								
Female	232	22.1%	3.15	40.9%	21.6%	243	13.6	9.5
Male	820	77.9%	3.13	41.0%	21.3%	235	13.6	9.5
Ethnicity								
African Am.	10	1.0%	3.05	30.0%	20.0%	244	14.9	9.0
Asian	378	35.9%	3.03	43.7%	11.6%	235	13.6	9.6
Mexican Am.	91	8.7%	2.96	40.7%	8.8%	237	14.7	10.5
Filipino	48	4.6%	2.97	39.6%	8.3%	231	14.3	9.9
Latino	33	3.1%	3.11	30.3%	24.2%	239	14.3	9.1
Native Am.	3	0.3%	3.06	33.3%	33.3%	220	15.0	--
Caucasian	239	22.7%	3.16	42.3%	21.3%	235	13.7	9.3
Other	250	23.8%	3.35	38.0%	42.8%	240	12.8	8.9
College								
Revelle	162	15.4%	3.11	42.6%	18.5%	245	13.8	9.8
Muir	149	14.2%	3.16	40.3%	24.2%	235	13.3	9.2
Marshall	135	12.8%	3.11	43.7%	18.5%	234	13.6	9.4
Warren	313	29.8%	3.14	39.6%	23.0%	232	13.3	9.7
Roosevelt	97	9.2%	3.08	46.4%	14.4%	239	13.7	9.7
Sixth	196	18.6%	3.15	37.8%	24.5%	238	13.9	9.1
School Type								
High School	722	68.6%	3.14	39.5%	23.3%	236	13.6	--
2yr College	315	29.9%	3.09	43.2%	16.8%	237	--	9.5
4yr College/Univ.	14	1.3%	3.35	64.3%	28.6%	239	--	--
Unknown	1	0.1%	3.48	100.0%	0.0%	196	--	--
First Generation College Status								
First Generation	291	27.7%	3.06	38.5%	17.2%	235	14.1	9.5
Not First Generation	761	72.3%	3.16	41.9%	23.0%	237	13.4	9.5
Income								
High: > \$98,401	276	26.2%	3.22	45.3%	25.7%	237	13.0	9.3
Medium High: \$65,601 - \$98,400	108	10.3%	3.12	38.9%	20.4%	238	13.4	9.4
Medium Low: \$32,801 - \$65,600	189	18.0%	3.08	40.2%	15.9%	235	13.9	9.5
Low: < \$32,800	210	20.0%	3.01	35.7%	16.2%	236	14.4	10.0
Missing/Undeclared	269	25.6%	3.18	42.0%	25.3%	237	13.4	9.3
Total Engineering	1,052	100.0%	3.13	41.0%	21.4%	236	13.6	9.5

* Five or fewer cases.

Bachelor Degrees in Engineering: Trends Profile - 2002/2003 to 2011/2012

Student Characteristics	N	%	Academic Profile				Time-to-Degree	
			GPA Mean	% GPA 3.0 - 3.5	% GPA ≥ 3.5	Units Mean	Freshmen Mean	C.C. Transfer Mean
Award Year								
2011/2012	896	100.0%	3.14	39%	23%	236	13.6	9.5
2010/2011	818	100.0%	3.13	41%	21%	236	13.6	9.7
2009/2010	756	100.0%	3.18	41%	26%	236	13.4	10.3
2008/2009	747	100.0%	3.11	40%	21%	236	13.8	10.2
2007/2008	763	100.0%	3.12	40%	20%	235	13.7	10.2
2006/2007	814	100.0%	3.11	38%	21%	234	13.9	9.7
2005/2006	933	100.0%	3.11	38%	20%	232	13.7	9.6
2004/2005	998	100.0%	3.14	41%	22%	230	13.4	9.3
2003/2004	654	100.0%	3.10	40%	19%	228	13.9	10.0
2002/2003	674	100.0%	3.11	38%	21%	227	13.9	9.8

Profile of Bachelor Degree Recipients Majoring in Science and Math: 2012/2013



Approximately, the same proportion of science/math degrees were awarded both to males (50%) and females (50%).

Approximately, the same proportion of science/math degrees were awarded by Revelle College (19%) and Muir College (19%).

Approximately, 62% of science/math majors graduated with a GPA of 'B' or higher; twenty-six percent graduated with a GPA of 'B+' or higher.

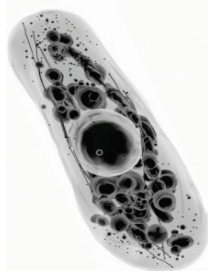
Student Characteristics	N		Academic Profile				Time-to-Degree	
			GPA Mean	% GPA 3.0 - 3.5	% GPA ≥ 3.5	Units Mean	Freshmen Mean	C.C. Transfer Mean
Gender								
Female	262	50.2%	3.14	39.7%	23.7%	222	12.7	8.0
Male	260	49.8%	3.14	33.1%	27.7%	220	13.0	8.7
Ethnicity								
African Am.	8	1.5%	2.94	50.0%	0.0%	204	13.5	6.8
Asian	224	42.9%	3.11	35.7%	23.7%	222	12.6	7.8
Mexican Am.	32	6.1%	2.90	34.4%	9.4%	220	14.3	9.7
Filipino	20	3.8%	3.04	30.0%	20.0%	219	13.6	8.6
Latino	6	1.1%	3.29	16.7%	50.0%	226	13.3	8.0
Native Am.	2	0.4%	2.97	50.0%	0.0%	200	--	7.0
Caucasian	117	22.4%	3.18	42.7%	23.1%	221	12.9	8.7
Other	113	21.6%	3.25	32.7%	38.9%	220	12.8	8.8
College								
Revelle	101	19.3%	3.10	33.7%	26.7%	225	13.0	8.9
Muir	92	17.6%	3.14	39.1%	26.1%	226	12.9	8.7
Marshall	99	19.0%	3.15	30.3%	26.3%	213	12.8	7.7
Warren	91	17.4%	3.18	38.5%	28.6%	221	12.8	8.8
Roosevelt	61	11.7%	3.06	32.8%	21.3%	220	13.0	8.1
Sixth	78	14.9%	3.18	44.9%	23.1%	221	12.8	8.1
School Type								
High School	346	66.3%	3.19	39.0%	28.0%	224	12.9	--
2yr College	170	32.6%	3.03	31.8%	20.6%	214	--	8.4
4yr College/Univ.	5	1.0%	3.31	20.0%	40.0%	246	--	--
Unknown	1	0.2%	2.47	0.0%	0.0%	292	--	--
First Generation College Status								
First Generation	194	37.2%	3.06	36.1%	19.1%	220	12.9	8.5
Not First Generation	328	62.8%	3.19	36.6%	29.6%	222	12.9	8.3
Income								
High: > \$98,401	115	22.0%	3.25	37.4%	36.5%	224	12.6	9.0
Medium High: \$65,601 - \$98,400	55	10.5%	3.25	34.5%	34.5%	218	12.9	7.3
Medium Low: \$32,801 - \$65,600	117	22.4%	3.05	40.2%	17.1%	220	12.8	8.4
Low: < \$32,800	129	24.7%	3.05	37.2%	18.6%	222	13.1	8.6
Missing/Undeclared	106	20.3%	3.14	31.1%	27.4%	218	13.0	8.4
Total Science/Math	522	100.0%	3.14	36.4%	25.7%	221	12.9	8.4

* Five or fewer cases.

Bachelor Degrees in Science and Math: Trends Profile - 2002/2003 to 2011/2012

Student Characteristics	N		Academic Profile				Time-to-Degree	
			GPA Mean	% GPA 3.0 - 3.5	% GPA ≥ 3.5	Units Mean	Freshmen Mean	C.C. Transfer Mean
Award Year								
2011/2012	409	100.0%	3.14	40%	23%	225	13.2	8.6
2010/2011	413	100.0%	3.10	39%	23%	226	13.4	8.8
2009/2010	368	100.0%	3.17	39%	26%	220	12.9	8.5
2008/2009	395	100.0%	3.10	41%	20%	219	13.6	8.2
2007/2008	360	100.0%	3.10	38%	24%	219	13.4	8.5
2006/2007	339	100.0%	3.07	40%	20%	217	13.3	8.4
2005/2006	310	100.0%	3.15	41%	24%	218	13.1	8.4
2004/2005	327	100.0%	3.10	36%	24%	220	13.5	8.7
2003/2004	259	100.0%	3.08	37%	22%	216	13.5	8.4
2002/2003	252	100.0%	3.08	33%	23%	214	13.4	8.4

Profile of Bachelor Degree Recipients Majoring in Biology: 2012/2013



Student Characteristics	N		Academic Profile				Time-to-Degree	
	N	%	GPA Mean	% GPA 3.0 - 3.5	% GPA ≥ 3.5	Units Mean	Freshmen Mean	C.C. Transfer Mean
Gender								
Female	696	57.3%	3.17	39.1%	26.0%	220	13.0	8.3
Male	519	42.7%	3.24	33.9%	36.2%	219	13.0	8.9
Ethnicity								
African Am.	17	1.4%	2.98	58.8%	0.0%	219	13.8	10.1
Asian	489	40.2%	3.12	39.1%	22.5%	219	13.1	8.3
Mexican Am.	72	5.9%	2.99	29.2%	16.7%	220	14.1	9.5
Filipino	61	5.0%	2.99	36.1%	11.5%	216	13.1	8.7
Latino	24	2.0%	3.05	37.5%	20.8%	212	13.2	8.1
Native Am.	4	0.3%	3.11	25.0%	25.0%	216	14.5	9.0
Caucasian	210	17.3%	3.14	44.3%	22.9%	215	12.9	8.4
Other	338	27.8%	3.45	29.9%	55.0%	225	12.4	8.7
College								
Revelle	288	23.7%	3.23	40.3%	31.2%	222	12.9	8.8
Muir	210	17.3%	3.23	34.3%	35.7%	224	12.9	8.4
Marshall	239	19.7%	3.22	38.1%	29.7%	211	12.6	8.1
Warren	201	16.5%	3.20	36.3%	31.3%	221	12.9	9.0
Roosevelt	154	12.7%	3.11	33.8%	24.0%	223	13.3	9.5
Sixth	123	10.1%	3.15	35.8%	26.8%	217	13.6	7.7
School Type								
High School	891	73.3%	3.25	38.9%	32.9%	222	13.0	--
2yr College	308	25.3%	3.07	30.8%	23.1%	212	--	8.6
4yr College/Univ.	15	1.2%	3.23	40.0%	26.7%	231	--	--
Unknown	1	0.1%	3.74	0.0%	100.0%	214	--	--
First Generation College Status								
First Generation	357	29.4%	3.07	36.4%	19.3%	217	13.4	8.5
Not First Generation	858	70.6%	3.26	37.1%	35.0%	221	12.8	8.6
Income								
High: > \$98,401	325	26.7%	3.31	36.9%	38.8%	219	12.6	7.6
Medium High: \$65,601 - \$98,400	127	10.5%	3.16	43.3%	22.0%	221	12.7	9.0
Medium Low: \$32,801 - \$65,600	256	21.1%	3.17	37.9%	28.9%	223	13.3	8.8
Low: < \$32,800	267	22.0%	3.05	37.8%	17.6%	216	13.5	8.3
Missing/Undeclared	240	19.8%	3.27	31.2%	39.2%	221	12.5	9.2
Total Biology	1,215	100.0%	3.20	36.9%	30.4%	220	13.0	8.6

* Five or fewer cases.

Bachelor Degrees in Biology: Trends Profile - 2002/2003 to 2011/2012

Student Characteristics	N		Academic Profile				Time-to-Degree	
	N	%	GPA Mean	% GPA 3.0 - 3.5	% GPA ≥ 3.5	Units Mean	Freshmen Mean	C.C. Transfer Mean
Award Year								
2011/2012	1,478	100.0%	3.15	39%	25%	218	12.9	8.3
2010/2011	1,483	100.0%	3.15	41%	24%	218	12.9	8.4
2009/2010	1,268	100.0%	3.17	42%	25%	218	12.8	8.3
2008/2009	1,173	100.0%	3.13	40%	23%	215	12.9	7.9
2007/2008	1,113	100.0%	3.15	39%	24%	215	12.8	7.9
2006/2007	939	100.0%	3.17	38%	27%	215	12.8	8.1
2005/2006	906	100.0%	3.17	37%	27%	214	12.9	8.0
2004/2005	752	100.0%	3.14	39%	25%	213	12.9	8.6
2003/2004	661	100.0%	3.12	35%	25%	213	13.2	8.6
2002/2003	742	100.0%	3.13	39%	24%	211	13.2	8.6

The majority of biology degrees were awarded to females (57%).

Revelle College awarded the largest proportion (24%) of biology degrees, followed by Marshall College (20%).

Approximately, 67% of biology majors graduated with a GPA of 'B' or higher; thirty percent graduated with a GPA of 'B+' or higher.

Profile of Bachelor Degree Recipients Majoring in the Social Sciences: 2012/2013



The majority of social science degree recipients were female (61%).

The average grade point average for the 2012/2013 social science degree recipients was 3.12.

Approximately, 62% of social science majors graduated with a GPA of 3.0 or higher; twenty-three percent graduated with a GPA of 3.5 or higher.

Student Characteristics	N	%	Academic Profile				Time-to-Degree	
			GPA Mean	% GPA 3.0 - 3.5	% GPA ≥ 3.5	Units Mean	Freshmen Mean	C.C. Transfer Mean
Gender								
Female	1,775	60.6%	3.15	39.7%	24.7%	205	12.7	7.1
Male	1,154	39.4%	3.07	38.4%	19.8%	205	13.2	7.5
Ethnicity								
African Am.	52	1.8%	3.09	57.7%	11.5%	211	13.8	7.6
Asian	1,251	42.7%	3.06	40.5%	17.2%	205	12.8	7.1
Mexican Am.	334	11.4%	3.04	37.1%	16.8%	203	13.7	7.6
Filipino	100	3.4%	3.09	43.0%	17.0%	206	13.3	7.3
Latino	109	3.7%	3.01	39.4%	11.0%	200	13.6	7.4
Native Am.	18	0.6%	3.12	22.2%	27.8%	208	13.9	8.3
Caucasian	747	25.5%	3.24	37.6%	33.2%	203	12.7	7.2
Other	318	10.9%	3.20	36.2%	34.0%	212	12.5	7.9
College								
Revelle	241	8.2%	3.02	33.2%	18.7%	215	13.4	8.5
Muir	527	18.0%	3.13	41.2%	22.6%	205	12.9	7.4
Marshall	669	22.8%	3.13	39.6%	22.3%	201	12.8	7.0
Warren	454	15.5%	3.08	37.2%	22.2%	203	12.6	7.5
Roosevelt	605	20.7%	3.16	39.7%	26.3%	208	13.0	7.4
Sixth	433	14.8%	3.12	40.6%	21.7%	204	12.9	6.9
School Type								
High School	1,534	52.4%	3.17	41.3%	26.2%	211	12.9	--
2yr College	1,345	45.9%	3.05	36.7%	18.4%	198	--	7.3
4yr College/Univ.	48	1.6%	3.31	41.7%	33.3%	211	--	--
Unknown	2	0.1%	3.09	0.0%	50.0%	225	--	--
First Generation College Status								
First Generation	1,010	34.5%	3.02	36.4%	16.7%	204	13.3	7.2
Not First Generation	1,919	65.5%	3.17	40.6%	26.0%	206	12.6	7.3
Income								
High: > \$98,401	680	23.2%	3.21	41.3%	27.9%	205	12.2	6.8
Medium High: \$65,601 - \$98,400	292	10.0%	3.16	36.3%	29.5%	207	12.6	7.2
Medium Low: \$32,801 - \$65,600	565	19.3%	3.06	38.9%	18.8%	205	12.9	7.6
Low: < \$32,800	687	23.5%	3.00	40.6%	12.7%	207	13.5	7.5
Missing/Undeclared	705	24.1%	3.17	37.0%	28.1%	204	12.8	7.4
Total Social Sciences	2,929	100.0%	3.12	39.2%	22.8%	205	12.9	7.3

* Five or fewer cases.

Bachelor Degrees in Social Sciences: Trends Profile - 2002/2003 to 2011/2012

Student Characteristics	N	%	Academic Profile				Time-to-Degree	
			GPA Mean	% GPA 3.0 - 3.5	% GPA ≥ 3.5	Units Mean	Freshmen Mean	C.C. Transfer Mean
Award Year								
2011/2012	3,034	100.0%	3.13	40%	23%	204	12.9	7.1
2010/2011	2,906	100.0%	3.12	41%	21%	203	12.8	7.1
2009/2010	2,816	100.0%	3.11	40%	22%	203	12.6	7.4
2008/2009	2,499	100.0%	3.10	40%	21%	202	12.8	7.2
2007/2008	2,577	100.0%	3.12	43%	20%	201	12.7	7.5
2006/2007	2,446	100.0%	3.12	42%	21%	201	12.8	7.0
2005/2006	2,486	100.0%	3.15	42%	22%	200	12.6	7.3
2004/2005	2,406	100.0%	3.12	43%	20%	199	12.8	7.1
2003/2004	2,022	100.0%	3.14	42%	22%	199	13.0	7.3
2002/2003	2,051	100.0%	3.10	42%	19%	198	13.0	7.5



Degrees Conferred is an annual publication of the
Office of Student Research & Information,
Student Affairs, 858-534-2382.
This document is also available on the
World Wide Web at:
studentresearch.ucsd.edu