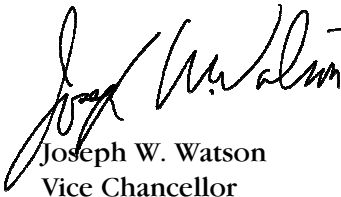

■ INTRODUCTION


The *Student Digest*, published annually by the Office of Student Research and Information, provides the campus community with a broad overview of trends in undergraduate enrollments, academic performance and graduation statistics. If you have questions or comments regarding this publication, please contact the Office of Student Research and Information/Student Affairs at (619) 534-6309. If you wish to view this report and other statistical reports, they can be found on the World Wide Web at <http://ugr8.ucsd.edu>.



Joseph W. Watson
Vice Chancellor

■Table of Contents

Total Campus Enrollment	3
Total Campus Population Summary	4
Total Undergraduate Enrollment	5
By Class Level	6
By Gender	7
By Ethnicity	8
By Major Field of Study	9
By Major Department	10
By College	11
Academic Profile: Undergraduates	12
Total Undergraduate Population Summary	13
By Class Level	14
By Major Field of Study	15
New Students	16
New Student Enrollments	17
First-Time Freshmen	18
Applicants, Admits & Registered	19
By Gender	20
By Ethnicity	21
By Major Field of Study	22
by Major Department at Time of Admission	23
By College & Home Location	24
Major Feeder High Schools	25
High School Grades and SAT Scores	26
Indicators of Academic Preparation	27
High School GPA by Gender, Ethnicity, Major Field of Study, and Home Location	28
SAT I Scores by Gender, Ethnicity, Major Field of Study, and Home Location	29
UCSD/UC Systemwide Comparison	30
New Transfer Students	31
Applicants, Admits & Registered	32
By Gender	33
By Ethnicity	34
By Major Field of Study	35
By Transfer Institution & Home Location	36
By Undergraduate College	37
Major Feeder Transfer Institutions	38
New Transfer Student Academic Preparation	39
Indicators of Academic Preparation	40
Degrees Conferred	41
All Degree Types	42
Bachelor Degrees by Gender	43
Bachelor Degrees by Ethnicity	44
Bachelor Degrees by Major Field of Study & College	45
Time-to-Degree/Academic Performance for Students Who Entered UCSD from High School	46
Time-to-Degree/Academic Performance for Students Who Entered UCSD from a Two-Year Community College	47
Appendix: Undergraduate Major Fields of Study/ Academic Departments	48



**■ Total
Campus
Enrollment**

■ TOTAL CAMPUS ENROLLMENT

More than twenty thousand students are enrolled at UCSD. The campus is currently host to over three thousand graduate and medical students, and over sixteen thousand undergraduates.

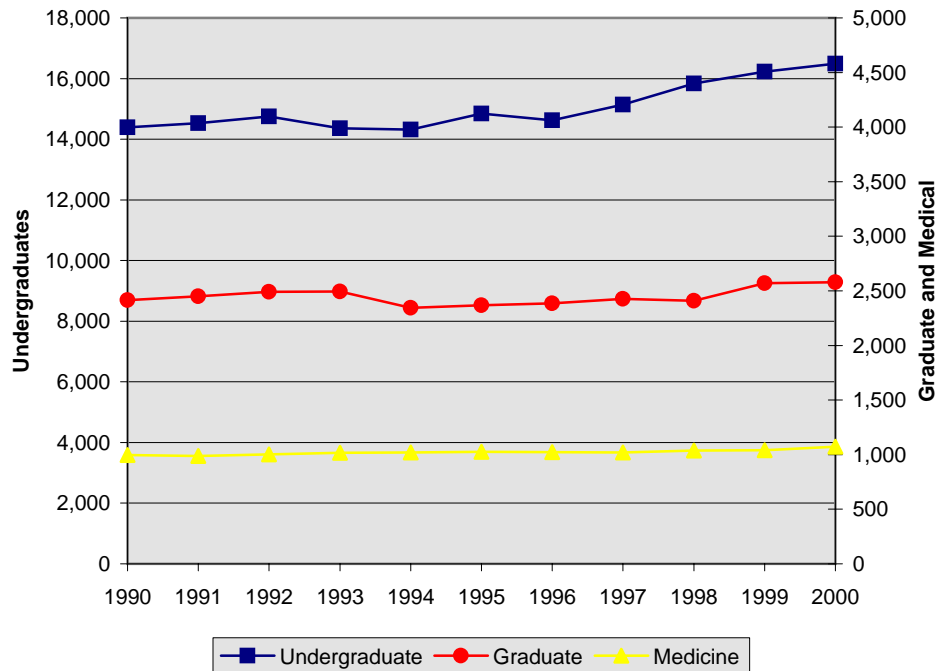
Table 1.

Total Campus Enrollment: The Past Decade Fall Quarter

UCSD Enrollment	1990	1995	1996	1997	1998	1999	2000	10 Year Δ
• Undergraduate	14,392	14,846	14,623	15,140	15,837	16,230	16,496	+15%
• Graduate	2,318	2,369	2,386	2,427	2,408	2,570	2,579	+11%
• Teacher Education Program (TEP)	98	82	87	81	88	78	64	-35%
• Medicine	997	1,027	1,023	1,019	1,037	1,040	1,073	+8%
Total Campus Enrollment	17,805	18,324	18,119	18,667	19,370	19,918	20,212	+14%

Figure 1.

Total Campus Enrollment: The Past Decade Fall Quarter





■ **Total
Undergraduate
Enrollment**

■ Undergraduate Enrollment

Undergraduate enrollments have increased by more than two thousand students over the past ten years. Currently, 40% of all undergraduates are lower division students; 60% are upper division.

Table 2.

Undergraduate Enrollment by Class Level								Fall Quarter
The Undergraduates	1990	1995	1996	1997	1998	1999	2000	10 Year Δ
• Lower Division	6,620 (46%)	6,249 (42%)	5,836 (40%)	6,246 (41%)	6,809 (43%)	6,811 (42%)	6,557 (40%)	-1%
Freshman	3,464	3,610	3,140	3,620	3,770	3,651	3,366	-3%
Sophomore	3,156	2,639	2,969	2,626	3,039	3,160	3,191	+1%
• Upper Division	7,772 (54%)	8,597 (58%)	8,514 (58%)	8,894 (59%)	9,028 (57%)	9,419 (58%)	9,939 (60%)	+28%
Junior	3,620	3,792	3,773	4,175	3,875	4,319	4,640	+28%
Senior	4,152	4,805	4,741	4,719	5,153	5,100	5,299	+28%
Total UG Enrollment	14,392	14,846	14,623	15,140	15,837	16,230	16,496	+15%

Figure 2.

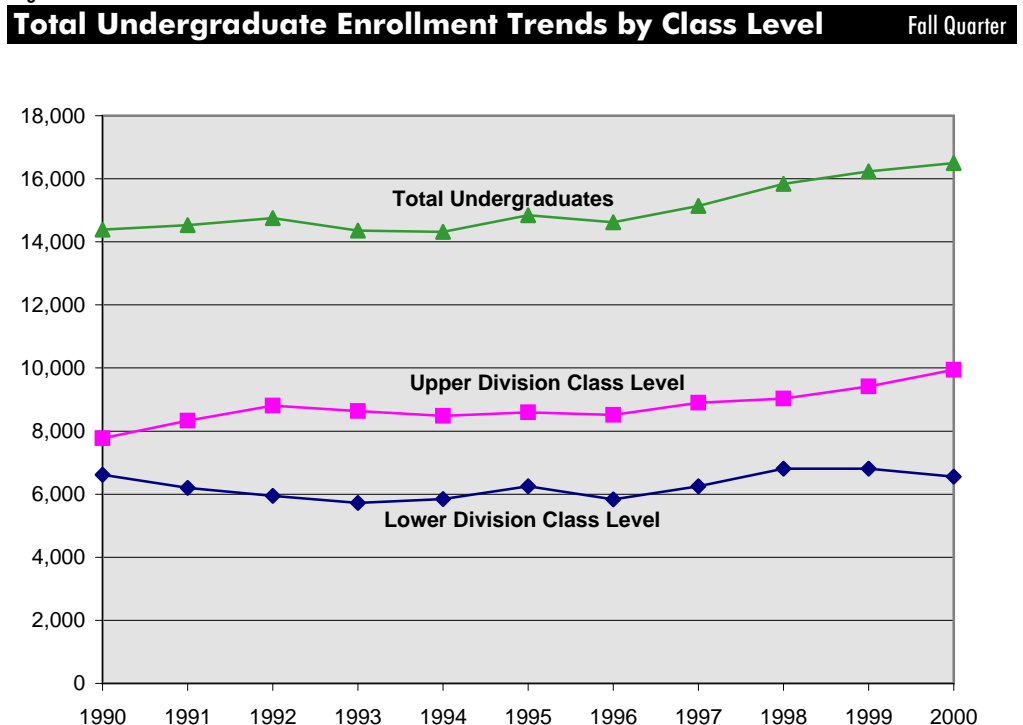


Table 3.

Undergraduates by Gender Fall Quarter

Gender	1990	1995	1996	1997	1998	1999	2000	10 Year Δ
• Male	7,581 (53%)	7,505 (51%)	7,322 (50%)	7,436 (49%)	7,683 (49%)	7,759 (48%)	7,891 (48%)	+4%
• Female	6,811 (47%)	7,341 (49%)	7,301 (50%)	7,704 (51%)	8,154 (51%)	8,471 (52%)	8,605 (52%)	+26%
Total UG Enrollment	14,392	14,846	14,623	15,140	15,837	16,230	16,496	+15%

**Women
currently
outnumber
men among
degree seeking
under-
graduates on
the
San Diego
campus.**

Figure 3.

Undergraduate Enrollment by Gender Fall Quarter

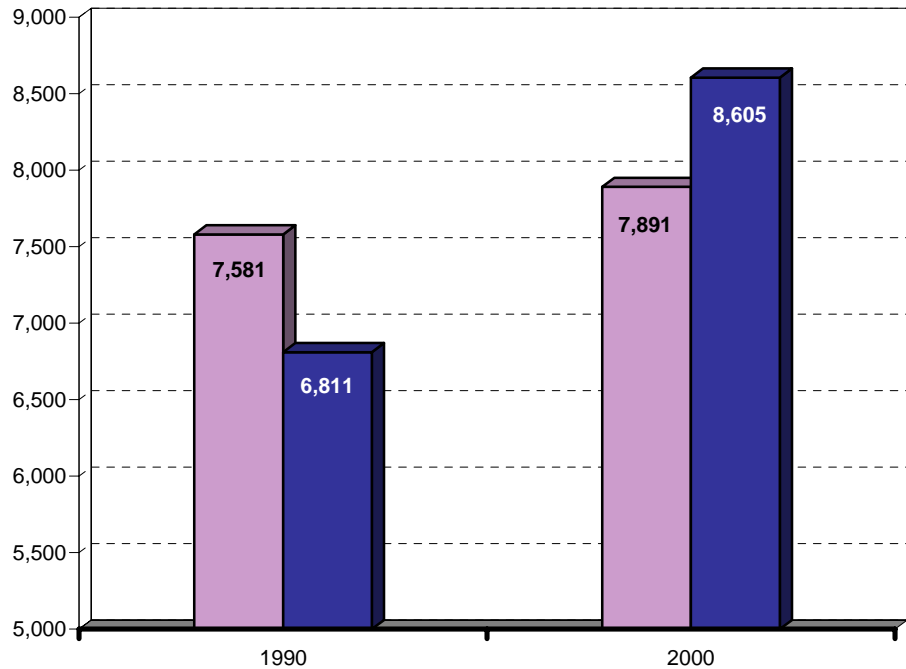


Table 4.

Undergraduates by Ethnicity Fall Quarter

Ethnicity	1990	1995	1996	1997	1998	1999	2000	10 Year Δ
• African-American	404 (3%)	324 (2%)	299 (2%)	303 (2%)	277 (2%)	257 (2%)	224 (1%)	-45%
• Mexican-American	1,015 (7%)	1,344 (9%)	1,300 (9%)	1,303 (9%)	1,216 (8%)	1,226 (8%)	1,282 (8%)	+26%
• Native-American	121 (1%)	125 (1%)	122 (1%)	139 (1%)	134 (1%)	119 (1%)	99 (1%)	-18%
• Asian	2,315 (16%)	3,964 (27%)	4,139 (28%)	4,399 (29%)	4,632 (29%)	4,802 (30%)	4,948 (30%)	+114%
• Caucasian	8,541 (59%)	6,623 (45%)	6,231 (43%)	6,298 (42%)	6,323 (40%)	6,403 (39%)	6,429 (39%)	-25%
• Filipino	598 (4%)	747 (5%)	803 (5%)	831 (5%)	874 (6%)	869 (5%)	850 (5%)	+42%
• Latino	435 (3%)	318 (2%)	316 (2%)	321 (2%)	339 (2%)	350 (2%)	374 (2%)	-14%
• Other/Undeclared	963 (7%)	1,401 (9%)	1,413 (10%)	1,546 (10%)	2,042 (13%)	2,204 (13%)	2,290 (14%)	+138%
Total UG Enrollment	14,392	14,846	14,623	15,140	15,837	16,230	16,496	+15%

Compared to 1990, there are substantially more Mexican American, Asian, and Filipino students among the undergraduate population. On the other hand, there are fewer African American, Caucasian, and Latino students.

Figure 4.

Undergraduate Enrollment by Ethnicity Fall Quarter

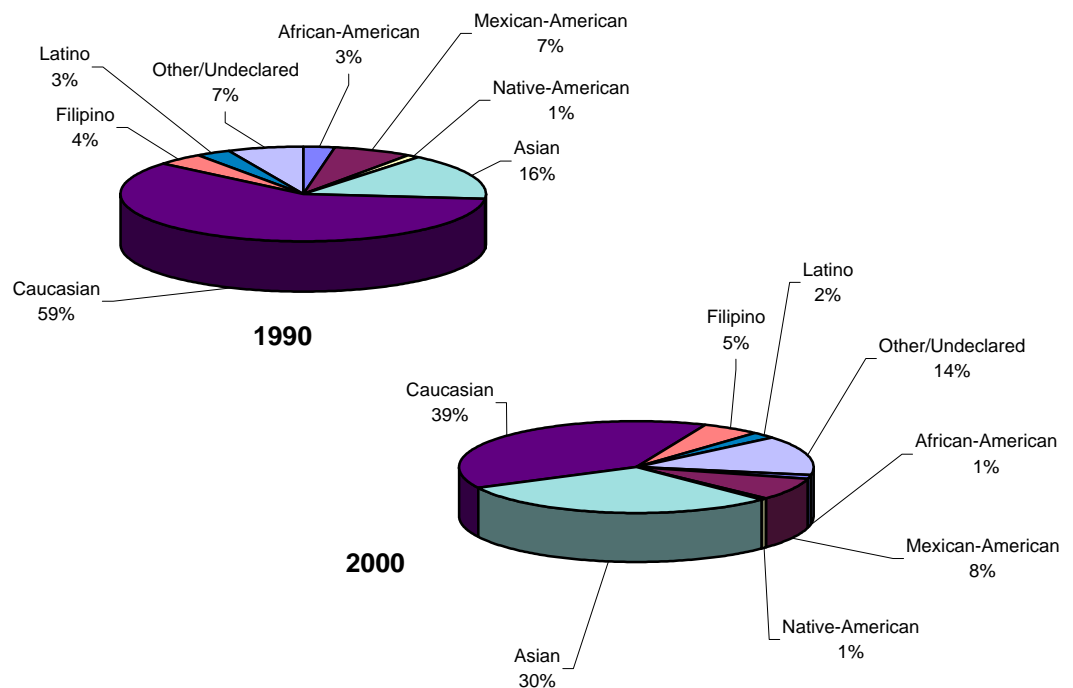


Table 5.

Undergraduates by Major Field of Study Fall Quarter

Major Field of Study	1990	1995	1996	1997	1998	1999	2000	10 Year Δ
• Arts	556 (4%)	435 (3%)	423 (3%)	474 (3%)	565 (4%)	695 (4%)	800 (5%)	+44%
• Engineering	2,698 (19%)	2,606 (18%)	2,651 (18%)	2,869 (19%)	2,981 (19%)	3,136 (19%)	3,320 (20%)	+23%
• Humanities	1,017 (7%)	941 (6%)	899 (6%)	885 (6%)	822 (5%)	803 (5%)	748 (5%)	-26%
• Science/Math	3,450 (24%)	4,909 (33%)	4,900 (34%)	4,771 (32%)	4,863 (31%)	4,769 (30%)	4,444 (27%)	+29%
• Social Science	4,574 (32%)	3,998 (27%)	3,983 (27%)	4,265 (28%)	4,567 (29%)	5,067 (31%)	5,487 (33%)	+20%
• Undec./Special	2,097 (15%)	1,957 (13%)	1,767 (12%)	1,876 (12%)	2,039 (13%)	1,760 (11%)	1,697 (10%)	-19%
Total UG Enrollment	14,392	14,846	14,623	15,140	15,837	16,230	16,496	+15%

Science/Math and the Social Sciences continue to be the most popular undergraduate fields of study at UCSD.

Figure 5.

Undergraduate Enrollment by Major Field of Study Fall Quarter

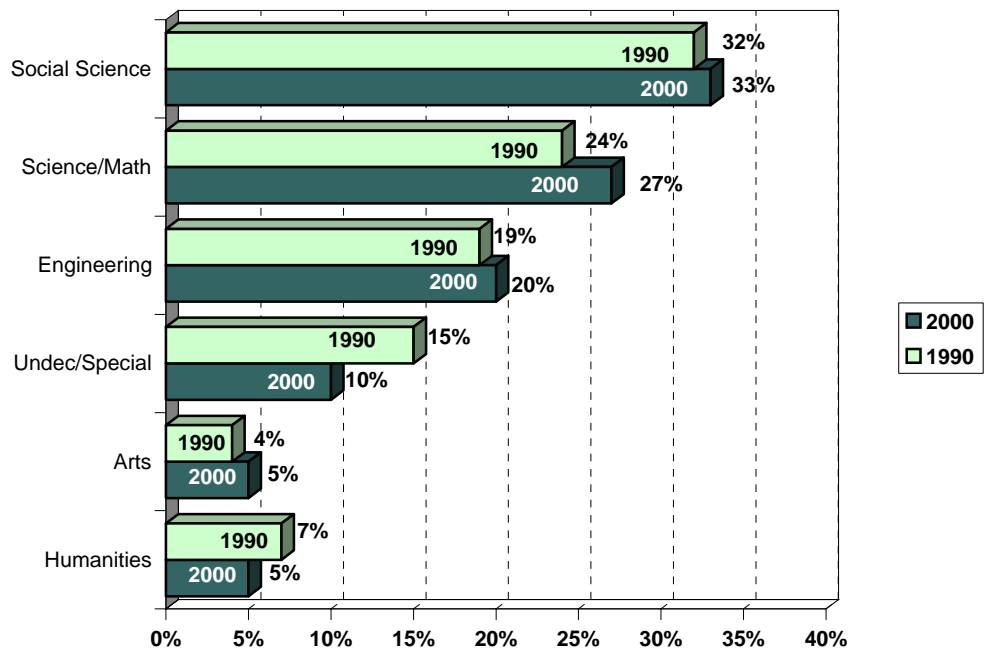


Table 6.

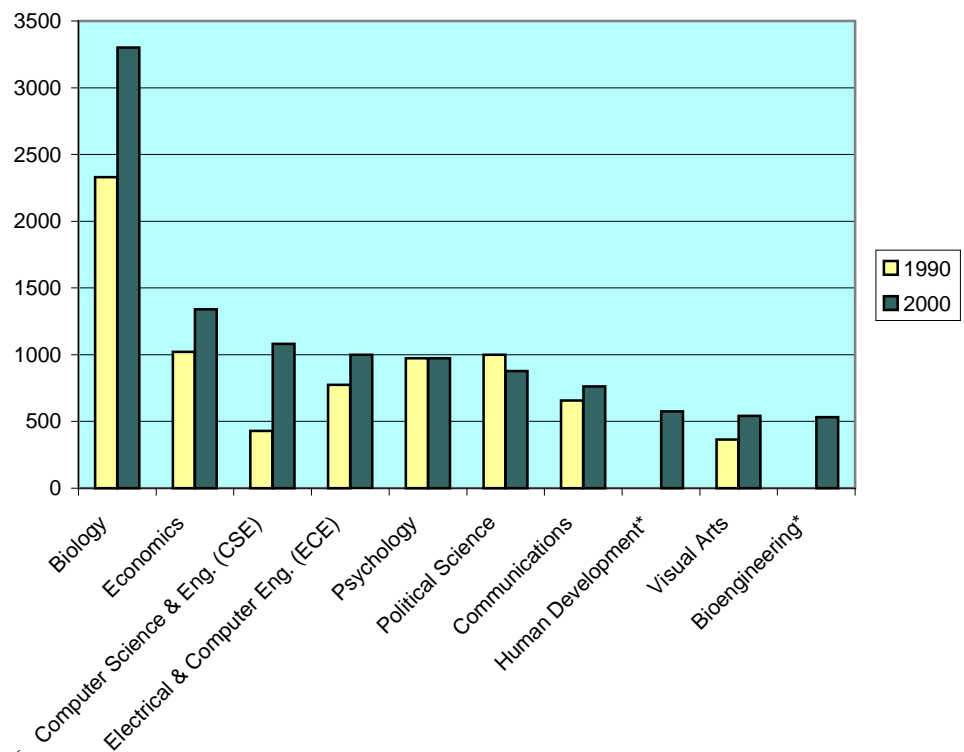
**Undergraduates by Major Department
Ten Most Populous Departments** Fall Quarter

1990			2000		
Major Department	n	%	Major Department	n	%
Biology	2,329	16.18%	Biology	3,302	20.02%
Applied Mechanics & Eng. (AMES)	1,495	10.39%	Economics	1,341	8.13%
Economics	1,021	7.09%	Computer Science & Eng. (CSE)	1,082	6.56%
Political Science	999	6.94%	Electrical & Computer Eng. (ECE)	1,000	6.06%
Psychology	974	6.77%	Psychology	974	5.90%
Electrical & Computer Eng. (ECE)	775	5.38%	Political Science	878	5.32%
Communications	656	4.56%	Communications	763	4.63%
Literature	607	4.22%	Human Development*	575	3.49%
Computer Science & Eng. (CSE)	428	2.97%	Visual Arts	542	3.29%
Mathematics	421	2.93%	Bioengineering*	531	3.22%
Other Departments	2,619	18.20%	Other Departments	3,813	23.11%
Undeclared Majors	2,068	14.37%	Undeclared Majors	1,695	10.28%
TOTAL	14,392	100.00%	TOTAL	16,496	100.00%

The Biology department has the largest number of enrolled undergraduates at UCSD; Economics currently has the second largest, followed closely by CSE, where enrollments have more than doubled since 1990.

Figure 6.

Ten Most Populous Departments Fall Quarter



* No equivalent department in 1990.
 Human Development established: Fall 1994
 Bioengineering established: Fall 1994

Table 7.

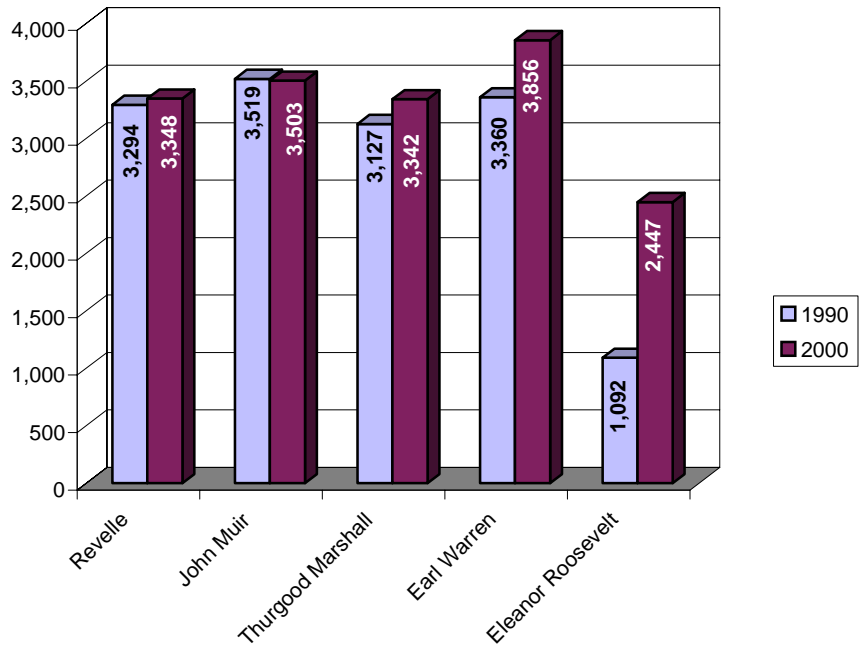
Undergraduates by College Fall Quarter

College	1990	1995	1996	1997	1998	1999	2000	10 Year Δ
• Revelle	3,294 (23%)	3,057 (21%)	3,031 (21%)	3,158 (21%)	3,309 (21%)	3,364 (21%)	3,348 (20%)	+2%
• John Muir	3,519 (24%)	3,447 (23%)	3,308 (23%)	3,339 (22%)	3,415 (22%)	3,440 (21%)	3,503 (21%)	-0%
• Thurgood Marshall	3,127 (22%)	3,004 (20%)	2,910 (20%)	3,113 (21%)	3,203 (20%)	3,326 (20%)	3,342 (20%)	+7%
• Earl Warren	3,360 (23%)	3,503 (24%)	3,536 (24%)	3,566 (24%)	3,768 (24%)	3,816 (24%)	3,856 (23%)	+15%
• Eleanor Roosevelt	1,092 (8%)	1,835 (12%)	1,838 (13%)	1,964 (13%)	2,142 (13%)	2,284 (14%)	2,447 (15%)	+124%
Total UG Enrollment	14,392	14,846	14,623	15,140	15,837	16,230	16,496	

Eleanor Roosevelt College has more than doubled in size since 1990. With more than 3,500 students, Earl Warren College is currently the largest of the five undergraduate colleges.

Figure 7.

Undergraduate Enrollments by College Fall Quarter





**Academic
Profile:
Undergraduates**

■ Academic Profile: Total Undergraduate Population

Reaching a new high in 2000, the mean grade point average (GPA) for all undergraduates at UCSD is 3.00 (B); 17% have a GPA of 3.5 or higher.

Table 8.

Academic Profile Summary Fall Quarter

Undergraduates	1990	1995	1996	1997	1998	1999	2000
• UCSD GPA	2.90	2.97	2.98	2.98	2.98	2.98	3.00
GPA \geq 3.5	12.1%	16.0%	15.9%	16.2%	16.4%	16.7%	17.0%
3.0 \leq GPA < 3.5	32.3%	33.4%	34.0%	34.6%	34.2%	34.0%	35.3%
2.5 \leq GPA < 3.0	34.3%	32.4%	33.0%	32.1%	31.8%	31.4%	31.2%
2.0 \leq GPA < 2.5	18.1%	15.1%	14.2%	14.5%	14.7%	14.9%	13.9%
GPA < 2.0	3.2%	3.1%	2.9%	2.6%	2.9%	3.0%	2.6%

Figure 8.

Proportion of Student Body within GPA Ranges Fall Quarter

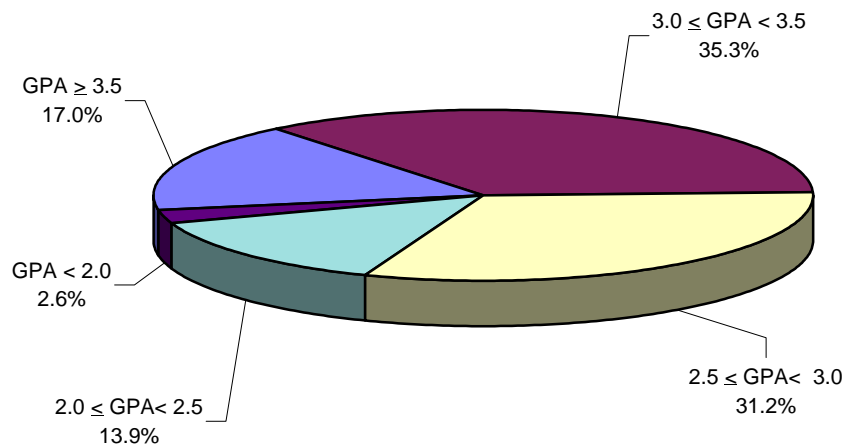


Table 9.

Academic Profile by Class Level Fall Quarter

Undergraduates	1990	1995	1996	1997	1998	1999	2000
• Freshman (N = 3,366)							
Freshman GPA	2.68	2.67	2.77	2.71	2.66	2.64	2.68
GPA \geq 3.5	8.8%	9.8%	15.2%	15.0%	11.1%	8.6%	11.0%
3.0 \leq GPA < 3.5	22.2%	19.9%	23.3%	19.5%	16.7%	18.0%	23.7%
2.5 \leq GPA < 3.0	30.7%	31.9%	28.5%	26.3%	30.7%	32.3%	28.2%
2.0 \leq GPA < 2.5	27.5%	26.2%	21.7%	26.8%	28.9%	28.8%	23.1%
GPA < 2.0	10.8%	12.2%	11.4%	12.4%	12.5%	12.4%	14.0%
• Sophomore (N = 3,191)							
Sophomore GPA	2.90	2.96	2.94	2.96	2.95	2.98	2.99
GPA \geq 3.5	12.4%	15.0%	13.1%	14.6%	14.7%	17.0%	16.7%
3.0 \leq GPA < 3.5	30.3%	33.0%	33.5%	34.1%	33.1%	32.9%	34.6%
2.5 \leq GPA < 3.0	35.4%	33.7%	34.7%	33.5%	33.7%	32.2%	32.3%
2.0 \leq GPA < 2.5	18.9%	15.7%	15.8%	15.4%	15.3%	14.9%	14.2%
GPA < 2.0	3.1%	2.5%	2.8%	2.4%	3.2%	3.1%	2.3%
• Junior (N = 4,640)							
Junior GPA	2.92	2.98	2.98	2.99	3.01	2.99	3.00
GPA \geq 3.5	11.7%	16.8%	15.4%	16.0%	17.2%	16.3%	16.9%
3.0 \leq GPA < 3.5	34.6%	33.9%	35.0%	35.0%	35.7%	35.9%	36.1%
2.5 \leq GPA < 3.0	33.9%	32.1%	33.1%	32.5%	30.9%	31.6%	31.6%
2.0 \leq GPA < 2.5	16.9%	13.7%	13.2%	13.7%	13.5%	13.3%	12.8%
GPA < 2.0	2.9%	3.5%	3.2%	2.7%	2.8%	2.9%	2.7%
• Senior (N = 5,299)							
Senior GPA	2.95	3.00	3.02	3.02	3.02	3.01	3.03
GPA \geq 3.5	13.1%	16.9%	17.8%	17.2%	17.4%	17.8%	17.9%
3.0 \leq GPA < 3.5	34.3%	35.2%	35.0%	36.3%	35.9%	35.2%	36.1%
2.5 \leq GPA < 3.0	34.6%	32.0%	32.4%	31.8%	31.5%	30.7%	30.7%
2.0 \leq GPA < 2.5	16.3%	14.1%	12.9%	13.1%	13.4%	14.4%	13.7%
GPA < 2.0	1.7%	1.8%	1.8%	1.6%	1.8%	1.9%	1.7%
Undergraduate GPA	2.90	2.97	2.98	2.98	2.98	2.98	3.00

There is a positive relationship between student level and grade point average; as students advance in standing the grade point average generally increases.

Table 10.

Academic Profile by Major Field of Study Fall Quarter

Undergraduates	1990	1995	1996	1997	1998	1999	2000
• Arts (N = 800)							
Arts GPA	3.03	3.09	3.11	3.05	3.08	3.06	3.10
GPA \geq 3.5	17.4%	22.3%	17.9%	16.4%	18.7%	18.5%	18.7%
3.0 \leq GPA < 3.5	42.7%	38.3%	47.0%	45.1%	43.2%	39.8%	45.3%
2.5 \leq GPA < 3.0	28.5%	27.1%	25.9%	24.9%	26.3%	29.8%	25.8%
2.0 \leq GPA < 2.5	10.4%	10.7%	8.1%	12.0%	10.5%	9.8%	8.7%
GPA < 2.0	1.1%	1.6%	1.2%	1.6%	1.4%	2.1%	1.6%
• Engineering (N = 3,320)							
Engineering GPA	2.88	2.97	2.97	3.00	2.97	2.97	2.95
GPA \geq 3.5	14.1%	16.5%	16.9%	17.7%	15.7%	16.1%	15.6%
3.0 \leq GPA < 3.5	31.6%	32.0%	30.5%	33.2%	32.5%	31.8%	31.4%
2.5 \leq GPA < 3.0	36.3%	34.5%	34.1%	33.0%	34.3%	34.4%	34.6%
2.0 \leq GPA < 2.5	14.8%	14.6%	15.6%	13.7%	14.8%	15.1%	15.7%
GPA < 2.0	3.2%	2.4%	2.8%	2.4%	2.7%	2.5%	2.8%
• Humanities (N = 748)							
Humanities GPA	3.02	2.97	3.10	3.10	3.14	3.10	3.09
GPA \geq 3.5	13.6%	18.1%	22.2%	20.9%	25.0%	23.7%	22.1%
3.0 \leq GPA < 3.5	39.7%	41.8%	40.9%	42.0%	40.3%	37.8%	38.0%
2.5 \leq GPA < 3.0	30.3%	27.2%	25.9%	24.6%	22.7%	25.1%	28.7%
2.0 \leq GPA < 2.5	13.6%	10.7%	9.7%	11.1%	10.2%	10.8%	8.8%
GPA < 2.0	2.8%	2.2%	1.3%	1.4%	1.8%	2.6%	2.5%
• Science/Math (N = 4,444)							
Science/Math GPA	2.81	2.96	2.97	2.99	2.98	2.98	2.99
GPA \geq 3.5	12.4%	17.2%	16.4%	17.1%	18.5%	18.5%	18.8%
3.0 \leq GPA < 3.5	28.4%	30.9%	32.7%	32.5%	31.0%	30.8%	31.6%
2.5 \leq GPA < 3.0	34.2%	32.4%	33.3%	32.9%	32.3%	32.0%	31.6%
2.0 \leq GPA < 2.5	21.4%	16.0%	14.6%	15.0%	15.3%	15.6%	15.2%
GPA < 2.0	3.6%	3.5%	3.1%	2.5%	2.9%	3.1%	2.8%
• Social Science (N = 5,487)							
Social Science GPA	2.85	2.95	2.97	2.95	2.97	2.97	3.01
GPA \geq 3.5	10.0%	13.5%	14.0%	12.8%	13.4%	14.3%	15.5%
3.0 \leq GPA < 3.5	31.9%	35.5%	35.2%	36.4%	36.9%	37.4%	38.5%
2.5 \leq GPA < 3.0	35.2%	33.0%	33.5%	33.1%	31.8%	30.4%	30.6%
2.0 \leq GPA < 2.5	19.9%	15.0%	14.3%	14.8%	14.9%	14.9%	13.2%
GPA < 2.0	3.0%	3.1%	3.0%	2.9%	3.0%	2.9%	2.2%
Undergraduate GPA	2.85	2.97	2.98	2.98	2.98	2.98	3.00

Grade point averages vary by major field of study with the highest GPAs generally associated with Arts and Humanities majors.



**New
Students**

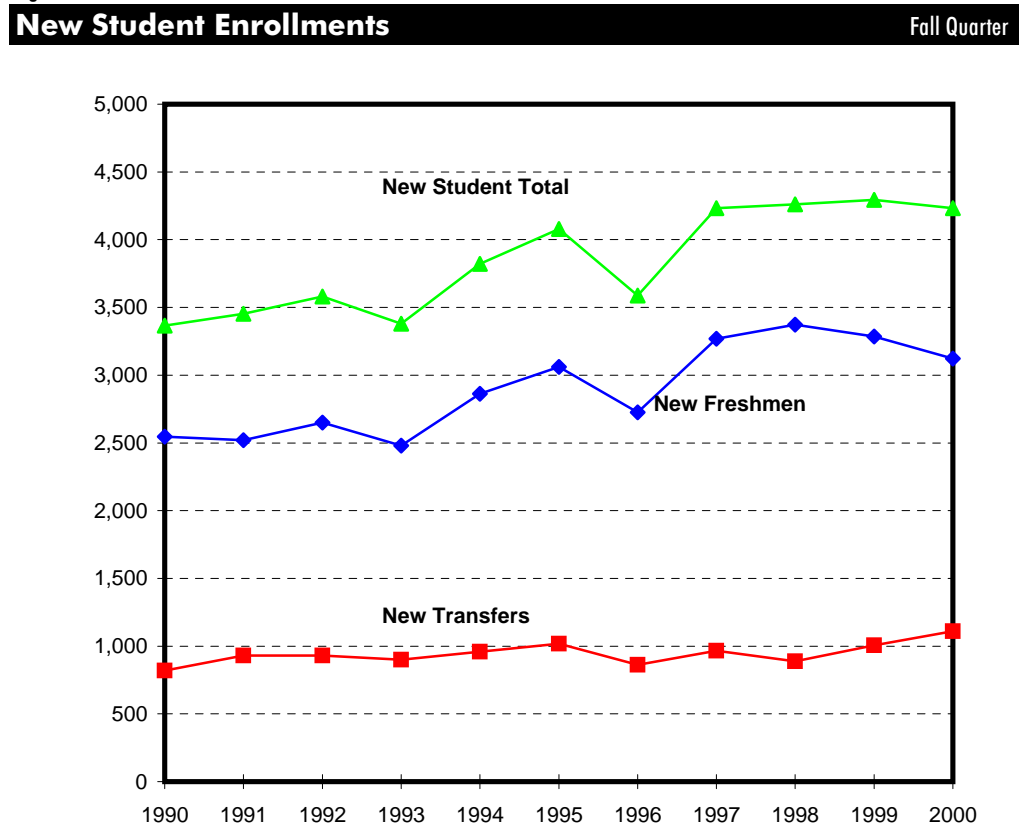
■ New Students: The Past Decade

New student enrollments have grown from 3,366 in 1990 to 4,233 in 2000, an overall increase of 26%. Of the new student total, nearly three-quarters are first-time freshmen.

Table 11.

New Student Enrollments								Fall Quarter
New Students	1990	1995	1996	1997	1998	1999	2000	10 Year Δ
• First-Time Freshmen	2,547 (76%)	3,062 (75%)	2,725 (76%)	3,268 (77%)	3,373 (79%)	3,286 (77%)	3,122 (74%)	+23%
• New Transfers	819 (24%)	1,018 (25%)	863 (24%)	965 (23%)	888 (21%)	1,007 (23%)	1,111 (26%)	+36%
New Student Total	3,366	4,080	3,588	4,233	4,261	4,293	4,233	+26%

Figure 9.





**First-Time
Freshmen**

■ First-Time Freshmen

Record numbers of high school students sought admission to UCSD in 2000. Of the more than 35 thousand high school students who applied for admission, 38% were selected for admission. With a total enrollment figure of 3,122, the freshman class of 2000 was smaller than the freshman class of 1999.

Table 12.

Applicants, Admits & Registered Fall Quarter

First-Time Freshmen	1990	1995	1996	1997	1998	1999	2000	10 Year Δ
• Applicants	18,893	21,579	23,685	25,102	28,091	32,547	35,691	+ 89%
• Admits	10,031	12,553	11,909	13,303	13,586	13,251	13,718	+ 37%
Admit/App. Rate	53%	58%	50%	53%	48%	41%	38%	
• Registered	2,547	3,062	2,725	3,268	3,373	3,286	3,122	+ 23%
Reg./Admit Rate	25%	24%	23%	25%	25%	25%	23%	

Figure 10.

Applicants, Admits & Registered Fall Quarter

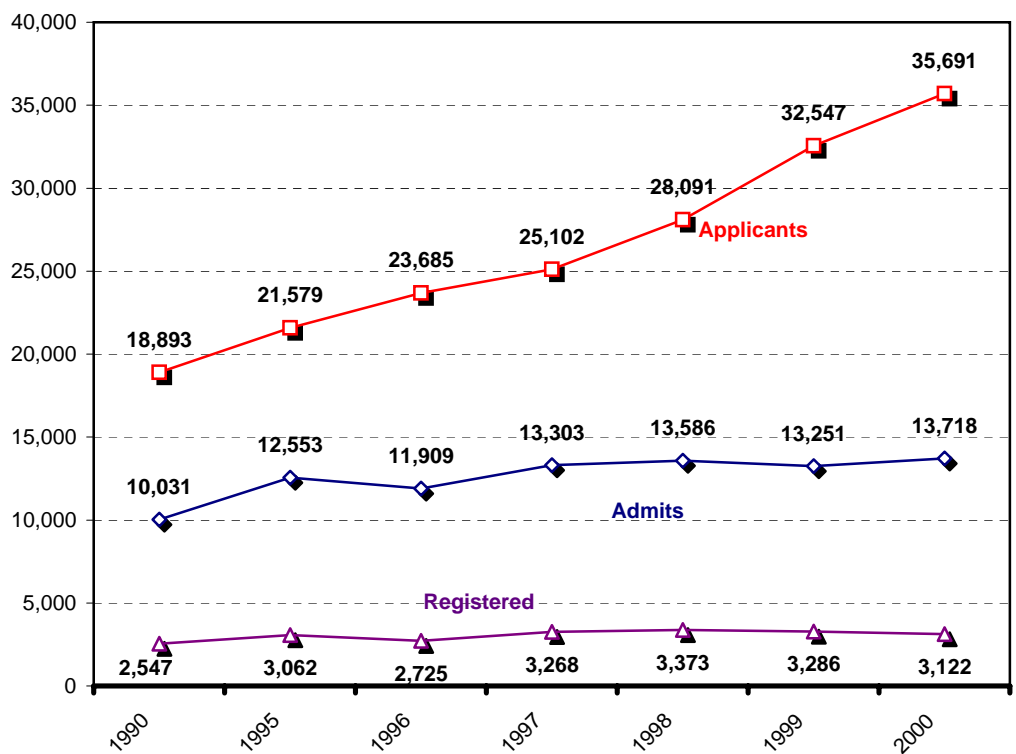


Table 13.

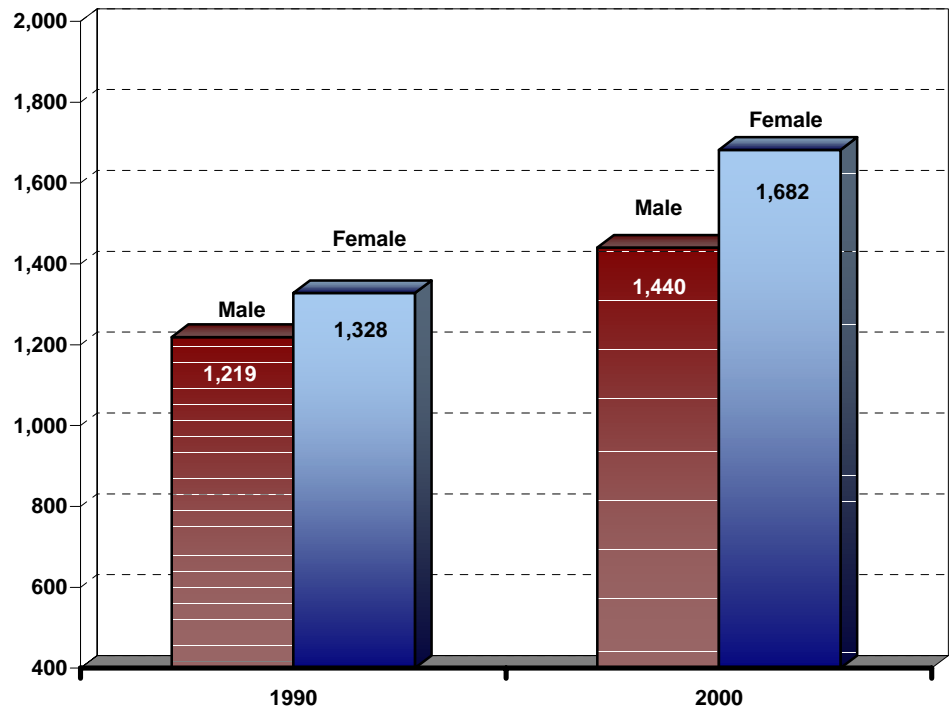
First-Time Freshmen by Gender Fall Quarter

Gender	1990	1995	1996	1997	1998	1999	2000	10 Year Δ
• Male	1,219 (48%)	1,451 (47%)	1,224 (45%)	1,491 (46%)	1,496 (44%)	1,493 (45%)	1,440 (46%)	+18%
• Female	1,328 (52%)	1,611 (53%)	1,501 (55%)	1,777 (54%)	1,877 (56%)	1,793 (55%)	1,682 (54%)	+27%
Total	2,547	3,062	2,725	3,268	3,373	3,286	3,122	+23%

Females were in the clear majority among high school graduates beginning their undergraduate studies at UCSD in the fall of 2000.

Figure 11.

First-Time Freshmen by Gender Fall Quarter



Since 1990, enrollment declines have occurred among African American, Native American and Caucasian students; enrollment increases have occurred among Mexican American, Asian, Filipino, Latino and "other" student groups.

Table 14.

First-Time Freshmen by Ethnicity Fall Quarter

Ethnicity	1990	1995	1996	1997	1998	1999	2000	10 Year Δ
• African-American	85 (3%)	42 (1%)	61 (2%)	64 (2%)	52 (2%)	33 (1%)	28 (1%)	-67%
• Mexican-American	241 (9%)	217 (7%)	234 (9%)	272 (8%)	202 (6%)	227 (7%)	243 (8%)	+1%
• Native-American	24 (1%)	23 (1%)	29 (1%)	25 (1%)	19 (1%)	12 (0%)	13 (0%)	-46%
• Asian	461 (18%)	967 (32%)	774 (28%)	959 (29%)	963 (29%)	1,101 (34%)	986 (32%)	+114%
• Caucasian	1,349 (53%)	1,296 (42%)	1,116 (41%)	1,372 (42%)	1,253 (37%)	1,328 (40%)	1,210 (39%)	-10%
• Filipino	107 (4%)	145 (5%)	161 (6%)	165 (5%)	181 (5%)	140 (4%)	161 (5%)	+50%
• Latino	47 (2%)	60 (2%)	42 (2%)	60 (2%)	74 (2%)	60 (2%)	67 (2%)	+43%
• Other/Missing	233 (9%)	312 (10%)	308 (11%)	351 (11%)	629 (19%)	385 (12%)	414 (13%)	+78%
Total	2,547	3,062	2,725	3,268	3,373	3,286	3,122	+23%

Figure 12.

First-Time Freshmen by Ethnicity Fall Quarter

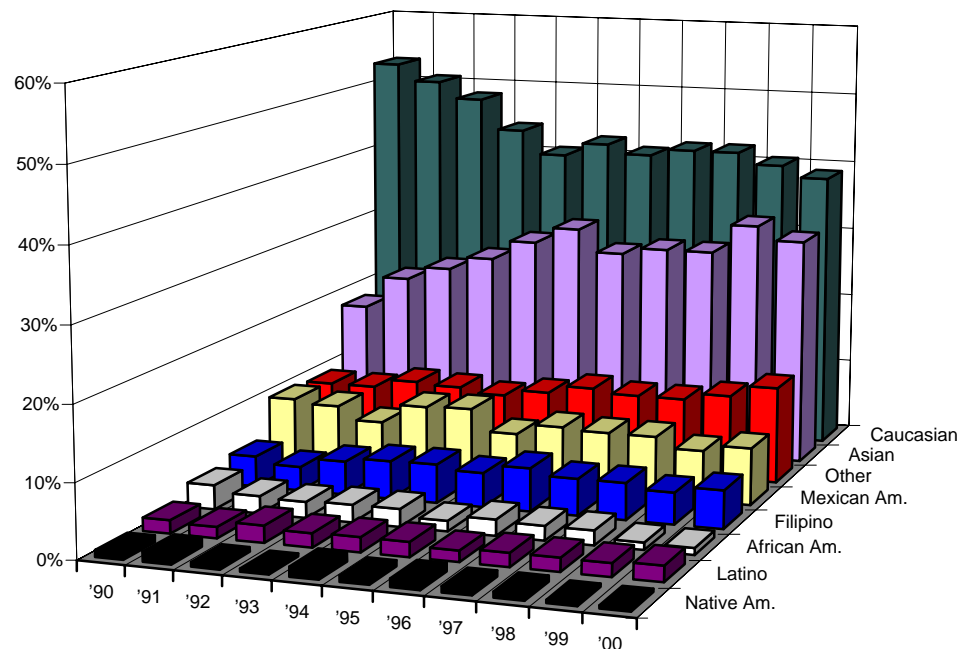


Table 15.

First-Time Freshmen by Major Field of Study								Fall Quarter
Major Field of Study	1990	1995	1996	1997	1998	1999	2000	10 Year Δ
• Arts	53 (2%)	38 (1%)	44 (2%)	62 (2%)	85 (3%)	65 (2%)	86 (3%)	+62%
• Engineering	566 (22%)	601 (20%)	598 (22%)	636 (19%)	595 (18%)	660 (20%)	713 (23%)	+26%
• Humanities	113 (4%)	95 (3%)	84 (3%)	98 (3%)	100 (3%)	90 (3%)	76 (2%)	-33%
• Science/Math	605 (24%)	905 (30%)	733 (27%)	781 (24%)	861 (26%)	840 (26%)	752 (24%)	+24%
• Social Science	474 (19%)	452 (15%)	408 (15%)	506 (15%)	640 (19%)	630 (19%)	564 (18%)	+19%
• Undeclared/Missing/ Special	736 (29%)	971 (32%)	858 (31%)	1,185 (36%)	1,092 (32%)	1,001 (30%)	931 (30%)	+26%
Total	2,547	3,062	2,725	3,268	3,373	3,286	3,122	

For first-time freshmen, the most popular field of study in 2000 was Science/Math followed closely by Engineering. Nearly, thirty percent of all new freshmen were undeclared at the time of admission.

Figure 13.

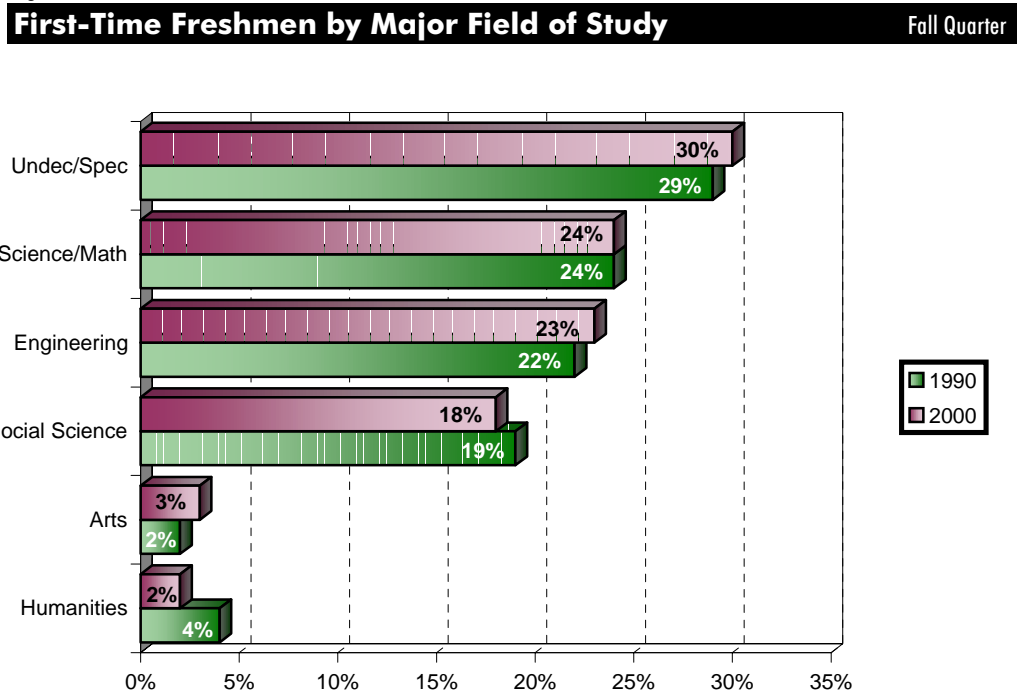


Table 16.

**First-Time Freshmen
by Major Department at Time of Admission** Fall Quarter

1990			2000		
Major Department	n	%	Major Department	n	%
Biology	419	16.45%	Biology	510	16.34%
Applied Mechanics & Eng. (AMES)	366	14.37%	Electrical & Computer Eng. (ECE)	216	6.92%
Psychology	134	5.26%	Computer Science & Eng. (CSE)	190	6.09%
Electrical & Computer Eng. (ECE)	116	4.55%	Bioengineering	141	4.52%
Political Science	112	4.40%	Psychology	132	4.23%
Economics	97	3.81%	Political Science	130	4.16%
Computer Science & Eng. (CSE)	84	3.30%	Applied Mechanics & Eng. (AMES)	127	4.07%
Communications	76	2.98%	Economics	111	3.56%
Literature	74	2.91%	Chemistry & Biochemistry	91	2.91%
Physics	69	2.71%	Communications	90	2.88%
Chemistry	63	2.47%	Mathematics	87	2.79%
Mathematics	52	2.04%	Physics	61	1.95%
Visual Arts	31	1.22%	Visual Arts	57	1.83%
History	28	1.10%	Structural Engineering	38	1.22%
Sociology	18	0.71%	Literature	34	1.09%
Anthropology	13	0.51%	History	33	1.06%
Theatre	13	0.51%	Human Development	28	0.90%
Philosophy	10	0.39%	Sociology	21	0.67%
Music	9	0.35%	Anthropology	16	0.51%
Urban Studies & Planning	7	0.27%	Music	16	0.51%
Subtotal	1,791	70.32%	Subtotal	2,129	68.19%
Other Majors	20	0.79%	Other Majors	62	1.99%
Undeclared Majors	736	28.90%	Undeclared Majors	931	29.82%
TOTAL	2,547	100.00%	TOTAL	3,122	100.00%

As in 1990, Biology was the most popular declared major among new freshmen in 2000; approximately one sixth of all new freshmen report majoring in Biology.

Table 17.

First-Time Freshmen by College							Fall Quarter	
College	1990	1995	1996	1997	1998	1999	2000	10 Year Δ
• Revelle	598 (23%)	756 (25%)	601 (22%)	771 (24%)	703 (21%)	795 (24%)	717 (23%)	+20%
• John Muir	546 (21%)	614 (20%)	570 (21%)	703 (22%)	734 (22%)	657 (20%)	586 (19%)	+7%
• Thurgood Marshall	551 (22%)	653 (21%)	569 (21%)	696 (21%)	627 (19%)	684 (21%)	598 (19%)	+9%
• Earl Warren	519 (20%)	578 (19%)	524 (19%)	560 (17%)	699 (21%)	570 (17%)	652 (21%)	+26%
• Eleanor Roosevelt	333 (13%)	461 (15%)	461 (17%)	538 (16%)	610 (18%)	580 (18%)	569 (18%)	+71%
Total	2,547	3,062	2,725	3,268	3,373	3,286	3,122	+23%

Of the five undergraduate colleges at UCSD, only Earl Warren experienced an enrollment increase between 1999 and 2000.

Table 18.

First-Time Freshmen by Home Location							Fall Quarter	
Home Location	1990	1995	1996	1997	1998	1999	2000	10 Year Δ
• San Diego	599 (24%)	671 (22%)	697 (26%)	758 (23%)	802 (24%)	594 (18%)	538 (17%)	-10%
• Los Angeles	1,080 (42%)	1,399 (46%)	1,136 (42%)	1,295 (40%)	1,315 (39%)	1,398 (42%)	1,416 (45%)	+31%
• San Francisco	426 (17%)	553 (18%)	480 (18%)	620 (19%)	625 (19%)	650 (20%)	587 (19%)	+38%
• Other CA	239 (9%)	314 (10%)	328 (12%)	459 (14%)	464 (14%)	492 (15%)	445 (14%)	+86%
• Out-of-State	171 (7%)	94 (3%)	63 (2%)	108 (3%)	148 (4%)	125 (4%)	97 (3%)	-43%
• Foreign	32 (1%)	31 (1%)	21 (1%)	28 (1%)	19 (1%)	27 (1%)	39 (1%)	+22%
Total	2,547	3,062	2,725	3,268	3,373	3,286	3,122	+23%


Table 19.

Major* Feeder High Schools for First-time Freshmen Fall Quarter

High School	City	Number from H.S Registered at UCSD in Fall, 2000	Percent of UCSD's Total 2000 Freshman Enrollment	Average H.S. GPA of Registered Freshmen	Average SAT I of Registered Freshmen
Diamond Bar High School	Diamond Bar	38	1.22%	3.93	1267
Arcadia High School	Arcadia	31	0.99%	3.94	1291
Samuel F B Morse High	San Diego	26	0.83%	4.10	1152
Mission San Jose High	Fremont	25	0.80%	3.91	1378
University High School	Irvine	24	0.77%	3.78	1336
Mark Keppel High School	Alhambra	23	0.74%	3.70	1260
Rancho Bernardo High School	San Diego	22	0.70%	4.01	1282
Lynbrook High School	San Jose	21	0.67%	3.91	1329
Palos Verdes Penn. High School	Rolling Hills	21	0.67%	3.74	1334
Sunny Hills High School	Fullerton	21	0.67%	3.83	1354
Cerritos High School	Cerritos	19	0.61%	3.84	1308
San Marino High School	San Marino	19	0.61%	3.89	1352
University City High School	San Diego	19	0.61%	4.07	1292
Esperanza High School	Anaheim	18	0.58%	4.04	1245
Lowell High School	San Francisco	18	0.58%	3.67	1333
Southwest High School	San Diego	18	0.58%	3.99	1075
Torrey Pines High School	San Diego	18	0.58%	3.95	1283
Monte Vista High School	Danville	17	0.54%	4.03	1268
Acalanes High School	Lafayette	16	0.51%	3.79	1286
Agoura High School	Agoura Hills	16	0.51%	3.82	1337
La Canada High School	La Canada	16	0.51%	3.87	1359
Leland High School	San Jose	16	0.51%	4.04	1327
Temple City High School	Temple City	16	0.51%	3.93	1291
Beverly Hills High School	Beverly Hills	15	0.48%	3.82	1307
Granite Hills High School	El Cajon	15	0.48%	3.96	1215
La Jolla High School	La Jolla	15	0.48%	3.90	1298
Mira Mesa High School	San Diego	15	0.48%	4.17	1291
Santa Monica High School	Santa Monica	15	0.48%	3.97	1281
James Monroe High School	Sepulveda	14	0.45%	4.07	1125
Los Altos High School	Los Altos	14	0.45%	3.89	1311
Monta Vista High School	Cupertino	14	0.45%	3.92	1358
Monte Vista High School	Spring Valley	14	0.45%	4.38	1390
Mount Carmel High School	San Diego	14	0.45%	4.05	1251
Newbury Park High School	Newbury Park	14	0.45%	4.17	1268
San Gabriel High School	San Gabriel	14	0.45%	3.76	1234
Scripps Ranch High School	San Diego	14	0.45%	4.05	1196
Subtotal (Number of High Schools = 36)		665	21.30%	3.94	1285
Other High Schools (Number of High Schools = 768)		2,457	78.70%	4.00	1252
Total (Number of High Schools = 804)		3,122	100.00%	3.99	1259

* Fourteen or more students

In 2000, Diamond Bar High School and Arcadia High School, both in the Los Angeles area, top the list of major feeder schools.



**High School
Grades and
SAT Scores**

Academic Preparation: A Decade of Change

The 2000 freshman cohort was the most academically prepared group of students in UCSD's recorded history with a mean high school grade point average of 3.99 and an average SAT composite score of 1259.

Table 20.

Freshman Cohort by HS GPA and SAT Score Averages Fall Quarter

First-Time Freshmen	1990	1995	1996	1997	1998	1999	2000
• HS GPA*	3.79	3.86	3.90	3.90	3.89	3.98	3.99
• SAT I (Verbal & Math)	1085	1136	1225	1233	1241	1256	1259

* GPAs may exceed 4.0 with credit given for honors courses.

Table 21.

Freshman Cohort by Academic Indicator Ranges Fall Quarter

High School GPA Range	Percentage in Range		SAT I Composite Score Range	Percentage in Range	
	1990	2000		1990	2000
• 4.0 - High	33%	54%	• 1500 - 1600	<1%	3%
• 3.90 - 3.99	10%	12%	• 1300 - 1499	13%	39%
• 3.60 - 3.89	33%	28%	• 1200 - 1299	24%	30%
• 3.30 - 3.59	16%	6%	• 1000 - 1199	44%	25%
• Low - 3.29	8%	<1%	• Low - 999	18%	4%
Total	100%	100%	Total	100%	100%

Number of Honors Courses: 10th & 11th Grade	Percentage in Range		Number of College Preparatory (A-F) Courses	Percentage in Range	
	1990	2000		1990	2000
• More than 8	11%	15%	• More than 50	8%	13%
• 7 - 8	14%	22%	• 46 - 50	17%	25%
• 5 - 6	20%	28%	• 41 - 45	34%	36%
• 1 - 4	45%	32%	• 36 - 40	35%	23%
• 0	10%	4%	• 30 - 35	6%	3%
Total	100%	100%	Total	100%	100%

Figure 14.

Academic Preparation: 1990-2000 Comparison Fall Quarter

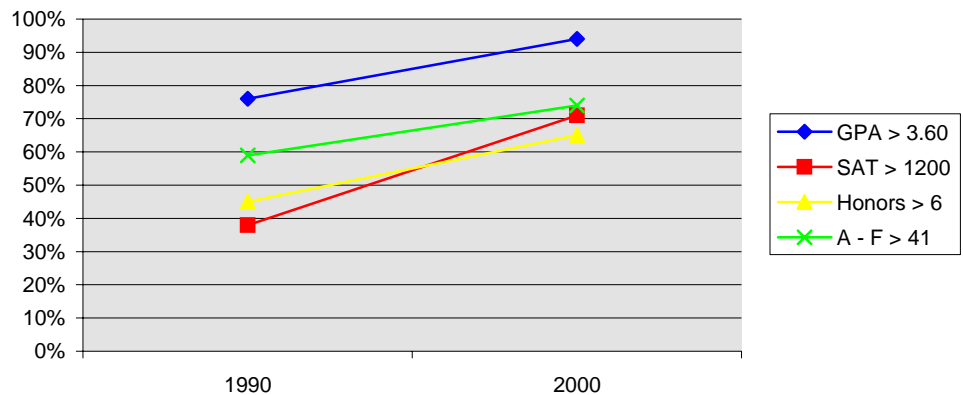


Table 22.

High School GPA* by Gender, Ethnicity, Major Field of Study and Home Location Fall Quarter

First-Time Freshmen	1990	1995	1996	1997	1998	1999	2000
• Gender							
Male	3.77	3.84	3.88	3.87	3.86	3.94	3.97
Female	3.82	3.89	3.92	3.92	3.90	4.00	4.00
• Ethnicity							
African-American	3.30	3.80	3.60	3.68	3.81	3.93	4.01
Mexican-American	3.49	3.71	3.72	3.73	3.89	3.96	3.98
Native-American	3.47	3.72	3.80	3.63	3.92	3.95	3.96
Asian	3.85	3.84	3.89	3.88	3.84	3.94	3.92
Caucasian	3.85	3.90	3.94	3.95	3.91	4.01	4.03
Filipino	3.93	3.94	4.00	4.02	3.93	4.07	4.08
Latino	3.80	3.87	4.05	3.90	3.94	3.94	4.04
• Major Field of Study							
Arts	3.68	3.84	3.78	3.78	3.78	3.96	3.94
Engineering	3.85	3.89	3.94	3.89	3.93	4.00	4.03
Humanities	3.74	3.78	3.78	3.84	3.78	3.91	3.96
Science/Math	3.84	3.91	3.95	3.96	3.94	4.03	4.02
Social Science	3.70	3.81	3.80	3.83	3.82	3.92	3.93
Undec./Special	3.78	3.84	3.90	3.90	3.88	3.96	3.97
• Home Location							
San Diego	3.83	3.92	3.96	3.98	3.95	4.05	4.04
Los Angeles	3.78	3.84	3.87	3.86	3.84	3.93	3.95
San Francisco	3.75	3.83	3.85	3.84	3.83	3.94	3.95
Other CA	3.83	3.93	3.95	3.97	3.96	4.01	4.06
Out of State	3.84	3.94	3.96	3.90	3.97	4.11	4.10
Total	3.79	3.86	3.90	3.90	3.89	3.98	3.99

* GPAs may exceed 4.0 with credit given for honors courses.

High school grades vary based on characteristics such as gender, ethnicity and major field of study; the mean high school grade point average of females, for example, is typically higher than that of males.

Table 23.

**SAT I Scores by Gender, Ethnicity,
Major Field of Study and Home Location** Fall Quarter

First-Time Freshmen SAT I	1990 Average	1995 Average	1996* Average	1997 Average	1998 Average	1999 Average	2000 Average
• Gender							
Male	1114	1171	1253	1263	1272	1290	1289
Female	1059	1105	1201	1209	1218	1228	1233
• Ethnicity							
African-American	913	1026	1106	1105	1162	1207	1165
Mexican-American	954	992	1088	1097	1149	1140	1129
Native-American	927	1068	1176	1141	1277	1260	1240
Asian	1114	1116	1214	1237	1239	1252	1267
Caucasian	1103	1179	1263	1262	1263	1282	1284
Filipino	1074	1072	1178	1188	1178	1193	1192
Latino	1096	1092	1204	1198	1189	1162	1204
• Major Field of Study							
Arts	1083	1168	1201	1223	1232	1273	1245
Engineering	1098	1156	1243	1247	1282	1290	1290
Humanities	1080	1148	1247	1231	1261	1268	1257
Science/Math	1111	1133	1217	1225	1231	1245	1247
Social Science	1051	1106	1199	1209	1217	1231	1235
Undec./Special	1077	1138	1225	1239	1241	1257	1260
• Home Location							
San Diego	1062	1078	1185	1186	1190	1195	1202
Los Angeles	1080	1132	1222	1237	1249	1257	1259
San Francisco	1102	1196	1273	1272	1281	1296	1296
Other CA	1110	1146	1226	1233	1233	1250	1262
Out of State	1130	1219	1300	1288	1297	1330	1318
Total	1085	1136	1225	1233	1241	1256	1259

* SAT scores were 'recentered' starting with the 1996 freshman cohort.

The mean SAT composite score of males is typically higher than that of females; SAT scores, in general, were higher in 2000 than in previous years.

When compared on the basis of SAT scores, UCSD ranks among the top three in the UC system.

Table 24.

Intercampus Comparison¹ of Average SAT I Composite Scores Fall Quarter

UC Campus	1990	1991	1992	1993	1994	1995	1996 ²	1997	1998	1999	2000 ³
• Berkeley	1197	1202	1221	1219	1226	1218	1296	1311	1330	1305	NA
• Davis	1071	1060	1079	1070	1060	1070	1162	1162	1149	1165	1172
• Irvine	1036	1030	1016	1028	1011	1015	1121	1117	1126	1155	1174
• Los Angeles	1125	1151	1147	1136	1122	1136	1228	1239	1263	1262	1277
• Riverside	980	988	984	956	948	975	1046	1062	1061	1057	1060
• San Diego	1149	1141	1140	1130	1104	1136	1221	1233	1240	1250	1259
• Santa Barbara	1075	1061	1044	1005	997	1020	1116	1143	1158	1176	1189
• Santa Cruz	1069	1069	1055	1057	1034	1036	1134	1137	1135	1150	1145
Systemwide	1096	1102	1099	1086	1079	1088	1180	1188	1196	1198	NA

¹ Source: University of California, Frequency Distribution of College Entrance Examination Board (CEEB) Test Scores For Entering Freshmen CSS 050B.

² From 1996, recentered SAT scores are reported.

³ 2000 data based on personal contact with representatives for each UC Campus and are subject to change.

Table 25.

UCSD's Position Relative to Other UC Campuses on SAT I Scores Fall Quarter

Rank	1990	1991	1992	1993	1994	1995	1996	1997	1998	1999	2000
• 1	UCB	UCB	UCB	UCB	UCB	UCB	UCB	UCB	UCB	UCB	NA
• 2	UCSD	UCLA	UCLA	UCLA	UCLA	UCSD	UCLA	UCLA	UCLA	UCLA	UCLA
• 3	UCLA	UCSD	UCSD	UCSD	UCSD	UCLA	UCSD	UCSD	UCSD	UCSD	UCSD
• 4	UCSB	UCSC	UCD	UCD	UCD	UCD	UCD	UCD	UCSB	UCSB	UCSB
• 5	UCD	UCSB	UCSB	UCI	UCSC	UCSC	UCSC	UCSB	UCD	UCD	UCI
• 6	UCSC	UCD	UCSC	UCSC	UCI	UCI	UCI	UCSC	UCSC	UCI	UCD
• 7	UCI	UCI	UCI	UCSB	UCSB	UCSB	UCSB	UCI	UCI	UCSC	UCSC
• 8	UCR	UCR	UCR	UCR	UCR	UCR	UCR	UCR	UCR	UCR	UCR



**New
Transfer
Students**

■ New Transfer Students

A record number of applications for admissions was received from transfer students in 2000, over one thousand more than in 1999. This year also marks the largest entering cohort to date with over eleven hundred new registrants.

Table 26.

New Transfers: Applicants, Admits & Registered Fall Quarter

New Transfers	1990	1995	1996	1997	1998	1999	2000	10 Year Δ
• Applicants	3,542	4,176	4,351	4,419	4,654	5,351	6,375	+80%
• Admits	1,971	2,783	2,407	2,525	2,503	2,845	3,613	+83%
Admit/Applicant Rate	(56%)	(67%)	(55%)	(57%)	(54%)	(53%)	(57%)	
• Registered	752	1,018	863	965	888	1,007	1,111	+48%
Registered/Admit Rate	(38%)	(37%)	(36%)	(38%)	(35%)	(35%)	(31%)	

Figure 15.

New Transfers: Applicants, Admits & Registered Fall Quarter

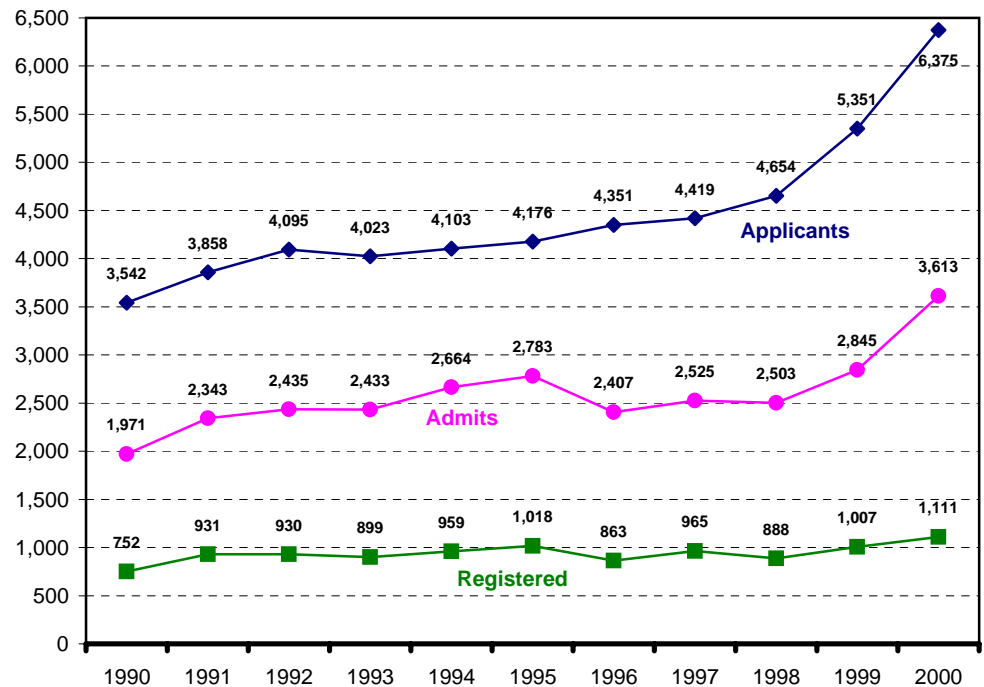


Table 27.

New Transfers by Gender Fall Quarter

Gender	1990	1995	1996	1997	1998	1999	2000	10 Year Δ
• Male	403 (54%)	528 (52%)	491 (57%)	489 (51%)	467 (53%)	491 (49%)	556 (50%)	+38%
• Female	349 (46%)	490 (48%)	372 (43%)	476 (49%)	421 (47%)	516 (51%)	555 (50%)	+59%
Total	752	1,018	863	965	888	1,007	1,111	+48%

Men and women were equally represented in the 2000 new transfer cohort.

Figure 16.

New Transfers by Gender Fall Quarter

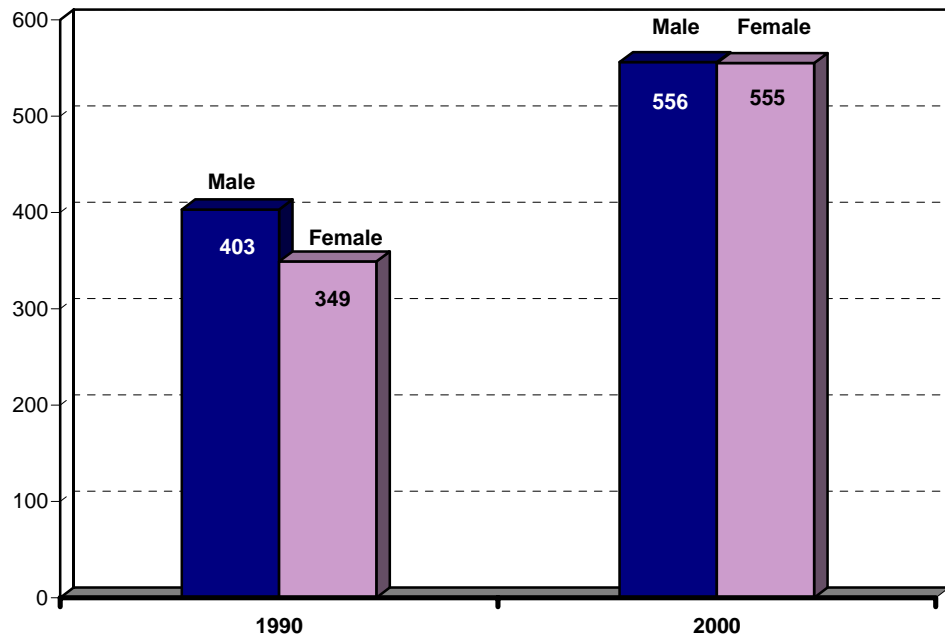


Table 28.

New Transfers by Ethnicity Fall Quarter

Ethnicity	1990	1995	1996	1997	1998	1999	2000	10 Year Δ
• African-American	27 (4%)	17 (2%)	8 (1%)	21 (2%)	13 (1%)	14 (1%)	18 (2%)	-33%
• Mexican-American	64 (9%)	106 (10%)	77 (9%)	78 (8%)	68 (8%)	86 (9%)	101 (9%)	+58%
• Native-American	8 (1%)	11 (1%)	6 (1%)	13 (1%)	9 (1%)	5 (1%)	4 (0%)	-50%
• Asian	86 (11%)	232 (23%)	218 (25%)	224 (23%)	197 (22%)	222 (22%)	279 (25%)	+224%
• Caucasian	474 (63%)	477 (47%)	410 (48%)	437 (45%)	332 (37%)	454 (45%)	459 (41%)	-3%
• Filipino	9 (1%)	49 (5%)	44 (5%)	49 (5%)	45 (5%)	33 (3%)	49 (4%)	+444%
• Latino	24 (3%)	21 (2%)	24 (3%)	30 (3%)	25 (3%)	30 (3%)	34 (3%)	+42%
• Other/Undeclared	60 (8%)	105 (10%)	76 (9%)	113 (12%)	199 (22%)	163 (16%)	167 (15%)	+178%
Total	752	1,018	863	965	888	1,007	1,111	+48%

New transfer enrollments among Asian, and Filipino ethnic groups have more than tripled in a span of ten years.

Table 29.

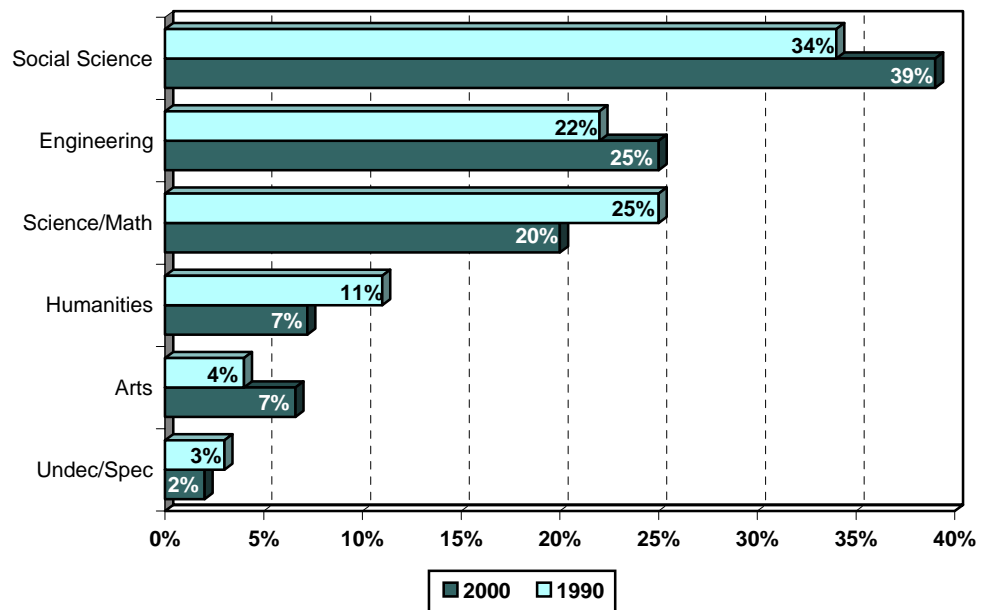
New Transfers by Major Field of Study Fall Quarter

Major Field of Study	1990	1995	1996	1997	1998	1999	2000	10 Year Δ
• Arts	33 (4%)	27 (3%)	40 (5%)	47 (5%)	40 (5%)	63 (6%)	73 (7%)	+121%
• Engineering	167 (22%)	203 (20%)	176 (20%)	197 (20%)	207 (23%)	203 (20%)	278 (25%)	+66%
• Humanities	84 (11%)	84 (8%)	82 (10%)	64 (7%)	67 (8%)	66 (7%)	80 (7%)	-5%
• Science/Math	186 (25%)	364 (36%)	277 (32%)	326 (34%)	263 (30%)	264 (26%)	225 (20%)	+21%
• Social Science	257 (34%)	323 (32%)	266 (31%)	301 (31%)	288 (32%)	394 (39%)	438 (39%)	+70%
• Undeclared/ Special	25 (3%)	17 (2%)	22 (3%)	30 (3%)	23 (3%)	17 (2%)	17 (2%)	-32%
Total	752	1,018	863	965	888	1,007	1,111	+48%

Social Science was by far the most popular field of study among new transfer students in 2000.

Figure 17.

New Transfers by Major Field of Study Fall Quarter



Ninety-five percent of new transfer students attended California community colleges prior to enrolling at UCSD. The largest number of new transfer students come from the San Diego area followed closely by Los Angeles.

Table 30.

New Transfers by Transfer Institution Fall Quarter

Transfer Institution	1990	1995	1996	1997	1998	1999	2000	10 Year Δ
• California Community Colleges	627 (83%)	940 (92%)	815 (94%)	909 (95%)	868 (98%)	983 (98%)	1,057 (95%)	+69%
Transfer Admission Guarantee (TAG)	192	246	185	190	159	184	171	-11%
Non-TAG	560	694	630	719	709	799	886	+58%
• Intercampus Transfer/ Other 4 yr. College	77 (10%)	53 (5%)	42 (5%)	42 (4%)	16 (2%)	12 (1%)	48 (4%)	-38%
• Other/Unknown	48 (6%)	25 (2%)	6 (1%)	14 (1%)	4 (0%)	12 (1%)	6 (1%)	-88%
Total	752	1,018	863	965	888	1,007	1,111	+48%

Table 31.

New Transfers by Home Location Fall Quarter

Home Location	1990	1995	1996	1997	1998	1999	2000	10 Year Δ
• San Diego	441 (59%)	486 (48%)	414 (48%)	428 (44%)	325 (37%)	362 (36%)	362 (33%)	-18%
• Los Angeles	147 (19%)	297 (29%)	250 (29%)	265 (27%)	291 (33%)	320 (32%)	354 (32%)	+141%
• San Francisco	71 (9%)	111 (11%)	95 (11%)	125 (13%)	129 (15%)	152 (15%)	182 (16%)	+156%
• Other California	60 (8%)	72 (7%)	66 (8%)	107 (11%)	100 (11%)	118 (12%)	136 (12%)	+127%
• Out-of-State	13 (2%)	7 (1%)	4 (0%)	4 (0%)	2 (0%)	6 (0%)	6 (1%)	-54%
• Foreign	20 (3%)	41 (4%)	32 (4%)	36 (4%)	41 (5%)	49 (5%)	71 (6%)	+255%
Total	752	1,018	863	965	888	1,007	1,111	+48%

Table 32.

New Transfers by Undergraduate College								Fall Quarter
Undergraduate College	1990	1995	1996	1997	1998	1999	2000	10 Year Δ
• Revelle	93 (12%)	151 (15%)	134 (16%)	132 (14%)	133 (15%)	142 (14%)	160 (14%)	+72%
• John Muir	304 (40%)	260 (26%)	227 (26%)	214 (22%)	193 (22%)	239 (24%)	283 (25%)	-7%
• Thurgood Marshall	160 (21%)	196 (19%)	164 (19%)	224 (23%)	223 (25%)	254 (25%)	247 (22%)	+54%
• Earl Warren	135 (18%)	319 (31%)	277 (32%)	302 (31%)	265 (30%)	264 (26%)	281 (25%)	+108%
• Eleanor Roosevelt	60 (8%)	92 (9%)	61 (7%)	93 (10%)	74 (8%)	108 (11%)	140 (13%)	+133%
Total	752	1,018	863	965	888	1,007	1,111	+48%

In 2000, John Muir and Earl Warren Colleges enrolled the largest number of transfer students.

Figure 18.

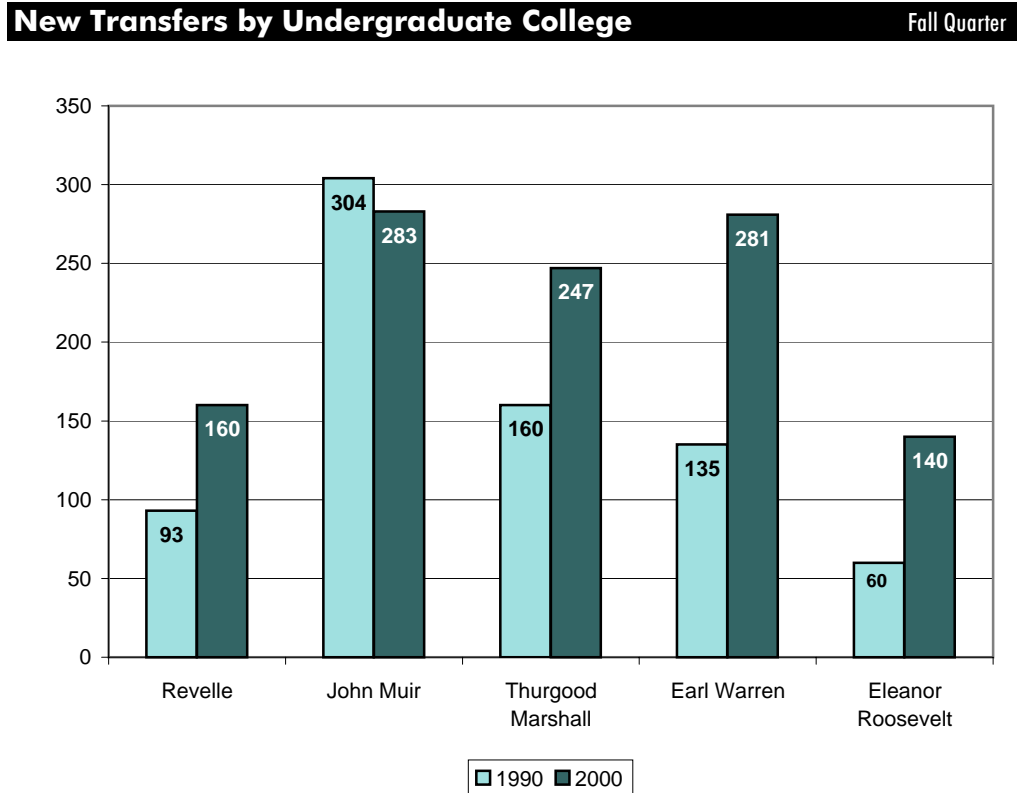


Table 33.

Major* Feeder Transfer Institutions Fall Quarter

School	City	Enrollment N Fall 2000	% of Total Enrollment
San Diego Mesa College	San Diego	143	12.87%
Palomar College	San Marcos	66	5.94%
Southwestern College	Chula Vista	47	4.23%
Grossmont Community College	El Cajon	42	3.78%
Diablo Valley College	Pleasant Hills	40	3.60%
Mira Costa College	Oceanside	40	3.60%
Pasadena City College	Pasadena	40	3.60%
Saddleback Community College South	Mission Viejo	40	3.60%
Santa Monica College	Santa Monica	40	3.60%
De Anza College	Cupertino	36	3.24%
Foothill College	Los Altos Hills	29	2.61%
San Diego City College	San Diego	29	2.61%
Orange Coast College	Costa Mesa	24	2.16%
Moorpark College	Moorpark	23	2.07%
Mount San Antonio College	Walnut	23	2.07%
American River College	Sacramento	15	1.35%
City College of San Francisco	San Francisco	14	1.26%
Fresno City College	Fresno	14	1.26%
College of San Mateo	San Mateo	13	1.17%
El Camino College	Torrance	13	1.17%
Irvine Valley College	Irvine	13	1.17%
Sacramento City College	Sacramento	13	1.17%
Santa Rosa Junior College	Santa Rosa	13	1.17%
San Diego-Miramar College	San Diego	12	1.08%
Sierra College	Rocklin	12	1.08%
Cuyamaca College	El Cajon	11	0.99%
Chabot College	Hayward	10	0.90%
Fullerton College	Fullerton	10	0.90%
Santa Barbara City College	Santa Barbara	10	0.90%
UC Davis	Davis	10	0.90%
Ventura Community College	Ventura	10	0.90%
Glendale Community College	Glendale	9	0.81%
Monterey Peninsula College	Monterey	9	0.81%
Allan Hancock College	Santa Maria	8	0.72%
Los Angeles Pierce College	Woodland Hills	8	0.72%
Los Angeles Valley College	Van Nuys	8	0.72%
Riverside Community College	Riverside	8	0.72%
UC Riverside	Riverside	8	0.72%
West Valley College	Saratoga	8	0.72%
Subtotal (Number of Transfer Institutions = 39)		921	82.90%
Other Institutions (Number of Transfer Institutions = 65)		190	17.10%
Total (Number of Transfer Institutions = 104)		1,111	100.00%

* Eight or more matriculants from named transfer institution.

With 143 transfer students (12.87% of the total), San Diego Mesa College tops the list of major feeder transfer institutions.



**New
Transfer
Student
Academic
Preparation**

■ Academic Preparation: New Transfer Students

Table 34.

New Transfer Cohort by Transfer GPA Averages							Fall Quarter
Transfer	1990	1995	1996	1997	1998	1999	2000
• Transfer GPA	3.15	3.20	3.27	3.29	3.27	3.25	3.29

Table 35.

New Transfer Cohort by Academic Indicator Ranges			Fall Quarter
Transfer GPA Range	Percentage in Range		
	1990	2000	
• 4.00	1%	2%] 21%
• 3.90 - 3.99	2%	2%	
• 3.60 - 3.89	15%	17%	
• 3.30 - 3.59	25%	28%	
• Low - 3.29	57%	51%	
Total	100%	100%	

The mean transfer GPA for the 2000 new transfer cohort was 3.29.

Approximately, 21% of the new transfer cohort had a GPA of 3.60 and higher.



■ **Degrees
Conferred**

■ Degrees Conferred

Setting a new record, UCSD awarded more than forty-five hundred undergraduate, graduate and professional degrees in 1999/2000.

Table 36.

Degrees Conferred: All Degree Types Fall Quarter

All Degree Types	1989/1990	1995/1996	1996/1997	1997/1998	1998/1999	1999/2000	10 Year Δ
• Bachelors	2,677	3,319	3,319	3,221	3,574	3,530	+32%
• Masters	357	384	364	404	358	408	+14%
• Candidate in Philosophy	158	149	148	178	120	150	-5%
• Doctor of Philosophy	185	259	281	310	303	294	+59%
• Doctor of Medicine	131	38	202	102	35	130	-1%
Total	3,508	4,149	4,314	4,215	4,390	4,512	+29%

Figure 19.

Degrees Conferred Undergraduate and Graduate Degree Trends Fall Quarter

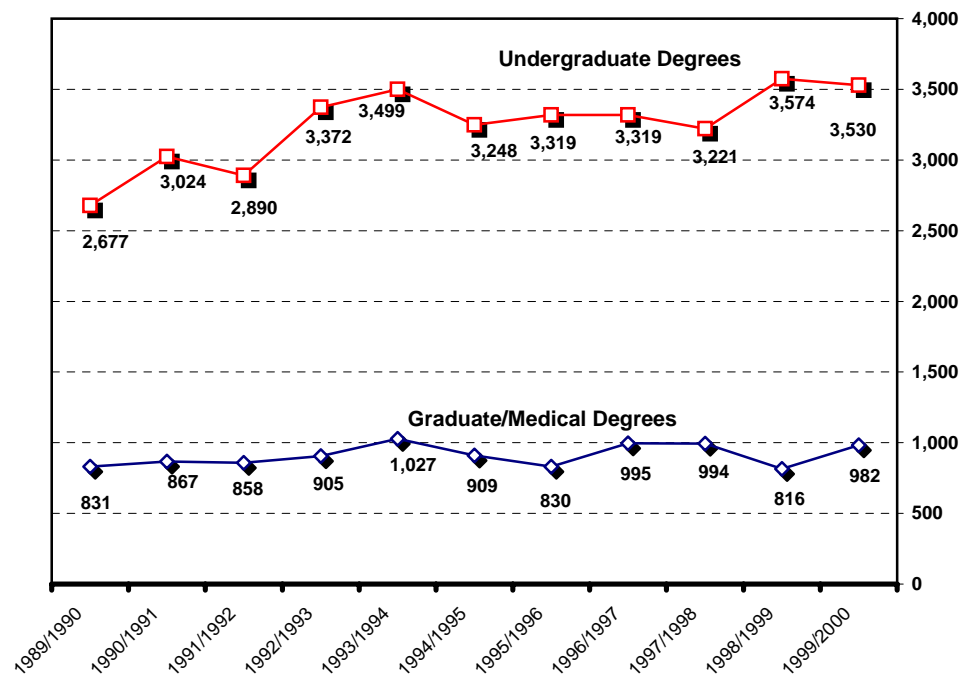


Table 37.

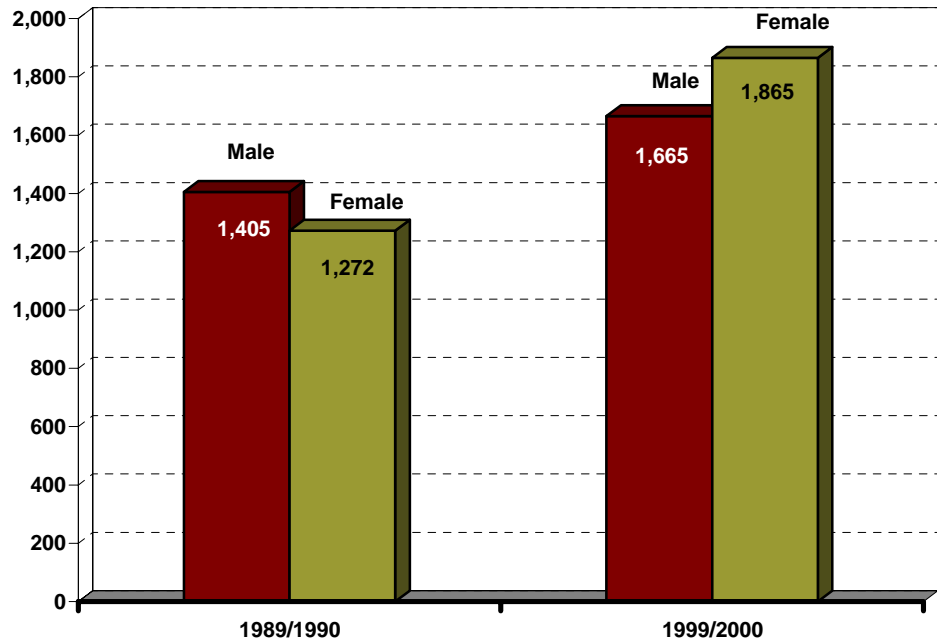
Undergraduate Degrees by Gender Fall Quarter

Gender	1989/1990	1995/1996	1996/1997	1997/1998	1998/1999	1999/2000	10 Year Δ
• Male	1,405 (52%)	1,614 (49%)	1,656 (50%)	1,554 (48%)	1,728 (48%)	1,665 (47%)	+19%
• Female	1,272 (48%)	1,705 (51%)	1,663 (50%)	1,667 (52%)	1,846 (52%)	1,865 (53%)	+47%
Total UG Degrees	2,677	3,319	3,319	3,221	3,574	3,530	+32%

Of the 3,530 undergraduate degrees awarded in 1999/2000, the majority (53%) were awarded to women.

Figure 20.

Undergraduate Degrees by Gender Fall Quarter



Reflecting the changing profile of undergraduates on campus, more than twice the number of historically under-represented students earned bachelors degrees from UCSD in 1999/2000 than in 1989/90.

Table 38.

Undergraduate Degrees by Ethnicity Fall Quarter

Ethnicity	1989/1990	1995/1996	1996/1997	1997/1998	1998/1999	1999/2000	10 Year Δ
• African-American	51 (2%)	77 (2%)	68 (2%)	72 (2%)	57 (2%)	65 (2%)	+27%
• Mexican-American	121 (5%)	281 (8%)	277 (8%)	279 (9%)	276 (8%)	255 (7%)	+111%
• Native-American	13 (<1%)	39 (1%)	20 (1%)	29 (1%)	24 (1%)	35 (1%)	+169%
• Asian	334 (12%)	690 (21%)	784 (24%)	807 (25%)	1,005 (28%)	1,011 (29%)	+203%
• Caucasian	1,814 (68%)	1,731 (52%)	1,644 (50%)	1,494 (46%)	1,616 (45%)	1,482 (42%)	-18%
• Filipino	104 (4%)	139 (4%)	145 (4%)	185 (6%)	173 (5%)	213 (6%)	+105%
• Latino	71 (3%)	69 (2%)	89 (3%)	78 (2%)	84 (2%)	64 (2%)	-10%
• Other/Undeclared	169 (6%)	293 (9%)	292 (9%)	277 (9%)	339 (9%)	405 (11%)	+140%
Total UG Degrees	2,677	3,319	3,319	3,221	3,574	3,530	+32%

Figure 21.

Undergraduate Degrees by Ethnicity Fall Quarter

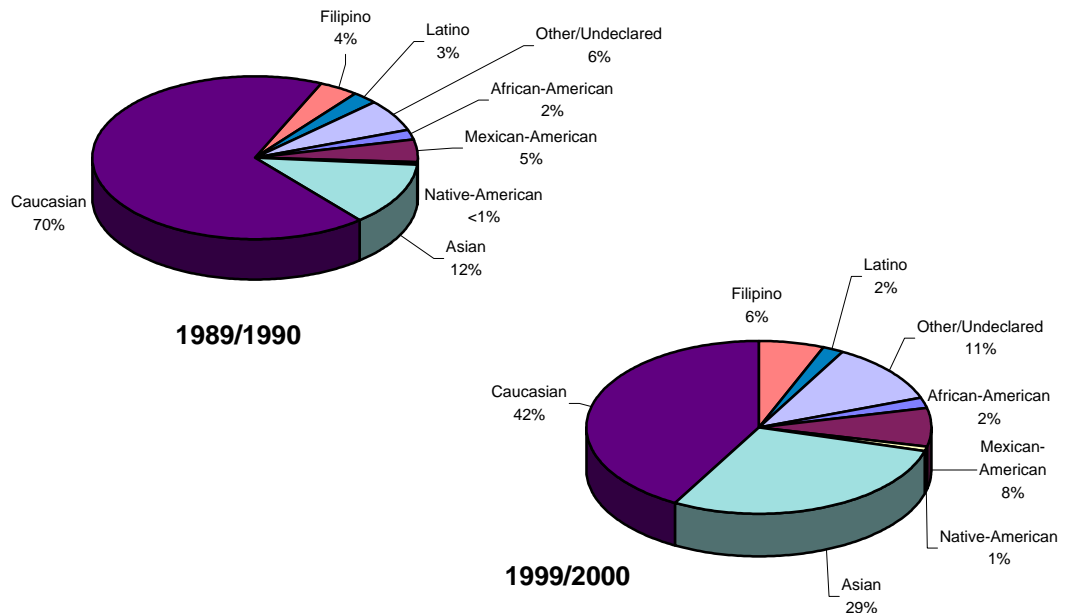


Table 39.

Undergraduate Degrees by Major Field of Study							Fall Quarter
Major Field of Study	1989/1990	1995/1996	1996/1997	1997/1998	1998/1999	1999/2000	10 Year Δ
• Arts	146 (6%)	161 (5%)	168 (5%)	123 (4%)	156 (4%)	147 (4%)	+1%
• Engineering	401 (15%)	424 (13%)	398 (12%)	402 (12%)	446 (13%)	533 (15%)	+33%
• Humanities	249 (9%)	305 (9%)	307 (9%)	291 (9%)	312 (9%)	250 (7%)	+0%
• Science/Math	626 (23%)	1,030 (31%)	1,122 (34%)	1,040 (32%)	1,160 (32%)	1,102 (31%)	+76%
• Social Science	1,147 (43%)	1,388 (42%)	1,320 (40%)	1,362 (42%)	1,494 (42%)	1,494 (42%)	+30%
• Double/Special	108 (4%)	11 (0%)	4 (0%)	3 (0%)	6 (0%)	4 (0%)	-96%
Total UG Degrees	2,677	3,319	3,319	3,221	3,574	3,530	+32%

Over 40% of the 1999/2000 graduating class were Social Science majors; nearly one-third were Science or Math majors.

Table 40.

Undergraduate Degrees by College							Fall Quarter
College	1989/1990	1995/1996	1996/1997	1997/1998	1998/1999	1999/2000	10 Year Δ
• Revelle	570 (21%)	635 (19%)	599 (18%)	564 (18%)	708 (20%)	682 (19%)	+20%
• John Muir	807 (30%)	909 (27%)	846 (25%)	840 (26%)	837 (23%)	766 (22%)	-5%
• Thurgood Marshall	618 (23%)	675 (20%)	652 (20%)	635 (20%)	751 (21%)	771 (22%)	+25%
• Earl Warren	682 (26%)	749 (23%)	845 (25%)	856 (27%)	888 (25%)	938 (27%)	+38%
• Eleanor Roosevelt	NA* NA*	351 (11%)	377 (11%)	326 (10%)	390 (11%)	373 (11%)	NA
Total UG Degrees	2,677	3,248	3,319	3,319	3,221	3,530	+32%

* Eleanor Roosevelt College enrolled its first class of undergraduates in 1988.

Table 41.

Time-to-Degree*/Academic Performance
Entered UCSD from High School Fall Quarter

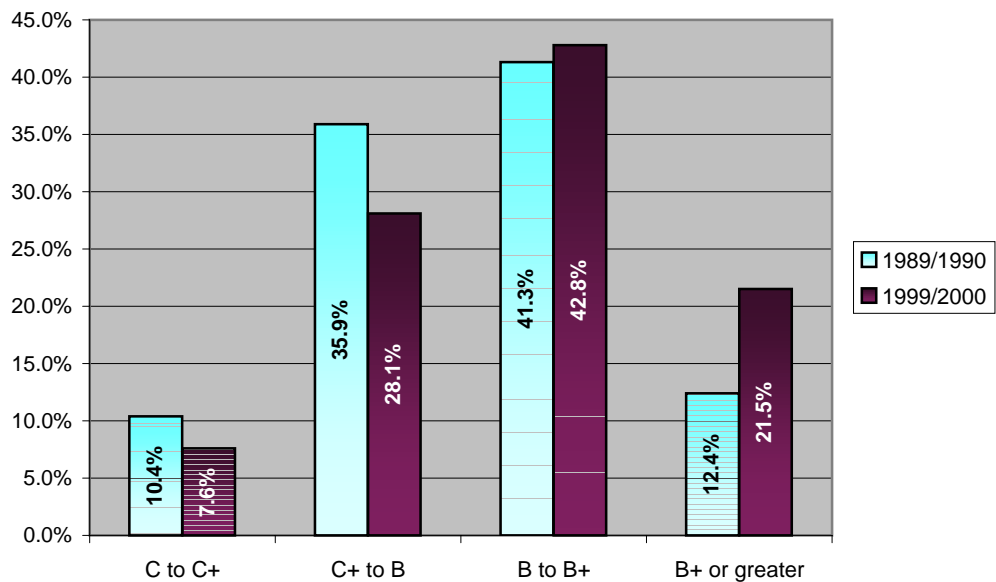
Undergraduate Degrees	1989/1990	1995/1996	1996/1997	1997/1998	1998/1999	1999/2000
• Time-to-Degree						
Average Elapsed Time in Years	4.9 yrs.	4.5 yrs.	4.4 yrs.	4.4 yrs.	4.4 yrs.	4.5 yrs.
Average Elapsed Time in Quarters	14.1 qtrs.	13.4 qtrs.	13.3 qtrs.	13.3 qtrs.	13.3 qtrs.	13.5 qtrs.
• GPA at Graduation						
GPA ≥ 3.5 (B+ or greater)	12.4%	21.9%	21.9%	21.0%	21.5%	21.5%
3.00 ≤ GPA < 3.5 (B to B+)	41.3%	44.3%	42.5%	44.0%	42.6%	42.8%
2.50 ≤ GPA < 3.00 (C+ to B)	35.9%	27.1%	28.5%	27.8%	28.2%	28.1%
2.0 ≤ GPA < 2.50 (C to C+)	10.4%	6.7%	7.0%	7.2%	7.7%	7.6%

* Time-to-degree is reported in elapsed quarters from first enrollment date to graduation. Only the records of students who enter UCSD in the Fall Quarter are included in time-to-degree calculations. An academic year is defined as three quarters; twelve quarters equal four years. Summer degrees are combined with Fall degrees, and combined, represent one quarter.

The average time-to-degree for undergraduate students entering from high school was just over 13 quarters or 4.5 years. The mean GPA for the 1999/2000 graduating class was 3.14.

Figure 22.

Grade Distribution: 1999/2000 Degree Recipients Fall Quarter



Community College transfers complete their degree requirements at UCSD in nine quarters or three years. The mean GPA for the 1999/2000 graduating class for courses taken at UCSD was 3.01.

Table 42.

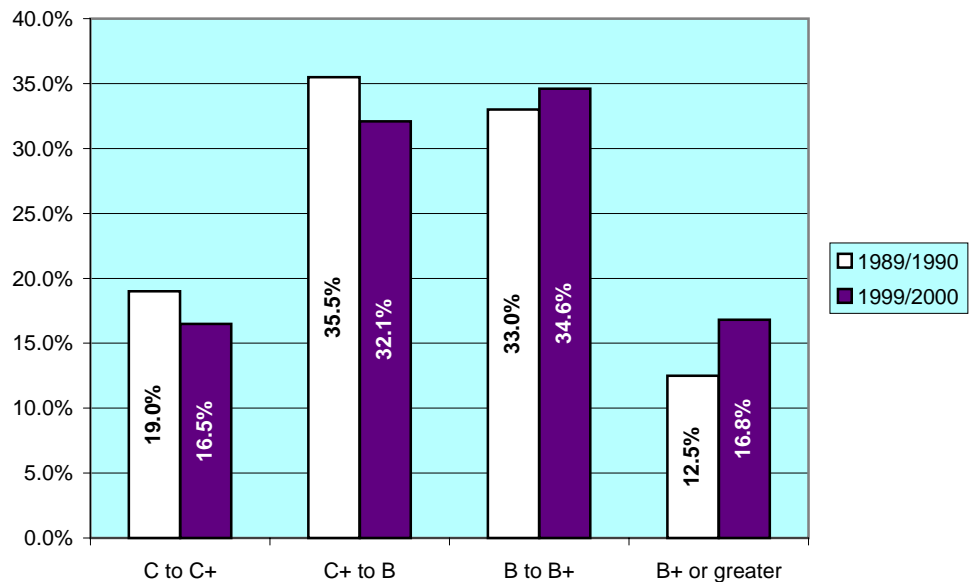
Time-to-Degree*/Academic Performance
Entered UCSD from a Two-Year Community College Fall Quarter

Undergraduate Degrees	1989/1990	1995/1996	1996/1997	1997/1998	1998/1999	1999/2000
• Time-to-Degree						
Average Elapsed Time in Years	3.9 yrs.	3.0 yrs.	2.9 yrs.	3.0 yrs.	2.9 yrs.	3.0 yrs.
Average Elapsed Time in Quarters	10.8 qtrs.	8.9 qtrs.	8.8 qtrs.	8.9 qtrs.	8.7 qtrs.	9.0 qtrs.
• GPA at Graduation	2.95	3.03	3.02	3.03	3.04	3.01
GPA ≥ 3.5 (B+ or greater)	12.5%	17.9%	17.3%	17.3%	17.7%	16.8%
3.00 ≤ GPA < 3.5 (B to B+)	33.0%	35.4%	35.5%	36.7%	36.5%	34.6%
2.50 ≤ GPA < 3.00 (C+ to B)	35.5%	32.3%	32.1%	32.4%	32.1%	32.1%
2.0 ≤ GPA < 2.50 (C to C+)	19.0%	14.4%	15.2%	13.6%	13.7%	16.5%

* Time-to-degree is reported in elapsed quarters from first enrollment date to graduation. Only the records of students who enter UCSD in the Fall Quarter are included in time-to-degree calculations. An academic year is defined as three quarters; twelve quarters equal four years. Summer degrees are combined with Fall degrees, and combined, represent one quarter.

Figure 23.

Grade Distribution: 1999/2000 Degree Recipients Fall Quarter





**■ Appendix:
Undergraduate
Major Fields
of Study /
Academic
Departments**

■ Undergraduate Major Fields of Study/Academic Departments

ARTS

Music Department

- MU25 Music
- MU26 Music Humanities
- MU27 Interdisciplinary Computing and the Arts

Theatre & Dance Department

- TH26 Theatre
- TH27 Dance

Visual Arts Department

- VA26 Visual Arts (Art History/Criticism)
- VA27 Visual Arts (Media)
- VA28 Visual Arts (Studio)
- VA29 Interdisciplinary Computing and the Arts

SCHOOL OF ENGINEERING

Bioengineering Department

- BE01 Pre-Bioengineering
- BE02 Pre-Bioengineering: Pre-Medical
- BE25 Bioengineering
- BE26 Bioengineering: Pre-Medical
- BE27 Bioengineering: Biotechnology

Chemical Engineering Program

- CE01 Pre-Chemical Engineering
- CE25 Chemical Engineering

Computer Science and Engineering Department

- CS25 Computer Engineering (see also Electrical and Computer Engineering EC26)
- CS26 Computer Science
- CS01 Pre-Computer Engineering
- CS02 Pre-Computer Science

Electrical and Computer Engineering Department

- EC26 Computer Engineering (see also Computer Science and Engineering CS25)
- EC27 Electrical Engineering
- EC28 Engineering Physics
- EC02 Pre-Computer Engineering
- EC03 Pre-Electrical Engineering
- EC04 Pre-Engineering Physics

Mechanical and Aerospace Engineering Department

- MC01 Pre-Aerospace Engineering
- MC02 Pre-Chemical Engineering
- MC03 Pre-Mechanical Engineering
- MC04 Pre-Engineering Science
- MC25 Aerospace Engineering
- MC26 Chemical Engineering
- MC27 Mechanical Engineering
- MC28 Engineering Science

Structural Engineering

- SE01 Pre-Aerospace Engineering
- SE02 Pre-Engineering Sciences
- SE03 Pre-Structural Engineering
- SE25 Aerospace Engineering
- SE26 Engineering Sciences
- SE27 Structural Engineering

SCIENCE AND MATH

Biology Department

- BI01 Pre-Animal Physiology and Neuroscience
- BI02 Pre-Biochemistry and Cell Biology
- BI03 Pre-Ecology, Behavior and Evolution
- BI04 Pre-General Biology
- BI05 Pre-Microbiology
- BI06 Pre-Molecular Biology
- BI28 Animal Physiology and Neuroscience
- BI29 Biochemistry and Cell Biology (see also Chemistry CH31)
- BI30 Ecology, Behavior and Evolution
- BI31 General Biology
- BI32 Microbiology
- BI33 Molecular Biology

Chemistry and Biochemistry Department

- CH31 Biochemistry/Chemistry (see also Biology BI29)
- CH25 Chemistry
- CH33 Chemical Education
- CH32 Chemical Physics
- CH28 Chemistry with Specialization in Earth Sciences
- CH34 Environmental Chemistry
- CH35 Pharmacological Chemistry

Earth Sciences Program

- EA25 Earth Sciences

Environmental Systems

- ES25 Environmental Systems (Earth Sciences)
- ES26 Environmental Systems (Ecology, Behavior, & Evolution)
- ES27 Environmental Systems (Environmental Chemistry)
- ES28 Environmental Systems (Environmental Policy)

Mathematics Department

- MA28 Applied Mathematics (Scientific Programming)
- MA29 Mathematics
- MA27 Mathematics (Applied)
- MA31 Mathematics/Applied Science
- MA30 Mathematics-Computer Science
- MA32 Mathematics/Secondary Education
- MA33 Joint Major in Mathematics & Economics

Physics Department

- PY30 General Physics
- PY31 General Physics, Secondary Education
- PY29 Physics
- PY26 Physics-Biophysics
- PY28 Physics with Specialization in Earth Sciences
- PY32 Physics with Specialization in Materials Physics
- PY33 Physics with Specialization in Computational Physics

HUMANITIES

Classical Studies

CL25 Classical Studies

History Department

HI25 History

Literature Department

LT29 French Literature
 LT31 German Literature
 LT35 Italian Literature
 LT36 Literatures in English
 LT38 Literatures of the World
 LT37 Literature/Composite Major
 LT34 Literature/Writing
 LT01 Pre-Literature/Writing
 LT32 Russian Literature
 LT33 Spanish Literature

Philosophy Department

PL25 Philosophy

SOCIAL SCIENCE

Anthropology Department

AN25 Anthropology
 AN26 Anthropology (Concentration in Biological Anthropology)
 AN27 Anthropology (Concentration in Archaeology)

Chinese Studies

CN25 Chinese Studies

Cognitive Science Department

CG25 Cognitive Science
 CG26 Cognitive Science with Specialization in
 Clinical Applications
 CG27 Cognitive Science with Specialization in Computation
 CG28 Cognitive Science with Specialization in
 Human Cognition
 CG29 Cognitive Science with Specialization in Neuroscience
 CG30 Cognitive Science with Specialization in Hum. Comp. Inter.

Communication Department

CM26 Communication

Critical Gender Studies

CR25 Critical Gender Studies

Economics Department

EN25 Economics
 EN26 Management Science
 EN28 Joint Major in Mathematics & Economics

Ethnic Studies Department

ET25 Ethnic Studies

German Studies

GS25 German Studies

Human Development Program

HD25 Human Development

Italian Studies

IT25 Italian Studies

SOCIAL SCIENCE - continued

Japanese Studies

JA25 Japanese Studies

Judaic Studies

JU25 Judaic Studies

Latin American Studies

LA25 Latin American Studies

Linguistics Department

LN25 Linguistics
 LN29 Linguistics (Specialization in Language and Society)
 LN32 Linguistics (Specialization in Cognition & Language)
 LN33 Linguistics (Specialization in [the language of
 specialization])

Political Science Department

PS25 Political Science
 PS26 Political Science-American Politics
 PS27 Political Science-Comparative Politics
 PS28 Political Science-International Relations
 PS29 Political Science-Political Theory
 PS30 Political Science-Public Law
 PS31 Political Science-Public Policy

Psychology Department

PC26 Psychology

Program for the Study of Religion

RE26 Study of Religion

Russian and Soviet Studies

RU25 Russian and Soviet Studies

Sociology Department

SO25 Sociology

Third World Studies

TW25 Third World Studies

Urban Studies and Planning Program

US26 Urban Studies and Planning

SPECIAL AND UNDECLARED

Individual Studies

IN27 Eleanor Roosevelt College Individual Studies
 IN25 Muir College Special Project Major
 IN26 Revelle College Individual Major
 IN29 Thurgood Marshall College Individual Studies
 IN28 Warren College Individual Studies

Undeclared

UN27 Undeclared

Limited Status

Special-Employee