



University of California,
San Diego

FALL 2002



■ STUDENT

digest

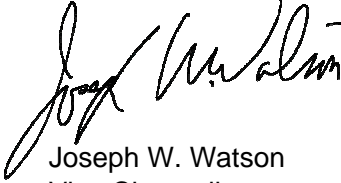
**Enrollment
and Academic
Performance
Statistics**

Office of Student Research & Information
Student Affairs

<http://ugr8.ucsd.edu>

■ INTRODUCTION

The *Student Digest*, published annually by the Office of Student Research and Information, provides the campus community with a broad overview of trends in undergraduate enrollments, academic performance and graduation statistics. If you have questions or comments regarding this publication, please contact the Office of Student Research and Information/Student Affairs at (858) 534-2382. If you wish to view this report and other statistical reports, they can be found on the World Wide Web at <http://ugr8.ucsd.edu>.



Joseph W. Watson
Vice Chancellor

STUDENT DIGEST

Enrollment and Academic Performance Statistics

Fall 2002

University of California, San Diego

William B. Armstrong, Ph.D.
Director

Heidi M. Carty, Ph.D.
Assistant Director

Greg Martin
Programmer Analyst

Jason R. Thornton
Assistant Research Analyst

Student Research & Information
Student Affairs
University of California, San Diego
La Jolla, CA 92093-0088
<http://ugr8.ucsd.edu>

■Table of Contents

| | |
|--|-----------|
| Total Campus Enrollment | 4 |
| Total Campus Population Summary | 5 |
| Total Undergraduate Enrollment | 6 |
| By Class Level | 7 |
| By Gender | 8 |
| By Ethnicity | 9 |
| By Major Field of Study | 10 |
| By Major Department | 11 |
| By College | 12 |
| Academic Profile: Undergraduates | 13 |
| Total Undergraduate Population Summary | 14 |
| By Class Level | 15 |
| By Major Field of Study | 16 |
| New Students | 17 |
| New Student Enrollments | 18 |
| First-Time Freshmen | 19 |
| Applicants, Admits & Registered | 20 |
| By Gender | 21 |
| By Ethnicity | 22 |
| By Major Field of Study | 23 |
| by Major Department at Time of Admission | 24 |
| By College & Home Location | 25 |
| By 1st Generation College Status & Income Group | 26 |
| Major Feeder High Schools | 27 |
| High School Grades and SAT Scores | 28 |
| Indicators of Academic Preparation | 29 |
| High School GPA by Gender, Ethnicity, Major Field of Study, Home Location, 1st Generation College Status & Income | 30 |
| SAT I Scores by Gender, Ethnicity, Major Field of Study, Home Location, 1st Generation College Status & Income | 31 |
| SAT II Scores by Gender, Ethnicity, Major Field of Study, Home Location, 1st Generation College Status & Income | 32 |
| UCSD/UC Systemwide Comparison | 33 |
| New Transfer Students | 34 |
| Applicants, Admits & Registered | 35 |
| By Gender | 36 |
| By Ethnicity | 37 |
| By Major Field of Study | 38 |
| By Transfer Institution & Home Location | 39 |
| By Undergraduate College | 40 |
| By 1st Generation College Status & Income Group | 41 |
| Major Feeder Transfer Institutions | 42 |
| New Transfer Student Academic Preparation | 43 |
| Indicators of Academic Preparation | 44 |
| Degrees Conferred | 45 |
| All Degree Types | 46 |
| Bachelor Degrees by Gender | 47 |
| Bachelor Degrees by Ethnicity | 48 |
| Bachelor Degrees by Major Field of Study & College | 49 |
| Bachelor Degrees by First Generation College Status & Income | 50 |
| Time-to-Degree/Academic Performance for Students Who Entered UCSD from High School | 51 |
| Time-to-Degree/Academic Performance for Students Who Entered UCSD from a Two-Year Community College | 52 |
| Appendix: Undergraduate Major Fields of Study/ Academic Departments | 53 |



**■ Total
Campus
Enrollment**

■ TOTAL CAMPUS ENROLLMENT

More than twenty-three thousand students are enrolled at UCSD - showing an increase of 29% over the past decade. UCSD also enrolled a record number of 19,088 undergraduate students, and 4,460 graduate and medical students.

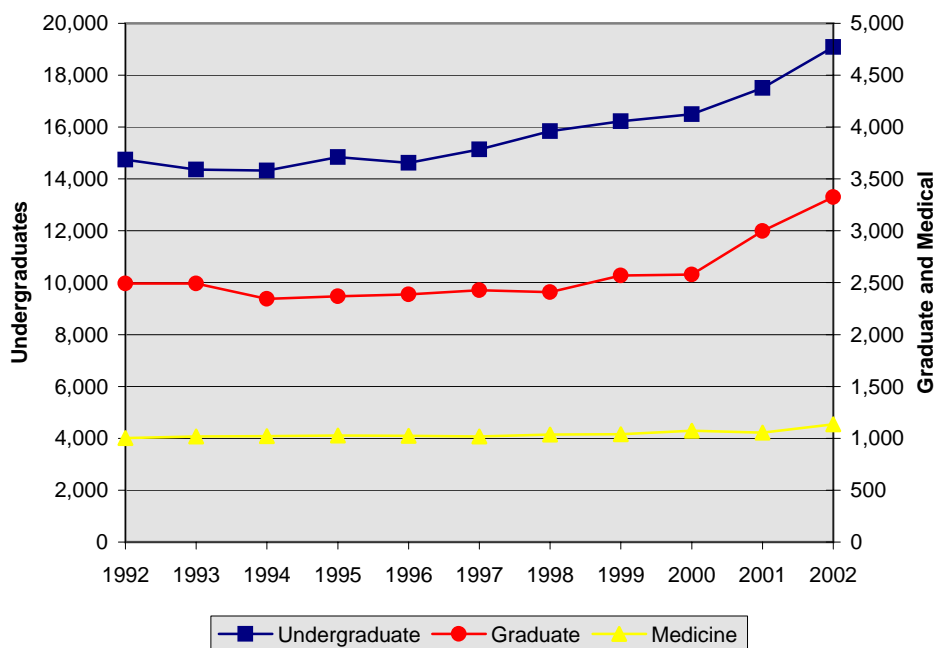
Table 1.

Total Campus Enrollment: The Past Decade Fall Quarter

| UCSD Enrollment | 1992 | 1997 | 1998 | 1999 | 2000 | 2001 | 2002 | 10 Year Δ |
|------------------------------------|---------------|---------------|---------------|---------------|---------------|---------------|---------------|-------------|
| • Undergraduate | 14,749 | 15,140 | 15,837 | 16,230 | 16,496 | 17,505 | 19,088 | +29% |
| • Graduate | 2,383 | 2,427 | 2,408 | 2,570 | 2,579 | 2,999 | 3,324 | +39% |
| • Teacher Education Program (TEP)* | 108 | 81 | 88 | 78 | 64 | 9 | 0 | -100% |
| • Medicine | 1,001 | 1,019 | 1,037 | 1,040 | 1,073 | 1,055 | 1,136 | +13% |
| Total Campus Enrollment | 18,241 | 18,667 | 19,370 | 19,918 | 20,212 | 21,568 | 23,548 | +29% |

Figure 1.

Total Campus Enrollment: The Past Decade Fall Quarter



* Note: TEP numbers have dropped in 2001 due to a programmatic change with the TEP program. Students in the TEP program are now able to earn a master's degree in education. The newly enrolled TEP students in the M.Ed. program are counted as graduate students.



■ Total Undergraduate Enrollment

Undergraduate Enrollment

Undergraduate enrollments have increased by 29% over the past ten years. The majority of undergraduate students (58%) at UCSD are upper division students.

Table 2.

| Undergraduate Enrollment by Class Level | | | | | | | | Fall Quarter |
|---|---------------------|---------------------|---------------------|---------------------|---------------------|----------------------|----------------------|--------------|
| The Undergraduates | 1992 | 1997 | 1998 | 1999 | 2000 | 2001 | 2002 | 10 Year Δ |
| • Lower Division | 5,943 40% | 6,246 41% | 6,809 43% | 6,811 42% | 6,557 40% | 7,214 41% | 8,059 42% | +36% |
| Freshman | 3,050 | 3,620 | 3,770 | 3,651 | 3,366 | 4,185 | 4,350 | +43% |
| Sophomore | 2,893 | 2,626 | 3,039 | 3,160 | 3,191 | 3,029 | 3,709 | +28% |
| • Upper Division | 8,806 60% | 8,894 59% | 9,028 57% | 9,419 58% | 9,939 60% | 10,291 59% | 11,029 58% | +25% |
| Junior | 4,010 | 4,175 | 3,875 | 4,319 | 4,640 | 4,705 | 4,920 | +23% |
| Senior | 4,796 | 4,719 | 5,153 | 5,100 | 5,299 | 5,586 | 6,109 | +27% |
| Total UG Enrollment | 14,749 | 15,140 | 15,837 | 16,230 | 16,496 | 17,505 | 19,088 | +29% |

Figure 2.

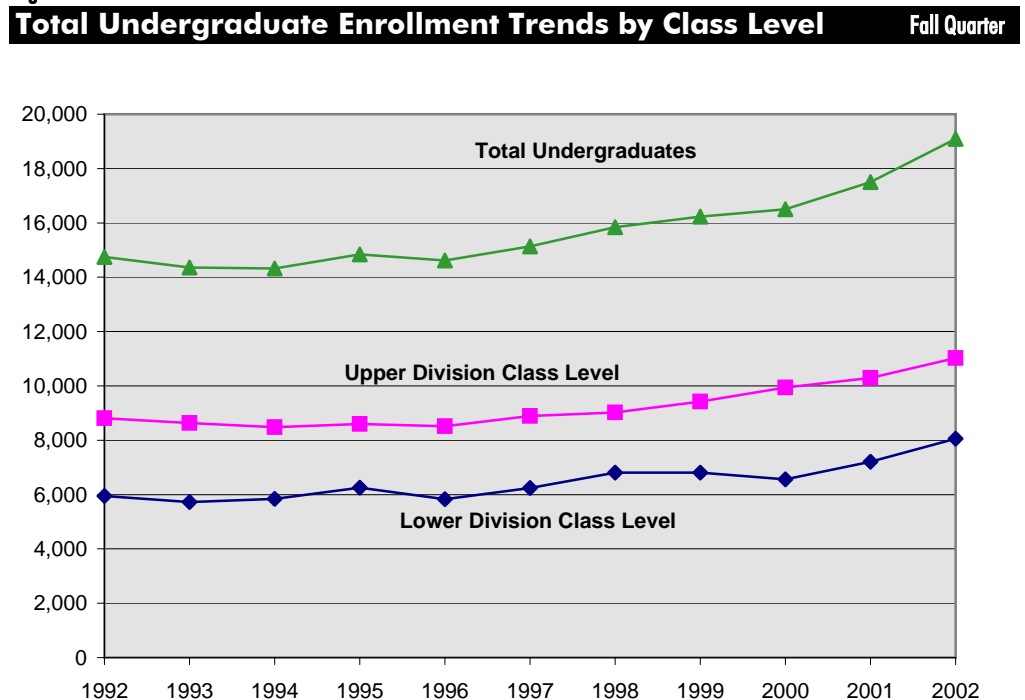


Table 3.

Undergraduates by Gender Fall Quarter

| Gender | 1992 | 1997 | 1998 | 1999 | 2000 | 2001 | 2002 | 10 Year Δ |
|----------------------------|---------------|---------------|---------------|---------------|---------------|---------------|---------------|-------------|
| • Male | 7,583 51% | 7,436 49% | 7,683 49% | 7,759 48% | 7,891 48% | 8,400 48% | 9,175 48% | +21% |
| • Female | 7,166 49% | 7,704 51% | 8,154 51% | 8,471 52% | 8,605 52% | 9,105 52% | 9,913 52% | +38% |
| Total UG Enrollment | 14,749 | 15,140 | 15,837 | 16,230 | 16,496 | 17,505 | 19,088 | +29% |

Women outnumber men at UCSD by approximately four percent.

Figure 3.

Undergraduate Enrollment by Gender Fall Quarter

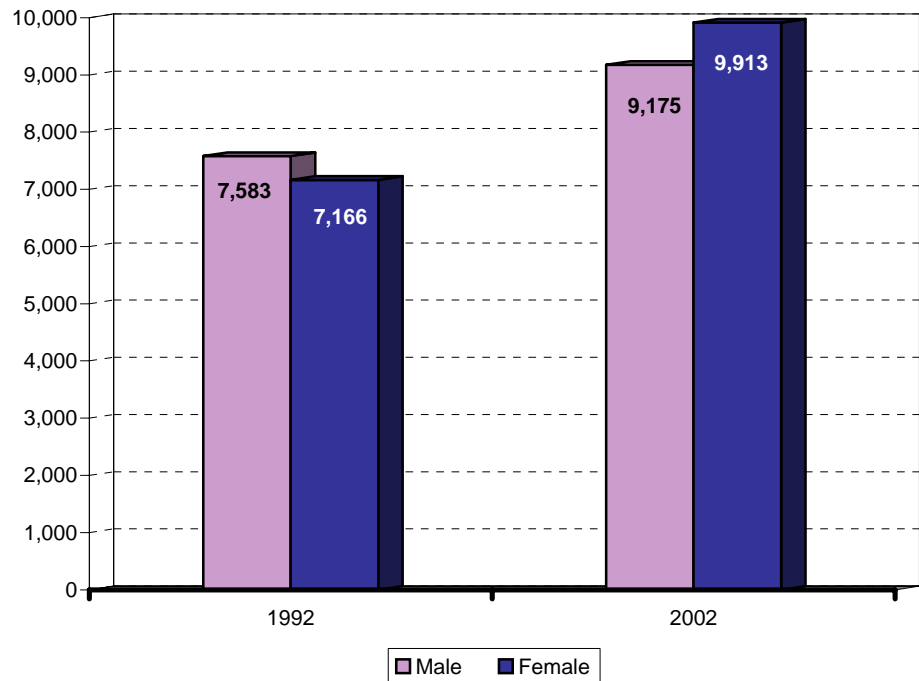


Table 4.

Undergraduates by Ethnicity **Fall Quarter**

| Ethnicity | 1992 | 1997 | 1998 | 1999 | 2000 | 2001 | 2002 | 10 Year Δ |
|----------------------------|---------------|---------------|---------------|---------------|---------------|---------------|---------------|-------------|
| • African-American | 375 3% | 303 2% | 277 2% | 257 2% | 224 1% | 211 1% | 219 1% | -42% |
| • Mexican-American | 1,174 8% | 1,303 9% | 1,216 8% | 1,226 8% | 1,282 8% | 1,322 8% | 1,475 8% | +26% |
| • Native-American | 127 1% | 139 1% | 134 1% | 119 1% | 99 1% | 81 0% | 91 0% | -28% |
| • Asian | 2,738 19% | 4,399 29% | 4,632 29% | 4,802 30% | 4,948 30% | 5,554 32% | 6,426 34% | +135% |
| • Caucasian | 8,112 55% | 6,298 42% | 6,323 40% | 6,403 39% | 6,429 39% | 6,652 38% | 6,981 37% | -14% |
| • Filipino | 568 4% | 831 5% | 874 6% | 869 5% | 850 5% | 896 5% | 956 5% | +68% |
| • Latino | 388 3% | 321 2% | 339 2% | 350 2% | 374 2% | 375 2% | 428 2% | +10% |
| • Other/Undeclared | 1,267 9% | 1,546 10% | 2,042 13% | 2,204 13% | 2,290 14% | 2,414 14% | 2,512 13% | +98% |
| Total UG Enrollment | 14,749 | 15,140 | 15,837 | 16,230 | 16,496 | 17,505 | 19,088 | +29% |

Compared to 1992, there has been an increase in the proportion of Asian students among the undergraduate population. At the same time, there has been a decrease in the proportion of African American and Caucasian students.

Figure 4.

Undergraduate Enrollment by Ethnicity **Fall Quarter**

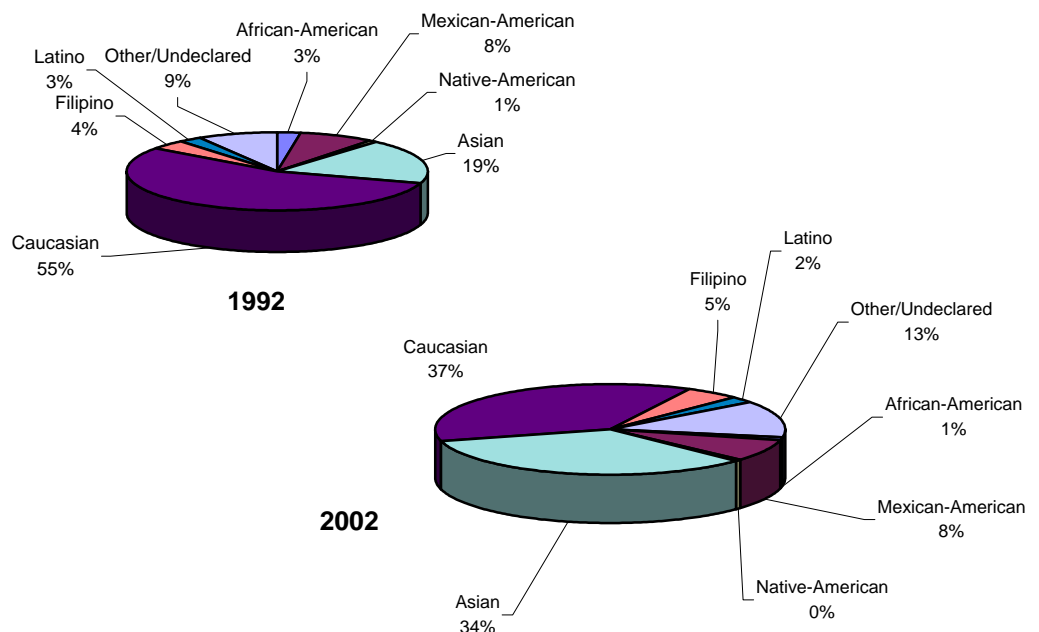


Table 5.

Undergraduates by Major Field of Study Fall Quarter

| Major Field of Study | 1992 | 1997 | 1998 | 1999 | 2000 | 2001 | 2002 | 10 Year Δ |
|----------------------------|---------------|---------------|---------------|---------------|---------------|---------------|---------------|-------------|
| • Arts | 531 4% | 474 3% | 565 4% | 695 4% | 800 5% | 931 5% | 1,047 5% | +97% |
| • Engineering | 2,676 18% | 2,869 19% | 2,981 19% | 3,136 19% | 3,320 20% | 3,855 22% | 4,284 22% | +60% |
| • Humanities | 1,065 7% | 885 6% | 822 5% | 803 5% | 748 5% | 740 4% | 806 4% | -24% |
| • Science/Math | 3,982 27% | 4,771 32% | 4,863 31% | 4,769 30% | 4,444 27% | 4,254 24% | 4,405 23% | +11% |
| • Social Science | 4,669 32% | 4,265 28% | 4,567 29% | 5,067 31% | 5,487 33% | 5,830 33% | 6,177 32% | +32% |
| • Undec./Special | 1,826 12% | 1,876 12% | 2,039 13% | 1,760 11% | 1,697 10% | 1,895 11% | 2,369 12% | +30% |
| Total UG Enrollment | 14,749 | 15,140 | 15,837 | 16,230 | 16,496 | 17,505 | 19,088 | +29% |

The Social Sciences continue to be the most popular undergraduate field of study at UCSD.

Figure 5.

Undergraduate Enrollment by Major Field of Study Fall Quarter

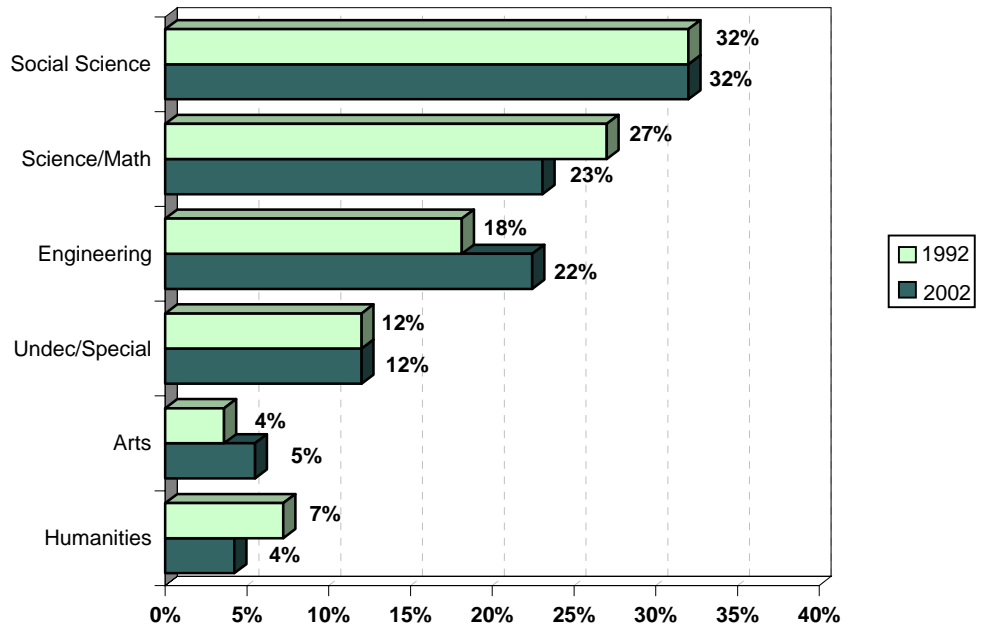


Table 6.

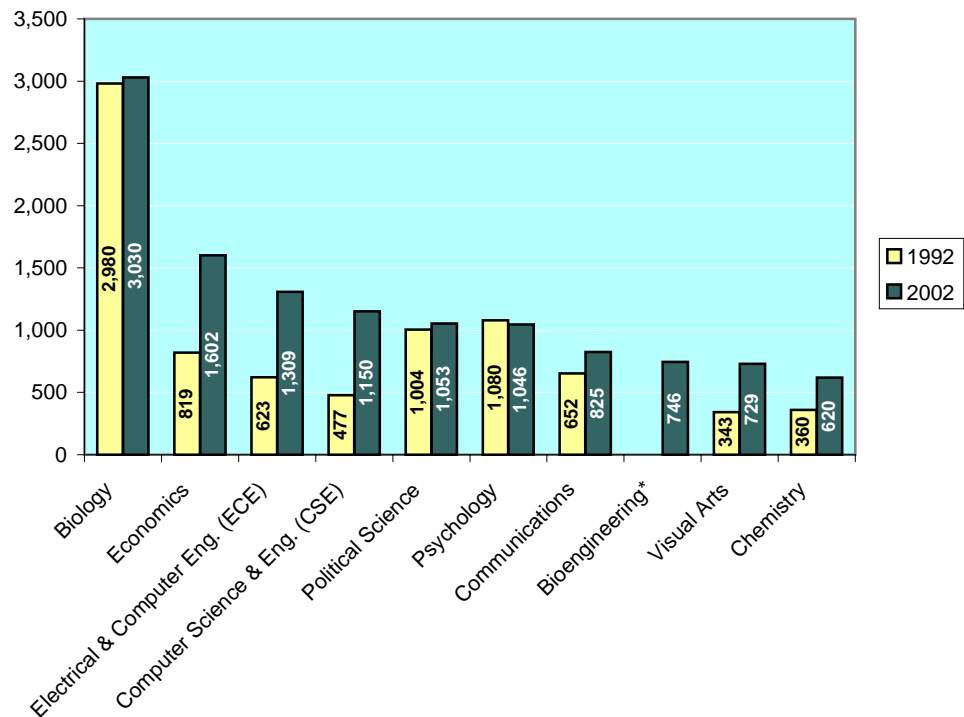
**Undergraduates by Major Department
Ten Most Populous Departments** Fall Quarter

| 1992 | | | 2002 | | |
|----------------------------------|---------------|---------------|----------------------------------|---------------|---------------|
| Major Department | n | % | Major Department | n | % |
| Biology | 2,980 | 20.2% | Biology | 3,030 | 15.9% |
| Applied Mechanics & Eng. (AMES) | 1,576 | 10.7% | Economics | 1,602 | 8.4% |
| Psychology | 1,080 | 7.3% | Electrical & Computer Eng. (ECE) | 1,309 | 6.9% |
| Political Science | 1,004 | 6.8% | Computer Science & Eng. (CSE) | 1,150 | 6.0% |
| Economics | 819 | 5.6% | Political Science | 1,053 | 5.5% |
| Communications | 652 | 4.4% | Psychology | 1,046 | 5.5% |
| Electrical & Computer Eng. (ECE) | 623 | 4.2% | Communications | 825 | 4.3% |
| Literature | 585 | 4.0% | Bioengineering* | 746 | 3.9% |
| Computer Science & Eng. (CSE) | 477 | 3.2% | Visual Arts | 729 | 3.8% |
| History | 395 | 2.7% | Chemistry | 620 | 3.2% |
| Other Departments | 2,746 | 18.6% | Other Departments | 4,613 | 24.2% |
| Undeclared Majors | 1,812 | 12.3% | Undeclared Majors | 2,365 | 12.4% |
| TOTAL | 14,749 | 100.0% | TOTAL | 19,088 | 100.0% |

Similar to 1992, the most popular undergraduate major at UCSD in 2002 is Biology. Economics has moved up three spots and is currently the second most popular major.

Figure 6.

Ten Most Populous Departments Fall Quarter



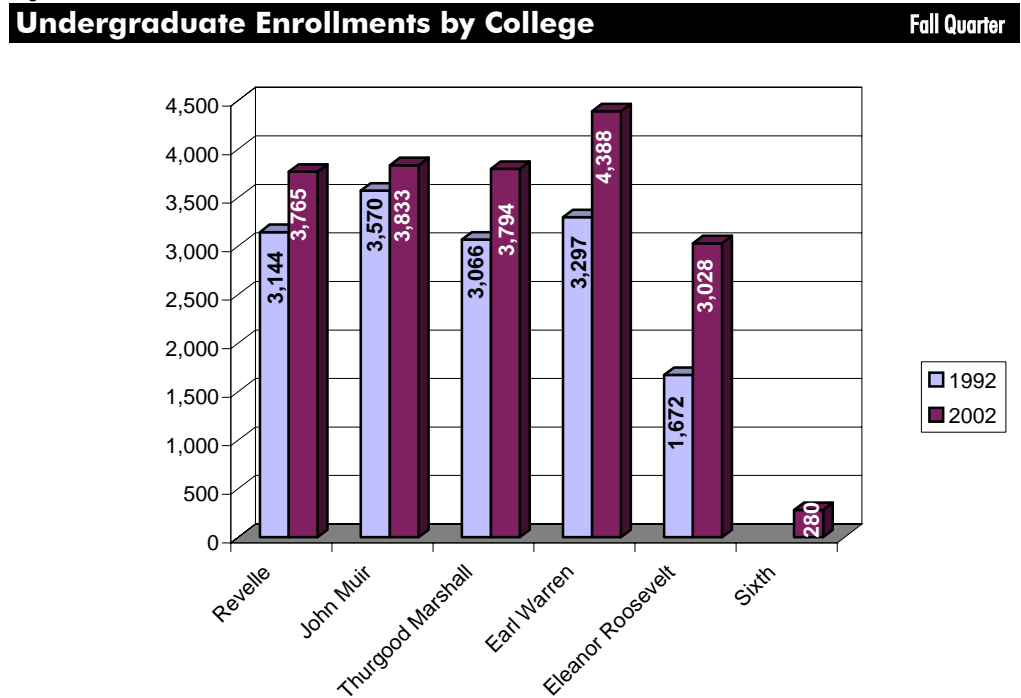
* No equivalent department in 1992.
Bioengineering established: Fall 1994

Table 7.

| Undergraduates by College | | | | | | | | Fall Quarter |
|----------------------------|---------------|---------------|---------------|---------------|---------------|---------------|---------------|--------------|
| College | 1992 | 1997 | 1998 | 1999 | 2000 | 2001 | 2002 | 10 Year Δ |
| • Revelle | 3,144 21% | 3,158 21% | 3,309 21% | 3,364 21% | 3,348 20% | 3,504 20% | 3,765 20% | +20% |
| • John Muir | 3,570 24% | 3,339 22% | 3,415 22% | 3,440 21% | 3,503 21% | 3,707 21% | 3,833 20% | +7% |
| • Thurgood Marshall | 3,066 21% | 3,113 21% | 3,203 20% | 3,326 20% | 3,342 20% | 3,560 20% | 3,794 20% | +24% |
| • Earl Warren | 3,297 22% | 3,566 24% | 3,768 24% | 3,816 24% | 3,856 23% | 4,046 23% | 4,388 23% | +33% |
| • Eleanor Roosevelt | 1,672 11% | 1,964 13% | 2,142 13% | 2,284 14% | 2,447 15% | 2,688 15% | 3,028 16% | +81% |
| • Sixth | NA NA | NA NA | NA NA | NA NA | NA NA | NA NA | 280 (1%) | NA |
| Total UG Enrollment | 14,749 | 15,140 | 15,837 | 16,230 | 16,496 | 17,505 | 19,088 | |

With more than 4,300 students, Earl Warren College is currently the largest of the six undergraduate colleges.

Figure 7.





**Academic
Profile:
Undergraduates**

Academic Profile: Total Undergraduate Population

Table 8.

Academic Profile Summary Fall Quarter

| Undergraduates | 1992 | 1997 | 1998 | 1999 | 2000 | 2001 | 2002 |
|----------------------|-------|-------|-------|-------|-------|-------|-------|
| • UCSD GPA | 2.97 | 2.98 | 2.98 | 2.98 | 3.00 | 3.02 | 3.02 |
| GPA \geq 3.5 | 13.9% | 16.2% | 16.4% | 16.7% | 17.0% | 18.2% | 18.3% |
| 3.0 \leq GPA < 3.5 | 36.1% | 34.6% | 34.2% | 34.0% | 35.3% | 35.5% | 35.3% |
| 2.5 \leq GPA < 3.0 | 32.9% | 32.1% | 31.8% | 31.4% | 31.2% | 30.8% | 30.5% |
| 2.0 \leq GPA < 2.5 | 14.5% | 14.5% | 14.7% | 14.9% | 13.9% | 13.1% | 13.4% |
| GPA < 2.0 | 2.6% | 2.6% | 2.9% | 3.0% | 2.6% | 2.4% | 2.4% |

The mean grade point average (GPA) for all undergraduates at UCSD is 3.02 (B); 18% have a GPA of 3.50 or higher.

Figure 8.

Proportion of Student Body within GPA Ranges Fall Quarter

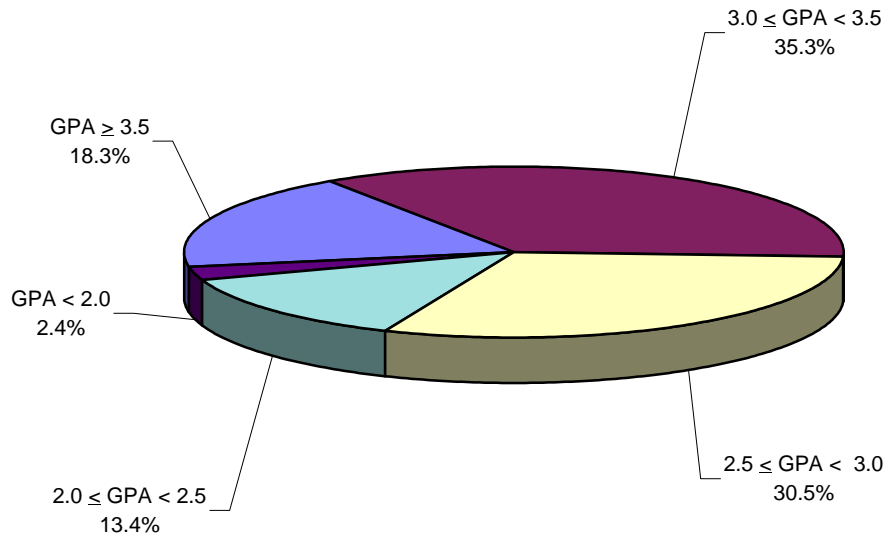


Table 9.

Academic Profile by Class Level **Fall Quarter**

| Undergraduates | 1992 | 1997 | 1998 | 1999 | 2000 | 2001 | 2002 |
|--------------------------|-------------|-------------|-------------|-------------|-------------|-------------|-------------|
| • Freshman* (N = 3,113) | | | | | | | |
| Freshman GPA | 2.90 | 2.83 | 2.87 | 2.92 | 2.91 | 2.96 | 2.94 |
| GPA \geq 3.5 | 18.5% | 17.7% | 17.7% | 20.9% | 20.4% | 23.6% | 21.4% |
| 3.0 \leq GPA < 3.5 | 31.2% | 28.0% | 31.1% | 32.7% | 32.2% | 32.3% | 31.9% |
| 2.5 \leq GPA < 3.0 | 26.6% | 26.3% | 26.3% | 22.9% | 23.6% | 23.4% | 25.4% |
| 2.0 \leq GPA < 2.5 | 16.3% | 17.6% | 15.6% | 15.3% | 15.0% | 13.2% | 13.9% |
| GPA < 2.0 | 7.5% | 10.4% | 9.4% | 8.2% | 8.8% | 7.4% | 7.5% |
| • Sophomore (N = 3,320) | | | | | | | |
| Sophomore GPA | 2.98 | 2.96 | 2.95 | 2.98 | 2.99 | 3.02 | 3.01 |
| GPA \geq 3.5 | 14.7% | 14.6% | 14.7% | 17.0% | 16.7% | 18.8% | 17.0% |
| 3.0 \leq GPA < 3.5 | 36.9% | 34.1% | 33.1% | 32.9% | 34.6% | 35.8% | 35.8% |
| 2.5 \leq GPA < 3.0 | 32.1% | 33.5% | 33.7% | 32.2% | 32.3% | 29.4% | 32.0% |
| 2.0 \leq GPA < 2.5 | 13.6% | 15.4% | 15.3% | 14.9% | 14.2% | 13.0% | 13.3% |
| GPA < 2.0 | 2.7% | 2.4% | 3.2% | 3.1% | 2.3% | 2.9% | 2.0% |
| • Junior (N = 3,692) | | | | | | | |
| Junior GPA | 2.95 | 2.99 | 3.01 | 2.99 | 3.00 | 3.03 | 3.02 |
| GPA \geq 3.5 | 13.0% | 16.0% | 17.2% | 16.3% | 16.9% | 18.4% | 18.9% |
| 3.0 \leq GPA < 3.5 | 36.0% | 35.0% | 35.7% | 35.9% | 36.1% | 35.9% | 36.3% |
| 2.5 \leq GPA < 3.0 | 33.9% | 32.5% | 30.9% | 31.6% | 31.6% | 31.2% | 29.4% |
| 2.0 \leq GPA < 2.5 | 14.3% | 13.7% | 13.5% | 13.3% | 12.8% | 12.5% | 12.5% |
| GPA < 2.0 | 3.0% | 2.7% | 2.8% | 2.9% | 2.7% | 2.1% | 2.8% |
| • Senior (N = 6,067) | | | | | | | |
| Senior GPA | 2.99 | 3.02 | 3.02 | 3.01 | 3.03 | 3.03 | 3.04 |
| GPA \geq 3.5 | 14.5% | 17.2% | 17.4% | 17.8% | 17.9% | 18.3% | 19.2% |
| 3.0 \leq GPA < 3.5 | 37.2% | 36.3% | 35.9% | 35.2% | 36.1% | 36.4% | 35.8% |
| 2.5 \leq GPA < 3.0 | 32.9% | 31.8% | 31.5% | 30.7% | 30.7% | 31.2% | 30.3% |
| 2.0 \leq GPA < 2.5 | 13.8% | 13.1% | 13.4% | 14.4% | 13.7% | 12.5% | 13.2% |
| GPA < 2.0 | 1.6% | 1.6% | 1.8% | 1.9% | 1.7% | 1.6% | 1.5% |
| Undergraduate GPA | 2.97 | 2.98 | 2.98 | 2.98 | 3.00 | 3.02 | 3.02 |

There is a positive relationship between student level and grade point average; as students advance in standing their grade point average generally increases.

* Note: Freshman GPA data reflect grades for Winter quarter of first year enrolled.

Table 10.

Academic Profile by Major Field of Study **Fall Quarter**

| Undergraduates | 1992 | 1997 | 1998 | 1999 | 2000 | 2001 | 2002 |
|------------------------------|-------------|-------------|-------------|-------------|-------------|-------------|-------------|
| • Arts (N = 803) | | | | | | | |
| Arts GPA | 3.06 | 3.05 | 3.08 | 3.06 | 3.10 | 3.12 | 3.17 |
| GPA \geq 3.5 | 16.1% | 16.4% | 18.7% | 18.5% | 18.7% | 20.9% | 24.3% |
| 3.0 \leq GPA < 3.5 | 44.8% | 45.1% | 43.2% | 39.8% | 45.3% | 44.5% | 45.2% |
| 2.5 \leq GPA < 3.0 | 27.5% | 24.9% | 26.3% | 29.8% | 25.8% | 24.6% | 22.3% |
| 2.0 \leq GPA < 2.5 | 10.0% | 12.0% | 10.5% | 9.8% | 8.7% | 9.1% | 7.6% |
| GPA < 2.0 | 1.6% | 1.6% | 1.4% | 2.1% | 1.6% | 1.0% | 0.6% |
| • Engineering (N = 3,099) | | | | | | | |
| Engineering GPA | 2.96 | 3.00 | 2.97 | 2.97 | 2.95 | 2.99 | 2.97 |
| GPA \geq 3.5 | 13.8% | 17.7% | 15.7% | 16.1% | 15.6% | 16.9% | 16.7% |
| 3.0 \leq GPA < 3.5 | 34.8% | 33.2% | 32.5% | 31.8% | 31.4% | 32.1% | 31.0% |
| 2.5 \leq GPA < 3.0 | 34.1% | 33.0% | 34.3% | 34.4% | 34.6% | 34.5% | 34.1% |
| 2.0 \leq GPA < 2.5 | 14.3% | 13.7% | 14.8% | 15.1% | 15.7% | 14.5% | 16.0% |
| GPA < 2.0 | 2.9% | 2.4% | 2.7% | 2.5% | 2.8% | 2.0% | 2.1% |
| • Humanities (N = 607) | | | | | | | |
| Humanities GPA | 3.07 | 3.10 | 3.14 | 3.10 | 3.09 | 3.14 | 3.13 |
| GPA \geq 3.5 | 17.3% | 20.9% | 25.0% | 23.7% | 22.1% | 34.9% | 23.9% |
| 3.0 \leq GPA < 3.5 | 42.1% | 42.0% | 40.3% | 37.8% | 38.0% | 39.9% | 41.0% |
| 2.5 \leq GPA < 3.0 | 29.3% | 24.6% | 22.7% | 25.1% | 28.7% | 27.0% | 24.5% |
| 2.0 \leq GPA < 2.5 | 9.5% | 11.1% | 10.2% | 10.8% | 8.8% | 6.6% | 8.6% |
| GPA < 2.0 | 1.8% | 1.4% | 1.8% | 2.6% | 2.5% | 1.6% | 2.0% |
| • Science/Math (N = 3,234) | | | | | | | |
| Science/Math GPA | 2.94 | 2.99 | 2.98 | 2.98 | 2.99 | 3.02 | 3.02 |
| GPA \geq 3.5 | 14.5% | 17.1% | 18.5% | 18.5% | 18.8% | 20.0% | 19.7% |
| 3.0 \leq GPA < 3.5 | 32.8% | 32.5% | 31.0% | 30.8% | 31.6% | 32.9% | 33.5% |
| 2.5 \leq GPA < 3.0 | 32.8% | 32.9% | 32.3% | 32.0% | 31.6% | 30.7% | 30.3% |
| 2.0 \leq GPA < 2.5 | 17.0% | 15.0% | 15.3% | 15.6% | 15.2% | 13.8% | 13.8% |
| GPA < 2.0 | 2.9% | 2.5% | 2.9% | 3.1% | 2.8% | 2.7% | 2.6% |
| • Social Science (N = 4,933) | | | | | | | |
| Social Science GPA | 2.95 | 2.95 | 2.97 | 2.97 | 3.01 | 3.00 | 3.02 |
| GPA \geq 3.5 | 12.0% | 12.8% | 13.4% | 14.3% | 15.5% | 16.4% | 17.2% |
| 3.0 \leq GPA < 3.5 | 36.9% | 36.4% | 36.9% | 37.4% | 38.5% | 37.4% | 37.6% |
| 2.5 \leq GPA < 3.0 | 34.2% | 33.1% | 31.8% | 30.4% | 30.6% | 30.5% | 29.9% |
| 2.0 \leq GPA < 2.5 | 14.4% | 14.8% | 14.9% | 14.9% | 13.2% | 13.3% | 12.6% |
| GPA < 2.0 | 2.5% | 2.9% | 3.0% | 2.9% | 2.2% | 2.3% | 2.6% |
| Undergraduate GPA | 2.97 | 2.98 | 2.98 | 2.98 | 3.00 | 3.02 | 3.02 |

Grade point averages vary by major field of study with the highest average GPAs generally associated with Arts and Humanities majors.



**New
Students**

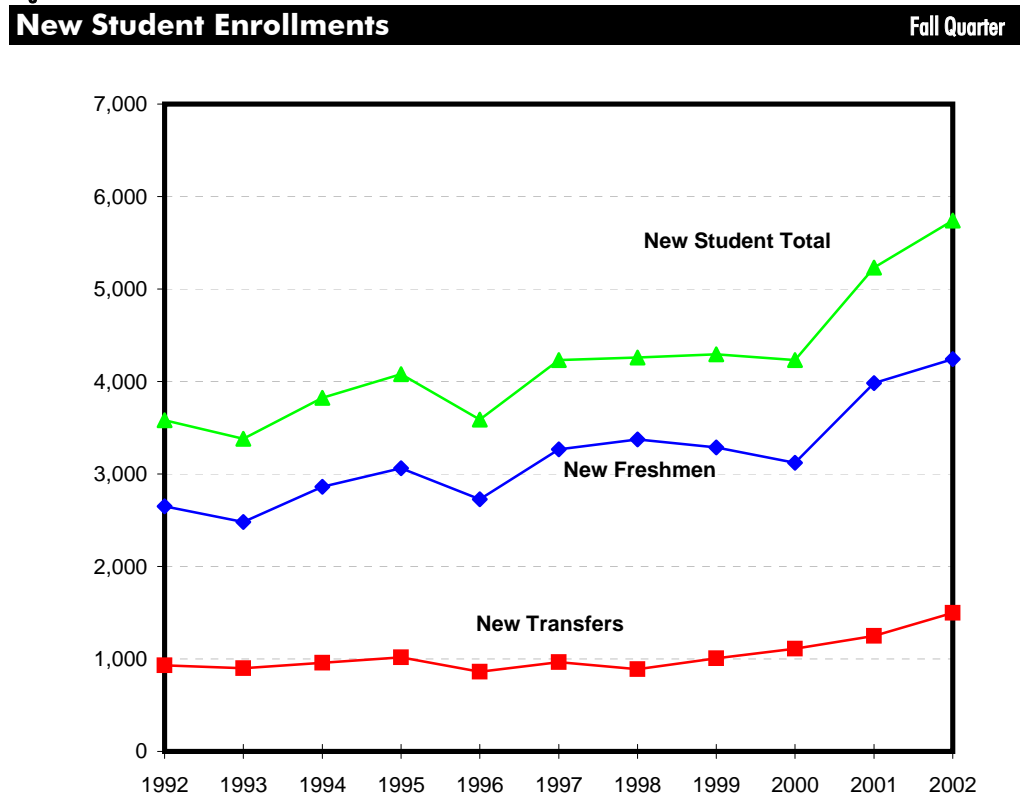
■ New Students: The Past Decade

New student enrollments have increased from 3,580 in 1992 to 5,741 in 2002, representing an overall increase of 60%. Of the new student enrollment, just under three-quarters (74%) are first-time freshmen.

Table 11.

| New Student Enrollments | | | | | | | | Fall Quarter |
|--------------------------|--------------|--------------|--------------|--------------|--------------|--------------|--------------|------------------|
| New Students | 1992 | 1997 | 1998 | 1999 | 2000 | 2001 | 2002 | 10 Year Δ |
| • First-Time Freshmen | 2,650 74% | 3,268 77% | 3,373 79% | 3,286 77% | 3,122 74% | 3,981 76% | 4,243 74% | +60% |
| • New Transfers | 930 26% | 965 23% | 888 21% | 1,007 23% | 1,111 26% | 1,250 24% | 1,498 26% | +61% |
| New Student Total | 3,580 | 4,233 | 4,261 | 4,293 | 4,233 | 5,231 | 5,741 | +60% |

Figure 9.





**First-Time
Freshmen**

■ First-Time Freshmen

Over forty-one thousand high school students applied for admission to UCSD for Fall of 2002. Of these students, 41% were admitted to UCSD. A total of 4,243 (25%) of the admitted students registered for enrollment.

Table 12.

Applicants, Admits & Registered Fall Quarter

| First-Time Freshmen | 1992 | 1997 | 1998 | 1999 | 2000 | 2001 | 2002 | 10 Year Δ |
|---------------------|--------|--------|--------|--------|--------|--------|--------|-----------|
| • Applicants | 19,117 | 25,102 | 28,091 | 32,547 | 35,691 | 38,187 | 41,354 | +116% |
| • Admits | 11,338 | 13,303 | 13,586 | 13,251 | 13,718 | 16,493 | 17,092 | +51% |
| Admit/App. Rate | 59% | 53% | 48% | 41% | 38% | 43% | 41% | |
| • Registered | 2,650 | 3,268 | 3,373 | 3,286 | 3,122 | 3,981 | 4,243 | +60% |
| Reg./Admit Rate | 23% | 25% | 25% | 25% | 23% | 24% | 25% | |

Figure 10.

Applicants, Admits & Registered Fall Quarter

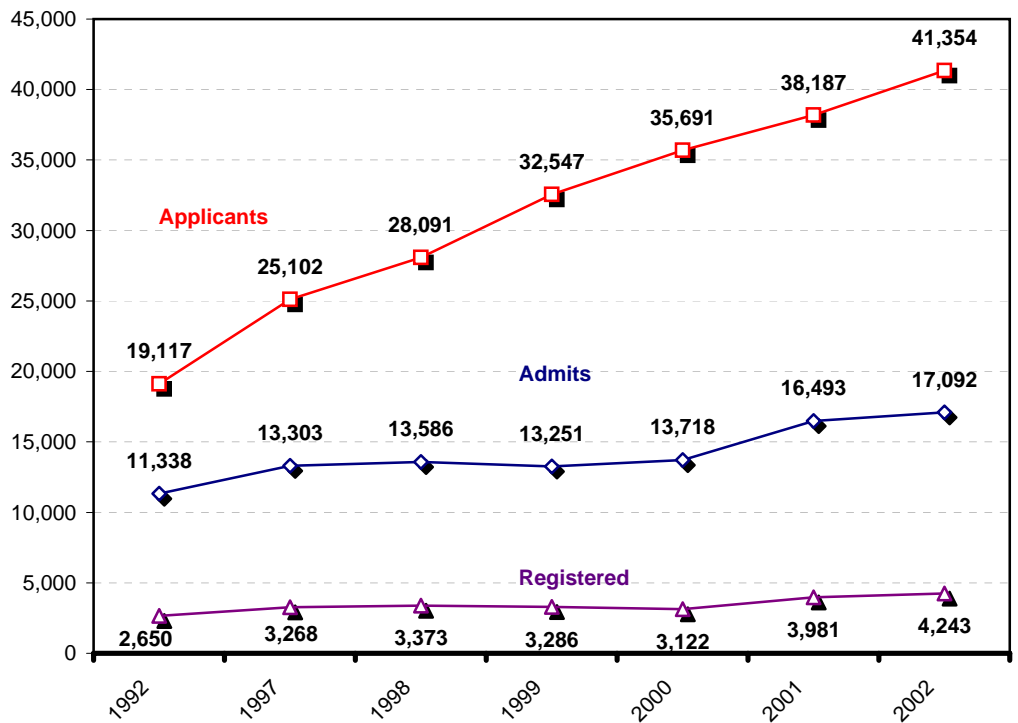


Table 13.

First-Time Freshmen by Gender Fall Quarter

| Gender | 1992 | 1997 | 1998 | 1999 | 2000 | 2001 | 2002 | 10 Year Δ |
|--------------|--------------|--------------|--------------|--------------|--------------|--------------|--------------|-------------|
| • Male | 1,309 49% | 1,491 46% | 1,496 44% | 1,493 45% | 1,440 46% | 1,829 46% | 1,903 45% | +45% |
| • Female | 1,341 51% | 1,777 54% | 1,877 56% | 1,793 55% | 1,682 54% | 2,152 54% | 2,340 55% | +74% |
| Total | 2,650 | 3,268 | 3,373 | 3,286 | 3,122 | 3,981 | 4,243 | +60% |

With over 2,300 new female freshmen, women continue to represent the larger group of first-time freshmen at UCSD.

Figure 11.

First-Time Freshmen by Gender Fall Quarter

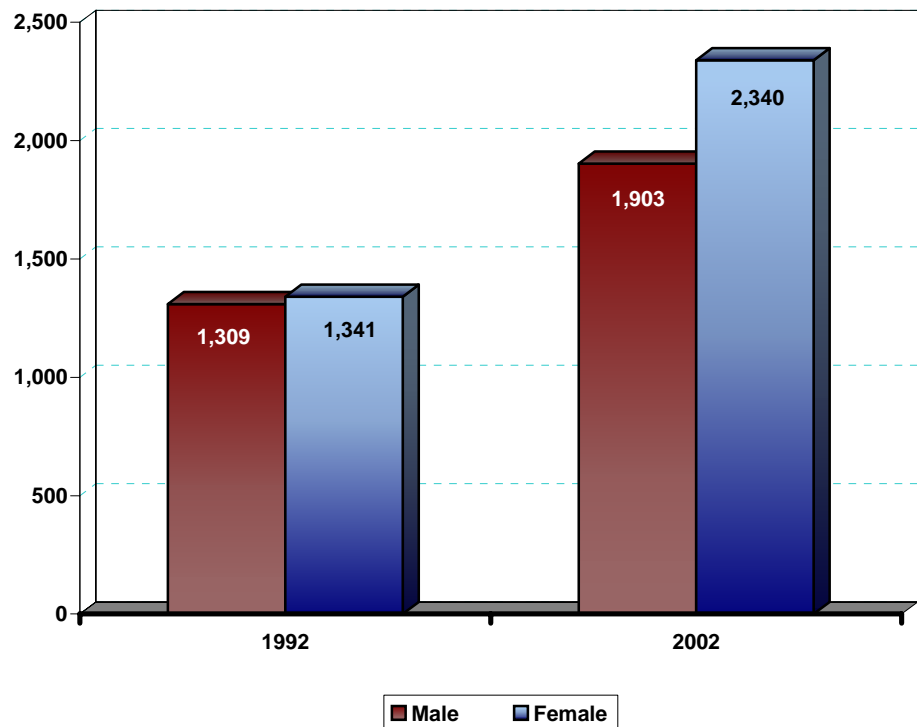


Table 14.

First-Time Freshmen by Ethnicity Fall Quarter

| Ethnicity | 1992 | 1997 | 1998 | 1999 | 2000 | 2001 | 2002 | 10 Year Δ |
|--------------------|--------------|--------------|--------------|--------------|--------------|--------------|--------------|-------------|
| • African-American | 59 2% | 64 2% | 52 2% | 33 1% | 28 1% | 33 1% | 48 1% | -19% |
| • Mexican-American | 190 7% | 272 8% | 202 6% | 227 7% | 243 8% | 254 6% | 358 8% | +88% |
| • Native-American | 16 1% | 25 1% | 19 1% | 12 0% | 13 0% | 9 0% | 20 0% | +25% |
| • Asian | 653 25% | 959 29% | 963 29% | 1,101 34% | 986 32% | 1,452 36% | 1,502 35% | +130% |
| • Caucasian | 1,278 48% | 1,372 42% | 1,253 37% | 1,328 40% | 1,210 39% | 1,472 37% | 1,508 36% | +18% |
| • Filipino | 121 5% | 165 5% | 181 5% | 140 4% | 161 5% | 202 5% | 199 5% | +64% |
| • Latino | 61 2% | 60 2% | 74 2% | 60 2% | 67 2% | 68 2% | 98 2% | +61% |
| • Other/Missing | 272 10% | 351 11% | 629 19% | 385 12% | 414 13% | 491 12% | 510 12% | +88% |
| Total | 2,650 | 3,268 | 3,373 | 3,286 | 3,122 | 3,981 | 4,243 | +60% |

Since 1992, the proportion of African-American, Native American and Caucasian students has decreased. At the same time, the proportion of Asian and "Other" students has increased.

Figure 12.

First-Time Freshmen by Ethnicity Fall Quarter

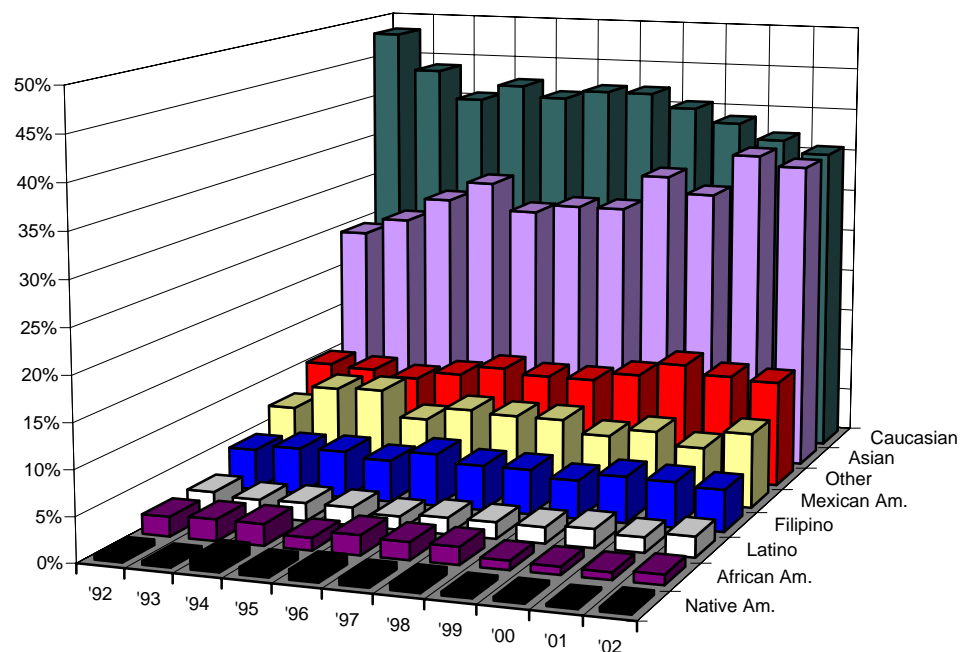


Table 15.

First-Time Freshmen by Major Field of Study Fall Quarter

| Major Field of Study | 1992 | 1997 | 1998 | 1999 | 2000 | 2001 | 2002 | 10 Year Δ |
|----------------------------------|--------------|--------------|--------------|--------------|--------------|--------------|--------------|-------------|
| • Arts | 54 2% | 62 2% | 85 3% | 65 2% | 86 3% | 115 3% | 143 3% | +165% |
| • Engineering | 573 22% | 636 19% | 595 18% | 660 20% | 713 23% | 1,035 26% | 900 21% | +57% |
| • Humanities | 75 3% | 98 3% | 100 3% | 90 3% | 76 2% | 102 3% | 112 3% | +49% |
| • Science/Math | 617 23% | 781 24% | 861 26% | 840 26% | 752 24% | 847 21% | 932 22% | +51% |
| • Social Science | 402 15% | 506 15% | 640 19% | 630 19% | 564 18% | 697 18% | 713 17% | +77% |
| • Undeclared/Missing/ Special | 929 35% | 1,185 36% | 1,092 32% | 1,001 30% | 931 30% | 1,185 30% | 1,443 34% | +55% |
| Total | 2,650 | 3,268 | 3,373 | 3,286 | 3,122 | 3,981 | 4,243 | +60% |

The most popular declared field of study in 2002 was Science/Math, followed closely by Engineering. Approximately, thirty-four percent of all new freshmen had not declared a major at the time of admission.

Figure 13.

First-Time Freshmen by Major Field of Study Fall Quarter

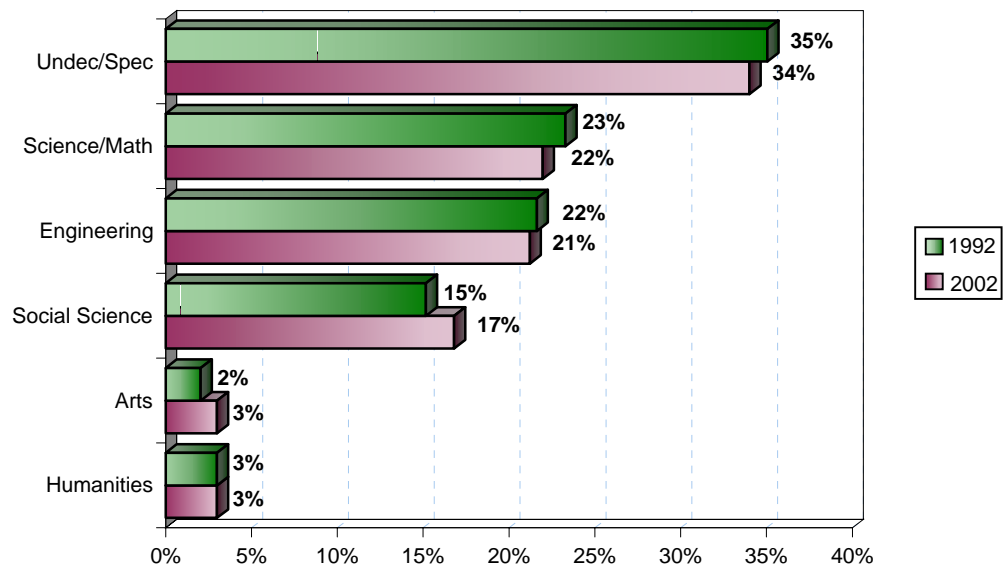


Table 16.

**First-Time Freshmen
by Major Department at Time of Admission** **Fall Quarter**

| 1992 | | | 2002 | | |
|----------------------------------|--------------|---------------|----------------------------------|--------------|---------------|
| Major Department | n | % | Major Department | n | % |
| Biology | 453 | 17.1% | Biology | 622 | 14.7% |
| Applied Mechanics & Eng. (AMES) | 411 | 15.5% | Computer Science & Eng. (CSE) | 233 | 5.5% |
| Psychology | 111 | 4.2% | Bioengineering | 213 | 5.0% |
| Electrical & Computer Eng. (ECE) | 89 | 3.4% | Mechanical & Aerospace Eng. | 206 | 4.9% |
| Political Science | 86 | 3.2% | Economics | 183 | 4.3% |
| Economics | 85 | 3.2% | Psychology | 176 | 4.1% |
| Computer Science & Eng. (CSE) | 73 | 2.8% | Chemistry & Biochemistry | 170 | 4.0% |
| Chemistry | 65 | 2.5% | Electrical & Computer Eng. (ECE) | 169 | 4.0% |
| Communications | 61 | 2.3% | Communications | 123 | 2.9% |
| Physics | 58 | 2.2% | Political Science | 115 | 2.7% |
| Literature | 47 | 1.8% | Mathematics | 105 | 2.5% |
| Mathematics | 41 | 1.5% | Visual Arts | 90 | 2.1% |
| Visual Arts | 26 | 1.0% | Literature | 70 | 1.6% |
| Sociology | 22 | 0.8% | Structural Engineering | 59 | 1.4% |
| History | 21 | 0.8% | History | 31 | 0.7% |
| Music | 19 | 0.7% | Physics | 30 | 0.7% |
| Theatre | 9 | 0.3% | Music | 28 | 0.7% |
| Anthropology | 7 | 0.3% | Theatre | 25 | 0.6% |
| Cognitive Science | 7 | 0.3% | Sociology | 24 | 0.6% |
| Ethnic Studies | 7 | 0.3% | Anthropology | 20 | 0.5% |
| Subtotal | 1,698 | 64.0% | Subtotal | 2,692 | 63.5% |
| Other Majors | 23 | 0.9% | Other Majors | 108 | 2.5% |
| Undeclared Majors | 929 | 35.1% | Undeclared Majors | 1,443 | 34.0% |
| TOTAL | 2,650 | 100.0% | TOTAL | 4,243 | 100.0% |

Similar to 1992, Biology was the most popular declared major among new freshmen in 2002; approximately 15% of all new freshmen report majoring in Biology.

Table 17.

| First-Time Freshmen by College | | | | | | | | Fall Quarter |
|---------------------------------------|--------------|--------------|--------------|--------------|--------------|--------------|--------------|---------------------|
| College | 1992 | 1997 | 1998 | 1999 | 2000 | 2001 | 2002 | 10 Year Δ |
| • Revelle | 628 24% | 771 24% | 703 21% | 795 24% | 717 23% | 848 21% | 839 20% | +34% |
| • John Muir | 587 22% | 703 22% | 734 22% | 657 20% | 586 19% | 811 20% | 763 18% | +30% |
| • Thurgood Marshall | 530 20% | 696 21% | 627 19% | 684 21% | 598 19% | 803 20% | 748 18% | +41% |
| • Earl Warren | 562 21% | 560 17% | 699 21% | 570 17% | 652 21% | 776 19% | 809 19% | +44% |
| • Eleanor Roosevelt | 343 13% | 538 16% | 610 18% | 580 18% | 569 18% | 743 19% | 804 19% | +134% |
| • Sixth | NA NA | NA NA | NA NA | NA NA | NA NA | NA NA | 280 (7%) | NA |
| Total | 2,650 | 3,268 | 3,373 | 3,286 | 3,122 | 3,981 | 4,243 | +60% |

The largest number of first-time freshmen come to UCSD from the Los Angeles area, followed by the San Francisco region.

Table 18.

| First-Time Freshmen by Home Location | | | | | | | | Fall Quarter |
|---|--------------|--------------|--------------|--------------|--------------|--------------|--------------|---------------------|
| Home Location | 1992 | 1997 | 1998 | 1999 | 2000 | 2001 | 2002 | 10 Year Δ |
| • San Diego | 621 23% | 758 23% | 802 24% | 594 18% | 538 17% | 699 18% | 754 18% | +21% |
| • Los Angeles | 1,108 42% | 1,295 40% | 1,315 39% | 1,398 42% | 1,416 45% | 1,641 41% | 1,852 44% | +67% |
| • San Francisco | 482 18% | 620 19% | 625 19% | 650 20% | 587 19% | 879 22% | 923 22% | +91% |
| • Other CA | 278 10% | 459 14% | 464 14% | 492 15% | 445 14% | 543 14% | 577 14% | +108% |
| • Out-of-State | 150 6% | 108 3% | 148 4% | 125 4% | 97 3% | 131 3% | 66 2% | -56% |
| • Foreign | 11 0% | 28 1% | 19 1% | 27 1% | 39 1% | 88 2% | 71 2% | +545% |
| Total | 2,650 | 3,268 | 3,373 | 3,286 | 3,122 | 3,981 | 4,243 | +60% |

Table 19.

First-Time Freshmen by 1st Generation College Status Fall Quarter

| College Status | 1992 | 1997 | 1998 | 1999 | 2000 | 2001 | 2002 | 10 Year Δ |
|------------------------|--------------|--------------|--------------|--------------|--------------|--------------|--------------|-------------|
| • First Generation | 409 15% | 641 20% | 623 18% | 773 24% | 739 24% | 858 22% | 876 21% | +114% |
| • Not First Generation | 2,241 85% | 2,627 80% | 2,750 82% | 2,513 76% | 2,383 76% | 3,123 78% | 3,367 79% | +50% |
| Total | 2,650 | 3,268 | 3,373 | 3,286 | 3,122 | 3,981 | 4,243 | +60% |

The vast majority of new freshmen have at least one parent who has graduated from a two-year junior college or four-year college/university.

Table 20.

First-Time Freshmen by Income Group Fall Quarter

| Income | 1992 | 1997* | 1998* | 1999* | 2000 | 2001 | 2002 | 10 Year Δ |
|--|-----------|--------------|--------------|--------------|--------------|--------------|--------------|-----------|
| • High (≥\$98,401) | NA NA | 1,020 31% | 962 29% | 1,007 31% | 704 23% | 1,114 28% | 1,054 25% | NA |
| • Medium High (\$65,601 - \$98,400) | NA NA | 616 19% | 583 17% | 518 16% | 429 14% | 584 15% | 560 13% | NA |
| • Medium Low (\$32,801 - \$65,600) | NA NA | 685 21% | 610 18% | 597 18% | 698 22% | 842 21% | 891 21% | NA |
| • Low (≤\$32,800) | NA NA | 585 18% | 560 17% | 601 18% | 629 20% | 659 17% | 932 22% | NA |
| • Missing | NA NA | 362 11% | 658 20% | 563 17% | 662 21% | 782 20% | 806 19% | NA |
| Total | NA | 3,268 | 3,373 | 3,286 | 3,122 | 3,981 | 4,243 | NA |

* 1997-1999 Income Categories:
 High = Income ≥ \$87,001
 Medium High = \$58,001-\$87,000
 Medium Low = \$29,001-\$58,000
 Low = Income ≤ \$29,000


Table 21.

Major* Feeder High Schools for First-time Freshmen Fall Quarter

| High School | City | Number from H.S. Registered at UCSD in Fall 2002 | Percent of UCSD's Total Freshman Enrollment | Average H.S. GPA of Registered Freshmen | Average SAT I of Registered Freshmen | Average SAT II of Registered Freshmen | High School Quintile Rank |
|--|---------------|--|---|---|--------------------------------------|---------------------------------------|---------------------------|
| Arcadia High School | Arcadia | 50 | 1.2% | 3.85 | 1320 | 1339 | First |
| Mount Carmel High School | San Diego | 40 | 0.9% | 3.97 | 1281 | 1293 | First |
| Mission San Jose High School | Fremont | 38 | 0.9% | 3.85 | 1321 | 1387 | First |
| Diamond Bar High School | Diamond Bar | 36 | 0.8% | 3.93 | 1293 | 1292 | First |
| Monta Vista High School | Cupertino | 35 | 0.8% | 3.86 | 1378 | 1437 | First |
| Lynbrook High School | San Jose | 33 | 0.8% | 3.89 | 1403 | 1412 | First |
| Henry M. Gunn Senior High School | Palo Alto | 32 | 0.8% | 3.82 | 1316 | 1335 | First |
| Lowell High School | San Francisco | 31 | 0.7% | 3.68 | 1313 | 1341 | First |
| Van Nuys High School | Van Nuys | 28 | 0.7% | 3.71 | 1283 | 1301 | Second |
| University High School | Irvine | 27 | 0.6% | 3.75 | 1363 | 1387 | First |
| Leland High School | San Jose | 26 | 0.6% | 3.96 | 1353 | 1389 | First |
| Rancho Bernardo High School | San Diego | 26 | 0.6% | 3.93 | 1255 | 1314 | First |
| Torrey Pines High School | San Diego | 26 | 0.6% | 3.96 | 1322 | 1317 | First |
| Troy High School | Fullerton | 26 | 0.6% | 3.77 | 1315 | 1321 | First |
| Mira Mesa High School | San Diego | 25 | 0.6% | 4.05 | 1230 | 1237 | Second |
| Bonita Vista High School | Chula Vista | 24 | 0.6% | 4.01 | 1150 | 1166 | Second |
| Esperanza High School | Anaheim | 24 | 0.6% | 4.01 | 1292 | 1283 | First |
| Ruben S Ayala Senior High School | Chino | 24 | 0.6% | 4.12 | 1223 | 1225 | Second |
| University City High School | San Diego | 24 | 0.6% | 3.99 | 1200 | 1235 | Second |
| Cerritos High School | Cerritos | 23 | 0.5% | 3.93 | 1273 | 1318 | First |
| Scripps Ranch High School | San Diego | 22 | 0.5% | 4.01 | 1212 | 1189 | First |
| Aliso Niguel High School | Aliso Viejo | 21 | 0.5% | 3.65 | 1140 | 1140 | First |
| Davis Senior High School | Davis | 21 | 0.5% | 4.00 | 1335 | 1369 | First |
| Palos Verdes Penn. High School | Rolling Hills | 21 | 0.5% | 3.76 | 1344 | 1352 | First |
| Valhalla High School | El Cajon | 21 | 0.5% | 4.07 | 1210 | 1186 | First |
| Walnut High School | Walnut | 21 | 0.5% | 3.91 | 1286 | 1315 | First |
| Dana Hills High School | Dana Point | 20 | 0.5% | 4.04 | 1312 | 1315 | First |
| Northgate High School | Walnut Creek | 20 | 0.5% | 3.89 | 1322 | 1409 | First |
| Saint Ignatius College | San Francisco | 19 | 0.4% | 3.90 | 1276 | 1316 | First |
| San Marino High School | San Marino | 19 | 0.4% | 3.87 | 1352 | 1405 | First |
| Crescenta Valley High School | La Crescenta | 18 | 0.4% | 3.73 | 1303 | 1301 | First |
| North High School | Torrance | 18 | 0.4% | 3.86 | 1212 | 1222 | Second |
| San Gabriel High School | San Gabriel | 18 | 0.4% | 3.96 | 1164 | 1190 | Fifth |
| San Marcos High School | San Marcos | 18 | 0.4% | 3.99 | 1244 | 1233 | Third |
| Sunny Hills High School | Fullerton | 18 | 0.4% | 3.84 | 1271 | 1309 | First |
| Subtotal (Number of High Schools=35) | | 893 | 21.0% | | | | |
| Other High Schools (Number of High Schools=812) | | 3,350 | 79.0% | | | | |
| Total (Number of High Schools=847) | | 4,243 | 100.0% | 3.94 | 1239 | 1252 | |

Arcadia High School in the Los Angeles area and Mount Carmel in the San Diego area top the list of major feeder schools for the Fall 2002 freshman cohort.

* Nineteen or more students



**High School
Grades and
SAT Scores**

Academic Preparation: A Decade of Change

The 2002 freshman cohort showed a slight decrease with regard to average SAT scores.

Table 22.

Freshman Cohort by HS GPA and SAT Score Averages Fall Quarter

| First-Time Freshmen | 1992 | 1997 | 1998 | 1999 | 2000 | 2001 | 2002 |
|---------------------------|------|------|------|------|------|------|------|
| • HS GPA* | 3.84 | 3.90 | 3.89 | 3.98 | 3.99 | 3.95 | 3.94 |
| • SAT I (Verbal & Math) | 1142 | 1233 | 1241 | 1256 | 1259 | 1264 | 1239 |
| • SAT II (English & Math) | NA | 1198 | 1198 | 1241 | 1255 | 1262 | 1252 |

* GPAs may exceed 4.0 with credit given for honors courses.

Table 23.

Freshman Cohort by Academic Indicator Ranges Fall Quarter

| High School GPA Range | Percentage in Range | | SAT I Composite Score Range | Percentage in Range | |
|-----------------------|---------------------|-------------|-----------------------------|---------------------|-------------|
| | 1992 | 2002 | | 1992 | 2002 |
| • 4.0 - High | 37% | 48% | • 1500 - 1600 | <1% | 2% |
| • 3.90 - 3.99 | 10% | 12% | • 1300 - 1499 | 14% | 35% |
| • 3.60 - 3.89 | 31% | 30% | • 1200 - 1299 | 21% | 29% |
| • 3.30 - 3.59 | 17% | 10% | • 1000 - 1199 | 51% | 28% |
| • Low - 3.29 | 5% | 1% | • Low - 999 | 14% | 6% |
| Total | 100% | 100% | Total | 100% | 100% |

| Number of Honors Courses: 10th & 11th Grade | Percentage in Range | | Number of College Preparatory (A-F) Courses | Percentage in Range | |
|---|---------------------|-------------|---|---------------------|-------------|
| | 1992 | 2002 | | 1992 | 2002 |
| • More than 8 | NA | 6% | • More than 50 | 9% | 15% |
| • 7 - 8 | NA | 8% | • 46 - 50 | 18% | 26% |
| • 5 - 6 | NA | 18% | • 41 - 45 | 38% | 38% |
| • 1 - 4 | NA | 50% | • 36 - 40 | 31% | 19% |
| • 0 | NA | 18% | • 30 - 35 | 4% | 2% |
| Total | 100% | 100% | Total | 100% | 100% |

Figure 14.

Academic Preparation: 1992-2002 Comparison Fall Quarter

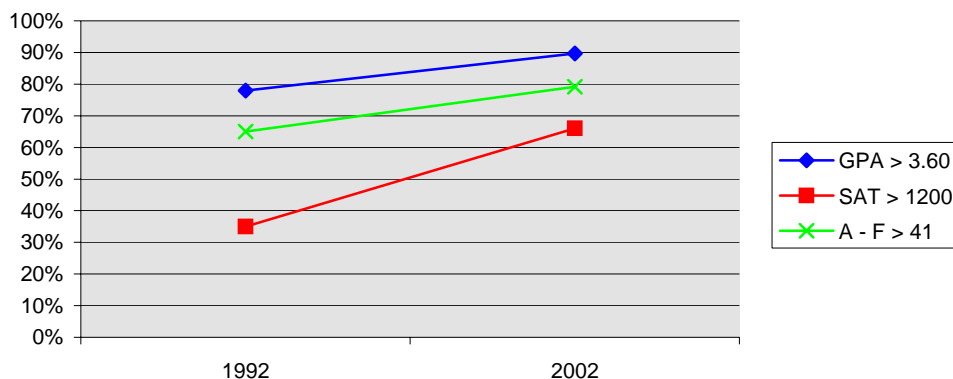


Table 24.

High School GPA¹ by Gender, Ethnicity, Major Field of Study, Home Location, 1st Generation College Status & Income Fall Quarter

| First-Time Freshmen GPA | 1992 Average | 1997 ² Average | 1998 ² Average | 1999 ² Average | 2000 Average | 2001 Average | 2002 Average |
|-----------------------------------|--------------|---------------------------|---------------------------|---------------------------|--------------|--------------|--------------|
| • Gender | | | | | | | |
| Male | 3.83 | 3.87 | 3.86 | 3.94 | 3.97 | 3.93 | 3.91 |
| Female | 3.85 | 3.92 | 3.90 | 4.00 | 4.00 | 3.97 | 3.95 |
| • Ethnicity | | | | | | | |
| African-American | 3.48 | 3.68 | 3.81 | 3.93 | 4.01 | 3.94 | 3.76 |
| Mexican-American | 3.59 | 3.73 | 3.89 | 3.96 | 3.98 | 3.95 | 3.87 |
| Native-American | 3.50 | 3.63 | 3.92 | 3.95 | 3.96 | 3.93 | 4.02 |
| Asian | 3.87 | 3.88 | 3.84 | 3.94 | 3.92 | 3.91 | 3.89 |
| Caucasian | 3.87 | 3.95 | 3.91 | 4.01 | 4.03 | 4.00 | 3.99 |
| Filipino | 3.95 | 4.02 | 3.93 | 4.07 | 4.08 | 3.97 | 4.02 |
| Latino | 3.84 | 3.90 | 3.94 | 3.94 | 4.04 | 3.94 | 3.87 |
| • Major Field of Study | | | | | | | |
| Arts | 3.68 | 3.78 | 3.78 | 3.96 | 3.94 | 3.93 | 3.90 |
| Engineering | 3.89 | 3.89 | 3.93 | 4.00 | 4.03 | 3.99 | 3.99 |
| Humanities | 3.76 | 3.84 | 3.78 | 3.91 | 3.96 | 3.89 | 3.89 |
| Science/Math | 3.90 | 3.96 | 3.94 | 4.03 | 4.02 | 3.99 | 3.99 |
| Social Science | 3.77 | 3.83 | 3.82 | 3.92 | 3.93 | 3.91 | 3.87 |
| Undec./Special | 3.82 | 3.90 | 3.88 | 3.96 | 3.97 | 3.93 | 3.91 |
| • Home Location | | | | | | | |
| San Diego | 3.89 | 3.98 | 3.95 | 4.05 | 4.04 | 3.99 | 3.97 |
| Los Angeles | 3.83 | 3.86 | 3.84 | 3.93 | 3.95 | 3.92 | 3.91 |
| San Francisco | 3.76 | 3.84 | 3.83 | 3.94 | 3.95 | 3.92 | 3.91 |
| Other CA | 3.88 | 3.97 | 3.96 | 4.01 | 4.06 | 4.02 | 4.01 |
| Out of State | 3.88 | 3.90 | 3.97 | 4.11 | 4.10 | 4.10 | 4.07 |
| • First Generation College Status | | | | | | | |
| First Generation | 3.81 | 3.87 | 3.87 | 3.96 | 3.95 | 3.93 | 3.88 |
| Not First Generation | 3.85 | 3.91 | 3.89 | 3.98 | 4.00 | 3.96 | 3.95 |
| • Income Group | | | | | | | |
| High (≥\$98,401) | NA | 3.90 | 3.88 | 3.98 | 4.01 | 3.97 | 3.97 |
| Med. High (\$65,601-\$98,400) | NA | 3.94 | 3.91 | 3.98 | 4.02 | 4.00 | 3.99 |
| Med. Low (\$32,801-\$65,600) | NA | 3.90 | 3.89 | 3.99 | 3.98 | 3.92 | 3.91 |
| Low (≤\$32,800) | NA | 3.85 | 3.85 | 3.93 | 3.94 | 3.90 | 3.86 |
| Missing | NA | 3.89 | 3.89 | 3.96 | 3.99 | 3.96 | 3.97 |
| Total | 3.84 | 3.90 | 3.89 | 3.98 | 3.99 | 3.95 | 3.94 |

Average high school GPAs vary somewhat by gender, ethnicity, and major field of study. For example, the average GPA of females is typically higher than that of males.

¹ GPAs may exceed 4.0 with credit given for honors courses.

² 1997-1999 Income Categories: High = Income ≥ \$87,001 Medium Low = \$29,001-\$58,000
 Medium High = \$58,001-\$87,000 Low = Income ≤ \$29,000

Table 25.

SAT¹ I Scores by Gender, Ethnicity, Major Field of Study, Home Location, 1st Generation College Status & Income Fall Quarter

| First-Time Freshmen SAT I | 1992 Average | 1997 ² Average | 1998 ² Average | 1999 ² Average | 2000 Average | 2001 Average | 2002 Average |
|-----------------------------------|-----------------|------------------------------|------------------------------|------------------------------|-----------------|-----------------|-----------------|
| • Gender | | | | | | | |
| Male | 1176 | 1263 | 1272 | 1290 | 1289 | 1293 | 1274 |
| Female | 1108 | 1209 | 1218 | 1228 | 1233 | 1239 | 1211 |
| • Ethnicity | | | | | | | |
| African-American | 989 | 1105 | 1162 | 1207 | 1165 | 1155 | 1107 |
| Mexican-American | 1006 | 1097 | 1149 | 1140 | 1129 | 1142 | 1092 |
| Native-American | 1087 | 1141 | 1277 | 1260 | 1240 | 1273 | 1255 |
| Asian | 1121 | 1237 | 1239 | 1252 | 1267 | 1273 | 1253 |
| Caucasian | 1181 | 1262 | 1263 | 1282 | 1284 | 1282 | 1270 |
| Filipino | 1084 | 1188 | 1178 | 1193 | 1192 | 1209 | 1162 |
| Latino | 1104 | 1198 | 1189 | 1162 | 1204 | 1201 | 1144 |
| • Major Field of Study | | | | | | | |
| Arts | 1122 | 1223 | 1232 | 1273 | 1245 | 1246 | 1207 |
| Engineering | 1174 | 1247 | 1282 | 1290 | 1290 | 1297 | 1276 |
| Humanities | 1143 | 1231 | 1261 | 1268 | 1257 | 1276 | 1239 |
| Science/Math | 1140 | 1225 | 1231 | 1245 | 1247 | 1259 | 1228 |
| Social Science | 1109 | 1209 | 1217 | 1231 | 1235 | 1240 | 1220 |
| Undec./Special | 1138 | 1239 | 1241 | 1257 | 1260 | 1253 | 1236 |
| • Home Location | | | | | | | |
| San Diego | 1097 | 1186 | 1190 | 1195 | 1202 | 1208 | 1170 |
| Los Angeles | 1135 | 1237 | 1249 | 1257 | 1259 | 1266 | 1240 |
| San Francisco | 1194 | 1272 | 1281 | 1296 | 1296 | 1301 | 1288 |
| Other CA | 1144 | 1233 | 1233 | 1250 | 1262 | 1250 | 1237 |
| Out of State | 1202 | 1288 | 1297 | 1330 | 1318 | 1337 | 1325 |
| • First Generation College Status | | | | | | | |
| First Generation | 1054 | 1148 | 1174 | 1169 | 1174 | 1184 | 1174 |
| Not First Generation | 1158 | 1254 | 1257 | 1284 | 1285 | 1285 | 1256 |
| • Income Group | | | | | | | |
| High (≥\$98,401) | NA | 1271 | 1269 | 1294 | 1309 | 1303 | 1288 |
| Med. High (\$65,601-\$98,400) | NA | 1239 | 1242 | 1268 | 1272 | 1267 | 1260 |
| Med. Low (\$32,801-\$65,600) | NA | 1223 | 1226 | 1242 | 1247 | 1236 | 1217 |
| Low (≤\$32,800) | NA | 1157 | 1172 | 1161 | 1166 | 1195 | 1150 |
| Missing | NA | 1230 | 1277 | 1297 | 1298 | 1291 | 1288 |
| Total | 1142 | 1233 | 1241 | 1256 | 1259 | 1264 | 1239 |

The average SAT composite score of males is typically higher than that of females. Average SAT scores, in general, were slightly lower in 2002 than in previous years.

¹ SAT scores were "recentered" starting with the 1996 freshman cohort.

² 1997-1999 Income Categories: High = Income ≥ \$87,001 Medium Low = \$29,001-\$58,000
 Medium High = \$58,001-\$87,000 Low = Income ≤ \$29,000

Table 26.

SAT¹ II Scores by Gender, Ethnicity, Major Field of Study, Home Location, 1st Generation College Status & Income Fall Quarter

| First-Time Freshmen SAT II | 1992 Average | 1997 ² Average | 1998 ² Average | 1999 ² Average | 2000 Average | 2001 Average | 2002 Average |
|-----------------------------------|-----------------|------------------------------|------------------------------|------------------------------|-----------------|-----------------|-----------------|
| • Gender | | | | | | | |
| Male | NA | 1220 | 1218 | 1263 | 1280 | 1285 | 1278 |
| Female | NA | 1179 | 1182 | 1222 | 1234 | 1242 | 1231 |
| • Ethnicity | | | | | | | |
| African-American | NA | 1060 | 1107 | 1170 | 1164 | 1149 | 1099 |
| Mexican-American | NA | 1060 | 1105 | 1112 | 1124 | 1131 | 1099 |
| Native-American | NA | 1073 | 1221 | 1212 | 1216 | 1283 | 1244 |
| Asian | NA | 1204 | 1194 | 1240 | 1261 | 1279 | 1269 |
| Caucasian | NA | 1225 | 1221 | 1267 | 1282 | 1277 | 1284 |
| Filipino | NA | 1153 | 1137 | 1172 | 1181 | 1193 | 1160 |
| Latino | NA | 1159 | 1144 | 1142 | 1192 | 1189 | 1147 |
| Other | NA | 1242 | 1219 | 1279 | 1284 | 1279 | 1286 |
| • Major Field of Study | | | | | | | |
| Arts | NA | 1207 | 1173 | 1233 | 1247 | 1257 | 1214 |
| Engineering | NA | 1215 | 1237 | 1274 | 1288 | 1299 | 1284 |
| Humanities | NA | 1190 | 1208 | 1263 | 1246 | 1263 | 1257 |
| Science/Math | NA | 1196 | 1192 | 1232 | 1242 | 1255 | 1243 |
| Social Science | NA | 1170 | 1175 | 1213 | 1232 | 1235 | 1234 |
| Undec./Special | NA | 1201 | 1195 | 1242 | 1255 | 1250 | 1251 |
| • Home Location | | | | | | | |
| San Diego | NA | 1149 | 1142 | 1164 | 1191 | 1199 | 1182 |
| Los Angeles | NA | 1200 | 1203 | 1245 | 1252 | 1263 | 1249 |
| San Francisco | NA | 1242 | 1242 | 1288 | 1300 | 1316 | 1313 |
| Other CA | NA | 1190 | 1188 | 1229 | 1261 | 1240 | 1244 |
| Out of State | NA | 1257 | 1207 | 1311 | 1323 | 1325 | 1327 |
| • First Generation College Status | | | | | | | |
| First Generation | NA | 1114 | 1127 | 1148 | 1166 | 1178 | 1176 |
| Not First Generation | NA | 1218 | 1214 | 1270 | 1282 | 1285 | 1272 |
| • Income Group | | | | | | | |
| High (≥\$98,401) | NA | 1235 | 1230 | 1282 | 1310 | 1307 | 1307 |
| Med. High (\$65,601-\$98,400) | NA | 1206 | 1201 | 1249 | 1271 | 1267 | 1268 |
| Med. Low (\$32,801-\$65,600) | NA | 1186 | 1176 | 1224 | 1238 | 1226 | 1226 |
| Low (≤\$32,800) | NA | 1125 | 1127 | 1142 | 1161 | 1193 | 1161 |
| Missing | NA | 1195 | 1230 | 1288 | 1293 | 1291 | 1305 |
| Total | NA | 1198 | 1198 | 1241 | 1255 | 1262 | 1252 |

Given the high correlation between the SAT and SAT II, average SAT II scores typically show the same pattern of variation by student characteristics as the SAT.

¹ SAT scores were "recentered" starting with the 1996 freshman cohort.

² 1997-1999 Income Categories: High = Income ≥ \$87,001 Medium Low = \$29,001-\$58,000
 Medium High = \$58,001-\$87,000 Low = Income ≤ \$29,000

Table 27.

Intercampus Comparison¹ of Average SAT I Composite Scores Fall Quarter

| UC Campus | 1992 | 1993 | 1994 | 1995 | 1996 ² | 1997 | 1998 | 1999 | 2000 | 2001 | 2002 ³ |
|--------------------|-------------|-------------|-------------|-------------|-------------------|-------------|-------------|-------------|-------------|-------------|-------------------|
| • Berkeley | 1221 | 1219 | 1226 | 1218 | 1296 | 1311 | 1330 | 1305 | 1308 | 1293 | NA |
| • Davis | 1079 | 1070 | 1060 | 1070 | 1162 | 1162 | 1149 | 1165 | 1170 | 1163 | 1180 |
| • Irvine | 1016 | 1028 | 1011 | 1015 | 1121 | 1117 | 1126 | 1155 | 1171 | 1167 | 1179 |
| • Los Angeles | 1147 | 1136 | 1122 | 1136 | 1228 | 1239 | 1263 | 1262 | 1266 | 1256 | 1264 |
| • Riverside | 984 | 956 | 948 | 975 | 1046 | 1062 | 1061 | 1057 | 1056 | 1068 | 1057 |
| • San Diego | 1140 | 1130 | 1104 | 1136 | 1221 | 1233 | 1240 | 1250 | 1259 | 1264 | 1239 |
| • Santa Barbara | 1044 | 1005 | 997 | 1020 | 1116 | 1143 | 1158 | 1176 | 1181 | 1183 | 1172 |
| • Santa Cruz | 1055 | 1057 | 1034 | 1036 | 1134 | 1137 | 1135 | 1150 | 1143 | 1150 | 1138 |
| Systemwide | 1099 | 1086 | 1079 | 1088 | 1180 | 1188 | 1196 | 1198 | 1199 | 1197 | NA |

¹ Source: University of California, Frequency Distribution of College Entrance Examination Board (CEEB) Test Scores For Entering Freshmen CSS 050B.

² From 1996, recentered SAT scores are reported.

³ 2002 data based on personal contact with representatives for each UC Campus and are subject to change.

When compared on the basis of average SAT scores, UCSD ranks among the top three in the UC system.

Table 28.

UCSD's Position Relative to Other UC Campuses on SAT I Scores Fall Quarter

| Rank | 1992 | 1993 | 1994 | 1995 | 1996 | 1997 | 1998 | 1999 | 2000 | 2001 | 2002 |
|------|------|------|------|------|------|------|------|------|------|------|------|
| • 1 | UCB | UCB | UCB | UCB | UCB | UCB | UCB | UCB | UCB | UCB | UCB |
| • 2 | UCLA | UCLA | UCLA | UCSD | UCLA | UCLA | UCLA | UCLA | UCLA | UCSD | UCLA |
| • 3 | UCSD | UCSD | UCSD | UCLA | UCSD | UCSD | UCSD | UCSD | UCSD | UCLA | UCSD |
| • 4 | UCD | UCD | UCD | UCD | UCD | UCD | UCSB | UCSB | UCSB | UCSB | UCD |
| • 5 | UCSB | UCI | UCSC | UCSC | UCSC | UCSB | UCD | UCD | UCI | UCI | UCI |
| • 6 | UCSC | UCSC | UCI | UCI | UCI | UCSC | UCSC | UCI | UCD | UCD | UCSB |
| • 7 | UCI | UCSB | UCSB | UCSB | UCSB | UCI | UCI | UCSC | UCSC | UCSC | UCSC |
| • 8 | UCR | UCR | UCR | UCR | UCR | UCR | UCR | UCR | UCR | UCR | UCR |



**■ New
Transfer
Students**

■ New Transfer Students

A record number of transfer students applied for admission to UCSD in 2002. This year also marks the largest entering cohort with 1,498 newly enrolled transfer students, representing a 61% increase over the past decade.

Table 29.

New Transfers: Applicants, Admits & Registered Fall Quarter

| New Transfers | 1992 | 1997 | 1998 | 1999 | 2000 | 2001 | 2002 | 10 Year Δ |
|-----------------------|-------|-------|-------|-------|-------|-------|-------|-----------|
| • Applicants | 4,095 | 4,419 | 4,654 | 5,351 | 6,375 | 7,041 | 7,890 | +93% |
| • Admits | 2,435 | 2,525 | 2,503 | 2,845 | 3,613 | 4,412 | 4,860 | +100% |
| Admit/Applicant Rate | 59% | 57% | 54% | 53% | 57% | 63% | 62% | |
| • Registered | 930 | 965 | 888 | 1,007 | 1,111 | 1,250 | 1,498 | +61% |
| Registered/Admit Rate | 38% | 38% | 35% | 35% | 31% | 28% | 31% | |

Figure 15.

New Transfers: Applicants, Admits & Registered Fall Quarter

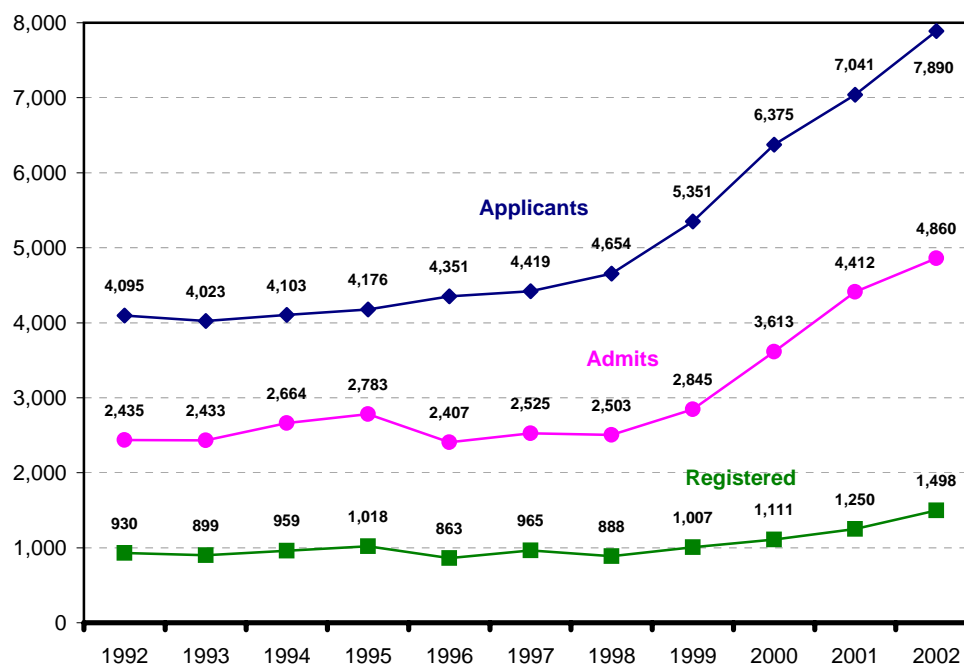


Table 30.

New Transfers by Gender Fall Quarter

| Gender | 1992 | 1997 | 1998 | 1999 | 2000 | 2001 | 2002 | 10 Year Δ |
|--------------|------------|------------|------------|--------------|--------------|--------------|--------------|-------------|
| • Male | 453 49% | 489 51% | 467 53% | 491 49% | 556 50% | 662 53% | 774 52% | +71% |
| • Female | 477 51% | 476 49% | 421 47% | 516 51% | 555 50% | 588 47% | 724 48% | +52% |
| Total | 930 | 965 | 888 | 1,007 | 1,111 | 1,250 | 1,498 | +61% |

At 52%, there are slightly more new male transfer students than female (48%).

Figure 16.

New Transfers by Gender Fall Quarter

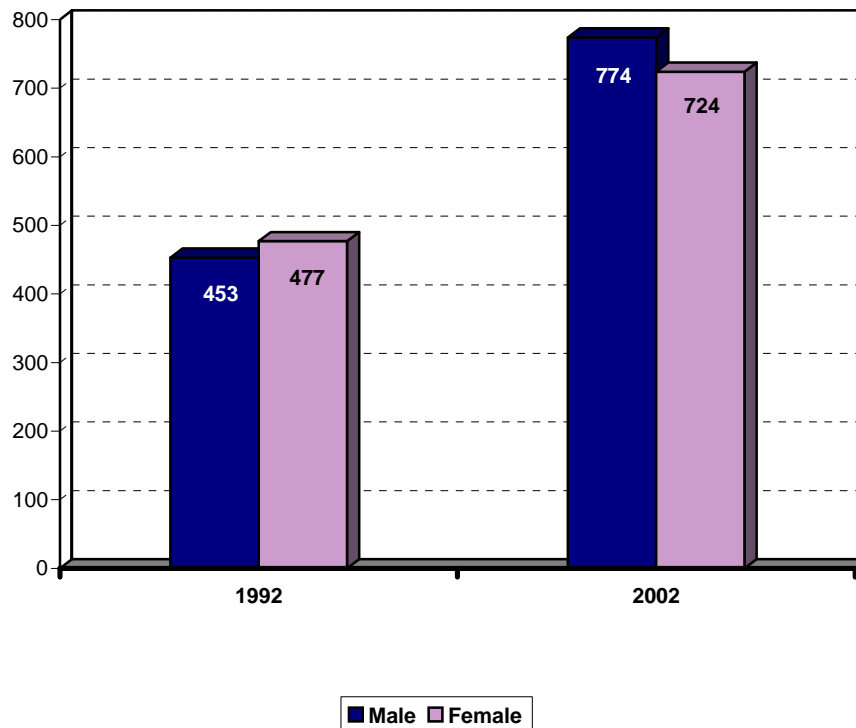


Table 31.

New Transfers by Ethnicity **Fall Quarter**

| Ethnicity | 1992 | 1997 | 1998 | 1999 | 2000 | 2001 | 2002 | 10 Year Δ |
|--------------------|------------|------------|------------|--------------|--------------|--------------|--------------|-------------|
| • African-American | 25 3% | 21 2% | 13 1% | 14 1% | 18 2% | 23 2% | 24 2% | -4% |
| • Mexican-American | 101 11% | 78 8% | 68 8% | 86 9% | 101 9% | 106 8% | 121 8% | +20% |
| • Native-American | 14 2% | 13 1% | 9 1% | 5 1% | 4 0% | 10 1% | 8 1% | -43% |
| • Asian | 123 13% | 224 23% | 197 22% | 222 22% | 279 25% | 330 26% | 491 33% | +299% |
| • Caucasian | 510 55% | 437 45% | 332 37% | 454 45% | 459 41% | 508 41% | 538 36% | +5% |
| • Filipino | 25 3% | 49 5% | 45 5% | 33 3% | 49 4% | 56 4% | 54 4% | +116% |
| • Latino | 31 3% | 30 3% | 25 3% | 30 3% | 34 3% | 38 3% | 44 3% | +42% |
| • Other/Undeclared | 101 11% | 113 12% | 199 22% | 163 16% | 167 15% | 179 14% | 218 15% | +116% |
| Total | 930 | 965 | 888 | 1,007 | 1,111 | 1,250 | 1,498 | +61% |

Over the past decade the proportion of African-American, Native-American, Filipino and Latino students has remained, relatively, unchanged. At the same time, the proportion of Asian students has more than doubled while the proportion of Mexican-American and Caucasian students has declined.

Table 32.

New Transfers by Major Field of Study Fall Quarter

| Major Field of Study | 1992 | 1997 | 1998 | 1999 | 2000 | 2001 | 2002 | 10 Year Δ |
|--------------------------|------------|------------|------------|--------------|--------------|--------------|--------------|-------------|
| • Arts | 42 5% | 47 5% | 40 5% | 63 6% | 73 7% | 101 8% | 110 7% | +162% |
| • Engineering | 161 17% | 197 20% | 207 23% | 203 20% | 278 25% | 273 22% | 333 22% | +107% |
| • Humanities | 99 11% | 64 7% | 67 8% | 66 7% | 80 7% | 73 6% | 96 6% | -3% |
| • Science/Math | 242 26% | 326 34% | 263 30% | 264 26% | 225 20% | 279 22% | 303 20% | +25% |
| • Social Science | 364 39% | 301 31% | 288 32% | 394 39% | 438 39% | 503 40% | 607 41% | +67% |
| • Undeclared/ Special | 22 2% | 30 3% | 23 3% | 17 2% | 17 2% | 21 2% | 49 3% | +123% |
| Total | 930 | 965 | 888 | 1,007 | 1,111 | 1,250 | 1,498 | +61% |

Social Science was by far the most popular field of study among new transfer students in 2002.

Figure 17.

New Transfers by Major Field of Study Fall Quarter

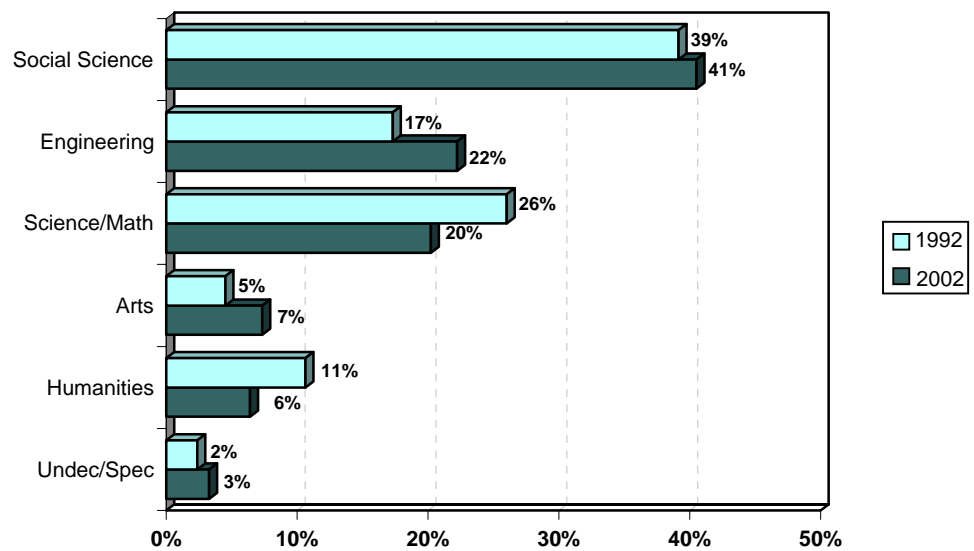


Table 33.

New Transfers by Transfer Institution **Fall Quarter**

| Transfer Institution | 1992 | 1997 | 1998 | 1999 | 2000 | 2001 | 2002 | 10 Year Δ |
|--|------------|------------|------------|--------------|--------------|--------------|--------------|-------------|
| • California Community Colleges | 810 87% | 909 95% | 868 98% | 983 98% | 1,057 95% | 1,164 93% | 1,381 92% | +70% |
| • Transfer Admission Guarantee (TAG) | 231 | 190 | 159 | 184 | 171 | 156 | 201 | -13% |
| • Non-TAG | 699 | 719 | 709 | 799 | 886 | 1,008 | 1,297 | +86% |
| • Intercampus Transfer/ Other 4 yr. College | 101 11% | 42 4% | 16 2% | 12 1% | 48 4% | 75 6% | 87 6% | -14% |
| • Other/Unknown | 19 2% | 14 1% | 4 0% | 12 1% | 6 1% | 11 1% | 30 2% | +58% |
| Total | 930 | 965 | 888 | 1,007 | 1,111 | 1,250 | 1,498 | +61% |

Ninety-two percent of new transfer students attended a California Community College prior to enrolling at UCSD. The largest number of new transfer students come from either San Diego or Los Angeles county.

Table 34.

New Transfers by Home Location **Fall Quarter**

| Home Location | 1992 | 1997 | 1998 | 1999 | 2000 | 2001 | 2002 | 10 Year Δ |
|--------------------|--------------|--------------|--------------|--------------|--------------|--------------|--------------|-------------|
| • San Diego | 519 (56%) | 428 (44%) | 325 (37%) | 362 (36%) | 362 (33%) | 374 (30%) | 461 (31%) | -11% |
| • Los Angeles | 226 (24%) | 265 (27%) | 291 (33%) | 320 (32%) | 354 (32%) | 386 (31%) | 440 (29%) | +95% |
| • San Francisco | 86 (9%) | 125 (13%) | 129 (15%) | 152 (15%) | 182 (16%) | 218 (17%) | 231 (15%) | +169% |
| • Other California | 76 (8%) | 107 (11%) | 100 (11%) | 118 (12%) | 136 (12%) | 147 (12%) | 161 (11%) | +112% |
| • Out-of-State | 9 (1%) | 4 (0%) | 2 (0%) | 6 (0%) | 6 (1%) | 6 (0%) | 10 (1%) | +11% |
| • Foreign | 14 (2%) | 36 (4%) | 41 (5%) | 49 (5%) | 71 (6%) | 119 (10%) | 195 (13%) | +1293% |
| Total | 930 | 965 | 888 | 1,007 | 1,111 | 1,250 | 1,498 | +61% |

Table 35.

New Transfers by Undergraduate College Fall Quarter

| Undergraduate College | 1992 | 1997 | 1998 | 1999 | 2000 | 2001 | 2002 | 10 Year Δ |
|-----------------------|------------|------------|------------|--------------|--------------|--------------|--------------|-------------|
| • Revelle | 104 11% | 132 14% | 133 15% | 142 14% | 160 14% | 217 17% | 264 18% | +154% |
| • John Muir | 222 24% | 214 22% | 193 22% | 239 24% | 283 25% | 270 22% | 314 21% | +41% |
| • Thurgood Marshall | 215 23% | 224 23% | 223 25% | 254 25% | 247 22% | 277 22% | 338 23% | +57% |
| • Earl Warren | 289 31% | 302 31% | 265 30% | 264 26% | 281 25% | 282 23% | 327 22% | +13% |
| • Eleanor Roosevelt | 100 11% | 93 10% | 74 8% | 108 11% | 140 13% | 204 16% | 255 17% | +155% |
| Total | 930 | 965 | 888 | 1,007 | 1,111 | 1,250 | 1,498 | +61% |

In 2002, Thurgood Marshall College enrolled the largest number of transfer students, followed closely behind by Earl Warren and John Muir Colleges.

Figure 18.

New Transfers by Undergraduate College Fall Quarter

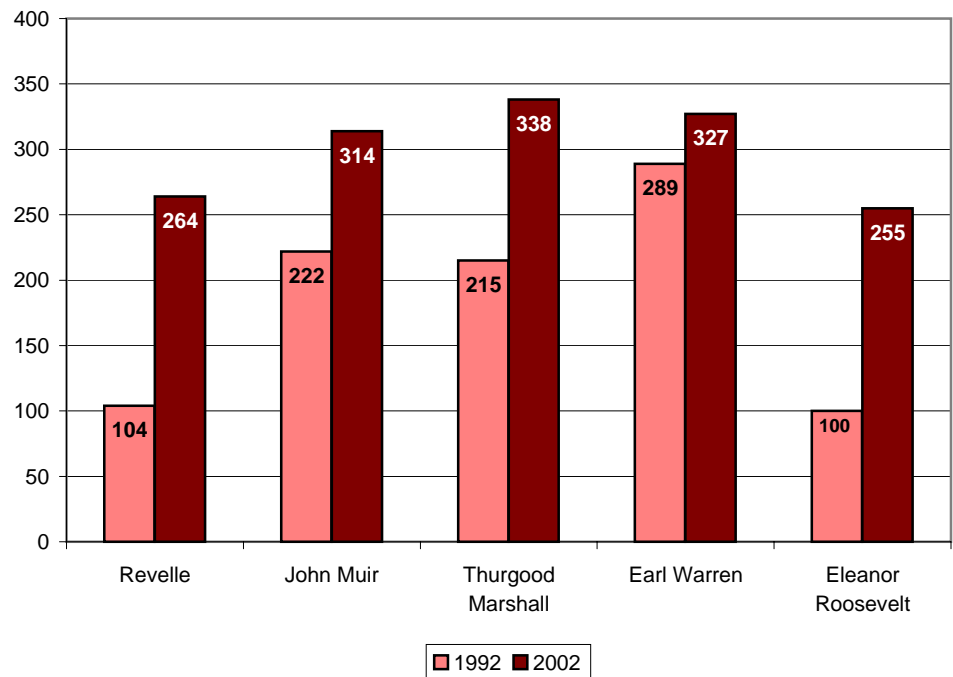


Table 36.

New Transfers by 1st Generation College Status Fall Quarter

| College Status | 1992 | 1997 | 1998 | 1999 | 2000 | 2001 | 2002 | 10 Year Δ |
|------------------------|--------------|--------------|--------------|--------------|--------------|--------------|----------------|--------------|
| • First Generation | 273 (29%) | 344 (36%) | 286 (32%) | 339 (34%) | 366 (33%) | 388 (31%) | 394 (26%) | + 44% |
| • Not First Generation | 657 (71%) | 621 (64%) | 602 (68%) | 668 (66%) | 745 (67%) | 862 (69%) | 1,104 (74%) | + 68% |
| Total | 930 | 965 | 888 | 1,007 | 1,111 | 1,250 | 1,498 | + 61% |

The majority of new transfer students have at least one parent who has graduated from a two-year junior college or four-year college/ university.

Table 37.

New Transfers by Income Group Fall Quarter

| Income | 1992 | 1997* | 1998* | 1999* | 2000 | 2001 | 2002 | 10 Year Δ |
|--|-----------|------------|------------|--------------|--------------|--------------|--------------|-----------|
| • High (≥\$98,401) | NA NA | 118 12% | 151 17% | 153 15% | 183 16% | 249 20% | 270 18% | NA |
| • Medium High (\$65,601 - \$98,400) | NA NA | 142 15% | 111 13% | 125 12% | 139 13% | 154 12% | 212 14% | NA |
| • Medium Low (\$32,801 - \$65,600) | NA NA | 142 15% | 163 18% | 221 22% | 216 19% | 245 20% | 294 20% | NA |
| • Low (≤\$32,800) | NA NA | 170 18% | 165 19% | 221 22% | 212 19% | 233 19% | 259 17% | NA |
| • Missing | NA NA | 393 41% | 298 34% | 287 29% | 361 32% | 369 30% | 463 31% | NA |
| Total | NA | 965 | 888 | 1,007 | 1,111 | 1,250 | 1,498 | NA |

* 1997-1999 Income Categories:
 High = Income ≥ \$87,001
 Medium High = \$58,001-\$87,000
 Medium Low = \$29,001-\$58,000
 Low = Income ≤ \$29,000

Table 38.

Major* Feeder Transfer Institutions **Fall Quarter**

| School | City | Enrollment N Fall 2002 | % of Total Enrollment |
|---|-----------------|---------------------------|--------------------------|
| San Diego Mesa College | San Diego | 156 | 10.4% |
| De Anza College | Cupertino | 101 | 6.7% |
| Palomar College | San Marcos | 87 | 5.8% |
| Santa Monica College | Santa Monica | 66 | 4.4% |
| Mira Costa College | Oceanside | 63 | 4.2% |
| Grossmont Community College | El Cajon | 56 | 3.7% |
| Southwestern College | Chula Vista | 50 | 3.3% |
| Pasadena City College | Pasadena | 44 | 2.9% |
| Diablo Valley College | Pleasant Hills | 43 | 2.9% |
| Foothill College | Los Altos Hills | 38 | 2.5% |
| Orange Coast College | Costa Mesa | 34 | 2.3% |
| San Diego City College | San Diego | 34 | 2.3% |
| San Diego-Miramar College | San Diego | 27 | 1.8% |
| Saddleback Community College South | Mission Viejo | 26 | 1.7% |
| Moorpark College | Moorpark | 25 | 1.7% |
| Mount San Antonio College | Walnut | 25 | 1.7% |
| Santa Barbara City College | Santa Barbara | 24 | 1.6% |
| UC Riverside | Riverside | 23 | 1.5% |
| City College of San Francisco | San Francisco | 21 | 1.4% |
| Los Angeles Pierce College | Woodland Hills | 19 | 1.3% |
| Sacramento City College | Sacramento | 19 | 1.3% |
| El Camino College | Torrance | 18 | 1.2% |
| Fullerton College | Fullerton | 16 | 1.1% |
| Irvine Valley College | Irvine | 16 | 1.1% |
| UC Santa Cruz | Santa Cruz | 16 | 1.1% |
| Fresno City College | Fresno | 15 | 1.0% |
| Santa Rosa Junior College | Santa Rosa | 15 | 1.0% |
| College of the Canyons | Valencia | 14 | 0.9% |
| Cuyamaca College | El Cajon | 14 | 0.9% |
| Sierra College | Rocklin | 14 | 0.9% |
| UC Santa Barbara | Santa Barbara | 14 | 0.9% |
| College of San Mateo | San Mateo | 13 | 0.9% |
| Glendale Community College | Glendale | 13 | 0.9% |
| Ventura Community College | Ventura | 13 | 0.9% |
| West Valley College | Saratoga | 13 | 0.9% |
| American River College | Sacramento | 12 | 0.8% |
| Cerritos College | Norwalk | 11 | 0.7% |
| Subtotal (Number of Transfer Institutions = 36) | | 1,208 | 80.6% |
| Other Institutions (Number of Transfer Institutions = 93) | | 290 | 19.4% |
| Total (Number of Transfer Institutions = 129) | | 1,498 | 100.0% |

* Eleven or more matriculants from named transfer institution.

With 156 students transferring to UCSD (10.4% of the total), San Diego Mesa College tops the list of major feeder transfer institutions.



**New
Transfer
Student
Academic
Preparation**

■ Academic Preparation: New Transfer Students

Table 39.

New Transfer Cohort by Transfer GPA Averages Fall Quarter

| Transfer | 1992 | 1997 | 1998 | 1999 | 2000 | 2001 | 2002 |
|----------------|------|------|------|------|------|------|------|
| • Transfer GPA | 3.13 | 3.29 | 3.27 | 3.25 | 3.29 | 3.30 | 3.32 |

Table 40.

New Transfer Cohort by Academic Indicator Ranges Fall Quarter

| Transfer GPA Range | Percentage in Range | |
|--------------------|---------------------|-------------|
| | 1992 | 2002 |
| • 4.00 | 4% | 3% |
| • 3.90 - 3.99 | 4% | 2% |
| • 3.60 - 3.89 | 19% | 19% |
| • 3.30 - 3.59 | 22% | 28% |
| • Low - 3.29 | 51% | 48% |
| Total | 100% | 100% |

Reaching a record high, the mean transfer GPA for the 2002 new transfer cohort was 3.32.

Approximately, 24% of the new transfer cohort had a GPA of 3.60 and higher.



**■ Degrees
Conferred**

■ Degrees Conferred

Setting a new record, UCSD awarded more than forty-eight hundred undergraduate, graduate and professional degrees in 2001/2002.

Table 41.

Degrees Conferred: All Degree Types Fall Quarter

| All Degree Types | 1991/1992 | 1997/1998 | 1998/1999 | 1999/2000 | 2000/2001 | 2001/2002 | 10 Year Δ |
|---------------------------|--------------|--------------|--------------|--------------|--------------|--------------|-------------|
| • Bachelors | 2,890 | 3,221 | 3,574 | 3,530 | 3,713 | 3,922 | +36% |
| • Masters | 356 | 404 | 358 | 408 | 423 | 495 | +39% |
| • Candidate in Philosophy | 156 | 178 | 120 | 150 | 147 | 117 | -25% |
| • Doctor of Philosophy | 227 | 310 | 303 | 294 | 285 | 278 | +22% |
| • Doctor of Medicine | 119 | 102 | 35 | 130 | 136 | 61 | -49% |
| Total | 3,748 | 4,215 | 4,390 | 4,512 | 4,704 | 4,873 | +30% |

Figure 19.

Degrees Conferred Undergraduate and Graduate Degree Trends Fall Quarter

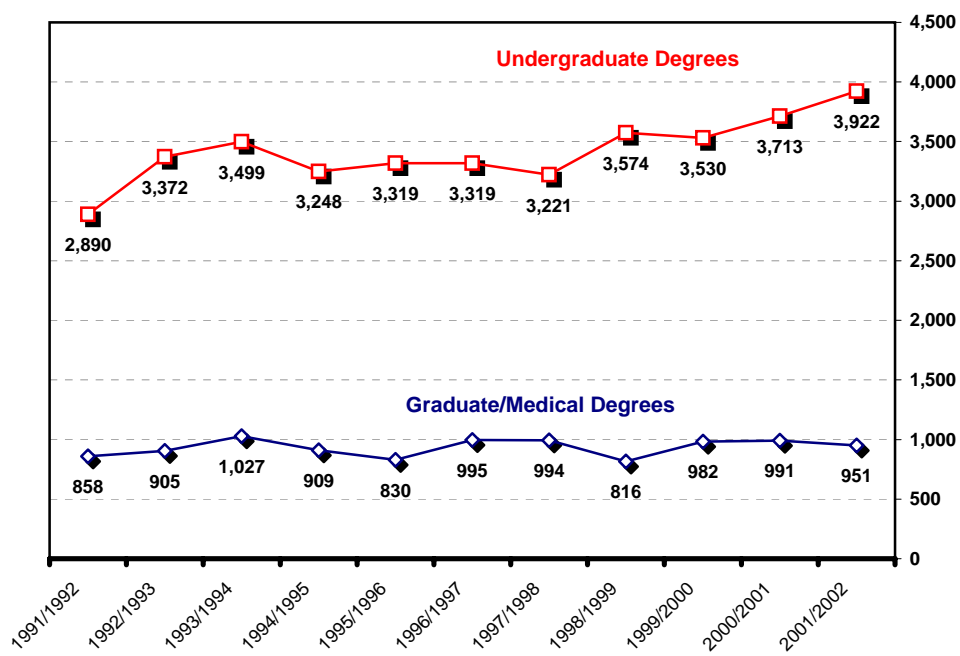


Table 42.

Undergraduate Degrees by Gender Fall Quarter

| Gender | 1991/1992 | 1997/1998 | 1998/1999 | 1999/2000 | 2000/2001 | 2001/2002 | 10 Year Δ |
|-------------------------|--------------|--------------|--------------|--------------|--------------|--------------|-------------|
| • Male | 1,458 50% | 1,554 48% | 1,728 48% | 1,665 47% | 1,691 46% | 1,809 46% | +24% |
| • Female | 1,432 50% | 1,667 52% | 1,846 52% | 1,865 53% | 2,022 54% | 2,113 54% | +48% |
| Total UG Degrees | 2,890 | 3,221 | 3,574 | 3,530 | 3,713 | 3,922 | +36% |

Of the 3,922 undergraduate degrees awarded in 2001/2002, the majority (54%) were awarded to women.

Figure 20.

Undergraduate Degrees by Gender Fall Quarter

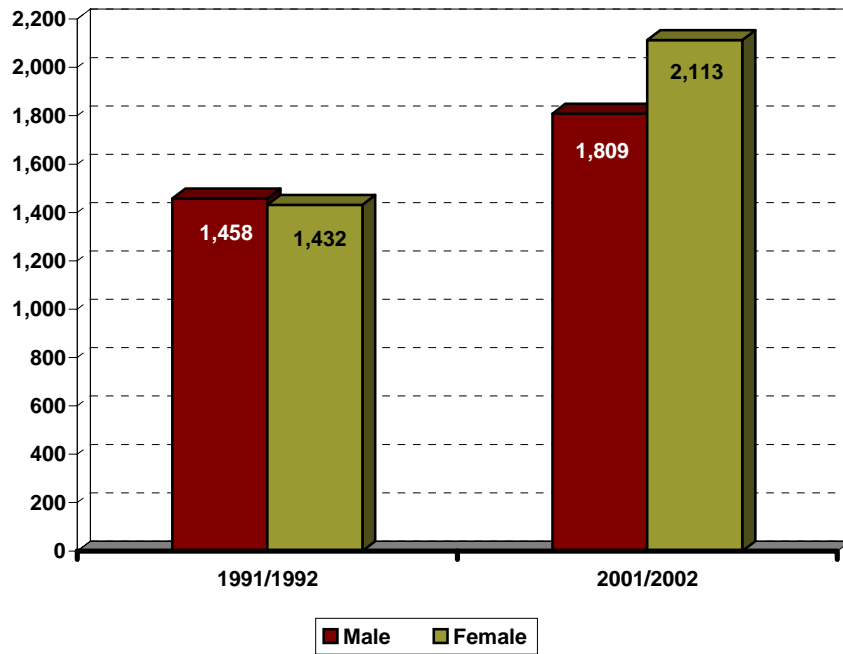


Table 43.

Undergraduate Degrees by Ethnicity

Fall Quarter

| Ethnicity | 1991/1992 | 1997/1998 | 1998/1999 | 1999/2000 | 2000/2001 | 2001/2002 | 10 Year Δ |
|-------------------------|--------------|--------------|--------------|--------------|--------------|--------------|-------------|
| • African-American | 81 3% | 72 2% | 57 2% | 65 2% | 59 2% | 58 1% | -28% |
| • Mexican-American | 142 5% | 279 9% | 276 8% | 255 7% | 293 8% | 284 7% | +100% |
| • Native-American | 21 1% | 29 1% | 24 1% | 35 1% | 34 1% | 25 1% | +19% |
| • Asian | 425 15% | 807 25% | 1,005 28% | 1,011 29% | 1,029 28% | 1,039 26% | +144% |
| • Caucasian | 1,856 64% | 1,494 46% | 1,616 45% | 1,482 42% | 1,550 42% | 1,667 43% | -10% |
| • Filipino | 116 4% | 185 6% | 173 5% | 213 6% | 193 5% | 191 5% | +65% |
| • Latino | 82 3% | 78 2% | 84 2% | 64 2% | 95 3% | 90 2% | +10% |
| • Other/Undeclared | 167 6% | 277 9% | 339 9% | 405 11% | 460 12% | 568 14% | +240% |
| Total UG Degrees | 2,890 | 3,221 | 3,574 | 3,530 | 3,713 | 3,922 | +36% |

Approximately, 43% of the bachelor's degrees were awarded to students of color.

Figure 21.

Undergraduate Degrees by Ethnicity

Fall Quarter

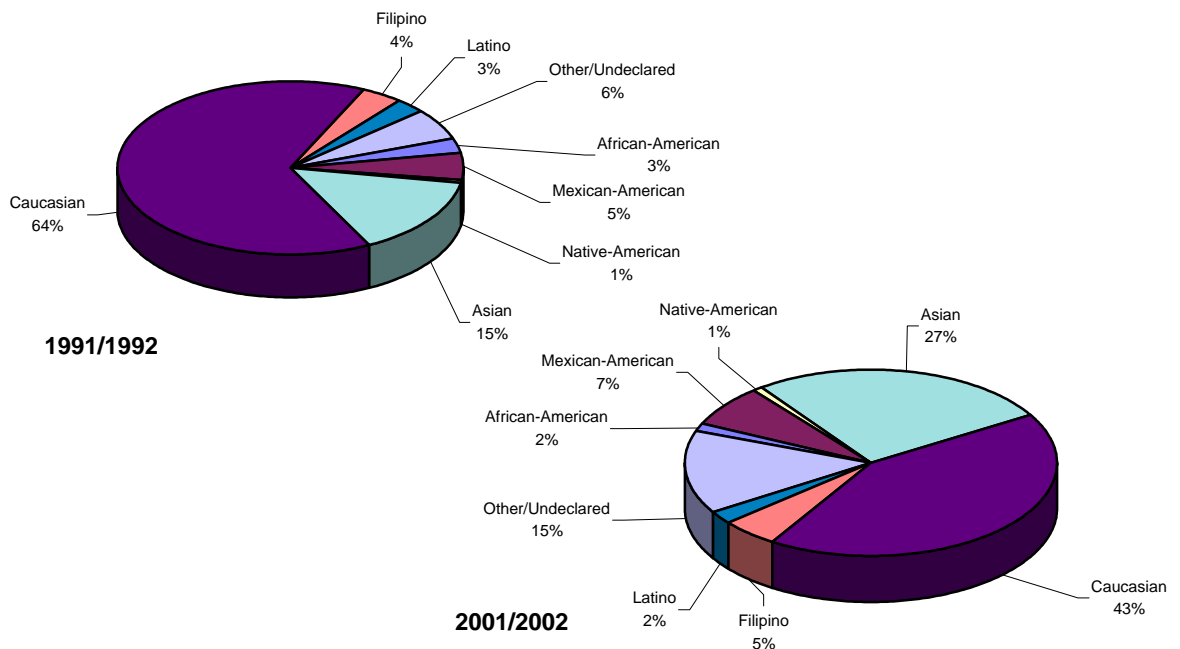


Table 44.

Undergraduate Degrees by Major Field of Study Fall Quarter

| Major Field of Study | 1991/1992 | 1997/1998 | 1998/1999 | 1999/2000 | 2000/2001 | 2001/2002 | 10 Year Δ |
|-------------------------|--------------|--------------|--------------|--------------|--------------|--------------|------------------|
| • Arts | 139 5% | 123 4% | 156 4% | 147 4% | 214 6% | 236 6% | +70% |
| • Engineering | 327 11% | 402 12% | 446 13% | 533 15% | 540 15% | 563 14% | +72% |
| • Humanities | 317 11% | 291 9% | 312 9% | 250 7% | 273 7% | 244 6% | -23% |
| • Science/Math | 684 24% | 1,040 32% | 1,160 32% | 1,102 31% | 1,029 28% | 957 24% | +40% |
| • Social Science | 1,413 49% | 1,362 42% | 1,494 42% | 1,494 42% | 1,649 44% | 1,916 49% | +36% |
| • Double/Special | 10 0% | 3 0% | 6 0% | 4 0% | 8 0% | 6 0% | -40% |
| Total UG Degrees | 2,890 | 3,221 | 3,574 | 3,530 | 3,713 | 3,922 | +36% |

The largest number of bachelor's degrees were awarded to Social Science majors.

Table 45.

Undergraduate Degrees by College Fall Quarter

| College | 1991/1992 | 1997/1998 | 1998/1999 | 1999/2000 | 2000/2001 | 2001/2002 | 10 Year Δ |
|-------------------------|--------------|--------------|--------------|--------------|--------------|--------------|------------------|
| • Revelle | 614 21% | 564 18% | 708 20% | 682 19% | 650 18% | 725 18% | +18% |
| • John Muir | 776 27% | 840 26% | 837 23% | 766 22% | 847 23% | 925 24% | +19% |
| • Thurgood Marshall | 650 22% | 635 20% | 751 21% | 771 22% | 804 22% | 792 20% | +22% |
| • Earl Warren | 681 26% | 856 27% | 888 25% | 938 27% | 968 26% | 979 25% | +44% |
| • Eleanor Roosevelt* | 169 6% | 326 10% | 390 11% | 373 11% | 444 12% | 501 13% | +196% |
| Total UG Degrees | 2,890 | 3,221 | 3,574 | 3,530 | 3,713 | 3,922 | +36% |

* Eleanor Roosevelt College enrolled its first class of undergraduates in 1988.

Table 46.

Undergraduate Degrees by 1st Generation College Status Fall Quarter

| College Status | 1991/1992 | 1997/1998 | 1998/1999 | 1999/2000 | 2000/2001 | 2001/2002 | 10 Year Δ |
|-------------------------|-----------|--------------|--------------|--------------|--------------|--------------|------------------|
| • First Generation | NA | 613 | 855 | 793 | 859 | 870 | NA |
| | NA | 19% | 24% | 22% | 23% | 22% | |
| • Not First Generation | NA | 2,608 | 2,719 | 2,737 | 2,854 | 3,052 | NA |
| | NA | 81% | 76% | 78% | 77% | 78% | |
| Total UG Degrees | NA | 3,221 | 3,574 | 3,530 | 3,713 | 3,922 | NA |

Table 47.

Undergraduate Degrees by Income Group Fall Quarter

| Income | 1991/1992 | 1997/1998* | 1998/1999* | 1999/2000 | 2000/2001 | 2001/2002 | 10 Year Δ |
|--|-----------|--------------|--------------|--------------|--------------|--------------|------------------|
| • High (\geq \$98,401) | NA | 613 | 721 | 746 | 758 | 828 | NA |
| | NA | 19% | 20% | 21% | 20% | 21% | |
| • Medium High (\$65,601 - \$98,400) | NA | 545 | 564 | 655 | 614 | 618 | NA |
| | NA | 17% | 16% | 19% | 17% | 16% | |
| • Medium Low (\$32,801 - \$65,600) | NA | 586 | 694 | 657 | 850 | 872 | NA |
| | NA | 18% | 19% | 19% | 23% | 22% | |
| • Low (\leq \$32,800) | NA | 469 | 681 | 643 | 760 | 735 | NA |
| | NA | 15% | 19% | 18% | 20% | 19% | |
| • Missing | NA | 1,008 | 914 | 829 | 731 | 869 | NA |
| | NA | 31% | 26% | 23% | 20% | 22% | |
| Total UG Degrees | NA | 3,221 | 3,574 | 3,530 | 3,713 | 3,922 | NA |

* 1997-1999 Income Categories:

High = Income \geq \$87,001

Medium High = \$58,001-\$87,000

Medium Low = \$29,001-\$58,000

Low = Income \leq \$29,000

Table 48.

Time-to-Degree*/Academic Performance
Entered UCSD from High School Fall Quarter

| Undergraduate Degrees | 1991/1992 | 1997/1998 | 1998/1999 | 1999/2000 | 2000/2001 | 2001/2002 |
|------------------------------------|------------|------------|------------|------------|------------|------------|
| • Time-to-Degree | | | | | | |
| Average Elapsed Time in Years | 4.7 yrs. | 4.4 yrs. | 4.4 yrs. | 4.5 yrs. | 4.4 yrs. | 4.4 yrs. |
| Average Elapsed Time in Quarters | 14.0 qtrs. | 13.3 qtrs. | 13.3 qtrs. | 13.5 qtrs. | 13.2 qtrs. | 13.2 qtrs. |
| • GPA at Graduation | 3.08 | 3.14 | 3.14 | 3.14 | 3.16 | 3.14 |
| GPA \geq 3.5 (B+ or greater) | 16.3% | 21.0% | 21.5% | 21.5% | 22.4% | 20.2% |
| 3.00 \leq GPA $<$ 3.5 (B to B+) | 44.1% | 44.0% | 42.6% | 42.8% | 44.3% | 44.8% |
| 2.50 \leq GPA $<$ 3.00 (C+ to B) | 30.4% | 27.8% | 28.2% | 28.1% | 26.4% | 27.6% |
| 2.0 \leq GPA $<$ 2.50 (C to C+) | 9.1% | 7.2% | 7.7% | 7.6% | 6.9% | 7.3% |

* Time-to-degree is reported in elapsed quarters from first enrollment date to graduation. Only the records of students who enter UCSD in the Fall Quarter are included in time-to-degree calculations. An academic year is defined as three quarters; twelve quarters equal four years. Summer degrees are combined with Fall degrees, and combined, represent one quarter.

The average time-to-degree for undergraduate students entering from high school was just over 13 quarters or 4.4 years. The average GPA for the 2001/2002 graduating class was 3.14.

Figure 22.

Grade Distribution: Degree Recipients Fall Quarter

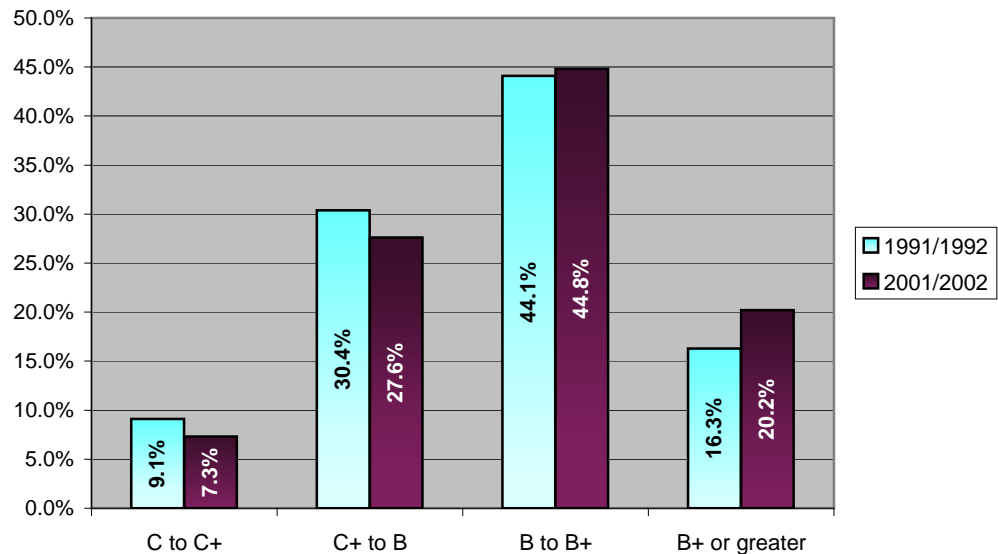


Table 49.

Time-to-Degree*/Academic Performance
Entered UCSD from a Two-Year Community College Fall Quarter

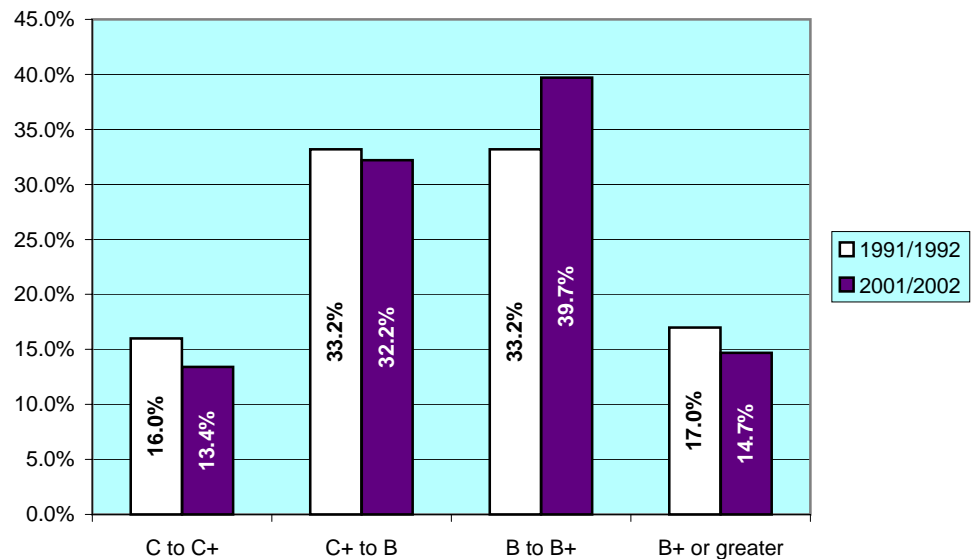
| Undergraduate Degrees | 1991/1992 | 1997/1998 | 1998/1999 | 1999/2000 | 2000/2001 | 2001/2002 |
|----------------------------------|------------|-----------|-----------|-----------|-----------|-----------|
| • Time-to-Degree | | | | | | |
| Average Elapsed Time in Years | 3.6 yrs. | 3.0 yrs. | 2.9 yrs. | 3.0 yrs. | 2.9 yrs. | 2.8 yrs. |
| Average Elapsed Time in Quarters | 10.9 qtrs. | 8.9 qtrs. | 8.7 qtrs. | 9.0 qtrs. | 8.7 qtrs. | 8.4 qtrs. |
| • GPA at Graduation | 3.00 | 3.03 | 3.04 | 3.01 | 3.02 | 3.03 |
| GPA ≥ 3.5 (B+ or greater) | 17.0% | 17.3% | 17.7% | 16.8% | 16.3% | 14.7% |
| 3.00 ≤ GPA < 3.5 (B to B+) | 33.2% | 36.7% | 36.5% | 34.6% | 36.3% | 39.7% |
| 2.50 ≤ GPA < 3.00 (C+ to B) | 33.2% | 32.4% | 32.1% | 32.1% | 33.3% | 32.2% |
| 2.0 ≤ GPA < 2.50 (C to C+) | 16.0% | 13.6% | 13.7% | 16.5% | 13.9% | 13.4% |

* Time-to-degree is reported in elapsed quarters from first enrollment date to graduation. Only the records of students who enter UCSD in the Fall Quarter are included in time-to-degree calculations. An academic year is defined as three quarters; twelve quarters equal four years. Summer degrees are combined with Fall degrees, and combined, represent one quarter.

Community College transfer students complete their degree requirements at UCSD in just under nine quarters or three years. The average GPA for the 2001/2002 graduating class for courses taken at UCSD was 3.03.

Figure 23.

Grade Distribution: Degree Recipients Fall Quarter





**■ Appendix:
Undergraduate
Major Fields
of Study /
Academic
Departments**

■ Undergraduate Major Fields of Study/Academic Departments

ARTS

Music Department

- MU01 Pre-Interdisciplinary Computing
- MU25 Music
- MU26 Music Humanities
- MU27 Interdisciplinary Computing and the Arts

Theatre & Dance Department

- TH26 Theatre
- TH27 Dance

Visual Arts Department

- VA01 Pre-Interdisciplinary Computing and the Arts
- VA02 Pre-Visual Arts (Media)
- VA26 Visual Arts (Art History/Criticism)
- VA27 Visual Arts (Media)
- VA28 Visual Arts (Studio)
- VA29 Interdisciplinary Computing and the Arts

SCHOOL OF ENGINEERING

Bioengineering Department

- BE01 Pre-Bioengineering
- BE02 Pre-Bioengineering: Pre-Medical
- BE03 Pre-Bioengineering: Biotechnology
- BE04 Pre-Bioengineering: Bioinformatics
- BE25 Bioengineering
- BE26 Bioengineering: Pre-Medical
- BE27 Bioengineering: Biotechnology
- BE28 Bioengineering: Bioinformatics

Chemical Engineering

- CE25 Chemical Engineering

Computer Science and Engineering Department

- CS03 Pre-Computer Science with Specialization in Bioinformatics
- CS25 Computer Engineering (see also Electrical and Computer Engineering EC26)
- CS26 Computer Science
- CS27 Computer Science with Specialization in Bioinformatics

Electrical and Computer Engineering Department

- EC03 Pre-Electrical Engineering
- EC04 Pre-Engineering Physics
- EC26 Computer Engineering (see also Computer Science and Engineering CS25)
- EC27 Electrical Engineering
- EC28 Engineering Physics

Mechanical and Aerospace Engineering Department

- MC25 Aerospace Engineering
- MC27 Mechanical Engineering
- MC28 Engineering Science
- MC29 Environmental Engineering

Structural Engineering

- SE26 Engineering Sciences
- SE27 Structural Engineering

SCIENCE AND MATH

Biology Department

- BI07 Pre-Biology with Specialization in Bioinformatics
- BI28 Animal Physiology and Neuroscience
- BI29 Biochemistry and Cell Biology
(see also Chemistry CH31)
- BI30 Ecology, Behavior and Evolution
- BI31 General Biology
- BI32 Microbiology
- BI33 Molecular Biology
- BI34 Biology with Specialization in Bioinformatics

Chemistry and Biochemistry Department

- CH01 Pre-Bioinformatics
- CH25 Chemistry
- CH28 Chemistry with Specialization in Earth Sciences
- CH31 Biochemistry/Chemistry (see also Biology BI29)
- CH32 Chemical Physics
- CH33 Chemical Education
- CH34 Environmental Chemistry
- CH35 Pharmacological Chemistry
- CH36 Molecular Synthesis
- CH37 Bioinformatics

Earth Sciences Program

- EA25 Earth Sciences
- EA26 Earth Sciences - Chemistry
- EA27 Earth Sciences - Physics

Environmental Systems

- ES25 Environmental Systems (Earth Sciences)
- ES26 Environmental Systems (Ecology, Behavior, & Evolution)
- ES27 Environmental Systems (Environmental Chemistry)
- ES28 Environmental Systems (Environmental Policy)

Mathematics Department

- MA01 Pre-Mathematics - Computer Science
- MA27 Mathematics (Applied)
- MA29 Mathematics
- MA30 Mathematics-Computer Science
- MA31 Mathematics/Applied Science
- MA32 Mathematics/Secondary Education
- MA33 Joint Major in Mathematics & Economics
- MA34 Mathematics/Scientific Computation

Physics Department

- PY26 Physics-Biophysics
- PY28 Physics with Specialization in Earth Sciences
- PY29 Physics
- PY30 General Physics
- PY31 General Physics, Secondary Education
- PY32 Physics with Specialization in Materials Physics
- PY33 Physics with Specialization in Computational Physics
- PY34 Physics with Specialization in Astrophysics

HUMANITIES

Classical Studies

CL25 Classical Studies

History Department

HI25 History

Literature Department

LT01 Pre-Literature/Writing
 LT29 French Literature
 LT31 German Literature
 LT32 Russian Literature
 LT33 Spanish Literature
 LT34 Literature/Writing
 LT35 Italian Literature
 LT36 Literatures in English
 LT37 Literature/Composite Major
 LT38 Literatures of the World

Philosophy Department

PL25 Philosophy

SOCIAL SCIENCE

Anthropology Department

AN25 Anthropology
 AN26 Anthropology (Concentration in Biological Anthropology)
 AN27 Anthropology (Concentration in Archaeology)

Chinese Studies

CN25 Chinese Studies

Cognitive Science Department

CG25 Cognitive Science
 CG27 Cognitive Science with Specialization in Computation
 CG28 Cognitive Science with Specialization in Human Cognition
 CG29 Cognitive Science with Specialization in Neuroscience
 CG30 Cognitive Science with Specialization in Hum. Comp. Inter.
 CG31 Cognitive Science with Clinical Aspects in Cognition

Communication Department

CM26 Communication

Critical Gender Studies

CR25 Critical Gender Studies

Economics Department

EN25 Economics
 EN26 Management Science
 EN28 Joint Major in Mathematics & Economics

Ethnic Studies Department

ET25 Ethnic Studies

German Studies

GS25 German Studies

Human Development Program

HD01 Pre-Human Development
 HD25 Human Development

International Studies

IS25 International Studies - Anthropology
 IS26 International Studies - Economics
 IS27 International Studies - History
 IS28 International Studies - Linguistics

SOCIAL SCIENCE - continued

International Studies - continued

IS29 International Studies - Literature
 IS30 International Studies - Political Science
 IS31 International Studies - Sociology

Italian Studies

IT25 Italian Studies

Japanese Studies

JA25 Japanese Studies

Judaic Studies

JU25 Judaic Studies

Latin American Studies

LA25 Latin American Studies

Linguistics Department

LN25 Linguistics
 LN29 Linguistics (Specialization in Language and Society)
 LN32 Linguistics (Specialization in Cognition & Language)
 LN33 Language Studies (Specialization in [the language of specialization])

Political Science Department

PS25 Political Science
 PS26 Political Science-American Politics
 PS27 Political Science-Comparative Politics
 PS28 Political Science-International Relations
 PS29 Political Science-Political Theory
 PS30 Political Science-Public Law
 PS31 Political Science-Public Policy

Psychology Department

PC26 Psychology

Program for the Study of Religion

RE26 Study of Religion

Russian and Soviet Studies

RU25 Russian and Soviet Studies

Sociology Department

SO25 Sociology

Third World Studies

TW25 Third World Studies

Urban Studies and Planning Program

US26 Urban Studies and Planning

SPECIAL AND UNDECLARED

Individual Studies

IN25 John Muir College Special Project Major
 IN26 Revelle College Individual Major
 IN27 Eleanor Roosevelt College Individual Studies
 IN28 Earl Warren College Individual Studies
 IN29 Thurgood Marshall College Individual Studies

Undeclared

UN27 Undeclared

Limited Status

Special-Employee



The *Student Digest* is an annual publication of the
Office of Student Research & Information,
Student Affairs.

This document is also available on the
World Wide Web at:

<http://ugr8.ucsd.edu>