



University of California,  
San Diego



FALL  
2004

# STUDENT digest



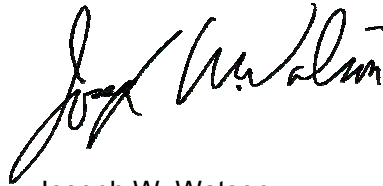
Enrollment  
and Academic  
Performance  
Statistics

Office of Student  
Research & Information,  
Student Affairs  
[studentresearch.ucsd.edu](http://studentresearch.ucsd.edu)

---

## ■ INTRODUCTION

□ The *Student Digest*, published annually by the Office of Student Research and Information, provides the campus community with a broad overview of trends in undergraduate enrollments, academic performance and graduation statistics. If you have questions or comments regarding this publication, please contact the Office of Student Research and Information/Student Affairs at (858) 534-2382. If you wish to view this report and other statistical reports, they can be found on the World Wide Web at <http://studentresearch.ucsd.edu>.



Joseph W. Watson  
Vice Chancellor

---

## **STUDENT DIGEST**

### **Enrollment and Academic Performance Statistics**

**Fall 2004**

**University of California, San Diego**

William B. Armstrong, Ph.D.  
Director

Heidi M. Carty, Ph.D.  
Principal Research Analyst

Greg Martin  
Programmer Analyst

Jason R. Thornton  
Research Analyst

Student Research & Information  
Student Affairs  
University of California, San Diego  
La Jolla, CA 92093-0088  
<http://studentresearch.ucsd.edu>

# ■ Table of Contents

<b>Total Campus Enrollment</b>	<b>4</b>
Total Campus Population Summary	5
<b>Total Undergraduate Enrollment</b>	<b>6</b>
By Class Level	7
By Gender	8
By Ethnicity	9
By Major Field of Study	10
By Major Department	11
By College	12
<b>Academic Profile: Undergraduates</b>	<b>13</b>
Total Undergraduate Population Summary	14
By Class Level	15
By Major Field of Study	16
<b>New Students</b>	<b>17</b>
New Student Enrollments	18
<b>First-Time Freshmen</b>	<b>19</b>
Applicants, Admits & Registered	20
By Gender	21
By Ethnicity	22
By Major Field of Study	23
By Major Department at Time of Admission	24
By College & Home Location	25
By 1st Generation College Status & Income Group & Athletic Status	26
Major Feeder High Schools	27
<b>High School Grades and SAT Scores</b>	<b>28</b>
Indicators of Academic Preparation	29
High School GPA by Gender, Ethnicity, Major Field of Study, Home Location, 1st Generation College Status & Income Group	30
SAT I Scores by Gender, Ethnicity, Major Field of Study, Home Location, 1st Generation College Status & Income Group	31
SAT II Scores by Gender, Ethnicity, Major Field of Study, Home Location, 1st Generation College Status & Income Group	32
UCSD/UC Systemwide Comparison	33
<b>New Transfer Students</b>	<b>34</b>
Applicants, Admits & Registered	35
By Gender	36
By Ethnicity	37
By Major Field of Study	38
By Transfer Institution & Home Location	39
By Undergraduate College	40
By 1st Generation College Status & Income Group & Athletic Status	41
Major Feeder Transfer Institutions	42
<b>New Transfer Student Academic Preparation</b>	<b>43</b>
Indicators of Academic Preparation	44
<b>Degrees Conferred</b>	<b>45</b>
All Degree Types	46
Bachelor Degrees by Gender	47
Bachelor Degrees by Ethnicity	48
Bachelor Degrees by Major Field of Study & College	49
Bachelor Degrees by First Generation College Status & Income	50
Time-to-Degree/Academic Performance for Students Who Entered UCSD from High School	51
Time-to-Degree/Academic Performance for Students Who Entered UCSD from a Two-Year Community College	52
<b>Appendix: Undergraduate Major Fields of Study/ Academic Departments</b>	<b>53</b>



**Total  
Campus  
Enrollment**

# ■ TOTAL CAMPUS ENROLLMENT

More than twenty-five thousand students are enrolled at UCSD - showing an increase of 42% over the past decade. UCSD enrolled a record number of 20,339 undergraduate students, and 4,939 graduate and medical students.

Table 1.

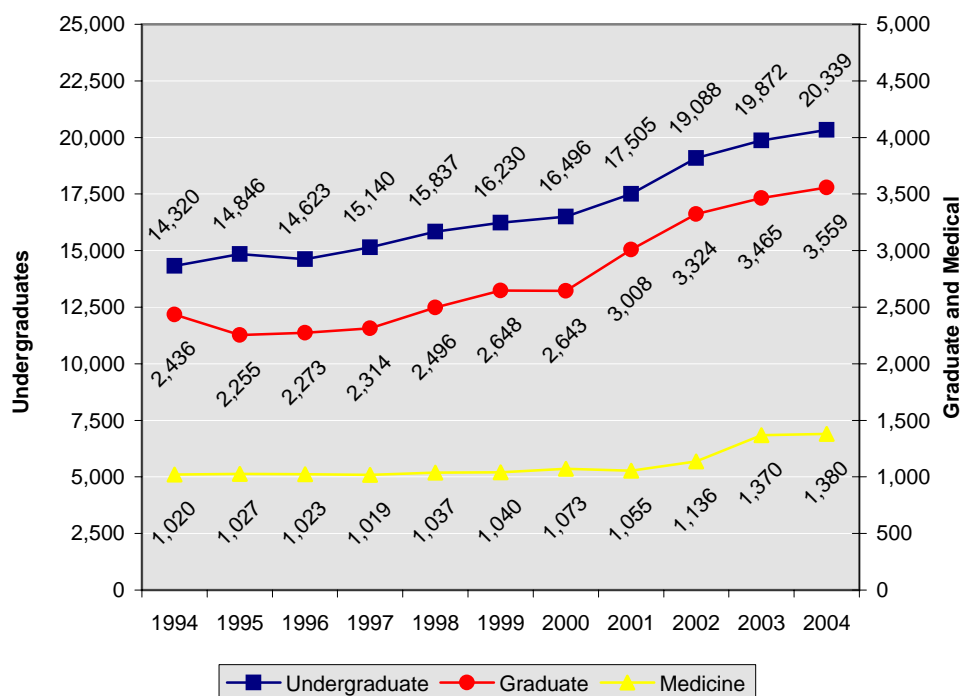
## Total Campus Enrollment: The Past Decade Fall Quarter

UCSD Enrollment	1994	1999	2000	2001	2002	2003	2004	10 Year Δ
• Undergraduate	14,320	16,230	16,496	17,505	19,088	19,872	20,339	+42%
• Graduate *	2,436	2,648	2,643	3,008	3,324	3,465	3,559	+46%
• Medicine	1,020	1,040	1,073	1,055	1,136	1,370	1,380	+35%
<b>Total Campus Enrollment</b>	<b>17,776</b>	<b>19,918</b>	<b>20,212</b>	<b>21,568</b>	<b>23,548</b>	<b>24,707</b>	<b>25,278</b>	<b>+42%</b>

\* includes Teacher Education Program.

Figure 1.

## Total Campus Enrollment: The Past Decade Fall Quarter





**Total  
Undergraduate  
Enrollment**

# ■ Undergraduate Enrollment

Undergraduate enrollments have increased by 42% over the past ten years. The majority of undergraduate students (63%) at UCSD are upper division students.

Table 2.

## Undergraduate Enrollment by Class Level Fall Quarter

The Undergraduates	1994	1999	2000	2001	2002	2003	2004	10 Year Δ
• Lower Division	<b>5,841</b> 41%	<b>6,811</b> 42%	<b>6,557</b> 40%	<b>7,214</b> 41%	<b>8,059</b> 42%	<b>7,847</b> 39%	<b>7,581</b> 37%	+30%
Freshman	3,284 23%	3,651 22%	3,366 20%	4,185 24%	4,350 23%	3,973 20%	3,954 19%	+20%
Sophomore	2,557 18%	3,160 19%	3,191 19%	3,029 17%	3,709 19%	3,874 19%	3,627 18%	+42%
• Upper Division	<b>8,479</b> 59%	<b>9,419</b> 58%	<b>9,939</b> 60%	<b>10,291</b> 59%	<b>11,029</b> 58%	<b>12,025</b> 61%	<b>12,758</b> 63%	+50%
Junior	3,887 27%	4,319 27%	4,640 28%	4,705 27%	4,920 26%	5,523 28%	5,560 27%	+43%
Senior	4,592 32%	5,100 31%	5,299 32%	5,586 32%	6,109 32%	6,502 33%	7,198 35%	+57%
<b>Total UG Enrollment</b>	<b>14,320</b>	<b>16,230</b>	<b>16,496</b>	<b>17,505</b>	<b>19,088</b>	<b>19,872</b>	<b>20,339</b>	+42%

Figure 2.

## Total Undergraduate Enrollment Trends by Class Level Fall Quarter

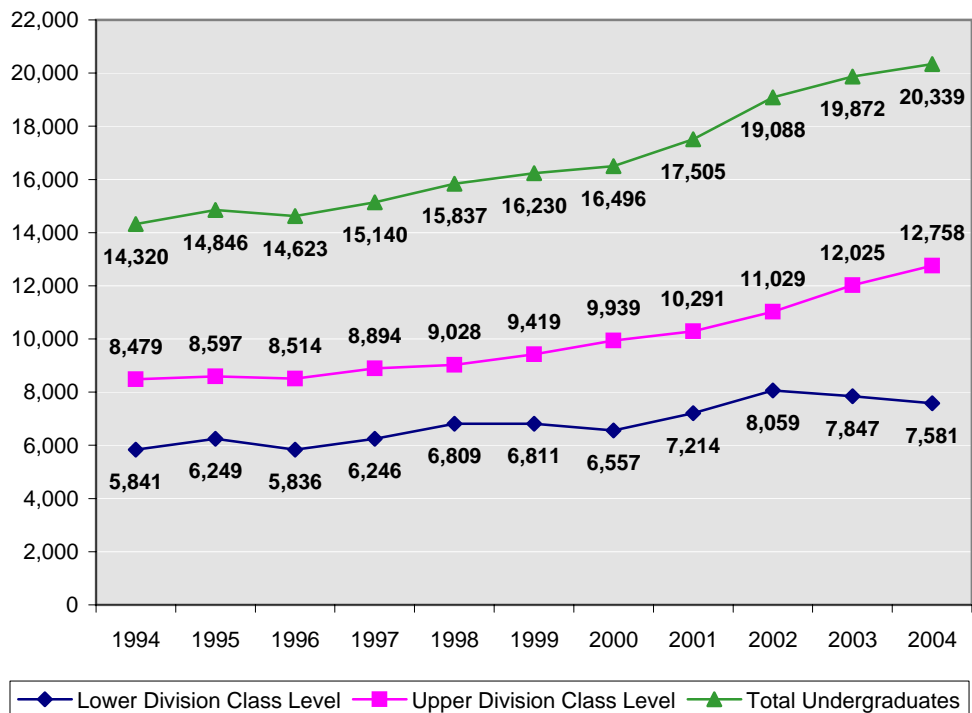




Table 3.

**Undergraduates by Gender** Fall Quarter

Gender	1994	1999	2000	2001	2002	2003	2004	10 Year Δ
• Female	7,080 49%	8,471 52%	8,605 52%	9,105 52%	9,913 52%	10,359 52%	10,606 52%	+50%
• Male	7,240 51%	7,759 48%	7,891 48%	8,400 48%	9,175 48%	9,513 48%	9,733 48%	+34%
<b>Total UG Enrollment</b>	<b>14,320</b>	<b>16,230</b>	<b>16,496</b>	<b>17,505</b>	<b>19,088</b>	<b>19,872</b>	<b>20,339</b>	<b>+42%</b>

Women  
continue to  
outnumber  
men at UCSD  
by  
approximately  
four percent.

Figure 3.

**Undergraduate Enrollment by Gender** Fall Quarter

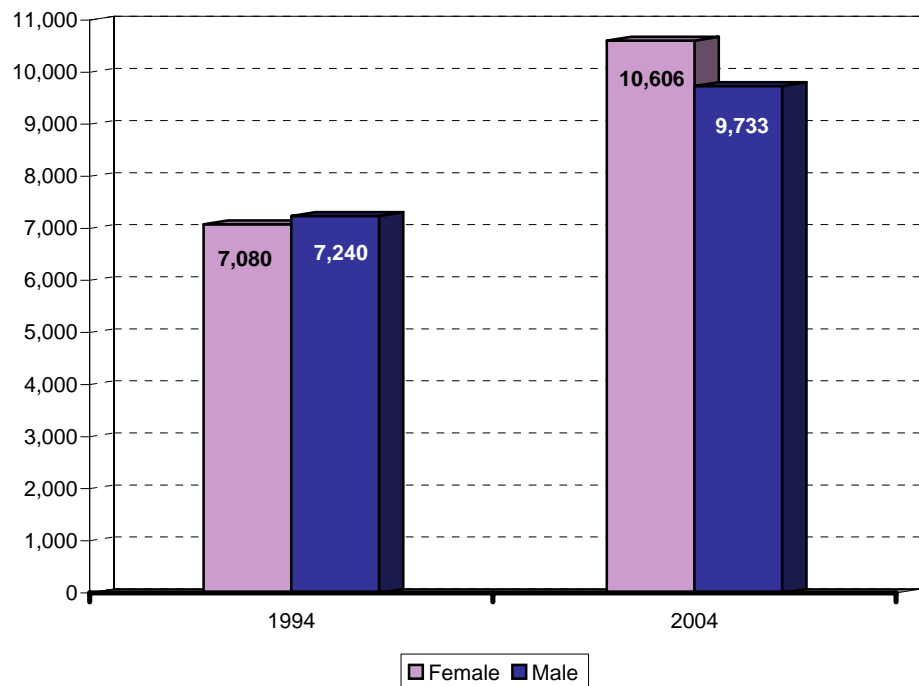


Table 4.

**Undergraduates by Ethnicity** Fall Quarter

Ethnicity	1994	1999	2000	2001	2002	2003	2004	10 Year Δ
• African-American	355 2%	257 2%	224 1%	211 1%	219 1%	244 1%	273 1%	-23%
• Asian	3,401 24%	4,802 30%	4,948 30%	5,554 32%	6,426 34%	6,851 34%	7,221 36%	+112%
• Mexican-American	1,341 9%	1,226 8%	1,282 8%	1,322 8%	1,475 8%	1,584 8%	1,655 8%	+23%
• Filipino	683 5%	869 5%	850 5%	896 5%	956 5%	979 5%	1,017 5%	+49%
• Latino	344 2%	350 2%	374 2%	375 2%	428 2%	470 2%	481 2%	+40%
• Native-American	133 1%	119 1%	99 1%	81 0%	91 0%	84 0%	85 0%	-36%
• Caucasian	6,743 47%	6,403 39%	6,429 39%	6,652 38%	6,981 37%	7,048 35%	6,855 34%	+2%
• Other/Undeclared	1,320 9%	2,204 14%	2,290 14%	2,414 14%	2,512 13%	2,612 13%	2,752 14%	+108%
<b>Total UG Enrollment</b>	<b>14,320</b>	<b>16,230</b>	<b>16,496</b>	<b>17,505</b>	<b>19,088</b>	<b>19,872</b>	<b>20,339</b>	<b>+42%</b>

Compared to 1994, there has been an increase in the proportion of Asian students and those identified as Other/ Undeclared among the undergraduate population. At the same time, there has been a decrease in the proportion of African-American, Mexican-American and Caucasian students.

Figure 4.

**Undergraduate Enrollment by Ethnicity** Fall Quarter

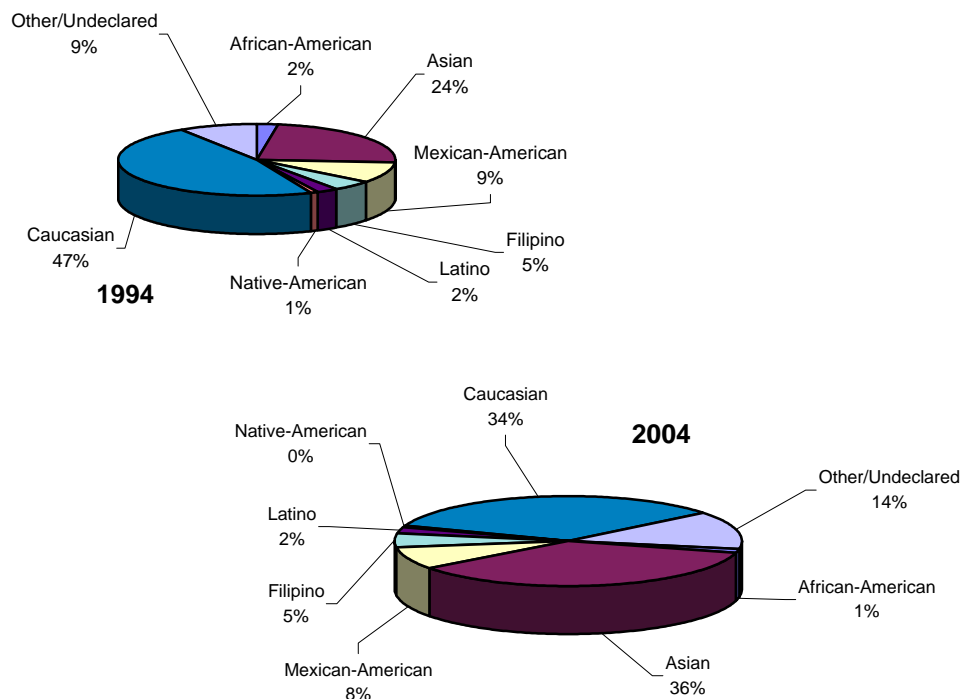


Table 5.

**Undergraduates by Major Field of Study** Fall Quarter

Major Field of Study	1994	1999	2000	2001	2002	2003	2004	10 Year Δ
• Arts	454 3%	695 4%	800 5%	931 5%	1,047 5%	1,070 5%	945 5%	+108%
• Humanities	943 7%	803 5%	748 5%	740 4%	806 4%	875 4%	905 4%	-4%
• Engineering	2,519 18%	3,136 19%	3,320 20%	3,855 22%	4,284 22%	4,331 22%	4,273 21%	+70%
• Science/Math	4,479 31%	4,769 29%	4,444 27%	4,254 24%	4,405 23%	4,493 23%	4,944 24%	+10%
• Social Science	4,037 28%	5,067 31%	5,487 33%	5,830 33%	6,177 32%	6,515 33%	6,928 34%	+72%
• Undec./Special	1,888 13%	1,760 11%	1,697 10%	1,895 11%	2,369 12%	2,588 13%	2,344 12%	+24%
<b>Total UG Enrollment</b>	<b>14,320</b>	<b>16,230</b>	<b>16,496</b>	<b>17,505</b>	<b>19,088</b>	<b>19,872</b>	<b>20,339</b>	<b>+42%</b>

The Social Sciences continue to be the most popular undergraduate field of study at UCSD.

Figure 5.

**Undergraduate Enrollment by Major Field of Study** Fall Quarter

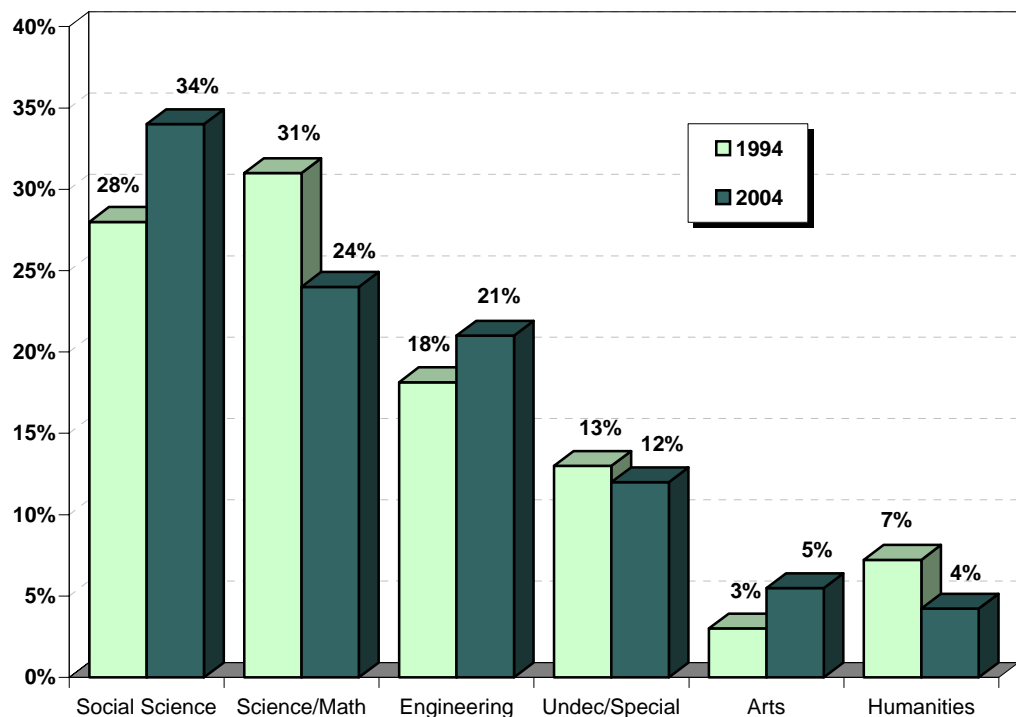


Table 6.

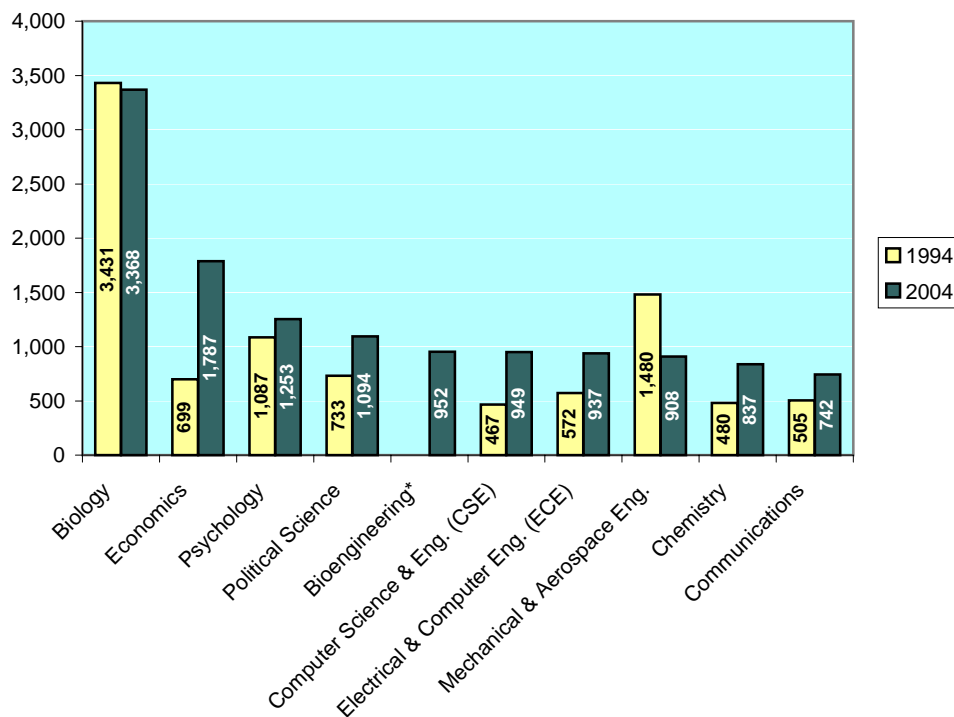
**Undergraduates by Major Department** **Fall Quarter**  
**Ten Most Populous Departments**

1994			2004		
Major Department	n	%	Major Department	n	%
Biology	3,431	24.0%	Biology	3,368	16.6%
Applied Mechanics & Eng. (AMES)	1,480	10.3%	Economics	1,787	8.8%
Psychology	1,087	7.6%	Psychology	1,253	6.2%
Political Science	733	5.1%	Political Science	1,094	5.4%
Economics	699	4.9%	Bioengineering*	952	4.7%
Electrical & Computer Eng. (ECE)	572	4.0%	Computer Science & Eng. (CSE)	949	4.7%
Communications	505	3.5%	Electrical & Computer Eng. (ECE)	937	4.6%
Chemistry	480	3.4%	Mechanical & Aerospace Eng.	908	4.5%
Computer Science & Eng. (CSE)	467	3.3%	Chemistry	837	4.1%
History	372	2.6%	Communications	742	3.6%
<b>Other Departments</b>	<b>2,612</b>	<b>18.2%</b>	<b>Other Departments</b>	<b>5,173</b>	<b>25.4%</b>
<b>Undeclared Majors</b>	<b>1,882</b>	<b>13.1%</b>	<b>Undeclared Majors</b>	<b>2,339</b>	<b>11.5%</b>
<b>TOTAL</b>	<b>14,320</b>	<b>100.0%</b>	<b>TOTAL</b>	<b>20,339</b>	<b>100.0%</b>

Similar to 1994, the most popular undergraduate major at UCSD in 2004 is Biology. Economics has moved up three spots and is currently the second most popular major.

Figure 6.

**Ten Most Populous Departments** **Fall Quarter**



\* No equivalent department in 1994.

Table 7.

**Undergraduates by College** Fall Quarter

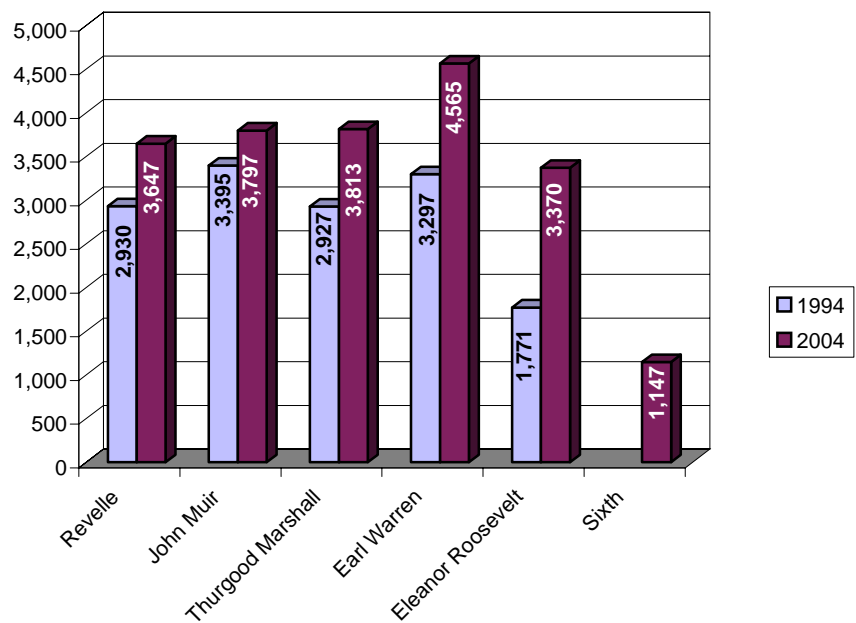
College	1994	1999	2000	2001	2002	2003	2004	10 Year Δ
• Revelle	2,930 20%	3,364 21%	3,348 21%	3,504 21%	3,765 22%	3,697 19%	3,647 18%	+24%
• John Muir	3,395 24%	3,440 22%	3,503 22%	3,707 22%	3,833 22%	3,866 20%	3,797 19%	+12%
• Thurgood Marshall	2,927 20%	3,326 21%	3,342 21%	3,560 22%	3,794 22%	3,856 20%	3,813 19%	+30%
• Earl Warren	3,297 23%	3,816 24%	3,856 24%	4,046 25%	4,388 25%	4,559 24%	4,565 22%	+38%
• Eleanor Roosevelt	1,771 12%	2,284 14%	2,447 15%	2,688 16%	3,028 17%	3,232 17%	3,370 17%	+90%
• Sixth*	NA NA	NA NA	NA NA	NA NA	280 (1%)	662 3%	1,147 6%	NA
<b>Total UG Enrollment</b>	<b>14,320</b>	<b>15,837</b>	<b>16,230</b>	<b>16,496</b>	<b>17,505</b>	<b>19,088</b>	<b>20,339</b>	

\* Note: Sixth College enrolled its first class of undergraduates in 2002.

With more than 4,500 students, Earl Warren College enrolls the largest number of students of the six undergraduate colleges.

Figure 7.

**Undergraduate Enrollments by College** Fall Quarter





**Academic  
Profile:  
Undergraduates**

# ■ Academic Profile: Total Undergraduate Population

Table 8.

## Academic Profile Summary Fall Quarter

Undergraduates	1994	1999	2000	2001	2002	2003	2004
• UCSD GPA	2.97	2.98	3.00	3.02	3.02	3.02	3.03
GPA $\geq$ 3.5	15.5%	16.7%	17.0%	18.2%	18.3%	19.0%	19.0%
3.0 $\leq$ GPA < 3.5	34.7%	34.0%	35.3%	35.5%	35.3%	35.4%	36.8%
2.5 $\leq$ GPA < 3.0	32.0%	31.4%	31.2%	30.8%	30.5%	30.0%	29.2%
2.0 $\leq$ GPA < 2.5	14.6%	14.9%	13.9%	13.1%	13.4%	12.9%	12.7%
GPA < 2.0	3.2%	3.0%	2.6%	2.4%	2.4%	2.7%	2.4%

The mean grade point average (GPA) for all undergraduates at UCSD is 3.03 (B); 19% earned a GPA of 3.50 or higher.

Figure 8.

## Proportion of Student Body within GPA Ranges Fall Quarter

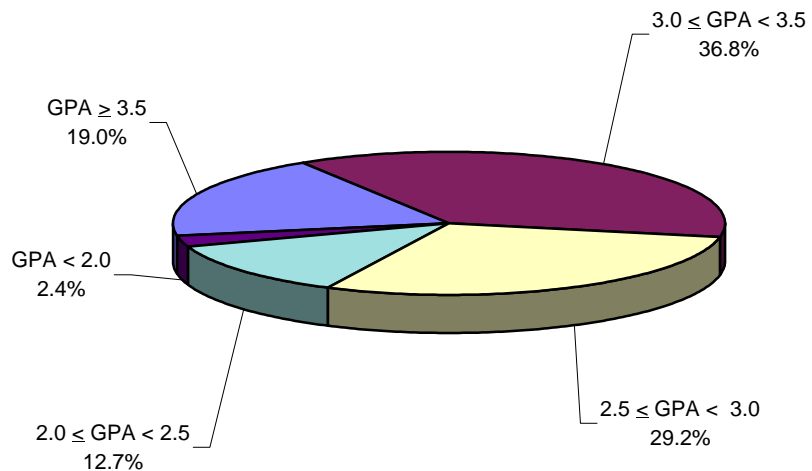


Table 9.

**Academic Profile by Class Level** **Fall Quarter**

Undergraduates	1994	1999	2000	2001	2002	2003	2004
• Freshman* (N = 2,772)							
Freshman GPA	2.73	2.92	2.91	2.96	2.94	2.92	2.88
GPA $\geq$ 3.5	13.8%	20.9%	20.4%	23.6%	21.4%	22.1%	20.6%
3.0 $\leq$ GPA < 3.5	22.0%	32.7%	32.2%	32.3%	31.9%	31.9%	30.7%
2.5 $\leq$ GPA < 3.0	26.6%	22.9%	23.6%	23.4%	25.4%	23.3%	23.9%
2.0 $\leq$ GPA < 2.5	24.4%	15.3%	15.0%	13.2%	13.9%	13.7%	14.1%
GPA < 2.0	13.3%	8.2%	8.8%	7.4%	7.5%	9.0%	10.6%
• Sophomore (N = 3,247)							
Sophomore GPA	2.97	2.98	2.99	3.02	3.01	3.00	2.99
GPA $\geq$ 3.5	14.9%	17.0%	16.7%	18.8%	17.0%	17.4%	15.7%
3.0 $\leq$ GPA < 3.5	34.5%	32.9%	34.6%	35.8%	35.8%	36.0%	36.2%
2.5 $\leq$ GPA < 3.0	32.5%	32.2%	32.3%	29.4%	32.0%	29.8%	31.2%
2.0 $\leq$ GPA < 2.5	15.2%	14.9%	14.2%	13.0%	13.3%	14.2%	14.3%
GPA < 2.0	2.8%	3.1%	2.3%	2.9%	2.0%	2.6%	2.7%
• Junior (N = 4,456)							
Junior GPA	2.95	2.99	3.00	3.03	3.02	3.04	3.05
GPA $\geq$ 3.5	14.7%	16.3%	16.9%	18.4%	18.9%	19.2%	19.8%
3.0 $\leq$ GPA < 3.5	34.6%	35.9%	36.1%	35.9%	36.3%	37.3%	37.7%
2.5 $\leq$ GPA < 3.0	32.5%	31.6%	31.6%	31.2%	29.4%	29.9%	28.5%
2.0 $\leq$ GPA < 2.5	14.3%	13.3%	12.8%	12.5%	12.5%	11.2%	12.0%
GPA < 2.0	3.9%	2.9%	2.7%	2.1%	2.8%	2.4%	2.0%
• Senior (N = 7,170)							
Senior GPA	3.02	3.01	3.03	3.03	3.04	3.05	3.07
GPA $\geq$ 3.5	16.6%	17.8%	17.9%	18.3%	19.2%	20.5%	20.6%
3.0 $\leq$ GPA < 3.5	36.5%	35.2%	36.1%	36.4%	35.8%	35.5%	37.9%
2.5 $\leq$ GPA < 3.0	32.2%	30.7%	30.7%	31.2%	30.3%	30.0%	28.5%
2.0 $\leq$ GPA < 2.5	13.1%	14.4%	13.7%	12.5%	13.2%	12.0%	11.6%
GPA < 2.0	1.7%	1.9%	1.7%	1.6%	1.5%	2.0%	1.5%
<b>Undergraduate GPA</b>	<b>2.97</b>	<b>2.98</b>	<b>3.00</b>	<b>3.02</b>	<b>3.02</b>	<b>3.02</b>	<b>3.03</b>

There is a positive relationship between student class level and grade point average; as students advance in standing their grade point average generally increases.

\* Note: Freshman GPA data reflect grades for Winter quarter of first year enrolled.



Table 10.

**Academic Profile by Major Field of Study**

Fall Quarter

Undergraduates	1994	1999	2000	2001	2002	2003	2004
• Arts (N = 800)							
Arts GPA	3.12	3.06	3.10	3.12	3.17	3.17	3.19
GPA $\geq$ 3.5	19.4%	18.5%	18.7%	20.9%	24.3%	25.2%	24.5%
3.0 $\leq$ GPA < 3.5	46.1%	39.8%	45.3%	44.5%	45.2%	42.0%	45.8%
2.5 $\leq$ GPA < 3.0	24.6%	29.8%	25.8%	24.6%	22.3%	24.4%	23.1%
2.0 $\leq$ GPA < 2.5	9.2%	9.8%	8.7%	9.1%	7.6%	7.2%	6.0%
GPA < 2.0	0.8%	2.1%	1.6%	1.0%	0.6%	1.2%	0.6%
• Humanities (N = 728)							
Humanities GPA	3.07	3.10	3.09	3.14	3.13	3.15	3.15
GPA $\geq$ 3.5	17.2%	23.7%	22.1%	34.9%	23.9%	23.6%	26.0%
3.0 $\leq$ GPA < 3.5	43.7%	37.8%	38.0%	39.9%	41.0%	43.1%	41.5%
2.5 $\leq$ GPA < 3.0	27.9%	25.1%	28.7%	27.0%	24.5%	24.7%	22.9%
2.0 $\leq$ GPA < 2.5	8.7%	10.8%	8.8%	6.6%	8.6%	7.9%	7.6%
GPA < 2.0	2.5%	2.6%	2.5%	1.6%	2.0%	0.7%	2.1%
• Engineering (N = 3,317)							
Engineering GPA	2.97	2.97	2.95	2.99	2.97	2.99	3.00
GPA $\geq$ 3.5	15.9%	16.1%	15.6%	16.9%	16.7%	18.0%	18.2%
3.0 $\leq$ GPA < 3.5	33.2%	31.8%	31.4%	32.1%	31.0%	31.8%	32.3%
2.5 $\leq$ GPA < 3.0	33.5%	34.4%	34.6%	34.5%	34.1%	34.0%	32.8%
2.0 $\leq$ GPA < 2.5	14.4%	15.1%	15.7%	14.5%	16.0%	13.7%	14.5%
GPA < 2.0	2.7%	2.5%	2.8%	2.0%	2.1%	2.5%	2.1%
• Science/Math (N = 3,715)							
Science/Math GPA	2.97	2.98	2.99	3.02	3.02	3.02	3.03
GPA $\geq$ 3.5	16.5%	18.5%	18.8%	20.0%	19.7%	20.2%	19.6%
3.0 $\leq$ GPA < 3.5	31.8%	30.8%	31.6%	32.9%	33.5%	32.9%	35.0%
2.5 $\leq$ GPA < 3.0	32.7%	32.0%	31.6%	30.7%	30.3%	29.8%	30.0%
2.0 $\leq$ GPA < 2.5	15.8%	15.6%	15.2%	13.8%	13.8%	14.6%	13.4%
GPA < 2.0	3.2%	3.1%	2.8%	2.7%	2.6%	2.6%	2.0%
• Social Science (N = 5,623)							
Social Science GPA	2.96	2.97	3.01	3.00	3.02	3.01	3.03
GPA $\geq$ 3.5	13.6%	14.3%	15.5%	16.4%	17.2%	17.8%	18.0%
3.0 $\leq$ GPA < 3.5	36.2%	37.4%	38.5%	37.4%	37.6%	37.1%	39.0%
2.5 $\leq$ GPA < 3.0	32.6%	30.4%	30.6%	30.5%	29.9%	29.3%	28.6%
2.0 $\leq$ GPA < 2.5	14.3%	14.9%	13.2%	13.3%	12.6%	12.5%	11.8%
GPA < 2.0	3.3%	2.9%	2.2%	2.3%	2.6%	3.2%	2.5%
<b>Undergraduate GPA</b>	<b>2.97</b>	<b>2.98</b>	<b>3.00</b>	<b>3.02</b>	<b>3.02</b>	<b>3.02</b>	<b>3.03</b>

Grade point averages vary by major field of study with the highest average GPAs generally associated with Arts and Humanities majors.



**New  
Students**

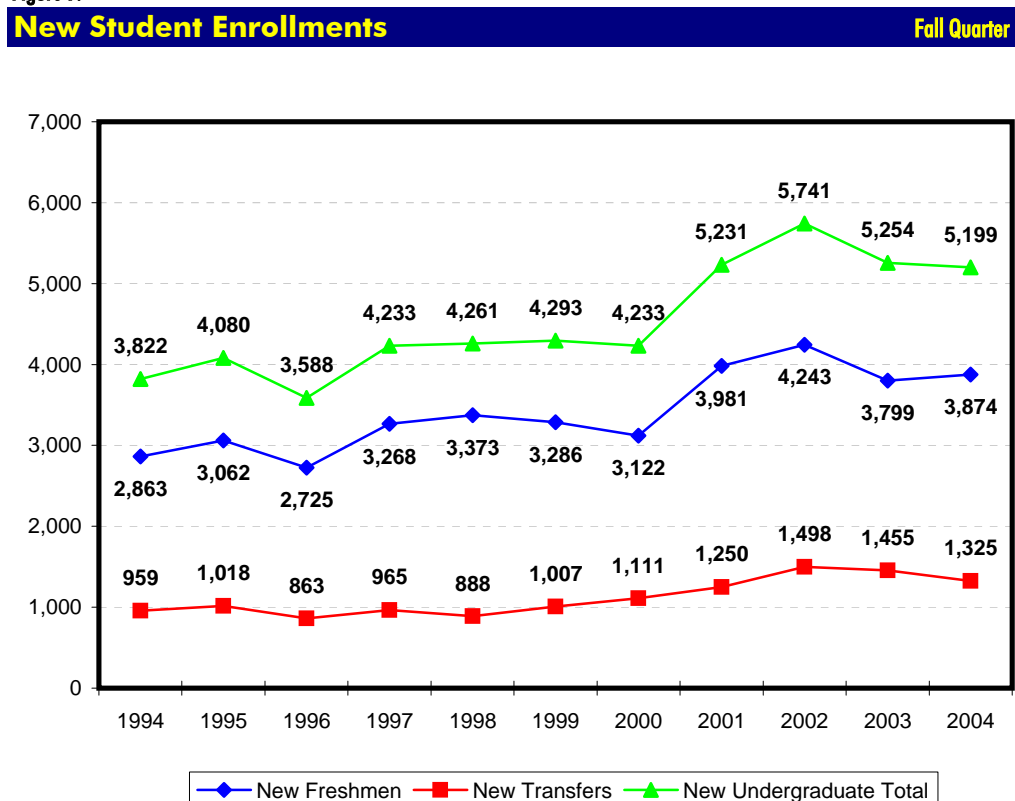
# ■ New Students: The Past Decade

Table 11.

New Student Enrollments								Fall Quarter
New Students	1994	1999	2000	2001	2002	2003	2004	10 Year Δ
• First-Time Freshmen	2,863	3,286	3,122	3,981	4,243	3,799	3,874	+35%
	75%	77%	74%	76%	74%	72%	75%	
• New Transfers	959	1,007	1,111	1,250	1,498	1,455	1,325	+38%
	25%	23%	26%	24%	26%	28%	25%	
<b>New Student Total</b>	<b>3,822</b>	<b>4,293</b>	<b>4,233</b>	<b>5,231</b>	<b>5,741</b>	<b>5,254</b>	<b>5,199</b>	<b>+36%</b>

New student enrollments have increased from 3,822 in 1994 to 5,199 in 2004, representing an overall increase of 36%. Of the new student enrollment, just over three-quarters (76%) are first-time freshmen.

Figure 9.





**First-Time  
Freshmen**

# ■ First-Time Freshmen

Over forty-one thousand high school students applied for admission to UCSD for Fall of 2004. Of these students, 42% were admitted to UCSD. A total of 3,874 (22%) of the admitted students registered for enrollment.

Table 12.

## Applicants, Admits & Registered Fall Quarter

First-Time Freshmen	1994	1999	2000	2001	2002	2003	2004	10 Year Δ
• Applicants	20,011	32,547	35,691	38,187	41,354	43,438	41,330	+107%
• Admits	12,763	13,251	13,718	16,493	17,092	17,618	17,269	+35%
Admit/App. Rate	64%	41%	38%	43%	41%	41%	42%	
• Registered	2,863	3,286	3,122	3,981	4,243	3,799	3,874	+35%
Reg./Admit Rate	22%	25%	23%	24%	25%	22%	22%	

Figure 10.

## Applicants, Admits & Registered Fall Quarter

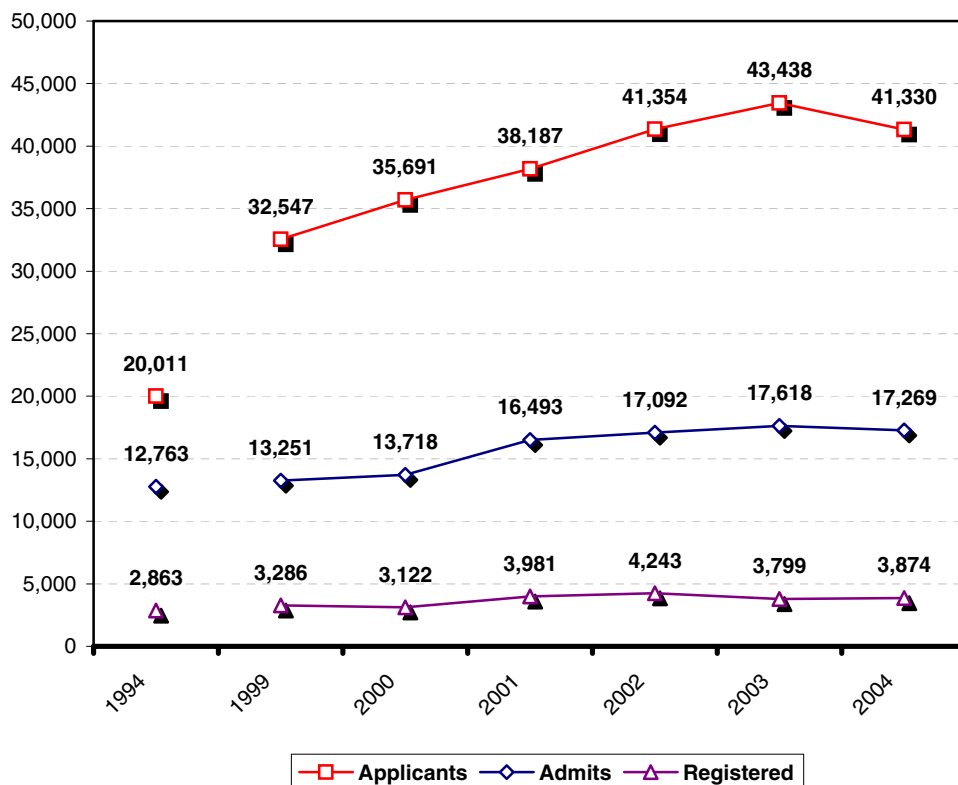


Table 13.

**First-Time Freshmen by Gender** Fall Quarter

Gender	1994	1999	2000	2001	2002	2003	2004	10 Year Δ
• Female	1,576 55%	1,793 55%	1,682 54%	2,152 54%	2,340 55%	2,130 56%	2,190 57%	+39%
• Male	1,287 45%	1,493 45%	1,440 46%	1,829 46%	1,903 45%	1,669 44%	1,684 43%	+31%
<b>Total</b>	<b>2,863</b>	<b>3,286</b>	<b>3,122</b>	<b>3,981</b>	<b>4,243</b>	<b>3,799</b>	<b>3,874</b>	<b>+35%</b>

With over 2,100 (57%) new female freshmen, women continue to represent the larger group of first-time freshmen at UCSD.

Figure 11.

**First-Time Freshmen by Gender** Fall Quarter

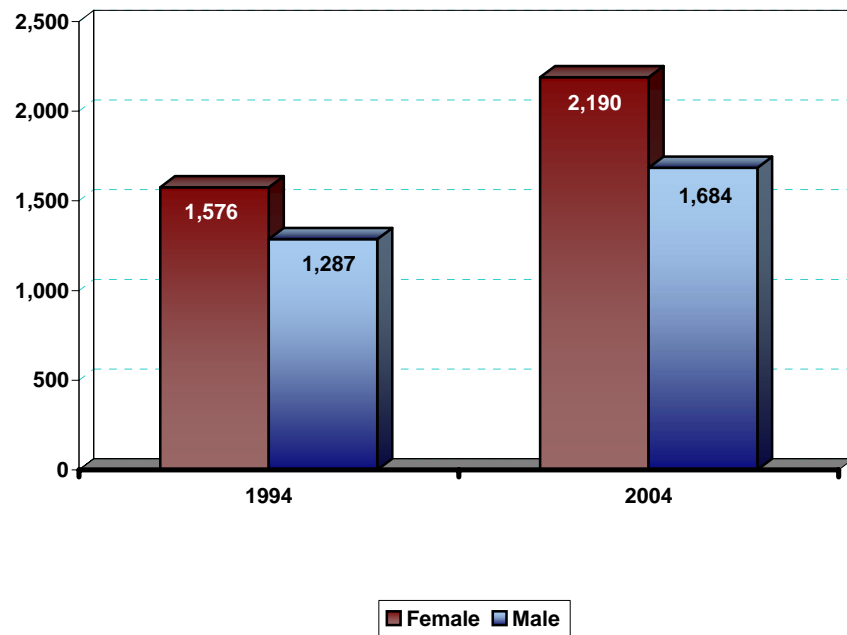


Table 14.

**First-Time Freshmen by Ethnicity** Fall Quarter

Ethnicity	1994	1999	2000	2001	2002	2003	2004	10 Year Δ
• African-American	69 2%	33 1%	28 1%	33 1%	48 1%	47 1%	57 1%	-17%
• Asian	839 29%	1,101 34%	986 32%	1,452 36%	1,502 35%	1,355 36%	1,519 39%	+81%
• Mexican-American	289 10%	227 7%	243 8%	254 6%	358 8%	322 8%	355 9%	+23%
• Filipino	151 5%	140 4%	161 5%	202 5%	199 5%	183 5%	216 6%	+43%
• Latino	56 2%	60 2%	67 2%	68 2%	98 2%	97 3%	91 2%	+63%
• Native-American	36 1%	12 0%	13 0%	9 0%	20 0%	14 0%	15 0%	-58%
• Caucasian	1,156 40%	1,328 40%	1,210 39%	1,472 37%	1,508 36%	1,315 35%	1,163 30%	+1%
• Other/Missing	267 9%	385 12%	414 13%	491 12%	510 12%	466 12%	458 12%	+72%
<b>Total</b>	<b>2,863</b>	<b>3,286</b>	<b>3,122</b>	<b>3,981</b>	<b>4,243</b>	<b>3,799</b>	<b>3,874</b>	<b>+35%</b>

Since 1994, the proportion of African-American, Mexican-American and Caucasian students has decreased. At the same time, the proportion of Asian and students classified as "Other" students has increased.

Figure 12.

**First-Time Freshmen by Ethnicity** Fall Quarter

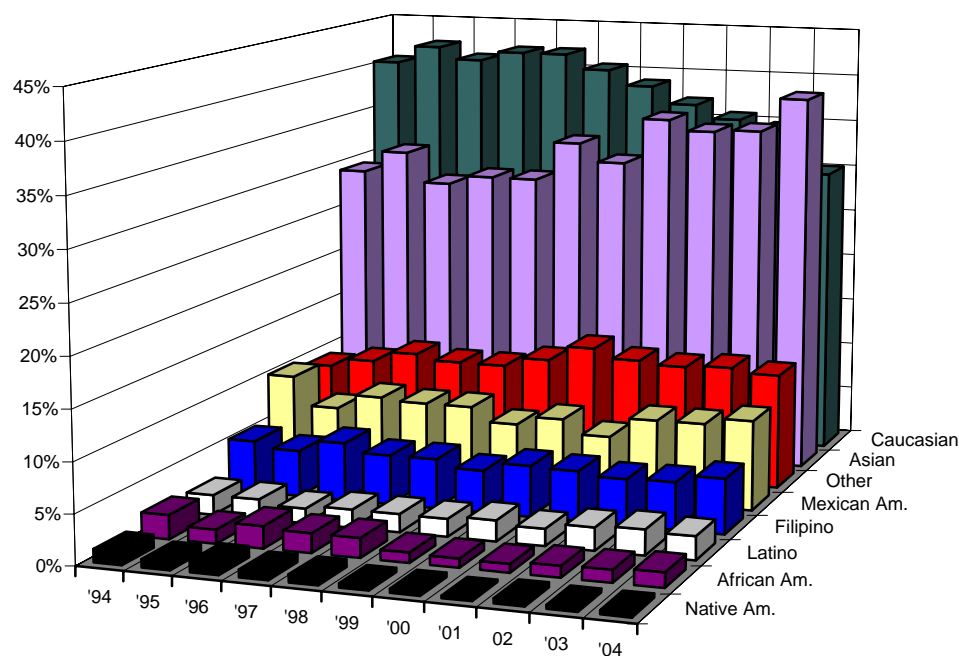


Table 15.

**First-Time Freshmen by Major Field of Study** Fall Quarter

Major Field of Study	1994	1999	2000	2001	2002	2003	2004	10 Year Δ
• Arts	35 1%	65 2%	86 3%	115 3%	143 3%	92 2%	81 2%	+131%
• Humanities	70 2%	90 3%	76 2%	102 3%	112 3%	98 3%	119 3%	+70%
• Engineering	531 19%	660 20%	713 23%	1,035 26%	900 21%	738 19%	778 20%	+47%
• Science/Math	840 29%	840 26%	752 24%	847 21%	932 22%	856 23%	976 25%	+16%
• Social Science	455 16%	630 19%	564 18%	697 18%	713 17%	619 16%	741 19%	+63%
• Undeclared/Missing/ Special	932 33%	1,001 30%	931 30%	1,185 30%	1,443 34%	1,396 37%	1,179 30%	+27%
<b>Total</b>	<b>2,863</b>	<b>3,286</b>	<b>3,122</b>	<b>3,981</b>	<b>4,243</b>	<b>3,799</b>	<b>3,874</b>	<b>+35%</b>

The most popular declared field of study in 2004 is Science/Math, followed by Engineering. Approximately, thirty percent of all new freshmen are considered undeclared upon admission.

Figure 13.

**First-Time Freshmen by Major Field of Study** Fall Quarter

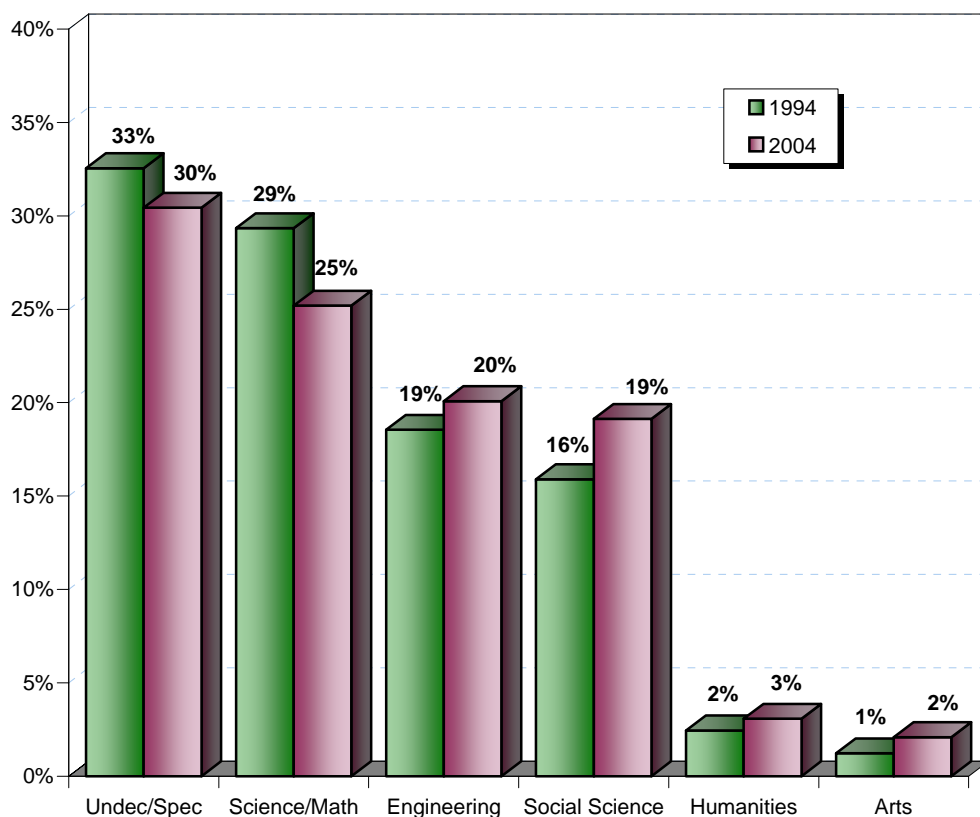




Table 16.

**First-Time Freshmen  
by Major Department at Time of Admission** **Fall Quarter**

1994			2004		
Major Department	n	%	Major Department	n	%
Biology	624	21.8%	Biology	634	16.4%
Applied Mechanics & Eng. (AMES)	358	12.5%	Bioengineering	268	6.9%
Psychology	141	4.9%	Chemistry	207	5.3%
Chemistry	99	3.5%	Mechanical & Aerospace Eng.	175	4.5%
Electrical & Computer Eng. (ECE)	91	3.2%	Psychology	168	4.3%
Economics	84	2.9%	Economics	164	4.2%
Computer Science & Eng. (CSE)	82	2.9%	Computer Science & Eng. (CSE)	155	4.0%
Political Science	82	2.9%	Political Science	151	3.9%
Communications	69	2.4%	Electrical & Computer Eng. (ECE)	86	2.2%
Physics	66	2.3%	Communications	77	2.0%
Mathematics	43	1.5%	Structural Engineering	74	1.9%
Literature	40	1.4%	International Studies	72	1.9%
Sociology	29	1.0%	Mathematics	70	1.8%
History	24	0.8%	Literature	69	1.8%
Visual Arts	22	0.8%	Visual Arts	49	1.3%
Anthropology	17	0.6%	Physics	42	1.1%
Ethnic Studies	12	0.4%	History	37	1.0%
Theatre	8	0.3%	Sociology	26	0.7%
Earth Sciences	8	0.3%	Chemical Engineering	20	0.5%
Cognitive Science	7	0.2%	Cognitive Science	18	0.5%
Music	5	0.2%	Music	16	0.4%
Philosophy	4	0.1%	Theatre	16	0.4%
Religious Studies	4	0.1%	Environmental Systems	16	0.4%
Urban Studies & Planning	4	0.1%	Anthropology	14	0.4%
<b>Subtotal</b>	<b>1,923</b>	<b>64.0%</b>	<b>Subtotal</b>	<b>2,624</b>	<b>67.7%</b>
<b>Other Majors</b>	<b>8</b>	<b>0.3%</b>	<b>Other Majors</b>	<b>71</b>	<b>1.8%</b>
<b>Undeclared Majors</b>	<b>932</b>	<b>32.6%</b>	<b>Undeclared Majors</b>	<b>1,179</b>	<b>30.4%</b>
<b>TOTAL</b>	<b>2,863</b>	<b>100.0%</b>	<b>TOTAL</b>	<b>3,874</b>	<b>100.0%</b>

Similar to 1994, Biology is the most popular declared major among new freshmen in 2004; approximately 16% of all new freshmen report majoring in Biology.

Table 17.

<b>First-Time Freshmen by College</b>								<b>Fall Quarter</b>
College	1994	1999	2000	2001	2002	2003	2004	10 Year $\Delta$
• Revelle	638 22%	795 24%	717 23%	848 21%	839 20%	695 18%	701 18%	+10%
• John Muir	658 23%	657 20%	586 19%	811 20%	763 18%	655 17%	646 17%	-2%
• Thurgood Marshall	591 21%	684 21%	598 19%	803 20%	748 18%	724 19%	670 17%	+13%
• Earl Warren	531 19%	570 17%	652 21%	776 19%	809 19%	625 16%	658 17%	+24%
• Eleanor Roosevelt	445 16%	580 18%	569 18%	743 19%	804 19%	706 19%	743 19%	+67%
• Sixth	NA NA	NA NA	NA NA	NA NA	280 7%	394 10%	456 12%	NA
<b>Total</b>	<b>2,863</b>	<b>3,286</b>	<b>3,122</b>	<b>3,981</b>	<b>4,243</b>	<b>3,799</b>	<b>3,874</b>	<b>+35%</b>

The largest number of first-time freshmen come to UCSD from the Los Angeles area, followed by the San Francisco region.

Table 18.

<b>First-Time Freshmen by Home Location</b>								<b>Fall Quarter</b>
Home Location	1994	1999	2000	2001	2002	2003	2004	10 Year $\Delta$
• San Diego	681 24%	594 18%	538 17%	699 18%	754 18%	630 17%	628 16%	-8%
• Los Angeles	1,292 45%	1,398 43%	1,416 45%	1,641 41%	1,852 44%	1,694 45%	1,806 47%	+40%
• San Francisco	491 17%	650 20%	587 19%	879 22%	923 22%	785 21%	806 21%	+64%
• Other CA	320 11%	492 15%	445 14%	543 14%	577 14%	508 13%	439 11%	+37%
• Out-of-State	59 2%	125 4%	97 3%	131 3%	66 2%	149 4%	111 3%	+88%
• Foreign	20 1%	27 1%	39 1%	88 2%	71 2%	33 1%	84 2%	+320%
<b>Total</b>	<b>2,863</b>	<b>3,286</b>	<b>3,122</b>	<b>3,981</b>	<b>4,243</b>	<b>3,799</b>	<b>3,874</b>	<b>+35%</b>

Table 19.

**First-Time Freshmen by 1st Generation College Status** Fall Quarter

College Status	1994	1999	2000	2001	2002	2003	2004	10 Year Δ
• First Generation	645 23%	773 24%	739 24%	858 22%	876 21%	1,072 28%	1,118 29%	+73%
• Not First Generation	2,218 77%	2,513 76%	2,383 76%	3,123 78%	3,367 79%	2,727 72%	2,756 71%	+24%
<b>Total</b>	<b>2,863</b>	<b>3,286</b>	<b>3,122</b>	<b>3,981</b>	<b>4,243</b>	<b>3,799</b>	<b>3,874</b>	<b>+35%</b>

The majority (71%) of new freshmen have at least one parent who has graduated from a two-year junior college or four-year college/university.

Table 20.

**First-Time Freshmen by Income Group** Fall Quarter

Income	1994	1999*	2000	2001	2002	2003	2004	10 Year Δ
• High (≥\$98,401)	507 18%	1,007 31%	704 23%	1,114 28%	1,054 25%	938 25%	796 21%	+57%
• Medium High (\$65,601 - \$98,400)	590 21%	518 16%	429 14%	584 15%	560 13%	479 13%	443 11%	-25%
• Medium Low (\$32,801 - \$65,600)	693 24%	597 18%	698 22%	842 21%	891 21%	810 21%	826 21%	+19%
• Low (≤\$32,800)	733 26%	601 18%	629 20%	659 17%	932 22%	825 22%	931 24%	+27%
• Missing	340 12%	563 17%	662 21%	782 20%	806 19%	747 20%	878 23%	+158%
<b>Total</b>	<b>2,863</b>	<b>3,286</b>	<b>3,122</b>	<b>3,981</b>	<b>4,243</b>	<b>3,799</b>	<b>3,874</b>	<b>+35%</b>

\* 1999 Income Categories:  
 High = Income ≥ \$87,001  
 Medium High = \$58,001-\$87,000  
 Medium Low = \$29,001-\$58,000  
 Low = Income ≤ \$29,000

Table 21.

**First-Time Freshmen by Athletic Status** Fall Quarter

College Status	1993	1999	2000	2001	2002	2003	2004*	10 Year Δ
• Athlete	NA	NA	NA	NA	234 6%	200 5%	NA	NA
• Non-Athlete	NA	NA	NA	NA	4,009 94%	3,599 95%	NA	NA
<b>Total</b>	<b>2,863</b>	<b>3,286</b>	<b>3,122</b>	<b>3,981</b>	<b>4,243</b>	<b>3,799</b>	<b>3,874</b>	<b>+35%</b>

\* 2004 Athlete data not available until Winter 2005 Quarter.


Table 22.

**Major\* Feeder High Schools for First-time Freshmen** Fall Quarter

High School	City	Number from H.S. Registered at UCSD in Fall 2004	Percent of UCSD's Total Freshman Enrollment	Average H.S. GPA of Registered Freshmen	Average SAT I of Registered Freshmen	Average SAT II of Registered Freshmen	High School Quintile Rank
Arcadia High School	Arcadia	57	1.5%	3.89	1310	1324	First
Mission San Jose High School	Fremont	40	1.0%	3.88	1359	1387	First
Palos Verdes Penn. High School	Rolling Hills	39	1.0%	3.86	1346	1403	First
Monta Vista High School	Cupertino	33	0.9%	3.89	1374	1457	First
Lowell High School	San Francisco	32	0.8%	3.71	1320	1342	First
Diamond Bar High School	Diamond Bar	31	0.8%	3.95	1284	1298	First
Walnut High School	Walnut	28	0.7%	3.91	1295	1311	First
John A. Rowland High School	Rowland Heights	25	0.6%	3.85	1286	1295	Second
Lynbrook High School	San Jose	25	0.6%	3.91	1348	1385	First
Sunny Hills High School	Fullerton	25	0.6%	3.79	1348	1397	First
Troy High School	Fullerton	25	0.6%	3.75	1394	1442	First
West High School	Torrance	22	0.6%	3.83	1288	1326	First
Alhambra High School	Alhambra	21	0.5%	3.70	1246	1230	Third
Long Beach Polytechnic	Long Beach	21	0.5%	4.00	1232	1242	Second
San Gabriel High School	San Gabriel	21	0.5%	3.90	1190	1189	Fifth
Diamond Ranch High School	Pomona	20	0.5%	4.02	1145	1141	Fourth
Homestead High School	Cupertino	20	0.5%	3.96	1312	1381	First
North High School	Torrance	20	0.5%	4.06	1230	1233	Second
Saratoga High School	Saratoga	20	0.5%	3.91	1376	1401	First
Gretchen Whitney High School	Cerritos	19	0.5%	3.80	1357	1375	First
Mount Carmel High School	San Diego	19	0.5%	4.03	1266	1292	First
Rancho Bernardo High School	San Diego	19	0.5%	3.88	1284	1315	First
University High School	Irvine	19	0.5%	3.80	1353	1393	First
Mountain View High School	Mountain View	18	0.5%	4.05	1335	1355	First
Ruben S. Ayala Senior High School	Chino	18	0.5%	4.07	1259	1252	Second
Samuel F. B. Morse High School	San Diego	18	0.5%	4.04	1119	1141	Third
Glen A. Wilson High School	Hacienda Heights	17	0.4%	3.90	1322	1365	First
Granada Hills High School	Granada Hills	17	0.4%	3.93	1288	1300	First
Henry M. Gunn Senior High School	Palo Alto	17	0.4%	3.84	1341	1361	First
Junipero Serra High School	San Diego	17	0.4%	4.12	1128	1147	Second
Monte Vista High School	Danville	17	0.4%	4.04	1366	1386	First
Palo Alto Senior High School	Palo Alto	17	0.4%	3.84	1386	1428	First
South High School	Torrance	17	0.4%	3.81	1258	1301	First
Torrey Pines High School	San Diego	17	0.4%	4.09	1357	1374	First
<b>Subtotal (Number of High Schools = 34 )</b>		<b>791</b>	<b>20.4%</b>				
<b>Other High Schools (Number of High Schools = 828 )</b>		<b>3,083</b>	<b>79.6%</b>				
<b>Total (Number of High Schools = 862 )</b>		<b>3,874</b>	<b>100.0%</b>				

\* Seventeen or more students

Arcadia High School in the Los Angeles area and Mission San Jose High School in the San Jose area top the list of major feeder schools for the Fall 2004 freshman cohort.



**High School  
Grades and  
SAT Scores**

# Academic Preparation: A Decade of Change

Academic preparation, as measured by high school GPA and SAT scores, have improved over the past decade. The average SAT score in 2004 is 1257 compared to 1099 in 1994.

Table 23.

## Freshman Cohort by HS GPA and SAT Score Averages Fall Quarter

First-Time Freshmen	1994	1999	2000	2001	2002	2003 <sup>2</sup>	2004
• HS GPA <sup>1</sup>	3.80	3.98	3.99	3.95	3.94	3.96	3.96
• SAT I (Verbal & Math)	1108	1256	1259	1264	1239	1257	1242
• SAT II (English & Math)	1099	1241	1255	1262	1252	1258	1257

<sup>1</sup> GPAs may exceed 4.0 with credit given for honors courses.

<sup>2</sup> SAT I scores reflect the higher of ACT scores converted to SAT Scores.

Table 24.

## Freshman Cohort by Academic Indicator Ranges Fall Quarter

High School GPA Range	Percentage in Range		SAT I Composite Score Range	Percentage in Range	
	1994	2004		1994	2004
• 4.0 - High	34%	51%	• 1500 - 1600	<1%	2%
• 3.90 - 3.99	9%	14%	• 1300 - 1499	12%	36%
• 3.60 - 3.89	29%	28%	• 1200 - 1299	19%	29%
• 3.30 - 3.59	20%	7%	• 1000 - 1199	47%	26%
• Low - 3.29	8%	1%	• Low - 999	22%	6%
<b>Total</b>	<b>100%</b>	<b>100%</b>	<b>Total</b>	<b>100%</b>	<b>100%</b>

Number of Honors Courses: 10th & 11th Grade	Percentage in Range		Number of College Preparatory (A-G) Courses*	Percentage in Range	
	1994	2004		1994	2004
• More than 8	29%	5%	• More than 50	8%	15%
• 7 - 8	19%	9%	• 46 - 50	19%	26%
• 5 - 6	18%	18%	• 41 - 45	35%	39%
• 1 - 4	26%	52%	• 36 - 40	32%	17%
• 0	8%	16%	• 30 - 35	5%	2%
<b>Total</b>	<b>100%</b>	<b>100%</b>	<b>Total</b>	<b>100%</b>	<b>100%</b>

\* The G requirement went into effect in 2003.

Figure 14.

## Academic Preparation: 1993-2004 Comparison Fall Quarter

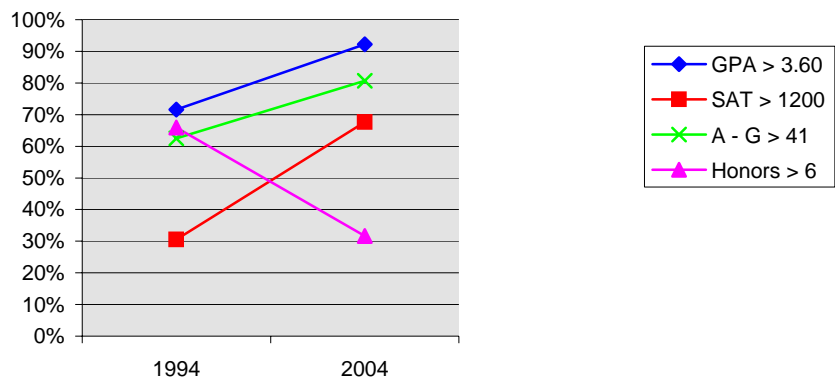


Table 25.

**High School GPA<sup>1</sup> by Gender, Ethnicity, Major Field of Study, Home Location, 1st Generation College Status & Income** Fall Quarter

First-Time Freshmen GPA	1994 Average	1999 <sup>2</sup> Average	2000 Average	2001 Average	2002 Average	2003 Average	2004 Average
• Gender							
Female	3.81	4.00	4.00	3.97	3.95	3.97	3.98
Male	3.79	3.94	3.97	3.93	3.91	3.93	3.93
• Ethnicity							
African-American	3.54	3.93	4.01	3.94	3.76	3.90	3.90
Asian	3.79	3.94	3.92	3.91	3.89	3.91	3.92
Mexican-American	3.55	3.96	3.98	3.95	3.87	3.88	3.89
Filipino	3.91	4.07	4.08	3.97	4.02	4.06	4.02
Latino	3.79	3.94	4.04	3.94	3.87	3.94	3.95
Native-American	3.62	3.95	3.96	3.93	4.02	4.12	4.02
Caucasian	3.87	4.01	4.03	4.00	3.99	4.01	4.02
• Major Field of Study							
Arts	3.78	3.96	3.94	3.93	3.90	3.93	3.91
Humanities	3.76	3.91	3.96	3.89	3.89	3.93	3.91
Engineering	3.88	4.00	4.03	3.99	3.99	4.02	3.99
Science/Math	3.85	4.03	4.02	3.99	3.99	3.99	4.01
Social Science	3.68	3.92	3.93	3.91	3.87	3.90	3.91
Undec./Special	3.78	3.96	3.97	3.93	3.91	3.93	3.94
• Home Location							
San Diego	3.87	4.05	4.04	3.99	3.97	3.99	4.00
Los Angeles	3.77	3.93	3.95	3.92	3.91	3.92	3.93
San Francisco	3.75	3.94	3.95	3.92	3.91	3.95	3.95
Other CA	3.85	4.01	4.06	4.02	4.01	4.03	4.04
Out of State	3.90	4.11	4.10	4.10	4.07	4.04	4.07
• First Generation College Status							
First Generation	3.75	3.96	3.95	3.93	3.88	3.90	3.91
Not First Generation	3.82	3.98	4.00	3.96	3.95	3.98	3.98
• Income Group							
High (≥\$98,401)	3.82	3.98	4.01	3.97	3.97	4.01	4.00
Med. High (\$65,601-\$98,400)	3.83	3.98	4.02	4.00	3.99	4.00	4.02
Med. Low (\$32,801-\$65,600)	3.85	3.99	3.98	3.92	3.91	3.94	3.94
Low (≤\$32,800)	3.72	3.93	3.94	3.90	3.86	3.86	3.88
Missing	NA	3.96	3.99	3.96	3.97	3.99	3.99
• Athletes							
Non-Athletes	NA	NA	NA	NA	NA	NA	3.96
Athletes	NA	NA	NA	NA	NA	NA	3.91
<b>Total</b>	<b>3.80</b>	<b>3.98</b>	<b>3.99</b>	<b>3.95</b>	<b>3.94</b>	<b>3.96</b>	<b>3.96</b>

Average high school GPAs vary somewhat by gender, ethnicity, and major field of study. For example, the average GPA of females is typically higher than that of males.

<sup>1</sup> GPAs may exceed 4.0 with credit given for honors courses.

<sup>2</sup> 1999 Income Categories: High = Income ≥ \$87,001 Medium High = \$58,001-\$87,000 Medium Low = \$29,001-\$58,000 Low = Income ≤ \$29,000

Table 26.

**SAT<sup>1</sup> I Scores by Gender, Ethnicity, Major Field of Study, Home Location, 1st Generation College Status & Income** Fall Quarter

First-Time Freshmen SAT I	1994 Average	1999 <sup>2</sup> Average	2000 Average	2001 Average	2002 Average	2003 Average	2004 Average
• Gender							
Female	1074	1228	1233	1239	1211	1228	1217
Male	1148	1290	1289	1293	1274	1293	1276
• Ethnicity							
African-American	926	1207	1165	1155	1107	1119	1109
Asian	1099	1252	1267	1273	1253	1266	1258
Mexican-American	952	1140	1129	1142	1092	1104	1091
Filipino	1073	1193	1192	1209	1162	1208	1184
Latino	1059	1162	1204	1201	1144	1197	1167
Native-American	1088	1260	1240	1273	1255	1264	1261
Caucasian	1161	1282	1284	1282	1270	1290	1272
• Major Field of Study							
Arts	1112	1273	1245	1246	1207	1239	1235
Humanities	1156	1268	1257	1276	1239	1257	1265
Engineering	1136	1290	1290	1297	1276	1295	1275
Science/Math	1101	1245	1247	1259	1228	1249	1240
Social Science	1064	1231	1235	1240	1220	1239	1222
Undec./Special	1117	1257	1260	1253	1236	1249	1234
• Home Location							
San Diego	1082	1195	1202	1208	1170	1197	1182
Los Angeles	1099	1257	1259	1266	1240	1250	1242
San Francisco	1168	1296	1296	1301	1288	1306	1291
Other CA	1090	1250	1262	1250	1237	1257	1215
Out of State	1186	1330	1318	1337	1325	1328	1321
• First Generation College Status							
First Generation	1009	1169	1174	1184	1174	1168	1160
Not First Generation	1136	1284	1285	1285	1256	1292	1276
• Income Group							
High (≥\$98,401)	1168	1294	1309	1303	1288	1311	1289
Med. High (\$65,601-\$98,400)	1145	1268	1272	1267	1260	1272	1251
Med. Low (\$32,801-\$65,600)	1119	1242	1247	1236	1217	1233	1219
Low (≤\$32,800)	1005	1161	1166	1195	1150	1166	1161
Missing	NA	1297	1298	1291	1288	1304	1303
• Athletes							
Non-Athletes	NA	NA	NA	NA	NA	NA	1243
Athletes	NA	NA	NA	NA	NA	NA	1237
<b>Total</b>	<b>1108</b>	<b>1256</b>	<b>1259</b>	<b>1264</b>	<b>1239</b>	<b>1257</b>	<b>1242</b>

The average SAT composite score of males is typically higher than that of females. Average SAT scores, in general, were slightly lower in 2004 than in the preceding year.

<sup>1</sup> SAT scores were "recentered" starting with the 1996 freshman cohort.

<sup>2</sup> 1999 Income Categories: High = Income ≥ \$87,001 Medium Low = \$29,001-\$58,000  
 Medium High = \$58,001-\$87,000 Low = Income ≤ \$29,000



Table 27.

**SAT<sup>1</sup> II Scores by Gender, Ethnicity, Major Field of Study, Home Location, 1st Generation College Status & Income** Fall Quarter

First-Time Freshmen SAT II	1994 Average	1999 <sup>2</sup> Average	2000 Average	2001 Average	2002 Average	2003 Average	2004 Average
• Gender							
Female	1082	1222	1234	1242	1231	1232	1238
Male	1121	1263	1280	1285	1278	1291	1281
• Ethnicity							
African-American	954	1170	1164	1149	1099	1102	1107
Asian	1087	1240	1261	1279	1269	1277	1276
Mexican-American	959	1112	1124	1131	1099	1089	1086
Filipino	1066	1172	1181	1193	1160	1199	1198
Latino	1066	1142	1192	1189	1147	1192	1173
Native-American	1082	1212	1216	1283	1244	1252	1249
Caucasian	1151	1267	1282	1277	1284	1283	1286
Other	1112	1279	1284	1279	1286	1298	1311
• Major Field of Study							
Arts	1096	1233	1247	1257	1214	1234	1239
Humanities	1145	1263	1246	1263	1257	1240	1270
Engineering	1130	1274	1288	1299	1284	1295	1285
Science/Math	1100	1232	1242	1255	1243	1256	1257
Social Science	1053	1213	1232	1235	1234	1233	1237
Undec./Special	1101	1242	1255	1250	1251	1253	1249
• Home Location							
San Diego	1070	1164	1191	1199	1182	1189	1188
Los Angeles	1091	1245	1252	1263	1249	1255	1256
San Francisco	1153	1288	1300	1316	1313	1321	1316
Other CA	1094	1229	1261	1240	1244	1238	1225
Out of State	1164	1311	1323	1325	1327	1305	1329
• First Generation College Status							
First Generation	1015	1148	1166	1178	1176	1165	1168
Not First Generation	1123	1270	1282	1285	1272	1294	1293
• Income Group							
High (≥\$98,401)	1148	1282	1310	1307	1307	1317	1308
Med. High (\$65,601-\$98,400)	1132	1249	1271	1267	1268	1267	1269
Med. Low (\$32,801-\$65,600)	1108	1224	1238	1226	1226	1229	1227
Low (≤\$32,800)	1015	1142	1161	1193	1161	1170	1174
Missing	NA	1288	1293	1291	1305	1304	1319
• Athletes							
Non-Athletes	NA	NA	NA	NA	NA	NA	1258
Athletes	NA	NA	NA	NA	NA	NA	1237
<b>Total</b>	<b>1099</b>	<b>1241</b>	<b>1255</b>	<b>1262</b>	<b>1252</b>	<b>1258</b>	<b>1257</b>

Given the high correlation between the SAT and SAT II, average SAT II scores typically show the same pattern of variation by student characteristics as the SAT.

<sup>1</sup> SAT scores were "recentered" starting with the 1996 freshman cohort.

<sup>2</sup> 1999 Income Categories: High = Income ≥ \$87,001 Medium Low = \$29,001-\$58,000  
 Medium High = \$58,001-\$87,000 Low = Income ≤ \$29,000

Table 28.

**Intercampus Comparison<sup>1</sup> of Average SAT I Composite Scores** Fall Quarter

UC Campus	1994	1995	1996 <sup>2</sup>	1997	1998	1999	2000	2001	2002 <sup>3</sup>	2003 <sup>3</sup>	2004 <sup>3</sup>
• Berkeley	1226	1218	1296	1311	1330	1305	1308	1293	1303	NA	NA
• Davis	1060	1070	1162	1162	1149	1165	1170	1163	1180	1184	1170
• Irvine	1011	1015	1121	1117	1126	1155	1171	1167	1179	1176	1209
• Los Angeles	1122	1136	1228	1239	1263	1262	1266	1256	1264	1278	1290
• Riverside	948	975	1046	1062	1061	1057	1056	1068	1057	1064	1080
• <b>San Diego</b>	<b>1104</b>	<b>1136</b>	<b>1221</b>	<b>1233</b>	<b>1240</b>	<b>1250</b>	<b>1259</b>	<b>1264</b>	<b>1239</b>	<b>1245</b>	<b>1242</b>
• Santa Barbara	997	1020	1116	1143	1158	1176	1181	1183	1172	1187	1184
• Santa Cruz	1034	1036	1134	1137	1135	1150	1143	1150	1138	1143	NA
<b>Systemwide</b>	<b>1079</b>	<b>1088</b>	<b>1180</b>	<b>1188</b>	<b>1196</b>	<b>1198</b>	<b>1199</b>	<b>1197</b>	<b>NA</b>	<b>NA</b>	<b>NA</b>

<sup>1</sup> Source: University of California, Frequency Distribution of College Entrance Examination Board (CEEB) Test Scores For Entering Freshmen CSS 050B.

<sup>2</sup> From 1996, recentered SAT scores are reported.

<sup>3</sup> 2002-2004 data based on personal contact with representatives for each UC Campus and are subject to change.

When compared on the basis of average SAT scores, UCSD ranks among the top three in the UC system.

Table 29.

**UCSD's Position Relative to Other UC Campuses on SAT I Scores** Fall Quarter

Rank	1994	1995	1996	1997	1998	1999	2000	2001	2002	2003	2004
• 1	UCB	UCB	UCB	UCB	UCB	UCB	UCB	UCB	UCB	UCB	UCB
• 2	UCLA	<b>UCSD</b>	UCLA	UCLA	UCLA	UCLA	UCLA	<b>UCSD</b>	UCLA	UCLA	UCLA
• 3	<b>UCSD</b>	UCLA	<b>UCSD</b>	<b>UCSD</b>	<b>UCSD</b>	<b>UCSD</b>	<b>UCSD</b>	UCLA	<b>UCSD</b>	<b>UCSD</b>	<b>UCSD</b>
• 4	UCD	UCD	UCD	UCD	UCSB	UCSB	UCSB	UCSB	UCD	UCSB	UCI
• 5	UCSC	UCSC	UCSC	UCSB	UCD	UCD	UCI	UCI	UCI	UCD	UCSB
• 6	UCI	UCI	UCI	UCSC	UCSC	UCI	UCD	UCD	UCSB	UCI	UCD
• 7	UCSB	UCSB	UCSB	UCI	UCI	UCSC	UCSC	UCSC	UCSC	UCSC	UCSC
• 8	UCR	UCR	UCR	UCR	UCR	UCR	UCR	UCR	UCR	UCR	UCR



**New  
Transfer  
Students**

# ■ New Transfer Students

Each year an increasing number of transfer students apply for admission to UCSD. This year also marks the third largest entering cohort with 1,325 newly enrolled transfer students, representing a 38% increase over the past decade.

Table 30.

## New Transfers: Applicants, Admits & Registered Fall Quarter

New Transfers	1994	1999	2000	2001	2002	2003	2004	10 Year Δ
• Applicants	4,103	5,351	6,375	7,041	7,890	8,854	9,825	+139%
• Admits	2,664	2,845	3,613	4,412	4,860	5,058	4,824	+81%
Admit/Applicant Rate	65%	53%	57%	63%	62%	57%	49%	
• Registered	959	1,007	1,111	1,250	1,498	1,455	1,325	+38%
Registered/Admit Rate	36%	35%	31%	28%	31%	29%	27%	

Figure 15.

## New Transfers: Applicants, Admits & Registered Fall Quarter

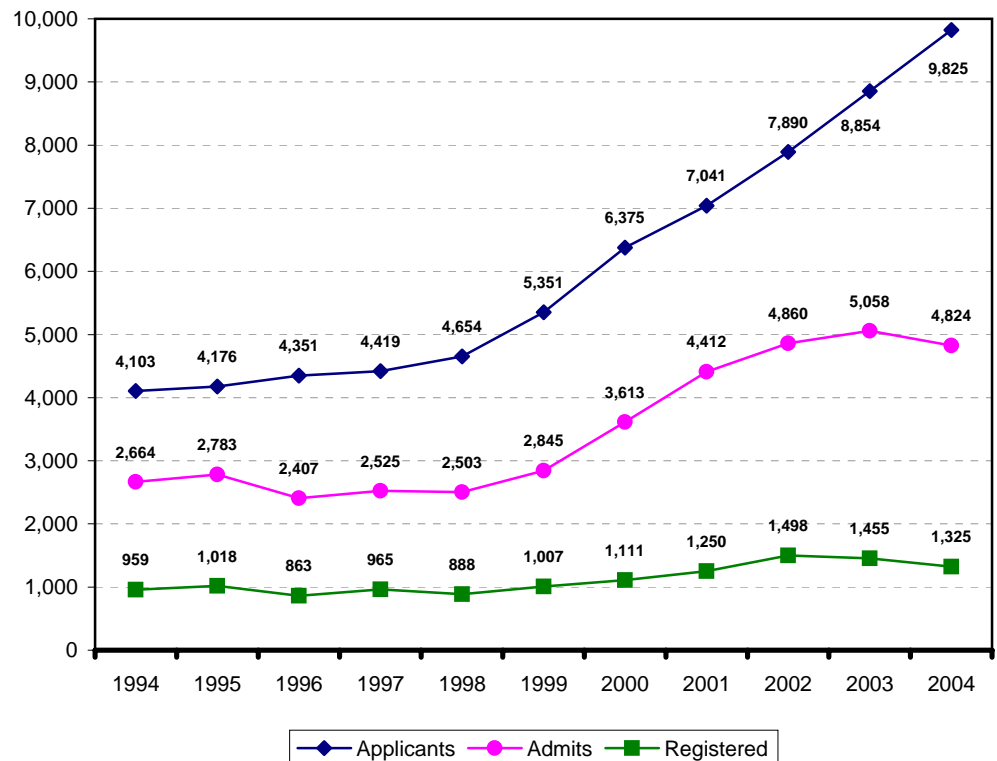


Table 31.

**New Transfers by Gender** Fall Quarter

Gender	1994	1999	2000	2001	2002	2003	2004	10 Year Δ
• Female	448 47%	516 51%	555 50%	588 47%	724 48%	676 46%	631 48%	+41%
• Male	511 53%	491 49%	556 50%	662 53%	774 52%	779 54%	694 52%	+36%
<b>Total</b>	<b>959</b>	<b>1,007</b>	<b>1,111</b>	<b>1,250</b>	<b>1,498</b>	<b>1,455</b>	<b>1,325</b>	<b>+38%</b>

At 52%, male transfer students outnumber women by four percent, respectively.

Figure 16.

**New Transfers by Gender** Fall Quarter

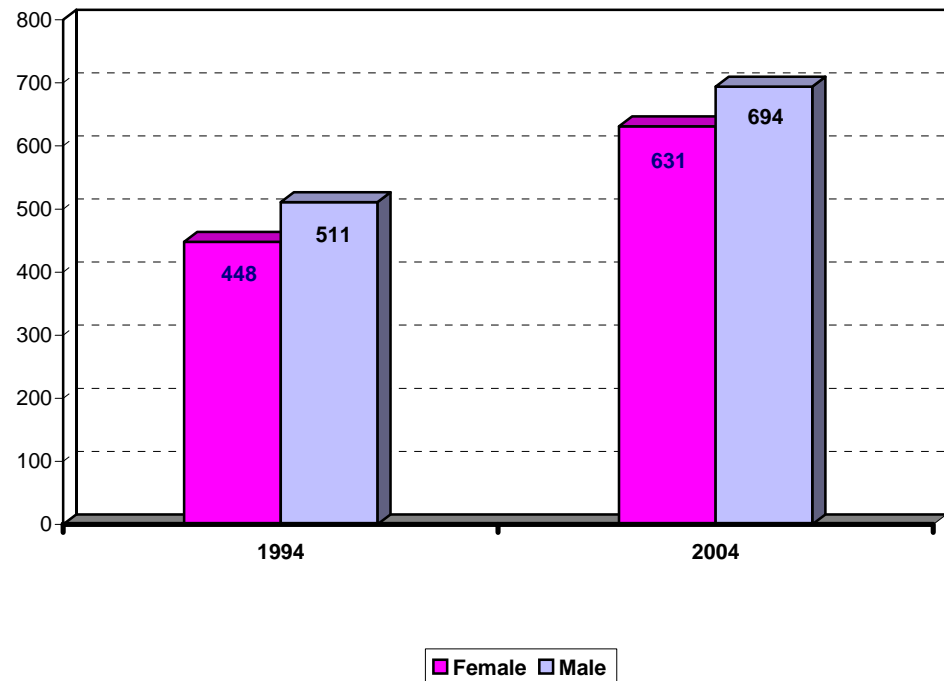


Table 32.

**New Transfers by Ethnicity**

Fall Quarter

Over the past decade the proportion of African-American and Latino students has remained, relatively, unchanged. At the same time, the proportion of Asian and students classified as "Other" has increased. The proportion of Mexican-American, Filipino, Native-American and Caucasian students has declined.

Ethnicity	1994	1999	2000	2001	2002	2003	2004	10 Year Δ
• African-American	22 2%	14 1%	18 2%	23 2%	24 2%	22 2%	24 2%	+9%
• Asian	202 21%	222 22%	279 25%	330 26%	491 33%	481 33%	387 29%	+92%
• Mexican-American	95 10%	86 9%	101 9%	106 8%	121 8%	102 7%	112 8%	+18%
• Filipino	49 5%	33 3%	49 4%	56 4%	54 4%	49 3%	55 4%	+12%
• Latino	30 3%	30 3%	34 3%	38 3%	44 3%	43 3%	44 3%	+47%
• Native-American	12 1%	5 0%	4 0%	10 1%	8 1%	10 1%	5 0%	-58%
• Caucasian	469 49%	454 45%	459 41%	508 41%	538 36%	502 35%	472 36%	+1%
• Other/Undeclared	80 8%	163 16%	167 15%	179 14%	218 15%	246 17%	226 17%	+183%
<b>Total</b>	<b>959</b>	<b>1,007</b>	<b>1,111</b>	<b>1,250</b>	<b>1,498</b>	<b>1,455</b>	<b>1,325</b>	<b>+38%</b>

Table 33.

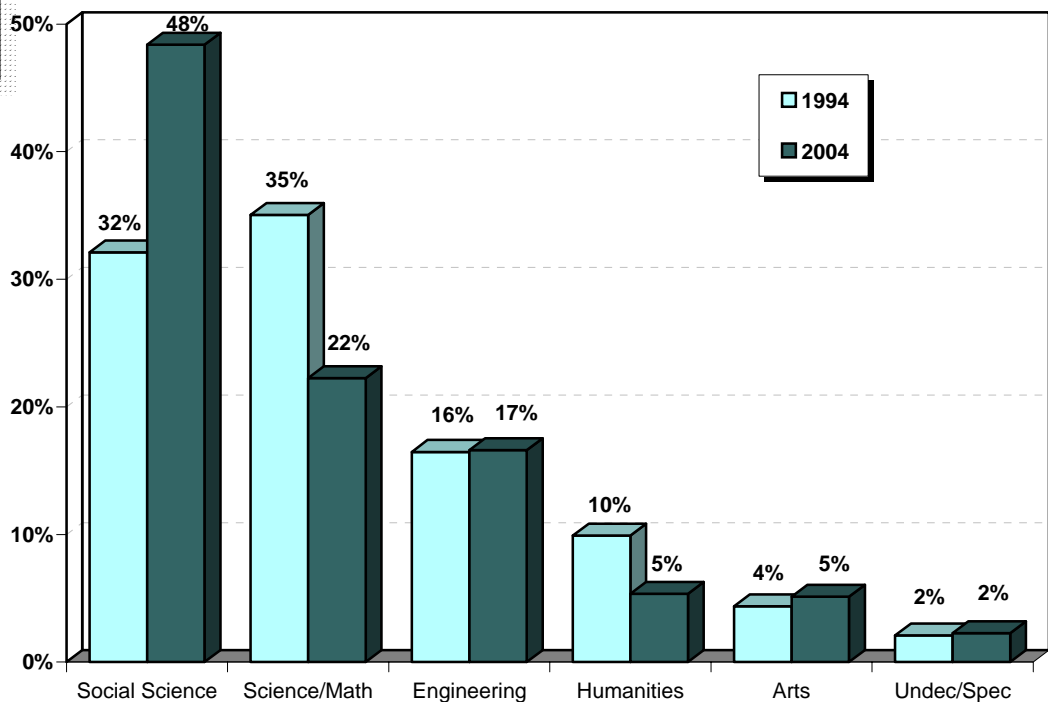
**New Transfers by Major Field of Study** Fall Quarter

Major Field of Study	1994	1999	2000	2001	2002	2003	2004	10 Year Δ
• Arts	42 4%	63 6%	73 7%	101 8%	110 7%	102 7%	68 5%	+62%
• Humanities	95 10%	66 7%	80 7%	73 6%	96 6%	86 6%	71 5%	-25%
• Engineering	158 16%	203 20%	278 25%	273 22%	333 22%	356 24%	220 17%	+39%
• Science/Math	336 35%	264 26%	225 20%	279 22%	303 20%	231 16%	295 22%	-12%
• Social Science	308 32%	394 39%	438 39%	503 40%	607 41%	619 43%	641 48%	+108%
• Undeclared/ Special	20 2%	17 2%	17 2%	21 2%	49 3%	61 4%	30 2%	+50%
<b>Total</b>	<b>959</b>	<b>1,007</b>	<b>1,111</b>	<b>1,250</b>	<b>1,498</b>	<b>1,455</b>	<b>1,325</b>	<b>+38%</b>

Social Science was by far the most popular field of study among new transfer students in 2004.

Figure 17.

**New Transfers by Major Field of Study** Fall Quarter



Ninety-two percent of new transfer students attended a California Community College prior to enrolling at UCSD. The largest number of new transfer students come from either San Diego or Los Angeles county. The proportion of transfer students from a foreign country has increased over the past decade.

Table 34.

**New Transfers by Transfer Institution** Fall Quarter

Transfer Institution	1994	1999	2000	2001	2002	2003	2004	10 Year Δ
• California Community Colleges	890 93%	983 98%	1,057 95%	1,164 93%	1,381 92%	1,380 95%	1,215 92%	+37%
Transfer Admission Guarantee (TAG)	218 23%	184 18%	171 15%	156 12%	201 13%	175 12%	294 22%	+35%
Non-TAG	672 70%	799 79%	886 80%	1,008 81%	1,297 87%	1,280 88%	921 70%	+37%
• Inter-campus Transfer/ Other 4 yr. College	61 6%	12 1%	48 4%	75 6%	87 6%	69 5%	104 8%	+70%
• Other/Unknown	8 1%	12 1%	6 1%	11 1%	30 2%	6 0%	6 0%	-25%
<b>Total</b>	<b>959</b>	<b>1,007</b>	<b>1,111</b>	<b>1,250</b>	<b>1,498</b>	<b>1,455</b>	<b>1,325</b>	<b>+38%</b>

Table 35.

**New Transfers by Home Location** Fall Quarter

Home Location	1994	1999	2000	2001	2002	2003	2004	10 Year Δ
• San Diego	477 50%	362 36%	362 33%	374 30%	461 31%	411 28%	465 35%	-3%
• Los Angeles	293 31%	320 32%	354 32%	386 31%	440 29%	426 29%	393 30%	+34%
• San Francisco	96 10%	152 15%	182 16%	218 17%	231 15%	271 19%	218 16%	+127%
• Other California	69 7%	118 12%	136 12%	147 12%	161 11%	143 10%	106 8%	+54%
• Out-of-State	2 0%	6 1%	6 1%	6 0%	10 1%	11 1%	8 1%	+300%
• Foreign	22 2%	49 5%	71 6%	119 10%	195 13%	193 13%	135 10%	+514%
<b>Total</b>	<b>959</b>	<b>1,007</b>	<b>1,111</b>	<b>1,250</b>	<b>1,498</b>	<b>1,455</b>	<b>1,325</b>	<b>+38%</b>



Table 36.

**New Transfers by Undergraduate College** Fall Quarter

Undergraduate College	1994	1999	2000	2001	2002	2003	2004	10 Year Δ
• Revelle	123 13%	142 14%	160 14%	217 17%	264 18%	223 15%	190 14%	+54%
• John Muir	251 26%	239 24%	283 25%	270 22%	314 21%	333 23%	242 18%	-4%
• Thurgood Marshall	203 21%	254 25%	247 22%	277 22%	338 23%	309 21%	306 23%	+51%
• Earl Warren	277 29%	264 26%	281 25%	282 23%	327 22%	369 25%	305 23%	+10%
• Eleanor Roosevelt	105 11%	108 11%	140 13%	204 16%	255 17%	221 15%	213 16%	+103%
• Sixth	NA NA	NA NA	NA NA	NA NA	NA NA	NA NA	69 5%	NA
<b>Total</b>	<b>959</b>	<b>1,007</b>	<b>1,111</b>	<b>1,250</b>	<b>1,498</b>	<b>1,455</b>	<b>1,325</b>	<b>+38%</b>

In 2004, Earl Warren and Thurgood Marshall Colleges enrolled the largest number of transfer students.

Figure 18.

**New Transfers by Undergraduate College** Fall Quarter

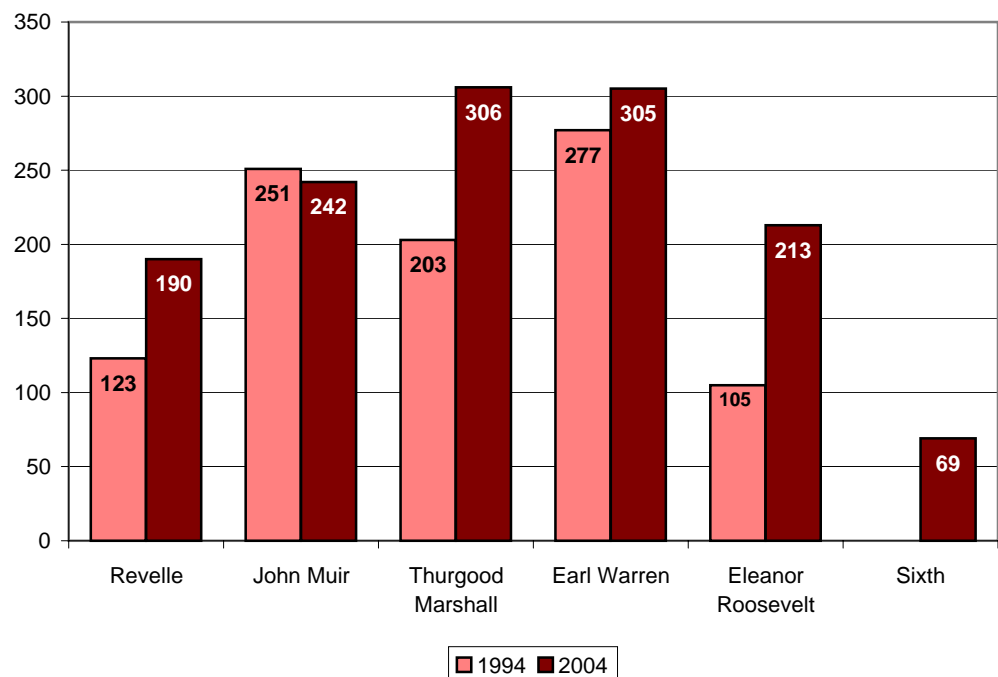


Table 37.

**New Transfers by 1st Generation College Status** Fall Quarter

College Status	1994	1999	2000	2001	2002	2003	2004	10 Year Δ
• First Generation	341 36%	339 34%	366 33%	388 31%	394 26%	448 31%	420 32%	+23%
• Not First Generation	618 64%	668 66%	745 67%	862 69%	1,104 74%	1,007 69%	905 68%	+46%
<b>Total</b>	<b>959</b>	<b>1,007</b>	<b>1,111</b>	<b>1,250</b>	<b>1,498</b>	<b>1,455</b>	<b>1,325</b>	<b>+38%</b>

The majority (68%) of new transfer students have at least one parent who has graduated from a two-year junior college or four-year college/university.

Table 38.

**New Transfers by Income Group** Fall Quarter

Income	1994	1999*	2000	2001	2002	2003	2004	10 Year Δ
• High (≥\$98,401)	NA NA	153 15%	183 16%	249 20%	270 18%	248 17%	255 19%	NA
• Medium High (\$65,601 - \$98,400)	NA NA	125 12%	139 13%	154 12%	212 14%	170 12%	143 11%	NA
• Medium Low (\$32,801 - \$65,600)	NA NA	221 22%	216 19%	245 20%	294 20%	289 20%	225 17%	NA
• Low (≤\$32,800)	NA NA	221 22%	212 19%	233 19%	259 17%	289 20%	272 21%	NA
• Missing	NA NA	287 29%	361 32%	369 30%	463 31%	459 32%	430 32%	NA
<b>Total</b>	<b>959</b>	<b>1,007</b>	<b>1,111</b>	<b>1,250</b>	<b>1,498</b>	<b>1,455</b>	<b>1,325</b>	<b>+38%</b>

\* 1999 Income Categories:  
 High = Income ≥ \$87,001  
 Medium High = \$58,001-\$87,000  
 Medium Low = \$29,001-\$58,000  
 Low = Income ≤ \$29,000

Table 39.

**New Transfers Freshmen by Athletic Status** Fall Quarter

College Status	1993	1999	2000	2001	2002	2003	2004*	10 Year Δ
• Athlete	NA NA	NA NA	NA NA	NA NA	60 4%	40 3%	NA NA	NA
• Non-Athlete	NA NA	NA NA	NA NA	NA NA	1,438 96%	1,415 97%	NA NA	NA
<b>Total</b>	<b>959</b>	<b>1,007</b>	<b>1,111</b>	<b>1,250</b>	<b>1,498</b>	<b>1,455</b>	<b>1,325</b>	<b>+38%</b>

\* 2004 Athlete data not available until Winter 2005 Quarter.

Table 40.

**Major\* Feeder Transfer Institutions** **Fall Quarter**

School	City	Enrollment N Fall 2004	% of Total Enrollment
San Diego Mesa College	San Diego	146	11.0%
Palomar College	San Marcos	84	6.3%
De Anza College	Cupertino	64	4.8%
Grossmont Community College	El Cajon	61	4.6%
Diablo Valley College	Pleasant Hills	60	4.5%
Southwestern College	Chula Vista	54	4.1%
Santa Monica College	Santa Monica	49	3.7%
Mira Costa College	Oceanside	47	3.5%
Pasadena City College	Pasadena	41	3.1%
San Diego City College	San Diego	40	3.0%
San Diego-Miramar College	San Diego	40	3.0%
Orange Coast College	Costa Mesa	29	2.2%
Foothill College	Los Altos Hills	27	2.0%
Saddleback Community College South	Mission Viejo	26	2.0%
Mount San Antonio College	Walnut	25	1.9%
City College of San Francisco	San Francisco	24	1.8%
UC Santa Cruz	Santa Cruz	24	1.8%
Moorpark College	Moorpark	20	1.5%
UC Riverside	Riverside	20	1.5%
El Camino College	Torrance	18	1.4%
Irvine Valley College	Irvine	18	1.4%
Los Angeles Pierce College	Woodland Hills	18	1.4%
College of San Mateo	San Mateo	17	1.3%
Cuyamaca College	El Cajon	15	1.1%
West Valley College	Saratoga	15	1.1%
Glendale Community College	Glendale	14	1.1%
UC Irvine	Irvine	13	1.0%
American River College	Sacramento	11	0.8%
UC Davis	Davis	11	0.8%
Cerritos College	Cerritos	10	0.8%
Sacramento City College	Sacramento	10	0.8%
Santa Barbara City College	Santa Barbara	10	0.8%
<b>Subtotal (Number of Transfer Institutions = 32 )</b>		<b>1,061</b>	<b>80.1%</b>
<b>Other Institutions (Number of Transfer Institutions = 92 )</b>		<b>264</b>	<b>19.9%</b>
<b>Total (Number of Transfer Institutions = 124 )</b>		<b>1,325</b>	<b>100.0%</b>

San Diego Mesa College tops the list of major feeder transfer institutions. Over ten percent of the 2004 transfer cohort (n=146) transferred to UCSD from San Diego Mesa College.

\* Ten or more matriculants from named transfer institution.



**New  
Transfer  
Student  
Academic  
Preparation**

## ■ Academic Preparation: New Transfer Students

Table 41.

### New Transfer Cohort by Transfer GPA Averages Fall Quarter

Transfer	1994	1999	2000	2001	2002	2003	2004
• Transfer GPA	3.26	3.25	3.29	3.30	3.32	3.34	3.40

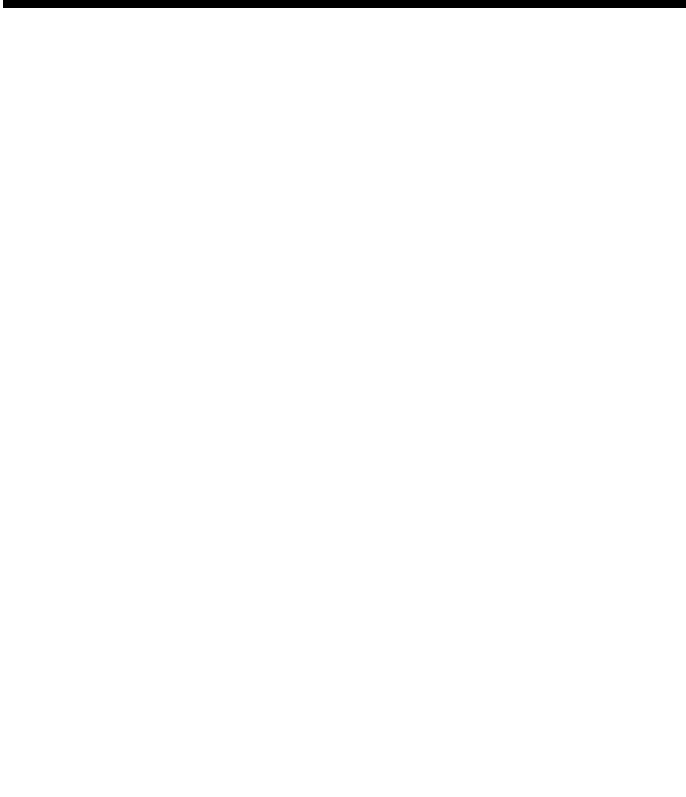
Table 42.

### New Transfer Cohort by Academic Indicator Ranges Fall Quarter

Transfer GPA Range	Percentage in Range	
	1994	2004
• 3.90 - High	5%	6%
• 3.60 - 3.89	17%	23%
• 3.30 - 3.59	25%	33%
• 3.00 - 3.29	27%	26%
• 2.70 - 2.99	19%	9%
• Low - 2.69	7%	2%
<b>Total</b>	<b>100%</b>	<b>100%</b>

Reaching a record high, the mean transfer GPA for the 2004 new transfer cohort was 3.40.

Approximately, 23% of the new transfer cohort had a GPA of 3.60 and higher.



**Degrees  
Conferred**

# ■ Degrees Conferred

Table 43.

Degrees Conferred: All Degree Types							Fall Quarter
All Degree Types	1993/1994	1999/2000	2000/2001	2001/2002	2002/2003	2003/2004	10 Year Δ
• Bachelors	3,499 77%	3,530 78%	3,713 79%	3,922 80%	4,248 79%	4,136 75%	+18%
• Masters	459 10%	408 9%	423 9%	495 10%	573 11%	785 14%	+71%
• Candidate in Philosophy	143 3%	150 3%	147 3%	117 2%	170 3%	161 3%	+13%
• Doctor of Philosophy	285 6%	294 7%	285 6%	278 6%	279 5%	327 6%	+15%
• Doctor of Medicine	140 3%	130 3%	136 3%	61 1%	128 2%	100 2%	-29%
<b>Total</b>	<b>4,526</b>	<b>4,512</b>	<b>4,704</b>	<b>4,873</b>	<b>5,398</b>	<b>5,509</b>	<b>+22%</b>

Setting a new record, UCSD awarded more than fifty-five hundred undergraduate, graduate and professional degrees in 2003/2004.

Figure 19.

Degrees Conferred Undergraduate and Graduate Degree Trends

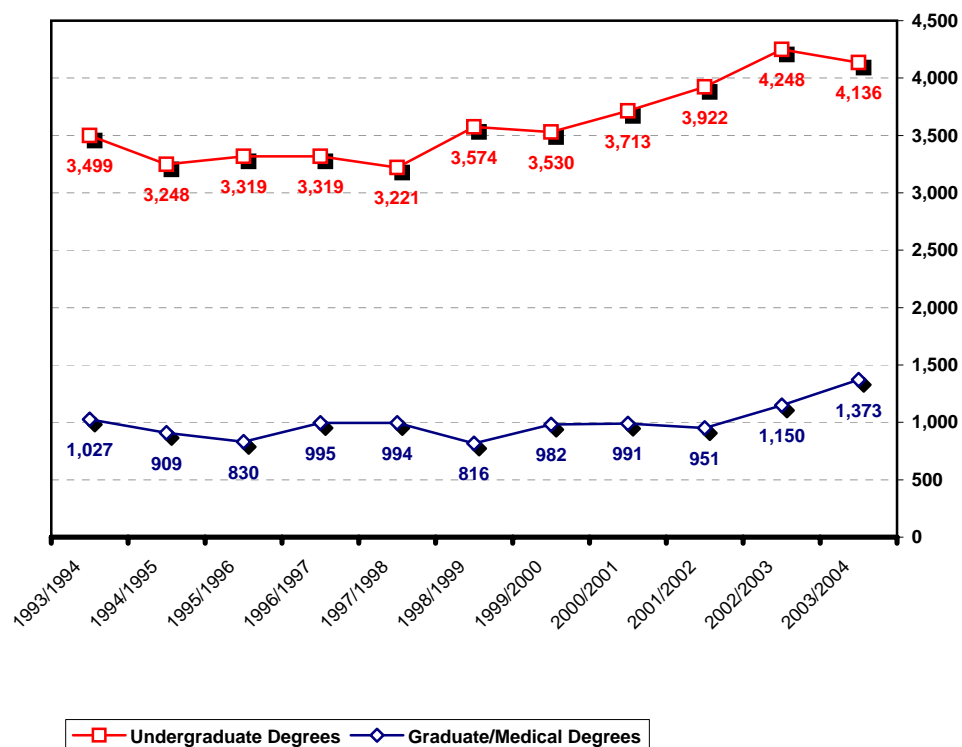


Table 44.

**Undergraduate Degrees by Gender** Fall Quarter

Gender	1993/1994	1999/2000	2000/2001	2001/2002	2002/2003	2003/2004	10 Year Δ
• Female	1,783 51%	1,865 53%	2,022 54%	2,113 54%	2,260 53%	2,272 55%	+27%
• Male	1,716 49%	1,665 47%	1,691 46%	1,809 46%	1,988 47%	1,864 45%	+9%
<b>Total UG Degrees</b>	<b>3,499</b>	<b>3,530</b>	<b>3,713</b>	<b>3,922</b>	<b>4,248</b>	<b>4,136</b>	<b>+18%</b>

Of the 4,136 undergraduate degrees awarded in 2003/2004, the majority (55%) were awarded to women.

Figure 20.

**Undergraduate Degrees by Gender** Fall Quarter

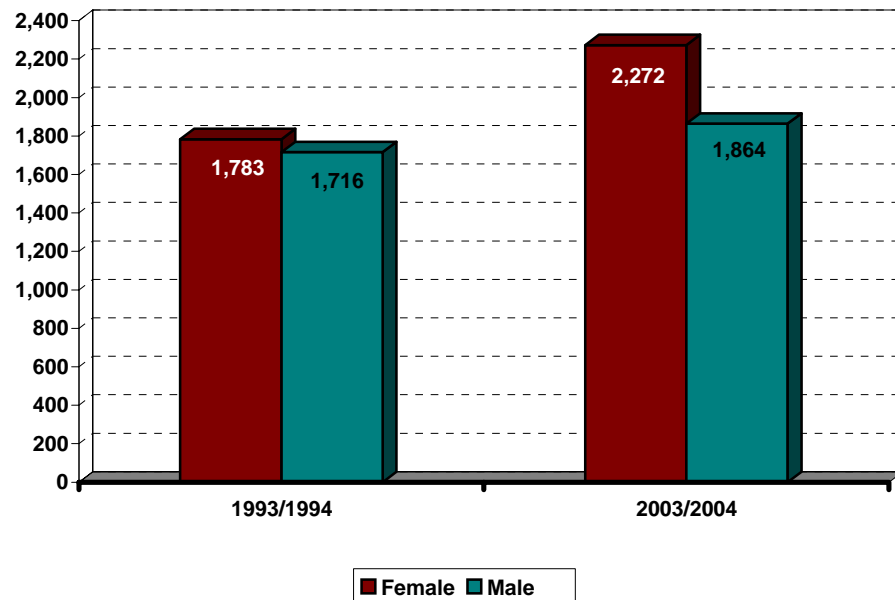




Table 45.

**Undergraduate Degrees by Ethnicity** Fall Quarter

Ethnicity	1993/1994	1999/2000	2000/2001	2001/2002	2002/2003	2003/2004	10 Year Δ
• African-American	84 2%	65 2%	59 2%	58 1%	64 2%	50 1%	-40%
• Asian	546 16%	1,011 29%	1,029 28%	1,039 26%	1,263 30%	1,276 31%	+134%
• Mexican-American	231 7%	255 7%	293 8%	284 7%	316 7%	304 7%	+32%
• Filipino	128 4%	213 6%	193 5%	191 5%	204 5%	196 5%	+53%
• Latino	98 3%	64 2%	95 3%	90 2%	91 2%	85 2%	-13%
• Native-American	25 1%	35 1%	34 1%	25 1%	29 1%	15 0%	-40%
• Caucasian	2,082 60%	1,482 42%	1,550 42%	1,667 43%	1,692 40%	1,669 40%	-20%
• Other/Undeclared	305 9%	405 11%	460 12%	568 14%	589 14%	541 13%	+77%
<b>Total UG Degrees</b>	<b>3,499</b>	<b>3,530</b>	<b>3,713</b>	<b>3,922</b>	<b>4,248</b>	<b>4,136</b>	<b>+18%</b>

Almost one-half (46%) of the bachelor's degrees were awarded to students of color.

Figure 21.

**Undergraduate Degrees by Ethnicity** Fall Quarter

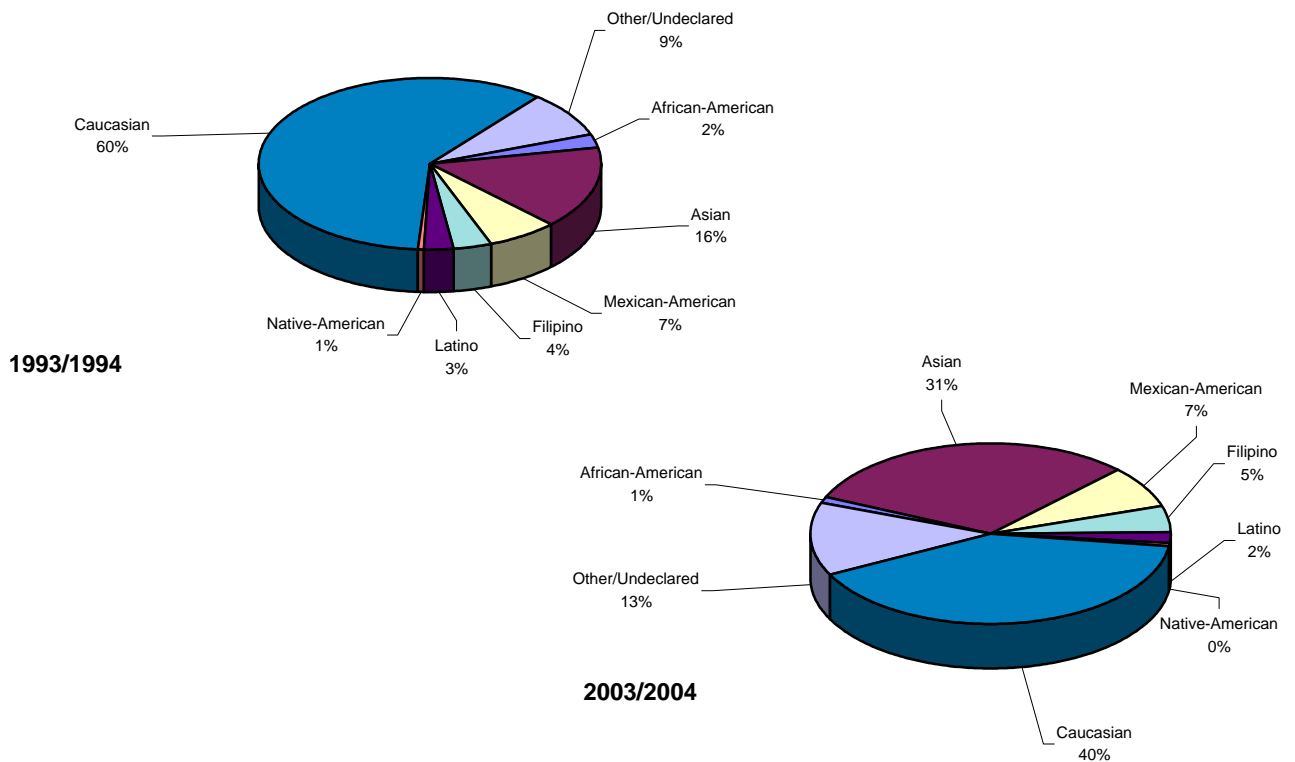


Table 46.

Undergraduate Degrees by Major Field of Study							Fall Quarter
Major Field of Study	1993/1994	1999/2000	2000/2001	2001/2002	2002/2003	2003/2004	10 Year Δ
• Arts	188 5%	147 4%	214 6%	236 6%	300 7%	281 7%	+49%
• Humanities	372 11%	250 7%	273 7%	244 6%	226 5%	253 6%	-32%
• Engineering	344 10%	533 15%	540 15%	563 14%	674 16%	654 16%	+90%
• Science/Math	923 26%	1,102 31%	1,029 28%	957 24%	994 23%	920 22%	-0%
• Social Science	1,597 46%	1,494 42%	1,649 44%	1,916 49%	2,051 48%	2,022 49%	+27%
• Double/Special	75 2%	4 0%	8 0%	6 0%	3 0%	6 0%	-92%
<b>Total UG Degrees</b>	<b>3,499</b>	<b>3,530</b>	<b>3,713</b>	<b>3,922</b>	<b>4,248</b>	<b>4,136</b>	<b>+18%</b>

Almost one-half (49%) of all bachelor's degrees were awarded to Social Science majors.

Table 47.

Undergraduate Degrees by College							Fall Quarter
College	1993/1994	1999/2000	2000/2001	2001/2002	2002/2003	2003/2004	10 Year Δ
• Revelle	690 20%	682 19%	650 18%	725 18%	793 19%	715 17%	+4%
• John Muir	952 27%	766 22%	847 23%	925 24%	937 22%	916 22%	-4%
• Thurgood Marshall	707 20%	771 22%	804 22%	792 20%	940 22%	932 23%	+32%
• Earl Warren	758 22%	938 27%	968 26%	979 25%	1,067 25%	1,009 24%	+33%
• Eleanor Roosevelt*	392 11%	373 11%	444 12%	501 13%	511 12%	564 14%	+44%
<b>Total UG Degrees</b>	<b>3,499</b>	<b>3,530</b>	<b>3,713</b>	<b>3,922</b>	<b>4,248</b>	<b>4,136</b>	<b>+18%</b>

\* Eleanor Roosevelt College enrolled its first class of undergraduates in 1988.

Table 48.

**Undergraduate Degrees by 1st Generation College Status** Fall Quarter

College Status	1993/1994	1999/2000	2000/2001	2001/2002	2002/2003	2003/2004	10 Year $\Delta$
• First Generation	NA	793	859	870	998	982	NA
	NA	22%	23%	22%	23%	24%	
• Not First Generation	NA	2,737	2,854	3,052	3,250	3,154	NA
	NA	78%	77%	78%	77%	76%	
<b>Total UG Degrees</b>	<b>3,499</b>	<b>3,530</b>	<b>3,713</b>	<b>3,922</b>	<b>4,248</b>	<b>4,136</b>	<b>+18%</b>

Table 49.

**Undergraduate Degrees by Income Group** Fall Quarter

Income*	1993/1994	1999/2000	2000/2001	2001/2002	2002/2003	2003/2004	10 Year $\Delta$
• High ( $\geq$ \$98,401)	NA	746	758	828	972	905	NA
	NA	21%	20%	21%	23%	22%	
• Medium High (\$65,601 - \$98,400)	NA	655	614	618	612	618	NA
	NA	19%	17%	16%	14%	15%	
• Medium Low (\$32,801 - \$65,600)	NA	657	850	872	851	833	NA
	NA	19%	23%	22%	20%	20%	
• Low ( $\leq$ \$32,800)	NA	643	760	735	837	742	NA
	NA	18%	20%	19%	20%	18%	
• Missing	NA	829	731	869	976	1,038	NA
	NA	23%	20%	22%	23%	25%	
<b>Total UG Degrees</b>	<b>3,499</b>	<b>3,530</b>	<b>3,713</b>	<b>3,922</b>	<b>4,248</b>	<b>4,136</b>	<b>+18%</b>

\* 1999 Income Categories:

High = Income  $\geq$  \$87,001

Medium High = \$58,001-\$87,000

Medium Low = \$29,001-\$58,000

Low = Income  $\leq$  \$29,000

Table 50.

**Time-to-Degree\*/Academic Performance**  
**Entered UCSD from High School** Fall Quarter

Undergraduate Degrees	1993/1994	1999/2000	2000/2001	2001/2002	2002/2003	2003/2004
• Time-to-Degree						
Average Elapsed Time in Years	4.4 yrs.	4.5 yrs.	4.4 yrs.	4.4 yrs.	4.5 yrs.	4.4 yrs.
Average Elapsed Time in Quarters	13.3 qtrs.	13.5 qtrs.	13.2 qtrs.	13.2 qtrs.	13.5 qtrs.	13.3 qtrs.
• GPA at Graduation	3.12	3.14	3.16	3.14	3.16	3.19
GPA ≥ 3.5 (B+ or greater)	19.5%	21.5%	22.4%	20.2%	22.7%	25.4%
3.00 ≤ GPA < 3.5 (B to B+)	43.2%	42.8%	44.3%	44.8%	43.4%	42.8%
2.50 ≤ GPA < 3.00 (C+ to B)	29.9%	28.1%	26.4%	27.6%	26.6%	25.9%
2.0 ≤ GPA < 2.50 (C to C+)	7.4%	7.6%	6.9%	7.3%	7.2%	5.9%

\* Time-to-degree is reported in elapsed quarters from first enrollment date to graduation. Only the records of students who enter UCSD in the Fall Quarter are included in time-to-degree calculations. An academic year is defined as three quarters; twelve quarters equal four years. Summer degrees are combined with Fall degrees, and combined, represent one quarter.

The average time-to-degree for undergraduate students entering from high school is just over 13 quarters or 4.4 years. The average GPA for the 2003/2004 graduating class is 3.19.

Figure 22.

**Grade Distribution: Degree Recipients** Fall Quarter

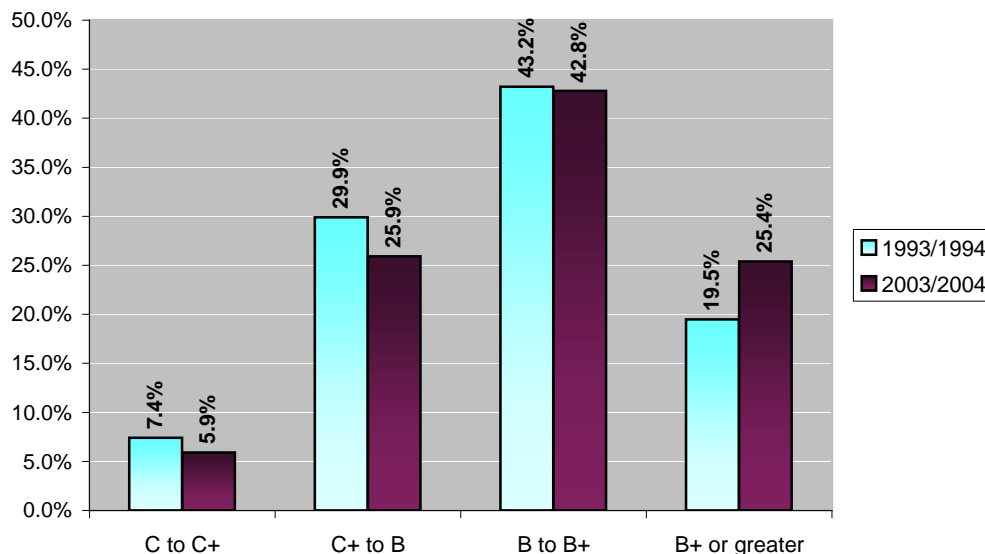


Table 51.

**Time-to-Degree\*/Academic Performance**  
**Entered UCSD from a Two-Year Community College** Fall Quarter

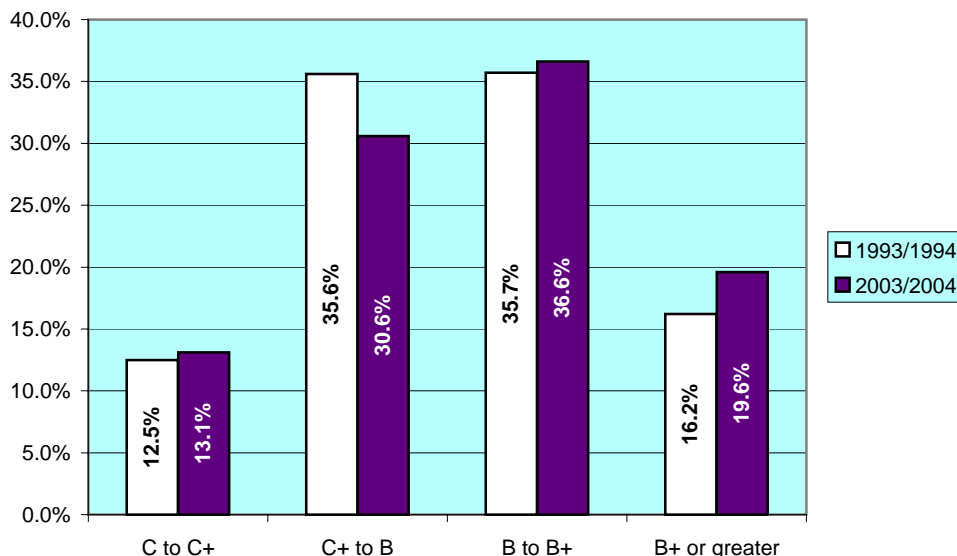
Undergraduate Degrees	1993/1994	1999/2000	2000/2001	2001/2002	2002/2003	2003/2004
• Time-to-Degree						
Average Elapsed Time in Years	3.1 yrs.	3.0 yrs.	2.9 yrs.	2.8 yrs.	2.7 yrs.	2.7 yrs.
Average Elapsed Time in Quarters	9.3 qtrs.	9.0 qtrs.	8.7 qtrs.	8.4 qtrs.	8.2 qtrs.	8.2 qtrs.
• GPA at Graduation						
GPA $\geq$ 3.5 (B+ or greater)	16.2%	16.8%	16.3%	14.7%	17.1%	19.6%
3.00 $\leq$ GPA < 3.5 (B to B+)	35.7%	34.6%	36.3%	39.7%	36.5%	36.6%
2.50 $\leq$ GPA < 3.00 (C+ to B)	35.6%	32.1%	33.3%	32.2%	34.5%	30.6%
2.0 $\leq$ GPA < 2.50 (C to C+)	12.5%	16.5%	13.9%	13.4%	12.0%	13.1%

\* Time-to-degree is reported in elapsed quarters from first enrollment date to graduation. Only the records of students who enter UCSD in the Fall Quarter are included in time-to-degree calculations. An academic year is defined as three quarters; twelve quarters equal four years. Summer degrees are combined with Fall degrees, and combined, represent one quarter.

Community College transfer students complete their degree requirements at UCSD in under nine quarters or three years. Showing a slight increase, the average GPA for the 2003/2004 graduating class for courses taken at UCSD was 3.06.

Figure 23.

**Grade Distribution: Degree Recipients** Fall Quarter





**Appendix:  
Undergraduate  
Major Fields  
of Study /  
Academic  
Departments**

## ■ Undergraduate Major Fields of Study/Academic Departments

### ARTS

#### *Music Department*

- MU01 Pre-Interdisciplinary Computing
- MU25 Music
- MU26 Music Humanities
- MU27 Interdisciplinary Computing and the Arts

#### *Theatre & Dance Department*

- TH26 Theatre
- TH27 Dance

#### *Visual Arts Department*

- VA01 Pre-Interdisciplinary Computing and the Arts
- VA02 Pre-Visual Arts (Media)
- VA26 Visual Arts (Art History/Criticism)
- VA27 Visual Arts (Media)
- VA28 Visual Arts (Studio)
- VA29 Interdisciplinary Computing and the Arts

### HUMANITIES

#### *Classical Studies*

- CL25 Classical Studies

#### *History Department*

- HI25 History

#### *Literature Department*

- LT01 Pre-Literature/Writing
- LT29 French Literature
- LT31 German Literature
- LT32 Russian Literature
- LT33 Spanish Literature
- LT34 Literature/Writing
- LT35 Italian Literature
- LT36 Literatures in English
- LT37 Literature/Composite Major
- LT38 Literatures of the World

#### *Philosophy Department*

- PL25 Philosophy

### SCHOOL OF ENGINEERING

#### *Bioengineering Department*

- BE02 Pre-Bioengineering: Pre-Medical
- BE04 Pre-Bioengineering: Bioinformatics
- BE25 Bioengineering
- BE26 Bioengineering: Pre-Medical
- BE27 Bioengineering: Biotechnology
- BE28 Bioengineering: Bioinformatics

#### *Chemical Engineering*

- CE25 Chemical Engineering

#### *Computer Science and Engineering Department*

- CS03 Pre-Computer Science with Specialization in Bioinformatics
- CS25 Computer Engineering (see also Electrical and Computer Engineering EC26)
- CS26 Computer Science
- CS27 Computer Science with Specialization in Bioinformatics

#### *Electrical and Computer Engineering Department*

- EC03 Pre-Electrical Engineering
- EC04 Pre-Engineering Physics
- EC26 Computer Engineering (see also Computer Science and Engineering CS25)
- EC27 Electrical Engineering
- EC28 Engineering Physics

#### *Mechanical and Aerospace Engineering Department*

- MC25 Aerospace Engineering
- MC27 Mechanical Engineering
- MC28 Engineering Science
- MC29 Environmental Engineering

#### *Structural Engineering*

- SE26 Engineering Sciences
- SE27 Structural Engineering

SCIENCE AND MATH

SOCIAL SCIENCE

*Biology Department*

- BI07 Pre-Biology with Specialization in Bioinformatics
- BI28 Animal Physiology and Neuroscience
- BI29 Biochemistry and Cell Biology  
(see also Chemistry CH31)
- BI30 Ecology, Behavior and Evolution
- BI31 General Biology
- BI32 Microbiology
- BI33 Molecular Biology
- BI34 Biology with Specialization in Bioinformatics
- BI35 Human Biology

*Chemistry and Biochemistry Department*

- CH01 Pre-Bioinformatics
- CH25 Chemistry
- CH28 Chemistry with Specialization in Earth Sciences
- CH31 Biochemistry/Chemistry (see also Biology BI29)
- CH32 Chemical Physics
- CH33 Chemical Education
- CH34 Environmental Chemistry
- CH35 Pharmacological Chemistry
- CH36 Molecular Synthesis
- CH37 Bioinformatics

*Earth Sciences Program*

- EA25 Earth Sciences
- EA26 Earth Sciences - Chemistry
- EA27 Earth Sciences - Physics

*Environmental Systems*

- ES25 Environmental Systems (Earth Sciences)
- ES26 Environmental Systems (Ecology, Behavior, & Evolution)
- ES27 Environmental Systems (Environmental Chemistry)
- ES28 Environmental Systems (Environmental Policy)

*Mathematics Department*

- MA01 Pre-Mathematics - Computer Science
- MA27 Mathematics (Applied)
- MA29 Mathematics
- MA30 Mathematics-Computer Science
- MA31 Mathematics/Applied Science
- MA32 Mathematics/Secondary Education
- MA33 Joint Major in Mathematics & Economics
- MA34 Mathematics-Scientific Computation

*Physics Department*

- PY26 Physics-Biophysics
- PY28 Physics with Specialization in Earth Sciences
- PY29 Physics
- PY30 General Physics
- PY31 General Physics, Secondary Education
- PY32 Physics with Specialization in Materials Physics
- PY33 Physics with Specialization in Computational Physics
- PY34 Physics with Specialization in Astrophysics

*Anthropology Department*

- AN25 Anthropology
- AN26 Anthropology (Concentration in Biological Anthropology)
- AN27 Anthropology (Concentration in Archaeology)

*Chinese Studies*

- CN25 Chinese Studies

*Cognitive Science Department*

- CG25 Cognitive Science
- CG27 Cognitive Science with Specialization in Computation
- CG28 Cognitive Science with Specialization in Human Cognition
- CG29 Cognitive Science with Specialization in Neuroscience
- CG30 Cognitive Science with Specialization in Hum. Comp. Inter.
- CG31 Cognitive Science with Clinical Aspects in Cognition

*Communication Department*

- CM26 Communication

*Critical Gender Studies*

- CR25 Critical Gender Studies

*Economics Department*

- EN25 Economics
- EN26 Management Science
- EN28 Joint Major in Mathematics & Economics

*Ethnic Studies Department*

- ET25 Ethnic Studies

*German Studies*

- GS25 German Studies

*Human Development Program*

- HD01 Pre-Human Development
- HD25 Human Development

*International Studies*

- IS25 International Studies - Anthropology
- IS26 International Studies - Economics
- IS27 International Studies - History
- IS28 International Studies - Linguistics
- IS29 International Studies - Literature
- IS30 International Studies - Political Science
- IS31 International Studies - Sociology

*Italian Studies*

- IT25 Italian Studies

*Japanese Studies*

- JA25 Japanese Studies



SOCIAL SCIENCE - continued

SPECIAL AND UNDECLARED

*Judaic Studies*

JU25 Judaic Studies

*Latin American Studies*

LA25 Latin American Studies

*Linguistics Department*

LN25 Linguistics  
 LN29 Linguistics (Specialization in Language and Society)  
 LN30 Linguistics (Specialization in Theoretical Linguistics)  
 LN32 Linguistics (Specialization in Cognition & Language)  
 LN33 Language Studies (Specialization in [the language of specialization])

*Political Science Department*

PS25 Political Science  
 PS26 Political Science-American Politics  
 PS27 Political Science-Comparative Politics  
 PS28 Political Science-International Relations  
 PS29 Political Science-Political Theory  
 PS30 Political Science-Public Law  
 PS31 Political Science-Public Policy

*Psychology Department*

PC26 Psychology

*Program for the Study of Religion*

RE26 Study of Religion

*Russian and Soviet Studies*

RU25 Russian and Soviet Studies

*Sociology Department*

SO25 Sociology

*Third World Studies*

TW25 Third World Studies

*Urban Studies and Planning Program*

US26 Urban Studies and Planning

*Interdisciplinary Studies*

IN25 John Muir College Special Project Major  
 IN26 Revelle College Individual Major  
 IN27 Eleanor Roosevelt College Individual Studies  
 IN28 Earl Warren College Individual Studies  
 IN29 Thurgood Marshall College Individual Studies

*Undeclared*

UNBS Undeclared - Biological Sciences  
 UNHA Undeclared - Humanities/Arts  
 UNPS Undeclared - Physical Sciences  
 UNSS Undeclared - Social Sciences  
 UN27 Undeclared

*Limited Status*

*Special-Employee*



The *Student Digest* is an annual publication of the  
Office of Student Research & Information,  
Student Affairs, 858-534-2382.

This document is also available on the  
World Wide Web at:

[studentresearch.ucsd.edu](http://studentresearch.ucsd.edu)