



University of California,
San Diego

STUDENT digest

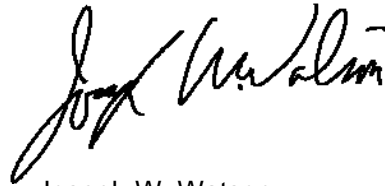
FALL 2005

Enrollment and Academic
Performance Statistics

Office of Student Research
& Information,
Student Affairs
studentresearch.ucsd.edu

■ INTRODUCTION

□ The *Student Digest*, published annually by the Office of Student Research and Information, provides the campus community with a broad overview of trends in undergraduate enrollments, academic performance and graduation statistics. If you have questions or comments regarding this publication, please contact the Office of Student Research and Information/Student Affairs at (858) 534-2382. If you wish to view this report and other statistical reports, they can be found on the World Wide Web at <http://studentresearch.ucsd.edu>.



Joseph W. Watson
Vice Chancellor

STUDENT DIGEST

Enrollment and Academic Performance Statistics

Fall 2005

University of California, San Diego

William B. Armstrong, Ph.D.
Director

Heidi M. Carty, Ph.D.
Principal Research Analyst

Greg Martin
Programmer Analyst

Jason R. Thornton
Research Analyst

Student Research & Information
Student Affairs
University of California, San Diego
La Jolla, CA 92093-0088
<http://studentresearch.ucsd.edu>

■ Table of Contents

Total Campus Enrollment	4
Total Campus Population Summary	5
Total Undergraduate Enrollment	6
By Class Level	7
By Gender	8
By Ethnicity	9
By Major Field of Study	10
By Major Department	11
By College	12
Academic Profile: Undergraduates	13
Total Undergraduate Population Summary	14
By Class Level	15
By Major Field of Study	16
New Students	17
New Student Enrollments	18
First-Time Freshmen	19
Applicants, Admits & Registered	20
By Gender	21
By Ethnicity	22
By Major Field of Study	23
By Major Department at Time of Admission	24
By College & Home Location	25
By 1st Generation College Status & Income Group & Athletic Status	26
Major Feeder High Schools	27
High School Grades and SAT Scores	28
Indicators of Academic Preparation	29
High School GPA by Gender, Ethnicity, Major Field of Study, Home Location, 1st Generation College Status & Income Group	30
SAT I Scores by Gender, Ethnicity, Major Field of Study, Home Location, 1st Generation College Status & Income Group	31
SAT II Scores by Gender, Ethnicity, Major Field of Study, Home Location, 1st Generation College Status & Income Group	32
UCSD/UC Systemwide Comparison	33
New Transfer Students	34
Applicants, Admits & Registered	35
By Gender	36
By Ethnicity	37
By Major Field of Study	38
By Transfer Institution & Home Location	39
By Undergraduate College	40
By 1st Generation College Status & Income Group & Athletic Status	41
Major Feeder Transfer Institutions	42
New Transfer Student Academic Preparation	43
Indicators of Academic Preparation	44
Degrees Conferred	45
All Degree Types	46
Bachelor Degrees by Gender	47
Bachelor Degrees by Ethnicity	48
Bachelor Degrees by Major Field of Study & College	49
Bachelor Degrees by First Generation College Status & Income	50
Time-to-Degree/Academic Performance for Students Who Entered UCSD from High School	51
Time-to-Degree/Academic Performance for Students Who Entered UCSD from a Two-Year Community College	52
Appendix: Undergraduate Major Fields of Study/ Academic Departments	53



**Total
Campus
Enrollment**

■ TOTAL CAMPUS ENROLLMENT

Almost thirty thousand students are enrolled at UCSD - showing an increase of 42% over the past decade. UCSD enrolled 20,679 undergraduate students, and 5,285 graduate and medical students.

Table 1.

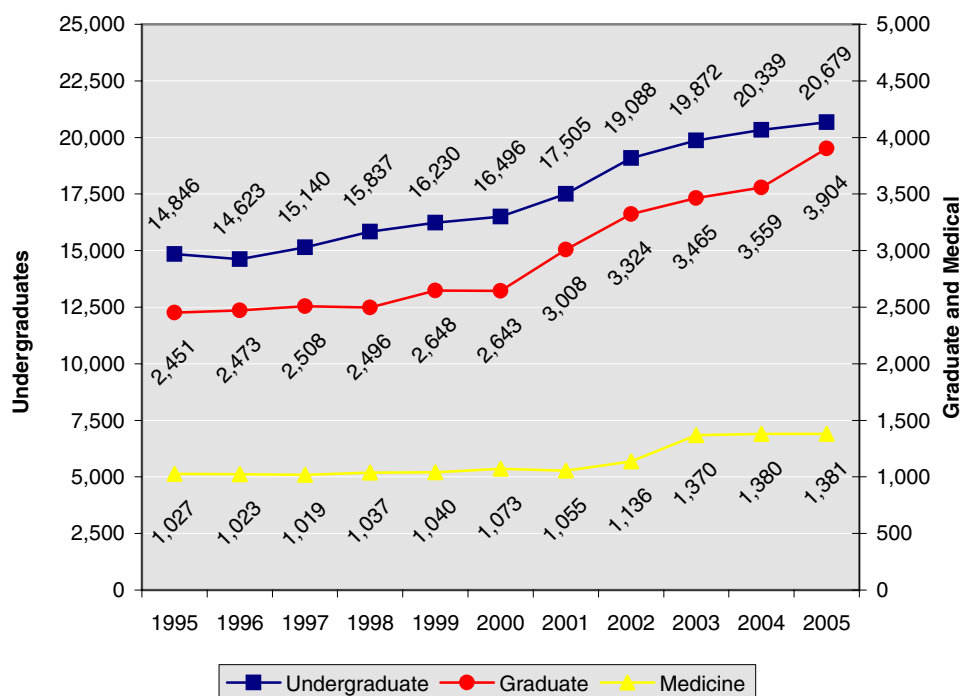
Total Campus Enrollment: The Past Decade Fall Quarter

UCSD Enrollment	1995	2000	2001	2002	2003	2004	2005	10 Year Δ
• Undergraduate	14,846	16,496	17,505	19,088	19,872	20,339	20,679	+39%
• Graduate *	2,451	2,643	3,008	3,324	3,465	3,559	3,904	+59%
• Medicine	1,027	1,073	1,055	1,136	1,370	1,380	1,381	+34%
Total Campus Enrollment	18,324	20,212	21,568	23,548	24,707	25,278	25,964	+42%

* includes Teacher Education Program.

Figure 1.

Total Campus Enrollment: The Past Decade Fall Quarter





**Total
Undergraduate
Enrollment**

Undergraduate Enrollment

Undergraduate enrollments have increased by 39% over the past decade. The majority of undergraduate students (63%) at UCSD are upper division.

Table 2.

Undergraduate Enrollment by Class Level Fall Quarter

The Undergraduates	1995	2000	2001	2002	2003	2004	2005	10 Year Δ
• Lower Division	6,249 42%	6,557 40%	7,214 41%	8,059 42%	7,847 39%	7,581 37%	7,551 37%	+21%
Freshman	3,610 24%	3,366 20%	4,185 24%	4,350 23%	3,973 20%	3,954 19%	3,917 19%	+9%
Sophomore	2,639 18%	3,191 19%	3,029 17%	3,709 19%	3,874 19%	3,627 18%	3,634 18%	+38%
• Upper Division	8,597 58%	9,939 60%	10,291 59%	11,029 58%	12,025 61%	12,758 63%	13,128 63%	+53%
Junior	3,792 26%	4,640 28%	4,705 27%	4,920 26%	5,523 28%	5,560 27%	5,733 28%	+51%
Senior	4,805 32%	5,299 32%	5,586 32%	6,109 32%	6,502 33%	7,198 35%	7,395 36%	+54%
Total UG Enrollment	14,846	16,496	17,505	19,088	19,872	20,339	20,679	+39%

Figure 2.

Total Undergraduate Enrollment Trends by Class Level Fall Quarter

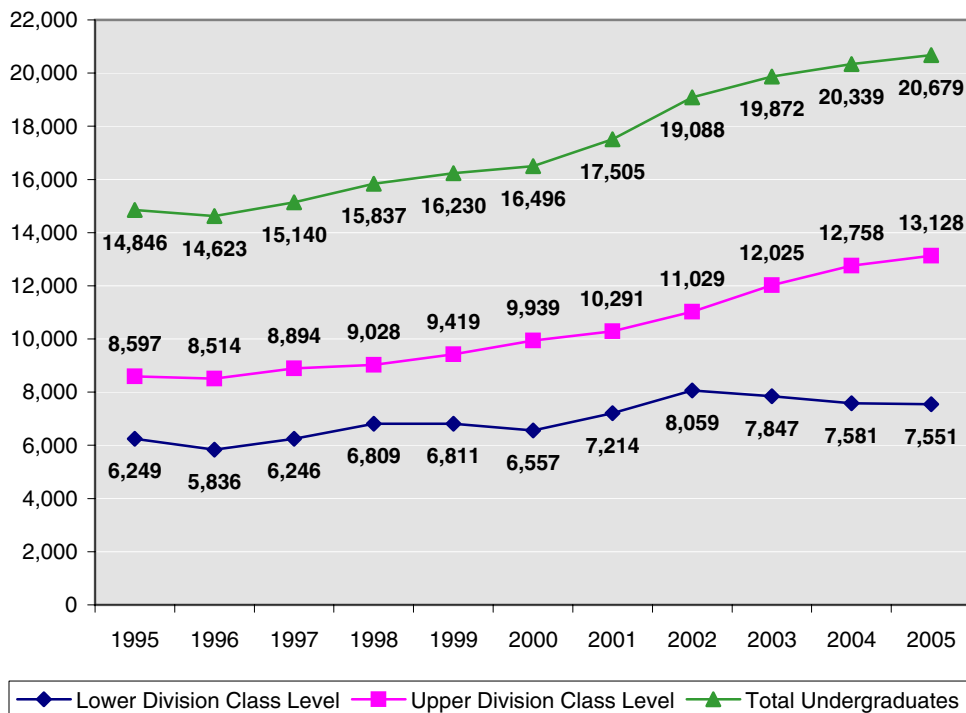


Table 3.

Undergraduates by Gender Fall Quarter

Gender	1995	2000	2001	2002	2003	2004	2005	10 Year Δ
• Female	7,341 49%	8,605 52%	9,105 52%	9,913 52%	10,359 52%	10,606 52%	10,835 52%	+48%
• Male	7,505 51%	7,891 48%	8,400 48%	9,175 48%	9,513 48%	9,733 48%	9,844 48%	+31%
Total UG Enrollment	14,846	16,496	17,505	19,088	19,872	20,339	20,679	+39%

Women
continue to
outnumber
men at UCSD
by
approximately
four percent.

Figure 3.

Undergraduate Enrollment by Gender Fall Quarter

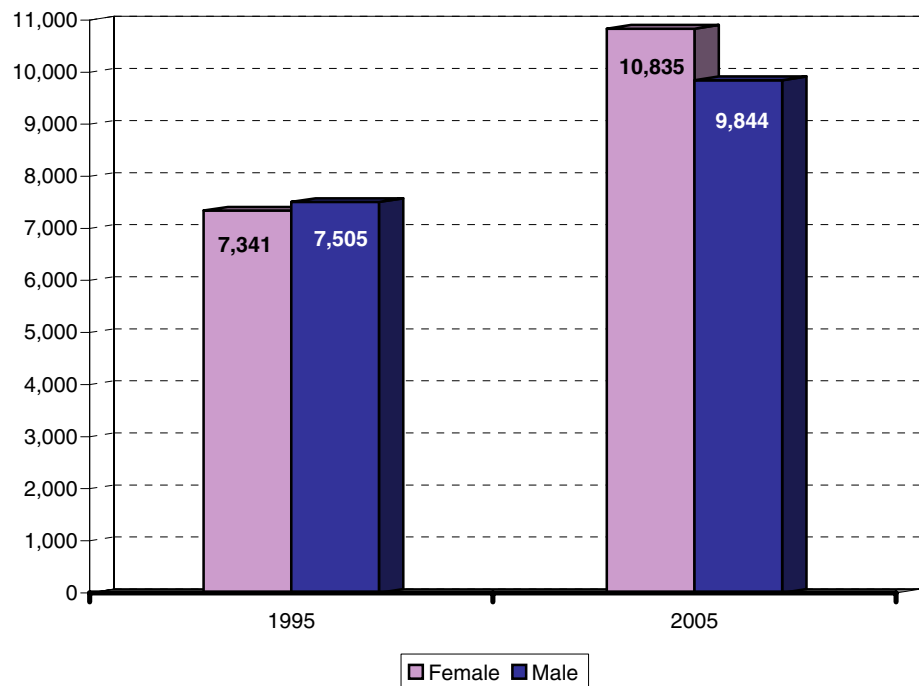


Table 4.

Undergraduates by Ethnicity Fall Quarter

Ethnicity	1995	2000	2001	2002	2003	2004	2005	10 Year Δ
• African-American	324 2%	224 1%	211 1%	219 1%	244 1%	273 1%	282 1%	-13%
• Asian	3,964 27%	4,948 30%	5,554 32%	6,426 34%	6,851 34%	7,221 36%	7,580 37%	+91%
• Mexican-American	1,344 9%	1,282 8%	1,322 8%	1,475 8%	1,584 8%	1,655 8%	1,720 8%	+28%
• Filipino	747 5%	850 5%	896 5%	956 5%	979 5%	1,017 5%	1,051 5%	+41%
• Latino	318 2%	374 2%	375 2%	428 2%	470 2%	481 2%	520 3%	+64%
• Native-American	125 1%	99 1%	81 0%	91 0%	84 0%	85 0%	89 0%	-29%
• Caucasian	6,623 45%	6,429 39%	6,652 38%	6,981 37%	7,048 35%	6,855 34%	6,625 32%	+0%
• Other/Undeclared	1,401 9%	2,290 14%	2,414 14%	2,512 13%	2,612 13%	2,752 14%	2,812 14%	+101%
Total UG Enrollment	14,846	16,496	17,505	19,088	19,872	20,339	20,679	+39%

Compared to 1995, there has been an increase in the proportion of Asian students and those self-identified as Other/Undeclared. At the same time, there has been a decrease in the proportion of African-American, Mexican-American and Caucasian students.

Figure 4.

Undergraduate Enrollment by Ethnicity Fall Quarter

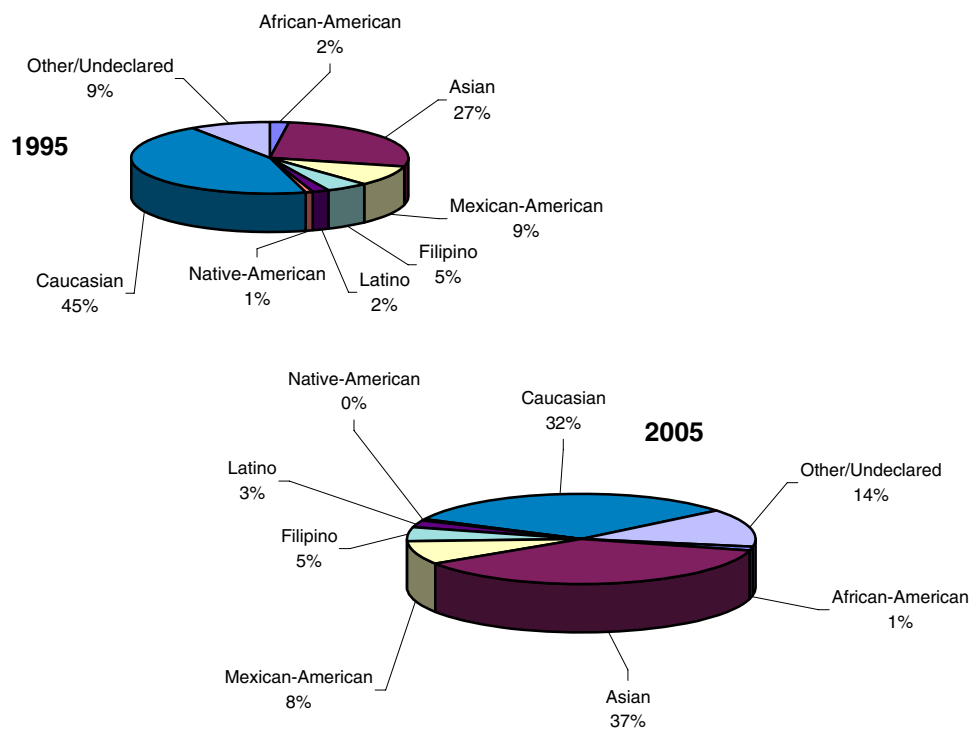


Table 5.

Undergraduates by Major Field of Study Fall Quarter

Major Field of Study	1995	2000	2001	2002	2003	2004	2005	10 Year Δ
• Arts	435 3%	800 5%	931 5%	1,047 5%	1,070 5%	945 5%	889 4%	+104%
• Humanities	941 6%	748 5%	740 4%	806 4%	875 4%	905 4%	902 4%	-4%
• Engineering	2,606 18%	3,320 20%	3,855 22%	4,284 22%	4,331 22%	4,273 21%	4,035 20%	+55%
• Science/Math	4,909 33%	4,444 27%	4,254 24%	4,405 23%	4,493 23%	4,944 24%	5,522 27%	+12%
• Social Science	3,998 27%	5,487 33%	5,830 33%	6,177 32%	6,515 33%	6,928 34%	7,372 36%	+84%
• Undec./Special	1,957 13%	1,697 10%	1,895 11%	2,369 12%	2,588 13%	2,344 12%	1,959 9%	+0%
Total UG Enrollment	14,846	16,496	17,505	19,088	19,872	20,339	20,679	+39%

The Social Sciences continue to be the most popular undergraduate field of study at UCSD.

Figure 5.

Undergraduate Enrollment by Major Field of Study Fall Quarter

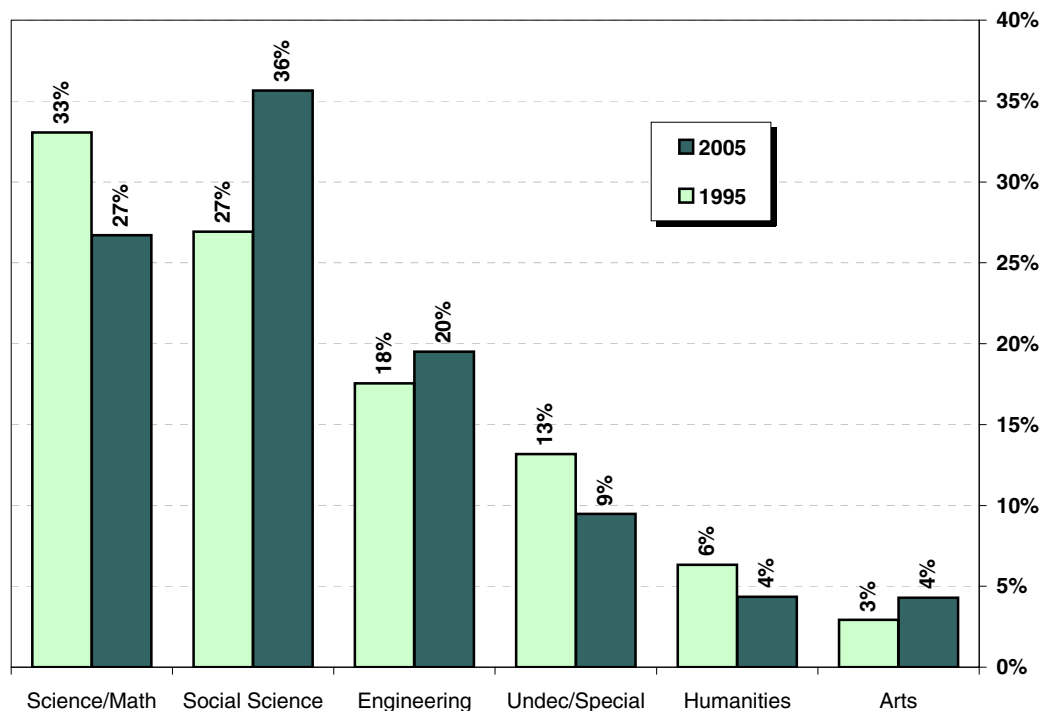


Table 6.

Undergraduates by Major Department **Fall Quarter**
Ten Most Populous Departments

1995			2005		
Major Department	n	%	Major Department	n	%
Biology	3,824	25.8%	Biology	3,809	18.4%
Psychology	1,062	7.2%	Economics	1,870	9.0%
Applied Mechanics & Eng. (AMES)	1,034	7.0%	Psychology	1,354	6.5%
Economics	757	5.1%	Political Science	1,200	5.8%
Political Science	675	4.5%	Mechanical & Aerospace Eng.	1,012	4.9%
Computer Science & Eng. (CSE)	626	4.2%	Bioengineering	995	4.8%
Chemistry	577	3.9%	Chemistry	990	4.8%
Electrical & Computer Eng. (ECE)	546	3.7%	Computer Science & Eng. (CSE)	773	3.7%
Communications	515	3.5%	Communications	705	3.4%
Bioengineering	400	2.7%	Electrical & Computer Eng. (ECE)	673	3.3%
Other Departments	2,880	19.4%	Other Departments	5,346	25.9%
Undeclared Majors	1,950	13.1%	Undeclared Majors	1,952	9.4%
TOTAL	14,846	100.0%	TOTAL	20,679	100.0%

Similar to 1995, the most popular undergraduate major at UCSD in 2005 is Biology. Economics has moved up two spots and is currently the second most popular undergraduate major.

Figure 6.

Ten Most Populous Departments **Fall Quarter**

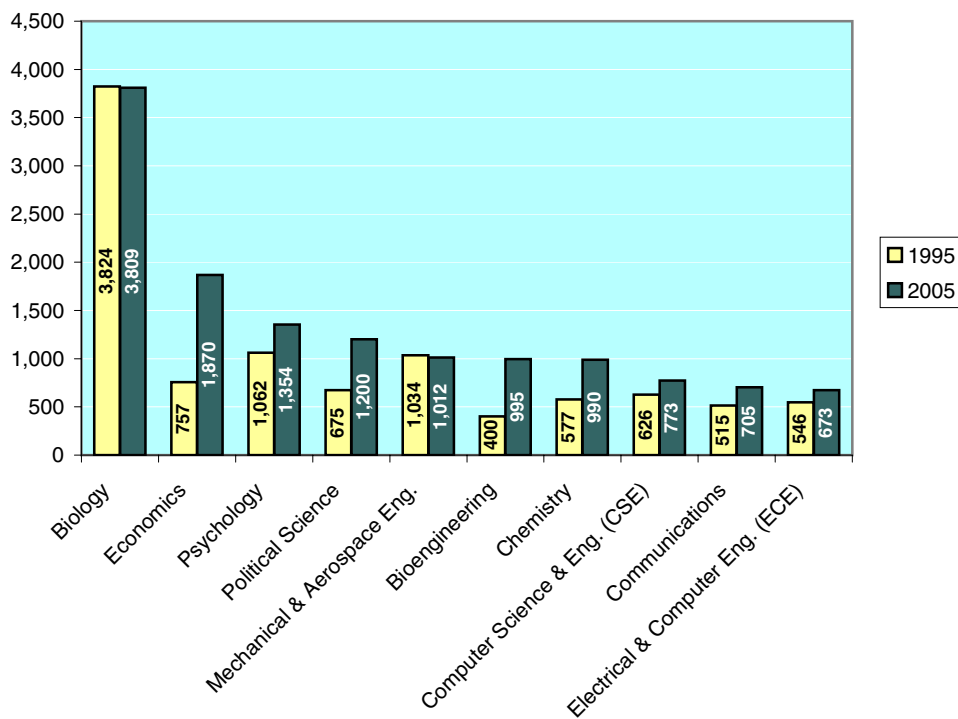


Table 7.

Undergraduates by College Fall Quarter

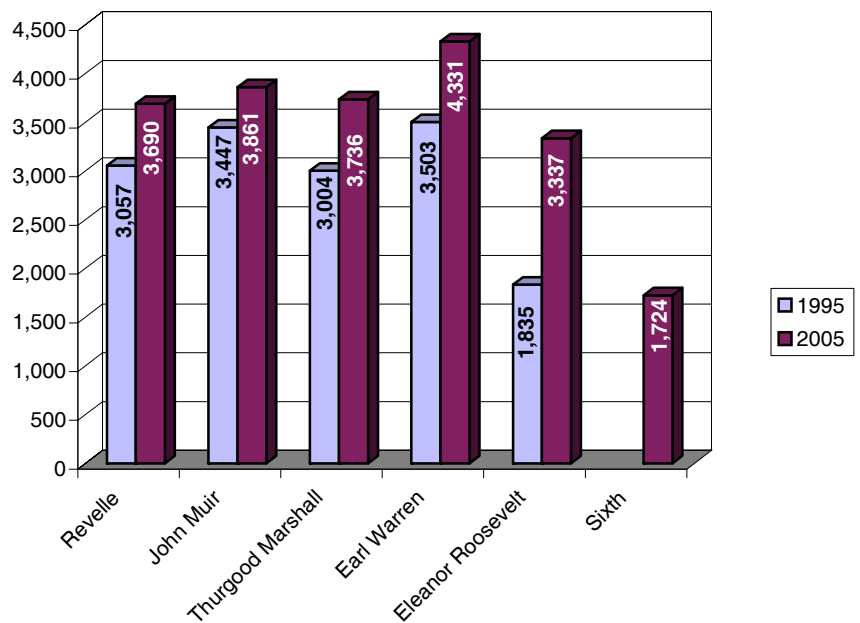
College	1995	2000	2001	2002	2003	2004	2005	10 Year Δ
• Revelle	3,057 21%	3,348 21%	3,504 21%	3,765 22%	3,697 19%	3,647 18%	3,690 18%	+21%
• John Muir	3,447 23%	3,503 22%	3,707 22%	3,833 22%	3,866 20%	3,797 19%	3,861 19%	+12%
• Thurgood Marshall	3,004 20%	3,342 21%	3,560 22%	3,794 22%	3,856 20%	3,813 19%	3,736 18%	+24%
• Earl Warren	3,503 24%	3,856 24%	4,046 25%	4,388 25%	4,559 24%	4,565 22%	4,331 21%	+24%
• Eleanor Roosevelt	1,835 12%	2,447 15%	2,688 16%	3,028 17%	3,232 17%	3,370 17%	3,337 16%	+82%
• Sixth*	NA NA	NA NA	NA NA	280 (1%)	662 (3%)	1,147 6%	1,724 8%	NA
Total UG Enrollment	14,846	16,496	17,505	19,088	19,872	20,339	20,679	

* Note: Sixth College enrolled its first class of undergraduates in 2002.

With more than 4,300 students, Earl Warren College enrolls the largest number of students of the six undergraduate colleges.

Figure 7.

Undergraduate Enrollments by College Fall Quarter





**Academic
Profile:
Undergraduates**

■ Academic Profile: Total Undergraduate Population

Table 8.

Academic Profile Summary Fall Quarter

Undergraduates	1995	2000	2001	2002	2003	2004	2005
• UCSD GPA	2.97	3.00	3.02	3.02	3.02	3.03	3.02
GPA \geq 3.5	16.0%	17.0%	18.2%	18.3%	19.0%	19.0%	18.6%
3.0 \leq GPA < 3.5	33.4%	35.3%	35.5%	35.3%	35.4%	36.8%	36.3%
2.5 \leq GPA < 3.0	32.4%	31.2%	30.8%	30.5%	30.0%	29.2%	29.7%
2.0 \leq GPA < 2.5	15.1%	13.9%	13.1%	13.4%	12.9%	12.7%	12.8%
GPA < 2.0	3.1%	2.6%	2.4%	2.4%	2.7%	2.4%	2.6%

The mean grade point average (GPA) for all undergraduates at UCSD is 3.02 (B); approximately 19% earn a GPA of 3.50 or higher.

Figure 8.

Proportion of Student Body within GPA Ranges Fall Quarter

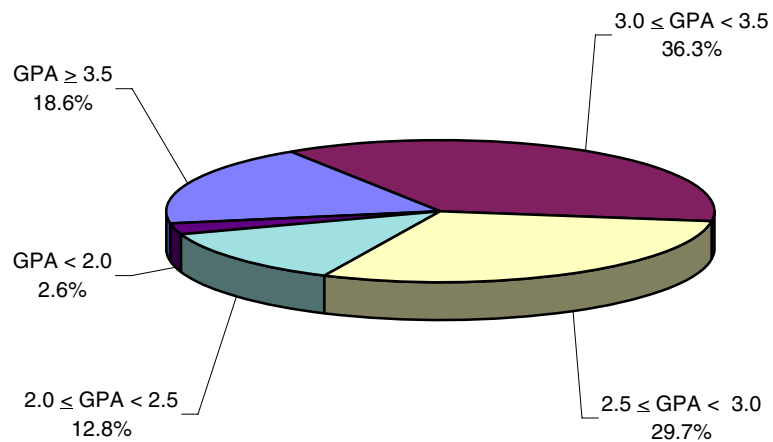


Table 9.

Academic Profile by Class Level **Fall Quarter**

Undergraduates	1995	2000	2001	2002	2003	2004	2005
• Freshman* (N = 3,042)							
Freshman GPA	2.67	2.91	2.96	2.94	2.92	2.88	2.90
GPA \geq 3.5	9.8%	20.4%	23.6%	21.4%	22.1%	20.6%	20.0%
3.0 \leq GPA < 3.5	19.9%	32.2%	32.3%	31.9%	31.9%	30.7%	31.7%
2.5 \leq GPA < 3.0	31.9%	23.6%	23.4%	25.4%	23.3%	23.9%	25.2%
2.0 \leq GPA < 2.5	26.2%	15.0%	13.2%	13.9%	13.7%	14.1%	15.0%
GPA < 2.0	12.2%	8.8%	7.4%	7.5%	9.0%	10.6%	8.1%
• Sophomore (N = 3,634)							
Sophomore GPA	2.96	2.99	3.02	3.01	3.00	2.99	2.98
GPA \geq 3.5	15.0%	16.7%	18.8%	17.0%	17.4%	15.7%	15.7%
3.0 \leq GPA < 3.5	33.0%	34.6%	35.8%	35.8%	36.0%	36.2%	35.3%
2.5 \leq GPA < 3.0	33.7%	32.3%	29.4%	32.0%	29.8%	31.2%	31.9%
2.0 \leq GPA < 2.5	15.7%	14.2%	13.0%	13.3%	14.2%	14.3%	14.2%
GPA < 2.0	2.5%	2.3%	2.9%	2.0%	2.6%	2.7%	2.9%
• Junior (N = 5,733)							
Junior GPA	2.98	3.00	3.03	3.02	3.04	3.05	3.01
GPA \geq 3.5	16.8%	16.9%	18.4%	18.9%	19.2%	19.8%	17.6%
3.0 \leq GPA < 3.5	33.9%	36.1%	35.9%	36.3%	37.3%	37.7%	36.6%
2.5 \leq GPA < 3.0	32.1%	31.6%	31.2%	29.4%	29.9%	28.5%	30.4%
2.0 \leq GPA < 2.5	13.7%	12.8%	12.5%	12.5%	11.2%	12.0%	12.6%
GPA < 2.0	3.5%	2.7%	2.1%	2.8%	2.4%	2.0%	2.8%
• Senior (N = 7,395)							
Senior GPA	3.00	3.03	3.03	3.04	3.05	3.07	3.08
GPA \geq 3.5	16.9%	17.9%	18.3%	19.2%	20.5%	20.6%	21.4%
3.0 \leq GPA < 3.5	35.2%	36.1%	36.4%	35.8%	35.5%	37.9%	37.8%
2.5 \leq GPA < 3.0	32.0%	30.7%	31.2%	30.3%	30.0%	28.5%	28.2%
2.0 \leq GPA < 2.5	14.1%	13.7%	12.5%	13.2%	12.0%	11.6%	11.0%
GPA < 2.0	1.8%	1.7%	1.6%	1.5%	2.0%	1.5%	1.5%
Undergraduate GPA	2.97	3.00	3.02	3.02	3.02	3.03	3.02

There is a positive relationship between student class level and grade point average; as students advance in standing their grade point average generally increases.

* Note: Freshman GPA data reflect grades for Winter quarter of first year enrolled.

Table 10.

Academic Profile by Major Field of Study

Fall Quarter

Undergraduates	1995	2000	2001	2002	2003	2004	2005
• Arts (N = 889)							
Arts GPA	3.09	3.10	3.12	3.17	3.17	3.19	3.20
GPA \geq 3.5	22.3%	18.7%	20.9%	24.3%	25.2%	24.5%	25.6%
3.0 \leq GPA < 3.5	38.3%	45.3%	44.5%	45.2%	42.0%	45.8%	46.9%
2.5 \leq GPA < 3.0	27.1%	25.8%	24.6%	22.3%	24.4%	23.1%	21.4%
2.0 \leq GPA < 2.5	10.7%	8.7%	9.1%	7.6%	7.2%	6.0%	4.6%
GPA < 2.0	1.6%	1.6%	1.0%	0.6%	1.2%	0.6%	1.5%
• Humanities (N = 902)							
Humanities GPA	2.97	3.09	3.14	3.13	3.15	3.15	3.12
GPA \geq 3.5	18.1%	22.1%	34.9%	23.9%	23.6%	26.0%	24.0%
3.0 \leq GPA < 3.5	41.8%	38.0%	39.9%	41.0%	43.1%	41.5%	40.0%
2.5 \leq GPA < 3.0	27.2%	28.7%	27.0%	24.5%	24.7%	22.9%	24.7%
2.0 \leq GPA < 2.5	10.7%	8.8%	6.6%	8.6%	7.9%	7.6%	10.0%
GPA < 2.0	2.2%	2.5%	1.6%	2.0%	0.7%	2.1%	1.2%
• Engineering (N = 4,035)							
Engineering GPA	2.97	2.95	2.99	2.97	2.99	3.00	3.00
GPA \geq 3.5	16.5%	15.6%	16.9%	16.7%	18.0%	18.2%	18.7%
3.0 \leq GPA < 3.5	32.0%	31.4%	32.1%	31.0%	31.8%	32.3%	32.5%
2.5 \leq GPA < 3.0	34.5%	34.6%	34.5%	34.1%	34.0%	32.8%	31.7%
2.0 \leq GPA < 2.5	14.6%	15.7%	14.5%	16.0%	13.7%	14.5%	14.9%
GPA < 2.0	2.4%	2.8%	2.0%	2.1%	2.5%	2.1%	2.2%
• Science/Math (N = 5,522)							
Science/Math GPA	2.96	2.99	3.02	3.02	3.02	3.03	3.02
GPA \geq 3.5	17.2%	18.8%	20.0%	19.7%	20.2%	19.6%	19.2%
3.0 \leq GPA < 3.5	30.9%	31.6%	32.9%	33.5%	32.9%	35.0%	34.3%
2.5 \leq GPA < 3.0	32.4%	31.6%	30.7%	30.3%	29.8%	30.0%	31.1%
2.0 \leq GPA < 2.5	16.0%	15.2%	13.8%	13.8%	14.6%	13.4%	12.4%
GPA < 2.0	3.5%	2.8%	2.7%	2.6%	2.6%	2.0%	3.0%
• Social Science (N = 7,372)							
Social Science GPA	2.95	3.01	3.00	3.02	3.01	3.03	3.02
GPA \geq 3.5	13.5%	15.5%	16.4%	17.2%	17.8%	18.0%	17.6%
3.0 \leq GPA < 3.5	35.5%	38.5%	37.4%	37.6%	37.1%	39.0%	38.3%
2.5 \leq GPA < 3.0	33.0%	30.6%	30.5%	29.9%	29.3%	28.6%	28.9%
2.0 \leq GPA < 2.5	15.0%	13.2%	13.3%	12.6%	12.5%	11.8%	12.7%
GPA < 2.0	3.1%	2.2%	2.3%	2.6%	3.2%	2.5%	2.5%
Undergraduate GPA	2.97	3.00	3.02	3.02	3.02	3.03	3.02

Grade point averages vary by major field of study with the highest average GPAs generally associated with Arts and Humanities majors.



**New
Students**

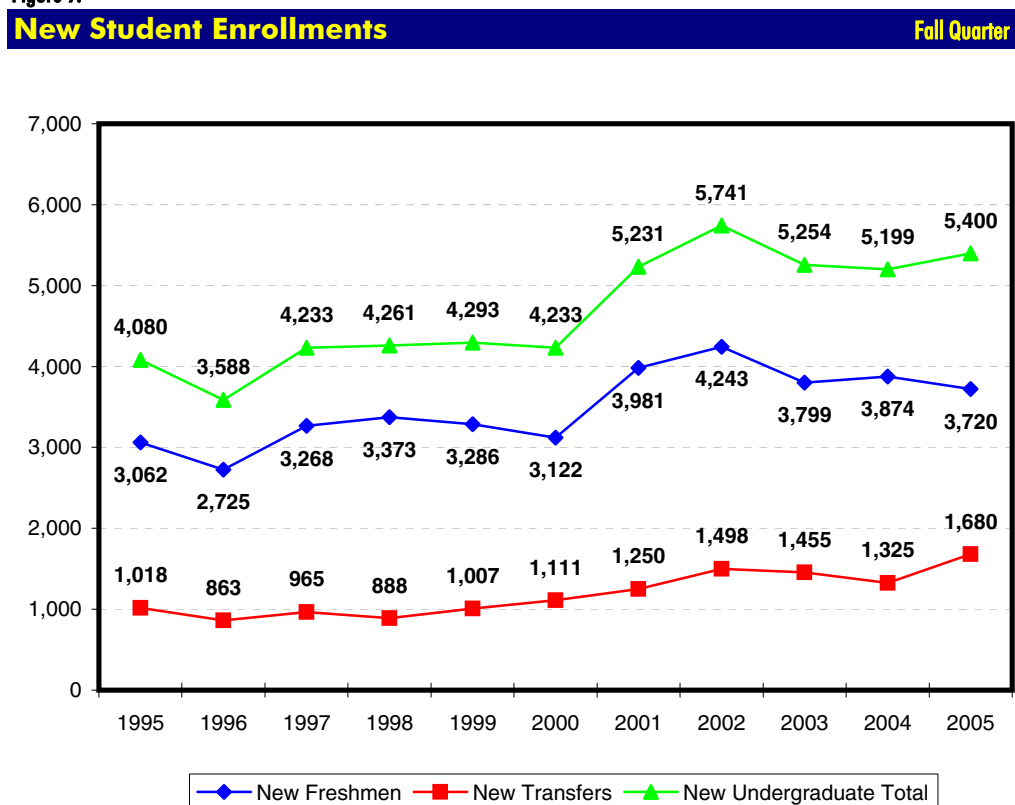
■ New Students: The Past Decade

Table 11.

New Student Enrollments								Fall Quarter
New Students	1995	2000	2001	2002	2003	2004	2005	10 Year Δ
• First-Time Freshmen	3,062 75%	3,122 74%	3,981 76%	4,243 74%	3,799 72%	3,874 75%	3,720 69%	+21%
• New Transfers	1,018 25%	1,111 26%	1,250 24%	1,498 26%	1,455 28%	1,325 25%	1,680 31%	+65%
New Student Total	4,080	4,233	5,231	5,741	5,254	5,199	5,400	+32%

New student enrollments have increased from 4,080 in 1995 to 5,400 in 2005, representing an overall increase of 32%. Of the new student enrollment, just over two-thirds (69%) are first-time freshmen.

Figure 9.





**■ First-Time
Freshmen**

■ First-Time Freshmen

Over forty thousand high school students applied for admission to UCSD for Fall of 2005. Of these students, 44% were admitted to UCSD. A total of 3,720 of the admitted students registered for enrollment, showing a yield of 21%.

Table 12.

Applicants, Admits & Registered Fall Quarter

First-Time Freshmen	1995	2000	2001	2002	2003	2004	2005	10 Year Δ
• Applicants	21,579	35,691	38,187	41,354	43,438	41,330	40,518	+88%
• Admits	12,553	13,718	16,493	17,092	17,618	17,269	17,891	+43%
Admit/App. Rate	58%	38%	43%	41%	41%	42%	44%	
• Registered	3,062	3,122	3,981	4,243	3,799	3,874	3,720	+21%
Reg./Admit Rate	24%	23%	24%	25%	22%	22%	21%	

Figure 10.

Applicants, Admits & Registered Fall Quarter

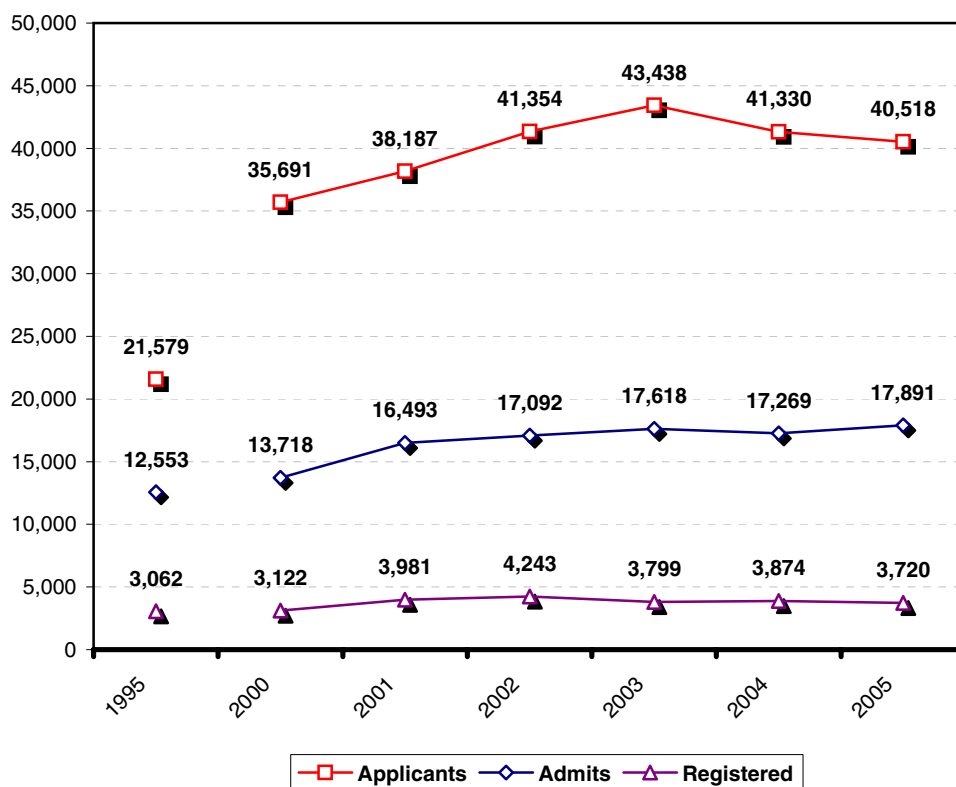


Table 13.

First-Time Freshmen by Gender Fall Quarter

Gender	1995	2000	2001	2002	2003	2004	2005	10 Year Δ
• Female	1,611 53%	1,682 54%	2,152 54%	2,340 55%	2,130 56%	2,190 57%	2,113 57%	+31%
• Male	1,451 47%	1,440 46%	1,829 46%	1,903 45%	1,669 44%	1,684 43%	1,607 43%	+11%
Total	3,062	3,122	3,981	4,243	3,799	3,874	3,720	+21%

At 57%, women continue to represent the majority of first-time freshmen at UCSD.

Figure 11.

First-Time Freshmen by Gender Fall Quarter

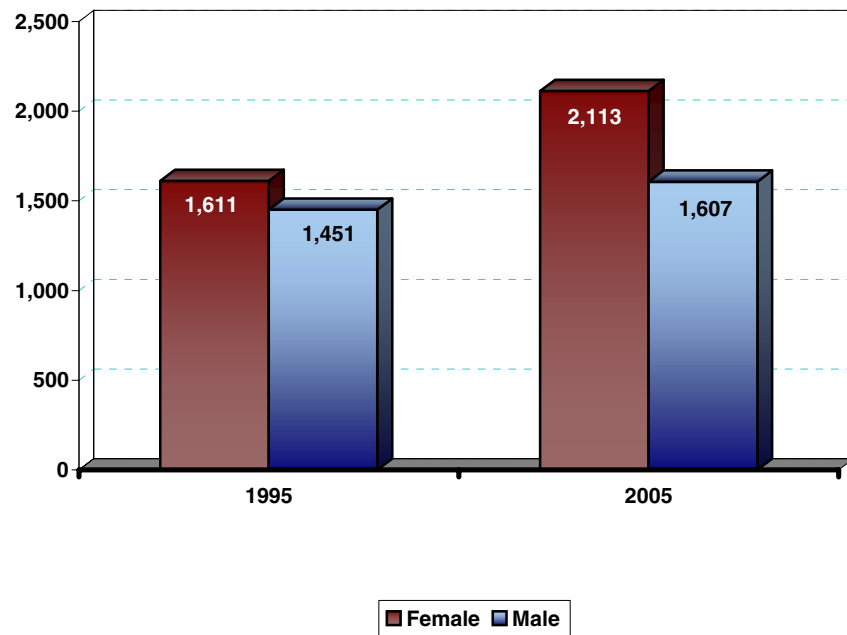


Table 14.

First-Time Freshmen by Ethnicity Fall Quarter

Ethnicity	1995	2000	2001	2002	2003	2004	2005	10 Year Δ
• African-American	42 1%	28 1%	33 1%	48 1%	47 1%	57 1%	43 1%	+2%
• Asian	967 32%	986 32%	1,452 36%	1,502 35%	1,355 36%	1,519 39%	1,600 43%	+65%
• Mexican-American	217 7%	243 8%	254 6%	358 8%	322 8%	355 9%	321 9%	+48%
• Filipino	145 5%	161 5%	202 5%	199 5%	183 5%	216 6%	201 5%	+39%
• Latino	60 2%	67 2%	68 2%	98 2%	97 3%	91 2%	111 3%	+85%
• Native-American	23 1%	13 0%	9 0%	20 0%	14 0%	15 0%	18 0%	-22%
• Caucasian	1,296 42%	1,210 39%	1,472 37%	1,508 36%	1,315 35%	1,163 30%	1,083 29%	-16%
• Other/Missing	312 10%	414 13%	491 12%	510 12%	466 12%	458 12%	343 9%	+10%
Total	3,062	3,122	3,981	4,243	3,799	3,874	3,720	+21%

Since 1995, the proportion of Caucasian students has decreased. At the same time, the proportion of Asian, Mexican-American and Latino students has increased.

Figure 12.

First-Time Freshmen by Ethnicity Fall Quarter

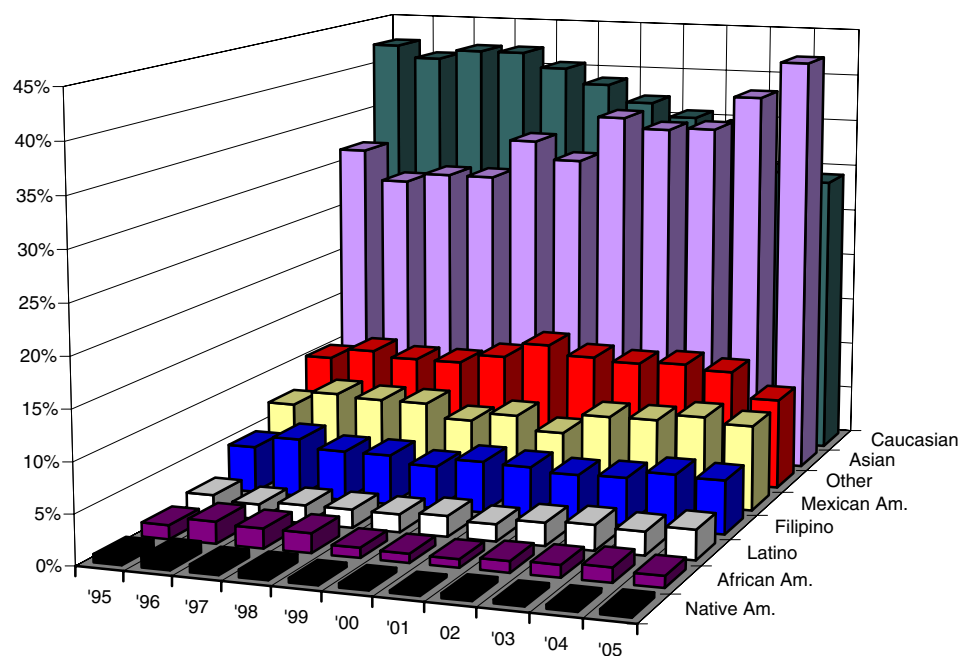


Table 15.

First-Time Freshmen by Major Field of Study Fall Quarter

Major Field of Study	1995	2000	2001	2002	2003	2004	2005	10 Year Δ
• Arts	38 1%	86 3%	115 3%	143 3%	92 2%	81 2%	82 2%	+116%
• Humanities	95 3%	76 2%	102 3%	112 3%	98 3%	119 3%	84 2%	-12%
• Engineering	601 20%	713 23%	1,035 26%	900 21%	738 19%	778 20%	766 21%	+27%
• Science/Math	905 30%	752 24%	847 21%	932 22%	856 23%	976 25%	986 27%	+9%
• Social Science	452 15%	564 18%	697 18%	713 17%	619 16%	741 19%	791 21%	+75%
• Undeclared/Missing/ Special	971 32%	931 30%	1,185 30%	1,443 34%	1,396 37%	1,179 30%	1,011 27%	+4%
Total	3,062	3,122	3,981	4,243	3,799	3,874	3,720	+21%

The most popular declared field of study in 2005 is Science/Math, followed by Engineering and the Social Sciences. Approximately, twenty-seven percent of all new freshmen are considered undeclared upon admission.

Figure 13.

First-Time Freshmen by Major Field of Study Fall Quarter

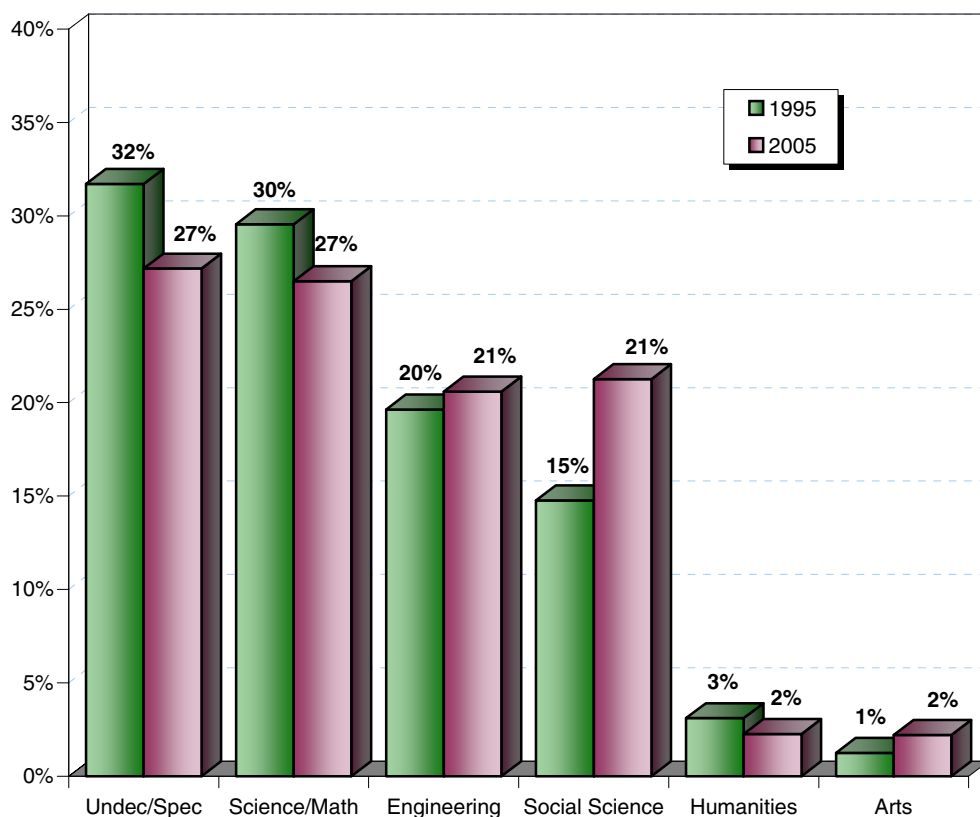


Table 16.

**First-Time Freshmen
by Major Department at Time of Admission** **Fall Quarter**

1995			2005		
Major Department	n	%	Major Department	n	%
Biology	693	22.6%	Biology	616	16.6%
Bioengineering	301	9.8%	Bioengineering	273	7.3%
Psychology	136	4.4%	Chemistry	245	6.6%
Computer Science & Eng. (CSE)	123	4.0%	Mechanical & Aerospace Eng.	186	5.0%
Chemistry	113	3.7%	Political Science	175	4.7%
Applied Mechanics & Eng. (AMES)	103	3.4%	Economics	171	4.6%
Economics	96	3.1%	Psychology	151	4.1%
Political Science	82	2.7%	Computer Science & Eng. (CSE)	112	3.0%
Electrical & Computer Eng. (ECE)	74	2.4%	International Studies	106	2.8%
Communications	59	1.9%	Electrical & Computer Eng. (ECE)	86	2.3%
Literature	56	1.8%	Communications	74	2.0%
Physics	53	1.7%	Mathematics	73	2.0%
Mathematics	37	1.2%	Structural Engineering	73	2.0%
History	32	1.0%	Visual Arts	51	1.4%
Sociology	32	1.0%	Literature	49	1.3%
Anthropology	19	0.6%	Chemical Engineering	36	1.0%
Visual Arts	19	0.6%	History	29	0.8%
Music	12	0.4%	Sociology	27	0.7%
Earth Sciences	9	0.3%	Physics	25	0.7%
Theatre	7	0.2%	Environmental Systems	25	0.7%
Chinese Studies	6	0.2%	Cognitive Science	22	0.6%
Cognitive Science	5	0.2%	Anthropology	17	0.5%
Classical Studies	3	0.1%	Theatre	16	0.4%
Judaic Studies	3	0.1%	Music	15	0.4%
Linguistics	3	0.1%	Human Development	13	0.3%
Subtotal	2,076	64.0%	Subtotal	2,666	71.7%
Other Majors	15	0.5%	Other Majors	43	1.2%
Undeclared Majors	971	31.7%	Undeclared Majors	1,011	27.2%
TOTAL	3,062	100.0%	TOTAL	3,720	100.0%

Similar to 1995, Biology is the most popular declared major among new freshmen in 2005; approximately 17% of all new freshmen report majoring in Biology.

Table 17.

First-Time Freshmen by College								Fall Quarter
College	1995	2000	2001	2002	2003	2004	2005	10 Year Δ
• Revelle	756 25%	717 23%	848 21%	839 20%	695 18%	701 18%	756 20%	+0%
• John Muir	614 20%	586 19%	811 20%	763 18%	655 17%	646 17%	640 17%	+4%
• Thurgood Marshall	653 21%	598 19%	803 20%	748 18%	724 19%	670 17%	667 18%	+2%
• Earl Warren	578 19%	652 21%	776 19%	809 19%	625 16%	658 17%	582 16%	+1%
• Eleanor Roosevelt	461 15%	569 18%	743 19%	804 19%	706 19%	743 19%	608 16%	+32%
• Sixth	NA NA	NA NA	NA NA	280 7%	394 10%	456 12%	467 13%	NA
Total	3,062	3,122	3,981	4,243	3,799	3,874	3,720	+21%

Almost one-half of all first-time freshmen come to UCSD from the Los Angeles area, followed by the San Francisco region.

Table 18.

First-Time Freshmen by Home Location								Fall Quarter
Home Location	1995	2000	2001	2002	2003	2004	2005	10 Year Δ
• San Diego	671 22%	538 17%	699 18%	754 18%	630 17%	628 16%	503 14%	-25%
• Los Angeles	1,399 46%	1,416 45%	1,641 41%	1,852 44%	1,694 45%	1,806 47%	1,736 47%	+24%
• San Francisco	553 18%	587 19%	879 22%	923 22%	785 21%	806 21%	820 22%	+48%
• Other CA	314 10%	445 14%	543 14%	577 14%	508 13%	439 11%	413 11%	+32%
• Out-of-State	94 3%	97 3%	131 3%	66 2%	149 4%	111 3%	156 4%	+66%
• Foreign	31 1%	39 1%	88 2%	71 2%	33 1%	84 2%	92 2%	+197%
Total	3,062	3,122	3,981	4,243	3,799	3,874	3,720	+21%

Table 19.

First-Time Freshmen by 1st Generation College Status Fall Quarter

College Status	1995	2000	2001	2002	2003	2004	2005	10 Year Δ
• First Generation	624 20%	739 24%	858 22%	876 21%	1,072 28%	1,118 29%	1,037 28%	+66%
• Not First Generation	2,438 80%	2,383 76%	3,123 78%	3,367 79%	2,727 72%	2,756 71%	2,683 72%	+10%
Total	3,062	3,122	3,981	4,243	3,799	3,874	3,720	+21%

The majority (72%) of new freshmen have at least one parent who has graduated from a two-year junior college or four-year college/university.

Table 20.

First-Time Freshmen by Income Group Fall Quarter

Income	1995*	2000	2001	2002	2003	2004	2005	10 Year Δ
• High (≥\$98,401)	784 26%	704 23%	1,114 28%	1,054 25%	938 25%	796 21%	887 24%	+13%
• Medium High (\$65,601 - \$98,400)	583 19%	429 14%	584 15%	560 13%	479 13%	443 11%	468 13%	-20%
• Medium Low (\$32,801 - \$65,600)	668 22%	698 22%	842 21%	891 21%	810 21%	826 21%	792 21%	+19%
• Low (≤\$32,800)	657 21%	629 20%	659 17%	932 22%	825 22%	931 24%	854 23%	+30%
• Missing	370 12%	662 21%	782 20%	806 19%	747 20%	878 23%	719 19%	+94%
Total	3,062	3,122	3,981	4,243	3,799	3,874	3,720	+21%

* 1995 Income Categories:
 High = Income ≥ \$87,001
 Medium High = \$58,001-\$87,000
 Medium Low = \$29,001-\$58,000
 Low = Income ≤ \$29,000

Table 21.

First-Time Freshmen by Athletic Status Fall Quarter

College Status	1995	2000	2001	2002	2003	2004	2005	10 Year Δ
• Athlete	NA NA	NA NA	NA NA	234 6%	200 5%	162 4%	159 4%	NA
• Non-Athlete	NA NA	NA NA	NA NA	4,009 106%	3,599 93%	3,712 96%	3,561 96%	NA
Total	3,062	3,122	3,981	4,243	3,799	3,874	3,720	+21%


Table 22.

Major* Feeder High Schools for First-time Freshmen Fall Quarter

High School	City	Number from H.S. Registered at UCSD in Fall 2005	Percent of UCSD's Total Freshman Enrollment	Average H.S. GPA of Registered Freshmen	Average SAT I of Registered Freshmen	Average SAT II of Registered Freshmen	High School Quintile Rank
Diamond Bar High School	Diamond Bar	37	1.0%	3.91	1307	1318	First
Lynbrook High School	San Jose	36	1.0%	3.90	1358	1391	First
Arcadia High School	Arcadia	32	0.9%	3.86	1322	1350	First
Mission San Jose High School	Fremont	31	0.8%	3.88	1347	1404	First
Lowell High School	San Francisco	30	0.8%	3.71	1295	1297	First
Alhambra High School	Martinez	27	0.7%	4.28	1235	1250	Third
Mira Mesa High School	San Diego	26	0.7%	4.06	1177	1161	Second
Walnut High School	Walnut	26	0.7%	3.87	1326	1362	First
San Gabriel High School	San Gabriel	25	0.7%	3.83	1172	1185	Fourth
Monta Vista High School	Cupertino	25	0.7%	3.79	1359	1435	First
Cerritos High School	Cerritos	24	0.6%	3.81	1305	1351	First
Mark Keppel High School	Alhambra	22	0.6%	3.77	1238	1254	First
Torrey Pines High School	San Diego	22	0.6%	3.90	1334	1368	First
Granada Hills High School	Granada Hills	22	0.6%	3.87	1285	1277	First
Mira Costa High School	Manhattan Beach	22	0.6%	3.95	1321	1310	First
Henry M. Gunn Senior High School	Palo Alto	21	0.6%	3.83	1388	1409	First
Saratoga High School	Saratoga	20	0.5%	3.86	1408	1438	First
Sunny Hills High School	Fullerton	19	0.5%	3.81	1346	1342	First
Crescenta Valley High School	La Crescenta	19	0.5%	3.79	1311	1304	First
University High School	Fresno	19	0.5%	4.20	1310	1260	First
Palos Verdes Penn. High School	Rolling Hills	19	0.5%	3.81	1312	1355	First
Van Nuys High School	Van Nuys	19	0.5%	3.80	1234	1233	Fourth
Eastlake High School	Chula Vista	18	0.5%	4.04	1251	1282	Second
Davis Senior High School	Davis	18	0.5%	3.91	1351	1336	First
Long Beach Polytechnic	Long Beach	18	0.5%	4.00	1169	1182	Second
Temple City High School	Temple City	18	0.5%	3.87	1292	1272	Second
Fountain Valley High School	Fountain Valley	17	0.5%	3.84	1274	1279	First
Troy High School	Fullerton	17	0.5%	3.66	1398	1423	First
Rancho Bernardo High School	San Diego	17	0.5%	4.05	1308	1316	First
John A. Rowland High School	Rowland Heights	17	0.5%	3.83	1295	1296	First
Leland High School	San Jose	17	0.5%	3.97	1299	1337	First
Beverly Hills High School	Beverly Hills	16	0.4%	3.73	1357	1371	First
Castro Valley High School	Castro Valley	16	0.4%	3.98	1253	1241	First
Northwood High School	Irvine	16	0.4%	3.85	1349	1376	First
Reseda High School	Reseda	16	0.4%	3.79	1206	1241	Fourth
Mount Carmel High School	San Diego	16	0.4%	4.01	1314	1329	First
El Camino Real High School	Woodland Hills	16	0.4%	3.79	1285	1288	First
Palisades Charter High School	Pacific Palisades	15	0.4%	3.72	1279	1297	Second
Scripps Ranch High School	San Diego	15	0.4%	4.10	1270	1265	First
San Marino High School	San Marino	15	0.4%	3.80	1319	1344	First
South High School	Torrance	15	0.4%	3.84	1306	1311	First
Subtotal (Number of High Schools = 41)		856	23.0%				
Other High Schools (Number of High Schools = 787)		2,864	77.0%				
Total (Number of High Schools = 828)		3,720	100.0%				

* Fifteen or more students

Diamond Bar High School in the Los Angeles area and Lynbrook High School in the San Jose area top the list of major feeder schools for the Fall 2005 freshman cohort.



**High School
Grades and
SAT Scores**

Academic Preparation: A Decade of Change

Academic preparation, as measured by high school GPA and SAT scores, have improved over the past decade. The average SAT score in 2005 is 1253 compared to 1136 in 1995.

Table 23.

Freshman Cohort by HS GPA and SAT Score Averages Fall Quarter

First-Time Freshmen	1995	2000	2001	2002	2003 ²	2004	2005
• HS GPA ¹	3.86	3.99	3.95	3.94	3.96	3.96	3.94
• SAT I (Verbal & Math)	1136	1259	1264	1239	1257	1242	1253
• SAT II (English & Math)	1111	1255	1262	1252	1258	1257	1257

¹ GPAs may exceed 4.0 with credit given for honors courses.

² SAT I scores reflect the higher of ACT scores converted to SAT Scores.

Table 24.

Freshman Cohort by Academic Indicator Ranges Fall Quarter

High School GPA Range	Percentage in Range		SAT I Composite Score Range	Percentage in Range	
	1995	2005		1995	2005
• 4.0 - High	39%	48%	• 1500 - 1600	0%	2%
• 3.90 - 3.99	10%	13%	• 1300 - 1499	15%	39%
• 3.60 - 3.89	31%	29%	• 1200 - 1299	21%	29%
• 3.30 - 3.59	17%	9%	• 1000 - 1199	47%	25%
• Low - 3.29	3%	1%	• Low - 999	17%	5%
Total	100%	100%	Total	100%	100%

Number of Honors Courses: 10th & 11th Grade	Percentage in Range		Number of College Preparatory (A-G) Courses*	Percentage in Range	
	1995	2005		1995	2005
• More than 8	30%	5%	• More than 50	9%	27%
• 7 - 8	19%	8%	• 46 - 50	21%	32%
• 5 - 6	18%	16%	• 41 - 45	37%	31%
• 1 - 4	27%	54%	• 36 - 40	28%	10%
• 0	6%	18%	• 30 - 35	4%	1%
Total	100%	100%	Total	100%	100%

* The G requirement went into effect in 2003.

Figure 14.

Academic Preparation: 1995-2005 Comparison Fall Quarter

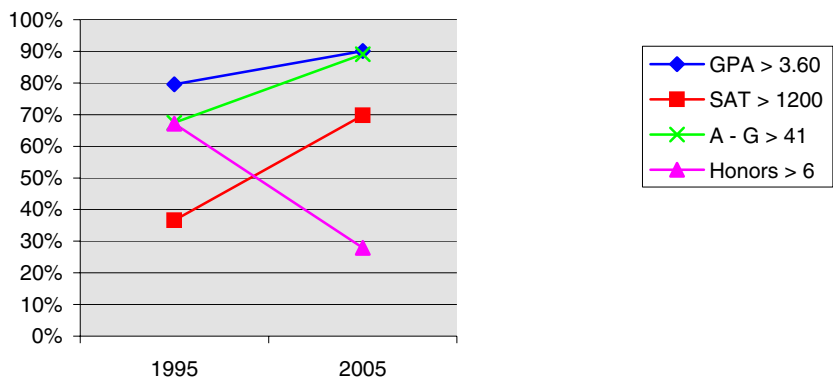


Table 25.

High School GPA¹ by Gender, Ethnicity, Major Field of Study, Home Location, 1st Generation College Status & Income Fall Quarter

First-Time Freshmen GPA	1995 ² Average	2000 Average	2001 Average	2002 Average	2003 Average	2004 Average	2005 Average
• Gender							
Female	3.89	4.00	3.97	3.95	3.97	3.98	3.95
Male	3.84	3.97	3.93	3.91	3.93	3.93	3.91
• Ethnicity							
African-American	3.80	4.01	3.94	3.76	3.90	3.90	3.88
Asian	3.84	3.92	3.91	3.89	3.91	3.92	3.89
Mexican-American	3.71	3.98	3.95	3.87	3.88	3.89	3.88
Filipino	3.94	4.08	3.97	4.02	4.06	4.02	4.03
Latino	3.87	4.04	3.94	3.87	3.94	3.95	3.90
Native-American	3.72	3.96	3.93	4.02	4.12	4.02	4.04
Caucasian	3.90	4.03	4.00	3.99	4.01	4.02	4.00
• Major Field of Study							
Arts	3.84	3.94	3.93	3.90	3.93	3.91	3.87
Humanities	3.78	3.96	3.89	3.89	3.93	3.91	3.87
Engineering	3.89	4.03	3.99	3.99	4.02	3.99	3.97
Science/Math	3.91	4.02	3.99	3.99	3.99	4.01	3.98
Social Science	3.81	3.93	3.91	3.87	3.90	3.91	3.88
Undec./Special	3.84	3.97	3.93	3.91	3.93	3.94	3.92
• Home Location							
San Diego	3.92	4.04	3.99	3.97	3.99	4.00	4.00
Los Angeles	3.84	3.95	3.92	3.91	3.92	3.93	3.90
San Francisco	3.83	3.95	3.92	3.91	3.95	3.95	3.92
Other CA	3.93	4.06	4.02	4.01	4.03	4.04	4.01
Out of State	3.94	4.10	4.10	4.07	4.04	4.07	4.00
• First Generation College Status							
First Generation	3.84	3.95	3.93	3.88	3.90	3.91	3.88
Not First Generation	3.87	4.00	3.96	3.95	3.98	3.98	3.96
• Income Group							
High (≥\$98,401)	3.86	4.01	3.97	3.97	4.01	4.00	3.98
Med. High (\$65,601-\$98,400)	3.87	4.02	4.00	3.99	4.00	4.02	4.00
Med. Low (\$32,801-\$65,600)	3.89	3.98	3.92	3.91	3.94	3.94	3.91
Low (≤\$32,800)	3.84	3.94	3.90	3.86	3.86	3.88	3.84
Missing	NA	3.99	3.96	3.97	3.99	3.99	3.98
• Athletes							
Athletes	NA	NA	NA	3.94	3.92	3.91	3.91
Non-Athletes	NA	NA	NA	3.94	3.96	3.96	3.94
Total	3.86	3.99	3.95	3.94	3.96	3.96	3.94

Average high school GPAs vary somewhat by gender, ethnicity, and major field of study. For example, the average GPA of females is typically higher than that of males.

¹ GPAs may exceed 4.0 with credit given for honors courses.

² 1995 Income Categories: High = Income ≥ \$87,001 Medium Low = \$29,001-\$58,000
 Medium High = \$58,001-\$87,000 Low = Income ≤ \$29,000

Table 26.

SAT¹ I Scores by Gender, Ethnicity, Major Field of Study, Home Location, 1st Generation College Status & Income Fall Quarter

First-Time Freshmen SAT I	1995 ² Average	2000 Average	2001 Average	2002 Average	2003 Average	2004 Average	2005 Average
• Gender							
Female	1105	1233	1239	1211	1228	1217	1230
Male	1171	1289	1293	1274	1293	1276	1282
• Ethnicity							
African-American	1026	1165	1155	1107	1119	1109	1149
Asian	1116	1267	1273	1253	1266	1258	1267
Mexican-American	992	1129	1142	1092	1104	1091	1119
Filipino	1072	1192	1209	1162	1208	1184	1194
Latino	1092	1204	1201	1144	1197	1167	1152
Native-American	1068	1240	1273	1255	1264	1261	1217
Caucasian	1179	1284	1282	1270	1290	1272	1285
• Major Field of Study							
Arts	1168	1245	1246	1207	1239	1235	1238
Humanities	1148	1257	1276	1239	1257	1265	1289
Engineering	1156	1290	1297	1276	1295	1275	1289
Science/Math	1133	1247	1259	1228	1249	1240	1240
Social Science	1106	1235	1240	1220	1239	1222	1243
Undec./Special	1138	1260	1253	1236	1249	1234	1245
• Home Location							
San Diego	1078	1202	1208	1170	1197	1182	1212
Los Angeles	1132	1259	1266	1240	1250	1242	1246
San Francisco	1196	1296	1301	1288	1306	1291	1286
Other CA	1146	1262	1250	1237	1257	1215	1240
Out of State	1219	1318	1337	1325	1328	1321	1308
• First Generation College Status							
First Generation	1030	1174	1184	1174	1168	1160	1169
Not First Generation	1164	1285	1285	1256	1292	1276	1285
• Income Group							
High (≥\$98,401)	1188	1309	1303	1288	1311	1289	1305
Med. High (\$65,601-\$98,400)	1163	1272	1267	1260	1272	1251	1264
Med. Low (\$32,801-\$65,600)	1130	1247	1236	1217	1233	1219	1232
Low (≤\$32,800)	1031	1166	1195	1150	1166	1161	1164
Missing	NA	1298	1291	1288	1304	1303	1310
• Athletes							
Athletes	NA	NA	NA	1258	1245	1237	1263
Non-Athletes	NA	NA	NA	1238	1245	1243	1253
Total	1136	1259	1264	1239	1257	1242	1253

¹ SAT scores were "recentered" starting with the 1996 freshman cohort.

² 1995 Income Categories: High = Income ≥ \$87,001 Medium Low = \$29,001-\$58,000
 Medium High = \$58,001-\$87,000 Low = Income ≤ \$29,000

The average SAT composite score of males is typically higher than that of females. Average SAT scores, in general, were slightly higher in 2005 than in the preceding year.

Table 27.

SAT¹ II Scores by Gender, Ethnicity, Major Field of Study, Home Location, 1st Generation College Status & Income Fall Quarter

First-Time Freshmen SAT II	1995 ² Average	2000 Average	2001 Average	2002 Average	2003 Average	2004 Average	2005 Average
• Gender							
Female	1091	1234	1242	1231	1232	1238	1239
Male	1132	1280	1285	1278	1291	1281	1280
• Ethnicity							
African-American	1002	1164	1149	1099	1102	1107	1138
Asian	1098	1261	1279	1269	1277	1276	1277
Mexican-American	975	1124	1131	1099	1089	1086	1120
Filipino	1065	1181	1193	1160	1199	1198	1199
Latino	1082	1192	1189	1147	1192	1173	1151
Native-American	1042	1216	1283	1244	1252	1249	1208
Caucasian	1144	1282	1277	1284	1283	1286	1280
Other	1143	1284	1279	1286	1298	1311	1300
• Major Field of Study							
Arts	1116	1247	1257	1214	1234	1239	1229
Humanities	1128	1246	1263	1257	1240	1270	1290
Engineering	1127	1288	1299	1284	1295	1285	1289
Science/Math	1116	1242	1255	1243	1256	1257	1249
Social Science	1082	1232	1235	1234	1233	1237	1242
Undec./Special	1107	1255	1250	1251	1253	1249	1251
• Home Location							
San Diego	1054	1191	1199	1182	1189	1188	1214
Los Angeles	1106	1252	1263	1249	1255	1256	1249
San Francisco	1166	1300	1316	1313	1321	1316	1303
Other CA	1118	1261	1240	1244	1238	1225	1231
Out of State	1202	1323	1325	1327	1305	1329	1296
• First Generation College Status							
First Generation	1030	1166	1178	1176	1165	1168	1169
Not First Generation	1131	1282	1285	1272	1294	1293	1291
• Income Group							
High (≥\$98,401)	1153	1310	1307	1307	1317	1308	1314
Med. High (\$65,601-\$98,400)	1131	1271	1267	1268	1267	1269	1266
Med. Low (\$32,801-\$65,600)	1098	1238	1226	1226	1229	1227	1233
Low (≤\$32,800)	1032	1161	1193	1161	1170	1174	1164
Missing	NA	1293	1291	1305	1304	1319	1316
• Athletes							
Athletes	NA	NA	NA	1262	1245	1237	1237
Non-Athletes	NA	NA	NA	1251	1258	1258	1258
Total	1111	1255	1262	1252	1258	1257	1257

Given the high correlation between the SAT and SAT II, average SAT II scores typically show the same pattern of variation by student characteristics as the SAT.

¹ SAT scores were "recentered" starting with the 1996 freshman cohort.

² 1995 Income Categories: High = Income ≥ \$87,001 Medium High = \$58,001-\$87,000 Medium Low = \$29,001-\$58,000 Low = Income ≤ \$29,000

Table 28.

Intercampus Comparison¹ of Average SAT I Composite Scores Fall Quarter

UC Campus	1995	1996 ²	1997	1998	1999	2000	2001	2002 ³	2003 ³	2004 ³	2005 ³
• Berkeley	1218	1296	1311	1330	1305	1308	1293	1303	1303	1314	1324
• Davis	1070	1162	1162	1149	1165	1170	1163	1180	1184	1170	1187
• Irvine	1015	1121	1117	1126	1155	1171	1167	1179	1176	1209	1192
• Los Angeles	1136	1228	1239	1263	1262	1266	1256	1264	1278	1290	1284
• Merced ⁴	NA	NA	NA	NA	NA	NA	NA	NA	NA	NA	1070
• Riverside	975	1046	1062	1061	1057	1056	1068	1057	1064	1080	1078
• San Diego	1136	1221	1233	1240	1250	1259	1264	1239	1245	1242	1253
• Santa Barbara	1020	1116	1143	1158	1176	1181	1183	1172	1187	1184	1203
• Santa Cruz	1036	1134	1137	1135	1150	1143	1150	1138	1143	NA	1159
Systemwide	1088	1180	1188	1196	1198	1199	1197	1195	1199	1208	1211

¹ Source: University of California, Frequency Distribution of College Entrance Examination Board (CEEB) Test Scores For Entering Freshmen CSS 050B.

² From 1996, recentered SAT scores are reported.

³ 2002-2005 data based on personal contact with representatives for each UC Campus and are subject to change.

⁴ Merced enrolled its first freshman class in Fall 2005.

When compared on the basis of average SAT scores, UCSD ranks among the top three universities in the UC system.

Table 29.

UCSD's Position Relative to Other UC Campuses on SAT I Scores Fall Quarter

Rank	1995	1996	1997	1998	1999	2000	2001	2002	2003	2004	2005
• 1	UCB	UCB	UCB	UCB	UCB	UCB	UCB	UCB	UCB	UCB	UCB
• 2	UCSD	UCLA	UCLA	UCLA	UCLA	UCLA	UCSD	UCLA	UCLA	UCLA	UCLA
• 3	UCLA	UCSD	UCSD	UCSD	UCSD	UCSD	UCLA	UCSD	UCSD	UCSD	UCSD
• 4	UCD	UCD	UCD	UCSB	UCSB	UCSB	UCSB	UCD	UCSB	UCI	UCSB
• 5	UCSC	UCSC	UCSB	UCD	UCD	UCI	UCI	UCI	UCD	UCSB	UCI
• 6	UCI	UCI	UCSC	UCSC	UCI	UCD	UCD	UCSB	UCI	UCD	UCD
• 7	UCSB	UCSB	UCI	UCI	UCSC	UCSC	UCSC	UCSC	UCSC	UCSC	UCSC
• 8	UCR	UCR	UCR	UCR	UCR	UCR	UCR	UCR	UCR	UCR	UCR
• 9											UCM



**New
Transfer
Students**

■ New Transfer Students

Over nine thousand transfer students applied for admission to UCSD. This year marks the largest entering transfer cohort with 1,680 newly enrolled transfer students, representing a 65% increase over the past decade.

Table 30.

New Transfers: Applicants, Admits & Registered Fall Quarter

New Transfers	1995	2000	2001	2002	2003	2004	2005	10 Year Δ
• Applicants	4,176	6,375	7,041	7,890	8,854	9,825	9,291	+122%
• Admits	2,783	3,613	4,412	4,860	5,058	4,824	5,939	+113%
Admit/Applicant Rate	67%	57%	63%	62%	57%	49%	64%	
• Registered	1,018	1,111	1,250	1,498	1,455	1,325	1,680	+65%
Registered/Admit Rate	37%	31%	28%	31%	29%	27%	28%	

Figure 15.

New Transfers: Applicants, Admits & Registered Fall Quarter

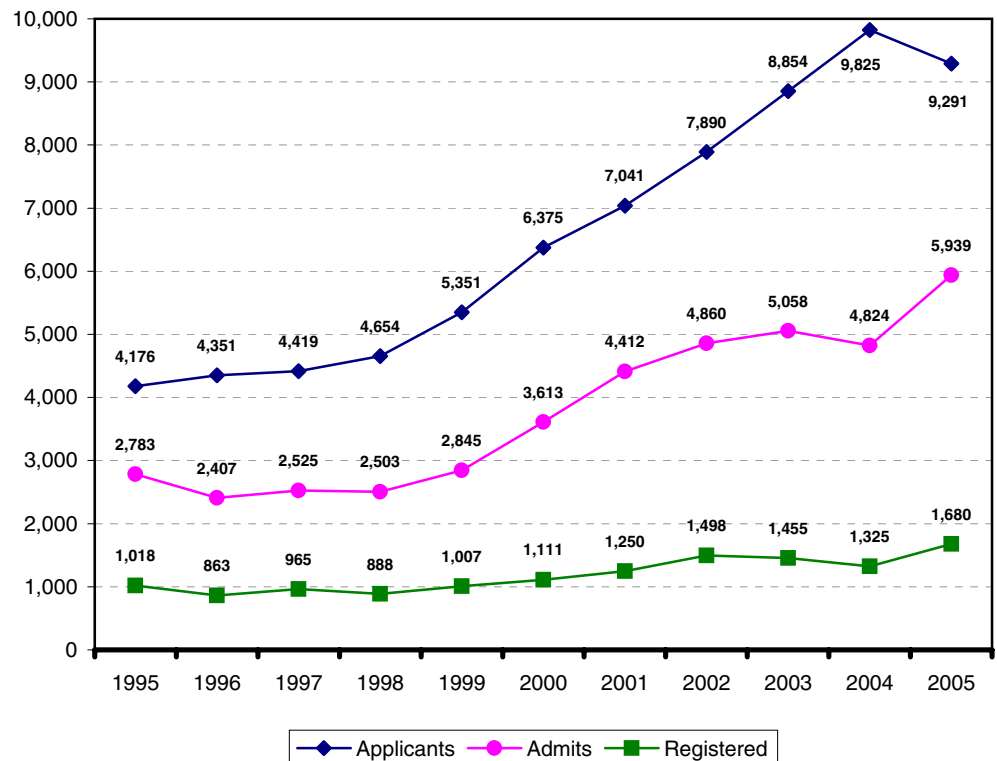


Table 31.

New Transfers by Gender Fall Quarter

Gender	1995	2000	2001	2002	2003	2004	2005	10 Year Δ
• Female	490 48%	555 50%	588 47%	724 48%	676 46%	631 48%	785 47%	+60%
• Male	528 52%	556 50%	662 53%	774 52%	779 54%	694 52%	895 53%	+70%
Total	1,018	1,111	1,250	1,498	1,455	1,325	1,680	+65%

Unlike the freshman cohort, at 53%, male transfer students outnumber women by four percent.

Figure 16.

New Transfers by Gender Fall Quarter

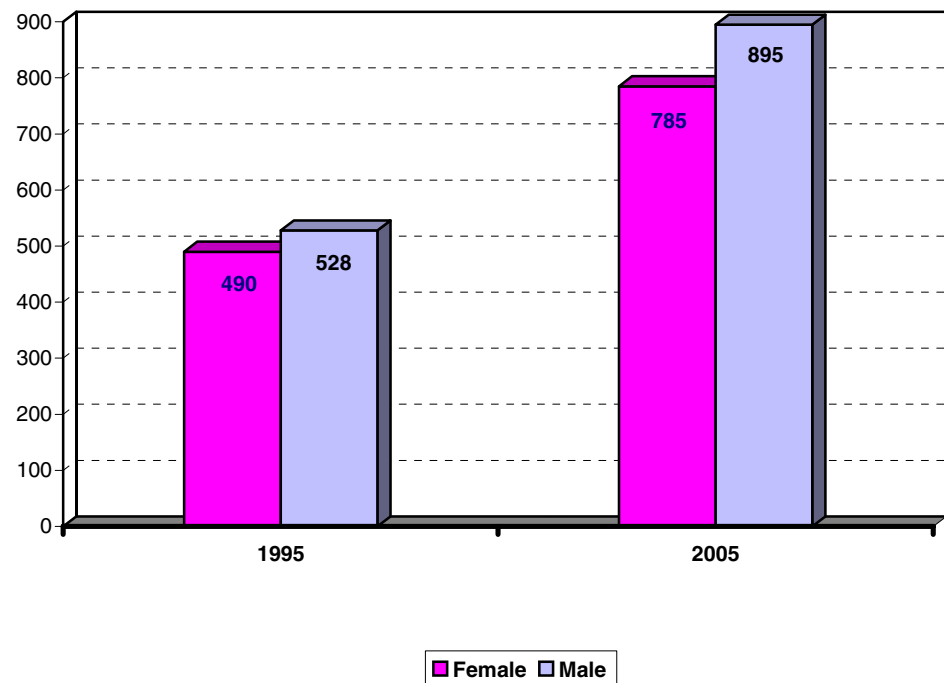


Table 32.

New Transfers by Ethnicity

Fall Quarter

Ethnicity	1995	2000	2001	2002	2003	2004	2005	10 Year Δ
• African-American	17 2%	18 2%	23 2%	24 2%	22 2%	24 2%	27 2%	+59%
• Asian	232 23%	279 25%	330 26%	491 33%	481 33%	387 29%	549 33%	+137%
• Mexican-American	106 10%	101 9%	106 8%	121 8%	102 7%	112 8%	138 8%	+30%
• Filipino	49 5%	49 4%	56 4%	54 4%	49 3%	55 4%	69 4%	+41%
• Latino	21 2%	34 3%	38 3%	44 3%	43 3%	44 3%	39 2%	+86%
• Native-American	11 1%	4 0%	10 1%	8 1%	10 1%	5 0%	9 1%	-18%
• Caucasian	477 47%	459 41%	508 41%	538 36%	502 35%	472 36%	600 36%	+26%
• Other/Undeclared	105 10%	167 15%	179 14%	218 15%	246 17%	226 17%	249 15%	+137%
Total	1,018	1,111	1,250	1,498	1,455	1,325	1,680	+65%

Over the past decade the proportion of African-American, Latino and Native-American students has remained, relatively, unchanged. At the same time, the proportion of Asian and students self-classified as "Other" has increased. The proportion of Mexican-American, Filipino, and Caucasian students has declined.

Table 33.

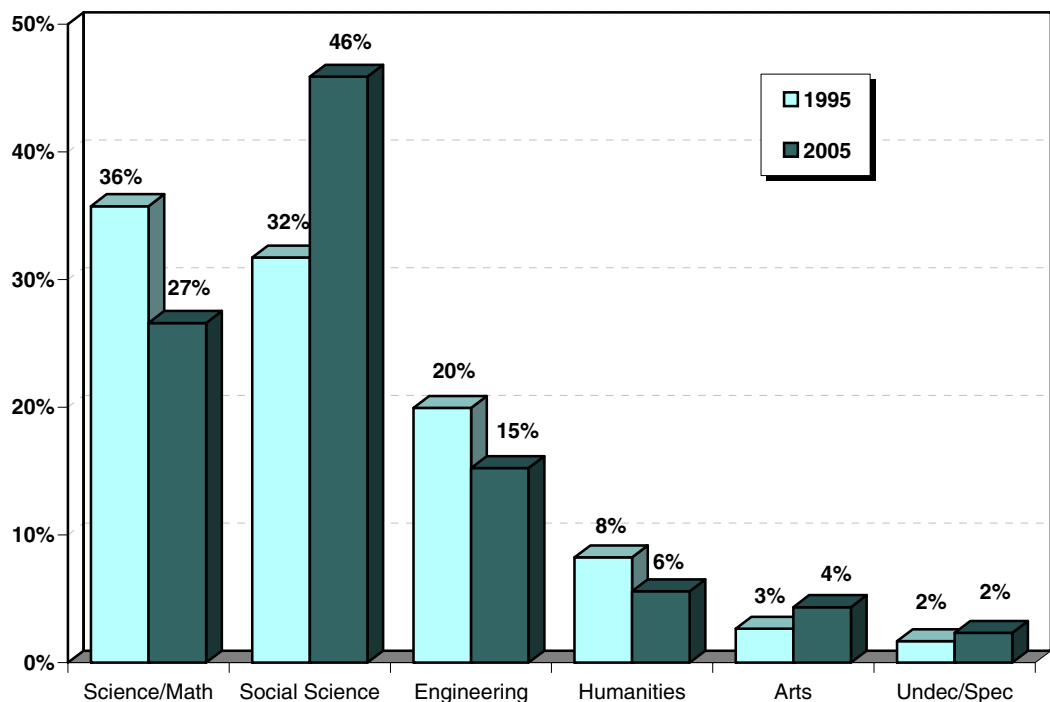
New Transfers by Major Field of Study Fall Quarter

Major Field of Study	1995	2000	2001	2002	2003	2004	2005	10 Year Δ
• Arts	27 3%	73 7%	101 8%	110 7%	102 7%	68 5%	73 4%	+170%
• Humanities	84 8%	80 7%	73 6%	96 6%	86 6%	71 5%	94 6%	+12%
• Engineering	203 20%	278 25%	273 22%	333 22%	356 24%	220 17%	256 15%	+26%
• Science/Math	364 36%	225 20%	279 22%	303 20%	231 16%	295 22%	447 27%	+23%
• Social Science	323 32%	438 39%	503 40%	607 41%	619 43%	641 48%	771 46%	+139%
• Undeclared/ Special	17 2%	17 2%	21 2%	49 3%	61 4%	30 2%	39 2%	+129%
Total	1,018	1,111	1,250	1,498	1,455	1,325	1,680	+65%

Almost one-half of all new transfer students declared a major in the Social Sciences.

Figure 17.

New Transfers by Major Field of Study Fall Quarter



Ninety-three percent of new transfer students attended a California Community College prior to enrolling at UCSD. The largest number of new transfer students come from either Los Angeles or San Diego county. The proportion of transfer students from a foreign country has increased dramatically over the past decade.

Table 34.

New Transfers by Transfer Institution Fall Quarter

Transfer Institution	1995	2000	2001	2002	2003	2004	2005	10 Year Δ
• California Community Colleges	940 92%	1,057 95%	1,164 93%	1,381 92%	1,380 95%	1,215 92%	1,567 93%	+67%
Transfer Admission Guarantee (TAG)	246 24%	171 15%	156 12%	201 13%	175 12%	294 22%	327 19%	+33%
Non-TAG	694 68%	886 80%	1,008 81%	1,297 87%	1,280 88%	921 70%	1,240 74%	+79%
• Inter-campus Transfer/ Other 4 yr. College	53 5%	48 4%	75 6%	87 6%	69 5%	104 8%	107 6%	+102%
• Other/Unknown	25 2%	6 1%	11 1%	30 2%	6 0%	6 0%	6 0%	-76%
Total	1,018	1,111	1,250	1,498	1,455	1,325	1,680	+65%

Table 35.

New Transfers by Home Location Fall Quarter

Home Location	1995	2000	2001	2002	2003	2004	2005	10 Year Δ
• San Diego	490 48%	362 33%	374 30%	461 31%	411 28%	465 35%	523 31%	+7%
• Los Angeles	297 29%	354 32%	386 31%	440 29%	426 29%	393 30%	545 32%	+84%
• San Francisco	111 11%	182 16%	218 17%	231 15%	271 19%	218 16%	303 18%	+173%
• Other California	72 7%	136 12%	147 12%	161 11%	143 10%	106 8%	138 8%	+92%
• Out-of-State	7 1%	6 1%	6 0%	10 1%	11 1%	8 1%	9 1%	+29%
• Foreign	41 4%	71 6%	119 10%	195 13%	193 13%	135 10%	162 10%	+295%
Total	1,018	1,111	1,250	1,498	1,455	1,325	1,680	+65%

Table 36.

New Transfers by Undergraduate College Fall Quarter

Undergraduate College	1995	2000	2001	2002	2003	2004	2005	10 Year Δ
• Revelle	151 15%	160 14%	217 17%	264 18%	223 15%	190 14%	282 17%	+87%
• John Muir	260 26%	283 25%	270 22%	314 21%	333 23%	242 18%	411 24%	+58%
• Thurgood Marshall	196 19%	247 22%	277 22%	338 23%	309 21%	306 23%	376 22%	+92%
• Earl Warren	319 31%	281 25%	282 23%	327 22%	369 25%	305 23%	254 15%	-20%
• Eleanor Roosevelt	92 9%	140 13%	204 16%	255 17%	221 15%	213 16%	247 15%	+168%
• Sixth	NA NA	NA NA	NA NA	NA NA	NA NA	69 5%	110 7%	NA
Total	1,018	1,111	1,250	1,498	1,455	1,325	1,680	+65%

In 2005, John Muir and Thurgood Marshall Colleges enrolled the largest number of new transfer students.

Figure 18.

New Transfers by Undergraduate College Fall Quarter

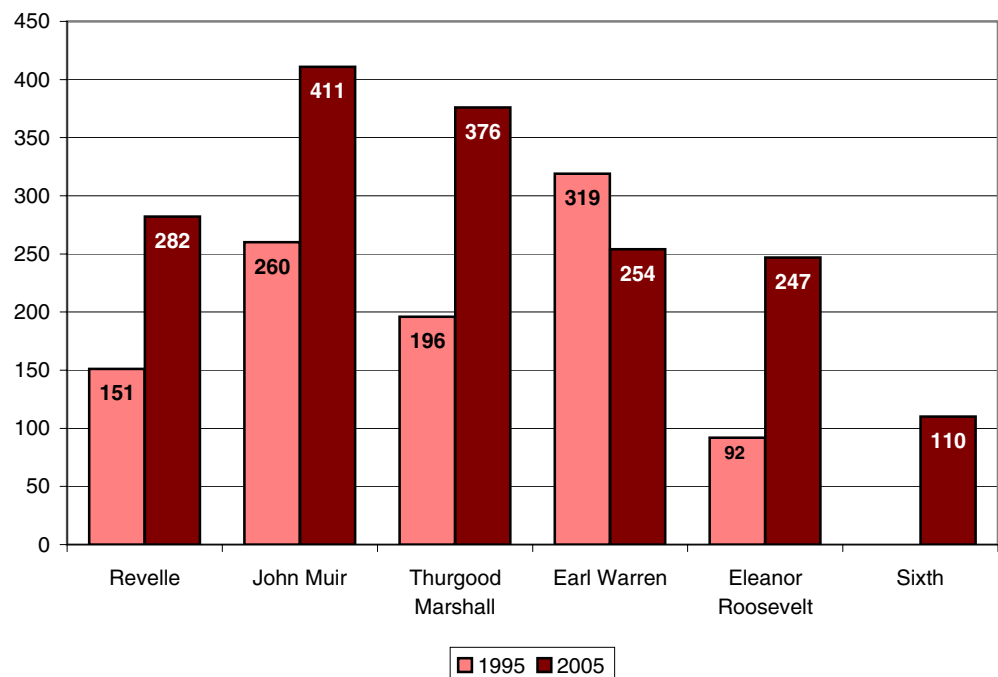


Table 37.

New Transfers by 1st Generation College Status Fall Quarter

College Status	1995	2000	2001	2002	2003	2004	2005	10 Year Δ
• First Generation	353 35%	366 33%	388 31%	394 26%	448 31%	420 32%	542 32%	+54%
• Not First Generation	665 65%	745 67%	862 69%	1,104 74%	1,007 69%	905 68%	1,138 68%	+71%
Total	1,018	1,111	1,250	1,498	1,455	1,325	1,680	+65%

The majority (68%) of new transfer students have at least one parent who has graduated from a two-year junior college or four-year college/university.

Table 38.

New Transfers by Income Group Fall Quarter

Income	1995*	2000	2001	2002	2003	2004	2005	10 Year Δ
• High (≥\$98,401)	123 12%	183 16%	249 20%	270 18%	248 17%	255 19%	304 18%	+147%
• Medium High (\$65,601 - \$98,400)	118 12%	139 13%	154 12%	212 14%	170 12%	143 11%	200 12%	+69%
• Medium Low (\$32,801 - \$65,600)	152 15%	216 19%	245 20%	294 20%	289 20%	225 17%	255 15%	+68%
• Low (≤\$32,800)	150 15%	212 19%	233 19%	259 17%	289 20%	272 21%	245 15%	+63%
• Missing	475 47%	361 32%	369 30%	463 31%	459 32%	430 32%	676 40%	+42%
Total	1,018	1,111	1,250	1,498	1,455	1,325	1,680	+65%

* 1995 Income Categories:
 High = Income ≥ \$87,001
 Medium High = \$58,001-\$87,000
 Medium Low = \$29,001-\$58,000
 Low = Income ≤ \$29,000

Table 39.

New Transfers Freshmen by Athletic Status Fall Quarter

College Status	1995	2000	2001	2002	2003	2004	2005	10 Year Δ
• Athlete	NA NA	NA NA	NA NA	60 4%	40 3%	37 3%	35 98%	NA
• Non-Athlete	NA NA	NA NA	NA NA	1,438 99%	1,415 107%	1,288 97%	1,645 2%	NA
Total	1,018	1,111	1,250	1,498	1,455	1,325	1,680	+65%

Table 40.

Major* Feeder Transfer Institutions **Fall Quarter**

School	City	Enrollment N Fall 2005	% of Total Enrollment
San Diego Mesa College	San Diego	173	10.3%
De Anza College	Cupertino	130	7.7%
Grossmont Community College	El Cajon	88	5.2%
Palomar College	San Marcos	81	4.8%
Santa Monica College	Santa Monica	80	4.8%
Pasadena City College	Pasadena	60	3.6%
Diablo Valley College	Pleasant Hills	54	3.2%
San Diego City College	San Diego	54	3.2%
Orange Coast College	Costa Mesa	49	2.9%
Foothill College	Los Altos Hills	46	2.7%
Southwestern College	Chula Vista	44	2.6%
Mira Costa College	Oceanside	43	2.6%
Saddleback Community College South	Mission Viejo	37	2.2%
UC Riverside	Riverside	34	2.0%
Mount San Antonio College	Walnut	33	2.0%
Moorpark College	Moorpark	32	1.9%
San Diego-Miramar College	San Diego	30	1.8%
College of San Mateo	San Mateo	27	1.6%
Cuyamaca College	El Cajon	26	1.5%
El Camino College	Torrance	26	1.5%
Glendale Community College	Glendale	25	1.5%
Los Angeles Pierce College	Woodland Hills	21	1.3%
Santa Barbara City College	Santa Barbara	21	1.3%
Irvine Valley College	Irvine	20	1.2%
City College of San Francisco	San Francisco	19	1.1%
UC Santa Cruz	Santa Cruz	19	1.1%
Fullerton College	Fullerton	16	1.0%
Ohlone College	Fremont	16	1.0%
Golden West College	Huntington Beach	15	0.9%
Mount San Jacinto College	Mt. San Jacinto	14	0.8%
American River College	Sacramento	12	0.7%
Cerritos College	Cerritos	11	0.7%
College of the Canyons	Santa Clarita	11	0.7%
Riverside Community College	Riverside	11	0.7%
Santa Rosa Junior College	Santa Rosa	11	0.7%
Fresno City College	Fresno	10	0.6%
Sacramento City College	Sacramento	10	0.6%
UC Davis	Davis	10	0.6%
UC Santa Barbara	Santa Barbara	10	0.6%
Subtotal (Number of Transfer Institutions = 39)		1,429	85.1%
Other Institutions (Number of Transfer Institutions = 78)		251	14.9%
Total (Number of Transfer Institutions = 117)		1,680	100.0%

* Ten or more matriculants from named transfer institution.

**San Diego
Mesa College
tops the list of
major feeder
transfer
institutions.
Over ten
percent of the
2005 transfer
cohort
(n=173)
transferred to
UCSD from San
Diego Mesa
College.**



**New
Transfer
Student
Academic
Preparation**

■ Academic Preparation: New Transfer Students

Table 41.

New Transfer Cohort by Transfer GPA Averages							Fall Quarter
Transfer	1995	2000	2001	2002	2003	2004	2005
• Transfer GPA	3.29	3.29	3.30	3.32	3.34	3.40	3.32

Table 42.

New Transfer Cohort by Academic Indicator Ranges			Fall Quarter
Transfer GPA Range	Percentage in Range		
	1995	2005	
• 3.90 - High	5%	6%] 53%
• 3.60 - 3.89	18%	18%	
• 3.30 - 3.59	26%	29%	
• 3.00 - 3.29	28%	30%	
• 2.70 - 2.99	19%	14%	
• Low - 2.69	4%	3%	
Total	100%	100%	

The mean transfer GPA for the 2005 new transfer cohort was 3.32, showing a slight decrease from 2004. Approximately, 24% of the new transfer cohort had a GPA of 3.60 and higher.



**Degrees
Conferred**

■ Degrees Conferred

Table 43.

Degrees Conferred: All Degree Types							Fall Quarter
All Degree Types	1994/1995	2000/2001	2001/2002	2002/2003	2003/2004	2004/2005	10 Year Δ
• Bachelors	3,248 78%	3,713 79%	3,922 80%	4,248 79%	4,136 75%	5,043 78%	+55%
• Masters	392 9%	423 9%	495 10%	573 11%	785 14%	797 12%	+103%
• Candidate in Philosophy	137 3%	147 3%	117 2%	170 3%	161 3%	170 3%	+24%
• Doctor of Philosophy	274 7%	285 6%	278 6%	279 5%	327 6%	303 5%	+11%
• Doctor of Medicine	106 3%	136 3%	61 1%	128 2%	100 2%	117 2%	+10%
Total	4,157	4,704	4,873	5,398	5,509	6,430	+55%

Setting a new record, UCSD awarded more than sixty-four hundred undergraduate, graduate and professional degrees in 2004/2005.

Figure 19.

Degrees Conferred Undergraduate and Graduate Degree Trends

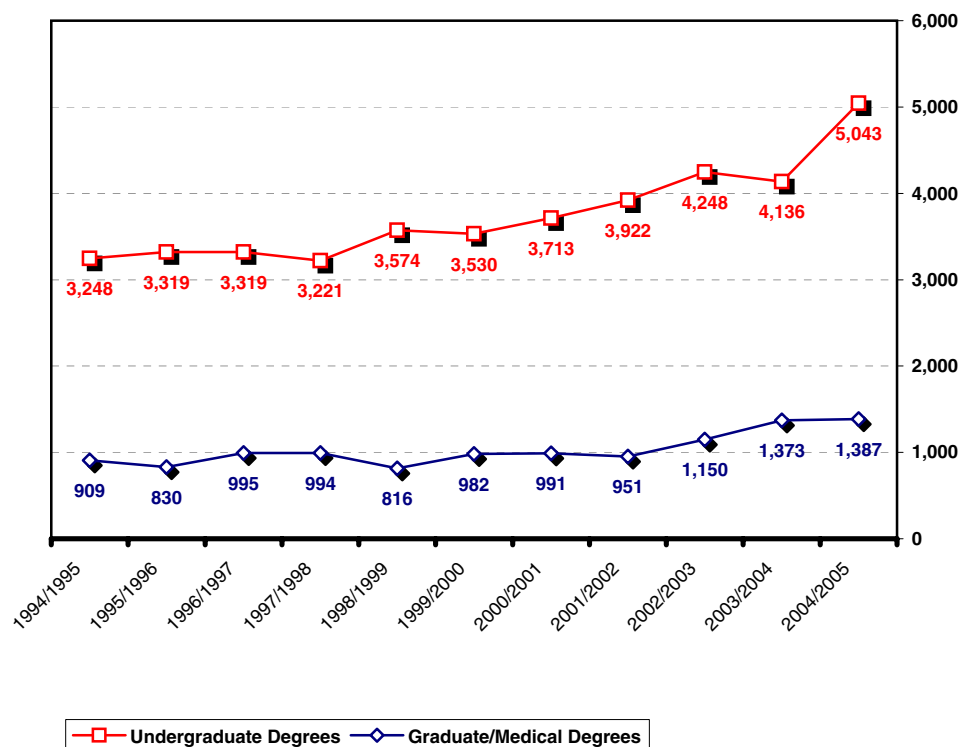


Table 44.

Undergraduate Degrees by Gender Fall Quarter

Gender	1994/1995	2000/2001	2001/2002	2002/2003	2003/2004	2004/2005	10 Year Δ
• Female	1,665 51%	2,022 54%	2,113 54%	2,260 53%	2,272 55%	2,658 53%	+60%
• Male	1,583 49%	1,691 46%	1,809 46%	1,988 47%	1,864 45%	2,385 47%	+51%
Total UG Degrees	3,248	3,713	3,922	4,248	4,136	5,043	+55%

Of the 5,043 undergraduate degrees awarded in 2004/2005, the majority (53%) were awarded to women.

Figure 20.

Undergraduate Degrees by Gender Fall Quarter

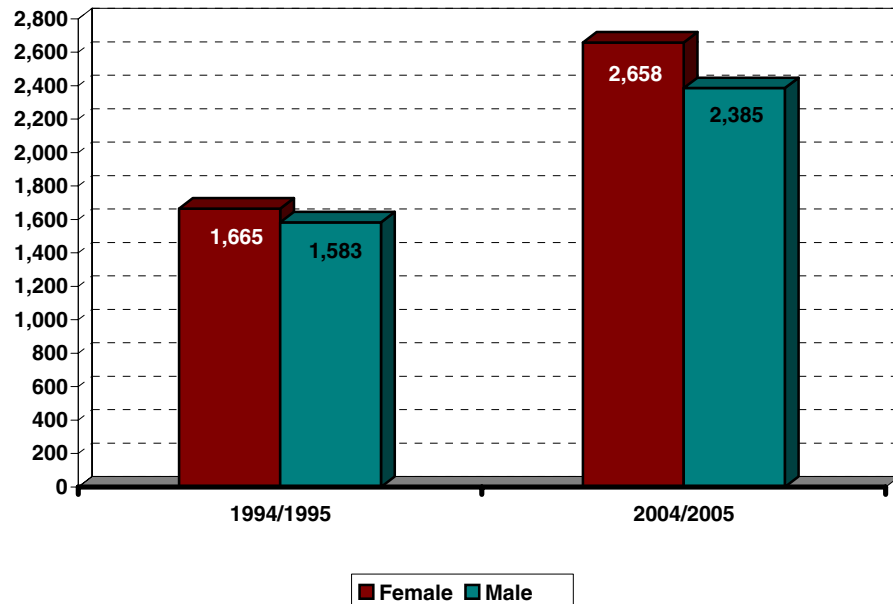


Table 45.

Undergraduate Degrees by Ethnicity Fall Quarter

Ethnicity	1994/1995	2000/2001	2001/2002	2002/2003	2003/2004	2004/2005	10 Year Δ
• African-American	70 2%	59 2%	58 1%	64 2%	50 1%	59 1%	-16%
• Asian	568 17%	1,029 28%	1,039 26%	1,263 30%	1,276 31%	1,690 34%	+198%
• Mexican-American	230 7%	293 8%	284 7%	316 7%	304 7%	349 7%	+52%
• Filipino	133 4%	193 5%	191 5%	204 5%	196 5%	249 5%	+87%
• Latino	89 3%	95 3%	90 2%	91 2%	85 2%	107 2%	+20%
• Native-American	33 1%	34 1%	25 1%	29 1%	15 0%	31 1%	-6%
• Caucasian	1,817 56%	1,550 42%	1,667 43%	1,692 40%	1,669 40%	1,878 37%	+3%
• Other/Undeclared	308 9%	460 12%	568 14%	589 14%	541 13%	680 13%	+121%
Total UG Degrees	3,248	3,713	3,922	4,248	4,136	5,043	+55%

Fifty percent of the UCSD bachelor's degrees were awarded to students of color.

Figure 21.

Undergraduate Degrees by Ethnicity Fall Quarter

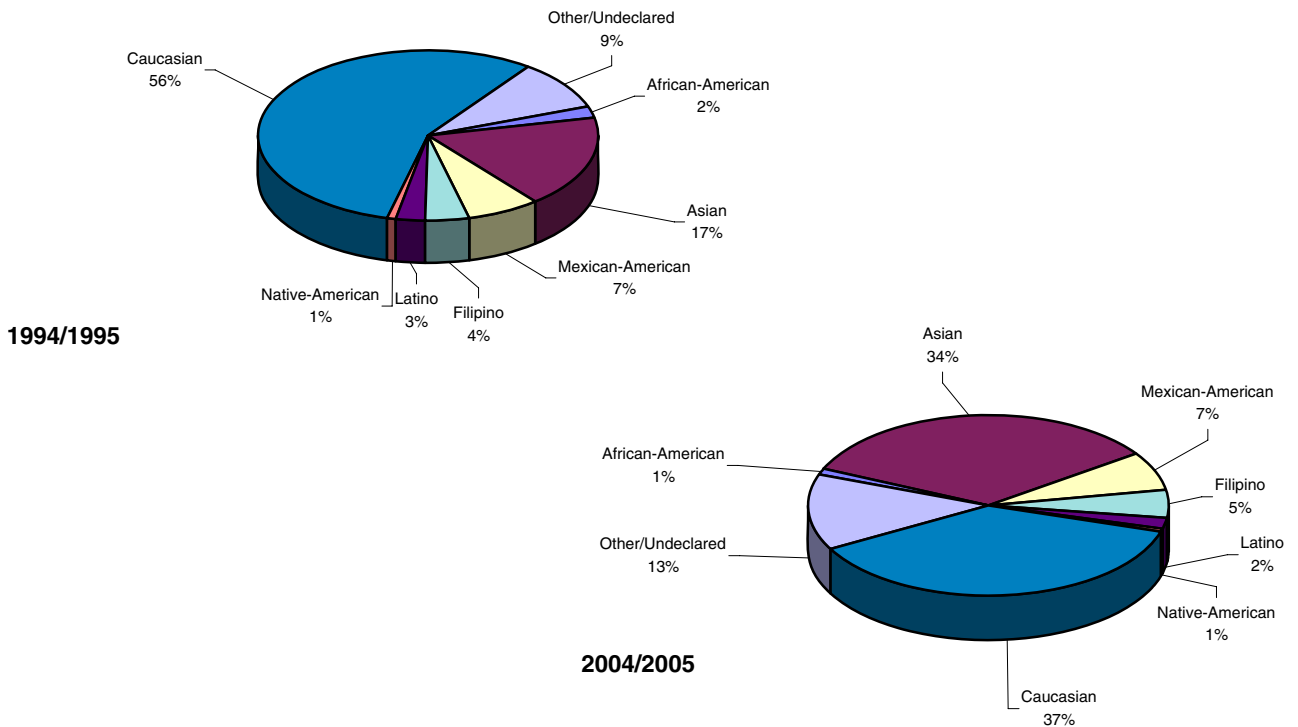


Table 46.

Undergraduate Degrees by Major Field of Study Fall Quarter

Major Field of Study	1994/1995	2000/2001	2001/2002	2002/2003	2003/2004	2004/2005	10 Year Δ
• Arts	145 4%	214 6%	236 6%	300 7%	281 7%	296 6%	+104%
• Humanities	346 11%	273 7%	244 6%	226 5%	253 6%	259 5%	-25%
• Engineering	418 13%	540 15%	563 14%	674 16%	654 16%	998 20%	+139%
• Science/Math	902 28%	1,029 28%	957 24%	994 23%	920 22%	1,079 21%	+20%
• Social Science	1,429 44%	1,649 44%	1,916 49%	2,051 48%	2,022 49%	2,406 48%	+68%
• Double/Special	8 0%	8 0%	6 0%	3 0%	6 0%	5 0%	-38%
Total UG Degrees	3,248	3,713	3,922	4,248	4,136	5,043	+55%

Almost one-half (48%) of all bachelor's degrees were awarded to Social Science majors.

Table 47.

Undergraduate Degrees by College Fall Quarter

College	1994/1995	2000/2001	2001/2002	2002/2003	2003/2004	2004/2005	10 Year Δ
• Revelle	629 19%	650 18%	725 18%	793 19%	715 17%	879 17%	+40%
• John Muir	809 25%	847 23%	925 24%	937 22%	916 22%	1,008 20%	+25%
• Thurgood Marshall	685 21%	804 22%	792 20%	940 22%	932 23%	1,105 22%	+61%
• Earl Warren	770 24%	968 26%	979 25%	1,067 25%	1,009 24%	1,363 27%	+77%
• Eleanor Roosevelt*	355 11%	444 12%	501 13%	511 12%	564 14%	681 14%	+92%
• Sixth**	NA NA	NA NA	NA NA	NA NA	NA NA	7 0%	NA
Total UG Degrees	3,248	3,713	3,922	4,248	4,136	5,043	+55%

* Eleanor Roosevelt College enrolled its first class of undergraduates in 1988.

** Sixth College enrolled its first class of undergraduates in 2002.

Table 48.

Undergraduate Degrees by 1st Generation College Status Fall Quarter

College Status	1994/1995	2000/2001	2001/2002	2002/2003	2003/2004	2004/2005	10 Year Δ
• First Generation	NA	859	870	998	982	1,189	NA
	NA	23%	22%	23%	24%	24%	
• Not First Generation	NA	2,854	3,052	3,250	3,154	3,854	NA
	NA	77%	78%	77%	76%	76%	
Total UG Degrees	3,248	3,713	3,922	4,248	4,136	5,043	+55%

Table 49.

Undergraduate Degrees by Income Group Fall Quarter

Income	1994/1995	2000/2001	2001/2002	2002/2003	2003/2004	2004/2005	10 Year Δ
• High (\geq \$98,401)	NA	758	828	972	905	1,190	NA
	NA	20%	21%	23%	22%	24%	
• Medium High (\$65,601 - \$98,400)	NA	614	618	612	618	693	NA
	NA	17%	16%	14%	15%	14%	
• Medium Low (\$32,801 - \$65,600)	NA	850	872	851	833	1,035	NA
	NA	23%	22%	20%	20%	21%	
• Low (\leq \$32,800)	NA	760	735	837	742	879	NA
	NA	20%	19%	20%	18%	17%	
• Missing	NA	731	869	976	1,038	1,246	NA
	NA	20%	22%	23%	25%	25%	
Total UG Degrees	3,248	3,713	3,922	4,248	4,136	5,043	+55%

Table 50.

Time-to-Degree*/Academic Performance
Entered UCSD from High School Fall Quarter

Undergraduate Degrees	1994/1995	2000/2001	2001/2002	2002/2003	2003/2004	2004/2005
• Time-to-Degree						
Average Elapsed Time in Years	4.5 yrs.	4.4 yrs.	4.4 yrs.	4.5 yrs.	4.4 yrs.	4.3 yrs.
Average Elapsed Time in Quarters	13.4 qtrs.	13.2 qtrs.	13.2 qtrs.	13.5 qtrs.	13.3 qtrs.	13.0 qtrs.
• GPA at Graduation						
GPA \geq 3.5 (B+ or greater)	21.2%	22.4%	20.2%	22.7%	25.4%	25.8%
3.00 \leq GPA < 3.5 (B to B+)	44.4%	44.3%	44.8%	43.4%	42.8%	43.6%
2.50 \leq GPA < 3.00 (C+ to B)	27.8%	26.4%	27.6%	26.6%	25.9%	25.0%
2.0 \leq GPA < 2.50 (C to C+)	6.6%	6.9%	7.3%	7.2%	5.9%	5.7%

* Time-to-degree is reported in elapsed quarters from first enrollment date to graduation. Only the records of students who enter UCSD in the Fall Quarter are included in time-to-degree calculations. An academic year is defined as three quarters; twelve quarters equal four years. Summer degrees are combined with Fall degrees, and combined, represent one quarter.

The average time-to-degree for undergraduate students entering from high school is approximately 13 quarters or 4.3 years. The average GPA for the 2004/2005 graduating class is 3.19.

Figure 22.

Grade Distribution: Degree Recipients Fall Quarter

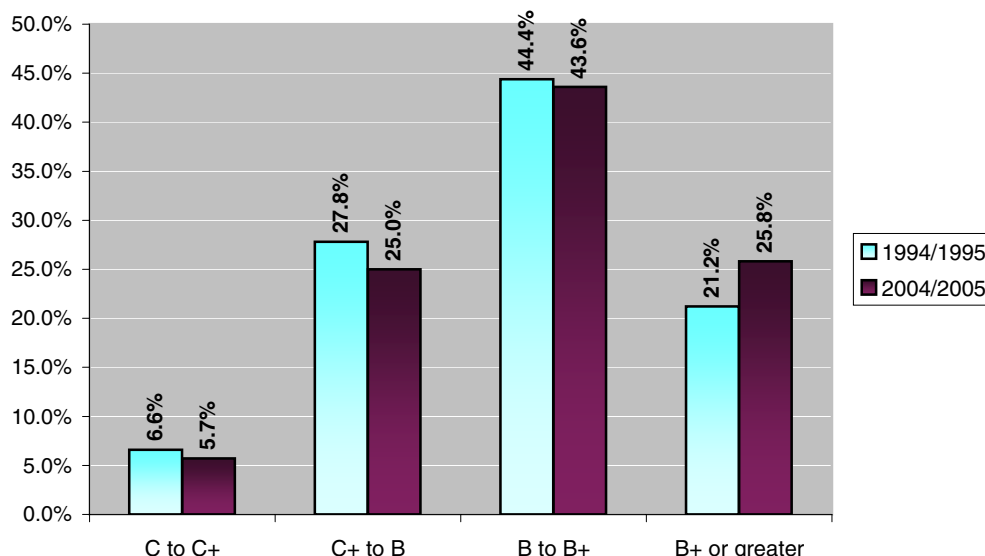


Table 51.

Time-to-Degree*/Academic Performance
Entered UCSD from a Two-Year Community College Fall Quarter

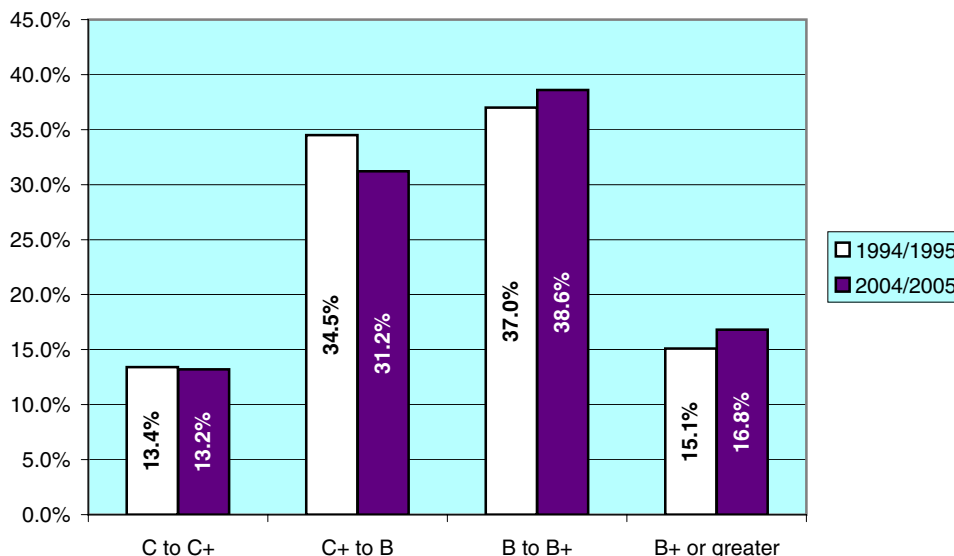
Undergraduate Degrees	1994/1995	2000/2001	2001/2002	2002/2003	2003/2004	2004/2005
• Time-to-Degree						
Average Elapsed Time in Years	3.2 yrs.	2.9 yrs.	2.8 yrs.	2.7 yrs.	2.7 yrs.	2.7 yrs.
Average Elapsed Time in Quarters	9.5 qtrs.	8.7 qtrs.	8.4 qtrs.	8.2 qtrs.	8.2 qtrs.	8.0 qtrs.
• GPA at Graduation	3.02	3.02	3.03	3.04	3.06	3.04
GPA ≥ 3.5 (B+ or greater)	15.1%	16.3%	14.7%	17.1%	19.6%	16.8%
3.00 ≤ GPA < 3.5 (B to B+)	37.0%	36.3%	39.7%	36.5%	36.6%	38.6%
2.50 ≤ GPA < 3.00 (C+ to B)	34.5%	33.3%	32.2%	34.5%	30.6%	31.2%
2.0 ≤ GPA < 2.50 (C to C+)	13.4%	13.9%	13.4%	12.0%	13.1%	13.2%

* Time-to-degree is reported in elapsed quarters from first enrollment date to graduation. Only the records of students who enter UCSD in the Fall Quarter are included in time-to-degree calculations. An academic year is defined as three quarters; twelve quarters equal four years. Summer degrees are combined with Fall degrees, and combined, represent one quarter.

Community College transfer students complete their degree requirements at UCSD in under nine quarters or three years. The average GPA for the 2004/2005 graduating class for courses taken at UCSD was 3.04.

Figure 23.

Grade Distribution: Degree Recipients Fall Quarter





**Appendix:
Undergraduate
Major Fields
of Study /
Academic
Departments**

■ Undergraduate Major Fields of Study/Academic Departments

ARTS

Music Department

- MU01 Pre-Interdisciplinary Computing
- MU25 Music
- MU26 Music Humanities
- MU27 Interdisciplinary Computing and the Arts

Theatre & Dance Department

- TH26 Theatre
- TH27 Dance

Visual Arts Department

- VA01 Pre-Interdisciplinary Computing and the Arts
- VA02 Pre-Visual Arts (Media)
- VA26 Visual Arts (Art History/Criticism)
- VA27 Visual Arts (Media)
- VA28 Visual Arts (Studio)
- VA29 Interdisciplinary Computing and the Arts

HUMANITIES

Classical Studies

- CL25 Classical Studies

History Department

- HI25 History

Literature Department

- LT01 Pre-Literature/Writing
- LT29 French Literature
- LT31 German Literature
- LT32 Russian Literature
- LT33 Spanish Literature
- LT34 Literature/Writing
- LT35 Italian Literature
- LT36 Literatures in English
- LT37 Literature/Composite Major
- LT38 Literatures of the World

Philosophy Department

- PL25 Philosophy

SCHOOL OF ENGINEERING

Bioengineering Department

- BE02 Pre-Bioengineering: Pre-Medical
- BE04 Pre-Bioengineering: Bioinformatics
- BE25 Bioengineering
- BE26 Bioengineering: Pre-Medical
- BE27 Bioengineering: Biotechnology
- BE28 Bioengineering: Bioinformatics

Chemical Engineering

- CE25 Chemical Engineering

Computer Science and Engineering Department

- CS03 Pre-Computer Science with Specialization in Bioinformatics
- CS25 Computer Engineering (see also Electrical and Computer Engineering EC26)
- CS26 Computer Science
- CS27 Computer Science with Specialization in Bioinformatics

Electrical and Computer Engineering Department

- EC03 Pre-Electrical Engineering
- EC04 Pre-Engineering Physics
- EC26 Computer Engineering (see also Computer Science and Engineering CS25)
- EC27 Electrical Engineering
- EC28 Engineering Physics

Mechanical and Aerospace Engineering Department

- MC25 Aerospace Engineering
- MC27 Mechanical Engineering
- MC28 Engineering Science
- MC29 Environmental Engineering

Structural Engineering

- SE26 Engineering Sciences
- SE27 Structural Engineering

SCIENCE AND MATH

SOCIAL SCIENCE

Biology Department

- BI07 Pre-Biology with Specialization in Bioinformatics
- BI28 Animal Physiology and Neuroscience
- BI29 Biochemistry and Cell Biology
(see also Chemistry CH31)
- BI30 Ecology, Behavior and Evolution
- BI31 General Biology
- BI32 Microbiology
- BI33 Molecular Biology
- BI34 Biology with Specialization in Bioinformatics
- BI35 Human Biology
- BI36 Physiology & Neuroscience

Chemistry and Biochemistry Department

- CH01 Pre-Bioinformatics
- CH25 Chemistry
- CH28 Chemistry with Specialization in Earth Sciences
- CH31 Biochemistry/Chemistry (see also Biology BI29)
- CH32 Chemical Physics
- CH33 Chemical Education
- CH34 Environmental Chemistry
- CH35 Pharmacological Chemistry
- CH36 Molecular Synthesis
- CH37 Bioinformatics

Earth Sciences Program

- EA25 Earth Sciences
- EA26 Earth Sciences - Chemistry
- EA27 Earth Sciences - Physics

Environmental Systems

- ES25 Environmental Systems (Earth Sciences)
- ES26 Environmental Systems (Ecology, Behavior, & Evolution)
- ES27 Environmental Systems (Environmental Chemistry)
- ES28 Environmental Systems (Environmental Policy)

Mathematics Department

- MA01 Pre-Mathematics - Computer Science
- MA27 Mathematics (Applied)
- MA29 Mathematics
- MA30 Mathematics-Computer Science
- MA31 Mathematics/Applied Science
- MA32 Mathematics/Secondary Education
- MA33 Joint Major in Mathematics & Economics
- MA34 Mathematics-Scientific Computation

Physics Department

- PY26 Physics-Biophysics
- PY28 Physics with Specialization in Earth Sciences
- PY29 Physics
- PY30 General Physics
- PY31 General Physics, Secondary Education
- PY32 Physics with Specialization in Materials Physics
- PY33 Physics with Specialization in Computational Physics
- PY34 Physics with Specialization in Astrophysics

Anthropology Department

- AN25 Anthropology
- AN26 Anthropology (Concentration in Biological Anthropology)
- AN27 Anthropology (Concentration in Archaeology)

Chinese Studies

- CN25 Chinese Studies

Cognitive Science Department

- CG25 Cognitive Science
- CG27 Cognitive Science with Specialization in Computation
- CG28 Cognitive Science with Specialization in Human Cognition
- CG29 Cognitive Science with Specialization in Neuroscience
- CG30 Cognitive Science with Specialization in Hum. Comp. Inter.
- CG31 Cognitive Science with Clinical Aspects in Cognition

Communication Department

- CM26 Communication

Critical Gender Studies

- CR25 Critical Gender Studies

Economics Department

- EN25 Economics
- EN26 Management Science
- EN28 Joint Major in Mathematics & Economics

Ethnic Studies Department

- ET25 Ethnic Studies

German Studies

- GS25 German Studies

Human Development Program

- HD01 Pre-Human Development
- HD25 Human Development

International Studies

- IS25 International Studies - Anthropology
- IS26 International Studies - Economics
- IS27 International Studies - History
- IS28 International Studies - Linguistics
- IS29 International Studies - Literature
- IS30 International Studies - Political Science
- IS31 International Studies - Sociology

Italian Studies

- IT25 Italian Studies

Japanese Studies

- JA25 Japanese Studies

SOCIAL SCIENCE - continued

SPECIAL AND UNDECLARED

Judaic Studies

JU25 Judaic Studies

Latin American Studies

LA25 Latin American Studies

Linguistics Department

LN25 Linguistics
 LN29 Linguistics (Specialization in Language and Society)
 LN32 Linguistics (Specialization in Cognition & Language)
 LN33 Language Studies (Specialization in [the language of specialization])

Political Science Department

PS25 Political Science
 PS26 Political Science-American Politics
 PS27 Political Science-Comparative Politics
 PS28 Political Science-International Relations
 PS29 Political Science-Political Theory
 PS30 Political Science-Public Law
 PS31 Political Science-Public Policy

Psychology Department

PC26 Psychology

Program for the Study of Religion

RE26 Study of Religion

Russian and Soviet Studies

RU25 Russian and Soviet Studies

Sociology Department

SO25 Sociology

Third World Studies

TW25 Third World Studies

Urban Studies and Planning Program

US26 Urban Studies and Planning

Interdisciplinary Studies

IN25 John Muir College Special Project Major
 IN26 Revelle College Individual Major
 IN27 Eleanor Roosevelt College Individual Studies
 IN28 Earl Warren College Individual Studies
 IN29 Thurgood Marshall College Individual Studies

Undeclared

UNBS Undeclared - Biological Sciences
 UNHA Undeclared - Humanities/Arts
 UNPS Undeclared - Physical Sciences
 UNSS Undeclared - Social Sciences
 UN27 Undeclared

Limited Status

Special-Employee



The Student Digest is an annual publication of the
Office of Student Research & Information,
Student Affairs, 858-534-2382.

This document is also available on the
World Wide Web at:

studentresearch.ucsd.edu