



University of California,
San Diego

University
Center

STUDENT digest

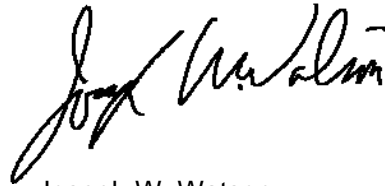
FALL
2006

Enrollment and Academic
Performance Statistics

Office of Student Research
& Information,
Student Affairs
studentresearch.ucsd.edu

■ INTRODUCTION

□ The *Student Digest*, published annually by the Office of Student Research and Information, provides the campus community with a broad overview of trends in undergraduate enrollments, academic performance and graduation statistics. If you have questions or comments regarding this publication, please contact the Office of Student Research and Information/Student Affairs at (858) 534-2382. If you wish to view this report and other statistical reports, they can be found on the World Wide Web at <http://studentresearch.ucsd.edu>.



Joseph W. Watson
Vice Chancellor

STUDENT DIGEST

Enrollment and Academic Performance Statistics

Fall 2006

University of California, San Diego

William B. Armstrong, Ph.D.
Director

Heidi M. Carty, Ph.D.
Principal Research Analyst

Greg Martin
Programmer Analyst

Jason R. Thornton
Research Analyst

Student Research & Information
Student Affairs
University of California, San Diego
La Jolla, CA 92093-0088
<http://studentresearch.ucsd.edu>

■ Table of Contents

Total Campus Enrollment	4
Total Campus Population Summary	5
Total Undergraduate Enrollment	6
By Class Level	7
By Gender	8
By Ethnicity	9
By Major Field of Study	10
By Major Department	11
By College	12
Academic Profile: Undergraduates	13
Total Undergraduate Population Summary	14
By Class Level	15
By Major Field of Study	16
New Students	17
New Student Enrollments	18
First-Time Freshmen	19
Applicants, Admits & Registered	20
By Gender	21
By Ethnicity	22
By Major Field of Study	23
By Major Department at Time of Admission	24
By College & Home Location	25
By 1st Generation College Status & Income Group & Athletic Status	26
Major Feeder High Schools	27
High School Grades and SAT Scores	28
Indicators of Academic Preparation	29
High School GPA by Gender, Ethnicity, Major Field of Study, Home Location, 1st Generation College Status & Income Group	30
SAT I Scores by Gender, Ethnicity, Major Field of Study, Home Location, 1st Generation College Status & Income Group	31
UCSD/UC Systemwide Comparison	32
New Transfer Students	33
Applicants, Admits & Registered	34
By Gender	35
By Ethnicity	36
By Major Field of Study	37
By Transfer Institution & Home Location	38
By Undergraduate College	39
By 1st Generation College Status & Income Group & Athletic Status	40
Major Feeder Transfer Institutions	41
New Transfer Student Academic Preparation	42
Indicators of Academic Preparation	43
Degrees Conferred	44
All Degree Types	45
Bachelor Degrees by Gender	46
Bachelor Degrees by Ethnicity	47
Bachelor Degrees by Major Field of Study & College	48
Bachelor Degrees by First Generation College Status & Income	49
Time-to-Degree/Academic Performance for Students Who Entered UCSD from High School	50
Time-to-Degree/Academic Performance for Students Who Entered UCSD from a Two-Year Community College	51
Appendix: Undergraduate Major Fields of Study/ Academic Departments	52



**Total
Campus
Enrollment**

■ TOTAL CAMPUS ENROLLMENT

Over twenty-six thousand students enrolled at UCSD in fall 2006 - showing an increase of 45% over the past decade. UCSD enrolled 21,369 undergraduate students, and 4,878 graduate and medical students.

Table 1.

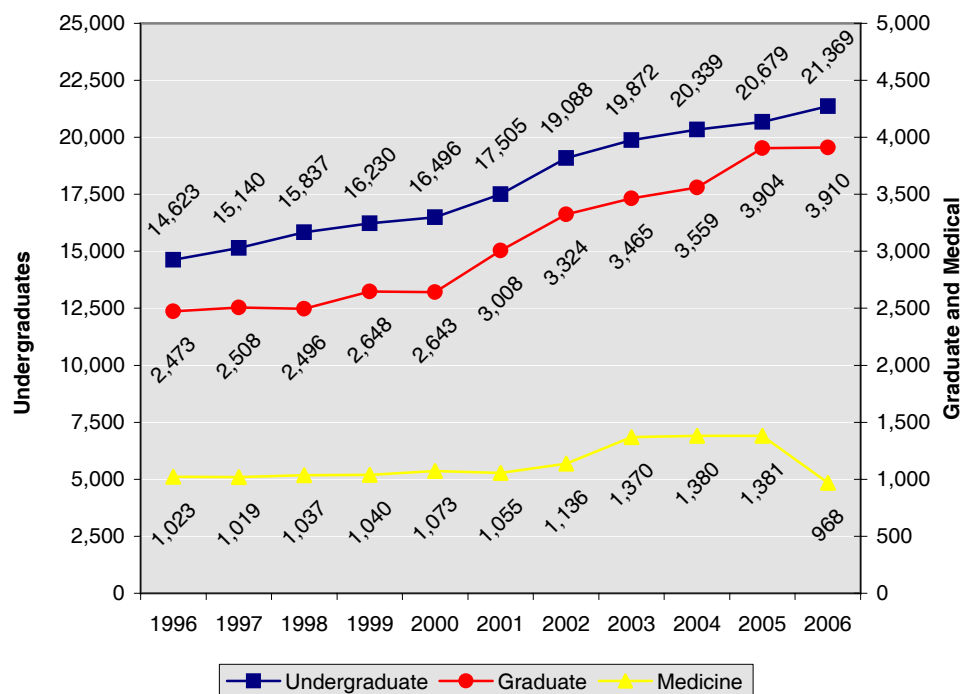
Total Campus Enrollment: The Past Decade Fall Quarter

UCSD Enrollment	1996	2001	2002	2003	2004	2005	2006	10 Year Δ
• Undergraduate	14,623	17,505	19,088	19,872	20,339	20,679	21,369	+46%
• Graduate *	2,473	3,008	3,324	3,465	3,559	3,904	3,910	+58%
• Medicine	1,023	1,055	1,136	1,370	1,380	1,381	968	-5%
Total Campus Enrollment	18,119	21,568	23,548	24,707	25,278	25,964	26,247	+45%

* includes Teacher Education Program.

Figure 1.

Total Campus Enrollment: The Past Decade Fall Quarter





**Total
Undergraduate
Enrollment**

■ Undergraduate Enrollment

Undergraduate enrollments have increased by 46% over the past decade. The majority of undergraduate students (62%) at UCSD are upper division.

Table 2.

Undergraduate Enrollment by Class Level Fall Quarter

The Undergraduates	1996	2001	2002	2003	2004	2005	2006	10 Year Δ
• Lower Division	6,109 42%	7,214 41%	8,059 42%	7,847 39%	7,581 37%	7,551 37%	8,175 38%	+34%
Freshman	3,140 21%	4,185 24%	4,350 23%	3,973 20%	3,954 19%	3,917 19%	4,535 21%	+44%
Sophomore	2,969 20%	3,029 17%	3,709 19%	3,874 19%	3,627 18%	3,634 18%	3,640 17%	+23%
• Upper Division	8,514 58%	10,291 59%	11,029 58%	12,025 61%	12,758 63%	13,128 63%	13,194 62%	+55%
Junior	3,773 26%	4,705 27%	4,920 26%	5,523 28%	5,560 27%	5,733 28%	5,659 26%	+50%
Senior	4,741 32%	5,586 32%	6,109 32%	6,502 33%	7,198 35%	7,395 36%	7,535 35%	+59%
Total UG Enrollment	14,623	17,505	19,088	19,872	20,339	20,679	21,369	+46%

Figure 2.

Total Undergraduate Enrollment Trends by Class Level Fall Quarter

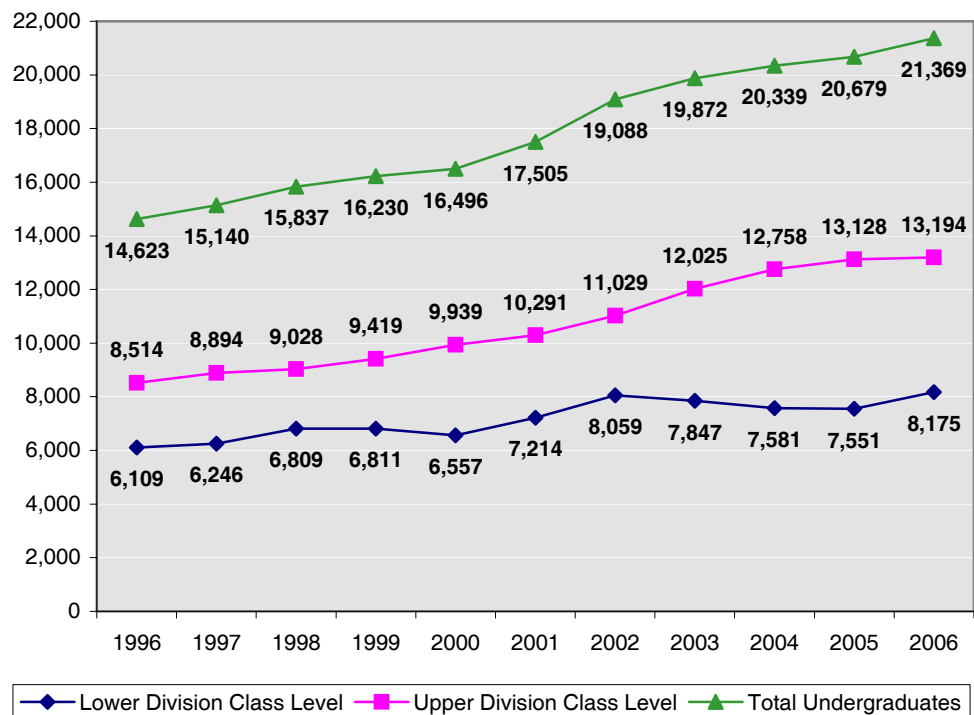


Table 3.

Undergraduates by Gender Fall Quarter

Gender	1996	2001	2002	2003	2004	2005	2006	10 Year Δ
• Female	7,301 50%	9,105 52%	9,913 52%	10,359 52%	10,606 52%	10,835 52%	11,164 52%	+53%
• Male	7,322 50%	8,400 48%	9,175 48%	9,513 48%	9,733 48%	9,844 48%	10,205 48%	+39%
Total UG Enrollment	14,623	17,505	19,088	19,872	20,339	20,679	21,369	+46%

Women
continue to
outnumber
men at UCSD
by
approximately
four percent.

Figure 3.

Undergraduate Enrollment by Gender Fall Quarter

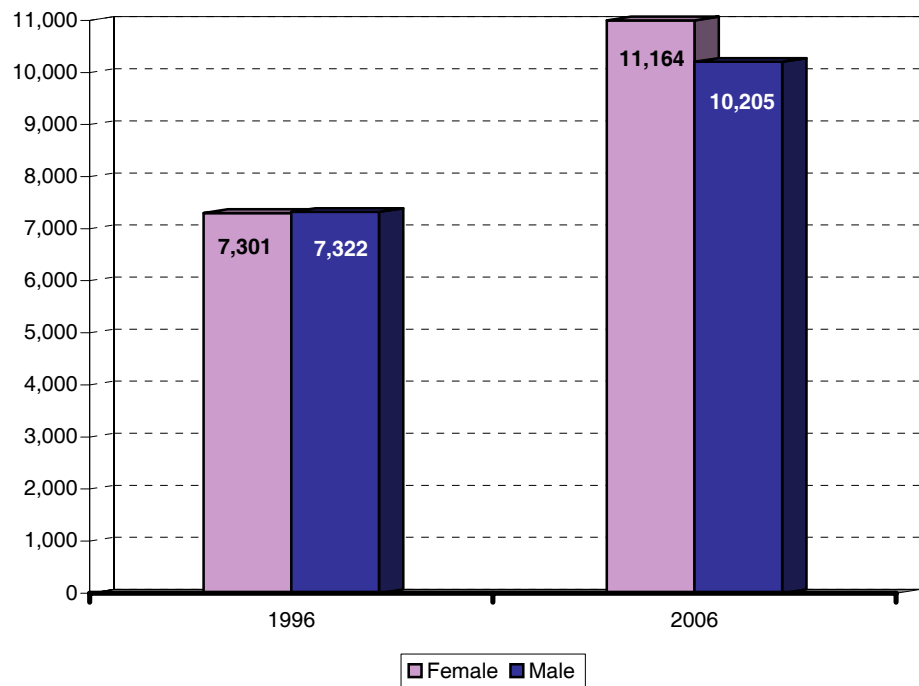


Table 4.

Undergraduates by Ethnicity Fall Quarter

Ethnicity	1996	2001	2002	2003	2004	2005	2006	10 Year Δ
• African-American	299 2%	211 1%	219 1%	244 1%	273 1%	282 1%	276 1%	-8%
• Asian	4,139 28%	5,554 32%	6,426 34%	6,851 34%	7,221 36%	7,580 37%	8,287 39%	+100%
• Mexican-American	1,300 9%	1,322 8%	1,475 8%	1,584 8%	1,655 8%	1,720 8%	1,844 9%	+42%
• Filipino	803 5%	896 5%	956 5%	979 5%	1,017 5%	1,051 5%	1,058 5%	+32%
• Latino	316 2%	375 2%	428 2%	470 2%	481 2%	520 3%	567 3%	+79%
• Native-American	122 1%	81 0%	91 0%	84 0%	85 0%	89 0%	99 0%	-19%
• Caucasian	6,231 43%	6,652 38%	6,981 37%	7,048 35%	6,855 34%	6,625 32%	6,557 31%	+5%
• Other/Undeclared	1,413 10%	2,414 14%	2,512 13%	2,612 13%	2,752 14%	2,812 14%	2,681 13%	+90%
Total UG Enrollment	14,623	17,505	19,088	19,872	20,339	20,679	21,369	+46%

Compared to 1996, there has been an increase in the proportion of Asian, those self-identified as Other/Undeclared, and Latino students. At the same time, there has been a decrease in the proportion of African-American, Native-American and Caucasian students. The proportion of Mexican-American and Filipino students has remained the same.

Figure 4.

Undergraduate Enrollment by Ethnicity Fall Quarter

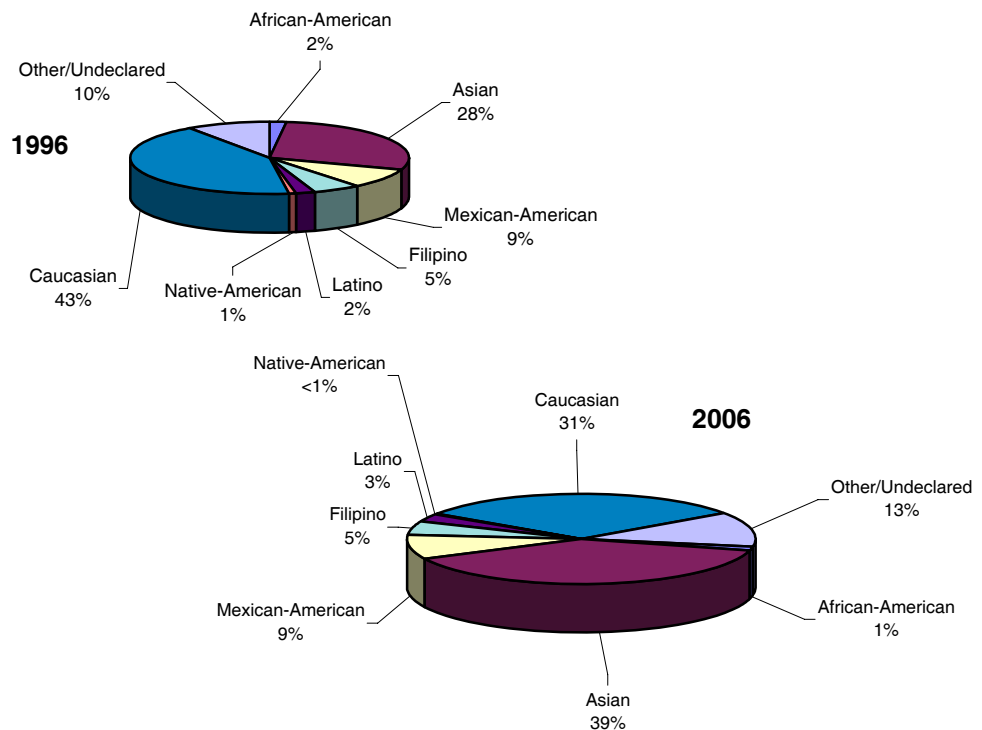


Table 5.

Undergraduates by Major Field of Study Fall Quarter

Major Field of Study	1996	2001	2002	2003	2004	2005	2006	10 Year Δ
• Arts	423 3%	931 5%	1,047 5%	1,070 5%	945 5%	889 4%	826 4%	+95%
• Humanities	899 6%	740 4%	806 4%	875 4%	905 4%	902 4%	936 4%	+4%
• Engineering	2,651 18%	3,855 22%	4,284 22%	4,331 22%	4,273 21%	4,035 20%	3,820 18%	+44%
• Science/Math	998 7%	1,217 7%	1,375 7%	1,438 7%	1,576 8%	1,713 8%	1,935 9%	+94%
• Biology	3,902 27%	3,037 17%	3,030 16%	3,055 15%	3,368 17%	3,809 18%	4,273 20%	+10%
• Social Science	3,983 27%	5,830 33%	6,177 32%	6,515 33%	6,928 34%	7,372 36%	7,610 36%	+91%
• Undec./Special	1,767 12%	1,895 11%	2,369 12%	2,588 13%	2,344 12%	1,959 9%	1,969 9%	+11%
Total UG Enrollment	14,623	17,505	19,088	19,872	20,339	20,679	21,369	+46%

The social sciences continue to be the most popular undergraduate field of study at UCSD.

Figure 5.

Undergraduate Enrollment by Major Field of Study Fall Quarter

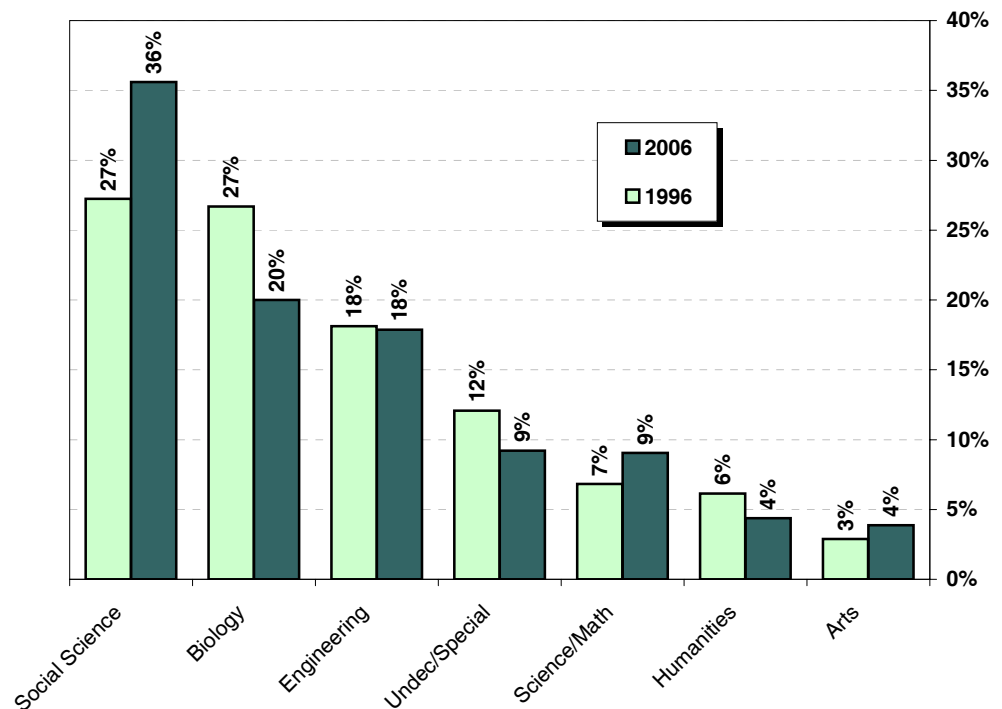


Table 6.

Undergraduates by Major Department **Fall Quarter**
Ten Most Populous Departments

1996			2006		
Major Department	n	%	Major Department	n	%
Biology	3,902	26.7%	Biology	4,273	20.0%
Psychology	954	6.5%	Economics	1,993	9.3%
Economics	787	5.4%	Psychology	1,340	6.3%
Computer Science & Eng. (CSE)	763	5.2%	Political Science	1,226	5.7%
Bioengineering	753	5.1%	Chemistry	1,137	5.3%
Political Science	612	4.2%	Mechanical & Aerospace Eng.	1,068	5.0%
Applied Mechanics & Eng. (AMES)	605	4.1%	Bioengineering	879	4.1%
Chemistry	559	3.8%	International Studies	763	3.6%
Electrical & Computer Eng. (ECE)	530	3.6%	Communications	721	3.4%
Communications	513	3.5%	Computer Science & Eng. (CSE)	682	3.2%
Other Departments	2,880	19.7%	Other Departments	5,325	24.9%
Undeclared Majors	1,765	12.1%	Undeclared Majors	1,962	9.2%
TOTAL	14,623	100.0%	TOTAL	21,369	100.0%

Similar to 1996, the most popular undergraduate major at UCSD in 2006 is Biology. Economics has become the second most popular undergraduate major, followed by Psychology.

Figure 6.

Ten Most Populous Departments **Fall Quarter**

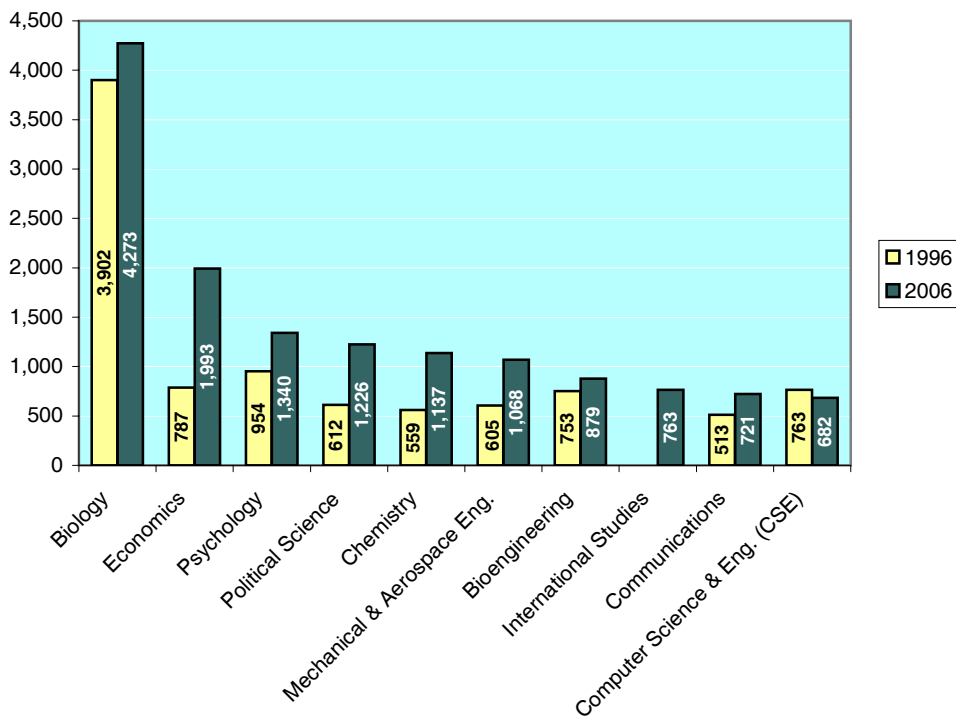


Table 7.

Undergraduates by College Fall Quarter

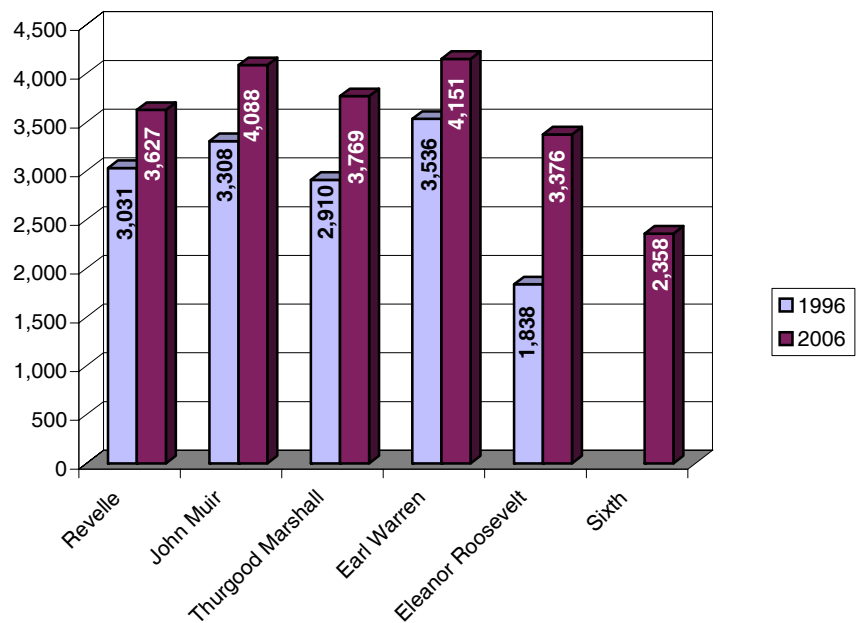
College	1996	2001	2002	2003	2004	2005	2006	10 Year Δ
• Revelle	3,031 21%	3,504 21%	3,765 22%	3,697 19%	3,647 18%	3,690 18%	3,627 17%	+20%
• John Muir	3,308 23%	3,707 22%	3,833 22%	3,866 20%	3,797 19%	3,861 19%	4,088 19%	+24%
• Thurgood Marshall	2,910 20%	3,560 22%	3,794 22%	3,856 20%	3,813 19%	3,736 18%	3,769 18%	+30%
• Earl Warren	3,536 24%	4,046 25%	4,388 25%	4,559 24%	4,565 22%	4,331 21%	4,151 19%	+17%
• Eleanor Roosevelt	1,838 13%	2,688 16%	3,028 17%	3,232 17%	3,370 17%	3,337 16%	3,376 16%	+84%
• Sixth*	NA NA	NA NA	280 1%	662 3%	1,147 6%	1,724 8%	2,358 11%	NA
Total UG Enrollment	14,623	17,505	19,088	19,872	20,339	20,679	21,369	

* Note: Sixth College enrolled its first class of undergraduates in 2002.

While in Fall 2006 Earl Warren enrolls the largest number of students (N=4,151), Earl Warren (19%) and John Muir (19%) enroll the same proportion of students.

Figure 7.

Undergraduate Enrollments by College Fall Quarter





**Academic
Profile:
Undergraduates**

■ Academic Profile: Total Undergraduate Population

Table 8.

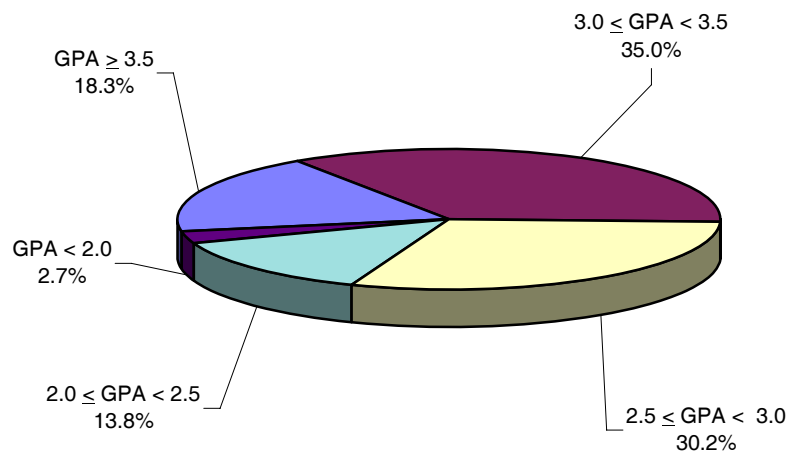
Academic Profile Summary Fall Quarter

Undergraduates	1996	2001	2002	2003	2004	2005	2006
• UCSD GPA	2.98	3.02	3.02	3.02	3.03	3.02	3.01
GPA \geq 3.5	15.9%	18.2%	18.3%	19.0%	19.0%	18.6%	18.3%
3.0 \leq GPA < 3.5	34.0%	35.5%	35.3%	35.4%	36.8%	36.3%	35.0%
2.5 \leq GPA < 3.0	33.0%	30.8%	30.5%	30.0%	29.2%	29.7%	30.2%
2.0 \leq GPA < 2.5	14.2%	13.1%	13.4%	12.9%	12.7%	12.8%	13.8%
GPA < 2.0	2.9%	2.4%	2.4%	2.7%	2.4%	2.6%	2.7%

The mean grade point average (GPA) for all undergraduates at UCSD is 3.01 (B); approximately 18% earn a GPA of 3.50 (B+) or higher.

Figure 8.

Proportion of Student Body within GPA Ranges Fall Quarter



2006

Table 9.

Academic Profile by Class Level **Fall Quarter**

Undergraduates	1996	2001	2002	2003	2004	2005	2006
• Freshman* (N = 2,704)							
Freshman GPA	2.83	2.96	2.94	2.92	2.88	2.90	2.89
GPA ≥ 3.5	17.7%	23.6%	21.4%	22.1%	20.6%	20.0%	19.5%
$3.0 \leq \text{GPA} < 3.5$	28.0%	32.3%	31.9%	31.9%	30.7%	31.7%	32.0%
$2.5 \leq \text{GPA} < 3.0$	26.3%	23.4%	25.4%	23.3%	23.9%	25.2%	23.8%
$2.0 \leq \text{GPA} < 2.5$	17.6%	13.2%	13.9%	13.7%	14.1%	15.0%	16.2%
GPA < 2.0	10.4%	7.4%	7.5%	9.0%	10.6%	8.1%	8.6%
• Sophomore (N = 3,640)							
Sophomore GPA	2.94	3.02	3.01	3.00	2.99	2.98	2.97
GPA ≥ 3.5	13.1%	18.8%	17.0%	17.4%	15.7%	15.7%	15.1%
$3.0 \leq \text{GPA} < 3.5$	33.5%	35.8%	35.8%	36.0%	36.2%	35.3%	36.2%
$2.5 \leq \text{GPA} < 3.0$	34.7%	29.4%	32.0%	29.8%	31.2%	31.9%	30.5%
$2.0 \leq \text{GPA} < 2.5$	15.8%	13.0%	13.3%	14.2%	14.3%	14.2%	15.6%
GPA < 2.0	2.8%	2.9%	2.0%	2.6%	2.7%	2.9%	2.7%
• Junior (N = 5,659)							
Junior GPA	2.98	3.03	3.02	3.04	3.05	3.01	3.00
GPA ≥ 3.5	15.4%	18.4%	18.9%	19.2%	19.8%	17.6%	18.1%
$3.0 \leq \text{GPA} < 3.5$	35.0%	35.9%	36.3%	37.3%	37.7%	36.6%	34.4%
$2.5 \leq \text{GPA} < 3.0$	33.1%	31.2%	29.4%	29.9%	28.5%	30.4%	31.3%
$2.0 \leq \text{GPA} < 2.5$	13.2%	12.5%	12.5%	11.2%	12.0%	12.6%	12.6%
GPA < 2.0	3.2%	2.1%	2.8%	2.4%	2.0%	2.8%	3.6%
• Senior (N = 7,535)							
Senior GPA	3.02	3.03	3.04	3.05	3.07	3.08	3.05
GPA ≥ 3.5	17.8%	18.3%	19.2%	20.5%	20.6%	21.4%	20.3%
$3.0 \leq \text{GPA} < 3.5$	35.0%	36.4%	35.8%	35.5%	37.9%	37.8%	35.9%
$2.5 \leq \text{GPA} < 3.0$	32.4%	31.2%	30.3%	30.0%	28.5%	28.2%	29.3%
$2.0 \leq \text{GPA} < 2.5$	13.0%	12.5%	13.2%	12.0%	11.6%	11.0%	12.9%
GPA < 2.0	1.8%	1.6%	1.5%	2.0%	1.5%	1.5%	1.6%
Undergraduate GPA	2.98	3.02	3.02	3.02	3.03	3.02	3.01

There is a positive relationship between student class level and grade point average; as students advance in standing, they tend to earn higher a grade point average.

* Note: Freshman GPA data reflect grades for Winter quarter of first year enrolled.

Table 10.

Academic Profile by Major Field of Study

Fall Quarter

Undergraduates		2001	2002	2003	2004	2005	2006
• Arts (N = 826)							
Arts GPA	3.11	3.12	3.17	3.17	3.19	3.20	3.22
GPA \geq 3.5	17.9%	20.9%	24.3%	25.2%	24.5%	25.6%	28.0%
3.0 \leq GPA < 3.5	47.0%	44.5%	45.2%	42.0%	45.8%	46.9%	45.0%
2.5 \leq GPA < 3.0	25.9%	24.6%	22.3%	24.4%	23.1%	21.4%	21.4%
2.0 \leq GPA < 2.5	8.1%	9.1%	7.6%	7.2%	6.0%	4.6%	4.3%
GPA < 2.0	1.2%	1.0%	0.6%	1.2%	0.6%	1.5%	1.4%
• Humanities (N = 936)							
Humanities GPA	3.10	3.14	3.13	3.15	3.15	3.12	3.09
GPA \geq 3.5	22.2%	24.9%	23.9%	23.6%	26.0%	24.0%	21.5%
3.0 \leq GPA < 3.5	40.9%	39.9%	41.0%	43.1%	41.5%	40.0%	40.6%
2.5 \leq GPA < 3.0	25.9%	27.0%	24.5%	24.7%	22.9%	24.7%	24.6%
2.0 \leq GPA < 2.5	9.7%	6.6%	8.6%	7.9%	7.6%	10.0%	10.5%
GPA < 2.0	1.3%	1.6%	2.0%	0.7%	2.1%	1.2%	2.8%
• Engineering (N = 3,820)							
Engineering GPA	2.97	2.99	2.97	2.99	3.00	3.00	3.00
GPA \geq 3.5	16.9%	16.9%	16.7%	18.0%	18.2%	18.7%	18.0%
3.0 \leq GPA < 3.5	30.5%	32.1%	31.0%	31.8%	32.3%	32.5%	33.1%
2.5 \leq GPA < 3.0	34.1%	34.5%	34.1%	34.0%	32.8%	31.7%	31.6%
2.0 \leq GPA < 2.5	15.6%	14.5%	16.0%	13.7%	14.5%	14.9%	14.8%
GPA < 2.0	2.8%	2.0%	2.1%	2.5%	2.1%	2.2%	2.5%
• Science/Math (N = 1,935)							
Science/Math GPA	2.98	2.95	2.92	2.93	2.96	2.91	2.94
GPA \geq 3.5	19.8%	19.3%	18.6%	18.5%	17.6%	15.9%	15.9%
3.0 \leq GPA < 3.5	29.7%	27.0%	27.0%	29.9%	33.5%	31.3%	31.9%
2.5 \leq GPA < 3.0	32.5%	32.6%	30.9%	27.6%	27.5%	31.8%	30.1%
2.0 \leq GPA < 2.5	14.5%	17.8%	19.4%	20.5%	18.8%	15.7%	18.8%
GPA < 2.0	3.5%	3.2%	4.1%	3.5%	2.6%	5.3%	3.3%
• Biology (N = 4,273)							
Biology GPA	2.96	3.10	3.10	3.04	3.05	3.06	3.05
GPA \geq 3.5	15.6%	20.2%	20.2%	20.9%	20.5%	20.5%	20.0%
3.0 \leq GPA < 3.5	33.4%	35.2%	36.3%	34.3%	35.6%	35.5%	34.4%
2.5 \leq GPA < 3.0	33.4%	29.9%	30.1%	30.7%	31.1%	30.9%	33.2%
2.0 \leq GPA < 2.5	14.6%	12.2%	11.4%	11.9%	11.1%	11.0%	10.8%
GPA < 2.0	3.0%	2.5%	2.0%	2.1%	1.7%	2.1%	1.6%
• Social Science (N = 7,610)							
Social Science GPA	2.97	3.00	3.02	3.01	3.03	3.02	2.99
GPA \geq 3.5	14.0%	16.4%	17.2%	17.8%	18.0%	17.6%	16.7%
3.0 \leq GPA < 3.5	35.2%	37.4%	37.6%	37.1%	39.0%	38.3%	35.8%
2.5 \leq GPA < 3.0	33.5%	30.5%	29.9%	29.3%	28.6%	28.9%	29.7%
2.0 \leq GPA < 2.5	14.3%	13.3%	12.6%	12.5%	11.8%	12.7%	14.7%
GPA < 2.0	3.0%	2.3%	2.6%	3.2%	2.5%	2.5%	3.1%
Undergraduate GPA	2.98	3.02	3.02	3.02	3.03	3.02	3.01

Grade point averages vary by major field of study; the highest average GPAs are generally associated with arts and humanities majors.



**New
Students**

■ New Students: The Past Decade

Table 11.

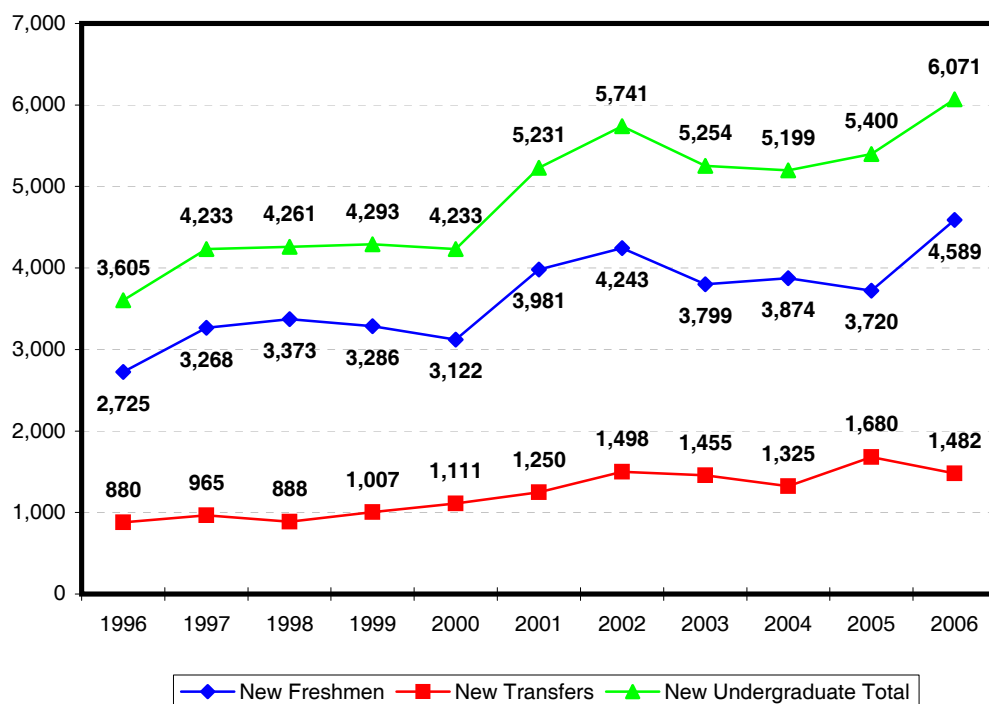
New Student Enrollments Fall Quarter

New Students	1996	2001	2002	2003	2004	2005	2006	10 Year Δ
• First-Time Freshmen	2,725 76%	3,981 76%	4,243 74%	3,799 72%	3,874 75%	3,720 69%	4,589 76%	+68%
• New Transfers	880 24%	1,250 24%	1,498 26%	1,455 28%	1,325 25%	1,680 31%	1,482 24%	+68%
New Student Total	3,605	5,231	5,741	5,254	5,199	5,400	6,071	+68%

New student enrollments have increased from 3,605 in 1996 to 6,071 in 2006, representing an overall increase of 68%. Of the new student enrollment, just over three-quarters (76%) are first-time freshmen, representing the largest cohort of incoming freshmen to date.

Figure 9.

New Student Enrollments Fall Quarter





**First-Time
Freshmen**

■ First-Time Freshmen

Over forty-three thousand high school students applied for admission to UCSD for fall of 2006. Of these students, 49% were admitted to UCSD. A total of 4,585 of the admitted students registered for enrollment, showing a yield of 21%.

Table 12.

Applicants, Admits & Registered Fall Quarter

First-Time Freshmen	1996	2001	2002	2003	2004	2005	2006	10 Year Δ
• Applicants	23,685	38,187	41,354	43,438	41,330	40,518	43,586	+84%
• Admits	11,909	16,493	17,092	17,618	17,269	17,891	21,345	+79%
Admit/App. Rate	50%	43%	41%	41%	42%	44%	49%	
• Registered	2,725	3,981	4,243	3,799	3,874	3,720	4,589	+68%
Reg./Admit Rate	23%	24%	25%	22%	22%	21%	21%	

Figure 10.

Applicants, Admits & Registered Fall Quarter

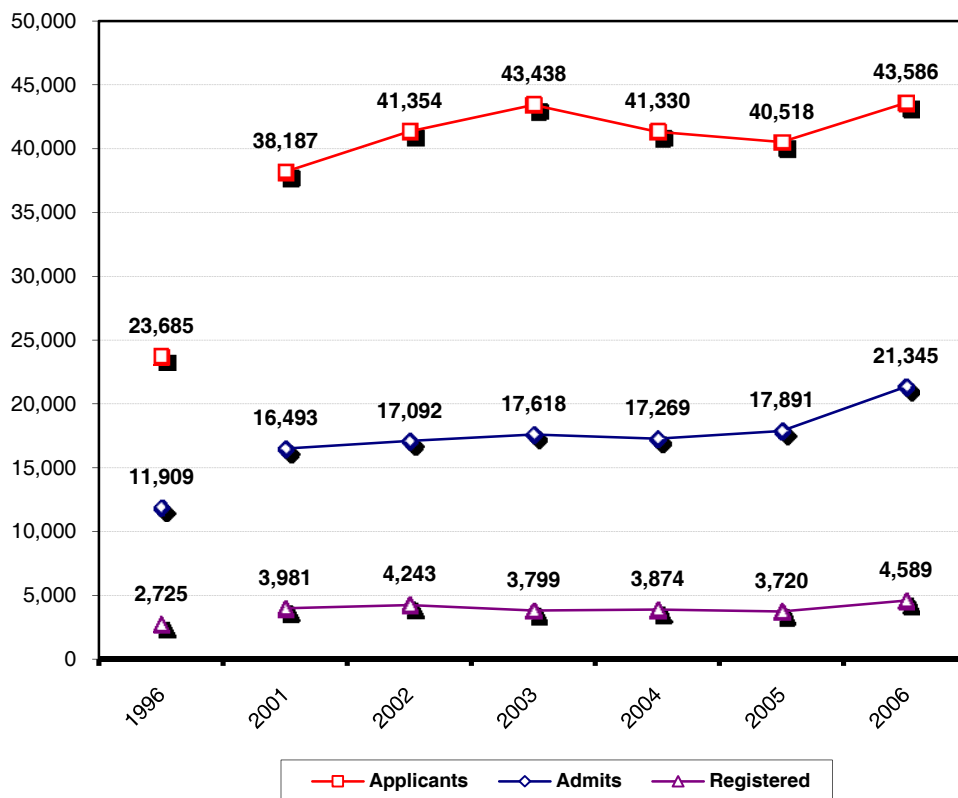


Table 13.

First-Time Freshmen by Gender Fall Quarter

Gender	1996	2001	2002	2003	2004	2005	2006	10 Year Δ
• Female	1,501 55%	2,152 54%	2,340 55%	2,130 56%	2,190 57%	2,113 57%	2,558 56%	+70%
• Male	1,224 45%	1,829 46%	1,903 45%	1,669 44%	1,684 43%	1,607 43%	2,031 44%	+66%
Total	2,725	3,981	4,243	3,799	3,874	3,720	4,589	+68%

At 56%, women continue to represent the majority of first-time freshmen at UCSD.

Figure 11.

First-Time Freshmen by Gender Fall Quarter

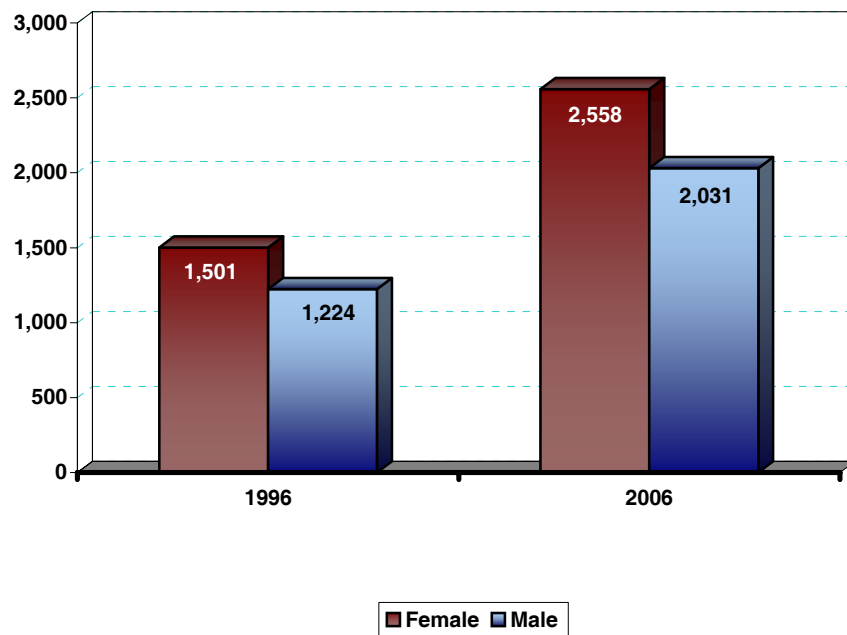


Table 14.

First-Time Freshmen by Ethnicity Fall Quarter

Ethnicity	1996	2001	2002	2003	2004	2005	2006	10 Year Δ
• African-American	61 2%	33 1%	48 1%	47 1%	57 1%	43 1%	44 1%	-28%
• Asian	774 28%	1,452 36%	1,502 35%	1,355 36%	1,519 39%	1,600 43%	2,080 45%	+169%
• Mexican-American	234 9%	254 6%	358 8%	322 8%	355 9%	321 9%	388 8%	+66%
• Filipino	161 6%	202 5%	199 5%	183 5%	216 6%	201 5%	221 5%	+37%
• Latino	42 2%	68 2%	98 2%	97 3%	91 2%	111 3%	122 3%	+190%
• Native-American	29 1%	9 0%	20 0%	14 0%	15 0%	18 0%	22 0%	-24%
• Caucasian	1,116 41%	1,472 37%	1,508 36%	1,315 35%	1,163 30%	1,083 29%	1,283 28%	+15%
• Other/Missing	308 11%	491 12%	510 12%	466 12%	458 12%	343 9%	429 9%	+39%
Total	2,725	3,981	4,243	3,799	3,874	3,720	4,589	+68%

Compared to the 1996 freshman cohort, the proportion of Asian students has increased by almost 20% in fall 2006. At the same time, the proportion of Caucasian students has decreased by 13% and the proportion of African-American, Mexican-American, Filipino and Native-American have all decreased by 1%.

Figure 12.

First-Time Freshmen by Ethnicity Fall Quarter

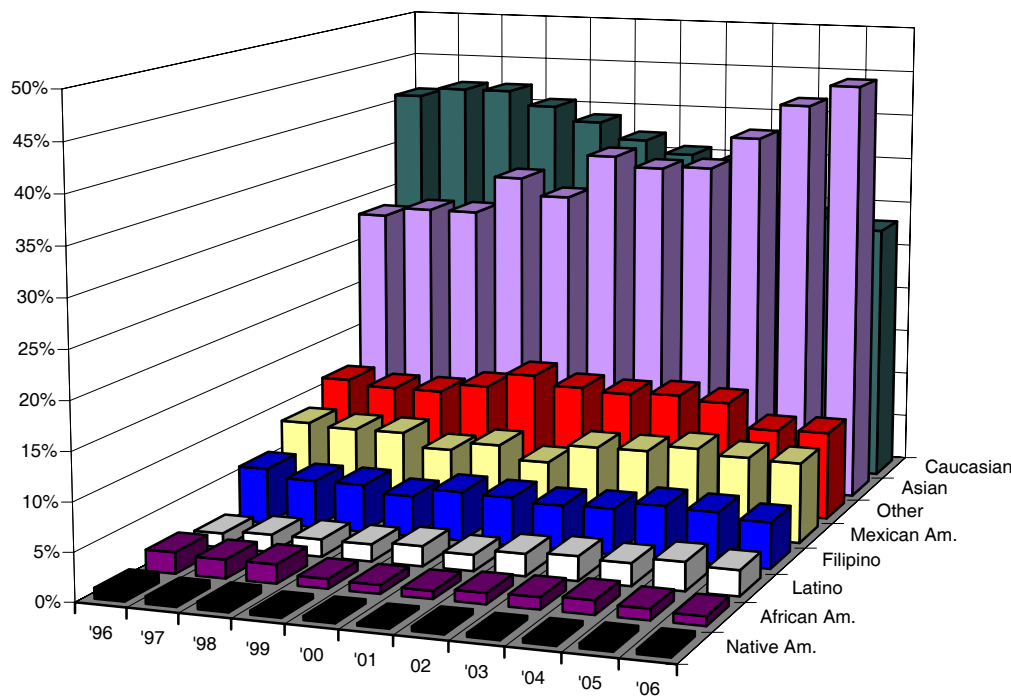


Table 15.

First-Time Freshmen by Major Field of Study Fall Quarter

Major Field of Study	1996	2001	2002	2003	2004	2005	2006	10 Year Δ
• Arts	45 2%	115 3%	143 3%	92 2%	81 2%	82 2%	105 2%	+133%
• Humanities	83 3%	102 3%	112 3%	98 3%	119 3%	84 2%	151 3%	+82%
• Engineering	603 22%	1,035 26%	900 21%	738 19%	778 20%	766 21%	872 19%	+45%
• Science/Math	181 7%	260 7%	310 7%	290 8%	342 9%	370 10%	465 10%	+157%
• Biology	586 22%	587 15%	622 15%	566 15%	634 16%	616 17%	807 18%	+38%
• Social Science	415 15%	697 18%	713 17%	619 16%	741 19%	791 21%	1,024 22%	+147%
• Undeclared/Missing/ Special	812 30%	1,185 30%	1,443 34%	1,396 37%	1,179 30%	1,011 27%	1,165 25%	+43%
Total	2,725	3,981	4,243	3,799	3,874	3,720	4,589	+68%

The most popular declared field of study in 2006 is social sciences, followed by engineering and biology. Approximately, one-quarter (25%) of all new freshmen are considered undeclared upon admission.

Figure 13.

First-Time Freshmen by Major Field of Study Fall Quarter

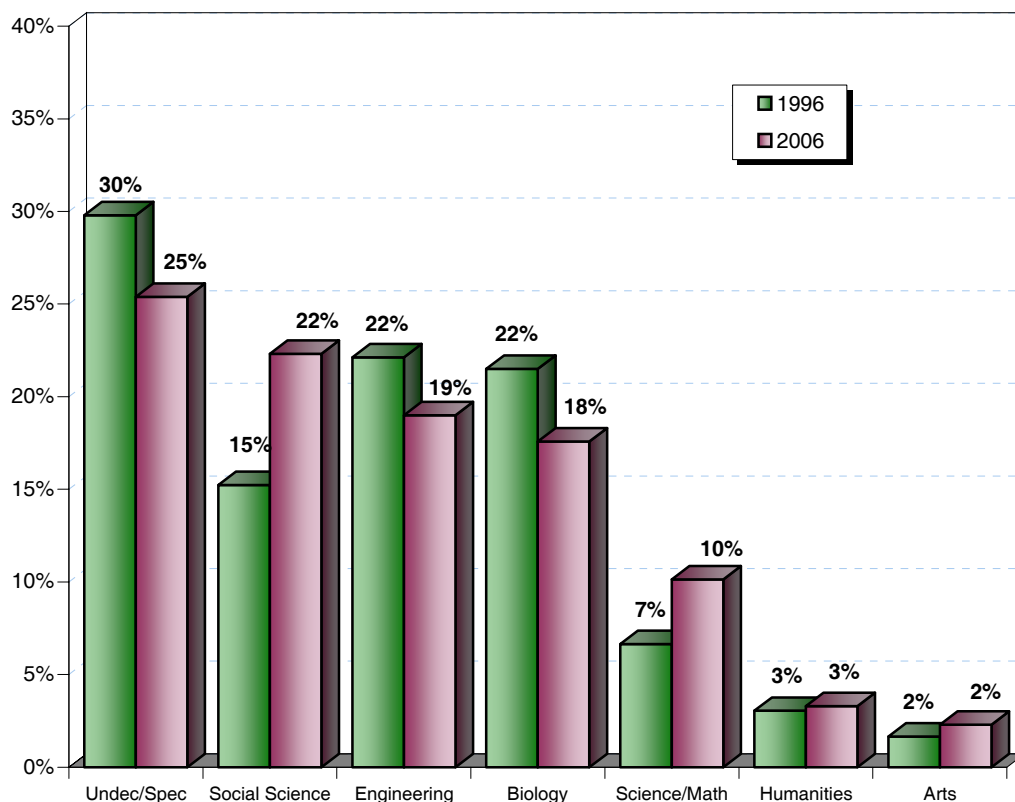


Table 16.

**First-Time Freshmen
by Major Department at Time of Admission** **Fall Quarter**

1996			2006		
Major Department	n	%	Major Department	n	%
Biology	586	21.5%	Biology	807	17.6%
Bioengineering	306	11.2%	Chemistry	279	6.1%
Psychology	135	5.0%	Bioengineering	241	5.3%
Computer Science & Eng. (CSE)	128	4.7%	Economics	233	5.1%
Applied Mechanics & Eng. (AMES)	102	3.7%	Mechanical & Aerospace Eng.	233	5.1%
Chemistry	99	3.6%	Political Science	217	4.7%
Economics	79	2.9%	Psychology	177	3.9%
Political Science	76	2.8%	Computer Science & Eng. (CSE)	147	3.2%
Electrical & Computer Eng. (ECE)	67	2.5%	Communications	125	2.7%
Communications	53	1.9%	International Studies	125	2.7%
Literature	51	1.9%	Electrical & Computer Eng. (ECE)	117	2.5%
Physics	44	1.6%	Mathematics	116	2.5%
Mathematics	28	1.0%	Structural Engineering	92	2.0%
History	26	1.0%	Literature	84	1.8%
Sociology	22	0.8%	Visual Arts	59	1.3%
Visual Arts	20	0.7%	History	49	1.1%
Anthropology	17	0.6%	Chemical Engineering	42	0.9%
Theatre	14	0.5%	Physics	40	0.9%
Music	11	0.4%	Cognitive Science	31	0.7%
Earth Sciences	10	0.4%	Theatre	29	0.6%
Cognitive Science	9	0.3%	Anthropology	27	0.6%
Human Development	7	0.3%	Sociology	27	0.6%
Linguistics	4	0.1%	Environmental Systems	24	0.5%
Philosophy	4	0.1%	Music	17	0.4%
Urban Studies	4	0.1%	Philosophy	16	0.3%
Subtotal	1,902	64.0%	Subtotal	3,354	73.1%
Other Majors	11	0.4%	Other Majors	70	1.5%
Undeclared Majors	812	29.8%	Undeclared Majors	1,165	25.4%
TOTAL	2,725	100.0%	TOTAL	4,589	100.0%

Similar to 1996, biology is the most popular declared major among new freshmen in 2006; approximately 18% of all new freshmen report majoring in biology.

Table 17.

First-Time Freshmen by College **Fall Quarter**

College	1996	2001	2002	2003	2004	2005	2006	10 Year Δ
• Revelle	601 22%	848 21%	839 20%	695 18%	701 18%	756 20%	736 16%	+22%
• John Muir	570 21%	811 20%	763 18%	655 17%	646 17%	640 17%	962 21%	+69%
• Thurgood Marshall	569 21%	803 20%	748 18%	724 19%	670 17%	667 18%	769 17%	+35%
• Earl Warren	524 19%	776 19%	809 19%	625 16%	658 17%	582 16%	691 15%	+32%
• Eleanor Roosevelt	461 17%	743 19%	804 19%	706 19%	743 19%	608 16%	723 16%	+57%
• Sixth	NA NA	NA NA	280 7%	394 10%	456 12%	467 13%	708 15%	NA
Total	2,725	3,981	4,243	3,799	3,874	3,720	4,589	+68%

Almost one-half of all first-time freshmen come to UCSD from the Los Angeles area. Almost one-quarter are from the San Francisco area.

Table 18.

First-Time Freshmen by Home Location **Fall Quarter**

Home Location	1996	2001	2002	2003	2004	2005	2006	10 Year Δ
• San Diego	697 26%	699 18%	754 18%	630 17%	628 16%	503 14%	591 13%	-15%
• Los Angeles	1,136 42%	1,641 41%	1,852 44%	1,694 45%	1,806 47%	1,736 47%	2,089 46%	+84%
• San Francisco	480 18%	879 22%	923 22%	785 21%	806 21%	820 22%	1,101 24%	+129%
• Other CA	328 12%	543 14%	577 14%	508 13%	439 11%	413 11%	477 10%	+45%
• Out-of-State	63 2%	131 3%	66 2%	149 4%	111 3%	156 4%	211 5%	+235%
• Foreign	21 1%	88 2%	71 2%	33 1%	84 2%	92 2%	120 3%	+471%
Total	2,725	3,981	4,243	3,799	3,874	3,720	4,589	+68%

Table 19.

First-Time Freshmen by 1st Generation College Status Fall Quarter

College Status	1996	2001	2002	2003	2004	2005	2006	10 Year Δ
• First Generation	563 21%	858 22%	876 21%	1,072 28%	1,118 29%	1,037 28%	1,262 28%	+124%
• Not First Generation	2,162 79%	3,123 78%	3,367 79%	2,727 72%	2,756 71%	2,683 72%	3,327 72%	+54%
Total	2,725	3,981	4,243	3,799	3,874	3,720	4,589	+68%

The majority (72%) of new freshmen have at least one parent who has graduated from a two-year junior college or four-year college/university.

Table 20.

First-Time Freshmen by Income Group Fall Quarter

Income	1996*	2001	2002	2003	2004	2005	2006	10 Year Δ
• High (≥\$98,401)	735 27%	1,114 28%	1,054 25%	938 25%	796 21%	887 24%	1,234 27%	+68%
• Medium High (\$65,601 - \$98,400)	573 21%	584 15%	560 13%	479 13%	443 11%	468 13%	566 12%	-1%
• Medium Low (\$32,801 - \$65,600)	605 22%	842 21%	891 21%	810 21%	826 21%	792 21%	985 21%	+63%
• Low (≤\$32,800)	508 19%	659 17%	932 22%	825 22%	931 24%	854 23%	994 22%	+96%
• Missing	304 11%	782 20%	806 19%	747 20%	878 23%	719 19%	810 18%	+166%
Total	2,725	3,981	4,243	3,799	3,874	3,720	4,589	+68%

* 1996 Income Categories:
 High = Income ≥ \$87,001
 Medium High = \$58,001-\$87,000
 Medium Low = \$29,001-\$58,000
 Low = Income ≤ \$29,000

Table 21.

First-Time Freshmen by Athletic Status Fall Quarter

College Status	1996	2001	2002	2003	2004	2005	2006*	10 Year Δ
• Athlete	NA	NA	234 6%	200 5%	162 4%	159 4%	NA	NA
• Non-Athlete	NA	NA	4,009 94%	3,599 95%	3,712 96%	3,561 96%	NA	NA
Total	2,725	3,981	4,243	3,799	3,874	3,720	4,589	+68%

* 2006 Athlete data not available until Winter Quarter 2007.


Table 22.

Major* Feeder High Schools for First-time Freshmen **Fall Quarter**

High School	City	Number from H.S. Registered at UCSD in Fall 2006	Percent of UCSD's Total 2005 Freshman Enrollment	Average H.S. GPA of Registered Freshmen	Average SAT I of Registered Freshmen	High School Quintile Rank
Arcadia High School	Arcadia	61	1.3%	3.81	1311	First
Mission San Jose High School	Fremont	57	1.2%	3.88	1351	First
Diamond Bar High School	Diamond Bar	56	1.2%	3.88	1281	First
Walnut High School	Walnut	49	1.1%	3.90	1301	First
Lynbrook High School	San Jose	47	1.0%	3.87	1370	First
Monta Vista High School	Cupertino	42	0.9%	3.83	1371	First
Lowell High School	San Francisco	36	0.8%	3.76	1301	First
Palos Verdes Penn. High School	Rolling Hills	33	0.7%	3.83	1285	First
Cerritos High School	Cerritos	32	0.7%	3.89	1272	First
San Marino High School	San Marino	30	0.7%	3.81	1346	First
Torrey Pines High School	San Diego	28	0.6%	3.88	1255	First
Henry M. Gunn Senior High School	Palo Alto	28	0.6%	3.90	1321	First
Mark Keppel High School	Alhambra	27	0.6%	3.72	1249	First
University High School	Irvine	27	0.6%	3.79	1377	First
San Gabriel High School	San Gabriel	27	0.6%	3.72	1123	Fourth
Temple City High School	Temple City	27	0.6%	3.95	1230	Second
Northwood High School	Irvine	26	0.6%	3.91	1325	First
Sunny Hills High School	Fullerton	24	0.5%	3.79	1298	First
Van Nuys High School	Van Nuys	24	0.5%	3.71	1269	Fourth
Palo Alto Senior High School	Palo Alto	23	0.5%	3.81	1367	First
Leland High School	San Jose	23	0.5%	3.91	1331	First
Rancho Bernardo High School	San Diego	22	0.5%	3.85	1316	First
Homestead High School	Cupertino	22	0.5%	3.94	1324	First
Westlake High School	West Lake	22	0.5%	4.02	1325	First
Cleveland High School	Reseda	21	0.5%	3.88	1191	Fourth
Mira Mesa High School	San Diego	21	0.5%	4.07	1190	Second
Westview High School	San Diego	21	0.5%	4.02	1297	First
Thousand Oaks High School	Thousand Oaks	21	0.5%	3.96	1268	First
Gretchin Whitney High School	Cerritos	20	0.4%	3.69	1386	First
Castro Valley High School	Castro Valley	19	0.4%	3.98	1228	First
Warren High School	Downey	19	0.4%	3.81	1172	Third
Scripps Ranch High School	San Diego	19	0.4%	3.94	1350	First
Saratoga High School	Saratoga	19	0.4%	3.81	1366	First
James Logan High School	Union City	18	0.4%	3.94	1239	Second
La Canada High School	La Canada	18	0.4%	3.83	1329	First
Independence High School	San Jose	18	0.4%	3.82	1203	Fourth
South High School	Torrance	18	0.4%	3.90	1288	First
Calexico High School	Calexico	17	0.4%	3.93	1034	Fifth
Carlsbad High School	Carlsbad	17	0.4%	4.01	1261	First
Troy High School	Fullerton	17	0.4%	3.74	1428	First
Crescenta Valley High School	La Crescenta	17	0.4%	3.84	1312	First
Santa Monica High School	Santa Monica	17	0.4%	3.97	1207	Second
El Camino Real High School	Woodland Hills	17	0.4%	3.69	1292	First
Subtotal (Number of High Schools = 43)		1147	25.0%			
Other High Schools (Number of High Schools = 1,021)		3,442	75.0%			
Total (Number of High Schools = 1,064)		4,589	100.0%			

Arcadia High School in the Los Angeles area and Mission San Jose High School in the San Jose area top the list of major feeder schools for the fall 2006 freshman cohort.

* Seventeen or more students



**High School
Grades and
SAT Scores**

■ Academic Preparation: A Decade of Change

Academic preparation of incoming freshmen, as measured by high school GPA and SAT scores, have remained high over the past decade. The average SAT score in 2006 is 1243, and the average GPA is 3.93.

Table 23.

Freshman Cohort by HS GPA and SAT Score Averages Fall Quarter

First-Time Freshmen	1996	2001	2002	2003 ²	2004	2005	2006
• HS GPA ¹	3.90	3.95	3.94	3.96	3.96	3.94	3.93
• SAT I (Verbal & Math)	1224	1264	1239	1257	1242	1253	1243

¹ GPAs may exceed 4.0 with credit given for honors courses.

² SAT I scores reflect the higher of ACT scores converted to SAT Scores.

Table 24.

Freshman Cohort by Academic Indicator Ranges Fall Quarter

High School GPA Range	Percentage in Range		SAT I Composite Score Range	Percentage in Range	
	1996	2006		1996	2006
• 4.0 - High	43%	45%	• 1500 - 1600	2%	3%
• 3.90 - 3.99	11%	14%	• 1300 - 1499	29%	36%
• 3.60 - 3.89	32%	32%	• 1200 - 1299	30%	28%
• 3.30 - 3.59	12%	9%	• 1000 - 1199	34%	27%
• Low - 3.29	2%	1%	• Low - 999	5%	6%
Total	100%	100%	Total	100%	100%

Number of Honors Courses: 10th & 11th Grade	Percentage in Range		Number of College Preparatory (A-G) Courses*	Percentage in Range	
	1996	2006		1996	2006
• More than 8	32%	4%	• More than 50	11%	31%
• 7 - 8	22%	5%	• 46 - 50	22%	33%
• 5 - 6	18%	14%	• 41 - 45	36%	28%
• 1 - 4	23%	57%	• 36 - 40	28%	8%
• 0	5%	20%	• 30 - 35	3%	1%
Total	100%	100%	Total	100%	100%

* The G requirement went into effect in 2003.

Figure 14.

Academic Preparation: 1995-2006 Comparison Fall Quarter

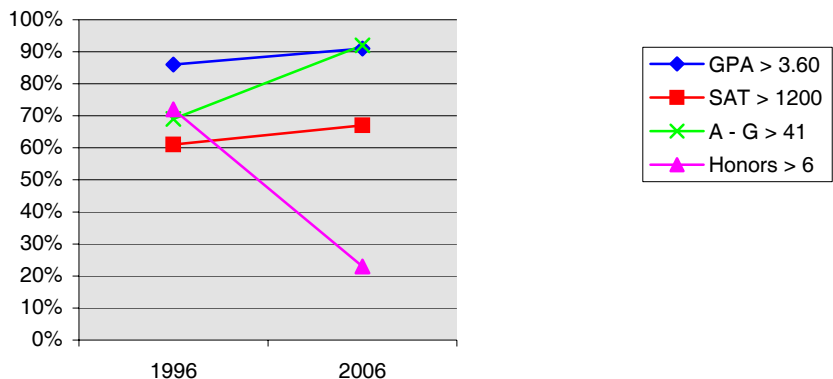


Table 25.

High School GPA¹ by Gender, Ethnicity, Major Field of Study, Home Location, 1st Generation College Status & Income Fall Quarter

First-Time Freshmen GPA	1996 ² Average	2001 Average	2002 Average	2003 Average	2004 Average	2005 Average	2006 Average
• Gender							
Female	3.92	3.97	3.95	3.97	3.98	3.95	3.94
Male	3.88	3.93	3.91	3.93	3.93	3.91	3.91
• Ethnicity							
African-American	3.60	3.94	3.76	3.90	3.90	3.88	3.73
Asian	3.89	3.91	3.89	3.91	3.92	3.89	3.89
Mexican-American	3.72	3.95	3.87	3.88	3.89	3.88	3.86
Filipino	4.00	3.97	4.02	4.06	4.02	4.03	4.02
Latino	4.05	3.94	3.87	3.94	3.95	3.90	3.85
Native-American	3.80	3.93	4.02	4.12	4.02	4.04	3.88
Caucasian	3.94	4.00	3.99	4.01	4.02	4.00	3.99
• Major Field of Study							
Arts	3.79	3.93	3.90	3.93	3.91	3.87	3.91
Humanities	3.78	3.89	3.89	3.93	3.91	3.87	3.87
Engineering	3.93	3.99	3.99	4.02	3.99	3.97	3.99
Science/Math	3.97	3.97	3.97	3.98	4.00	3.97	3.98
Biology	3.94	3.99	3.99	3.99	4.01	3.99	3.96
Social Science	3.79	3.91	3.87	3.90	3.91	3.88	3.86
Undec./Special	3.91	3.93	3.91	3.93	3.94	3.92	3.90
• Home Location							
San Diego	3.96	3.99	3.97	3.99	4.00	4.00	4.00
Los Angeles	3.87	3.92	3.91	3.92	3.93	3.90	3.89
San Francisco	3.85	3.92	3.91	3.95	3.95	3.92	3.90
Other CA	3.95	4.02	4.01	4.03	4.04	4.01	4.01
Out of State	3.96	4.10	4.07	4.04	4.07	4.00	4.05
• First Generation College Status							
First Generation	3.88	3.93	3.88	3.90	3.91	3.88	3.86
Not First Generation	3.91	3.96	3.95	3.98	3.98	3.96	3.95
• Income Group							
High (≥\$98,401)	3.90	3.97	3.97	4.01	4.00	3.98	3.98
Med. High (\$65,601-\$98,400)	3.92	4.00	3.99	4.00	4.02	4.00	3.96
Med. Low (\$32,801-\$65,600)	3.91	3.92	3.91	3.94	3.94	3.91	3.89
Low (≤\$32,800)	3.86	3.90	3.86	3.86	3.88	3.84	3.84
Missing	NA	3.96	3.97	3.99	3.99	3.98	3.98
• Athletes³							
Athletes	NA	NA	3.94	3.92	3.91	3.91	NA
Non-Athletes	NA	NA	3.94	3.96	3.96	3.94	NA
Total	3.90	3.95	3.94	3.96	3.96	3.94	3.93

Average high school GPAs vary somewhat by gender, ethnicity, and major field of study. For example, the average GPA of females is typically higher than that of males.

¹ GPAs may exceed 4.0 with credit given for honors courses.

² 1996 Income Categories: High = Income ≥ \$87,001 Medium Low = \$29,001-\$58,000
 Medium High = \$58,001-\$87,000 Low = Income ≤ \$29,000

³ 2006 Athlete data not available until Winter Quarter 2007.

Table 26.

SAT¹ I Scores by Gender, Ethnicity, Major Field of Study, Home Location, 1st Generation College Status & Income Fall Quarter

First-Time Freshmen SAT I	1996 ² Average	2001 Average	2002 Average	2003 Average	2004 Average	2005 Average	2006 Average
• Gender							
Female	1201	1239	1211	1228	1217	1230	1217
Male	1253	1293	1274	1293	1276	1282	1277
• Ethnicity							
African-American	1106	1155	1107	1119	1109	1149	1130
Asian	1214	1273	1253	1266	1258	1267	1258
Mexican-American	1088	1142	1092	1104	1091	1119	1089
Filipino	1178	1209	1162	1208	1184	1194	1196
Latino	1204	1201	1144	1197	1167	1152	1140
Native-American	1176	1273	1255	1264	1261	1217	1232
Caucasian	1263	1282	1270	1290	1272	1285	1276
• Major Field of Study							
Arts	1200	1246	1207	1227	1235	1238	1240
Humanities	1265	1276	1239	1248	1265	1289	1251
Engineering	1243	1297	1276	1285	1275	1289	1270
Science/Math	1234	1260	1219	1227	1226	1227	1245
Biology	1216	1258	1233	1246	1247	1247	1245
Social Science	1195	1240	1220	1226	1222	1243	1222
Undec./Special	1226	1253	1236	1237	1234	1245	1239
• Home Location							
San Diego	1185	1208	1170	1197	1182	1212	1189
Los Angeles	1222	1266	1240	1250	1242	1246	1232
San Francisco	1273	1301	1288	1306	1291	1286	1286
Other CA	1226	1250	1237	1257	1215	1240	1229
Out of State	1300	1337	1325	1328	1321	1308	1296
• First Generation College Status							
First Generation	1134	1184	1174	1168	1160	1169	1150
Not First Generation	1248	1285	1256	1292	1276	1285	1279
• Income Group							
High (≥\$98,401)	1269	1303	1288	1311	1289	1305	1293
Med. High (\$65,601-\$98,400)	1241	1267	1260	1272	1251	1264	1257
Med. Low (\$32,801-\$65,600)	1208	1236	1217	1233	1219	1232	1218
Low (≤\$32,800)	1134	1195	1150	1166	1161	1164	1148
Missing	NA	1291	1288	1304	1303	1310	1305
• Athletes³							
Athletes	NA	NA	1258	1245	1237	1263	NA
Non-Athletes	NA	NA	1238	1245	1243	1253	NA
Total	1224	1264	1239	1257	1242	1253	1243

¹ SAT scores were "recentered" starting with the 1996 freshman cohort.

² 1996 Income Categories: High = Income ≥ \$87,001 Medium Low = \$29,001-\$58,000
 Medium High = \$58,001-\$87,000 Low = Income ≤ \$29,000

³ 2006 Athlete data not available until Winter Quarter 2007.

The average SAT composite scores tend to vary by gender, ethnicity, major, etc. Males typically earn higher SAT scores compared to females.

Table 27.

Intercampus Comparison¹ of Average SAT I Composite Scores Fall Quarter

UC Campus	1996	1997	1998	1999	2000	2001	2002 ²	2003 ²	2004 ²	2005 ²	2006 ²
• Berkeley	1296	1311	1330	1305	1308	1293	1303	1303	1314	1324	1311
• Davis	1162	1162	1149	1165	1170	1163	1180	1184	1170	1187	1153
• Irvine	1121	1117	1126	1155	1171	1167	1179	1176	1209	1192	1189
• Los Angeles	1228	1239	1263	1262	1266	1256	1264	1278	1290	1284	1283
• Merced ³	NA	NA	NA	NA	NA	NA	NA	NA	NA	1070	1050
• Riverside	1046	1062	1061	1057	1056	1068	1057	1064	1080	1078	1043
• San Diego	1221	1233	1240	1250	1259	1264	1239	1245	1242	1253	1243
• Santa Barbara	1116	1143	1158	1176	1181	1183	1172	1187	1184	1203	1183
• Santa Cruz	1134	1137	1135	1150	1143	1150	1138	1143	1157	1159	1134
Systemwide	1180	1188	1196	1198	1199	1197	1195	1199	1208	1211	NA

¹ Source: University of California, Frequency Distribution of College Entrance Examination Board (CEEB) Test Scores For Entering Freshmen CSS 050B.

² 2002-2006 data based on personal contact with representatives for each UC Campus and are subject to change.

³ Merced enrolled its first freshman class in Fall 2005.

When compared on the basis of average SAT scores, UCSD ranks among the top three universities in the UC system.

Table 28.

UCSD's Position Relative to Other UC Campuses on SAT I Scores Fall Quarter

Rank	1996	1997	1998	1999	2000	2001	2002	2003	2004	2005	2006
• 1	UCB	UCB	UCB	UCB	UCB	UCB	UCB	UCB	UCB	UCB	UCB
• 2	UCLA	UCLA	UCLA	UCLA	UCLA	UCSD	UCLA	UCLA	UCLA	UCLA	UCLA
• 3	UCSD	UCSD	UCSD	UCSD	UCSD	UCLA	UCSD	UCSD	UCSD	UCSD	UCSD
• 4	UCD	UCD	UCSB	UCSB	UCSB	UCSB	UCD	UCSB	UCI	UCSB	UCI
• 5	UCSC	UCSB	UCD	UCD	UCI	UCI	UCI	UCD	UCSB	UCI	UCSB
• 6	UCI	UCSC	UCSC	UCI	UCD	UCD	UCSB	UCI	UCD	UCD	UCD
• 7	UCSB	UCI	UCI	UCSC	UCSC	UCSC	UCSC	UCSC	UCSC	UCSC	UCSC
• 8	UCR	UCR	UCR	UCR	UCR	UCR	UCR	UCR	UCR	UCR	UCM
• 9										UCM	UCR



**New
Transfer
Students**

■ New Transfer Students

Almost nine thousand transfer students applied for admission to UCSD for fall 2006. Approximately, 69% of these students were admitted to UCSD, and 1,482 of these students registered resulting in a yield of 26%.

Table 29.

New Transfers: Applicants, Admits & Registered Fall Quarter

New Transfers	1996	2001	2002	2003	2004	2005	2006	10 Year Δ
• Applicants	4,372	7,041	7,890	8,854	9,825	9,291	8,945	+105%
• Admits	2,426	4,412	4,860	5,058	4,824	5,939	5,755	+137%
Admit/Applicant Rate	55%	63%	62%	57%	49%	64%	64%	
• Registered	880	1,250	1,498	1,455	1,325	1,680	1,482	+68%
Registered/Admit Rate	36%	28%	31%	29%	27%	28%	26%	

Figure 15.

New Transfers: Applicants, Admits & Registered Fall Quarter

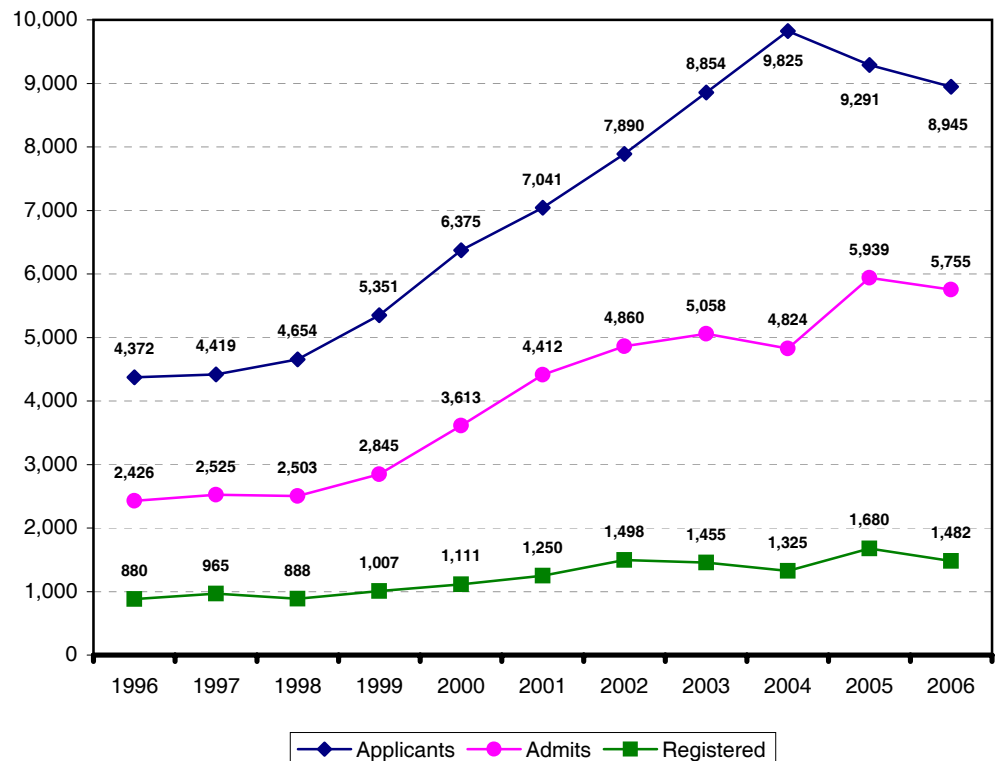


Table 30.

New Transfers by Gender Fall Quarter

Gender	1996	2001	2002	2003	2004	2005	2006	10 Year Δ
• Female	382 43%	588 47%	724 48%	676 46%	631 48%	785 47%	668 45%	+75%
• Male	498 57%	662 53%	774 52%	779 54%	694 52%	895 53%	814 55%	+63%
Total	880	1,250	1,498	1,455	1,325	1,680	1,482	+68%

Unlike the 2006 freshman cohort, at 55%, male transfer students outnumber women by ten percent.

Figure 16.

New Transfers by Gender Fall Quarter

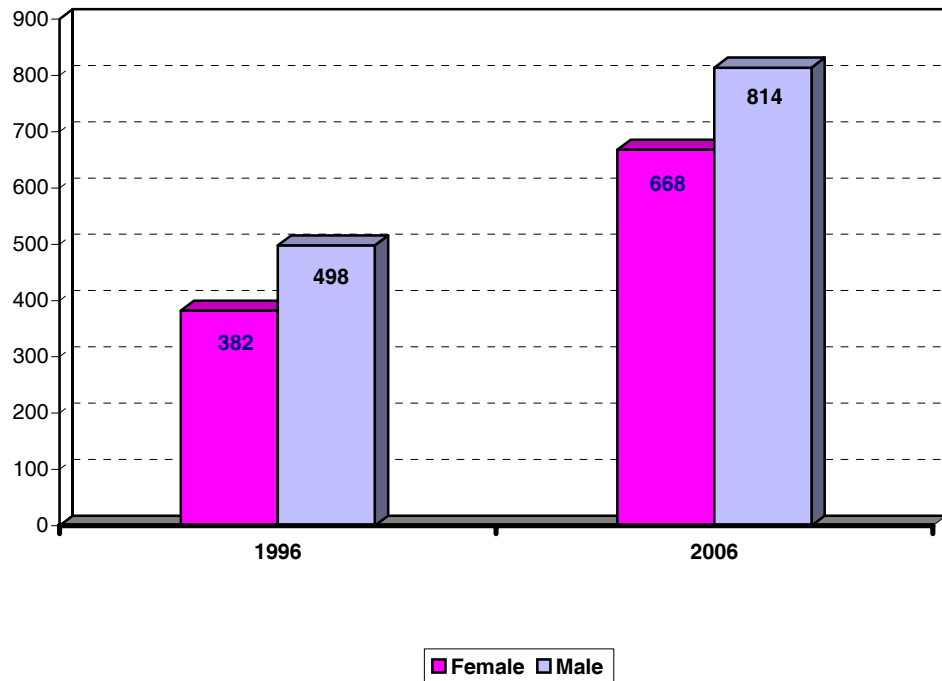


Table 31.

New Transfers by Ethnicity

Fall Quarter

The proportion of Asian, those self-classified as "Other," African-American, and Latino students has increased over the past decade. The proportion of Mexican-American, Filipino, and Caucasian students has declined.

Ethnicity	1996	2001	2002	2003	2004	2005	2006	10 Year Δ
• African-American	12 1%	23 2%	24 2%	22 2%	24 2%	27 2%	24 2%	+100%
• Asian	218 25%	330 26%	491 33%	481 33%	387 29%	549 33%	504 34%	+131%
• Mexican-American	80 9%	106 8%	121 8%	102 7%	112 8%	138 8%	121 8%	+51%
• Filipino	46 5%	56 4%	54 4%	49 3%	55 4%	69 4%	50 3%	+9%
• Latino	28 3%	38 3%	44 3%	43 3%	44 3%	39 2%	55 4%	+96%
• Native-American	6 1%	10 1%	8 1%	10 1%	5 0%	9 1%	11 1%	+83%
• Caucasian	413 47%	508 41%	538 36%	502 35%	472 36%	600 36%	525 35%	+27%
• Other/Undeclared	77 9%	179 14%	218 15%	246 17%	226 17%	249 15%	192 13%	+149%
Total	880	1,250	1,498	1,455	1,325	1,680	1,482	+68%

Table 32.

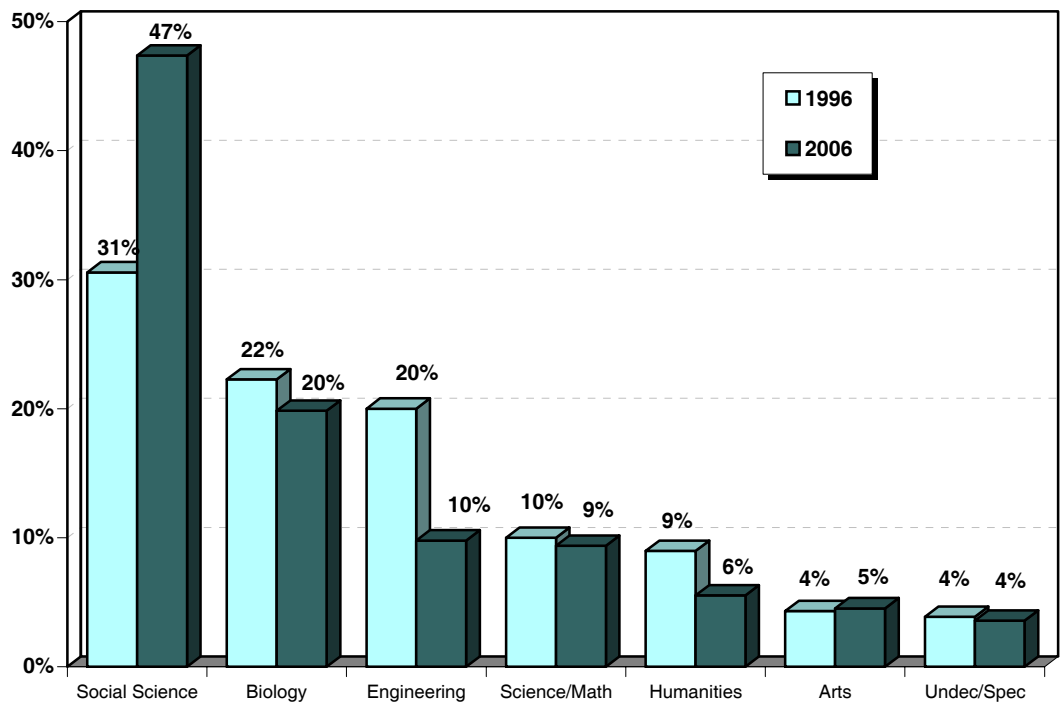
New Transfers by Major Field of Study Fall Quarter

Major Field of Study	1996	2001	2002	2003	2004	2005	2006	10 Year Δ
• Arts	38 4%	101 8%	110 7%	102 7%	68 5%	73 4%	67 5%	+76%
• Humanities	79 9%	73 6%	96 6%	86 6%	71 5%	94 6%	82 6%	+4%
• Engineering	176 20%	273 22%	333 22%	356 24%	220 17%	256 15%	145 10%	-18%
• Science/Math	88 10%	102 8%	115 8%	89 6%	115 9%	157 9%	139 9%	+58%
• Biology	196 22%	177 14%	188 13%	142 10%	180 14%	290 17%	294 20%	+50%
• Social Science	269 31%	503 40%	607 41%	619 43%	641 48%	771 46%	702 47%	+161%
• Undeclared/ Special	34 4%	21 2%	49 3%	61 4%	30 2%	39 2%	53 4%	+56%
Total	880	1,250	1,498	1,455	1,325	1,680	1,482	+68%

Almost one-half of all new transfer students declared a major in the social sciences.

Figure 17.

New Transfers by Major Field of Study Fall Quarter



Ninety-two percent of new transfer students attended a California Community College prior to enrolling at UCSD. The largest number of new transfer students come from either Los Angeles or San Diego county.

Table 33.

New Transfers by Transfer Institution Fall Quarter

Transfer Institution	1996	2001	2002	2003	2004	2005	2006	10 Year Δ
• California Community Colleges	816 93%	1,164 93%	1,381 92%	1,380 95%	1,215 92%	1,567 93%	1,368 92%	+68%
Transfer Admission Guarantee (TAG)	185 21%	156 12%	201 13%	175 12%	294 22%	327 19%	345 23%	+86%
Non-TAG	631 72%	1,008 81%	1,297 87%	1,280 88%	921 70%	1,240 74%	1,023 69%	+62%
• Inter-campus Transfer/ Other 4 yr. College	57 6%	75 6%	87 6%	69 5%	104 8%	107 6%	109 7%	+91%
• Other/Unknown	7 1%	11 1%	30 2%	6 0%	6 0%	6 0%	5 0%	-29%
Total	880	1,250	1,498	1,455	1,325	1,680	1,482	+68%

Table 34.

New Transfers by Home Location Fall Quarter

Home Location	1996	2001	2002	2003	2004	2005	2006	10 Year Δ
• San Diego	420 48%	374 30%	461 31%	411 28%	465 35%	523 31%	446 30%	+6%
• Los Angeles	256 29%	386 31%	440 29%	426 29%	393 30%	545 32%	493 33%	+93%
• San Francisco	99 11%	218 17%	231 15%	271 19%	218 16%	303 18%	251 17%	+154%
• Other California	67 8%	147 12%	161 11%	143 10%	106 8%	138 8%	137 9%	+104%
• Out-of-State	5 1%	6 0%	10 1%	11 1%	8 1%	9 1%	12 1%	+140%
• Foreign	33 4%	119 10%	195 13%	193 13%	135 10%	162 10%	143 10%	+333%
Total	880	1,250	1,498	1,455	1,325	1,680	1,482	+68%

Table 35.

New Transfers by Undergraduate College Fall Quarter

Undergraduate College	1996	2001	2002	2003	2004	2005	2006	10 Year Δ
• Revelle	149 17%	217 17%	264 18%	223 15%	190 14%	282 17%	215 15%	+44%
• John Muir	227 26%	270 22%	314 21%	333 23%	242 18%	411 24%	296 20%	+30%
• Thurgood Marshall	164 19%	277 22%	338 23%	309 21%	306 23%	376 22%	290 20%	+77%
• Earl Warren	277 31%	282 23%	327 22%	369 25%	305 23%	254 15%	249 17%	-10%
• Eleanor Roosevelt	63 7%	204 16%	255 17%	221 15%	213 16%	247 15%	295 20%	+368%
• Sixth	NA NA	NA NA	NA NA	NA NA	69 5%	110 7%	137 9%	NA
Total	880	1,250	1,498	1,455	1,325	1,680	1,482	+68%

In 2006, John Muir, Thurgood Marshall, and Eleanor Roosevelt College enrolled the same proportion (20%) of new transfer students.

Figure 18.

New Transfers by Undergraduate College Fall Quarter

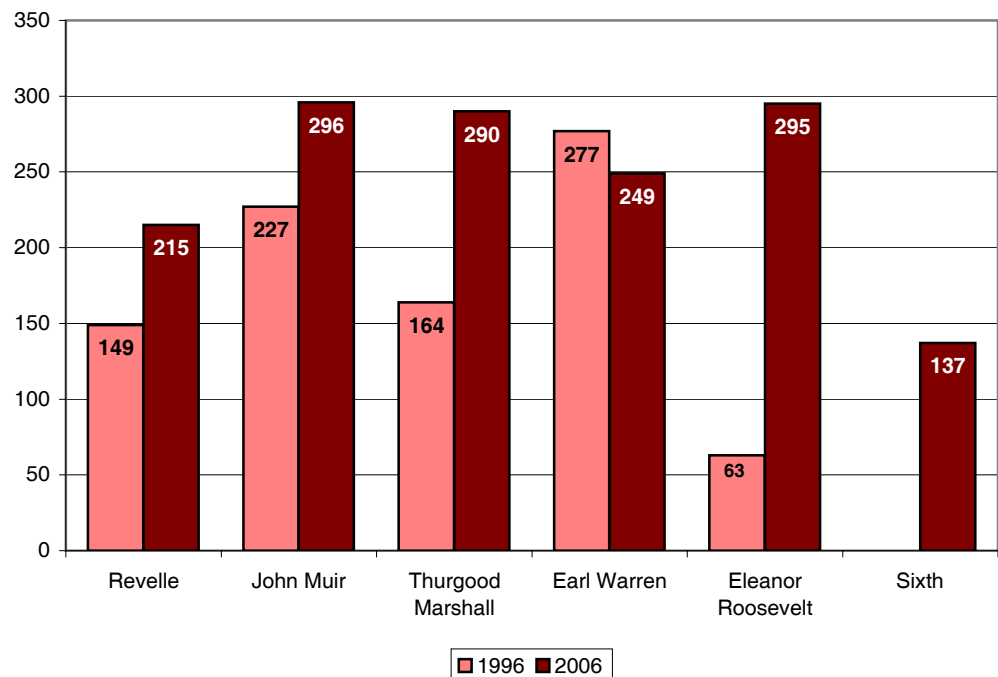


Table 36.

New Transfers by 1st Generation College Status Fall Quarter

College Status	1996	2001	2002	2003	2004	2005	2006	10 Year Δ
• First Generation	348 40%	388 31%	394 26%	448 31%	420 32%	542 32%	458 31%	+32%
• Not First Generation	532 60%	862 69%	1,104 74%	1,007 69%	905 68%	1,138 68%	1,024 69%	+92%
Total	880	1,250	1,498	1,455	1,325	1,680	1,482	+68%

The majority (69%) of new transfer students have at least one parent who has graduated from a two-year junior college or four-year college/university.

Table 37.

New Transfers by Income Group Fall Quarter

Income	1996*	2001	2002	2003	2004	2005	2006	10 Year Δ
• High (≥\$98,401)	9% 11%	249 20%	270 18%	248 17%	255 19%	304 18%	280 19%	+192%
• Medium High (\$65,601 - \$98,400)	9% 10%	154 12%	212 14%	170 12%	143 11%	200 12%	158 11%	+72%
• Medium Low (\$32,801 - \$65,600)	14% 16%	245 20%	294 20%	289 20%	225 17%	255 15%	215 15%	+48%
• Low (≤\$32,800)	16% 19%	233 19%	259 17%	289 20%	272 21%	245 15%	242 16%	+44%
• Missing	37% 43%	369 30%	463 31%	459 32%	430 32%	676 40%	587 40%	+55%
Total	880	1,250	1,498	1,455	1,325	1,680	1,482	+68%

* 1996 Income Categories:
 High = Income ≥ \$87,001
 Medium High = \$58,001-\$87,000
 Medium Low = \$29,001-\$58,000
 Low = Income ≤ \$29,000

Table 38.

New Transfers Freshmen by Athletic Status Fall Quarter

College Status	1996	2001	2002	2003	2004	2005	2006*	10 Year Δ
• Athlete	NA NA	NA NA	60 4%	40 3%	37 3%	35 2%	NA NA	NA
• Non-Athlete	NA NA	NA NA	1,438 96%	1,415 97%	1,288 97%	1,645 98%	NA NA	NA
Total	880	1,250	1,498	1,455	1,325	1,680	1,482	+68%

* 2006 Athlete data not available until Winter Quarter 2007.

Table 39.

Major* Feeder Transfer Institutions **Fall Quarter**

School	City	Enrollment N Fall 2005	% of Total Enrollment
San Diego Mesa College	San Diego	154	10.4%
Palomar College	San Marcos	96	6.5%
De Anza College	Cupertino	95	6.4%
Grossmont Community College	El Cajon	64	4.3%
Santa Monica College	Santa Monica	64	4.3%
Pasadena City College	Pasadena	58	3.9%
Diablo Valley College	Pleasant Hill	51	3.4%
Mira Costa College	Oceanside	51	3.4%
Orange Coast College	Costa Mesa	44	3.0%
Mount San Antonio College	Walnut	38	2.6%
Saddleback Community College South	Mission Viejo	38	2.6%
Southwestern College	Chula Vista	34	2.3%
Moorpark College	Moorpark	31	2.1%
San Diego City College	San Diego	31	2.1%
UC Riverside	Riverside	30	2.0%
Foothill College	Los Altos Hills	28	1.9%
San Diego-Miramar College	San Diego	25	1.7%
UC Santa Cruz	Santa Cruz	24	1.6%
El Camino College	Torrance	23	1.6%
City College of San Francisco	San Francisco	21	1.4%
College of San Mateo	San Mateo	21	1.4%
Santa Barbara City College	Santa Barbara	18	1.2%
Glendale Community College	Glendale	17	1.1%
Los Angeles Pierce College	Woodland Hills	16	1.1%
Fullerton College	Fullerton	15	1.0%
Sacramento City College	Sacramento	15	1.0%
Cuyamaca College	El Cajon	14	0.9%
Irvine Valley College	Irvine	13	0.9%
Cypress College	Cypress	13	0.9%
East Los Angeles College	Los Angeles	13	0.9%
Santa Rosa Junior College	Santa Rosa	13	0.9%
UC Santa Barbara	Santa Barbara	13	0.9%
American River College	Sacramento	12	0.8%
Riverside Community College	Riverside	12	0.8%
Ventura College	Ventura	12	0.8%
West Valley College	Saratoga	12	0.8%
UC Davis	Davis	11	0.7%
Sierra College	Rocklin	10	0.7%
UC Irvine	Irvine	10	0.7%
Subtotal (Number of Transfer Institutions = 39)		1,260	85.0%
Other Institutions (Number of Transfer Institutions = 70)		222	15.0%
Total (Number of Transfer Institutions = 109)		1,482	100.0%

* Ten or more matriculants from named transfer institution.

San Diego Mesa College tops the list of major feeder transfer institutions. Over ten percent of the 2006 transfer cohort (n=154) transferred to UCSD from San Diego Mesa College.



**New
Transfer
Student
Academic
Preparation**

■ Academic Preparation: New Transfer Students

Table 40.

New Transfer Cohort by Transfer GPA Averages							Fall Quarter
Transfer	1996	2001	2002	2003	2004	2005	2006
• Transfer GPA	3.27	3.30	3.32	3.34	3.40	3.32	3.33

Table 41.

New Transfer Cohort by Academic Indicator Ranges			Fall Quarter
Transfer GPA Range	Percentage in Range		
	1996	2006	
• 3.90 - High	4%	6%] 53%
• 3.60 - 3.89	17%	19%	
• 3.30 - 3.59	26%	29%	
• 3.00 - 3.29	32%	32%	
• 2.70 - 2.99	18%	13%	
• Low - 2.69	4%	3%	
Total	100%	100%	

The mean transfer GPA for the 2006 transfer cohort was 3.33. Approximately, one-quarter (25%) of the new transfer cohort had earned a GPA of 3.60 and higher prior to attending UCSD.



**Degrees
Conferred**

■ Degrees Conferred

Table 42.

Degrees Conferred: All Degree Types							Fall Quarter
All Degree Types	1995/1996	2001/2002	2002/2003	2003/2004	2004/2005	2005/2006	10 Year Δ
• Bachelors	3,319 80%	3,922 80%	4,248 79%	4,136 75%	5,043 78%	5,200 77%	+57%
• Masters	384 9%	495 10%	573 11%	785 14%	797 12%	761 11%	+98%
• Candidate in Philosophy	149 4%	117 2%	170 3%	161 3%	170 3%	253 4%	+70%
• Doctor of Philosophy	259 6%	278 6%	279 5%	327 6%	303 5%	376 6%	+45%
• Doctor of Medicine	38 1%	61 1%	128 2%	100 2%	117 2%	186 3%	+389%
Total	4,149	4,873	5,398	5,509	6,430	6,776	+63%

Setting a new record, UCSD awarded more than sixty-seven hundred undergraduate, graduate and professional degrees in 2005/2006.

Figure 19.

Degrees Conferred Undergraduate and Graduate Degree Trends

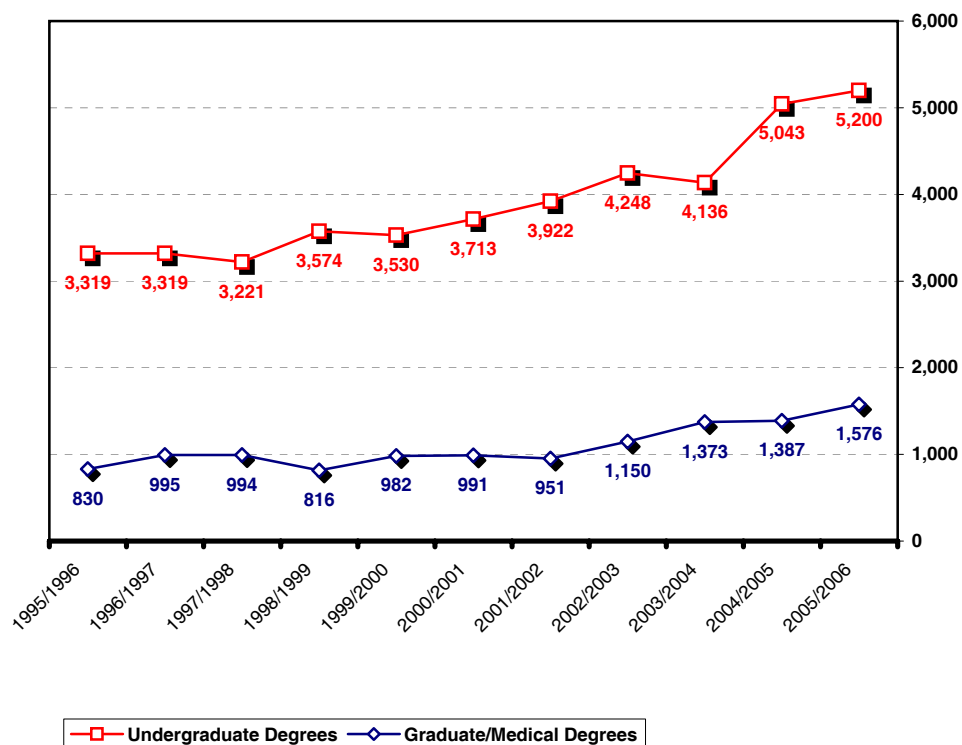


Table 43.

Undergraduate Degrees by Gender Fall Quarter

Gender	1995/1996	2001/2002	2002/2003	2003/2004	2004/2005	2005/2006	10 Year Δ
• Female	1,705 51%	2,113 54%	2,260 53%	2,272 55%	2,658 53%	2,747 53%	+61%
• Male	1,614 49%	1,809 46%	1,988 47%	1,864 45%	2,385 47%	2,453 47%	+52%
Total UG Degrees	3,319	3,922	4,248	4,136	5,043	5,200	+57%

Of the 5,200 undergraduate degrees awarded in 2005/2006, the majority (53%) were awarded to women.

Figure 20.

Undergraduate Degrees by Gender Fall Quarter



Table 44.

Undergraduate Degrees by Ethnicity Fall Quarter

Ethnicity	1995/1996	2001/2002	2002/2003	2003/2004	2004/2005	2005/2006	10 Year Δ
• African-American	77 2%	58 1%	64 2%	50 1%	59 1%	58 1%	-25%
• Asian	690 21%	1,039 26%	1,263 30%	1,276 31%	1,690 34%	1,794 35%	+160%
• Mexican-American	281 8%	284 7%	316 7%	304 7%	349 7%	347 7%	+23%
• Filipino	139 4%	191 5%	204 5%	196 5%	249 5%	271 5%	+95%
• Latino	69 2%	90 2%	91 2%	85 2%	107 2%	116 2%	+68%
• Native-American	39 1%	25 1%	29 1%	15 0%	31 1%	22 0%	-44%
• Caucasian	1,731 52%	1,667 43%	1,692 40%	1,669 40%	1,878 37%	1,879 36%	+9%
• Other/Undeclared	293 9%	568 14%	589 14%	541 13%	680 13%	713 14%	+143%
Total UG Degrees	3,319	3,922	4,248	4,136	5,043	5,200	+57%

Fifty percent of the UCSD bachelor's degrees awarded in 2005/2006 were earned by students of color.

Figure 21.

Undergraduate Degrees by Ethnicity Fall Quarter

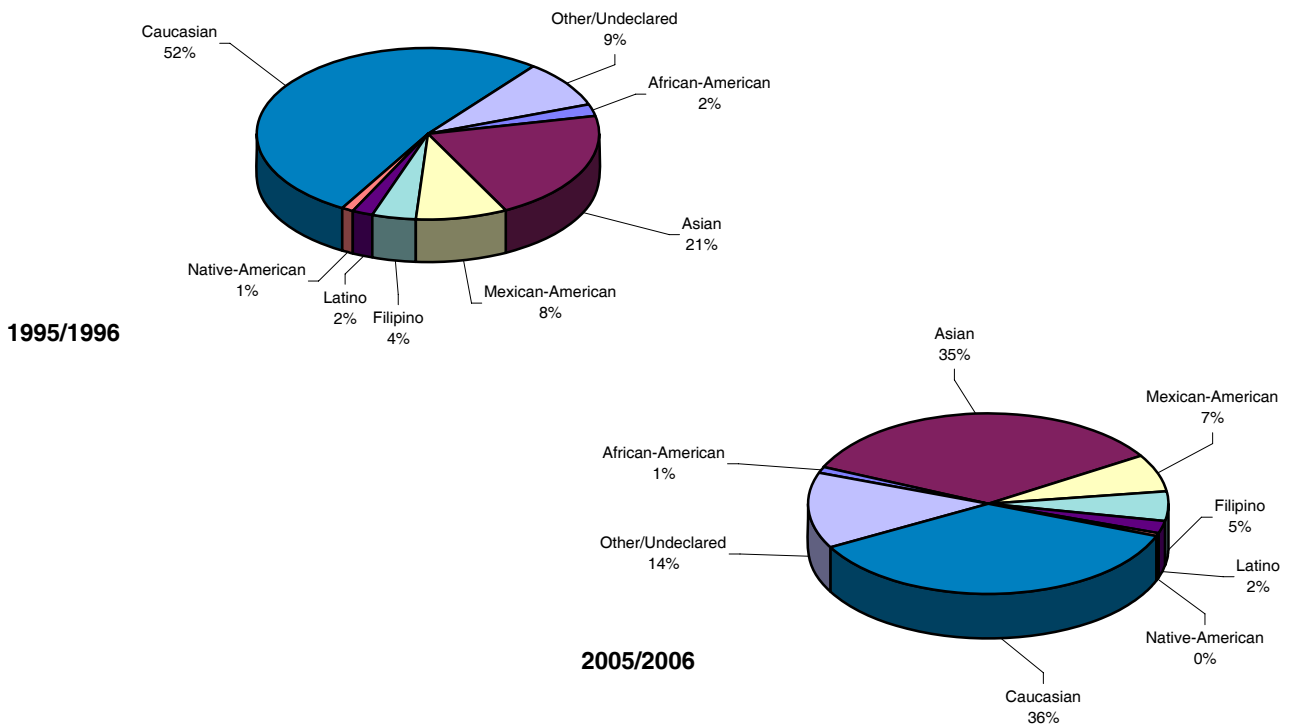


Table 45.

Undergraduate Degrees by Major Field of Study Fall Quarter

Major Field of Study	1995/1996	2001/2002	2002/2003	2003/2004	2004/2005	2005/2006	10 Year Δ
• Arts	161 5%	236 6%	300 7%	281 7%	296 6%	280 5%	+74%
• Humanities	305 9%	244 6%	226 5%	253 6%	259 5%	280 5%	-8%
• Engineering	424 13%	563 14%	674 16%	654 16%	998 20%	933 18%	+120%
• Science/Math	216 7%	242 6%	252 6%	259 6%	327 6%	310 6%	+44%
• Biology	814 25%	715 18%	742 17%	661 16%	752 15%	906 17%	+11%
• Social Science	1,388 42%	1,916 49%	2,051 48%	2,022 49%	2,406 48%	2,486 48%	+79%
• Double/Special	11 0%	6 0%	3 0%	6 0%	5 0%	5 0%	-55%
Total UG Degrees	3,319	3,922	4,248	4,136	5,043	5,200	+57%

Almost one-half (48%) of all bachelor's degrees were awarded to social science majors.

Table 46.

Undergraduate Degrees by College Fall Quarter

College	1995/1996	2001/2002	2002/2003	2003/2004	2004/2005	2005/2006	10 Year Δ
• Revelle	635 19%	725 18%	793 19%	715 17%	879 17%	841 16%	+32%
• John Muir	909 27%	925 24%	937 22%	916 22%	1,008 20%	1,066 21%	+17%
• Thurgood Marshall	675 20%	792 20%	940 22%	932 23%	1,105 22%	1,002 19%	+48%
• Earl Warren	749 23%	979 25%	1,067 25%	1,009 24%	1,363 27%	1,367 26%	+83%
• Eleanor Roosevelt*	351 11%	501 13%	511 12%	564 14%	681 14%	773 15%	+120%
• Sixth**	NA NA	NA NA	NA NA	NA NA	7 0%	151 3%	NA
Total UG Degrees	3,319	3,922	4,248	4,136	5,043	5,200	+57%

* Eleanor Roosevelt College enrolled its first class of undergraduates in 1988.

** Sixth College enrolled its first class of undergraduates in 2002.

Table 47.

Undergraduate Degrees by 1st Generation College Status Fall Quarter

College Status	1995/1996	2001/2002	2002/2003	2003/2004	2004/2005	2005/2006	10 Year Δ
• First Generation	NA	870	998	982	1,189	1,180	NA
	NA	22%	23%	24%	24%	23%	
• Not First Generation	NA	3,052	3,250	3,154	3,854	4,020	NA
	NA	78%	77%	76%	76%	77%	
Total UG Degrees	3,319	3,922	4,248	4,136	5,043	5,200	+57%

Table 48.

Undergraduate Degrees by Income Group Fall Quarter

Income	1995/1996	2001/2002	2002/2003	2003/2004	2004/2005	2005/2006	10 Year Δ
• High (\geq \$98,401)	NA	828	972	905	1,190	1,212	NA
	NA	21%	23%	22%	24%	23%	
• Medium High (\$65,601 - \$98,400)	NA	618	612	618	693	694	NA
	NA	16%	14%	15%	14%	13%	
• Medium Low (\$32,801 - \$65,600)	NA	872	851	833	1,035	1,020	NA
	NA	22%	20%	20%	21%	20%	
• Low (\leq \$32,800)	NA	735	837	742	879	981	NA
	NA	19%	20%	18%	17%	19%	
• Missing	NA	869	976	1,038	1,246	1,293	NA
	NA	22%	23%	25%	25%	25%	
Total UG Degrees	3,319	3,922	4,248	4,136	5,043	5,200	+57%

Table 49.

Time-to-Degree*/Academic Performance
Entered UCSD from High School Fall Quarter

Undergraduate Degrees	1995/1996	2001/2002	2002/2003	2003/2004	2004/2005	2005/2006
• Time-to-Degree						
Average Elapsed Time in Years	4.4 yrs.	4.4 yrs.	4.5 yrs.	4.4 yrs.	4.3 yrs.	4.3 yrs.
Average Elapsed Time in Quarters	13.2 qtrs.	13.2 qtrs.	13.5 qtrs.	13.3 qtrs.	13.0 qtrs.	12.8 qtrs.
• GPA at Graduation						
GPA	3.15	3.14	3.16	3.19	3.19	3.20
GPA ≥ 3.5 (B+ or greater)	22.0%	20.2%	22.7%	25.4%	25.8%	25.9%
3.00 ≤ GPA < 3.5 (B to B+)	44.2%	44.8%	43.4%	42.8%	43.6%	43.4%
2.50 ≤ GPA < 3.00 (C+ to B)	26.8%	27.6%	26.6%	25.9%	25.0%	25.3%
2.0 ≤ GPA < 2.50 (C to C+)	6.9%	7.3%	7.2%	5.9%	5.7%	5.4%
GPA < 2.0	0.1%	0.0%	0.0%	0.0%	0.0%	0.0%

* Time-to-degree is reported in elapsed quarters from first enrollment date to graduation. Only the records of students who enter UCSD in the Fall Quarter are included in time-to-degree calculations. An academic year is defined as three quarters; twelve quarters equal four years. Summer degrees are combined with Fall degrees, and combined, represent one quarter.

The average time-to-degree for undergraduate students entering from high school is approximately 13 quarters or 4.3 years. The average GPA earned by the 2005/2006 graduating class is 3.20.

Figure 22.

Grade Distribution: Degree Recipients Fall Quarter

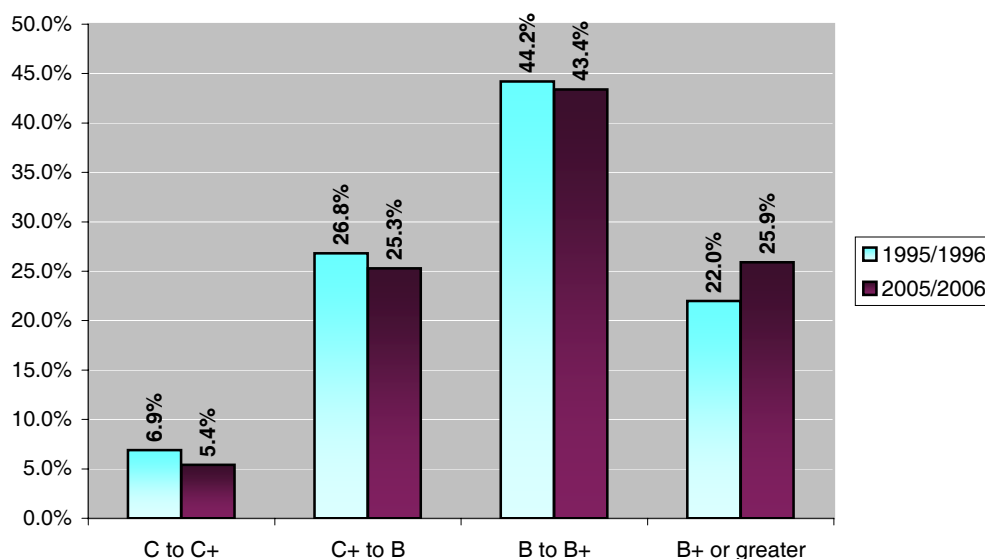


Table 50.

Time-to-Degree*/Academic Performance
Entered UCSD from a Two-Year Community College Fall Quarter

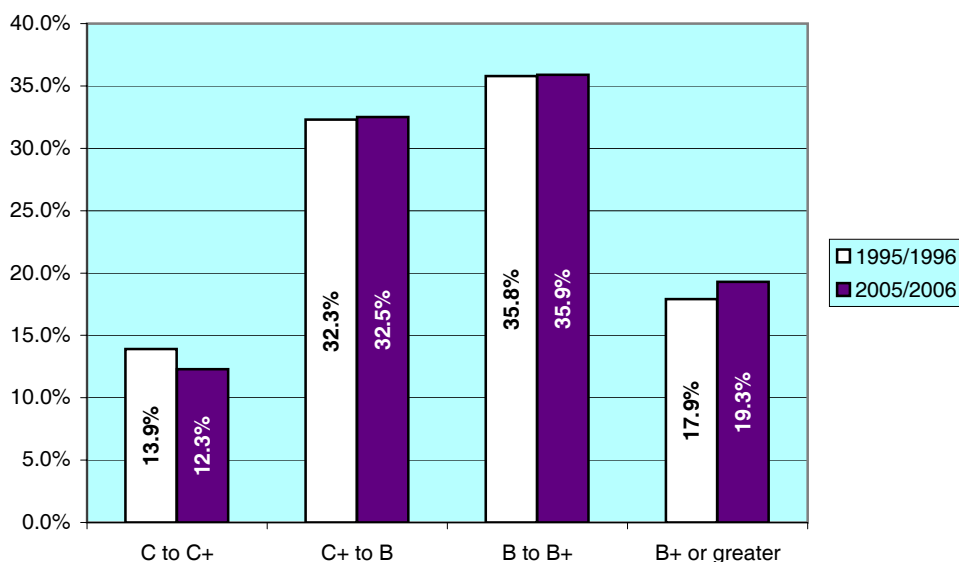
Undergraduate Degrees	1995/1996	2001/2002	2002/2003	2003/2004	2004/2005	2005/2006
• Time-to-Degree						
Average Elapsed Time in Years	2.9 yrs.	2.8 yrs.	2.7 yrs.	2.7 yrs.	2.7 yrs.	2.6 yrs.
Average Elapsed Time in Quarters	8.6 qtrs.	8.4 qtrs.	8.2 qtrs.	8.2 qtrs.	8.0 qtrs.	7.9 qtrs.
• GPA at Graduation						
GPA \geq 3.5 (B+ or greater)	17.9%	14.7%	17.1%	19.6%	16.8%	19.3%
3.00 \leq GPA < 3.5 (B to B+)	35.8%	39.7%	36.5%	36.6%	38.6%	35.9%
2.50 \leq GPA < 3.00 (C+ to B)	32.3%	32.2%	34.5%	30.6%	31.2%	32.5%
2.0 \leq GPA < 2.50 (C to C+)	13.9%	13.4%	12.0%	13.1%	13.2%	12.3%
GPA < 2.0	0.1%	0.0%	0.0%	0.0%	0.0%	0.0%

* Time-to-degree is reported in elapsed quarters from first enrollment date to graduation. Only the records of students who enter UCSD in the Fall Quarter are included in time-to-degree calculations. An academic year is defined as three quarters; twelve quarters equal four years. Summer degrees are combined with Fall degrees, and combined, represent one quarter.

Community College transfer students complete their degree requirements at UCSD in under nine quarters or three years. The average GPA earned by the 2005/2006 graduating class for courses taken at UCSD was 3.06.

Figure 23.

Grade Distribution: Degree Recipients Fall Quarter





**Appendix:
Undergraduate
Major Fields
of Study /
Academic
Departments**

■ Undergraduate Major Fields of Study/Academic Departments

ARTS

Music Department

MU01	Pre-Interdisciplinary Computing and the Arts
MU25	Music
MU26	Music Humanities
MU27	Interdisciplinary Computing and the Arts

Theatre & Dance Department

TH26	Theatre
TH27	Dance

Visual Arts Department

VA01	Pre-Interdisciplinary Computing and the Arts
VA02	Pre-Visual Arts, Media Computing Emphasis
VA26	Visual Arts (Art History/Criticism)
VA27	Visual Arts (Media)
VA28	Visual Arts (Studio)
VA29	Interdisciplinary Computing and the Arts

HUMANITIES

Classical Studies

CL25	Classical Studies
------	-------------------

History Department

HI25	History
------	---------

Literature Department

LT01	Pre-Literature/Writing
LT29	French Literature
LT31	German Literature
LT32	Russian Literature
LT33	Spanish Literature
LT34	Literature/Writing
LT35	Italian Literature
LT36	Literatures in English
LT37	Literature/Composite Major
LT38	Literatures of the World

Philosophy Department

PL25	Philosophy
------	------------

SCHOOL OF ENGINEERING

Bioengineering Department

BE01	Pre-Bioengineering
BE02	Pre-Bioengineering: Pre-Medical
BE03	Pre-Bioengineering (Biotechnology)
BE04	Pre-Bioengineering: Bioinformatics
BE25	Bioengineering
BE26	Bioengineering: Pre-Medical
BE27	Bioengineering: Biotechnology
BE28	Bioengineering: Bioinformatics

Chemical Engineering

CE25	Chemical Engineering
------	----------------------

Computer Science and Engineering Department

CS03	Pre-Computer Science with Specialization in Bioinformatics
CS25	Computer Engineering
CS26	Computer Science
CS27	Computer Science with Specialization in Bioinformatics

Electrical and Computer Engineering Department

EC03	Pre-Electrical Engineering
EC04	Pre-Engineering Physics
EC26	Computer Engineering
EC27	Electrical Engineering
EC28	Engineering Physics

Mechanical and Aerospace Engineering Department

MC25	Aerospace Engineering
MC27	Mechanical Engineering
MC28	Engineering Science
MC29	Environmental Engineering

Structural Engineering

SE25	Aerospace Engineering
SE26	Engineering Sciences
SE27	Structural Engineering

SOCIAL SCIENCE

SOCIAL SCIENCE - continued

Anthropology Department

- AN25 Anthropology
- AN26 Anthropology (Concentration in Biological Anthropology)
- AN27 Anthropology (Concentration in Archaeology)

Chinese Studies

- CN25 Chinese Studies

Cognitive Science Department

- CG25 Cognitive Science
- CG26 Cognitive Science with specialization in Clinical Applications
- CG27 Cognitive Science with Specialization in Computation
- CG28 Cognitive Science with Specialization in Human Cognition
- CG29 Cognitive Science with Specialization in Neuroscience
- CG30 Cognitive Science with Specialization in Human Computer Interaction
- CG31 Cognitive Science with Clinical Aspects in Cognition

Communication Department

- CM26 Communication

Critical Gender Studies

- CR25 Critical Gender Studies

Economics Department

- EN25 Economics
- EN26 Management Science
- EN28 Joint Major in Mathematics & Economics

Ethnic Studies Department

- ET25 Ethnic Studies

German Studies

- GS25 German Studies

Human Development Program

- HD01 Pre-Human Development
- HD25 Human Development

International Studies

- IS25 International Studies - Anthropology
- IS26 International Studies - Economics
- IS27 International Studies - History
- IS28 International Studies - Linguistics
- IS29 International Studies - Literature
- IS30 International Studies - Political Science
- IS31 International Studies - Sociology

Italian Studies

- IT25 Italian Studies

Japanese Studies

- JA25 Japanese Studies

Judaic Studies

- JU25 Judaic Studies

Latin American Studies

- LA25 Latin American Studies

Linguistics Department

- LN25 Linguistics
- LN29 Linguistics (Specialization in Language and Society)
- LN32 Linguistics (Specialization in Cognition & Language)
- LN33 Language Studies

Political Science Department

- PS25 Political Science
- PS26 Political Science-American Politics
- PS27 Political Science-Comparative Politics
- PS28 Political Science-International Relations
- PS29 Political Science-Political Theory
- PS30 Political Science-Public Law
- PS31 Political Science-Public Policy

Psychology Department

- PC26 Psychology — BA degree
- PC26 Psychology — BS degree

Program for the Study of Religion

- RE26 Study of Religion

Russian and Soviet Studies

- RU25 Russian and Soviet Studies

Sociology Department

- SO25 Sociology

Third World Studies

- TW25 Third World Studies

Urban Studies and Planning Program

- US26 Urban Studies and Planning

SCIENCE AND MATH

SPECIAL AND UNDECLARED

Chemistry and Biochemistry Department

CH01	Pre-Bioinformatics
CH25	Chemistry
CH28	Chemistry with Specialization in Earth Sciences
CH31	Biochemistry/Chemistry
CH32	Chemical Physics
CH33	Chemical Education
CH34	Environmental Chemistry
CH35	Pharmacological Chemistry
CH36	Molecular Synthesis
CH37	Bioinformatics

Earth Sciences Program

EA25	Earth Science — Geology
EA26	Earth Science — Geochemistry
EA27	Earth Science — Geophysics

Environmental Systems

ES25	Environmental Systems (Earth Sciences)
ES26	Environmental Systems (Ecology, Behavior, & Evolution)
ES27	Environmental Systems (Environmental Chemistry)
ES28	Environmental Systems (Environmental Policy)

Mathematics Department

MA01	Pre-Mathematics - Computer Science
MA27	Mathematics (Applied)
MA28	Applied Mathematics (Scientific Programming)
MA29	Mathematics
MA30	Mathematics-Computer Science
MA31	Mathematics/Applied Science
MA32	Mathematics/Secondary Education
MA33	Joint Major in Mathematics & Economics
MA34	Mathematics-Scientific Computation

Physics Department

PY26	Physics-Biophysics
PY28	Physics with Specialization in Earth Sciences
PY29	Physics
PY30	General Physics
PY31	General Physics, Secondary Education
PY32	Physics with Specialization in Materials Physics
PY33	Physics with Specialization in Computational Physics
PY34	Physics with Specialization in Astrophysics

BIOLOGY

Biology Department

BI01	Pre-Animal Physiology and Neuroscience
BI02	Pre-Biochemistry and Cell Biology
BI03	Pre-Ecology, Behavior, and Evolution
BI04	Pre-General Biology
BI05	Pre-Microbiology
BI06	Pre-Molecular Biology
BI07	Pre-Biology with Specialization in Bioinformatics
BI28	Animal Physiology and Neuroscience
BI29	Biochemistry and Cell Biology
BI30	Ecology, Behavior and Evolution
BI31	General Biology
BI32	Microbiology
BI33	Molecular Biology
BI34	Biology with Specialization in Bioinformatics
BI35	Human Biology
BI36	Physiology & Neuroscience

Individual Studies

IN25	John Muir College Special Project Major
IN26	Revelle College Individual Major
IN27	Eleanor Roosevelt College Individual Studies
IN28	Earl Warren College Individual Studies
IN29	Thurgood Marshall College Individual Studies

Undeclared

UNBS	Undeclared - Biological Sciences
UNHA	Undeclared - Humanities/Arts
UNPS	Undeclared - Physical Sciences
UNSS	Undeclared - Social Sciences
UN27	Undeclared

Limited Status

Special-Employee



The Student Digest is an annual publication of the
Office of Student Research & Information,
Student Affairs, 858-534-2382.

This document is also available on the
World Wide Web at:

studentresearch.ucsd.edu