



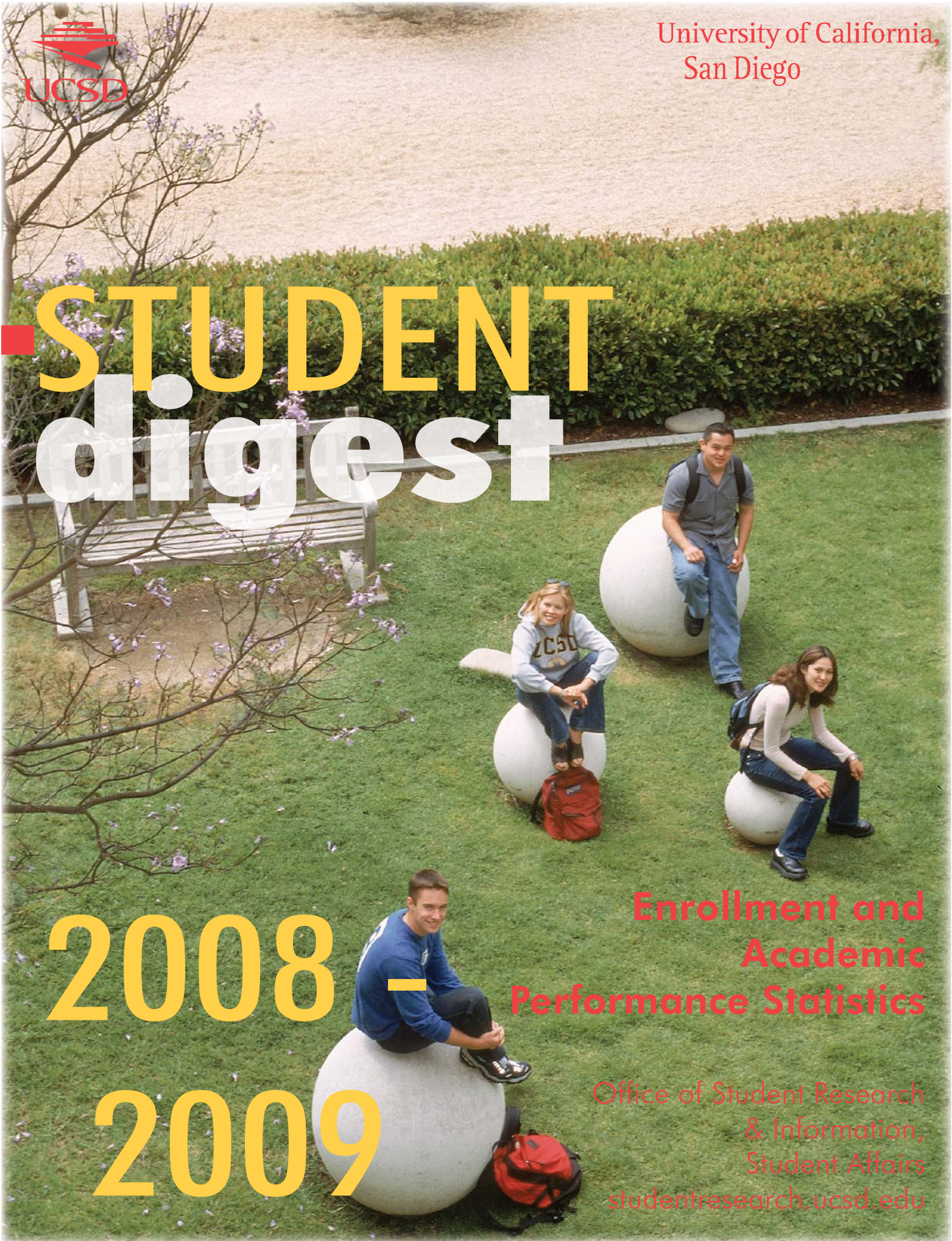
University of California,
San Diego

STUDENT digest

2008 –
2009

Enrollment and
Academic
Performance Statistics

Office of Student Research
& Information,
Student Affairs
studentresearch.ucsd.edu



■ INTRODUCTION

□ The *Student Digest*, published annually by the Office of Student Research and Information, provides the campus community with a broad overview of trends in undergraduate enrollments, academic performance and graduation statistics. If you have questions or comments regarding this publication, please contact the Office of Student Research and Information/Student Affairs at (858) 534-2382. If you wish to view this report and other statistical reports, they can be found on the World Wide Web at <http://studentresearch.ucsd.edu>.

STUDENT DIGEST

Enrollment and Academic Performance Statistics

Fall 2008

University of California, San Diego

William B. Armstrong, Ph.D.
Director

Heidi M. Carty, Ph.D.
Principal Research Analyst

Greg Martin
Programmer Analyst

Jason R. Thornton
Research Analyst

Student Research & Information
Student Affairs
University of California, San Diego
La Jolla, CA 92093-0088
<http://studentresearch.ucsd.edu>

■ Table of Contents

Total Campus Enrollment	4
Total Campus Population Summary	5
Total Undergraduate Enrollment	6
By Class Level	7
By Gender	8
By Ethnicity	9
By Major Field of Study	10
By Major Department	11
By College	12
Academic Profile: Undergraduates	13
Total Undergraduate Population Summary	14
By Class Level	15
By Major Field of Study	16
New Students	17
New Student Enrollments	18
First-Time Freshmen	19
Applicants, Admits & Registered	20
By Gender	21
By Ethnicity	22
By Major Field of Study	23
By Major Department at Time of Admission	24
By College & Home Location	25
By 1st Generation College Status & Income Group & Athletic Status	26
Major Feeder High Schools	27
High School Grades and SAT Scores	28
Indicators of Academic Preparation	29
High School GPA by Gender, Ethnicity, Major Field of Study, Home Location, 1st Generation College Status & Income Group	30
SAT I Scores by Gender, Ethnicity, Major Field of Study, Home Location, 1st Generation College Status & Income Group	31
UCSD/UC Systemwide Comparison	32
New Transfer Students	33
Applicants, Admits & Registered	34
By Gender	35
By Ethnicity	36
By Major Field of Study	37
By Transfer Institution & Home Location	38
By Undergraduate College	39
By 1st Generation College Status & Income Group & Athletic Status	40
Major Feeder Transfer Institutions	41
New Transfer Student Academic Preparation	42
Indicators of Academic Preparation	43
Degrees Conferred	44
All Degree Types	45
Bachelor Degrees by Gender	46
Bachelor Degrees by Ethnicity	47
Bachelor Degrees by Major Field of Study & College	48
Bachelor Degrees by First Generation College Status & Income	49
Time-to-Degree/Academic Performance for Students Who Entered UCSD from High School	50
Time-to-Degree/Academic Performance for Students Who Entered UCSD from a Two-Year Community College	51
Appendix: Undergraduate Major Fields of Study/ Academic Departments	52



**Total
Campus
Enrollment**

■ TOTAL CAMPUS ENROLLMENT

Over twenty-eight thousand students enrolled at UCSD in fall 2008 - showing an increase of 46% over the past decade. UCSD enrolled 22,518 undergraduate students, and 5,682 graduate and medical students.

Table 1.

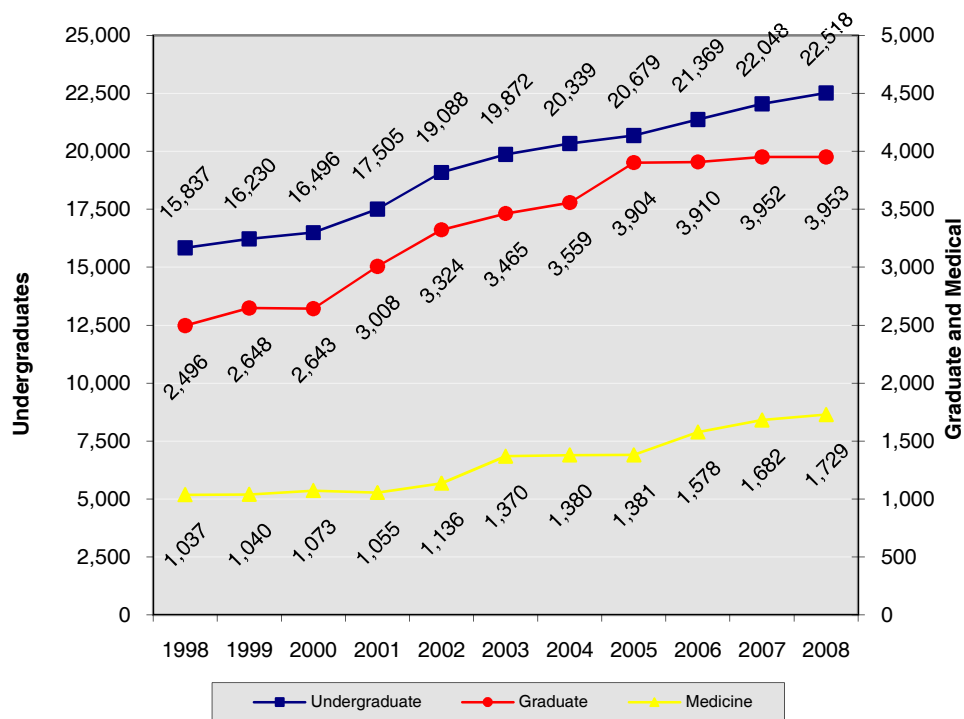
Total Campus Enrollment: The Past Decade Fall Quarter

UCSD Enrollment	1998	2003	2004	2005	2006	2007	2008	10 Year Δ
• Undergraduate	15,837	19,872	20,339	20,679	21,369	22,048	22,518	+42%
• Graduate *	2,496	3,465	3,559	3,904	3,910	3,952	3,953	+58%
• Medicine/Pharmacy	1,037	1,370	1,380	1,381	1,578	1,682	1,729	+67%
Total Campus Enrollment	19,370	24,707	25,278	25,964	26,857	27,682	28,200	+46%

* includes Teacher Education Program.

Figure 1.

Total Campus Enrollment: The Past Decade Fall Quarter





**Total
Undergraduate
Enrollment**

■ Undergraduate Enrollment

Undergraduate enrollments have increased by 42% over the past decade. The majority of undergraduate students (64%) at UCSD are upper division.

Table 2.

Undergraduate Enrollment by Class Level Fall Quarter

The Undergraduates	1998	2003	2004	2005	2006	2007	2008	10 Year Δ
• Lower Division	6,809 43%	7,847 39%	7,581 37%	7,551 37%	8,175 38%	8,572 39%	7,995 36%	+17%
Freshman	3,770 24%	3,973 20%	3,954 19%	3,917 19%	4,535 21%	4,179 19%	4,084 18%	+8%
Sophomore	3,039 19%	3,874 19%	3,627 18%	3,634 18%	3,640 17%	4,393 20%	3,911 17%	+29%
• Upper Division	9,028 57%	12,025 61%	12,758 63%	13,128 63%	13,194 62%	13,476 61%	14,523 64%	+61%
Junior	3,875 24%	5,523 28%	5,560 27%	5,733 28%	5,659 26%	5,827 26%	6,570 29%	+70%
Senior	5,153 33%	6,502 33%	7,198 35%	7,395 36%	7,535 35%	7,649 35%	7,953 35%	+54%
Total UG Enrollment	15,837	19,872	20,339	20,679	21,369	22,048	22,518	+42%

Figure 2.

Total Undergraduate Enrollment Trends by Class Level Fall Quarter

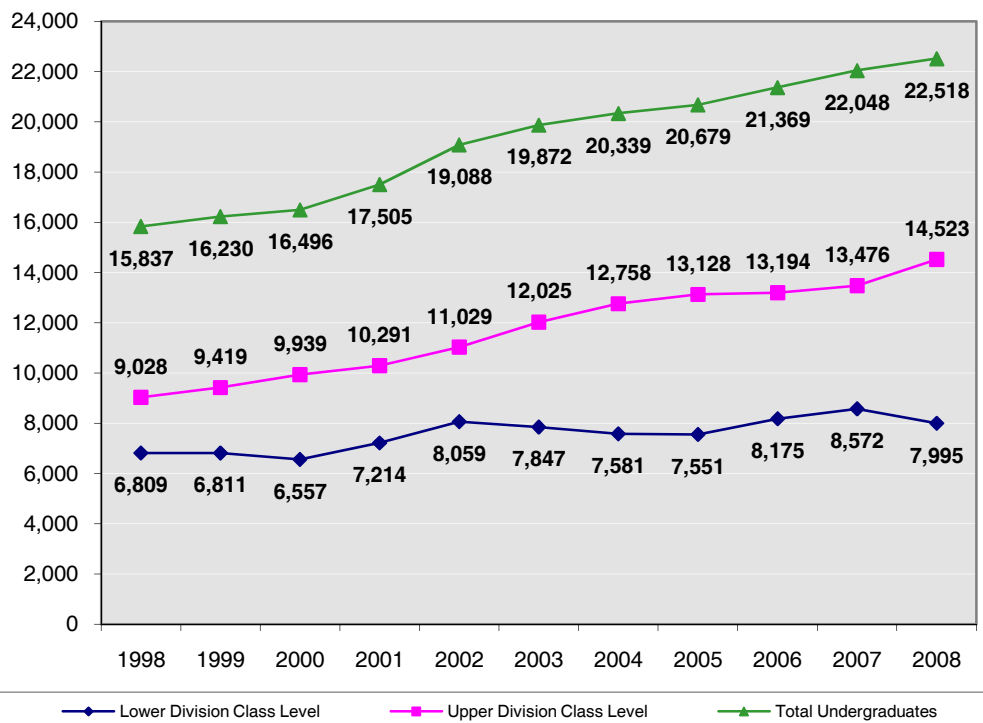


Table 3.

Undergraduates by Gender Fall Quarter

Gender	1998	2003	2004	2005	2006	2007	2008	10 Year Δ
• Female	8,154 51%	10,359 52%	10,606 52%	10,835 52%	11,164 52%	11,587 53%	11,743 52%	+44%
• Male	7,683 49%	9,513 48%	9,733 48%	9,844 48%	10,205 48%	10,461 47%	10,775 48%	+40%
Total UG Enrollment	15,837	19,872	20,339	20,679	21,369	22,048	22,518	+42%

Women outnumber men by approximately four percent, up one percent from ten years ago.

Figure 3.

Undergraduate Enrollment by Gender Fall Quarter

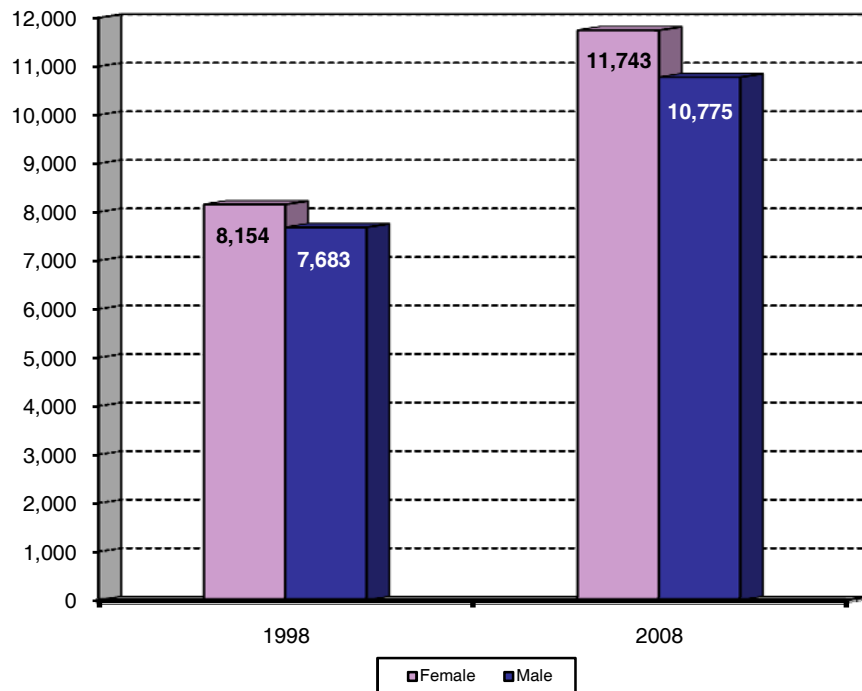


Table 4.

Undergraduates by Ethnicity Fall Quarter

Ethnicity	1988	2003	2004	2005	2006	2007	2008	10 Year Δ
• African-American	277 2%	244 1%	273 1%	282 1%	276 1%	326 1%	340 2%	+23%
• Asian	4,632 29%	6,851 34%	7,221 36%	7,580 37%	8,287 39%	9,072 41%	9,835 44%	+112%
• Mexican-American	1,216 8%	1,584 8%	1,655 8%	1,720 8%	1,844 9%	1,997 9%	2,159 10%	+78%
• Filipino	874 6%	979 5%	1,017 5%	1,051 5%	1,058 5%	1,065 5%	1,052 5%	+20%
• Latino	339 2%	470 2%	481 2%	520 3%	567 3%	621 3%	626 3%	+85%
• Native-American	134 1%	84 0%	85 0%	89 0%	99 0%	91 0%	90 0%	-33%
• Caucasian	6,323 40%	7,048 35%	6,855 34%	6,625 32%	6,557 31%	6,274 28%	6,028 27%	-5%
• Other/Undeclared	2,042 13%	2,612 13%	2,752 14%	2,812 14%	2,681 13%	2,602 12%	2,388 11%	+17%
Total UG Enrollment	15,837	19,872	20,339	20,679	21,369	22,048	22,518	+42%

The proportion of Asian and Mexican-American students continues to rise while the proportion of African-American, Latino, Filipino, and Native American students stays approximately the same over the past six years.

Figure 4.

Undergraduate Enrollment by Ethnicity Fall Quarter

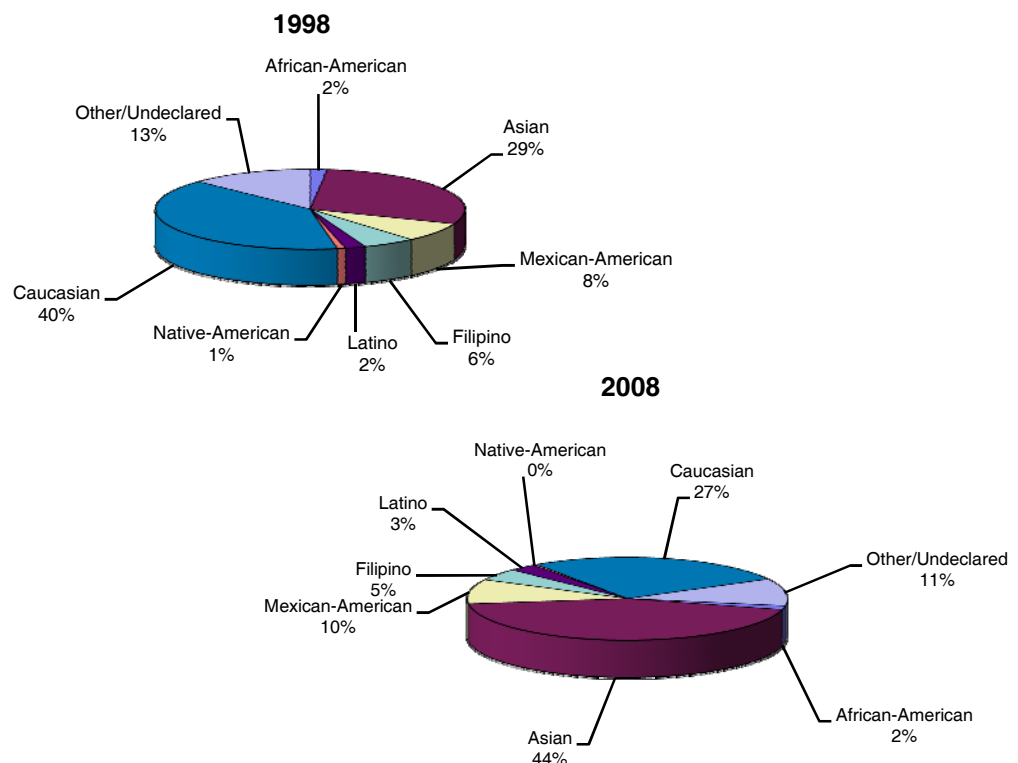


Table 5.

Undergraduates by Major Field of Study Fall Quarter

Major Field of Study	1998	2003	2004	2005	2006	2007	2008	10 Year Δ
• Arts	565 4%	1,070 5%	945 5%	889 4%	826 4%	773 4%	808 4%	+43%
• Humanities	822 5%	875 4%	905 4%	902 4%	936 4%	922 4%	858 4%	+4%
• Engineering	2,981 19%	4,331 22%	4,273 21%	4,035 20%	3,820 18%	3,717 17%	3,861 17%	+30%
• Science/Math	1,083 7%	1,438 7%	1,576 8%	1,713 8%	1,935 9%	2,041 9%	1,873 8%	+73%
• Biology	3,780 24%	3,055 15%	3,368 17%	3,809 18%	4,273 20%	4,776 22%	5,294 24%	+40%
• Social Science	4,567 29%	6,515 33%	6,928 34%	7,372 36%	7,610 36%	7,856 36%	8,395 37%	+84%
• Undec./Special	2,039 13%	2,588 13%	2,344 12%	1,959 9%	1,969 9%	1,963 9%	1,429 6%	-30%
Total UG Enrollment	15,837	19,872	20,339	20,679	21,369	22,048	22,518	+42%

The social sciences continue to be the most popular undergraduate field of study at UCSD, followed by biology and then engineering.

Figure 5.

Undergraduate Enrollment by Major Field of Study Fall Quarter

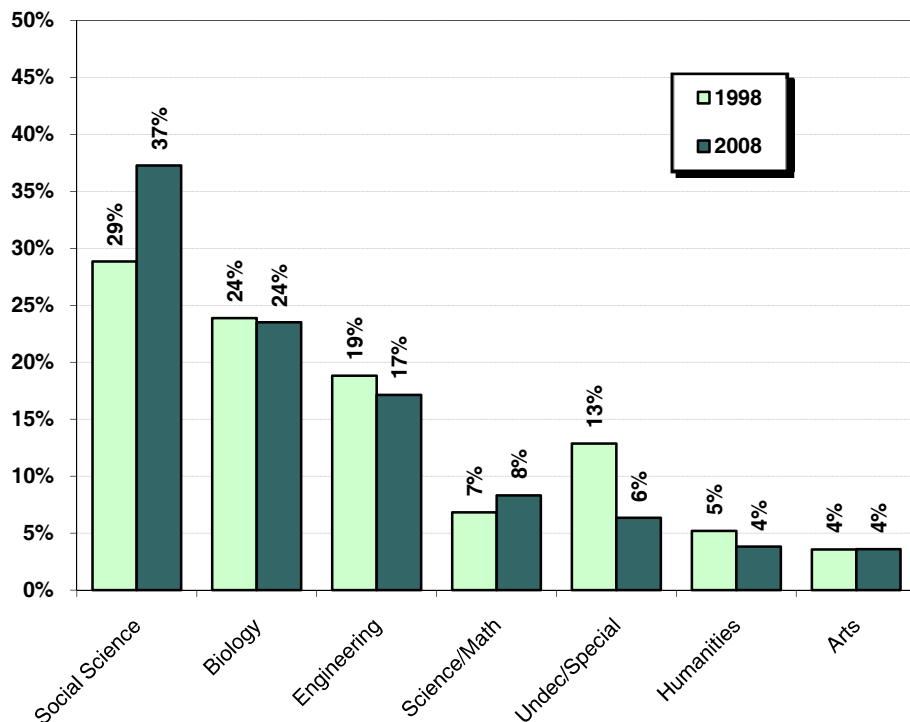


Table 6.

Undergraduates by Major Department **Fall Quarter**
Ten Most Populous Departments

1998			2008		
Major Department	n	%	Major Department	n	%
Biology	3,780	23.9%	Biology	5,294	23.5%
CSE	1,092	6.9%	Economics	2,444	10.9%
Economics	1,040	6.6%	Psychology	1,395	6.2%
Psychology	939	5.9%	Political Science	1,179	5.2%
Political Science	706	4.5%	Mechanical & Aerospace Eng.	1,114	4.9%
ECE	662	4.2%	Chemistry	1,079	4.8%
Communications	657	4.1%	International Studies	888	3.9%
AMES	636	4.0%	Bioengineering	851	3.8%
Bioengineering	591	3.7%	Communications	849	3.8%
Chemistry & Biochemistry	564	3.6%	Computer Science & Eng. (CSE)	636	2.8%
Other Departments	3,134	19.8%	Other Departments	5,363	23.8%
Undeclared Majors	2,036	12.9%	Undeclared Majors	1,426	6.3%
TOTAL	15,837	100.0%	TOTAL	22,518	100.0%

Similar to 1998, the most popular undergraduate major at UCSD in 2008 is biology. Economics has become the second most popular undergraduate major, followed by psychology.

Figure 6.

Ten Most Populous Departments **Fall Quarter**

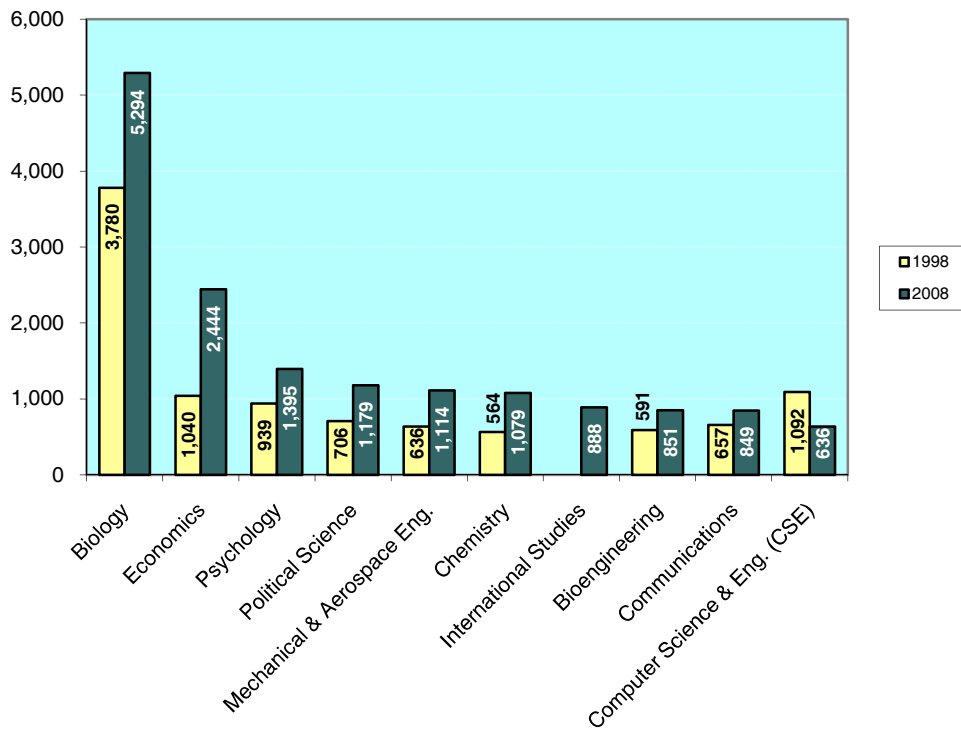


Table 7.

Undergraduates by College Fall Quarter

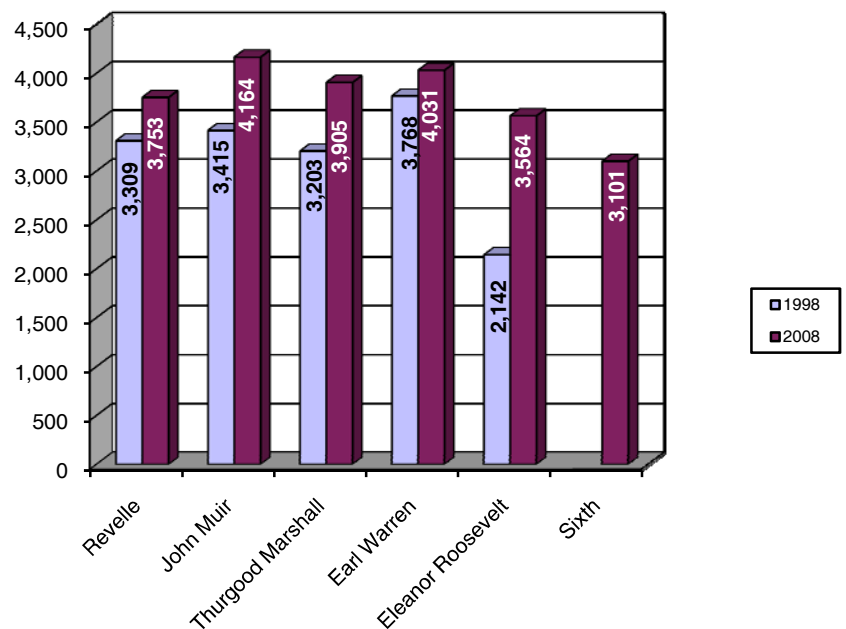
College	1998	2003	2004	2005	2006	2007	2008	10 Year Δ
• Revelle	3,309 21%	3,697 19%	3,647 18%	3,690 18%	3,627 17%	3,792 17%	3,753 17%	+13%
• John Muir	3,415 22%	3,866 20%	3,797 19%	3,861 19%	4,088 19%	4,194 19%	4,164 18%	+22%
• Thurgood Marshall	3,203 20%	3,856 20%	3,813 19%	3,736 18%	3,769 18%	3,725 17%	3,905 17%	+22%
• Earl Warren	3,768 24%	4,559 24%	4,565 22%	4,331 21%	4,151 19%	4,132 19%	4,031 18%	+7%
• Eleanor Roosevelt	2,142 13%	3,232 17%	3,370 17%	3,337 16%	3,376 16%	3,422 16%	3,564 16%	+66%
• Sixth*	NA NA	662 (3%)	1,147 6%	1,724 8%	2,358 11%	2,783 13%	3,101 14%	NA
Total UG Enrollment	15,837	19,872	20,339	20,679	21,369	22,048	22,518	

* Note: Sixth College enrolled its first class of undergraduates in 2002.

Currently, Earl Warren and John Muir enroll the largest number of undergraduate students, followed closely behind by Thurgood Marshall and Revelle colleges.

Figure 7.

Undergraduate Enrollments by College Fall Quarter





**Academic
Profile:
Undergraduates**

■ Academic Profile: Total Undergraduate Population

Table 8.

Academic Profile Summary Fall Quarter

Undergraduates	1998	2003	2004	2005	2006	2007	2008
• UCSD GPA	2.98	3.02	3.03	3.02	3.01	3.01	3.02
GPA \geq 3.5	16.4%	19.0%	19.0%	18.6%	18.3%	18.1%	18.8%
3.0 \leq GPA < 3.5	34.2%	35.4%	36.8%	36.3%	35.0%	35.5%	35.2%
2.5 \leq GPA < 3.0	31.8%	30.0%	29.2%	29.7%	30.2%	30.2%	30.1%
2.0 \leq GPA < 2.5	14.7%	12.9%	12.7%	12.8%	13.8%	13.6%	13.4%
GPA < 2.0	2.9%	2.7%	2.4%	2.6%	2.7%	2.5%	2.5%

The mean grade point average (GPA) for all undergraduates at UCSD in 2008 is 3.02 (B); approximately 19% earn a GPA of 3.50 (B+) or higher.

Figure 8.

Proportion of Student Body within GPA Ranges Fall Quarter

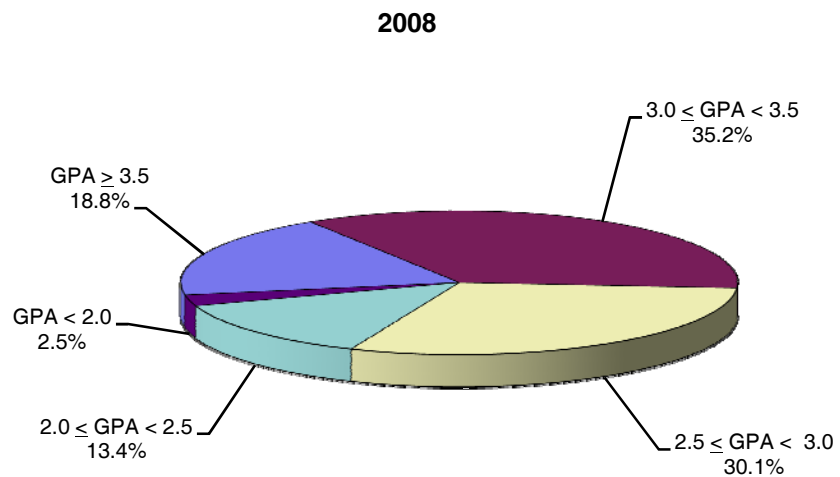


Table 9.

Academic Profile by Class Level **Fall Quarter**

Undergraduates	1998	2003	2004	2005	2006	2007	2008
• Freshman*							
Freshman GPA	2.92	2.92	2.88	2.90	2.89	2.92	2.87
GPA \geq 3.5	20.8%	22.1%	20.6%	20.0%	19.5%	20.3%	19.0%
3.0 \leq GPA < 3.5	32.7%	31.9%	30.7%	31.7%	32.0%	32.2%	31.2%
2.5 \leq GPA < 3.0	23.0%	23.3%	23.9%	25.2%	23.8%	25.7%	24.0%
2.0 \leq GPA < 2.5	15.3%	13.7%	14.1%	15.0%	16.2%	13.8%	15.6%
GPA < 2.0	8.2%	9.0%	10.6%	8.1%	8.6%	8.1%	10.3%
• Sophomore							
Sophomore GPA	2.95	3.00	2.99	2.98	2.97	3.00	3.00
GPA \geq 3.5	14.7%	17.4%	15.7%	15.7%	15.1%	16.6%	16.4%
3.0 \leq GPA < 3.5	33.1%	36.0%	36.2%	35.3%	36.2%	35.2%	34.8%
2.5 \leq GPA < 3.0	33.7%	29.8%	31.2%	31.9%	30.5%	32.0%	32.5%
2.0 \leq GPA < 2.5	15.3%	14.2%	14.3%	14.2%	15.6%	14.2%	14.4%
GPA < 2.0	3.2%	2.6%	2.7%	2.9%	2.7%	1.9%	1.9%
• Junior							
Junior GPA	3.01	3.04	3.05	3.01	3.00	3.00	3.02
GPA \geq 3.5	17.2%	19.2%	19.8%	17.6%	18.1%	18.3%	19.7%
3.0 \leq GPA < 3.5	35.7%	37.3%	37.7%	36.6%	34.4%	35.8%	34.8%
2.5 \leq GPA < 3.0	30.9%	29.9%	28.5%	30.4%	31.3%	28.9%	30.3%
2.0 \leq GPA < 2.5	13.5%	11.2%	12.0%	12.6%	12.6%	13.4%	12.2%
GPA < 2.0	2.8%	2.4%	2.0%	2.8%	3.6%	3.5%	2.9%
• Senior							
Senior GPA	3.02	3.05	3.07	3.08	3.05	3.05	3.05
GPA \geq 3.5	17.4%	20.5%	20.6%	21.4%	20.3%	19.7%	19.7%
3.0 \leq GPA < 3.5	35.9%	35.5%	37.9%	37.8%	35.9%	36.3%	36.6%
2.5 \leq GPA < 3.0	31.5%	30.0%	28.5%	28.2%	29.3%	29.9%	29.0%
2.0 \leq GPA < 2.5	13.4%	12.0%	11.6%	11.0%	12.9%	12.4%	12.8%
GPA < 2.0	1.8%	2.0%	1.5%	1.5%	1.6%	1.7%	1.9%
Undergraduate GPA	2.98	3.02	3.03	3.02	3.01	3.01	3.02

There is a positive relationship between student class level and grade point average; as students advance in standing, they tend to earn a higher grade point average.

* Note: Freshman GPA data reflect grades for Winter quarter of first year enrolled.

Table 10.

Academic Profile by Major Field of Study **Fall Quarter**

Undergraduates	1998	2003	2004	2005	2006	2007	2008
• Arts							
Arts GPA	3.08	3.17	3.19	3.20	3.22	3.19	3.22
GPA ≥ 3.5	18.7%	25.2%	24.5%	25.6%	28.0%	28.6%	30.0%
$3.0 \leq$ GPA < 3.5	43.2%	42.0%	45.8%	46.9%	45.0%	39.8%	41.7%
$2.5 \leq$ GPA < 3.0	26.3%	24.4%	23.1%	21.4%	21.4%	23.4%	22.3%
$2.0 \leq$ GPA < 2.5	10.5%	7.2%	6.0%	4.6%	4.3%	7.5%	5.3%
GPA < 2.0	1.4%	1.2%	0.6%	1.5%	1.4%	0.6%	0.6%
• Humanities							
Humanities GPA	3.14	3.15	3.15	3.12	3.09	3.13	3.14
GPA ≥ 3.5	25.0%	23.6%	26.0%	24.0%	21.5%	25.3%	27.3%
$3.0 \leq$ GPA < 3.5	40.3%	43.1%	41.5%	40.0%	40.6%	40.4%	39.6%
$2.5 \leq$ GPA < 3.0	22.7%	24.7%	22.9%	24.7%	24.6%	22.3%	22.1%
$2.0 \leq$ GPA < 2.5	10.2%	7.9%	7.6%	10.0%	10.5%	9.4%	9.6%
GPA < 2.0	1.8%	0.7%	2.1%	1.2%	2.8%	2.6%	1.5%
• Engineering							
Engineering GPA	2.97	2.99	3.00	3.00	3.00	3.00	3.00
GPA ≥ 3.5	15.7%	18.0%	18.2%	18.7%	18.0%	18.0%	18.8%
$3.0 \leq$ GPA < 3.5	32.5%	31.8%	32.3%	32.5%	33.1%	32.8%	32.7%
$2.5 \leq$ GPA < 3.0	34.3%	34.0%	32.8%	31.7%	31.6%	31.5%	31.9%
$2.0 \leq$ GPA < 2.5	14.8%	13.7%	14.5%	14.9%	14.8%	15.3%	14.3%
GPA < 2.0	2.7%	2.5%	2.1%	2.2%	2.5%	2.4%	2.4%
• Science/Math							
Science/Math GPA	2.95	2.93	2.96	2.91	2.94	2.95	2.98
GPA ≥ 3.5	19.1%	18.5%	17.6%	15.9%	15.9%	16.6%	17.3%
$3.0 \leq$ GPA < 3.5	28.6%	29.9%	33.5%	31.3%	31.9%	32.9%	33.0%
$2.5 \leq$ GPA < 3.0	30.1%	27.6%	27.5%	31.8%	30.1%	31.0%	30.9%
$2.0 \leq$ GPA < 2.5	18.5%	20.5%	18.8%	15.7%	18.8%	16.5%	16.1%
GPA < 2.0	3.6%	3.5%	2.6%	5.3%	3.3%	2.9%	2.7%
• Biology							
Biology GPA	2.99	3.04	3.05	3.06	3.05	3.04	3.04
GPA ≥ 3.5	18.3%	20.9%	20.5%	20.5%	20.0%	18.7%	18.5%
$3.0 \leq$ GPA < 3.5	31.6%	34.3%	35.6%	35.5%	34.4%	35.9%	36.1%
$2.5 \leq$ GPA < 3.0	32.9%	30.7%	31.1%	30.9%	33.2%	32.7%	31.8%
$2.0 \leq$ GPA < 2.5	14.5%	11.9%	11.1%	11.0%	10.8%	10.7%	11.9%
GPA < 2.0	2.8%	2.1%	1.7%	2.1%	1.6%	2.0%	1.7%
• Social Science							
Social Science GPA	2.97	3.01	3.03	3.02	2.99	3.00	2.99
GPA ≥ 3.5	13.4%	17.8%	18.0%	17.6%	16.7%	17.0%	17.7%
$3.0 \leq$ GPA < 3.5	36.9%	37.1%	39.0%	38.3%	35.8%	36.3%	35.5%
$2.5 \leq$ GPA < 3.0	31.8%	29.3%	28.6%	28.9%	29.7%	29.2%	29.5%
$2.0 \leq$ GPA < 2.5	14.9%	12.5%	11.8%	12.7%	14.7%	14.7%	14.2%
GPA < 2.0	3.0%	3.2%	2.5%	2.5%	3.1%	2.8%	3.1%
Undergraduate GPA	2.98	3.02	3.03	3.02	3.01	3.01	3.02

Grade point averages vary by major field of study; the highest average GPAs are generally associated with arts and humanities majors.



**New
Students**

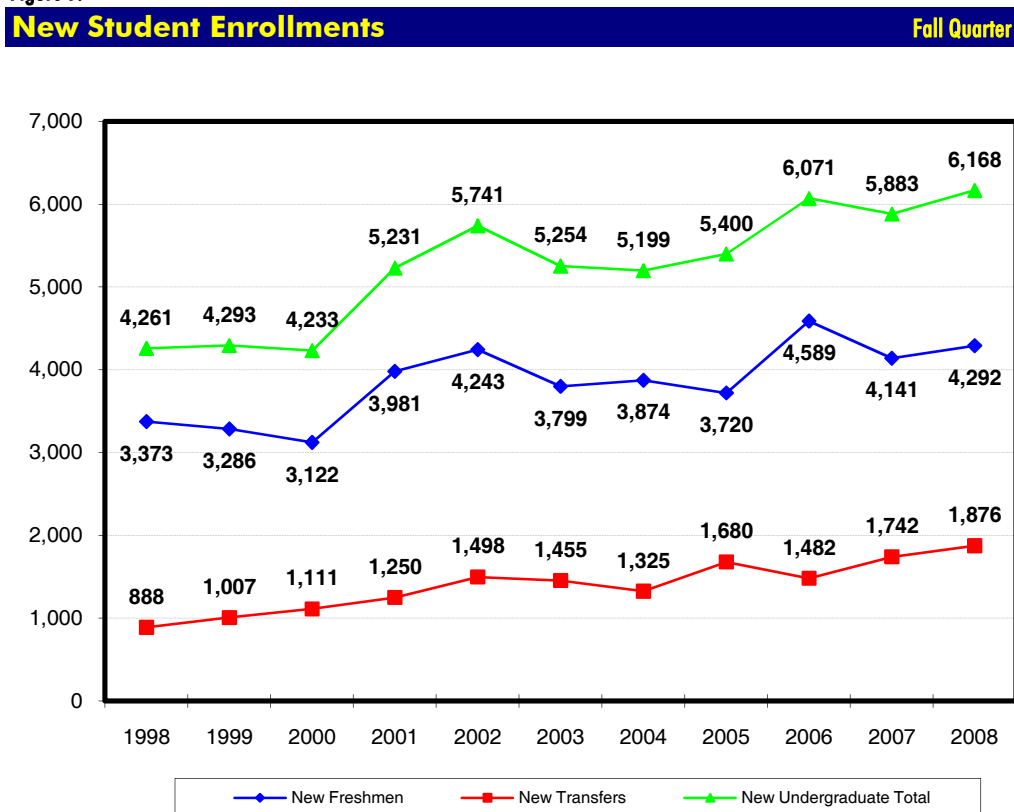
■ New Students: The Past Decade

New student enrollments have increased from 4,261 in 1998 to 6,168 in 2008, representing an overall increase of 45%. Of the new student enrollment, 70% are first-time freshmen and 30% are transfer students, representing the largest cohort of incoming transfer students to date.

Table 11.

New Student Enrollments								Fall Quarter
New Students	1998	2003	2004	2005	2006	2007	2008	10 Year Δ
• First-Time Freshmen	3,373 79%	3,799 72%	3,874 75%	3,720 69%	4,589 76%	4,141 70%	4,292 70%	+27%
• New Transfers	888 21%	1,455 28%	1,325 25%	1,680 31%	1,482 24%	1,742 30%	1,876 30%	+111%
New Student Total	4,261	5,254	5,199	5,400	6,071	5,883	6,168	+45%

Figure 9.





**First-Time
Freshmen**

■ First-Time Freshmen

Over forty-seven thousand high school students applied for admission to UCSD for fall of 2008. Of these students, 42% were admitted. A total of 4,292 of the admitted students registered for enrollment, showing a yield of 22%.

Table 12.

Applicants, Admits & Registered Fall Quarter

First-Time Freshmen	1998	2003	2004	2005	2006	2007	2008	10 Year Δ
• Applicants	28,091	43,438	41,330	40,518	43,586	45,073	47,365	+69%
• Admits	13,586	17,618	17,269	17,891	21,345	19,178	19,717	+45%
Admit/App. Rate	48%	41%	42%	44%	49%	43%	42%	
• Registered	3,373	3,799	3,874	3,720	4,589	4,141	4,292	+27%
Reg./Admit Rate	25%	22%	22%	21%	21%	22%	22%	

Figure 10.

Applicants, Admits & Registered Fall Quarter

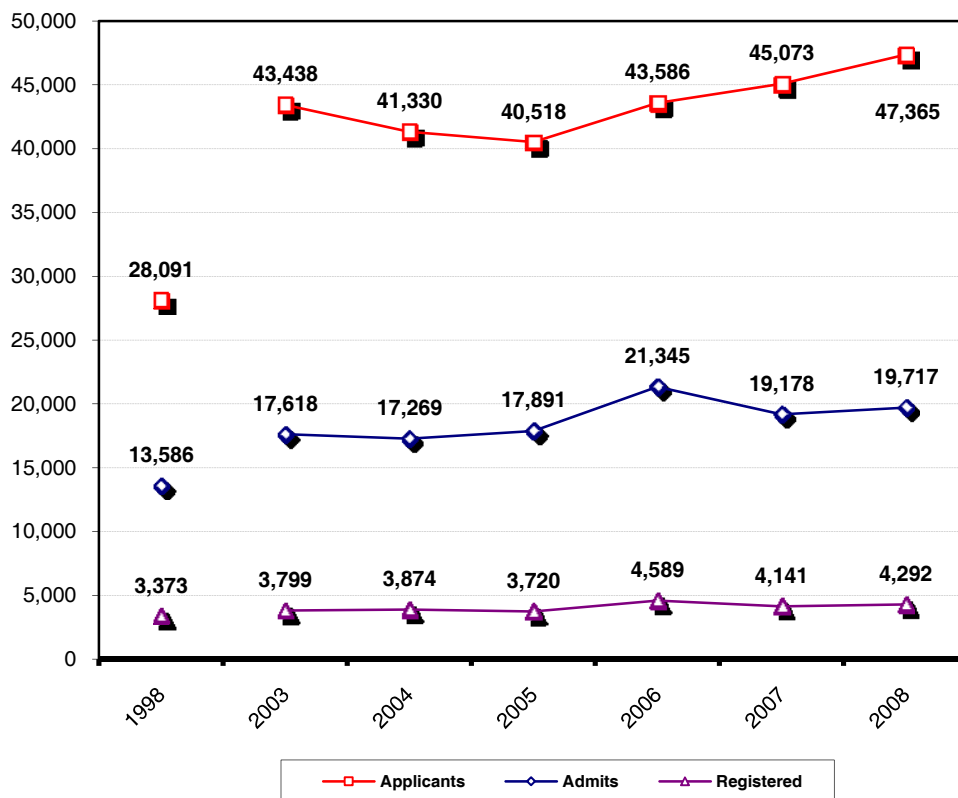


Table 13.

First-Time Freshmen by Gender Fall Quarter

Gender	1998	2003	2004	2005	2006	2007	2008	10 Year Δ
• Female	1,877 56%	2,130 56%	2,190 57%	2,113 57%	2,558 56%	2,303 56%	2,399 56%	+28%
• Male	1,496 44%	1,669 44%	1,684 43%	1,607 43%	2,031 44%	1,838 44%	1,893 44%	+27%
Total	3,373	3,799	3,874	3,720	4,589	4,141	4,292	+27%

At 56%, women continue to represent the majority of first-time freshmen at UCSD.

Figure 11.

First-Time Freshmen by Gender Fall Quarter

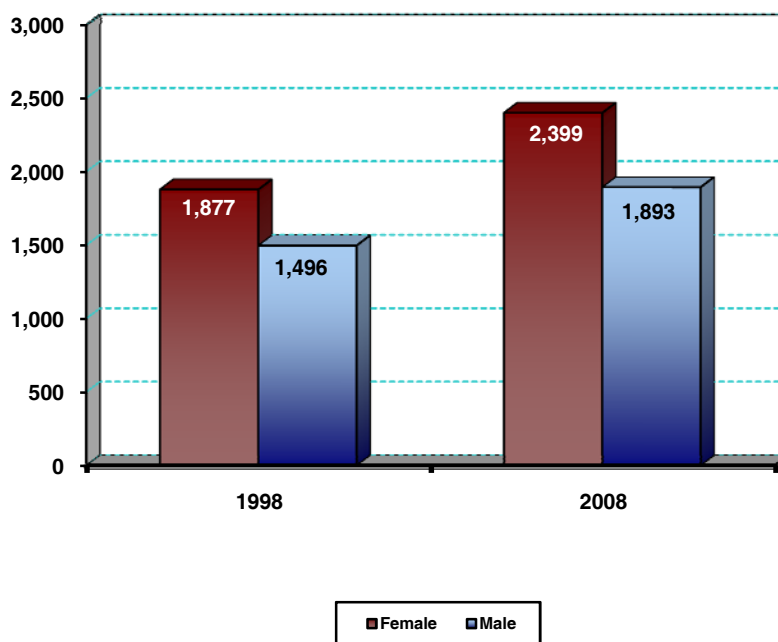


Table 14.

First-Time Freshmen by Ethnicity Fall Quarter

Ethnicity	1998	2003	2004	2005	2006	2007	2008	10 Year Δ
• African-American	52 2%	47 1%	57 1%	43 1%	44 1%	72 2%	52 1%	+0%
• Asian	963 29%	1,355 36%	1,519 39%	1,600 43%	2,080 45%	1,945 47%	2,106 49%	+119%
• Mexican-American	202 6%	322 8%	355 9%	321 9%	388 8%	431 10%	441 10%	+118%
• Filipino	181 5%	183 5%	216 6%	201 5%	221 5%	183 4%	180 4%	-1%
• Latino	74 2%	97 3%	91 2%	111 3%	122 3%	126 3%	105 2%	+42%
• Native-American	19 1%	14 0%	15 0%	18 0%	22 0%	9 0%	15 0%	-21%
• Caucasian	1,253 37%	1,315 35%	1,163 30%	1,083 29%	1,283 28%	989 24%	1,009 24%	-19%
• Other/Missing	629 19%	466 12%	458 12%	343 9%	429 9%	386 9%	384 9%	-39%
Total	3,373	3,799	3,874	3,720	4,589	4,141	4,292	+27%

Compared to the 1998 freshman cohort, the proportion of Asian students has increased by approximately 119%. At the same time, the proportion of Caucasian students has decreased by 19%. The majority (66%) of first-time freshmen at UCSD are students of color.

Figure 12.

First-Time Freshmen by Ethnicity Fall Quarter

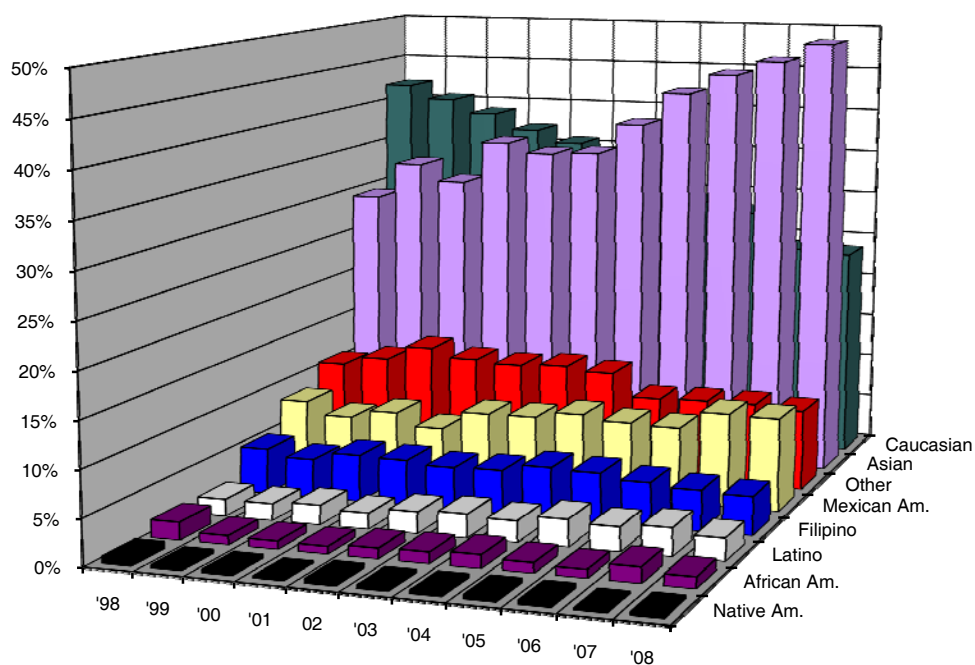


Table 15.

First-Time Freshmen by Major Field of Study Fall Quarter

Major Field of Study	1998	2003	2004	2005	2006	2007	2008	10 Year Δ
• Arts	89 3%	92 2%	81 2%	82 2%	105 2%	76 2%	99 2%	+11%
• Humanities	100 3%	98 3%	119 3%	84 2%	151 3%	116 3%	115 3%	+15%
• Engineering	595 18%	738 19%	778 20%	766 21%	872 19%	720 17%	879 20%	+48%
• Science/Math	249 7%	290 8%	342 9%	370 10%	465 10%	462 11%	393 9%	+58%
• Biology	612 18%	566 15%	634 16%	616 17%	807 18%	851 21%	926 22%	+51%
• Social Science	640 19%	619 16%	741 19%	791 21%	1,024 22%	900 22%	986 23%	+54%
• Undeclared/Missing/ Special	1,088 32%	1,396 37%	1,179 30%	1,011 27%	1,165 25%	1,016 25%	894 21%	-18%
Total	3,373	3,799	3,874	3,720	4,589	4,141	4,292	+27%

The most popular declared field of study for first-time freshmen is social science, followed closely by biology. Approximately, 21% of new freshmen are considered undeclared upon admission.

Figure 13.

First-Time Freshmen by Major Field of Study Fall Quarter

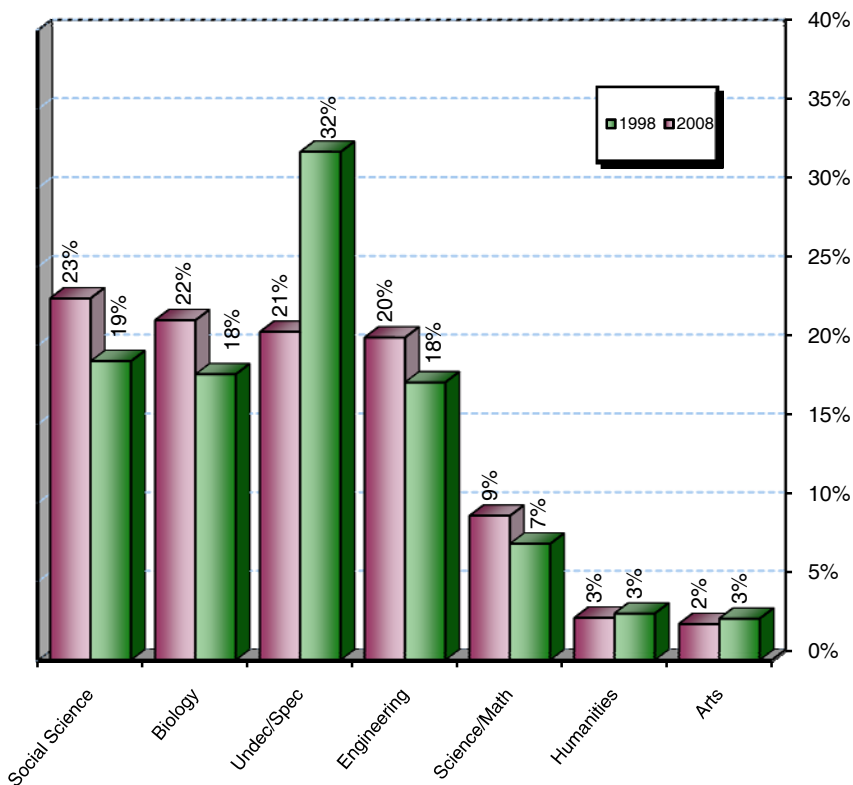


Table 16.

**First-Time Freshmen
by Major Department at Time of Admission** **Fall Quarter**

1998			2008		
Major Department	n	%	Major Department	n	%
Biology	612	18.1%	Biology	926	21.6%
Bioengineering	168	5.0%	Economics	283	6.6%
CSE	146	4.3%	Bioengineering	262	6.1%
ECE	144	4.3%	Chemistry	239	5.6%
Political Science	141	4.2%	Mechanical & Aerospace Eng.	232	5.4%
AMES	137	4.1%	Psychology	184	4.3%
Psychology	137	4.1%	Political Science	146	3.4%
Economics	133	3.9%	Computer Science & Eng. (CSE)	144	3.4%
Communications	110	3.3%	International Studies	127	3.0%
Chemistry & Biochemistry	92	2.7%	Electrical & Computer Eng. (ECE)	111	2.6%
Mathematics	88	2.6%	Communications	103	2.4%
Literature	63	1.9%	Structural Engineering	77	1.8%
Physics	60	1.8%	Mathematics	74	1.7%
Visual Arts	42	1.2%	Literature	68	1.6%
Theatre & Dance	30	0.9%	Visual Arts	66	1.5%
History	29	0.9%	Chemical Engineering	53	1.2%
Sociology	28	0.8%	Physics	42	1.0%
Human Development	25	0.7%	History	34	0.8%
Anthropology	20	0.6%	Environmental Systems	32	0.7%
Cognitive Science	20	0.6%	Cognitive Science	31	0.7%
Music	17	0.5%	Sociology	27	0.6%
Earth Sciences	9	0.3%	Anthropology	24	0.6%
Linguistics	7	0.2%	Linguistics	23	0.5%
Ethnic Studies	6	0.2%	Music	21	0.5%
Philosophy	5	0.1%	Theatre	12	0.3%
Subtotal	2,269	67.3%	Subtotal	3,341	77.8%
Other Majors	16	0.5%	Other Majors	57	1.3%
Undeclared Majors	1,088	32.3%	Undeclared Majors	894	20.8%
TOTAL	3,373	100.0%	TOTAL	4,292	100.0%

Similar to 1998, biology is the most popular declared major among new freshmen. Approximately 22% of all new freshmen report majoring in biology.

Table 17.

First-Time Freshmen by College								Fall Quarter
College	1998	2003	2004	2005	2006	2007	2008	10 Year Δ
• Revelle	703 21%	695 18%	701 18%	756 20%	736 16%	798 19%	701 16%	-0%
• John Muir	734 22%	655 17%	646 17%	640 17%	962 21%	644 16%	801 19%	+9%
• Thurgood Marshall	627 19%	724 19%	670 17%	667 18%	769 17%	703 17%	774 18%	+23%
• Earl Warren	699 21%	625 16%	658 17%	582 16%	691 15%	659 16%	615 14%	-12%
• Eleanor Roosevelt	610 18%	706 19%	743 19%	608 16%	723 16%	663 16%	801 19%	+31%
• Sixth	NA NA	394 10%	456 12%	467 13%	708 15%	674 16%	600 14%	NA
Total	3,373	3,799	3,874	3,720	4,589	4,141	4,292	+27%

Almost one-half (46%) of all first-time freshmen come to UCSD from the Los Angeles area. Almost one-quarter (24%) are from the San Francisco area. Approximately 92% are from California.

Table 18.

First-Time Freshmen by Home Location								Fall Quarter
Home Location	1998	2003	2004	2005	2006	2007	2008	10 Year Δ
• San Diego	802 24%	630 17%	628 16%	503 14%	591 13%	568 14%	554 13%	-31%
• Los Angeles	1,315 39%	1,694 45%	1,806 47%	1,736 47%	2,089 46%	1,902 46%	1,993 46%	+52%
• San Francisco	625 19%	785 21%	806 21%	820 22%	1,101 24%	950 23%	1,011 24%	+62%
• Other CA	464 14%	508 13%	439 11%	413 11%	477 10%	400 10%	384 9%	-17%
• Out-of-State	148 4%	149 4%	111 3%	156 4%	211 5%	169 4%	179 4%	+21%
• Foreign	19 1%	33 1%	84 2%	92 2%	120 3%	152 4%	171 4%	+800%
Total	3,373	3,799	3,874	3,720	4,589	4,141	4,292	+27%

Table 19.

First-Time Freshmen by 1st Generation College Status Fall Quarter

College Status	1998	2003	2004	2005	2006	2007	2008	10 Year Δ
• First Generation	623 18%	1,072 28%	1,118 29%	1,037 28%	1,262 28%	1,383 33%	1,369 32%	+120%
• Not First Generation	2,750 82%	2,727 72%	2,756 71%	2,683 72%	3,327 72%	2,758 67%	2,923 68%	+6%
Total	3,373	3,799	3,874	3,720	4,589	4,141	4,292	+27%

The majority (68%) of new freshmen have at least one parent who has graduated from a two-year junior college or four-year college/university.

Table 20.

First-Time Freshmen by Income Group Fall Quarter

Income	1998*	2003	2004	2005	2006	2007	2008	10 Year Δ
• High (≥\$98,401)	962 29%	938 25%	796 21%	887 24%	1,234 27%	943 23%	1,138 27%	+18%
• Medium High (\$65,601 - \$98,400)	583 17%	479 13%	443 11%	468 13%	566 12%	439 11%	442 10%	-24%
• Medium Low (\$32,801 - \$65,600)	610 18%	810 21%	826 21%	792 21%	985 21%	904 22%	891 21%	+46%
• Low (≤\$32,800)	560 17%	825 22%	931 24%	854 23%	994 22%	1,129 27%	1,096 26%	+96%
• Missing	658 20%	747 20%	878 23%	719 19%	810 18%	726 18%	725 17%	+10%
Total	3,373	3,799	3,874	3,720	4,589	4,141	4,292	+27%

* 1998 Income Categories:
 High = Income ≥ \$87,001
 Medium High = \$58,001-\$87,000
 Medium Low = \$29,001-\$58,000
 Low = Income ≤ \$29,000

Table 21.

First-Time Freshmen by Athletic Status Fall Quarter

College Status	1998	2003	2004	2005	2006	2007	2008*	10 Year Δ
• Athlete	NA NA	200 5%	162 4%	159 4%	166 4%	149 4%	NA NA	NA
• Non-Athlete	NA NA	3,599 95%	3,712 96%	3,561 96%	4,423 96%	3,992 96%	NA NA	NA
Total	3,373	3,799	3,874	3,720	4,141	4,141	4,292	+27%

* 2008 Athlete data not available until Winter Quarter 2009.

Approximately, 4% of first-time freshmen play UCSD athletics.

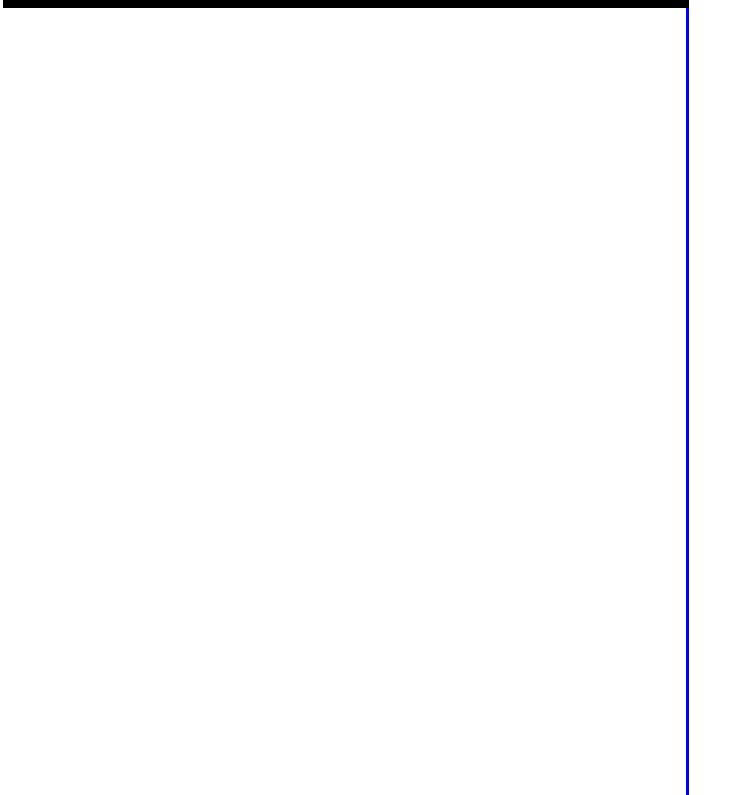
Table 22.

Major* Feeder High Schools for First-time Freshmen Fall Quarter

High School	City	Number from H.S. Registered at UCSD in Fall 2008	Percent of UCSD's Total 2008 Freshman Enrollment	Average H.S. GPA of Registered Freshmen	Average SAT I of Registered Freshmen	High School Quintile Rank
Diamond Bar High School	Diamond Bar	69	1.6%	3.92	1307	First
Monta Vista High School	Cupertino	66	1.5%	3.84	1376	First
Lowell High School	San Francisco	58	1.4%	3.82	1318	First
Lynbrook High School	San Jose	56	1.3%	4.01	1381	First
Arcadia High School	Arcadia	55	1.3%	3.88	1321	First
Mission San Jose High School	Fremont	41	1.0%	3.87	1403	First
Homestead High School	Cupertino	36	0.8%	3.97	1294	First
Temple City High School	Temple City	34	0.8%	3.98	1268	First
Walnut High School	Walnut	34	0.8%	3.89	1339	First
San Marino High School	San Marino	33	0.8%	3.93	1362	First
Torrey Pines High School	San Diego	31	0.7%	3.98	1365	First
Henry M. Gunn Senior High School	Palo Alto	31	0.7%	3.91	1389	First
Crescenta Valley High School	La Crescenta	30	0.7%	3.80	1315	First
Palos Verdes Penn. High School	Rolling Hills	30	0.7%	3.91	1329	First
Cerritos High School	Cerritos	28	0.7%	3.86	1309	First
Alhambra High School	Alhambra	26	0.6%	3.77	1210	Third
Northwood High School	Irvine	25	0.6%	3.98	1347	First
University High School	Irvine	25	0.6%	3.80	1401	First
Gretchen Whitney High School	Cerritos	22	0.5%	3.86	1371	First
Sunny Hills High School	Fullerton	22	0.5%	3.85	1274	First
Evergreen Valley High School	San Jose	21	0.5%	4.04	1300	First
Saratoga High School	Saratoga	21	0.5%	3.83	1370	First
Van Nuys High School	Van Nuys	21	0.5%	3.70	1222	Fourth
Beverly Hills High School	Beverly Hills	20	0.5%	3.80	1316	First
Troy High School	Fullerton	19	0.4%	3.71	1431	First
Monte Vista High School	Danville	18	0.4%	3.94	1317	First
North Hollywood High School	North Hollywood	18	0.4%	3.69	1189	Fourth
Scripps Ranch High School	San Diego	18	0.4%	4.01	1312	First
Palo Alto Senior High School	Palo Alto	17	0.4%	3.83	1409	First
Rancho Bernardo High School	San Diego	17	0.4%	3.99	1376	First
Mira Mesa High School	San Diego	17	0.4%	4.08	1198	Second
Samuel F B Morse High School	San Diego	17	0.4%	3.93	1073	Fourth
Esperanza High School	Anaheim	16	0.4%	4.09	1317	First
Granada Hills High School	Granada Hills	16	0.4%	3.83	1253	First
Irvine High School	Irvine	16	0.4%	4.01	1351	First
La Canada High School	La Canada	16	0.4%	3.87	1298	First
Mills High School	Millbrae	16	0.4%	3.89	1278	First
Foothill High School	Santa Ana	16	0.4%	4.03	1353	First
Westview High School	San Diego	16	0.4%	4.03	1378	First
Subtotal (Number of High Schools=39)		1,088	25.3%			
Other High Schools (Number of High Schools=1,224)		3,204	74.7%			
Total (Number of High Schools=1,263)		4,292	100.0%			

Diamond Bar High School in the San Jose area tops the list of major feeder schools for the fall 2008 freshman cohort.

* Sixteen or more students



**High School
Grades and
SAT Scores**

■ Academic Preparation: A Decade of Change

Academic preparation of incoming freshmen, as measured by high school GPA and SAT scores, have remained high over the past decade. The average SAT score in 2008 is 1252, and the average GPA is 3.94.

Table 23.

Freshman Cohort by HS GPA and SAT Score Averages Fall Quarter

First-Time Freshmen	1998	2003 ²	2004	2005	2006	2007	2008
• HS GPA ¹	3.89	3.96	3.96	3.94	3.93	3.94	3.94
• SAT I (Verbal & Math)	1242	1257	1242	1253	1243	1248	1252

¹ GPAs may exceed 4.0 with credit given for honors courses.

² SAT I scores reflect the higher of ACT scores converted to SAT Scores.

Table 24.

Freshman Cohort by Academic Indicator Ranges Fall Quarter

High School GPA Range	Percentage in Range		SAT I Composite Score Range	Percentage in Range	
	1998	2008		1998	2008
• 4.0 - High	41%	47%	• 1500 - 1600	1%	3%
• 3.90 - 3.99	11%	14%	• 1300 - 1499	33%	39%
• 3.60 - 3.89	31%	30%	• 1200 - 1299	34%	27%
• 3.30 - 3.59	14%	8%	• 1000 - 1199	29%	25%
• Low - 3.29	2%	1%	• Low - 999	4%	6%
Total	100%	100%	Total	100%	100%

Number of Honors Courses: 10th & 11th Grade	Percentage in Range		Number of College Preparatory (A-G) Courses*	Percentage in Range	
	1998	2008		1998	2008
• More than 8	76%	3%	• More than 50	14%	28%
• 7 - 8	11%	6%	• 46 - 50	24%	35%
• 5 - 6	7%	15%	• 41 - 45	35%	28%
• 1 - 4	5%	56%	• 36 - 40	24%	9%
• 0	1%	21%	• 30 - 35	3%	0%
Total	100%	100%	Total	100%	100%

* The G requirement went into effect in 2003.

Figure 14.

Academic Preparation: 1998-2008 Comparison Fall Quarter

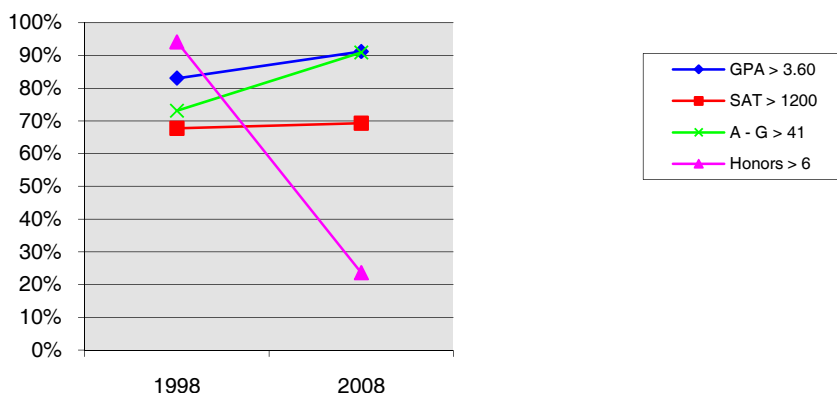


Table 25.

High School GPA¹ by Gender, Ethnicity, Major Field of Study, Home Location, 1st Generation College Status & Income Fall Quarter

First-Time Freshmen GPA	1998 ² Average	2003 Average	2004 Average	2005 Average	2006 Average	2007 Average	2008 Average
• Gender							
Female	3.90	3.97	3.98	3.95	3.94	3.95	3.95
Male	3.86	3.93	3.93	3.91	3.91	3.91	3.93
• Ethnicity							
African-American	3.81	3.90	3.90	3.88	3.73	3.85	3.88
Asian	3.84	3.91	3.92	3.89	3.89	3.91	3.90
Mexican-American	3.89	3.88	3.89	3.88	3.86	3.86	3.88
Filipino	3.93	4.06	4.02	4.03	4.02	4.02	4.01
Latino	3.94	3.94	3.95	3.90	3.85	3.88	3.90
Native-American	3.92	4.12	4.02	4.04	3.88	4.05	3.88
Caucasian	3.91	4.01	4.02	4.00	3.99	4.02	4.03
• Major Field of Study							
Arts	3.79	3.93	3.91	3.87	3.91	3.95	3.87
Humanities	3.77	3.93	3.91	3.87	3.87	3.95	3.97
Engineering	3.93	4.02	3.99	3.97	3.99	4.00	3.98
Science/Math	3.91	3.98	4.00	3.97	3.98	3.94	3.96
Biology	3.94	3.99	4.01	3.99	3.96	3.98	3.96
Social Science	3.82	3.90	3.91	3.88	3.86	3.87	3.89
Undec./Special	3.88	3.93	3.94	3.92	3.90	3.91	3.93
• Home Location							
San Diego	3.95	3.99	4.00	4.00	4.00	4.02	4.01
Los Angeles	3.84	3.92	3.93	3.90	3.89	3.90	3.91
San Francisco	3.83	3.95	3.95	3.92	3.90	3.92	3.92
Other CA	3.96	4.03	4.04	4.01	4.01	4.00	4.02
Out of State	3.97	4.04	4.07	4.00	4.05	4.04	4.02
• First Generation College Status							
First Generation	3.87	3.90	3.91	3.88	3.86	3.86	3.86
Not First Generation	3.89	3.98	3.98	3.96	3.95	3.98	3.98
• Income Group							
High (≥\$98,401)	3.88	4.01	4.00	3.98	3.98	4.00	3.99
Med. High (\$65,601-\$98,400)	3.91	4.00	4.02	4.00	3.96	4.02	3.98
Med. Low (\$32,801-\$65,600)	3.89	3.94	3.94	3.91	3.89	3.92	3.92
Low (≤\$32,800)	3.85	3.86	3.88	3.84	3.84	3.82	3.83
Missing	3.89	3.99	3.99	3.98	3.98	4.00	4.01
• Athletes³							
Athletes	NA	3.92	3.91	3.91	3.89	3.93	NA
Non-Athletes	NA	3.96	3.96	3.94	3.93	3.94	NA
Total	3.89	3.96	3.96	3.94	3.93	3.94	3.94

Average high school GPAs vary somewhat by gender, ethnicity, and major field of study. For example, the average GPA of females is typically higher than that of males.

¹ GPAs may exceed 4.0 with credit given for honors courses.

² 1998 Income Categories: High = Income ≥ \$87,001 Medium Low = \$29,001-\$58,000
 Medium High = \$58,001-\$87,000 Low = Income ≤ \$29,000

³ 2007 Athlete data not available until Winter Quarter 2008.

Table 26.

SAT¹ I Scores by Gender, Ethnicity, Major Field of Study, Home Location, 1st Generation College Status & Income Fall Quarter

First-Time Freshmen SAT I	1998 ² Average	2003 Average	2004 Average	2005 Average	2006 Average	2007 Average	2008 Average
• Gender							
Female	1218	1228	1217	1230	1217	1224	1225
Male	1272	1293	1276	1282	1277	1278	1287
• Ethnicity							
African-American	1162	1119	1109	1149	1130	1149	1150
Asian	1239	1266	1258	1267	1258	1266	1277
Mexican-American	1149	1104	1091	1119	1089	1101	1082
Filipino	1178	1208	1184	1194	1196	1195	1204
Latino	1189	1197	1167	1152	1140	1165	1130
Native-American	1277	1264	1261	1217	1232	1191	1226
Caucasian	1263	1290	1272	1285	1276	1286	1282
• Major Field of Study							
Arts	1232	1227	1235	1238	1240	1226	1255
Humanities	1261	1248	1265	1289	1251	1266	1248
Engineering	1282	1285	1275	1289	1270	1281	1280
Science/Math	1236	1227	1226	1227	1245	1236	1250
Biology	1229	1246	1247	1247	1245	1246	1256
Social Science	1217	1226	1222	1243	1222	1226	1235
Undec./Special	1241	1237	1234	1245	1239	1249	1240
• Home Location							
San Diego	1190	1197	1182	1212	1189	1197	1208
Los Angeles	1249	1250	1242	1246	1232	1234	1239
San Francisco	1281	1306	1291	1286	1286	1300	1303
Other CA	1233	1257	1215	1240	1229	1219	1227
Out of State	1297	1328	1321	1308	1296	1314	1294
• First Generation College Status							
First Generation	1174	1168	1160	1169	1150	1164	1163
Not First Generation	1257	1292	1276	1285	1279	1290	1294
• Income Group							
High (≥\$98,401)	1269	1311	1289	1305	1293	1316	1313
Med. High (\$65,601-\$98,400)	1242	1272	1251	1264	1257	1257	1267
Med. Low (\$32,801-\$65,600)	1226	1233	1219	1232	1218	1222	1219
Low (≤\$32,800)	1172	1166	1161	1164	1148	1162	1159
Missing	1277	1304	1303	1310	1305	1317	1328
• Athletes ³							
Athletes	NA	1245	1237	1263	1236	1246	NA
Non-Athletes	NA	1245	1243	1253	1243	1248	NA
Total	1242	1257	1242	1253	1243	1248	1252

The average SAT composite scores tend to vary by gender, ethnicity, and major. Males typically earn higher SAT scores compared to females.

¹ SAT scores were "recentered" starting with the 1996 freshman cohort.

² 1998 Income Categories: High = Income ≥ \$87,001 Medium Low = \$29,001-\$58,000
 Medium High = \$58,001-\$87,000 Low = Income ≤ \$29,000

³ 2007 Athlete data not available until Winter Quarter 2008.

Table 27.

Intercampus Comparison¹ of Average SAT I Composite Scores **Fall Quarter**

UC Campus	1998	1999	2000	2001	2002 ²	2003 ²	2004 ²	2005 ²	2006 ²	2007 ²	2008 ²
• Berkeley	1330	1305	1308	1293	1303	1303	1314	1324	1311	1331	1322
• Davis	1149	1165	1170	1163	1180	1184	1170	1187	1153	1158	1171
• Irvine	1126	1155	1171	1167	1179	1176	1209	1192	1189	1182	1191
• Los Angeles	1263	1262	1266	1256	1264	1278	1290	1284	1283	1276	1300
• Merced ³	NA	NA	NA	NA	NA	NA	NA	1070	1050	1055	1043
• Riverside	1061	1057	1056	1068	1057	1064	1080	1078	1043	1046	1051
• San Diego	1240	1250	1259	1264	1239	1245	1242	1253	1243	1248	1252
• Santa Barbara	1158	1176	1181	1183	1172	1187	1184	1203	1183	1193	1191
• Santa Cruz	1135	1150	1143	1150	1138	1143	1157	1159	1134	1142	1151
Systemwide	1196	1198	1199	1197	1195	1199	1208	1211	NA	NA	NA

¹ Source: University of California, Frequency Distribution of College Entrance Examination Board (CEEB) Test Scores For Entering Freshmen CSS 050B.

² 2002-2008 data based on personal contact with representatives for each UC Campus and are subject to change.

³ Merced enrolled its first freshman class in Fall 2005.

When compared on the basis of average SAT scores, UCSD ranks among the top three universities in the UC system.

Table 28.

UCSD's Position Relative to Other UC Campuses on SAT I Scores **Fall Quarter**

Rank	1998	1999	2000	2001	2002	2003	2004	2005	2006	2007	2008
• 1	UCB	UCB	UCB	UCB	UCB	UCB	UCB	UCB	UCB	UCB	UCB
• 2	UCLA	UCLA	UCLA	UCSD	UCLA	UCLA	UCLA	UCLA	UCLA	UCLA	UCLA
• 3	UCSD	UCSD	UCSD	UCLA	UCSD	UCSD	UCSD	UCSD	UCSD	UCSD	UCSD
• 4	UCSB	UCSB	UCSB	UCSB	UCD	UCSB	UCI	UCSB	UCI	UCSB	UCSB
• 5	UCD	UCD	UCI	UCI	UCI	UCD	UCSB	UCI	UCSB	UCI	UCI
• 6	UCSC	UCI	UCD	UCD	UCSB	UCI	UCD	UCD	UCD	UCD	UCD
• 7	UCI	UCSC	UCSC	UCSC	UCSC	UCSC	UCSC	UCSC	UCSC	UCSC	UCSC
• 8	UCR	UCR	UCR	UCR	UCR	UCR	UCR	UCR	UCM	UCM	UCR
• 9								UCM	UCR	UCR	UCM



**New
Transfer
Students**

■ New Transfer Students

Over ninety-eight hundred transfer students applied for admission to UCSD for fall 2008. Approximately, 65% of these students were admitted. Of those students admitted, 1,876 registered resulting in a yield of 29%.

Table 29.

New Transfers: Applicants, Admits & Registered Fall Quarter

New Transfers	1998	2003	2004	2005	2006	2007	2008	10 Year Δ
• Applicants	4,654	8,854	9,825	9,291	8,945	8,872	9,871	+112%
• Admits	2,503	5,058	4,824	5,939	5,755	6,494	6,443	+157%
Admit/Applicant Rate	54%	57%	49%	64%	64%	73%	65%	
• Registered	888	1,455	1,325	1,680	1,482	1,742	1,876	+111%
Registered/Admit Rate	35%	29%	27%	28%	26%	27%	29%	

Figure 15.

New Transfers: Applicants, Admits & Registered Fall Quarter

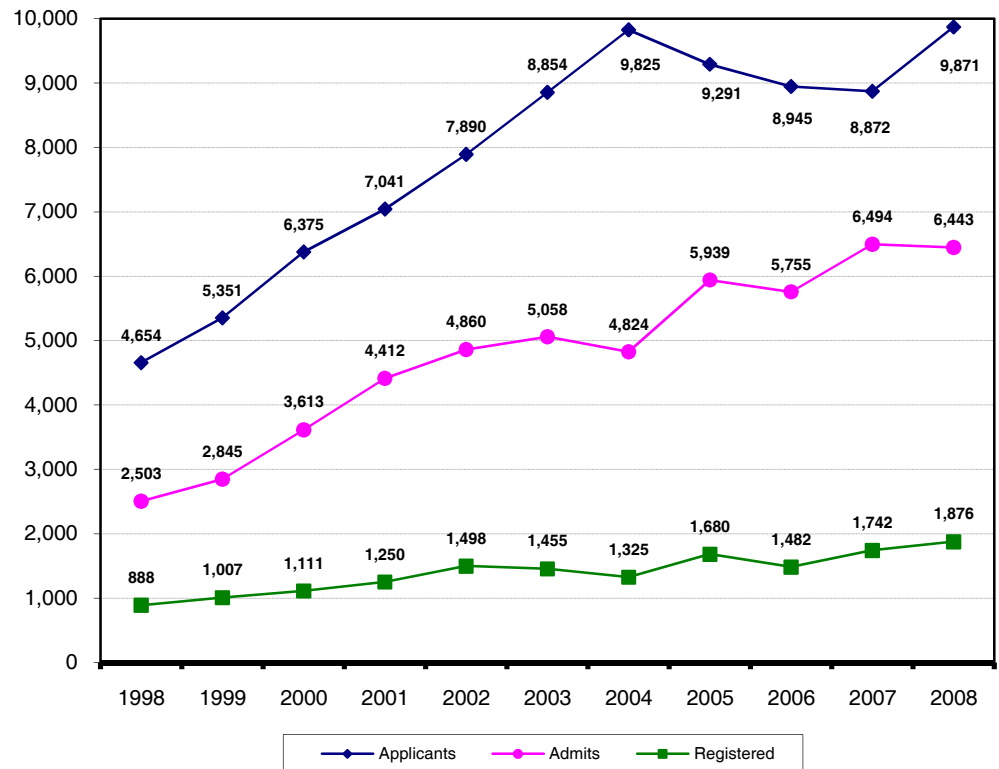


Table 30.

New Transfers by Gender Fall Quarter

Gender	1998	2003	2004	2005	2006	2007	2008	10 Year Δ
• Female	421 47%	676 46%	631 48%	785 47%	668 45%	814 47%	847 45%	+101%
• Male	467 53%	779 54%	694 52%	895 53%	814 55%	928 53%	1,029 55%	+120%
Total	888	1,455	1,325	1,680	1,482	1,742	1,876	+111%

Unlike the 2008 freshman cohort, male transfer students outnumber women by approximately 10%.

Figure 16.

New Transfers by Gender Fall Quarter

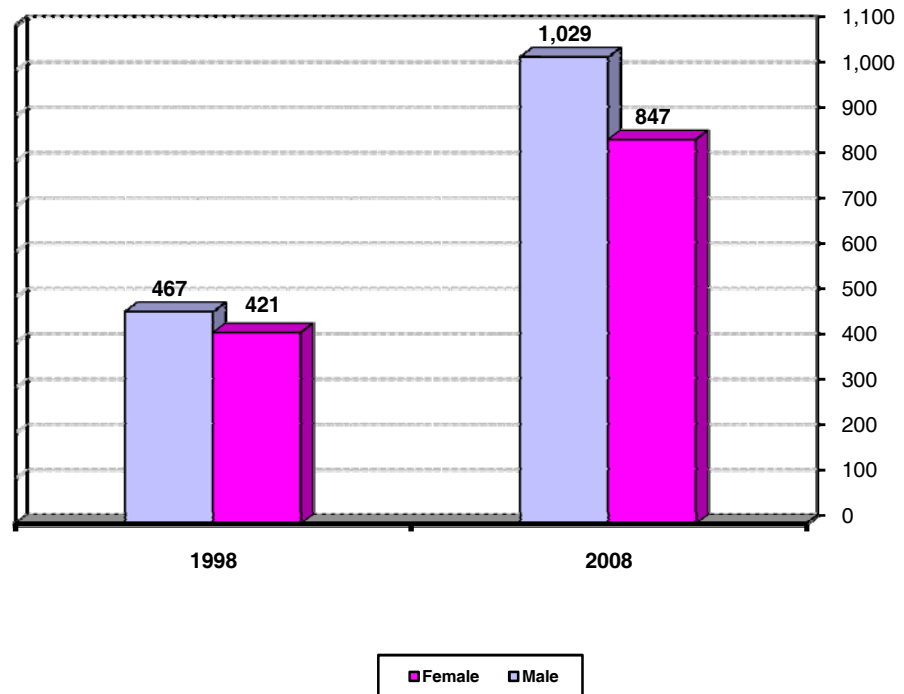


Table 31.

New Transfers by Ethnicity

Fall Quarter

For transfer students, the proportion of Asian students has increased over the past decade, while the proportion of Caucasian students has declined. The proportion of Mexican-American, Filipino, Latino and Native-American have stayed approximately the same. The proportion of African-American students has increased slightly.

Ethnicity	1998	2003	2004	2005	2006	2007	2008	10 Year Δ
• African-American	13 1%	22 2%	24 2%	27 2%	24 2%	37 2%	48 3%	+269%
• Asian	197 22%	481 33%	387 29%	549 33%	504 34%	585 34%	725 39%	+268%
• Mexican-American	68 8%	102 7%	112 8%	138 8%	121 8%	165 9%	176 9%	+159%
• Filipino	45 5%	49 3%	55 4%	69 4%	50 3%	83 5%	83 4%	+84%
• Latino	25 3%	43 3%	44 3%	39 2%	55 4%	53 3%	53 3%	+112%
• Native-American	9 1%	10 1%	5 0%	9 1%	11 1%	6 0%	8 0%	-11%
• Caucasian	332 37%	502 35%	472 36%	600 36%	525 35%	581 33%	577 31%	+74%
• Other/Undeclared	199 22%	246 17%	226 17%	249 15%	192 13%	232 13%	206 11%	+4%
Total	888	1,455	1,325	1,680	1,482	1,742	1,876	+111%

Table 32.

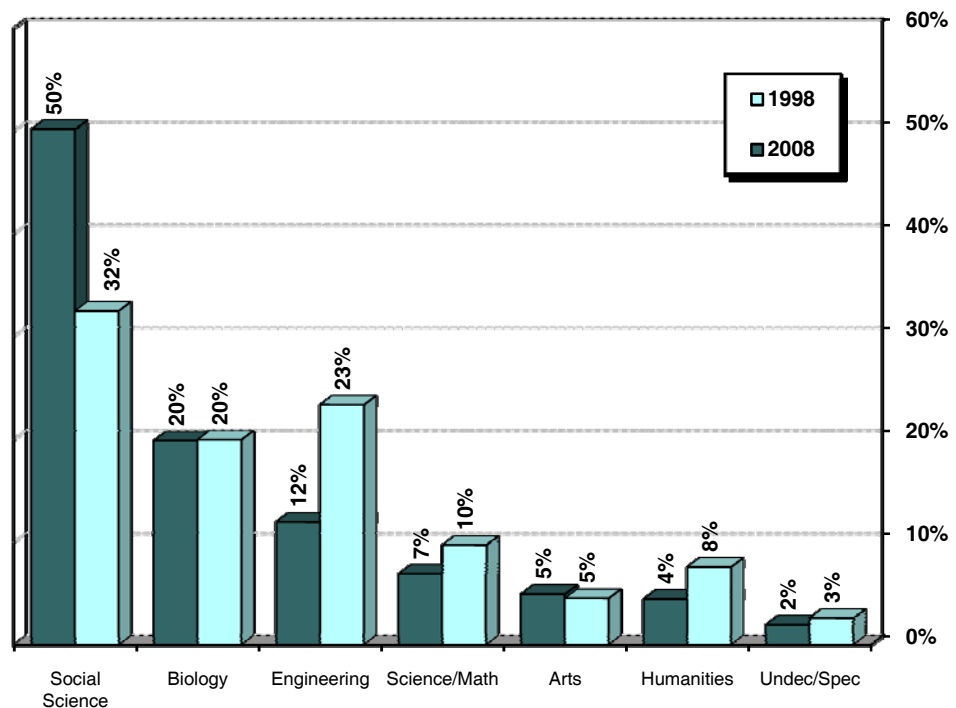
New Transfers by Major Field of Study Fall Quarter

Major Field of Study	1998	2003	2004	2005	2006	2007	2008	10 Year Δ
• Arts	40 5%	102 7%	68 5%	73 4%	67 5%	83 5%	92 5%	+130%
• Humanities	67 8%	86 6%	71 5%	94 6%	82 6%	72 4%	83 4%	+24%
• Engineering	207 23%	356 24%	220 17%	256 15%	145 10%	180 10%	224 12%	+8%
• Science/Math	86 10%	89 6%	115 9%	157 9%	139 9%	155 9%	129 7%	+50%
• Biology	177 20%	142 10%	180 14%	290 17%	294 20%	338 19%	372 20%	+110%
• Social Science	288 32%	619 43%	641 48%	771 46%	702 47%	854 49%	940 50%	+226%
• Undeclared/ Special	23 3%	61 4%	30 2%	39 2%	53 4%	60 3%	36 2%	+57%
Total	888	1,455	1,325	1,680	1,482	1,742	1,876	+111%

Approximately one-half (50%) of all new transfer students declared a major in the social sciences.

Figure 17.

New Transfers by Major Field of Study Fall Quarter



Ninety-three percent of new transfer students attended a California Community College prior to enrolling at UCSD. The largest number of new transfer students come from either the Los Angeles or San Diego areas.

Table 33.

New Transfers by Transfer Institution Fall Quarter

Transfer Institution	1998	2003	2004	2005	2006	2007	2008	10 Year Δ
• California Community Colleges	868 98%	1,380 95%	1,215 92%	1,567 93%	1,368 92%	1,588 91%	1,747 93%	+101%
Transfer Admission Guarantee (TAG)	159 18%	175 12%	294 22%	327 19%	345 23%	327 19%	342 18%	+115%
Non-TAG	709 80%	1,280 88%	921 70%	1,240 74%	1,023 69%	1,261 72%	1,405 75%	+98%
• Intercampus Transfer/ Other 4 yr. College	16 2%	69 5%	104 8%	107 6%	109 7%	147 8%	121 6%	+656%
• Other/Unknown	4 0%	6 0%	6 0%	6 0%	5 0%	7 0%	8 0%	+100%
Total	888	1,455	1,325	1,680	1,482	1,742	1,876	+111%

Table 34.

New Transfers by Home Location Fall Quarter

Home Location	1998	2003	2004	2005	2006	2007	2008	10 Year Δ
• San Diego	325 37%	411 28%	465 35%	523 31%	446 30%	480 28%	503 27%	+55%
• Los Angeles	291 33%	426 29%	393 30%	545 32%	493 33%	616 35%	705 38%	+142%
• San Francisco	129 15%	271 19%	218 16%	303 18%	251 17%	299 17%	322 17%	+150%
• Other California	100 11%	143 10%	106 8%	138 8%	137 9%	158 9%	131 7%	+31%
• Out-of-State	2 0%	11 1%	8 1%	9 1%	12 1%	24 1%	7 0%	+250%
• Foreign	41 5%	193 13%	135 10%	162 10%	143 10%	165 9%	208 11%	+407%
Total	888	1,455	1,325	1,680	1,482	1,742	1,876	+111%

Table 35.

New Transfers by Undergraduate College Fall Quarter

Undergraduate College	1998	2003	2004	2005	2006	2007	2008	10 Year Δ
• Revelle	133 15%	223 15%	190 14%	282 17%	215 15%	230 13%	284 15%	+114%
• John Muir	193 22%	333 23%	242 18%	411 24%	296 20%	367 21%	260 14%	+35%
• Thurgood Marshall	223 25%	309 21%	306 23%	376 22%	290 20%	356 20%	392 21%	+76%
• Earl Warren	265 30%	369 25%	305 23%	254 15%	249 17%	265 15%	251 13%	-5%
• Eleanor Roosevelt	74 8%	221 15%	213 16%	247 15%	295 20%	316 18%	366 20%	+395%
• Sixth	NA NA	NA NA	69 5%	110 7%	137 9%	208 12%	323 17%	NA
Total	888	1,455	1,325	1,680	1,482	1,742	1,876	+111%

In 2008, Thurgood Marshall enrolled the largest proportion (21%) of new transfer students, followed closely by Eleanor Roosevelt (20%).

Figure 18.

New Transfers by Undergraduate College Fall Quarter

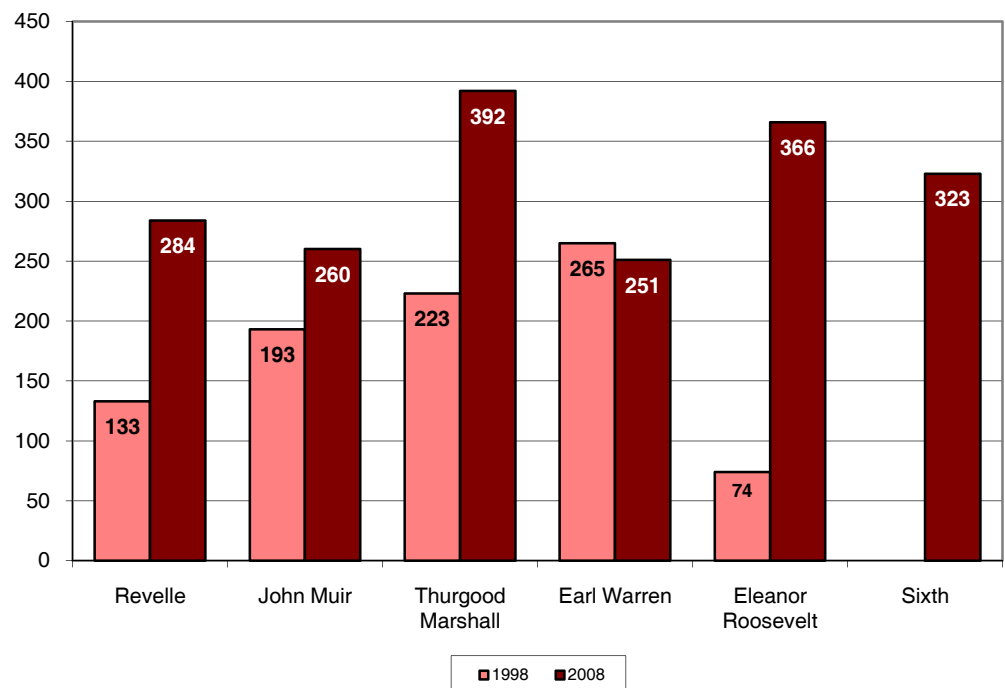


Table 36.

New Transfers by 1st Generation College Status Fall Quarter

College Status	1998	2003	2004	2005	2006	2007	2008	10 Year Δ
• First Generation	286 32%	448 31%	420 32%	542 32%	458 31%	542 31%	625 33%	+119%
• Not First Generation	602 68%	1,007 69%	905 68%	1,138 68%	1,024 69%	1,200 69%	1,251 67%	+108%
Total	888	1,455	1,325	1,680	1,482	1,742	1,876	+111%

The majority (67%) of new transfer students have at least one parent who has graduated from a two-year junior college or four-year college/university.

Table 37.

New Transfers by Income Group Fall Quarter

Income	1998*	2003	2004	2005	2006	2007	2008	10 Year Δ
• High (≥\$98,401)	151 17%	248 17%	255 19%	304 18%	280 19%	353 20%	367 20%	+143%
• Medium High (\$65,601 - \$98,400)	111 13%	170 12%	143 11%	200 12%	158 11%	193 11%	203 11%	+83%
• Medium Low (\$32,801 - \$65,600)	163 18%	289 20%	225 17%	255 15%	215 15%	291 17%	288 15%	+77%
• Low (≤\$32,800)	165 19%	289 20%	272 21%	245 15%	242 16%	284 16%	289 15%	+75%
• Missing	298 34%	459 32%	430 32%	676 40%	587 40%	621 36%	729 39%	+145%
Total	888	1,455	1,325	1,680	1,482	1,742	1,876	+111%

* 1998 Income Categories:
 High = Income ≥ \$87,001
 Medium High = \$58,001-\$87,000
 Medium Low = \$29,001-\$58,000
 Low = Income ≤ \$29,000

Approximately, 2% of new transfer students participate on a UCSD athletic team.

Table 38.

New Transfers Freshmen by Athletic Status Fall Quarter

College Status	1998	2003	2004	2005	2006	2007	2008*	10 Year Δ
• Athlete	NA NA	40 3%	37 3%	35 2%	31 2%	41 2%	NA NA	NA
• Non-Athlete	NA NA	1,415 97%	1,288 97%	1,645 98%	1,451 98%	1,701 98%	NA NA	NA
Total	888	1,455	1,325	1,680	1,482	1,742	1,876	+111%

* 2008 Athlete data not available until Winter Quarter 2009.

Table 39.

Major* Feeder Transfer Institutions **Fall Quarter**

School	City	Enrollment N Fall 2008	% of Total Enrollment
De Anza College	Cupertino	142	7.6%
San Diego Mesa College	San Diego	142	7.6%
Santa Monica College	Santa Monica	107	5.7%
Pasadena City College	Pasadena	92	4.9%
Palomar College	San Marcos	80	4.3%
Grossmont Community College	El Cajon	77	4.1%
Mira Costa College	Oceanside	73	3.9%
Diablo Valley College	Pleasant Hill	61	3.3%
Mount San Antonio College	Walnut	56	3.0%
Orange Coast College	Costa Mesa	49	2.6%
San Diego-Miramar College	San Diego	47	2.5%
Saddleback Community College South	Mission Viejo	47	2.5%
Foothill College	Los Altos Hills	43	2.3%
Glendale Community College	Glendale	41	2.2%
Moorpark College	Moorpark	41	2.2%
Southwestern College	Chula Vista	41	2.2%
San Diego City College	San Diego	36	1.9%
El Camino College	Torrance	35	1.9%
UC Riverside	Riverside	31	1.7%
Los Angeles Pierce College	Woodland Hills	30	1.6%
Irvine Valley College	Irvine	25	1.3%
City College of San Francisco	San Francisco	25	1.3%
Fullerton College	Fullerton	21	1.1%
Santa Barbara City College	Santa Barbara	21	1.1%
Ventura College	Ventura	18	1.0%
Ohlone College	Fremont	17	0.9%
UC Santa Cruz	Santa Cruz	17	0.9%
Cerritos College	Cerritos	16	0.9%
East Los Angeles College	Los Angeles	15	0.8%
College of San Mateo	San Mateo	14	0.7%
Cuyamaca College	El Cajon	14	0.7%
Imperial Valley College	Imperial	14	0.7%
Los Angeles City College	Los Angeles	13	0.7%
Santa Rosa Junior College	Santa Rosa	13	0.7%
College of the Canyons	Santa Clarita	12	0.6%
Riverside Community College	Riverside	12	0.6%
Laney College	Oakland	11	0.6%
Mount San Jacinto College	San Jacinto	11	0.6%
West Valley College	Saratoga	11	0.6%
Subtotal (Number of Transfer Institutions = 39)		1,571	83.7%
Other Institutions (Number of Transfer Institutions = 94)		305	16.3%
Total (Number of Transfer Institutions = 133)		1,876	100.0%

De Anza College tops the list of major feeder transfer institutions. Approximately 8% percent of the 2008 transfer cohort (n=142) transferred to UCSD from De Anza College.

* Eleven or more matriculants from named transfer institution.



**New
Transfer
Student
Academic
Preparation**

■ Academic Preparation: New Transfer Students

Table 40.

New Transfer Cohort by Transfer GPA Averages Fall Quarter

Transfer	1998	2003	2004	2005	2006	2007	2008
• Transfer GPA	3.27	3.34	3.40	3.32	3.33	3.30	3.33

Table 41.

New Transfer Cohort by Academic Indicator Ranges Fall Quarter

Transfer GPA Range	Percentage in Range	
	1998	2008
• 3.90 - High	7%	6%
• 3.60 - 3.89	16%	19%
• 3.30 - 3.59	25%	28%
• 3.00 - 3.29	29%	29%
• 2.70 - 2.99	19%	14%
• Low - 2.69	6%	4%
Total	100%	100%

The mean transfer GPA for the 2008 transfer cohort was 3.33. Approximately one-quarter (25%) of the new transfer cohort had earned a GPA of 3.60 and higher prior to attending UCSD.



**Degrees
Conferred**

■ Degrees Conferred

UCSD awarded more than seventy-one hundred undergraduate, graduate and professional degrees in 2007/2008, representing the largest number of UCSD graduates to date.

Table 42.

Degrees Conferred: All Degree Types Fall Quarter

All Degree Types	'97/'98	'02/'03	'03/'04	'04/'05	'05/'06	'06/'07	'07/'08	10 Year Δ
• Bachelors	3,221 76%	4,248 79%	4,136 75%	5,043 78%	5,200 77%	5,061 76%	5,337 75%	+66%
• Masters	404 10%	573 11%	785 14%	797 12%	761 11%	901 13%	894 13%	+121%
• Candidate in Philosophy	178 4%	170 3%	161 3%	170 3%	253 4%	185 3%	258 4%	+45%
• Doctor of Philosophy	310 7%	279 5%	327 6%	303 5%	376 6%	387 6%	488 7%	+57%
• Doctor of Medicine	102 2%	128 2%	100 2%	117 2%	186 3%	101 2%	125 2%	+23%
• Doctor of Pharmacy	NA NA	NA NA	NA NA	NA NA	NA NA	47 1%	31 0%	NA
Total	4,215	5,398	5,509	6,430	6,776	6,682	7,133	+69%

Figure 19.

Degrees Conferred Undergraduate and Graduate Degree Trends Fall Quarter

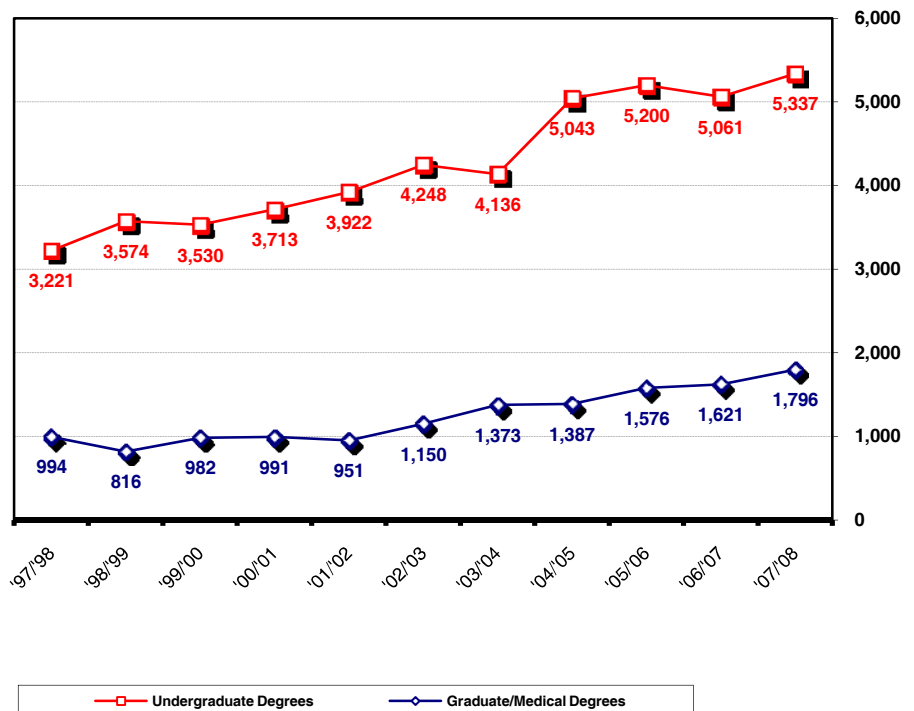


Table 43.

Undergraduate Degrees by Gender Fall Quarter

Gender	'97/'98	'02/'03	'03/'04	'04/'05	'05/'06	'06/'07	'07/'08	10 Year Δ
• Female	1,667 52%	2,260 53%	2,272 55%	2,658 53%	2,747 53%	2,642 52%	2,847 53%	+71%
• Male	1,554 48%	1,988 47%	1,864 45%	2,385 47%	2,453 47%	2,419 48%	2,490 47%	+60%
Total UG Degrees	3,221	4,248	4,136	5,043	5,200	5,061	5,337	+66%

Of the 5,337 undergraduate degrees awarded in 2007/2008, the majority (53%) were awarded to women.

Figure 20.

Undergraduate Degrees by Gender Fall Quarter

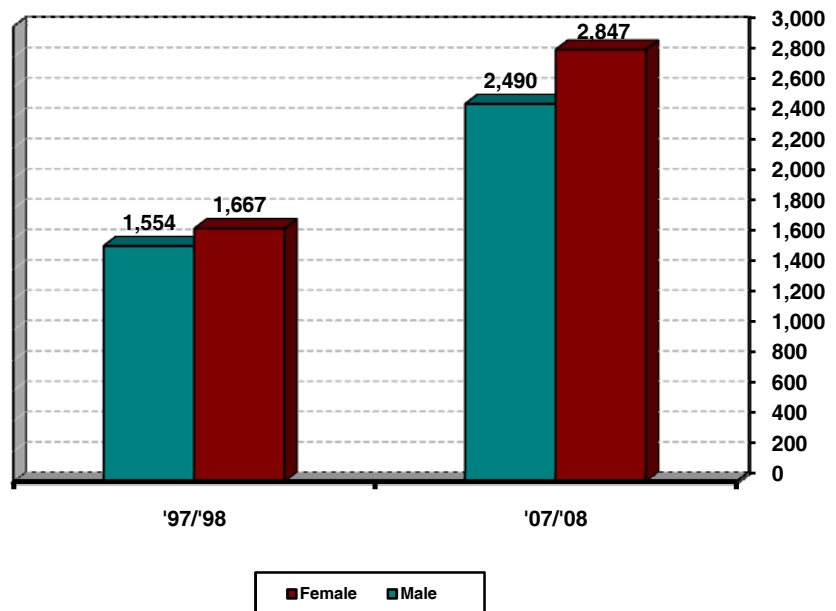


Table 44.

Undergraduate Degrees by Ethnicity Fall Quarter

Ethnicity	'97/'98	'02/'03	'03/'04	'04/'05	'05/'06	'06/'07	'07/'08	10 Year Δ
• African-American	72 2%	64 2%	50 1%	59 1%	58 1%	70 1%	55 1%	-24%
• Asian	807 25%	1,263 30%	1,276 31%	1,690 34%	1,794 35%	1,692 33%	1,933 36%	+140%
• Mexican-American	279 9%	316 7%	304 7%	349 7%	347 7%	386 8%	386 7%	+38%
• Filipino	185 6%	204 5%	196 5%	249 5%	271 5%	234 5%	256 5%	+38%
• Latino	78 2%	91 2%	85 2%	107 2%	116 2%	129 3%	127 2%	+63%
• Native-American	29 1%	29 1%	15 0%	31 1%	22 0%	27 1%	21 0%	-28%
• Caucasian	1,494 46%	1,692 40%	1,669 40%	1,878 37%	1,879 36%	1,841 36%	1,770 33%	+18%
• Other/Undeclared	277 9%	589 14%	541 13%	680 13%	713 14%	682 13%	789 15%	+185%
Total UG Degrees	3,221	4,248	4,136	5,043	5,200	5,061	5,337	+66%

Over fifty percent (51%) of the UCSD bachelor's degrees awarded in 2007/2008 were earned by students of color.

Figure 21.

Undergraduate Degrees by Ethnicity Fall Quarter

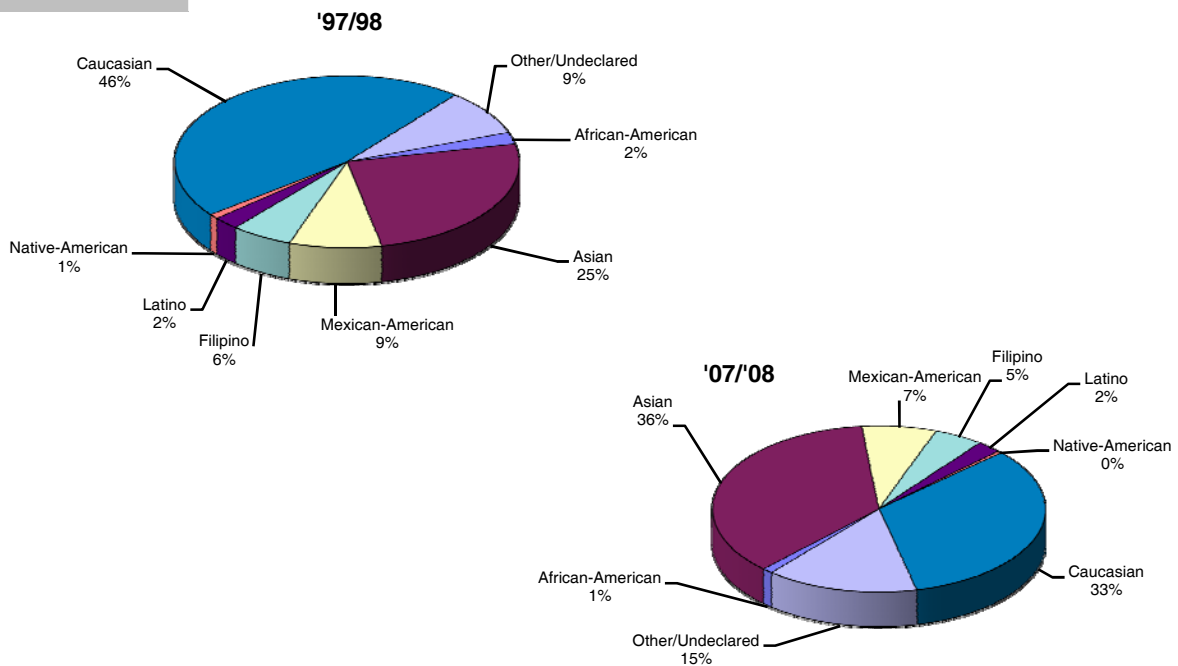


Table 45.

Undergraduate Degrees by Major Field of Study **Fall Quarter**

Major Field of Study	'97/'98	'02/'03	'03/'04	'04/'05	'05/'06	'06/'07	'07/'08	10 Year Δ
• Arts	123 4%	300 7%	281 7%	296 6%	280 5%	257 5%	232 4%	+89%
• Humanities	291 9%	226 5%	253 6%	259 5%	280 5%	262 5%	291 5%	+0%
• Engineering	402 12%	674 16%	654 16%	998 20%	933 18%	814 16%	763 14%	+90%
• Science/Math	172 5%	252 6%	259 6%	327 6%	310 6%	339 7%	360 7%	+109%
• Biology	868 27%	742 17%	661 16%	752 15%	906 17%	939 19%	1,113 21%	+28%
• Social Science	1,362 42%	2,051 48%	2,022 49%	2,406 48%	2,486 48%	2,446 48%	2,577 48%	+89%
• Double/Special	3 0%	3 0%	6 0%	5 0%	5 0%	4 0%	1 0%	-67%
Total UG Degrees	3,221	4,248	4,136	5,043	5,200	5,061	5,337	+66%

Almost one-half (48%) of all bachelor's degrees were awarded to social science majors.

Table 46.

Undergraduate Degrees by College **Fall Quarter**

College	'97/'98	'02/'03	'03/'04	'04/'05	'05/'06	'06/'07	'07/'08	10 Year Δ
• Revelle	564 18%	793 19%	715 17%	879 17%	841 16%	799 16%	854 16%	+51%
• John Muir	840 26%	937 22%	916 22%	1,008 20%	1,066 21%	972 19%	1,031 19%	+23%
• Thurgood Marshall	635 20%	940 22%	932 23%	1,105 22%	1,002 19%	989 20%	1,001 19%	+58%
• Earl Warren	856 27%	1,067 25%	1,009 24%	1,363 27%	1,367 26%	1,254 25%	1,125 21%	+31%
• Eleanor Roosevelt*	326 10%	511 12%	564 14%	681 14%	773 15%	733 14%	818 15%	+151%
• Sixth**	NA NA	NA NA	NA NA	7 0%	151 3%	314 6%	508 10%	NA
Total UG Degrees	3,221	4,248	4,136	5,043	5,200	5,061	5,337	+66%

* Eleanor Roosevelt College enrolled its first class of undergraduates in 1988.

** Sixth College enrolled its first class of undergraduates in 2002.

Table 47.

Undergraduate Degrees by 1st Generation College Status Fall Quarter

College Status	'97/'98	'02/'03	'03/'04	'04/'05	'05/'06	'06/'07	'07/'08	10 Year Δ
• First Generation	613 19%	998 23%	982 24%	1,189 24%	1,180 23%	1,251 25%	1,429 27%	+133%
• Not First Generation	2,608 81%	3,250 77%	3,154 76%	3,854 76%	4,020 77%	3,810 75%	3,908 73%	+50%
Total UG Degrees	3,221	4,248	4,136	5,043	5,200	5,061	5,337	+66%

Table 48.

Undergraduate Degrees by Income Group Fall Quarter

Income	'97/'98	'02/'03	'03/'04	'04/'05	'05/'06	'06/'07	'07/'08	10 Year Δ
• High (\geq \$98,401)	613 19%	972 23%	905 22%	1,190 24%	1,212 23%	1,170 23%	1,192 22%	+94%
• Medium High (\$65,601 - \$98,400)	545 17%	612 14%	618 15%	693 14%	694 13%	608 12%	647 12%	+19%
• Medium Low (\$32,801 - \$65,600)	586 18%	851 20%	833 20%	1,035 21%	1,020 20%	961 19%	1,006 19%	+72%
• Low (\leq \$32,800)	469 15%	837 20%	742 18%	879 17%	981 19%	936 18%	1,006 19%	+114%
• Missing	1,008 31%	976 23%	1,038 25%	1,246 25%	1,293 25%	1,386 27%	1,486 28%	+47%
Total UG Degrees	3,221	4,248	4,136	5,043	5,200	5,061	5,337	+66%

* 1997-1998 Income Categories:

High = Income \geq \$87,001

Medium High = \$58,001-\$87,000

Medium Low = \$29,001-\$58,000

Low = Income \leq \$29,000

Table 49.

Time-to-Degree*/Academic Performance
Entered UCSD from High School Fall Quarter

Undergraduate Degrees	'97/'98	'02/'03	'03/'04	'04/'05	'05/'06	'06/'07	'07/'08
• Time-to-Degree							
Average Elapsed Time in Years	4.4 yrs.	4.5 yrs.	4.4 yrs.	4.3 yrs.	4.3 yrs.	4.3 yrs.	4.3 yrs.
Average Elapsed Time in Quarters	13.3 qtrs.	13.5 qtrs.	13.3 qtrs.	13.0 qtrs.	12.8 qtrs.	12.9 qtrs.	12.8 qtrs.
• GPA at Graduation							
GPA \geq 3.5 (B+ or greater)	21.0%	22.7%	25.4%	25.8%	25.9%	25.0%	24.8%
$3.00 \leq$ GPA $<$ 3.5 (B to B+)	44.0%	43.4%	42.8%	43.6%	43.4%	42.6%	43.3%
$2.50 \leq$ GPA $<$ 3.00 (C+ to B)	27.8%	26.6%	25.9%	25.0%	25.3%	25.5%	25.7%
$2.0 \leq$ GPA $<$ 2.50 (C to C+)	7.2%	7.2%	5.9%	5.7%	5.4%	6.9%	6.3%
GPA $<$ 2.0	0.0%	0.0%	0.0%	0.0%	0.0%	0.0%	0.0%

The average time-to-degree for undergraduate students entering from high school is approximately 13 quarters or 4.3 years. The average GPA earned by the 2007/2008 graduating class is 3.18.

* Time-to-degree is reported in elapsed quarters from first enrollment date to graduation. Only the records of students who enter UCSD in the Fall Quarter are included in time-to-degree calculations. An academic year is defined as three quarters; twelve quarters equal four years. Summer degrees are combined with Fall degrees, and combined, represent one quarter.

Figure 22.

Grade Distribution: Degree Recipients Fall Quarter

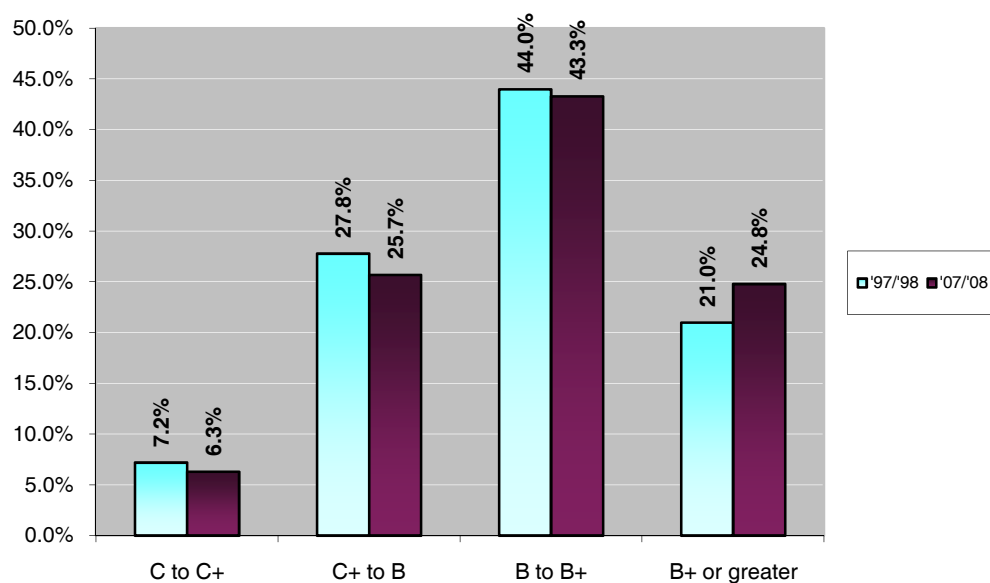


Table 50.

Time-to-Degree*/Academic Performance
Entered UCSD from a Two-Year Community College Fall Quarter

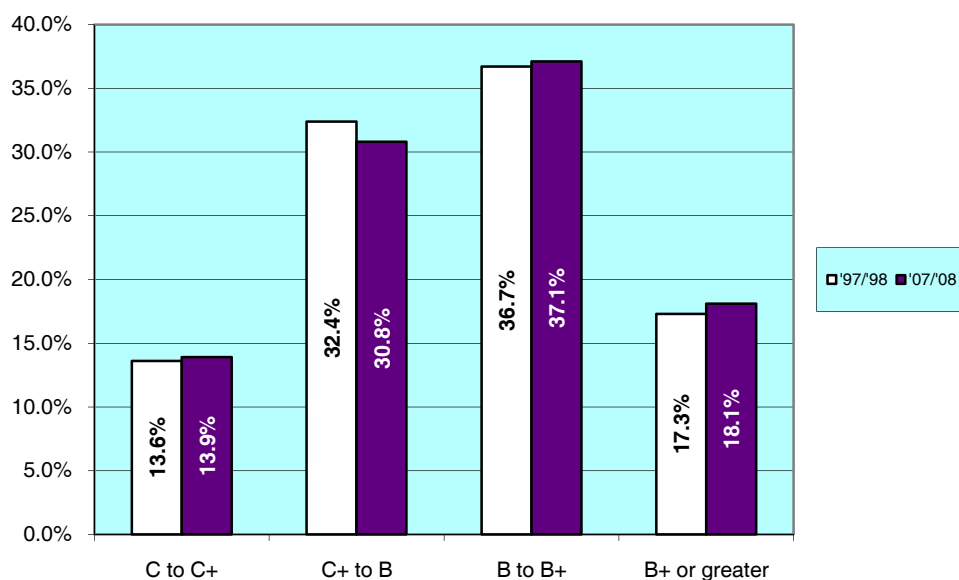
Undergraduate Degrees	'97/'98	'02/'03	'03/'04	'04/'05	'05/'06	'06/'07	'07/'08
• Time-to-Degree							
Average Elapsed Time in Years	3.0 yrs.	2.7 yrs.	2.7 yrs.	2.7 yrs.	2.6 yrs.	2.6 yrs.	2.7 yrs.
Average Elapsed Time in Quarters	8.9 qtrs.	8.2 qtrs.	8.2 qtrs.	8.0 qtrs.	7.9 qtrs.	7.8 qtrs.	8.0 qtrs.
• GPA at Graduation							
GPA \geq 3.5 (B+ or greater)	17.3%	17.1%	19.6%	16.8%	19.3%	18.8%	18.1%
$3.00 \leq$ GPA < 3.5 (B to B+)	36.7%	36.5%	36.6%	38.6%	35.9%	37.1%	37.1%
$2.50 \leq$ GPA < 3.00 (C+ to B)	32.4%	34.5%	30.6%	31.2%	32.5%	32.0%	30.8%
$2.0 \leq$ GPA < 2.50 (C to C+)	13.6%	12.0%	13.1%	13.2%	12.3%	12.1%	13.9%
GPA < 2.0	0.0%	0.0%	0.0%	0.0%	0.0%	0.0%	0.0%

* Time-to-degree is reported in elapsed quarters from first enrollment date to graduation. Only the records of students who enter UCSD in the Fall Quarter are included in time-to-degree calculations. An academic year is defined as three quarters; twelve quarters equal four years. Summer degrees are combined with Fall degrees, and combined, represent one quarter.

Community College transfer students complete their degree requirements at UCSD in under nine quarters or three years. The average GPA earned by the 2007/2008 graduating class for courses taken at UCSD was 3.04.

Figure 23.

Grade Distribution: Degree Recipients Fall Quarter





**Appendix:
Undergraduate
Major Fields
of Study /
Academic
Departments**

■ Undergraduate Major Fields of Study/Academic Departments

ARTS

Music Department
Theatre & Dance Department
Visual Arts Department

HUMANITIES

Classical Studies
History Department
Literature Department
Philosophy Department

SCHOOL OF ENGINEERING

Bioengineering Department
Chemical Engineering
Computer Science and Engineering Department
Electrical and Computer Engineering Department
Mechanical and Aerospace Engineering Department
Structural Engineering

BIOLOGY

Biology Department

SPECIAL AND UNDECLARED

Individual Studies
Limited Status
Special-Employee
Undeclared

SOCIAL SCIENCE

Anthropology Department
Chinese Studies
Cognitive Science Department
Communication Department
Critical Gender Studies
Economics Department
Ethnic Studies Department
German Studies
Human Development Program
International Studies
Italian Studies
Japanese Studies
Judaic Studies
Latin American Studies
Linguistics Department
Political Science Department
Program for the Study of Religion
Psychology Department
Russian and Soviet Studies
Sociology Department
Third World Studies
Urban Studies and Planning Program

SCIENCE AND MATH

Chemistry and Biochemistry Department
Earth Sciences Program
Environmental Systems
Mathematics Department
Physics Department



The Student Digest is an annual publication of the
Office of Student Research & Information,
Student Affairs, 858-534-2382.

This document is also available on the
World Wide Web at:

studentresearch.ucsd.edu