



UNIVERSITY OF CALIFORNIA, SAN DIEGO
STUDENT DIGEST
2009-2010
Enrollment and Academic Performance Statistics

Office of Student Research
& Information, Student Affairs
studentresearch.ucsd.edu

■ INTRODUCTION

□ The *Student Digest*, published annually by the Office of Student Research and Information, provides the campus community with a broad overview of trends in undergraduate enrollments, academic performance and graduation statistics. If you have questions or comments regarding this publication, please contact the Office of Student Research and Information/Student Affairs at (858) 534-2382. If you wish to view this report and other statistical reports, they can be found on the World Wide Web at <http://studentresearch.ucsd.edu>.

STUDENT DIGEST

Enrollment and Academic Performance Statistics

Fall 2009

University of California, San Diego

William B. Armstrong, Ph.D.
Director

Heidi M. Carty, Ph.D.
Principal Research Analyst

Greg Martin
Programmer Analyst

Jason R. Thornton
Research Analyst

Student Research & Information
Student Affairs
University of California, San Diego
La Jolla, CA 92093-0088
<http://studentresearch.ucsd.edu>

■ Table of Contents

Total Campus Enrollment	4
Total Campus Population Summary	5
Total Undergraduate Enrollment	6
By Class Level	7
By Gender	8
By Ethnicity	9
By Major Field of Study	10
By Major Department	11
By College	12
Academic Profile: Undergraduates	13
Total Undergraduate Population Summary	14
By Class Level	15
By Major Field of Study	16
New Students	17
New Student Enrollments	18
First-Time Freshmen	19
Applicants, Admits & Registered	20
By Gender	21
By Ethnicity	22
By Major Field of Study	23
By Major Department at Time of Admission	24
By College & Home Location	25
By 1st Generation College Status & Income Group & Athletic Status	26
Major Feeder High Schools	27
High School Grades and SAT Scores	28
Indicators of Academic Preparation	29
High School GPA by Gender, Ethnicity, Major Field of Study, Home Location, 1st Generation College Status & Income Group	30
SAT I Scores by Gender, Ethnicity, Major Field of Study, Home Location, 1st Generation College Status & Income Group	31
UCSD/UC Systemwide Comparison	32
New Transfer Students	33
Applicants, Admits & Registered	34
By Gender	35
By Ethnicity	36
By Major Field of Study	37
By Transfer Institution & Home Location	38
By Undergraduate College	39
By 1st Generation College Status & Income Group & Athletic Status	40
Major Feeder Transfer Institutions	41
New Transfer Student Academic Preparation	42
Indicators of Academic Preparation	43
Degrees Conferred	44
All Degree Types	45
Bachelor Degrees by Gender	46
Bachelor Degrees by Ethnicity	47
Bachelor Degrees by Major Field of Study & College	48
Bachelor Degrees by First Generation College Status & Income	49
Time-to-Degree/Academic Performance for Students Who Entered UCSD from High School	50
Time-to-Degree/Academic Performance for Students Who Entered UCSD from a Two-Year Community College	51
Appendix: Undergraduate Major Fields of Study/ Academic Departments	52



**Total
Campus
Enrollment**

■ TOTAL CAMPUS ENROLLMENT

Over twenty-nine thousand students enrolled at UCSD in fall 2009 - showing an increase of 46% over the past decade. UCSD enrolled 23,143 undergraduate students, and 5,967 graduate and medical students.

Table 1.

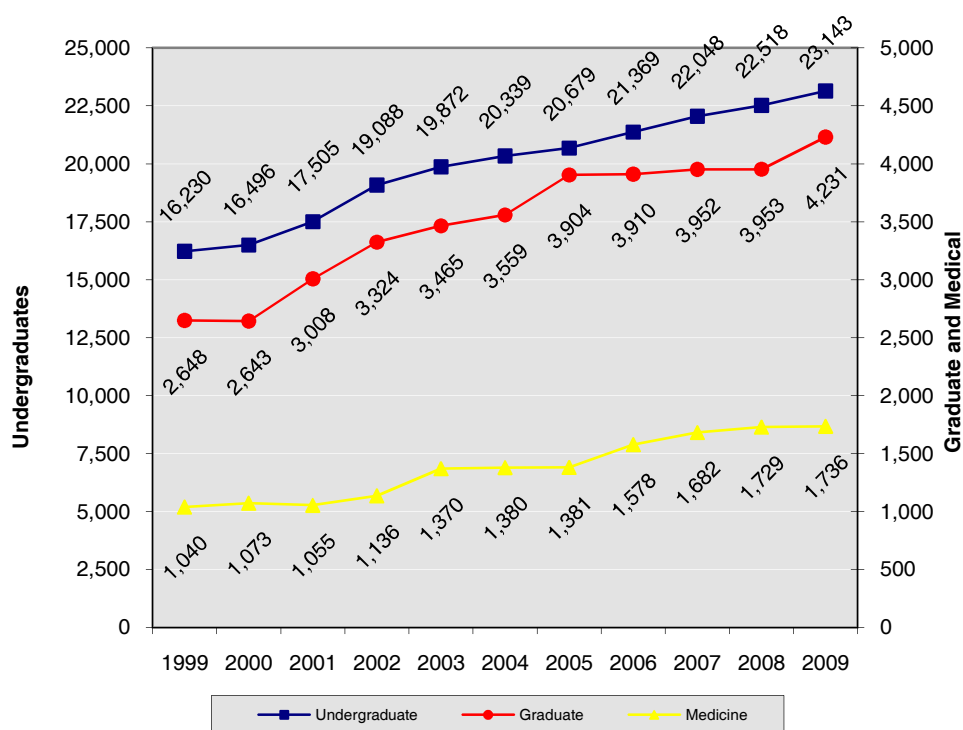
Total Campus Enrollment: The Past Decade Fall Quarter

UCSD Enrollment	1999	2004	2005	2006	2007	2008	2009	10 Year Δ
• Undergraduate	16,230	20,339	20,679	21,369	22,048	22,518	23,143	+43%
• Graduate *	2,648	3,559	3,904	3,910	3,952	3,953	4,231	+60%
• Medicine/Pharmacy	1,040	1,380	1,381	1,578	1,682	1,729	1,736	+67%
Total Campus Enrollment	19,918	25,278	25,964	26,857	27,682	28,200	29,110	+46%

* includes Teacher Education Program.

Figure 1.

Total Campus Enrollment: The Past Decade Fall Quarter





**Total
Undergraduate
Enrollment**

■ Undergraduate Enrollment

Undergraduate enrollments have increased by 43% over the past decade. The majority of undergraduate students (67%) at UCSD are upper division.

Table 2.

Undergraduate Enrollment by Class Level Fall Quarter

The Undergraduates	1999	2004	2005	2006	2007	2008	2009	10 Year Δ
• Lower Division	6,811 42%	7,581 37%	7,551 37%	8,175 38%	8,572 39%	7,995 36%	7,558 33%	+11%
Freshman	3,651 22%	3,954 19%	3,917 19%	4,535 21%	4,179 19%	4,084 18%	3,578 15%	-2%
Sophomore	3,160 19%	3,627 18%	3,634 18%	3,640 17%	4,393 20%	3,911 17%	3,980 17%	+26%
• Upper Division	9,419 58%	12,758 63%	13,128 63%	13,194 62%	13,476 61%	14,523 64%	15,585 67%	+65%
Junior	4,319 27%	5,560 27%	5,733 28%	5,659 26%	5,827 26%	6,570 29%	6,441 28%	+49%
Senior	5,100 31%	7,198 35%	7,395 36%	7,535 35%	7,649 35%	7,953 35%	9,144 40%	+79%
Total UG Enrollment	16,230	20,339	20,679	21,369	22,048	22,518	23,143	+43%

Figure 2.

Total Undergraduate Enrollment Trends by Class Level Fall Quarter

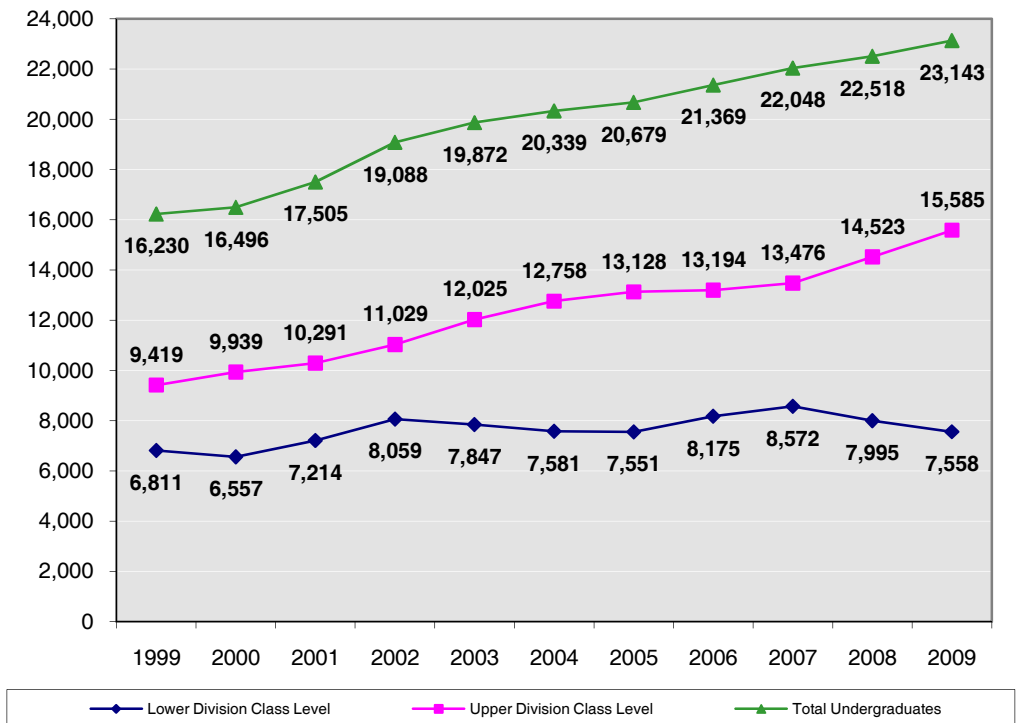


Table 3.

Undergraduates by Gender Fall Quarter

Gender	1999	2004	2005	2006	2007	2008	2009	10 Year Δ
• Female	8,471 52%	10,606 52%	10,835 52%	11,164 52%	11,587 53%	11,743 52%	12,004 52%	+42%
• Male	7,759 48%	9,733 48%	9,844 48%	10,205 48%	10,461 47%	10,775 48%	11,139 48%	+44%
Total UG Enrollment	16,230	20,339	20,679	21,369	22,048	22,518	23,143	+43%

Women continue to outnumber men by approximately four percent.

Figure 3.

Undergraduate Enrollment by Gender Fall Quarter

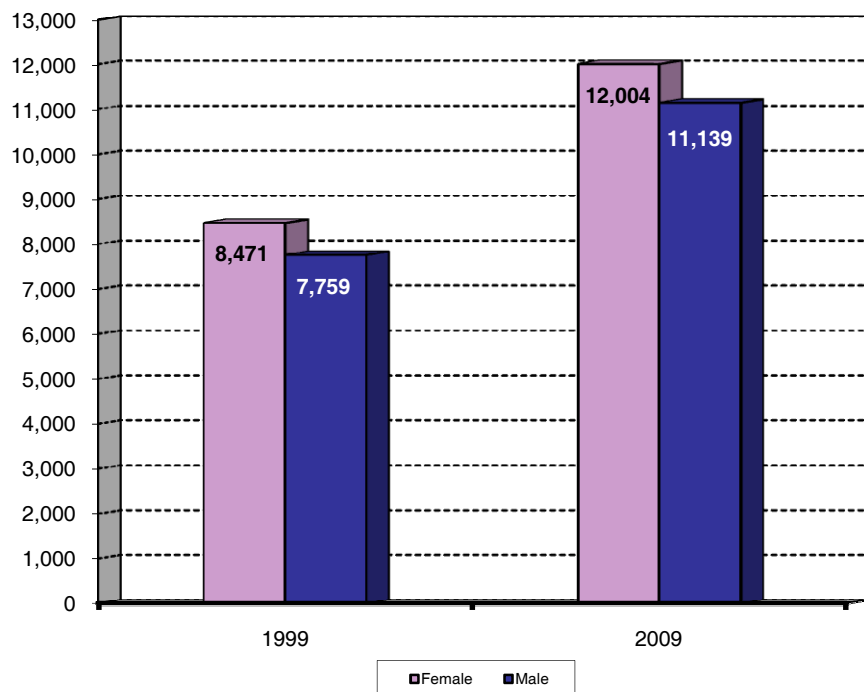


Table 4.

Undergraduates by Ethnicity Fall Quarter

Ethnicity	1999	2004	2005	2006	2007	2008	2009	10 Year Δ
• African-American	257 2%	273 1%	282 1%	276 1%	326 1%	340 2%	368 2%	+43%
• Asian	4,802 30%	7,221 36%	7,580 37%	8,287 39%	9,072 41%	9,835 44%	10,248 44%	+113%
• Mexican-American	1,226 8%	1,655 8%	1,720 8%	1,844 9%	1,997 9%	2,159 10%	2,344 10%	+91%
• Filipino	869 5%	1,017 5%	1,051 5%	1,058 5%	1,065 5%	1,052 5%	1,035 4%	+19%
• Latino	350 2%	481 2%	520 3%	567 3%	621 3%	626 3%	667 3%	+91%
• Native-American	119 1%	85 0%	89 0%	99 0%	91 0%	90 0%	92 0%	-23%
• Caucasian	6,403 39%	6,855 34%	6,625 32%	6,557 31%	6,274 28%	6,028 27%	5,986 26%	-7%
• Other/Undeclared	2,204 14%	2,752 14%	2,812 14%	2,681 13%	2,602 12%	2,388 11%	2,403 10%	+9%
Total UG Enrollment	16,230	20,339	20,679	21,369	22,048	22,518	23,143	+43%

The proportion of Asian and Mexican-American students continues to rise while the proportion of Caucasian students continues to decrease.

Figure 4.

Undergraduate Enrollment by Ethnicity Fall Quarter

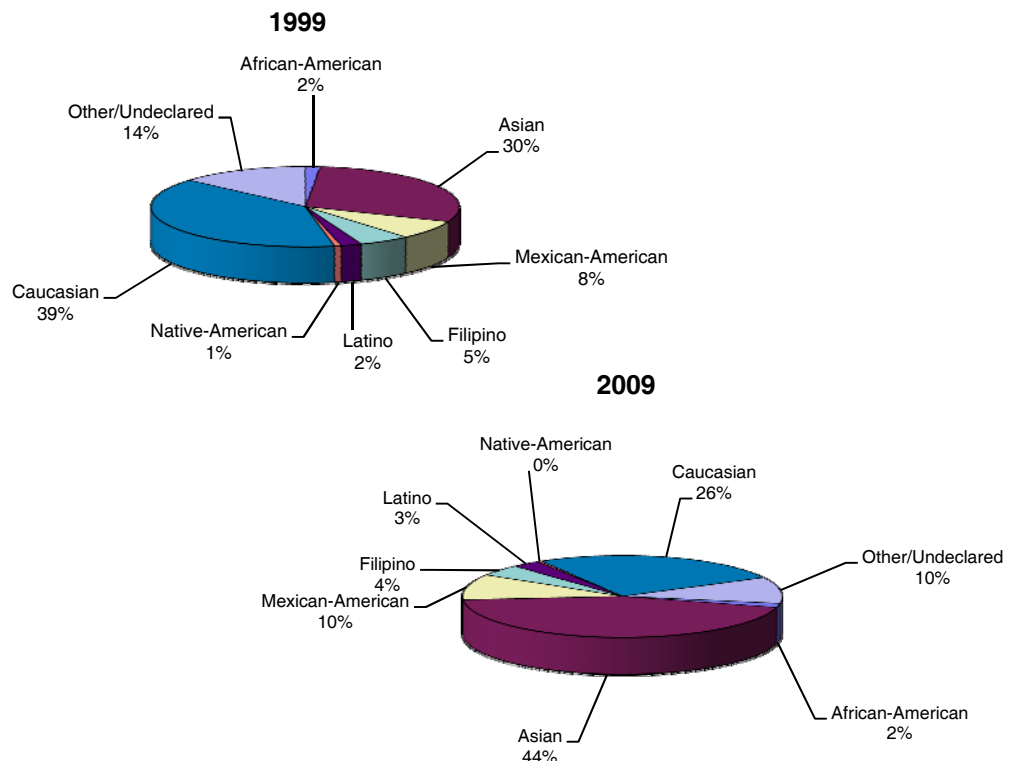


Table 5.

Undergraduates by Major Field of Study Fall Quarter

Major Field of Study	1999	2004	2005	2006	2007	2008	2009	10 Year Δ
• Arts	695 4%	945 5%	889 4%	826 4%	773 4%	808 4%	779 3%	+12%
• Humanities	803 5%	905 4%	902 4%	936 4%	922 4%	858 4%	831 4%	+3%
• Engineering	3,136 19%	4,273 21%	4,035 20%	3,820 18%	3,717 17%	3,861 17%	4,083 18%	+30%
• Science/Math	1,088 7%	1,576 8%	1,713 8%	1,935 9%	2,041 9%	1,873 8%	1,778 8%	+63%
• Biology	3,681 23%	3,368 17%	3,809 18%	4,273 20%	4,776 22%	5,294 24%	5,768 25%	+57%
• Social Science	5,067 31%	6,928 34%	7,372 36%	7,610 36%	7,856 36%	8,395 37%	8,725 38%	+72%
• Undec./Special	1,760 11%	2,344 12%	1,959 9%	1,969 9%	1,963 9%	1,429 6%	1,179 5%	-33%
Total UG Enrollment	16,230	20,339	20,679	21,369	22,048	22,518	23,143	+43%

The social sciences continue to be the most popular undergraduate field of study at UCSD, followed by biology and then engineering.

Figure 5.

Undergraduate Enrollment by Major Field of Study Fall Quarter

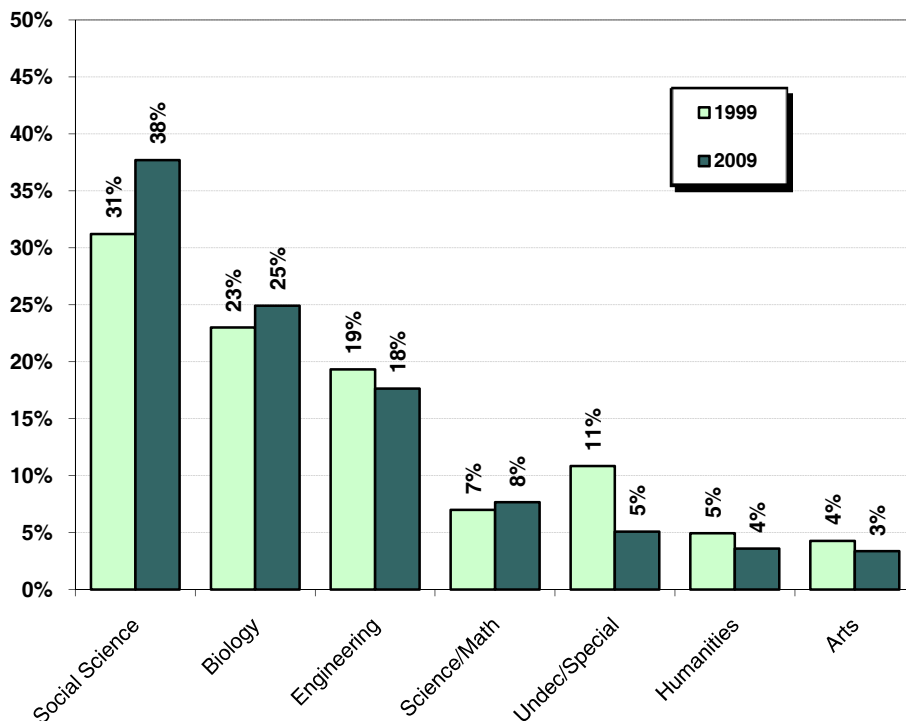


Table 6.

Undergraduates by Major Department **Fall Quarter**
Ten Most Populous Departments

1999			2009		
Major Department	n	%	Major Department	n	%
Biology	3,681	22.7%	Biology	5,768	24.9%
Economics	1,189	7.3%	Economics	2,486	10.7%
Computer Science & Eng. (CSE)	1,063	6.5%	Psychology	1,474	6.4%
Psychology	982	6.1%	Political Science	1,261	5.4%
Electrical & Computer Eng. (ECE)	837	5.2%	Mechanical & Aerospace Eng.	1,161	5.0%
Political Science	812	5.0%	Chemistry	1,039	4.5%
Communications	734	4.5%	Communications	897	3.9%
Applied Mechanics & Eng. (AMES)	643	4.0%	International Studies	876	3.8%
Bioengineering*	561	3.5%	Bioengineering	827	3.6%
Chemistry & Biochemistry*	521	3.2%	Computer Science & Eng. (CSE)	789	3.4%
Other Departments	3,449	21.3%	Other Departments	5,544	24.0%
Undeclared Majors	1,758	10.8%	Undeclared Majors	1,021	4.4%
TOTAL	16,230	100.0%	TOTAL	23,143	100.0%

Similar to 1999, the most popular undergraduate major at UCSD in 2009 is biology. Economics is the second most popular undergraduate major, followed by psychology.

Figure 6.

Ten Most Populous Departments **Fall Quarter**

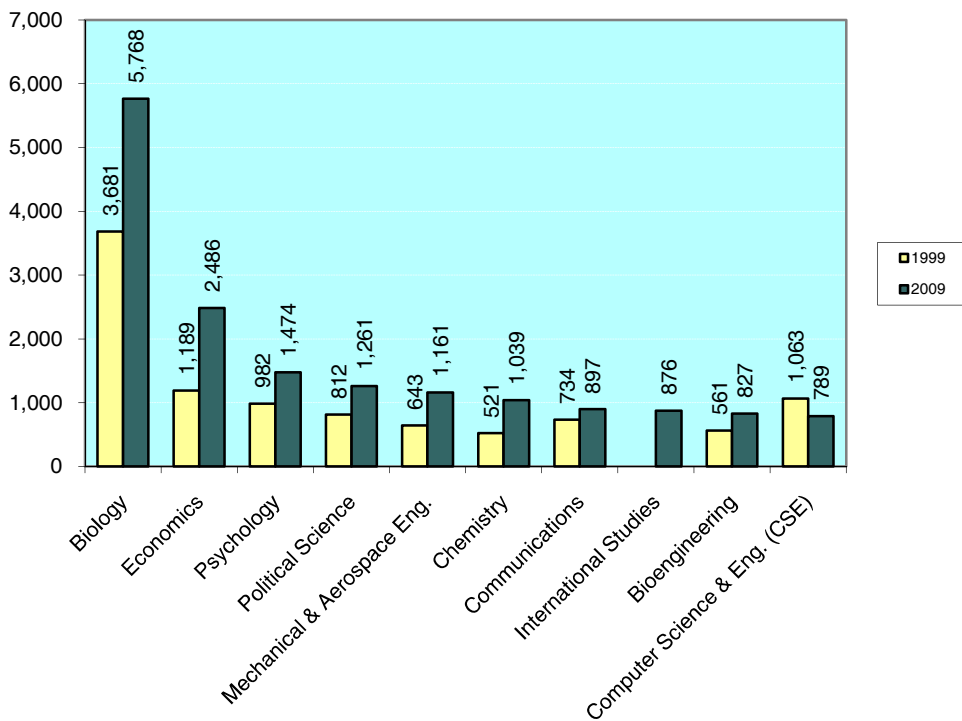


Table 7.

Undergraduates by College Fall Quarter

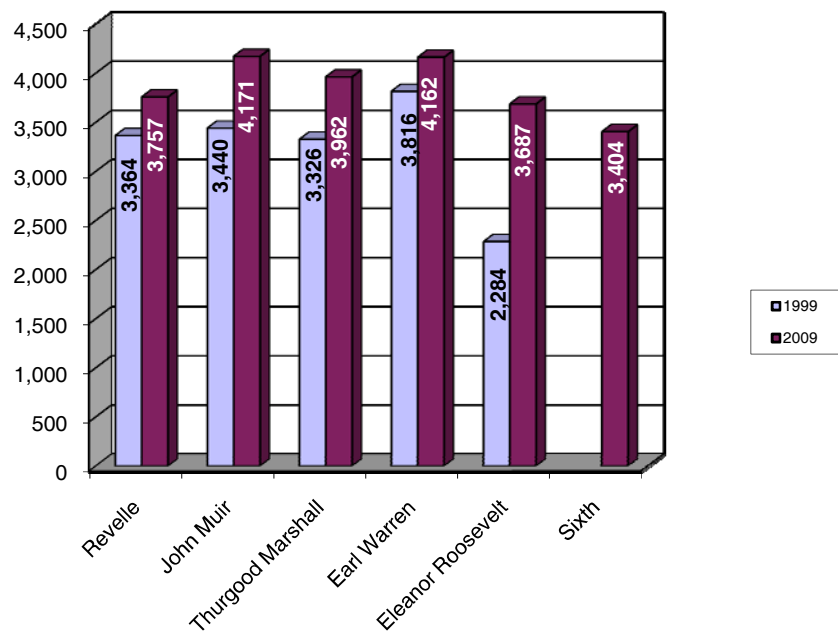
College	1999	2004	2005	2006	2007	2008	2009	10 Year Δ
• Revelle	3,364 21%	3,647 18%	3,690 18%	3,627 17%	3,792 17%	3,753 17%	3,757 16%	+12%
• John Muir	3,440 22%	3,797 19%	3,861 19%	4,088 19%	4,194 19%	4,164 18%	4,171 18%	+21%
• Thurgood Marshall	3,326 21%	3,813 19%	3,736 18%	3,769 18%	3,725 17%	3,905 17%	3,962 17%	+19%
• Earl Warren	3,816 24%	4,565 22%	4,331 21%	4,151 19%	4,132 19%	4,031 18%	4,162 18%	+9%
• Eleanor Roosevelt	2,284 14%	3,370 17%	3,337 16%	3,376 16%	3,422 16%	3,564 16%	3,687 16%	+61%
• Sixth*	NA NA	1,147 6%	1,724 8%	2,358 11%	2,783 13%	3,101 14%	3,404 15%	NA
Total UG Enrollment	15,837	20,339	20,679	21,369	22,048	22,518	23,143	

* Note: Sixth College enrolled its first class of undergraduates in 2002.

Currently, Earl Warren and John Muir enroll the largest number of undergraduate students, followed by Thurgood Marshall and Revelle colleges.

Figure 7.

Undergraduate Enrollments by College Fall Quarter





**Academic
Profile:
Undergraduates**

■ Academic Profile: Total Undergraduate Population

Table 8.

Academic Profile Summary Fall Quarter

Undergraduates	1999	2004	2005	2006	2007	2008	2009
• UCSD GPA	2.98	3.03	3.02	3.01	3.01	3.02	3.03
GPA \geq 3.5	16.7%	19.0%	18.6%	18.3%	18.1%	18.8%	19.6%
3.0 \leq GPA < 3.5	34.0%	36.8%	36.3%	35.0%	35.5%	35.2%	35.3%
2.5 \leq GPA < 3.0	31.4%	29.2%	29.7%	30.2%	30.2%	30.1%	29.6%
2.0 \leq GPA < 2.5	14.9%	12.7%	12.8%	13.8%	13.6%	13.4%	13.2%
GPA < 2.0	3.0%	2.4%	2.6%	2.7%	2.5%	2.5%	2.3%

The mean grade point average (GPA) for all undergraduates at UCSD in 2009 is 3.03 (B); approximately 20% earn a GPA of 3.50 (B+) or higher.

Figure 8.

Proportion of Student Body within GPA Ranges Fall Quarter

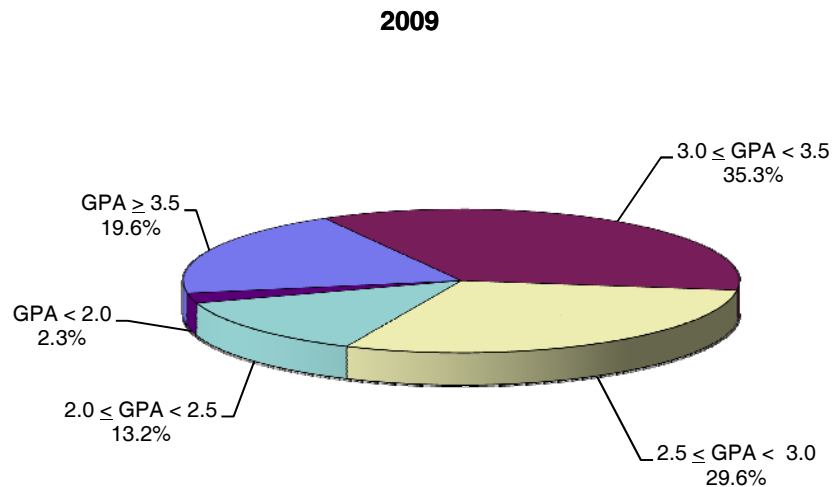


Table 9.

Academic Profile by Class Level **Fall Quarter**

Undergraduates	1999	2004	2005	2006	2007	2008	2009
• Freshman*							
Freshman GPA	2.92	2.88	2.90	2.89	2.92	2.87	2.90
GPA ≥ 3.5	20.9%	20.6%	20.0%	19.5%	20.3%	19.0%	21.2%
$3.0 \leq \text{GPA} < 3.5$	32.7%	30.7%	31.7%	32.0%	32.2%	31.2%	30.4%
$2.5 \leq \text{GPA} < 3.0$	22.9%	23.9%	25.2%	23.8%	25.7%	24.0%	24.2%
$2.0 \leq \text{GPA} < 2.5$	15.3%	14.1%	15.0%	16.2%	13.8%	15.6%	14.6%
GPA < 2.0	8.2%	10.6%	8.1%	8.6%	8.1%	10.3%	9.6%
• Sophomore							
Sophomore GPA	2.98	2.99	2.98	2.97	3.00	3.00	3.00
GPA ≥ 3.5	17.0%	15.7%	15.7%	15.1%	16.6%	16.4%	17.7%
$3.0 \leq \text{GPA} < 3.5$	32.9%	36.2%	35.3%	36.2%	35.2%	34.8%	34.9%
$2.5 \leq \text{GPA} < 3.0$	32.2%	31.2%	31.9%	30.5%	32.0%	32.5%	30.3%
$2.0 \leq \text{GPA} < 2.5$	14.9%	14.3%	14.2%	15.6%	14.2%	14.4%	14.7%
GPA < 2.0	3.1%	2.7%	2.9%	2.7%	1.9%	1.9%	2.4%
• Junior							
Junior GPA	2.99	3.05	3.01	3.00	3.00	3.02	3.02
GPA ≥ 3.5	16.3%	19.8%	17.6%	18.1%	18.3%	19.7%	19.1%
$3.0 \leq \text{GPA} < 3.5$	35.9%	37.7%	36.6%	34.4%	35.8%	34.8%	34.8%
$2.5 \leq \text{GPA} < 3.0$	31.6%	28.5%	30.4%	31.3%	28.9%	30.3%	30.5%
$2.0 \leq \text{GPA} < 2.5$	13.3%	12.0%	12.6%	12.6%	13.4%	12.2%	12.8%
GPA < 2.0	2.9%	2.0%	2.8%	3.6%	3.5%	2.9%	2.7%
• Senior							
Senior GPA	3.01	3.07	3.08	3.05	3.05	3.05	3.07
GPA ≥ 3.5	17.8%	20.6%	21.4%	20.3%	19.7%	19.7%	21.0%
$3.0 \leq \text{GPA} < 3.5$	35.2%	37.9%	37.8%	35.9%	36.3%	36.6%	36.4%
$2.5 \leq \text{GPA} < 3.0$	30.7%	28.5%	28.2%	29.3%	29.9%	29.0%	28.8%
$2.0 \leq \text{GPA} < 2.5$	14.4%	11.6%	11.0%	12.9%	12.4%	12.8%	12.3%
GPA < 2.0	1.9%	1.5%	1.5%	1.6%	1.7%	1.9%	1.5%
Undergraduate GPA	2.98	3.03	3.02	3.01	3.01	3.02	3.03

There is a positive relationship between student class level and grade point average; as students advance in standing, they tend to earn a higher grade point average.

* Note: Freshman GPA data reflect grades for Winter quarter of first year enrolled.

Table 10.

Academic Profile by Major Field of Study

Fall Quarter

Undergraduates	1999	2004	2005	2006	2007	2008	2009
• Arts							
Arts GPA	3.06	3.19	3.20	3.22	3.19	3.22	3.20
GPA ≥ 3.5	18.5%	24.5%	25.6%	28.0%	28.6%	30.0%	29.0%
$3.0 \leq$ GPA < 3.5	39.8%	45.8%	46.9%	45.0%	39.8%	41.7%	40.7%
$2.5 \leq$ GPA < 3.0	29.8%	23.1%	21.4%	21.4%	23.4%	22.3%	22.0%
$2.0 \leq$ GPA < 2.5	9.8%	6.0%	4.6%	4.3%	7.5%	5.3%	7.5%
GPA < 2.0	2.1%	0.6%	1.5%	1.4%	0.6%	0.6%	0.8%
• Humanities							
Humanities GPA	3.10	3.15	3.12	3.09	3.13	3.14	3.17
GPA ≥ 3.5	23.7%	26.0%	24.0%	21.5%	25.3%	27.3%	28.1%
$3.0 \leq$ GPA < 3.5	37.8%	41.5%	40.0%	40.6%	40.4%	39.6%	40.5%
$2.5 \leq$ GPA < 3.0	25.1%	22.9%	24.7%	24.6%	22.3%	22.1%	22.3%
$2.0 \leq$ GPA < 2.5	10.8%	7.6%	10.0%	10.5%	9.4%	9.6%	6.8%
GPA < 2.0	2.6%	2.1%	1.2%	2.8%	2.6%	1.5%	2.3%
• Engineering							
Engineering GPA	2.97	3.00	3.00	3.00	3.00	3.00	3.00
GPA ≥ 3.5	16.1%	18.2%	18.7%	18.0%	18.0%	18.8%	18.9%
$3.0 \leq$ GPA < 3.5	31.8%	32.3%	32.5%	33.1%	32.8%	32.7%	31.2%
$2.5 \leq$ GPA < 3.0	34.4%	32.8%	31.7%	31.6%	31.5%	31.9%	32.9%
$2.0 \leq$ GPA < 2.5	15.1%	14.5%	14.9%	14.8%	15.3%	14.3%	14.8%
GPA < 2.0	2.5%	2.1%	2.2%	2.5%	2.4%	2.4%	2.1%
• Science/Math							
Science/Math GPA	2.93	2.96	2.91	2.94	2.95	2.98	3.01
GPA ≥ 3.5	18.3%	17.6%	15.9%	15.9%	16.6%	17.3%	20.1%
$3.0 \leq$ GPA < 3.5	26.3%	33.5%	31.3%	31.9%	32.9%	33.0%	32.0%
$2.5 \leq$ GPA < 3.0	33.4%	27.5%	31.8%	30.1%	31.0%	30.9%	30.1%
$2.0 \leq$ GPA < 2.5	18.4%	18.8%	15.7%	18.8%	16.5%	16.1%	15.1%
GPA < 2.0	3.7%	2.6%	5.3%	3.3%	2.9%	2.7%	2.7%
• Biology							
Biology GPA	2.99	3.05	3.06	3.05	3.04	3.04	3.03
GPA ≥ 3.5	18.6%	20.5%	20.5%	20.0%	18.7%	18.5%	18.6%
$3.0 \leq$ GPA < 3.5	32.0%	35.6%	35.5%	34.4%	35.9%	36.1%	36.1%
$2.5 \leq$ GPA < 3.0	31.6%	31.1%	30.9%	33.2%	32.7%	31.8%	31.3%
$2.0 \leq$ GPA < 2.5	14.9%	11.1%	11.0%	10.8%	10.7%	11.9%	12.1%
GPA < 2.0	2.9%	1.7%	2.1%	1.6%	2.0%	1.7%	1.9%
• Social Science							
Social Science GPA	2.97	3.03	3.02	2.99	3.00	2.99	3.02
GPA ≥ 3.5	14.3%	18.0%	17.6%	16.7%	17.0%	17.7%	19.0%
$3.0 \leq$ GPA < 3.5	37.4%	39.0%	38.3%	35.8%	36.3%	35.5%	36.1%
$2.5 \leq$ GPA < 3.0	30.4%	28.6%	28.9%	29.7%	29.2%	29.5%	28.4%
$2.0 \leq$ GPA < 2.5	14.9%	11.8%	12.7%	14.7%	14.7%	14.2%	14.1%
GPA < 2.0	2.9%	2.5%	2.5%	3.1%	2.8%	3.1%	2.5%
Undergraduate GPA	2.98	3.03	3.02	3.01	3.01	3.02	3.03

Grade point averages vary by major field of study; the highest average GPAs are generally associated with arts and humanities majors.



**New
Students**

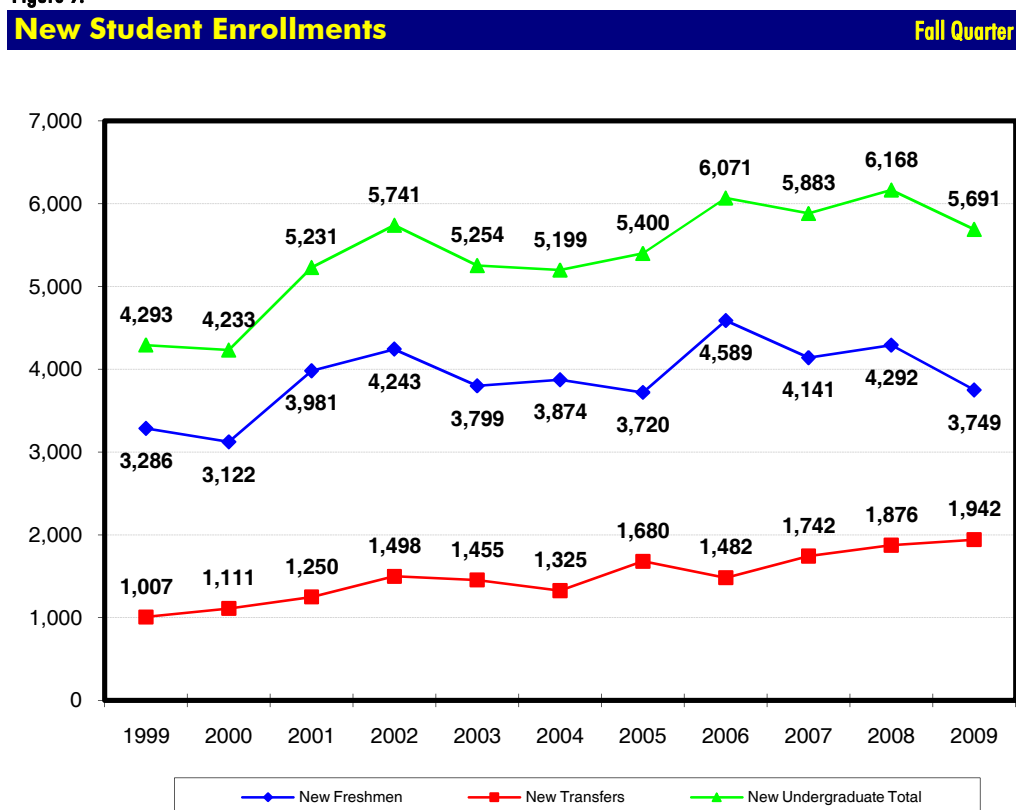
■ New Students: The Past Decade

New student enrollments have increased from 4,293 in 1999 to 5,691 in 2009, representing an overall increase of 33%. Of the new student enrollment, 66% are first-time freshmen and 34% are transfer students, representing the largest cohort of incoming transfer students to date.

Table 11.

New Student Enrollments								Fall Quarter
New Students	1999	2004	2005	2006	2007	2008	2009	10 Year Δ
• First-Time Freshmen	3,286 77%	3,874 75%	3,720 69%	4,589 76%	4,141 70%	4,292 70%	3,749 66%	+14%
• New Transfers	1,007 23%	1,325 25%	1,680 31%	1,482 24%	1,742 30%	1,876 30%	1,942 34%	+93%
New Student Total	4,293	5,199	5,400	6,071	5,883	6,168	5,691	+33%

Figure 9.





**First-Time
Freshmen**

■ First-Time Freshmen

Over forty-seven thousand high school students applied for admission to UCSD for fall of 2009. Of these students, 38% were admitted. A total of 3,749 of the admitted students registered for enrollment, showing a yield of 21%.

Table 12.

Applicants, Admits & Registered Fall Quarter

First-Time Freshmen	1999	2004	2005	2006	2007	2008	2009	10 Year Δ
• Applicants	32,547	41,330	40,518	43,586	45,073	47,365	47,046	+45%
• Admits	13,251	17,269	17,891	21,345	19,178	19,717	17,679	+33%
Admit/App. Rate	41%	42%	44%	49%	43%	42%	38%	
• Registered	3,286	3,874	3,720	4,589	4,141	4,292	3,749	+14%
Reg./Admit Rate	25%	22%	21%	21%	22%	22%	21%	

Figure 10.

Applicants, Admits & Registered Fall Quarter

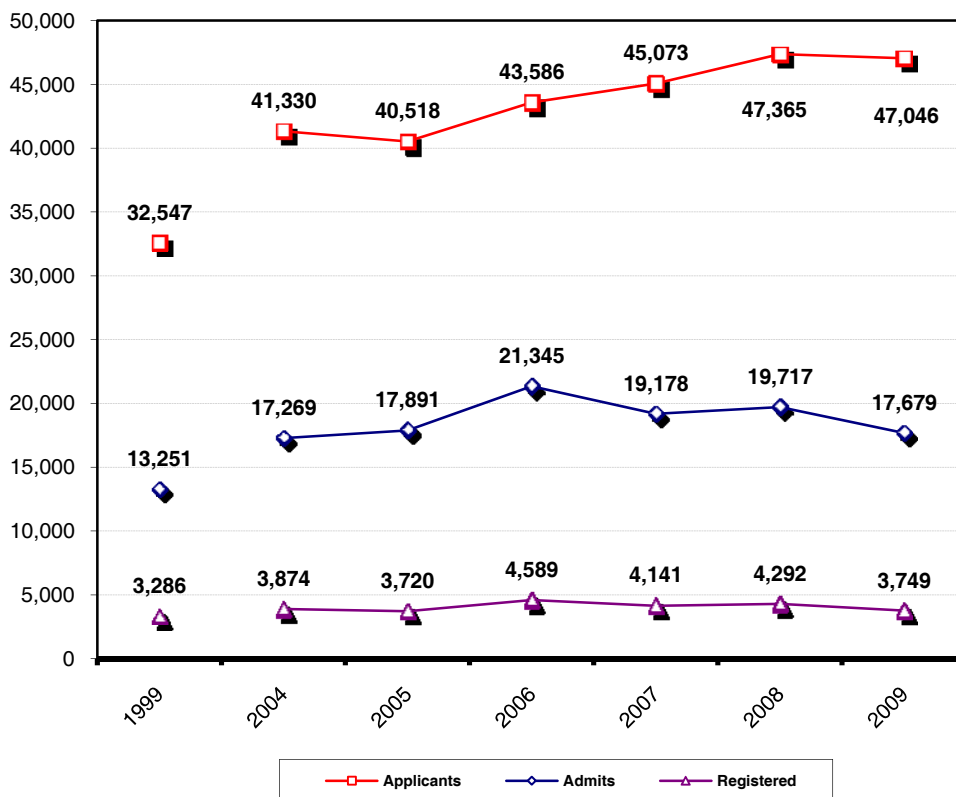


Table 13.

First-Time Freshmen by Gender Fall Quarter

Gender	1999	2004	2005	2006	2007	2008	2009	10 Year Δ
• Female	1,793 55%	2,190 57%	2,113 57%	2,558 56%	2,303 56%	2,399 56%	2,054 55%	+15%
• Male	1,493 45%	1,684 43%	1,607 43%	2,031 44%	1,838 44%	1,893 44%	1,695 45%	+14%
Total	3,286	3,874	3,720	4,589	4,141	4,292	3,749	+14%

At 55%, women continue to represent the majority of first-time freshmen at UCSD.

Figure 11.

First-Time Freshmen by Gender Fall Quarter

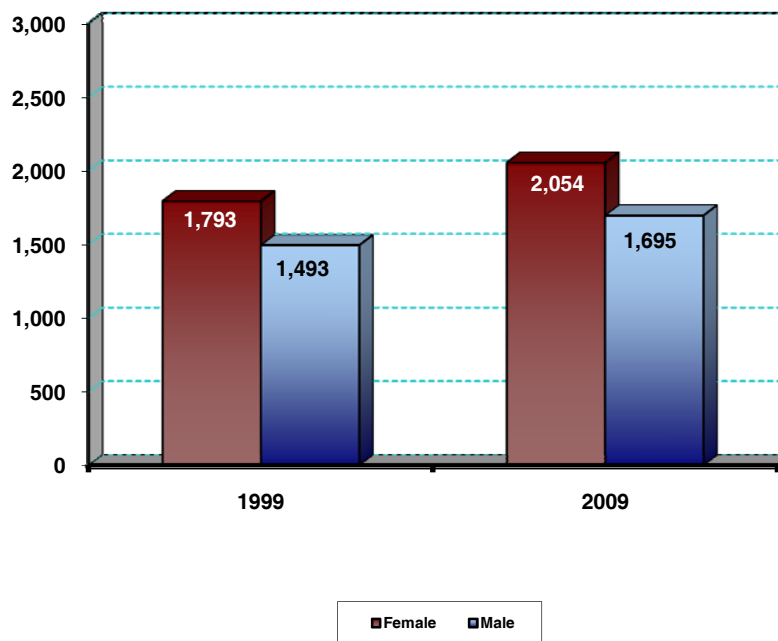


Table 14.

First-Time Freshmen by Ethnicity Fall Quarter

Ethnicity	1999	2004	2005	2006	2007	2008	2009	10 Year Δ
• African-American	33 1%	57 1%	43 1%	44 1%	72 2%	52 1%	46 1%	+39%
• Asian	1,101 34%	1,519 39%	1,600 43%	2,080 45%	1,945 47%	2,106 49%	1,826 49%	+66%
• Mexican-American	227 7%	355 9%	321 9%	388 8%	431 10%	441 10%	454 12%	+100%
• Filipino	140 4%	216 6%	201 5%	221 5%	183 4%	180 4%	136 4%	-3%
• Latino	60 2%	91 2%	111 3%	122 3%	126 3%	105 2%	108 3%	+80%
• Native-American	12 0%	15 0%	18 0%	22 0%	9 0%	15 0%	11 0%	-8%
• Caucasian	1,328 40%	1,163 30%	1,083 29%	1,283 28%	989 24%	1,009 24%	816 22%	-39%
• Other/Missing	385 12%	458 12%	343 9%	429 9%	386 9%	384 9%	352 9%	-9%
Total	3,286	3,874	3,720	4,589	4,141	4,292	3,749	+14%

The proportion of Asian-American and Mexican-American incoming freshmen continues to rise, while the proportion of Caucasian freshmen continues to decrease.

Figure 12.

First-Time Freshmen by Ethnicity Fall Quarter

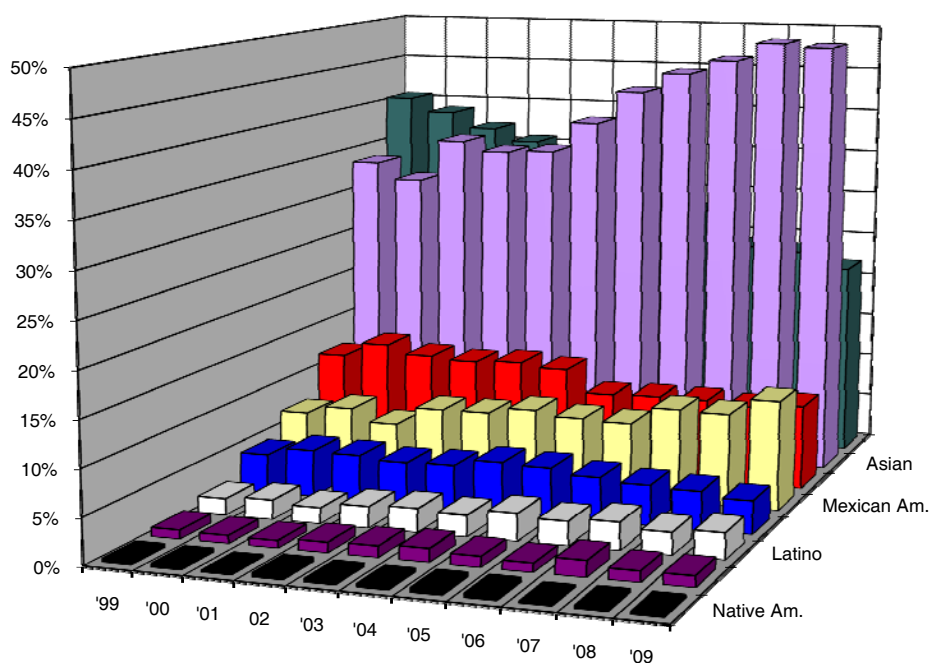


Table 15.

First-Time Freshmen by Major Field of Study Fall Quarter

Major Field of Study	1999	2004	2005	2006	2007	2008	2009	10 Year Δ
• Arts	65 2%	81 2%	82 2%	105 2%	76 2%	99 2%	74 2%	+14%
• Humanities	90 3%	119 3%	84 2%	151 3%	116 3%	115 3%	78 2%	-13%
• Engineering	660 20%	778 20%	766 21%	872 19%	720 17%	879 20%	856 23%	+30%
• Science/Math	211 6%	342 9%	370 10%	465 10%	462 11%	393 9%	463 12%	+119%
• Biology	629 19%	634 16%	616 17%	807 18%	851 21%	926 22%	625 17%	-1%
• Social Science	630 19%	741 19%	791 21%	1,024 22%	900 22%	986 23%	862 23%	+37%
• Undeclared/Missing/ Special	1,001 30%	1,179 30%	1,011 27%	1,165 25%	1,016 25%	894 21%	791 21%	-21%
Total	3,286	3,874	3,720	4,589	4,141	4,292	3,749	+14%

The most popular declared field of study for first-time freshmen is social science, followed closely by engineering. Approximately, 21% of new freshmen are considered undeclared upon admission.

Figure 13.

First-Time Freshmen by Major Field of Study Fall Quarter

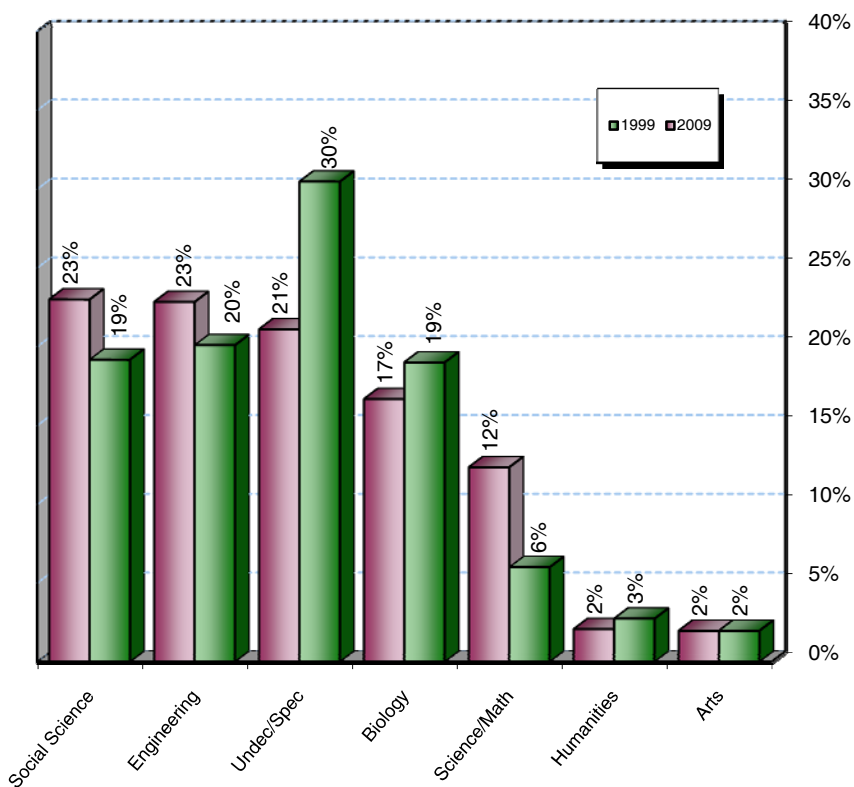


Table 16.

**First-Time Freshmen
by Major Department at Time of Admission** **Fall Quarter**

Similar to 1999, biology is the most popular declared major among new freshmen. Approximately 17% of all new freshmen report majoring in biology.

1999			2009		
Major Department	n	%	Major Department	n	%
Biology	629	19.1%	Biology	625	16.7%
Electrical & Computer Eng. (ECE)	204	6.2%	Chemistry	327	8.7%
Bioengineering	165	5.0%	Bioengineering	239	6.4%
Applied Mechanics & Eng. (AMES)	159	4.8%	Mechanical & Aerospace Eng.	197	5.3%
Political Science	138	4.2%	Economics	194	5.2%
Economics	138	4.2%	Psychology	183	4.9%
Psychology	132	4.0%	Computer Science & Eng. (CSE)	163	4.3%
Computer Science & Eng. (CSE)	126	3.8%	Political Science	140	3.7%
Communications	100	3.0%	Electrical & Computer Eng. (ECE)	108	2.9%
Chemistry & Biochemistry	91	2.8%	International Studies	99	2.6%
Mathematics	56	1.7%	Structural Engineering	95	2.5%
Physics	55	1.7%	Communications	71	1.9%
Literature	53	1.6%	Mathematics	59	1.6%
History	32	1.0%	Chemical Engineering	54	1.4%
Visual Arts	30	0.9%	Cognitive Science	50	1.3%
Cognitive Science	28	0.9%	Literature	45	1.2%
Music	23	0.7%	Visual Arts	43	1.1%
Human Development	21	0.6%	Environmental Systems	41	1.1%
Sociology	19	0.6%	Sociology	35	0.9%
Anthropology	18	0.5%	Physics	32	0.9%
Theatre	12	0.4%	History	25	0.7%
Earth Sciences	9	0.3%	Anthropology	23	0.6%
Structural Engineering	6	0.2%	Human Development	20	0.5%
Philosophy	5	0.2%	Music	18	0.5%
Ethnic Studies	5	0.2%	Linguistics	13	0.3%
Subtotal	2,254	68.6%	Subtotal	2,899	77.3%
Other Majors	31	0.9%	Other Majors	59	1.6%
Undeclared Majors	1,001	30.5%	Undeclared Majors	791	21.1%
TOTAL	3,286	100.0%	TOTAL	3,749	100.0%

Table 17.

First-Time Freshmen by College								Fall Quarter
College	1999	2004	2005	2006	2007	2008	2009	10 Year Δ
• Revelle	795 24%	701 18%	756 20%	736 16%	798 19%	701 16%	642 17%	-19%
• John Muir	657 20%	646 17%	640 17%	962 21%	644 16%	801 19%	623 17%	-5%
• Thurgood Marshall	684 21%	670 17%	667 18%	769 17%	703 17%	774 18%	604 16%	-12%
• Earl Warren	570 17%	658 17%	582 16%	691 15%	659 16%	615 14%	706 19%	+24%
• Eleanor Roosevelt	580 18%	743 19%	608 16%	723 16%	663 16%	801 19%	603 16%	+4%
• Sixth	NA NA	456 12%	467 13%	708 15%	674 16%	600 14%	571 15%	NA
Total	3,286	3,874	3,720	4,589	4,141	4,292	3,749	+14%

Almost one-half (45%) of all first-time freshmen come to UCSD from the Los Angeles area. Approximately one-quarter (25%) are from the San Francisco area. Ninety-seven percent are from California.

Table 18.

First-Time Freshmen by Home Location								Fall Quarter
Home Location	1999	2004	2005	2006	2007	2008	2009	10 Year Δ
• San Diego	594 18%	628 16%	503 14%	591 13%	568 14%	554 13%	516 14%	-13%
• Los Angeles	1,398 43%	1,806 47%	1,736 47%	2,089 46%	1,902 46%	1,993 46%	1,695 45%	+21%
• San Francisco	650 20%	806 21%	820 22%	1,101 24%	950 23%	1,011 24%	938 25%	+44%
• Other CA	492 15%	439 11%	413 11%	477 10%	400 10%	384 9%	358 10%	-27%
• Out-of-State	125 4%	111 3%	156 4%	211 5%	169 4%	179 4%	123 3%	-2%
• International	27 1%	84 2%	92 2%	120 3%	152 4%	171 4%	119 3%	+341%
Total	3,286	3,874	3,720	4,589	4,141	4,292	3,749	+14%

Table 19.

First-Time Freshmen by 1st Generation College Status Fall Quarter

College Status	1999	2004	2005	2006	2007	2008	2009	10 Year Δ
• First Generation	773 24%	1,118 29%	1,037 28%	1,262 28%	1,383 33%	1,369 32%	1,261 34%	+63%
• Not First Generation	2,513 76%	2,756 71%	2,683 72%	3,327 72%	2,758 67%	2,923 68%	2,488 66%	-1%
Total	3,286	3,874	3,720	4,589	4,141	4,292	3,749	+14%

The majority (66%) of new freshmen have at least one parent who has graduated from a two-year junior college or four-year college/university.

Table 20.

First-Time Freshmen by Income Group Fall Quarter

Income	1999*	2004	2005	2006	2007	2008	2009	10 Year Δ
• High (≥\$98,401)	1,007 31%	796 21%	887 24%	1,234 27%	943 23%	1,138 27%	970 26%	-4%
• Medium High (\$65,601 - \$98,400)	518 16%	443 11%	468 13%	566 12%	439 11%	442 10%	376 10%	-27%
• Medium Low (\$32,801 - \$65,600)	597 18%	826 21%	792 21%	985 21%	904 22%	891 21%	774 21%	+30%
• Low (≤\$32,800)	601 18%	931 24%	854 23%	994 22%	1,129 27%	1,096 26%	1,063 28%	+77%
• Missing	563 17%	878 23%	719 19%	810 18%	726 18%	725 17%	566 15%	+1%
Total	3,286	3,874	3,720	4,589	4,141	4,292	3,749	+14%

* 1999 Income Categories:

- High = Income ≥ \$87,001
- Medium High = \$58,001-\$87,000
- Medium Low = \$29,001-\$58,000
- Low = Income ≤ \$29,000

Table 21.

First-Time Freshmen by Athletic Status Fall Quarter

College Status	1999	2004	2005	2006	2007	2008	2009*	10 Year Δ
• Athlete	NA NA	162 4%	159 4%	166 4%	149 4%	175 4%	NA NA	NA
• Non-Athlete	NA NA	3,712 96%	3,561 96%	4,423 96%	3,992 96%	4,117 96%	NA NA	NA
Total	3,286	3,874	3,720	4,141	4,141	4,292	3,749	+14%

* 2009 Athlete data not available until Winter Quarter 2010.

Approximately, 4% of first-time freshmen play UCSD athletics.


Table 22.

Major* Feeder High Schools for First-time Freshmen Fall Quarter

High School	City	Number from H.S. Registered at UCSD in Fall 2009	Percent of UCSD's Total 2009 Freshman Enrollment	Average H.S. GPA of Registered Freshmen	Average SAT I of Registered Freshmen	High School Quintile Rank
Mission San Jose High School	Fremont	62	1.7%	3.91	1405	First
Arcadia High School	Arcadia	59	1.6%	3.94	1346	First
Lowell High School	San Francisco	58	1.5%	3.89	1312	First
Lynbrook High School	San Jose	58	1.5%	4.00	1369	First
Monta Vista High School	Cupertino	48	1.3%	3.99	1387	First
Walnut High School	Walnut	41	1.1%	3.97	1324	First
Diamond Bar High School	Diamond Bar	39	1.0%	3.91	1313	First
Torrey Pines High School	San Diego	31	0.8%	4.10	1385	First
Troy High School	Fullerton	30	0.8%	3.77	1422	First
Davis Senior High School	Davis	25	0.7%	3.97	1319	First
Mark Keppel High School	Alhambra	23	0.6%	3.82	1293	First
Irvington High School	Fremont	23	0.6%	3.96	1365	First
Henry M. Gunn Senior High School	Palo Alto	23	0.6%	3.90	1385	First
Temple City High School	Temple City	23	0.6%	4.09	1295	First
Rancho Bernardo High School	San Diego	22	0.6%	4.02	1363	First
Mira Mesa High School	San Diego	22	0.6%	4.16	1212	Second
Westview High School	San Diego	22	0.6%	3.93	1301	First
Northwood High School	Irvine	21	0.6%	3.93	1350	First
Homestead High School	Cupertino	21	0.6%	4.06	1336	First
Cerritos High School	Cerritos	20	0.5%	3.87	1288	First
Crescenta Valley High School	La Crescenta	20	0.5%	3.86	1350	First
Foothill High School	Santa Ana	20	0.5%	4.16	1347	First
Palos Verdes Penn. High School	Rolling Hills	20	0.5%	3.98	1332	First
Mills High School	Millbrae	18	0.5%	3.91	1301	First
Mount Carmel High School	San Diego	18	0.5%	4.06	1364	First
Castro Valley High School	Castro Valley	17	0.5%	4.06	1257	First
Sunny Hills High School	Fullerton	17	0.5%	3.82	1354	First
University High School	Irvine	17	0.5%	4.02	1401	First
Rosemead High School	Rosemead	17	0.5%	3.81	1184	Fourth
Saratoga High School	Saratoga	17	0.5%	3.94	1348	First
Claremont High School	Claremont	16	0.4%	4.15	1288	First
Mira Costa High School	Manhattan Beach	16	0.4%	3.96	1333	First
Evergreen Valley High School	San Jose	16	0.4%	4.07	1386	First
Alhambra High School	Alhambra	15	0.4%	3.76	1263	Third
Esperanza High School	Anaheim	15	0.4%	3.95	1362	First
Monte Vista High School	Danville	15	0.4%	3.91	1338	First
Abraham Lincoln High School	Los Angeles	15	0.4%	3.74	1117	Fifth
Fairfax High School	Los Angeles	15	0.4%	3.77	1071	Fourth
North Hollywood High School	North Hollywood	15	0.4%	3.69	1180	Fourth
Scripps Ranch High School	San Diego	15	0.4%	4.05	1341	First
Santa Monica High School	Santa Monica	15	0.4%	4.03	1267	Second
Subtotal (Number of High Schools=41)		1,020	27.2%			
Other High Schools (Number of High Schools=921)		2,729	72.8%			
Total (Number of High Schools=962)		3,749	100.0%			

Mission San Jose High School in the San Jose area tops the list of major feeder schools for the fall 2009 freshman cohort.

* Fifteen or more students



**High School
Grades and
SAT Scores**

Academic Preparation: A Decade of Change

Academic preparation of incoming freshmen, as measured by high school GPA and SAT scores, have remained high over the past decade. The average SAT score in 2009 is 1257, and the average GPA is 3.96.

Table 23.

Freshman Cohort by HS GPA and SAT Score Averages Fall Quarter

First-Time Freshmen	1999	2004	2005	2006	2007	2008	2009
• HS GPA ¹	3.98	3.96	3.94	3.93	3.94	3.94	3.96
• SAT I (Verbal & Math)	1256	1242	1253	1243	1248	1252	1257

¹ GPAs may exceed 4.0 with credit given for honors courses.

² SAT I scores reflect the higher of ACT scores converted to SAT Scores.

Table 24.

Freshman Cohort by Academic Indicator Ranges Fall Quarter

High School GPA Range	Percentage in Range		SAT I Composite Score Range	Percentage in Range	
	1999	2009		1999	2009
• 4.0 - High	52%	53%	• 1500 - 1600	2%	4%
• 3.90 - 3.99	13%	14%	• 1300 - 1499	37%	40%
• 3.60 - 3.89	28%	26%	• 1200 - 1299	31%	26%
• 3.30 - 3.59	7%	7%	• 1000 - 1199	25%	25%
• Low - 3.29	0%	1%	• Low - 999	5%	6%
Total	100%	100%	Total	100%	100%

Number of Honors Courses: 10th & 11th Grade	Percentage in Range		Number of College Preparatory (A-G) Courses*	Percentage in Range	
	1999	2009		1999	2009
• More than 8	44%	3%	• More than 50	11%	27%
• 7 - 8	20%	5%	• 46 - 50	22%	35%
• 5 - 6	15%	15%	• 41 - 45	37%	29%
• 1 - 4	17%	54%	• 36 - 40	25%	9%
• 0	4%	22%	• 30 - 35	5%	0%
Total	100%	100%	Total	100%	100%

* The G requirement went into effect in 2003.

Figure 14.

Academic Preparation: 1999-2009 Comparison Fall Quarter

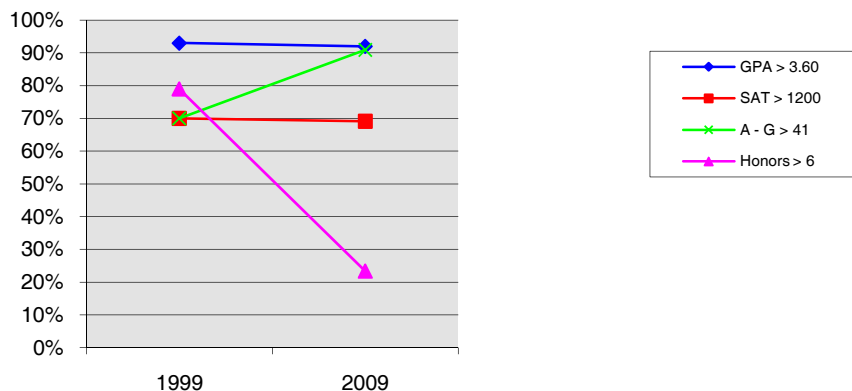


Table 25.

High School GPA¹ by Gender, Ethnicity, Major Field of Study, Home Location, 1st Generation College Status & Income Fall Quarter

First-Time Freshmen GPA	1999 ² Average	2004 Average	2005 Average	2006 Average	2007 Average	2008 Average	2009 Average
• Gender							
Female	4.00	3.98	3.95	3.94	3.95	3.95	3.97
Male	3.94	3.93	3.91	3.91	3.91	3.93	3.95
• Ethnicity							
African-American	3.93	3.90	3.88	3.73	3.85	3.88	3.88
Asian	3.94	3.92	3.89	3.89	3.91	3.90	3.95
Mexican-American	3.96	3.89	3.88	3.86	3.86	3.88	3.88
Filipino	4.07	4.02	4.03	4.02	4.02	4.01	4.04
Latino	3.94	3.95	3.90	3.85	3.88	3.90	3.94
Native-American	3.95	4.02	4.04	3.88	4.05	3.88	4.03
Caucasian	4.01	4.02	4.00	3.99	4.02	4.03	4.03
• Major Field of Study							
Arts	3.96	3.91	3.87	3.91	3.95	3.87	3.92
Humanities	3.91	3.91	3.87	3.87	3.95	3.97	3.91
Engineering	4.00	3.99	3.97	3.99	4.00	3.98	4.00
Science/Math	4.02	4.00	3.97	3.98	3.94	3.96	4.00
Biology	4.03	4.01	3.99	3.96	3.98	3.96	4.02
Social Science	3.92	3.91	3.88	3.86	3.87	3.89	3.91
Undec./Special	3.96	3.94	3.92	3.90	3.91	3.93	3.93
• Home Location							
San Diego	4.05	4.00	4.00	4.00	4.02	4.01	4.04
Los Angeles	3.93	3.93	3.90	3.89	3.90	3.91	3.93
San Francisco	3.94	3.95	3.92	3.90	3.92	3.92	3.95
Other CA	4.01	4.04	4.01	4.01	4.00	4.02	4.01
Out of State	4.11	4.07	4.00	4.05	4.04	4.02	4.05
• First Generation College Status							
First Generation	3.96	3.91	3.88	3.86	3.86	3.86	3.90
Not First Generation	3.98	3.98	3.96	3.95	3.98	3.98	4.00
• Income Group							
High (≥\$98,401)	3.98	4.00	3.98	3.98	4.00	3.99	4.03
Med. High (\$65,601-\$98,400)	3.98	4.02	4.00	3.96	4.02	3.98	4.04
Med. Low (\$32,801-\$65,600)	3.99	3.94	3.91	3.89	3.92	3.92	3.95
Low (≤\$32,800)	3.93	3.88	3.84	3.84	3.82	3.83	3.86
Missing	3.96	3.99	3.98	3.98	4.00	4.01	4.01
• Athletes³							
Athletes	NA	3.91	3.91	3.89	3.93	3.94	NA
Non-Athletes	NA	3.96	3.94	3.93	3.94	3.94	NA
Total	3.98	3.96	3.94	3.93	3.94	3.94	3.96

Average high school GPAs vary somewhat by gender, ethnicity, and major field of study. For example, the average GPA of females is typically higher than that of males.

¹ GPAs may exceed 4.0 with credit given for honors courses.

² 1999 Income Categories: High = Income ≥ \$87,001 Medium Low = \$29,001-\$58,000
 Medium High = \$58,001-\$87,000 Low = Income ≤ \$29,000

³ 2009 Athlete data not available until Winter Quarter 2010.

Table 26.

SAT¹ I Scores by Gender, Ethnicity, Major Field of Study, Home Location, 1st Generation College Status & Income Fall Quarter

First-Time Freshmen SAT I	1999 ² Average	2004 Average	2005 Average	2006 Average	2007 Average	2008 Average	2009 Average
• Gender							
Female	1228	1217	1230	1217	1224	1225	1229
Male	1290	1276	1282	1277	1278	1287	1291
• Ethnicity							
African-American	1207	1109	1149	1130	1149	1150	1127
Asian	1252	1258	1267	1258	1266	1277	1283
Mexican-American	1140	1091	1119	1089	1101	1082	1104
Filipino	1193	1184	1194	1196	1195	1204	1222
Latino	1162	1167	1152	1140	1165	1130	1139
Native-American	1260	1261	1217	1232	1191	1226	1226
Caucasian	1282	1272	1285	1276	1286	1282	1293
• Major Field of Study							
Arts	1273	1235	1238	1240	1226	1255	1204
Humanities	1268	1265	1289	1251	1266	1248	1253
Engineering	1290	1275	1289	1270	1281	1280	1279
Science/Math	1233	1226	1227	1245	1236	1250	1265
Biology	1249	1247	1247	1245	1246	1256	1276
Social Science	1231	1222	1243	1222	1226	1235	1235
Undec./Special	1257	1234	1245	1239	1249	1240	1242
• Home Location							
San Diego	1195	1182	1212	1189	1197	1208	1218
Los Angeles	1257	1242	1246	1232	1234	1239	1241
San Francisco	1296	1291	1286	1286	1300	1303	1311
Other CA	1250	1215	1240	1229	1219	1227	1226
Out of State	1330	1321	1308	1296	1314	1294	1281
• First Generation College Status							
First Generation	1169	1160	1169	1150	1164	1163	1166
Not First Generation	1284	1276	1285	1279	1290	1294	1304
• Income Group							
High (≥\$98,401)	1294	1289	1305	1293	1316	1313	1332
Med. High (\$65,601-\$98,400)	1268	1251	1264	1257	1257	1267	1282
Med. Low (\$32,801-\$65,600)	1242	1219	1232	1218	1222	1219	1228
Low (≤\$32,800)	1161	1161	1164	1148	1162	1159	1164
Missing	1297	1303	1310	1305	1317	1328	1327
• Athletes ³							
Athletes	NA	1237	1263	1236	1246	1255	NA
Non-Athletes	NA	1243	1253	1243	1248	1252	NA
Total	1256	1242	1253	1243	1248	1252	1257

¹ SAT scores were "recentered" starting with the 1996 freshman cohort.

² 1999 Income Categories: High = Income ≥ \$87,001 Medium Low = \$29,001-\$58,000
 Medium High = \$58,001-\$87,000 Low = Income ≤ \$29,000

³ 2009 Athlete data not available until Winter Quarter 2010.

The average SAT composite scores tend to vary by gender, ethnicity, and major. Males typically earn higher SAT scores compared to females.

Table 27.

Intercampus Comparison¹ of Average SAT I Composite Scores **Fall Quarter**

UC Campus	1999	2000	2001	2002	2003	2004	2005	2006	2007	2008	2009 ²
• Berkeley	1306	1309	1294	1302	1303	1318	1325	1313	1315	1319	NA
• Davis	1166	1171	1164	1171	1175	1171	1174	1153	1159	1171	1189
• Irvine	1161	1178	1174	1181	1193	1201	1200	1180	1170	1172	1200
• Los Angeles	1275	1277	1274	1263	1278	1290	1285	1284	1279	1269	NA
• Merced ³	NA	NA	NA	NA	NA	NA	1069	1049	1053	1042	1034
• Riverside	1057	1058	1066	1058	1064	1074	1074	1042	1047	1051	1056
• San Diego	1259	1260	1271	1247	1253	1250	1253	1243	1247	1251	1257
• Santa Barbara	1179	1183	1186	1163	1177	1172	1193	1171	1180	1179	NA
• Santa Cruz	1151	1144	1152	1136	1142	1157	1159	1132	1130	1141	1150
Systemwide	1201	1202	1202	1193	1198	1206	1211	1193	1191	1190	NA

¹ Source: University of California, Office of the President website.

² 2009 data based on personal contact with representatives for each UC Campus and are subject to change.

³ Merced enrolled its first freshman class in Fall 2005.

When compared on the basis of average SAT scores, UCSD ranks among the top three universities in the UC system.

Table 28.

UCSD's Position Relative to Other UC Campuses on SAT I Scores **Fall Quarter**

Rank	1999	2000	2001	2002	2003	2004	2005	2006	2007	2008	2009
• 1	UCB	UCB	UCB	UCB	UCB	UCB	UCB	UCB	UCB	UCB	NA
• 2	UCLA	UCLA	UCLA	UCLA	UCLA	UCLA	UCLA	UCLA	UCLA	UCLA	NA
• 3	UCSD	UCSD	UCSD	UCSD	UCSD	UCSD	UCSD	UCSD	UCSD	UCSD	NA
• 4	UCSB	UCSB	UCSB	UCI	UCI	UCI	UCI	UCI	UCSB	UCSB	NA
• 5	UCD	UCI	UCI	UCD	UCSB	UCSB	UCSB	UCSB	UCI	UCI	NA
• 6	UCI	UCD	UCD	UCSB	UCD	UCD	UCD	UCD	UCD	UCD	NA
• 7	UCSC	UCSC	UCSC	UCSC	UCSC	UCSC	UCSC	UCSC	UCSC	UCSC	NA
• 8	UCR	UCR	UCR	UCR	UCR	UCR	UCR	UCM	UCM	UCR	NA
• 9							UCM	UCR	UCR	UCM	NA



**New
Transfer
Students**

■ New Transfer Students

Over eleven hundred transfer students applied for admission to UCSD for fall 2009. Approximately, 62% of these students were admitted. Of those students admitted, 1,942 registered resulting in a yield of 27%.

Table 29.

New Transfers: Applicants, Admits & Registered Fall Quarter

New Transfers	1999	2004	2005	2006	2007	2008	2009	10 Year Δ
• Applicants	5,351	9,825	9,291	8,945	8,872	9,871	11,572	+116%
• Admits	2,845	4,824	5,939	5,755	6,494	6,443	7,160	+152%
Admit/Applicant Rate	53%	49%	64%	64%	73%	65%	62%	
• Registered	1,007	1,325	1,680	1,482	1,742	1,876	1,942	+93%
Registered/Admit Rate	35%	27%	28%	26%	27%	29%	27%	

Figure 15.

New Transfers: Applicants, Admits & Registered Fall Quarter

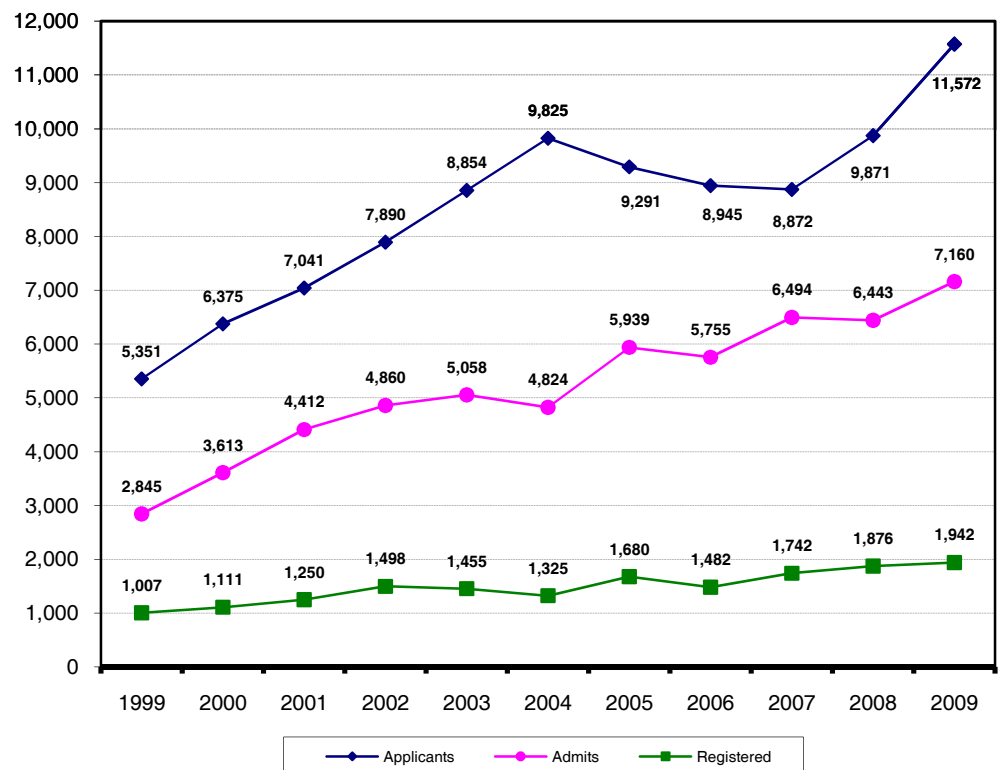


Table 30.

New Transfers by Gender Fall Quarter

Gender	1999	2004	2005	2006	2007	2008	2009	10 Year Δ
• Female	516 51%	631 48%	785 47%	668 45%	814 47%	847 45%	888 46%	+72%
• Male	491 49%	694 52%	895 53%	814 55%	928 53%	1,029 55%	1,054 54%	+115%
Total	1,007	1,325	1,680	1,482	1,742	1,876	1,942	+93%

Unlike the 2009 freshman cohort, male transfer students outnumber women by approximately 8%.

Figure 16.

New Transfers by Gender Fall Quarter

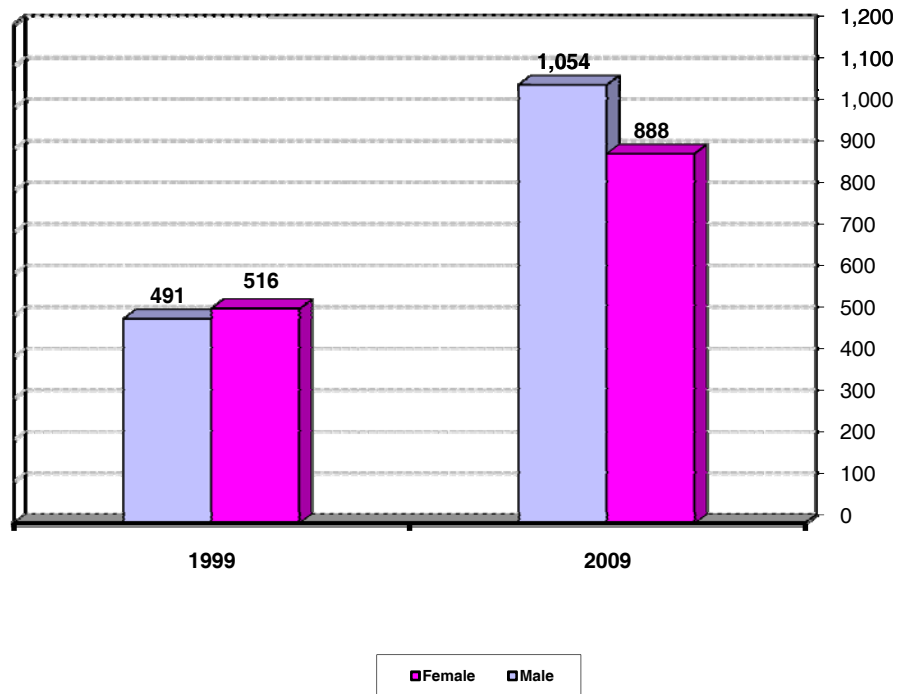


Table 31.

New Transfers by Ethnicity

Fall Quarter

Ethnicity	1999	2004	2005	2006	2007	2008	2009	10 Year Δ
• African-American	14 1%	24 2%	27 2%	24 2%	37 2%	48 3%	45 2%	+221%
• Asian	222 22%	387 29%	549 33%	504 34%	585 34%	725 39%	768 40%	+246%
• Mexican-American	86 9%	112 8%	138 8%	121 8%	165 9%	176 9%	183 9%	+113%
• Filipino	33 3%	55 4%	69 4%	50 3%	83 5%	83 4%	60 3%	+82%
• Latino	30 3%	44 3%	39 2%	55 4%	53 3%	53 3%	62 3%	+107%
• Native-American	5 0%	5 0%	9 1%	11 1%	6 0%	8 0%	13 1%	+160%
• Caucasian	454 45%	472 36%	600 36%	525 35%	581 33%	577 31%	604 31%	+33%
• Other/Undeclared	163 16%	226 17%	249 15%	192 13%	232 13%	206 11%	207 11%	+27%
Total	1,007	1,325	1,680	1,482	1,742	1,876	1,942	+93%

For transfer students, the proportion of Asian students has increased over the past decade, while the proportion of Caucasian students has declined. The proportion of Mexican-American, Filipino, Latino and Native-American have stayed approximately the same and, the proportion of African-American students has increased slightly.

Table 32.

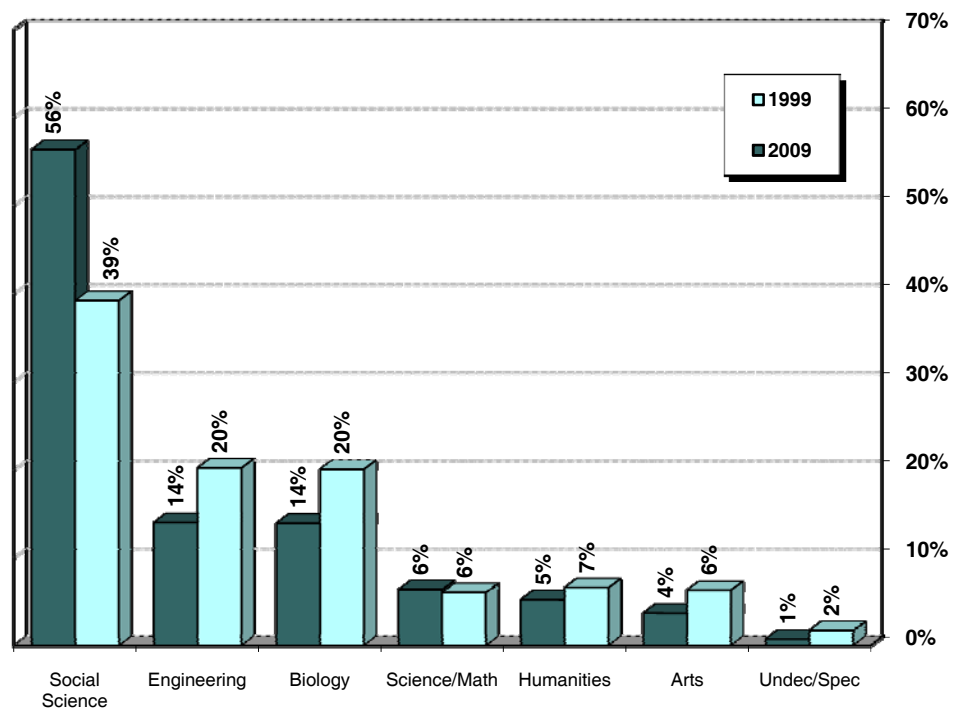
New Transfers by Major Field of Study Fall Quarter

Major Field of Study	1999	2004	2005	2006	2007	2008	2009	10 Year Δ
• Arts	63 6%	68 5%	73 4%	67 5%	83 5%	92 5%	71 4%	+13%
• Humanities	66 7%	71 5%	94 6%	82 6%	72 4%	83 4%	101 5%	+53%
• Engineering	203 20%	220 17%	256 15%	145 10%	180 10%	224 12%	271 14%	+33%
• Science/Math	61 6%	115 9%	157 9%	139 9%	155 9%	129 7%	123 6%	+102%
• Biology	203 20%	180 14%	290 17%	294 20%	338 19%	372 20%	269 14%	+33%
• Social Science	394 39%	641 48%	771 46%	702 47%	854 49%	940 50%	1,093 56%	+177%
• Undeclared/ Special	17 2%	30 2%	39 2%	53 4%	60 3%	36 2%	14 1%	-18%
Total	1,007	1,325	1,680	1,482	1,742	1,876	1,942	+93%

Over one-half (56%) of all new transfer students declared a major in the social sciences.

Figure 17.

New Transfers by Major Field of Study Fall Quarter



Ninety-two percent of new transfer students attended a California Community College prior to enrolling at UCSD. The largest number of new transfer students come from either the Los Angeles or San Diego areas.

Table 33.

New Transfers by Transfer Institution Fall Quarter

Transfer Institution	1999	2004	2005	2006	2007	2008	2009	10 Year Δ
• California Community Colleges	983 98%	1,215 92%	1,567 93%	1,368 92%	1,588 91%	1,747 93%	1,795 92%	+83%
Transfer Admission Guarantee (TAG)	184 18%	294 22%	327 19%	345 23%	327 19%	342 18%	700 36%	+280%
Non-TAG	799 79%	921 70%	1,240 74%	1,023 69%	1,261 72%	1,405 75%	1,095 56%	+37%
• Intercampus Transfer/ Other 4 yr. College	12 1%	104 8%	107 6%	109 7%	147 8%	121 6%	144 7%	+1100%
• Other/Unknown	12 1%	6 0%	6 0%	5 0%	7 0%	8 0%	3 0%	-75%
Total	1,007	1,325	1,680	1,482	1,742	1,876	1,942	+93%

Table 34.

New Transfers by Home Location Fall Quarter

Home Location	1999	2004	2005	2006	2007	2008	2009	10 Year Δ
• San Diego	362 36%	465 35%	523 31%	446 30%	480 28%	503 27%	473 24%	+31%
• Los Angeles	320 32%	393 30%	545 32%	493 33%	616 35%	705 38%	693 36%	+117%
• San Francisco	152 15%	218 16%	303 18%	251 17%	299 17%	322 17%	316 16%	+108%
• Other California	118 12%	106 8%	138 8%	137 9%	158 9%	131 7%	159 8%	+35%
• Out-of-State	6 1%	8 1%	9 1%	12 1%	24 1%	7 0%	20 1%	+233%
• International	49 5%	135 10%	162 10%	143 10%	165 9%	208 11%	281 14%	+473%
Total	1,007	1,325	1,680	1,482	1,742	1,876	1,942	+93%

Table 35.

New Transfers by Undergraduate College Fall Quarter

Undergraduate College	1999	2004	2005	2006	2007	2008	2009	10 Year Δ
• Revelle	142 14%	190 14%	282 17%	215 15%	230 13%	284 15%	304 16%	+114%
• John Muir	239 24%	242 18%	411 24%	296 20%	367 21%	260 14%	287 15%	+20%
• Thurgood Marshall	254 25%	306 23%	376 22%	290 20%	356 20%	392 21%	418 22%	+65%
• Earl Warren	264 26%	305 23%	254 15%	249 17%	265 15%	251 13%	218 11%	-17%
• Eleanor Roosevelt	108 11%	213 16%	247 15%	295 20%	316 18%	366 20%	393 20%	+264%
• Sixth	NA NA	69 5%	110 7%	137 9%	208 12%	323 17%	322 17%	NA
Total	1,007	1,325	1,680	1,482	1,742	1,876	1,942	+93%

In 2009, Thurgood Marshall enrolled the largest proportion (22%) of new transfer students, followed closely by Eleanor Roosevelt (20%).

Figure 18.

New Transfers by Undergraduate College Fall Quarter

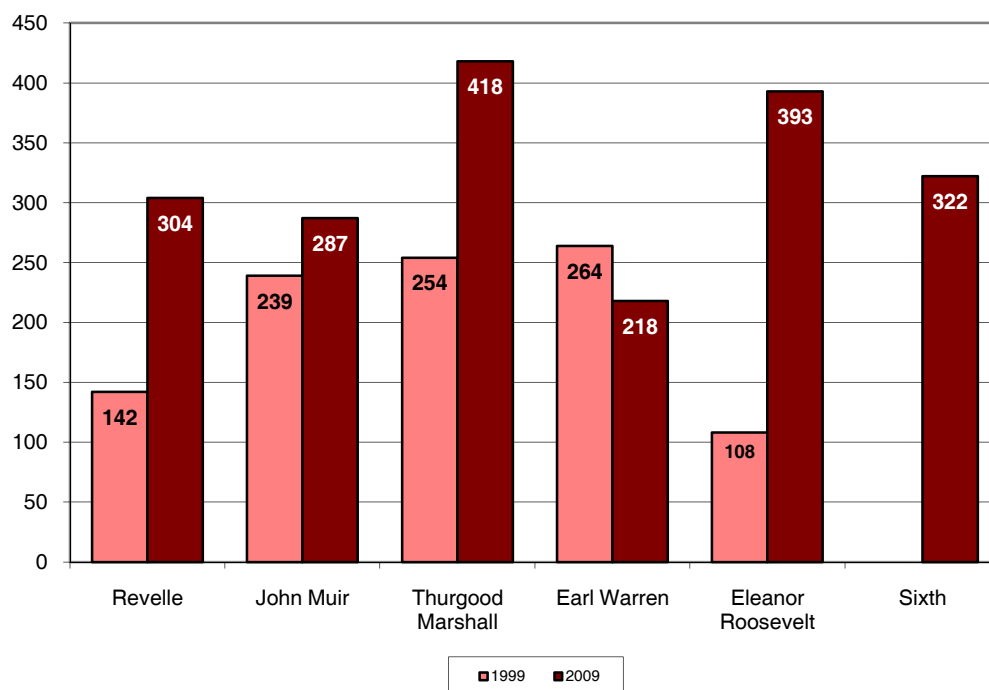


Table 36.

New Transfers by 1st Generation College Status Fall Quarter

College Status	1999	2004	2005	2006	2007	2008	2009	10 Year Δ
• First Generation	339 34%	420 32%	542 32%	458 31%	542 31%	625 33%	608 31%	+79%
• Not First Generation	668 66%	905 68%	1,138 68%	1,024 69%	1,200 69%	1,251 67%	1,334 69%	+100%
Total	1,007	1,325	1,680	1,482	1,742	1,876	1,942	+93%

The majority (69%) of new transfer students have at least one parent who has graduated from a two-year junior college or four-year college/university.

Table 37.

New Transfers by Income Group Fall Quarter

Income	1999*	2004	2005	2006	2007	2008	2009	10 Year Δ
• High (≥\$98,401)	153 15%	255 19%	304 18%	280 19%	353 20%	367 20%	458 24%	+199%
• Medium High (\$65,601 - \$98,400)	125 12%	143 11%	200 12%	158 11%	193 11%	203 11%	185 10%	+48%
• Medium Low (\$32,801 - \$65,600)	221 22%	225 17%	255 15%	215 15%	291 17%	288 15%	296 15%	+34%
• Low (≤\$32,800)	221 22%	272 21%	245 15%	242 16%	284 16%	289 15%	314 16%	+42%
• Missing	287 29%	430 32%	676 40%	587 40%	621 36%	729 39%	689 35%	+140%
Total	1,007	1,325	1,680	1,482	1,742	1,876	1,942	+93%

* 1999 Income Categories:
 High = Income ≥ \$87,001
 Medium High = \$58,001-\$87,000
 Medium Low = \$29,001-\$58,000
 Low = Income ≤ \$29,000

Approximately, 2% of new transfer students participate on a UCSD athletic team.

Table 38.

New Transfers Freshmen by Athletic Status Fall Quarter

College Status	1999	2004	2005	2006	2007	2008	2009*	10 Year Δ
• Athlete	NA NA	37 3%	35 2%	31 2%	41 2%	44 2%	NA NA	NA
• Non-Athlete	NA NA	1,288 97%	1,645 98%	1,451 98%	1,701 98%	1,832 98%	NA NA	NA
Total	1,007	1,325	1,680	1,482	1,742	1,876	1,942	+93%

* 2009 Athlete data not available until Winter Quarter 2010.

Table 39.

Major* Feeder Transfer Institutions **Fall Quarter**

School	City	Enrollment N Fall 2009	% of Total Enrollment
De Anza College	Cupertino	148	7.6%
Santa Monica College	Santa Monica	120	6.2%
San Diego Mesa College	San Diego	120	6.2%
Palomar College	San Marcos	87	4.5%
Pasadena City College	Pasadena	80	4.1%
Diablo Valley College	Pleasant Hill	67	3.5%
Grossmont Community College	El Cajon	65	3.3%
Orange Coast College	Costa Mesa	60	3.1%
Southwestern College	Chula Vista	59	3.0%
Mira Costa College	Oceanside	56	2.9%
Foothill College	Los Altos Hills	51	2.6%
Mount San Antonio College	Walnut	47	2.4%
El Camino College	Torrance	41	2.1%
San Diego-Miramar College	San Diego	41	2.1%
Moorpark College	Moorpark	39	2.0%
Saddleback Community College South	Mission Viejo	39	2.0%
San Diego City College	San Diego	37	1.9%
UC Riverside	Riverside	33	1.7%
Glendale Community College	Glendale	30	1.5%
Santa Barbara City College	Santa Barbara	30	1.5%
Ohlone College	Fremont	27	1.4%
Los Angeles Pierce College	Woodland Hills	26	1.3%
East Los Angeles College	Los Angeles	25	1.3%
UC Santa Cruz	Santa Cruz	21	1.1%
Cerritos College	Cerritos	20	1.0%
College of the Canyons	Santa Clarita	19	1.0%
Riverside Community College	Riverside	19	1.0%
Fullerton College	Fullerton	18	0.9%
City College of San Francisco	San Francisco	17	0.9%
Cuyamaca College	El Cajon	17	0.9%
Sierra College	Rocklin	16	0.8%
Irvine Valley College	Irvine	15	0.8%
American River College	Sacramento	15	0.8%
Sacramento City College	Sacramento	15	0.8%
Santa Rosa Junior College	Santa Rosa	15	0.8%
Cypress College	Cypress	14	0.7%
College of San Mateo	San Mateo	13	0.7%
Citrus College	Glendora	12	0.6%
Mount San Jacinto College	San Jacinto	12	0.6%
Ventura College	Ventura	11	0.6%
Santiago Canyon College	Orange	10	0.5%
UC Merced	Merced	10	0.5%
Chabot College	Hayward	10	0.5%
Subtotal (Number of Transfer Institutions = 43)		1,627	83.8%
Other Institutions (Number of Transfer Institutions = 102)		315	16.2%
Total (Number of Transfer Institutions = 145)		1,942	100.0%

De Anza College tops the list of major feeder transfer institutions. Approximately 8% percent of the 2009 transfer cohort (n=148) transferred to UCSD from De Anza College.

* Ten or more matriculants from named transfer institution.



**New
Transfer
Student
Academic
Preparation**

■ Academic Preparation: New Transfer Students

Table 40.

New Transfer Cohort by Transfer GPA Averages Fall Quarter

Transfer	1999	2004	2005	2006	2007	2008	2009
• Transfer GPA	3.25	3.40	3.32	3.33	3.30	3.33	3.41

Table 41.

New Transfer Cohort by Academic Indicator Ranges Fall Quarter

Transfer GPA Range	Percentage in Range	
	1999	2009
• 3.90 - High	5%	7%
• 3.60 - 3.89	15%	23%
• 3.30 - 3.59	29%	33%
• 3.00 - 3.29	29%	28%
• 2.70 - 2.99	20%	7%
• Low - 2.69	2%	2%
Total	100%	100%

} 49% } 63%

The mean transfer GPA for the 2009 transfer cohort was 3.41. Thirty percent of the new transfer cohort had earned a GPA of 3.60 and higher prior to attending UCSD.



**Degrees
Conferred**

■ Degrees Conferred

UCSD awarded more than seventy-one hundred undergraduate, graduate and professional degrees in 2008/2009, representing the largest number of UCSD graduates to date.

Table 42.

Degrees Conferred: All Degree Types								Fall Quarter
All Degree Types	'98/'99	'03/'04	'04/'05	'05/'06	'06/'07	'07/'08	'08/'09	10 Year Δ
• Bachelors	3,574 81%	4,136 75%	5,043 78%	5,200 77%	5,061 76%	5,337 75%	5,325 74%	+49%
• Masters	358 8%	785 14%	797 12%	761 11%	901 13%	894 13%	990 14%	+177%
• Candidate in Philosophy	120 3%	161 3%	170 3%	253 4%	185 3%	258 4%	234 3%	+95%
• Doctor of Philosophy	303 7%	327 6%	303 5%	376 6%	387 6%	488 7%	437 6%	+44%
• Doctor of Medicine	35 1%	100 2%	117 2%	186 3%	101 2%	125 2%	109 2%	+211%
• Doctor of Pharmacy	NA NA	NA NA	NA NA	NA NA	47 1%	31 0%	55 1%	NA
Total	4,390	5,509	6,430	6,776	6,682	7,133	7,150	+63%

Figure 19.

Degrees Conferred Undergraduate and Graduate Degree Trends

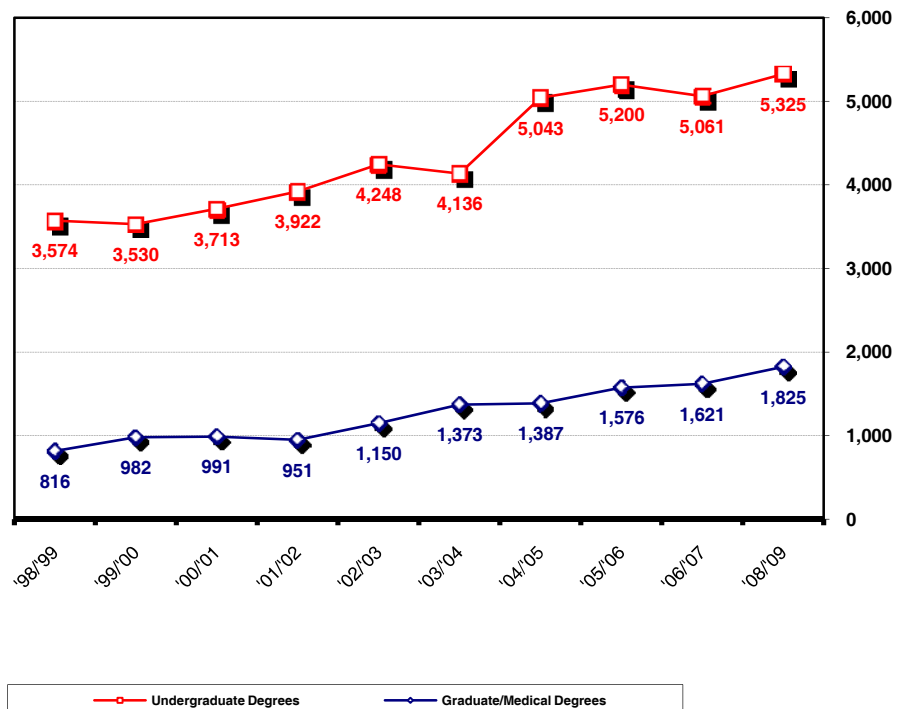


Table 43.

Undergraduate Degrees by Gender Fall Quarter

Gender	'98/'99	'03/'04	'04/'05	'05/'06	'06/'07	'07/'08	'08/'09	10 Year Δ
• Female	1,846 52%	2,272 55%	2,658 53%	2,747 53%	2,642 52%	2,847 53%	2,798 53%	+52%
• Male	1,728 48%	1,864 45%	2,385 47%	2,453 47%	2,419 48%	2,490 47%	2,527 47%	+46%
Total UG Degrees	3,574	4,136	5,043	5,200	5,061	5,337	5,325	+49%

Of the 5,325 undergraduate degrees awarded in 2008/2009, the majority (53%) were awarded to women.

Figure 20.

Undergraduate Degrees by Gender Fall Quarter

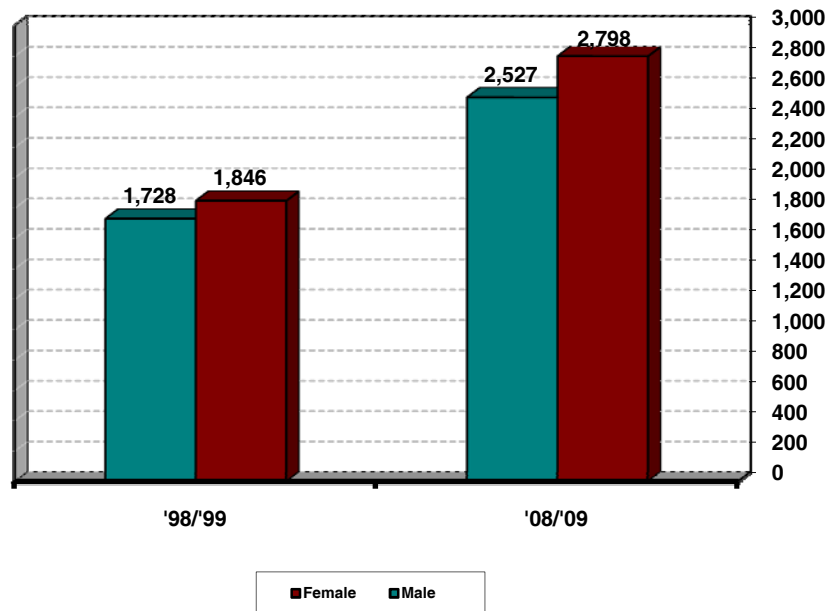


Table 44.

Undergraduate Degrees by Ethnicity Fall Quarter

Ethnicity	'98/'99	'03/'04	'04/'05	'05/'06	'06/'07	'07/'08	'08/'09	10 Year Δ
• African-American	57 2%	50 1%	59 1%	58 1%	70 1%	55 1%	84 2%	+47%
• Asian	1,005 28%	1,276 31%	1,690 34%	1,794 35%	1,692 33%	1,933 36%	2,065 39%	+105%
• Mexican-American	276 8%	304 7%	349 7%	347 7%	386 8%	386 7%	451 8%	+63%
• Filipino	173 5%	196 5%	249 5%	271 5%	234 5%	256 5%	243 5%	+40%
• Latino	84 2%	85 2%	107 2%	116 2%	129 3%	127 2%	139 3%	+65%
• Native-American	24 1%	15 0%	31 1%	22 0%	27 1%	21 0%	27 1%	+13%
• Caucasian	1,616 45%	1,669 40%	1,878 37%	1,879 36%	1,841 36%	1,770 33%	1,657 31%	+3%
• Other/Undeclared	339 9%	541 13%	680 13%	713 14%	682 13%	789 15%	659 12%	+94%
Total UG Degrees	3,574	4,136	5,043	5,200	5,061	5,337	5,325	+49%

Fifty percent (50%) of the UCSD bachelor's degrees awarded in 2008/2009 were earned by students of color.

Figure 21.

Undergraduate Degrees by Ethnicity Fall Quarter

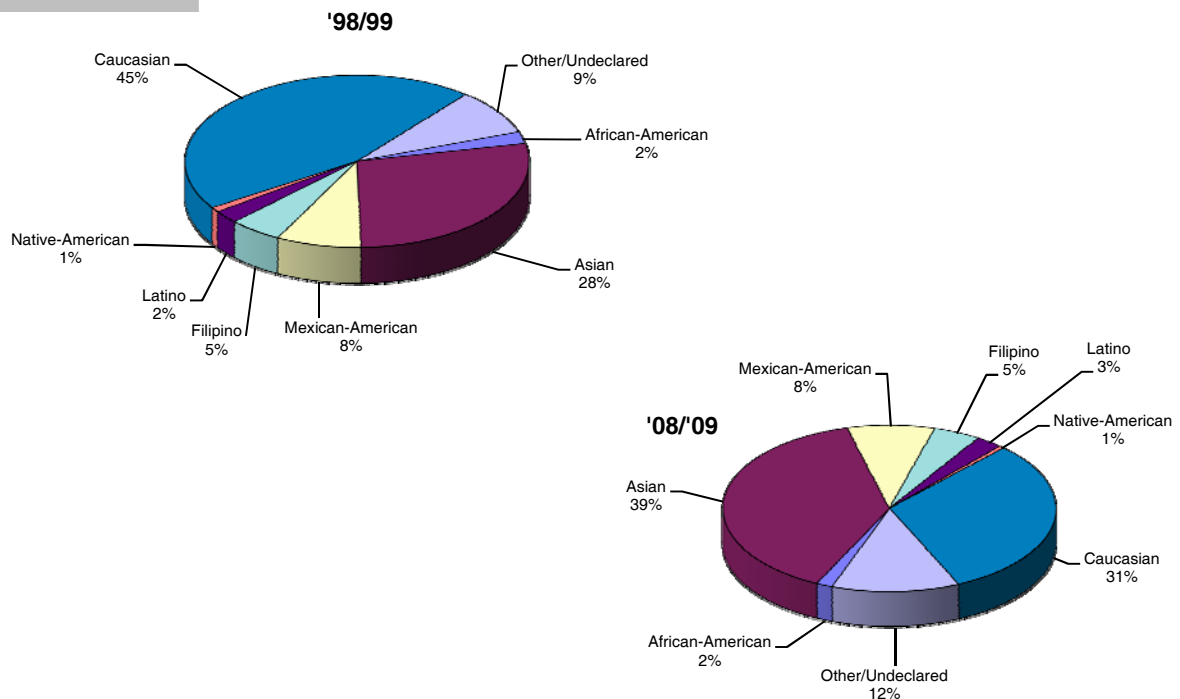


Table 45.

Undergraduate Degrees by Major Field of Study **Fall Quarter**

Major Field of Study	'98/'99	'03/'04	'04/'05	'05/'06	'06/'07	'07/'08	'08/'09	10 Year Δ
• Arts	156 4%	281 7%	296 6%	280 5%	257 5%	232 4%	249 5%	+60%
• Humanities	312 9%	253 6%	259 5%	280 5%	262 5%	291 5%	260 5%	-17%
• Engineering	446 13%	654 16%	998 20%	933 18%	814 16%	763 14%	747 14%	+67%
• Science/Math	187 5%	259 6%	327 6%	310 6%	339 7%	360 7%	395 7%	+111%
• Biology	973 27%	661 16%	752 15%	906 17%	939 19%	1,113 21%	1,173 22%	+21%
• Social Science	1,494 42%	2,022 49%	2,406 48%	2,486 48%	2,446 48%	2,577 48%	2,499 47%	+67%
• Double/Special	6 0%	6 0%	5 0%	5 0%	4 0%	1 0%	2 0%	-67%
Total UG Degrees	3,574	4,136	5,043	5,200	5,061	5,337	5,325	+49%

Almost one-half (47%) of all bachelor's degrees were awarded to social science majors.

Table 46.

Undergraduate Degrees by College **Fall Quarter**

College	'98/'99	'03/'04	'04/'05	'05/'06	'06/'07	'07/'08	'08/'09	10 Year Δ
• Revelle	708 20%	715 17%	879 17%	841 16%	799 16%	854 16%	839 16%	+19%
• John Muir	837 23%	916 22%	1,008 20%	1,066 21%	972 19%	1,031 19%	1,035 19%	+24%
• Thurgood Marshall	751 21%	932 23%	1,105 22%	1,002 19%	989 20%	1,001 19%	951 18%	+27%
• Earl Warren	888 25%	1,009 24%	1,363 27%	1,367 26%	1,254 25%	1,125 21%	1,132 21%	+27%
• Eleanor Roosevelt*	390 11%	564 14%	681 14%	773 15%	733 14%	818 15%	823 15%	+111%
• Sixth**	NA NA	NA NA	7 0%	151 3%	314 6%	508 10%	545 10%	NA
Total UG Degrees	3,574	4,136	5,043	5,200	5,061	5,337	5,325	+49%

* Eleanor Roosevelt College enrolled its first class of undergraduates in 1988.

** Sixth College enrolled its first class of undergraduates in 2002.

Table 47.

Undergraduate Degrees by 1st Generation College Status Fall Quarter

College Status	'98/'99	'03/'04	'04/'05	'05/'06	'06/'07	'07/'08	'08/'09	10 Year Δ
• First Generation	855 24%	982 24%	1,189 24%	1,180 23%	1,251 25%	1,429 27%	1,530 29%	+79%
• Not First Generation	2,719 76%	3,154 76%	3,854 76%	4,020 77%	3,810 75%	3,908 73%	3,795 71%	+40%
Total UG Degrees	3,574	4,136	5,043	5,200	5,061	5,337	5,325	+49%

Table 48.

Undergraduate Degrees by Income Group Fall Quarter

Income	'98/'99	'03/'04	'04/'05	'05/'06	'06/'07	'07/'08	'08/'09	10 Year Δ
• High (\geq \$98,401)	721 20%	905 22%	1,190 24%	1,212 23%	1,170 23%	1,192 22%	1,144 21%	+59%
• Medium High (\$65,601 - \$98,400)	564 16%	618 15%	693 14%	694 13%	608 12%	647 12%	631 12%	+12%
• Medium Low (\$32,801 - \$65,600)	694 19%	833 20%	1,035 21%	1,020 20%	961 19%	1,006 19%	1,045 20%	+51%
• Low (\leq \$32,800)	681 19%	742 18%	879 17%	981 19%	936 18%	1,006 19%	1,080 20%	+59%
• Missing	914 26%	1,038 25%	1,246 25%	1,293 25%	1,386 27%	1,486 28%	1,425 27%	+56%
Total UG Degrees	3,574	4,136	5,043	5,200	5,061	5,337	5,325	+49%

* 1998-1999 Income Categories:

High = Income \geq \$87,001

Medium High = \$58,001-\$87,000

Medium Low = \$29,001-\$58,000

Low = Income \leq \$29,000

Table 49.

Time-to-Degree*/Academic Performance
Entered UCSD from High School Fall Quarter

Undergraduate Degrees	'98/'99	'03/'04	'04/'05	'05/'06	'06/'07	'07/'08	'08/'09
• Time-to-Degree							
Average Elapsed Time in Years	4.4 yrs.	4.4 yrs.	4.3 yrs.	4.3 yrs.	4.3 yrs.	4.3 yrs.	4.3 yrs.
Average Elapsed Time in Quarters	13.3 qtrs.	13.3 qtrs.	13.0 qtrs.	12.8 qtrs.	12.9 qtrs.	12.8 qtrs.	12.8 qtrs.
• GPA at Graduation							
GPA \geq 3.5 (B+ or greater)	21.5%	25.4%	25.8%	25.9%	25.0%	24.8%	24.0%
3.00 \leq GPA < 3.5 (B to B+)	42.6%	42.8%	43.6%	43.4%	42.6%	43.3%	42.4%
2.50 \leq GPA < 3.00 (C+ to B)	28.2%	25.9%	25.0%	25.3%	25.5%	25.7%	26.5%
2.0 \leq GPA < 2.50 (C to C+)	7.7%	5.9%	5.7%	5.4%	6.9%	6.3%	7.1%
GPA < 2.0	0.0%	0.0%	0.0%	0.0%	0.0%	0.0%	0.0%

* Time-to-degree is reported in elapsed quarters from first enrollment date to graduation. Only the records of students who enter UCSD in the Fall Quarter are included in time-to-degree calculations. An academic year is defined as three quarters; twelve quarters equal four years. Summer degrees are combined with Fall degrees, and combined, represent one quarter.

The average time-to-degree for undergraduate students entering from high school is approximately 13 quarters or 4.3 years. The average GPA earned by the 2008/2009 graduating class is 3.16.

Figure 22.

Grade Distribution: Degree Recipients Fall Quarter

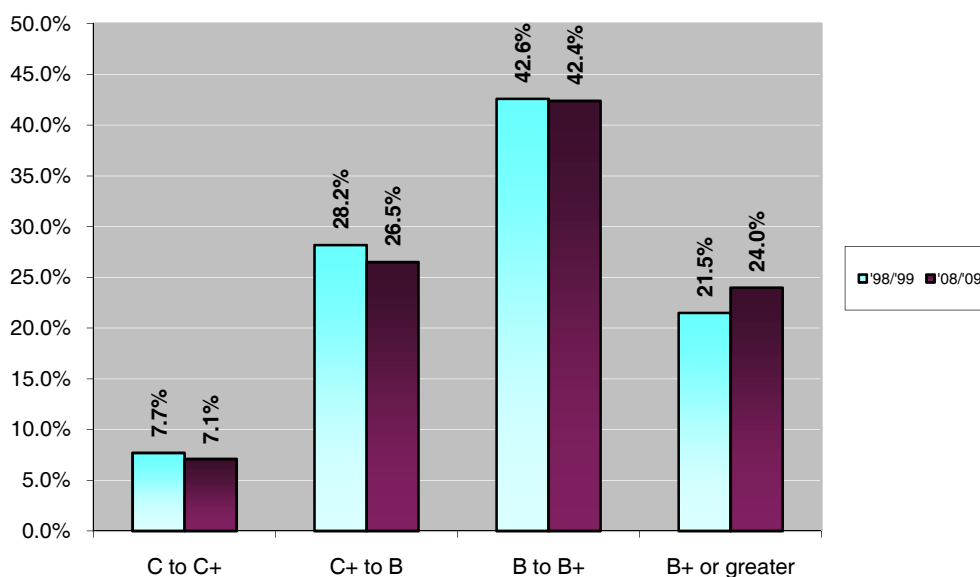


Table 50.

Time-to-Degree*/Academic Performance
Entered UCSD from a Two-Year Community College Fall Quarter

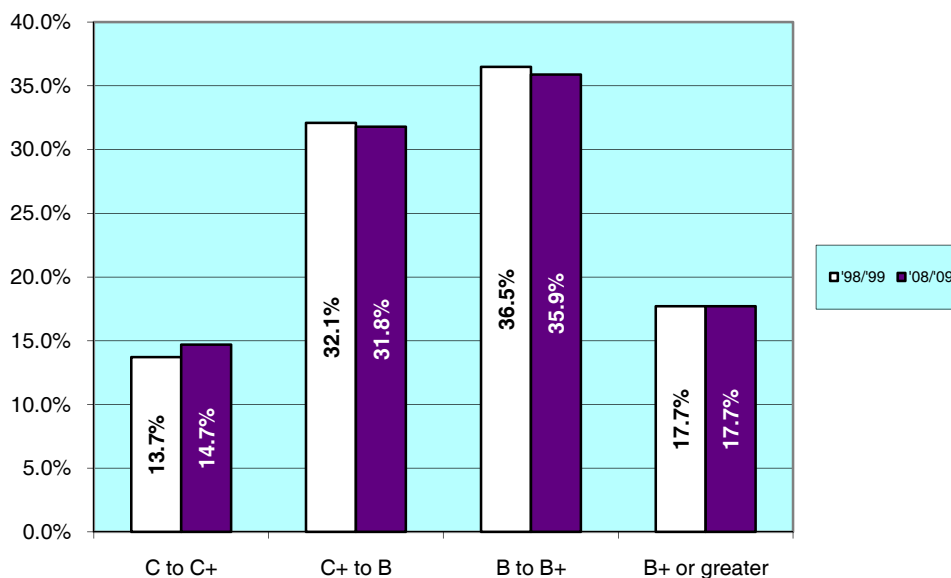
Undergraduate Degrees	'98/'99	'03/'04	'04/'05	'05/'06	'06/'07	'07/'08	'08/'09
• Time-to-Degree							
Average Elapsed Time in Years	2.9 yrs.	2.7 yrs.	2.7 yrs.	2.6 yrs.	2.6 yrs.	2.7 yrs.	2.6 yrs.
Average Elapsed Time in Quarters	8.7 qtrs.	8.2 qtrs.	8.0 qtrs.	7.9 qtrs.	7.8 qtrs.	8.0 qtrs.	7.9 qtrs.
• GPA at Graduation							
GPA \geq 3.5 (B+ or greater)	17.7%	19.6%	16.8%	19.3%	18.8%	18.1%	17.7%
$3.00 \leq$ GPA < 3.5 (B to B+)	36.5%	36.6%	38.6%	35.9%	37.1%	37.1%	35.9%
$2.50 \leq$ GPA < 3.00 (C+ to B)	32.1%	30.6%	31.2%	32.5%	32.0%	30.8%	31.8%
$2.0 \leq$ GPA < 2.50 (C to C+)	13.7%	13.1%	13.2%	12.3%	12.1%	13.9%	14.7%
GPA < 2.0	0.0%	0.0%	0.0%	0.0%	0.0%	0.0%	0.0%

* Time-to-degree is reported in elapsed quarters from first enrollment date to graduation. Only the records of students who enter UCSD in the Fall Quarter are included in time-to-degree calculations. An academic year is defined as three quarters; twelve quarters equal four years. Summer degrees are combined with Fall degrees, and combined, represent one quarter.

Community College transfer students complete their degree requirements at UCSD in under eight quarters or three years. The average GPA earned by the 2008/2009 graduating class for courses taken at UCSD was 3.03.

Figure 23.

Grade Distribution: Degree Recipients Fall Quarter





**Appendix:
Undergraduate
Major Fields
of Study /
Academic
Departments**

■ Undergraduate Major Fields of Study/Academic Departments

ARTS

Music Department
Theatre & Dance Department
Visual Arts Department

HUMANITIES

Classical Studies
History Department
Literature Department
Philosophy Department

SCHOOL OF ENGINEERING

Bioengineering Department
Chemical Engineering
Computer Science and Engineering Department
Electrical and Computer Engineering Department
Mechanical and Aerospace Engineering Department
Structural Engineering

BIOLOGY

Biology Department

SPECIAL AND UNDECLARED

Individual Studies
Limited Status
Special-Employee
Undeclared

SOCIAL SCIENCE

Anthropology Department
Chinese Studies
Cognitive Science Department
Communication Department
Critical Gender Studies
Economics Department
Ethnic Studies Department
German Studies
Human Development Program
International Studies
Italian Studies
Japanese Studies
Judaic Studies
Latin American Studies
Linguistics Department
Political Science Department
Program for the Study of Religion
Psychology Department
Russian and Soviet Studies
Sociology Department
Third World Studies
Urban Studies and Planning Program

SCIENCE AND MATH

Chemistry and Biochemistry Department
Earth Sciences Program
Environmental Systems
Mathematics Department
Physics Department



The Student Digest is an annual publication of the
Office of Student Research & Information,
Student Affairs, 858-534-2382.

This document is also available on the
World Wide Web at:

studentresearch.ucsd.edu