



UNIVERSITY OF CALIFORNIA, SAN DIEGO  
**STUDENT DIGEST**  
2011-2012  
Enrollment and Academic Performance Statistics

Office of Student Research  
& Information, Student Affairs  
[studentresearch.ucsd.edu](http://studentresearch.ucsd.edu)

---

## ■ INTRODUCTION

□ The *Student Digest*, published annually by the Office of Student Research and Information, provides the campus community with a broad overview of trends in undergraduate enrollments, academic performance and graduation statistics. If you have questions or comments regarding this publication, please contact the Office of Student Research and Information/Student Affairs at (858) 534-2382. If you wish to view this report and other statistical reports, they can be found on the World Wide Web at <http://studentresearch.ucsd.edu>.

---

## **STUDENT DIGEST**

### **Enrollment and Academic Performance Statistics**

**Fall 2011**

**University of California, San Diego**

William B. Armstrong, Ph.D.  
Director

Heidi M. Carty, Ph.D.  
Principal Research Analyst

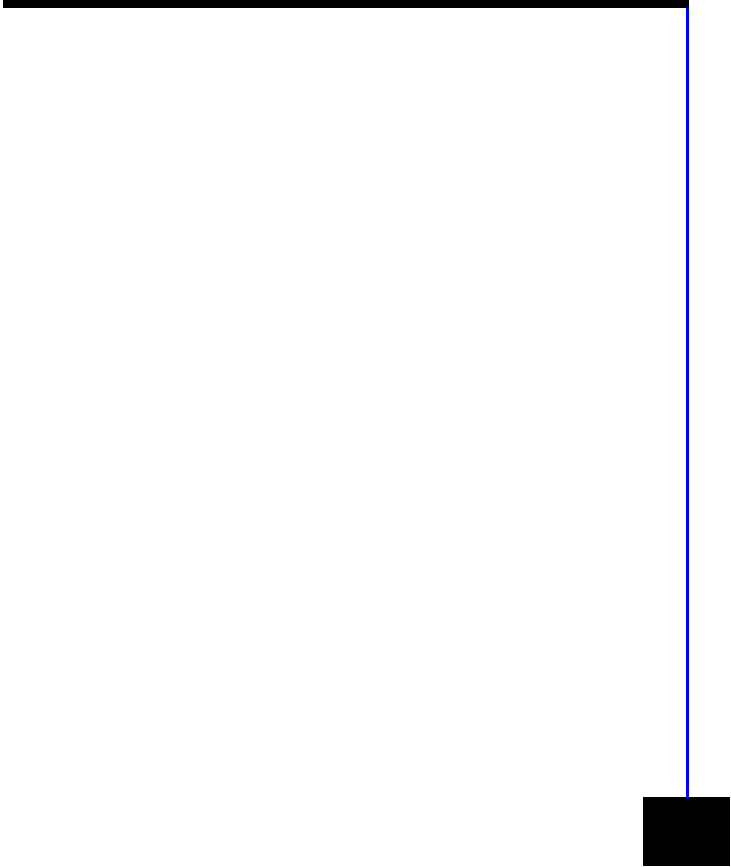
Greg Martin  
Programmer Analyst

Jason R. Thornton  
Research Analyst

Student Research & Information  
Student Affairs  
University of California, San Diego  
La Jolla, CA 92093-0088  
<http://studentresearch.ucsd.edu>

# ■ Table of Contents

<b>Total Campus Enrollment</b>	<b>4</b>
Total Campus Population Summary	5
<b>Total Undergraduate Enrollment</b>	<b>6</b>
By Class Level	7
By Gender	8
By Ethnicity	9
By Major Field of Study	10
By Major Department	11
By College	12
<b>Academic Profile: Undergraduates</b>	<b>13</b>
Total Undergraduate Population Summary	14
By Class Level	15
By Major Field of Study	16
<b>New Students</b>	<b>17</b>
New Student Enrollments	18
<b>First-Time Freshmen</b>	<b>19</b>
Applicants, Admits & Registered	20
By Gender	21
By Ethnicity	22
By Major Field of Study	23
By Major Department at Time of Admission	24
By College & Home Location	25
By 1st Generation College Status & Income Group & Athletic Status	26
Major Feeder High Schools	27
<b>High School Grades and SAT Scores</b>	<b>28</b>
Indicators of Academic Preparation	29
High School GPA by Gender, Ethnicity, Major Field of Study, Home Location, 1st Generation College Status & Income Group	30
SAT Reasoning (Critical Reading & Math) Test Composite Scores by Gender, Ethnicity, Major Field of Study, Home Location, 1st Generation College Status & Income Group	31
SAT Reasoning (Critical Reading, Math & Writing) Test Composite Scores by Gender, Ethnicity, Major Field of Study, Home Location, 1st Generation College Status & Income Group	32
<b>New Transfer Students</b>	<b>33</b>
Applicants, Admits & Registered	34
By Gender	35
By Ethnicity	36
By Major Field of Study	37
By Transfer Institution & Home Location	38
By Undergraduate College	39
By 1st Generation College Status & Income Group & Athletic Status	40
Major Feeder Transfer Institutions	41
<b>New Transfer Student Academic Preparation</b>	<b>42</b>
Indicators of Academic Preparation	43
<b>Degrees Conferred</b>	<b>44</b>
All Degree Types	45
Bachelor Degrees by Gender	46
Bachelor Degrees by Ethnicity	47
Bachelor Degrees by Major Field of Study & College	48
Bachelor Degrees by First Generation College Status & Income	49
Time-to-Degree/Academic Performance for Students Who Entered UCSD from High School	50
Time-to-Degree/Academic Performance for Students Who Entered UCSD from a Two-Year Community College	51
<b>Appendix: Undergraduate Major Fields of Study/ Academic Departments</b>	<b>52</b>



**Total  
Campus  
Enrollment**

# ■ TOTAL CAMPUS ENROLLMENT

Nearly thirty thousand students enrolled at UCSD in fall 2011 - showing an increase of 36% over the past decade. UCSD enrolled 23,046 undergraduate students, and 6,278 graduate and medical students.

Table 1.

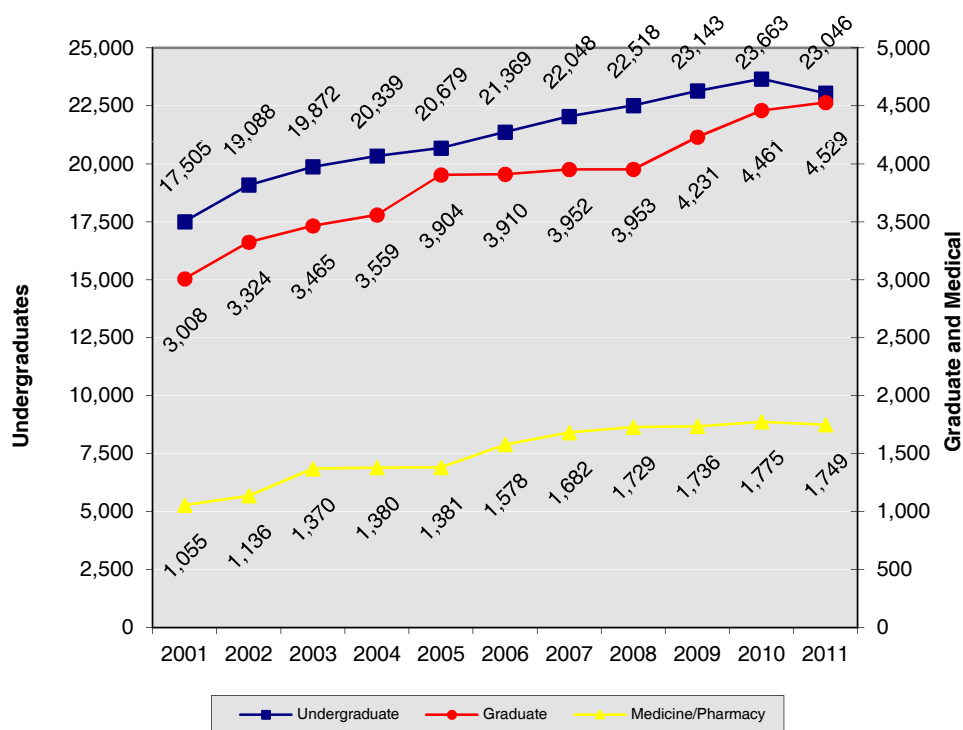
## Total Campus Enrollment: The Past Decade Fall Quarter

UCSD Enrollment	2001	2006	2007	2008	2009	2010	2011	10 Year Δ
• Undergraduate	17,505	21,369	22,048	22,518	23,143	23,663	23,046	+32%
• Graduate *	3,008	3,910	3,952	3,953	4,231	4,461	4,529	+51%
• Medicine/Pharmacy	1,055	1,578	1,682	1,729	1,736	1,775	1,749	+66%
<b>Total Campus Enrollment</b>	<b>21,568</b>	<b>26,857</b>	<b>27,682</b>	<b>28,200</b>	<b>29,110</b>	<b>29,899</b>	<b>29,324</b>	<b>+36%</b>

\* includes Teacher Education Program.

Figure 1.

## Total Campus Enrollment: The Past Decade Fall Quarter





**Total  
Undergraduate  
Enrollment**

# ■ Undergraduate Enrollment

Undergraduate enrollments have increased by 32% over the past decade. The majority of undergraduate students (71%) at UCSD are upper division.

Table 2.

## Undergraduate Enrollment by Class Level Fall Quarter

The Undergraduates	2001	2006	2007	2008	2009	2010	2011	10 Year Δ
• Lower Division	<b>7,214</b> 41%	<b>8,175</b> 38%	<b>8,572</b> 39%	<b>7,995</b> 36%	<b>7,558</b> 33%	<b>7,153</b> 30%	<b>6,649</b> 29%	<b>-8%</b>
Freshman	4,185 24%	4,535 21%	4,179 19%	4,084 18%	3,578 15%	3,679 16%	3,328 14%	-20%
Sophomore	3,029 17%	3,640 17%	4,393 20%	3,911 17%	3,980 17%	3,474 15%	3,321 14%	+10%
• Upper Division	<b>10,291</b> 59%	<b>13,194</b> 62%	<b>13,476</b> 61%	<b>14,523</b> 64%	<b>15,585</b> 67%	<b>16,510</b> 70%	<b>16,397</b> 71%	<b>+59%</b>
Junior	4,705 27%	5,659 26%	5,827 26%	6,570 29%	6,441 28%	6,992 30%	6,547 28%	+39%
Senior	5,586 32%	7,535 35%	7,649 35%	7,953 35%	9,144 40%	9,518 40%	9,850 43%	+76%
<b>Total UG Enrollment</b>	<b>17,505</b>	<b>21,369</b>	<b>22,048</b>	<b>22,518</b>	<b>23,143</b>	<b>23,663</b>	<b>23,046</b>	<b>+32%</b>

Figure 2.

## Total Undergraduate Enrollment Trends by Class Level Fall Quarter

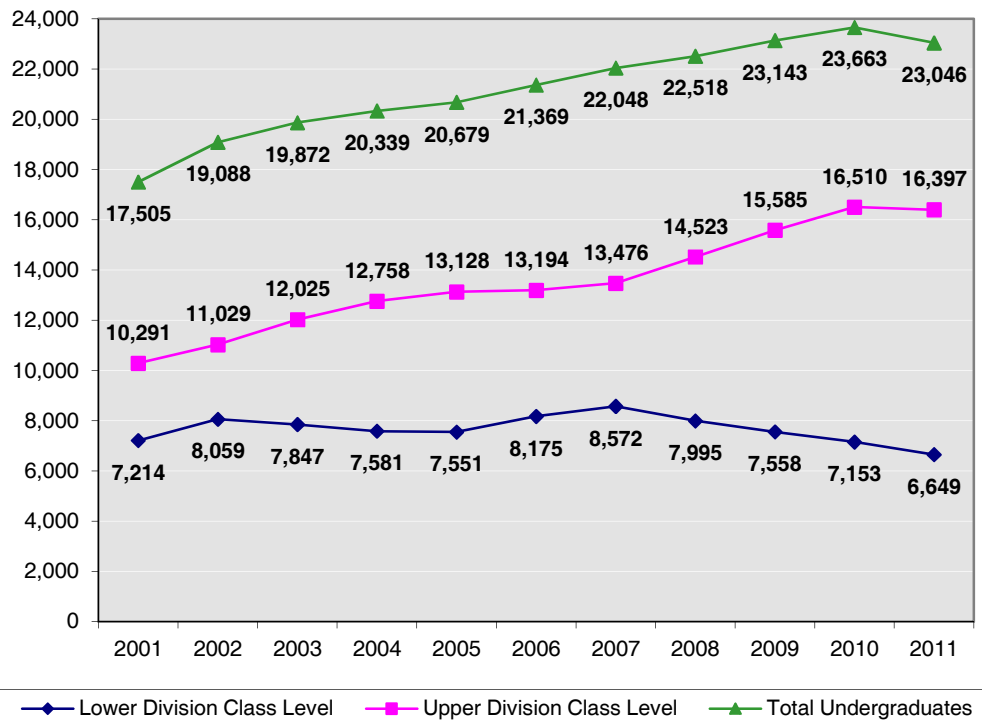




Table 3.

**Undergraduates by Gender** Fall Quarter

Gender	2001	2006	2007	2008	2009	2010	2011	10 Year Δ
• Female	9,105 52%	11,164 52%	11,587 53%	11,743 52%	12,004 52%	12,068 51%	11,646 51%	+28%
• Male	8,400 48%	10,205 48%	10,461 47%	10,775 48%	11,139 48%	11,595 49%	11,400 49%	+36%
<b>Total UG Enrollment</b>	<b>17,505</b>	<b>21,369</b>	<b>22,048</b>	<b>22,518</b>	<b>23,143</b>	<b>23,663</b>	<b>23,046</b>	<b>+32%</b>

Women continue to outnumber men by approximately two percent.

Figure 3.

**Undergraduate Enrollment by Gender** Fall Quarter

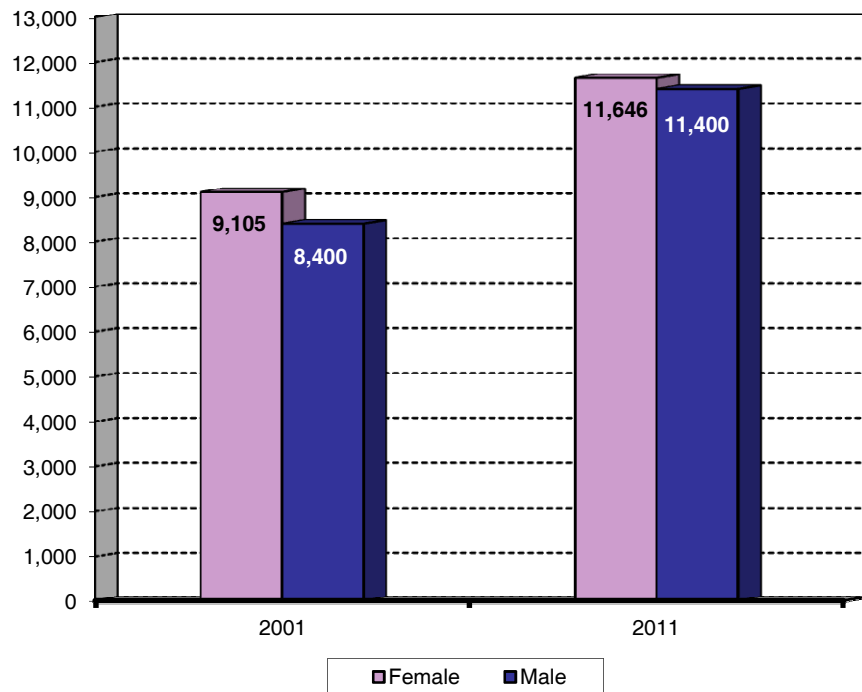


Table 4.

**Undergraduates by Ethnicity** Fall Quarter

Ethnicity	2001	2006	2007	2008	2009	2010	2011	10 Year Δ
• African-American	211 1%	276 1%	326 1%	340 2%	368 2%	420 2%	442 2%	+109%
• Asian	5,554 32%	8,287 39%	9,072 41%	9,835 44%	10,248 44%	10,589 45%	10,142 44%	+83%
• Mexican-American	1,322 8%	1,844 9%	1,997 9%	2,159 10%	2,344 10%	2,557 11%	2,787 12%	+111%
• Filipino	896 5%	1,058 5%	1,065 5%	1,052 5%	1,035 4%	986 4%	1,009 4%	+13%
• Latino	375 2%	567 3%	621 3%	626 3%	667 3%	705 3%	792 3%	+111%
• Native-American	81 0%	99 0%	91 0%	90 0%	92 0%	117 0%	111 0%	+37%
• Caucasian	6,652 38%	6,557 31%	6,274 28%	6,028 27%	5,986 26%	5,883 25%	5,584 24%	-16%
• Other/Undeclared	2,414 14%	2,681 13%	2,602 12%	2,388 11%	2,403 10%	2,406 10%	2,179 9%	-10%
<b>Total UG Enrollment</b>	<b>17,505</b>	<b>21,369</b>	<b>22,048</b>	<b>22,518</b>	<b>23,143</b>	<b>23,663</b>	<b>23,046</b>	<b>+32%</b>

The undergraduate student body at UCSD is ethnically diverse; approximately 66% of undergraduates are students of color.

Figure 4.

**Undergraduate Enrollment by Ethnicity** Fall Quarter

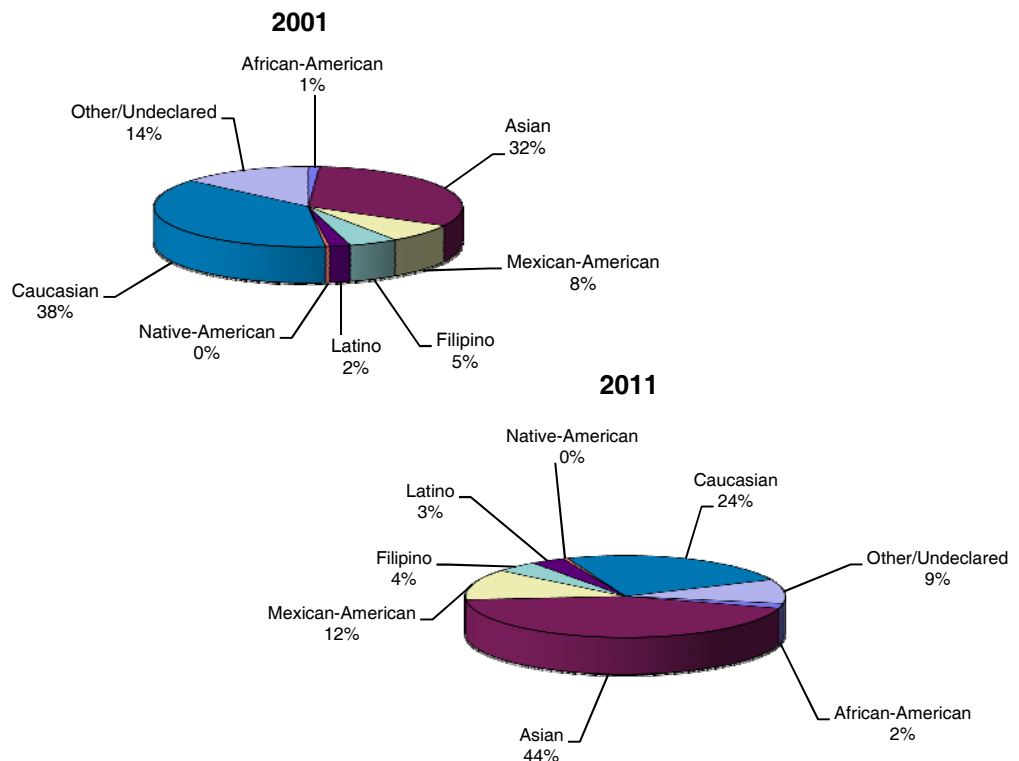


Table 5.

**Undergraduates by Major Field of Study** Fall Quarter

Major Field of Study	2001	2006	2007	2008	2009	2010	2011	10 Year Δ
• Arts	931 5%	826 4%	773 4%	808 4%	779 3%	768 3%	690 3%	-26%
• Humanities	740 4%	936 4%	922 4%	858 4%	831 4%	843 4%	766 3%	+4%
• Engineering	3,855 22%	3,820 18%	3,717 17%	3,861 17%	4,083 18%	4,338 18%	4,668 20%	+21%
• Science/Math	1,217 7%	1,935 9%	2,041 9%	1,873 8%	1,778 8%	2,234 9%	2,363 10%	+94%
• Biology	3,037 17%	4,273 20%	4,776 22%	5,294 24%	5,768 25%	5,140 22%	4,314 19%	+42%
• Social Science	5,830 33%	7,610 36%	7,856 36%	8,395 37%	8,725 38%	8,950 38%	8,792 38%	+51%
• Undec./Special	1,895 11%	1,969 9%	1,963 9%	1,429 6%	1,179 5%	1,390 6%	1,453 6%	-23%
<b>Total UG Enrollment</b>	<b>17,505</b>	<b>21,369</b>	<b>22,048</b>	<b>22,518</b>	<b>23,143</b>	<b>23,663</b>	<b>23,046</b>	<b>+32%</b>

The social sciences continue to be the most popular undergraduate field of study at UCSD, followed by engineering and biology.

Figure 5.

**Undergraduate Enrollment by Major Field of Study** Fall Quarter

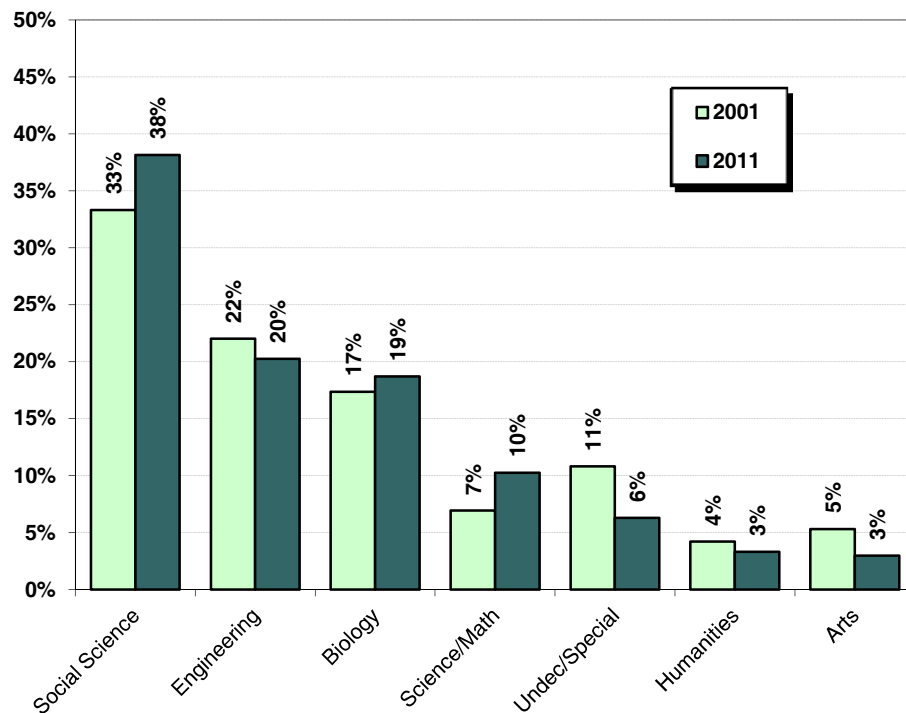


Table 6.

**Undergraduates by Major Department** **Fall Quarter**  
**Ten Most Populous Departments**

2001			2011		
Major Department	n	%	Major Department	n	%
Biology	3,037	17.3%	Biology	4,314	18.7%
Economics	1,456	8.3%	Economics	2,426	10.5%
Electrical & Computer Eng. (ECE)	1,262	7.2%	Psychology	1,545	6.7%
Computer Science & Eng. (CSE)	1,076	6.1%	Chemistry	1,424	6.2%
Political Science	997	5.7%	Computer Science & Eng. (CSE)	1,201	5.2%
Psychology	965	5.5%	Political Science	1,166	5.1%
Communications	783	4.5%	Mechanical & Aerospace Eng.	1,142	5.0%
Visual Arts	666	3.8%	Communications	890	3.9%
Bioengineering*	641	3.7%	International Studies	769	3.3%
Human Development*	586	3.3%	Bioengineering	731	3.2%
<b>Other Departments</b>	<b>4,146</b>	<b>23.7%</b>	<b>Other Departments</b>	<b>6,454</b>	<b>28.0%</b>
<b>Undeclared Majors</b>	<b>1,890</b>	<b>10.8%</b>	<b>Undeclared Majors</b>	<b>984</b>	<b>4.3%</b>
<b>TOTAL</b>	<b>17,505</b>	<b>100.0%</b>	<b>TOTAL</b>	<b>23,046</b>	<b>100.0%</b>

Similar to 2001, the most popular undergraduate major at UCSD in 2011 is biology. Economics is the second most popular undergraduate major, followed by psychology.

Figure 6.

**Ten Most Populous Departments** **Fall Quarter**

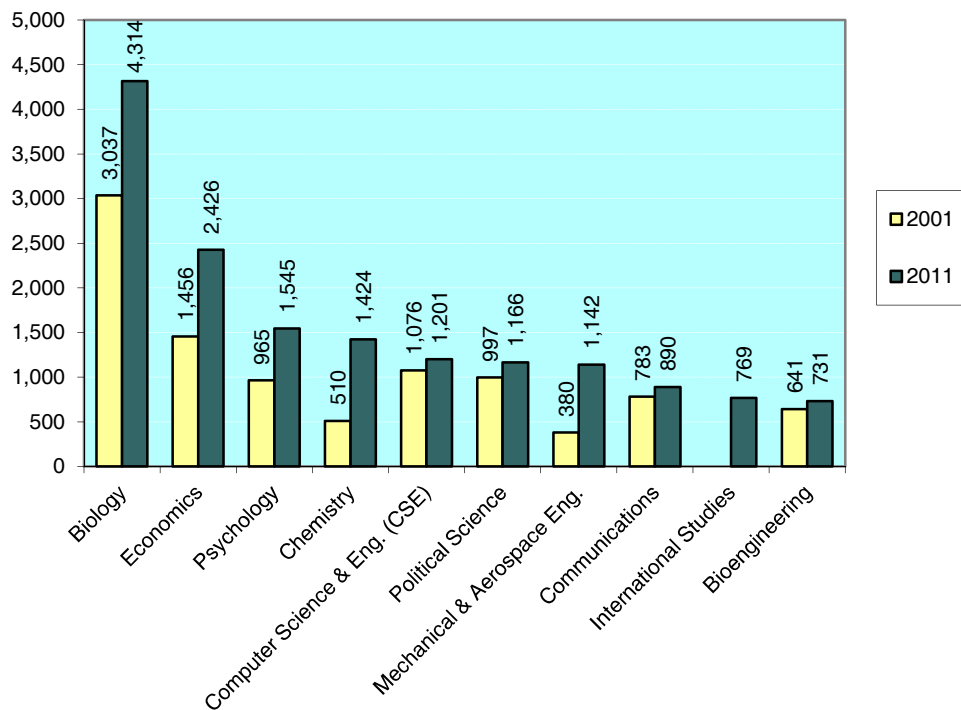


Table 7.

**Undergraduates by College** Fall Quarter

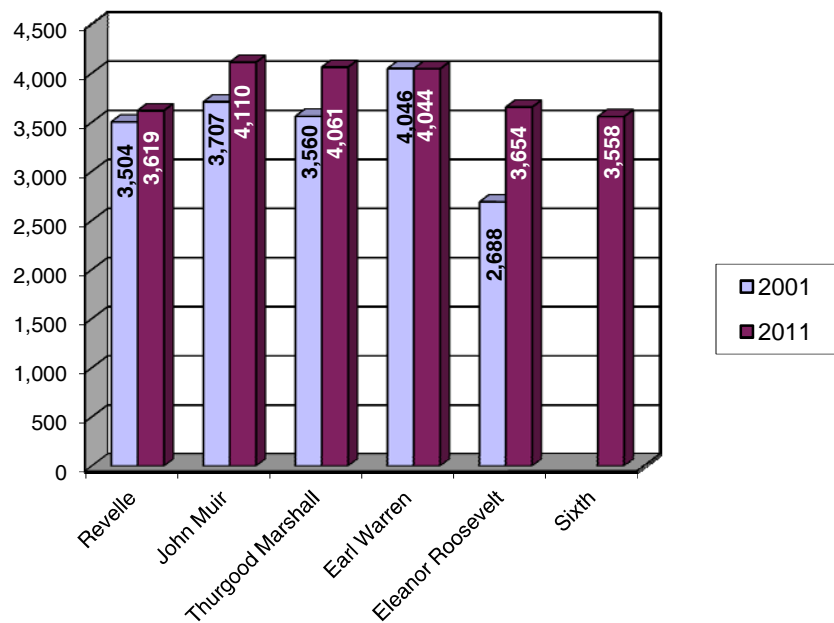
College	2001	2006	2007	2008	2009	2010	2011	10 Year Δ
• Revelle	3,504 21%	3,627 17%	3,792 17%	3,753 17%	3,757 16%	3,749 16%	3,619 16%	+3%
• John Muir	3,707 22%	4,088 19%	4,194 19%	4,164 18%	4,171 18%	4,304 18%	4,110 18%	+11%
• Thurgood Marshall	3,560 22%	3,769 18%	3,725 17%	3,905 17%	3,962 17%	4,084 17%	4,061 18%	+14%
• Earl Warren	4,046 25%	4,151 19%	4,132 19%	4,031 18%	4,162 18%	4,259 18%	4,044 18%	-0%
• Eleanor Roosevelt	2,688 16%	3,376 16%	3,422 16%	3,564 16%	3,687 16%	3,739 16%	3,654 16%	+36%
• Sixth*	NA NA	2,358 11%	2,783 13%	3,101 14%	3,404 15%	3,528 15%	3,558 15%	NA
<b>Total UG Enrollment</b>	<b>17,505</b>	<b>21,369</b>	<b>22,048</b>	<b>22,518</b>	<b>23,143</b>	<b>23,663</b>	<b>23,046</b>	

\* Note: Sixth College enrolled its first class of undergraduates in 2002.

Currently, Earl Warren, Thurgood Marshall and John Muir enroll the largest number of undergraduate students.

Figure 7.

**Undergraduate Enrollments by College** Fall Quarter





**Academic  
Profile:  
Undergraduates**

# Academic Profile: Total Undergraduate Population

Table 8.

## Academic Profile Summary Fall Quarter

Undergraduates	2001	2006	2007	2008	2009	2010	2011
• UCSD GPA	3.02	3.01	3.01	3.02	3.03	3.04	3.05
GPA $\geq$ 3.5	18.2%	18.3%	18.1%	18.8%	19.6%	20.3%	21.5%
3.0 $\leq$ GPA < 3.5	35.5%	35.0%	35.5%	35.2%	35.3%	35.4%	34.7%
2.5 $\leq$ GPA < 3.0	30.8%	30.2%	30.2%	30.1%	29.6%	29.1%	28.9%
2.0 $\leq$ GPA < 2.5	13.1%	13.8%	13.6%	13.4%	13.2%	13.0%	12.8%
GPA < 2.0	2.4%	2.7%	2.5%	2.5%	2.3%	2.2%	2.0%

The mean grade point average (GPA) for all undergraduates at UCSD in 2011 is 3.05 (B); approximately 22% earn a GPA of 3.50 (B+) or higher.

Figure 8.

## Proportion of Student Body within GPA Ranges Fall Quarter

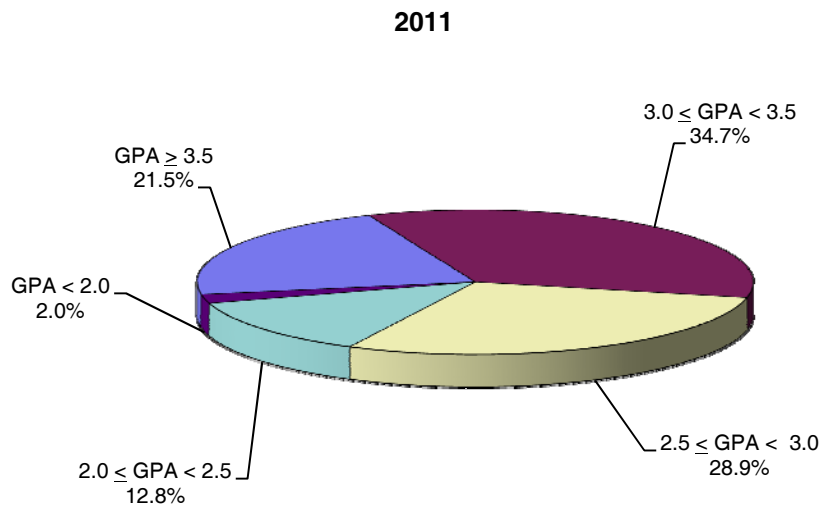


Table 9.

**Academic Profile by Class Level** **Fall Quarter**

Undergraduates	2001	2006	2007	2008	2009	2010	2011
• Freshman*							
Freshman GPA	2.96	2.89	2.92	2.87	2.90	2.92	2.93
GPA $\geq$ 3.5	23.6%	19.5%	20.3%	19.0%	21.2%	21.4%	21.6%
3.0 $\leq$ GPA < 3.5	32.3%	32.0%	32.2%	31.2%	30.4%	31.4%	32.0%
2.5 $\leq$ GPA < 3.0	23.4%	23.8%	25.7%	24.0%	24.2%	23.6%	23.7%
2.0 $\leq$ GPA < 2.5	13.2%	16.2%	13.8%	15.6%	14.6%	15.6%	14.2%
GPA < 2.0	7.4%	8.6%	8.1%	10.3%	9.6%	8.1%	8.4%
• Sophomore							
Sophomore GPA	3.02	2.97	3.00	3.00	3.00	2.99	3.02
GPA $\geq$ 3.5	18.8%	15.1%	16.6%	16.4%	17.7%	18.2%	19.7%
3.0 $\leq$ GPA < 3.5	35.8%	36.2%	35.2%	34.8%	34.9%	33.2%	33.9%
2.5 $\leq$ GPA < 3.0	29.4%	30.5%	32.0%	32.5%	30.3%	31.0%	31.1%
2.0 $\leq$ GPA < 2.5	13.0%	15.6%	14.2%	14.4%	14.7%	14.9%	13.0%
GPA < 2.0	2.9%	2.7%	1.9%	1.9%	2.4%	2.7%	2.3%
• Junior							
Junior GPA	3.03	3.00	3.00	3.02	3.02	3.04	3.06
GPA $\geq$ 3.5	18.4%	18.1%	18.3%	19.7%	19.1%	21.1%	22.8%
3.0 $\leq$ GPA < 3.5	35.9%	34.4%	35.8%	34.8%	34.8%	35.1%	34.5%
2.5 $\leq$ GPA < 3.0	31.2%	31.3%	28.9%	30.3%	30.5%	28.2%	27.5%
2.0 $\leq$ GPA < 2.5	12.5%	12.6%	13.4%	12.2%	12.8%	13.2%	12.6%
GPA < 2.0	2.1%	3.6%	3.5%	2.9%	2.7%	2.4%	2.6%
• Senior							
Senior GPA	3.03	3.05	3.05	3.05	3.07	3.06	3.07
GPA $\geq$ 3.5	18.3%	20.3%	19.7%	19.7%	21.0%	20.8%	21.9%
3.0 $\leq$ GPA < 3.5	36.4%	35.9%	36.3%	36.6%	36.4%	36.8%	35.6%
2.5 $\leq$ GPA < 3.0	31.2%	29.3%	29.9%	29.0%	28.8%	28.9%	28.7%
2.0 $\leq$ GPA < 2.5	12.5%	12.9%	12.4%	12.8%	12.3%	12.0%	12.4%
GPA < 2.0	1.6%	1.6%	1.7%	1.9%	1.5%	1.5%	1.4%
<b>Undergraduate GPA</b>	<b>3.02</b>	<b>3.01</b>	<b>3.01</b>	<b>3.02</b>	<b>3.03</b>	<b>3.04</b>	<b>3.05</b>

There is a positive relationship between student class level and grade point average; as students advance in standing, they tend to earn a higher grade point average.

\* Note: Freshman GPA data reflect grades for Winter quarter of first year enrolled.



Table 10.

**Academic Profile by Major Field of Study** **Fall Quarter**

Undergraduates	2001	2006	2007	2008	2009	2010	2011
• Arts							
Arts GPA	3.12	3.22	3.19	3.22	3.20	3.20	3.19
GPA $\geq$ 3.5	20.9%	28.0%	28.6%	30.0%	29.0%	29.2%	29.2%
3.0 $\leq$ GPA < 3.5	44.5%	45.0%	39.8%	41.7%	40.7%	39.6%	38.7%
2.5 $\leq$ GPA < 3.0	24.6%	21.4%	23.4%	22.3%	22.0%	23.0%	23.5%
2.0 $\leq$ GPA < 2.5	9.1%	4.3%	7.5%	5.3%	7.5%	7.5%	7.8%
GPA < 2.0	1.0%	1.4%	0.6%	0.6%	0.8%	0.7%	0.8%
• Humanities							
Humanities GPA	3.14	3.09	3.13	3.14	3.17	3.17	3.18
GPA $\geq$ 3.5	24.9%	21.5%	25.3%	27.3%	28.1%	28.7%	31.1%
3.0 $\leq$ GPA < 3.5	39.9%	40.6%	40.4%	39.6%	40.5%	39.7%	35.5%
2.5 $\leq$ GPA < 3.0	27.0%	24.6%	22.3%	22.1%	22.3%	20.5%	24.2%
2.0 $\leq$ GPA < 2.5	6.6%	10.5%	9.4%	9.6%	6.8%	9.6%	7.1%
GPA < 2.0	1.6%	2.8%	2.6%	1.5%	2.3%	1.5%	2.1%
• Engineering							
Engineering GPA	2.99	3.00	3.00	3.00	3.00	3.00	3.04
GPA $\geq$ 3.5	16.9%	18.0%	18.0%	18.8%	18.9%	18.8%	20.7%
3.0 $\leq$ GPA < 3.5	32.1%	33.1%	32.8%	32.7%	31.2%	32.4%	33.5%
2.5 $\leq$ GPA < 3.0	34.5%	31.6%	31.5%	31.9%	32.9%	32.2%	31.1%
2.0 $\leq$ GPA < 2.5	14.5%	14.8%	15.3%	14.3%	14.8%	14.5%	12.9%
GPA < 2.0	2.0%	2.5%	2.4%	2.4%	2.1%	2.0%	1.7%
• Science/Math							
Science/Math GPA	2.96	2.94	2.95	2.98	3.01	3.01	3.01
GPA $\geq$ 3.5	19.3%	15.9%	16.6%	17.3%	20.1%	18.7%	18.8%
3.0 $\leq$ GPA < 3.5	27.0%	31.9%	32.9%	33.0%	32.0%	34.7%	33.4%
2.5 $\leq$ GPA < 3.0	32.6%	30.1%	31.0%	30.9%	30.1%	29.4%	30.1%
2.0 $\leq$ GPA < 2.5	17.8%	18.8%	16.5%	16.1%	15.1%	14.7%	14.9%
GPA < 2.0	3.2%	3.3%	2.9%	2.7%	2.7%	2.4%	2.8%
• Biology							
Biology GPA	3.04	3.05	3.04	3.04	3.03	3.07	3.11
GPA $\geq$ 3.5	20.2%	20.0%	18.7%	18.5%	18.6%	20.5%	24.6%
3.0 $\leq$ GPA < 3.5	35.2%	34.4%	35.9%	36.1%	36.1%	36.0%	34.8%
2.5 $\leq$ GPA < 3.0	29.9%	33.2%	32.7%	31.8%	31.3%	31.3%	29.1%
2.0 $\leq$ GPA < 2.5	12.2%	10.8%	10.7%	11.9%	12.1%	10.5%	10.4%
GPA < 2.0	2.5%	1.6%	2.0%	1.7%	1.9%	1.6%	1.2%
• Social Science							
Social Science GPA	3.00	2.99	3.00	2.99	3.02	3.03	3.03
GPA $\geq$ 3.5	16.4%	16.7%	17.0%	17.7%	19.0%	19.9%	19.9%
3.0 $\leq$ GPA < 3.5	37.4%	35.8%	36.3%	35.5%	36.1%	35.9%	35.3%
2.5 $\leq$ GPA < 3.0	30.5%	29.7%	29.2%	29.5%	28.4%	27.6%	28.2%
2.0 $\leq$ GPA < 2.5	13.3%	14.7%	14.7%	14.2%	14.1%	14.0%	14.0%
GPA < 2.0	2.3%	3.1%	2.8%	3.1%	2.5%	2.6%	2.5%
<b>Undergraduate GPA</b>	<b>3.02</b>	<b>3.01</b>	<b>3.01</b>	<b>3.02</b>	<b>3.03</b>	<b>3.04</b>	<b>3.05</b>

Grade point averages vary by major field of study; the highest average GPAs are generally associated with arts and humanities majors.



**New  
Students**

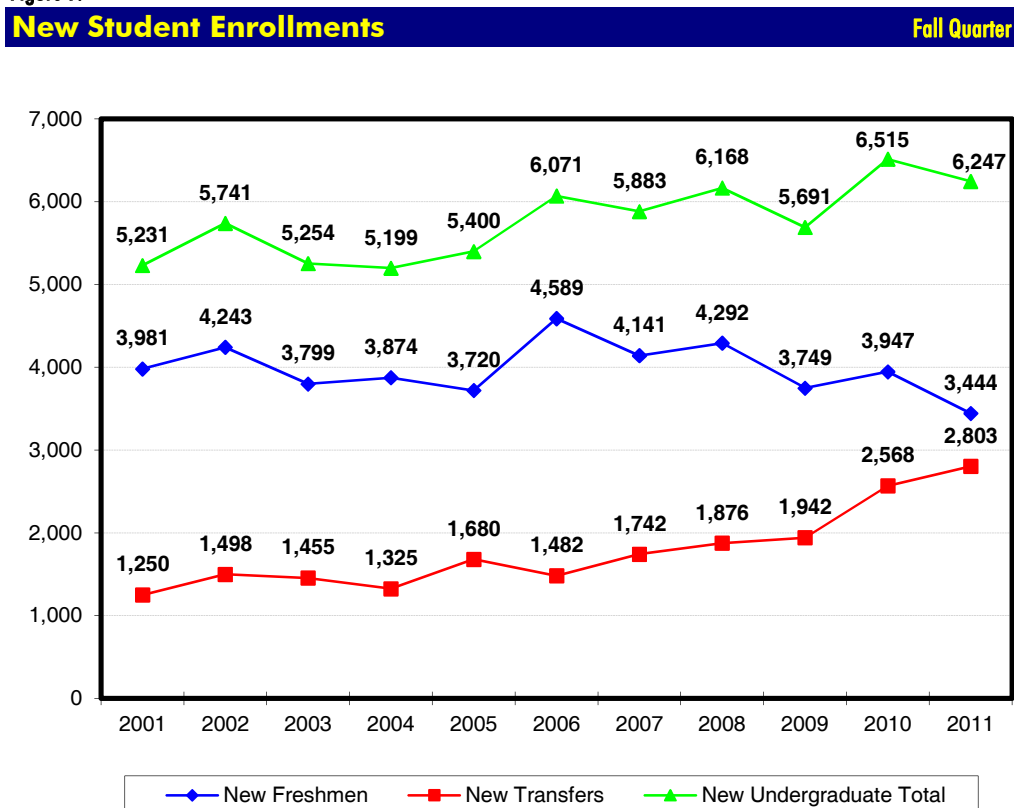
# ■ New Students: The Past Decade

New student enrollments have increased from 5,231 in 2001 to 6,247 in 2011, representing an overall increase of 19%. Of the new student enrollment, 55% are first-time freshmen and 45% are transfer students, representing the largest cohort of incoming transfer students to date.

Table 11.

New Student Enrollments								Fall Quarter
New Students	2001	2006	2007	2008	2009	2010	2011	10 Year Δ
• First-Time Freshmen	3,981 76%	4,589 76%	4,141 70%	4,292 70%	3,749 66%	3,947 61%	3,444 55%	-13%
• New Transfers	1,250 24%	1,482 24%	1,742 30%	1,876 30%	1,942 34%	2,568 39%	2,803 45%	+124%
<b>New Student Total</b>	<b>5,231</b>	<b>6,071</b>	<b>5,883</b>	<b>6,168</b>	<b>5,691</b>	<b>6,515</b>	<b>6,247</b>	<b>+19%</b>

Figure 9.





**First-Time  
Freshmen**

# ■ First-Time Freshmen

Over fifty-three thousand high school students applied for admission to UCSD for fall of 2011. Of these students, 36% were admitted. A total of 3,444 of the admitted students registered for enrollment, showing a yield of 18%.

Table 12.

## Applicants, Admits & Registered Fall Quarter

First-Time Freshmen	2001	2006	2007	2008	2009	2010	2011	10 Year Δ
• Applicants	38,187	43,586	45,073	47,365	47,046	48,093	53,448	+40%
• Admits	16,493	21,345	19,178	19,717	17,679	18,356	18,976	+15%
Admit/App. Rate	43%	49%	43%	42%	38%	38%	36%	
• Registered	3,981	4,589	4,141	4,292	3,749	3,947	3,444	-13%
Reg./Admit Rate	24%	21%	22%	22%	21%	22%	18%	

Figure 10.

## Applicants, Admits & Registered Fall Quarter

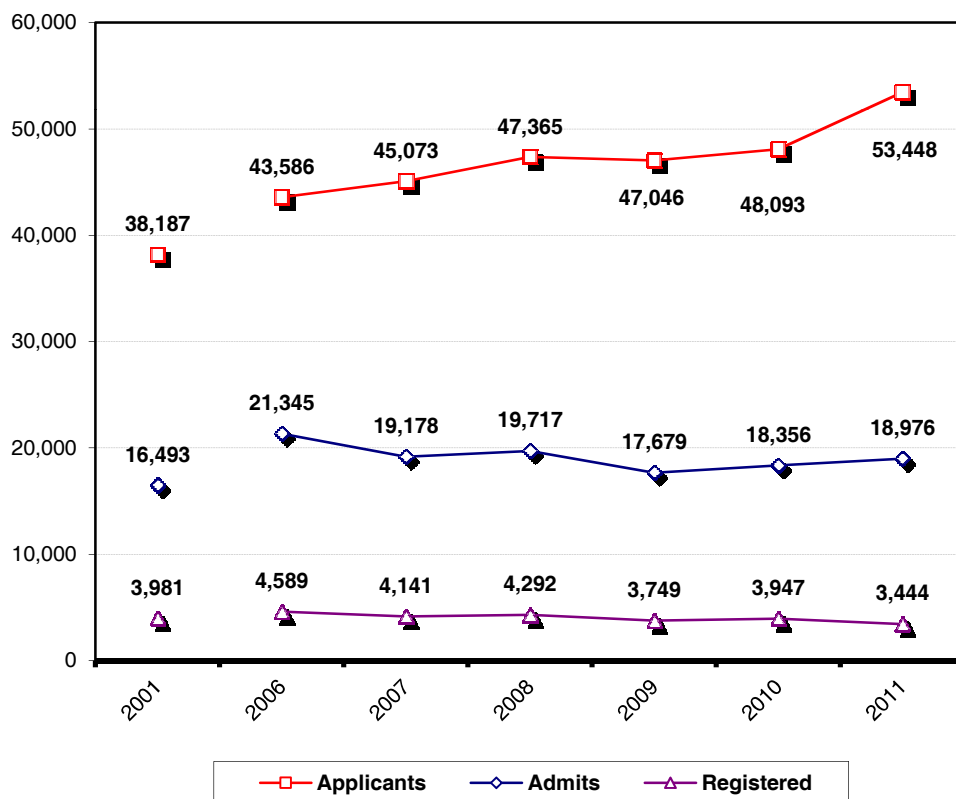


Table 13.

**First-Time Freshmen by Gender** Fall Quarter

Gender	2001	2006	2007	2008	2009	2010	2011	10 Year Δ
• Female	2,152 54%	2,558 56%	2,303 56%	2,399 56%	2,054 55%	2,089 53%	1,861 54%	-14%
• Male	1,829 46%	2,031 44%	1,838 44%	1,893 44%	1,695 45%	1,858 47%	1,583 46%	-13%
<b>Total</b>	<b>3,981</b>	<b>4,589</b>	<b>4,141</b>	<b>4,292</b>	<b>3,749</b>	<b>3,947</b>	<b>3,444</b>	<b>-13%</b>

At 54%, women continue to represent the majority of first-time freshmen at UCSD.

Figure 11.

**First-Time Freshmen by Gender** Fall Quarter

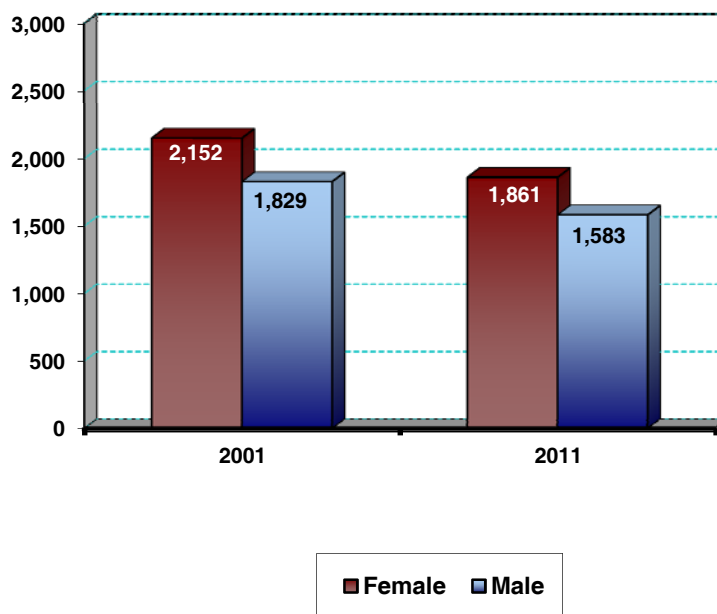


Table 14.

**First-Time Freshmen by Ethnicity** Fall Quarter

Ethnicity	2001	2006	2007	2008	2009	2010	2011	10 Year Δ
• African-American	33 1%	44 1%	72 2%	52 1%	46 1%	61 2%	62 2%	+88%
• Asian	1,452 36%	2,080 45%	1,945 47%	2,106 49%	1,826 49%	1,935 49%	1,558 45%	+7%
• Mexican-American	254 6%	388 8%	431 10%	441 10%	454 12%	475 12%	572 17%	+125%
• Filipino	202 5%	221 5%	183 4%	180 4%	136 4%	161 4%	180 5%	-11%
• Latino	68 2%	122 3%	126 3%	105 2%	108 3%	119 3%	151 4%	+122%
• Native-American	9 0%	22 0%	9 0%	15 0%	11 0%	22 1%	8 0%	-11%
• Caucasian	1,472 37%	1,283 28%	989 24%	1,009 24%	816 22%	792 20%	696 20%	-53%
• Other/Missing	491 12%	429 9%	386 9%	384 9%	352 9%	382 10%	217 6%	-56%
<b>Total</b>	<b>3,981</b>	<b>4,589</b>	<b>4,141</b>	<b>4,292</b>	<b>3,749</b>	<b>3,947</b>	<b>3,444</b>	<b>-13%</b>

The 2011 incoming freshman class is ethnically diverse; approximately 73% of first-time freshmen are students of color.

Figure 12.

**First-Time Freshmen by Ethnicity** Fall Quarter

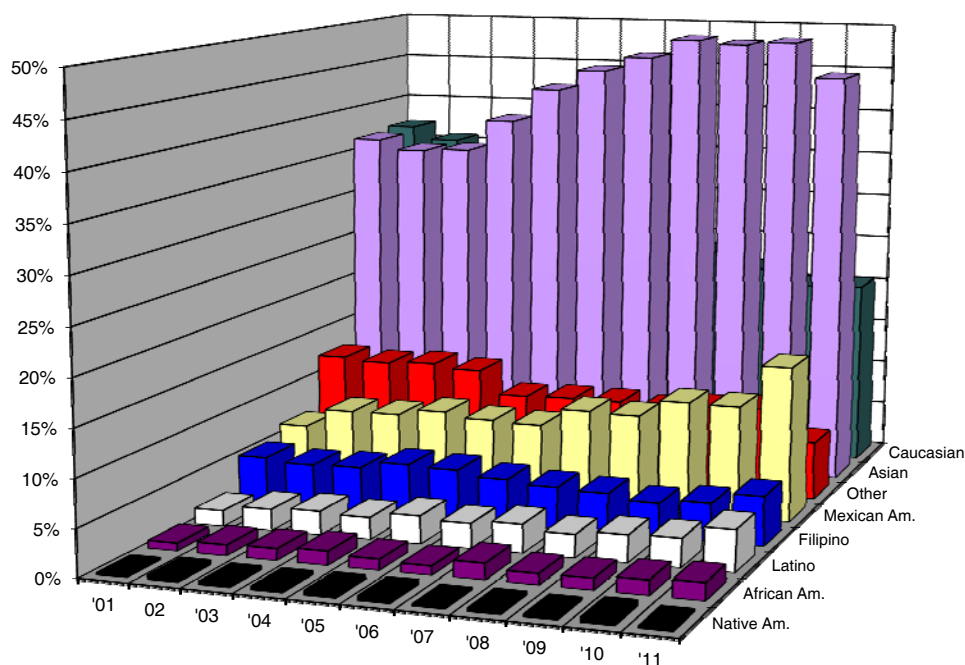


Table 15.

**First-Time Freshmen by Major Field of Study** Fall Quarter

Major Field of Study	2001	2006	2007	2008	2009	2010	2011	10 Year Δ
• Arts	115 3%	105 2%	76 2%	99 2%	74 2%	84 2%	67 2%	-42%
• Humanities	102 3%	151 3%	116 3%	115 3%	78 2%	89 2%	65 2%	-36%
• Engineering	1,035 26%	872 19%	720 17%	879 20%	856 23%	823 21%	913 27%	-12%
• Science/Math	260 7%	465 10%	462 11%	393 9%	463 12%	581 15%	352 10%	+35%
• Biology	587 15%	807 18%	851 21%	926 22%	625 17%	639 16%	664 19%	+13%
• Social Science	697 18%	1,024 22%	900 22%	986 23%	862 23%	968 25%	773 22%	+11%
• Undeclared/Missing/ Special	1,185 30%	1,165 25%	1,016 25%	894 21%	791 21%	763 19%	610 18%	-49%
<b>Total</b>	<b>3,981</b>	<b>4,589</b>	<b>4,141</b>	<b>4,292</b>	<b>3,749</b>	<b>3,947</b>	<b>3,444</b>	<b>-13%</b>

The most popular declared field of study for first-time freshmen is engineering (27%), followed by the social sciences (22%). Approximately, 18% of new freshmen are considered undeclared upon admission.

Figure 13.

**First-Time Freshmen by Major Field of Study** Fall Quarter

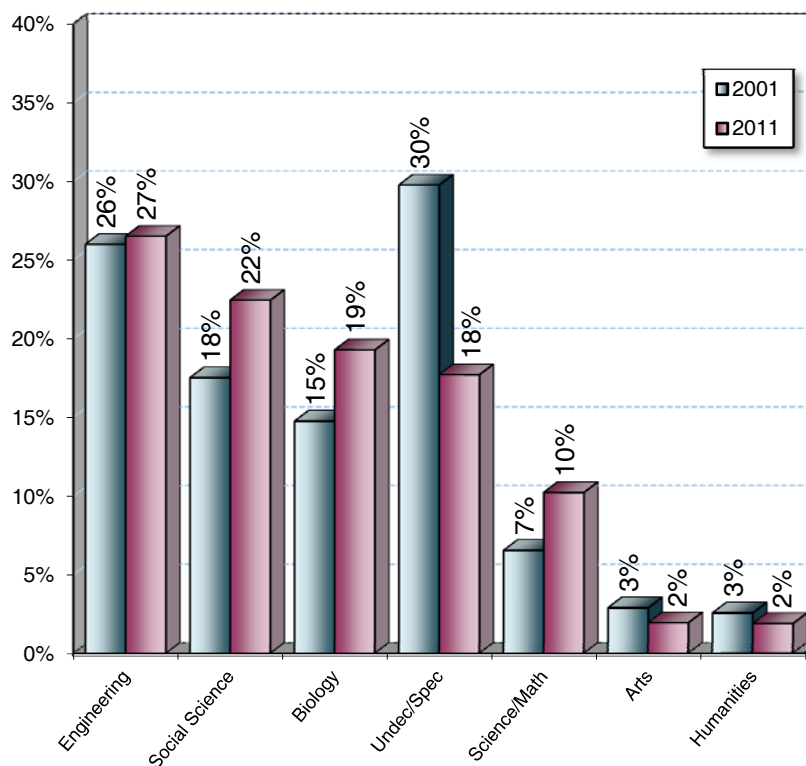




Table 16.

**First-Time Freshmen  
by Major Department at Time of Admission** **Fall Quarter**

2001			2011		
Major Department	n	%	Major Department	n	%
Biology	587	14.7%	Biology	664	19.3%
Electrical & Computer Eng. (ECE)	351	8.8%	Chemistry	201	5.8%
Bioengineering	236	5.9%	Mechanical & Aerospace Eng.	197	5.7%
Computer Science & Eng. (CSE)	216	5.4%	Computer Science & Eng. (CSE)	194	5.6%
Political Science	176	4.4%	Psychology	194	5.6%
Economics	154	3.9%	Economics	182	5.3%
Psychology	139	3.5%	Bioengineering	166	4.8%
Mechanical & Aerospace Eng.	136	3.4%	Electrical & Computer Eng. (ECE)	143	4.2%
Chemistry & Biochemistry	112	2.8%	Political Science	109	3.2%
Mathematics	111	2.8%	Structural Engineering	95	2.8%
Communications	110	2.8%	Mathematics	92	2.7%
Structural Engineering	74	1.9%	International Studies	81	2.4%
Visual Arts	70	1.8%	Chemical Engineering	73	2.1%
Literature	54	1.4%	Communications	54	1.6%
History	44	1.1%	Cognitive Science	53	1.5%
Physics	31	0.8%	Nano Engineering	45	1.3%
Theatre	26	0.7%	Literature	37	1.1%
Human Development	23	0.6%	Visual Arts	37	1.1%
Chemical Engineering	22	0.6%	Sociology	32	0.9%
Cognitive Science	22	0.6%	Anthropology	29	0.8%
Sociology	21	0.5%	Environmental Systems	27	0.8%
Music	19	0.5%	Physics	25	0.7%
Anthropology	18	0.5%	Theater	19	0.6%
Japanese Studies	8	0.2%	History	18	0.5%
Ethnic Studies	7	0.2%	Human Development	17	0.5%
<b>Subtotal</b>	<b>2,767</b>	<b>69.5%</b>	<b>Subtotal</b>	<b>2,784</b>	<b>80.8%</b>
<b>Other Majors</b>	<b>29</b>	<b>0.7%</b>	<b>Other Majors</b>	<b>50</b>	<b>1.5%</b>
<b>Undeclared Majors</b>	<b>1,185</b>	<b>29.8%</b>	<b>Undeclared Majors</b>	<b>610</b>	<b>17.7%</b>
<b>TOTAL</b>	<b>3,981</b>	<b>100.0%</b>	<b>TOTAL</b>	<b>3,444</b>	<b>100.0%</b>

Similar to 2001, biology is the most popular declared major among new freshmen. Approximately 19% of all new freshmen report majoring in biology.

Table 17.

<b>First-Time Freshmen by College</b>								<b>Fall Quarter</b>
College	2001	2006	2007	2008	2009	2010	2011	10 Year Δ
• Revelle	848 21%	736 16%	798 19%	701 16%	642 17%	635 16%	643 19%	-24%
• John Muir	811 20%	962 21%	644 16%	801 19%	623 17%	824 21%	559 16%	-31%
• Thurgood Marshall	803 20%	769 17%	703 17%	774 18%	604 16%	504 13%	514 15%	-36%
• Earl Warren	776 19%	691 15%	659 16%	615 14%	706 19%	741 19%	607 18%	-22%
• Eleanor Roosevelt	743 19%	723 16%	663 16%	801 19%	603 16%	598 15%	551 16%	-26%
• Sixth	NA NA	708 15%	674 16%	600 14%	571 15%	645 16%	570 17%	NA
<b>Total</b>	<b>3,981</b>	<b>4,589</b>	<b>4,141</b>	<b>4,292</b>	<b>3,749</b>	<b>3,947</b>	<b>3,444</b>	<b>-13%</b>

The largest group of incoming first-time freshmen come to UCSD from the Los Angeles area. Approximately 18% are from the San Francisco area. Eighty-three percent are from California.

Table 18.

<b>First-Time Freshmen by Home Location</b>								<b>Fall Quarter</b>
Home Location	2001	2006	2007	2008	2009	2010	2011	10 Year Δ
• San Diego	699 18%	591 13%	568 14%	554 13%	516 14%	499 13%	465 14%	-33%
• Los Angeles	1,641 41%	2,089 46%	1,902 46%	1,993 46%	1,695 45%	1,735 44%	1,411 41%	-14%
• San Francisco	879 22%	1,101 24%	950 23%	1,011 24%	938 25%	1,007 26%	618 18%	-30%
• Other CA	543 14%	477 10%	400 10%	384 9%	358 10%	359 9%	351 10%	-35%
• Out-of-State	131 3%	211 5%	169 4%	179 4%	123 3%	144 4%	226 7%	+73%
• International	88 2%	120 3%	152 4%	171 4%	119 3%	203 5%	373 11%	+324%
<b>Total</b>	<b>3,981</b>	<b>4,589</b>	<b>4,141</b>	<b>4,292</b>	<b>3,749</b>	<b>3,947</b>	<b>3,444</b>	<b>-13%</b>

Table 19.

**First-Time Freshmen by 1st Generation College Status** Fall Quarter

College Status	2001	2006	2007	2008	2009	2010	2011	10 Year Δ
• First Generation	858 22%	1,262 28%	1,383 33%	1,369 32%	1,261 34%	1,355 34%	1,228 36%	+43%
• Not First Generation	3,123 78%	3,327 72%	2,758 67%	2,923 68%	2,488 66%	2,592 66%	2,216 64%	-29%
<b>Total</b>	<b>3,981</b>	<b>4,589</b>	<b>4,141</b>	<b>4,292</b>	<b>3,749</b>	<b>3,947</b>	<b>3,444</b>	<b>-13%</b>

The majority (64%) of new freshmen have at least one parent who has graduated from a two-year junior college or four-year college/university.

Table 20.

**First-Time Freshmen by Income Group** Fall Quarter

Income	2001	2006	2007	2008	2009	2010	2011	10 Year Δ
• High (≥\$98,401)	1,114 28%	1,234 27%	943 23%	1,138 27%	970 26%	922 23%	929 27%	-17%
• Medium High (\$65,601 - \$98,400)	584 15%	566 12%	439 11%	442 10%	376 10%	373 9%	355 10%	-39%
• Medium Low (\$32,801 - \$65,600)	842 21%	985 21%	904 22%	891 21%	774 21%	857 22%	741 22%	-12%
• Low (≤\$32,800)	659 17%	994 22%	1,129 27%	1,096 26%	1,063 28%	1,137 29%	960 28%	+46%
• Missing	782 20%	810 18%	726 18%	725 17%	566 15%	658 17%	459 13%	-41%
<b>Total</b>	<b>3,981</b>	<b>4,589</b>	<b>4,141</b>	<b>4,292</b>	<b>3,749</b>	<b>3,947</b>	<b>3,444</b>	<b>-13%</b>

Approximately, 5% of first-time freshmen play UCSD athletics.

Table 21.

**First-Time Freshmen by Athletic Status** Fall Quarter

College Status	2001	2006	2007	2008	2009	2010	2011*	10 Year Δ
• Athlete	NA NA	166 4%	149 4%	175 4%	187 5%	184 5%	NA NA	NA
• Non-Athlete	NA NA	4,423 96%	3,992 96%	4,117 96%	3,562 95%	3,763 95%	NA NA	NA
<b>Total</b>	<b>3,981</b>	<b>4,141</b>	<b>4,141</b>	<b>4,292</b>	<b>3,749</b>	<b>3,947</b>	<b>3,444</b>	<b>-13%</b>

\* 2011 Athlete data not available until Winter Quarter 2012.


Table 22.

**Major\* Feeder High Schools for First-time Freshmen** Fall Quarter

High School	City	Number from H.S. Registered at UCSD in Fall 2011	Percent of UCSD's Total Freshman Enrollment	Average H.S. GPA of Registered Freshmen	Average SAT Reasoning Test of Registered Freshmen	High School Quintile Rank
Lowell High School	San Francisco	34	1.0%	3.880	1319	1st
Diamond Bar High School	Diamond Bar	29	0.8%	3.959	1355	1st
John Marshall High School	Los Angeles	24	0.7%	3.831	1086	4th
Lynbrook High School	San Jose	21	0.6%	4.050	1441	1st
Arcadia High School	Arcadia	20	0.6%	3.814	1357	1st
Mission San Jose High School	Fremont	20	0.6%	3.993	1417	1st
Mark Keppel High School	Alhambra	19	0.6%	3.856	1337	1st
Crescenta Valley High School	La Crescenta	17	0.5%	4.010	1299	1st
Granada Hills High School	Granada Hills	16	0.5%	3.900	1289	1st
Mira Mesa High School	San Diego	16	0.5%	4.187	1285	2nd
Monta Vista High School	Cupertino	16	0.5%	3.949	1376	1st
Cerritos High School	Cerritos	15	0.4%	3.984	1288	1st
Rancho Bernardo High School	San Diego	15	0.4%	4.005	1328	1st
Calexico High School	Calexico	14	0.4%	3.944	1035	4th
Torrey Pines High School	San Diego	14	0.4%	4.012	1433	1st
Troy High School	Fullerton	14	0.4%	3.721	1421	1st
Samuel F B Morse High School	San Diego	14	0.4%	4.011	1124	4th
Galileo High School	San Francisco	14	0.4%	3.926	1140	2nd
Alameda High School	Alameda	13	0.4%	4.021	1238	1st
Northwood High School	Irvine	13	0.4%	3.983	1387	1st
Abraham Lincoln High School	San Francisco	13	0.4%	3.840	1241	2nd
Skyline High School	Oakland	13	0.4%	3.981	1195	4th
Temple City High School	Temple City	13	0.4%	4.112	1307	1st
South High School	Torrance	13	0.4%	4.058	1361	1st
Walnut High School	Walnut	13	0.4%	3.938	1335	1st
Gretchen Whitney High School	Cerritos	12	0.3%	4.038	1365	1st
Eastlake High School	Chula Vista	12	0.3%	4.139	1251	2nd
Oxford Academy	Cypress	12	0.3%	3.955	1318	1st
Arnold O. Beckman High School	Irvine	12	0.3%	4.011	1328	1st
North Hollywood High School	North Hollywood	12	0.3%	3.635	1231	4th
University City High School	San Diego	12	0.3%	4.218	1257	2nd
Southwest High School	San Diego	12	0.3%	3.858	1017	4th
Magnolia High School	Anaheim	11	0.3%	3.781	1052	4th
University High School	Irvine	11	0.3%	3.943	1442	1st
Schurr High School	Montebello	11	0.3%	3.675	1141	4th
Rosemead High School	Rosemead	11	0.3%	3.986	1220	3rd
Mount Carmel High School	San Diego	11	0.3%	4.040	1296	1st
San Gabriel High School	San Gabriel	11	0.3%	3.978	1246	3rd
Gabrielino High School	San Gabriel	11	0.3%	3.964	1221	2nd
San Leandro High School	San Leandro	11	0.3%	3.962	1193	4th
San Marino High School	San Marino	11	0.3%	4.042	1352	1st
Saratoga High School	Saratoga	11	0.3%	3.817	1377	1st
<b>Subtotal (Number of High Schools=42)</b>		<b>617</b>	<b>17.9%</b>			
<b>Other High Schools (Number of High Schools=1,102)</b>		<b>2,827</b>	<b>82.1%</b>			
<b>Total (Number of High Schools=1,144)</b>		<b>3,444</b>	<b>100.0%</b>			

\* Eleven or more students

Lowell High School in the San Francisco area tops the list of major feeder schools for the fall 2011 freshman cohort.



**High School  
Grades and  
SAT Scores**

# Academic Preparation: A Decade of Change

Academic preparation of incoming freshmen, as measured by high school GPA and SAT scores, have remained high over the past decade. The average SAT score in 2011 is 1233, and the average GPA is 3.96.

Table 23.

## Freshman Cohort by HS GPA and SAT Score Averages Fall Quarter

First-Time Freshmen	2001	2006	2007	2008	2009	2010	2011
• HS GPA <sup>1</sup>	3.95	3.93	3.94	3.94	3.96	3.98	3.96
• SAT Reasoning (Critical Reading & Math)	1264	1243	1248	1252	1257	1265	1233
• SAT Reasoning (Critical Reading, Math & Writing)	NA	1851	1855	1865	1872	1886	1840

<sup>1</sup> GPAs may exceed 4.0 with credit given for honors courses.

<sup>2</sup> SAT Reasoning Test scores reflect the higher of ACT scores converted to SAT Scores.

Table 24.

## Freshman Cohort by Academic Indicator Ranges Fall Quarter

High School GPA Range	Percentage in Range		SAT Reasoning (Critical Reading & Math) Composite Score Range	Percentage in Range	
	2001	2011		2001	2011
• 4.0 - High	48%	53%	• 1500 - 1600	2%	3%
• 3.90 - 3.99	13%	12%	• 1300 - 1499	40%	34%
• 3.60 - 3.89	31%	27%	• 1200 - 1299	31%	27%
• 3.30 - 3.59	7%	7%	• 1000 - 1199	24%	27%
• Low - 3.29	<1%	1%	• Low - 999	3%	9%
<b>Total</b>	<b>100%</b>	<b>100%</b>	<b>Total</b>	<b>100%</b>	<b>100%</b>

Number of Honors Courses: 10th & 11th Grade	Percentage in Range		Number of College Preparatory (A-G) Courses*	Percentage in Range	
	2001	2011		2001	2011
• More than 8	7%	4%	• More than 50	14%	39%
• 7 - 8	10%	4%	• 46 - 50	25%	31%
• 5 - 6	18%	13%	• 41 - 45	36%	24%
• 1 - 4	47%	49%	• 36 - 40	23%	6%
• 0	18%	30%	• 30 - 35	2%	<1%
<b>Total</b>	<b>100%</b>	<b>100%</b>	<b>Total</b>	<b>100%</b>	<b>100%</b>

\* The G requirement went into effect in 2003.

Figure 14.

## Academic Preparation: 2001-2011 Comparison Fall Quarter

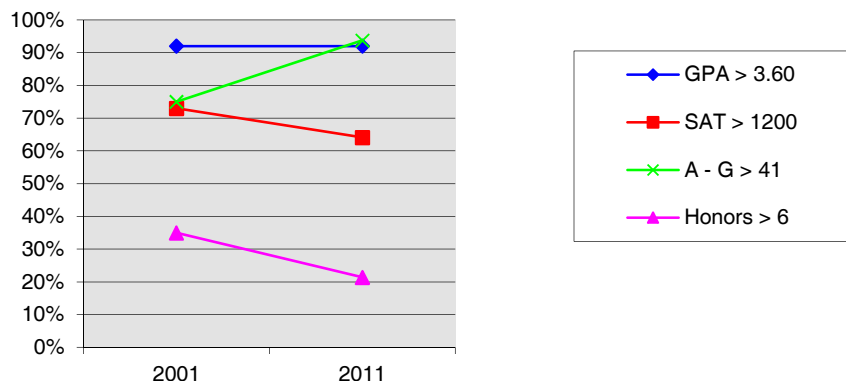


Table 25.

**High School GPA<sup>1</sup> by Gender, Ethnicity, Major Field of Study, Home Location, 1st Generation College Status & Income** Fall Quarter

First-Time Freshmen GPA	2001 Average	2006 Average	2007 Average	2008 Average	2009 Average	2010 Average	2011 Average
• Gender							
Female	3.97	3.94	3.95	3.95	3.97	3.98	3.98
Male	3.93	3.91	3.91	3.93	3.95	3.97	3.95
• Ethnicity							
African-American	3.94	3.73	3.85	3.88	3.88	3.90	3.86
Asian	3.91	3.89	3.91	3.90	3.95	3.95	3.94
Mexican-American	3.95	3.86	3.86	3.88	3.88	3.96	3.92
Filipino	3.97	4.02	4.02	4.01	4.04	4.04	4.07
Latino	3.94	3.85	3.88	3.90	3.94	3.99	3.96
Native-American	3.93	3.88	4.05	3.88	4.03	3.97	4.12
Caucasian	4.00	3.99	4.02	4.03	4.03	4.04	4.03
• Major Field of Study							
Arts	3.93	3.91	3.95	3.87	3.92	3.92	3.92
Humanities	3.89	3.87	3.95	3.97	3.91	3.95	3.91
Engineering	3.99	3.99	4.00	3.98	4.00	4.02	4.01
Science/Math	3.97	3.98	3.94	3.96	4.00	3.98	3.99
Biology	3.99	3.96	3.98	3.96	4.02	4.04	4.03
Social Science	3.91	3.86	3.87	3.89	3.91	3.92	3.89
Undec./Special	3.93	3.90	3.91	3.93	3.93	3.95	3.92
• Home Location							
San Diego	3.99	4.00	4.02	4.01	4.04	4.05	4.07
Los Angeles	3.92	3.89	3.90	3.91	3.93	3.96	3.96
San Francisco	3.92	3.90	3.92	3.92	3.95	3.98	3.97
Other CA	4.02	4.01	4.00	4.02	4.01	4.03	4.06
Out of State	4.10	4.05	4.04	4.02	4.05	3.94	3.87
International	3.89	3.92	3.93	3.92	3.94	3.87	3.76
• First Generation College Status							
First Generation	3.93	3.86	3.86	3.86	3.90	3.94	3.94
Not First Generation	3.96	3.95	3.98	3.98	4.00	4.00	3.98
• Income Group							
High (≥\$98,401)	3.97	3.98	4.00	3.99	4.03	4.02	4.01
Med. High (\$65,601-\$98,400)	4.00	3.96	4.02	3.98	4.04	4.01	4.04
Med. Low (\$32,801-\$65,600)	3.92	3.89	3.92	3.92	3.95	3.97	3.97
Low (≤\$32,800)	3.90	3.84	3.82	3.83	3.86	3.91	3.90
Missing	3.96	3.98	4.00	4.01	4.01	4.01	3.94
• Athletes <sup>2</sup>							
Athletes	NA	3.89	3.93	3.94	3.90	3.93	NA
Non-Athletes	NA	3.93	3.94	3.94	3.97	3.98	NA
<b>Total</b>	<b>3.95</b>	<b>3.93</b>	<b>3.94</b>	<b>3.94</b>	<b>3.96</b>	<b>3.98</b>	<b>3.96</b>

Average high school GPAs vary somewhat by gender, ethnicity, and major field of study. For example, the average GPA of females is slightly higher than that of males.

<sup>1</sup> GPAs may exceed 4.0 with credit given for honors courses.

<sup>2</sup> 2011 Athlete data not available until Winter Quarter 2012.

Table 26.

**SAT<sup>1</sup> Reasoning Test Scores by Gender, Ethnicity, Major Field of Study, Home Location, 1st Generation College Status & Income**  
 Fall Quarter

First-Time Freshmen SAT Reasoning Test (Critical Reading & Math)	2001 Average	2006 Average	2007 Average	2008 Average	2009 Average	2010 Average	2011 Average
• Gender							
Female	1239	1217	1224	1225	1229	1237	1203
Male	1293	1277	1278	1287	1291	1296	1268
• Ethnicity							
African-American	1155	1130	1149	1150	1127	1157	1083
Asian	1273	1258	1266	1277	1283	1290	1272
Mexican-American	1142	1089	1101	1082	1104	1108	1078
Filipino	1209	1196	1195	1204	1222	1227	1193
Latino	1201	1140	1165	1130	1139	1152	1139
Native-American	1273	1232	1191	1226	1226	1266	1141
Caucasian	1282	1276	1286	1282	1293	1302	1295
• Major Field of Study							
Arts	1246	1240	1226	1255	1204	1232	1187
Humanities	1276	1251	1266	1248	1253	1275	1201
Engineering	1297	1270	1281	1280	1279	1292	1275
Science/Math	1260	1245	1236	1250	1265	1260	1230
Biology	1258	1245	1246	1256	1276	1281	1227
Social Science	1240	1222	1226	1235	1235	1244	1202
Undec./Special	1253	1239	1249	1240	1242	1253	1226
• Home Location							
San Diego	1208	1189	1197	1208	1218	1224	1201
Los Angeles	1266	1232	1234	1239	1241	1252	1208
San Francisco	1301	1286	1300	1303	1311	1314	1286
Other CA	1250	1229	1219	1227	1226	1225	1204
Out of State	1337	1296	1314	1294	1281	1303	1297
International	1242	1262	1283	1254	1288	1275	1273
• First Generation College Status							
First Generation	1184	1150	1164	1163	1166	1188	1150
Not First Generation	1285	1279	1290	1294	1304	1306	1280
• Income Group							
High (≥\$98,401)	1303	1293	1316	1313	1332	1326	1312
Med. High (\$65,601-\$98,400)	1267	1257	1257	1267	1282	1293	1274
Med. Low (\$32,801-\$65,600)	1236	1218	1222	1219	1228	1244	1205
Low (≤\$32,800)	1195	1148	1162	1159	1164	1184	1149
Missing	1291	1305	1317	1328	1327	1331	1265
• Athletes <sup>2</sup>							
Athletes	NA	1236	1246	1255	1244	1260	NA
Non-Athletes	NA	1243	1248	1252	1258	1265	NA
<b>Total</b>	<b>1264</b>	<b>1243</b>	<b>1248</b>	<b>1252</b>	<b>1257</b>	<b>1265</b>	<b>1233</b>

The average SAT composite scores tend to vary by gender, ethnicity, and major. Males typically earn higher SAT scores compared to females.

<sup>1</sup> SAT scores were "recentered" starting with the 1996 freshman cohort.

<sup>2</sup> 2011 Athlete data not available until Winter Quarter 2012.



Table 27.

**SAT<sup>1</sup> Reasoning Test Scores by Gender, Ethnicity, Major Field of Study, Home Location, 1st Generation College Status & Income** Fall Quarter

First-Time Freshmen SAT Reasoning Test (Critical Reading, Math & Writing)	2006 Average	2007 Average	2008 Average	2009 Average	2010 Average	2011 Average
• Gender						
Female	1824	1829	1837	1845	1857	1806
Male	1886	1887	1900	1905	1920	1878
• Ethnicity						
African-American	1686	1716	1725	1697	1737	1621
Asian	1864	1871	1892	1903	1920	1892
Mexican-American	1632	1645	1619	1649	1653	1615
Filipino	1793	1780	1787	1814	1819	1771
Latino	1704	1752	1700	1711	1729	1707
Native-American	1844	1760	1824	1850	1892	1736
Caucasian	1906	1922	1919	1932	1946	1935
• Major Field of Study						
Arts	1858	1838	1873	1811	1859	1788
Humanities	1894	1899	1887	1888	1930	1809
Engineering	1870	1890	1889	1886	1907	1888
Science/Math	1840	1823	1843	1877	1873	1828
Biology	1855	1851	1875	1905	1920	1836
Social Science	1834	1835	1848	1853	1864	1804
Undec./Special	1848	1861	1855	1853	1873	1830
• Home Location						
San Diego	1766	1781	1794	1812	1824	1793
Los Angeles	1840	1836	1848	1851	1867	1804
San Francisco	1915	1932	1940	1954	1966	1923
Other CA	1826	1817	1831	1820	1824	1791
Out of State	1923	1947	1932	1908	1936	1926
International	1852	1882	1850	1911	1893	1891
• First Generation College Status						
First Generation	1706	1726	1727	1733	1768	1711
Not First Generation	1906	1919	1929	1943	1950	1912
• Income Group						
High (≥\$98,401)	1931	1958	1958	1988	1984	1962
Med. High (\$65,601-\$98,400)	1877	1874	1886	1913	1927	1901
Med. Low (\$32,801-\$65,600)	1813	1815	1816	1827	1856	1795
Low (≤\$32,800)	1699	1720	1720	1726	1761	1711
Missing	1945	1967	1984	1984	1988	1890
• Athletes <sup>2</sup>						
Athletes	1841	1860	1874	1854	1875	NA
Non-Athletes	1851	1855	1864	1873	1887	NA
<b>Total</b>	<b>1851</b>	<b>1855</b>	<b>1865</b>	<b>1872</b>	<b>1886</b>	<b>1840</b>

Table 28.

**Freshman Cohort by Academic Indicator Range** Fall Quarter

SAT Reasoning (Critical Reading, Math & Writing)  
Composite

Score Range	2011
• 2200 - 2400	5%
• 1900 - 2199	40%
• 1700 - 1899	30%
• 1500 - 1699	16%
• Low - 1499	9%
<b>Total</b>	<b>100%</b>

} 75%

<sup>1</sup> SAT scores were "recentered" starting with the 1996 freshman cohort.

<sup>2</sup> 2011 Athlete data not available until Winter Quarter 2012.



**New  
Transfer  
Students**

# ■ New Transfer Students

Over seventeen hundred transfer students applied for admission to UCSD for fall 2011. Approximately, 45% of these students were admitted. Of those students admitted, 2,803 registered resulting in a yield of 37%, showing an increase of 124% compared to 2001.

Table 29.

## New Transfers: Applicants, Admits & Registered Fall Quarter

New Transfers	2001	2006	2007	2008	2009	2010	2011	10 Year Δ
• Applicants	7,041	8,945	8,872	9,871	11,572	14,372	17,090	+143%
• Admits	4,412	5,755	6,494	6,443	7,160	8,031	7,612	+73%
Admit/Applicant Rate	63%	64%	73%	65%	62%	56%	45%	
• Registered	1,250	1,482	1,742	1,876	1,942	2,568	2,803	+124%
Registered/Admit Rate	28%	26%	27%	29%	27%	32%	37%	

Figure 15.

## New Transfers: Applicants, Admits & Registered Fall Quarter

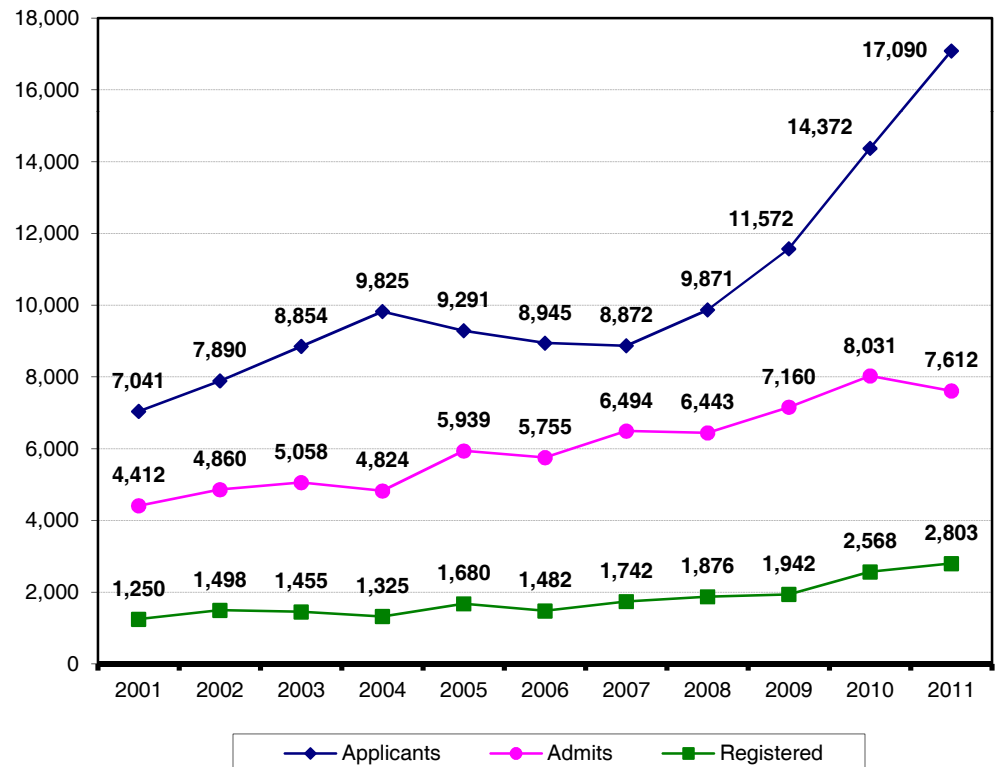


Table 30.

**New Transfers by Gender** Fall Quarter

Gender	2001	2006	2007	2008	2009	2010	2011	10 Year Δ
• Female	588 47%	668 45%	814 47%	847 45%	888 46%	1,176 46%	1,267 45%	+115%
• Male	662 53%	814 55%	928 53%	1,029 55%	1,054 54%	1,392 54%	1,536 55%	+132%
<b>Total</b>	<b>1,250</b>	<b>1,482</b>	<b>1,742</b>	<b>1,876</b>	<b>1,942</b>	<b>2,568</b>	<b>2,803</b>	<b>+124%</b>

Unlike the 2011 freshman cohort, male transfer students outnumber women by approximately 10%.

Figure 16.

**New Transfers by Gender** Fall Quarter

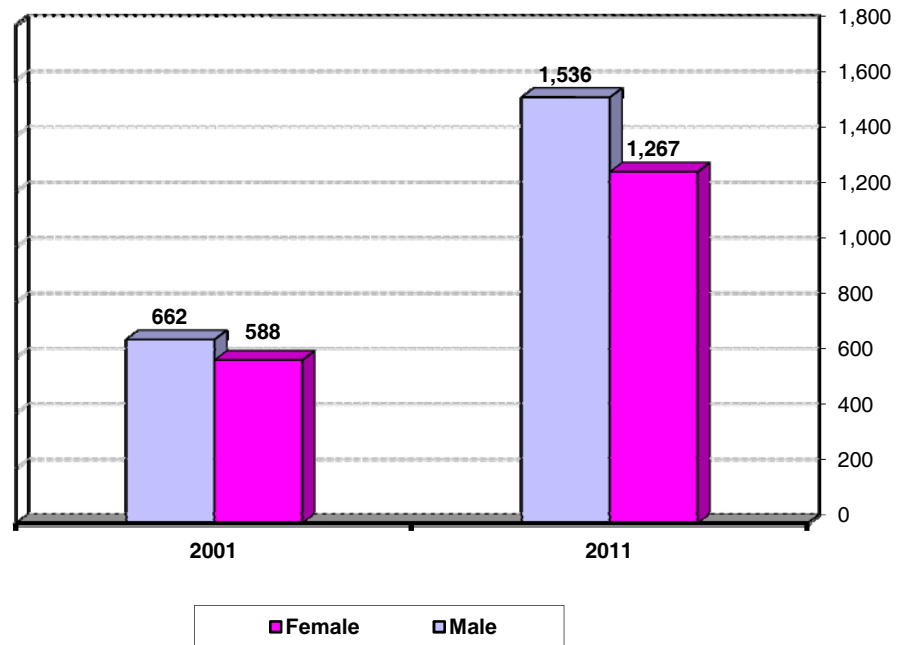


Table 31.

**New Transfers by Ethnicity**

Fall Quarter

The 2011 transfer student cohort is ethnically diverse; approximately 60% are students of color.

Ethnicity	2001	2006	2007	2008	2009	2010	2011	10 Year Δ
• African-American	23 2%	24 2%	37 2%	48 3%	45 2%	73 3%	61 2%	+165%
• Asian	330 26%	504 34%	585 34%	725 39%	768 40%	924 36%	1,020 36%	+209%
• Mexican-American	106 8%	121 8%	165 9%	176 9%	183 9%	262 10%	321 11%	+203%
• Filipino	56 4%	50 3%	83 5%	83 4%	60 3%	106 4%	133 5%	+138%
• Latino	38 3%	55 4%	53 3%	53 3%	62 3%	87 3%	134 5%	+253%
• Native-American	10 1%	11 1%	6 0%	8 0%	13 1%	26 1%	18 1%	+80%
• Caucasian	508 41%	525 35%	581 33%	577 31%	604 31%	845 33%	912 33%	+80%
• Other/Undeclared	179 14%	192 13%	232 13%	206 11%	207 11%	245 10%	204 7%	+14%
<b>Total</b>	<b>1,250</b>	<b>1,482</b>	<b>1,742</b>	<b>1,876</b>	<b>1,942</b>	<b>2,568</b>	<b>2,803</b>	<b>+124%</b>

Table 32.

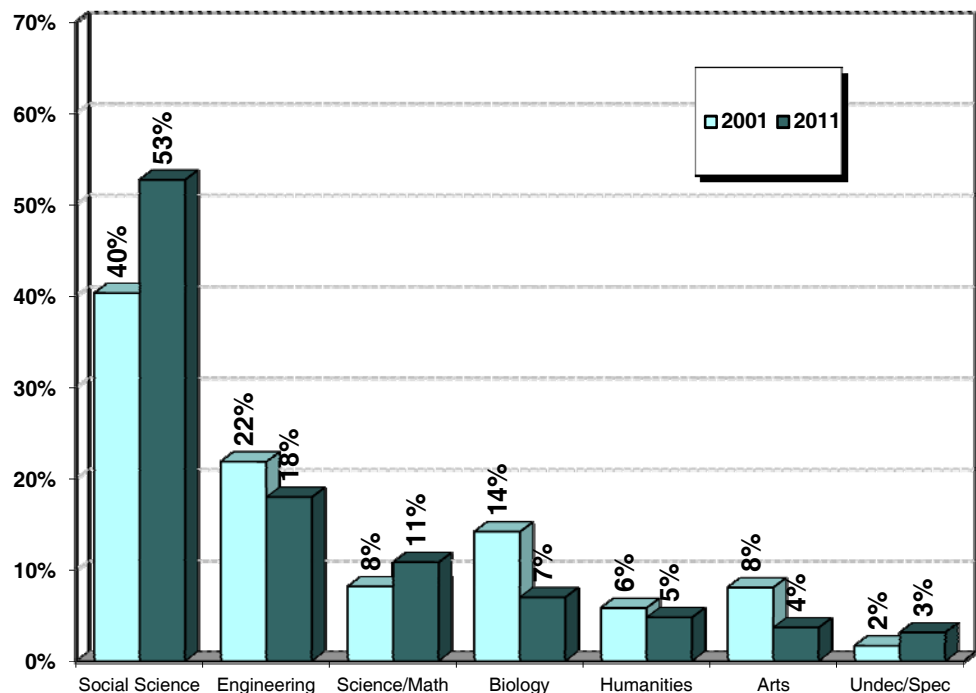
**New Transfers by Major Field of Study** Fall Quarter

Major Field of Study	2001	2006	2007	2008	2009	2010	2011	10 Year Δ
• Arts	101 8%	67 5%	83 5%	92 5%	71 4%	93 4%	103 4%	+2%
• Humanities	73 6%	82 6%	72 4%	83 4%	101 5%	110 4%	134 5%	+84%
• Engineering	273 22%	145 10%	180 10%	224 12%	271 14%	358 14%	503 18%	+84%
• Science/Math	102 8%	139 9%	155 9%	129 7%	123 6%	204 8%	303 11%	+197%
• Biology	177 14%	294 20%	338 19%	372 20%	269 14%	419 16%	196 7%	+11%
• Social Science	503 40%	702 47%	854 49%	940 50%	1,093 56%	1,369 53%	1,476 53%	+193%
• Undeclared/ Special	21 2%	53 4%	60 3%	36 2%	14 1%	15 1%	88 3%	+319%
<b>Total</b>	<b>1,250</b>	<b>1,482</b>	<b>1,742</b>	<b>1,876</b>	<b>1,942</b>	<b>2,568</b>	<b>2,803</b>	<b>+124%</b>

Over one-half (53%) of all new transfer students declared a major in the social sciences.

Figure 17.

**New Transfers by Major Field of Study** Fall Quarter



Ninety-four percent of new transfer students attended a California Community College prior to enrolling at UCSD. The largest number of new transfer students come from either the Los Angeles or San Diego areas.

Table 33.

**New Transfers by Transfer Institution** Fall Quarter

Transfer Institution	2001	2006	2007	2008	2009	2010	2011	10 Year Δ
• California Community Colleges	1,164 93%	1,368 92%	1,588 91%	1,747 93%	1,795 92%	2,443 95%	2,636 94%	+126%
Transfer Admission Guarantee (TAG)	156 12%	345 23%	327 19%	342 18%	700 36%	1,330 52%	2,120 76%	+1259%
Non-TAG	1,008 81%	1,023 69%	1,261 72%	1,405 75%	1,095 56%	1,113 43%	516 18%	-49%
• Intercampus Transfer/ Other 4 yr. College	75 6%	109 7%	147 8%	121 6%	144 7%	120 5%	165 6%	+120%
• Other/Unknown	11 1%	5 0%	7 0%	8 0%	3 0%	5 0%	2 0%	-82%
<b>Total</b>	<b>1,250</b>	<b>1,482</b>	<b>1,742</b>	<b>1,876</b>	<b>1,942</b>	<b>2,568</b>	<b>2,803</b>	<b>+124%</b>

Table 34.

**New Transfers by Home Location** Fall Quarter

Home Location	2001	2006	2007	2008	2009	2010	2011	10 Year Δ
• San Diego	374 30%	446 30%	480 28%	503 27%	473 24%	725 28%	879 31%	+135%
• Los Angeles	386 31%	493 33%	616 35%	705 38%	693 36%	939 37%	868 31%	+125%
• San Francisco	218 17%	251 17%	299 17%	322 17%	316 16%	364 14%	439 16%	+101%
• Other California	147 12%	137 9%	158 9%	131 7%	159 8%	215 8%	200 7%	+36%
• Out-of-State	6 0%	12 1%	24 1%	7 0%	20 1%	11 0%	30 1%	+400%
• International	119 10%	143 10%	165 9%	208 11%	281 14%	314 12%	387 14%	+225%
<b>Total</b>	<b>1,250</b>	<b>1,482</b>	<b>1,742</b>	<b>1,876</b>	<b>1,942</b>	<b>2,568</b>	<b>2,803</b>	<b>+124%</b>

Table 35.

**New Transfers by Undergraduate College** Fall Quarter

Undergraduate College	2001	2006	2007	2008	2009	2010	2011	10 Year Δ
• Revelle	217 17%	215 15%	230 13%	284 15%	304 16%	303 12%	330 12%	+52%
• John Muir	270 22%	296 20%	367 21%	260 14%	287 15%	479 19%	425 15%	+57%
• Thurgood Marshall	277 22%	290 20%	356 20%	392 21%	418 22%	613 24%	678 24%	+145%
• Earl Warren	282 23%	249 17%	265 15%	251 13%	218 11%	429 17%	452 16%	+60%
• Eleanor Roosevelt	204 16%	295 20%	316 18%	366 20%	393 20%	402 16%	460 16%	+125%
• Sixth	NA NA	137 9%	208 12%	323 17%	322 17%	342 13%	458 16%	NA
<b>Total</b>	<b>1,250</b>	<b>1,482</b>	<b>1,742</b>	<b>1,876</b>	<b>1,942</b>	<b>2,568</b>	<b>2,803</b>	<b>+124%</b>

In 2011, Thurgood Marshall enrolled the largest proportion (24%) of new transfer students.

Figure 18.

**New Transfers by Undergraduate College** Fall Quarter

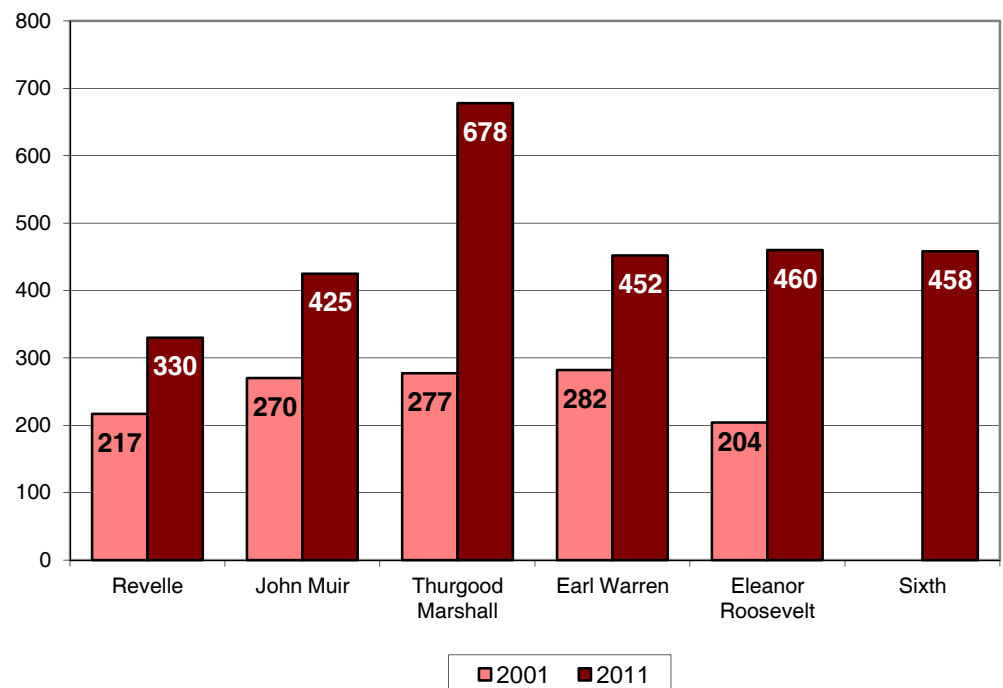




Table 36.

**New Transfers by 1st Generation College Status** Fall Quarter

College Status	2001	2006	2007	2008	2009	2010	2011	10 Year Δ
• First Generation	388 31%	458 31%	542 31%	625 33%	608 31%	784 31%	951 34%	+145%
• Not First Generation	862 69%	1,024 69%	1,200 69%	1,251 67%	1,334 69%	1,784 69%	1,852 66%	+115%
<b>Total</b>	<b>1,250</b>	<b>1,482</b>	<b>1,742</b>	<b>1,876</b>	<b>1,942</b>	<b>2,568</b>	<b>2,803</b>	<b>+124%</b>

The majority (66%) of new transfer students have at least one parent who has graduated from a two-year junior college or four-year college/university.

Table 37.

**New Transfers by Income Group** Fall Quarter

Income	2001	2006	2007	2008	2009	2010	2011	10 Year Δ
• High (≥\$98,401)	249 20%	280 19%	353 20%	367 20%	458 24%	542 21%	700 25%	+181%
• Medium High (\$65,601 - \$98,400)	154 12%	158 11%	193 11%	203 11%	185 10%	269 10%	279 10%	+81%
• Medium Low (\$32,801 - \$65,600)	245 20%	215 15%	291 17%	288 15%	296 15%	380 15%	416 15%	+70%
• Low (≤\$32,800)	233 19%	242 16%	284 16%	289 15%	314 16%	447 17%	422 15%	+81%
• Missing	369 30%	587 40%	621 36%	729 39%	689 35%	930 36%	986 35%	+167%
<b>Total</b>	<b>1,250</b>	<b>1,482</b>	<b>1,742</b>	<b>1,876</b>	<b>1,942</b>	<b>2,568</b>	<b>2,803</b>	<b>+124%</b>

Approximately, 2% of new transfer students participate on a UCSD athletic team.

Table 38.

**New Transfers Freshmen by Athletic Status** Fall Quarter

College Status	2001	2006	2007	2008	2009	2010	2011*	10 Year Δ
• Athlete	NA NA	31 2%	41 2%	44 2%	44 2%	47 2%	NA NA	NA
• Non-Athlete	NA NA	1,451 98%	1,701 98%	1,832 98%	1,898 98%	2,521 98%	NA NA	NA
<b>Total</b>	<b>1,250</b>	<b>1,482</b>	<b>1,742</b>	<b>1,876</b>	<b>1,942</b>	<b>2,568</b>	<b>2,803</b>	<b>+124%</b>

\* 2011 Athlete data not available until Winter Quarter 2012.

**Table 39.**

**Major\* Feeder Transfer Institutions** **Fall Quarter**

School	City	Enrollment N Fall 2011	% of Total Enrollment
San Diego Mesa College	San Diego	225	8.0%
De Anza College	Cupertino	186	6.6%
Palomar College	San Marcos	144	5.1%
Miracosta College	Oceanside	136	4.9%
Grossmont Community College	El Cajon	131	4.7%
Santa Monica College	Santa Monica	121	4.3%
Pasadena City College	Pasadena	113	4.0%
Foothill College	Los Altos Hills	89	3.2%
San Diego Miramar College	San Diego	79	2.8%
Orange Coast College	Costa Mesa	74	2.6%
Southwestern Community College	Chula Vista	74	2.6%
Diablo Valley College	Pleasant Hill	73	2.6%
Mount San Antonio College	Walnut	58	2.1%
San Diego City College	San Diego	58	2.1%
Irvine Valley College	Irvine	57	2.0%
El Camino College	Torrance	57	2.0%
Glendale Community College	Glendale	56	2.0%
Santa Barbara City College	Santa Barbara	56	2.0%
Saddleback College	Mission Viejo	55	2.0%
Moorpark College	Moorpark	44	1.6%
City College of San Francisco	San Francisco	40	1.4%
Los Angeles Pierce College	Woodland Hills	38	1.4%
Ohlone College	Fremont	37	1.3%
Cuyamaca College	El Cajon	36	1.3%
College of San Mateo	San Mateo	29	1.0%
UC Riverside	Riverside	28	1.0%
East Los Angeles College	Los Angeles	27	1.0%
Mount San Jacinto College	San Jacinto	25	0.9%
Cypress College	Cypress	24	0.9%
Cerritos College	Norwalk	23	0.8%
Fullerton College	Fullerton	23	0.8%
College of the Canyons	Santa Clarita	22	0.8%
Sierra College	Rocklin	18	0.6%
American River College	Sacramento	16	0.6%
College of the Desert	Palm Desert	16	0.6%
Chaffey Community College	Rancho Cucamonga	14	0.5%
Santa Rosa Junior College	Santa Rosa	14	0.5%
San Joaquin Delta College	Stockton	14	0.5%
Reedley College	Reedley	13	0.5%
Riverside Community College	Riverside	13	0.5%
Ventura College	Ventura	13	0.5%
Los Angeles Valley College	Van Nuys	13	0.5%
Citrus College	Glendora	12	0.4%
Cabrillo College	Aptos	11	0.4%
Imperial Valley College	Imperial	11	0.4%
Sacramento City College	Sacramento	11	0.4%
<b>Subtotal (Number of Transfer Institutions = 46)</b>		<b>2,427</b>	<b>86.6%</b>
<b>Other Institutions (Number of Transfer Institutions = 142 )</b>		<b>376</b>	<b>13.4%</b>
<b>Total (Number of Transfer Institutions = 188 )</b>		<b>2,803</b>	<b>100.0%</b>

\* Eleven or more matriculants from named transfer institution.

San Diego Mesa College tops the list of major feeder transfer institutions. Approximately 8% percent of the 2011 transfer cohort (n=225) transferred to UCSD from San Diego Mesa College.



**New  
Transfer  
Student  
Academic  
Preparation**

## ■ Academic Preparation: New Transfer Students

Table 40.

### New Transfer Cohort by Transfer GPA Averages Fall Quarter

Transfer	2001	2006	2007	2008	2009	2010	2011
• Transfer GPA	3.30	3.33	3.30	3.33	3.41	3.42	3.39

Table 41.

### New Transfer Cohort by Academic Indicator Ranges Fall Quarter

Transfer GPA Range	Percentage in Range	
	2001	2011
• 3.90 - High	6%	6%
• 3.60 - 3.89	18%	24%
• 3.30 - 3.59	25%	31%
• 3.00 - 3.29	32%	29%
• 2.70 - 2.99	16%	9%
• Low - 2.69	4%	2%
<b>Total</b>	<b>100%</b>	<b>100%</b>

} 49%      } 60%

The mean transfer GPA for the 2011 transfer cohort was 3.39. Thirty percent of the new transfer cohort had earned a GPA of 3.60 and higher prior to attending UCSD.



**Degrees  
Conferred**

# ■ Degrees Conferred

UCSD awarded more than eighty-one hundred undergraduate, graduate and professional degrees in 2010/2011, representing the largest number of UCSD graduates to date.

Table 42.

Degrees Conferred: All Degree Types								Fall Quarter
All Degree Types	'00/'01	'05/'06	'06/'07	'07/'08	'08/'09	'09/'10	'10/'11	10 Year Δ
• Bachelors	3,713 79%	5,200 77%	5,061 76%	5,337 75%	5,325 74%	5,685 75%	6,137 75%	+65%
• Masters	423 9%	761 11%	901 13%	894 13%	990 14%	1,033 14%	1,071 13%	+153%
• Candidate in Philosophy	147 3%	253 4%	185 3%	258 4%	234 3%	262 3%	276 3%	+88%
• Doctor of Philosophy	285 6%	376 6%	387 6%	488 7%	437 6%	459 6%	491 6%	+72%
• Doctor of Medicine	136 3%	186 3%	101 2%	125 2%	109 2%	122 2%	129 2%	-5%
• Doctor of Pharmacy	NA NA	NA NA	47 1%	31 0%	55 1%	54 1%	57 1%	NA
<b>Total</b>	<b>4,704</b>	<b>6,776</b>	<b>6,682</b>	<b>7,133</b>	<b>7,150</b>	<b>7,615</b>	<b>8,161</b>	<b>+73%</b>

Figure 19.

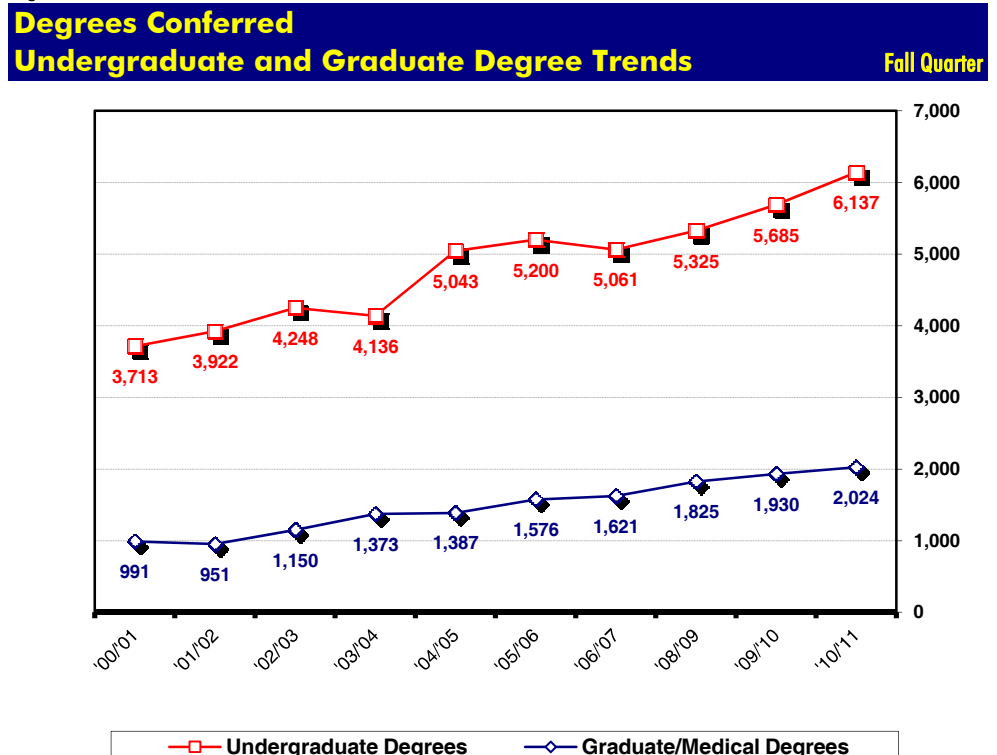


Table 43.

**Undergraduate Degrees by Gender** Fall Quarter

Gender	'00/'01	'05/'06	'06/'07	'07/'08	'08/'09	'09/'10	'10/'11	10 Year Δ
• Female	2,022 54%	2,747 53%	2,642 52%	2,847 53%	2,798 53%	3,025 53%	3,244 53%	+60%
• Male	1,691 46%	2,453 47%	2,419 48%	2,490 47%	2,527 47%	2,660 47%	2,893 47%	+71%
<b>Total UG Degrees</b>	<b>3,713</b>	<b>5,200</b>	<b>5,061</b>	<b>5,337</b>	<b>5,325</b>	<b>5,685</b>	<b>6,137</b>	<b>+65%</b>

Of the 6,137 undergraduate degrees awarded in 2010/2011, the majority (53%) were awarded to women.

Figure 20.

**Undergraduate Degrees by Gender** Fall Quarter

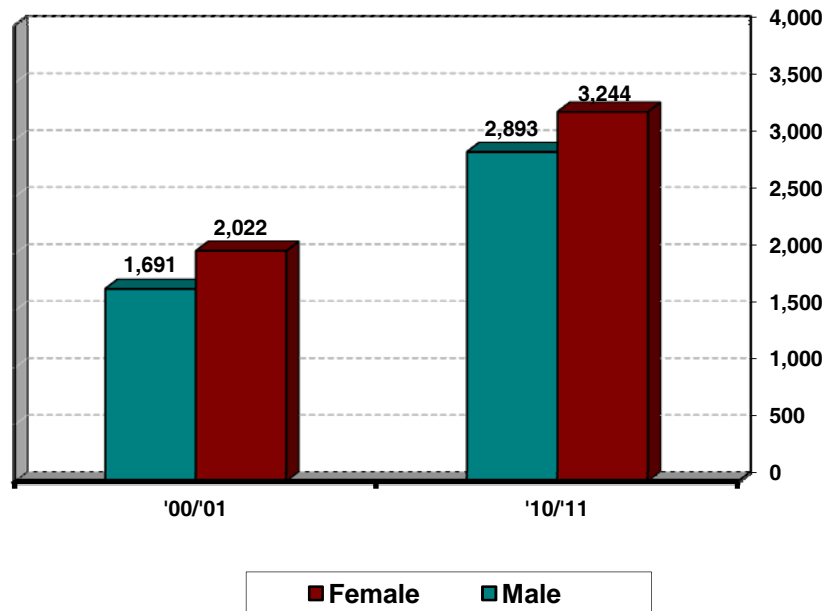


Table 44.

**Undergraduate Degrees by Ethnicity** Fall Quarter

Ethnicity	'00/'01	'05/'06	'06/'07	'07/'08	'08/'09	'09/'10	'10/'11	10 Year Δ
• African-American	59 2%	58 1%	70 1%	55 1%	84 2%	66 1%	84 1%	+42%
• Asian	1,029 28%	1,794 35%	1,692 33%	1,933 36%	2,065 39%	2,262 40%	2,418 39%	+135%
• Mexican-American	293 8%	347 7%	386 8%	386 7%	451 8%	459 8%	509 8%	+74%
• Filipino	193 5%	271 5%	234 5%	256 5%	243 5%	287 5%	244 4%	+26%
• Latino	95 3%	116 2%	129 3%	127 2%	139 3%	152 3%	175 3%	+84%
• Native-American	34 1%	22 0%	27 1%	21 0%	27 1%	28 0%	29 0%	-15%
• Caucasian	1,550 42%	1,879 36%	1,841 36%	1,770 33%	1,657 31%	1,675 29%	1,551 25%	+0%
• Other/Undeclared	460 12%	713 14%	682 13%	789 15%	659 12%	756 13%	1,127 18%	+145%
<b>Total UG Degrees</b>	<b>3,713</b>	<b>5,200</b>	<b>5,061</b>	<b>5,337</b>	<b>5,325</b>	<b>5,685</b>	<b>6,137</b>	<b>+65%</b>

Fifty-five percent (55%) of the UCSD bachelor's degrees awarded in 2010/2011 were earned by students of color.

Figure 21.

**Undergraduate Degrees by Ethnicity** Fall Quarter

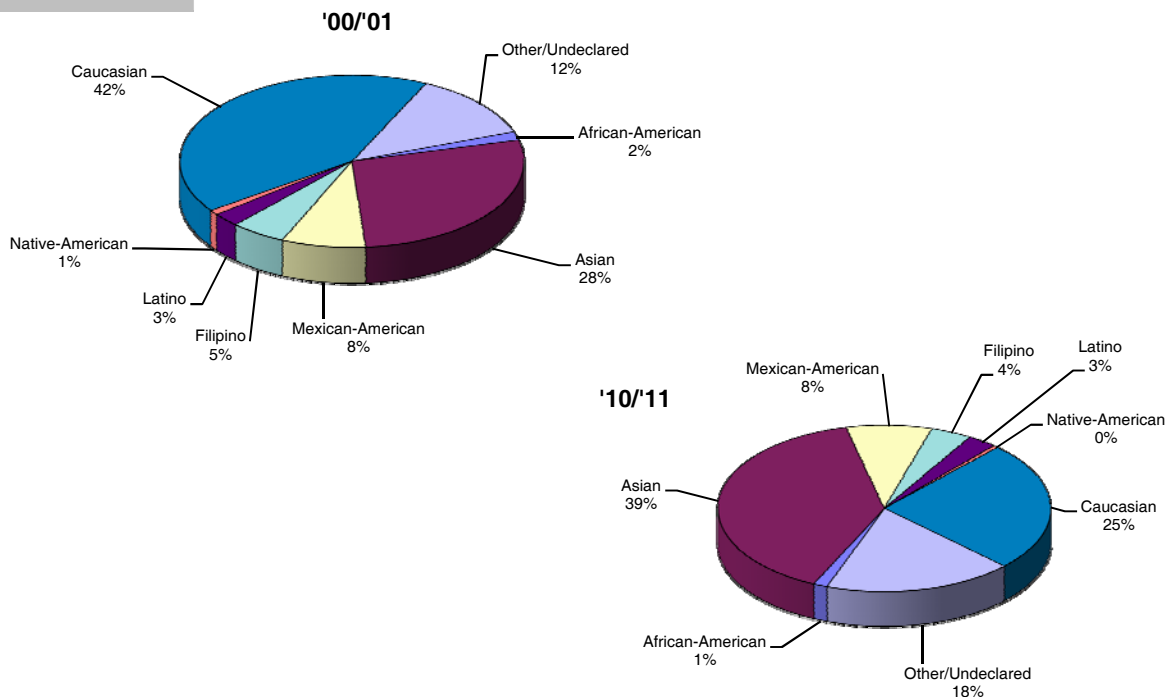




Table 45.

**Undergraduate Degrees by Major Field of Study** **Fall Quarter**

Major Field of Study	'00/'01	'05/'06	'06/'07	'07/'08	'08/'09	'09/'10	'10/'11	10 Year Δ
• Arts	214 6%	280 5%	257 5%	232 4%	249 5%	219 4%	256 4%	+20%
• Humanities	273 7%	280 5%	262 5%	291 5%	260 5%	255 4%	260 4%	-5%
• Engineering	540 15%	933 18%	814 16%	763 14%	747 14%	756 13%	818 13%	+51%
• Science/Math	203 5%	310 6%	339 7%	360 7%	395 7%	368 6%	413 7%	+103%
• Biology	826 22%	906 17%	939 19%	1,113 21%	1,173 22%	1,268 22%	1,483 24%	+80%
• Social Science	1,649 44%	2,486 48%	2,446 48%	2,577 48%	2,499 47%	2,816 50%	2,906 47%	+76%
• Double/Special	8 0%	5 0%	4 0%	1 0%	2 0%	3 0%	1 0%	-88%
<b>Total UG Degrees</b>	<b>3,713</b>	<b>5,200</b>	<b>5,061</b>	<b>5,337</b>	<b>5,325</b>	<b>5,685</b>	<b>6,137</b>	<b>+65%</b>

Almost one-half (47%) of all bachelor's degrees were awarded to social science majors.

Table 46.

**Undergraduate Degrees by College** **Fall Quarter**

College	'00/'01	'05/'06	'06/'07	'07/'08	'08/'09	'09/'10	'10/'11	10 Year Δ
• Revelle	650 18%	841 16%	799 16%	854 16%	839 16%	836 15%	881 14%	+36%
• John Muir	847 23%	1,066 21%	972 19%	1,031 19%	1,035 19%	1,142 20%	1,135 18%	+34%
• Thurgood Marshall	804 22%	1,002 19%	989 20%	1,001 19%	951 18%	1,014 18%	1,110 18%	+38%
• Earl Warren	968 26%	1,367 26%	1,254 25%	1,125 21%	1,132 21%	1,119 20%	1,152 19%	+19%
• Eleanor Roosevelt*	444 12%	773 15%	733 14%	818 15%	823 15%	829 15%	945 15%	+113%
• Sixth**	NA NA	151 3%	314 6%	508 10%	545 10%	745 13%	914 15%	NA
<b>Total UG Degrees</b>	<b>3,713</b>	<b>5,200</b>	<b>5,061</b>	<b>5,337</b>	<b>5,325</b>	<b>5,685</b>	<b>6,137</b>	<b>+65%</b>

\* Eleanor Roosevelt College enrolled its first class of undergraduates in 1988.

\*\* Sixth College enrolled its first class of undergraduates in 2002.

Table 47.

**Undergraduate Degrees by 1st Generation College Status** Fall Quarter

College Status	'00/'01	'05/'06	'06/'07	'07/'08	'08/'09	'09/'10	'10/'11	10 Year Δ
• First Generation	859 23%	1,180 23%	1,251 25%	1,429 27%	1,530 29%	1,395 25%	1,776 29%	+107%
• Not First Generation	2,854 77%	4,020 77%	3,810 75%	3,908 73%	3,795 71%	4,290 75%	4,361 71%	+53%
<b>Total UG Degrees</b>	<b>3,713</b>	<b>5,200</b>	<b>5,061</b>	<b>5,337</b>	<b>5,325</b>	<b>5,685</b>	<b>6,137</b>	<b>+65%</b>

Table 48.

**Undergraduate Degrees by Income Group** Fall Quarter

Income	'00/'01	'05/'06	'06/'07	'07/'08	'08/'09	'09/'10	'10/'11	10 Year Δ
• High (≥\$98,401)	758 20%	1,212 23%	1,170 23%	1,192 22%	1,144 21%	1,287 23%	1,356 22%	+79%
• Medium High (\$65,601 - \$98,400)	614 17%	694 13%	608 12%	647 12%	631 12%	609 11%	694 11%	+13%
• Medium Low (\$32,801 - \$65,600)	850 23%	1,020 20%	961 19%	1,006 19%	1,045 20%	980 17%	1,177 19%	+38%
• Low (≤\$32,800)	760 20%	981 19%	936 18%	1,006 19%	1,080 20%	1,020 18%	1,248 20%	+64%
• Missing	731 20%	1,293 25%	1,386 27%	1,486 28%	1,425 27%	1,789 31%	1,662 27%	+127%
<b>Total UG Degrees</b>	<b>3,713</b>	<b>5,200</b>	<b>5,061</b>	<b>5,337</b>	<b>5,325</b>	<b>5,685</b>	<b>6,137</b>	<b>+65%</b>

Table 49.

**Time-to-Degree\*/Academic Performance**  
**Entered UCSD from High School** Fall Quarter

Undergraduate Degrees	'00/'01	'05/'06	'06/'07	'07/'08	'08/'09	'09/'10	'10/'11
• Time-to-Degree							
Average Elapsed Time in Years	4.4 yrs.	4.3 yrs.	4.3 yrs.	4.3 yrs.	4.3 yrs.	4.2 yrs.	4.3 yrs.
Average Elapsed Time in Quarters	13.2 qtrs.	12.8 qtrs.	12.9 qtrs.	12.8 qtrs.	12.8 qtrs.	12.7 qtrs.	12.8 qtrs.
• GPA at Graduation							
GPA ≥ 3.5 (B+ or greater)	22.4%	25.9%	25.0%	24.8%	24.0%	26.6%	25.3%
3.00 ≤ GPA < 3.5 (B to B+)	44.3%	43.4%	42.6%	43.3%	42.4%	44.1%	43.2%
2.50 ≤ GPA < 3.00 (C+ to B)	26.4%	25.3%	25.5%	25.7%	26.5%	23.1%	25.5%
2.0 ≤ GPA < 2.50 (C to C+)	6.9%	5.4%	6.9%	6.3%	7.1%	6.3%	6.0%
GPA < 2.0	0.0%	0.0%	0.0%	0.0%	0.0%	0.0%	0.0%

The average time-to-degree for undergraduate students entering from high school is approximately 13 quarters or 4.3 years. The average GPA earned by the 2010/2011 graduating class is 3.19.

\* Time-to-degree is reported in elapsed quarters from first enrollment date to graduation. Only the records of students who enter UCSD in the Fall Quarter are included in time-to-degree calculations. An academic year is defined as three quarters; twelve quarters equal four years. Summer degrees are combined with Fall degrees, and combined, represent one quarter.

Figure 22.

**Grade Distribution: Degree Recipients** Fall Quarter

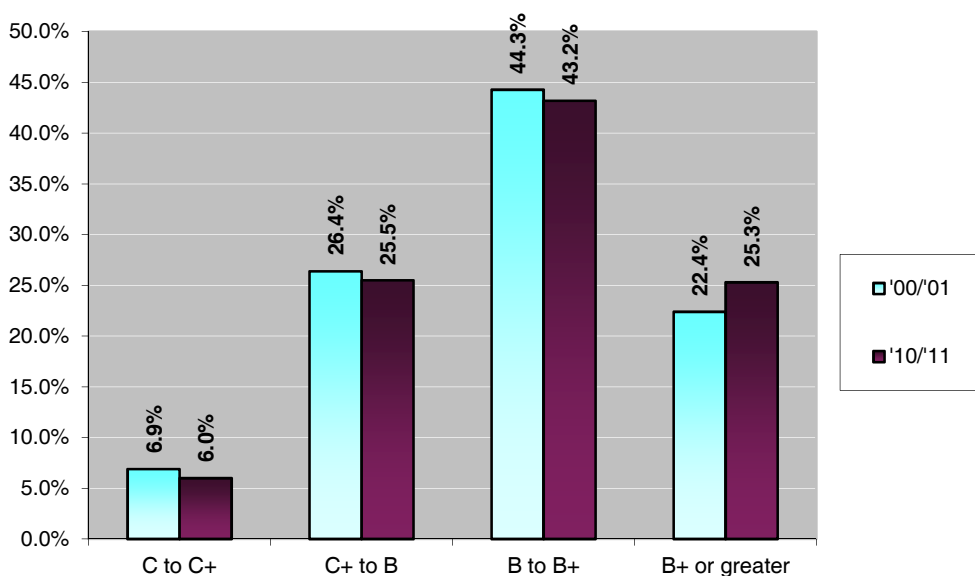


Table 50.

**Time-to-Degree\*/Academic Performance**  
**Entered UCSD from a Two-Year Community College** Fall Quarter

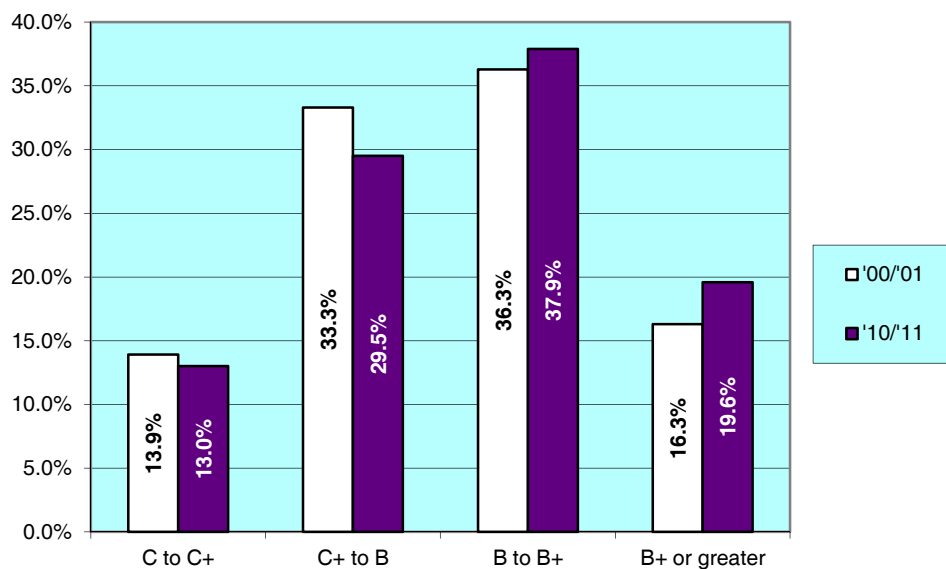
Undergraduate Degrees	'00/'01	'05/'06	'06/'07	'07/'08	'08/'09	'09/'10	'10/'11
• Time-to-Degree							
Average Elapsed Time in Years	2.9 yrs.	2.6 yrs.	2.6 yrs.	2.7 yrs.	2.6 yrs.	2.7 yrs.	2.6 yrs.
Average Elapsed Time in Quarters	8.7 qtrs.	7.9 qtrs.	7.8 qtrs.	8.0 qtrs.	7.9 qtrs.	8.0 qtrs.	7.8 qtrs.
• GPA at Graduation	3.02	3.06	3.06	3.04	3.03	3.04	3.07
GPA ≥ 3.5 (B+ or greater)	16.3%	19.3%	18.8%	18.1%	17.7%	19.0%	19.6%
3.00 ≤ GPA < 3.5 (B to B+)	36.3%	35.9%	37.1%	37.1%	35.9%	34.2%	37.9%
2.50 ≤ GPA < 3.00 (C+ to B)	33.3%	32.5%	32.0%	30.8%	31.8%	33.2%	29.5%
2.0 ≤ GPA < 2.50 (C to C+)	13.9%	12.3%	12.1%	13.9%	14.7%	13.6%	13.0%
GPA < 2.0	0.0%	0.0%	0.0%	0.0%	0.0%	0.0%	0.0%

\* Time-to-degree is reported in elapsed quarters from first enrollment date to graduation. Only the records of students who enter UCSD in the Fall Quarter are included in time-to-degree calculations. An academic year is defined as three quarters; twelve quarters equal four years. Summer degrees are combined with Fall degrees, and combined, represent one quarter.

Community College transfer students complete their degree requirements at UCSD in eight quarters or almost three years. The average GPA earned by the 2010/2011 graduating class for courses taken at UCSD was 3.07.

Figure 23.

**Grade Distribution: Degree Recipients** Fall Quarter





**Appendix:  
Undergraduate  
Major Fields  
of Study /  
Academic  
Departments**

## ■ Undergraduate Major Fields of Study/Academic Departments

### ARTS

*Music Department*  
*Theatre & Dance Department*  
*Visual Arts Department*

### HUMANITIES

*Classical Studies*  
*History Department*  
*Literature Department*  
*Philosophy Department*

### SCHOOL OF ENGINEERING

*Bioengineering Department*  
*Chemical Engineering*  
*Computer Science and Engineering Department*  
*Electrical and Computer Engineering Department*  
*Mechanical and Aerospace Engineering Department*  
*NanoEngineering*  
*Structural Engineering*

### BIOLOGY

*Biology Department*

### SPECIAL AND UNDECLARED

*Individual Studies*  
*Limited Status*  
*Special-Employee*  
*Undeclared*

### SOCIAL SCIENCE

*Anthropology Department*  
*Chinese Studies*  
*Cognitive Science Department*  
*Communication Department*  
*Critical Gender Studies*  
*Economics Department*  
*Ethnic Studies Department*  
*German Studies*  
*Human Development Program*  
*International Studies*  
*Italian Studies*  
*Japanese Studies*  
*Judaic Studies*  
*Latin American Studies*  
*Linguistics Department*  
*Political Science Department*  
*Program for the Study of Religion*  
*Psychology Department*  
  
*Sociology Department*  
*Third World Studies*  
*Urban Studies and Planning Program*

### SCIENCE AND MATH

*Chemistry and Biochemistry Department*  
*Environmental Systems*  
*Mathematics Department*  
*Physics Department*



The Student Digest is an annual publication of the  
Office of Student Research & Information,  
Student Affairs, 858-534-2382.

This document is also available on the  
World Wide Web at:

[studentresearch.ucsd.edu](http://studentresearch.ucsd.edu)