

DEGREES CONFERRED

Profile of Degree Recipients

2005 - 2006

University of California, San Diego

William B. Armstrong, Ph.D.
Director

Heidi M. Carty, Ph.D.
Principal Research Analyst

Greg Martin
Programmer Analyst

Jason R. Thornton
Research Analyst

Student Research & Information
Student Affairs
University of California, San Diego
La Jolla, CA 92093-0088
<http://studentresearch.ucsd.edu>

- Reaching a record high for the sixth consecutive year, UC San Diego awarded a combined total of 6,776 undergraduate, graduate and medical degrees during the 2005/2006 academic year.
- The majority (53%) of undergraduate and graduate pharmaceutical degrees (64%) were awarded to females. The majority of other graduate (M.A./M.S., 55%; Ph.D., 59%) and medical degrees (53%) were awarded to males.
- UCSD awarded 5,200 undergraduate degrees. Of these, the largest percentage (48%; 2,486) were granted to social science majors.
- The majority of arts, humanities, science/math and social science degrees were awarded to females, while the majority of engineering degrees were awarded to males.
- More than one-half (58%) of all first-time freshmen who earned a bachelor's degree at UCSD did so in four years; three-quarters (75%) graduated within 13 quarters or just over four years, respectively.
- On average, transfer students took three years to complete their bachelor degree requirements at UCSD, over three-quarters (76%) graduated within nine quarters.
- Sixty-five percent of the 2005/2006 undergraduate degree recipients graduated with a grade point average of 3.0 ('B') or better; approximately one in four (24%) graduated with a grade point average of 3.5 ('B+') or better.
- The average GPA for all undergraduate degree recipients in 2005/2006 was 3.16. The average GPA for the 2005/2006 first-time freshmen graduates was 3.20. The average GPA for the 2005/2006 transfer students was 3.06.

All Degree Types



**UC SAN DIEGO AWARDED A TOTAL OF 6,776
UNDERGRADUATE, GRADUATE AND MEDICAL DEGREES
DURING THE 2005/2006 ACADEMIC YEAR.**

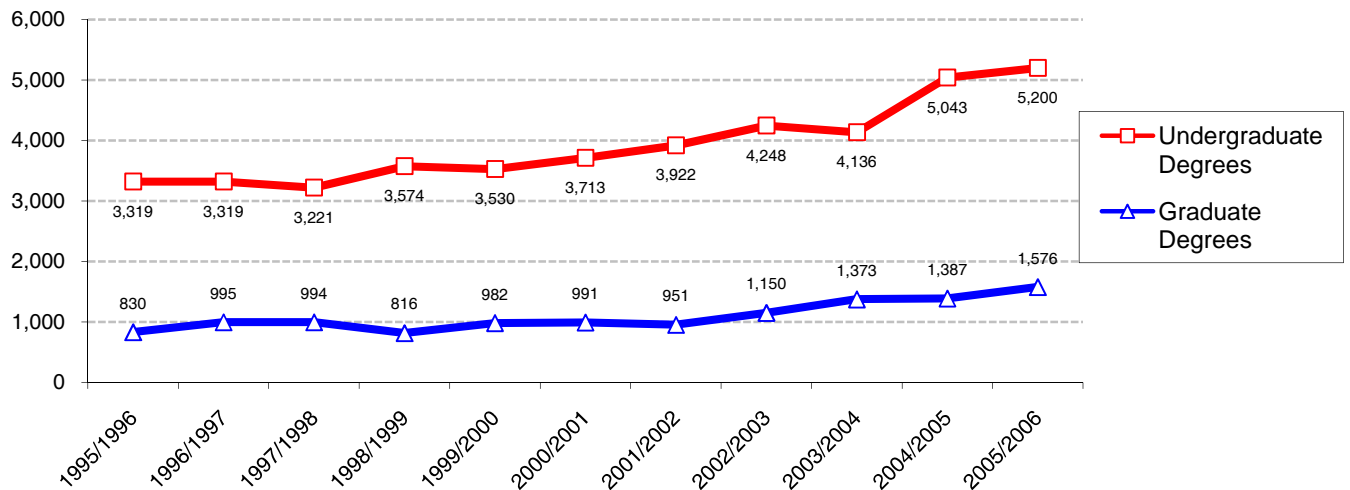
Degrees by the Numbers



6,776 students graduated from UCSD in 2005/2006. At 5,200, a record high number of undergraduates graduated from UCSD in 2005/2006.

Award Year	Bachelor	Master	Candidate in Phil.	Doctor of Philosophy	Doctor of Medicine	Doctor of Pharmacy	Total
2005/2006	5,200	761	253	354	186	22	6,776
2004/2005	5,043	797	170	303	117	--	6,430
2003/2004	4,136	785	161	327	100	--	5,509
2002/2003	4,248	573	170	279	128	--	5,398
2001/2002	3,922	495	117	278	61	--	4,873
2000/2001	3,713	423	147	285	136	--	4,704
1999/2000	3,530	408	150	294	130	--	4,512
1998/1999	3,574	358	120	303	35	--	4,390
1997/1998	3,221	404	178	310	102	--	4,215
1996/1997	3,319	364	148	281	202	--	4,314
1995/1996	3,319	384	149	259	38	--	4,149

Trends in Degrees Awarded





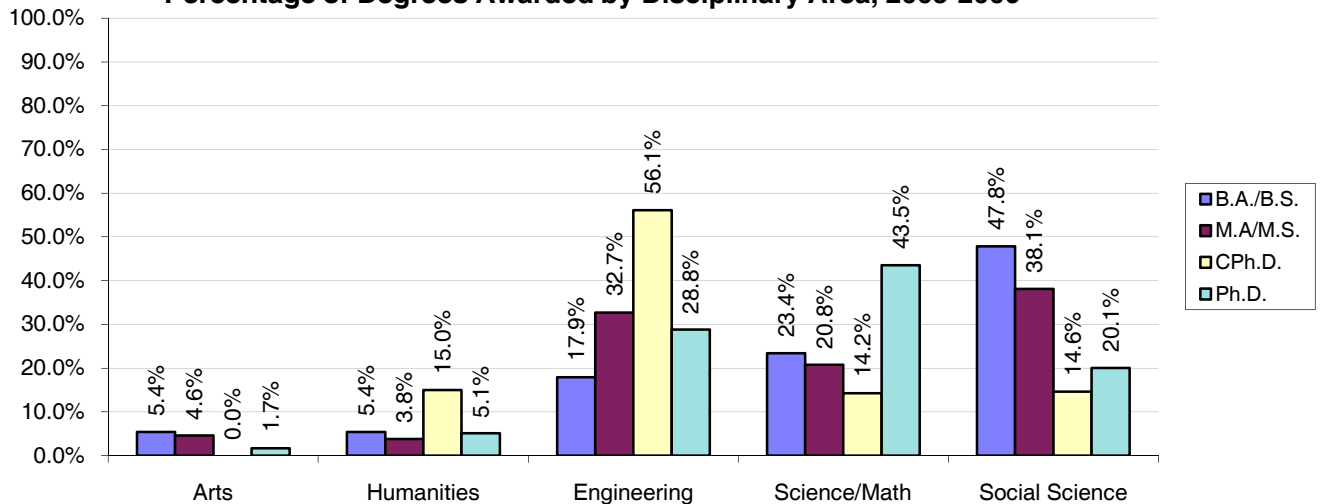
Student Characteristics: All Degree Types 2005/2006

The majority (53%) of bachelor's degrees were awarded to females.

Almost half (48%) of all bachelor's degrees were awarded to social science majors. Approximately one-third of all Master's degrees were awarded to engineering (33%) and social science (38%) majors, while the largest number of degree recipients earning PhD's were science/math majors.

Background Characteristics	B.A./B.S. N=5,200		M.A./M.S. N=761		CPh.D. N=253		Ph.D. N=354		M.D. N=186		Pharm N=22	
	N	%	N	%	N	%	N	%	N	%	N	%
Gender												
Female	2,747	52.8%	344	45.2%	67	26.5%	145	41.0%	87	46.8%	14	63.6%
Male	2,453	47.2%	417	54.8%	186	73.5%	209	59.0%	99	53.2%	8	36.4%
Ethnicity												
African Am.	58	1.1%	9	1.2%	3	1.2%	2	0.6%	4	2.2%	0	0.0%
Asian	1,794	34.5%	115	15.1%	18	7.1%	23	6.5%	66	35.5%	8	36.4%
Mexican Am.	347	6.7%	25	3.3%	5	2.0%	8	2.3%	2	1.1%	0	0.0%
Filipino	271	5.2%	9	1.2%	0	0.0%	4	1.1%	3	1.6%	0	0.0%
Latino	116	2.2%	22	2.9%	4	1.6%	8	2.3%	7	3.8%	0	0.0%
Native Am.	22	0.4%	4	0.5%	0	0.0%	2	0.6%	10	5.4%	0	0.0%
Caucasian	1,879	36.1%	369	48.5%	102	40.3%	185	52.3%	74	39.8%	8	36.4%
Other	713	13.7%	208	27.3%	121	47.8%	122	34.5%	20	10.8%	6	27.3%
Disciplinary Area												
Arts	280	5.4%	35	4.6%	0	0.0%	6	1.7%	0	0.0%	0	0.0%
Humanities	280	5.4%	29	3.8%	38	15.0%	18	5.1%	0	0.0%	0	0.0%
Engineering	933	17.9%	249	32.7%	142	56.1%	102	28.8%	0	0.0%	0	0.0%
Science/Math	1,216	23.4%	158	20.8%	36	14.2%	154	43.5%	186	100.0%	22	100.0%
Social Science	2,486	47.8%	290	38.1%	37	14.6%	71	20.1%	0	0.0%	0	0.0%
Dbl/Special	5	0.1%	0	0.0%	0	0.0%	3	0.8%	0	0.0%	0	0.0%
College												
Revelle	841	16.2%	NA	NA	NA	NA	NA	NA	NA	NA	NA	NA
John Muir	1,066	20.5%	NA	NA	NA	NA	NA	NA	NA	NA	NA	NA
Thurgood Marshall	1,002	19.3%	NA	NA	NA	NA	NA	NA	NA	NA	NA	NA
Earl Warren	1,367	26.3%	NA	NA	NA	NA	NA	NA	NA	NA	NA	NA
Eleanor Roosevelt	773	14.9%	NA	NA	NA	NA	NA	NA	NA	NA	NA	NA
Sixth	151	2.9%	NA	NA	NA	NA	NA	NA	NA	NA	NA	NA

Percentage of Degrees Awarded by Disciplinary Area, 2005-2006

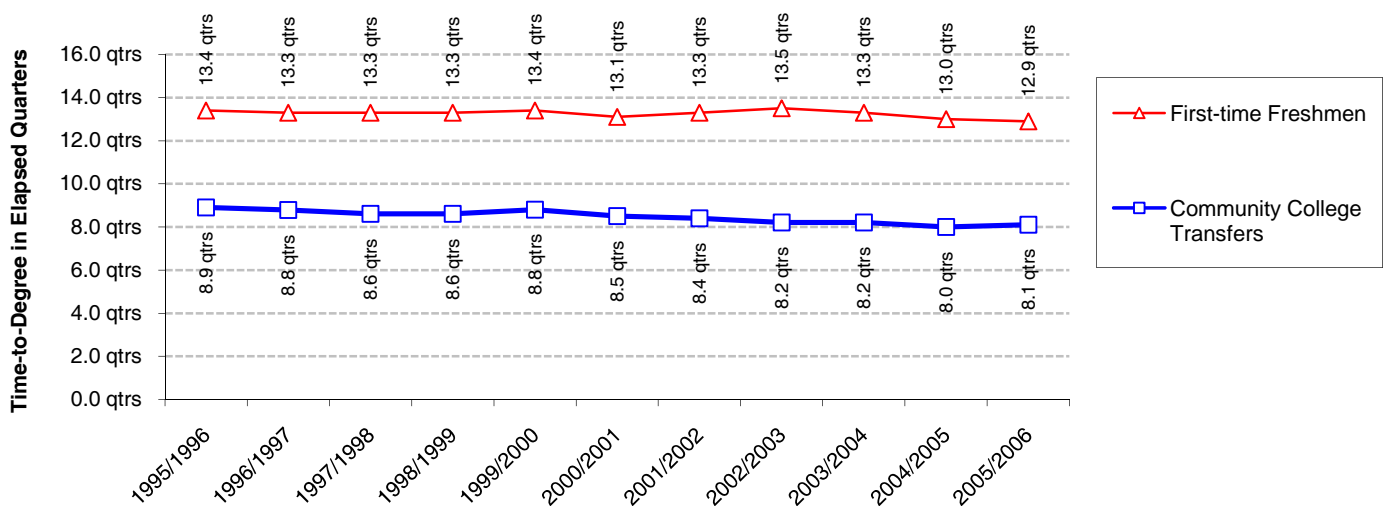


Trends in Time-to-Degree¹: Academic Performance

Academic Performance	Award Year										
	'95/'96	'96/'97	'97/'98	'98/'99	'99/'00	'00/'01	'01/'02	'02/'03	'03/'04	'04/'05	'05/'06
<i>Bachelor Degree Recipients Who Entered From High School</i>											
Average Time-to-Degree	13.4	13.3	13.3	13.3	13.4	13.1	13.3	13.5	13.3	13.0	12.9
Median Time-to-Degree	12.0	13.0	12.0	12.0	13.0	12.0	12.0	12.0	12.0	12.0	12.0
Average Units	205	204	204	204	205	205	205	207	209	210	211
GPA at Graduation	3.17	3.15	3.14	3.14	3.14	3.16	3.14	3.16	3.19	3.19	3.20
% with GPA = 3.0 - 3.5	46%	43%	44%	42%	42%	45%	45%	43%	43%	44%	43%
% with GPA \geq 3.5	22%	22%	21%	22%	22%	22%	20%	23%	25%	26%	26%
<i>Bachelor Degree Recipients Who Entered From a Two-Year Community College</i>											
Average Time-to-Degree	8.9	8.8	8.6	8.6	8.8	8.5	8.4	8.2	8.2	8.0	8.1
Median Time-to-Degree	9.0	9.0	9.0	8.0	8.0	8.0	7.0	6.0	6.0	6.0	6.0
Average Units	208	210	209	207	207	207	205	206	205	206	206
GPA at Graduation	3.03	3.01	3.03	3.04	3.01	3.05	3.03	3.04	3.06	3.04	3.06
% with GPA = 3.0 - 3.5	36%	35%	37%	36%	34%	37%	40%	36%	37%	39%	36%
% with GPA \geq 3.5	18%	17%	17%	18%	17%	16%	15%	17%	20%	17%	19%
<i>Total Bachelor Degree Recipients</i>											
Average Units	206	206	206	205	206	206	205	207	208	209	210
GPA at Graduation	3.11	3.10	3.10	3.11	3.10	3.12	3.11	3.12	3.15	3.14	3.16
% with GPA = 3.0 - 3.5	42%	40%	41%	41%	40%	42%	43%	41%	41%	42%	41%
% with GPA \geq 3.5	20%	20%	20%	20%	20%	20%	19%	21%	23%	23%	24%

¹Time-to-Degree is reported in elapsed quarters from first enrollment date to graduation. Only the records of students who enter UCSD in the Fall quarter are included in time-to-degree calculations. An academic year is defined as three quarters; twelve quarters equal four years. Summer degrees are combined with Fall degrees and represent one quarter.

Time-to-Degree Trends



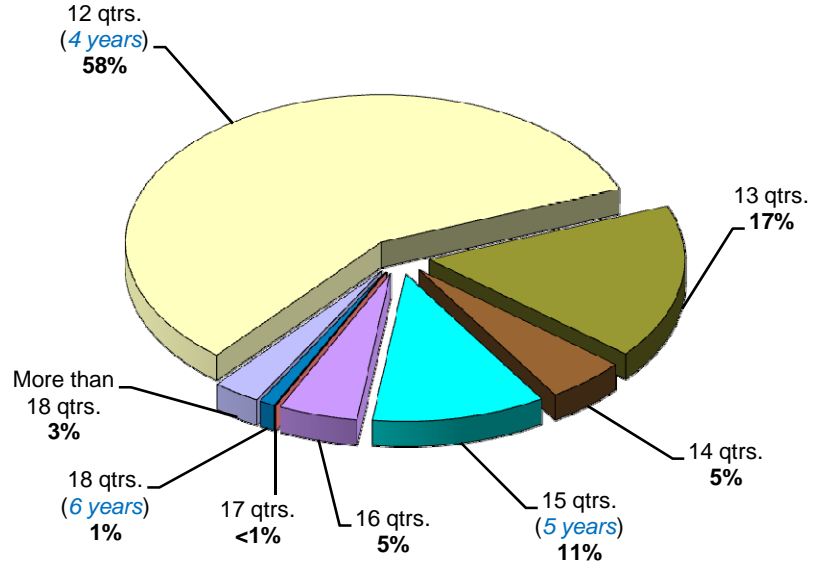
Nominal Time-to-Degree: 2005/2006

Fifty-eight percent of first-time freshmen earning a bachelor's degree at UCSD did so in four years; three quarters (75%) graduated within 13 quarters or just over four years.

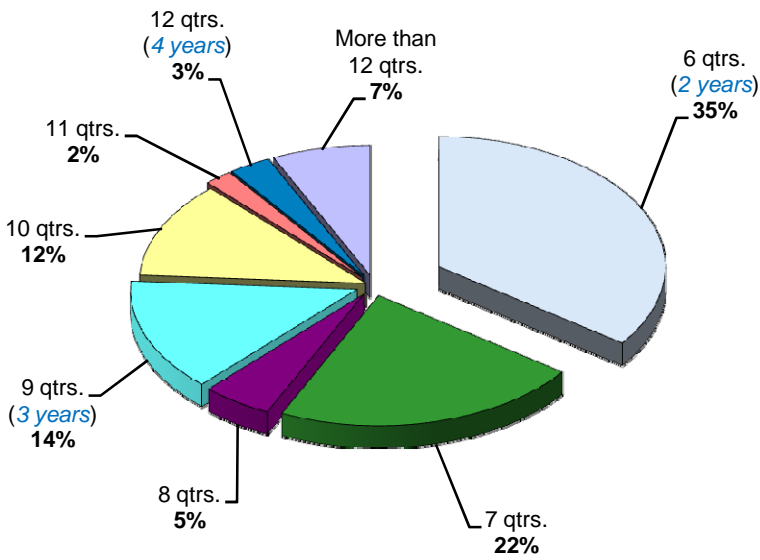
First-Time Freshmen

Cumulative Frequency:

58% graduated within 12 qtrs.
 75% graduated within 13 qtrs.
 80% graduated within 14 qtrs.
 91% graduated within 15 qtrs.
 96% graduated within 16 qtrs.
 96% graduated within 17 qtrs.
 97% graduated within 18 qtrs.



On average, transfer students took three years to complete their bachelor degree requirements at UCSD. Over three-quarters (76%) graduated within three years (9 quarters), just over one-third graduated within two years (6 quarters).



Community College Transfer

Cumulative Frequency:

35% graduated within 6 qtrs.
 57% graduated within 7 qtrs.
 62% graduated within 8 qtrs.
 76% graduated within 9 qtrs.
 88% graduated within 10 qtrs.
 90% graduated within 11 qtrs.
 93% graduated within 12 qtrs.

Characteristics of Bachelor Degree Recipients: 2005/2006



Student Characteristics	N	%	Academic Profile				Time-to-Degree	
			GPA Mean	% GPA 3.0 - 3.5	% GPA ≥ 3.5	Units Mean	Freshmen Mean	C.C. Transfer ² Mean
Gender								
Female	2,747	52.8%	3.20	42.3%	26.1%	207	12.7	7.7
Male	2,453	47.2%	3.12	40.0%	21.3%	213	13.2	8.4
Ethnicity								
African Am.	58	1.1%	2.94	29.3%	12.1%	210	12.9	9.2
Asian	1,794	34.5%	3.10	41.5%	18.3%	214	13.0	8.1
Mexican Am.	347	6.7%	3.03	36.6%	15.0%	203	13.4	8.3
Filipino	271	5.2%	2.98	35.1%	13.3%	207	13.4	7.9
Latino	116	2.2%	3.12	32.8%	22.4%	207	13.2	8.0
Native Am.	22	0.4%	3.26	40.9%	31.8%	214	13.6	6.6
Caucasian	1,879	36.1%	3.27	44.1%	31.3%	207	12.7	8.0
Other	713	13.7%	3.19	39.8%	27.3%	209	12.9	8.0
Disciplinary Area								
Arts	280	5.4%	3.36	48.9%	37.9%	208	13.4	8.2
Humanities	280	5.4%	3.25	46.4%	28.9%	204	12.8	8.2
Engineering	933	17.9%	3.11	37.8%	19.7%	232	13.7	9.6
Science/Math	1,216	23.4%	3.17	38.4%	25.9%	215	12.9	8.2
Social Science	2,486	47.8%	3.15	42.3%	22.2%	200	12.6	7.3
DbI/Special	5	0.1%	3.15	60.0%	0.0%	199	12.7	6.5
College								
Revelle	841	16.2%	3.10	38.4%	20.2%	219	13.2	8.9
Muir	1,066	20.5%	3.23	40.2%	31.0%	206	12.7	7.9
Marshall	1,002	19.3%	3.11	42.7%	17.8%	203	13.0	7.8
Warren	1,367	26.3%	3.16	39.8%	24.1%	212	13.1	8.0
Roosevelt	773	14.9%	3.18	45.4%	23.0%	210	12.9	8.7
Sixth	151	2.9%	3.33	44.4%	35.8%	206	11.8	5.9
School Type								
High School	3,645	70.1%	3.20	43.1%	25.9%	211	12.9	--
2yr College	1,476	28.4%	3.06	35.9%	19.1%	206	--	8.1
4yr College/Univ.	73	1.4%	3.18	53.4%	17.8%	210	--	--
Unknown	6	0.1%	2.78	16.7%	16.7%	236	--	--
Total Population	5,200	100.0%	3.16	41.2%	23.8%	210	12.9	8.1

Time-to-degree for bachelor degree recipients tends to vary by disciplinary area. In general, engineering majors require more time to complete their degree requirements compared to non-engineering majors.

Approximately 65% of the undergraduate degree recipients graduated with a grade point average of 3.0 ('B') or better. Approximately twenty-four percent graduated with a grade point average of 'B+' or better.

²For Transfer students, time-to-degree is calculated only for those students who matriculate from a two-year community college (C.C.). The typical community college transfer student enters UCSD with 90 units of transferable academic credit.

On average, first-time freshmen take approximately four years (13 quarters) to graduate. Community College transfer students tend to graduate in just under three years or 8 quarters.

Profile of Bachelor Degree Recipients Majoring in the Arts: 2005/2006



Muir College awarded the largest number of bachelor's degrees in arts compared to the other five colleges.

Relative to other disciplinary areas, a larger percentage (87%) of arts majors graduated with a GPA of 'B' or better. The average GPA for arts majors was 3.36 respectively.

Student Characteristics	N	%	Academic Profile			Units Mean	Time-to-Degree	
			GPA Mean	% GPA 3.0 - 3.5	% GPA ≥ 3.5		Freshmen Mean	C.C. Transfer Mean
Gender								
Female	164	58.6%	3.41	45.7%	44.5%	208	13.2	7.7
Male	116	41.4%	3.28	53.4%	28.4%	208	13.6	8.9
Ethnicity								
African Am.	2	0.7%	3.18	0.0%	50.0%	251	16.5	--
Asian	94	33.6%	3.30	59.6%	28.7%	207	13.0	8.0
Mexican Am.	16	5.7%	3.43	37.5%	43.8%	209	15.3	9.1
Filipino	19	6.8%	3.19	52.6%	15.8%	201	14.0	7.4
Latino	8	2.9%	3.07	25.0%	25.0%	203	13.8	8.5
Native Am.	2	0.7%	3.07	100.0%	0.0%	217	13.3	5.5
Caucasian	100	35.7%	3.45	40.0%	53.0%	209	13.6	7.7
Other	39	13.9%	3.38	53.8%	33.3%	209	13.4	9.5
College								
Revelle	21	7.5%	3.20	71.4%	14.3%	219	13.3	12.0
Muir	84	30.0%	3.37	44.0%	40.5%	206	13.5	9.2
Marshall	40	14.3%	3.28	70.0%	20.0%	201	12.9	7.1
Warren	66	23.6%	3.37	39.4%	45.5%	210	14.4	7.9
Roosevelt	46	16.4%	3.37	43.5%	41.3%	213	13.8	8.9
Sixth	23	8.2%	3.52	47.8%	52.2%	204	11.9	5.6
School Type								
High School	168	60.0%	3.32	53.0%	32.1%	205	13.4	--
2yr College	107	38.2%	3.42	42.1%	47.7%	211	--	8.2
4yr College/Univ.	5	1.8%	3.39	60.0%	20.0%	224	--	--
Unknown	0	0.0%	--	--	--	--	--	--
Total Arts	280	100.0%	3.36	48.9%	37.9%	208	13.4	8.2

* Five or fewer cases.

Bachelor Degrees in the Arts: Trends Profile - 1995/1996 to 2004/2005

Student Characteristics	N	%	Academic Profile			Units Mean	Time-to-Degree	
			GPA Mean	% GPA 3.0 - 3.5	% GPA ≥ 3.5		Freshmen Mean	C.C. Transfer Mean
Award Year								
2004/2005	296	100.0%	3.29	52%	30%	208	13.4	8.1
2003/2004	281	100.0%	3.34	44%	38%	211	13.8	8.0
2002/2003	300	100.0%	3.27	52%	26%	207	13.9	8.1
2001/2002	236	100.0%	3.25	52%	25%	202	13.6	8.5
2000/2001	214	100.0%	3.30	51%	31%	206	13.5	8.1
1999/2000	147	100.0%	3.26	47%	28%	205	13.4	8.4
1998/1999	156	100.0%	3.26	60%	23%	204	13.5	7.7
1997/1998	123	100.0%	3.28	56%	28%	210	13.6	8.4
1996/1997	168	100.0%	3.27	51%	29%	210	13.6	8.9
1995/1996	161	100.0%	3.25	45%	30%	211	13.2	9.4



Profile of Bachelor Degree Recipients Majoring in the Humanities: 2005/2006

Student Characteristics	N	%	Academic Profile				Time-to-Degree	
			GPA Mean	% GPA 3.0 - 3.5	% GPA ≥ 3.5	Units Mean	Freshmen Mean	C.C. Transfer Mean
Gender								
Female	167	59.6%	3.27	46.7%	29.9%	205	12.8	8.2
Male	113	40.4%	3.22	46.0%	27.4%	203	12.6	8.2
Ethnicity								
African Am.	3	1.1%	3.07	66.7%	0.0%	188	12.5	7.0
Asian	47	16.8%	3.19	53.2%	17.0%	210	13.3	9.4
Mexican Am.	38	13.6%	3.03	50.0%	10.5%	200	13.5	9.2
Filipino	6	2.1%	3.32	16.7%	50.0%	219	12.2	--
Latino	4	1.4%	3.28	25.0%	50.0%	197	10.5	5.0
Native Am.	0	0.0%	--	--	--	--	--	--
Caucasian	149	53.2%	3.32	45.0%	36.2%	204	12.3	7.8
Other	33	11.8%	3.26	45.5%	30.3%	203	13.7	7.9
College								
Revelle	33	11.8%	3.03	42.4%	12.1%	224	13.4	8.2
Muir	89	31.8%	3.36	39.3%	43.8%	203	12.8	8.5
Marshall	50	17.9%	3.18	44.0%	24.0%	197	12.3	8.2
Warren	44	15.7%	3.27	59.1%	20.5%	199	12.9	7.3
Roosevelt	59	21.1%	3.27	49.2%	27.1%	204	12.8	9.9
Sixth	5	1.8%	3.39	80.0%	20.0%	218	11.5	6.0
School Type								
High School	180	64.3%	3.30	46.1%	32.8%	206	12.8	--
2yr College	97	34.6%	3.17	47.4%	21.6%	200	--	8.2
4yr College/Univ.	3	1.1%	3.22	33.3%	33.3%	229	--	--
Unknown	0	0.0%	--	--	--	--	--	--
Total Humanities	280	100.0%	3.25	46.4%	28.9%	204	12.8	8.2

* Five or fewer cases.

Bachelor Degrees in the Humanities: Trends Profile - 1995/1996 to 2004/2005

Student Characteristics	N	%	Academic Profile				Time-to-Degree	
			GPA Mean	% GPA 3.0 - 3.5	% GPA ≥ 3.5	Units Mean	Freshmen Mean	C.C. Transfer Mean
Award Year								
2004/2005	259	100.0%	3.24	45%	29%	203	12.8	8.4
2003/2004	253	100.0%	3.22	47%	28%	204	13.1	7.7
2002/2003	226	100.0%	3.17	43%	24%	205	13.4	8.0
2001/2002	244	100.0%	3.16	43%	22%	203	13.7	8.3
2000/2001	273	100.0%	3.14	48%	19%	202	13.6	7.6
1999/2000	256	100.0%	3.17	44%	24%	201	13.5	8.6
1998/1999	312	100.0%	3.19	45%	27%	201	13.4	9.2
1997/1998	291	100.0%	3.18	44%	26%	202	13.5	8.6
1996/1997	307	100.0%	3.15	48%	19%	201	12.9	8.7
1995/1996	305	100.0%	3.15	49%	21%	202	13.3	8.4

The majority (60%) of students earning a bachelor's degree in humanities were female.

Muir College awarded the largest number of humanities degrees followed by Roosevelt College.

Three-quarters (75%) of humanities majors graduated with a 'B' or better grade point average; the mean GPA was 3.25, respectively.

Profile of Bachelor Degree Recipients Majoring in Engineering: 2005/2006



The majority (80%) of engineering degrees were awarded to males.

Warren College continues to award the largest proportion (44%) of bachelor's degrees in engineering.

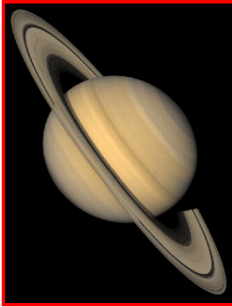
Fifty-eight percent of engineering majors graduated with a GPA of 'B' or higher; the average GPA for graduating engineering students was 3.11, respectively.

Student Characteristics	N	%	Academic Profile				Time-to-Degree	
			GPA Mean	% GPA 3.0 - 3.5	% GPA ≥ 3.5	Units Mean	Freshmen Mean	C.C. Transfer Mean
Gender								
Female	186	19.9%	3.16	39.8%	22.0%	232	13.3	9.2
Male	747	80.1%	3.09	37.3%	19.1%	232	13.8	9.7
Ethnicity								
African Am.	10	1.1%	2.70	20.0%	0.0%	227	12.5	9.8
Asian	441	47.3%	3.10	38.1%	19.0%	233	13.7	9.6
Mexican Am.	28	3.0%	3.03	25.0%	14.3%	233	14.4	10.3
Filipino	43	4.6%	2.88	32.6%	4.7%	228	14.6	9.3
Latino	13	1.4%	3.12	46.2%	7.7%	229	13.0	7.8
Native Am.	4	0.4%	3.62	25.0%	75.0%	242	13.3	7.0
Caucasian	261	28.0%	3.18	40.2%	23.8%	229	13.7	10.1
Other	133	14.3%	3.10	37.6%	21.1%	233	13.8	9.2
College								
Revelle	159	17.0%	3.09	39.0%	18.9%	238	14.0	9.1
Muir	148	15.9%	3.12	37.8%	20.3%	230	13.5	9.4
Marshall	123	13.2%	3.03	40.7%	9.8%	232	14.2	10.2
Warren	408	43.7%	3.15	37.7%	23.3%	227	13.5	9.7
Roosevelt	73	7.8%	2.95	31.5%	12.3%	245	14.7	9.8
Sixth	22	2.4%	3.26	36.4%	36.4%	232	12.3	--
School Type								
High School	635	68.1%	3.15	40.5%	21.4%	231	13.7	--
2yr College	290	31.1%	3.01	32.1%	16.2%	232	--	9.6
4yr College/Univ.	8	0.9%	3.02	37.5%	12.5%	234	--	--
Unknown	0	0.0%	--	--	--	--	--	--
Total Engineering	933	100.0%	3.11	37.8%	19.7%	232	13.7	9.6

* Five or fewer cases.

Bachelor Degrees in Engineering: Trends Profile - 1995/1996 to 2004/2005

Student Characteristics	N	%	Academic Profile				Time-to-Degree	
			GPA Mean	% GPA 3.0 - 3.5	% GPA ≥ 3.5	Units Mean	Freshmen Mean	C.C. Transfer Mean
Award Year								
2004/2005	998	100.0%	3.14	41%	22%	230	13.4	9.3
2003/2004	654	100.0%	3.10	40%	19%	228	13.9	10.0
2002/2003	674	100.0%	3.11	38%	21%	227	13.9	9.8
2001/2002	563	100.0%	3.08	42%	16%	225	13.9	9.8
2000/2001	540	100.0%	3.10	43%	18%	224	13.8	9.6
1999/2000	533	100.0%	3.08	39%	17%	227	13.9	10.0
1998/1999	446	100.0%	3.13	41%	20%	228	14.2	9.9
1997/1998	402	100.0%	3.12	43%	19%	230	14.2	9.8
1996/1997	398	100.0%	3.09	37%	20%	230	14.3	10.8
1995/1996	424	100.0%	3.13	41%	21%	231	14.6	10.5



Profile of Bachelor Degree Recipients Majoring in Science and Math: 2005/2006

Student Characteristics	N	%	Academic Profile				Time-to-Degree	
			GPA Mean	% GPA 3.0 - 3.5	% GPA ≥ 3.5	Units Mean	Freshmen Mean	C.C. Transfer Mean
Gender								
Female	714	58.7%	3.16	38.1%	25.8%	217	12.9	8.1
Male	502	41.3%	3.17	38.8%	26.1%	213	13.0	8.3
Ethnicity								
African Am.	12	1.0%	2.82	16.7%	16.7%	210	12.8	7.0
Asian	464	38.2%	3.13	40.3%	22.0%	219	12.8	8.6
Mexican Am.	68	5.6%	2.93	25.0%	14.7%	211	13.4	8.2
Filipino	78	6.4%	2.96	33.3%	11.5%	210	12.9	7.4
Latino	24	2.0%	3.16	37.5%	20.8%	218	13.3	8.2
Native Am.	7	0.6%	3.24	42.9%	28.6%	212	15.2	8.5
Caucasian	406	33.4%	3.27	41.6%	32.5%	214	13.0	8.3
Other	157	12.9%	3.24	34.4%	33.8%	212	12.5	7.6
College								
Revelle	351	28.9%	3.15	37.6%	25.4%	219	13.0	8.9
Muir	223	18.3%	3.24	31.8%	36.3%	214	12.7	7.5
Marshall	195	16.0%	3.10	40.0%	17.9%	209	13.1	8.4
Warren	325	26.7%	3.17	37.5%	26.5%	216	13.0	7.9
Roosevelt	93	7.6%	3.12	49.5%	18.3%	218	13.1	8.4
Sixth	29	2.4%	3.33	62.1%	24.1%	210	11.8	5.7
School Type								
High School	933	76.7%	3.22	40.2%	28.7%	217	12.9	--
2yr College	270	22.2%	3.00	32.2%	16.7%	209	--	8.2
4yr College/Univ.	13	1.1%	3.06	38.5%	15.4%	220	--	--
Unknown	0	0.0%	--	--	--	--	--	--
Total Science/Math	1,216	100.0%	3.17	38.4%	25.9%	215	12.9	8.2

The majority of science/math degrees were awarded to females.

Approximately 64% of science/math majors graduated with a 'B' or better GPA; twenty-six percent graduated with a GPA of 'B+' or better.

* Five or fewer cases.

Bachelor Degrees in Science and Math: Trends Profile - 1995/1996 to 2004/2005

Student Characteristics	N	%	Academic Profile				Time-to-Degree	
			GPA Mean	% GPA 3.0 - 3.5	% GPA ≥ 3.5	Units Mean	Freshmen Mean	C.C. Transfer Mean
Award Year								
2004/2005	1,079	100.0%	3.12	38%	25%	215	13.0	8.6
2003/2004	920	100.0%	3.11	35%	24%	214	13.3	8.5
2002/2003	994	100.0%	3.12	38%	23%	212	13.2	8.6
2001/2002	957	100.0%	3.10	39%	22%	211	13.3	9.1
2000/2001	1,029	100.0%	3.10	36%	23%	211	13.1	9.1
1999/2000	1,102	100.0%	3.09	37%	23%	211	13.4	9.1
1998/1999	1,160	100.0%	3.10	36%	22%	208	13.3	8.6
1997/1998	1,040	100.0%	3.11	39%	22%	210	13.4	8.7
1996/1997	1,122	100.0%	3.09	37%	21%	210	13.3	9.1
1995/1996	1,030	100.0%	3.09	39%	21%	209	13.3	9.4

Profile of Bachelor Degree Recipients Majoring in the Social Sciences: 2005/2006



The majority of social science degree recipients were female (61%).

Approximately 65% of social science majors graduated with a GPA of 3.0 or higher; twenty-two percent graduated with a GPA of 3.5 or higher.

Student Characteristics	N	%	Academic Profile				Time-to-Degree	
			GPA Mean	% GPA 3.0 - 3.5	% GPA ≥ 3.5	Units Mean	Freshmen Mean	C.C. Transfer Mean
Gender								
Female	1,514	60.9%	3.19	43.7%	24.3%	199	12.5	7.2
Male	972	39.1%	3.08	40.1%	19.0%	200	12.8	7.5
Ethnicity								
African Am.	31	1.2%	3.04	35.5%	12.9%	204	12.7	9.5
Asian	748	30.1%	3.05	41.2%	14.3%	201	12.7	6.8
Mexican Am.	196	7.9%	3.03	39.3%	13.8%	196	13.1	7.5
Filipino	125	5.0%	2.99	35.2%	15.2%	199	13.2	7.8
Latino	67	2.7%	3.10	29.9%	23.9%	200	13.3	8.2
Native Am.	9	0.4%	3.17	33.3%	22.2%	202	12.3	5.5
Caucasian	960	38.6%	3.26	46.4%	29.9%	199	12.3	7.4
Other	350	14.1%	3.17	41.1%	26.0%	200	12.7	7.4
College								
Revelle	275	11.1%	3.03	36.0%	16.0%	209	13.1	8.6
Muir	522	21.0%	3.21	44.1%	28.0%	197	12.4	7.3
Marshall	593	23.9%	3.11	42.0%	18.7%	197	12.8	7.2
Warren	522	21.0%	3.12	41.2%	20.9%	198	12.6	7.1
Roosevelt	502	20.2%	3.19	46.4%	23.3%	204	12.5	8.2
Sixth	72	2.9%	3.28	36.1%	36.1%	196	11.6	6.0
School Type								
High School	1,726	69.4%	3.19	44.4%	24.7%	202	12.6	--
2yr College	710	28.6%	3.04	36.3%	16.6%	195	--	7.3
4yr College/Univ.	44	1.8%	3.22	61.4%	18.2%	200	--	--
Unknown	6	0.2%	2.78	16.7%	16.7%	236	--	--
Total Social Sci.	2,486	100.0%	3.15	42.3%	22.2%	200	12.6	7.3

* Five or fewer cases.

Bachelor Degrees in Social Sciences: Trends Profile - 1995/1996 to 2004/2005

Student Characteristics	N	%	Academic Profile				Time-to-Degree	
			GPA Mean	% GPA 3.0 - 3.5	% GPA ≥ 3.5	Units Mean	Freshmen Mean	C.C. Transfer Mean
Award Year								
2004/2005	2,406	100.0%	3.12	43%	20%	199	12.8	7.1
2003/2004	2,022	100.0%	3.14	42%	22%	199	13.0	7.3
2002/2003	2,051	100.0%	3.10	42%	19%	198	13.0	7.5
2001/2002	1,916	100.0%	3.09	45%	17%	197	13.0	7.7
2000/2001	1,649	100.0%	3.11	44%	18%	197	12.8	7.8
1999/2000	1,494	100.0%	3.09	42%	18%	196	13.2	8.1
1998/1999	1,494	100.0%	3.08	42%	17%	195	12.9	7.9
1997/1998	1,362	100.0%	3.06	44%	15%	197	12.9	7.9
1996/1997	1,320	100.0%	3.09	40%	19%	196	13.1	7.8
1995/1996	1,388	100.0%	3.09	43%	18%	197	13.1	8.1



Degrees Conferred is an annual publication of the
Office of Student Research & Information,
Student Affairs, 858-534-2382.

This document is also available on the
World Wide Web at:

studentresearch.ucsd.edu