

Degrees Conferred

Profile of Degree Recipients

2010 - 2011



University of California, San Diego
Office of Student Research & Information
Student Affairs
studentresearch.ucsd.edu

DEGREES CONFERRED

Profile of Degree Recipients

2010- 2011

University of California, San Diego

William B. Armstrong, Ph.D.
Director

Heidi M. Carty, Ph.D.
Principal Research Analyst

Greg Martin
Programmer Analyst

Jason R. Thornton
Research Analyst

Student Research & Information
Student Affairs
University of California, San Diego
La Jolla, CA 92093-0088
<http://studentresearch.ucsd.edu>

Highlights

- UC San Diego awarded a combined total of 8,161 undergraduate, graduate and medical degrees during the 2010/2011 academic year. A record high number (N=1,071) of Master's degrees were awarded in 2010/2011.
- The majority (53%) of undergraduate, medical (53%) and graduate pharmaceutical degrees (74%) were awarded to females, while the majority of master's degrees (59%) and Ph.D.s (58%) were awarded to males.
- UCSD awarded 6,137 undergraduate degrees in 2010/2011. Of these, the largest percentage (47%; 2,906) were granted to social science majors, followed by biology majors (24%; 1,483).
- Approximately, 56% of the undergraduate degrees awarded in 2010/2011 were earned by students of color.
- More than one-half (54%) of all first-time freshmen who earned a bachelor's degree at UCSD did so in four years; just under three-quarters (73%) graduated within 13 quarters or just over four years.
- On average, transfer students took three years to complete their bachelor degree requirements at UCSD, over three-quarters (79%) graduated within nine quarters.
- Approximately 65% of the 2010/2011 undergraduate degree recipients graduated with a grade point average of 3.0 ('B') or higher; approximately one in four (23%) graduated with a grade point average of 3.5 ('B+') or higher.
- The average GPA for all undergraduate degree recipients in 2010/2011 was 3.15. The average GPA for the 2010/2011 first-time freshmen graduates was 3.19. The average GPA for the 2010/2011 transfer students was 3.07.
- Relative to other disciplinary areas a larger proportion of arts majors (88%) graduated with a GPA of 'B' or better. The average GPA for arts majors was 3.39.

All Degree Types

2010 / 2011

UC San Diego Awarded a Total of 8,161 Undergraduate, Graduate and Medical Degrees During the 2010/2011 Academic Year.

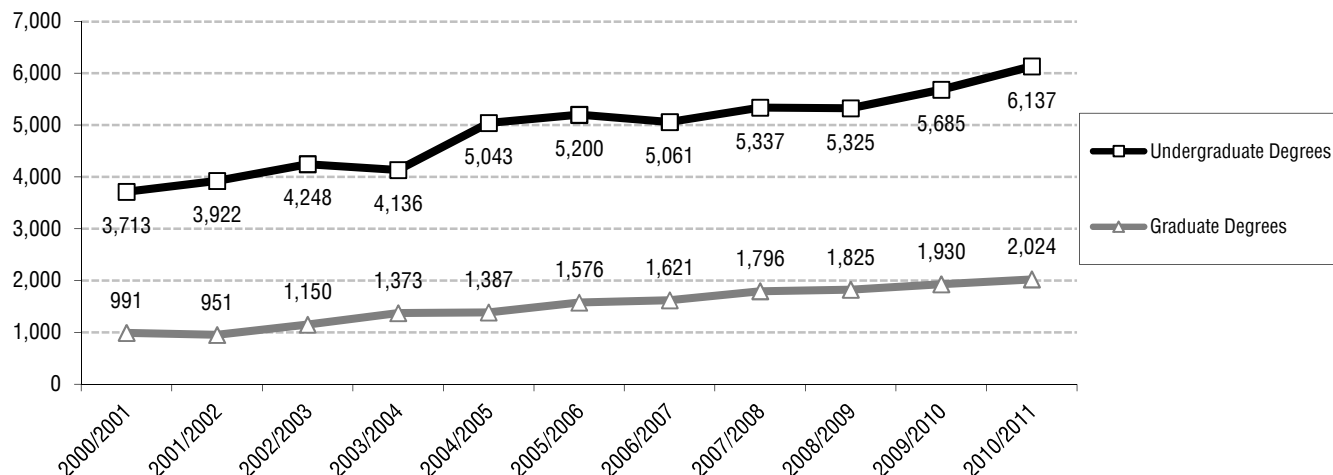
Degrees by the Numbers

| Award Year | Bachelor | Master | Candidate in Phil. | Doctor of Philosophy | Doctor of Medicine | Doctor of Pharmacy | Total |
|------------|----------|--------|--------------------|----------------------|--------------------|--------------------|-------|
| 2010/2011 | 6,137 | 1,071 | 276 | 491 | 129 | 57 | 8,161 |
| 2009/2010 | 5,685 | 1,033 | 262 | 459 | 122 | 54 | 7,615 |
| 2008/2009 | 5,325 | 990 | 234 | 437 | 109 | 55 | 7,150 |
| 2007/2008 | 5,337 | 894 | 258 | 488 | 125 | 31 | 7,133 |
| 2006/2007 | 5,061 | 901 | 185 | 387 | 101 | 47 | 6,682 |
| 2005/2006 | 5,200 | 761 | 253 | 354 | 186 | 22 | 6,776 |
| 2004/2005 | 5,043 | 797 | 170 | 303 | 117 | -- | 6,430 |
| 2003/2004 | 4,136 | 785 | 161 | 327 | 100 | -- | 5,509 |
| 2002/2003 | 4,248 | 573 | 170 | 279 | 128 | -- | 5,398 |
| 2001/2002 | 3,922 | 495 | 117 | 278 | 61 | -- | 4,873 |
| 2000/2001 | 3,713 | 423 | 147 | 285 | 136 | -- | 4,704 |



8,161 students graduated from UCSD in 2010/2011. A record high (N=1,071) number of Master's degrees were awarded in 2010/2011.

Trends in Degrees Awarded





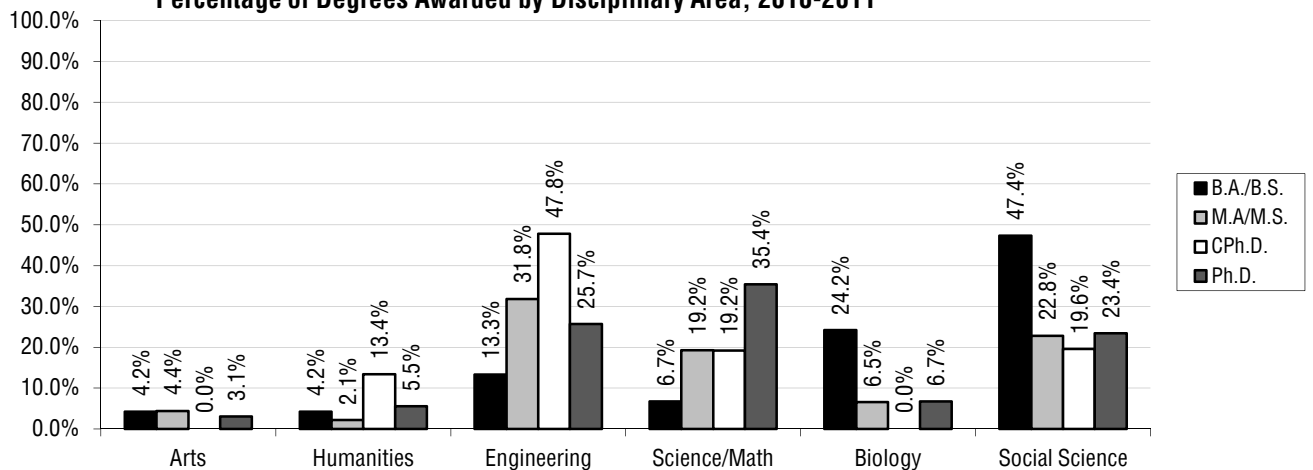
Student Characteristics: All Degree Types 2010/2011

The majority (53%) of bachelor's degrees were awarded to females.

Most popular major by degree type: Almost one-half (47%) of all bachelor's degrees were awarded to social science majors. Approximately, 32% of all master's degrees were awarded to engineering majors. The largest number (35%) of degree recipients earning a Ph.D. were science/math majors.

| Background Characteristics | B.A./B.S. N=6,137 | | M.A./M.S. N=1,071 | | CPh.D. N=276 | | Ph.D. N=491 | | M.D. N=129 | | Pharm. N=57 | | Total N=8,161 | |
|----------------------------|----------------------|-------|----------------------|-------|-----------------|-------|----------------|-------|---------------|--------|----------------|--------|------------------|-------|
| | N | % | N | % | N | % | N | % | N | % | N | % | N | % |
| Gender | | | | | | | | | | | | | | |
| Female | 3,244 | 52.9% | 439 | 41.0% | 89 | 32.2% | 205 | 41.8% | 68 | 52.7% | 42 | 73.7% | 4,087 | 50.1% |
| Male | 2,893 | 47.1% | 632 | 59.0% | 187 | 67.8% | 286 | 58.2% | 61 | 47.3% | 15 | 26.3% | 4,074 | 49.9% |
| Ethnicity | | | | | | | | | | | | | | |
| African Am. | 84 | 1.4% | 11 | 1.0% | 5 | 1.8% | 6 | 1.2% | 1 | 0.8% | 0 | 0.0% | 107 | 1.3% |
| Asian | 2,418 | 39.4% | 171 | 16.0% | 23 | 8.3% | 55 | 11.2% | 36 | 27.9% | 23 | 40.4% | 2,726 | 33.4% |
| Mexican Am. | 509 | 8.3% | 33 | 3.1% | 9 | 3.3% | 23 | 4.7% | 7 | 5.4% | 3 | 5.3% | 584 | 7.2% |
| Filipino | 244 | 4.0% | 10 | 0.9% | 0 | 0.0% | 3 | 0.6% | 2 | 1.6% | 0 | 0.0% | 259 | 3.2% |
| Latino | 175 | 2.9% | 27 | 2.5% | 4 | 1.4% | 10 | 2.0% | 3 | 2.3% | 1 | 1.8% | 220 | 2.7% |
| Native Am. | 29 | 0.5% | 9 | 0.8% | 1 | 0.4% | 0 | 0.0% | 2 | 1.6% | 0 | 0.0% | 41 | 0.5% |
| Caucasian | 1,551 | 25.3% | 437 | 40.8% | 130 | 47.1% | 250 | 50.9% | 47 | 36.4% | 15 | 26.3% | 2,430 | 29.8% |
| Other | 1,127 | 18.4% | 373 | 34.8% | 104 | 37.7% | 144 | 29.3% | 31 | 24.0% | 15 | 26.3% | 1,794 | 22.0% |
| Disciplinary Area | | | | | | | | | | | | | | |
| Arts | 256 | 4.2% | 47 | 4.4% | 0 | 0.0% | 15 | 3.1% | 0 | 0.0% | 0 | 0.0% | 318 | 3.9% |
| Humanities | 260 | 4.2% | 23 | 2.1% | 37 | 13.4% | 27 | 5.5% | 0 | 0.0% | 0 | 0.0% | 347 | 4.3% |
| Engineering | 818 | 13.3% | 341 | 31.8% | 132 | 47.8% | 126 | 25.7% | 0 | 0.0% | 0 | 0.0% | 1,417 | 17.4% |
| Science/Math | 413 | 6.7% | 206 | 19.2% | 53 | 19.2% | 174 | 35.4% | 129 | 100.0% | 57 | 100.0% | 1,032 | 12.6% |
| Biology | 1,483 | 24.2% | 70 | 6.5% | 0 | 0.0% | 33 | 6.7% | 0 | 0.0% | 0 | 0.0% | 1,586 | 19.4% |
| Social Science | 2,906 | 47.4% | 244 | 22.8% | 54 | 19.6% | 115 | 23.4% | 0 | 0.0% | 0 | 0.0% | 3,319 | 40.7% |
| DbI/Special | 1 | 0.0% | 14 | 1.3% | 0 | 0.0% | 1 | 0.2% | 0 | 0.0% | 0 | 0.0% | 16 | 0.2% |
| Management | 0 | 0.0% | 126 | 11.8% | 0 | 0.0% | 0 | 0.0% | 0 | 0.0% | 0 | 0.0% | 126 | 1.5% |
| College | | | | | | | | | | | | | | |
| Revelle | 881 | 14.4% | NA | NA | NA | NA | NA | NA | NA | NA | NA | NA | NA | NA |
| John Muir | 1,135 | 18.5% | NA | NA | NA | NA | NA | NA | NA | NA | NA | NA | NA | NA |
| Thurgood Marshall | 1,110 | 18.1% | NA | NA | NA | NA | NA | NA | NA | NA | NA | NA | NA | NA |
| Earl Warren | 1,152 | 18.8% | NA | NA | NA | NA | NA | NA | NA | NA | NA | NA | NA | NA |
| Eleanor Roosevelt | 945 | 15.4% | NA | NA | NA | NA | NA | NA | NA | NA | NA | NA | NA | NA |
| Sixth | 914 | 14.9% | NA | NA | NA | NA | NA | NA | NA | NA | NA | NA | NA | NA |

Percentage of Degrees Awarded by Disciplinary Area, 2010-2011

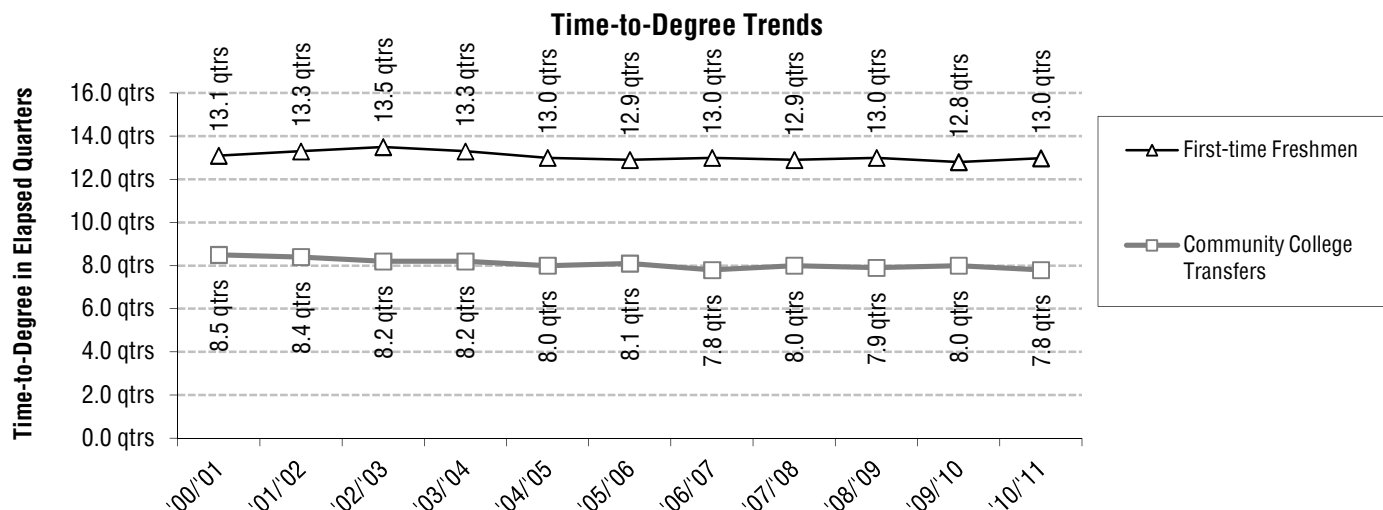


Bachelor Degrees

Trends in Time-to-Degree¹: Academic Performance

| Academic Performance | Award Year | | | | | | | | | | |
|---|------------|---------|---------|---------|---------|---------|---------|---------|---------|---------|---------|
| | '00/'01 | '01/'02 | '02/'03 | '03/'04 | '04/'05 | '05/'06 | '06/'07 | '07/'08 | '08/'09 | '09/'10 | '10/'11 |
| Bachelor Degree Recipients Who Entered From High School | | | | | | | | | | | |
| Average Time-to-Degree | 13.1 | 13.3 | 13.5 | 13.3 | 13.0 | 12.9 | 13.0 | 12.9 | 13.0 | 12.8 | 13.0 |
| Median Time-to-Degree | 12.0 | 12.0 | 12.0 | 12.0 | 12.0 | 12.0 | 12.0 | 12.0 | 12.0 | 12.0 | 12.0 |
| Average Units | 205 | 205 | 207 | 209 | 210 | 211 | 213 | 213 | 213 | 215 | 217 |
| GPA at Graduation | 3.16 | 3.14 | 3.16 | 3.19 | 3.19 | 3.20 | 3.17 | 3.18 | 3.16 | 3.20 | 3.19 |
| % with GPA = 3.0 - 3.5 | 45% | 45% | 43% | 43% | 44% | 43% | 43% | 43% | 42% | 44% | 43% |
| % with GPA \geq 3.5 | 22% | 20% | 23% | 25% | 26% | 26% | 25% | 25% | 24% | 27% | 26% |
| Bachelor Degree Recipients Who Entered From a Two-Year Community College | | | | | | | | | | | |
| Average Time-to-Degree | 8.5 | 8.4 | 8.2 | 8.2 | 8.0 | 8.1 | 7.8 | 8.0 | 7.9 | 8.0 | 7.8 |
| Median Time-to-Degree | 8.0 | 7.0 | 6.0 | 6.0 | 6.0 | 6.0 | 6.0 | 6.0 | 6.0 | 7.0 | 7.0 |
| Average Units | 207 | 205 | 206 | 205 | 206 | 206 | 205 | 206 | 207 | 206 | 206 |
| GPA at Graduation | 3.05 | 3.03 | 3.04 | 3.06 | 3.04 | 3.06 | 3.06 | 3.04 | 3.03 | 3.04 | 3.07 |
| % with GPA = 3.0 - 3.5 | 37% | 40% | 36% | 37% | 39% | 36% | 37% | 37% | 36% | 34% | 38% |
| % with GPA \geq 3.5 | 16% | 15% | 17% | 20% | 17% | 19% | 19% | 18% | 18% | 19% | 20% |
| Total Bachelor Degree Recipients | | | | | | | | | | | |
| Average Units | 206 | 205 | 207 | 208 | 209 | 210 | 210 | 211 | 211 | 212 | 213 |
| GPA at Graduation | 3.12 | 3.11 | 3.12 | 3.15 | 3.14 | 3.16 | 3.14 | 3.14 | 3.12 | 3.15 | 3.15 |
| % with GPA = 3.0 - 3.5 | 42% | 43% | 41% | 41% | 42% | 41% | 41% | 41% | 40% | 41% | 41% |
| % with GPA \geq 3.5 | 20% | 19% | 21% | 23% | 23% | 24% | 23% | 23% | 22% | 24% | 23% |

¹Time-to-Degree is reported in elapsed quarters from first enrollment date to graduation. Only the records of students who enter UCSD in the Fall quarter are included in time-to-degree calculations. An academic year is defined as three quarters; twelve quarters equal four years. Summer degrees are combined with fall degrees and represent one quarter.



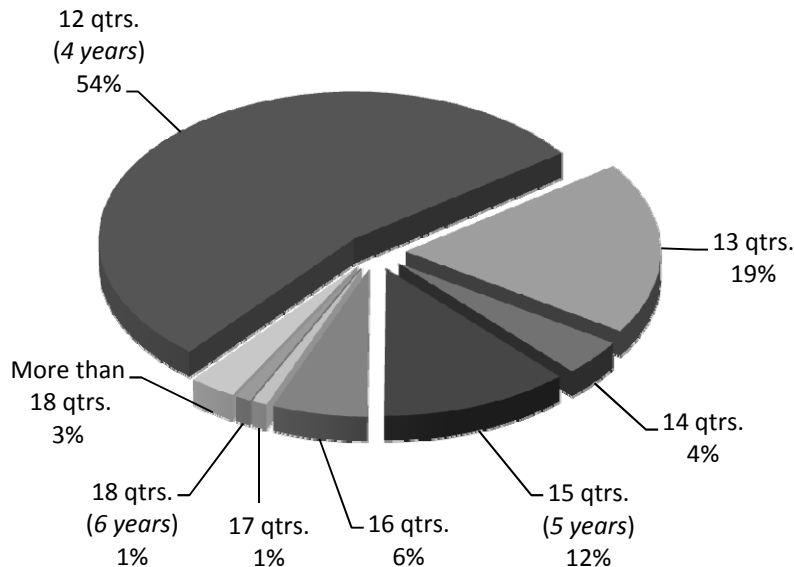
Nominal Time-to-Degree: 2010/2011

The average first-time freshman takes 4.3 years to graduate. Fifty-four percent of first-time freshmen earning a bachelor's degree at UCSD did so within 4 years; almost three-quarters (73%) graduated within 13 quarters or just over 4 years, 89% within 5 years, and 97% within 6 years (18 quarters).

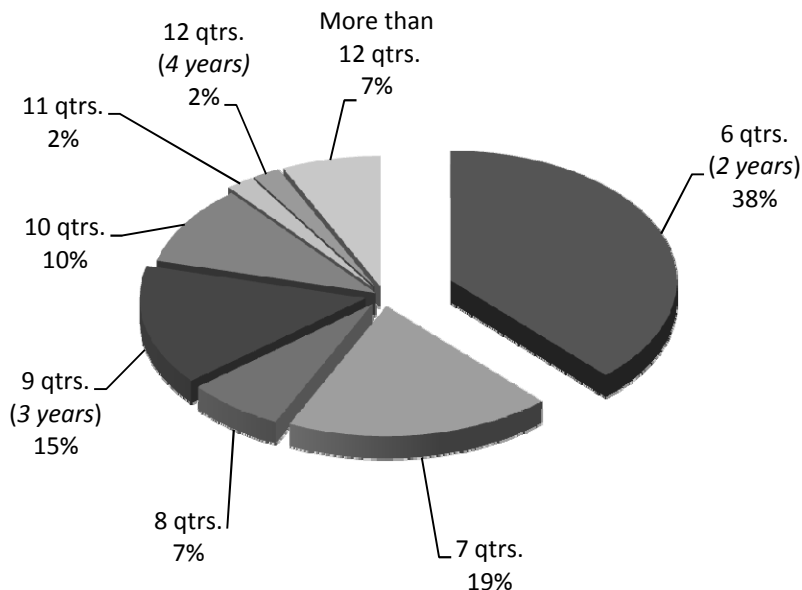
First-Time Freshmen

Cumulative Frequency:

- 54% graduated within 12 qtrs.
- 73% graduated within 13 qtrs.
- 77% graduated within 14 qtrs.
- 89% graduated within 15 qtrs.
- 95% graduated within 16 qtrs.
- 96% graduated within 17 qtrs.
- 97% graduated within 18 qtrs.



On average, transfer students took 2.6 years to complete their bachelor degree requirements at UCSD. Over three-quarters (79%) graduated within 3 years (9 quarters), and just over one-third (38%) graduated within 2 years (6 quarters).



Community College Transfer

Cumulative Frequency:

- 38% graduated within 6 qtrs.
- 57% graduated within 7 qtrs.
- 64% graduated within 8 qtrs.
- 79% graduated within 9 qtrs.
- 89% graduated within 10 qtrs.
- 91% graduated within 11 qtrs.
- 93% graduated within 12 qtrs.



Characteristics of Bachelor Degree Recipients: 2010/2011

| Student Characteristics | N | % | Academic Profile | | | | Time-to-Degree | |
|--|--------------|---------------|------------------|-----------------|--------------|------------|----------------|---------------------------------|
| | | | GPA Mean | % GPA 3.0 - 3.5 | % GPA ≥ 3.5 | Units Mean | Freshmen Mean | C.C. Transfer ² Mean |
| Gender | | | | | | | | |
| Female | 3,244 | 52.9% | 3.18 | 42.0% | 25.2% | 212 | 12.8 | 7.5 |
| Male | 2,893 | 47.1% | 3.12 | 40.4% | 21.0% | 215 | 13.3 | 8.1 |
| Ethnicity | | | | | | | | |
| African Am. | 84 | 1.4% | 3.00 | 38.1% | 11.9% | 205 | 13.8 | 8.2 |
| Asian | 2,418 | 39.4% | 3.08 | 39.7% | 18.0% | 213 | 13.0 | 7.7 |
| Mexican Am. | 509 | 8.3% | 3.03 | 38.3% | 15.1% | 209 | 13.7 | 7.7 |
| Filipino | 244 | 4.0% | 3.03 | 40.6% | 13.9% | 214 | 13.0 | 8.5 |
| Latino | 175 | 2.9% | 3.09 | 42.3% | 17.7% | 209 | 13.0 | 8.2 |
| Native Am. | 29 | 0.5% | 3.12 | 37.9% | 17.2% | 206 | 13.8 | 7.4 |
| Caucasian | 1,551 | 25.3% | 3.23 | 45.5% | 27.1% | 210 | 12.9 | 7.7 |
| Other | 1,127 | 18.4% | 3.30 | 40.5% | 36.6% | 222 | 12.7 | 8.1 |
| Disciplinary Area | | | | | | | | |
| Arts | 256 | 4.2% | 3.39 | 45.7% | 42.2% | 215 | 13.3 | 8.5 |
| Humanities | 260 | 4.2% | 3.30 | 47.7% | 31.2% | 209 | 12.8 | 7.2 |
| Engineering | 818 | 13.3% | 3.13 | 40.7% | 20.8% | 236 | 13.6 | 9.7 |
| Science/Math | 413 | 6.7% | 3.10 | 38.7% | 22.8% | 226 | 13.4 | 8.8 |
| Biology | 1,483 | 24.2% | 3.15 | 41.3% | 23.7% | 218 | 12.9 | 8.4 |
| Social Science | 2,906 | 47.4% | 3.12 | 40.8% | 21.4% | 203 | 12.8 | 7.1 |
| DbI/Special | 1 | 0.0% | 3.79 | 0.0% | 100.0% | 213 | -- | 11.0 |
| College | | | | | | | | |
| Revelle | 881 | 14.4% | 3.11 | 41.1% | 19.8% | 222 | 13.1 | 9.0 |
| Muir | 1,135 | 18.5% | 3.20 | 40.4% | 27.9% | 214 | 13.0 | 7.9 |
| Marshall | 1,110 | 18.1% | 3.14 | 40.2% | 23.2% | 207 | 12.9 | 7.5 |
| Warren | 1,152 | 18.8% | 3.14 | 38.7% | 24.3% | 214 | 13.0 | 7.9 |
| Roosevelt | 945 | 15.4% | 3.15 | 40.8% | 23.9% | 213 | 12.8 | 7.8 |
| Sixth | 914 | 14.9% | 3.14 | 47.4% | 18.7% | 212 | 13.1 | 7.5 |
| School Type | | | | | | | | |
| High School | 3,975 | 64.8% | 3.19 | 43.1% | 25.3% | 217 | 13.0 | -- |
| 2yr College | 2,048 | 33.4% | 3.07 | 37.4% | 19.5% | 206 | -- | 7.8 |
| 4yr College/Univ. | 104 | 1.7% | 3.17 | 47.1% | 20.2% | 214 | -- | -- |
| Unknown | 10 | 0.2% | 2.88 | 30.0% | 0.0% | 208 | -- | -- |
| First Generation College Status | | | | | | | | |
| First Generation | 1,776 | 28.9% | 3.06 | 40.1% | 16.2% | 211 | 13.2 | 7.9 |
| Not First Generation | 4,361 | 71.1% | 3.18 | 41.7% | 26.1% | 214 | 12.9 | 7.8 |
| Income | | | | | | | | |
| High: > \$98,401 | 1,356 | 22.1% | 3.23 | 42.8% | 29.6% | 213 | 12.7 | 7.4 |
| Medium High: \$65,601 - \$98,400 | 694 | 11.3% | 3.14 | 39.8% | 24.4% | 213 | 13.0 | 8.2 |
| Medium Low: \$32,801 - \$65,600 | 1,177 | 19.2% | 3.10 | 43.6% | 17.7% | 214 | 13.1 | 7.9 |
| Low: < \$32,800 | 1,248 | 20.3% | 3.04 | 38.5% | 14.7% | 213 | 13.4 | 8.3 |
| Missing/Undeclared | 1,662 | 27.1% | 3.20 | 41.0% | 28.0% | 213 | 12.7 | 7.7 |
| Total Population | 6,137 | 100.0% | 3.15 | 41.3% | 23.2% | 213 | 13.0 | 7.8 |

The majority of bachelor degree recipients are women (53%).

Social science majors account for almost one-half (47%) of the 2010/2011 undergraduate degree recipients.

Approximately, 65% of the undergraduate degree recipients graduated with GPA of 3.0 ('B') or higher. Approximately, 23% graduated with a GPA of 'B+' or higher.

² For Transfer students, time-to-degree is calculated only for those students who matriculate from a two-year community college (C.C.). The typical community college transfer student enters UCSD with 90 units of transferable academic credit.

On average, first-time freshmen take just over four years (13.0 quarters) to graduate. Community College transfer students tend to graduate in approximately three years or 8 quarters.

Profile of Bachelor Degree Recipients Majoring in the Arts: 2010/2011



The majority (56%) of the students graduating with a degree in arts were female.

Sixth College awarded the largest number of bachelor's degrees in arts compared to the other five colleges.

Relative to other disciplinary areas, a larger percentage (88%) of arts majors graduated with a GPA of 'B' or higher. The average GPA for arts majors was 3.39, respectively.

| Student Characteristics | N | % | Academic Profile | | | | Time-to-Degree | |
|--|-----|--------|------------------|-----------------|-------------|------------|----------------|--------------------|
| | | | GPA Mean | % GPA 3.0 - 3.5 | % GPA ≥ 3.5 | Units Mean | Freshmen Mean | C.C. Transfer Mean |
| Gender | | | | | | | | |
| Female | 142 | 55.5% | 3.45 | 40.8% | 50.0% | 216 | 13.2 | 8.4 |
| Male | 114 | 44.5% | 3.33 | 51.8% | 32.5% | 214 | 13.4 | 8.6 |
| Ethnicity | | | | | | | | |
| African Am. | 3 | 1.2% | 3.53 | 33.3% | 66.7% | 196 | 8.0 | 6.5 |
| Asian | 71 | 27.7% | 3.28 | 59.2% | 25.4% | 210 | 12.9 | 6.6 |
| Mexican Am. | 33 | 12.9% | 3.33 | 33.3% | 39.4% | 213 | 14.6 | 7.8 |
| Filipino | 14 | 5.5% | 3.34 | 57.1% | 35.7% | 231 | 13.4 | 9.5 |
| Latino | 4 | 1.6% | 3.52 | 50.0% | 50.0% | 201 | 13.3 | 7.0 |
| Native Am. | 1 | 0.4% | 3.69 | 0.0% | 100.0% | 184 | 12.0 | -- |
| Caucasian | 101 | 39.5% | 3.47 | 40.6% | 52.5% | 215 | 13.4 | 8.9 |
| Other | 29 | 11.3% | 3.45 | 41.4% | 48.3% | 227 | 12.9 | 9.4 |
| College | | | | | | | | |
| Revelle | 13 | 5.1% | 3.23 | 46.2% | 23.1% | 236 | 14.1 | -- |
| Muir | 57 | 22.3% | 3.45 | 50.9% | 42.1% | 212 | 13.1 | 9.6 |
| Marshall | 34 | 13.3% | 3.43 | 35.3% | 52.9% | 213 | 12.4 | 6.5 |
| Warren | 37 | 14.5% | 3.27 | 51.4% | 27.0% | 221 | 15.2 | 9.1 |
| Roosevelt | 34 | 13.3% | 3.34 | 47.1% | 41.2% | 221 | 13.0 | 9.3 |
| Sixth | 81 | 31.6% | 3.45 | 43.2% | 48.1% | 210 | 13.2 | 7.9 |
| School Type | | | | | | | | |
| High School | 152 | 59.4% | 3.34 | 51.3% | 34.2% | 217 | 13.3 | -- |
| 2yr College | 103 | 40.2% | 3.47 | 37.9% | 54.4% | 213 | -- | 8.5 |
| 4yr College/Univ. | 0 | 0.0% | -- | -- | -- | -- | -- | -- |
| Unknown | 1 | 0.4% | 2.90 | 0.0% | 0.0% | 207 | -- | -- |
| First Generation College Status | | | | | | | | |
| First Generation | 67 | 26.2% | 3.33 | 53.7% | 31.3% | 210 | 13.8 | 8.8 |
| Not First Generation | 189 | 73.8% | 3.42 | 42.9% | 46.0% | 217 | 13.1 | 8.4 |
| Income | | | | | | | | |
| High: > \$98,401 | 54 | 21.1% | 3.41 | 48.1% | 44.4% | 221 | 13.0 | 8.3 |
| Medium High: \$65,601 - \$98,400 | 34 | 13.3% | 3.37 | 47.1% | 41.2% | 215 | 13.5 | 10.0 |
| Medium Low: \$32,801 - \$65,600 | 52 | 20.3% | 3.33 | 44.2% | 38.5% | 211 | 13.5 | 8.1 |
| Low: < \$32,800 | 40 | 15.6% | 3.21 | 62.5% | 12.5% | 205 | 13.8 | 8.9 |
| Missing/Undeclared | 76 | 29.7% | 3.53 | 35.5% | 59.2% | 220 | 12.3 | 8.3 |
| Total Arts | 256 | 100.0% | 3.39 | 45.7% | 42.2% | 215 | 13.3 | 8.5 |

* Five or fewer cases.

Bachelor Degrees in the Arts: Trends Profile - 2000/2001 to 2009/2010

| Student Characteristics | N | % | Academic Profile | | | | Time-to-Degree | |
|-------------------------|-----|--------|------------------|-----------------|-------------|------------|----------------|--------------------|
| | | | GPA Mean | % GPA 3.0 - 3.5 | % GPA ≥ 3.5 | Units Mean | Freshmen Mean | C.C. Transfer Mean |
| Award Year | | | | | | | | |
| 2009/2010 | 219 | 100.0% | 3.39 | 48% | 38% | 213 | 13.1 | 8.4 |
| 2008/2009 | 249 | 100.0% | 3.31 | 48% | 34% | 210 | 13.6 | 8.1 |
| 2007/2008 | 232 | 100.0% | 3.35 | 47% | 37% | 213 | 13.8 | 8.5 |
| 2006/2007 | 257 | 100.0% | 3.35 | 51% | 34% | 211 | 13.9 | 8.3 |
| 2005/2006 | 280 | 100.0% | 3.36 | 49% | 38% | 208 | 13.4 | 8.2 |
| 2004/2005 | 296 | 100.0% | 3.29 | 52% | 30% | 208 | 13.4 | 8.1 |
| 2003/2004 | 281 | 100.0% | 3.34 | 44% | 38% | 211 | 13.8 | 8.0 |
| 2002/2003 | 300 | 100.0% | 3.27 | 52% | 26% | 207 | 13.9 | 8.1 |
| 2001/2002 | 236 | 100.0% | 3.25 | 52% | 25% | 202 | 13.6 | 8.5 |
| 2000/2001 | 214 | 100.0% | 3.30 | 51% | 31% | 206 | 13.5 | 8.1 |



Profile of Bachelor Degree Recipients Majoring in the Humanities: 2010/2011

| Student Characteristics | N | % | Academic Profile | | | | Time-to-Degree | |
|--|-----|--------|------------------|-----------------|-------------|------------|----------------|--------------------|
| | | | GPA Mean | % GPA 3.0 - 3.5 | % GPA ≥ 3.5 | Units Mean | Freshmen Mean | C.C. Transfer Mean |
| Gender | | | | | | | | |
| Female | 155 | 59.6% | 3.34 | 47.7% | 35.5% | 210 | 12.6 | 7.1 |
| Male | 105 | 40.4% | 3.23 | 47.6% | 24.8% | 206 | 13.3 | 7.4 |
| Ethnicity | | | | | | | | |
| African Am. | 7 | 2.7% | 3.32 | 14.3% | 42.9% | 210 | 10.5 | 8.0 |
| Asian | 53 | 20.4% | 3.27 | 49.1% | 30.2% | 214 | 12.8 | 7.2 |
| Mexican Am. | 24 | 9.2% | 3.32 | 37.5% | 37.5% | 203 | 12.8 | 7.0 |
| Filipino | 9 | 3.5% | 3.25 | 33.3% | 33.3% | 206 | 11.5 | 7.4 |
| Latino | 16 | 6.2% | 3.09 | 62.5% | 6.3% | 210 | 12.4 | 7.5 |
| Native Am. | 1 | 0.4% | 3.85 | 0.0% | 100.0% | 197 | -- | 6.0 |
| Caucasian | 105 | 40.4% | 3.31 | 59.0% | 27.6% | 204 | 13.1 | 6.7 |
| Other | 45 | 17.3% | 3.35 | 28.9% | 42.2% | 215 | 12.7 | 8.4 |
| College | | | | | | | | |
| Revelle | 27 | 10.4% | 3.17 | 40.7% | 22.2% | 223 | 13.2 | 12.5 |
| Muir | 63 | 24.2% | 3.38 | 52.4% | 36.5% | 215 | 12.5 | 7.0 |
| Marshall | 46 | 17.7% | 3.28 | 37.0% | 32.6% | 203 | 13.8 | 6.6 |
| Warren | 41 | 15.8% | 3.25 | 43.9% | 31.7% | 200 | 12.6 | 6.1 |
| Roosevelt | 55 | 21.2% | 3.29 | 54.5% | 27.3% | 203 | 12.4 | 7.1 |
| Sixth | 28 | 10.8% | 3.33 | 53.6% | 32.1% | 213 | 12.8 | 8.3 |
| School Type | | | | | | | | |
| High School | 141 | 54.2% | 3.35 | 47.5% | 36.2% | 211 | 12.8 | -- |
| 2yr College | 112 | 43.1% | 3.23 | 49.1% | 25.0% | 205 | -- | 7.2 |
| 4yr College/Univ. | 7 | 2.7% | 3.18 | 28.6% | 28.6% | 219 | -- | -- |
| Unknown | 0 | 0.0% | -- | -- | -- | -- | -- | -- |
| First Generation College Status | | | | | | | | |
| First Generation | 68 | 26.2% | 3.24 | 51.5% | 23.5% | 210 | 13.2 | 7.8 |
| Not First Generation | 192 | 73.8% | 3.31 | 46.4% | 33.9% | 208 | 12.7 | 7.0 |
| Income | | | | | | | | |
| High: > \$98,401 | 55 | 21.2% | 3.45 | 50.9% | 43.6% | 211 | 12.6 | 6.9 |
| Medium High: \$65,601 - \$98,400 | 26 | 10.0% | 3.33 | 46.2% | 42.3% | 204 | 11.7 | 7.9 |
| Medium Low: \$32,801 - \$65,600 | 41 | 15.8% | 3.18 | 56.1% | 17.1% | 214 | 12.5 | 7.7 |
| Low: < \$32,800 | 44 | 16.9% | 3.22 | 50.0% | 20.5% | 212 | 13.6 | 7.2 |
| Missing/Undeclared | 94 | 36.2% | 3.28 | 41.5% | 31.9% | 204 | 13.0 | 7.0 |
| Total Humanities | 260 | 100.0% | 3.30 | 47.7% | 31.2% | 209 | 12.8 | 7.2 |

* Five or fewer cases.

Bachelor Degrees in the Humanities: Trends Profile - 2000/2001 to 2009/2010

| Student Characteristics | N | % | Academic Profile | | | | Time-to-Degree | |
|-------------------------|-----|--------|------------------|-----------------|-------------|------------|----------------|--------------------|
| | | | GPA Mean | % GPA 3.0 - 3.5 | % GPA ≥ 3.5 | Units Mean | Freshmen Mean | C.C. Transfer Mean |
| Award Year | | | | | | | | |
| 2009/2010 | 255 | 100.0% | 3.25 | 43% | 29% | 207 | 12.7 | 8.3 |
| 2008/2009 | 260 | 100.0% | 3.19 | 43% | 25% | 206 | 13.0 | 7.6 |
| 2007/2008 | 291 | 100.0% | 3.25 | 45% | 31% | 211 | 12.7 | 8.1 |
| 2006/2007 | 262 | 100.0% | 3.19 | 45% | 24% | 205 | 13.0 | 7.7 |
| 2005/2006 | 280 | 100.0% | 3.25 | 46% | 29% | 204 | 12.8 | 8.2 |
| 2004/2005 | 259 | 100.0% | 3.24 | 45% | 29% | 203 | 12.8 | 8.4 |
| 2003/2004 | 253 | 100.0% | 3.22 | 47% | 28% | 204 | 13.1 | 7.7 |
| 2002/2003 | 226 | 100.0% | 3.17 | 43% | 24% | 205 | 13.4 | 8.0 |
| 2001/2002 | 244 | 100.0% | 3.16 | 43% | 22% | 203 | 13.7 | 8.3 |
| 2000/2001 | 273 | 100.0% | 3.14 | 48% | 19% | 202 | 13.6 | 7.6 |

The majority (60%) of students earning a bachelor's degree in humanities were female.

Muir College awarded the largest number of humanities degrees followed by Roosevelt College.

Approximately, 79% of humanities majors graduated with a GPA of 'B' or higher; the mean GPA was 3.30, respectively.



Profile of Bachelor Degree Recipients Majoring in Engineering: 2010/2011

The majority (77%) of engineering degrees were awarded to males.

Warren College continues to award the largest proportion (31%) of bachelor's degrees in engineering.

Approximately, 62% of engineering majors graduated with a GPA of 'B' or higher; the average GPA for graduating engineering students was 3.13, respectively.

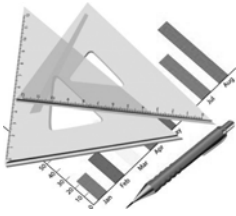
| Student Characteristics | N | | Academic Profile | | | | Time-to-Degree | |
|--|-----|--------|------------------|-----------------|-------------|------------|----------------|--------------------|
| | N | % | GPA Mean | % GPA 3.0 - 3.5 | % GPA ≥ 3.5 | Units Mean | Freshmen Mean | C.C. Transfer Mean |
| Gender | | | | | | | | |
| Female | 191 | 23.3% | 3.18 | 47.1% | 21.5% | 239 | 13.6 | 9.1 |
| Male | 627 | 76.7% | 3.11 | 38.8% | 20.6% | 235 | 13.6 | 9.9 |
| Ethnicity | | | | | | | | |
| African Am. | 10 | 1.2% | 2.83 | 10.0% | 10.0% | 227 | 16.3 | 11.0 |
| Asian | 287 | 35.1% | 3.03 | 42.2% | 9.8% | 232 | 13.6 | 9.8 |
| Mexican Am. | 56 | 6.8% | 2.97 | 41.1% | 7.1% | 240 | 15.2 | 10.7 |
| Filipino | 37 | 4.5% | 2.88 | 29.7% | 5.4% | 228 | 13.5 | 11.0 |
| Latino | 16 | 2.0% | 2.98 | 31.3% | 18.8% | 233 | 13.6 | 10.0 |
| Native Am. | 5 | 0.6% | 2.88 | 20.0% | 20.0% | 238 | 15.3 | 12.5 |
| Caucasian | 190 | 23.2% | 3.18 | 44.2% | 23.2% | 235 | 14.0 | 9.1 |
| Other | 217 | 26.5% | 3.33 | 40.1% | 40.1% | 243 | 13.0 | 9.5 |
| College | | | | | | | | |
| Revelle | 127 | 15.5% | 3.13 | 35.4% | 22.8% | 242 | 13.7 | 10.0 |
| Muir | 120 | 14.7% | 3.21 | 45.0% | 25.0% | 237 | 13.8 | 10.5 |
| Marshall | 112 | 13.7% | 3.13 | 42.0% | 19.6% | 236 | 13.7 | 9.7 |
| Warren | 256 | 31.3% | 3.10 | 36.7% | 20.7% | 229 | 13.3 | 9.7 |
| Roosevelt | 59 | 7.2% | 3.16 | 47.5% | 20.3% | 247 | 13.6 | 8.9 |
| Sixth | 144 | 17.6% | 3.09 | 45.1% | 16.7% | 237 | 13.7 | 9.4 |
| School Type | | | | | | | | |
| High School | 567 | 69.3% | 3.16 | 39.9% | 22.9% | 237 | 13.6 | -- |
| 2yr College | 243 | 29.7% | 3.07 | 42.0% | 16.0% | 235 | -- | 9.7 |
| 4yr College/Univ. | 7 | 0.9% | 3.10 | 57.1% | 14.3% | 242 | -- | -- |
| Unknown | 1 | 0.1% | 3.14 | 100.0% | 0.0% | 213 | -- | -- |
| First Generation College Status | | | | | | | | |
| First Generation | 215 | 26.3% | 3.02 | 39.1% | 12.1% | 233 | 14.0 | 9.8 |
| Not First Generation | 603 | 73.7% | 3.17 | 41.3% | 23.9% | 237 | 13.5 | 9.7 |
| Income | | | | | | | | |
| High: > \$98,401 | 159 | 19.4% | 3.19 | 49.7% | 22.0% | 237 | 13.4 | 10.1 |
| Medium High: \$65,601 - \$98,400 | 91 | 11.1% | 3.11 | 36.3% | 20.9% | 234 | 13.8 | 10.4 |
| Medium Low: \$32,801 - \$65,600 | 160 | 19.6% | 3.08 | 43.1% | 13.8% | 236 | 13.5 | 9.5 |
| Low: < \$32,800 | 157 | 19.2% | 2.99 | 36.3% | 11.5% | 233 | 14.1 | 10.0 |
| Missing/Undeclared | 251 | 30.7% | 3.22 | 37.8% | 30.3% | 238 | 13.4 | 9.4 |
| Total Engineering | 818 | 100.0% | 3.13 | 40.7% | 20.8% | 236 | 13.6 | 9.7 |

* Five or fewer cases.

Bachelor Degrees in Engineering: Trends Profile - 2000/2001 to 2009/2010

| Student Characteristics | N | | Academic Profile | | | | Time-to-Degree | |
|-------------------------|-----|--------|------------------|-----------------|-------------|------------|----------------|--------------------|
| | N | % | GPA Mean | % GPA 3.0 - 3.5 | % GPA ≥ 3.5 | Units Mean | Freshmen Mean | C.C. Transfer Mean |
| Award Year | | | | | | | | |
| 2009/2010 | 756 | 100.0% | 3.18 | 41% | 26% | 236 | 13.4 | 10.3 |
| 2008/2009 | 747 | 100.0% | 3.11 | 40% | 21% | 236 | 13.8 | 10.2 |
| 2007/2008 | 763 | 100.0% | 3.12 | 40% | 20% | 235 | 13.7 | 10.2 |
| 2006/2007 | 814 | 100.0% | 3.11 | 38% | 21% | 234 | 13.9 | 9.7 |
| 2005/2006 | 933 | 100.0% | 3.11 | 38% | 20% | 232 | 13.7 | 9.6 |
| 2004/2005 | 998 | 100.0% | 3.14 | 41% | 22% | 230 | 13.4 | 9.3 |
| 2003/2004 | 654 | 100.0% | 3.10 | 40% | 19% | 228 | 13.9 | 10.0 |
| 2002/2003 | 674 | 100.0% | 3.11 | 38% | 21% | 227 | 13.9 | 9.8 |
| 2001/2002 | 563 | 100.0% | 3.08 | 42% | 16% | 225 | 13.9 | 9.8 |
| 2000/2001 | 540 | 100.0% | 3.10 | 43% | 18% | 224 | 13.8 | 9.6 |

Profile of Bachelor Degree Recipients Majoring in Science and Math: 2010/2011



| Student Characteristics | N | | Academic Profile | | | | Time-to-Degree | |
|--|------------|---------------|------------------|-----------------|--------------|------------|----------------|--------------------|
| | N | % | GPA Mean | % GPA 3.0 - 3.5 | % GPA ≥ 3.5 | Units Mean | Freshmen Mean | C.C. Transfer Mean |
| Gender | | | | | | | | |
| Female | 178 | 43.1% | 3.12 | 37.6% | 25.3% | 225 | 13.1 | 8.2 |
| Male | 235 | 56.9% | 3.09 | 39.6% | 20.9% | 226 | 13.6 | 9.1 |
| Ethnicity | | | | | | | | |
| African Am. | 6 | 1.5% | 2.45 | 0.0% | 0.0% | 205 | 16.0 | 10.0 |
| Asian | 151 | 36.6% | 3.04 | 37.7% | 17.9% | 224 | 13.1 | 9.4 |
| Mexican Am. | 21 | 5.1% | 2.93 | 28.6% | 14.3% | 226 | 14.5 | 7.8 |
| Filipino | 17 | 4.1% | 2.77 | 35.3% | 0.0% | 219 | 13.7 | 8.3 |
| Latino | 8 | 1.9% | 3.13 | 37.5% | 25.0% | 220 | 13.8 | 9.7 |
| Native Am. | 2 | 0.5% | 2.81 | 0.0% | 0.0% | 195 | 12.0 | 6.0 |
| Caucasian | 83 | 20.1% | 3.19 | 42.2% | 27.7% | 229 | 13.6 | 9.0 |
| Other | 125 | 30.3% | 3.23 | 42.4% | 31.2% | 228 | 13.3 | 8.2 |
| College | | | | | | | | |
| Revelle | 101 | 24.5% | 3.13 | 44.6% | 20.8% | 229 | 13.3 | 8.6 |
| Muir | 76 | 18.4% | 3.16 | 42.1% | 26.3% | 227 | 13.3 | 8.5 |
| Marshall | 57 | 13.8% | 3.06 | 33.3% | 22.8% | 219 | 13.0 | 9.4 |
| Warren | 85 | 20.6% | 3.08 | 28.2% | 25.9% | 221 | 13.4 | 8.3 |
| Roosevelt | 37 | 9.0% | 2.97 | 29.7% | 16.2% | 226 | 13.8 | 9.7 |
| Sixth | 57 | 13.8% | 3.13 | 50.9% | 21.1% | 231 | 13.6 | 8.6 |
| School Type | | | | | | | | |
| High School | 281 | 68.0% | 3.16 | 44.8% | 22.8% | 230 | 13.4 | -- |
| 2yr College | 131 | 31.7% | 2.99 | 26.0% | 22.9% | 216 | -- | 8.8 |
| 4yr College/Univ. | 1 | 0.2% | 2.72 | 0.0% | 0.0% | 247 | -- | -- |
| Unknown | 0 | 0.0% | -- | -- | -- | -- | -- | -- |
| First Generation College Status | | | | | | | | |
| First Generation | 128 | 31.0% | 3.04 | 37.5% | 18.8% | 224 | 13.4 | 8.5 |
| Not First Generation | 285 | 69.0% | 3.13 | 39.3% | 24.6% | 227 | 13.3 | 8.9 |
| Income | | | | | | | | |
| High: > \$98,401 | 91 | 22.0% | 3.19 | 35.2% | 31.9% | 228 | 13.6 | 8.1 |
| Medium High: \$65,601 - \$98,400 | 53 | 12.8% | 3.09 | 41.5% | 17.0% | 224 | 13.4 | 9.1 |
| Medium Low: \$32,801 - \$65,600 | 79 | 19.1% | 3.07 | 39.2% | 19.0% | 228 | 13.3 | 10.0 |
| Low: < \$32,800 | 93 | 22.5% | 3.05 | 44.1% | 15.1% | 226 | 13.4 | 9.1 |
| Missing/Undeclared | 97 | 23.5% | 3.10 | 35.1% | 27.8% | 222 | 13.0 | 8.3 |
| Total Science/Math | 413 | 100.0% | 3.10 | 38.7% | 22.8% | 226 | 13.4 | 8.8 |

The majority of science/math degrees were awarded to males (57%).

The largest proportion of science/math degrees were awarded by Revelle College (25%) followed closely by Warren College (21%).

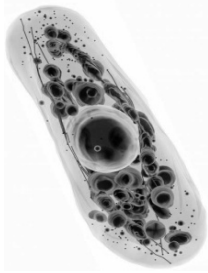
Approximately, 62% of science/math majors graduated with a GPA of 'B' or higher; twenty-three percent graduated with a GPA of 'B+' or higher.

* Five or fewer cases.

Bachelor Degrees in Science and Math: Trends Profile - 2000/2001 to 2009/2010

| Student Characteristics | N | | Academic Profile | | | | Time-to-Degree | |
|-------------------------|-----|--------|------------------|-----------------|-------------|------------|----------------|--------------------|
| | N | % | GPA Mean | % GPA 3.0 - 3.5 | % GPA ≥ 3.5 | Units Mean | Freshmen Mean | C.C. Transfer Mean |
| Award Year | | | | | | | | |
| 2009/2010 | 368 | 100.0% | 3.17 | 39% | 26% | 220 | 12.9 | 8.5 |
| 2008/2009 | 395 | 100.0% | 3.10 | 41% | 20% | 219 | 13.6 | 8.2 |
| 2007/2008 | 360 | 100.0% | 3.10 | 38% | 24% | 219 | 13.4 | 8.5 |
| 2006/2007 | 339 | 100.0% | 3.07 | 40% | 20% | 217 | 13.3 | 8.4 |
| 2005/2006 | 310 | 100.0% | 3.15 | 41% | 24% | 218 | 13.1 | 8.4 |
| 2004/2005 | 327 | 100.0% | 3.10 | 36% | 24% | 220 | 13.5 | 8.7 |
| 2003/2004 | 259 | 100.0% | 3.08 | 37% | 22% | 216 | 13.5 | 8.4 |
| 2002/2003 | 252 | 100.0% | 3.08 | 33% | 23% | 214 | 13.4 | 8.4 |
| 2001/2002 | 242 | 100.0% | 3.08 | 38% | 21% | 215 | 13.2 | 9.6 |
| 2000/2001 | 203 | 100.0% | 3.09 | 34% | 24% | 216 | 13.4 | 9.3 |

Profile of Bachelor Degree Recipients Majoring in Biology: 2010/2011



| Student Characteristics | N | | Academic Profile | | | | Time-to-Degree | |
|--|-------|--------|------------------|-----------------|-------------|------------|----------------|--------------------|
| | | | GPA Mean | % GPA 3.0 - 3.5 | % GPA ≥ 3.5 | Units Mean | Freshmen Mean | C.C. Transfer Mean |
| Gender | | | | | | | | |
| Female | 855 | 57.7% | 3.14 | 41.3% | 22.1% | 219 | 12.7 | 8.5 |
| Male | 628 | 42.3% | 3.18 | 41.2% | 25.8% | 217 | 13.0 | 8.3 |
| Ethnicity | | | | | | | | |
| African Am. | 20 | 1.3% | 2.97 | 50.0% | 0.0% | 212 | 14.3 | 8.3 |
| Asian | 648 | 43.7% | 3.08 | 38.7% | 18.7% | 219 | 13.0 | 8.5 |
| Mexican Am. | 82 | 5.5% | 2.90 | 41.5% | 4.9% | 211 | 13.8 | 8.3 |
| Filipino | 62 | 4.2% | 3.07 | 46.8% | 14.5% | 216 | 12.9 | 8.6 |
| Latino | 27 | 1.8% | 3.06 | 48.1% | 14.8% | 215 | 12.7 | 9.5 |
| Native Am. | 4 | 0.3% | 3.08 | 50.0% | 0.0% | 222 | 14.0 | 10.0 |
| Caucasian | 282 | 19.0% | 3.14 | 46.1% | 18.8% | 213 | 12.7 | 8.3 |
| Other | 358 | 24.1% | 3.40 | 39.9% | 44.7% | 223 | 12.4 | 8.1 |
| College | | | | | | | | |
| Revelle | 366 | 24.7% | 3.15 | 42.9% | 21.6% | 218 | 12.8 | 8.8 |
| Muir | 270 | 18.2% | 3.20 | 38.1% | 29.6% | 220 | 12.8 | 8.1 |
| Marshall | 226 | 15.2% | 3.15 | 42.0% | 24.8% | 210 | 12.6 | 7.9 |
| Warren | 266 | 17.9% | 3.17 | 37.6% | 27.1% | 220 | 13.0 | 8.3 |
| Roosevelt | 175 | 11.8% | 3.09 | 40.0% | 19.4% | 224 | 13.1 | 9.5 |
| Sixth | 180 | 12.1% | 3.14 | 48.3% | 16.7% | 217 | 12.9 | 8.0 |
| School Type | | | | | | | | |
| High School | 1,105 | 74.5% | 3.21 | 42.9% | 26.5% | 220 | 12.9 | -- |
| 2yr College | 352 | 23.7% | 3.00 | 36.4% | 15.9% | 210 | -- | 8.4 |
| 4yr College/Univ. | 22 | 1.5% | 3.05 | 45.5% | 9.1% | 229 | -- | -- |
| Unknown | 4 | 0.3% | 2.69 | 0.0% | 0.0% | 219 | -- | -- |
| First Generation College Status | | | | | | | | |
| First Generation | 403 | 27.2% | 3.05 | 39.0% | 14.6% | 214 | 13.1 | 8.0 |
| Not First Generation | 1,080 | 72.8% | 3.20 | 42.1% | 27.0% | 220 | 12.8 | 8.6 |
| Income | | | | | | | | |
| High: > \$98,401 | 346 | 23.3% | 3.28 | 40.2% | 34.7% | 218 | 12.5 | 8.5 |
| Medium High: \$65,601 - \$98,400 | 194 | 13.1% | 3.13 | 38.7% | 24.7% | 220 | 12.9 | 8.5 |
| Medium Low: \$32,801 - \$65,600 | 290 | 19.6% | 3.10 | 40.0% | 19.0% | 216 | 13.0 | 8.0 |
| Low: < \$32,800 | 296 | 20.0% | 3.04 | 36.8% | 15.9% | 218 | 13.4 | 8.6 |
| Missing/Undeclared | 357 | 24.1% | 3.19 | 48.5% | 22.7% | 218 | 12.7 | 8.4 |
| Total Biology | 1,483 | 100.0% | 3.15 | 41.3% | 23.7% | 218 | 12.9 | 8.4 |

* Five or fewer cases.

Bachelor Degrees in Biology: Trends Profile - 2000/2001 to 2009/2010

| Student Characteristics | N | | Academic Profile | | | | Time-to-Degree | |
|-------------------------|-------|--------|------------------|-----------------|-------------|------------|----------------|--------------------|
| | | | GPA Mean | % GPA 3.0 - 3.5 | % GPA ≥ 3.5 | Units Mean | Freshmen Mean | C.C. Transfer Mean |
| Award Year | | | | | | | | |
| 2009/2010 | 1,268 | 100.0% | 3.17 | 42% | 25% | 218 | 12.8 | 8.3 |
| 2008/2009 | 1,173 | 100.0% | 3.13 | 40% | 23% | 215 | 12.9 | 7.9 |
| 2007/2008 | 1,113 | 100.0% | 3.15 | 39% | 24% | 215 | 12.8 | 7.9 |
| 2006/2007 | 939 | 100.0% | 3.17 | 38% | 27% | 215 | 12.8 | 8.1 |
| 2005/2006 | 906 | 100.0% | 3.17 | 37% | 27% | 214 | 12.9 | 8.0 |
| 2004/2005 | 752 | 100.0% | 3.14 | 39% | 25% | 213 | 12.9 | 8.6 |
| 2003/2004 | 661 | 100.0% | 3.12 | 35% | 25% | 213 | 13.2 | 8.6 |
| 2002/2003 | 742 | 100.0% | 3.13 | 39% | 24% | 211 | 13.2 | 8.6 |
| 2001/2002 | 715 | 100.0% | 3.11 | 40% | 22% | 210 | 13.3 | 8.9 |
| 2000/2001 | 826 | 100.0% | 3.10 | 37% | 23% | 210 | 13.1 | 9.1 |

The majority of biology degrees were awarded to females (58%).

Revelle College awarded the largest proportion (25%) of biology degrees.

Approximately, 65% of biology majors graduated with a GPA of 'B' or higher; twenty-four percent graduated with a GPA of 'B+' or higher.

Profile of Bachelor Degree Recipients Majoring in the Social Sciences: 2010/2011



The majority of social science degree recipients were female (59%).

The average grade point average for the 2010/2011 social science degree recipients was 3.12.

Approximately, 62% of social science majors graduated with a GPA of 3.0 or higher; twenty-one percent graduated with a GPA of 3.5 or higher.

| Student Characteristics | N | % | Academic Profile | | | | Time-to-Degree | |
|--|-------|--------|------------------|-----------------|-------------|------------|----------------|--------------------|
| | | | GPA Mean | % GPA 3.0 - 3.5 | % GPA ≥ 3.5 | Units Mean | Freshmen Mean | C.C. Transfer Mean |
| Gender | | | | | | | | |
| Female | 1,722 | 59.3% | 3.16 | 41.8% | 24.2% | 205 | 12.6 | 6.9 |
| Male | 1,184 | 40.7% | 3.06 | 39.4% | 17.2% | 201 | 13.1 | 7.4 |
| Ethnicity | | | | | | | | |
| African Am. | 38 | 1.3% | 3.05 | 50.0% | 10.5% | 195 | 13.5 | 6.5 |
| Asian | 1,208 | 41.6% | 3.07 | 38.2% | 18.7% | 204 | 12.8 | 7.1 |
| Mexican Am. | 293 | 10.1% | 3.03 | 38.2% | 15.0% | 201 | 13.2 | 7.1 |
| Filipino | 105 | 3.6% | 3.04 | 40.0% | 14.3% | 205 | 12.9 | 7.7 |
| Latino | 104 | 3.6% | 3.10 | 39.4% | 18.3% | 203 | 13.0 | 7.6 |
| Native Am. | 16 | 0.6% | 3.16 | 50.0% | 12.5% | 195 | 13.5 | 6.3 |
| Caucasian | 789 | 27.2% | 3.23 | 44.9% | 27.6% | 201 | 12.6 | 7.1 |
| Other | 353 | 12.1% | 3.19 | 41.9% | 26.3% | 208 | 12.7 | 7.3 |
| College | | | | | | | | |
| Revelle | 247 | 8.5% | 3.02 | 39.7% | 14.6% | 213 | 13.3 | 8.5 |
| Muir | 548 | 18.9% | 3.15 | 38.0% | 25.4% | 204 | 12.8 | 7.3 |
| Marshall | 635 | 21.9% | 3.13 | 40.3% | 21.1% | 200 | 12.9 | 7.2 |
| Warren | 467 | 16.1% | 3.14 | 40.9% | 23.6% | 201 | 12.6 | 6.8 |
| Roosevelt | 585 | 20.1% | 3.15 | 39.5% | 24.8% | 206 | 12.6 | 7.2 |
| Sixth | 424 | 14.6% | 3.09 | 47.6% | 13.4% | 200 | 12.8 | 6.7 |
| School Type | | | | | | | | |
| High School | 1,729 | 59.5% | 3.17 | 43.0% | 24.1% | 208 | 12.8 | -- |
| 2yr College | 1,106 | 38.1% | 3.05 | 36.9% | 17.1% | 196 | -- | 7.1 |
| 4yr College/Univ. | 67 | 2.3% | 3.22 | 49.3% | 23.9% | 206 | -- | -- |
| Unknown | 4 | 0.1% | 2.99 | 50.0% | 0.0% | 196 | -- | -- |
| First Generation College Status | | | | | | | | |
| First Generation | 895 | 30.8% | 3.05 | 39.4% | 15.8% | 203 | 13.0 | 7.2 |
| Not First Generation | 2,011 | 69.2% | 3.16 | 41.4% | 23.9% | 203 | 12.7 | 7.1 |
| Income | | | | | | | | |
| High: > \$98,401 | 651 | 22.4% | 3.19 | 42.4% | 26.0% | 202 | 12.4 | 6.7 |
| Medium High: \$65,601 - \$98,400 | 296 | 10.2% | 3.13 | 39.9% | 23.0% | 201 | 12.6 | 7.3 |
| Medium Low: \$32,801 - \$65,600 | 555 | 19.1% | 3.08 | 45.2% | 16.0% | 205 | 13.0 | 7.2 |
| Low: < \$32,800 | 618 | 21.3% | 3.02 | 36.7% | 14.6% | 204 | 13.2 | 7.6 |
| Missing/Undeclared | 786 | 27.0% | 3.18 | 39.9% | 26.1% | 203 | 12.5 | 7.1 |
| Total Social Sciences | 2,906 | 100.0% | 3.12 | 40.8% | 21.4% | 203 | 12.8 | 7.1 |

* Five or fewer cases.

Bachelor Degrees in Social Sciences: Trends Profile - 2000/2001 to 2009/2010

| Student Characteristics | N | % | Academic Profile | | | | Time-to-Degree | |
|-------------------------|-------|--------|------------------|-----------------|-------------|------------|----------------|--------------------|
| | | | GPA Mean | % GPA 3.0 - 3.5 | % GPA ≥ 3.5 | Units Mean | Freshmen Mean | C.C. Transfer Mean |
| Award Year | | | | | | | | |
| 2009/2010 | 2,816 | 100.0% | 3.11 | 40% | 22% | 203 | 12.6 | 7.4 |
| 2008/2009 | 2,499 | 100.0% | 3.10 | 40% | 21% | 202 | 12.8 | 7.2 |
| 2007/2008 | 2,577 | 100.0% | 3.12 | 43% | 20% | 201 | 12.7 | 7.5 |
| 2006/2007 | 2,446 | 100.0% | 3.12 | 42% | 21% | 201 | 12.8 | 7.0 |
| 2005/2006 | 2,486 | 100.0% | 3.15 | 42% | 22% | 200 | 12.6 | 7.3 |
| 2004/2005 | 2,406 | 100.0% | 3.12 | 43% | 20% | 199 | 12.8 | 7.1 |
| 2003/2004 | 2,022 | 100.0% | 3.14 | 42% | 22% | 199 | 13.0 | 7.3 |
| 2002/2003 | 2,051 | 100.0% | 3.10 | 42% | 19% | 198 | 13.0 | 7.5 |
| 2001/2002 | 1,916 | 100.0% | 3.09 | 45% | 17% | 197 | 13.0 | 7.7 |
| 2000/2001 | 1,649 | 100.0% | 3.11 | 44% | 18% | 197 | 12.8 | 7.8 |



Degrees Conferred is an annual publication of the
Office of Student Research & Information,
Student Affairs, 858-534-2382.
This document is also available on the
World Wide Web at:
studentresearch.ucsd.edu