

# **Degrees Conferred**

Profile of Degree Recipients

# 2013 - 2014



**University of California, San Diego**  
**Office of Student Research & Information**  
**Student Affairs**  
**[studentresearch.ucsd.edu](http://studentresearch.ucsd.edu)**

# **DEGREES CONFERRED**

## **Profile of Degree Recipients**

**2013- 2014**

**University of California, San Diego**

**William B. Armstrong, Ph.D.**  
Director

**Heidi M. Carty, Ph.D.**  
Principal Research Analyst

**Greg Martin**  
Programmer Analyst

**Jason R. Thornton**  
Research Analyst

**Student Research & Information**  
**Student Affairs**  
**University of California, San Diego**  
**La Jolla, CA 92093-0088**  
**<http://studentresearch.ucsd.edu>**

# Highlights

---

- 8,133 students graduated from UCSD in 2013/2014. A record high (N=1,214) number of Master's degrees were awarded in 2013/2014.
- The majority (52%) of undergraduate and graduate Pharmaceutical degrees (78%) were awarded to females, while the majority of Master's degrees (61%) and Ph.D.s (62%) were awarded to males.
- UCSD awarded 6,001 undergraduate degrees in 2013/2014. Of these, the largest percentage (48%; 2,873) were granted to social science majors, followed by engineering (18%; 1,063) and biology (18%; 1,060) majors.
- Approximately, 60% of the undergraduate degrees awarded in 2013/2014 were earned by students of color.
- More than one-half (55%) of all first-time freshmen who earned a Bachelor's degree at UCSD did so in four years; almost three-quarters (74%) graduated within 13 quarters or just over four years.
- On average, transfer students took 2.7 years to complete their Bachelor degree requirements at UCSD, over three-quarters (78%) graduated within nine quarters.
- Approximately 65% of the 2013/2014 undergraduate degree recipients graduated with a grade point average of 3.0 ('B') or higher; approximately one in four (26%) graduated with a grade point average of 3.5 ('B+') or higher.
- The average GPA for all undergraduate degree recipients in 2013/2014 was 3.16. The average GPA for the 2013/2014 first-time freshmen graduates was 3.20. The average GPA for the 2013/2014 transfer students was 3.10.

# All Degree Types

## 2013 / 2014

**UC San Diego Awarded a Total of 8,133  
Undergraduate, Graduate and Medical Degrees  
During the 2013/2014 Academic Year.**

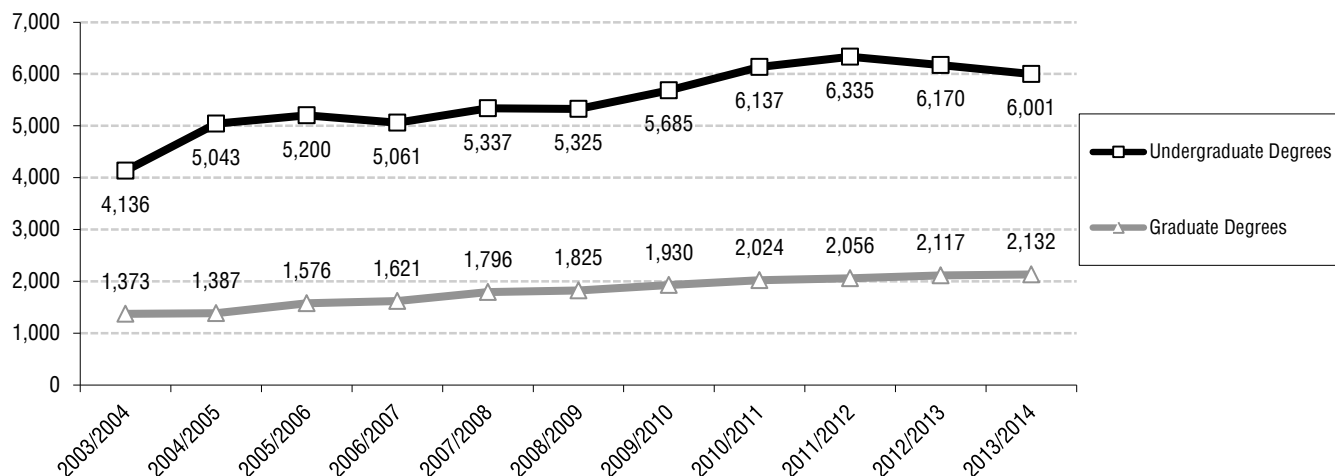
## Degrees by the Numbers

Award Year	Bachelor	Master	Candidate in Phil.	Doctor of Philosophy	Doctor of Medicine	Doctor of Pharmacy	Total
2013/2014	6,001	1,214	243	500	120	55	8,133
2012/2013	6,170	1,198	236	494	130	59	8,287
2011/2012	6,335	1,106	233	528	125	64	8,391
2010/2011	6,137	1,071	276	491	129	57	8,161
2009/2010	5,685	1,033	262	459	122	54	7,615
2008/2009	5,325	990	234	437	109	55	7,150
2007/2008	5,337	894	258	488	125	31	7,133
2006/2007	5,061	901	185	387	101	47	6,682
2005/2006	5,200	761	253	354	186	22	6,776
2004/2005	5,043	797	170	303	117	--	6,430
2003/2004	4,136	785	161	327	100	--	5,509



8,133 students graduated from UCSD in 2013/2014. A record high (N=1,214) number of Master's degrees were awarded in 2013/2014.

**Trends in Degrees Awarded**





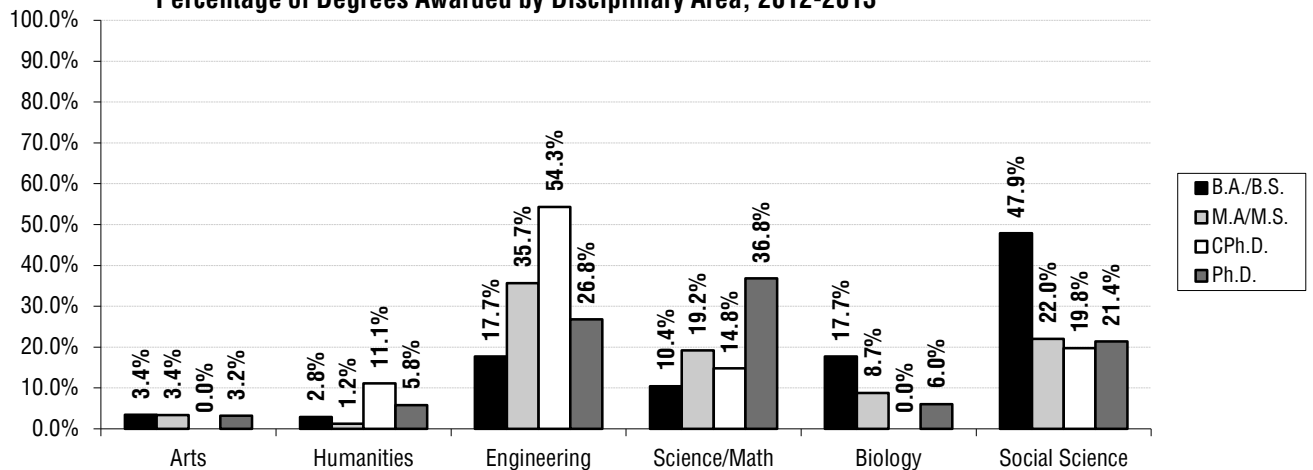
# Student Characteristics: All Degree Types 2013/2014

The majority (52%) of Bachelor's degrees were awarded to females.

Almost one-half (48%) of all Bachelor's degrees were awarded to social science majors. Just over one-third (36%) of all Master's degrees were awarded to engineering majors. The largest number (37%) of degree recipients earning a Ph.D. were science/math majors.

Background Characteristics	B.A./B.S. N=6,001		M.A/M.S. N=1,214		CPh.D. N=243		Ph.D. N=500		M.D. N=120		Pharm. N=55		Total N=8,133	
	N	%	N	%	N	%	N	%	N	%	N	%	N	%
<b>Gender</b>														
Female	3,123	52.0%	473	39.0%	61	25.1%	190	38.0%	58	48.3%	43	78.2%	3,948	48.5%
Male	2,878	48.0%	741	61.0%	182	74.9%	310	62.0%	62	51.7%	12	21.8%	4,185	51.5%
<b>Ethnicity</b>														
African Am.	108	1.8%	3	0.2%	0	0.0%	12	2.4%	5	4.2%	0	0.0%	128	1.6%
Asian	2,488	41.5%	12	1.0%	21	8.6%	38	7.6%	31	25.8%	5	9.1%	2,595	31.9%
Mexican Am.	573	9.5%	7	0.6%	7	2.9%	18	3.6%	5	4.2%	0	0.0%	610	7.5%
Filipino	235	3.9%	2	0.2%	0	0.0%	7	1.4%	0	0.0%	1	1.8%	245	3.0%
Latino	199	3.3%	5	0.4%	7	2.9%	11	2.2%	2	1.7%	0	0.0%	224	2.8%
Native Am.	25	0.4%	0	0.0%	1	0.4%	2	0.4%	1	0.8%	0	0.0%	29	0.4%
Caucasian	1,296	21.6%	58	4.8%	76	31.3%	237	47.4%	44	36.7%	1	1.8%	1,712	21.1%
Other	1,077	17.9%	1,127	92.8%	131	53.9%	175	35.0%	32	26.7%	48	87.3%	2,590	31.8%
<b>Disciplinary Area</b>														
Arts	206	3.4%	41	3.4%	0	0.0%	16	3.2%	0	0.0%	0	0.0%	263	3.2%
Humanities	170	2.8%	15	1.2%	27	11.1%	29	5.8%	0	0.0%	0	0.0%	241	3.0%
Engineering	1,063	17.7%	433	35.7%	132	54.3%	134	26.8%	0	0.0%	0	0.0%	1,762	21.7%
Science/Math	626	10.4%	233	19.2%	36	14.8%	184	36.8%	120	100.0%	55	100.0%	1,254	15.4%
Biology	1,060	17.7%	106	8.7%	0	0.0%	30	6.0%	0	0.0%	0	0.0%	1,196	14.7%
Social Science	2,873	47.9%	267	22.0%	48	19.8%	107	21.4%	0	0.0%	0	0.0%	3,295	40.5%
Dbl/Special	3	0.0%	6	0.5%	0	0.0%	0	0.0%	0	0.0%	0	0.0%	9	0.1%
Management	0	0.0%	113	9.3%	0	0.0%	0	0.0%	0	0.0%	0	0.0%	113	1.4%
<b>College</b>														
Revelle	919	15.3%	NA	NA	NA	NA	NA	NA	NA	NA	NA	NA	NA	NA
John Muir	1,011	16.8%	NA	NA	NA	NA	NA	NA	NA	NA	NA	NA	NA	NA
Thurgood Marshall	1,118	18.6%	NA	NA	NA	NA	NA	NA	NA	NA	NA	NA	NA	NA
Earl Warren	1,032	17.2%	NA	NA	NA	NA	NA	NA	NA	NA	NA	NA	NA	NA
Eleanor Roosevelt	975	16.2%	NA	NA	NA	NA	NA	NA	NA	NA	NA	NA	NA	NA
Sixth	946	15.8%	NA	NA	NA	NA	NA	NA	NA	NA	NA	NA	NA	NA

Percentage of Degrees Awarded by Disciplinary Area, 2012-2013

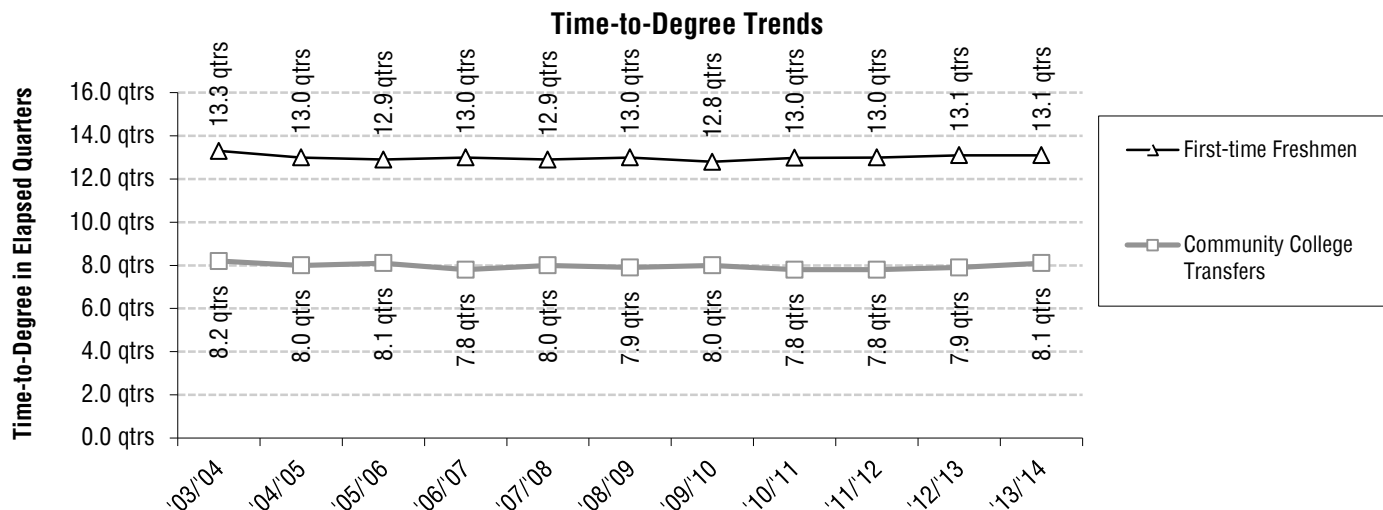


# Bachelor Degrees

## Trends in Time-to-Degree<sup>1</sup>: Academic Performance

Academic Performance	Award Year										
	'03/'04	'04/'05	'05/'06	'06/'07	'07/'08	'08/'09	'09/'10	'10/'11	'11/'12	'12/'13	'13/'14
<b>Bachelor Degree Recipients Who Entered From High School</b>											
Average Time-to-Degree	13.3	13.0	12.9	13.0	12.9	13.0	12.8	13.0	13.0	13.1	13.1
Median Time-to-Degree	12.0	12.0	12.0	12.0	12.0	12.0	12.0	12.0	12.0	12.0	12.0
Average Units	209	210	211	213	213	213	215	217	218	220	220
GPA at Graduation	3.19	3.19	3.20	3.17	3.18	3.16	3.20	3.19	3.19	3.19	3.20
% with GPA = 3.0 - 3.5	43%	44%	43%	43%	43%	42%	44%	43%	41%	40%	41%
% with GPA $\geq$ 3.5	25%	26%	26%	25%	25%	24%	27%	26%	27%	28%	28%
<b>Bachelor Degree Recipients Who Entered From a Two-Year Community College</b>											
Average Time-to-Degree	8.2	8.0	8.1	7.8	8.0	7.9	8.0	7.8	7.8	7.9	8.1
Median Time-to-Degree	6.0	6.0	6.0	6.0	6.0	6.0	7.0	7.0	7.0	7.0	7.0
Average Units	205	206	206	205	206	207	206	206	206	207	208
GPA at Graduation	3.06	3.04	3.06	3.06	3.04	3.03	3.04	3.07	3.08	3.09	3.10
% with GPA = 3.0 - 3.5	37%	39%	36%	37%	37%	36%	34%	38%	36%	37%	37%
% with GPA $\geq$ 3.5	20%	17%	19%	19%	18%	18%	19%	20%	21%	21%	22%
<b>Total Bachelor Degree Recipients</b>											
Average Units	208	209	210	210	211	211	212	213	214	215	216
GPA at Graduation	3.15	3.14	3.16	3.14	3.14	3.12	3.15	3.15	3.15	3.15	3.16
% with GPA = 3.0 - 3.5	41%	42%	41%	41%	41%	40%	41%	41%	40%	39%	40%
% with GPA $\geq$ 3.5	23%	23%	24%	23%	23%	22%	24%	23%	24%	25%	26%

<sup>1</sup>Time-to-Degree is reported in elapsed quarters from first enrollment date to graduation. Only the records of students who enter UCSD in the Fall quarter are included in time-to-degree calculations. An academic year is defined as three quarters; twelve quarters equal four years. Summer degrees are combined with fall degrees and represent one quarter.



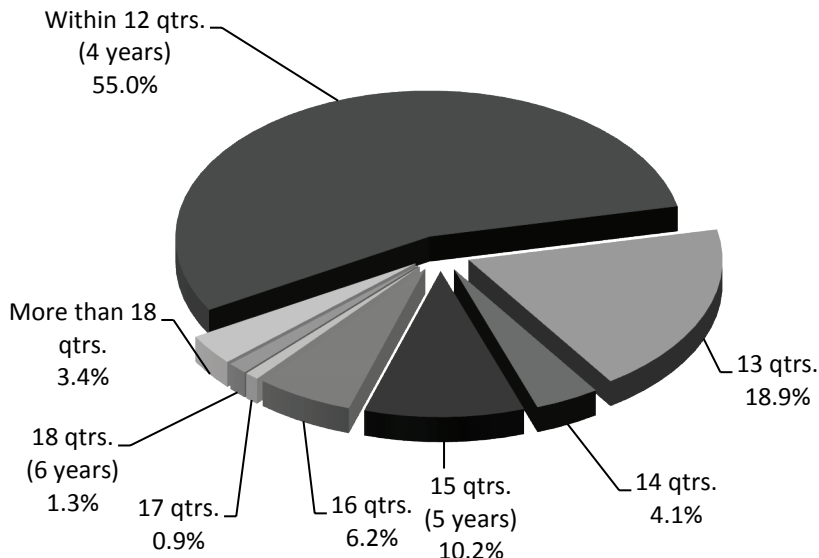
# Nominal Time-to-Degree: 2013/2014

The average first-time freshman takes 4.4 years to graduate. Fifty-five percent of first-time freshmen earning a Bachelor's degree at UCSD did so within 4 years; almost three-quarters (74%) graduated within 13 quarters or just over 4 years, 88% within 5 years, and 97% within 6 years (18 quarters).

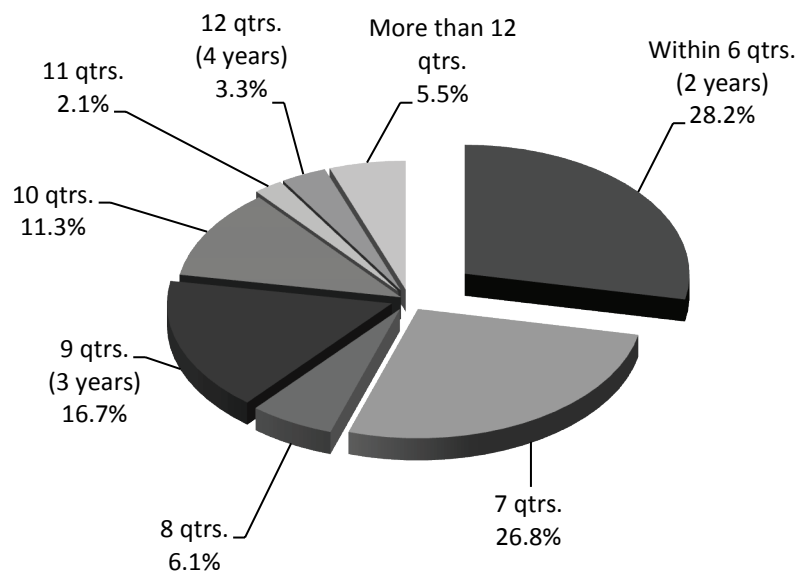
## First-Time Freshmen

### Cumulative Frequency:

55.0% graduated within 12 qtrs.  
73.9% graduated within 13 qtrs.  
78.0% graduated within 14 qtrs.  
88.2% graduated within 15 qtrs.  
94.4% graduated within 16 qtrs.  
95.3% graduated within 17 qtrs.  
96.6% graduated within 18 qtrs.



On average, transfer students took 2.7 years to complete their bachelor degree requirements at UCSD. Over three-quarters (78%) graduated within 3 years (9 quarters), and just over one-quarter (28%) graduated within 2 years (6 quarters).



## Community College Transfer

### Cumulative Frequency:

28.2% graduated within 6 qtrs.  
55.1% graduated within 7 qtrs.  
61.2% graduated within 8 qtrs.  
77.9% graduated within 9 qtrs.  
89.2% graduated within 10 qtrs.  
91.3% graduated within 11 qtrs.  
94.6% graduated within 12 qtrs.



## Characteristics of Bachelor Degree Recipients: 2013/2014

The majority of Bachelor degree recipients are women (52%).

Social science majors account for almost one-half (48%) of the undergraduate degree recipients, followed by biology and engineering majors (18%).

Approximately, 65% of the undergraduate degree recipients graduated with GPA of 3.0 ('B') or higher. Approximately, 26% graduated with a GPA of 'B+' or higher.

Student Characteristics	N	%	GPA Mean	Academic Profile % GPA		Units Mean	Time-to-Degree	
				3.0 - 3.5	% GPA ≥ 3.5		Freshmen Mean	C.C. Transfer <sup>2</sup> Mean
<b>Gender</b>								
Female	3,123	52.0%	3.20	40.2%	28.0%	214	12.9	7.7
Male	2,878	48.0%	3.12	39.2%	22.9%	218	13.4	8.5
<b>Ethnicity</b>								
African Am.	108	1.8%	3.09	41.7%	17.6%	216	13.5	8.7
Asian	2,488	41.5%	3.10	41.2%	19.8%	215	13.2	7.6
Mexican Am.	573	9.5%	3.03	36.8%	14.3%	212	13.7	8.5
Filipino	235	3.9%	3.03	35.3%	14.5%	215	13.4	8.3
Latino	199	3.3%	3.08	35.7%	22.6%	214	13.6	8.7
Native Am.	25	0.4%	3.25	56.0%	20.0%	210	11.6	8.5
Caucasian	1,296	21.6%	3.24	40.4%	31.2%	213	12.9	8.4
Other	1,077	17.9%	3.34	37.9%	42.0%	224	12.6	8.5
<b>Disciplinary Area</b>								
Arts	206	3.4%	3.42	39.8%	46.6%	213	13.7	7.8
Humanities	170	2.8%	3.30	37.6%	37.6%	211	13.3	8.5
Engineering	1,063	17.7%	3.16	43.1%	23.3%	237	13.5	9.8
Science/Math	626	10.4%	3.12	36.3%	24.1%	223	13.1	8.4
Biology	1,060	17.7%	3.22	39.4%	30.0%	221	13.0	8.8
Social Science	2,873	47.9%	3.13	39.4%	22.8%	205	12.9	7.5
DbI/Special	3	0.0%	3.50	66.7%	33.3%	202	12.0	8.0
<b>College</b>								
Revelle	919	15.3%	3.12	35.6%	23.6%	224	13.3	8.8
Muir	1,011	16.8%	3.20	39.9%	28.5%	214	12.9	8.0
Marshall	1,118	18.6%	3.15	38.7%	25.8%	209	13.1	7.7
Warren	1,032	17.2%	3.16	39.2%	25.5%	219	13.0	8.6
Roosevelt	975	16.2%	3.17	42.2%	24.5%	214	13.3	8.0
Sixth	946	15.8%	3.18	42.6%	25.3%	215	13.0	8.1
<b>School Type</b>								
High School	3,623	60.4%	3.20	41.2%	27.8%	220	13.1	--
2yr College	2,262	37.7%	3.10	37.0%	21.9%	208	--	8.1
4yr College/Univ.	108	1.8%	3.26	48.1%	29.6%	216	--	--
Unknown	8	0.1%	2.89	12.5%	12.5%	217	--	--
<b>First Generation College Status</b>								
First Generation	2,021	33.7%	3.09	38.5%	19.5%	214	13.5	8.0
Not First Generation	3,980	66.3%	3.20	40.3%	28.6%	217	12.9	8.2
<b>Income</b>								
High: > \$98,401	1,516	25.3%	3.24	41.4%	30.8%	215	12.8	7.6
Medium High: \$65,601 - \$98,400	602	10.0%	3.17	40.2%	25.4%	216	12.9	7.9
Medium Low: \$32,801 - \$65,600	1,133	18.9%	3.15	39.0%	24.4%	217	13.2	8.0
Low: < \$32,800	1,362	22.7%	3.06	39.2%	17.6%	216	13.5	8.3
Missing/Undeclared	1,388	23.1%	3.19	38.6%	28.6%	214	12.8	8.6
<b>Total Population</b>	6,001	100.0%	3.16	39.7%	25.6%	216	13.1	8.1

<sup>2</sup> For Transfer students, time-to-degree is calculated only for those students who matriculate from a two-year community college (C.C.). The typical community college transfer student enters UCSD with 90 units of transferable academic credit.

On average, first-time freshmen take just over four years (13.1 quarters) to graduate. Community College transfer students tend to graduate in approximately three years or 8.1 quarters.





## Profile of Bachelor Degree Recipients Majoring in the Arts: 2013/2014

The majority (54%) of the students graduating with a degree in arts were female.

Sixth College awarded the largest number of Bachelor's degrees in arts (37%) compared to the other five colleges.

Relative to other disciplinary areas, a larger percentage (86%) of arts majors graduated with a GPA of 'B' or higher. The average GPA for arts majors was 3.42, respectively.

Student Characteristics	N	%	Academic Profile				Time-to-Degree	
			GPA Mean	% GPA 3.0 - 3.5	% GPA ≥ 3.5	Units Mean	Freshmen Mean	C.C. Transfer Mean
<b>Gender</b>								
Female	111	53.9%	3.47	36.9%	54.1%	214	13.6	7.7
Male	95	46.1%	3.35	43.2%	37.9%	212	13.9	7.9
<b>Ethnicity</b>								
African Am.	6	2.9%	3.36	33.3%	50.0%	215	12.5	7.7
Asian	64	31.1%	3.31	45.3%	34.4%	215	13.9	7.7
Mexican Am.	20	9.7%	3.45	30.0%	50.0%	209	14.9	7.1
Filipino	12	5.8%	3.28	58.3%	25.0%	216	21.0	9.4
Latino	14	6.8%	3.32	50.0%	35.7%	211	13.0	9.2
Native Am.	1	0.5%	3.86	0.0%	100.0%	181	--	5.0
Caucasian	60	29.1%	3.53	30.0%	63.3%	214	12.3	7.5
Other	29	14.1%	3.49	44.8%	48.3%	210	13.5	7.6
<b>College</b>								
Revelle	18	8.7%	3.09	33.3%	22.2%	238	15.9	9.5
Muir	34	16.5%	3.46	32.4%	52.9%	210	13.5	7.5
Marshall	27	13.1%	3.39	29.6%	48.1%	209	14.0	7.0
Warren	25	12.1%	3.42	52.0%	44.0%	216	12.7	7.8
Roosevelt	26	12.6%	3.45	42.3%	50.0%	215	14.3	7.7
Sixth	76	36.9%	3.47	43.4%	48.7%	208	12.8	8.1
<b>School Type</b>								
High School	92	44.7%	3.33	40.2%	41.3%	220	13.7	--
2yr College	111	53.9%	3.48	39.6%	50.5%	207	--	7.8
4yr College/Univ.	3	1.5%	3.57	33.3%	66.7%	226	--	--
Unknown	0	0.0%	--	--	--	--	--	--
<b>First Generation College Status</b>								
First Generation	68	33.0%	3.41	35.3%	47.1%	210	13.8	8.1
Not First Generation	138	67.0%	3.42	42.0%	46.4%	214	13.7	7.7
<b>Income</b>								
High: > \$98,401	55	26.7%	3.42	40.0%	47.3%	213	13.6	7.4
Medium High: \$65,601 - \$98,400	23	11.2%	3.56	34.8%	60.9%	219	12.8	7.7
Medium Low: \$32,801 - \$65,600	31	15.0%	3.42	32.3%	54.8%	210	14.1	9.3
Low: < \$32,800	40	19.4%	3.25	45.0%	30.0%	214	14.1	7.8
Missing/Undeclared	57	27.7%	3.47	42.1%	47.4%	211	13.2	7.8
<b>Total Arts</b>	206	100.0%	3.42	39.8%	46.6%	213	13.7	7.8

\* Five or fewer cases.

## Bachelor Degrees in the Arts: Trends Profile - 2003/2004 to 2012/2013

Student Characteristics	N	%	Academic Profile				Time-to-Degree	
			GPA Mean	% GPA 3.0 - 3.5	% GPA ≥ 3.5	Units Mean	Freshmen Mean	C.C. Transfer Mean
<b>Award Year</b>								
2012/2013	208	100.0%	3.38	43%	41%	216	13.9	8.3
2011/2012	225	100.0%	3.34	43%	37%	214	13.1	7.9
2010/2011	256	100.0%	3.39	46%	42%	215	13.3	8.5
2009/2010	219	100.0%	3.39	48%	38%	213	13.1	8.4
2008/2009	249	100.0%	3.31	48%	34%	210	13.6	8.1
2007/2008	232	100.0%	3.35	47%	37%	213	13.8	8.5
2006/2007	257	100.0%	3.35	51%	34%	211	13.9	8.3
2005/2006	280	100.0%	3.36	49%	38%	208	13.4	8.2
2004/2005	296	100.0%	3.29	52%	30%	208	13.4	8.1
2003/2004	281	100.0%	3.34	44%	38%	211	13.8	8.0



## Profile of Bachelor Degree Recipients Majoring in the Humanities: 2013/2014

Student Characteristics	N	%	Academic Profile				Time-to-Degree	
			GPA Mean	% GPA 3.0 - 3.5	% GPA ≥ 3.5	Units Mean	Freshmen Mean	C.C. Transfer Mean
<b>Gender</b>								
Female	94	55.3%	3.37	36.2%	43.6%	216	12.9	8.0
Male	76	44.7%	3.21	39.5%	30.3%	206	13.9	8.9
<b>Ethnicity</b>								
African Am.	10	5.9%	3.05	10.0%	40.0%	204	13.0	8.7
Asian	35	20.6%	3.25	37.1%	34.3%	215	13.9	7.5
Mexican Am.	24	14.1%	3.11	45.8%	12.5%	201	13.8	7.9
Filipino	3	1.8%	3.52	66.7%	33.3%	212	--	8.3
Latino	6	3.5%	3.69	33.3%	66.7%	233	12.0	9.4
Native Am.	1	0.6%	3.05	100.0%	0.0%	192	--	15.0
Caucasian	68	40.0%	3.36	35.3%	45.6%	213	13.1	8.8
Other	23	13.5%	3.36	43.5%	39.1%	210	12.0	7.6
<b>College</b>								
Revelle	20	11.8%	3.28	35.0%	40.0%	215	14.3	10.0
Muir	34	20.0%	3.31	44.1%	32.4%	209	13.6	7.7
Marshall	38	22.4%	3.27	47.4%	31.6%	208	12.1	8.5
Warren	23	13.5%	3.27	30.4%	43.5%	213	13.6	8.4
Roosevelt	45	26.5%	3.37	31.1%	44.4%	215	13.0	7.7
Sixth	10	5.9%	3.12	30.0%	30.0%	205	13.6	11.8
<b>School Type</b>								
High School	80	47.1%	3.38	37.5%	46.2%	213	13.3	--
2yr College	80	47.1%	3.22	35.0%	30.0%	210	--	8.5
4yr College/Univ.	7	4.1%	3.41	71.4%	28.6%	211	--	--
Unknown	3	1.8%	2.98	33.3%	33.3%	197	--	--
<b>First Generation College Status</b>								
First Generation	51	30.0%	3.26	43.1%	29.4%	210	14.0	8.4
Not First Generation	119	70.0%	3.32	35.3%	41.2%	212	13.0	8.5
<b>Income</b>								
High: > \$98,401	32	18.8%	3.39	31.2%	46.9%	217	13.3	7.9
Medium High: \$65,601 - \$98,400	10	5.9%	2.93	60.0%	0.0%	218	13.5	9.3
Medium Low: \$32,801 - \$65,600	39	22.9%	3.31	35.9%	38.5%	211	13.8	7.2
Low: < \$32,800	30	17.6%	3.11	46.7%	16.7%	204	13.3	8.5
Missing/Undeclared	59	34.7%	3.40	33.9%	49.2%	212	12.4	9.0
<b>Total Humanities</b>	170	100.0%	3.30	37.6%	37.6%	211	13.3	8.5

\* Five or fewer cases.

## Bachelor Degrees in the Humanities: Trends Profile - 2003/2004 to 2012/2013

Student Characteristics	N	%	Academic Profile				Time-to-Degree	
			GPA Mean	% GPA 3.0 - 3.5	% GPA ≥ 3.5	Units Mean	Freshmen Mean	C.C. Transfer Mean
<b>Award Year</b>								
2012/2013	239	100.0%	3.25	41%	33%	209	13.7	7.9
2011/2012	292	100.0%	3.23	40%	31%	210	13.1	8.5
2010/2011	260	100.0%	3.30	48%	31%	209	12.8	7.2
2009/2010	255	100.0%	3.25	43%	29%	207	12.7	8.3
2008/2009	260	100.0%	3.19	43%	25%	206	13.0	7.6
2007/2008	291	100.0%	3.25	45%	31%	211	12.7	8.1
2006/2007	262	100.0%	3.19	45%	24%	205	13.0	7.7
2005/2006	280	100.0%	3.25	46%	29%	204	12.8	8.2
2004/2005	259	100.0%	3.24	45%	29%	203	12.8	8.4
2003/2004	253	100.0%	3.22	47%	28%	204	13.1	7.7

The majority (55%) of students earning a Bachelor's degree in humanities were female.

Roosevelt (N=45) and Marshall (N=38) awarded the largest number of humanities degrees in 2013/2014.

Almost three-quarters (75%) of humanities majors graduated with a GPA of 'B' or higher; the mean GPA was 3.30, respectively.



## Profile of Bachelor Degree Recipients Majoring in Engineering: 2013/2014

Over three-quarters (79%) of all engineering degrees were awarded to males.

Warren College continues to award the largest proportion (32%) of Bachelor's degrees in engineering.

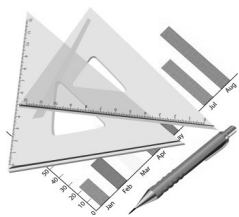
Approximately, 66% of engineering majors graduated with a GPA of 'B' or higher; the average GPA for graduating engineering students was 3.16, respectively.

Student Characteristics	N	%	Academic Profile				Time-to-Degree	
			GPA Mean	% GPA 3.0 - 3.5	% GPA ≥ 3.5	Units Mean	Freshmen Mean	C.C. Transfer Mean
<b>Gender</b>								
Female	222	20.9%	3.25	45.5%	27.9%	242	13.4	9.6
Male	841	79.1%	3.13	42.4%	22.1%	236	13.5	9.9
<b>Ethnicity</b>								
African Am.	9	0.8%	3.11	66.7%	11.1%	229	15.0	9.0
Asian	393	37.0%	3.11	46.8%	16.8%	237	13.5	9.6
Mexican Am.	80	7.5%	2.88	32.5%	7.5%	233	14.9	11.2
Filipino	50	4.7%	3.15	46.0%	16.0%	233	13.1	9.2
Latino	27	2.5%	3.01	44.4%	7.4%	236	14.0	9.8
Native Am.	4	0.4%	3.36	50.0%	25.0%	236	12.5	10.5
Caucasian	236	22.2%	3.14	41.5%	23.7%	237	14.0	10.0
Other	264	24.8%	3.34	40.5%	40.9%	240	12.9	9.6
<b>College</b>								
Revelle	169	15.9%	3.19	39.1%	27.2%	245	13.6	10.3
Muir	127	11.9%	3.16	46.5%	19.7%	236	13.7	9.7
Marshall	135	12.7%	3.18	40.0%	27.4%	238	13.4	9.8
Warren	342	32.2%	3.16	44.7%	24.6%	232	13.2	10.0
Roosevelt	110	10.3%	3.09	43.6%	16.4%	239	14.3	10.1
Sixth	180	16.9%	3.13	43.3%	21.1%	238	13.5	9.1
<b>School Type</b>								
High School	685	64.4%	3.19	43.8%	25.7%	236	13.5	--
2yr College	364	34.2%	3.09	42.0%	18.7%	238	--	9.8
4yr College/Univ.	14	1.3%	3.22	35.7%	28.6%	248	--	--
Unknown	0	0.0%	--	--	--	--	--	--
<b>First Generation College Status</b>								
First Generation	311	29.3%	3.08	43.1%	17.0%	237	13.8	9.8
Not First Generation	752	70.7%	3.19	43.1%	25.9%	237	13.4	9.8
<b>Income</b>								
High: > \$98,401	293	27.6%	3.24	44.0%	30.4%	238	13.2	9.3
Medium High: \$65,601 - \$98,400	107	10.1%	3.13	45.8%	19.6%	239	13.6	9.7
Medium Low: \$32,801 - \$65,600	188	17.7%	3.12	42.6%	19.1%	238	13.6	9.8
Low: < \$32,800	208	19.6%	3.07	42.3%	17.3%	237	13.9	9.9
Missing/Undeclared	267	25.1%	3.16	41.9%	24.7%	235	13.3	10.2
<b>Total Engineering</b>	1,063	100.0%	3.16	43.1%	23.3%	237	13.5	9.8

\* Five or fewer cases.

## Bachelor Degrees in Engineering: Trends Profile - 2003/2004 to 2012/2013

Student Characteristics	N	%	Academic Profile				Time-to-Degree	
			GPA Mean	% GPA 3.0 - 3.5	% GPA ≥ 3.5	Units Mean	Freshmen Mean	C.C. Transfer Mean
<b>Award Year</b>								
2012/2013	1,052	100.0%	3.13	41%	21%	236	13.6	9.5
2011/2012	896	100.0%	3.14	39%	23%	236	13.6	9.5
2010/2011	818	100.0%	3.13	41%	21%	236	13.6	9.7
2009/2010	756	100.0%	3.18	41%	26%	236	13.4	10.3
2008/2009	747	100.0%	3.11	40%	21%	236	13.8	10.2
2007/2008	763	100.0%	3.12	40%	20%	235	13.7	10.2
2006/2007	814	100.0%	3.11	38%	21%	234	13.9	9.7
2005/2006	933	100.0%	3.11	38%	20%	232	13.7	9.6
2004/2005	998	100.0%	3.14	41%	22%	230	13.4	9.3
2003/2004	654	100.0%	3.10	40%	19%	228	13.9	10.0



## Profile of Bachelor Degree Recipients Majoring in Science and Math: 2013/2014

The majority (53%) of students earning a Bachelor's degree in science/math were female.

Revelle College (21%) awarded the largest amount of Bachelor's degrees in science/math in 2013/2014.

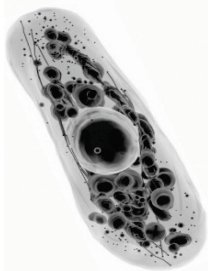
Approximately, 60% of science/math majors graduated with a GPA of 'B' or higher; twenty-six percent graduated with a GPA of 'B+' or higher.

Student Characteristics	N	%	Academic Profile				Time-to-Degree	
			GPA Mean	% GPA 3.0 - 3.5	% GPA ≥ 3.5	Units Mean	Freshmen Mean	C.C. Transfer Mean
<b>Gender</b>								
Female	332	53.0%	3.13	34.9%	25.9%	225	13.1	8.6
Male	294	47.0%	3.10	37.8%	22.1%	221	13.0	8.2
<b>Ethnicity</b>								
African Am.	6	1.0%	2.85	33.3%	0.0%	244	13.5	6.0
Asian	276	44.1%	3.11	40.2%	23.6%	222	13.2	7.7
Mexican Am.	47	7.5%	2.90	23.4%	6.4%	221	14.0	8.9
Filipino	31	5.0%	2.91	32.3%	12.9%	214	13.6	8.3
Latino	12	1.9%	2.93	8.3%	25.0%	226	14.6	9.9
Native Am.	3	0.5%	3.23	33.3%	33.3%	195	12.0	6.5
Caucasian	118	18.8%	3.13	35.6%	22.0%	220	12.6	8.5
Other	133	21.2%	3.27	36.8%	36.8%	230	12.5	9.0
<b>College</b>								
Revelle	132	21.1%	3.05	30.3%	22.0%	225	13.1	8.9
Muir	106	16.9%	3.13	41.5%	22.6%	228	13.0	8.6
Marshall	113	18.1%	3.06	31.9%	21.2%	220	13.5	8.4
Warren	100	16.0%	3.20	34.0%	31.0%	221	12.7	7.7
Roosevelt	77	12.3%	3.16	44.2%	23.4%	224	13.0	7.8
Sixth	98	15.7%	3.15	39.8%	25.5%	220	13.0	8.3
<b>School Type</b>								
High School	413	66.0%	3.19	38.3%	29.1%	227	13.1	--
2yr College	207	33.1%	2.97	32.4%	13.5%	215	--	8.4
4yr College/Univ.	5	0.8%	3.39	40.0%	60.0%	231	--	--
Unknown	1	0.2%	2.56	0.0%	0.0%	327	--	--
<b>First Generation College Status</b>								
First Generation	199	31.8%	3.02	36.7%	14.6%	223	13.5	8.8
Not First Generation	427	68.2%	3.17	36.1%	28.6%	223	12.8	8.2
<b>Income</b>								
High: > \$98,401	160	25.6%	3.22	40.0%	31.9%	220	12.9	7.7
Medium High: \$65,601 - \$98,400	72	11.5%	3.13	36.1%	26.4%	225	12.8	8.5
Medium Low: \$32,801 - \$65,600	129	20.6%	3.06	34.9%	21.7%	227	13.0	8.5
Low: < \$32,800	136	21.7%	3.00	33.1%	14.0%	226	13.6	8.7
Missing/Undeclared	129	20.6%	3.16	36.4%	26.4%	220	12.8	8.7
<b>Total Science/Math</b>	626	100.0%	3.12	36.3%	24.1%	223	13.1	8.4

\* Five or fewer cases.

## Bachelor Degrees in Science and Math: Trends Profile - 2003/2004 to 2012/2013

Student Characteristics	N	%	Academic Profile				Time-to-Degree	
			GPA Mean	% GPA 3.0 - 3.5	% GPA ≥ 3.5	Units Mean	Freshmen Mean	C.C. Transfer Mean
<b>Award Year</b>								
2012/2013	522	100.0%	3.14	36%	26%	221	12.9	8.4
2011/2012	409	100.0%	3.14	40%	23%	225	13.2	8.6
2010/2011	413	100.0%	3.10	39%	23%	226	13.4	8.8
2009/2010	368	100.0%	3.17	39%	26%	220	12.9	8.5
2008/2009	395	100.0%	3.10	41%	20%	219	13.6	8.2
2007/2008	360	100.0%	3.10	38%	24%	219	13.4	8.5
2006/2007	339	100.0%	3.07	40%	20%	217	13.3	8.4
2005/2006	310	100.0%	3.15	41%	24%	218	13.1	8.4
2004/2005	327	100.0%	3.10	36%	24%	220	13.5	8.7
2003/2004	259	100.0%	3.08	37%	22%	216	13.5	8.4



## Profile of Bachelor Degree Recipients Majoring in Biology: 2013/2014

Student Characteristics	N	%	Academic Profile				Time-to-Degree	
			GPA Mean	% GPA 3.0 - 3.5	% GPA ≥ 3.5	Units Mean	Freshmen Mean	C.C. Transfer Mean
<b>Gender</b>								
Female	616	58.1%	3.20	39.3%	29.4%	222	13.0	8.9
Male	444	41.9%	3.24	39.6%	30.9%	220	13.0	8.8
<b>Ethnicity</b>								
African Am.	22	2.1%	2.92	45.5%	4.5%	225	13.9	10.7
Asian	409	38.6%	3.15	44.3%	21.3%	223	13.2	8.5
Mexican Am.	69	6.5%	2.98	31.9%	11.6%	219	14.0	9.0
Filipino	35	3.3%	2.81	22.9%	5.7%	212	14.9	9.1
Latino	20	1.9%	3.12	25.0%	35.0%	237	15.2	10.7
Native Am.	1	0.1%	2.98	0.0%	0.0%	249	14.0	--
Caucasian	180	17.0%	3.17	45.0%	23.3%	213	12.9	9.2
Other	324	30.6%	3.45	34.3%	52.8%	224	12.4	8.0
<b>College</b>								
Revelle	255	24.1%	3.20	38.0%	29.4%	223	13.0	8.9
Muir	188	17.7%	3.31	37.8%	39.4%	222	12.7	8.4
Marshall	180	17.0%	3.21	38.9%	29.4%	217	13.1	8.4
Warren	171	16.1%	3.21	34.5%	31.6%	223	12.9	9.2
Roosevelt	136	12.8%	3.19	46.3%	21.3%	222	13.6	9.2
Sixth	130	12.3%	3.18	44.6%	25.4%	218	13.0	9.2
<b>School Type</b>								
High School	784	74.0%	3.25	40.7%	31.6%	224	13.0	--
2yr College	259	24.4%	3.14	35.9%	25.9%	212	--	8.8
4yr College/Univ.	17	1.6%	3.13	35.3%	17.6%	224	--	--
Unknown	0	0.0%	--	--	--	--	--	--
<b>First Generation College Status</b>								
First Generation	334	31.5%	3.14	37.1%	25.1%	221	13.5	8.7
Not First Generation	726	68.5%	3.25	40.5%	32.2%	221	12.8	8.9
<b>Income</b>								
High: > \$98,401	276	26.0%	3.30	38.0%	37.7%	222	12.6	8.8
Medium High: \$65,601 - \$98,400	105	9.9%	3.19	39.0%	25.7%	219	13.1	7.9
Medium Low: \$32,801 - \$65,600	208	19.6%	3.19	38.0%	28.4%	224	13.4	8.1
Low: < \$32,800	241	22.7%	3.10	41.5%	19.1%	221	13.6	9.1
Missing/Undeclared	230	21.7%	3.28	40.4%	35.7%	219	12.3	9.4
<b>Total Biology</b>	1,060	100.0%	3.22	39.4%	30.0%	221	13.0	8.8

\* Five or fewer cases.

## Bachelor Degrees in Biology: Trends Profile - 2003/2004 to 2012/2013

Student Characteristics	N	%	Academic Profile				Time-to-Degree	
			GPA Mean	% GPA 3.0 - 3.5	% GPA ≥ 3.5	Units Mean	Freshmen Mean	C.C. Transfer Mean
<b>Award Year</b>								
2012/2013	1,215	100.0%	3.20	37%	30%	220	13.0	8.6
2011/2012	1,478	100.0%	3.15	39%	25%	218	12.9	8.3
2010/2011	1,483	100.0%	3.15	41%	24%	218	12.9	8.4
2009/2010	1,268	100.0%	3.17	42%	25%	218	12.8	8.3
2008/2009	1,173	100.0%	3.13	40%	23%	215	12.9	7.9
2007/2008	1,113	100.0%	3.15	39%	24%	215	12.8	7.9
2006/2007	939	100.0%	3.17	38%	27%	215	12.8	8.1
2005/2006	906	100.0%	3.17	37%	27%	214	12.9	8.0
2004/2005	752	100.0%	3.14	39%	25%	213	12.9	8.6
2003/2004	661	100.0%	3.12	35%	25%	213	13.2	8.6

## Profile of Bachelor Degree Recipients Majoring in the Social Sciences: 2013/2014



The majority of social science degree recipients were female (61%).

The average grade point average for the 2013/2014 social science degree recipients was 3.13.

Approximately, 62% of social science majors graduated with a GPA of 3.0 or higher; twenty-three percent graduated with a GPA of 3.5 or higher.

Student Characteristics	N	%	Academic Profile				Time-to-Degree	
			GPA Mean	% GPA 3.0 - 3.5	% GPA ≥ 3.5	Units Mean	Freshmen Mean	C.C. Transfer Mean
<b>Gender</b>								
Female	1,745	60.7%	3.17	41.1%	25.4%	205	12.7	7.2
Male	1,128	39.3%	3.06	36.6%	18.9%	204	13.5	7.8
<b>Ethnicity</b>								
African Am.	55	1.9%	3.15	43.6%	18.2%	209	13.4	7.9
Asian	1,310	45.6%	3.07	38.7%	18.4%	204	13.0	7.1
Mexican Am.	333	11.6%	3.06	40.5%	15.6%	204	13.3	7.8
Filipino	104	3.6%	3.05	31.7%	15.4%	207	12.9	7.7
Latino	119	4.1%	3.04	37.0%	19.3%	203	13.2	7.6
Native Am.	15	0.5%	3.22	66.7%	13.3%	207	11.1	8.0
Caucasian	634	22.1%	3.27	41.2%	33.3%	203	12.6	7.6
Other	303	10.5%	3.23	38.6%	33.3%	210	12.7	8.1
<b>College</b>								
Revelle	325	11.3%	3.03	34.2%	16.9%	214	13.4	7.8
Muir	522	18.2%	3.16	38.9%	26.1%	204	12.7	7.6
Marshall	624	21.7%	3.13	39.4%	23.9%	199	12.8	7.2
Warren	370	12.9%	3.09	37.3%	19.7%	205	12.9	7.5
Roosevelt	580	20.2%	3.16	41.6%	24.1%	205	13.1	7.6
Sixth	452	15.7%	3.15	42.5%	22.8%	205	12.8	7.5
<b>School Type</b>								
High School	1,568	54.6%	3.17	41.2%	24.7%	210	12.9	--
2yr College	1,239	43.1%	3.08	36.5%	20.3%	198	--	7.5
4yr College/Univ.	62	2.2%	3.26	53.2%	29.0%	205	--	--
Unknown	4	0.1%	2.90	0.0%	0.0%	204	--	--
<b>First Generation College Status</b>								
First Generation	1,056	36.8%	3.06	37.9%	17.2%	203	13.3	7.3
Not First Generation	1,817	63.2%	3.17	40.2%	26.1%	205	12.7	7.6
<b>Income</b>								
High: > \$98,401	700	24.4%	3.19	42.6%	26.0%	202	12.5	6.9
Medium High: \$65,601 - \$98,400	285	9.9%	3.16	39.3%	25.3%	204	12.6	7.2
Medium Low: \$32,801 - \$65,600	537	18.7%	3.13	39.7%	22.7%	207	13.0	7.4
Low: < \$32,800	706	24.6%	3.05	38.1%	17.1%	206	13.3	7.7
Missing/Undeclared	645	22.5%	3.13	37.1%	24.7%	204	12.9	7.9
<b>Total Social Sciences</b>	2,873	100.0%	3.13	39.4%	22.8%	205	12.9	7.5

\* Five or fewer cases.

## Bachelor Degrees in Social Sciences: Trends Profile - 2003/2004 to 2012/2013

Student Characteristics	N	%	Academic Profile				Time-to-Degree	
			GPA Mean	% GPA 3.0 - 3.5	% GPA ≥ 3.5	Units Mean	Freshmen Mean	C.C. Transfer Mean
<b>Award Year</b>								
2012/2013	2,929	100.0%	3.12	39%	23%	205	12.9	7.3
2011/2012	3,034	100.0%	3.13	40%	23%	204	12.9	7.1
2010/2011	2,906	100.0%	3.12	41%	21%	203	12.8	7.1
2009/2010	2,816	100.0%	3.11	40%	22%	203	12.6	7.4
2008/2009	2,499	100.0%	3.10	40%	21%	202	12.8	7.2
2007/2008	2,577	100.0%	3.12	43%	20%	201	12.7	7.5
2006/2007	2,446	100.0%	3.12	42%	21%	201	12.8	7.0
2005/2006	2,486	100.0%	3.15	42%	22%	200	12.6	7.3
2004/2005	2,406	100.0%	3.12	43%	20%	199	12.8	7.1
2003/2004	2,022	100.0%	3.14	42%	22%	199	13.0	7.3



*Degrees Conferred* is an annual publication of the  
Office of Student Research & Information,  
Student Affairs, 858-534-2382.  
This document is also available on the  
World Wide Web at:  
[studentresearch.ucsd.edu](http://studentresearch.ucsd.edu)