

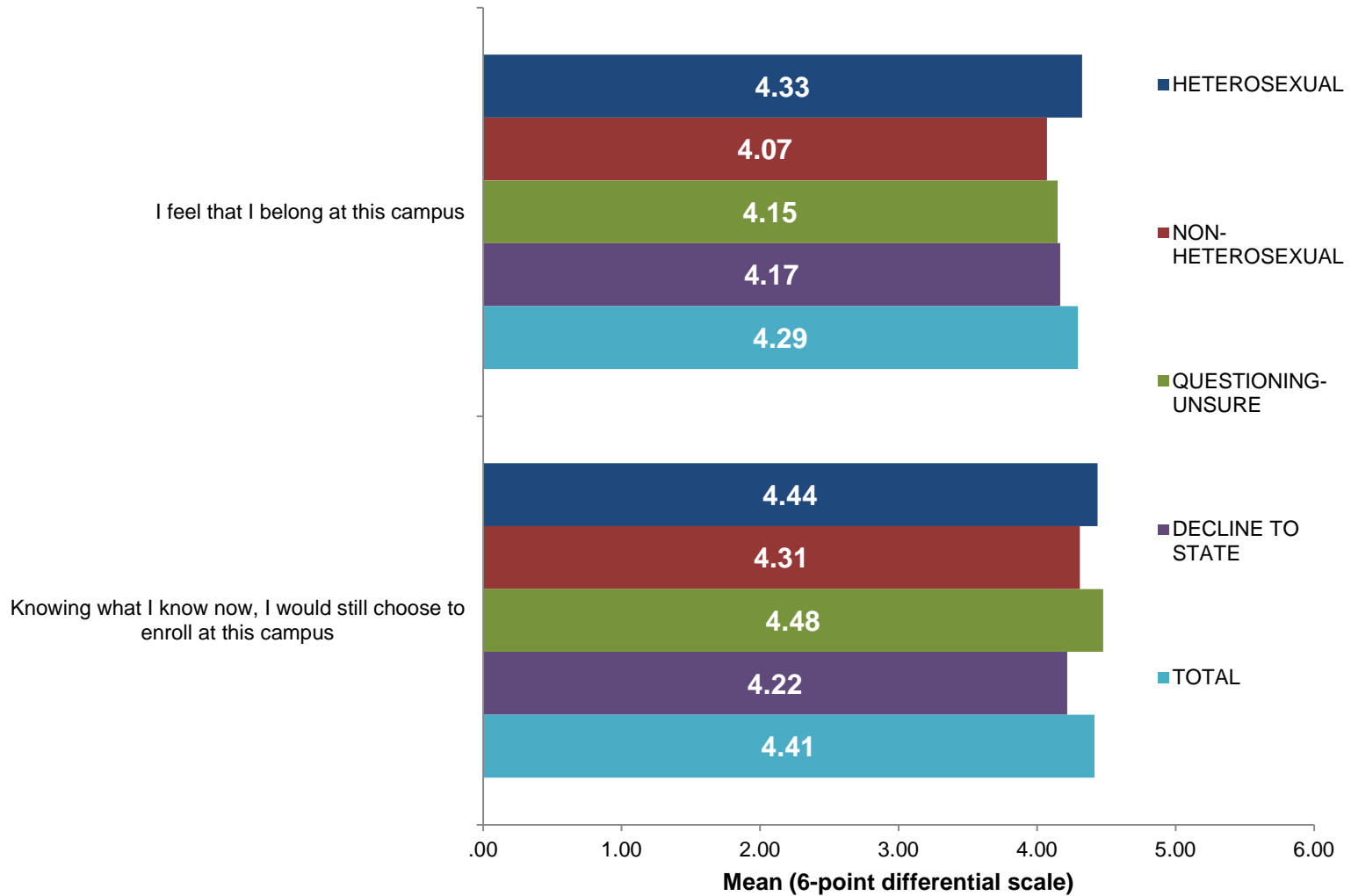
Campus Climate by Sexual Orientation

What is your sexual orientation?		Student Life and Development Module	Total UCUES Respondents
BISEXUAL	N	73	179
	%	2.8%	2.8%
GAY-LESBIAN	N	62	153
	%	2.4%	2.4%
HETEROSEXUAL	N	2,209	5,539
	%	84.5%	85.1%
QUESTIONING	N	36	88
	%	1.4%	1.4%
QUEER	N	26	53
	%	1.0%	.8%
DECLINE TO STATE	N	161	379
	%	6.2%	5.8%
OTHER	N	48	118
	%	1.8%	1.8%
TOTAL	N	2,615	6,509
	%	100.0%	100.0%

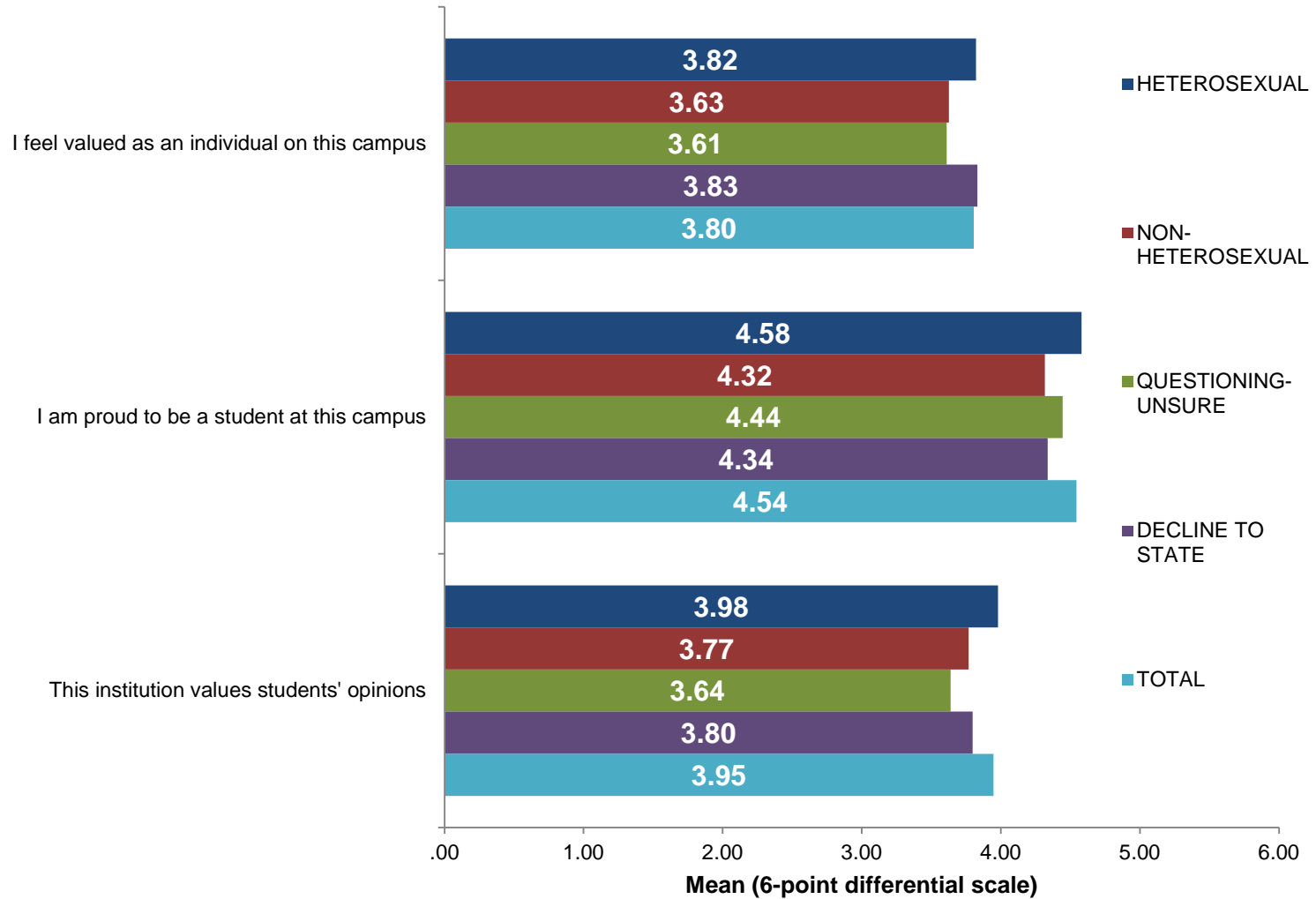
Campus Climate by Sexual Orientation

General Orientation Category		Student Life and Development Module	Total UCUES Respondents
HETEROSEXUAL	N	2,209	5,539
NON-HETEROSEXUAL	N	209	503
QUESTIONING-UNSURE	N	36	88
DECLINE TO STATE	N	161	379
TOTAL	N	2,615	6,509

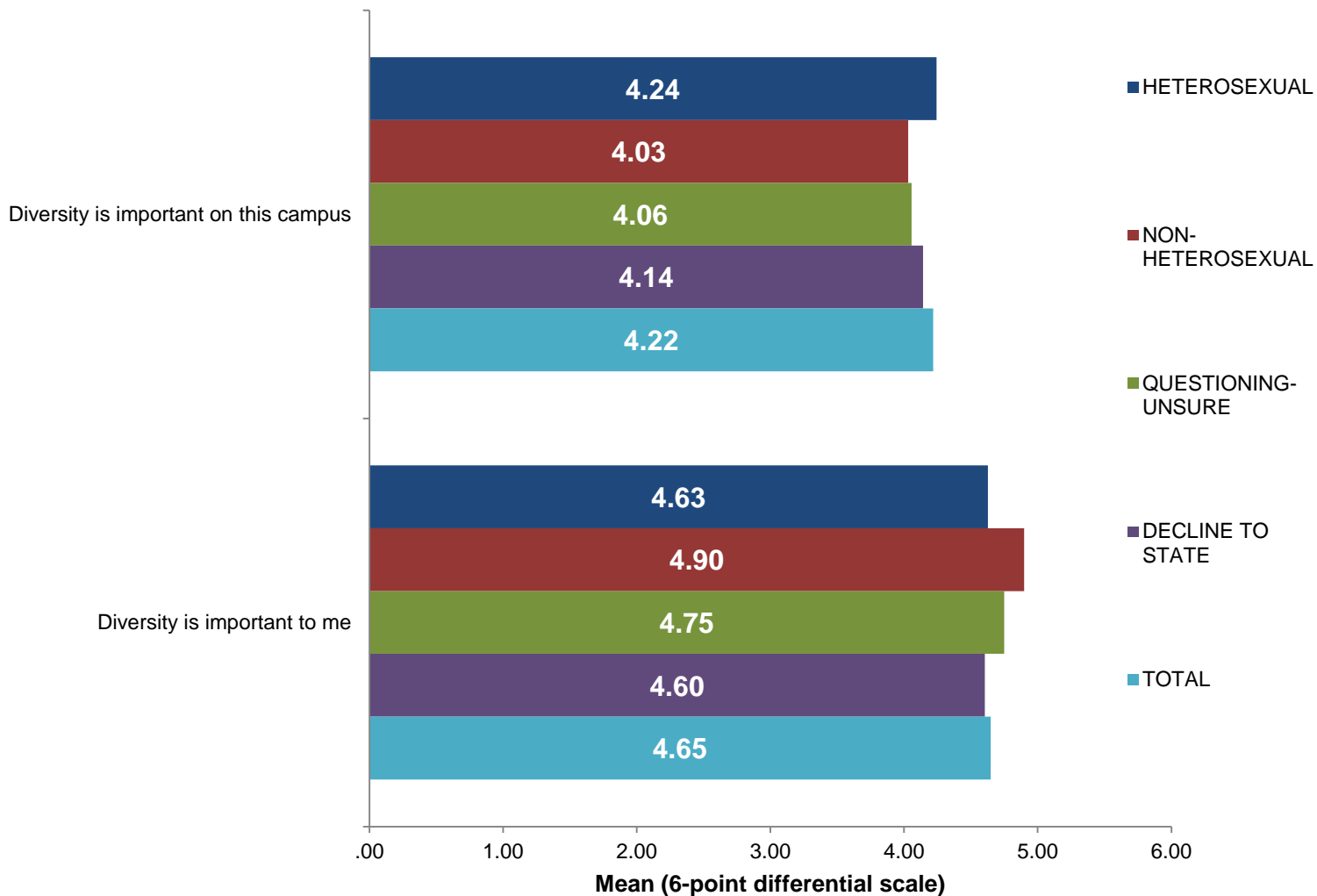
Campus Climate by Sexual Orientation



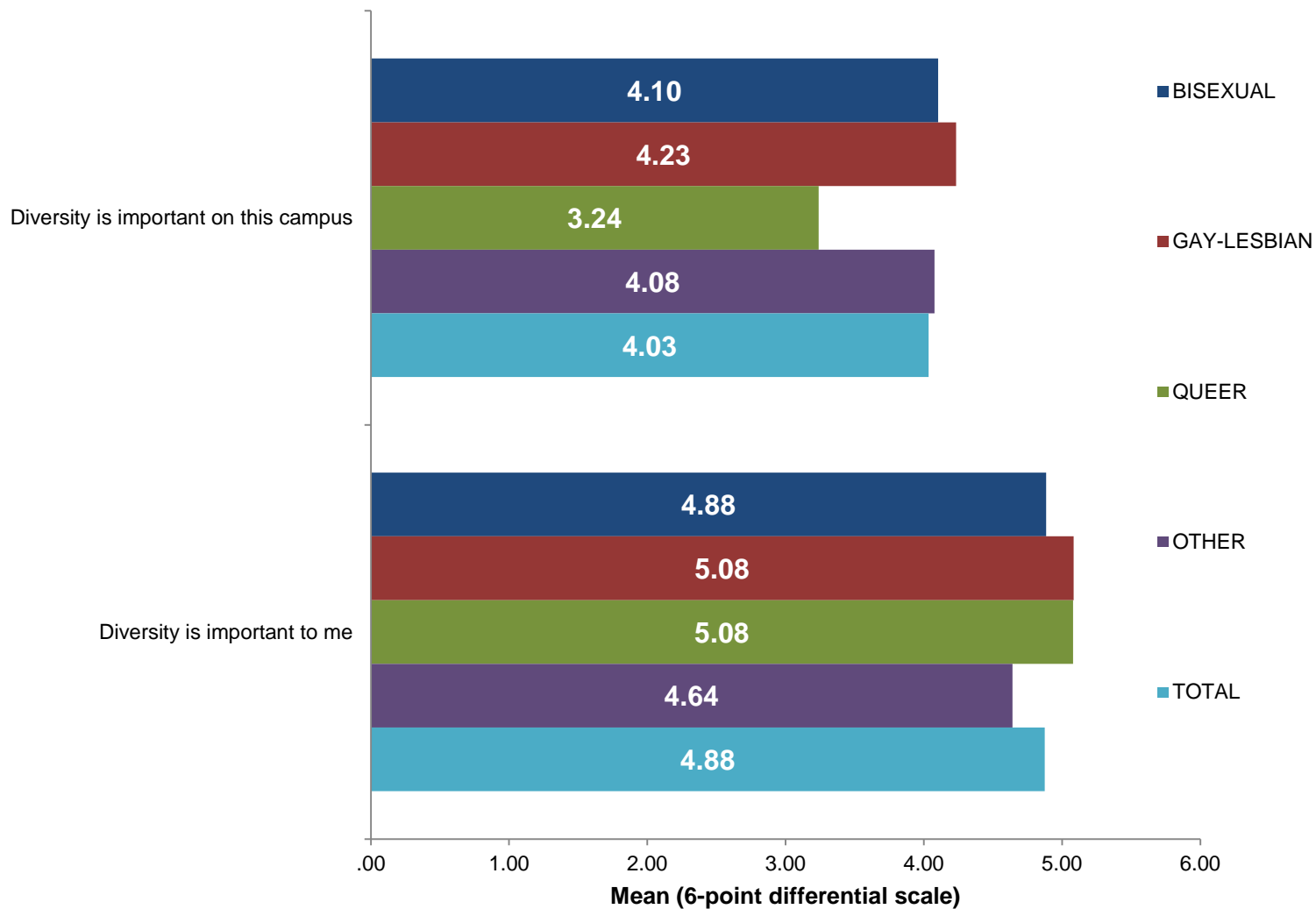
Campus Climate by Sexual Orientation



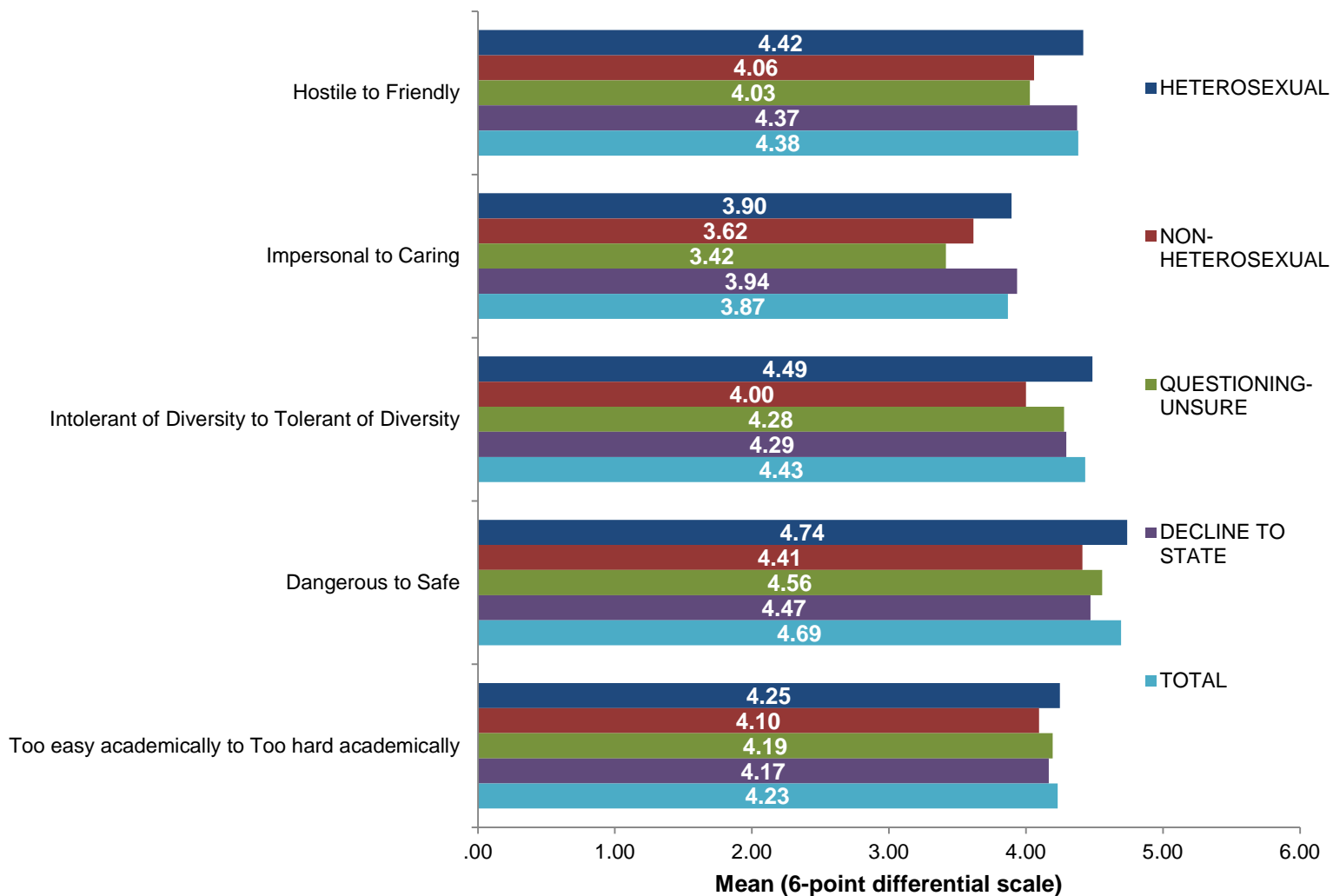
Campus Climate by Sexual Orientation



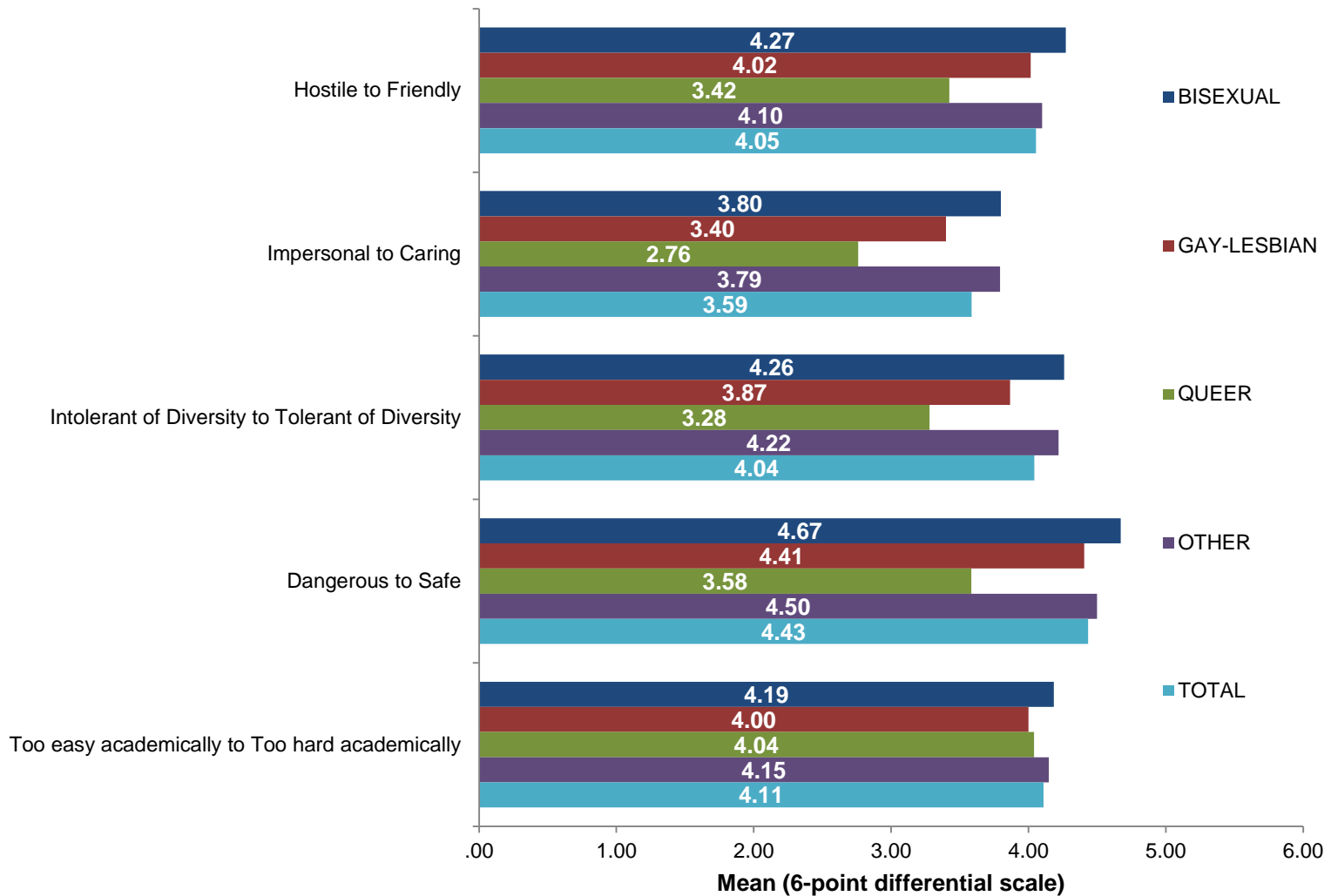
Campus Climate by Sexual Orientation



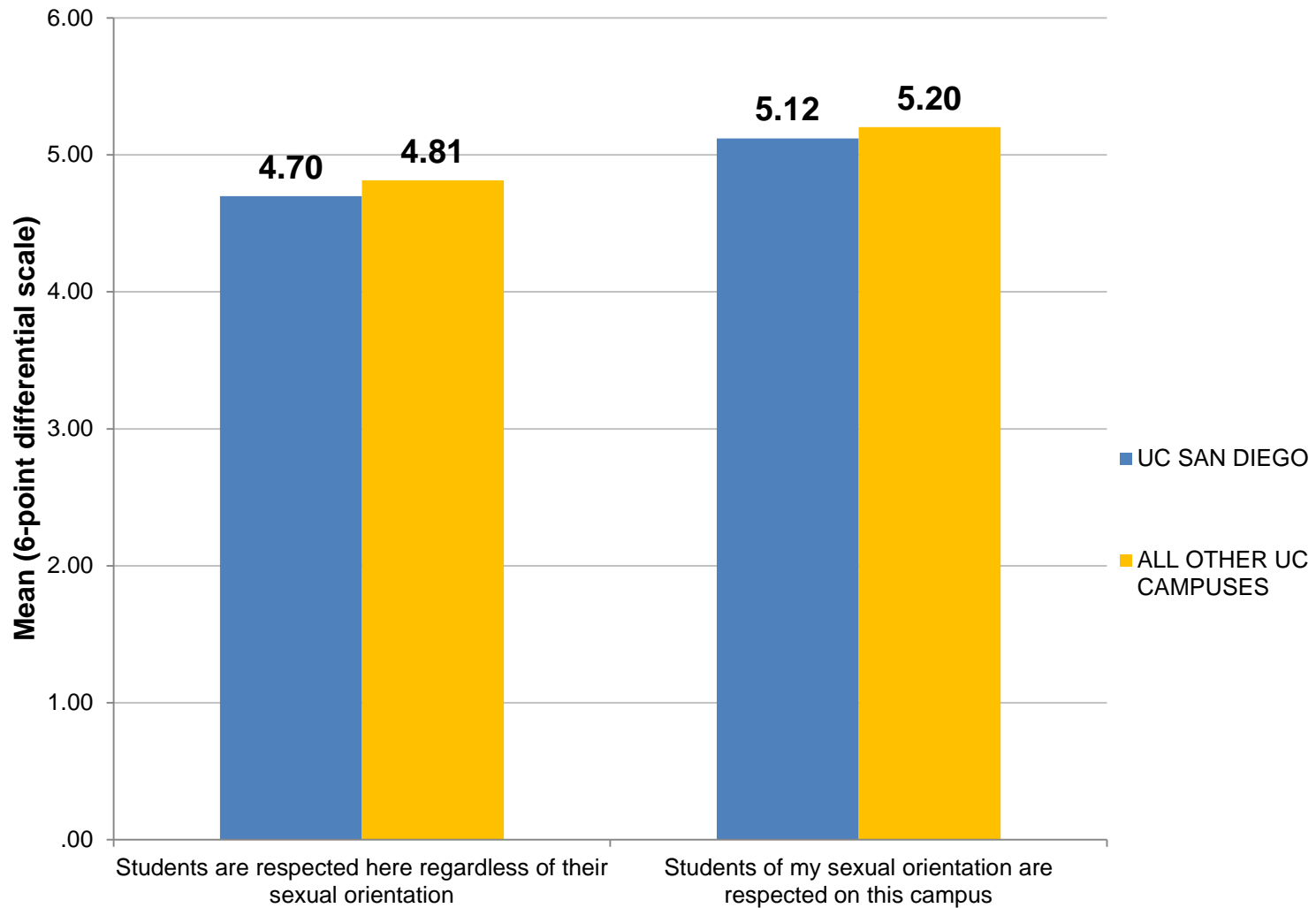
Campus Climate by Sexual Orientation



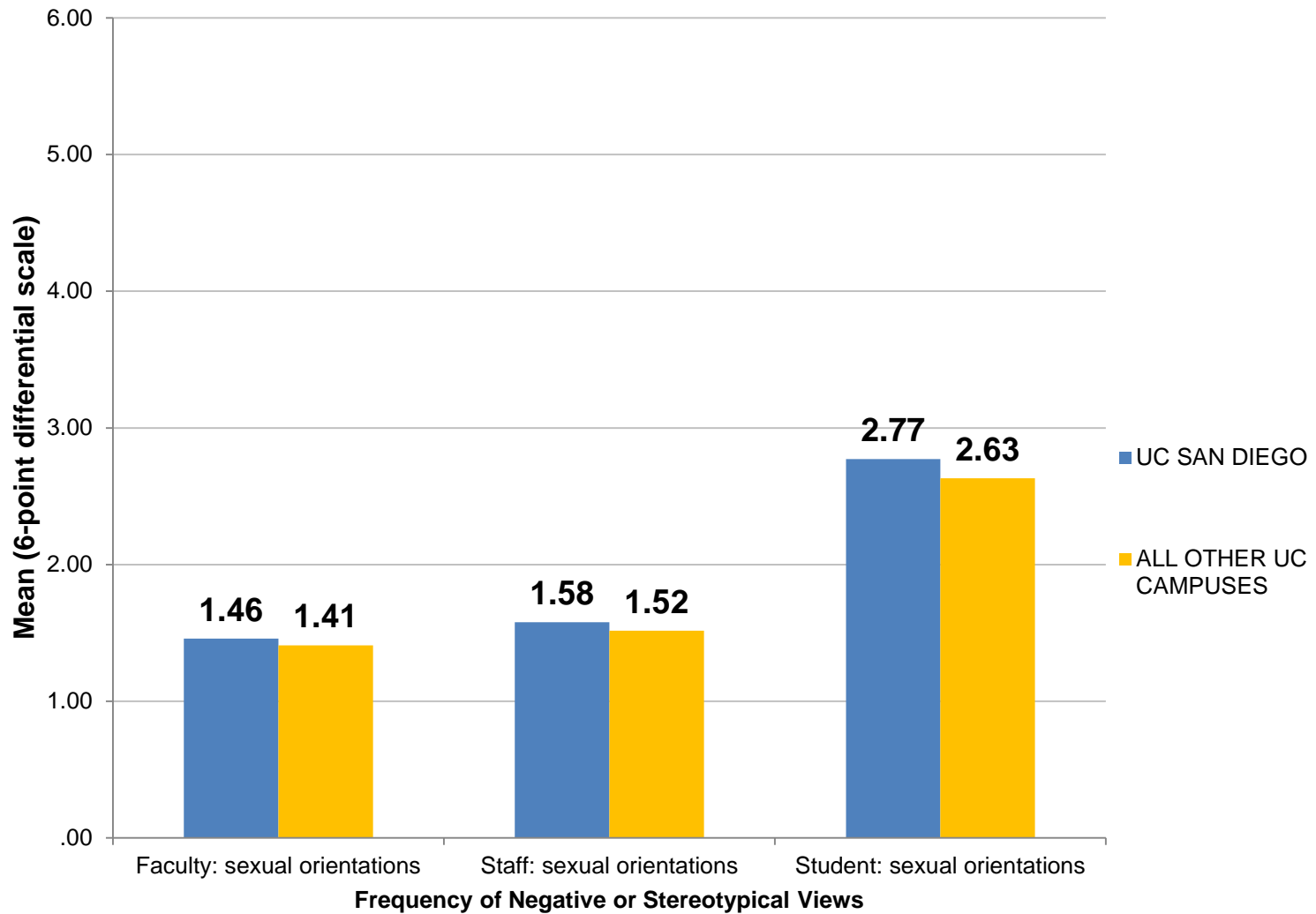
Campus Climate by Sexual Orientation



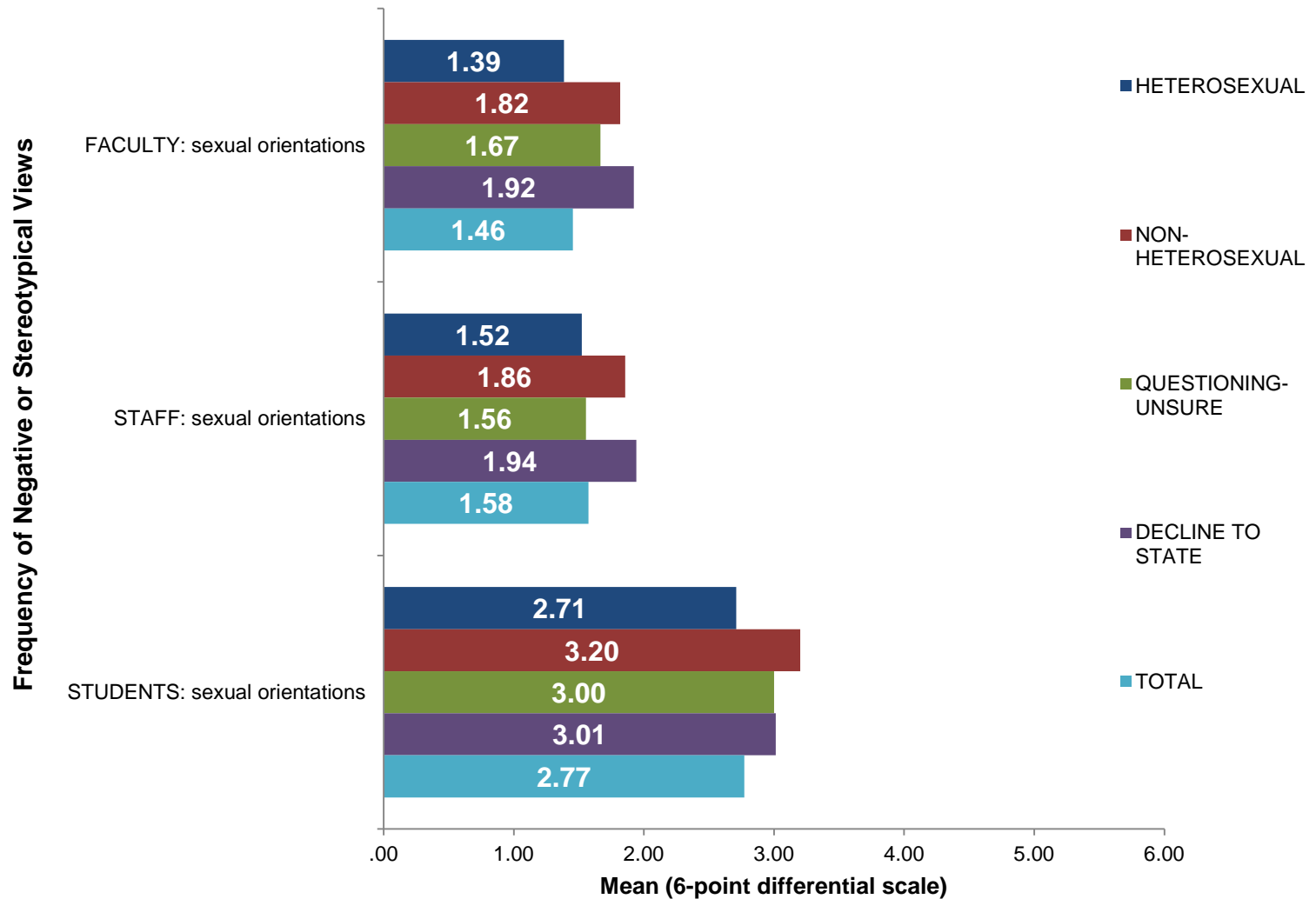
Campus Climate by Sexual Orientation



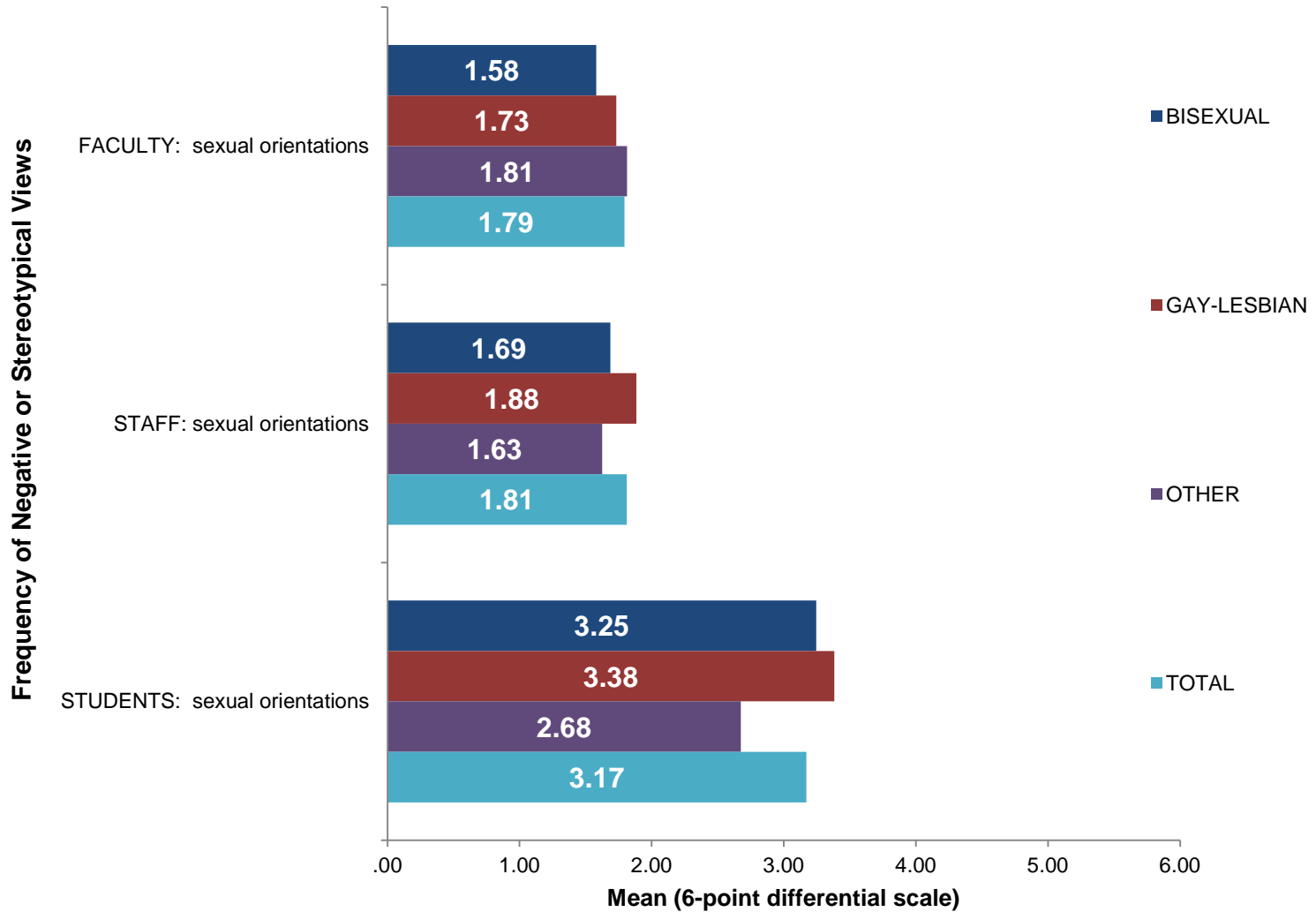
Campus Climate by Sexual Orientation



Campus Climate by Sexual Orientation

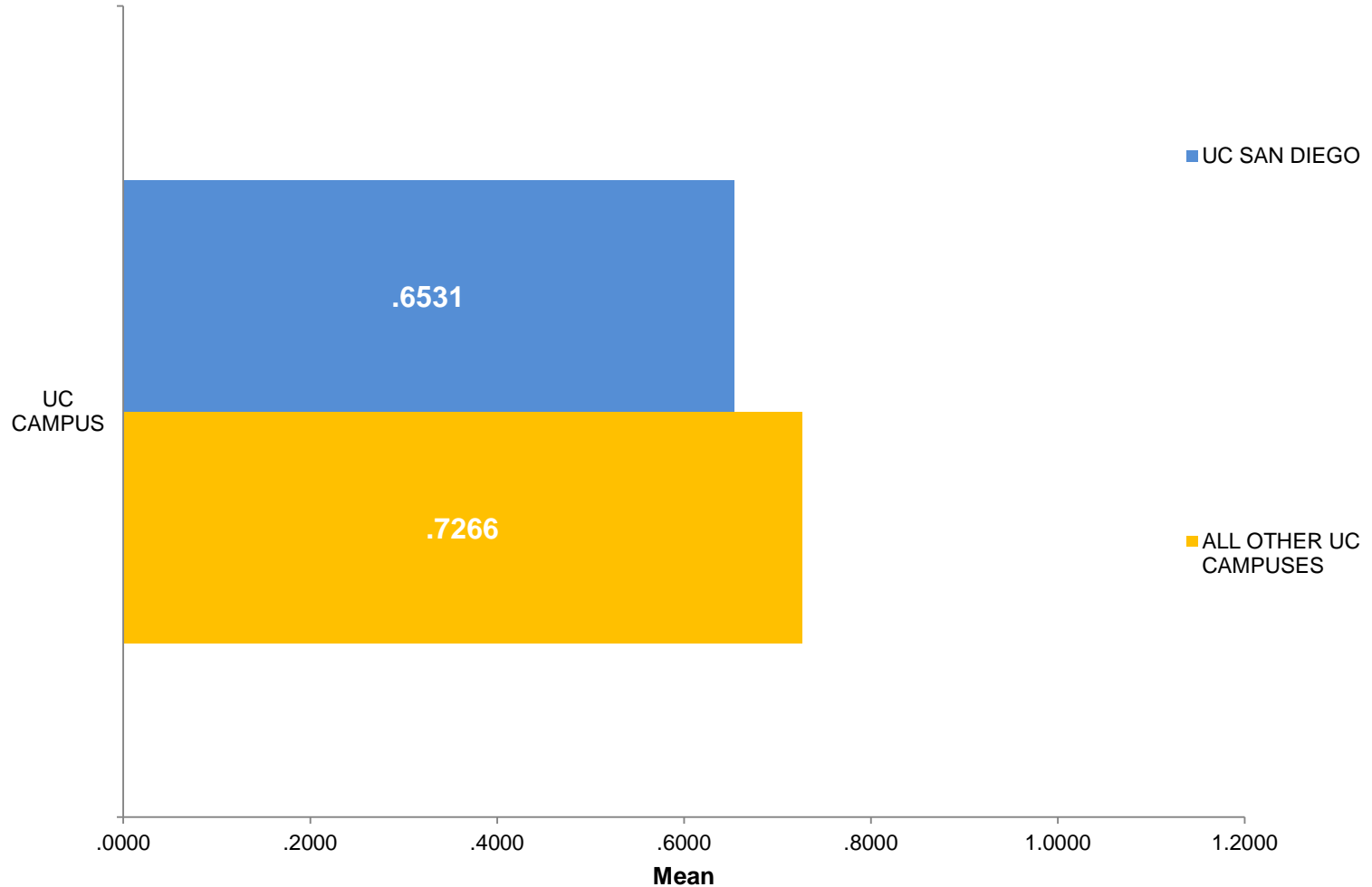


Campus Climate by Sexual Orientation



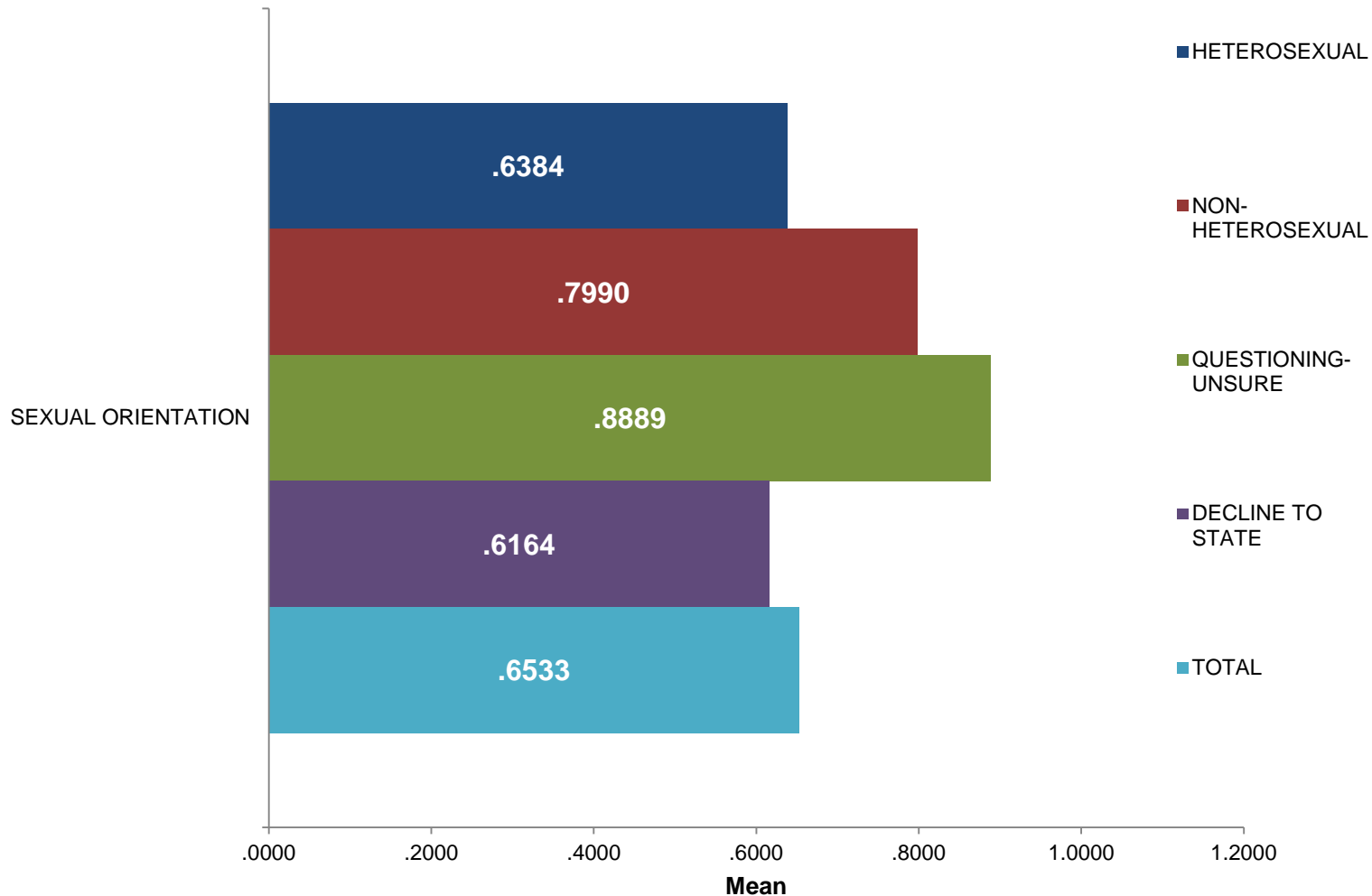
Campus Climate by Sexual Orientation

GAINS IN UNDERSTANDING SEXUAL ORIENTATION DIFFERENCES



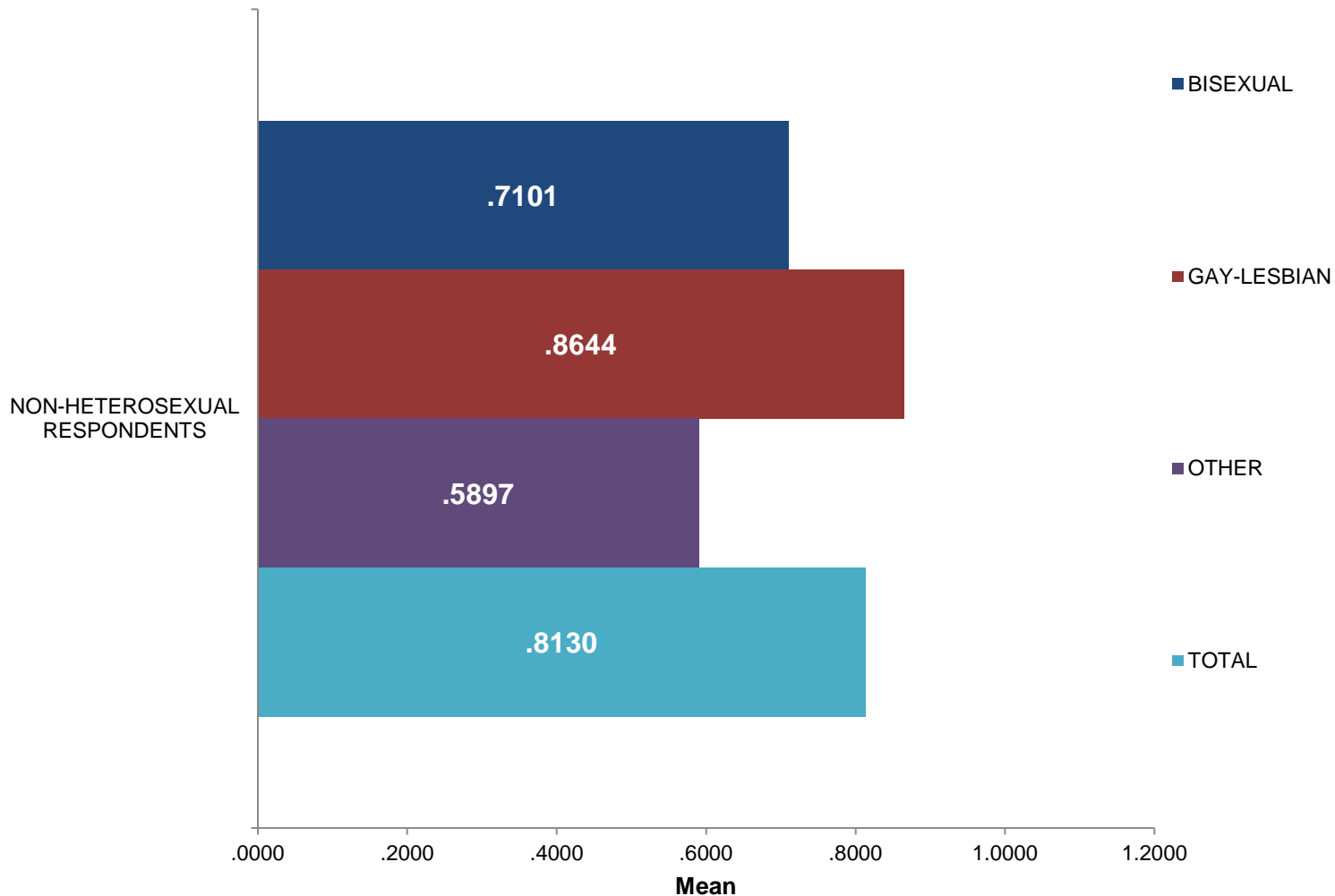
Campus Climate by Sexual Orientation

GAINS IN UNDERSTANDING SEXUAL ORIENTATION DIFFERENCES

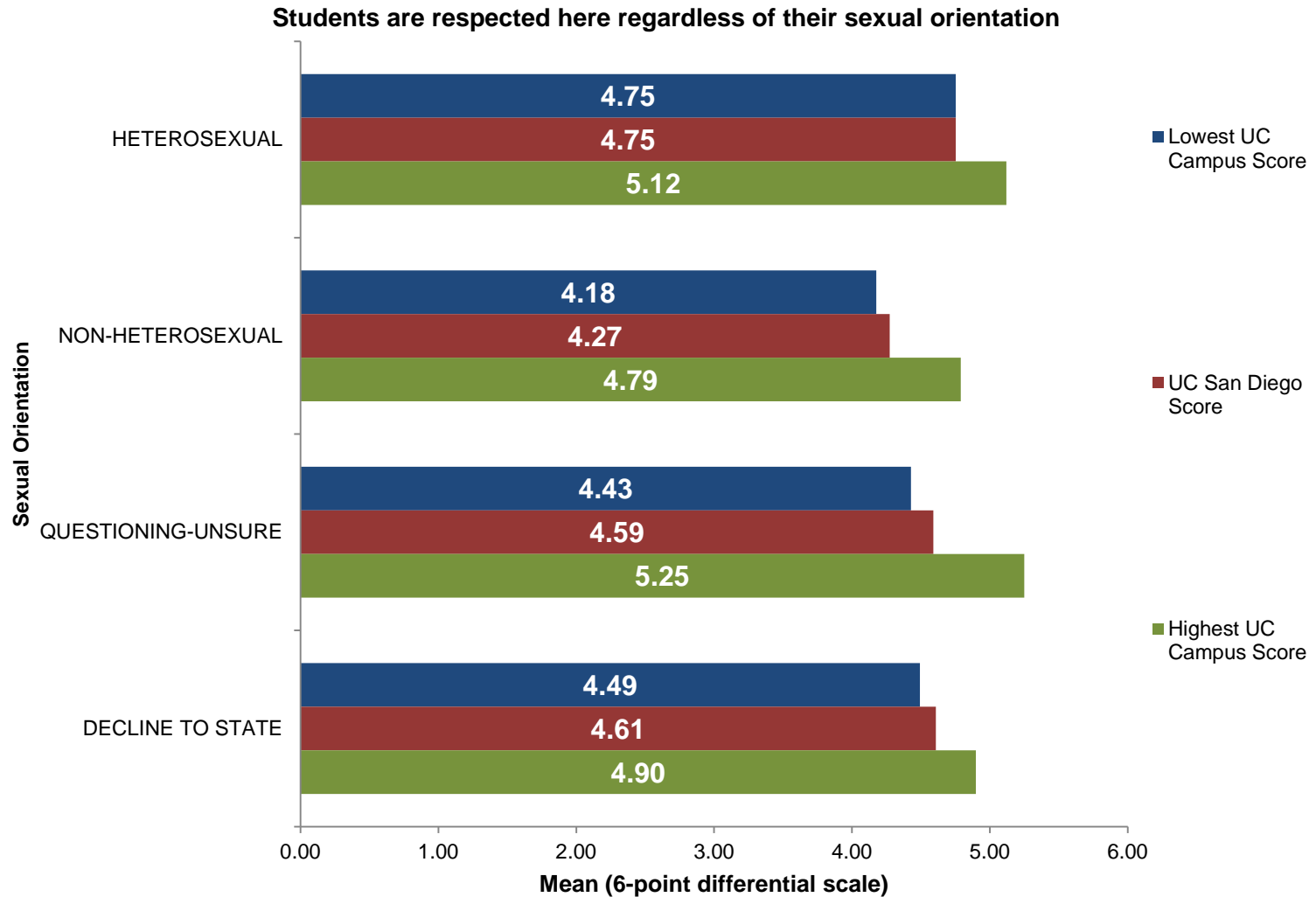


Campus Climate by Sexual Orientation

GAINS IN UNDERSTANDING SEXUAL ORIENTATION DIFFERENCES

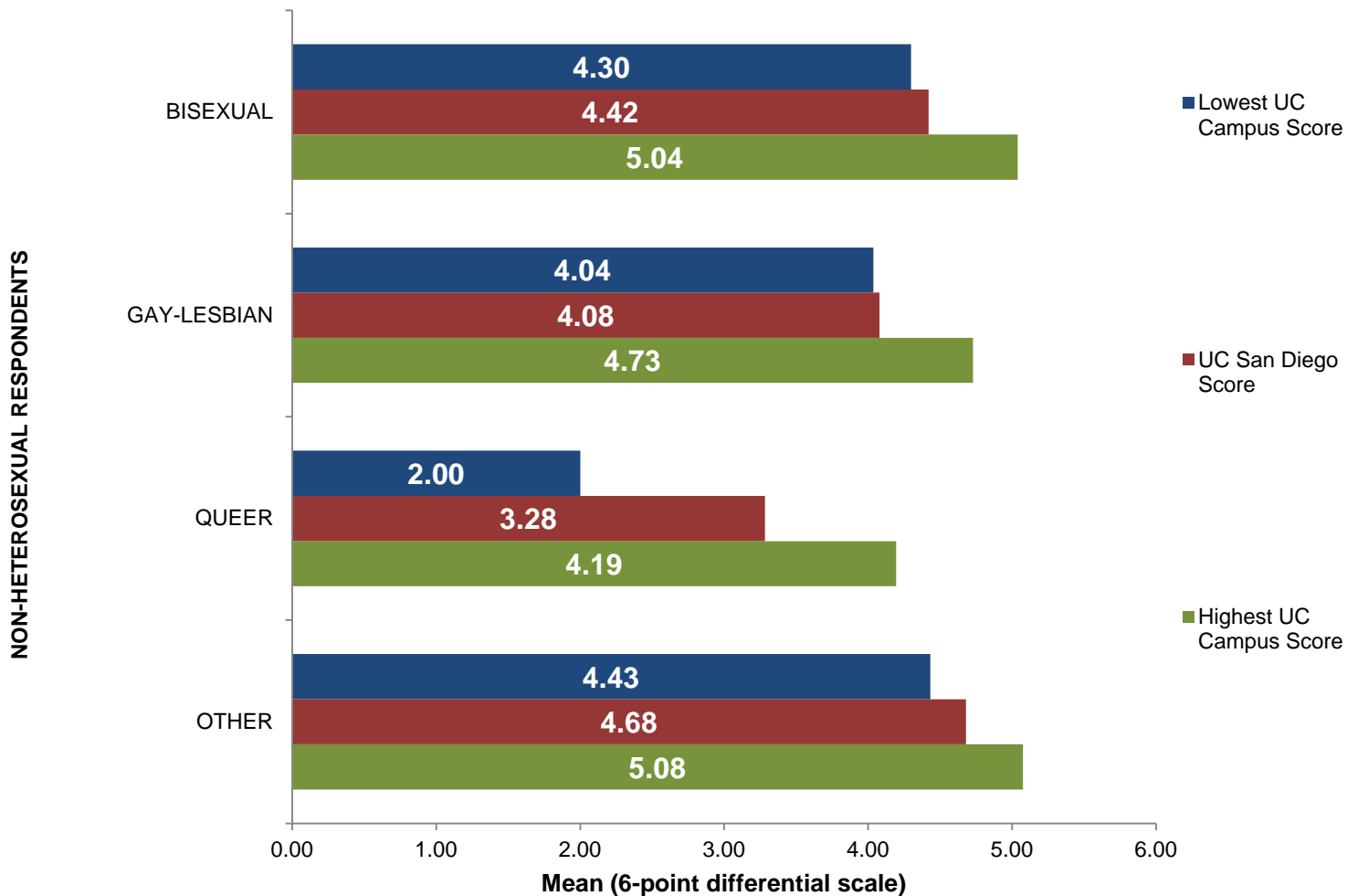


Campus Climate by Sexual Orientation

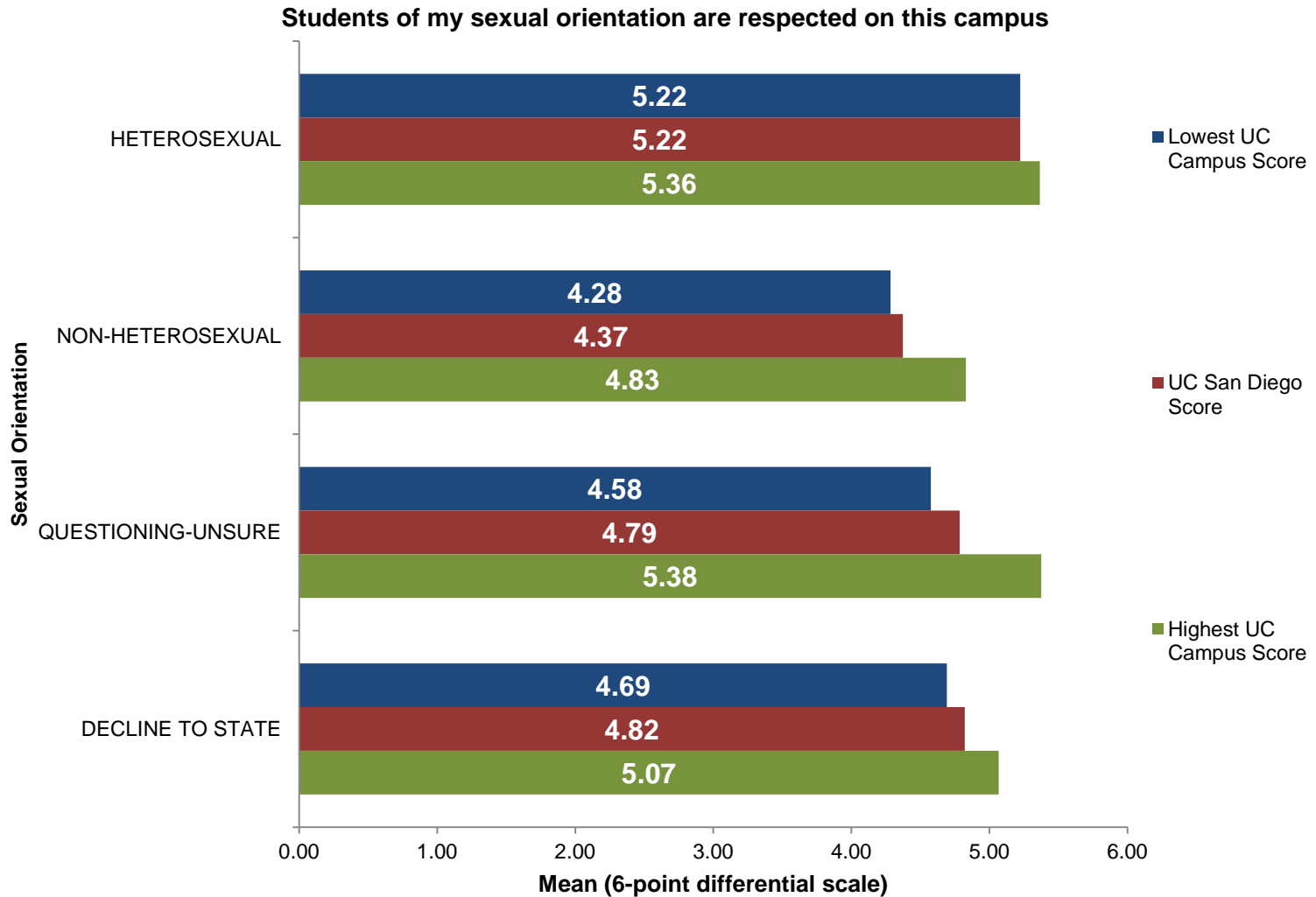


Campus Climate by Sexual Orientation

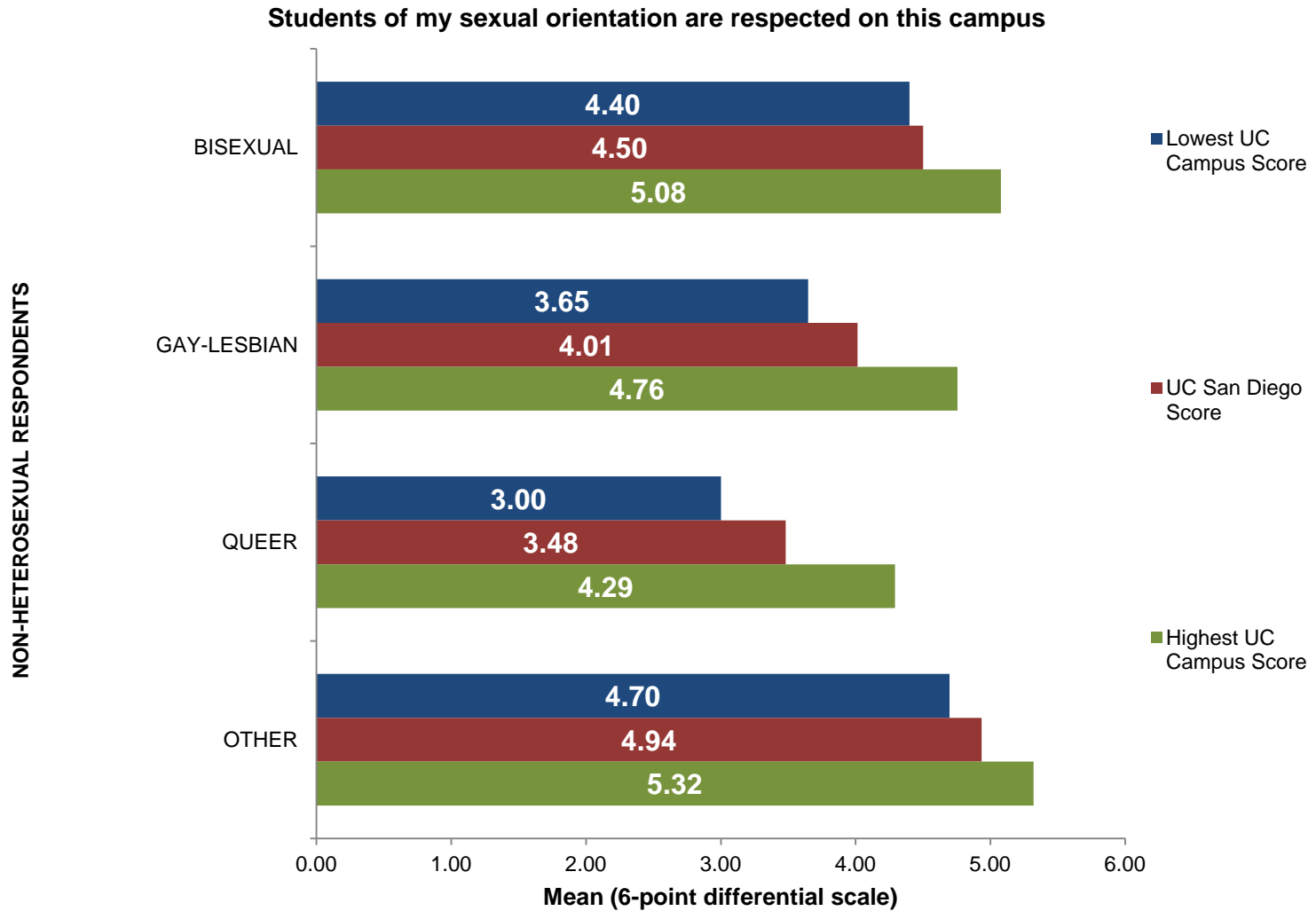
Students are respected here regardless of their sexual orientation



Campus Climate by Sexual Orientation

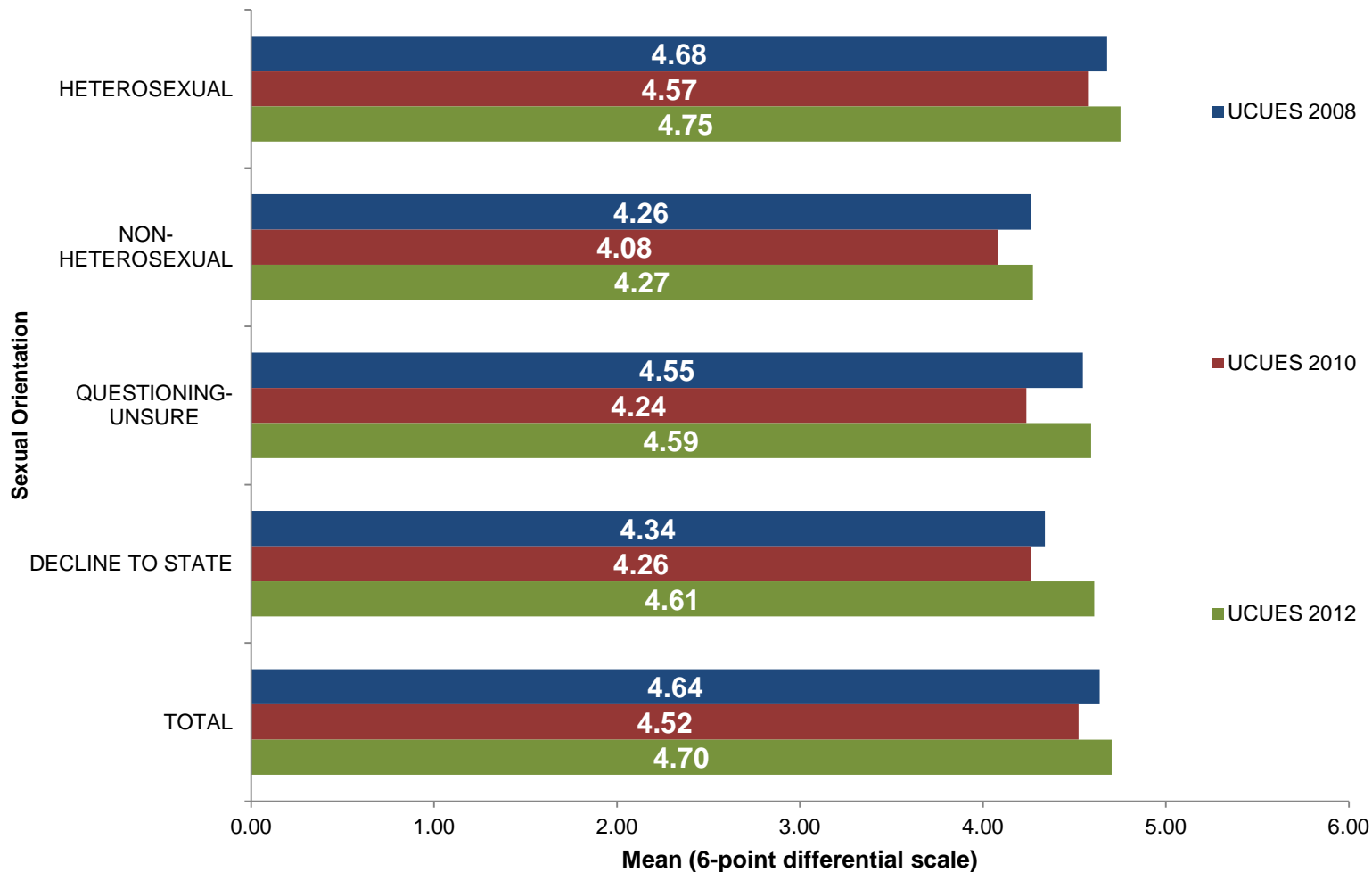


Campus Climate by Sexual Orientation



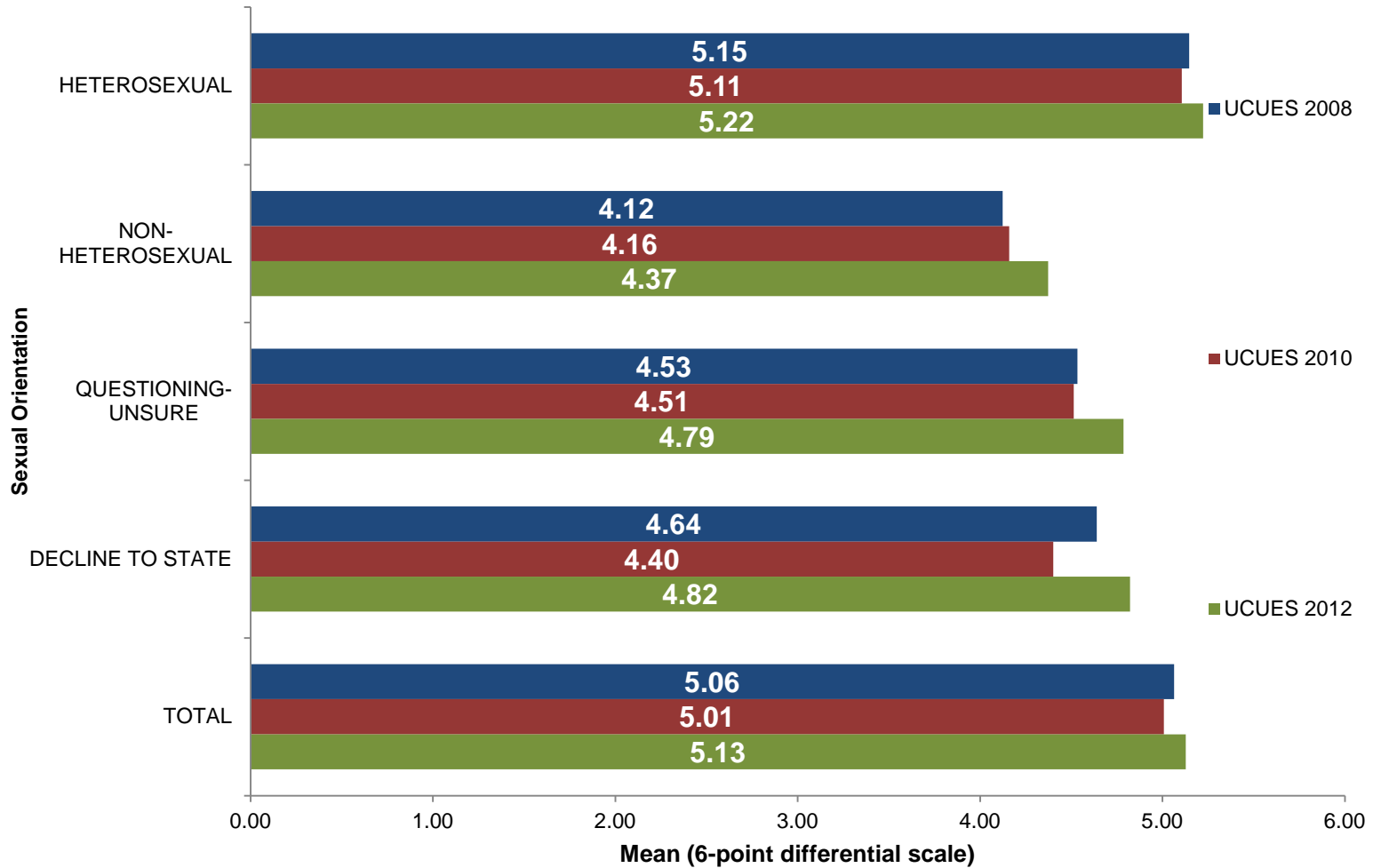
Campus Climate by Sexual Orientation

Students are respected here regardless of their sexual orientation



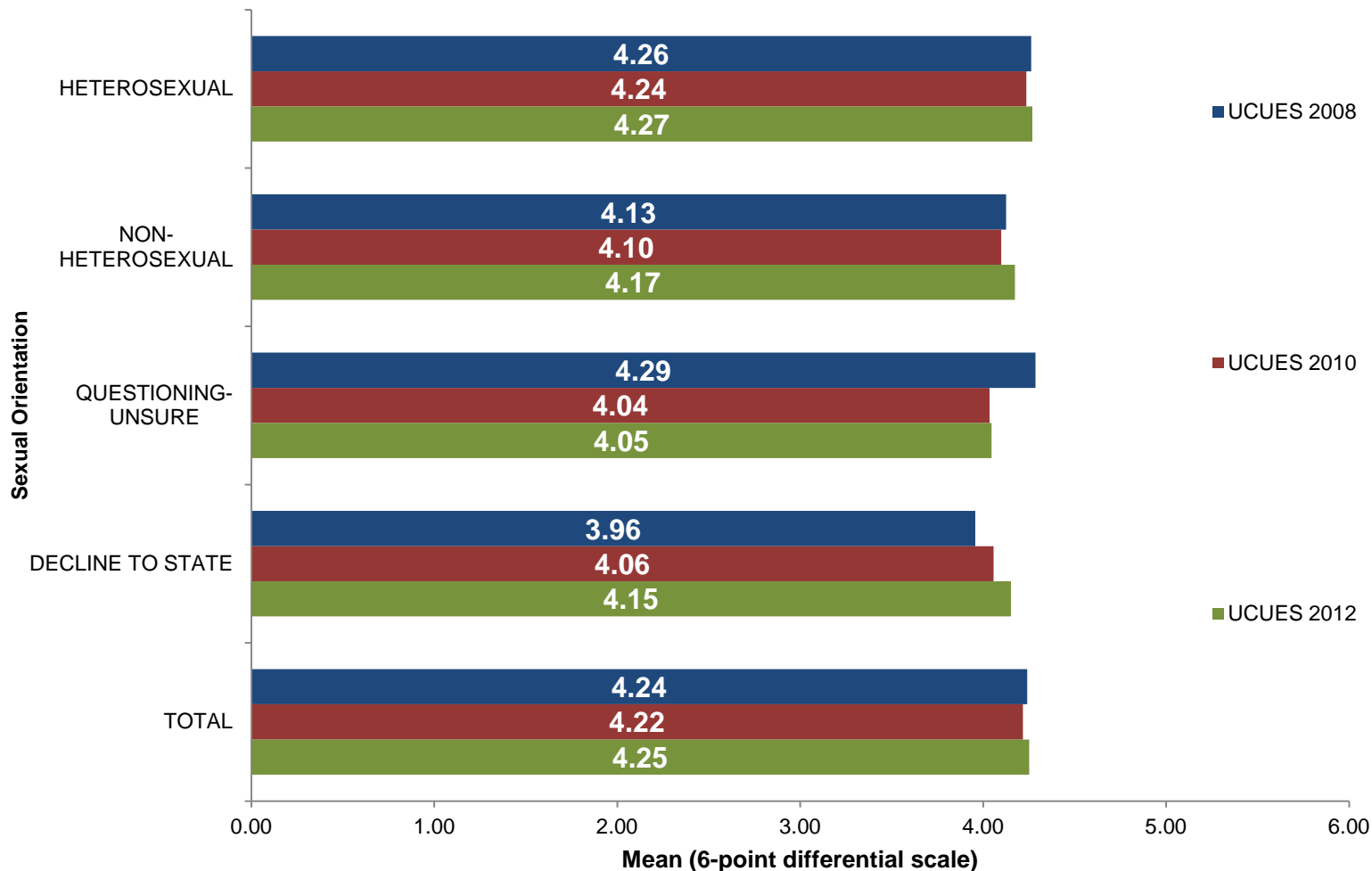
Campus Climate by Sexual Orientation

Students of my sexual orientation are respected on this campus

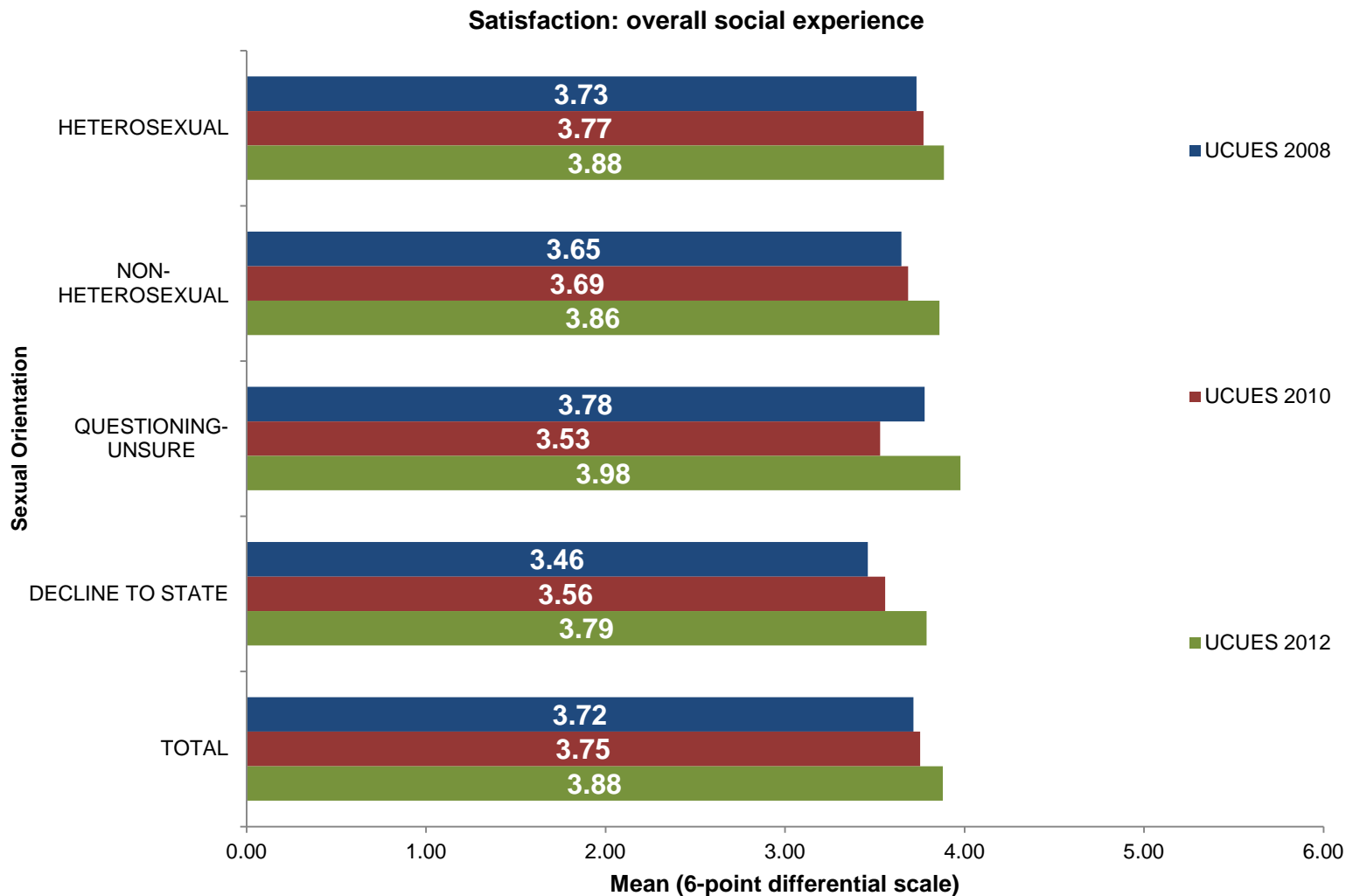


Campus Climate by Sexual Orientation

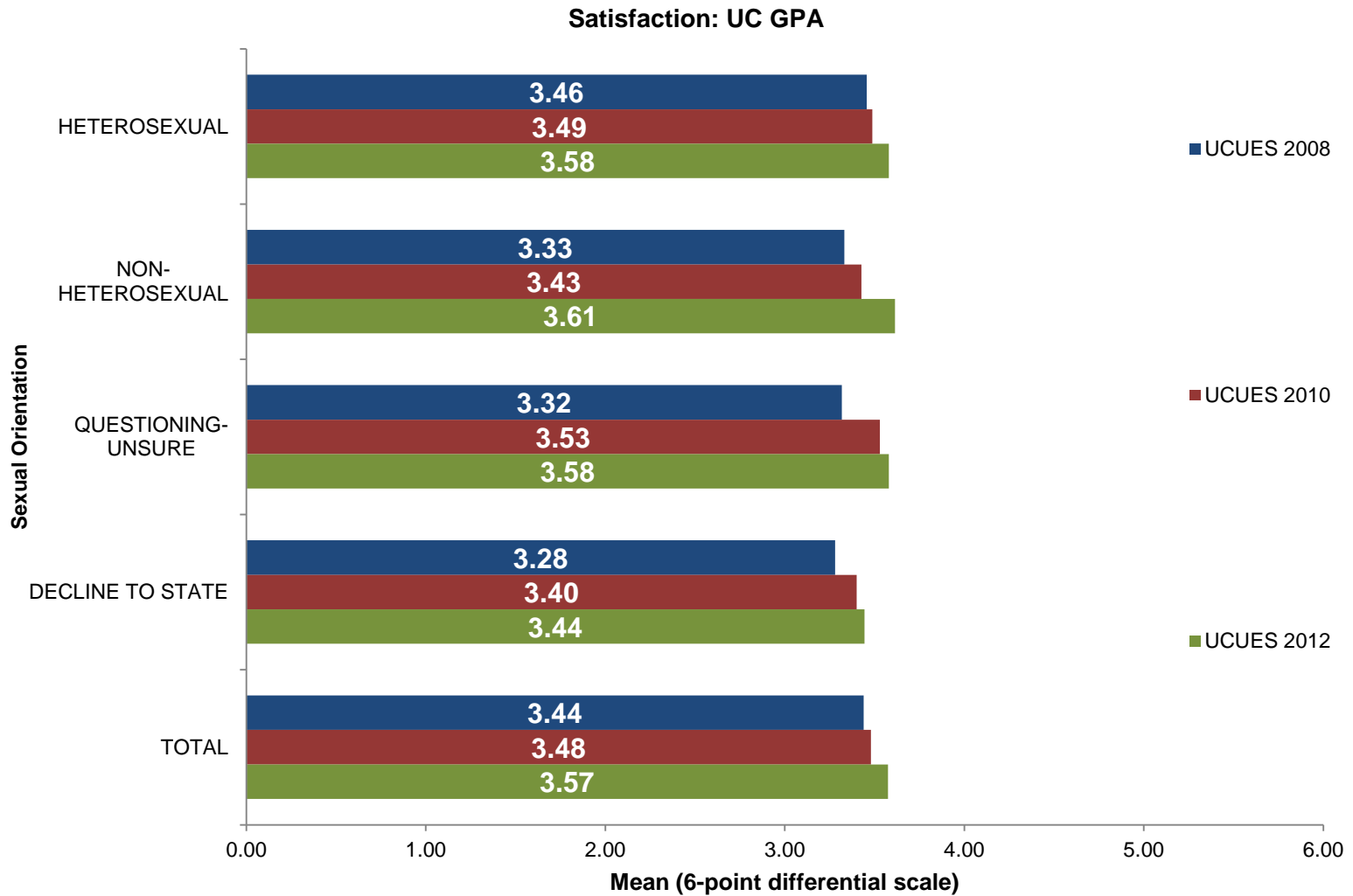
Satisfaction: overall academic experience



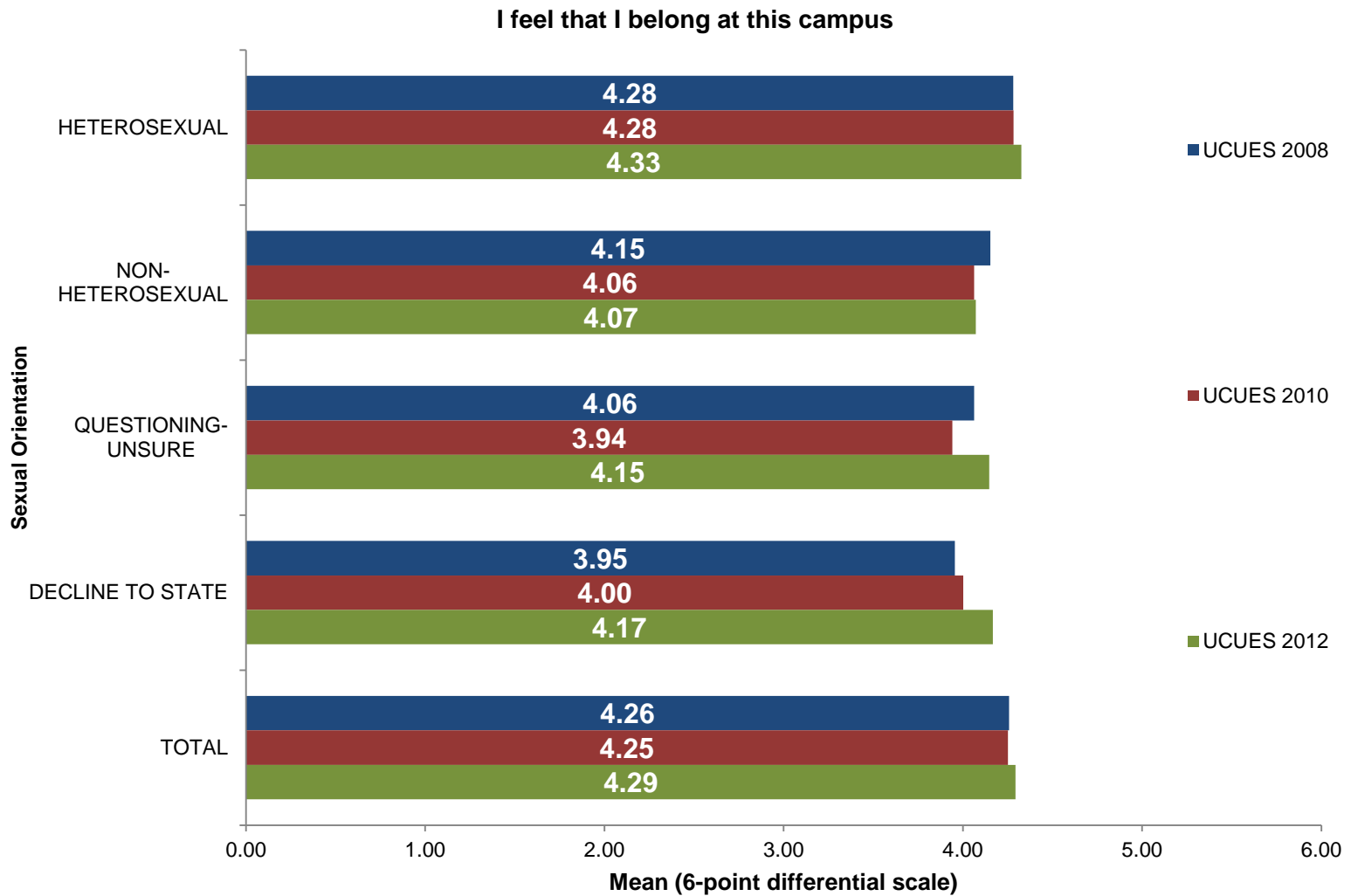
Campus Climate by Sexual Orientation



Campus Climate by Sexual Orientation

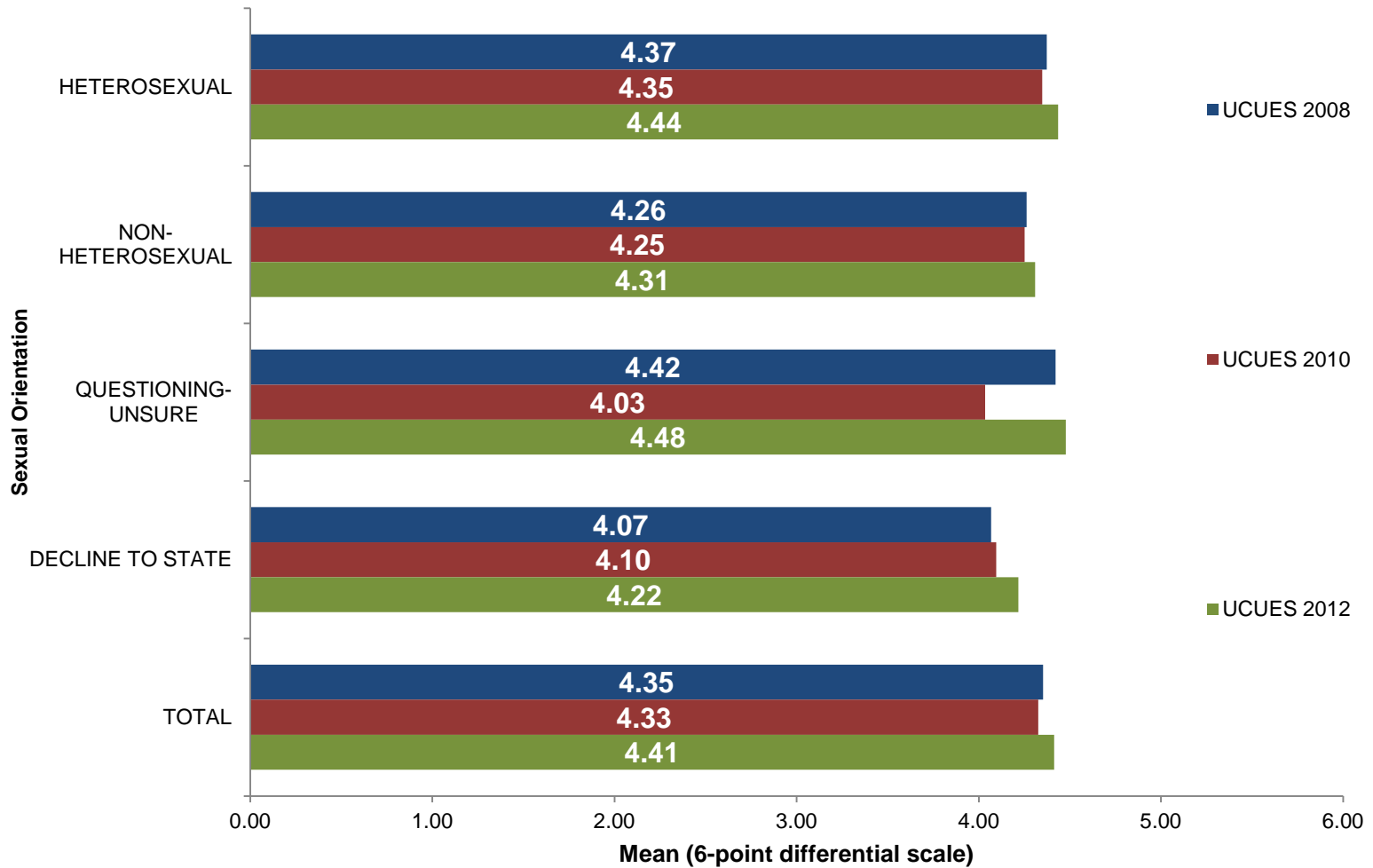


Campus Climate by Sexual Orientation



Campus Climate by Sexual Orientation

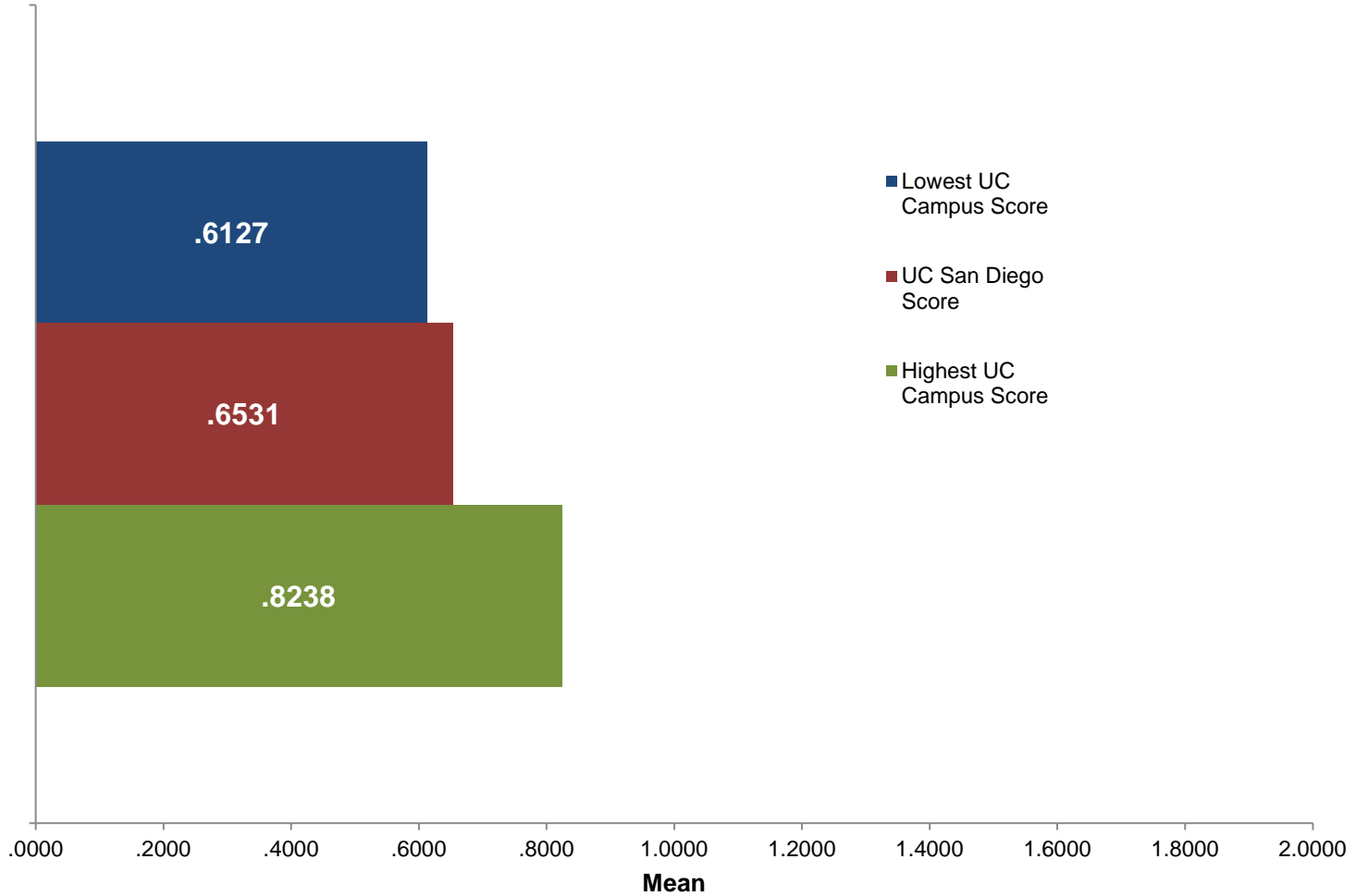
Knowing what I know now, I would still choose to enroll at this campus



Appendix

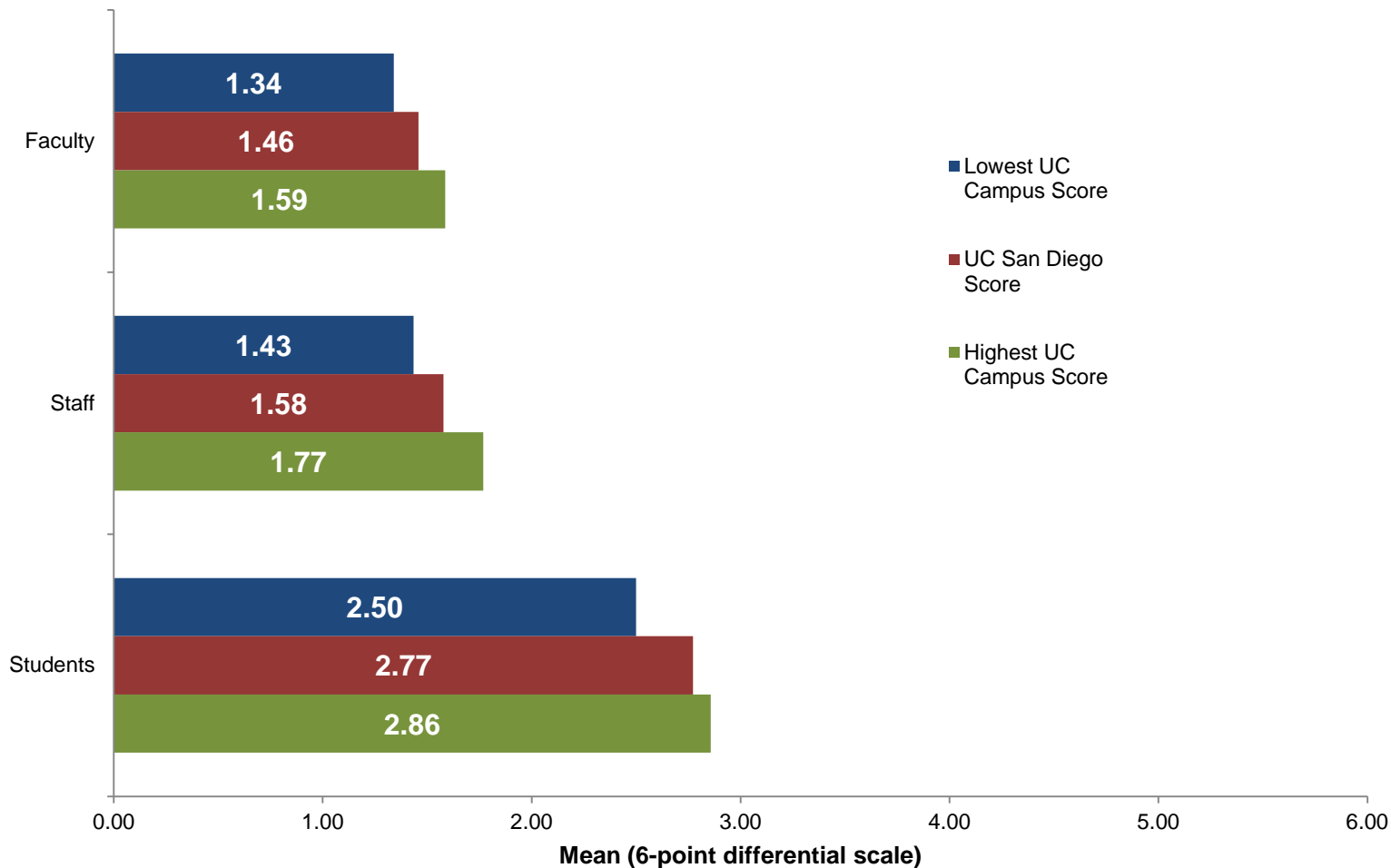
Campus Climate by Sexual Orientation

GAIN: AWARENESS-UNDERSTANDING OF SEXUAL ORIENTATION



Campus Climate by Sexual Orientation

HOW OFTEN HEARD NEGATIVE OR STEREOPTYPICAL VIEWS ON ORIENTATION EXPRESSED BY:





Campus Climate by Sexual Orientation

		WHAT IS YOUR SEXUAL ORIENTATION?				TOTAL
		HETEROSEXUAL	NON-HETEROSEXUAL	QUESTIONING-UNSURE	DECLINE TO STATE	
I BELONG AT THIS CAMPUS	SOMEWHAT AGREE TO STRONGLY AGREE	81.1%	72.9%	78.4%	76.4%	80.2%
KNOWING WHAT I KNOW, WOULD CHOOSE TO RE ENROLL AT MY CAMPUS	SOMEWHAT AGREE TO STRONGLY AGREE	79.9%	75.2%	78.4%	74.6%	79.2%
I FEEL VALUED AS AN INDIVIDUAL ON THIS CAMPUS	SOMEWHAT AGREE	39.2%	34.7%	25.0%	39.6%	38.6%
	AGREE	24.4%	20.9%	22.2%	14.9%	23.5%
	STRONGLY AGREE	4.2%	4.1%	8.3%	10.4%	4.6%
THIS INSTITUTION VALUES STUDENTS' OPINIONS	SOMEWHAT AGREE	37.7%	36.4%	27.8%	39.9%	37.6%
	AGREE	29.3%	25.1%	25.0%	17.6%	28.2%
	STRONGLY AGREE	5.8%	4.6%	8.3%	10.5%	6.0%
DIVERSITY IS IMPORTANT ON THIS CAMPUS	SOMEWHAT AGREE	33.4%	29.7%	30.6%	39.6%	33.5%
	AGREE	32.3%	30.3%	25.0%	24.0%	31.6%
	STRONGLY AGREE	12.8%	11.3%	16.7%	14.3%	12.8%
DIVERSITY IS IMPORTANT TO ME	SOMEWHAT AGREE	27.5%	19.9%	19.4%	36.4%	27.3%
	AGREE	35.7%	32.1%	27.8%	29.9%	34.9%
	STRONGLY AGREE	24.1%	37.2%	38.9%	23.4%	25.3%
STUDENTS ARE RESPECTED HERE REGARDLESS OF THEIR SEXUAL ORIENTATION	SOMEWHAT AGREE	21.7%	20.3%	23.9%	29.4%	22.0%
	AGREE	45.7%	34.3%	36.4%	36.5%	44.1%
	STRONGLY AGREE	22.2%	18.3%	23.9%	22.0%	21.9%
STUDENTS OF MY SEXUAL ORIENTATION ARE RESPECTED ON THIS CAMPUS	SOMEWHAT AGREE	10.1%	21.0%	26.2%	19.2%	11.7%
	AGREE	50.3%	33.1%	34.5%	49.5%	48.7%
	STRONGLY AGREE	37.5%	22.2%	28.6%	22.4%	35.3%
SEXUAL ORIENTATIONS: FACULTY	SOMEWHAT OFTEN	2.5%	5.6%	2.8%	11.1%	3.2%
	OFTEN	.9%	3.0%	0.0%	3.3%	1.2%
	VERY OFTEN	.2%	3.0%	2.8%	0.0%	.5%
SEXUAL ORIENTATIONS: STAFF	SOMEWHAT OFTEN	3.1%	4.1%	2.8%	12.4%	3.7%
	OFTEN	2.0%	5.1%	0.0%	2.6%	2.2%
	VERY OFTEN	.8%	3.1%	2.8%	0.0%	1.0%
SEXUAL ORIENTATIONS: STUDENTS	SOMEWHAT OFTEN	12.5%	17.7%	19.4%	20.8%	13.5%
	OFTEN	7.7%	9.6%	11.1%	8.4%	8.0%
	VERY OFTEN	3.8%	12.1%	8.3%	5.2%	4.6%
SATISFACTION ACADEMIC EXPERIENCE	SOMEWHAT SATISFIED TO VERY SATISFIED	79.9%	77.2%	73.6%	74.8%	79.3%
SATISFACTION SOCIAL EXPERIENCE	SOMEWHAT SATISFIED TO VERY SATISFIED	67.8%	66.5%	73.6%	63.0%	67.5%
SATISFACTION: UC GPA	SOMEWHAT SATISFIED TO VERY SATISFIED	55.4%	57.2%	53.4%	49.5%	55.1%

Campus Climate by Sexual Orientation

